

Data Path : Z:\voasrv\HPCHEM1\MSVOA_X\Data\VX060121\
 Data File : VX022304.D
 Acq On : 01 Jun 2021 20:31
 Operator : JC/MD
 Sample : M2560-04
 Misc : 5.0mL/MSVOA_X/WATER
 ALS Vial : 20 Sample Multiplier: 1

Instrument :
 MSVOA_X
 ClientSampleId :
 S1-A-TOP

Quant Time: Jun 02 03:25:16 2021
 Quant Method : Z:\voasrv\HPCHEM1\MSVOA_X\Method\82X051921W.M
 Quant Title : SW846 8260
 QLast Update : Wed May 19 14:23:10 2021
 Response via : Initial Calibration

Compound	R.T.	QIon	Response	Conc	Units	Dev(Min)

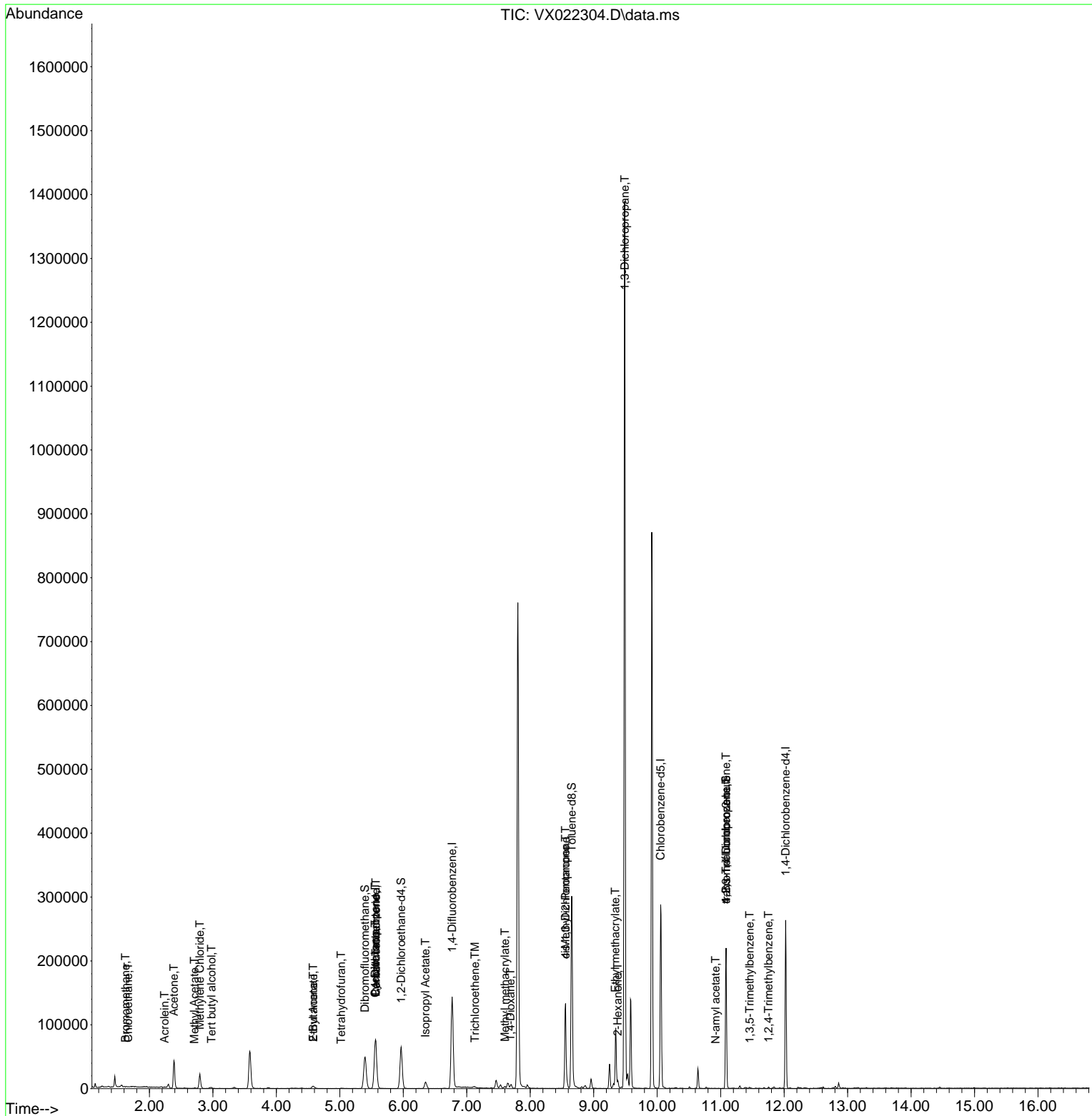
Internal Standards						
1) Pentafluorobenzene	5.568	168	66587	50.00	ug/l	0.00
34) 1,4-Difluorobenzene	6.769	114	143043	50.00	ug/l	0.00
63) Chlorobenzene-d5	10.055	117	123970	50.00	ug/l	0.00
72) 1,4-Dichlorobenzene-d4	12.024	152	48633	50.00	ug/l	0.00
System Monitoring Compounds						
33) 1,2-Dichloroethane-d4	5.964	65	57203	55.69	ug/l	0.00
Spiked Amount	50.000	Range	78 - 117	Recovery	=	111.38%
35) Dibromofluoromethane	5.397	113	43094	47.51	ug/l	0.00
Spiked Amount	50.000	Range	75 - 124	Recovery	=	95.02%
50) Toluene-d8	8.653	98	176337	50.46	ug/l	0.00
Spiked Amount	50.000	Range	92 - 112	Recovery	=	100.92%
62) 4-Bromofluorobenzene	11.085	95	59868	46.35	ug/l	0.00
Spiked Amount	50.000	Range	83 - 123	Recovery	=	92.70%
Target Compounds						
						Qvalue
5) Bromomethane	1.624	94	253	0.47	ug/l	88
6) Chloroethane	1.666	64	336	0.61	ug/l #	43
11) Tert butyl alcohol	2.977	59	2112	8.99	ug/l #	86
13) Acrolein	2.239	56	306	1.96	ug/l #	23
16) Acetone	2.386	43	45263	101.20	ug/l	98
18) Methyl Acetate	2.709	43	1290	1.08	ug/l	99
20) Methylene Chloride	2.794	84	9237	9.30	ug/l	91
25) 2-Butanone	4.580	43	6322	8.74	ug/l #	83
29) Tetrahydrofuran	5.019	42	491	1.14	ug/l #	34
31) Cyclohexane	5.556	56	1865	1.44	ug/l #	26
36) 1,1-Dichloropropene	5.556	75	6563	4.96	ug/l #	48
37) Ethyl Acetate	4.580	43	6322	3.90	ug/l #	64
38) Carbon Tetrachloride	5.568	117	8184	6.33	ug/l #	15
43) Isopropyl Acetate	6.348	43	13495	5.09	ug/l	94
44) Trichloroethene	7.129	130	248	0.25	ug/l	92
48) Methyl methacrylate	7.604	41	3754	3.07	ug/l #	10
49) 1,4-Dioxane	7.690	88	19	0.80	ug/l #	1
51) 4-Methyl-2-Pentanone	8.555	43	48518	30.54	ug/l #	41
54) cis-1,3-Dichloropropene	8.555	75	21573	12.33	ug/l #	63
56) Ethyl methacrylate	9.342	69	345	0.20	ug/l #	1
57) 1,3-Dichloropropane	9.488	76	11597	6.49	ug/l #	42
59) 2-Hexanone	9.378	43	6721	5.62	ug/l #	19
74) N-amyl acetate	10.921	43	403	0.21	ug/l #	38
76) 1,2,3-Trichloropropane	11.085	75	30867	25.73	ug/l #	38
80) 1,3,5-Trimethylbenzene	11.457	105	914	0.27	ug/l	97
81) trans-1,4-Dichloro-2-b...	11.085	75	30867	60.96	ug/l #	12
84) 1,2,4-Trimethylbenzene	11.756	105	1014	0.30	ug/l	91

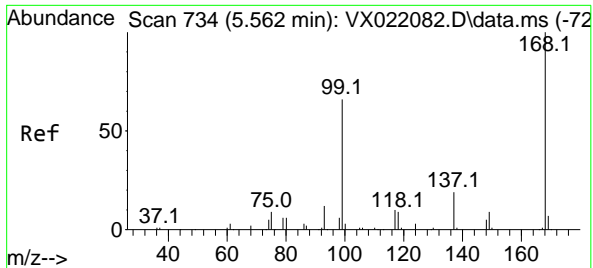
(#) = qualifier out of range (m) = manual integration (+) = signals summed

Data Path : Z:\voasrv\HPCHEM1\MSVOA_X\Data\VX060121\
 Data File : VX022304.D
 Acq On : 01 Jun 2021 20:31
 Operator : JC/MD
 Sample : M2560-04
 Misc : 5.0mL/MSVOA_X/WATER
 ALS Vial : 20 Sample Multiplier: 1

Instrument :
 MSVOA_X
 Client Sampled :
 S1-A-TOP

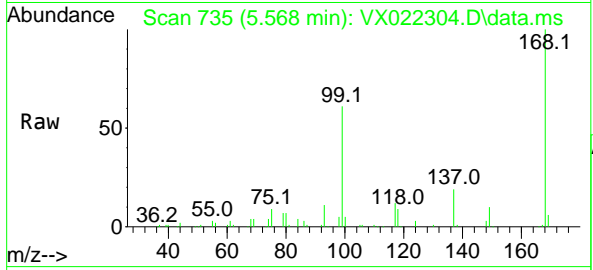
Quant Time: Jun 02 03:25:16 2021
 Quant Method : Z:\voasrv\HPCHEM1\MSVOA_X\Method\82X051921W.M
 Quant Title : SW846 8260
 QLast Update : Wed May 19 14:23:10 2021
 Response via : Initial Calibration



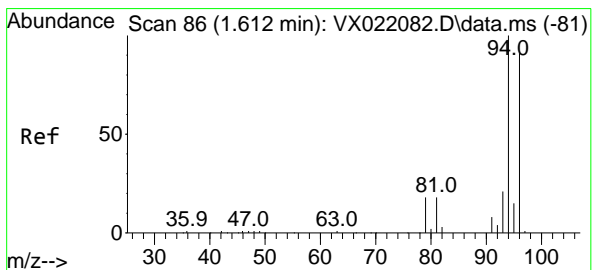
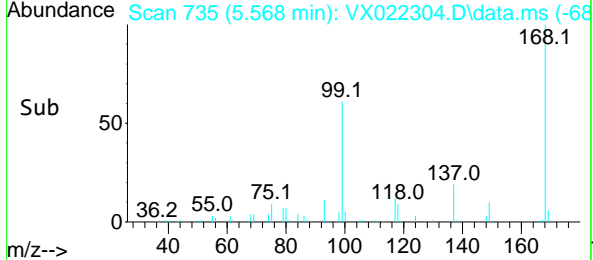
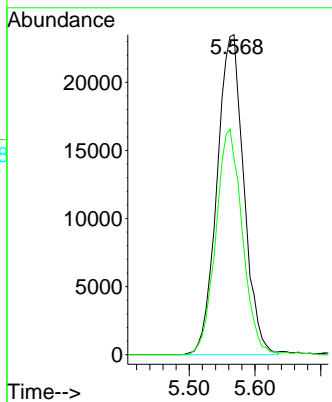


#1
 Pentafluorobenzene
 Concen: 50.00 ug/l
 RT: 5.568 min Scan# 735
 Delta R.T. 0.006 min
 Lab File: VX022304.D
 Acq: 01 Jun 2021 20:31

Instrument :
 MSVOA_X
 ClientSampled :
 S1-A-TOP

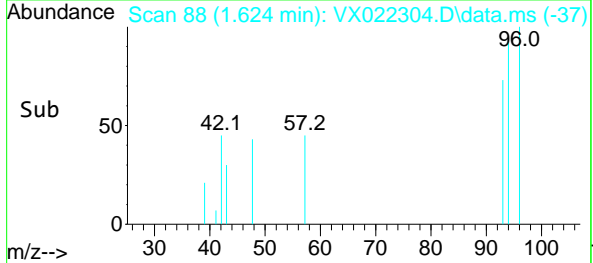
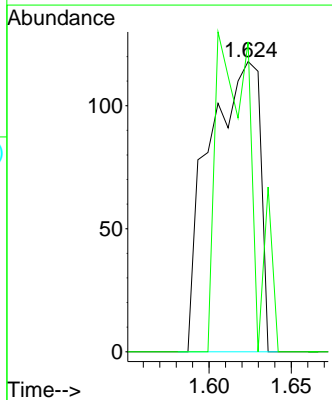
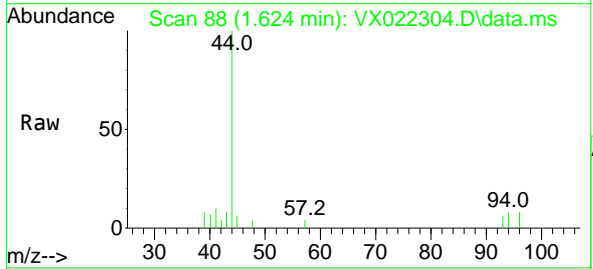


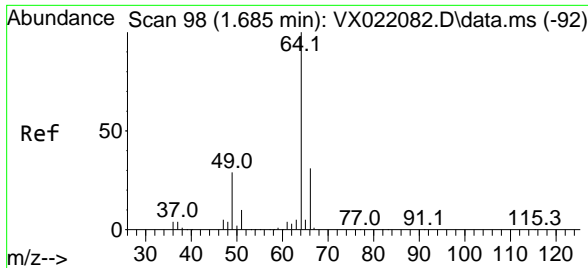
Tgt Ion: 168 Resp: 66587
 Ion Ratio Lower Upper
 168 100
 99 61.2 45.8 68.6



#5
 Bromomethane
 Concen: 0.47 ug/l
 RT: 1.624 min Scan# 88
 Delta R.T. 0.012 min
 Lab File: VX022304.D
 Acq: 01 Jun 2021 20:31

Tgt Ion: 94 Resp: 253
 Ion Ratio Lower Upper
 94 100
 96 106.8 76.4 114.6

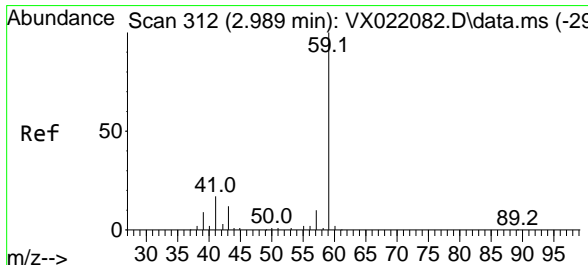
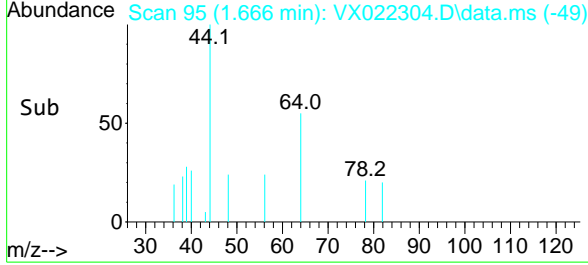
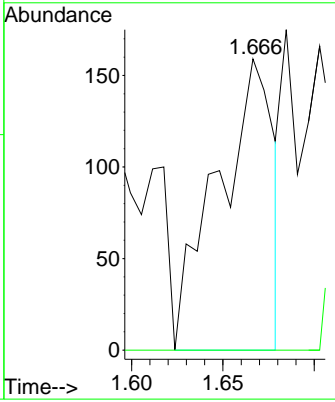
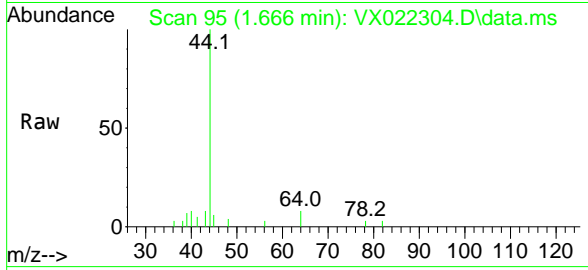




#6
 Chloroethane
 Concen: 0.61 ug/l
 RT: 1.666 min Scan# 95
 Delta R.T. -0.019 min
 Lab File: VX022304.D
 Acq: 01 Jun 2021 20:31

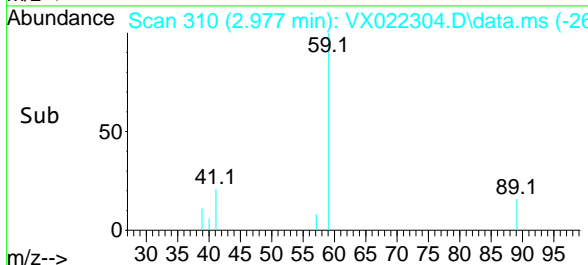
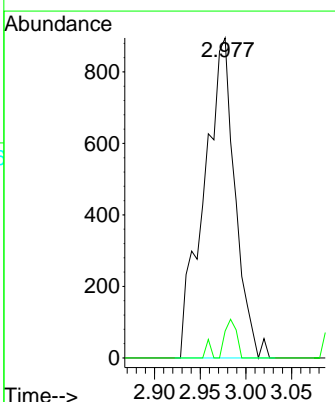
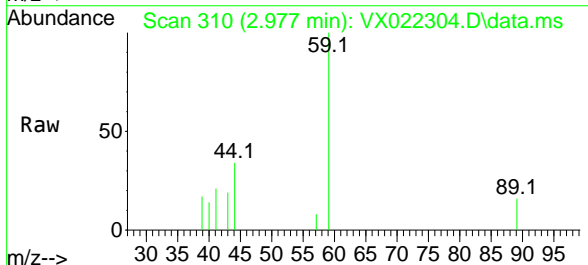
Instrument :
 MSVOA_X
 ClientSampled :
 S1-A-TOP

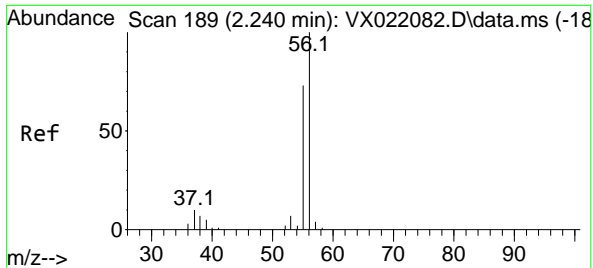
Tgt Ion: 64 Resp: 336
 Ion Ratio Lower Upper
 64 100
 66 0.0 25.4 38.0#



#11
 Tert butyl alcohol
 Concen: 8.99 ug/l
 RT: 2.977 min Scan# 310
 Delta R.T. -0.012 min
 Lab File: VX022304.D
 Acq: 01 Jun 2021 20:31

Tgt Ion: 59 Resp: 2112
 Ion Ratio Lower Upper
 59 100
 57 4.5 7.8 11.8#

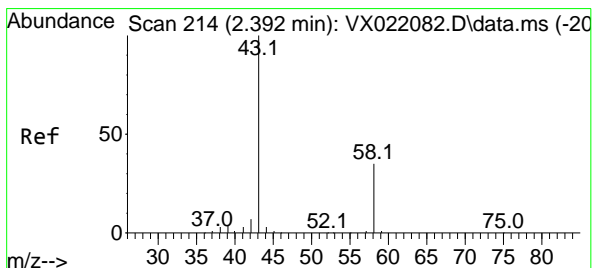
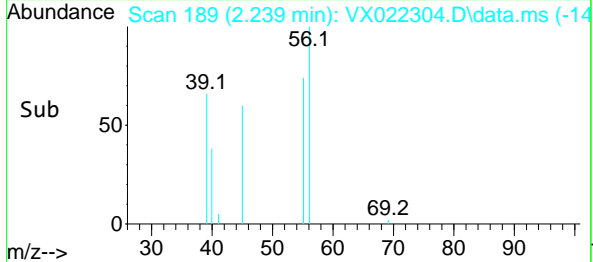
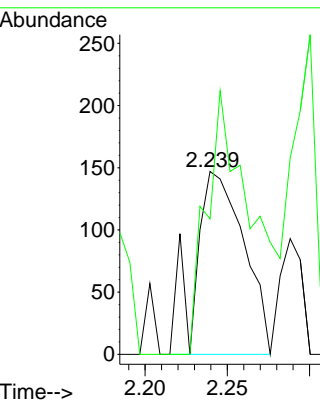
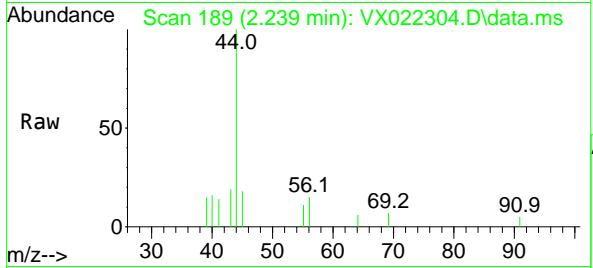




#13
 Acrolein
 Concen: 1.96 ug/l
 RT: 2.239 min Scan# 189
 Delta R.T. -0.001 min
 Lab File: VX022304.D
 Acq: 01 Jun 2021 20:31

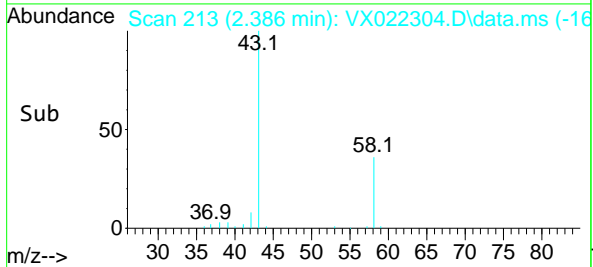
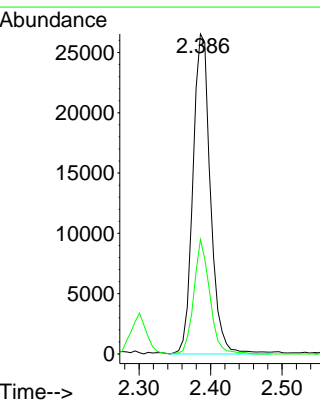
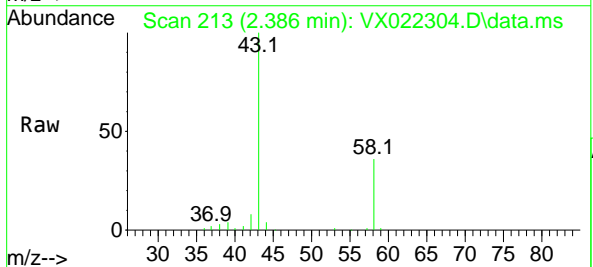
Instrument :
 MSVOA_X
 ClientSampled :
 S1-A-TOP

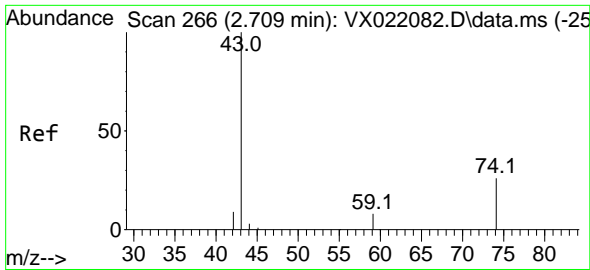
Tgt Ion: 56 Resp: 306
 Ion Ratio Lower Upper
 56 100
 55 133.7 56.4 84.6#



#16
 Acetone
 Concen: 101.20 ug/l
 RT: 2.386 min Scan# 213
 Delta R.T. -0.006 min
 Lab File: VX022304.D
 Acq: 01 Jun 2021 20:31

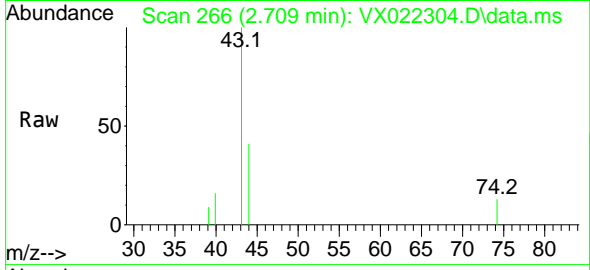
Tgt Ion: 43 Resp: 45263
 Ion Ratio Lower Upper
 43 100
 58 35.8 27.8 41.8



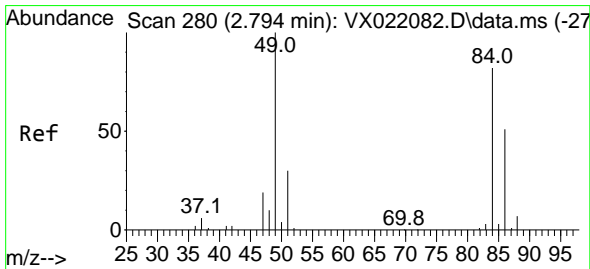
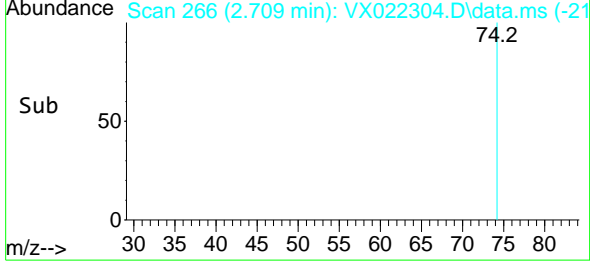
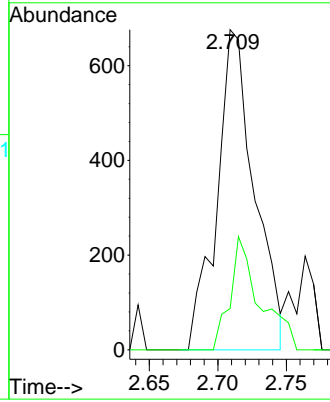


#18
 Methyl Acetate
 Concen: 1.08 ug/l
 RT: 2.709 min Scan# 266
 Delta R.T. -0.000 min
 Lab File: VX022304.D
 Acq: 01 Jun 2021 20:31

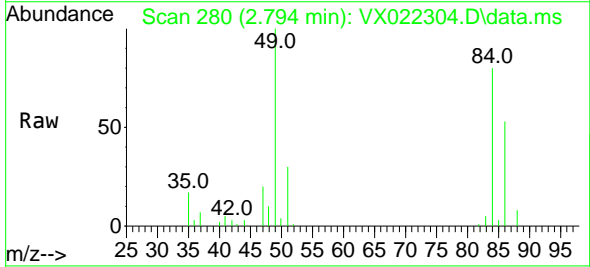
Instrument :
 MSVOA_X
 ClientSampled :
 S1-A-TOP



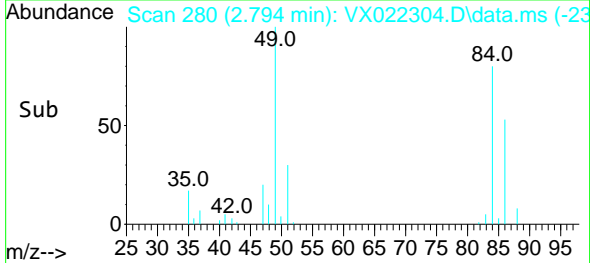
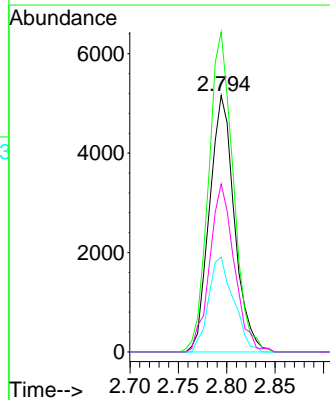
Tgt Ion: 43 Resp: 1290
 Ion Ratio Lower Upper
 43 100
 74 28.0 21.9 32.9

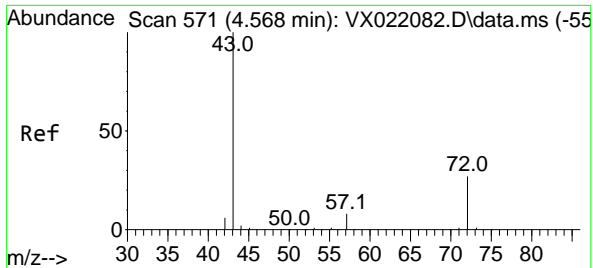


#20
 Methylene Chloride
 Concen: 9.30 ug/l
 RT: 2.794 min Scan# 280
 Delta R.T. 0.000 min
 Lab File: VX022304.D
 Acq: 01 Jun 2021 20:31



Tgt Ion: 84 Resp: 9237
 Ion Ratio Lower Upper
 84 100
 49 124.8 88.6 132.8
 51 37.1 27.0 40.6
 86 65.5 50.3 75.5

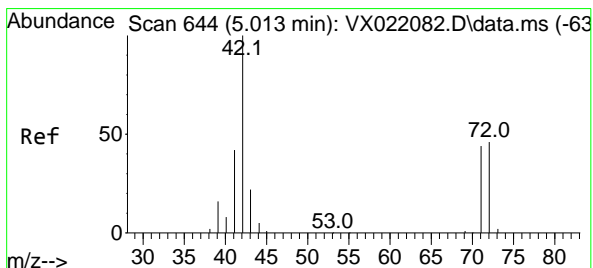
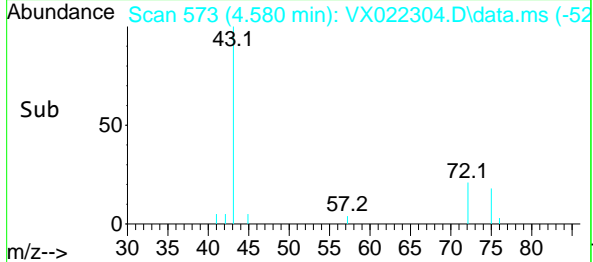
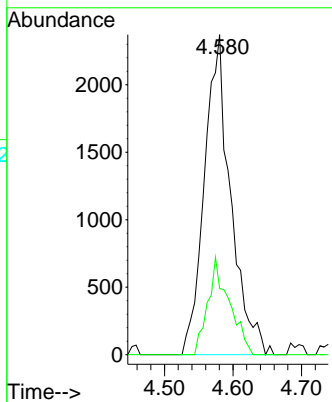
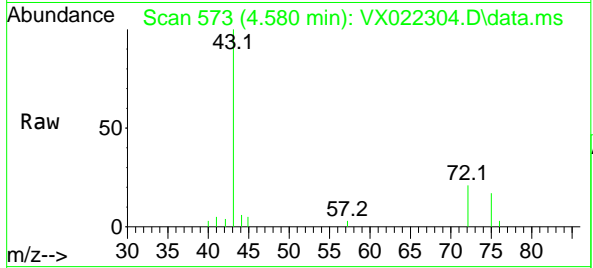




#25
 2-Butanone
 Concen: 8.74 ug/l
 RT: 4.580 min Scan# 573
 Delta R.T. 0.013 min
 Lab File: VX022304.D
 Acq: 01 Jun 2021 20:31

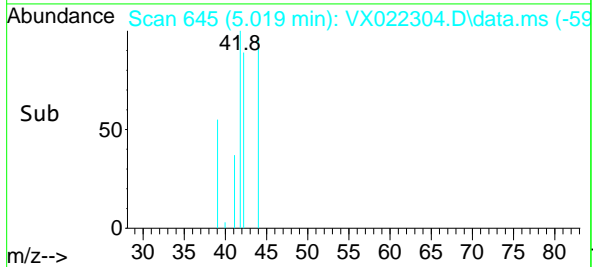
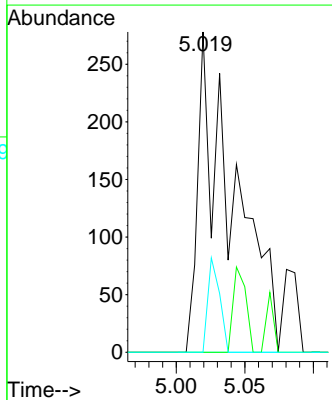
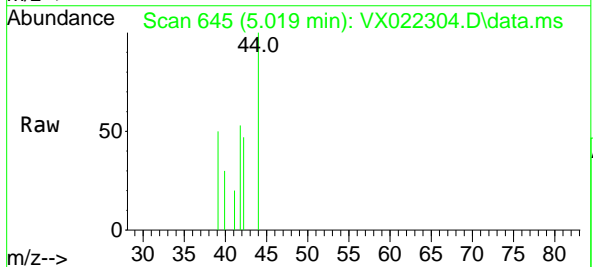
Instrument :
 MSVOA_X
 ClientSampled :
 S1-A-TOP

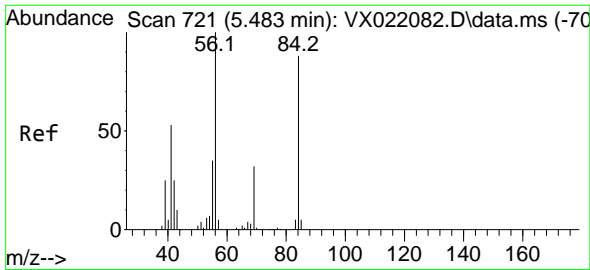
Tgt Ion: 43 Resp: 6322
 Ion Ratio Lower Upper
 43 100
 72 20.7 23.7 35.5#



#29
 Tetrahydrofuran
 Concen: 1.14 ug/l
 RT: 5.019 min Scan# 645
 Delta R.T. 0.006 min
 Lab File: VX022304.D
 Acq: 01 Jun 2021 20:31

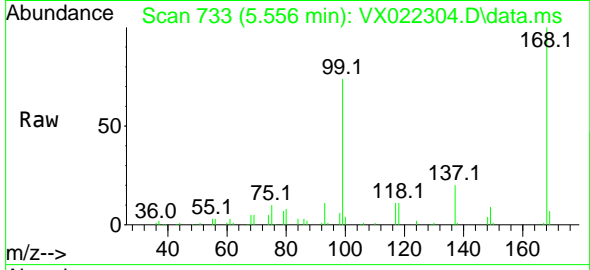
Tgt Ion: 42 Resp: 491
 Ion Ratio Lower Upper
 42 100
 72 0.0 41.7 62.5#
 71 10.0 38.4 57.6#





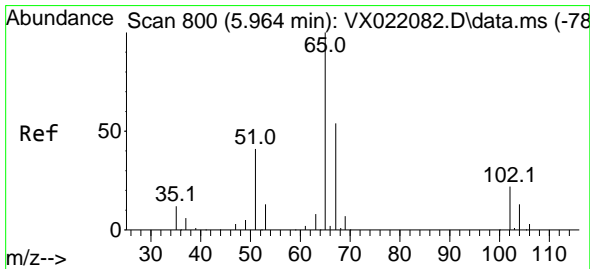
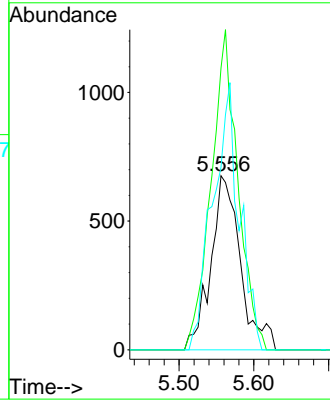
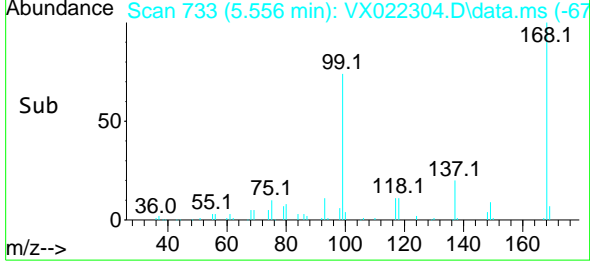
#31
 Cyclohexane
 Concen: 1.44 ug/l
 RT: 5.556 min Scan# 733
 Delta R.T. 0.073 min
 Lab File: VX022304.D
 Acq: 01 Jun 2021 20:31

Instrument :
 MSVOA_X
 ClientSampled :
 S1-A-TOP

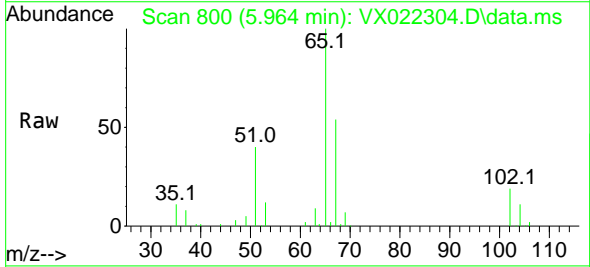


Tgt Ion: 56 Resp: 1865

Ion	Ratio	Lower	Upper
56	100		
69	162.0	25.3	37.9#
84	104.9	71.4	107.0

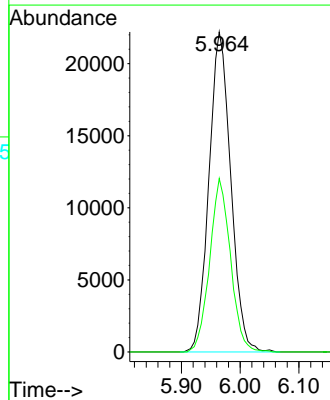
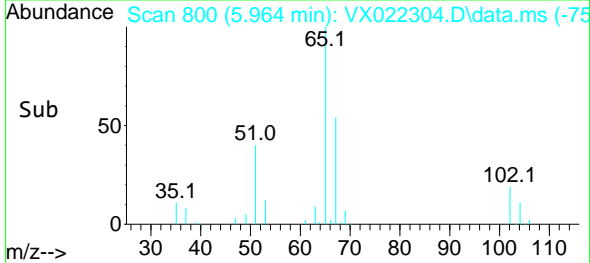


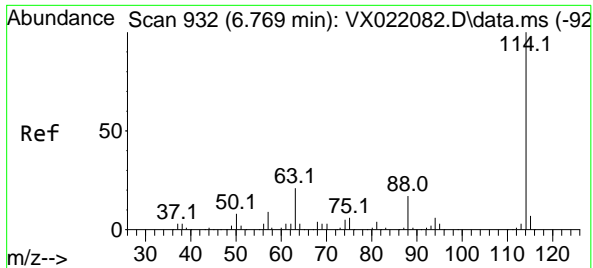
#33
 1,2-Dichloroethane-d4
 Concen: 55.69 ug/l
 RT: 5.964 min Scan# 800
 Delta R.T. 0.000 min
 Lab File: VX022304.D
 Acq: 01 Jun 2021 20:31



Tgt Ion: 65 Resp: 57203

Ion	Ratio	Lower	Upper
65	100		
67	51.8	0.0	105.4

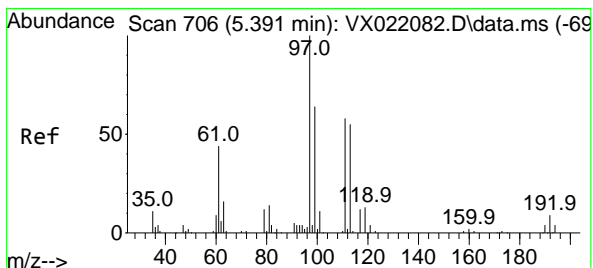
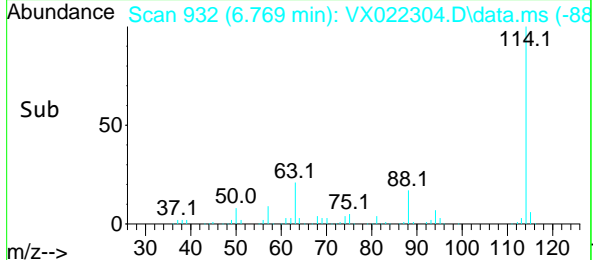
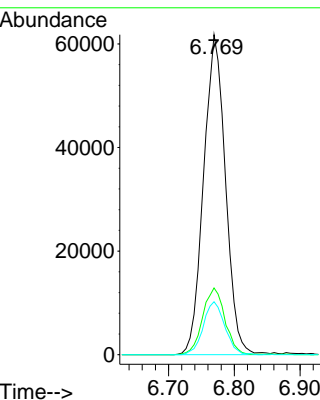
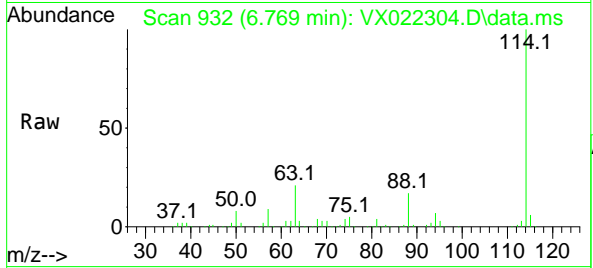




#34
 1,4-Difluorobenzene
 Concen: 50.00 ug/l
 RT: 6.769 min Scan# 932
 Delta R.T. 0.000 min
 Lab File: VX022304.D
 Acq: 01 Jun 2021 20:31

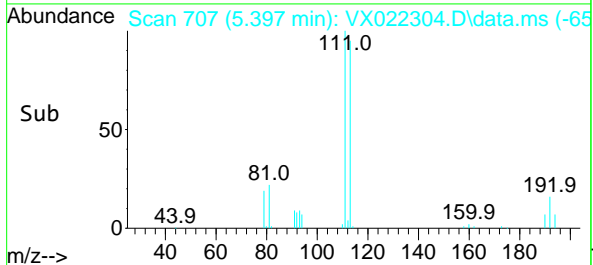
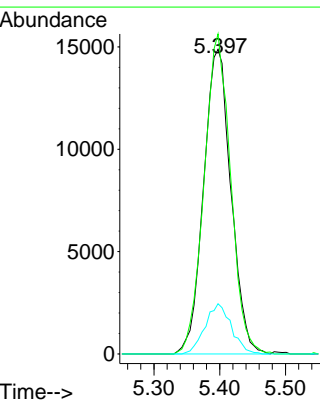
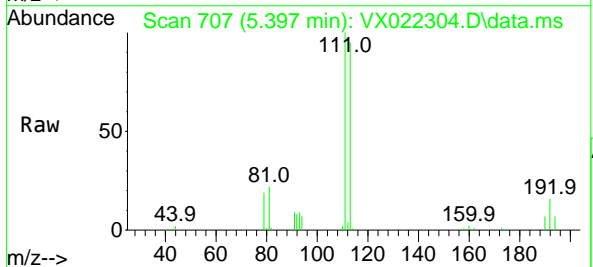
Instrument :
 MSVOA_X
 ClientSampled :
 S1-A-TOP

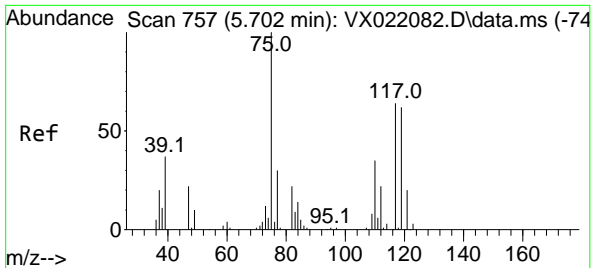
Tgt Ion	Resp	Lower	Upper
114	143043		
63	20.8	0.0	40.8
88	16.5	0.0	32.8



#35
 Dibromofluoromethane
 Concen: 47.51 ug/l
 RT: 5.397 min Scan# 707
 Delta R.T. 0.006 min
 Lab File: VX022304.D
 Acq: 01 Jun 2021 20:31

Tgt Ion	Resp	Lower	Upper
113	43094		
111	101.8	81.9	122.9
192	15.8	16.7	25.1#

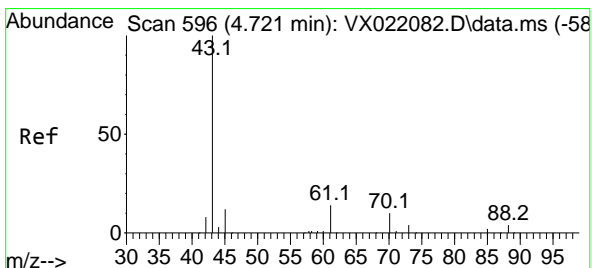
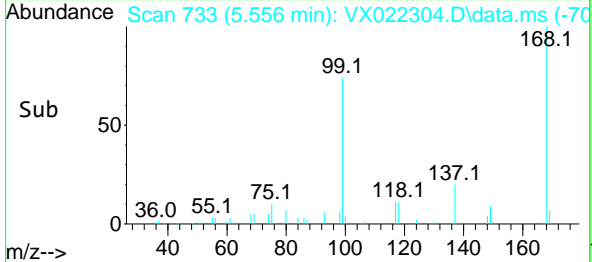
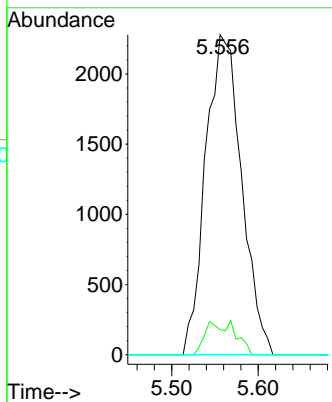
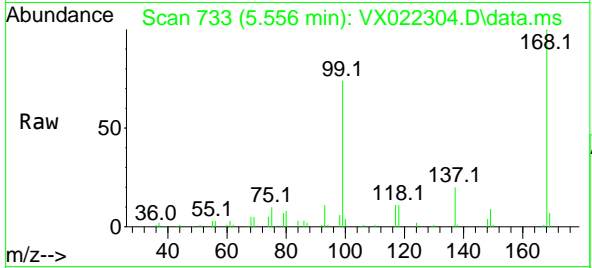




#36
 1,1-Dichloropropene
 Concen: 4.96 ug/l
 RT: 5.556 min Scan# 733
 Delta R.T. -0.146 min
 Lab File: VX022304.D
 Acq: 01 Jun 2021 20:31

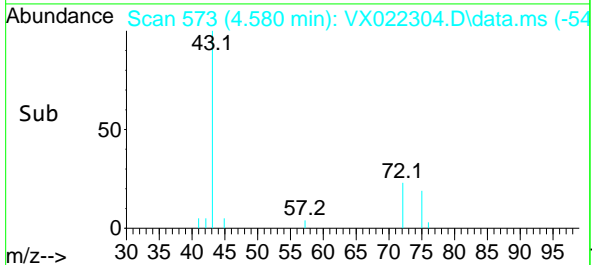
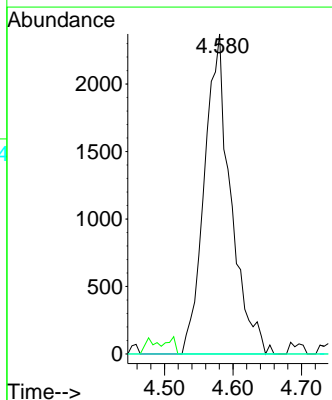
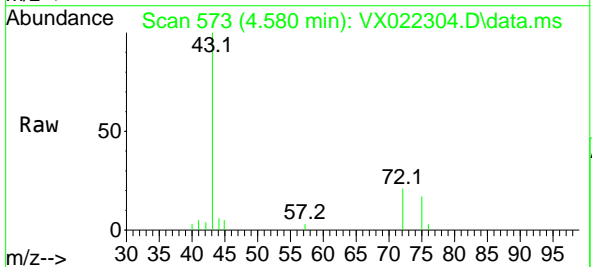
Instrument :
 MSVOA_X
 ClientSampled :
 S1-A-TOP

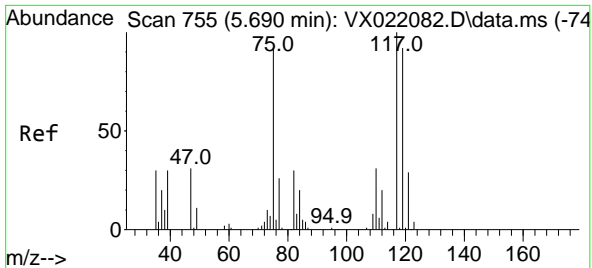
Tgt Ion	Resp	Lower	Upper
75	6563		
75	100		
110	8.6	18.1	54.4#
77	0.0	25.3	37.9#



#37
 Ethyl Acetate
 Concen: 3.90 ug/l
 RT: 4.580 min Scan# 573
 Delta R.T. -0.141 min
 Lab File: VX022304.D
 Acq: 01 Jun 2021 20:31

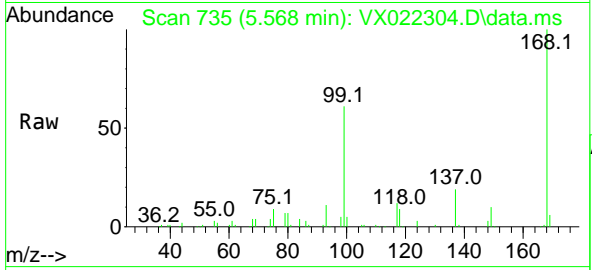
Tgt Ion	Resp	Lower	Upper
43	6322		
43	100		
61	0.0	12.8	19.2#
70	0.0	10.5	15.7#





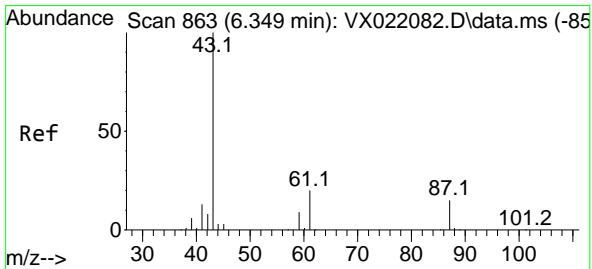
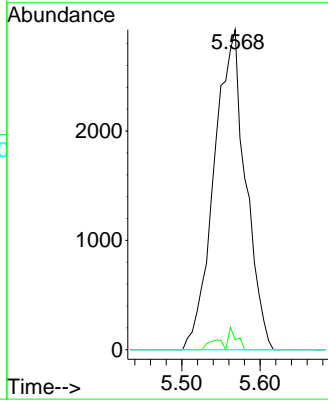
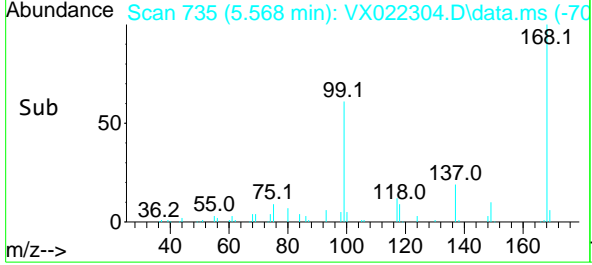
#38
 Carbon Tetrachloride
 Concen: 6.33 ug/l
 RT: 5.568 min Scan# 735
 Delta R.T. -0.122 min
 Lab File: VX022304.D
 Acq: 01 Jun 2021 20:31

Instrument :
 MSVOA_X
ClientSampled :
 S1-A-TOP

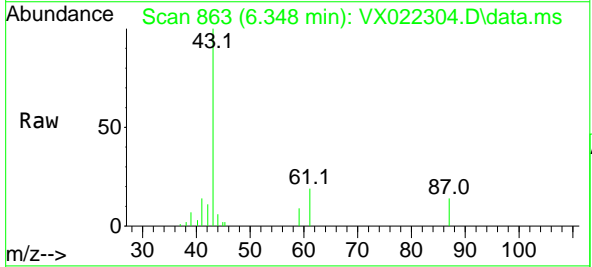


Tgt Ion: 117 Resp: 8184

Ion	Ratio	Lower	Upper
117	100		
119	3.1	76.2	114.2#
121	0.0	24.8	37.2#

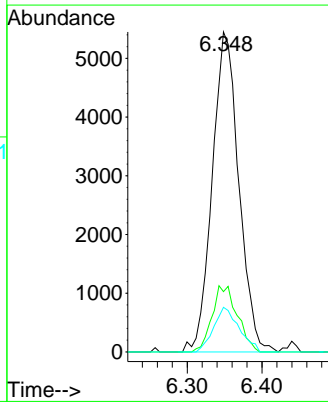
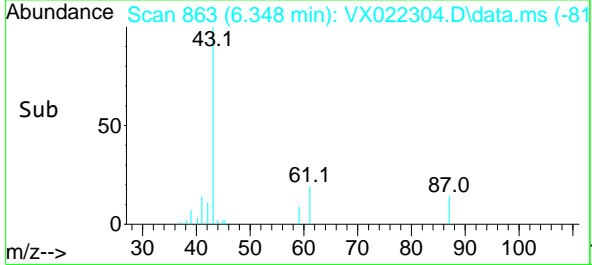


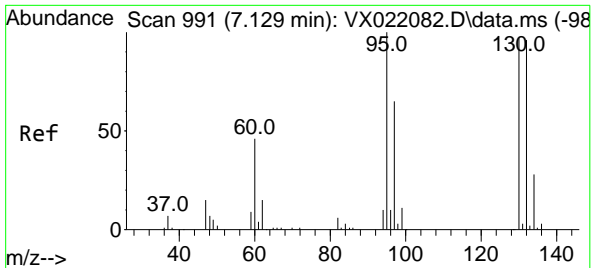
#43
 Isopropyl Acetate
 Concen: 5.09 ug/l
 RT: 6.348 min Scan# 863
 Delta R.T. -0.001 min
 Lab File: VX022304.D
 Acq: 01 Jun 2021 20:31



Tgt Ion: 43 Resp: 13495

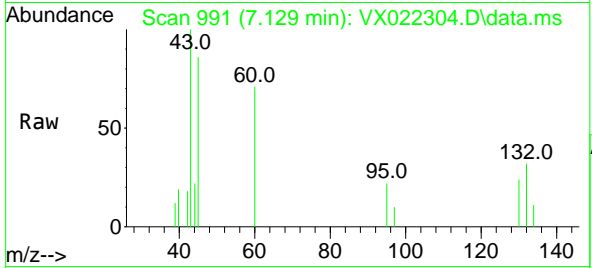
Ion	Ratio	Lower	Upper
43	100		
61	19.7	18.2	27.4
87	13.3	12.5	18.7



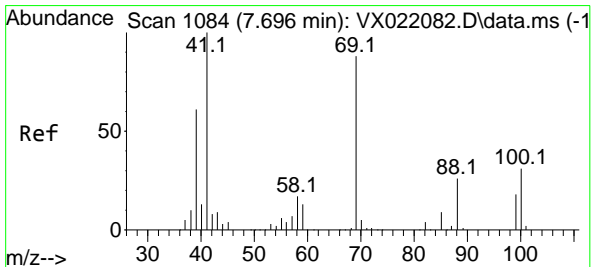
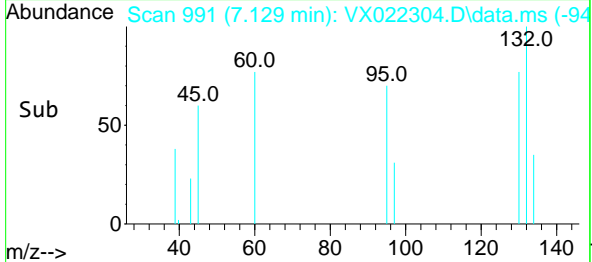
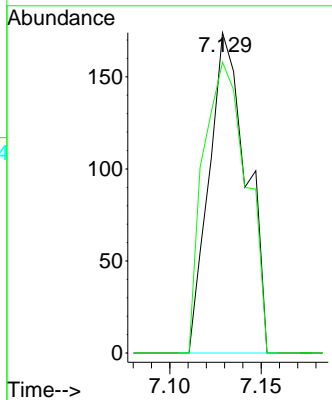


#44
 Trichloroethene
 Concen: 0.25 ug/l
 RT: 7.129 min Scan# 991
 Delta R.T. -0.000 min
 Lab File: VX022304.D
 Acq: 01 Jun 2021 20:31

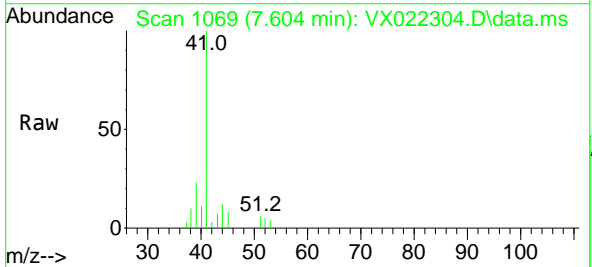
Instrument :
 MSVOA_X
 ClientSampled :
 S1-A-TOP



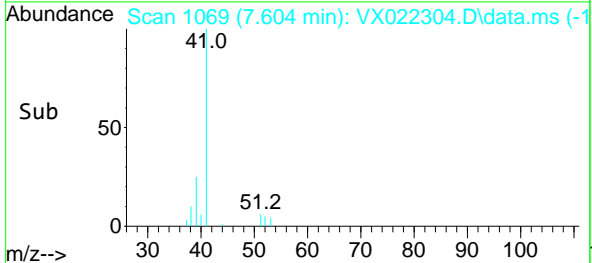
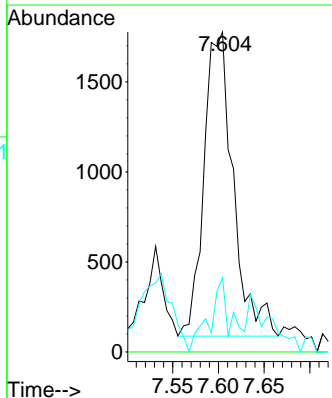
Tgt Ion:130 Resp: 248
 Ion Ratio Lower Upper
 130 100
 95 90.8 0.0 198.0

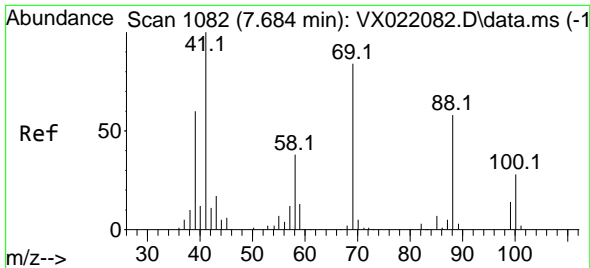


#48
 Methyl methacrylate
 Concen: 3.07 ug/l
 RT: 7.604 min Scan# 1069
 Delta R.T. -0.092 min
 Lab File: VX022304.D
 Acq: 01 Jun 2021 20:31



Tgt Ion: 41 Resp: 3754
 Ion Ratio Lower Upper
 41 100
 69 0.0 76.0 114.0#
 39 0.0 44.6 67.0#

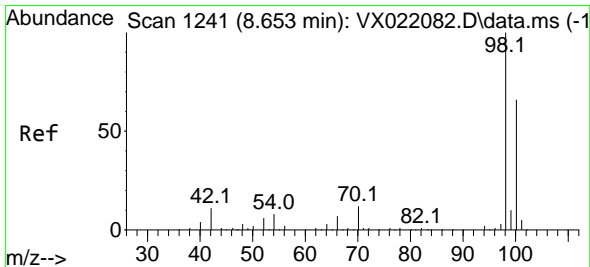
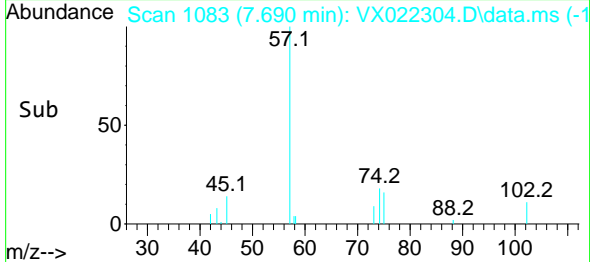
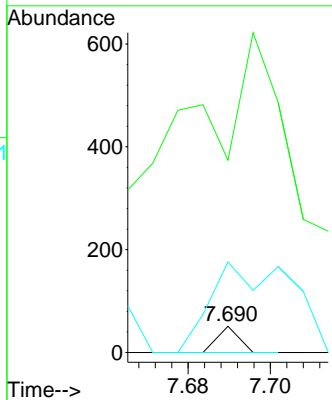
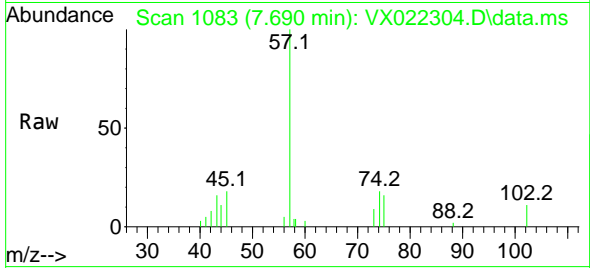




#49
 1,4-Dioxane
 Concen: 0.80 ug/l
 RT: 7.690 min Scan# 1083
 Delta R.T. 0.006 min
 Lab File: VX022304.D
 Acq: 01 Jun 2021 20:31

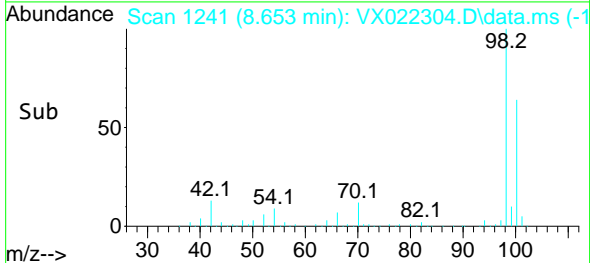
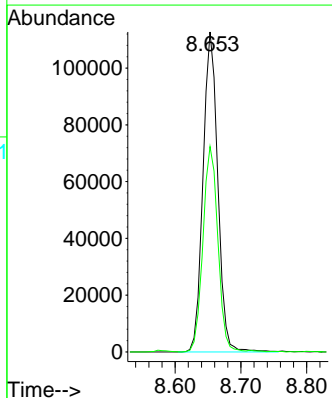
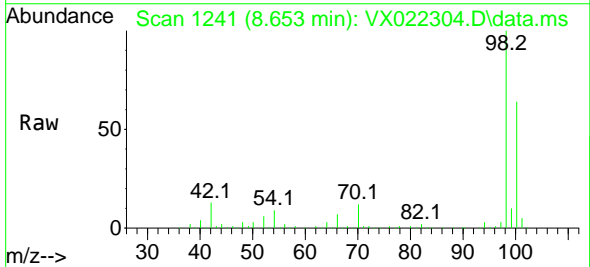
Instrument :
 MSVOA_X
 ClientSampled :
 S1-A-TOP

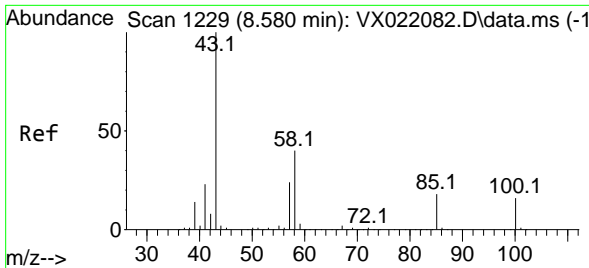
Tgt Ion: 88 Resp: 19
 Ion Ratio Lower Upper
 88 100
 43 0.0 23.2 34.8#
 58 1263.2 55.0 82.4#



#50
 Toluene-d8
 Concen: 50.46 ug/l
 RT: 8.653 min Scan# 1241
 Delta R.T. -0.000 min
 Lab File: VX022304.D
 Acq: 01 Jun 2021 20:31

Tgt Ion: 98 Resp: 176337
 Ion Ratio Lower Upper
 98 100
 100 64.8 51.9 77.9

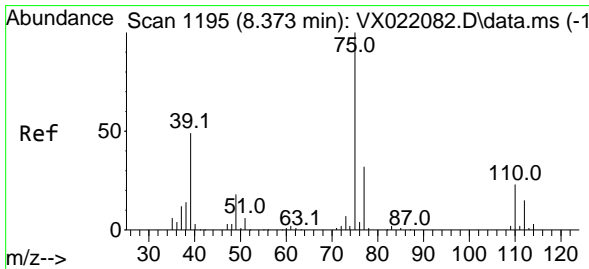
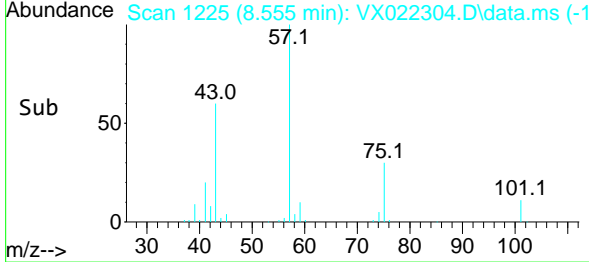
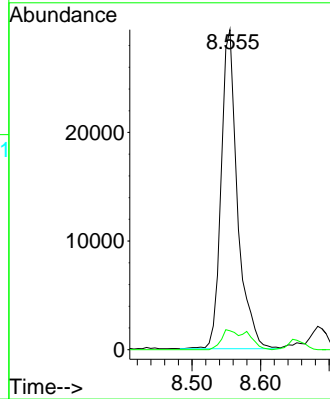
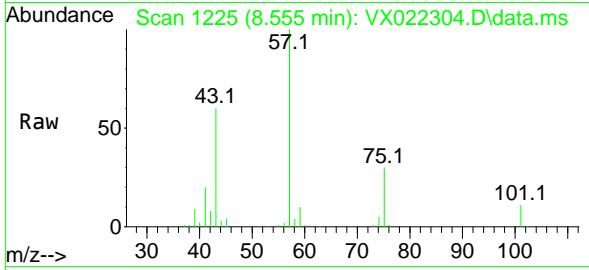




#51
 4-Methyl-2-Pentanone
 Concen: 30.54 ug/l
 RT: 8.555 min Scan# 1225
 Delta R.T. -0.025 min
 Lab File: VX022304.D
 Acq: 01 Jun 2021 20:31

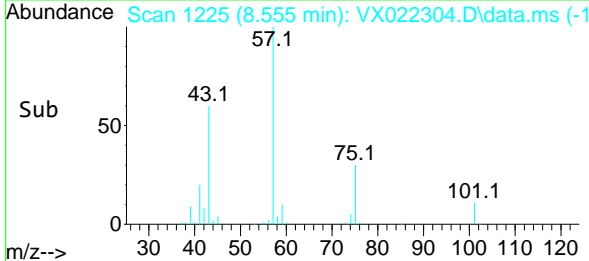
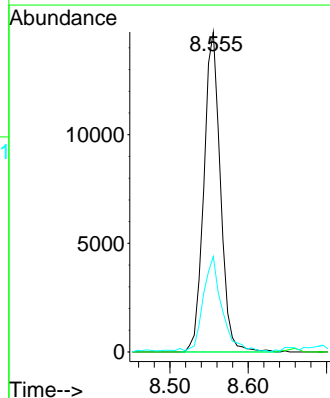
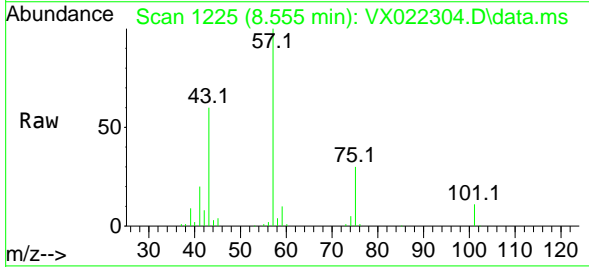
Instrument :
 MSVOA_X
 ClientSampled :
 S1-A-TOP

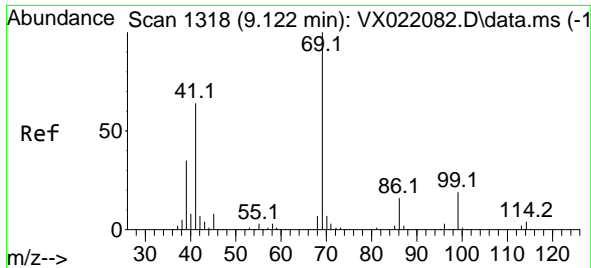
Tgt Ion: 43 Resp: 48518
 Ion Ratio Lower Upper
 43 100
 58 6.1 35.4 53.0#



#54
 cis-1,3-Dichloropropene
 Concen: 12.33 ug/l
 RT: 8.555 min Scan# 1225
 Delta R.T. 0.182 min
 Lab File: VX022304.D
 Acq: 01 Jun 2021 20:31

Tgt Ion: 75 Resp: 21573
 Ion Ratio Lower Upper
 75 100
 77 0.0 25.7 38.5#
 39 29.5 35.1 52.7#



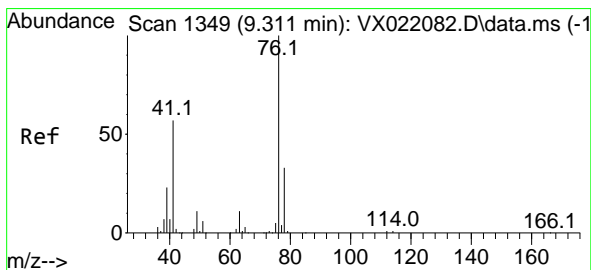
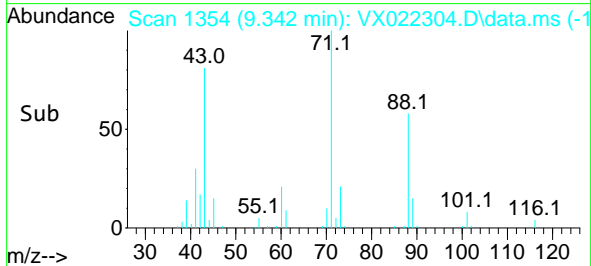
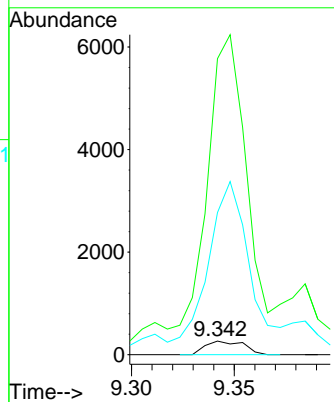
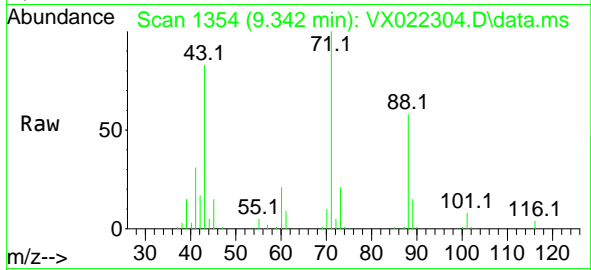


#56
 Ethyl methacrylate
 Concen: 0.20 ug/l
 RT: 9.342 min Scan# 1354
 Delta R.T. 0.220 min
 Lab File: VX022304.D
 Acq: 01 Jun 2021 20:31

Instrument :
 MSVOA_X
 ClientSampled :
 S1-A-TOP

Tgt Ion: 69 Resp: 345

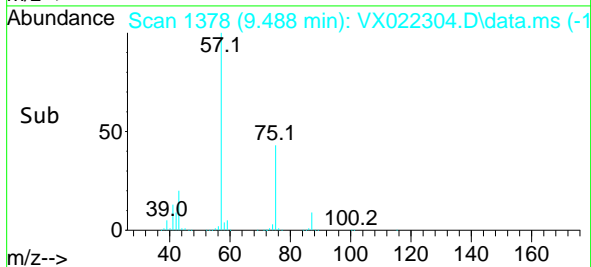
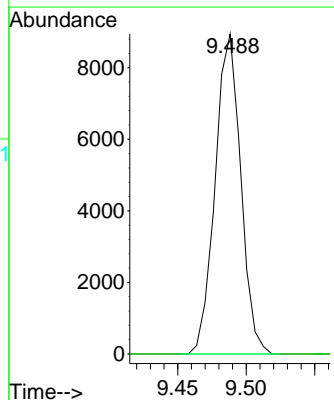
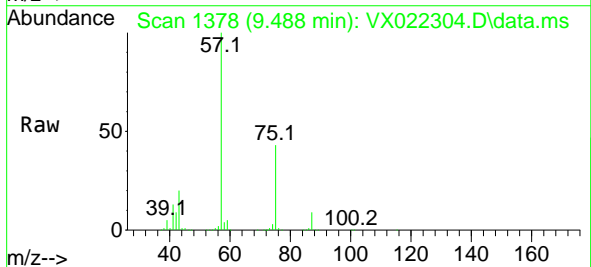
Ion	Ratio	Lower	Upper
69	100		
41	2671.0	46.8	70.2#
39	1407.8	24.7	37.1#

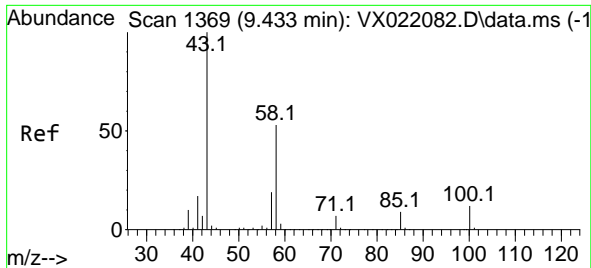


#57
 1,3-Dichloropropane
 Concen: 6.49 ug/l
 RT: 9.488 min Scan# 1378
 Delta R.T. 0.177 min
 Lab File: VX022304.D
 Acq: 01 Jun 2021 20:31

Tgt Ion: 76 Resp: 11597

Ion	Ratio	Lower	Upper
76	100		
78	0.0	26.2	39.2#

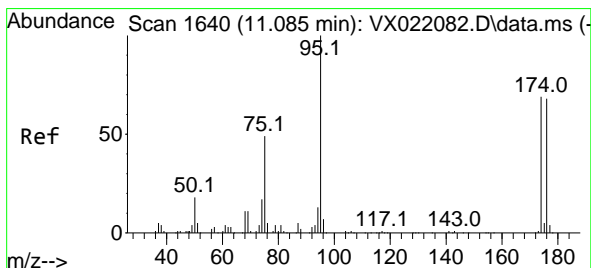
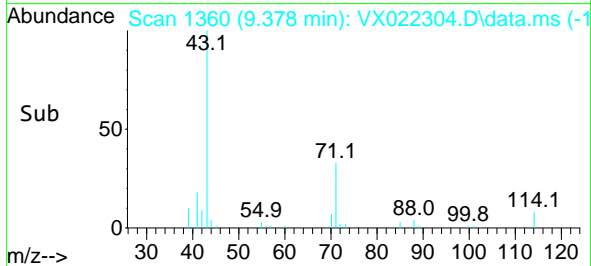
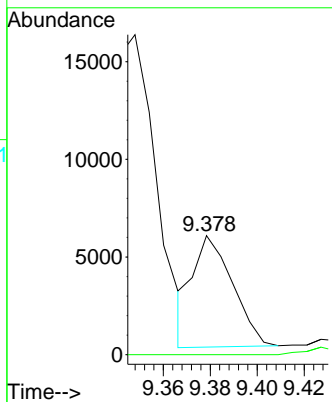
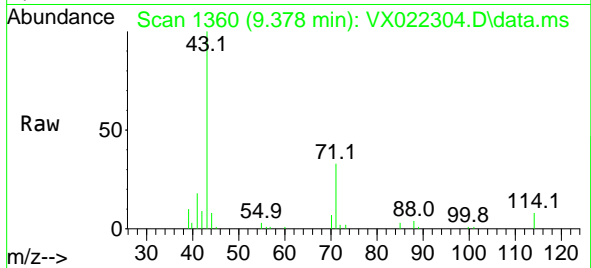




#59
 2-Hexanone
 Concen: 5.62 ug/l
 RT: 9.378 min Scan# 1360
 Delta R.T. -0.055 min
 Lab File: VX022304.D
 Acq: 01 Jun 2021 20:31

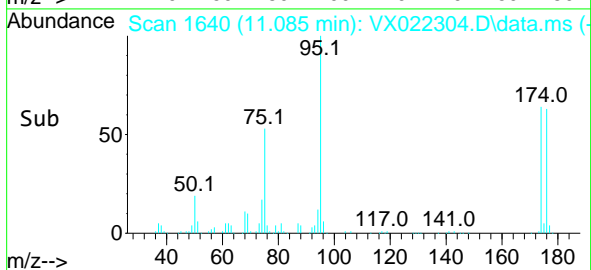
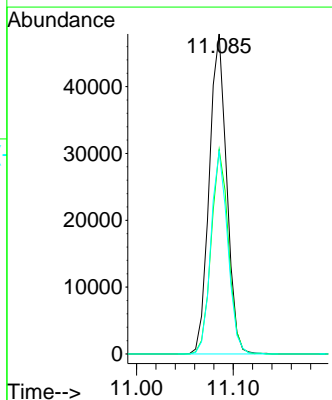
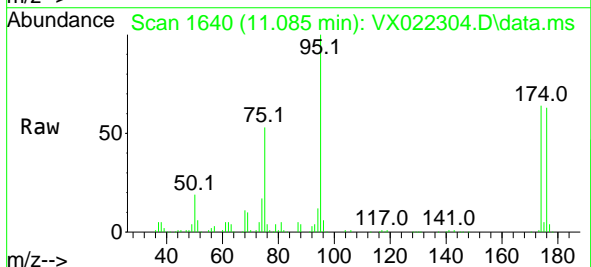
Instrument :
 MSVOA_X
 ClientSampled :
 S1-A-TOP

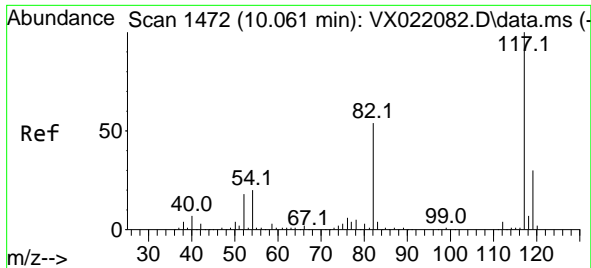
Tgt Ion: 43 Resp: 6721
 Ion Ratio Lower Upper
 43 100
 58 0.0 30.9 92.8#



#62
 4-Bromofluorobenzene
 Concen: 46.35 ug/l
 RT: 11.085 min Scan# 1640
 Delta R.T. 0.000 min
 Lab File: VX022304.D
 Acq: 01 Jun 2021 20:31

Tgt Ion: 95 Resp: 59868
 Ion Ratio Lower Upper
 95 100
 174 63.0 0.0 154.6
 176 61.3 0.0 155.8

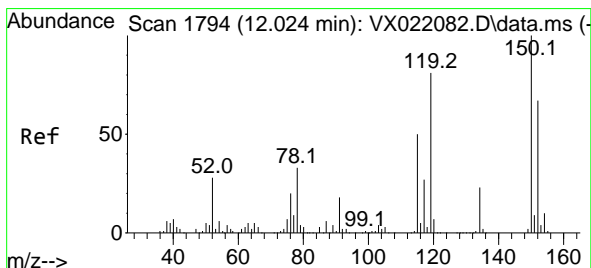
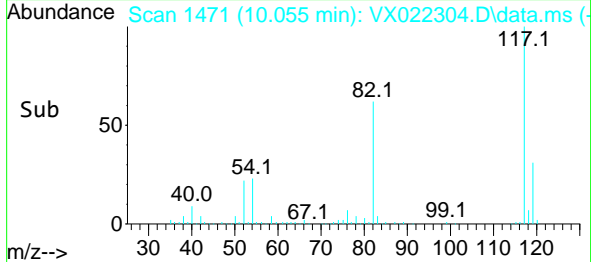
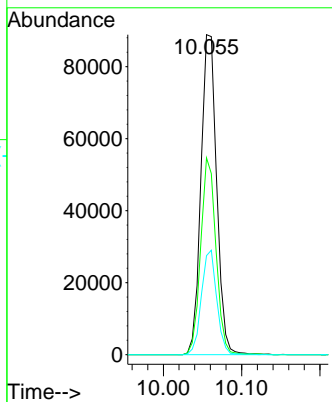
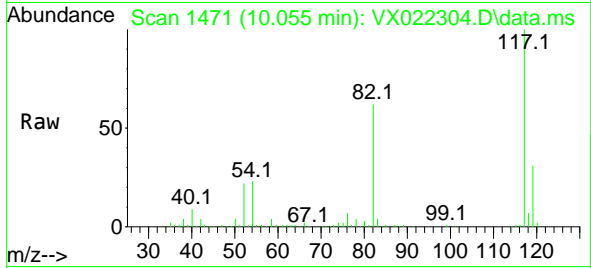




#63
 Chlorobenzene-d5
 Concen: 50.00 ug/l
 RT: 10.055 min Scan# 1471
 Delta R.T. -0.006 min
 Lab File: VX022304.D
 Acq: 01 Jun 2021 20:31

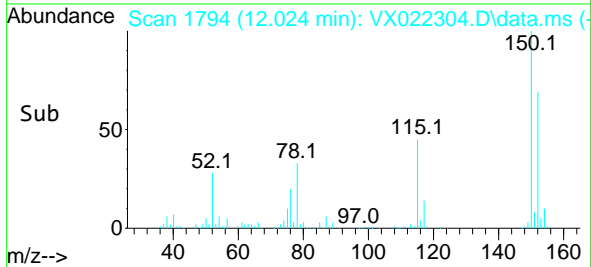
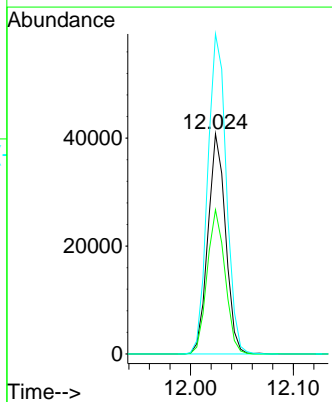
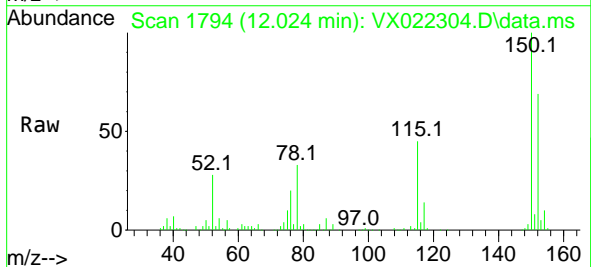
Instrument :
 MSVOA_X
ClientSampled :
 S1-A-TOP

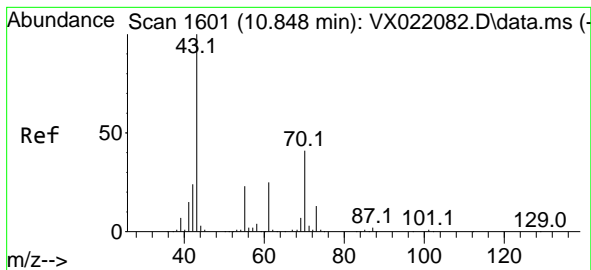
Tgt Ion	Resp	Lower	Upper
117	100		
82	61.5	47.4	71.2
119	31.0	26.6	39.8



#72
 1,4-Dichlorobenzene-d4
 Concen: 50.00 ug/l
 RT: 12.024 min Scan# 1794
 Delta R.T. 0.000 min
 Lab File: VX022304.D
 Acq: 01 Jun 2021 20:31

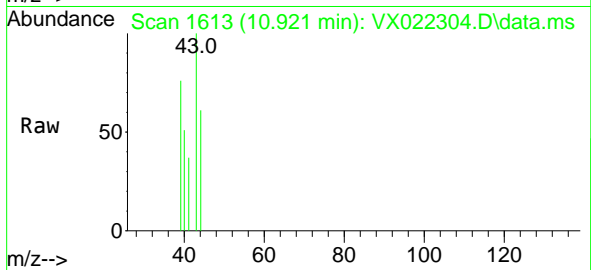
Tgt Ion	Resp	Lower	Upper
152	100		
115	66.8	41.1	123.3
150	153.4	0.0	349.0





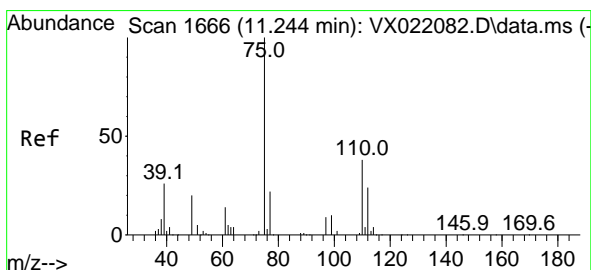
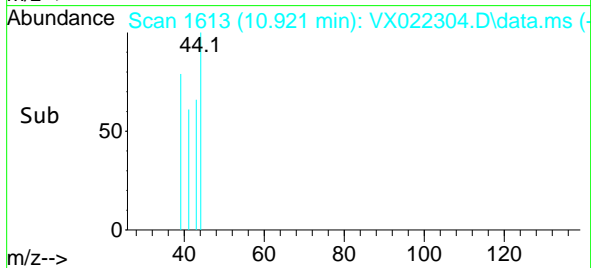
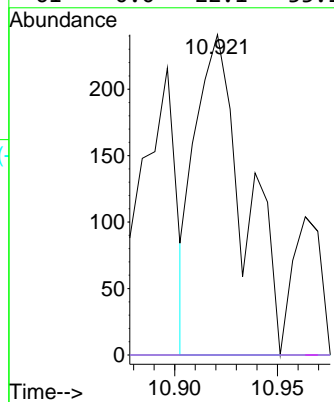
#74
 N-amy1 acetate
 Concen: 0.21 ug/l
 RT: 10.921 min Scan# 1613
 Delta R.T. 0.073 min
 Lab File: VX022304.D
 Acq: 01 Jun 2021 20:31

Instrument :
 MSVOA_X
 ClientSampled :
 S1-A-TOP

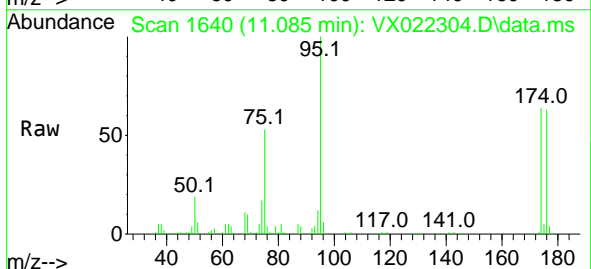


Tgt Ion: 43 Resp: 403

Ion	Ratio	Lower	Upper
43	100		
70	0.0	39.0	58.6#
55	0.0	21.5	32.3#
61	0.0	22.1	33.1#

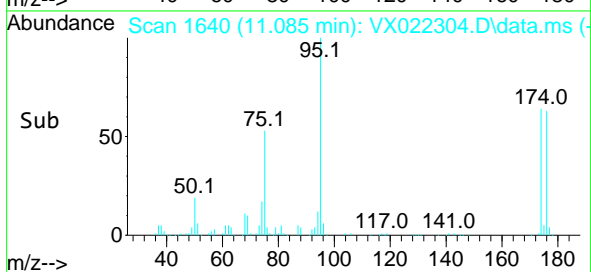
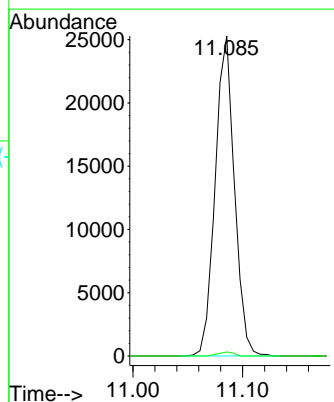


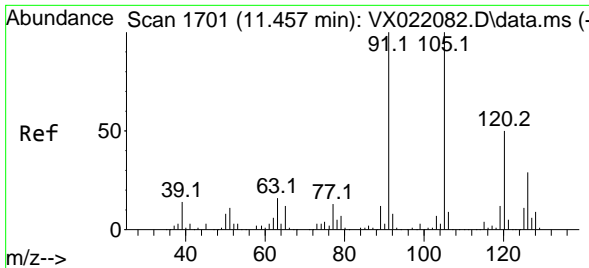
#76
 1,2,3-Trichloropropane
 Concen: 25.73 ug/l
 RT: 11.085 min Scan# 1640
 Delta R.T. -0.159 min
 Lab File: VX022304.D
 Acq: 01 Jun 2021 20:31



Tgt Ion: 75 Resp: 30867

Ion	Ratio	Lower	Upper
75	100		
77	1.0	19.1	57.5#

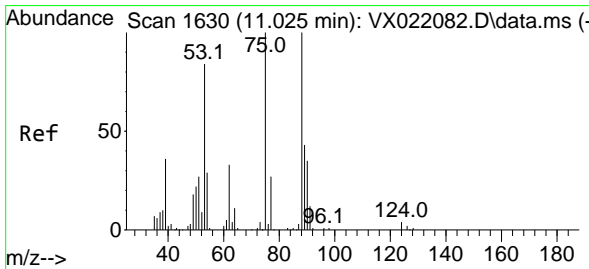
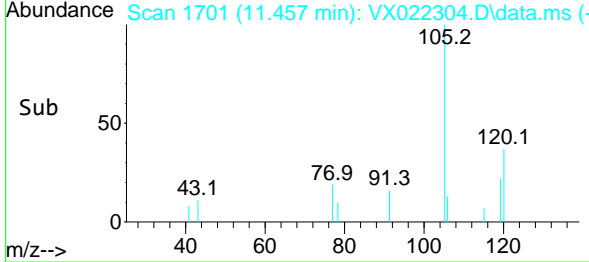
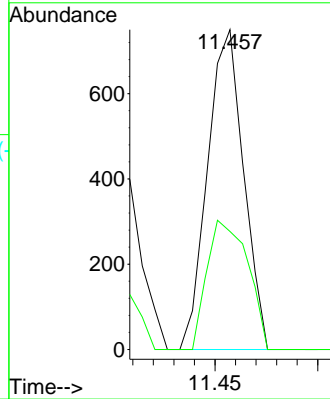
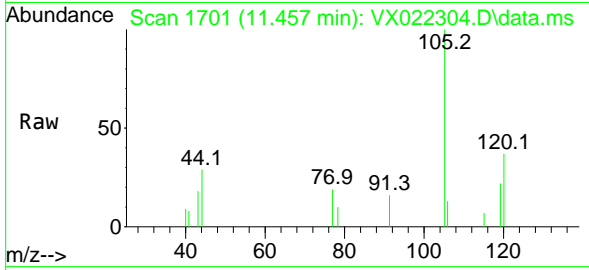




#80
 1,3,5-Trimethylbenzene
 Concen: 0.27 ug/l
 RT: 11.457 min Scan# 1701
 Delta R.T. 0.000 min
 Lab File: VX022304.D
 Acq: 01 Jun 2021 20:31

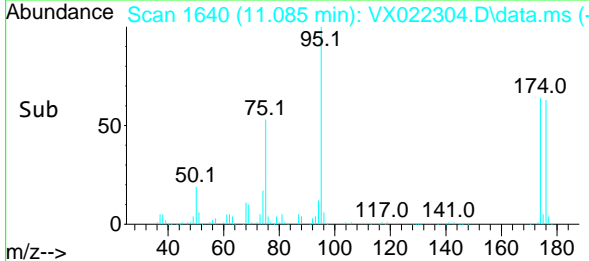
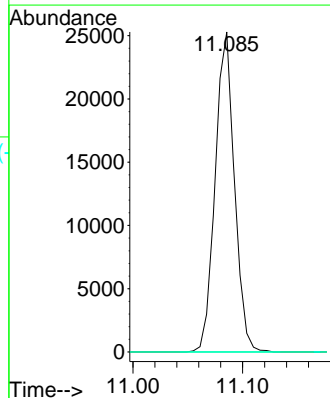
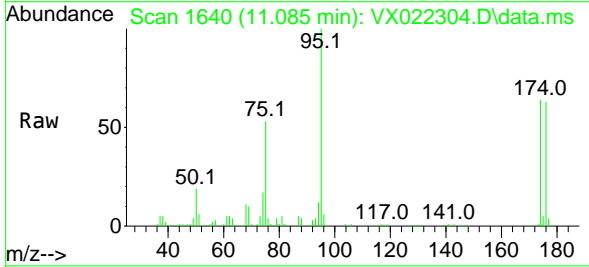
Instrument :
 MSVOA_X
 ClientSampled :
 S1-A-TOP

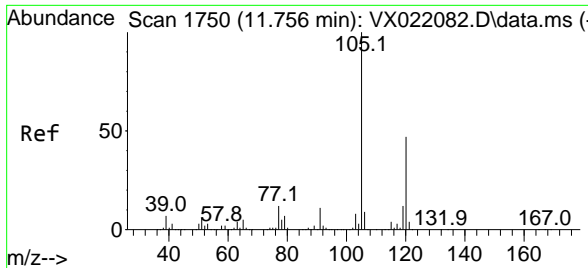
Tgt Ion:105 Resp: 914
 Ion Ratio Lower Upper
 105 100
 120 45.6 23.8 71.5



#81
 trans-1,4-Dichloro-2-butene
 Concen: 60.96 ug/l
 RT: 11.085 min Scan# 1640
 Delta R.T. 0.060 min
 Lab File: VX022304.D
 Acq: 01 Jun 2021 20:31

Tgt Ion: 75 Resp: 30867
 Ion Ratio Lower Upper
 75 100
 53 0.0 74.5 111.7#
 89 0.0 37.9 56.9#





#84
 1,2,4-Trimethylbenzene
 Concen: 0.30 ug/l
 RT: 11.756 min Scan# 1750
 Delta R.T. 0.000 min
 Lab File: VX022304.D
 Acq: 01 Jun 2021 20:31

Instrument :
 MSVOA_X
 ClientSampled :
 S1-A-TOP

Tgt Ion:105 Resp: 1014
 Ion Ratio Lower Upper
 105 100
 120 50.5 22.4 67.3

