

Data Path : Z:\voasrv\HPCHEM1\MSVOA_X\Data\VX060122\
 Data File : VX029111.D
 Acq On : 01 Jun 2022 12:27
 Operator : JC/MD
 Sample : N3022-02
 Misc : 5.0mL/MSVOA_X/WATER
 ALS Vial : 7 Sample Multiplier: 1

Instrument :
 MSVOA_X
 ClientSampleId :
 33S-20220525

Integration Parameters: RTEINT.P

Integrator: RTE
 Smoothing : ON Filtering: 5
 Sampling : 1 Min Area: 3 % of largest Peak
 Start Thrs: 0.2 Max Peaks: 100
 Stop Thrs : 0 Peak Location: TOP

If leading or trailing edge < 100 prefer < Baseline drop else tangent >
 Peak separation: 5

Method : Z:\voasrv\HPCHEM1\MSVOA_X\Method\82X053122W.M
 Title : SW846 8260

Signal : TIC: VX029111.D\data.ms

peak #	R.T. min	first scan	max scan	last scan	PK TY	peak height	corr. area	corr. % max.	% of total
1	2.538	230	238	248	rBV	24326	46869	2.61%	0.472%
2	2.946	297	305	317	rBV	14225	33337	1.85%	0.336%
3	5.391	694	706	721	rBV	224054	650023	36.15%	6.548%
4	5.556	722	733	753	rVB	350261	997778	55.49%	10.052%
5	5.958	788	799	813	rBV	209752	553279	30.77%	5.574%
6	6.763	921	931	946	rBV	555946	1321467	73.49%	13.313%
7	8.653	1234	1241	1250	rBV	1150092	1798167	100.00%	18.115%
8	10.055	1465	1471	1489	rBV	1257600	1637608	91.07%	16.498%
9	11.085	1634	1640	1650	rBV	952916	1273415	70.82%	12.829%
10	12.024	1788	1794	1803	rBV	1331871	1614357	89.78%	16.263%

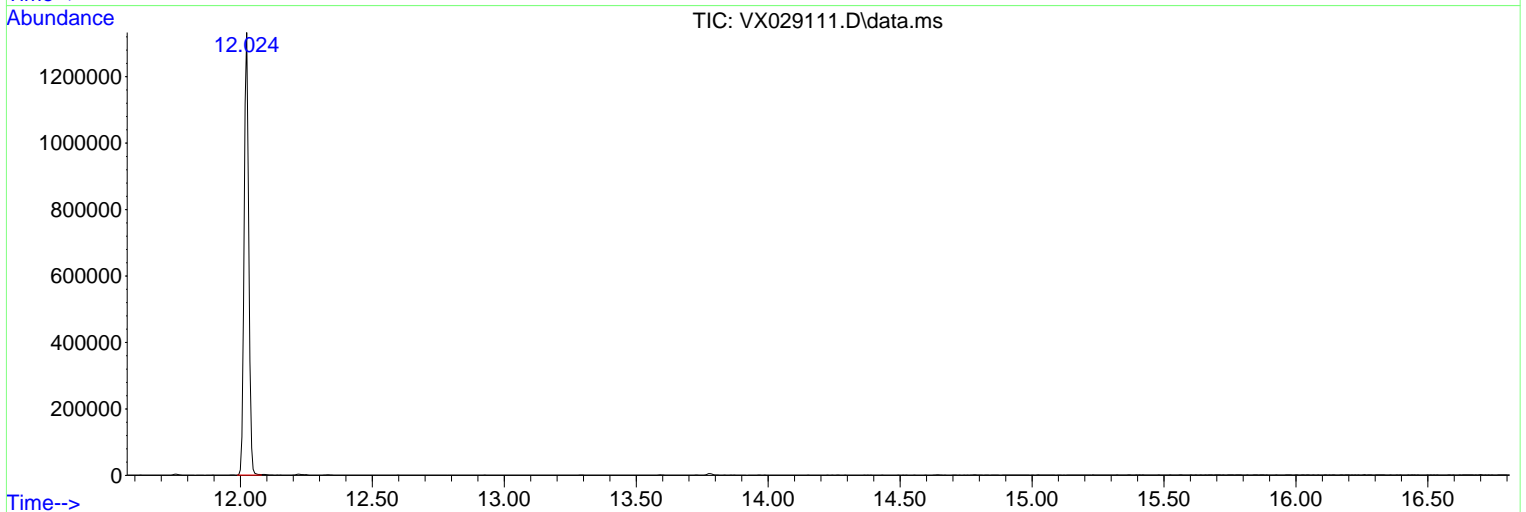
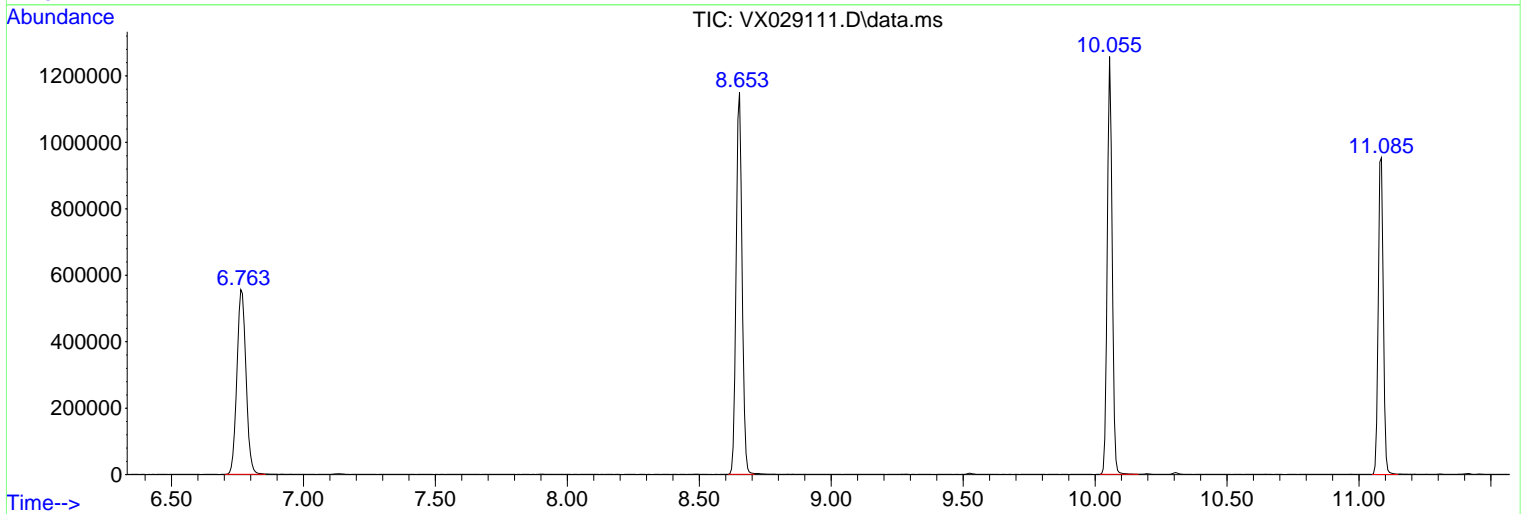
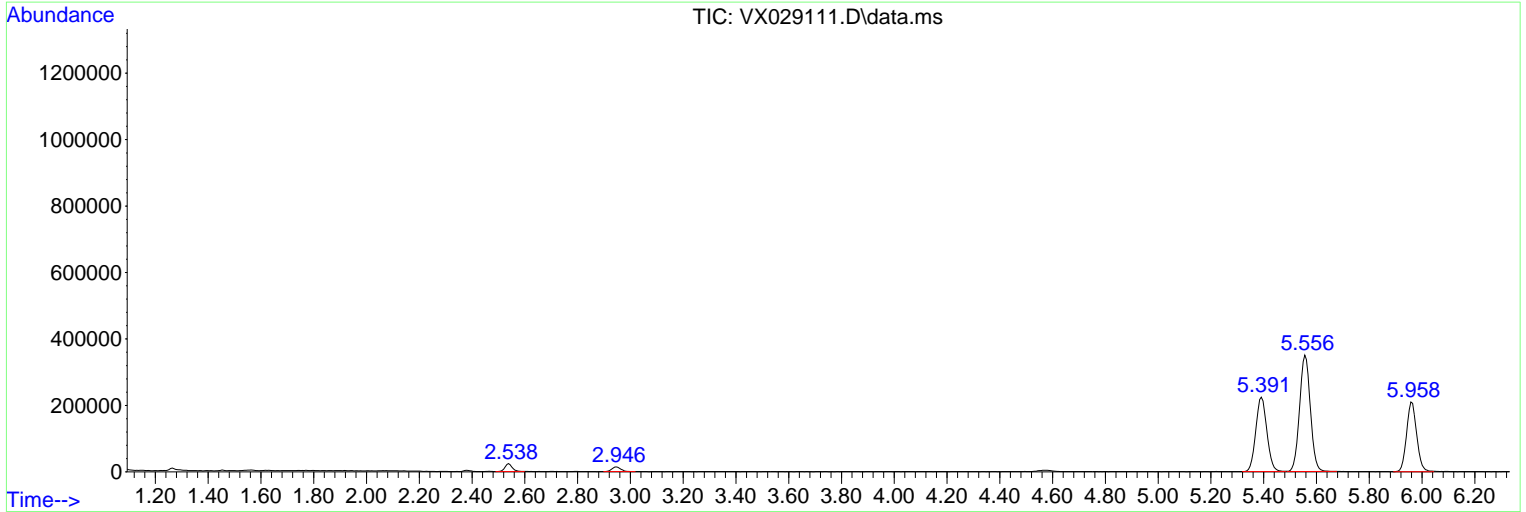
Sum of corrected areas: 9926300

Data Path : Z:\voasrv\HPCHEM1\MSVOA_X\Data\VX060122\
 Data File : VX029111.D
 Acq On : 01 Jun 2022 12:27
 Operator : JC/MD
 Sample : N3022-02
 Misc : 5.0mL/MSVOA_X/WATER
 ALS Vial : 7 Sample Multiplier: 1

Instrument :
 MSVOA_X
 ClientSampleId :
 33S-20220525

Quant Method : Z:\voasrv\HPCHEM1\MSVOA_X\Method\82X053122W.M
 Quant Title : SW846 8260

TIC Library : C:\Database\NIST20.L
 TIC Integration Parameters: LSCINT.P



Library Search Compound Report

Data Path : Z:\voasrv\HPCHEM1\MSVOA_X\Data\VX060122\
Data File : VX029111.D
Acq On : 01 Jun 2022 12:27
Operator : JC/MD
Sample : N3022-02
Misc : 5.0mL/MSVOA_X/WATER
ALS Vial : 7 Sample Multiplier: 1

Instrument :
MSVOA_X
ClientSampleId :
33S-20220525

Quant Method : Z:\voasrv\HPCHEM1\MSVOA_X\Method\82X053122W.M
Quant Title : SW846 8260

TIC Library : C:\Database\NIST20.L
TIC Integration Parameters: LSCINT.P

No Library Search Compounds Detected

Data Path : Z:\voasrv\HPCHEM1\MSVOA_X\Data\VX060122\
Data File : VX029111.D
Acq On : 01 Jun 2022 12:27
Operator : JC/MD
Sample : N3022-02
Misc : 5.0mL/MSVOA_X/WATER
ALS Vial : 7 Sample Multiplier: 1

Instrument :
MSVOA_X
ClientSampleId :
33S-20220525

Quant Method : Z:\voasrv\HPCHEM1\MSVOA_X\Method\82X053122W.M
Quant Title : SW846 8260

TIC Library : C:\Database\NIST20.L
TIC Integration Parameters: LSCINT.P

TIC Top Hit name	RT	EstConc	Units	Response	--Internal Standard--		
					#	RT	Resp Conc
