

Data Path : Z:\VOASRV\HPCHEM1\MSVOA X\DATA\VX060220\
 Data File : VX016553.D
 Acq On : 02 Jun 2020 15:34
 Operator : JC/SP
 Sample : L2854-07
 Misc : 5.0mL/MSVOA X/WATER
 ALS Vial : 10 Sample Multiplier: 1

Instrument :
 MSVOA_X
 ClientSampleId :
 TRIP-BLANK

Quant Time: Jun 03 04:08:07 2020
 Quant Method : Z:\VOASRV\HPCHEM1\MSVOA_X\METHOD\82X052720W.M
 Quant Title : SW846 8260
 QLast Update : Wed May 27 16:31:05 2020
 Response via : Initial Calibration

Internal Standards	R.T.	QIon	Response	Conc	Units	Dev(Min)
1) Pentafluorobenzene	5.62	168	354967	50.00	ug/l	0.00
34) 1,4-Difluorobenzene	6.82	114	580703	50.00	ug/l	0.00
63) Chlorobenzene-d5	10.09	117	590982	50.00	ug/l	0.00
72) 1,4-Dichlorobenzene-d4	12.06	152	304307	50.00	ug/l	0.00

System Monitoring Compounds

33) 1,2-Dichloroethane-d4	6.03	65	207545	47.08	ug/l	0.00
Spiked Amount	50.000		Recovery	=	94.16%	
35) Dibromofluoromethane	5.46	113	168010	46.99	ug/l	0.00
Spiked Amount	50.000		Recovery	=	93.98%	
50) Toluene-d8	8.70	98	732091	52.60	ug/l	0.00
Spiked Amount	50.000		Recovery	=	105.20%	
62) 4-Bromofluorobenzene	11.12	95	297580	55.34	ug/l	0.00
Spiked Amount	50.000		Recovery	=	110.68%	

Target Compounds

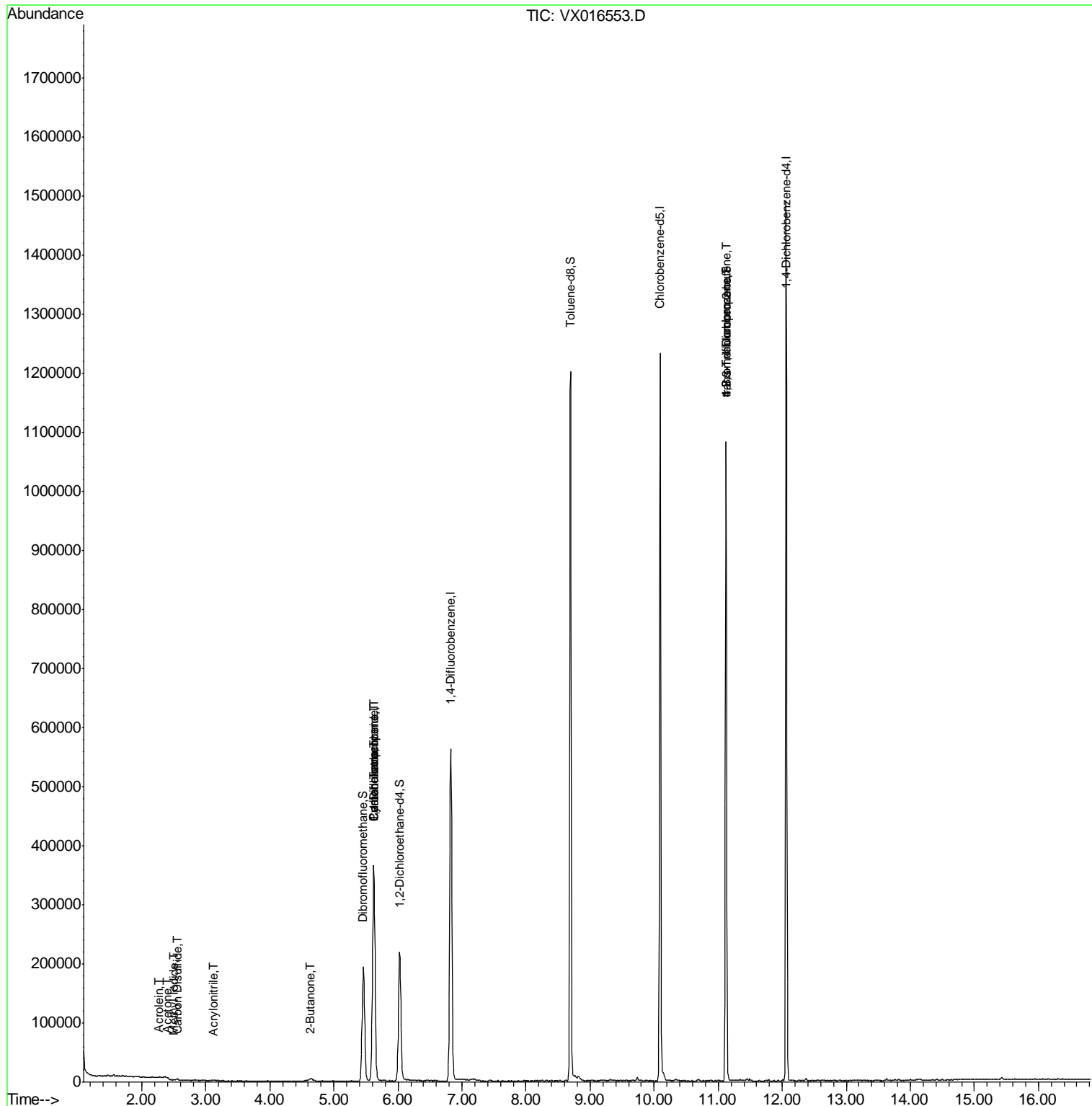
						Qvalue
10) Methyl Iodide	2.50	142	222	3.109	ug/l #	83
13) Acrolein	2.27	56	654	1.360	ug/l #	78
15) Acrylonitrile	3.12	53	913	0.394	ug/l	88
16) Acetone	2.41	43	1609	0.833	ug/l #	81
17) Carbon Disulfide	2.55	76	3223	0.318	ug/l #	90
25) 2-Butanone	4.63	43	1308	0.400	ug/l	97
31) Cyclohexane	5.62	56	6812	1.112	ug/l #	1
36) 1,1-Dichloropropene	5.62	75	25583	4.653	ug/l #	50
38) Carbon Tetrachloride	5.62	117	34048	5.893	ug/l #	16
76) 1,2,3-Trichloropropane	11.12	75	143304	21.424	ug/l #	35
81) trans-1,4-Dichloro-2-buten	11.12	75	143304	52.701	ug/l #	14

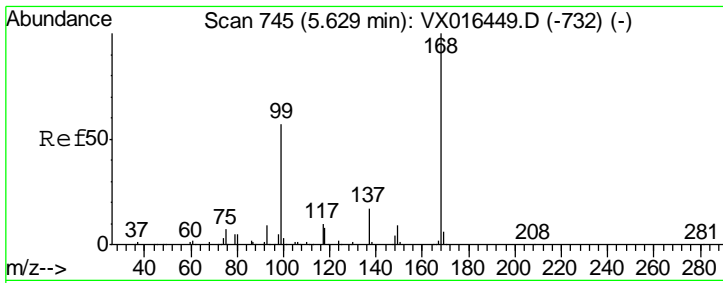
(#) = qualifier out of range (m) = manual integration (+) = signals summed

Data Path : Z:\VOASRV\HPCHEM1\MSVOA X\DATA\VX060220\
 Data File : VX016553.D
 Acq On : 02 Jun 2020 15:34
 Operator : JC/SP
 Sample : L2854-07
 Misc : 5.0mL/MSVOA X/WATER
 ALS Vial : 10 Sample Multiplier: 1

Instrument :
 MSVOA_X
 Client Sampled :
 TRIP-BLANK

Quant Time: Jun 03 04:08:07 2020
 Quant Method : Z:\VOASRV\HPCHEM1\MSVOA_X\METHOD\82X052720W.M
 Quant Title : SW846 8260
 QLast Update : Wed May 27 16:31:05 2020
 Response via : Initial Calibration

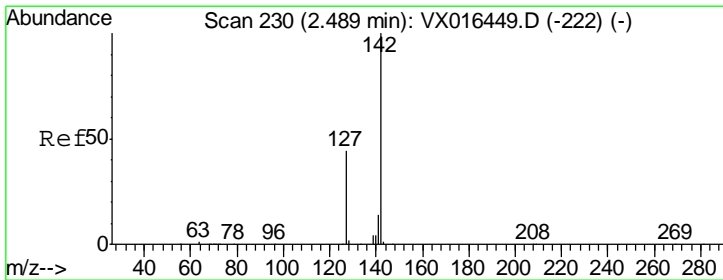
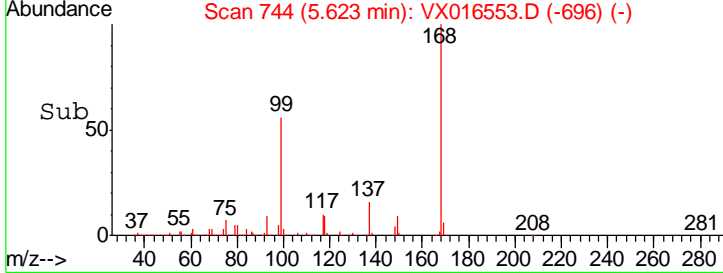
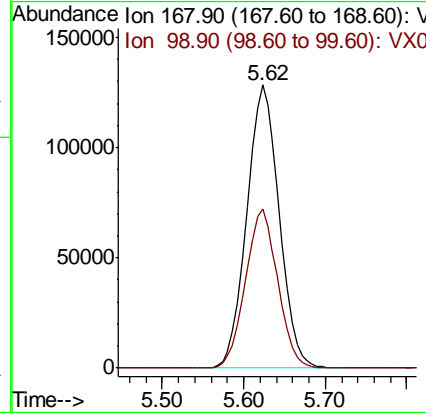
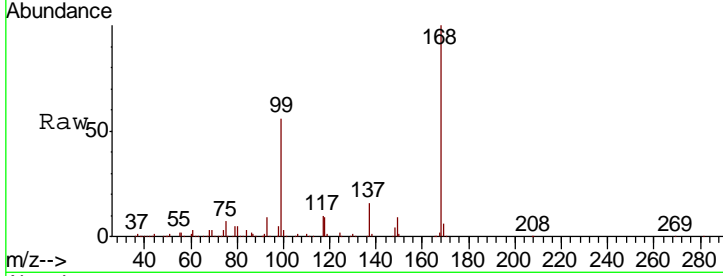




#1
 Pentafluorobenzene
 Concen: 50.000 ug/l
 RT: 5.62 min Scan# 744
 Delta R.T. -0.01 min
 Lab File: VX016553.D
 Acq: 02 Jun 2020 15:34

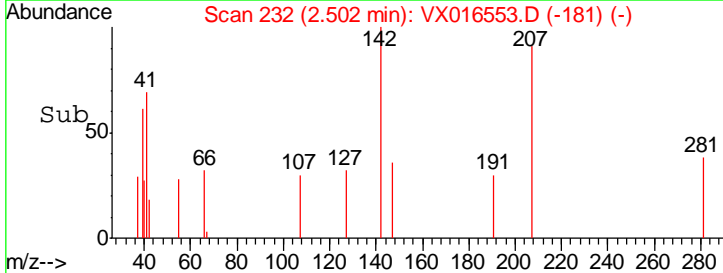
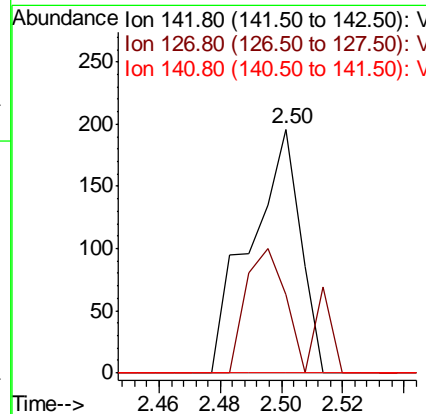
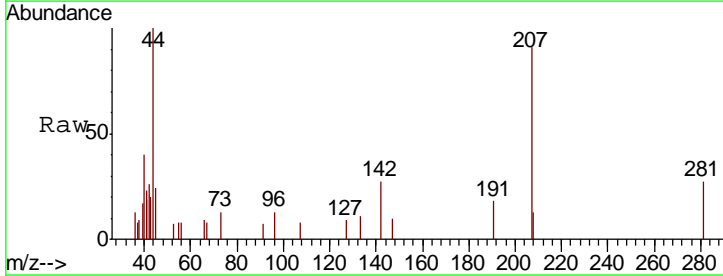
Instrument :
 MSVOA_X
 ClientSampled :
 TRIP-BLANK

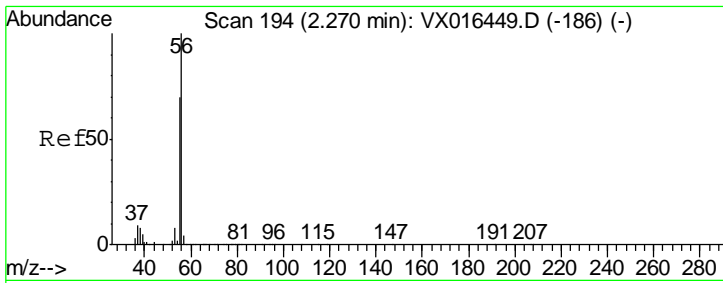
Tgt Ion	Resp	Lower	Upper
168	100		
99	56.1	45.2	67.8



#10
 Methyl Iodide
 Concen: 3.109 ug/l
 RT: 2.50 min Scan# 232
 Delta R.T. 0.01 min
 Lab File: VX016553.D
 Acq: 02 Jun 2020 15:34

Tgt Ion	Resp	Lower	Upper
142	100		
127	51.4	35.3	52.9
141	0.0	11.4	17.2#

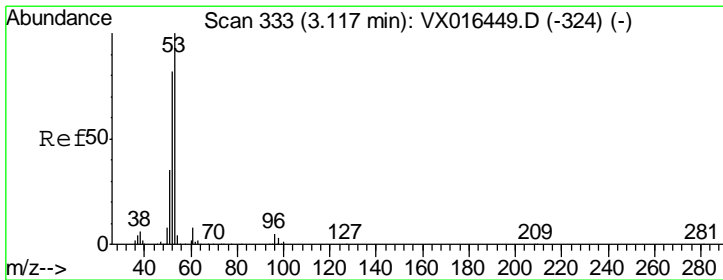
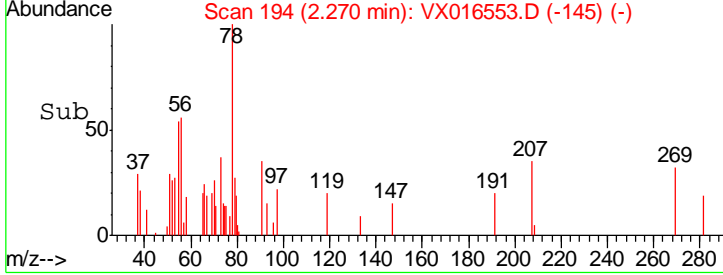
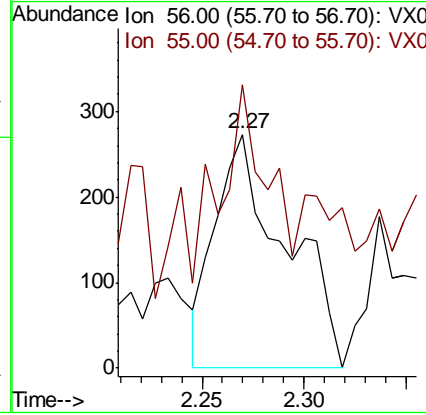
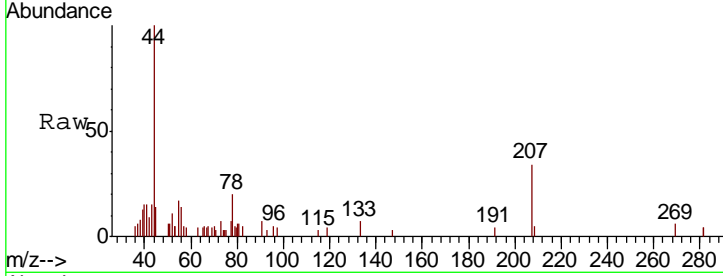




#13
 Acrolein
 Concen: 1.360 ug/l
 RT: 2.27 min Scan# 194
 Delta R.T. -0.00 min
 Lab File: VX016553.D
 Acq: 02 Jun 2020 15:34

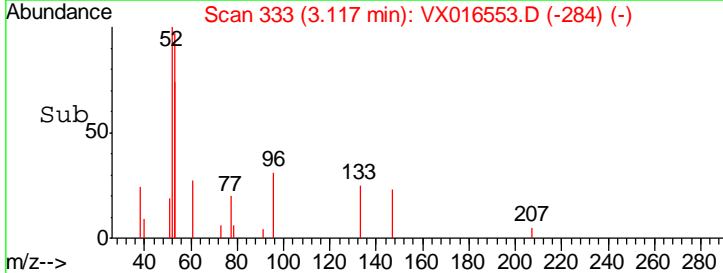
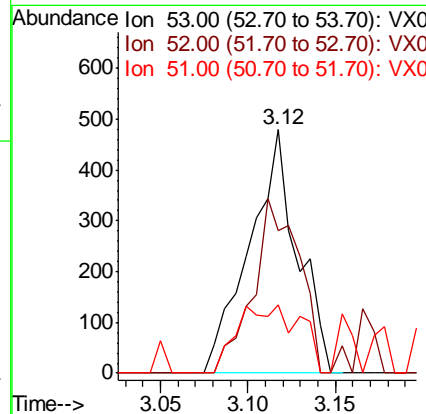
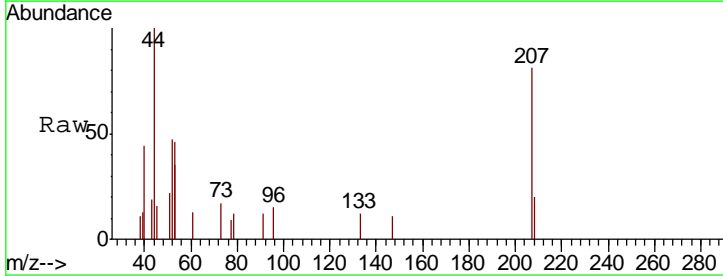
Instrument :
 MSVOA_X
 ClientSampled :
 TRIP-BLANK

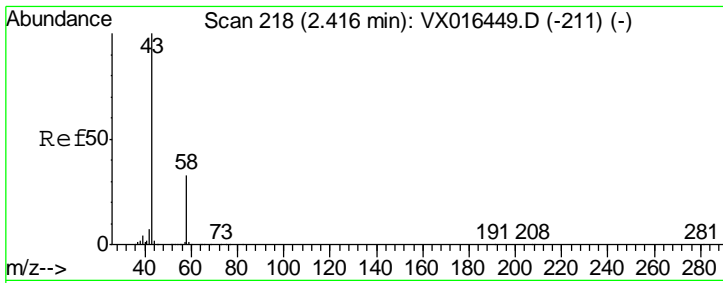
Tgt Ion: 56 Resp: 654
 Ion Ratio Lower Upper
 56 100
 55 54.1 58.3 87.5#



#15
 Acrylonitrile
 Concen: 0.394 ug/l
 RT: 3.12 min Scan# 333
 Delta R.T. -0.00 min
 Lab File: VX016553.D
 Acq: 02 Jun 2020 15:34

Tgt Ion: 53 Resp: 913
 Ion Ratio Lower Upper
 53 100
 52 68.6 66.7 100.1
 51 36.7 28.6 43.0

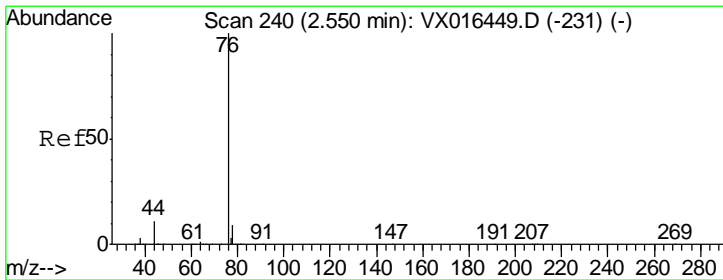
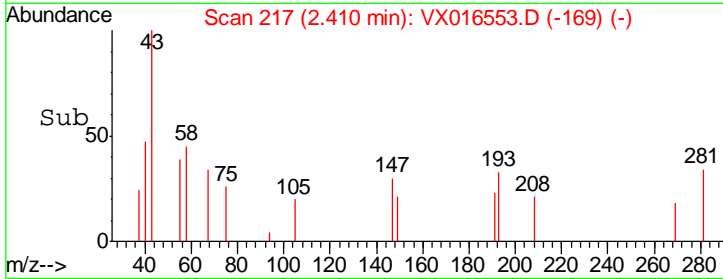
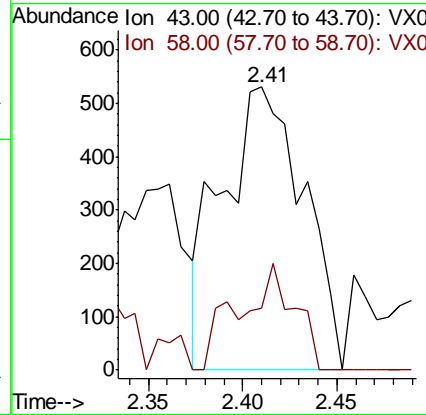
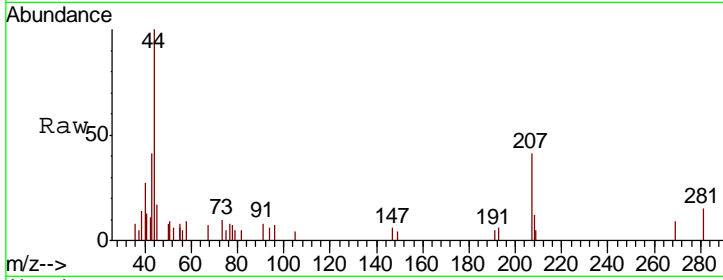




#16
 Acetone
 Concen: 0.833 ug/l
 RT: 2.41 min Scan# 217
 Delta R.T. -0.01 min
 Lab File: VX016553.D
 Acq: 02 Jun 2020 15:34

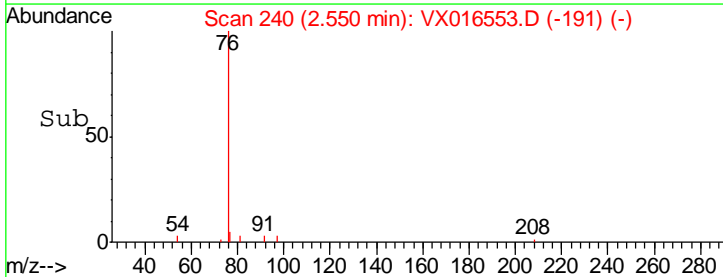
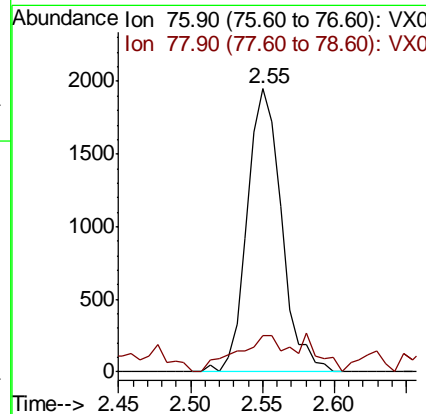
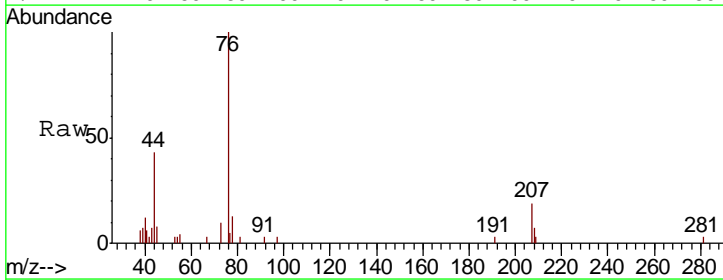
Instrument :
 MSVOA_X
 ClientSampled :
 TRIP-BLANK

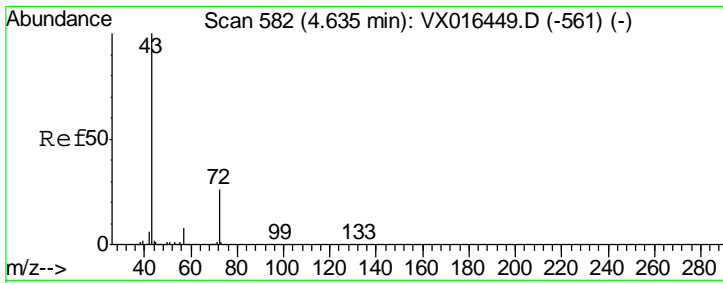
Tgt Ion: 43 Resp: 1609
 Ion Ratio Lower Upper
 43 100
 58 21.8 26.1 39.1#



#17
 Carbon Disulfide
 Concen: 0.318 ug/l
 RT: 2.55 min Scan# 240
 Delta R.T. -0.00 min
 Lab File: VX016553.D
 Acq: 02 Jun 2020 15:34

Tgt Ion: 76 Resp: 3223
 Ion Ratio Lower Upper
 76 100
 78 12.8 7.4 11.0#

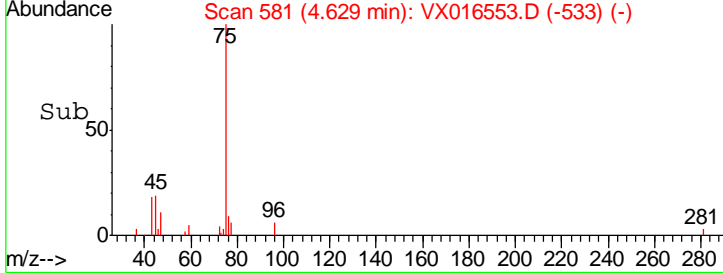
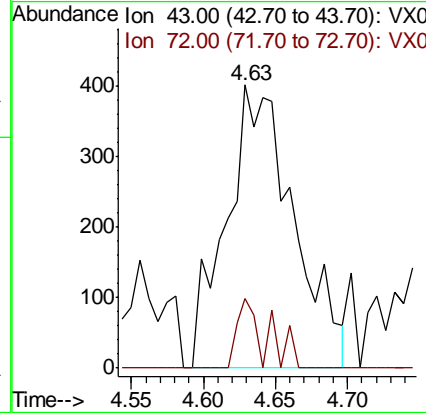
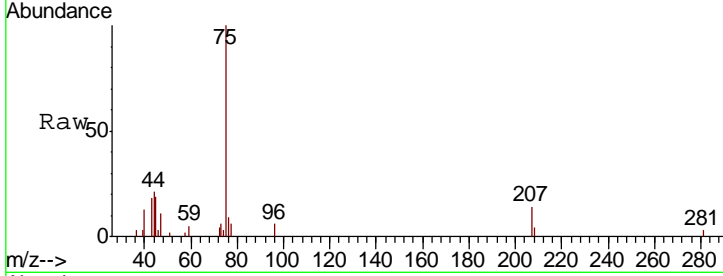




#25
 2-Butanone
 Concen: 0.400 ug/l
 RT: 4.63 min Scan# 581
 Delta R.T. -0.01 min
 Lab File: VX016553.D
 Acq: 02 Jun 2020 15:34

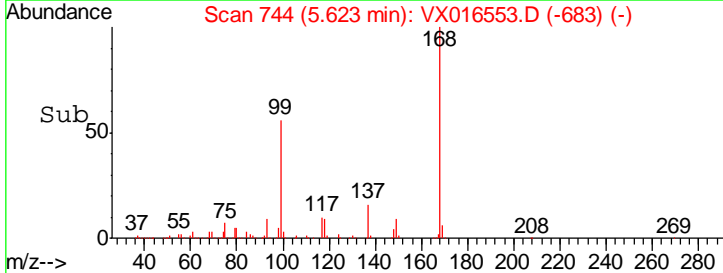
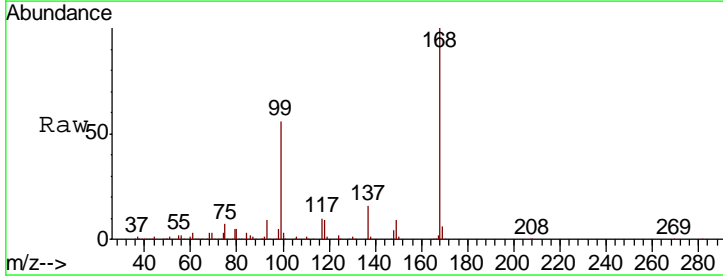
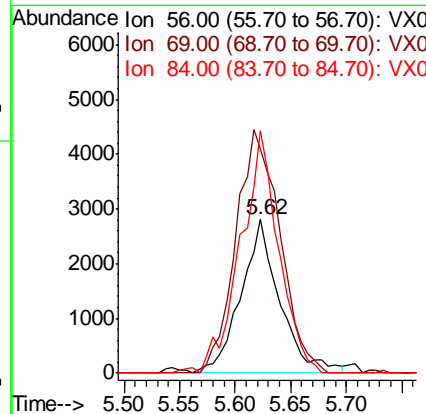
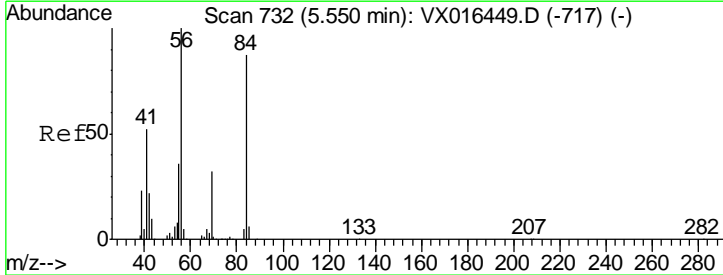
Instrument :
 MSVOA_X
ClientSampled :
 TRIP-BLANK

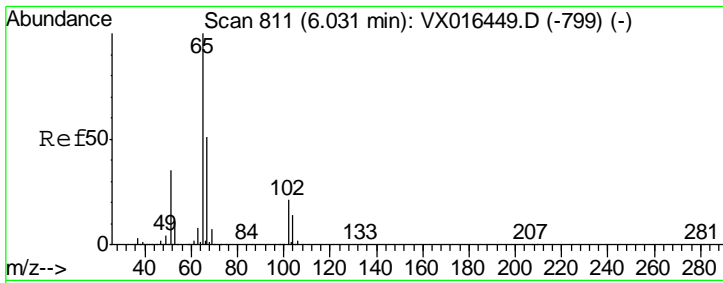
Tgt Ion	Resp	Lower	Upper
43	1308		
72	24.6	21.0	31.6



#31
 Cyclohexane
 Concen: 1.112 ug/l
 RT: 5.62 min Scan# 744
 Delta R.T. 0.07 min
 Lab File: VX016553.D
 Acq: 02 Jun 2020 15:34

Tgt Ion	Resp	Lower	Upper
56	6812		
69	146.2	25.7	38.5#
84	157.3	70.0	105.0#

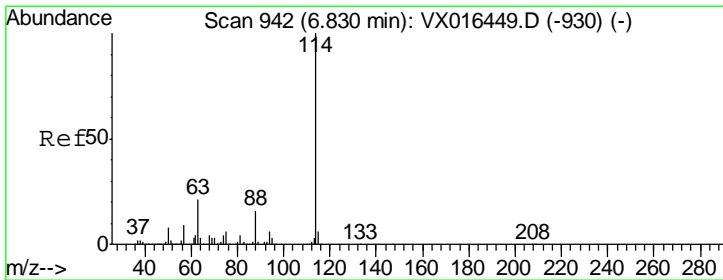
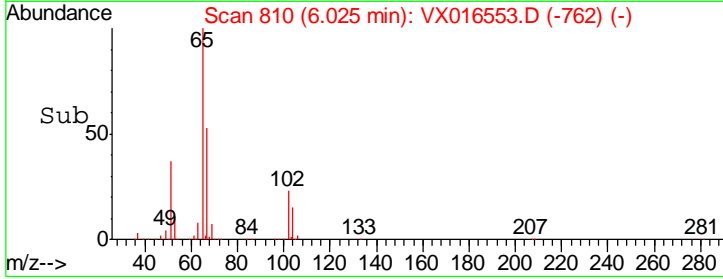
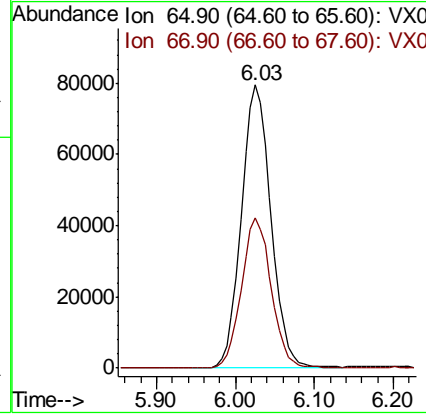
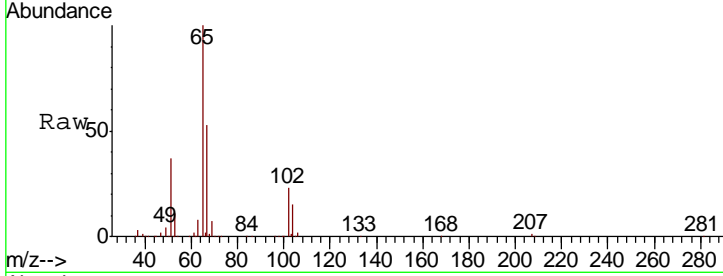




#33
 1,2-Dichloroethane-d4
 Concen: 47.081 ug/l
 RT: 6.03 min Scan# 810
 Delta R.T. -0.01 min
 Lab File: VX016553.D
 Acq: 02 Jun 2020 15:34

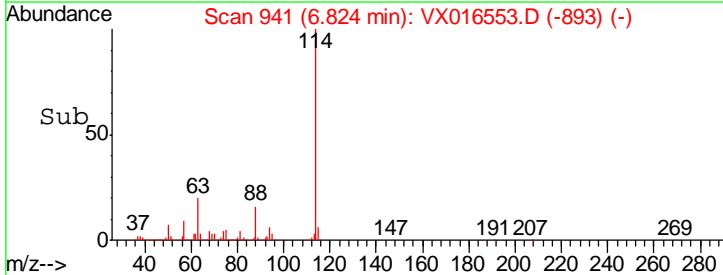
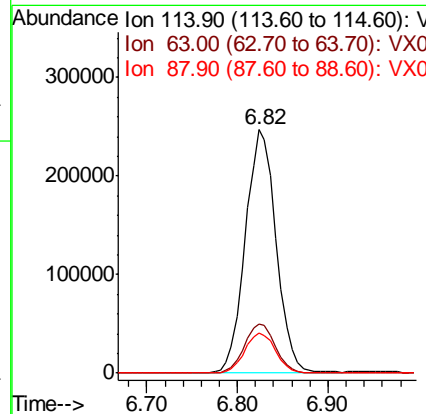
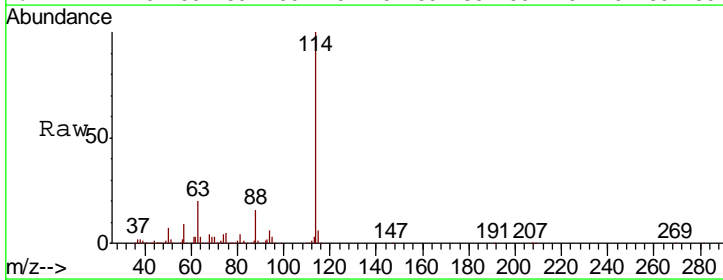
Instrument :
 MSVOA_X
 ClientSampled :
 TRIP-BLANK

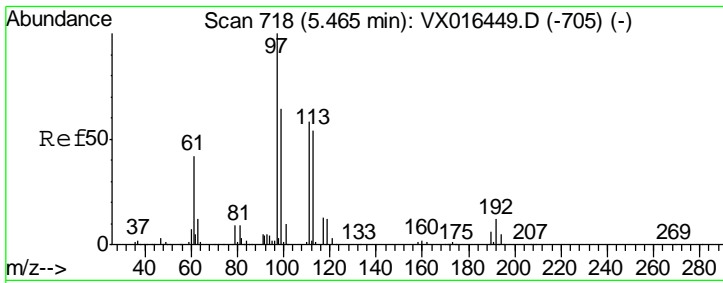
Tgt Ion	Resp	Lower	Upper
65	100		
67	53.2	0.0	104.8



#34
 1,4-Difluorobenzene
 Concen: 50.000 ug/l
 RT: 6.82 min Scan# 941
 Delta R.T. -0.01 min
 Lab File: VX016553.D
 Acq: 02 Jun 2020 15:34

Tgt Ion	Resp	Lower	Upper
114	100		
63	20.2	0.0	42.6
88	16.5	0.0	32.8

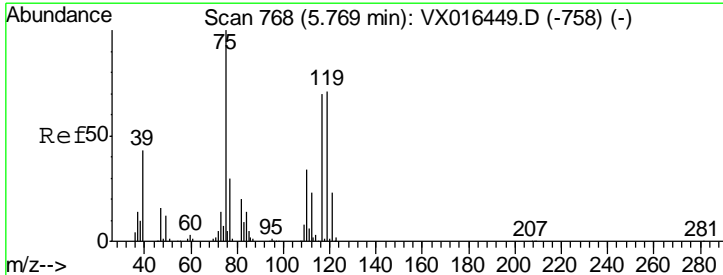
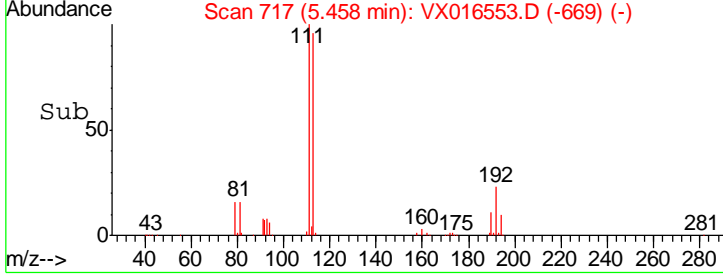
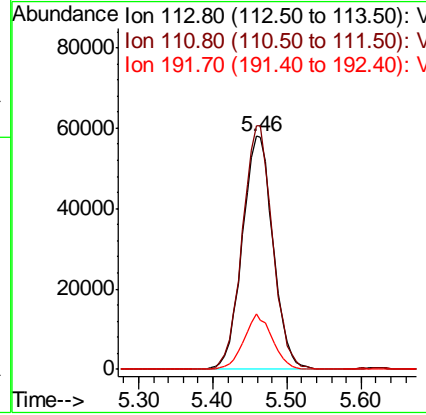
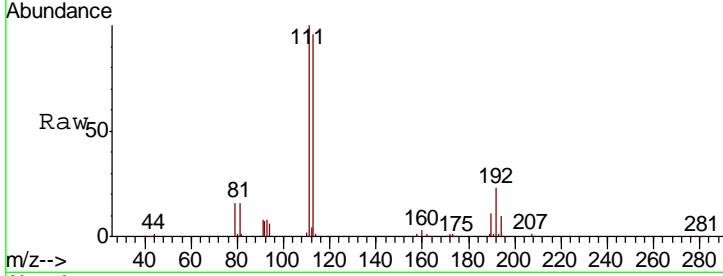




#35
 Dibromofluoromethane
 Concen: 46.987 ug/l
 RT: 5.46 min Scan# 717
 Delta R.T. -0.01 min
 Lab File: VX016553.D
 Acq: 02 Jun 2020 15:34

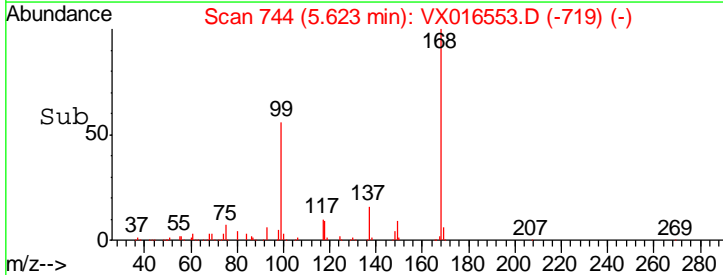
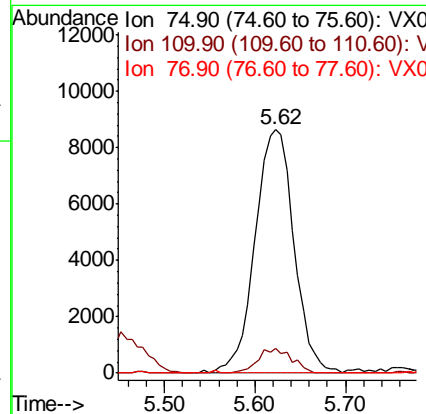
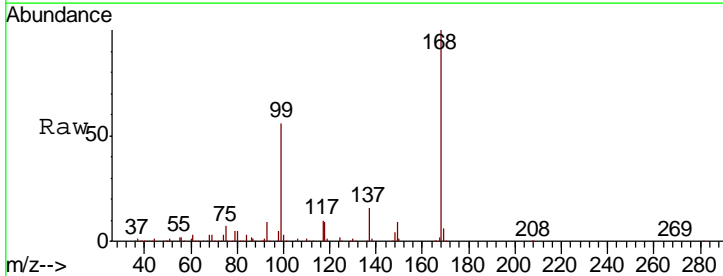
Instrument :
 MSVOA_X
 ClientSampled :
 TRIP-BLANK

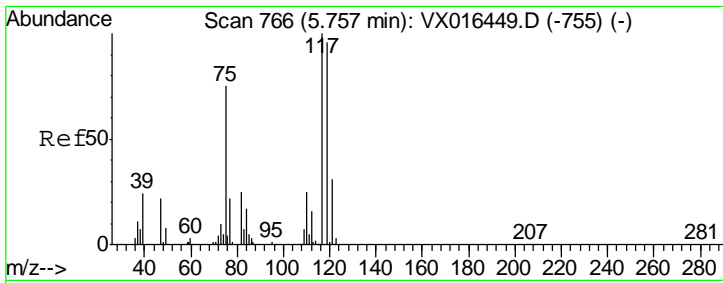
Tgt Ion	Resp	Lower	Upper
113	168010		
113	100		
111	102.3	83.0	124.6
192	21.9	17.7	26.5



#36
 1,1-Dichloropropene
 Concen: 4.653 ug/l
 RT: 5.62 min Scan# 744
 Delta R.T. -0.15 min
 Lab File: VX016553.D
 Acq: 02 Jun 2020 15:34

Tgt Ion	Resp	Lower	Upper
75	25583		
75	100		
110	9.0	17.4	52.3#
77	0.0	24.2	36.4#

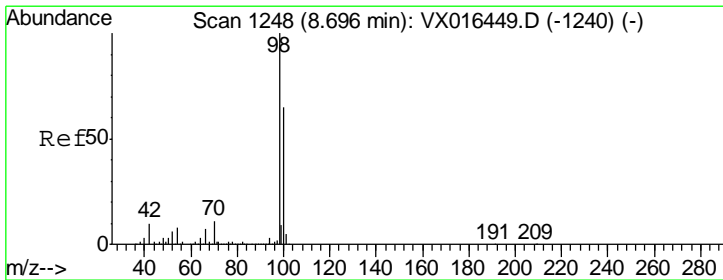
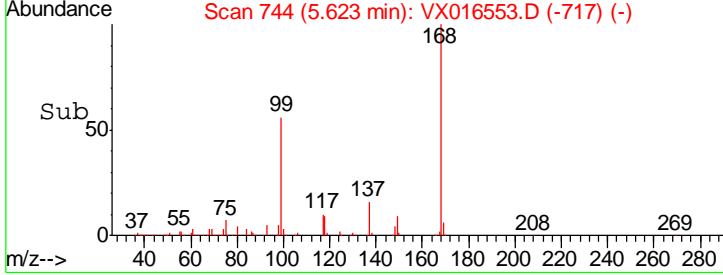
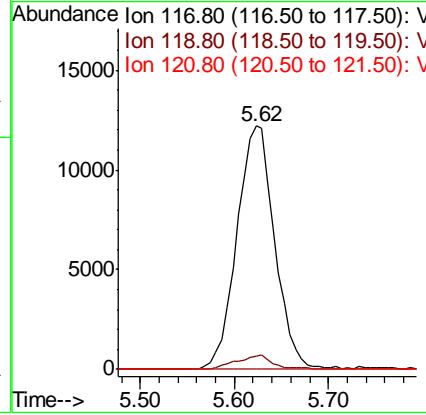
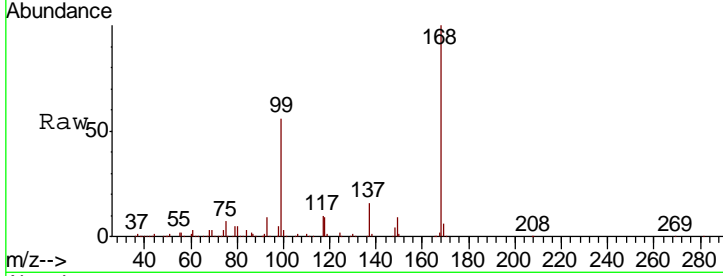




#38
 Carbon Tetrachloride
 Concen: 5.893 ug/l
 RT: 5.62 min Scan# 744
 Delta R.T. -0.13 min
 Lab File: VX016553.D
 Acq: 02 Jun 2020 15:34

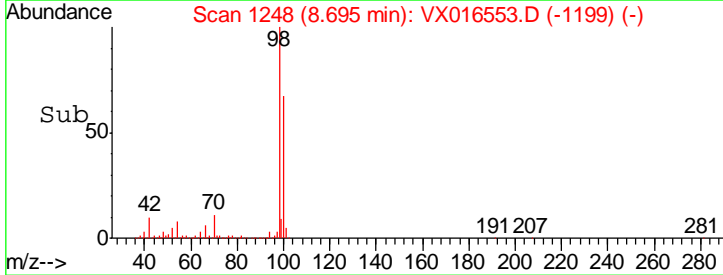
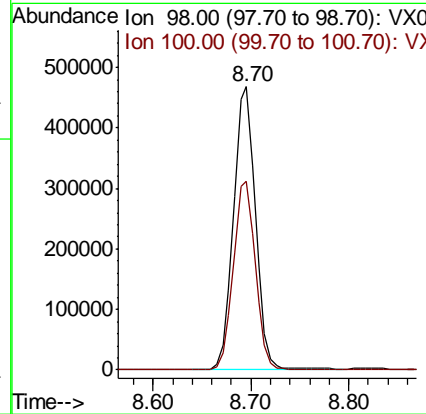
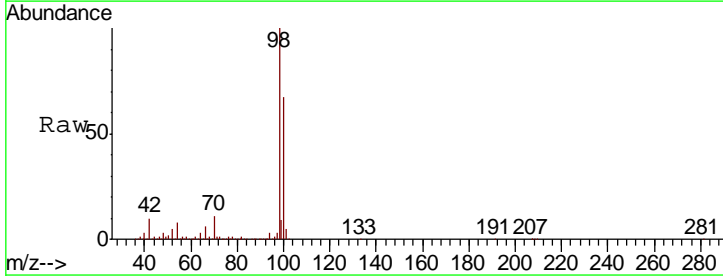
Instrument :
 MSVOA_X
 ClientSampled :
 TRIP-BLANK

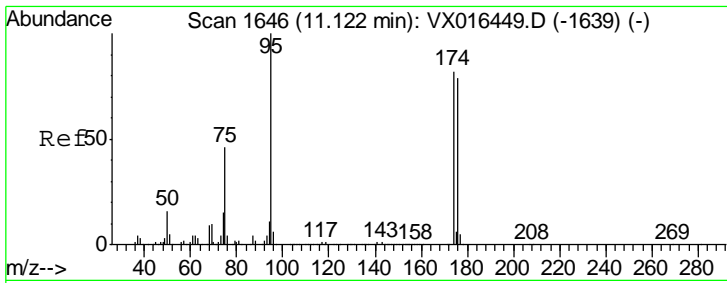
Tgt Ion	Resp	Lower	Upper
117	34048		
119	5.5	76.3	114.5#
121	0.0	24.6	37.0#



#50
 Toluene-d8
 Concen: 52.603 ug/l
 RT: 8.70 min Scan# 1248
 Delta R.T. -0.00 min
 Lab File: VX016553.D
 Acq: 02 Jun 2020 15:34

Tgt Ion	Resp	Lower	Upper
98	732091		
100	66.9	53.8	80.6

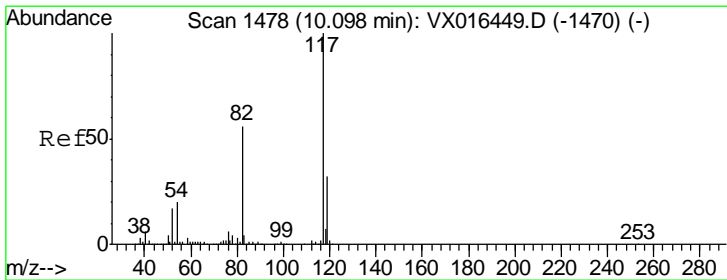
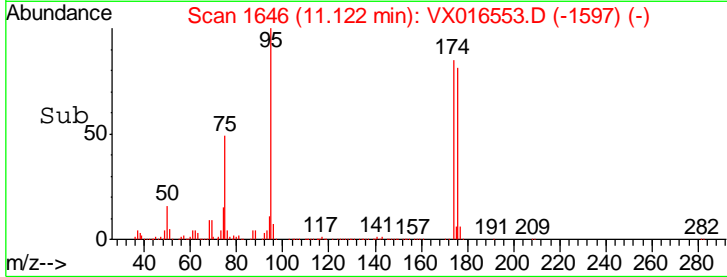
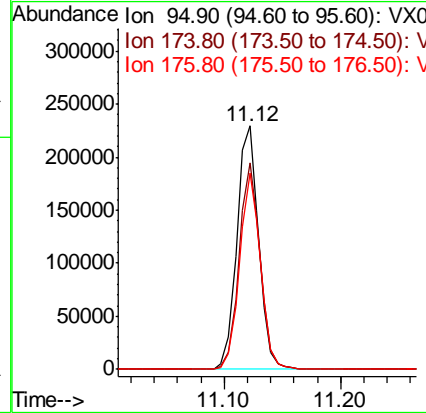
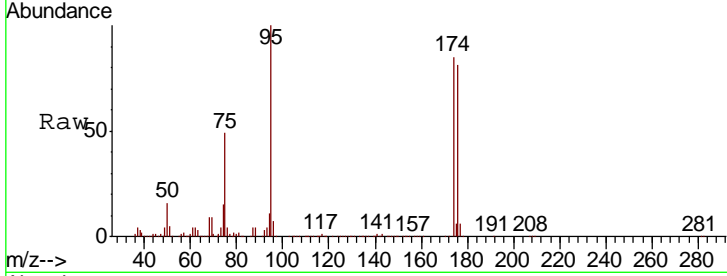




#62
 4-Bromofluorobenzene
 Concen: 55.337 ug/l
 RT: 11.12 min Scan# 1646
 Delta R.T. -0.00 min
 Lab File: VX016553.D
 Acq: 02 Jun 2020 15:34

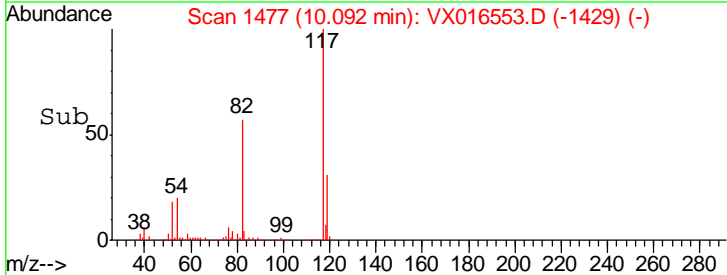
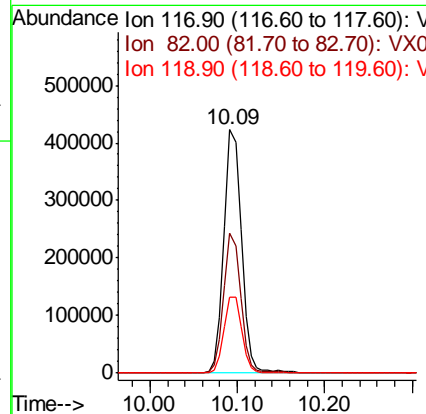
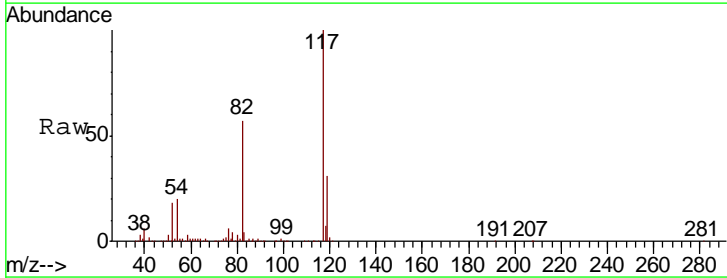
Instrument :
 MSVOA_X
 ClientSampled :
 TRIP-BLANK

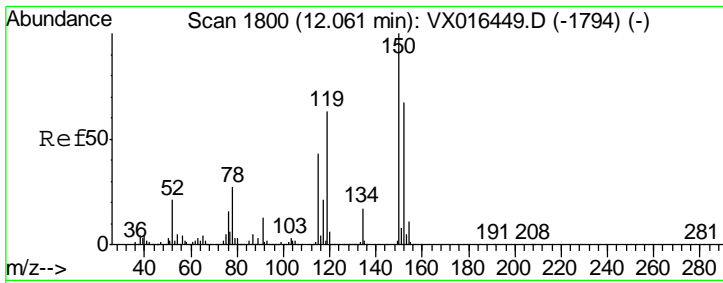
Tgt Ion	Resp	Lower	Upper
95	297580		
174	82.0	0.0	163.0
176	77.7	0.0	156.8



#63
 Chlorobenzene-d5
 Concen: 50.000 ug/l
 RT: 10.09 min Scan# 1477
 Delta R.T. -0.01 min
 Lab File: VX016553.D
 Acq: 02 Jun 2020 15:34

Tgt Ion	Resp	Lower	Upper
117	590982		
82	57.4	45.0	67.6
119	31.3	25.8	38.8

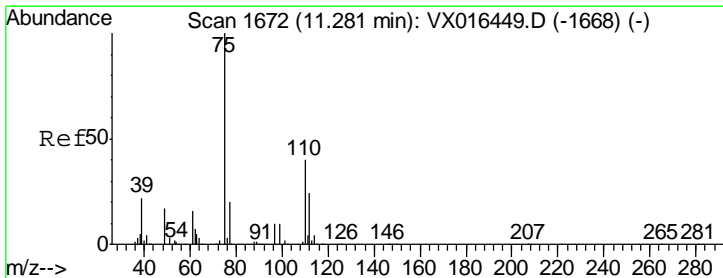
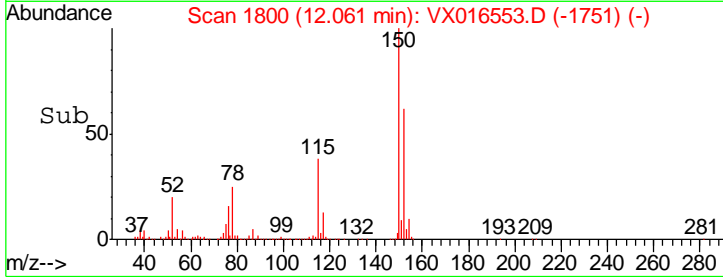
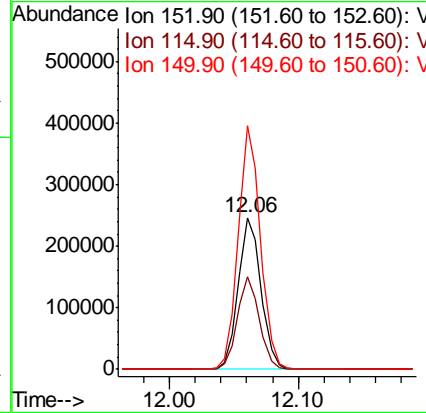
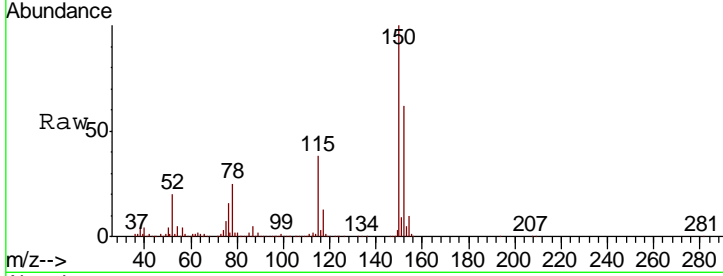




#72
 1,4-Dichlorobenzene-d4
 Concen: 50.000 ug/l
 RT: 12.06 min Scan# 1800
 Delta R.T. -0.00 min
 Lab File: VX016553.D
 Acq: 02 Jun 2020 15:34

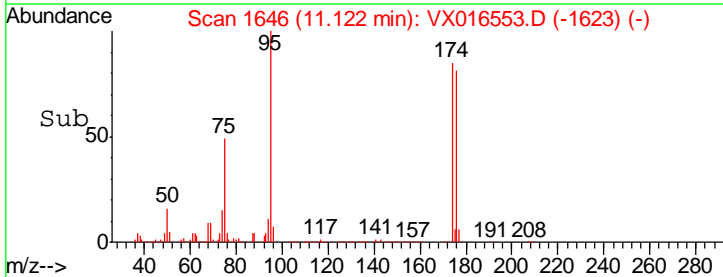
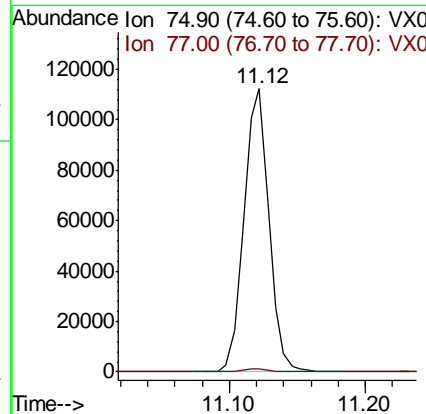
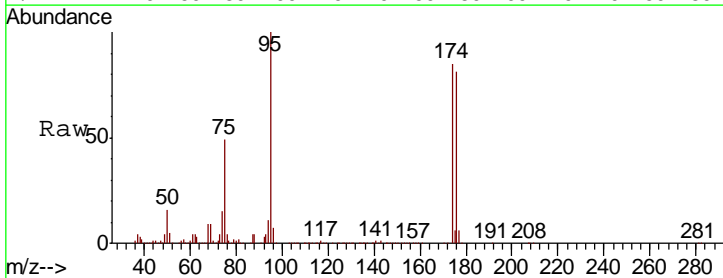
Instrument :
 MSVOA_X
 ClientSampled :
 TRIP-BLANK

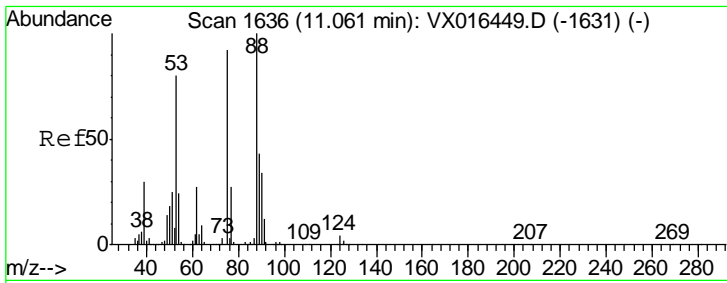
Tgt Ion	Resp	Lower	Upper
152	100		
115	59.0	39.9	119.6
150	156.6	0.0	341.0



#76
 1,2,3-Trichloropropane
 Concen: 21.424 ug/l
 RT: 11.12 min Scan# 1646
 Delta R.T. -0.16 min
 Lab File: VX016553.D
 Acq: 02 Jun 2020 15:34

Tgt Ion	Resp	Lower	Upper
75	100		
77	1.3	21.3	63.7#





#81
 trans-1,4-Dichloro-2-butene
 Concen: 52.701 ug/l
 RT: 11.12 min Scan# 1646
 Delta R.T. 0.06 min
 Lab File: VX016553.D
 Acq: 02 Jun 2020 15:34

Instrument :
 MSVOA_X
 ClientSampled :
 TRIP-BLANK

Tot Ion	Ion	Ratio	Lower	Upper
75	100			
53	0.0	71.3	106.9#	
89	0.0	36.6	55.0#	

