

Data Path : Z:\voasrv\HPCHEM1\MSVOA_X\Data\VX060321\
 Data File : VX022353.D
 Acq On : 03 Jun 2021 10:05
 Operator : JC/MD
 Sample : VX0603WBL01
 Misc : 5.0mL/MSVOA_X/WATER
 ALS Vial : 3 Sample Multiplier: 1

Instrument :
 MSVOA_X
 ClientSampled :

Quant Time: Jun 03 13:02:57 2021
 Quant Method : Z:\voasrv\HPCHEM1\MSVOA_X\Method\82X051921W.M
 Quant Title : SW846 8260
 QLast Update : Wed May 19 14:23:10 2021
 Response via : Initial Calibration

Compound	R.T.	QIon	Response	Conc	Units	Dev(Min)

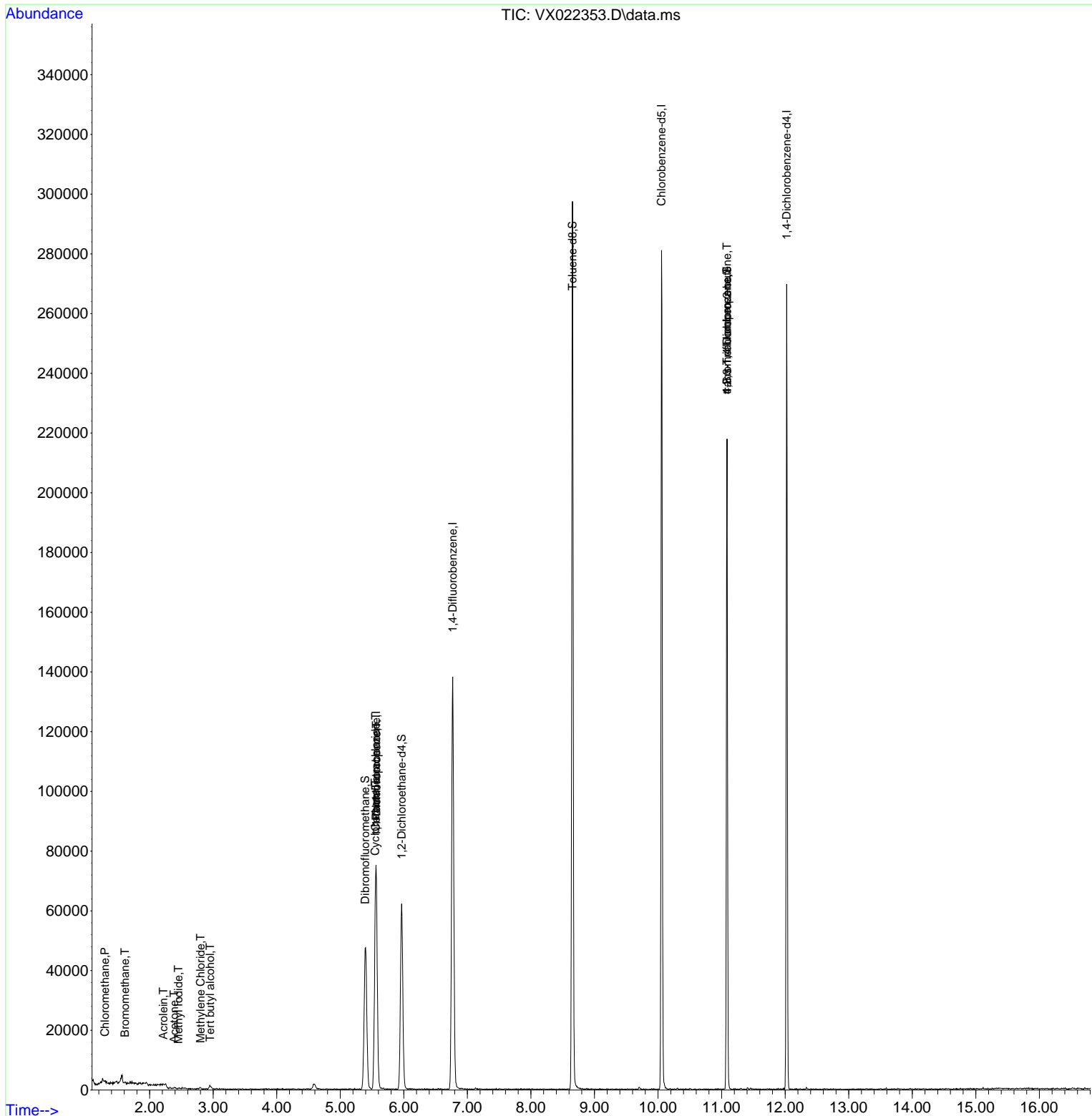
Internal Standards						
1) Pentafluorobenzene	5.562	168	65843	50.00	ug/l	# 0.00
34) 1,4-Difluorobenzene	6.769	114	137374	50.00	ug/l	0.00
63) Chlorobenzene-d5	10.055	117	121606	50.00	ug/l	0.00
72) 1,4-Dichlorobenzene-d4	12.024	152	46219	50.00	ug/l	0.00
System Monitoring Compounds						
33) 1,2-Dichloroethane-d4	5.964	65	56219	55.35	ug/l	0.00
Spiked Amount	50.000	Range	78 - 117	Recovery	=	110.70%
35) Dibromofluoromethane	5.391	113	41431	47.56	ug/l	0.00
Spiked Amount	50.000	Range	75 - 124	Recovery	=	95.12%
50) Toluene-d8	8.653	98	170239	50.73	ug/l	0.00
Spiked Amount	50.000	Range	92 - 112	Recovery	=	101.46%
62) 4-Bromofluorobenzene	11.085	95	59315	47.82	ug/l	0.00
Spiked Amount	50.000	Range	83 - 123	Recovery	=	95.64%
Target Compounds						
						Qvalue
3) Chloromethane	1.294	50	208	0.24	ug/l	# 42
5) Bromomethane	1.611	94	220	0.41	ug/l	# 40
10) Methyl Iodide	2.453	142	311	0.37	ug/l	# 53
11) Tert butyl alcohol	2.952	59	720	3.10	ug/l	# 73
13) Acrolein	2.215	56	49	0.32	ug/l	# 1
16) Acetone	2.385	43	542	1.23	ug/l	# 40
20) Methylene Chloride	2.800	84	240	0.24	ug/l	# 80
31) Cyclohexane	5.550	56	1617	1.27	ug/l	# 17
36) 1,1-Dichloropropene	5.568	75	6594	5.19	ug/l	# 49
38) Carbon Tetrachloride	5.556	117	7544	6.07	ug/l	# 17
76) 1,2,3-Trichloropropane	11.085	75	31047	27.23	ug/l	# 39
81) trans-1,4-Dichloro-2-b...	11.085	75	31047	64.51	ug/l	# 12

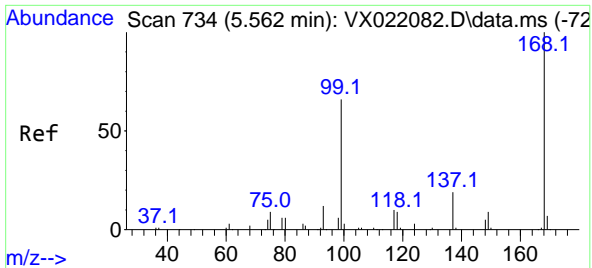
(#) = qualifier out of range (m) = manual integration (+) = signals summed

Data Path : Z:\voasrv\HPCHEM1\MSVOA_X\Data\VX060321\
 Data File : VX022353.D
 Acq On : 03 Jun 2021 10:05
 Operator : JC/MD
 Sample : VX0603WBL01
 Misc : 5.0mL/MSVOA_X/WATER
 ALS Vial : 3 Sample Multiplier: 1

Instrument :
 MSVOA_X
 ClientSampled :

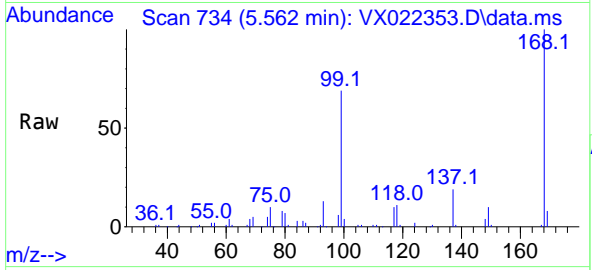
Quant Time: Jun 03 13:02:57 2021
 Quant Method : Z:\voasrv\HPCHEM1\MSVOA_X\Method\82X051921W.M
 Quant Title : SW846 8260
 QLast Update : Wed May 19 14:23:10 2021
 Response via : Initial Calibration



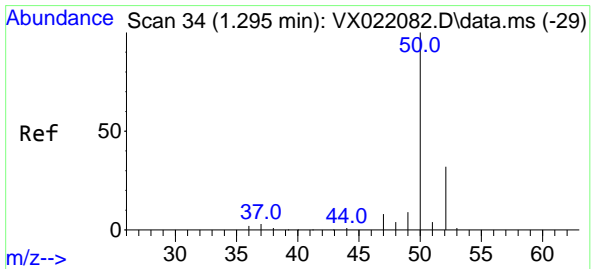
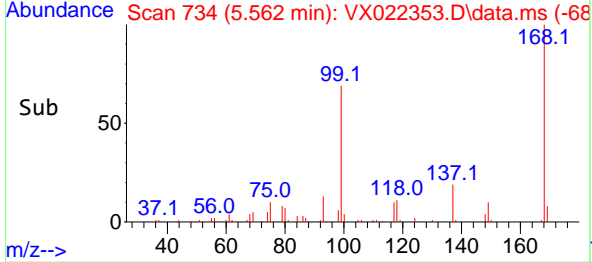
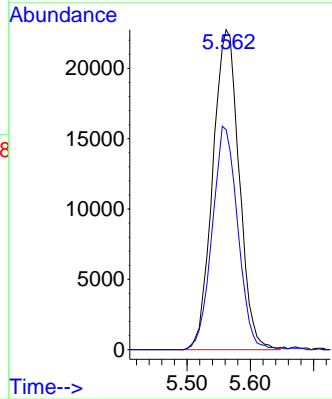


#1
 Pentafluorobenzene
 Concen: 50.00 ug/l
 RT: 5.562 min Scan# 734
 Delta R.T. -0.000 min
 Lab File: VX022353.D
 Acq: 03 Jun 2021 10:05

Instrument :
 MSVOA_X
 ClientSampled :

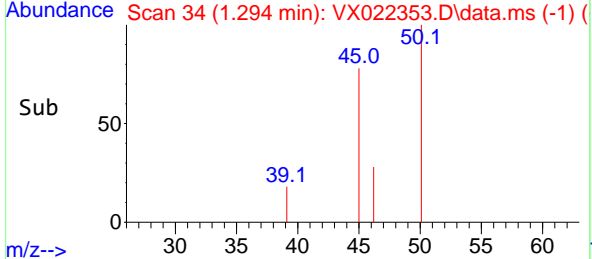
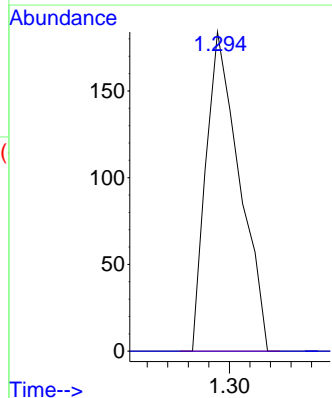
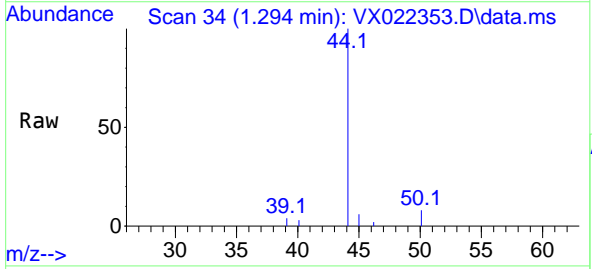


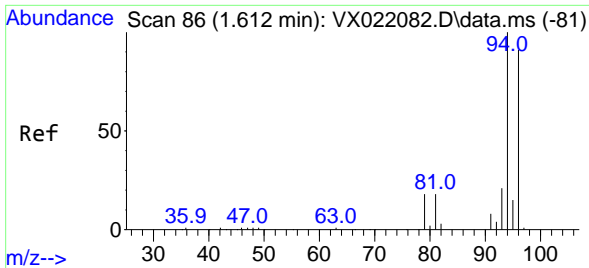
Tgt Ion:168 Resp: 65843
 Ion Ratio Lower Upper
 168 100
 99 68.7 45.8 68.6#



#3
 Chloromethane
 Concen: 0.24 ug/l
 RT: 1.294 min Scan# 34
 Delta R.T. -0.001 min
 Lab File: VX022353.D
 Acq: 03 Jun 2021 10:05

Tgt Ion: 50 Resp: 208
 Ion Ratio Lower Upper
 50 100
 52 0.0 26.4 39.6#

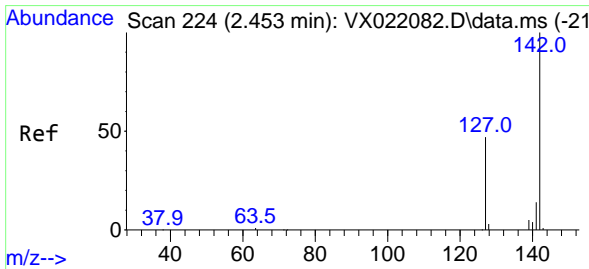
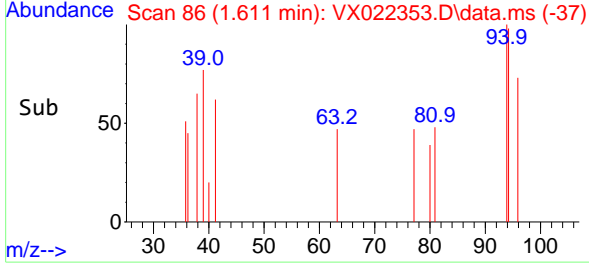
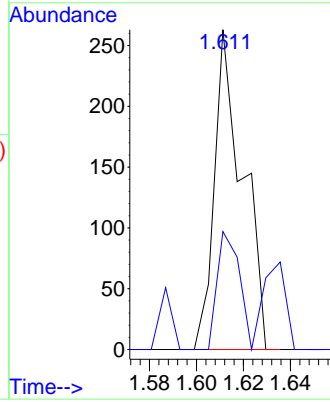
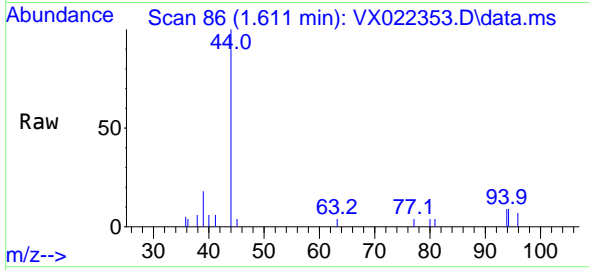




#5
 Bromomethane
 Concen: 0.41 ug/l
 RT: 1.611 min Scan# 86
 Delta R.T. -0.001 min
 Lab File: VX022353.D
 Acq: 03 Jun 2021 10:05

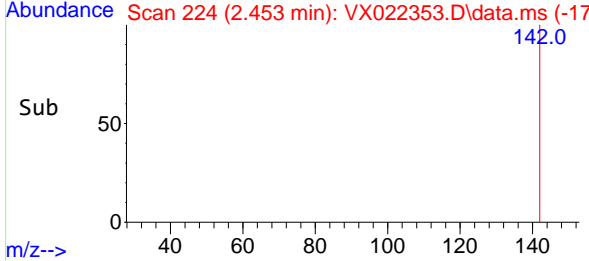
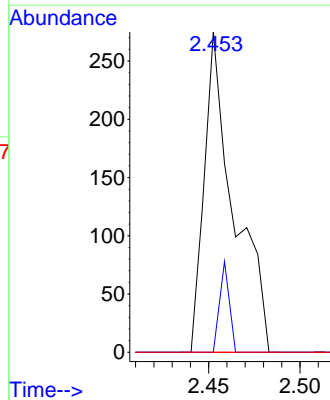
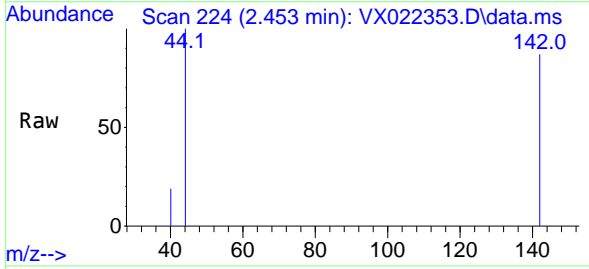
Instrument :
 MSVOA_X
 ClientSampled :

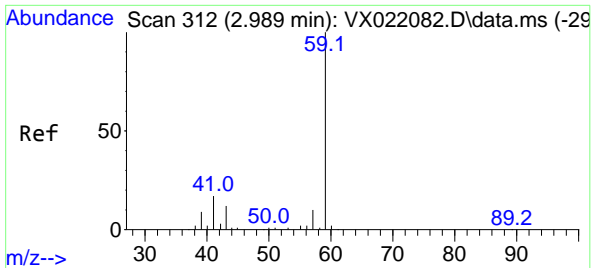
Tgt Ion: 94 Resp: 220
 Ion Ratio Lower Upper
 94 100
 96 36.9 76.4 114.6#



#10
 Methyl Iodide
 Concen: 0.37 ug/l
 RT: 2.453 min Scan# 224
 Delta R.T. -0.000 min
 Lab File: VX022353.D
 Acq: 03 Jun 2021 10:05

Tgt Ion:142 Resp: 311
 Ion Ratio Lower Upper
 142 100
 127 9.3 33.3 49.9#
 141 0.0 11.4 17.0#

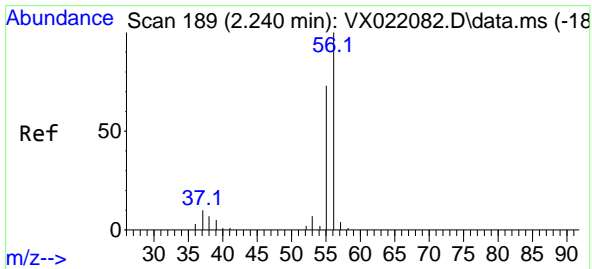
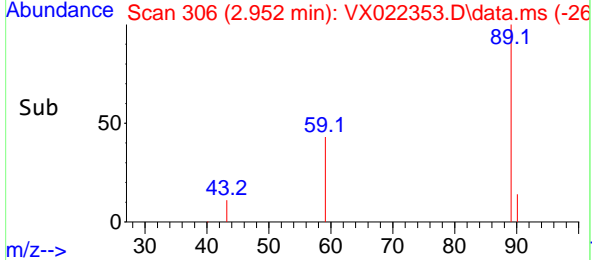
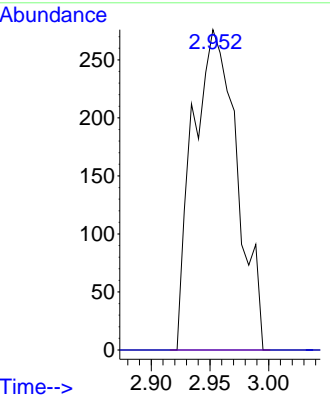
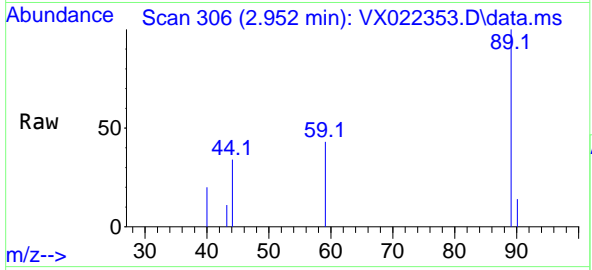




#11
 Tert butyl alcohol
 Concen: 3.10 ug/l
 RT: 2.952 min Scan# 306
 Delta R.T. -0.037 min
 Lab File: VX022353.D
 Acq: 03 Jun 2021 10:05

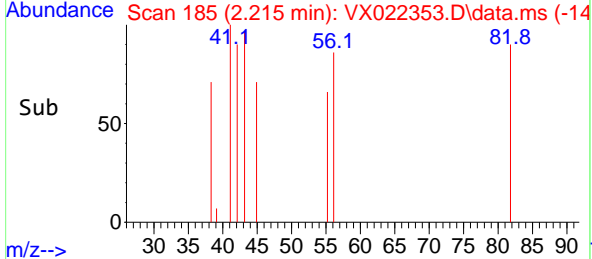
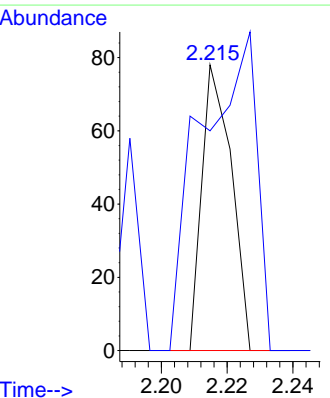
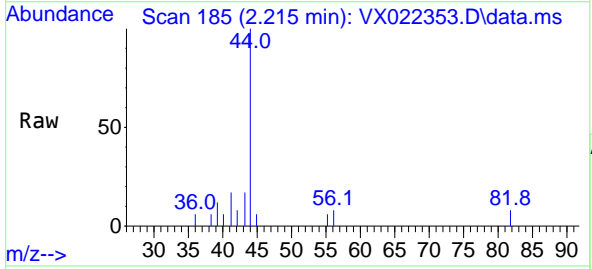
Instrument :
 MSVOA_X
 ClientSampled :

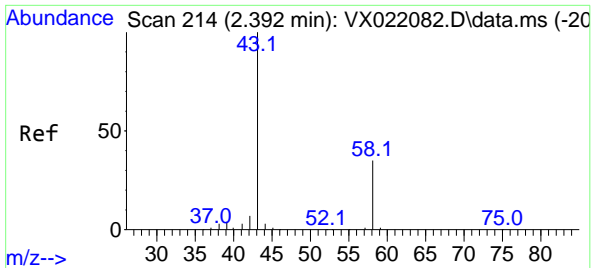
Tgt Ion: 59 Resp: 720
 Ion Ratio Lower Upper
 59 100
 57 0.0 7.8 11.8#



#13
 Acrolein
 Concen: 0.32 ug/l
 RT: 2.215 min Scan# 185
 Delta R.T. -0.025 min
 Lab File: VX022353.D
 Acq: 03 Jun 2021 10:05

Tgt Ion: 56 Resp: 49
 Ion Ratio Lower Upper
 56 100
 55 208.2 56.4 84.6#

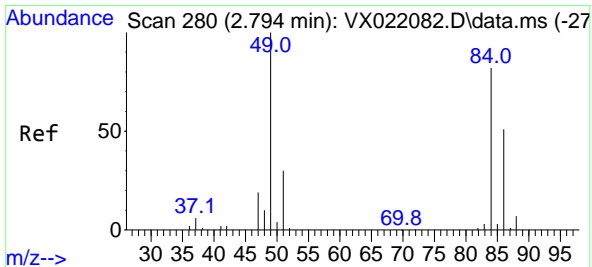
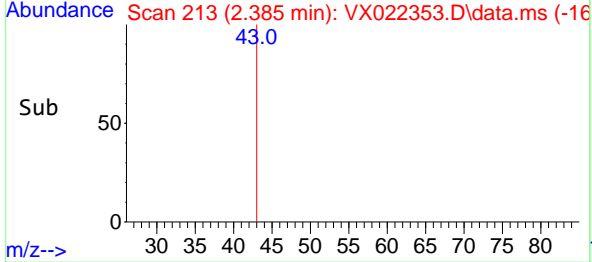
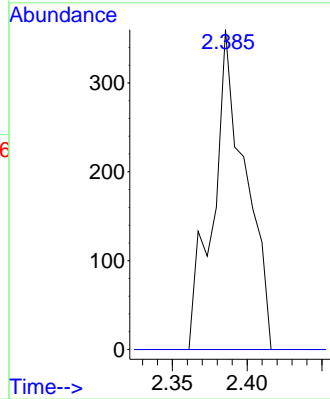
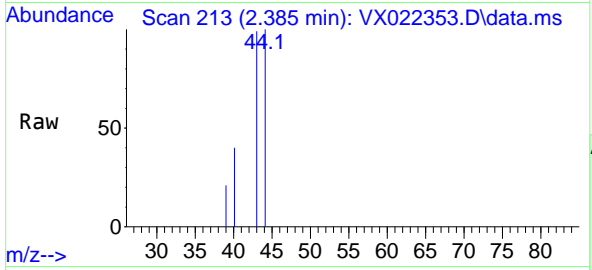




#16
 Acetone
 Concen: 1.23 ug/l
 RT: 2.385 min Scan# 213
 Delta R.T. -0.007 min
 Lab File: VX022353.D
 Acq: 03 Jun 2021 10:05

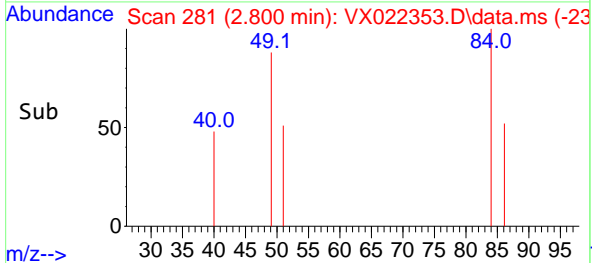
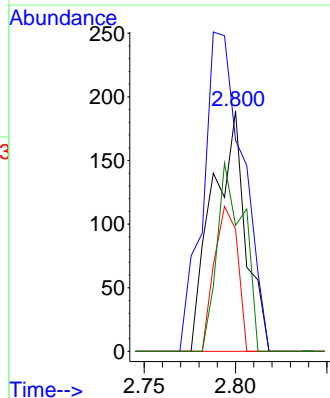
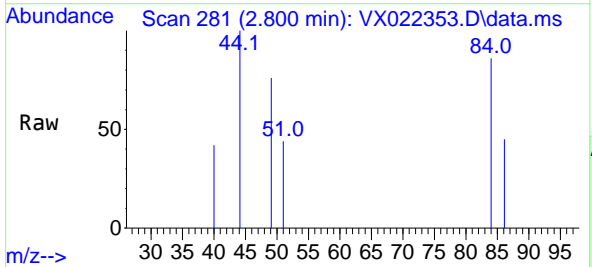
Instrument :
 MSVOA_X
 ClientSampled :

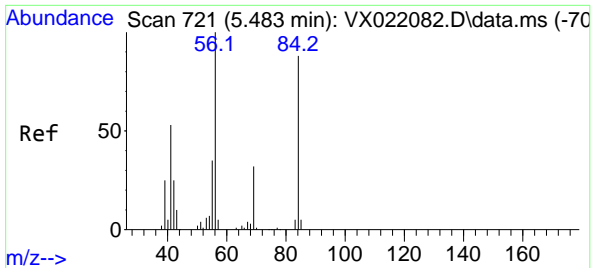
Tgt Ion: 43 Resp: 542
 Ion Ratio Lower Upper
 43 100
 58 0.0 27.8 41.8#



#20
 Methylene Chloride
 Concen: 0.24 ug/l
 RT: 2.800 min Scan# 281
 Delta R.T. 0.006 min
 Lab File: VX022353.D
 Acq: 03 Jun 2021 10:05

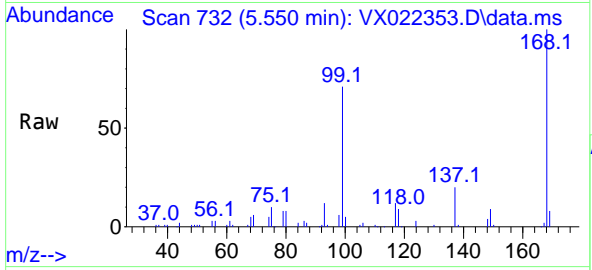
Tgt Ion: 84 Resp: 240
 Ion Ratio Lower Upper
 84 100
 49 87.8 88.6 132.8#
 51 50.8 27.0 40.6#
 86 52.4 50.3 75.5



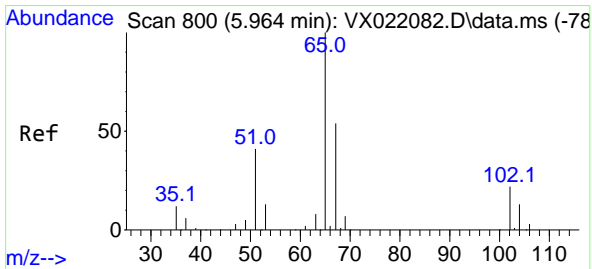
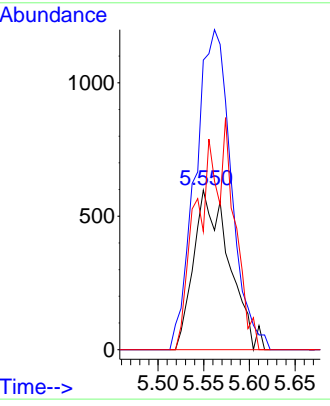
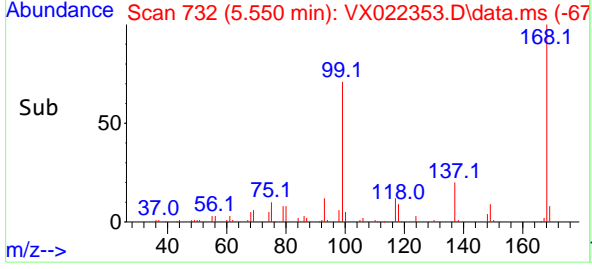


#31
 Cyclohexane
 Concen: 1.27 ug/l
 RT: 5.550 min Scan# 732
 Delta R.T. 0.067 min
 Lab File: VX022353.D
 Acq: 03 Jun 2021 10:05

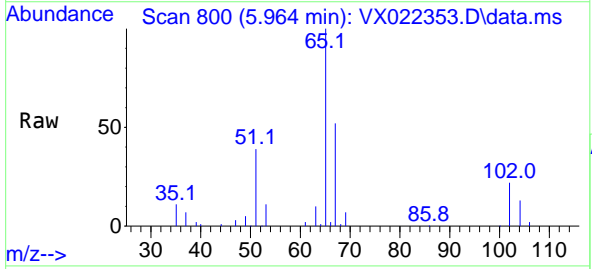
Instrument :
 MSVOA_X
 ClientSampled :



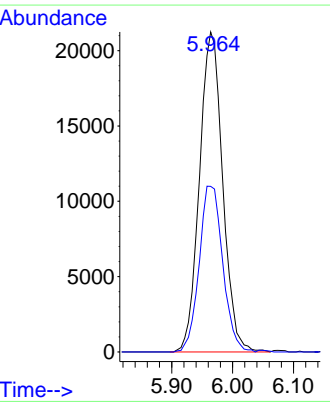
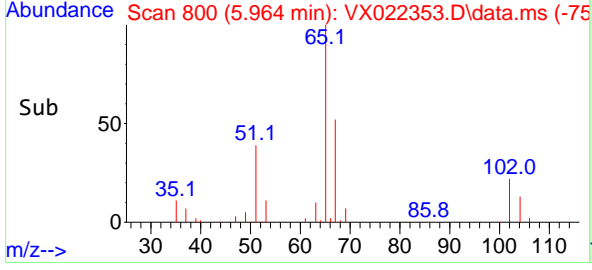
Tgt Ion: 56 Resp: 1617
 Ion Ratio Lower Upper
 56 100
 69 181.4 25.3 37.9#
 84 74.1 71.4 107.0

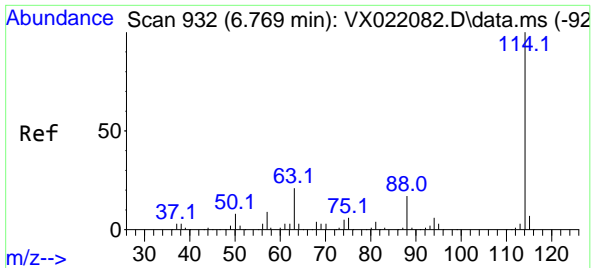


#33
 1,2-Dichloroethane-d4
 Concen: 55.35 ug/l
 RT: 5.964 min Scan# 800
 Delta R.T. 0.000 min
 Lab File: VX022353.D
 Acq: 03 Jun 2021 10:05



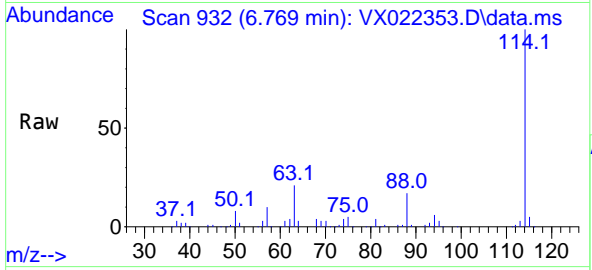
Tgt Ion: 65 Resp: 56219
 Ion Ratio Lower Upper
 65 100
 67 52.7 0.0 105.4



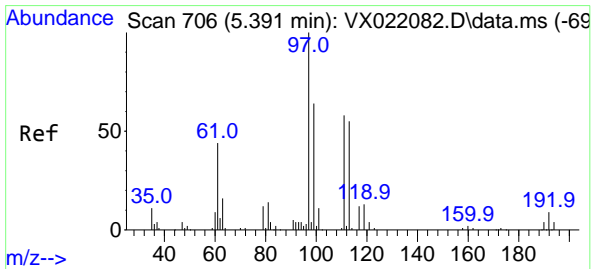
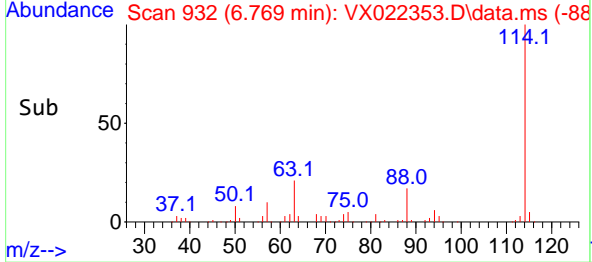
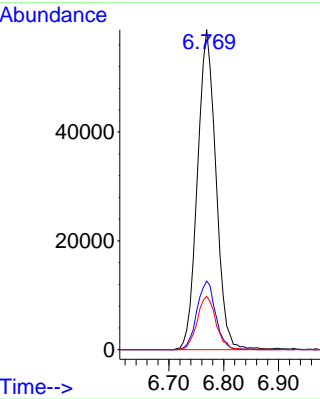


#34
 1,4-Difluorobenzene
 Concen: 50.00 ug/l
 RT: 6.769 min Scan# 932
 Delta R.T. -0.000 min
 Lab File: VX022353.D
 Acq: 03 Jun 2021 10:05

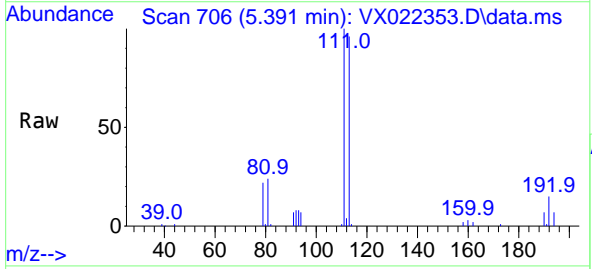
Instrument :
 MSVOA_X
 ClientSampled :



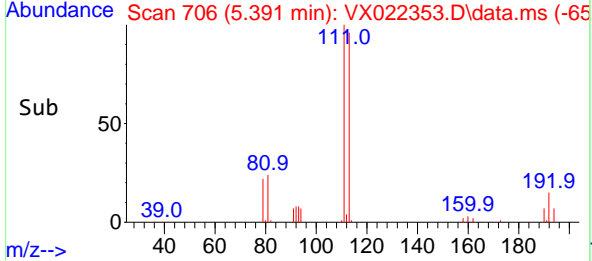
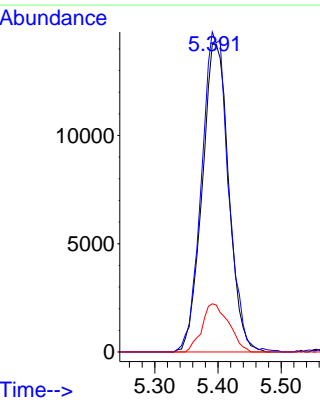
Tgt Ion:114 Resp: 137374
 Ion Ratio Lower Upper
 114 100
 63 21.4 0.0 40.8
 88 16.7 0.0 32.8

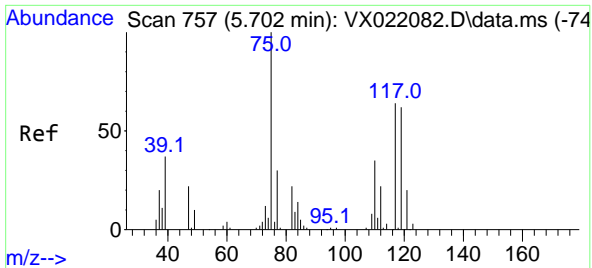


#35
 Dibromofluoromethane
 Concen: 47.56 ug/l
 RT: 5.391 min Scan# 706
 Delta R.T. 0.000 min
 Lab File: VX022353.D
 Acq: 03 Jun 2021 10:05



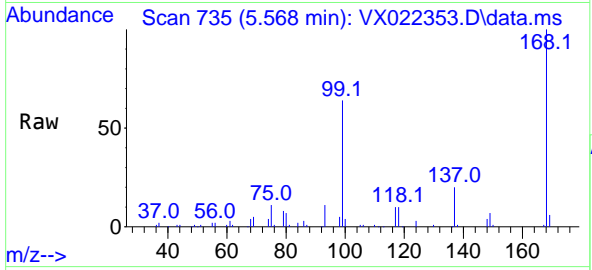
Tgt Ion:113 Resp: 41431
 Ion Ratio Lower Upper
 113 100
 111 105.1 81.9 122.9
 192 15.7 16.7 25.1#





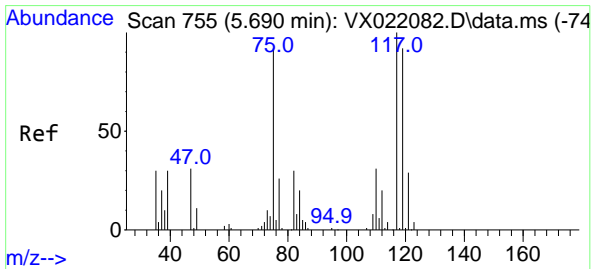
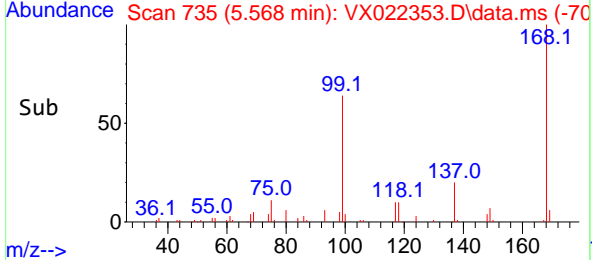
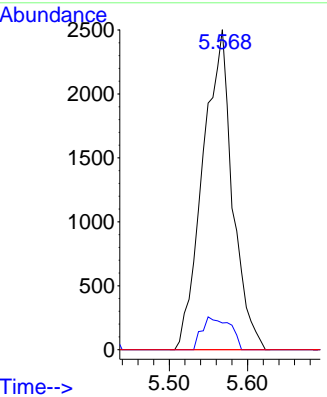
#36
 1,1-Dichloropropene
 Concen: 5.19 ug/l
 RT: 5.568 min Scan# 735
 Delta R.T. -0.134 min
 Lab File: VX022353.D
 Acq: 03 Jun 2021 10:05

Instrument : MSVOA_X
 ClientSampled :

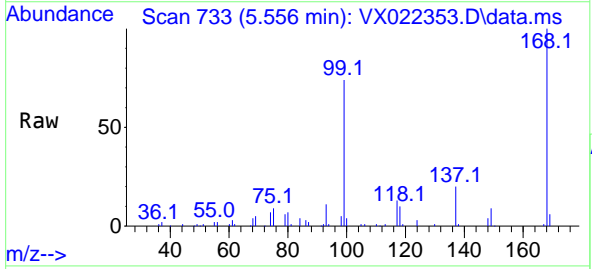


Tgt Ion: 75 Resp: 6594

Ion	Ratio	Lower	Upper
75	100		
110	9.6	18.1	54.4#
77	0.0	25.3	37.9#

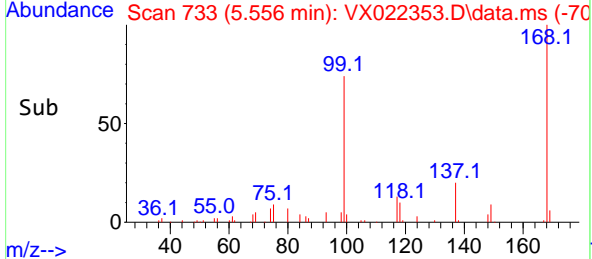
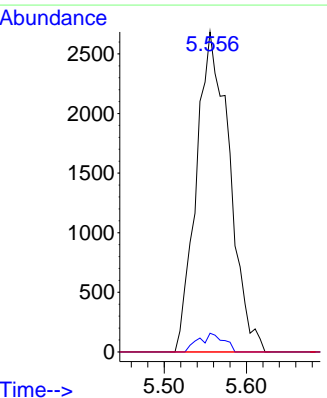


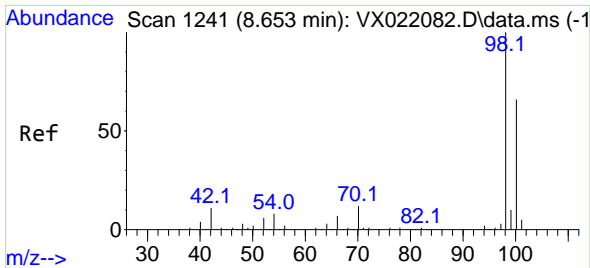
#38
 Carbon Tetrachloride
 Concen: 6.07 ug/l
 RT: 5.556 min Scan# 733
 Delta R.T. -0.134 min
 Lab File: VX022353.D
 Acq: 03 Jun 2021 10:05



Tgt Ion: 117 Resp: 7544

Ion	Ratio	Lower	Upper
117	100		
119	5.8	76.2	114.2#
121	0.0	24.8	37.2#

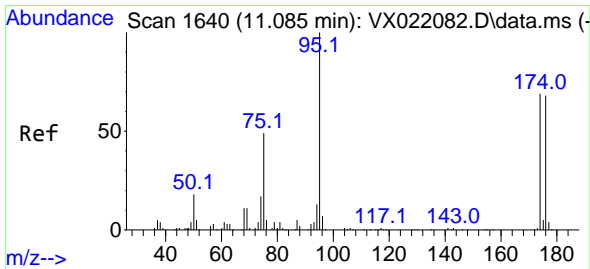
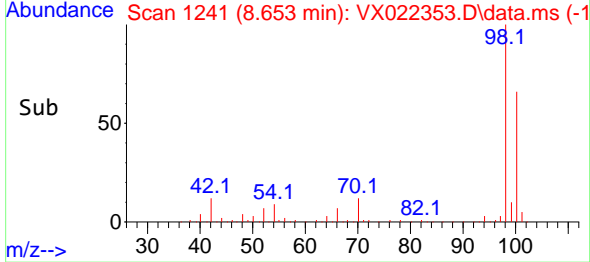
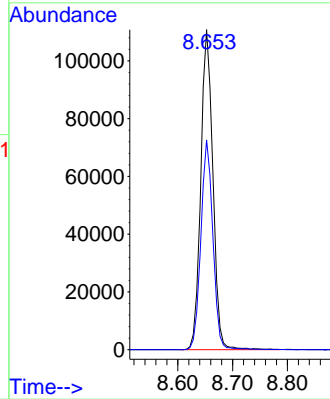
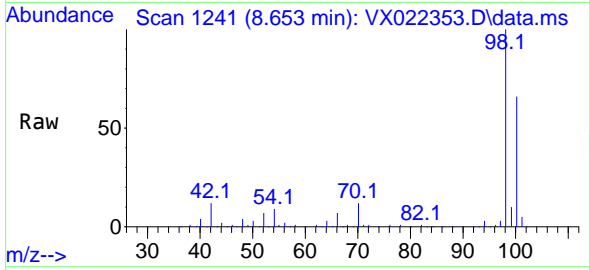




#50
 Toluene-d8
 Concen: 50.73 ug/l
 RT: 8.653 min Scan# 1241
 Delta R.T. -0.000 min
 Lab File: VX022353.D
 Acq: 03 Jun 2021 10:05

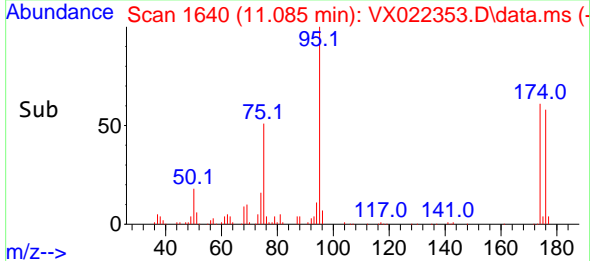
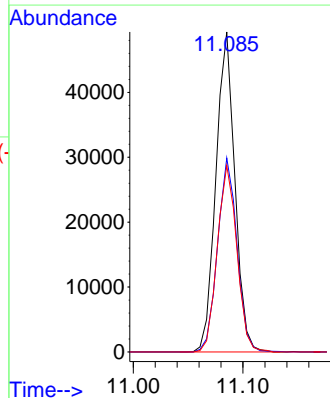
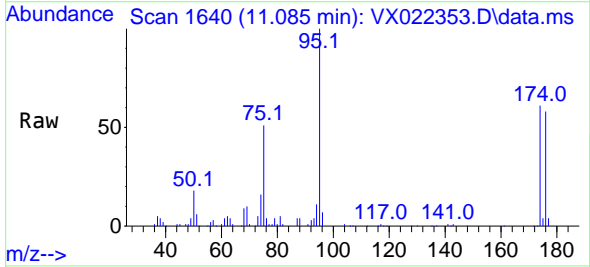
Instrument :
 MSVOA_X
 ClientSampled :

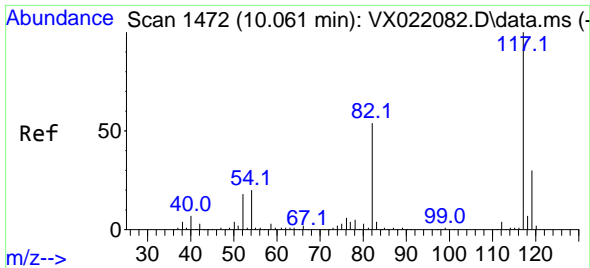
Tgt Ion: 98 Resp: 170239
 Ion Ratio Lower Upper
 98 100
 100 65.0 51.9 77.9



#62
 4-Bromofluorobenzene
 Concen: 47.82 ug/l
 RT: 11.085 min Scan# 1640
 Delta R.T. 0.000 min
 Lab File: VX022353.D
 Acq: 03 Jun 2021 10:05

Tgt Ion: 95 Resp: 59315
 Ion Ratio Lower Upper
 95 100
 174 62.1 0.0 154.6
 176 60.1 0.0 155.8

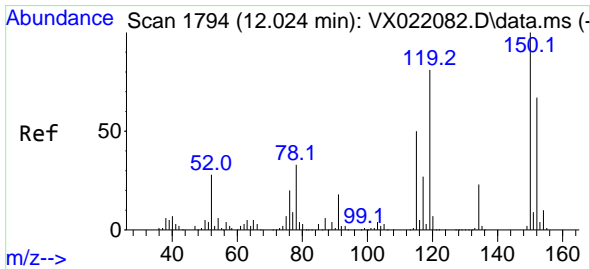
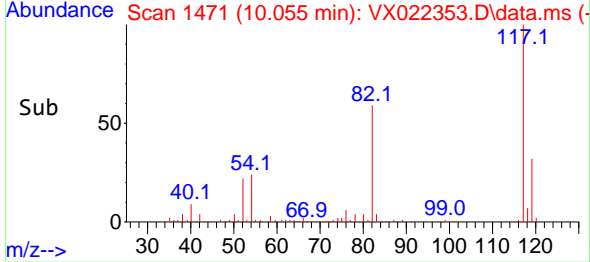
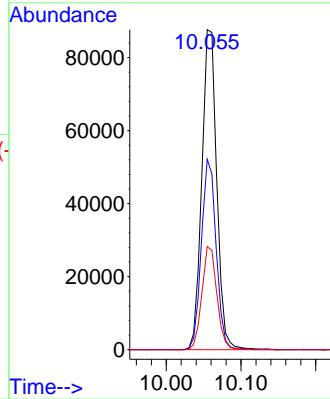
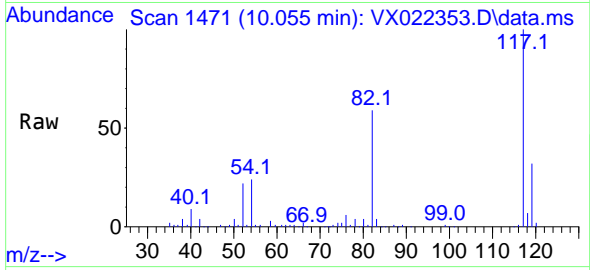




#63
 Chlorobenzene-d5
 Concen: 50.00 ug/l
 RT: 10.055 min Scan# 1471
 Delta R.T. -0.006 min
 Lab File: VX022353.D
 Acq: 03 Jun 2021 10:05

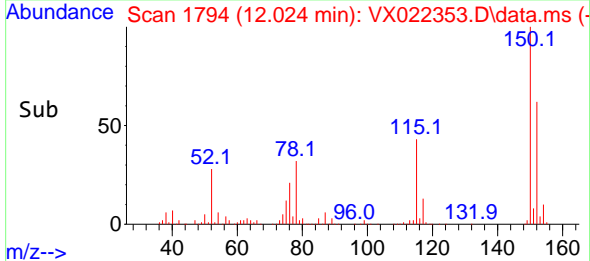
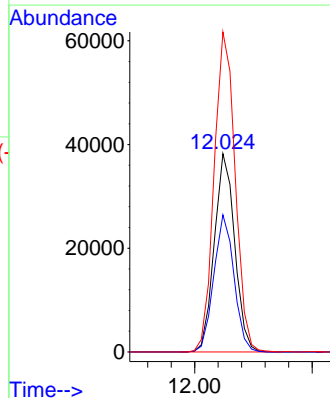
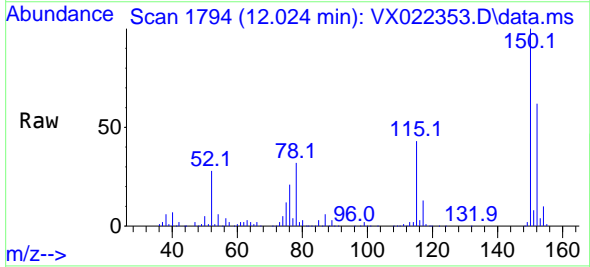
Instrument :
 MSVOA_X
 ClientSampled :

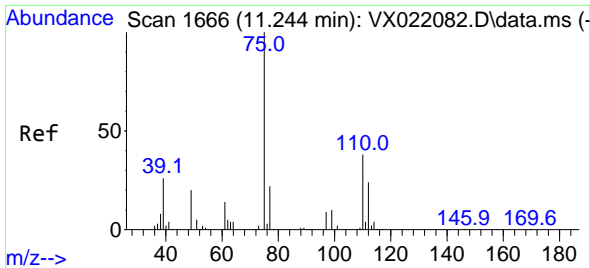
Tgt Ion:117 Resp: 121606
 Ion Ratio Lower Upper
 117 100
 82 59.5 47.4 71.2
 119 32.2 26.6 39.8



#72
 1,4-Dichlorobenzene-d4
 Concen: 50.00 ug/l
 RT: 12.024 min Scan# 1794
 Delta R.T. -0.000 min
 Lab File: VX022353.D
 Acq: 03 Jun 2021 10:05

Tgt Ion:152 Resp: 46219
 Ion Ratio Lower Upper
 152 100
 115 68.4 41.1 123.3
 150 165.9 0.0 349.0

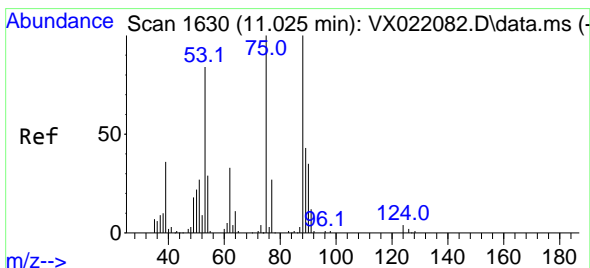
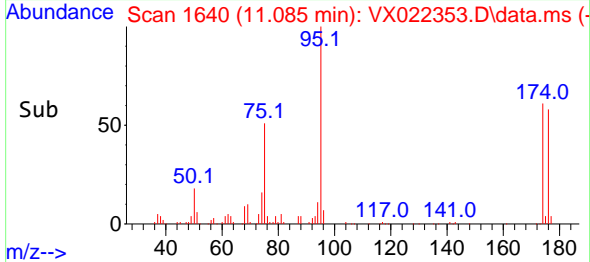
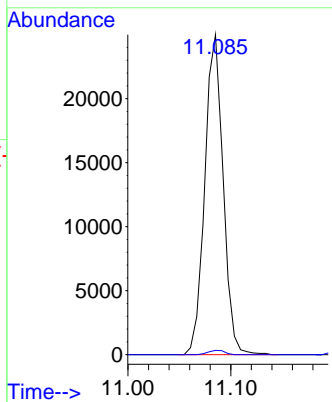
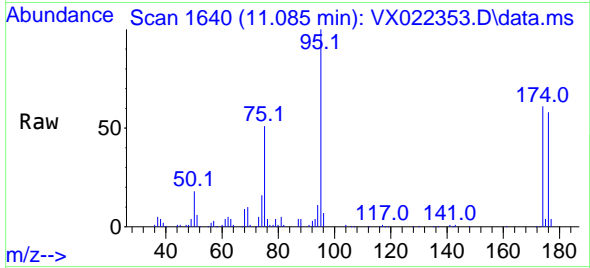




#76
 1,2,3-Trichloropropane
 Concen: 27.23 ug/l
 RT: 11.085 min Scan# 1640
 Delta R.T. -0.159 min
 Lab File: VX022353.D
 Acq: 03 Jun 2021 10:05

Instrument :
 MSVOA_X
 ClientSampled :

Tgt Ion: 75 Resp: 31047
 Ion Ratio Lower Upper
 75 100
 77 1.2 19.1 57.5#



#81
 trans-1,4-Dichloro-2-butene
 Concen: 64.51 ug/l
 RT: 11.085 min Scan# 1640
 Delta R.T. 0.060 min
 Lab File: VX022353.D
 Acq: 03 Jun 2021 10:05

Tgt Ion: 75 Resp: 31047
 Ion Ratio Lower Upper
 75 100
 53 0.0 74.5 111.7#
 89 0.0 37.9 56.9#

