

Data Path : Z:\voasrv\HPCHEM1\MSVOA_X\Data\VX060322\
 Data File : VX029199.D
 Acq On : 03 Jun 2022 18:45
 Operator : JC/MD
 Sample : N3164-14
 Misc : 5.0mL/MSVOA_X/WATER
 ALS Vial : 20 Sample Multiplier: 1

Instrument :
 MSVOA_X
 ClientSampleId :
 37S-20220531

Quant Time: Jun 06 02:36:41 2022
 Quant Method : Z:\voasrv\HPCHEM1\MSVOA_X\Method\82X053122W.M
 Quant Title : SW846 8260
 QLast Update : Wed Jun 01 04:45:42 2022
 Response via : Initial Calibration

Compound	R.T.	QIon	Response	Conc	Units	Dev(Min)

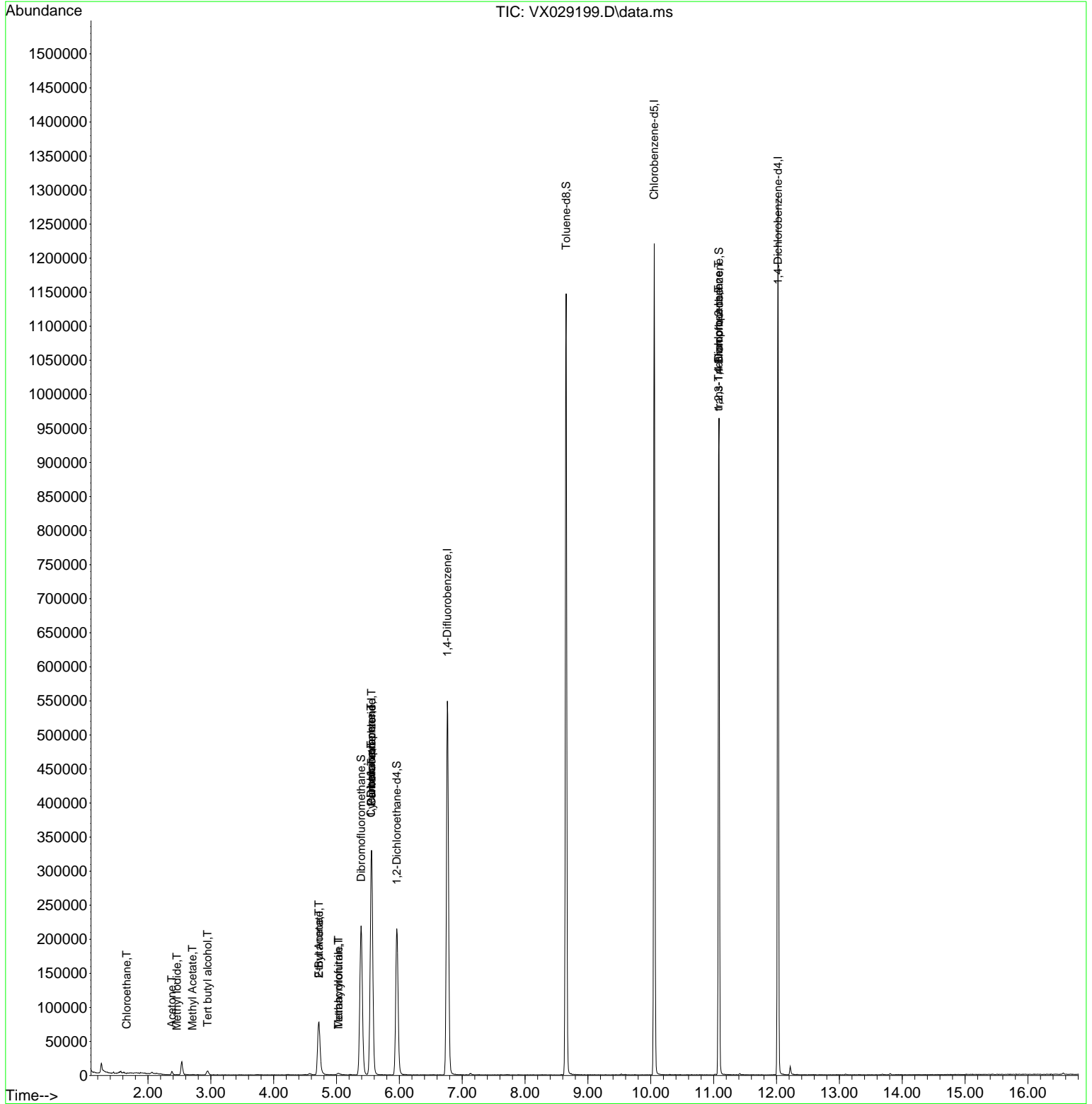
Internal Standards						
1) Pentafluorobenzene	5.556	168	310044	50.000	ug/l	0.00
34) 1,4-Difluorobenzene	6.763	114	583619	50.000	ug/l	0.00
63) Chlorobenzene-d5	10.055	117	571929	50.000	ug/l	0.00
72) 1,4-Dichlorobenzene-d4	12.024	152	267120	50.000	ug/l	0.00
System Monitoring Compounds						
33) 1,2-Dichloroethane-d4	5.958	65	209609	59.954	ug/l	0.00
Spiked Amount	50.000	Range	61 - 141	Recovery	=	119.900%
35) Dibromofluoromethane	5.391	113	194563	50.190	ug/l	0.00
Spiked Amount	50.000	Range	69 - 133	Recovery	=	100.380%
50) Toluene-d8	8.653	98	694324	48.972	ug/l	0.00
Spiked Amount	50.000	Range	65 - 126	Recovery	=	97.940%
62) 4-Bromofluorobenzene	11.085	95	278306	50.780	ug/l	0.00
Spiked Amount	50.000	Range	58 - 135	Recovery	=	101.560%
Target Compounds						
					Qvalue	
5) Bromomethane	1.611	94	627	Below Cal	#	23
6) Chloroethane	1.660	64	408	1.551	ug/l #	43
10) Methyl Iodide	2.459	142	297	4.305	ug/l #	77
11) Tert butyl alcohol	2.946	59	4096	5.057	ug/l #	72
16) Acetone	2.379	43	5088	3.696	ug/l	95
18) Methyl Acetate	2.709	43	1042	0.293	ug/l #	54
25) 2-Butanone	4.721	43	132571	59.695	ug/l #	44
29) Tetrahydrofuran	5.031	42	2364	1.660	ug/l #	69
31) Cyclohexane	5.550	56	5911	1.300	ug/l #	1
36) 1,1-Dichloropropene	5.550	75	23469	4.705	ug/l #	45
37) Ethyl Acetate	4.721	43	132739	27.459	ug/l	99
38) Carbon Tetrachloride	5.556	117	32866	5.766	ug/l #	15
41) Methacrylonitrile	5.031	41	1395	0.534	ug/l #	35
44) Trichloroethene	7.129	130	919	Below Cal		94
76) 1,2,3-Trichloropropane	11.079	75	131960	24.369	ug/l #	38
81) trans-1,4-Dichloro-2-b...	11.079	75	131960	71.495	ug/l #	15

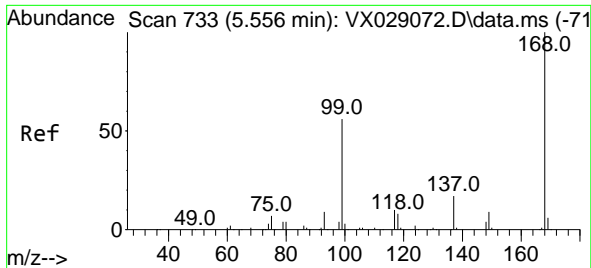
(#) = qualifier out of range (m) = manual integration (+) = signals summed

Data Path : Z:\voasrv\HPCHEM1\MSVOA_X\Data\VX060322\
 Data File : VX029199.D
 Acq On : 03 Jun 2022 18:45
 Operator : JC/MD
 Sample : N3164-14
 Misc : 5.0mL/MSVOA_X/WATER
 ALS Vial : 20 Sample Multiplier: 1

Instrument :
 MSVOA_X
ClientSampleId :
 37S-20220531

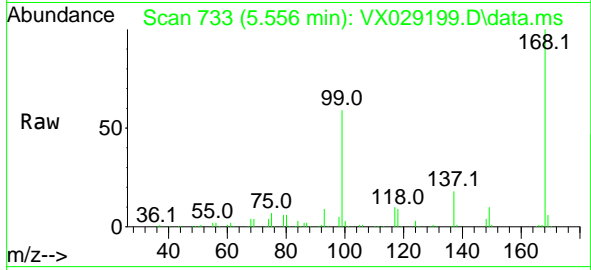
Quant Time: Jun 06 02:36:41 2022
 Quant Method : Z:\voasrv\HPCHEM1\MSVOA_X\Method\82X053122W.M
 Quant Title : SW846 8260
 QLast Update : Wed Jun 01 04:45:42 2022
 Response via : Initial Calibration



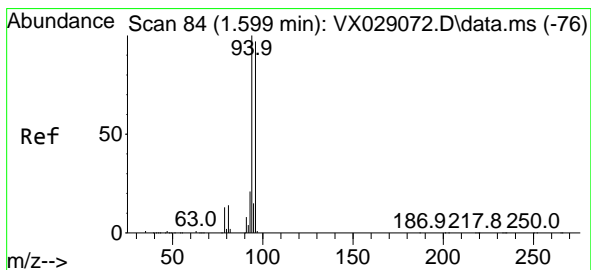
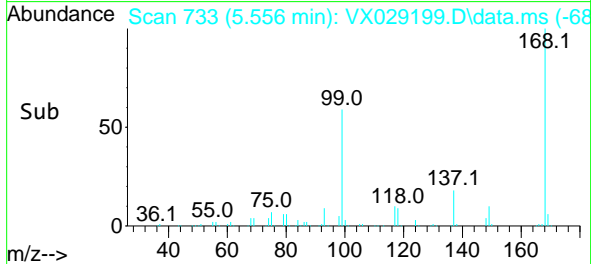
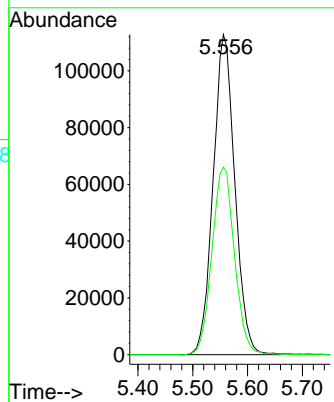


#1
 Pentafluorobenzene
 Concen: 50.000 ug/l
 RT: 5.556 min Scan# 71
 Delta R.T. -0.000 min
 Lab File: VX029199.D
 Acq: 03 Jun 2022 18:45

Instrument : MSVOA_X
 ClientSampleId : 37S-20220531

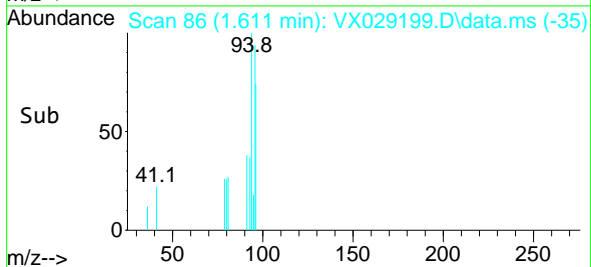
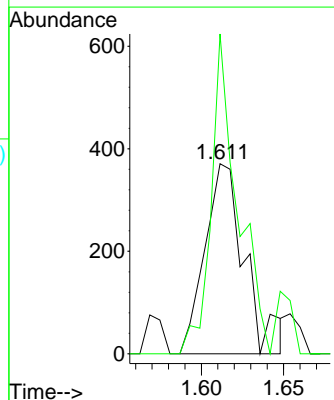
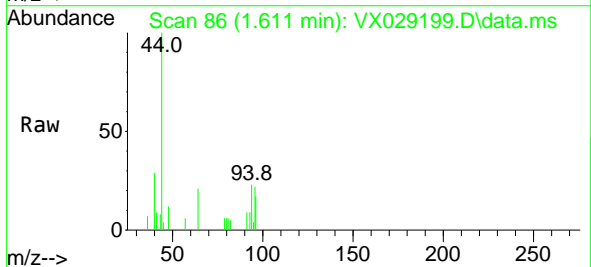


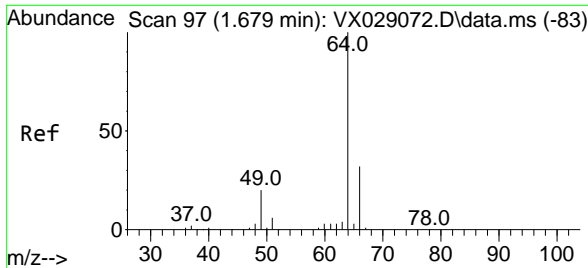
Tgt Ion:168 Resp: 310044
 Ion Ratio Lower Upper
 168 100
 99 58.6 41.7 62.5



#5
 Bromomethane
 Concen: Below Cal
 RT: 1.611 min Scan# 86
 Delta R.T. 0.012 min
 Lab File: VX029199.D
 Acq: 03 Jun 2022 18:45

Tgt Ion: 94 Resp: 627
 Ion Ratio Lower Upper
 94 100
 96 168.2 75.3 112.9#

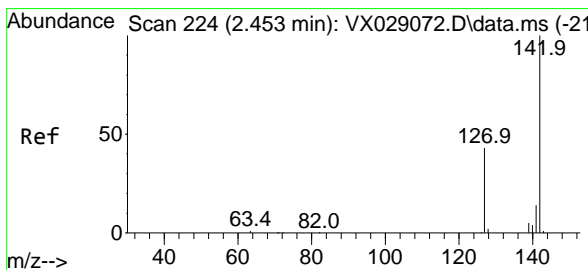
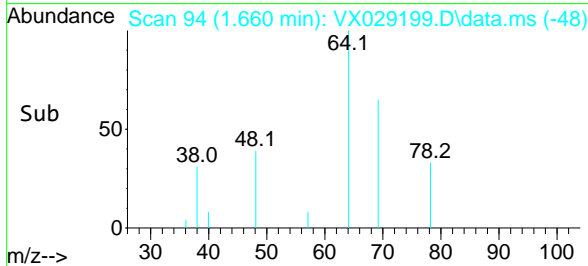
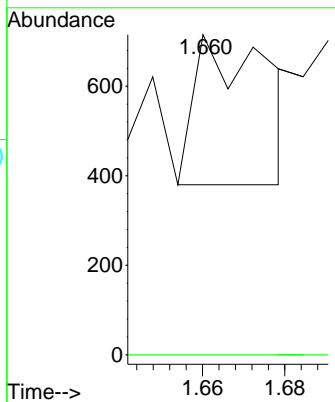
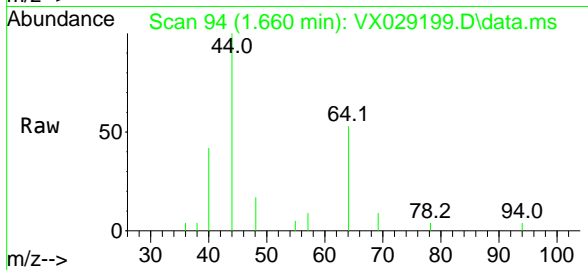




#6
 Chloroethane
 Concen: 1.551 ug/l
 RT: 1.660 min Scan# 94
 Delta R.T. -0.019 min
 Lab File: VX029199.D
 Acq: 03 Jun 2022 18:45

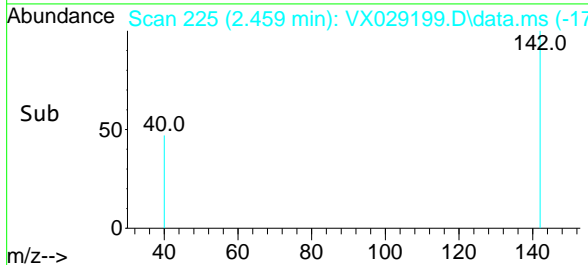
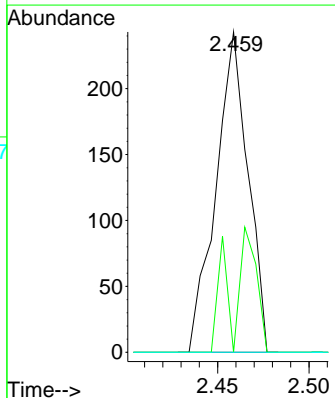
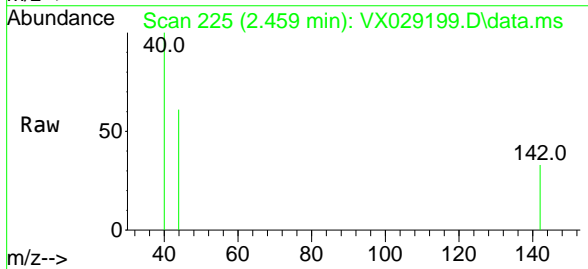
Instrument :
 MSVOA_X
 ClientSampleId :
 37S-20220531

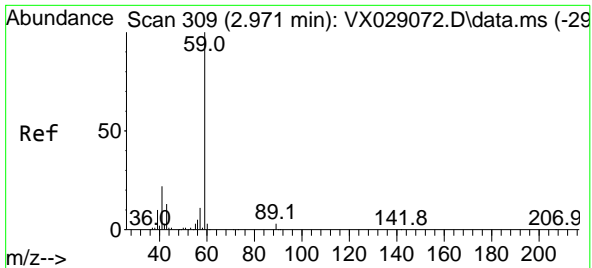
Tgt Ion: 64 Resp: 408
 Ion Ratio Lower Upper
 64 100
 66 0.0 25.3 37.9#



#10
 Methyl Iodide
 Concen: 4.305 ug/l
 RT: 2.459 min Scan# 225
 Delta R.T. 0.006 min
 Lab File: VX029199.D
 Acq: 03 Jun 2022 18:45

Tgt Ion: 142 Resp: 297
 Ion Ratio Lower Upper
 142 100
 127 30.6 33.9 50.9#
 141 0.0 11.4 17.2#

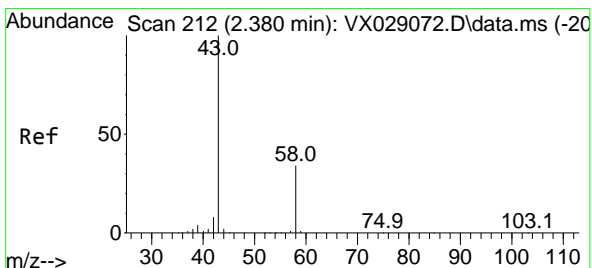
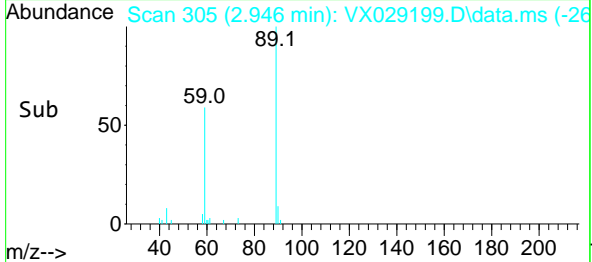
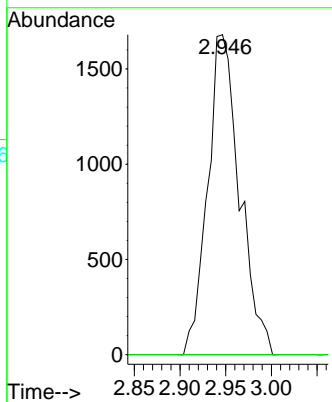
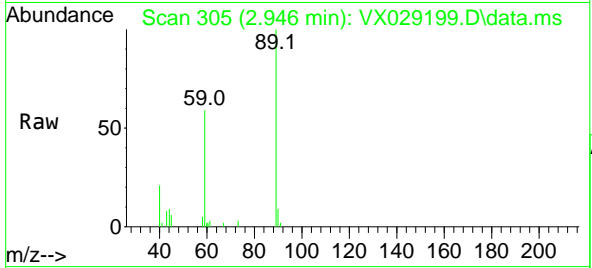




#11
 Tert butyl alcohol
 Concen: 5.057 ug/l
 RT: 2.946 min Scan# 305
 Delta R.T. -0.025 min
 Lab File: VX029199.D
 Acq: 03 Jun 2022 18:45

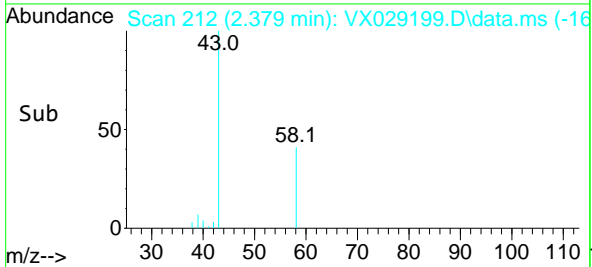
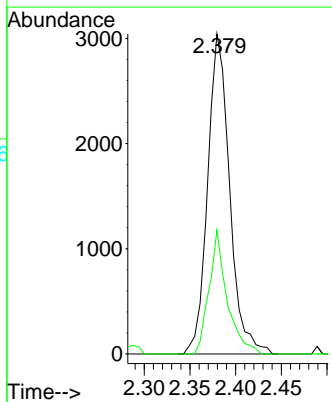
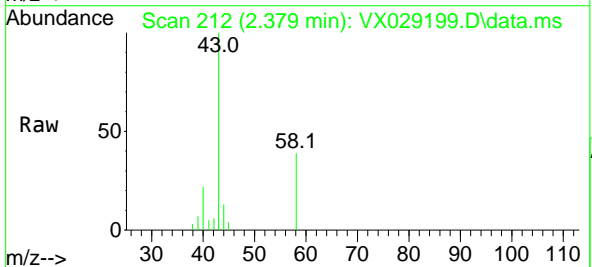
Instrument : MSVOA_X
 ClientSampleId : 37S-20220531

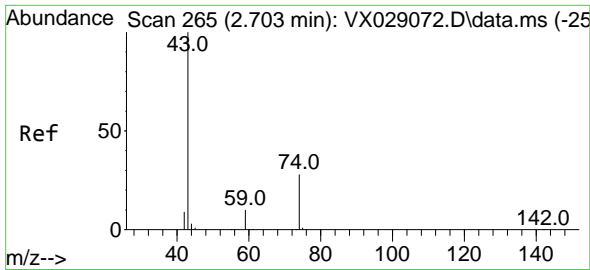
Tgt Ion: 59 Resp: 4096
 Ion Ratio Lower Upper
 59 100
 57 0.0 8.3 12.5#



#16
 Acetone
 Concen: 3.696 ug/l
 RT: 2.379 min Scan# 212
 Delta R.T. -0.001 min
 Lab File: VX029199.D
 Acq: 03 Jun 2022 18:45

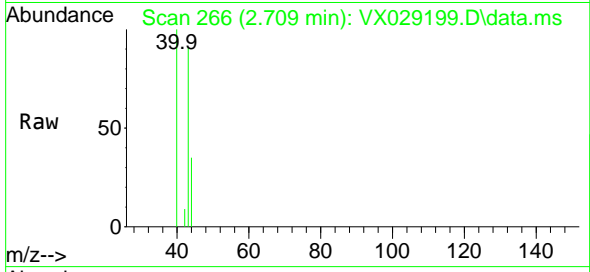
Tgt Ion: 43 Resp: 5088
 Ion Ratio Lower Upper
 43 100
 58 38.7 28.8 43.2



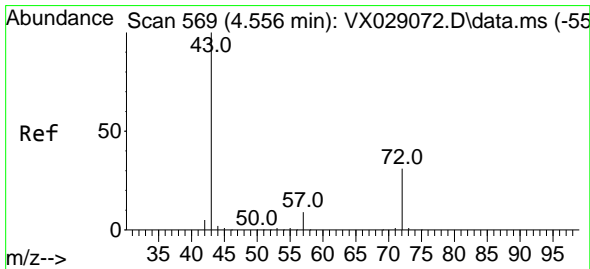
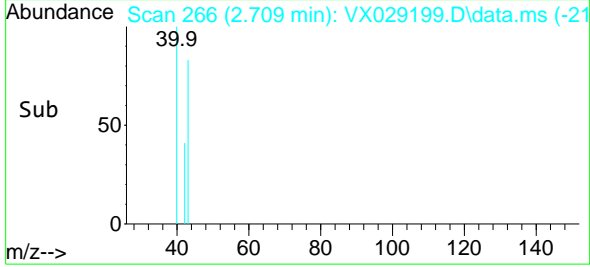
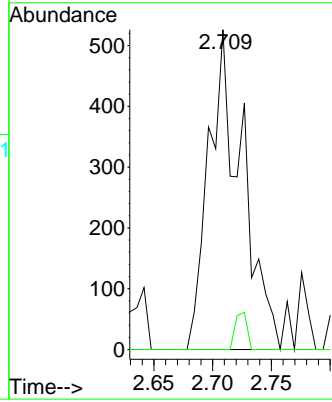


#18
 Methyl Acetate
 Concen: 0.293 ug/l
 RT: 2.709 min Scan# 20
 Delta R.T. 0.006 min
 Lab File: VX029199.D
 Acq: 03 Jun 2022 18:45

Instrument :
 MSVOA_X
 ClientSampleId :
 37S-20220531

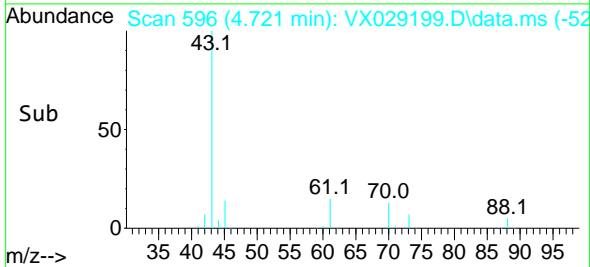
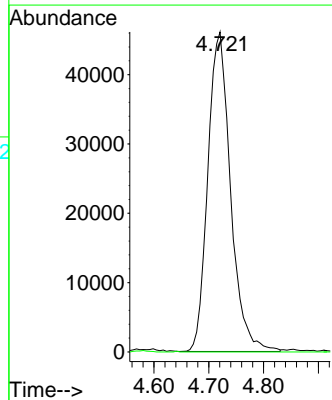
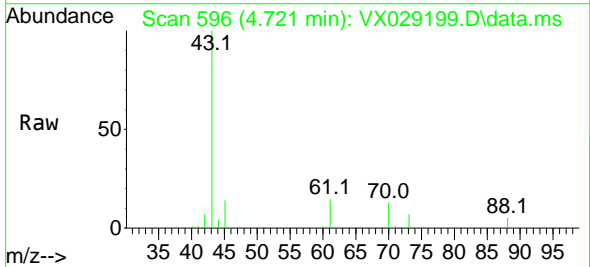


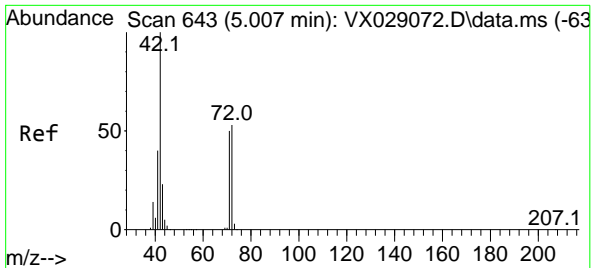
Tgt Ion: 43 Resp: 1042
 Ion Ratio Lower Upper
 43 100
 74 4.1 22.8 34.2#



#25
 2-Butanone
 Concen: 59.695 ug/l
 RT: 4.721 min Scan# 596
 Delta R.T. 0.165 min
 Lab File: VX029199.D
 Acq: 03 Jun 2022 18:45

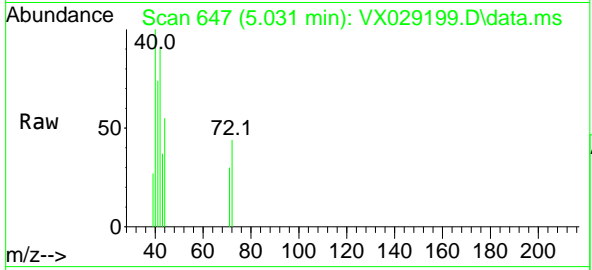
Tgt Ion: 43 Resp: 132571
 Ion Ratio Lower Upper
 43 100
 72 0.0 24.4 36.6#





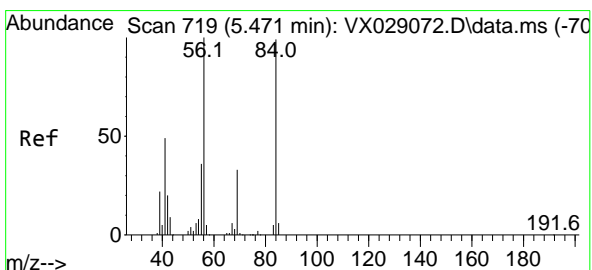
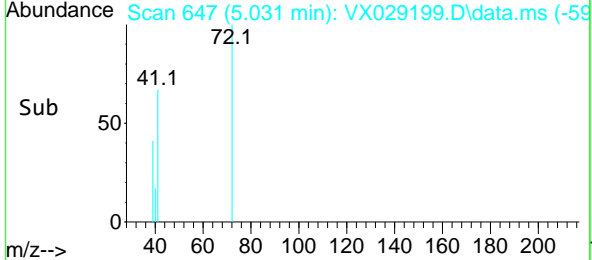
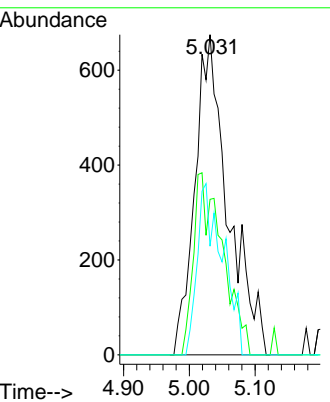
#29
 Tetrahydrofuran
 Concen: 1.660 ug/l
 RT: 5.031 min Scan# 64
 Delta R.T. 0.024 min
 Lab File: VX029199.D
 Acq: 03 Jun 2022 18:45

Instrument : MSVOA_X
 ClientSampleId : 37S-20220531

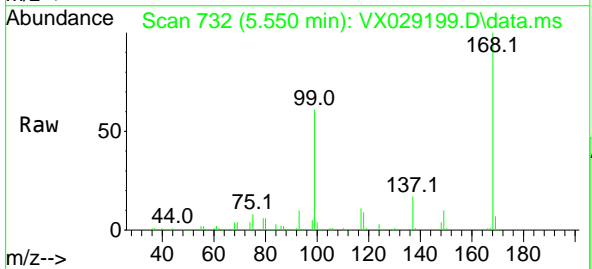


Tgt Ion: 42 Resp: 2364

Ion	Ratio	Lower	Upper
42	100		
72	21.9	44.1	66.1#
71	41.0	40.5	60.7

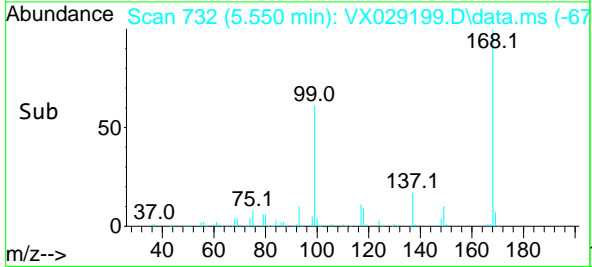
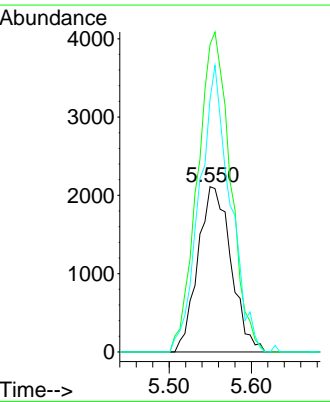


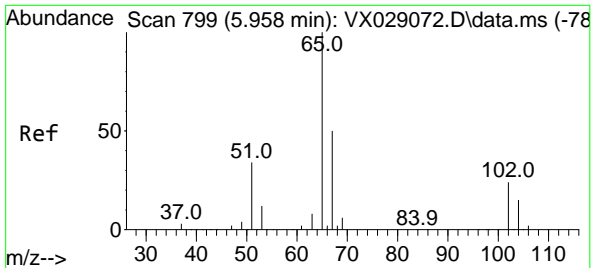
#31
 Cyclohexane
 Concen: 1.300 ug/l
 RT: 5.550 min Scan# 732
 Delta R.T. 0.079 min
 Lab File: VX029199.D
 Acq: 03 Jun 2022 18:45



Tgt Ion: 56 Resp: 5911

Ion	Ratio	Lower	Upper
56	100		
69	186.0	26.7	40.1#
84	152.8	77.2	115.8#

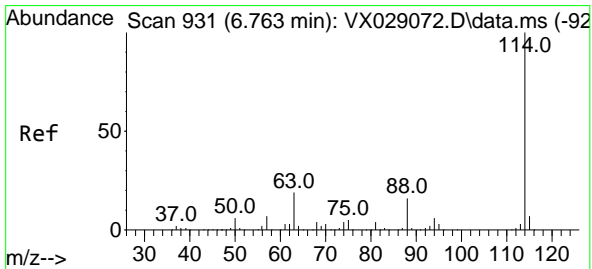
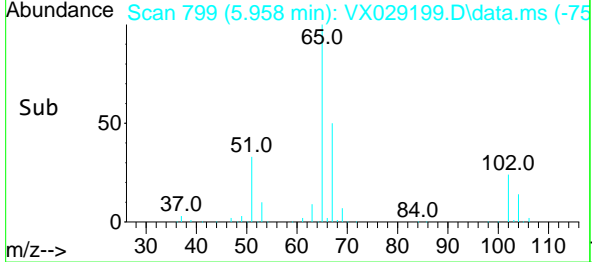
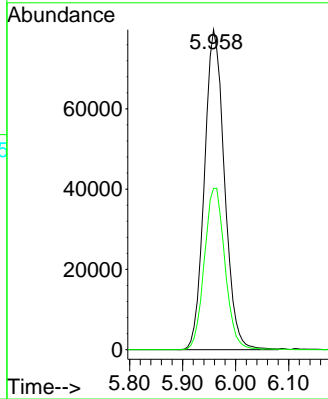
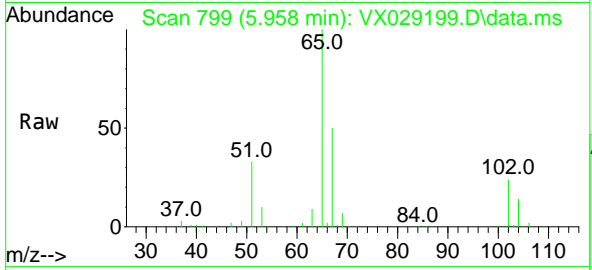




#33
 1,2-Dichloroethane-d4
 Concen: 59.954 ug/l
 RT: 5.958 min Scan# 799
 Delta R.T. 0.000 min
 Lab File: VX029199.D
 Acq: 03 Jun 2022 18:45

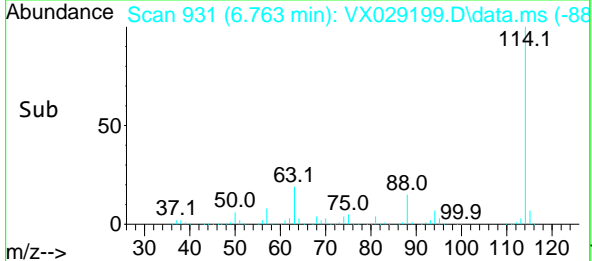
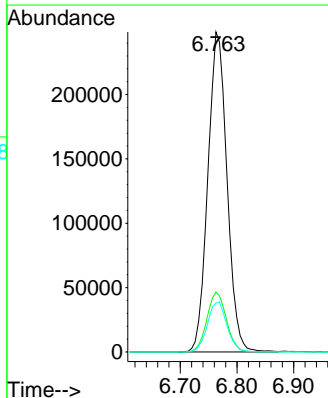
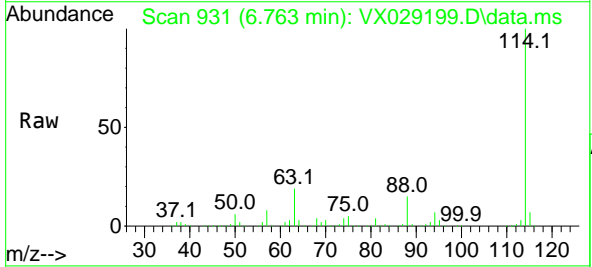
Instrument : MSVOA_X
 ClientSampleId : 37S-20220531

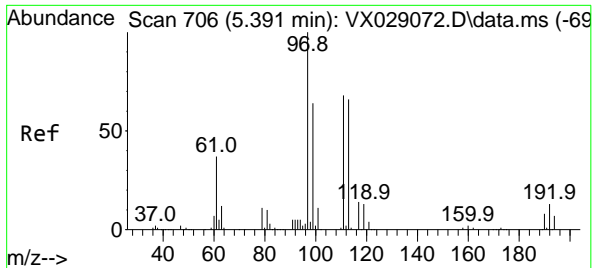
Tgt Ion: 65 Resp: 209609
 Ion Ratio Lower Upper
 65 100
 67 51.8 0.0 107.4



#34
 1,4-Difluorobenzene
 Concen: 50.000 ug/l
 RT: 6.763 min Scan# 931
 Delta R.T. -0.000 min
 Lab File: VX029199.D
 Acq: 03 Jun 2022 18:45

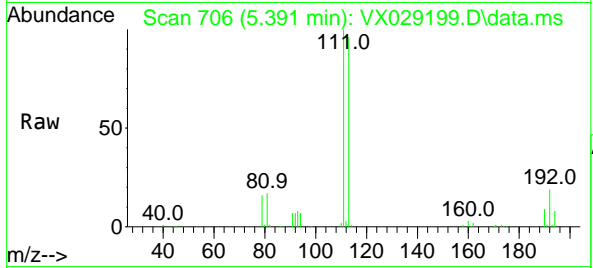
Tgt Ion: 114 Resp: 583619
 Ion Ratio Lower Upper
 114 100
 63 18.7 0.0 36.8
 88 15.3 0.0 32.4





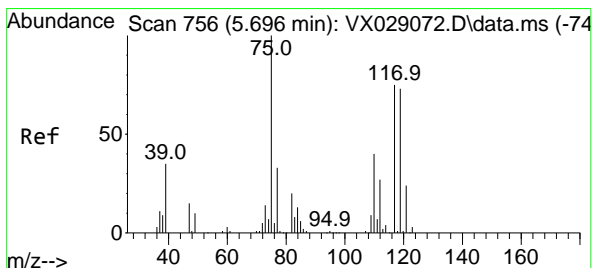
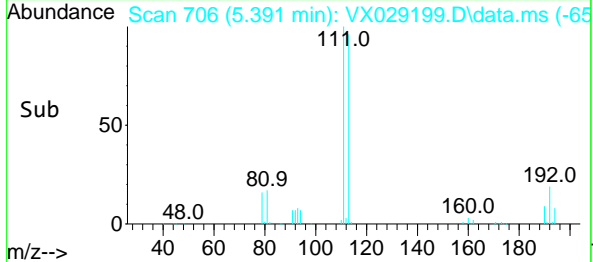
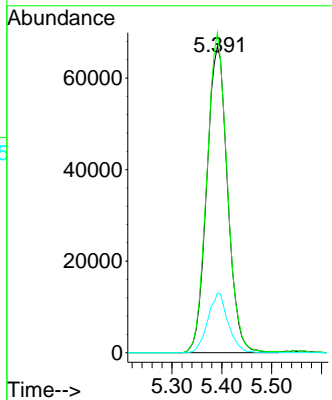
#35
 Dibromofluoromethane
 Concen: 50.190 ug/l
 RT: 5.391 min Scan# 706
 Delta R.T. 0.000 min
 Lab File: VX029199.D
 Acq: 03 Jun 2022 18:45

Instrument : MSVOA_X
 ClientSampleId : 37S-20220531



Tgt Ion: 113 Resp: 194563

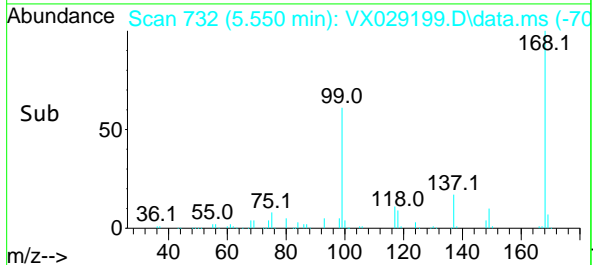
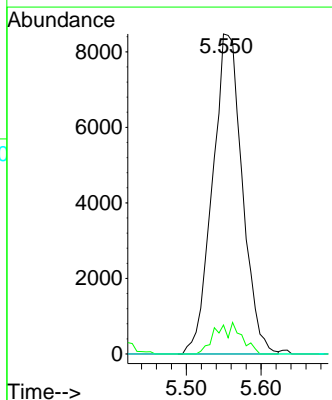
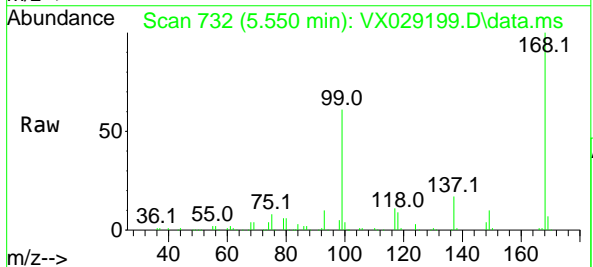
Ion	Ratio	Lower	Upper
113	100		
111	102.2	82.8	124.2
192	18.8	16.9	25.3

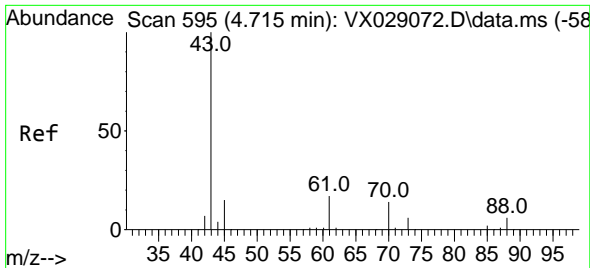


#36
 1,1-Dichloropropene
 Concen: 4.705 ug/l
 RT: 5.550 min Scan# 732
 Delta R.T. -0.146 min
 Lab File: VX029199.D
 Acq: 03 Jun 2022 18:45

Tgt Ion: 75 Resp: 23469

Ion	Ratio	Lower	Upper
75	100		
110	4.6	18.3	54.8#
77	0.0	24.8	37.2#



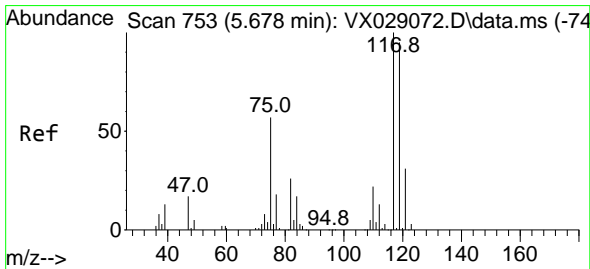
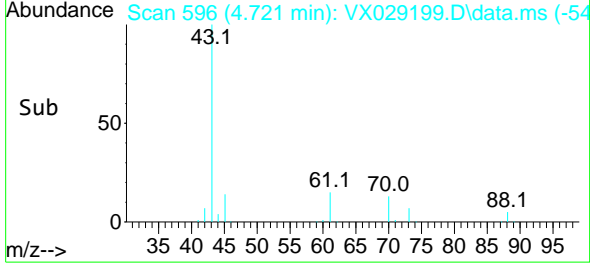
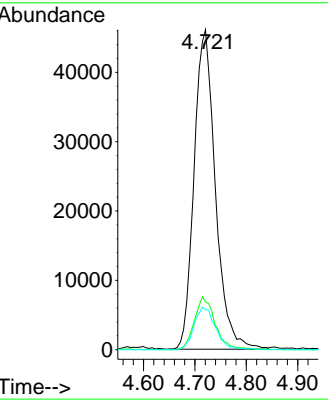
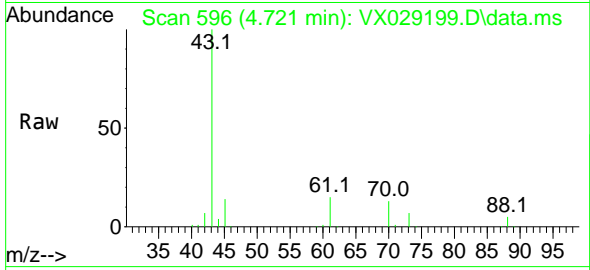


#37
 Ethyl Acetate
 Concen: 27.459 ug/l
 RT: 4.721 min Scan# 596
 Delta R.T. 0.006 min
 Lab File: VX029199.D
 Acq: 03 Jun 2022 18:45

Instrument : MSVOA_X
 ClientSampleId : 37S-20220531

Tgt Ion: 43 Resp: 132739

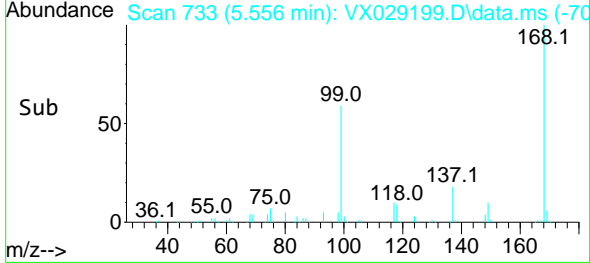
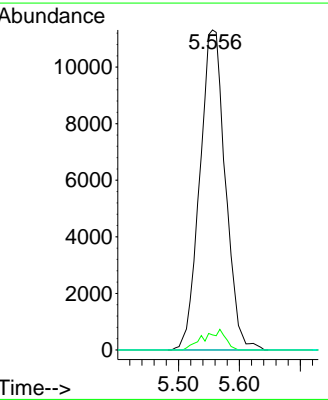
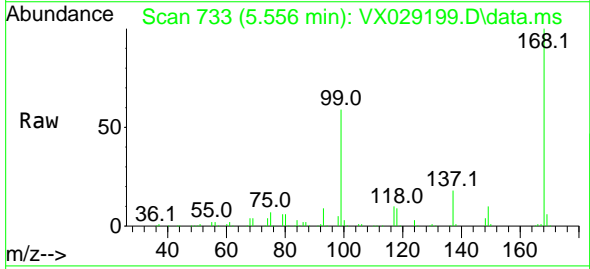
Ion	Ratio	Lower	Upper
43	100		
61	16.1	12.6	19.0
70	13.3	10.2	15.2

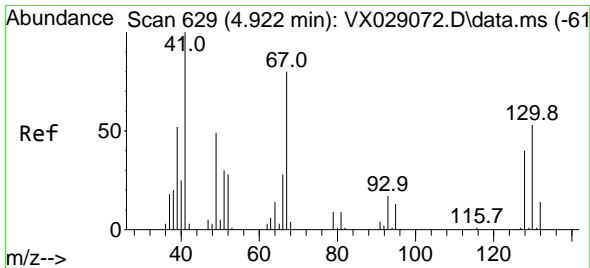


#38
 Carbon Tetrachloride
 Concen: 5.766 ug/l
 RT: 5.556 min Scan# 733
 Delta R.T. -0.122 min
 Lab File: VX029199.D
 Acq: 03 Jun 2022 18:45

Tgt Ion: 117 Resp: 32866

Ion	Ratio	Lower	Upper
117	100		
119	4.7	77.3	115.9#
121	0.0	24.2	36.2#





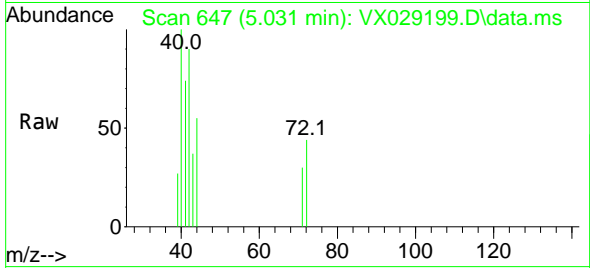
#41
 Methacrylonitrile
 Concen: 0.534 ug/l
 RT: 5.031 min Scan# 647
 Delta R.T. 0.109 min
 Lab File: VX029199.D
 Acq: 03 Jun 2022 18:45

Instrument :

MSVOA_X

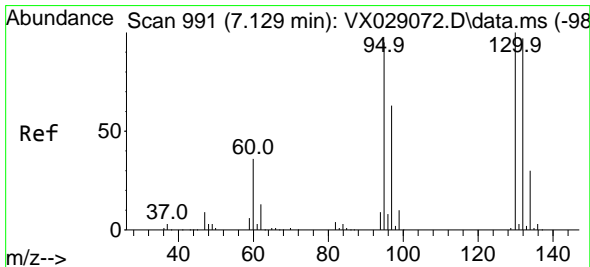
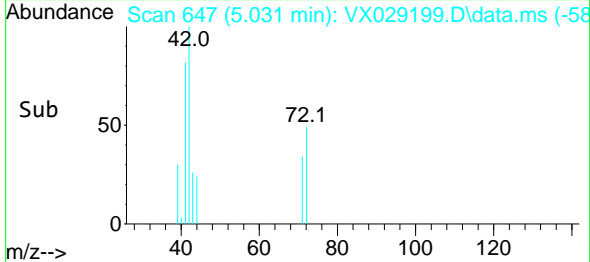
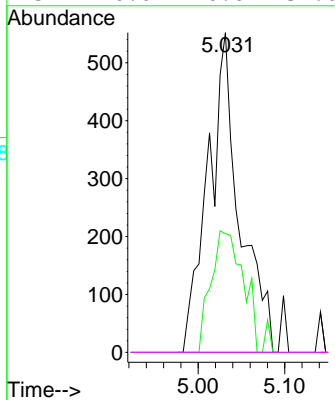
ClientSampleId :

37S-20220531



Tgt Ion: 41 Resp: 1395

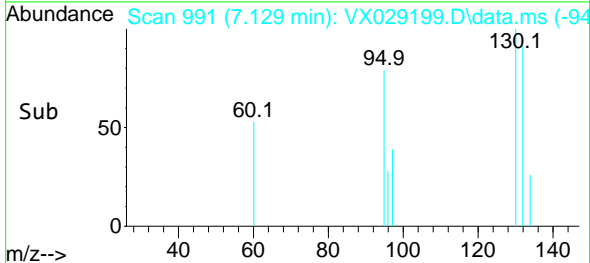
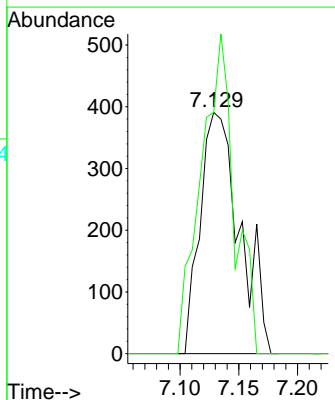
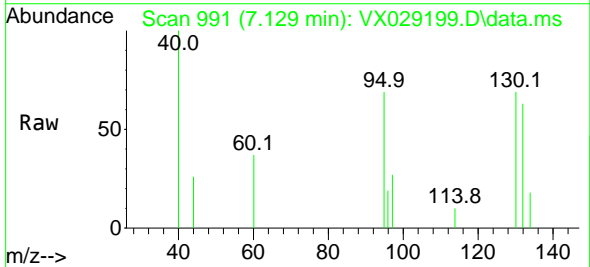
Ion	Ratio	Lower	Upper
41	100		
39	38.9	43.0	64.4#
67	0.0	70.2	105.4#
52	0.0	26.0	39.0#

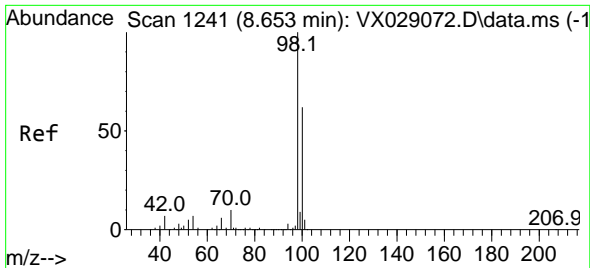


#44
 Trichloroethene
 Concen: Below Cal
 RT: 7.129 min Scan# 991
 Delta R.T. -0.000 min
 Lab File: VX029199.D
 Acq: 03 Jun 2022 18:45

Tgt Ion: 130 Resp: 919

Ion	Ratio	Lower	Upper
130	100		
95	100.0	0.0	188.8

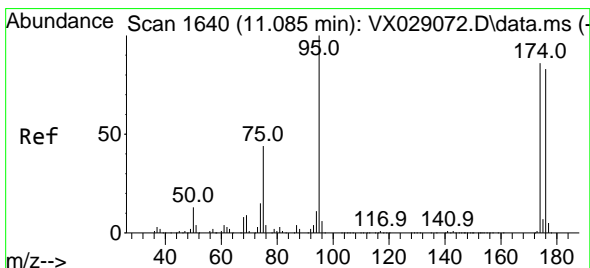
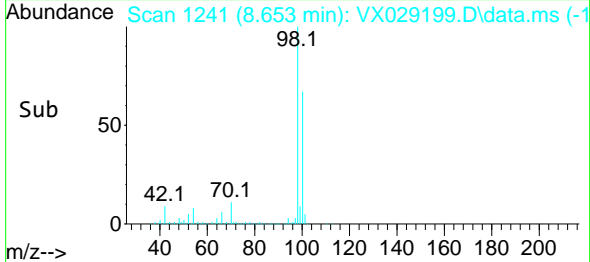
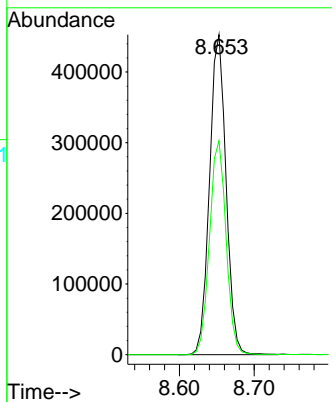
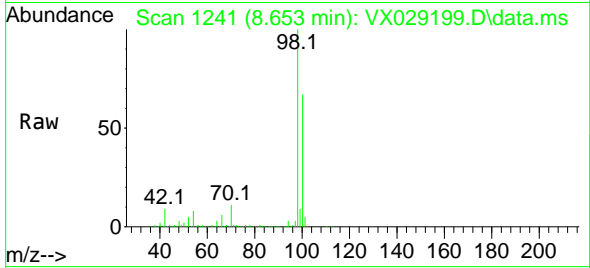




#50
 Toluene-d8
 Concen: 48.972 ug/l
 RT: 8.653 min Scan# 11
 Delta R.T. -0.000 min
 Lab File: VX029199.D
 Acq: 03 Jun 2022 18:45

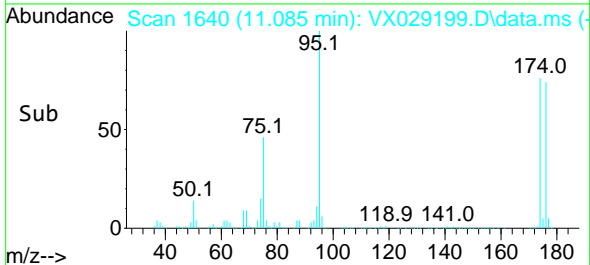
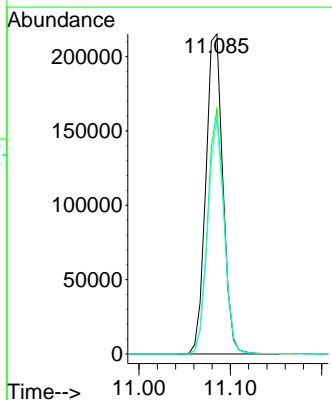
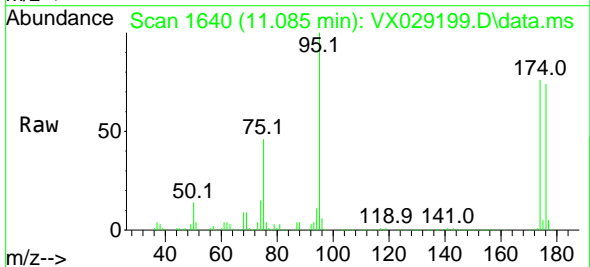
Instrument :
 MSVOA_X
 ClientSampleId :
 37S-20220531

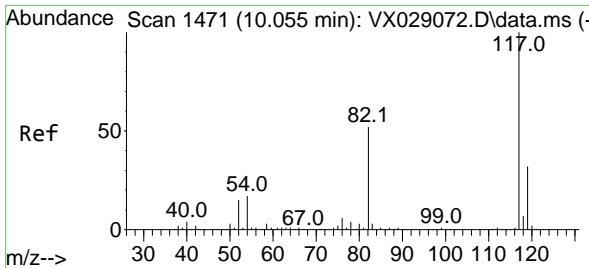
Tgt Ion: 98 Resp: 694324
 Ion Ratio Lower Upper
 98 100
 100 67.2 52.6 78.8



#62
 4-Bromofluorobenzene
 Concen: 50.780 ug/l
 RT: 11.085 min Scan# 1640
 Delta R.T. 0.000 min
 Lab File: VX029199.D
 Acq: 03 Jun 2022 18:45

Tgt Ion: 95 Resp: 278306
 Ion Ratio Lower Upper
 95 100
 174 73.7 0.0 163.0
 176 70.8 0.0 155.0



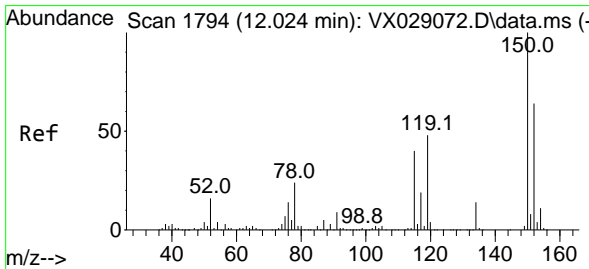
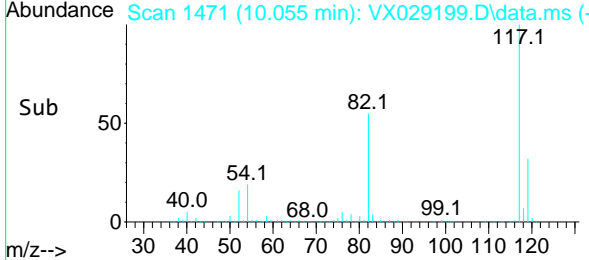
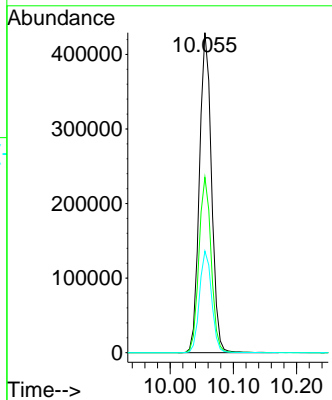
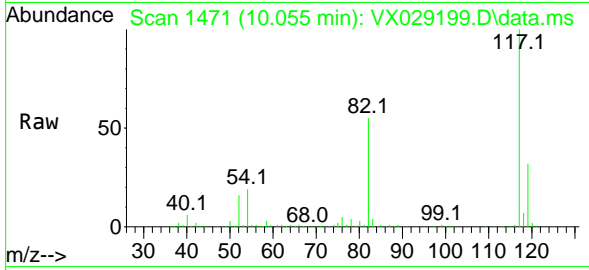


#63
 Chlorobenzene-d5
 Concen: 50.000 ug/l
 RT: 10.055 min Scan# 1471
 Delta R.T. -0.000 min
 Lab File: VX029199.D
 Acq: 03 Jun 2022 18:45

Instrument : MSVOA_X
 ClientSampleId : 37S-20220531

Tgt Ion:117 Resp: 571929

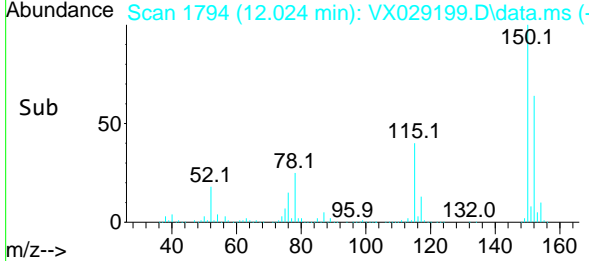
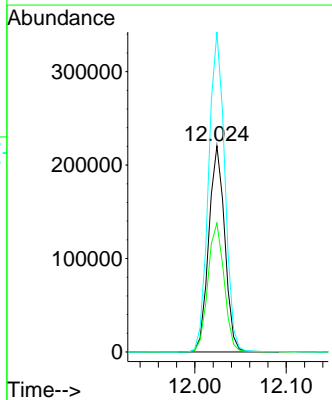
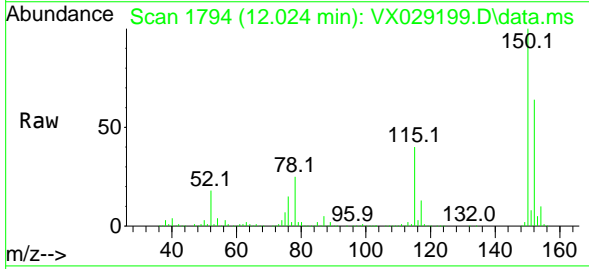
Ion	Ratio	Lower	Upper
117	100		
82	54.8	41.8	62.8
119	31.8	24.8	37.2

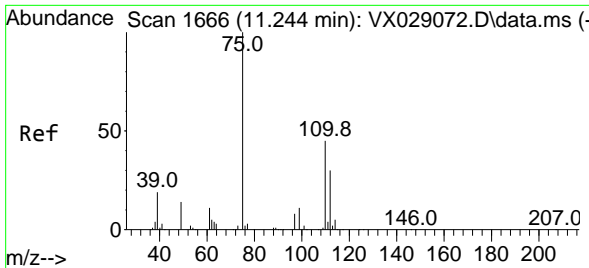


#72
 1,4-Dichlorobenzene-d4
 Concen: 50.000 ug/l
 RT: 12.024 min Scan# 1794
 Delta R.T. 0.000 min
 Lab File: VX029199.D
 Acq: 03 Jun 2022 18:45

Tgt Ion:152 Resp: 267120

Ion	Ratio	Lower	Upper
152	100		
115	63.4	37.5	112.7
150	157.0	0.0	338.2

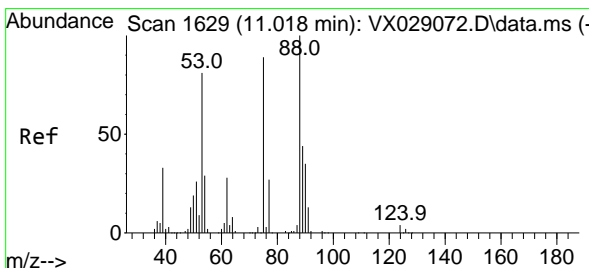
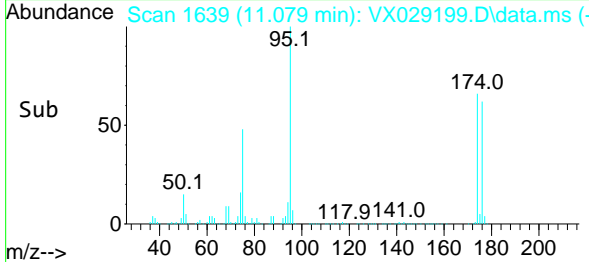
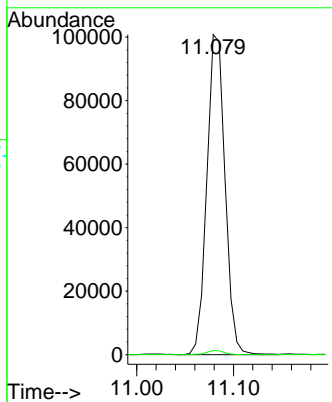
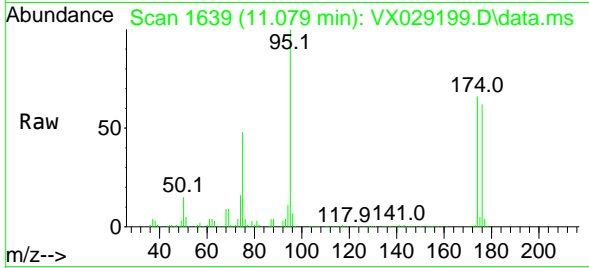




#76
 1,2,3-Trichloropropane
 Concen: 24.369 ug/l
 RT: 11.079 min Scan# 1639
 Delta R.T. -0.165 min
 Lab File: VX029199.D
 Acq: 03 Jun 2022 18:45

Instrument : MSVOA_X
 ClientSampleId : 37S-20220531

Tgt Ion: 75 Resp: 131960
 Ion Ratio Lower Upper
 75 100
 77 1.3 19.4 58.2#



#81
 trans-1,4-Dichloro-2-butene
 Concen: 71.495 ug/l
 RT: 11.079 min Scan# 1639
 Delta R.T. 0.061 min
 Lab File: VX029199.D
 Acq: 03 Jun 2022 18:45

Tgt Ion: 75 Resp: 131960
 Ion Ratio Lower Upper
 75 100
 53 0.0 69.0 103.4#
 89 0.0 37.0 55.6#

