

Data Path : Z:\VOASRV\HPCHEM1\MSVOA X\DATA\VX060419\
 Data File : VX010059.D
 Acq On : 04 Jun 2019 15:39
 Operator : JC/SP
 Sample : K3178-01 100X
 Misc : 5.0mL/MSVOA X/WATER
 ALS Vial : 10 Sample Multiplier: 1

Instrument :
 MSVOA_X
 ClientSampled :
 40061

Integration Parameters: RTEINT.P

Integrator: RTE
 Smoothing : ON Filtering: 5
 Sampling : 1 Min Area: 3 % of largest Peak
 Start Thrs: 0.2 Max Peaks: 100
 Stop Thrs : 0 Peak Location: TOP

If leading or trailing edge < 100 prefer < Baseline drop else tangent >
 Peak separation: 5

Method : Z:\VOASRV\HPCHEM1\MSVOA_X\METHOD\82X052819W.M
 Title : SW846 8260

Signal : TIC

peak #	R.T. min	first scan	max scan	last scan	PK TY	peak height	corr. area	corr. % max.	% of total
1	2.599	228	237	249	rBV	74930	143795	1.37%	0.630%
2	4.824	586	602	621	rBV	157548	463282	4.41%	2.028%
3	5.494	699	712	720	rBV	90583	266463	2.53%	1.167%
4	5.653	729	738	761	rVB	165322	512242	4.87%	2.243%
5	6.055	795	804	811	rBV	114133	288519	2.74%	1.263%
6	6.141	811	818	826	rVB	51050	133689	1.27%	0.585%
7	6.439	857	867	880	rVB	192427	487972	4.64%	2.136%
8	6.854	925	935	948	rBV	261383	621909	5.92%	2.723%
9	7.458	1024	1034	1043	rVB	72521	160104	1.52%	0.701%
10	7.872	1091	1102	1122	rBV	6142529	10511837	100.00%	46.020%
11	8.713	1234	1240	1246	rVB	532878	848062	8.07%	3.713%
12	8.780	1246	1251	1257	rVB	362129	539414	5.13%	2.362%
13	10.110	1464	1469	1479	rVB2	566802	819340	7.79%	3.587%
14	10.353	1502	1509	1515	rVV	324864	436017	4.15%	1.909%
15	10.695	1560	1565	1574	rVB	100530	139987	1.33%	0.613%
16	11.134	1631	1637	1647	rVB	460719	602215	5.73%	2.636%
17	11.804	1743	1747	1756	rVB	102796	136128	1.29%	0.596%
18	12.073	1787	1791	1797	rVV	536679	714468	6.80%	3.128%
19	12.268	1819	1823	1830	rBV	643532	790859	7.52%	3.462%
20	12.475	1851	1857	1861	rBV2	105808	139076	1.32%	0.609%
21	12.957	1931	1936	1944	rBV7	40876	128028	1.22%	0.560%
22	13.316	1990	1995	1998	rBV	255758	300587	2.86%	1.316%
23	13.645	2044	2049	2057	rBV2	417913	593879	5.65%	2.600%
24	13.822	2075	2078	2081	rVV3	106734	142559	1.36%	0.624%
25	13.895	2085	2090	2097	rVB2	197706	324231	3.08%	1.419%
26	13.969	2097	2102	2108	rBV2	116396	204613	1.95%	0.896%
27	14.090	2118	2122	2126	rBV	514295	520374	4.95%	2.278%
28	14.279	2149	2153	2162	rVB3	105655	211502	2.01%	0.926%
29	14.554	2196	2198	2204	rVB2	103119	142397	1.35%	0.623%
30	14.670	2213	2217	2224	rBV3	204703	378371	3.60%	1.656%
31	14.810	2236	2240	2243	rBV	609280	624962	5.95%	2.736%
32	15.273	2313	2316	2320	rVB	165354	192459	1.83%	0.843%
33	15.554	2357	2362	2368	rBV2	225105	322493	3.07%	1.412%

Data Path : Z:\VOASRV\HPCHEM1\MSVOA X\DATA\VX060419\
Data File : VX010059.D
Acq On : 04 Jun 2019 15:39
Operator : JC/SP
Sample : K3178-01 100X
Misc : 5.0mL/MSVOA X/WATER
ALS Vial : 10 Sample Multiplier: 1

Instrument :
MSVOA_X
ClientSampleId :
40061

Integration Parameters: RTEINT.P
Integrator: RTE
Smoothing : ON Filtering: 5
Sampling : 1 Min Area: 3 % of largest Peak
Start Thrs: 0.2 Max Peaks: 100
Stop Thrs : 0 Peak Location: TOP

If leading or trailing edge < 100 prefer < Baseline drop else tangent >
Peak separation: 5

Method : Z:\VOASRV\HPCHEM1\MSVOA_X\METHOD\82X052819W.M
Title : SW846 8260

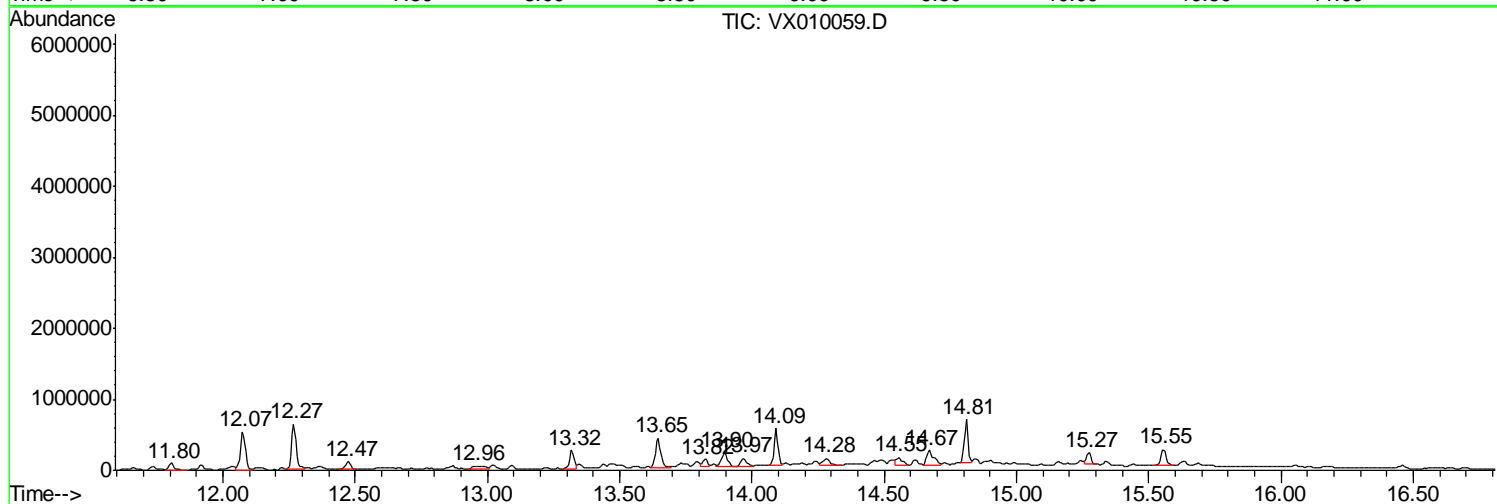
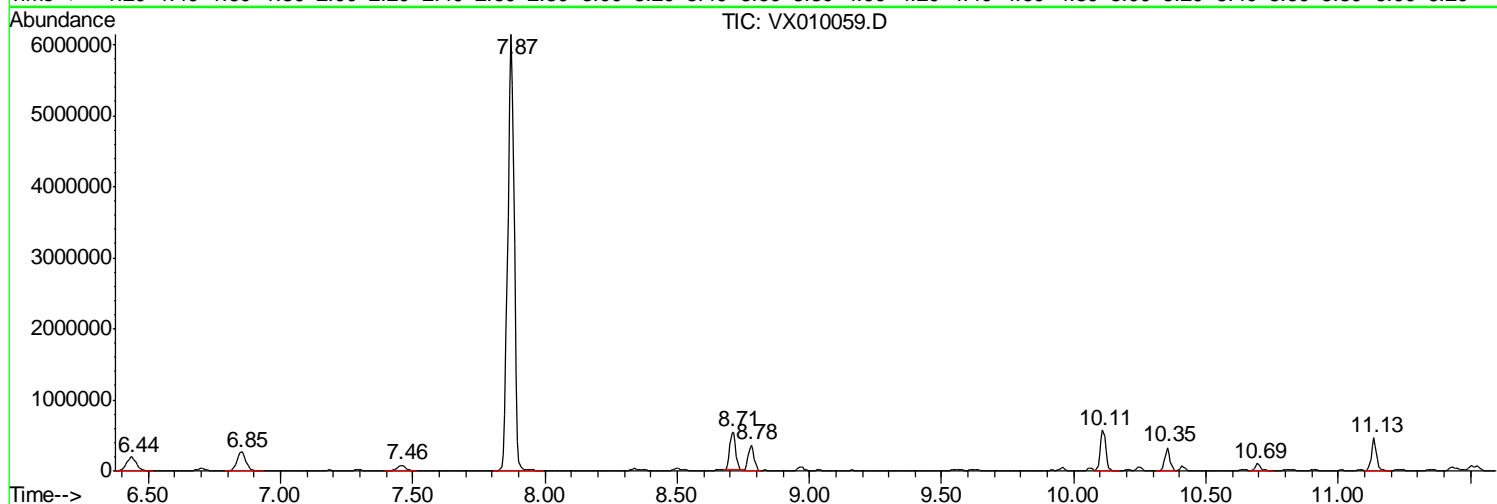
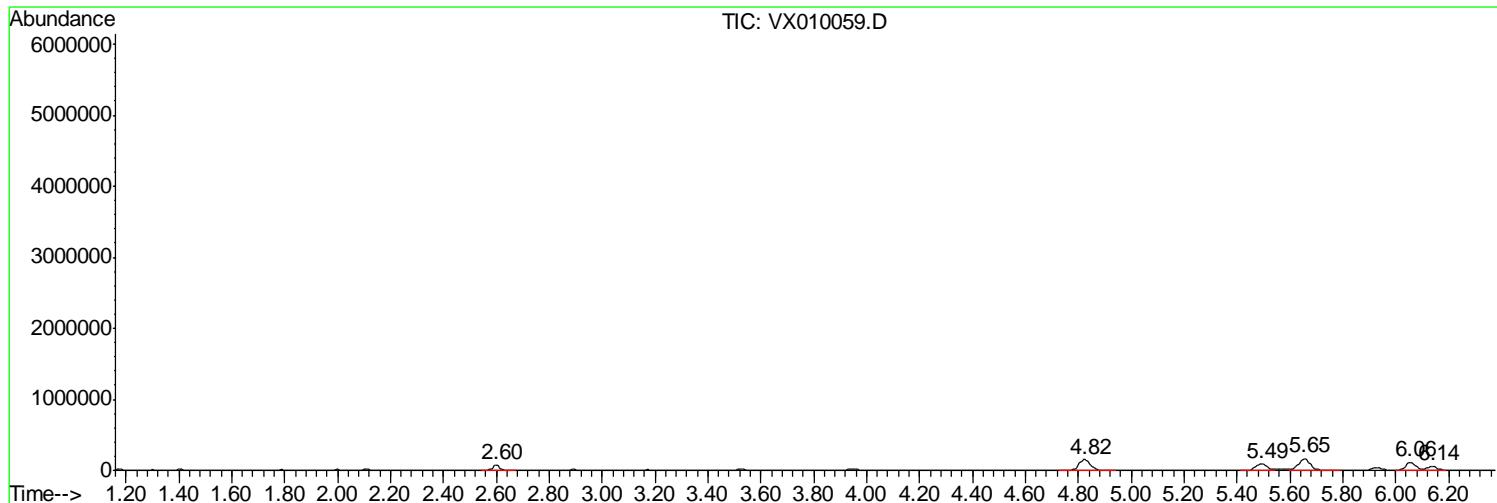
Sum of corrected areas: 22841833

Data Path : Z:\VOASRV\HPCHEM1\MSVOA X\DATA\VX060419\
 Data File : VX010059.D
 Acq On : 04 Jun 2019 15:39
 Operator : JC/SP
 Sample : K3178-01 100X
 Misc : 5.0mL/MSVOA X/WATER
 ALS Vial : 10 Sample Multiplier: 1

Instrument :
 MSVOA_X
 ClientSampleId :
 40061

Quant Method : Z:\VOASRV\HPCHEM1\MSVOA_X\METHOD\82X052819W.M
 Quant Title : SW846 8260

TIC Library : C:\DATABASE\NIST11.L
 TIC Integration Parameters: LSCINT.P



Data Path : Z:\VOASRV\HPCHEM1\MSVOA X\DATA\VX060419\
 Data File : VX010059.D
 Acq On : 04 Jun 2019 15:39
 Operator : JC/SP
 Sample : K3178-01 100X
 Misc : 5.0mL/MSVOA X/WATER
 ALS Vial : 10 Sample Multiplier: 1

Instrument :
 MSVOA_X
 ClientSampled :
 40061

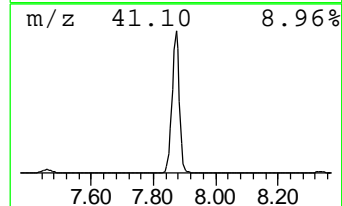
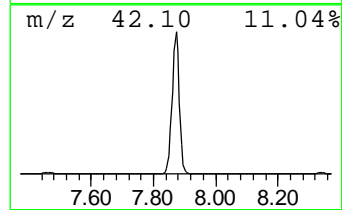
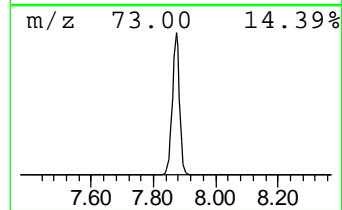
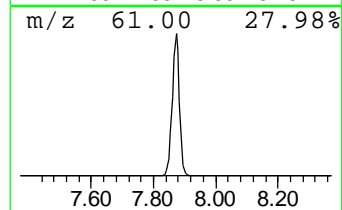
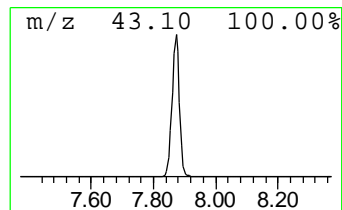
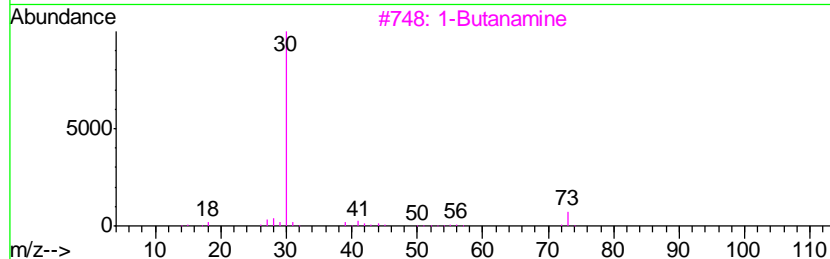
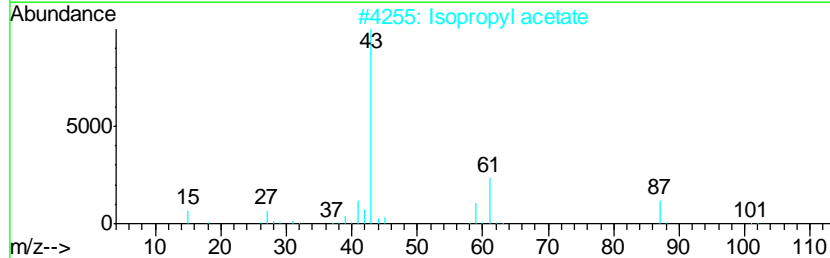
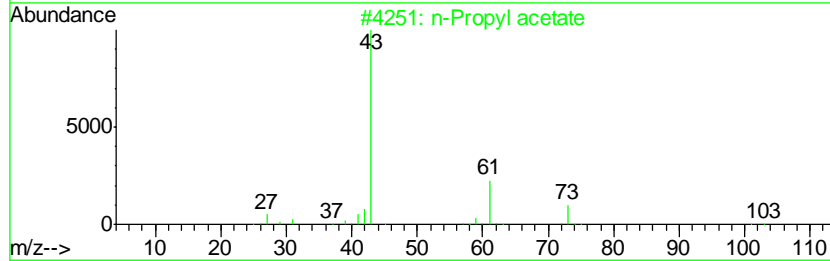
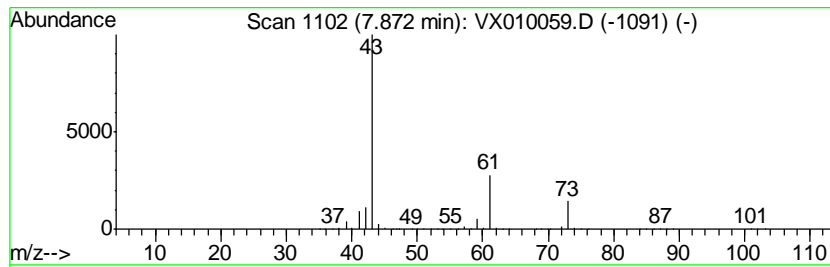
Quant Method : Z:\VOASRV\HPCHEM1\MSVOA_X\METHOD\82X052819W.M
 Quant Title : SW846 8260

TIC Library : C:\DATABASE\NIST11.L
 TIC Integration Parameters: LSCINT.P

 Peak Number 1 n-Propyl acetate Concentration Rank 1

R.T.	EstConc	Area	Relative to ISTD	R.T.
7.87	845.13 ug/l	10511800	1,4-Difluorobenzene	6.85

Hit#	of	Tentative ID	MW	MolForm	CAS#	Qual
1	5	n-Propyl acetate	102	C5H10O2	000109-60-4	83
2		Isopropyl acetate	102	C5H10O2	000108-21-4	36
3		1-Butanamine	73	C4H11N	000109-73-9	7
4		Isobutylamine	73	C4H11N	000078-81-9	5
5		Butane, 2-methyl-	72	C5H12	000078-78-4	4



Data Path : Z:\VOASRV\HPCHEM1\MSVOA X\DATA\VX060419\
 Data File : VX010059.D
 Acq On : 04 Jun 2019 15:39
 Operator : JC/SP
 Sample : K3178-01 100X
 Misc : 5.0mL/MSVOA X/WATER
 ALS Vial : 10 Sample Multiplier: 1

Instrument :
 MSVOA_X
 ClientSampled :
 40061

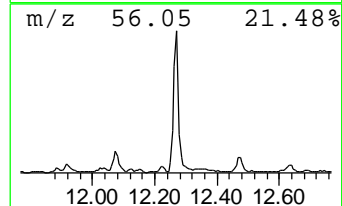
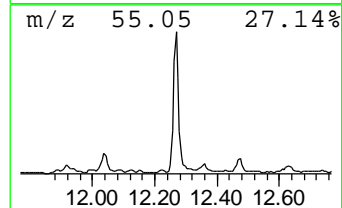
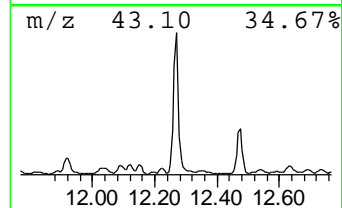
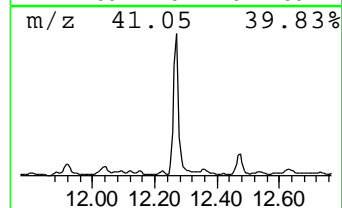
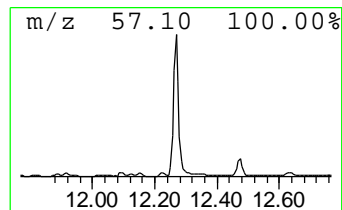
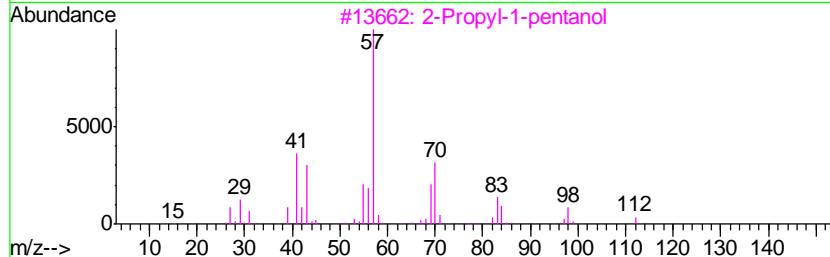
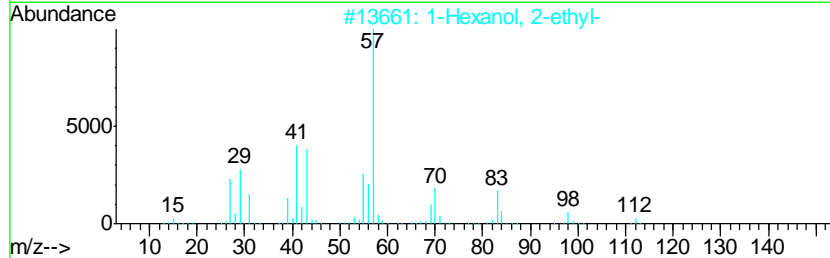
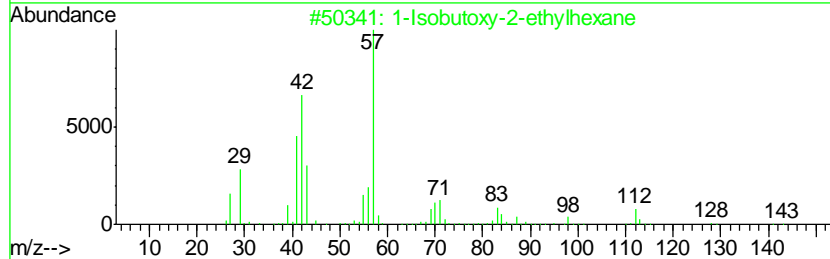
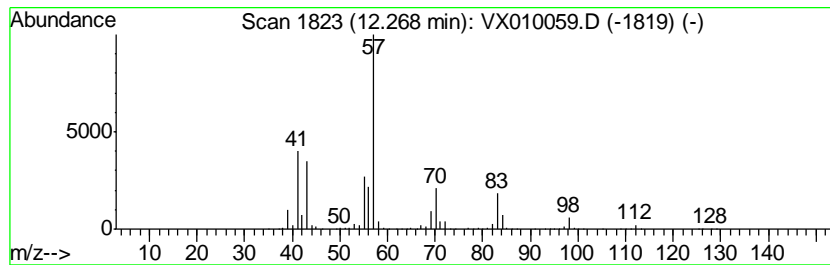
Quant Method : Z:\VOASRV\HPCHEM1\MSVOA_X\METHOD\82X052819W.M
 Quant Title : SW846 8260

TIC Library : C:\DATABASE\NIST11.L
 TIC Integration Parameters: LSCINT.P

 Peak Number 2 1-Isobutoxy-2-ethylhexane Concentration Rank 2

R.T.	EstConc	Area	Relative to ISTD	R.T.
12.27	55.35 ug/l	790859	1,4-Dichlorobenzene-d4	12.07

Hit#	of	Tentative ID	MW	MolForm	CAS#	Qual
1	5	1-Isobutoxy-2-ethylhexane	186	C12H26O	1000139-90-3	83
2		1-Hexanol, 2-ethyl-	130	C8H18O	000104-76-7	78
3		2-Propyl-1-pentanol	130	C8H18O	058175-57-8	50
4		Carbonic acid, isobutyl 2-ethylh...	230	C13H26O3	1000357-82-9	40
5		2-Ethyl-1-hexanol, methyl ether	144	C9H20O	1000365-10-2	40



Data Path : Z:\VOASRV\HPCHEM1\MSVOA X\DATA\VX060419\
 Data File : VX010059.D
 Acq On : 04 Jun 2019 15:39
 Operator : JC/SP
 Sample : K3178-01 100X
 Misc : 5.0mL/MSVOA X/WATER
 ALS Vial : 10 Sample Multiplier: 1

Instrument :
 MSVOA_X
 ClientSampleID :
 40061

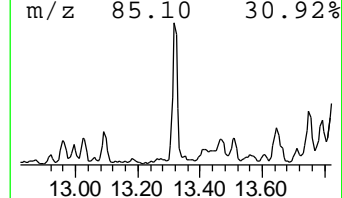
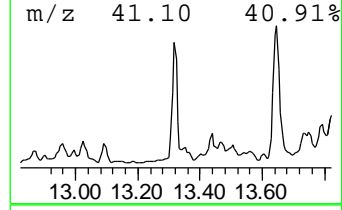
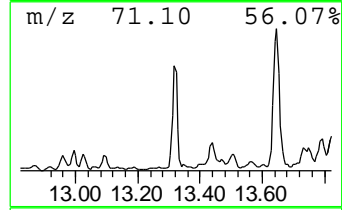
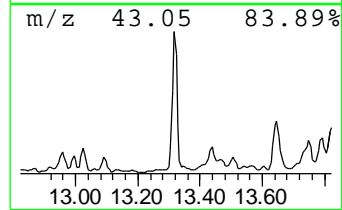
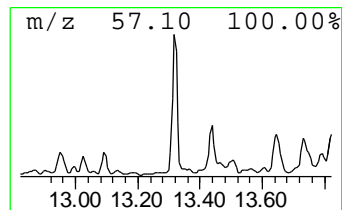
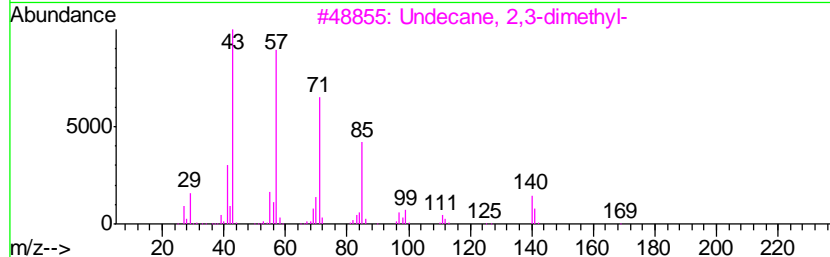
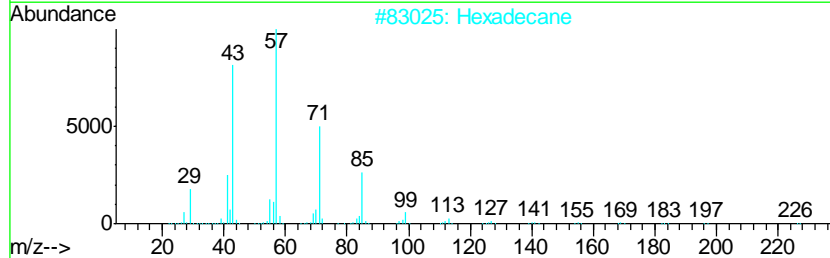
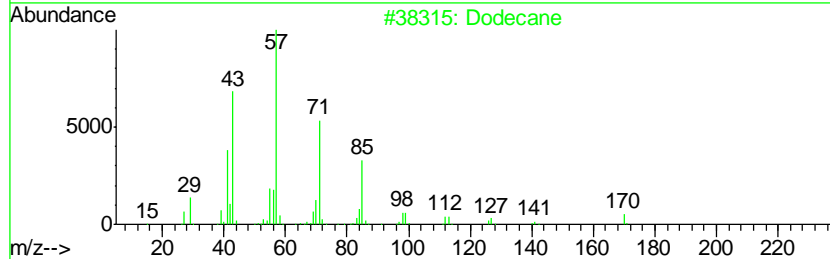
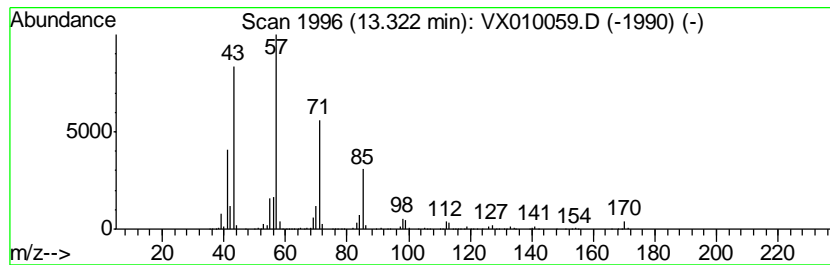
Quant Method : Z:\VOASRV\HPCHEM1\MSVOA_X\METHOD\82X052819W.M
 Quant Title : SW846 8260

TIC Library : C:\DATABASE\NIST11.L
 TIC Integration Parameters: LSCINT.P

 Peak Number 3 Dodecane Concentration Rank 9

R.T.	EstConc	Area	Relative to ISTD	R.T.
13.32	21.04 ug/l	300587	1,4-Dichlorobenzene-d4	12.07

Hit#	of	Tentative ID	MW	MolForm	CAS#	Qual
1	5	Dodecane	170	C12H26	000112-40-3	94
2		Hexadecane	226	C16H34	000544-76-3	90
3		Undecane, 2,3-dimethyl-	184	C13H28	017312-77-5	72
4		Decane, 2,3,5-trimethyl-	184	C13H28	062238-11-3	64
5		1-Iodo-2-methylnonane	268	C10H21I	1000101-47-9	64



Data Path : Z:\VOASRV\HPCHEM1\MSVOA X\DATA\VX060419\
 Data File : VX010059.D
 Acq On : 04 Jun 2019 15:39
 Operator : JC/SP
 Sample : K3178-01 100X
 Misc : 5.0mL/MSVOA X/WATER
 ALS Vial : 10 Sample Multiplier: 1

Instrument :
 MSVOA_X
 ClientSampled :
 40061

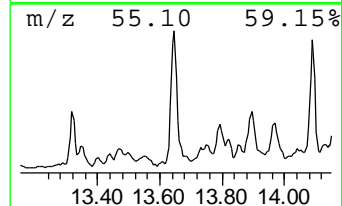
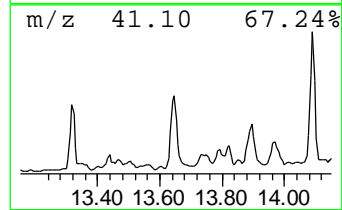
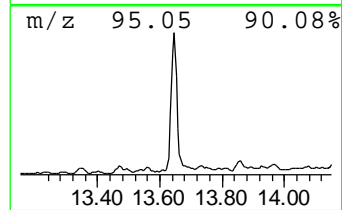
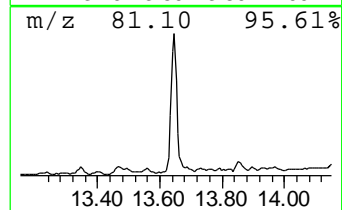
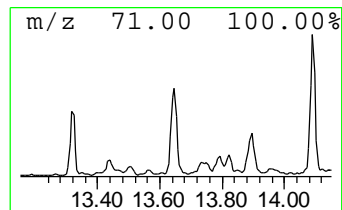
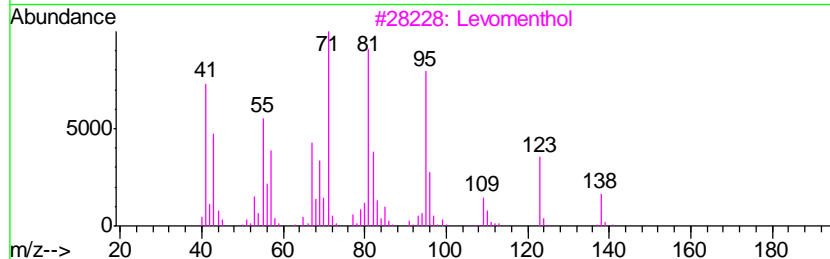
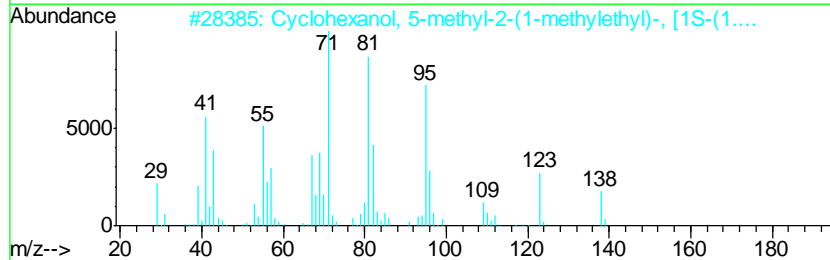
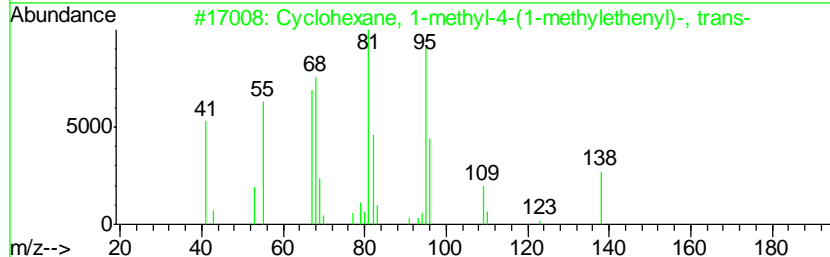
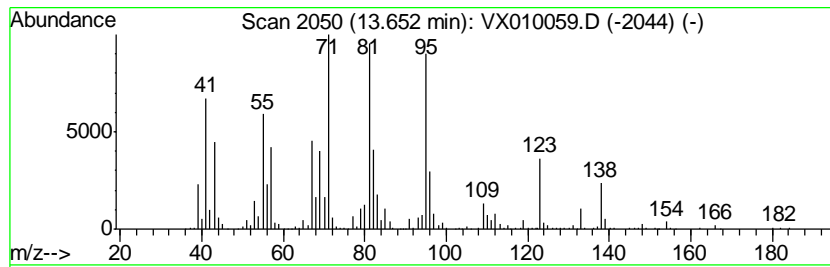
Quant Method : Z:\VOASRV\HPCHEM1\MSVOA_X\METHOD\82X052819W.M
 Quant Title : SW846 8260

TIC Library : C:\DATABASE\NIST11.L
 TIC Integration Parameters: LSCINT.P

 Peak Number 4 Cyclohexane, 1-methyl-4-(1-... Concentration Rank 4

R.T.	EstConc	Area	Relative to ISTD	R.T.
13.65	41.56 ug/l	593879	1,4-Dichlorobenzene-d4	12.07

Hit#	of	Tentative ID	MW	MolForm	CAS#	Qual
1	5	Cyclohexane, 1-methyl-4-(1-methy...	138	C10H18	001124-25-0	92
2		Cyclohexanol, 5-methyl-2-(1-meth...	156	C10H20O	002216-52-6	91
3		Levomenthol	156	C10H20O	002216-51-5	91
4		Cyclohexanol, 5-methyl-2-(1-meth...	156	C10H20O	015356-70-4	91
5		Cyclohexanol, 5-methyl-2-(1-meth...	156	C10H20O	001490-04-6	91



Data Path : Z:\VOASRV\HPCHEM1\MSVOA X\DATA\VX060419\
 Data File : VX010059.D
 Acq On : 04 Jun 2019 15:39
 Operator : JC/SP
 Sample : K3178-01 100X
 Misc : 5.0mL/MSVOA X/WATER
 ALS Vial : 10 Sample Multiplier: 1

Instrument :
 MSVOA_X
 ClientSampled :
 40061

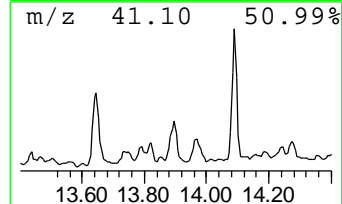
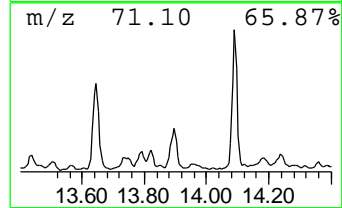
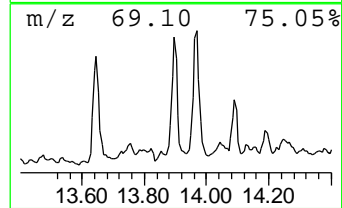
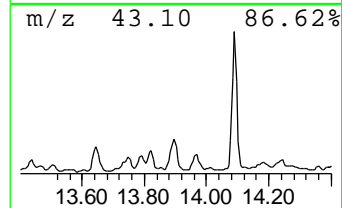
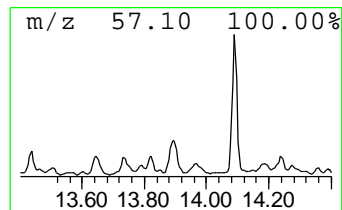
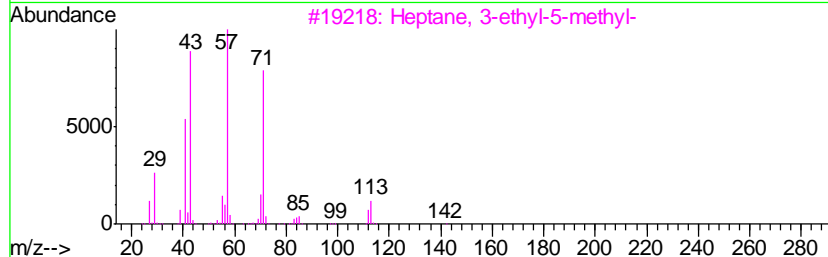
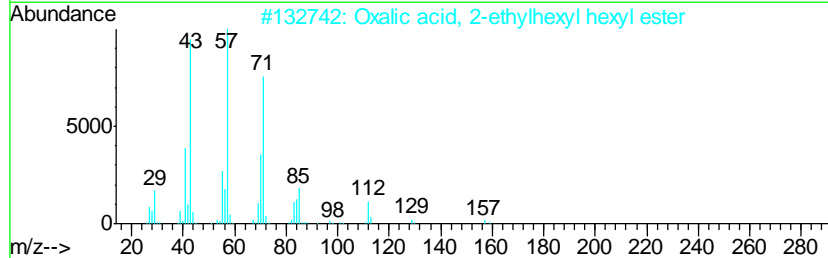
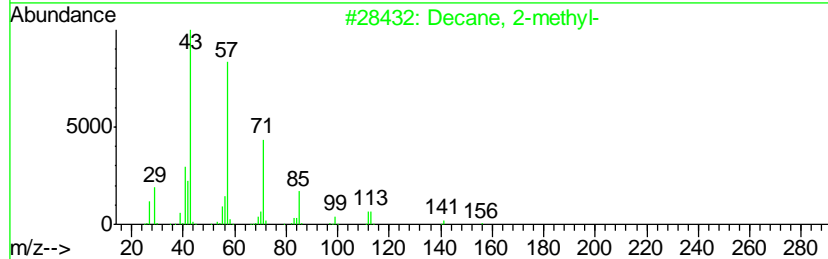
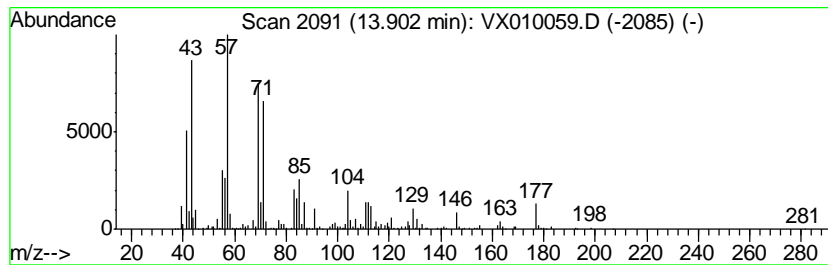
Quant Method : Z:\VOASRV\HPCHEM1\MSVOA_X\METHOD\82X052819W.M
 Quant Title : SW846 8260

TIC Library : C:\DATABASE\NIST11.L
 TIC Integration Parameters: LSCINT.P

 Peak Number 5 Decane, 2-methyl- Concentration Rank 7

R.T.	EstConc	Area	Relative to ISTD	R.T.
13.90	22.69 ug/l	324231	1,4-Dichlorobenzene-d4	12.07

Hit#	of	Tentative ID	MW	MolForm	CAS#	Qual
1	5	Decane, 2-methyl-	156	C11H24	006975-98-0	64
2		Oxalic acid, 2-ethylhexyl hexyl ...	286	C16H30O4	1000309-38-9	58
3		Heptane, 3-ethyl-5-methyl-	142	C10H22	052896-90-9	55
4		Decane, 2,6,7-trimethyl-	184	C13H28	062108-25-2	53
5		Nonane, 3-methyl-	142	C10H22	005911-04-6	50



Data Path : Z:\VOASRV\HPCHEM1\MSVOA X\DATA\VX060419\
 Data File : VX010059.D
 Acq On : 04 Jun 2019 15:39
 Operator : JC/SP
 Sample : K3178-01 100X
 Misc : 5.0mL/MSVOA X/WATER
 ALS Vial : 10 Sample Multiplier: 1

Instrument :
 MSVOA_X
 ClientSampleID :
 40061

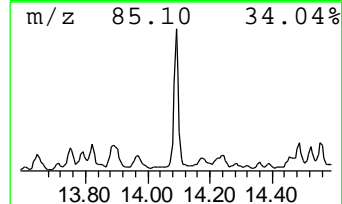
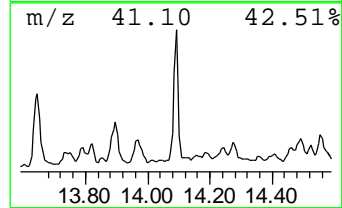
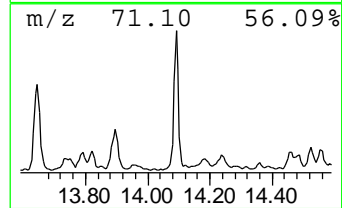
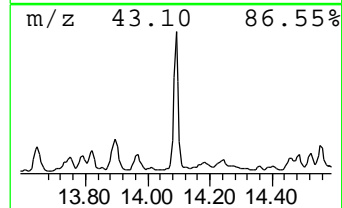
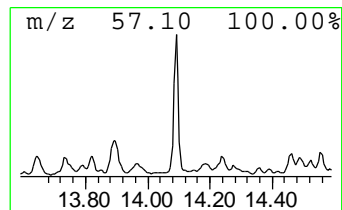
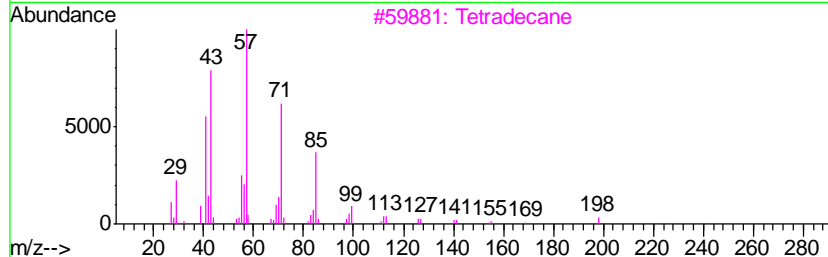
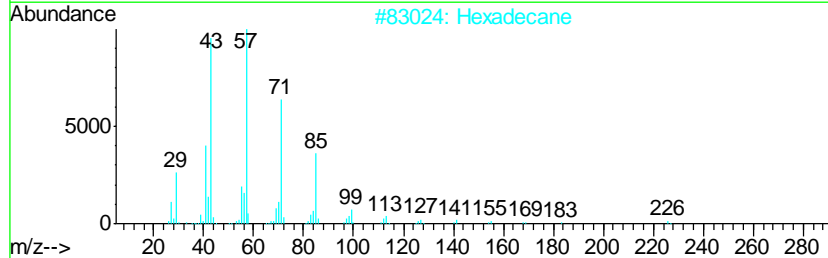
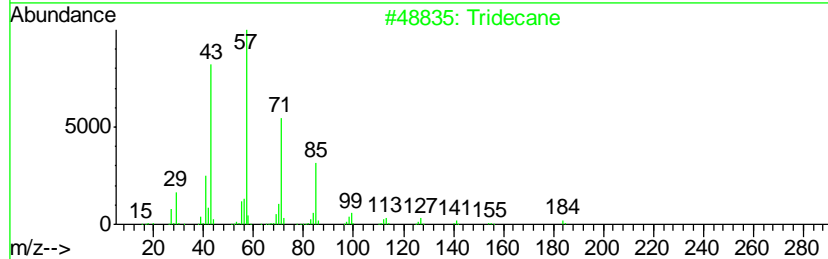
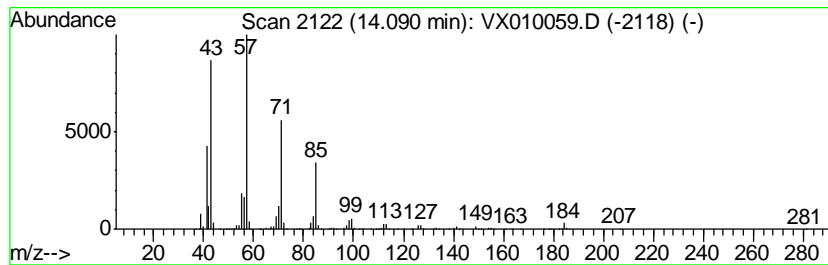
Quant Method : Z:\VOASRV\HPCHEM1\MSVOA_X\METHOD\82X052819W.M
 Quant Title : SW846 8260

TIC Library : C:\DATABASE\NIST11.L
 TIC Integration Parameters: LSCINT.P

 Peak Number 6 Tridecane Concentration Rank 5

R.T.	EstConc	Area	Relative to ISTD	R.T.
14.09	36.42 ug/l	520374	1,4-Dichlorobenzene-d4	12.07

Hit#	of	Tentative ID	MW	MolForm	CAS#	Qual
1	5	Tridecane	184	C13H28	000629-50-5	94
2		Hexadecane	226	C16H34	000544-76-3	91
3		Tetradecane	198	C14H30	000629-59-4	90
4		Undecane	156	C11H24	001120-21-4	86
5		Undecane, 2,3-dimethyl-	184	C13H28	017312-77-5	83



Data Path : Z:\VOASRV\HPCHEM1\MSVOA X\DATA\VX060419\
 Data File : VX010059.D
 Acq On : 04 Jun 2019 15:39
 Operator : JC/SP
 Sample : K3178-01 100X
 Misc : 5.0mL/MSVOA X/WATER
 ALS Vial : 10 Sample Multiplier: 1

Instrument :
 MSVOA_X
 ClientSampled :
 40061

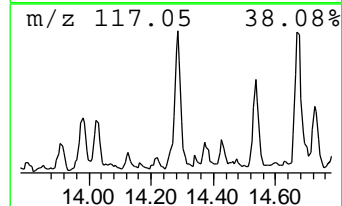
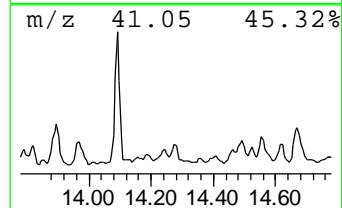
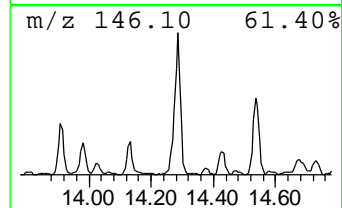
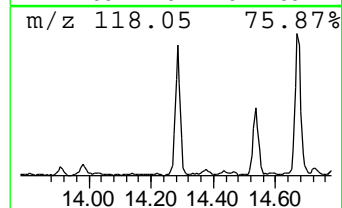
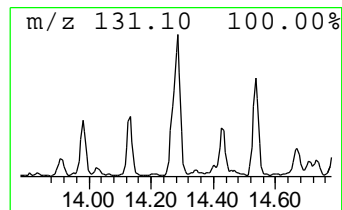
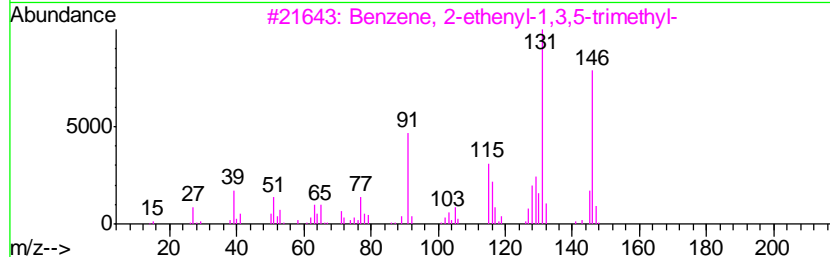
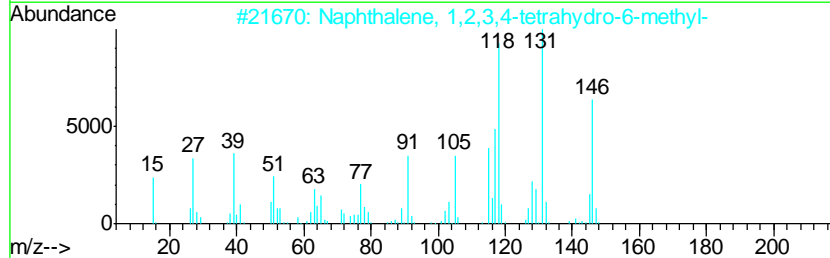
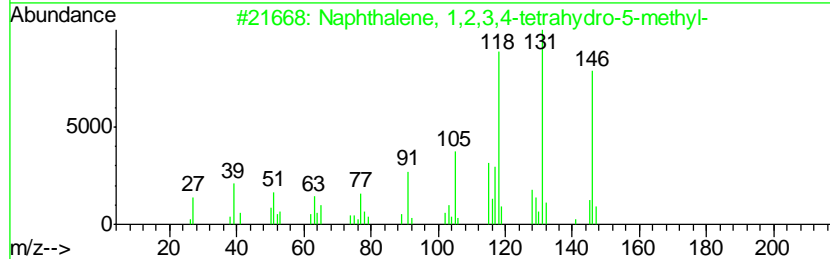
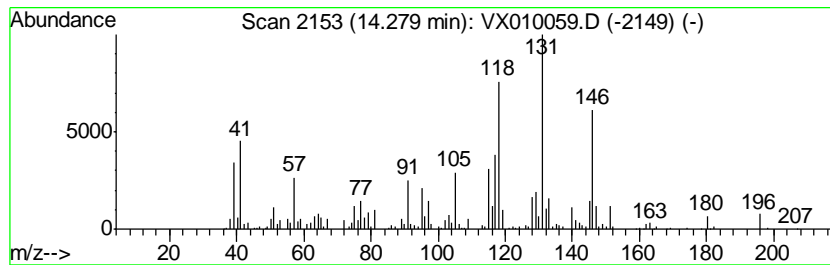
Quant Method : Z:\VOASRV\HPCHEM1\MSVOA_X\METHOD\82X052819W.M
 Quant Title : SW846 8260

TIC Library : C:\DATABASE\NIST11.L
 TIC Integration Parameters: LSCINT.P

 Peak Number 7 Naphthalene, 1,2,3,4-tetra... Concentration Rank 10

R.T.	EstConc	Area	Relative to ISTD	R.T.
14.28	14.80 ug/l	211502	1,4-Dichlorobenzene-d4	12.07

Hit#	of	Tentative ID	MW	MolForm	CAS#	Qual
1	5	Naphthalene, 1,2,3,4-tetrahydro-...	146	C11H14	002809-64-5	97
2		Naphthalene, 1,2,3,4-tetrahydro-...	146	C11H14	001680-51-9	97
3		Benzene, 2-ethenyl-1,3,5-trimethyl-	146	C11H14	000769-25-5	64
4		Benzene, (1-ethyl-2-propenyl)-	146	C11H14	019947-22-9	58
5		Benzene, (3-methyl-2-butenyl)-	146	C11H14	004489-84-3	50



Data Path : Z:\VOASRV\HPCHEM1\MSVOA X\DATA\VX060419\
 Data File : VX010059.D
 Acq On : 04 Jun 2019 15:39
 Operator : JC/SP
 Sample : K3178-01 100X
 Misc : 5.0mL/MSVOA X/WATER
 ALS Vial : 10 Sample Multiplier: 1

Instrument :
 MSVOA_X
 ClientSampleID :
 40061

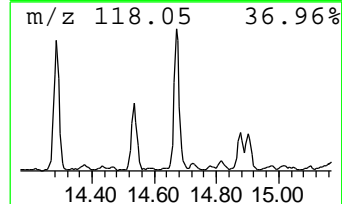
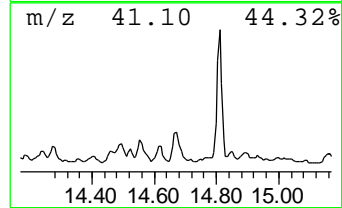
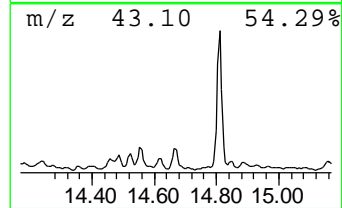
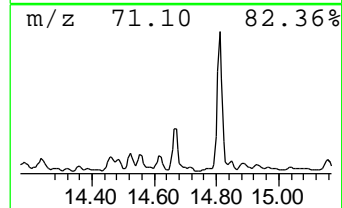
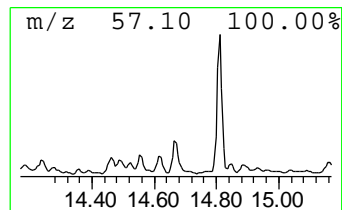
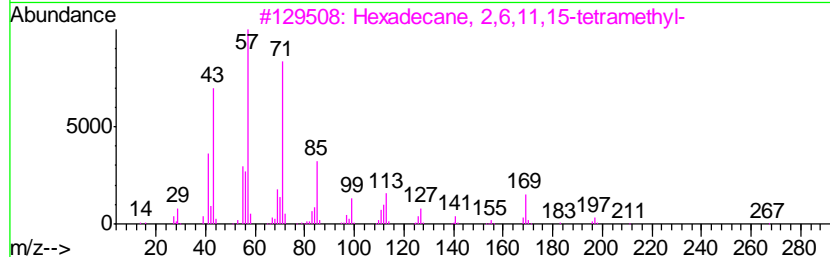
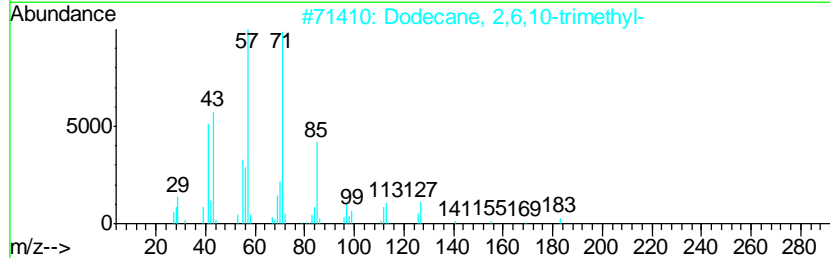
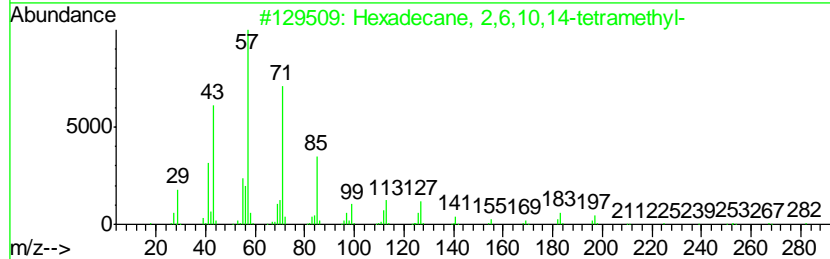
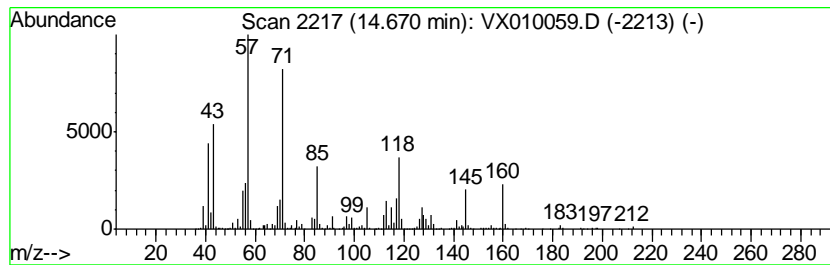
Quant Method : Z:\VOASRV\HPCHEM1\MSVOA_X\METHOD\82X052819W.M
 Quant Title : SW846 8260

TIC Library : C:\DATABASE\NIST11.L
 TIC Integration Parameters: LSCINT.P

 Peak Number 8 Hexadecane, 2,6,10,14-tetra... Concentration Rank 6

R.T.	EstConc	Area	Relative to ISTD	R.T.
14.67	26.48 ug/l	378371	1,4-Dichlorobenzene-d4	12.07

Hit#	of	Tentative ID	MW	MolForm	CAS#	Qual
1	5	Hexadecane, 2,6,10,14-tetramethyl-	282	C20H42	000638-36-8	58
2		Dodecane, 2,6,10-trimethyl-	212	C15H32	003891-98-3	53
3		Hexadecane, 2,6,11,15-tetramethyl-	282	C20H42	000504-44-9	52
4		Nonane, 3-methyl-	142	C10H22	005911-04-6	49
5		Undecane, 4,6-dimethyl-	184	C13H28	017312-82-2	49



Data Path : Z:\VOASRV\HPCHEM1\MSVOA X\DATA\VX060419\
 Data File : VX010059.D
 Acq On : 04 Jun 2019 15:39
 Operator : JC/SP
 Sample : K3178-01 100X
 Misc : 5.0mL/MSVOA X/WATER
 ALS Vial : 10 Sample Multiplier: 1

Instrument :
 MSVOA_X
 ClientSampled :
 40061

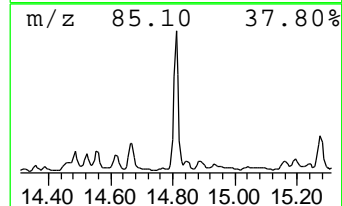
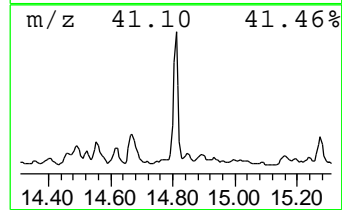
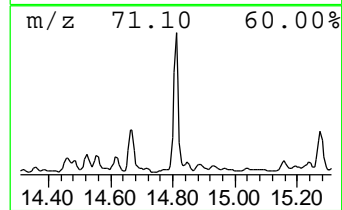
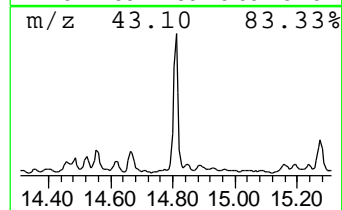
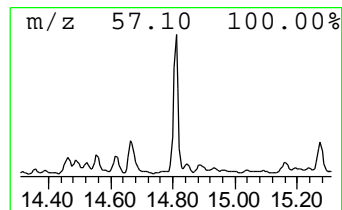
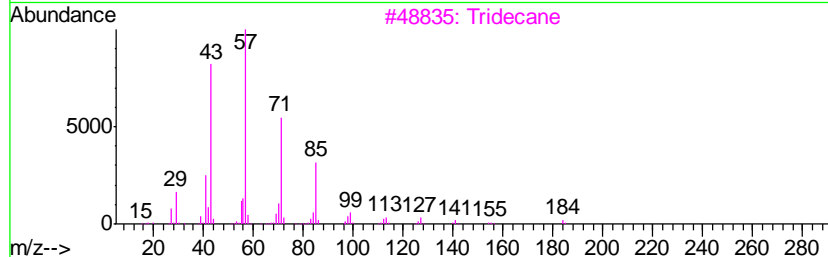
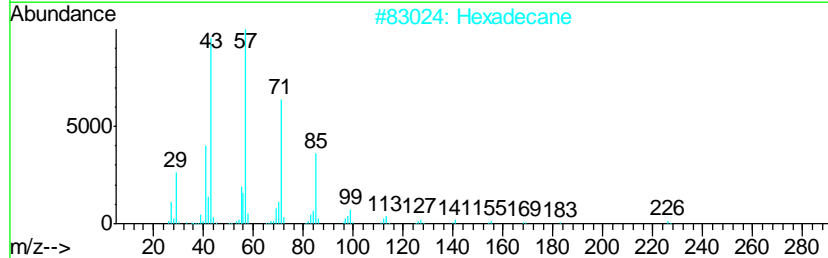
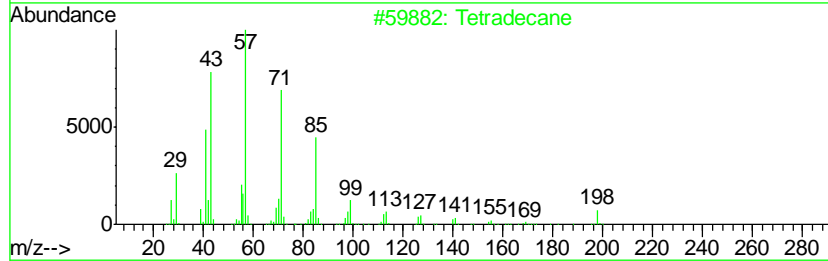
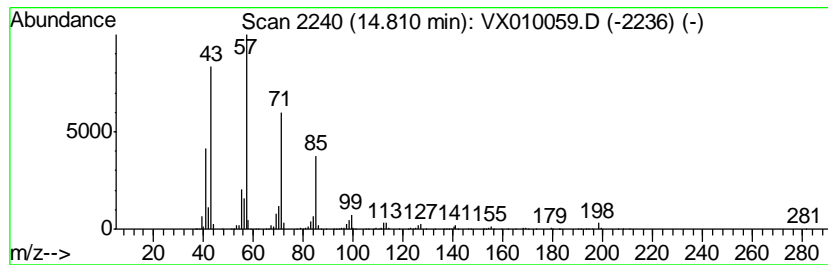
Quant Method : Z:\VOASRV\HPCHEM1\MSVOA_X\METHOD\82X052819W.M
 Quant Title : SW846 8260

TIC Library : C:\DATABASE\NIST11.L
 TIC Integration Parameters: LSCINT.P

 Peak Number 9 Tetradecane Concentration Rank 3

R.T.	EstConc	Area	Relative to ISTD	R.T.
14.81	43.74 ug/l	624962	1,4-Dichlorobenzene-d4	12.07

Hit#	of	Tentative ID	MW	MolForm	CAS#	Qual
1	5	Tetradecane	198	C14H30	000629-59-4	97
2		Hexadecane	226	C16H34	000544-76-3	91
3		Tridecane	184	C13H28	000629-50-5	90
4		Undecane	156	C11H24	001120-21-4	86
5		Dodecane	170	C12H26	000112-40-3	72



Data Path : Z:\VOASRV\HPCHEM1\MSVOA X\DATA\VX060419\
 Data File : VX010059.D
 Acq On : 04 Jun 2019 15:39
 Operator : JC/SP
 Sample : K3178-01 100X
 Misc : 5.0mL/MSVOA X/WATER
 ALS Vial : 10 Sample Multiplier: 1

Instrument :
 MSVOA_X
 ClientSampled :
 40061

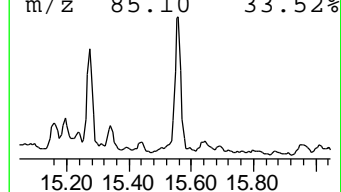
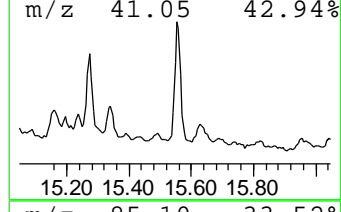
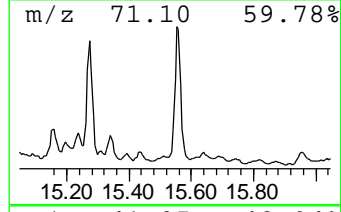
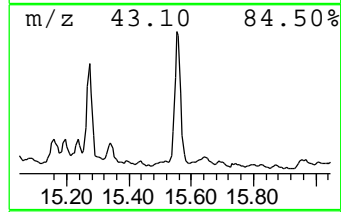
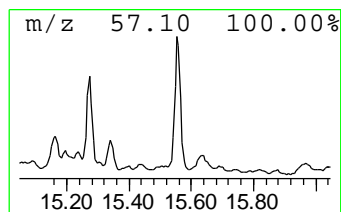
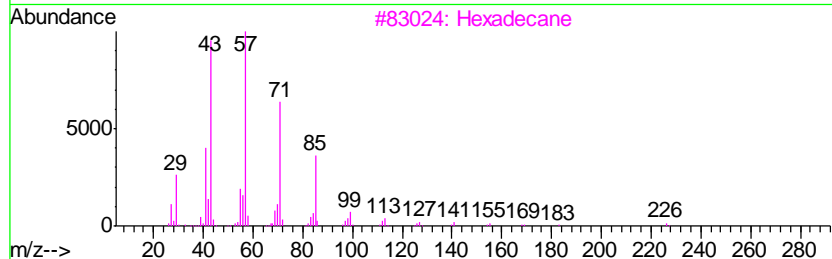
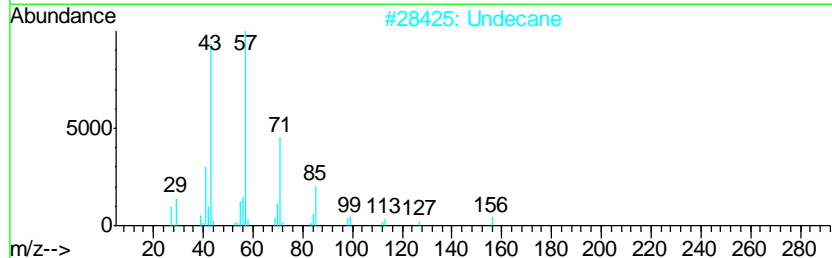
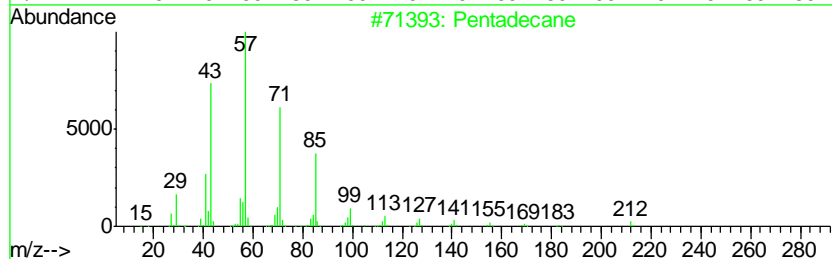
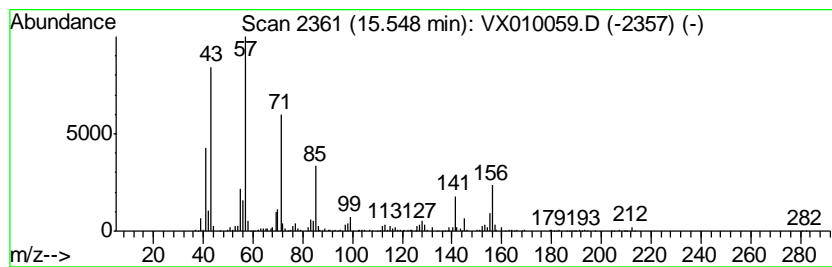
Quant Method : Z:\VOASRV\HPCHEM1\MSVOA_X\METHOD\82X052819W.M
 Quant Title : SW846 8260

TIC Library : C:\DATABASE\NIST11.L
 TIC Integration Parameters: LSCINT.P

 Peak Number 10 Pentadecane Concentration Rank 8

R.T.	EstConc	Area	Relative to ISTD	R.T.
15.55	22.57 ug/l	322493	1,4-Dichlorobenzene-d4	12.07

Hit#	of	Tentative ID	MW	MolForm	CAS#	Qual
1	5	Pentadecane	212	C15H32	000629-62-9	95
2		Undecane	156	C11H24	001120-21-4	74
3		Hexadecane	226	C16H34	000544-76-3	72
4		Tetradecane	198	C14H30	000629-59-4	72
5		Tridecane	184	C13H28	000629-50-5	64



Data Path : Z:\VOASRV\HPCHEM1\MSVOA_X\DATA\VX060419\
 Data File : VX010059.D
 Acq On : 04 Jun 2019 15:39
 Operator : JC/SP
 Sample : K3178-01 100X
 Misc : 5.0mL/MSVOA_X/WATER
 ALS Vial : 10 Sample Multiplier: 1

Instrument :
 MSVOA_X
 ClientSampleId :
 40061

Quant Method : Z:\VOASRV\HPCHEM1\MSVOA_X\METHOD\82X052819W.M
 Quant Title : SW846 8260

TIC Library : C:\DATABASE\NIST11.L
 TIC Integration Parameters: LSCINT.P

TIC Top Hit name	RT	EstConc	Units	Response	--Internal Standard--			
					#	RT	Resp	Conc
n-Propyl acetate	7.87	845.1	ug/l	10511800	2	6.85	621909	50.0
1-Isobutoxy-2-eth...	12.27	55.4	ug/l	790859	4	12.07	714468	50.0
Dodecane	13.32	21.0	ug/l	300587	4	12.07	714468	50.0
Cyclohexane, 1-me...	13.65	41.6	ug/l	593879	4	12.07	714468	50.0
Decane, 2-methyl-	13.90	22.7	ug/l	324231	4	12.07	714468	50.0
Tridecane	14.09	36.4	ug/l	520374	4	12.07	714468	50.0
Naphthalene, 1,2,...	14.28	14.8	ug/l	211502	4	12.07	714468	50.0
Hexadecane, 2,6,1...	14.67	26.5	ug/l	378371	4	12.07	714468	50.0
Tetradecane	14.81	43.7	ug/l	624962	4	12.07	714468	50.0
Pentadecane	15.55	22.6	ug/l	322493	4	12.07	714468	50.0