

Data Path : Z:\VOASRV\HPCHEM1\MSVOA X\DATA\VX060519\  
 Data File : VX010086.D  
 Acq On : 05 Jun 2019 18:48  
 Operator : JC/SP  
 Sample : K3190-15 10X  
 Misc : 5.0mL/MSVOA X/WATER  
 ALS Vial : 23 Sample Multiplier: 1

**Instrument :**  
 MSVOA\_X  
**ClientSampleId :**  
 BPS1-TT-MW304S-20190604

Quant Time: Jun 06 07:16:58 2019  
 Quant Method : Z:\VOASRV\HPCHEM1\MSVOA\_X\METHOD\82X052819W.M  
 Quant Title : SW846 8260  
 QLast Update : Wed May 29 04:00:56 2019  
 Response via : Initial Calibration

Internal Standards	R.T.	QIon	Response	Conc	Units	Dev(Min)
1) Pentafluorobenzene	5.67	168	178970	50.00	ug/l	0.00
34) 1,4-Difluorobenzene	6.86	114	285036	50.00	ug/l	0.00
63) Chlorobenzene-d5	10.12	117	257507	50.00	ug/l	0.00
72) 1,4-Dichlorobenzene-d4	12.08	152	114322	50.00	ug/l	0.00
System Monitoring Compounds						
33) 1,2-Dichloroethane-d4	6.06	65	116820	46.21	ug/l	0.00
Spiked Amount	50.000		Recovery	=	92.42%	
35) Dibromofluoromethane	5.50	113	87274	48.70	ug/l	0.00
Spiked Amount	50.000		Recovery	=	97.40%	
50) Toluene-d8	8.71	98	362037	49.75	ug/l	0.00
Spiked Amount	50.000		Recovery	=	99.50%	
62) 4-Bromofluorobenzene	11.13	95	122354	46.81	ug/l	0.00
Spiked Amount	50.000		Recovery	=	93.62%	

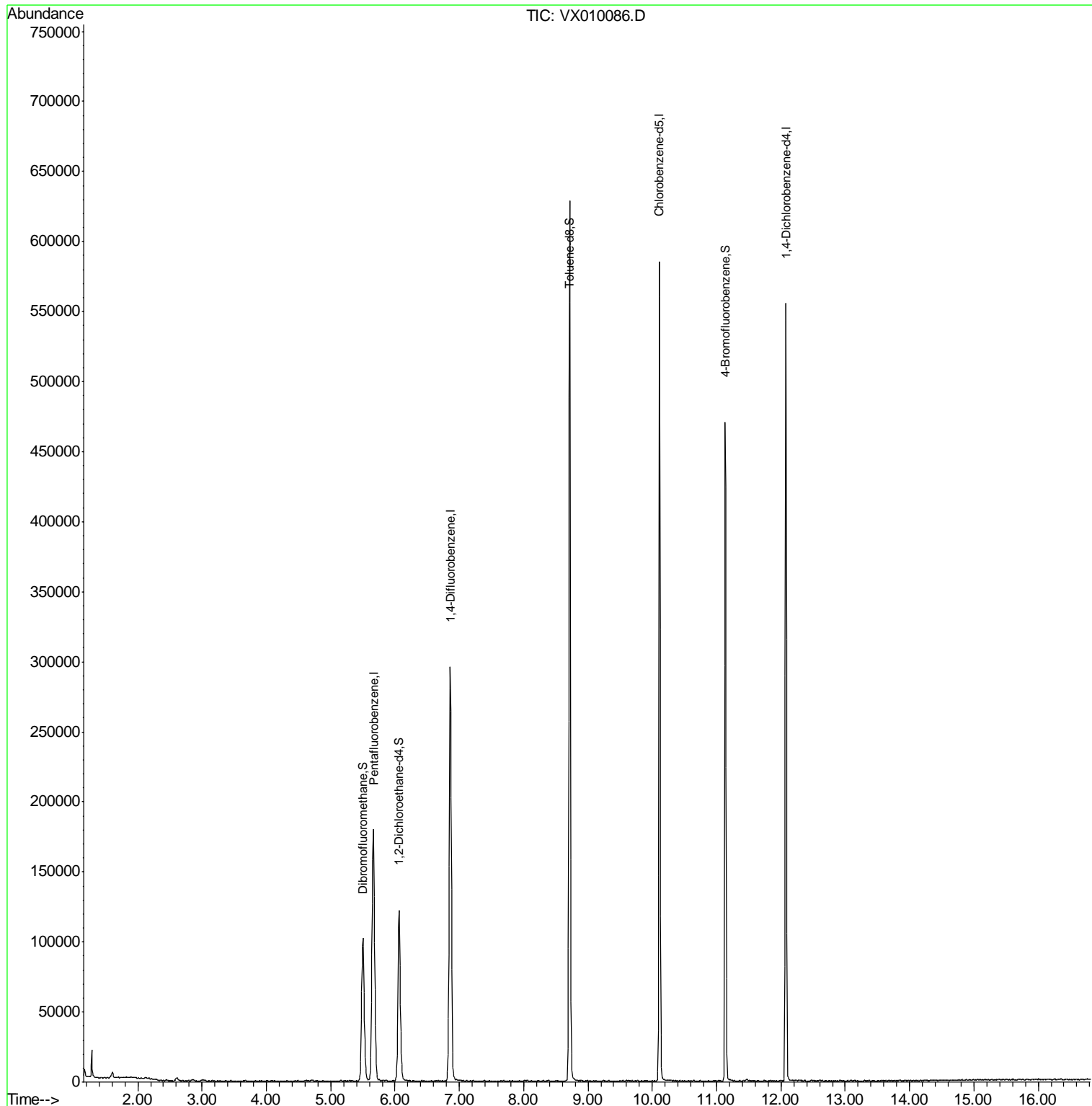
Target Compounds Qvalue  
 -----

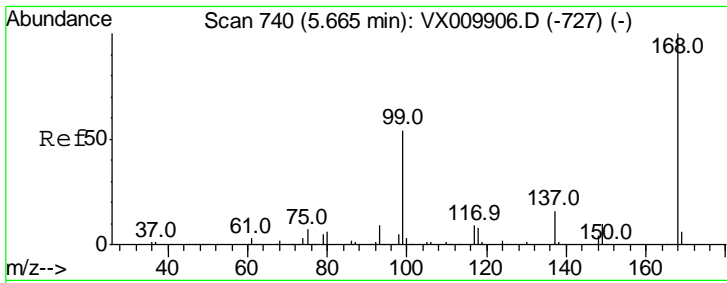
(#) = qualifier out of range (m) = manual integration (+) = signals summed

Data Path : Z:\VOASRV\HPCHEM1\MSVOA X\DATA\VX060519\  
 Data File : VX010086.D  
 Acq On : 05 Jun 2019 18:48  
 Operator : JC/SP  
 Sample : K3190-15 10X  
 Misc : 5.0mL/MSVOA X/WATER  
 ALS Vial : 23 Sample Multiplier: 1

**Instrument :**  
 MSVOA\_X  
**ClientSampleId :**  
 BPS1-TT-MW304S-20190604

Quant Time: Jun 06 07:16:58 2019  
 Quant Method : Z:\VOASRV\HPCHEM1\MSVOA\_X\METHOD\82X052819W.M  
 Quant Title : SW846 8260  
 QLast Update : Wed May 29 04:00:56 2019  
 Response via : Initial Calibration

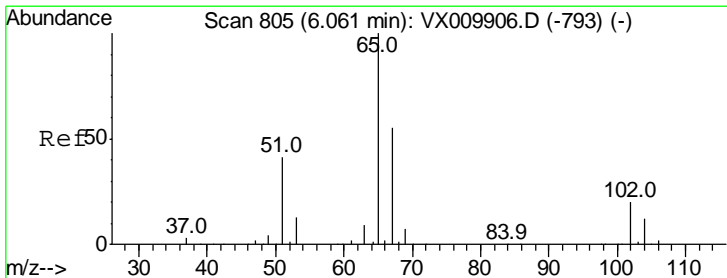
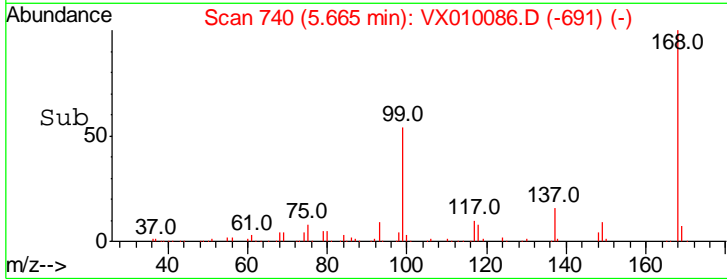
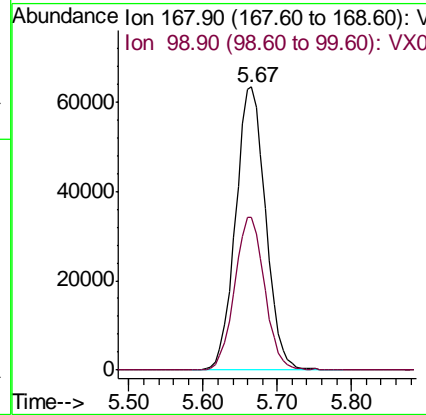
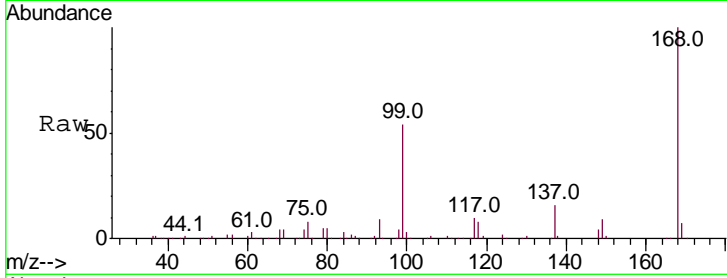




#1  
 Pentafluorobenzene  
 Concen: 50.000 ug/l  
 RT: 5.67 min Scan# 740  
 Delta R.T. 0.00 min  
 Lab File: VX010086.D  
 Acq: 05 Jun 2019 18:48

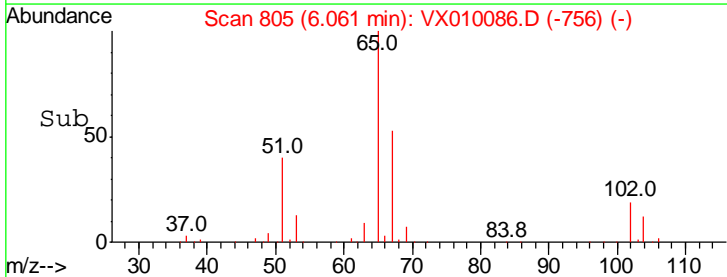
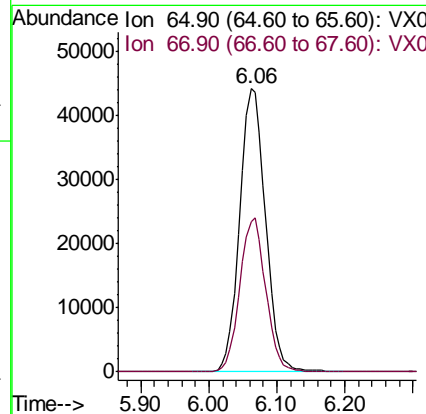
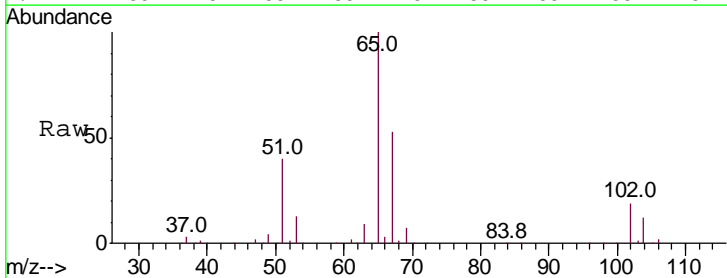
Instrument :  
 MSVOA\_X  
 ClientSampleId :  
 BPS1-TT-MW304S-20190604

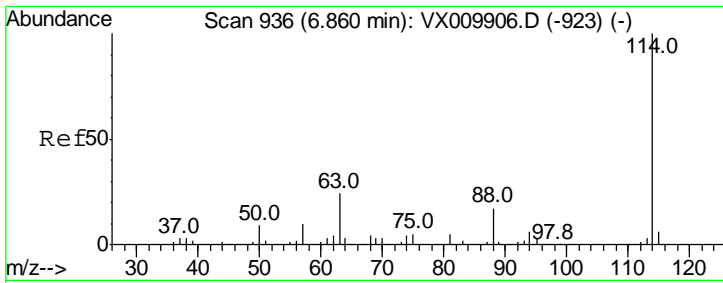
Tgt Ion: 168 Resp: 178970  
 Ion Ratio Lower Upper  
 168 100  
 99 54.0 43.0 64.6



#33  
 1,2-Dichloroethane-d4  
 Concen: 46.209 ug/l  
 RT: 6.06 min Scan# 805  
 Delta R.T. 0.00 min  
 Lab File: VX010086.D  
 Acq: 05 Jun 2019 18:48

Tgt Ion: 65 Resp: 116820  
 Ion Ratio Lower Upper  
 65 100  
 67 54.4 0.0 108.4

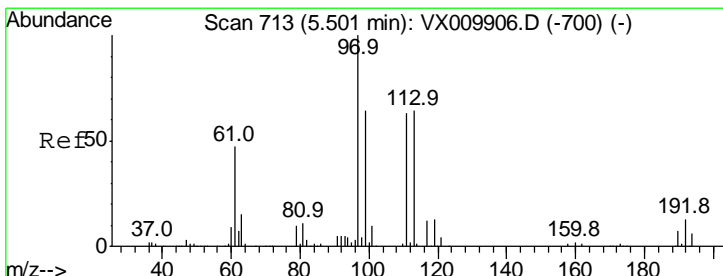
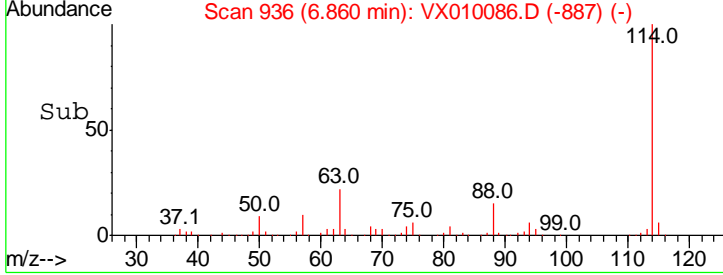
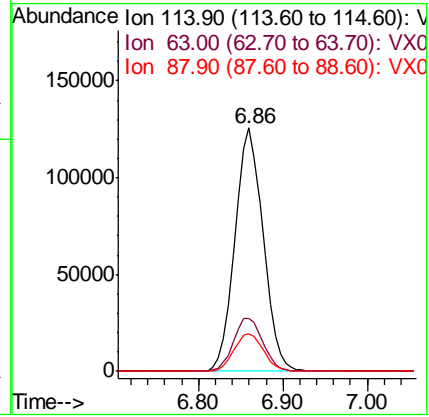
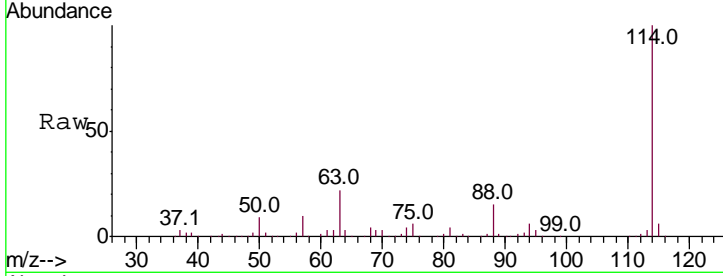




#34  
 1,4-Difluorobenzene  
 Concen: 50.000 ug/l  
 RT: 6.86 min Scan# 936  
 Delta R.T. 0.00 min  
 Lab File: VX010086.D  
 Acq: 05 Jun 2019 18:48

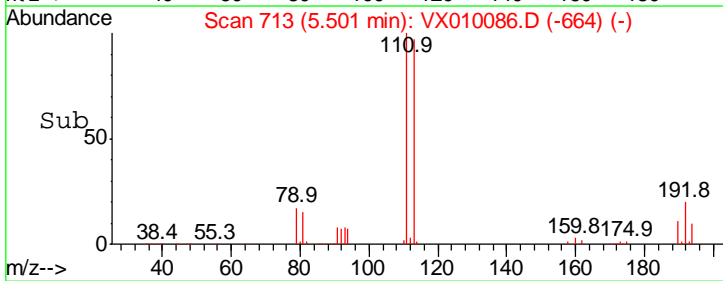
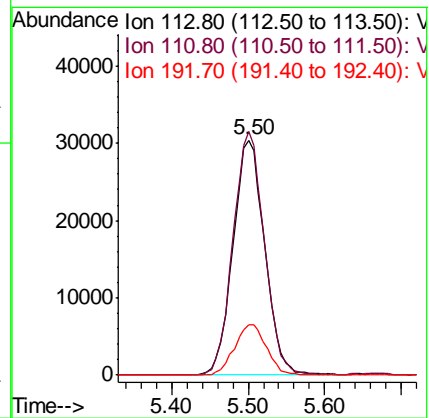
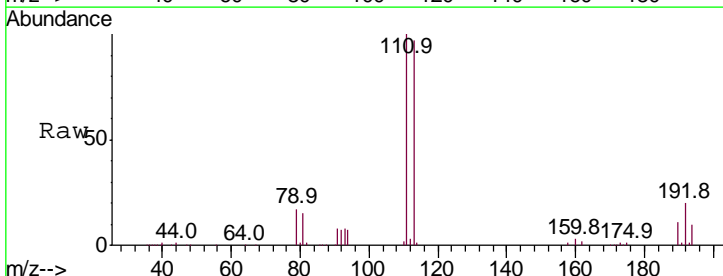
Instrument :  
 MSVOA\_X  
 ClientSampleID :  
 BPS1-TT-MW304S-20190604

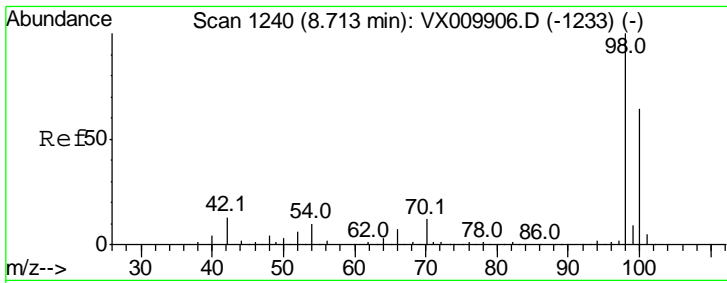
Tgt Ion	Resp	Lower	Upper
114	100		
63	21.9	0.0	47.4
88	15.5	0.0	33.0



#35  
 Dibromofluoromethane  
 Concen: 48.701 ug/l  
 RT: 5.50 min Scan# 713  
 Delta R.T. 0.00 min  
 Lab File: VX010086.D  
 Acq: 05 Jun 2019 18:48

Tgt Ion	Resp	Lower	Upper
113	100		
111	102.0	82.2	123.2
192	21.7	17.1	25.7

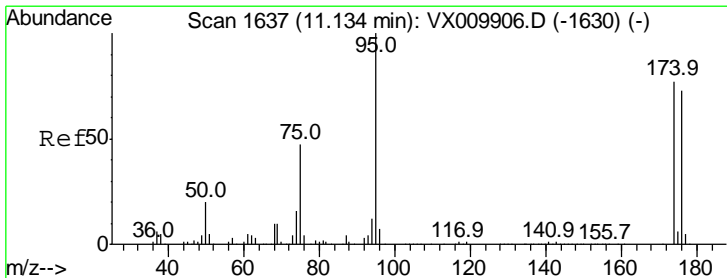
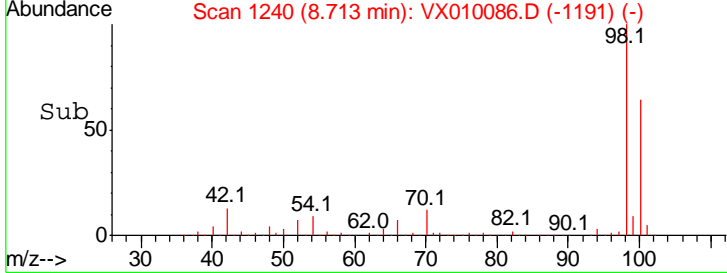
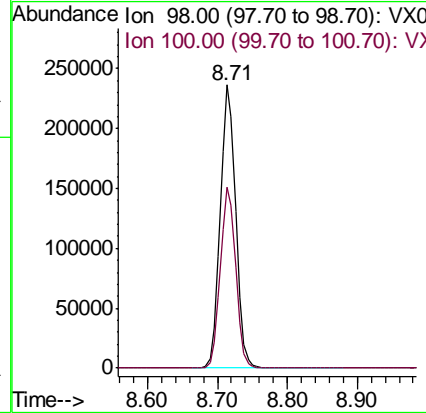
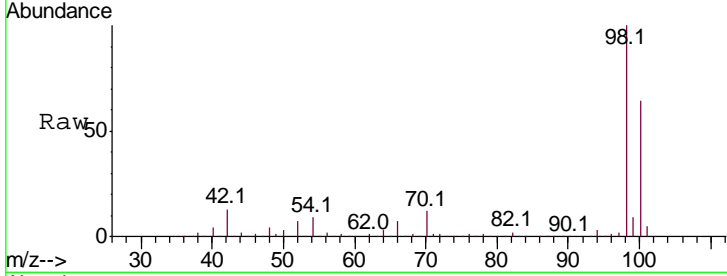




#50  
 Toluene-d8  
 Concen: 49.751 ug/l  
 RT: 8.71 min Scan# 1240  
 Delta R.T. 0.00 min  
 Lab File: VX010086.D  
 Acq: 05 Jun 2019 18:48

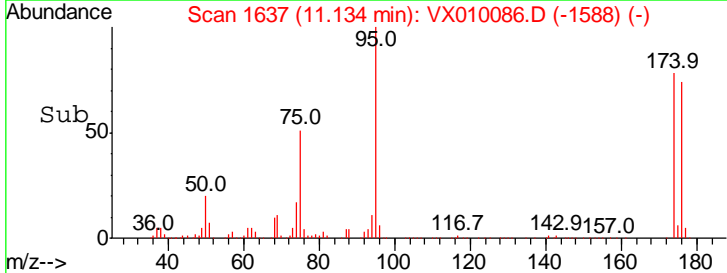
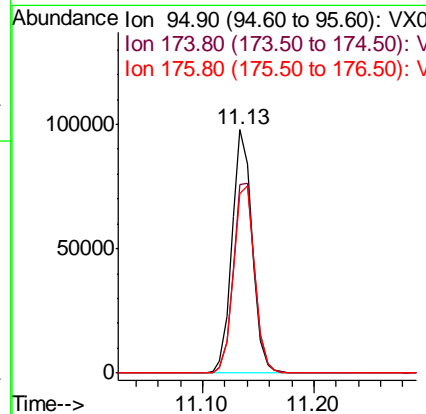
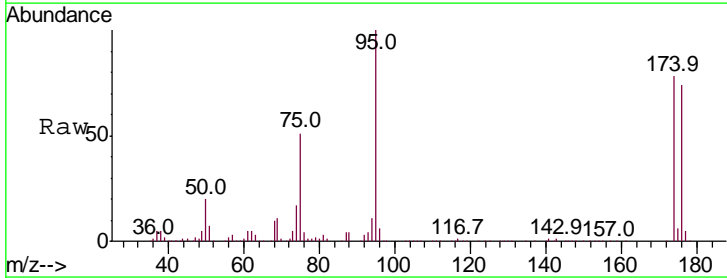
Instrument :  
 MSVOA\_X  
 ClientSampled :  
 BPS1-TT-MW304S-20190604

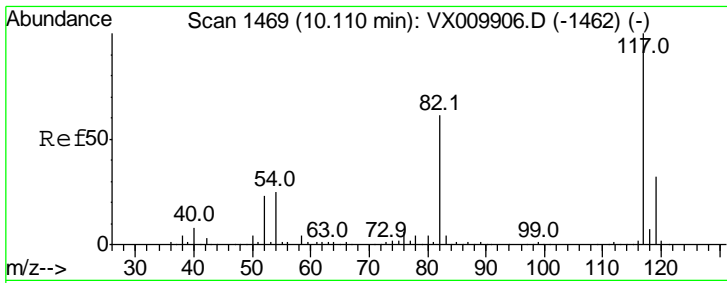
Tgt Ion: 98 Resp: 362037  
 Ion Ratio Lower Upper  
 98 100  
 100 63.9 51.5 77.3



#62  
 4-Bromofluorobenzene  
 Concen: 46.811 ug/l  
 RT: 11.13 min Scan# 1637  
 Delta R.T. 0.00 min  
 Lab File: VX010086.D  
 Acq: 05 Jun 2019 18:48

Tgt Ion: 95 Resp: 122354  
 Ion Ratio Lower Upper  
 95 100  
 174 82.7 0.0 160.4  
 176 80.8 0.0 154.6

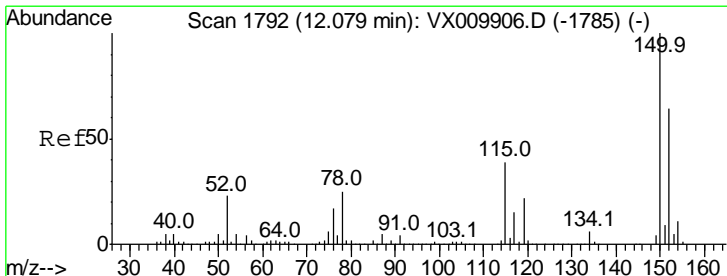
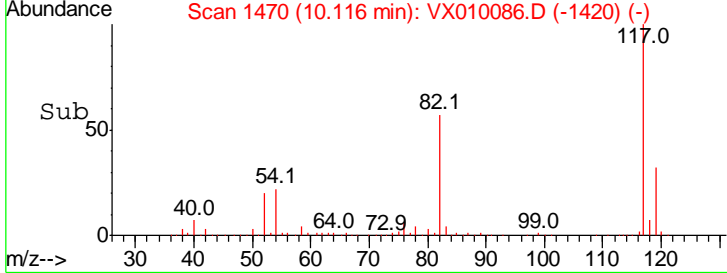
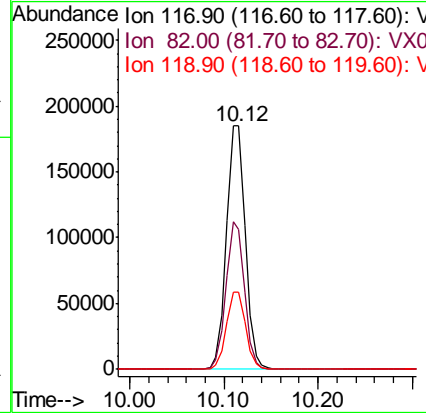
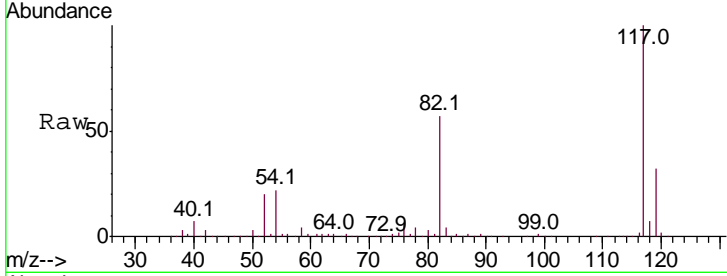




#63  
 Chlorobenzene-d5  
 Concen: 50.000 ug/l  
 RT: 10.12 min Scan# 1470  
 Delta R.T. 0.01 min  
 Lab File: VX010086.D  
 Acq: 05 Jun 2019 18:48

Instrument :  
 MSVOA\_X  
 ClientSampled :  
 BPS1-TT-MW304S-20190604

Tgt Ion	Resp	Lower	Upper
117	100		
82	57.3	49.2	73.8
119	32.0	25.2	37.8



#72  
 1,4-Dichlorobenzene-d4  
 Concen: 50.000 ug/l  
 RT: 12.08 min Scan# 1792  
 Delta R.T. 0.00 min  
 Lab File: VX010086.D  
 Acq: 05 Jun 2019 18:48

Tgt Ion	Resp	Lower	Upper
152	100		
115	58.0	41.4	124.2
150	156.1	0.0	345.2

