

Data Path : Z:\VOASRV\HPCHEM1\MSVOA X\DATA\VX060519\  
 Data File : VX010075.D  
 Acq On : 05 Jun 2019 14:31  
 Operator : JC/SP  
 Sample : K3190-06  
 Misc : 5.0mL/MSVOA X/WATER  
 ALS Vial : 12 Sample Multiplier: 1

Instrument :  
 MSVOA\_X  
 ClientSampleId :  
 BP-TT-AOC22-MW08-20190603

Integration Parameters: RTEINT.P  
 Integrator: RTE  
 Smoothing : ON Filtering: 5  
 Sampling : 1 Min Area: 3 % of largest Peak  
 Start Thrs: 0.2 Max Peaks: 100  
 Stop Thrs : 0 Peak Location: TOP

If leading or trailing edge < 100 prefer < Baseline drop else tangent >  
 Peak separation: 5

Method : Z:\VOASRV\HPCHEM1\MSVOA\_X\METHOD\82X052819W.M  
 Title : SW846 8260

Signal : TIC

| peak # | R.T. min | first scan | max scan | last scan | PK TY | peak height | corr. area | corr. % max. | % of total |
|--------|----------|------------|----------|-----------|-------|-------------|------------|--------------|------------|
| 1      | 2.611    | 233        | 239      | 247       | rVB   | 13315       | 24197      | 2.49%        | 0.490%     |
| 2      | 3.019    | 299        | 306      | 317       | rBV3  | 3788        | 9786       | 1.01%        | 0.198%     |
| 3      | 5.501    | 702        | 713      | 726       | rBV   | 102749      | 291608     | 29.96%       | 5.907%     |
| 4      | 5.659    | 728        | 739      | 757       | rVB   | 181292      | 513826     | 52.79%       | 10.409%    |
| 5      | 6.062    | 795        | 805      | 818       | rBV   | 123737      | 328241     | 33.72%       | 6.649%     |
| 6      | 6.860    | 924        | 936      | 949       | rBV   | 293626      | 690088     | 70.90%       | 13.979%    |
| 7      | 7.220    | 987        | 995      | 1003      | rBV3  | 5085        | 11135      | 1.14%        | 0.226%     |
| 8      | 8.713    | 1233       | 1240     | 1250      | rBV   | 630173      | 973300     | 100.00%      | 19.716%    |
| 9      | 10.110   | 1463       | 1469     | 1478      | rBV   | 597224      | 800431     | 82.24%       | 16.214%    |
| 10     | 11.134   | 1632       | 1637     | 1646      | rBV   | 472243      | 598029     | 61.44%       | 12.114%    |
| 11     | 12.073   | 1786       | 1791     | 1801      | rBV   | 538284      | 695924     | 71.50%       | 14.097%    |

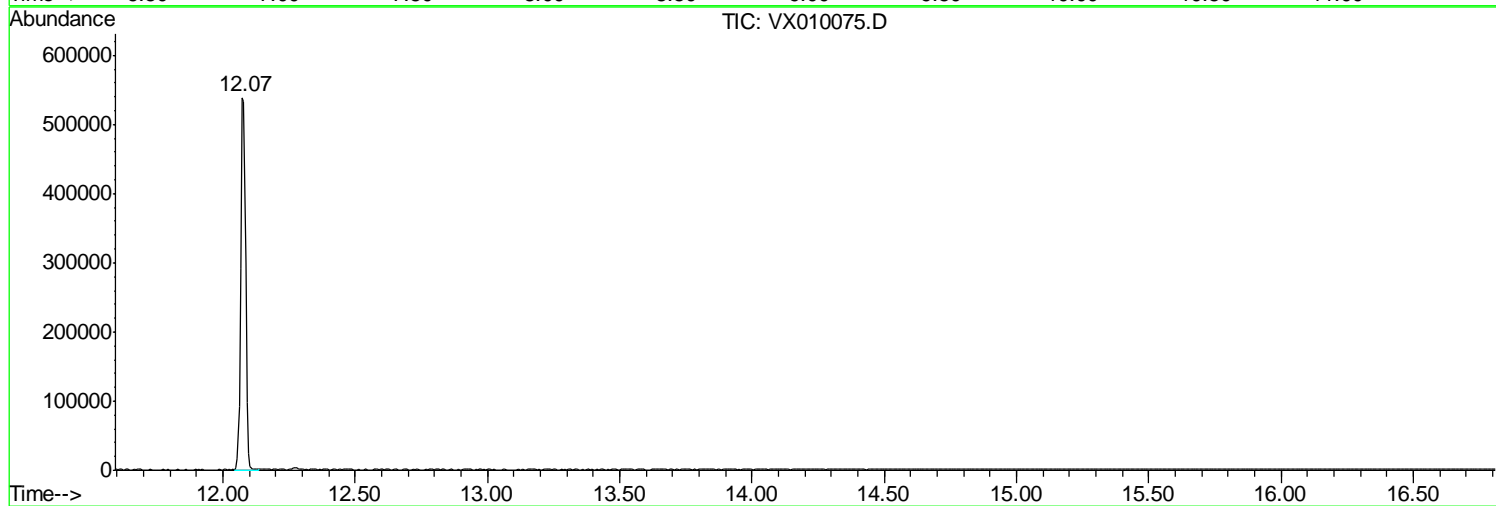
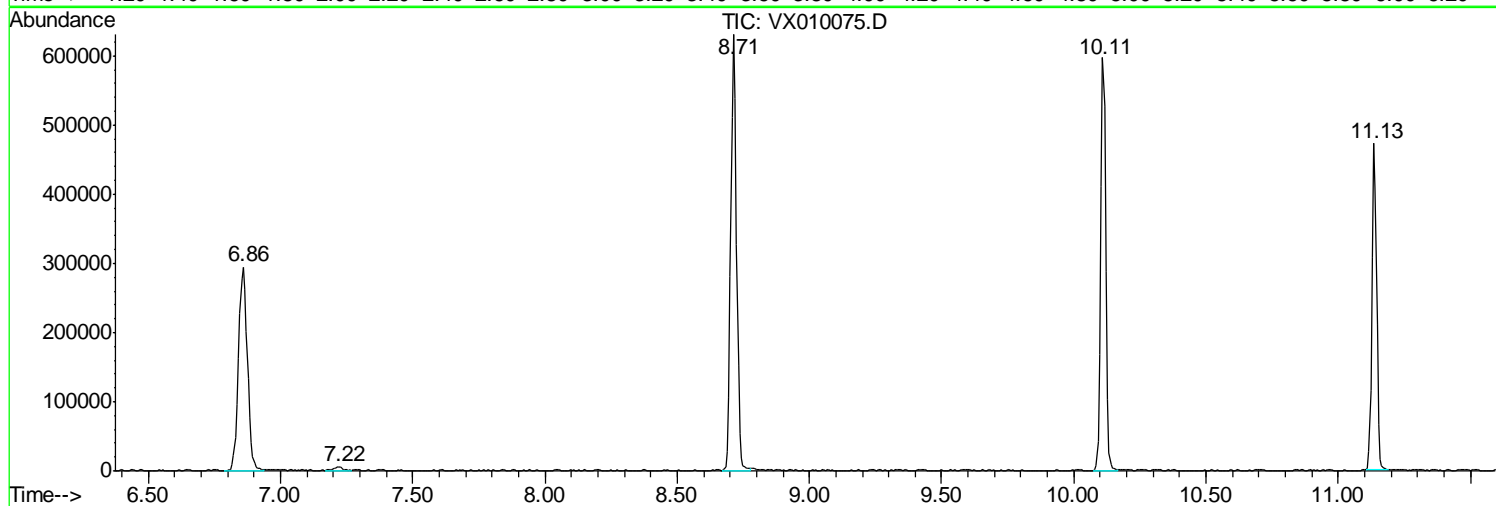
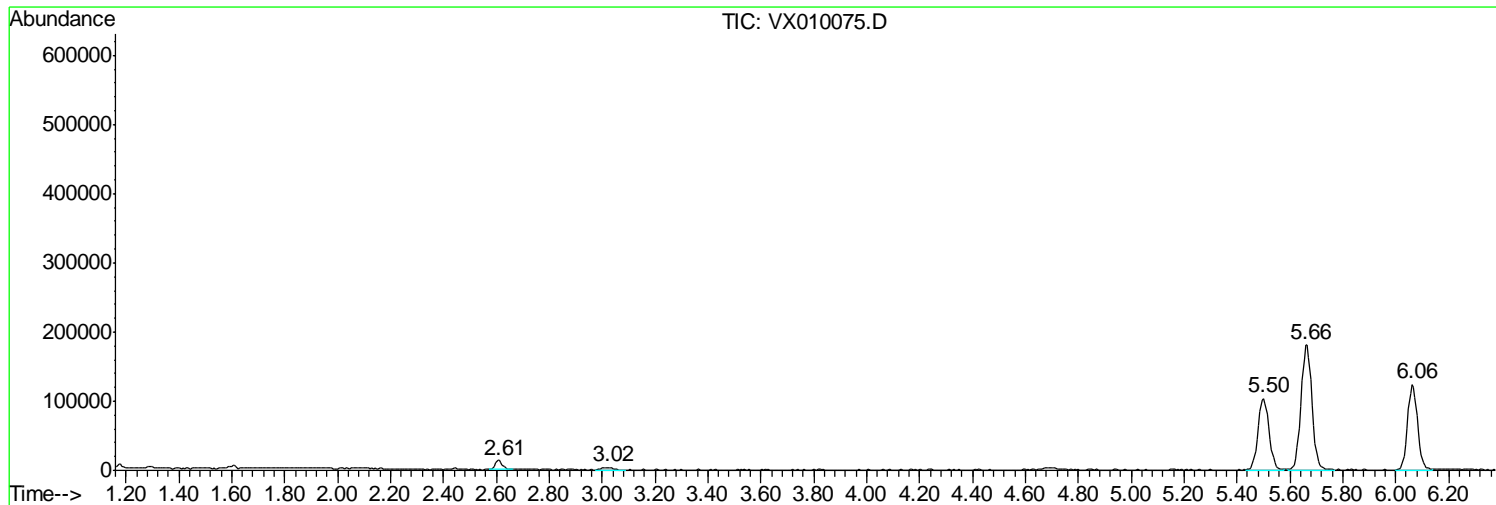
Sum of corrected areas: 4936565

Data Path : Z:\VOASRV\HPCHEM1\MSVOA X\DATA\VX060519\  
Data File : VX010075.D  
Acq On : 05 Jun 2019 14:31  
Operator : JC/SP  
Sample : K3190-06  
Misc : 5.0mL/MSVOA X/WATER  
ALS Vial : 12 Sample Multiplier: 1

Instrument :  
MSVOA\_X  
ClientSampled :  
BP-TT-AOC22-MW08-20190603

Quant Method : Z:\VOASRV\HPCHEM1\MSVOA\_X\METHOD\82X052819W.M  
Quant Title : SW846 8260

TIC Library : C:\DATABASE\NIST11.L  
TIC Integration Parameters: LSCINT.P



Data Path : Z:\VOASRV\HPCHEM1\MSVOA\_X\DATA\VX060519\  
Data File : VX010075.D  
Acq On : 05 Jun 2019 14:31  
Operator : JC/SP  
Sample : K3190-06  
Misc : 5.0mL/MSVOA\_X/WATER  
ALS Vial : 12 Sample Multiplier: 1

**Instrument :**  
MSVOA\_X  
**ClientSampleId :**  
BP-TT-AOC22-MW08-20190603

Quant Method : Z:\VOASRV\HPCHEM1\MSVOA\_X\METHOD\82X052819W.M  
Quant Title : SW846 8260

TIC Library : C:\DATABASE\NIST11.L  
TIC Integration Parameters: LSCINT.P

No Library Search Compounds Detected

\*\*\*\*\*

Data Path : Z:\VOASRV\HPCHEM1\MSVOA\_X\DATA\VX060519\  
Data File : VX010075.D  
Acq On : 05 Jun 2019 14:31  
Operator : JC/SP  
Sample : K3190-06  
Misc : 5.0mL/MSVOA\_X/WATER  
ALS Vial : 12 Sample Multiplier: 1

Instrument :  
MSVOA\_X  
ClientSampleId :  
BP-TT-AOC22-MW08-20190603

Quant Method : Z:\VOASRV\HPCHEM1\MSVOA\_X\METHOD\82X052819W.M  
Quant Title : SW846 8260

TIC Library : C:\DATABASE\NIST11.L  
TIC Integration Parameters: LSCINT.P

| TIC Top Hit name | RT | EstConc | Units | Response | --Internal Standard-- |    |      |      |
|------------------|----|---------|-------|----------|-----------------------|----|------|------|
|                  |    |         |       |          | #                     | RT | Resp | Conc |

---