

Data Path : Z:\VOASRV\HPCHEM1\MSVOA\_X\DATA\VX060520\  
 Data File : VX016624.D  
 Acq On : 05 Jun 2020 20:04  
 Operator : JC/SP  
 Sample : L2926-07  
 Misc : 5.0mL/MSVOA\_X/WATER  
 ALS Vial : 28 Sample Multiplier: 1

Instrument :  
 MSVOA\_X  
 ClientSampleId :  
 DUP-20200604

Quant Time: Jun 06 06:04:04 2020  
 Quant Method : Z:\VOASRV\HPCHEM1\MSVOA\_X\METHOD\82X052720W.M  
 Quant Title : SW846 8260  
 QLast Update : Wed May 27 16:31:05 2020  
 Response via : Initial Calibration

| Internal Standards         | R.T.  | QIon | Response | Conc  | Units | Dev(Min) |
|----------------------------|-------|------|----------|-------|-------|----------|
| 1) Pentafluorobenzene      | 5.64  | 168  | 223752   | 50.00 | ug/l  | 0.00     |
| 34) 1,4-Difluorobenzene    | 6.83  | 114  | 357430   | 50.00 | ug/l  | 0.00     |
| 63) Chlorobenzene-d5       | 10.10 | 117  | 360277   | 50.00 | ug/l  | 0.00     |
| 72) 1,4-Dichlorobenzene-d4 | 12.06 | 152  | 185442   | 50.00 | ug/l  | 0.00     |

| System Monitoring Compounds | R.T.  | QIon | Response | Conc   | Units   | Dev(Min) |
|-----------------------------|-------|------|----------|--------|---------|----------|
| 33) 1,2-Dichloroethane-d4   | 6.03  | 65   | 136830   | 49.24  | ug/l    | 0.00     |
| Spiked Amount               |       |      |          | 50.000 |         |          |
| Recovery                    |       |      |          | =      | 98.48%  |          |
| 35) Dibromofluoromethane    | 5.46  | 113  | 110492   | 50.20  | ug/l    | 0.00     |
| Spiked Amount               |       |      |          | 50.000 |         |          |
| Recovery                    |       |      |          | =      | 100.40% |          |
| 50) Toluene-d8              | 8.70  | 98   | 447047   | 52.19  | ug/l    | 0.00     |
| Spiked Amount               |       |      |          | 50.000 |         |          |
| Recovery                    |       |      |          | =      | 104.38% |          |
| 62) 4-Bromofluorobenzene    | 11.12 | 95   | 177282   | 53.56  | ug/l    | 0.00     |
| Spiked Amount               |       |      |          | 50.000 |         |          |
| Recovery                    |       |      |          | =      | 107.12% |          |

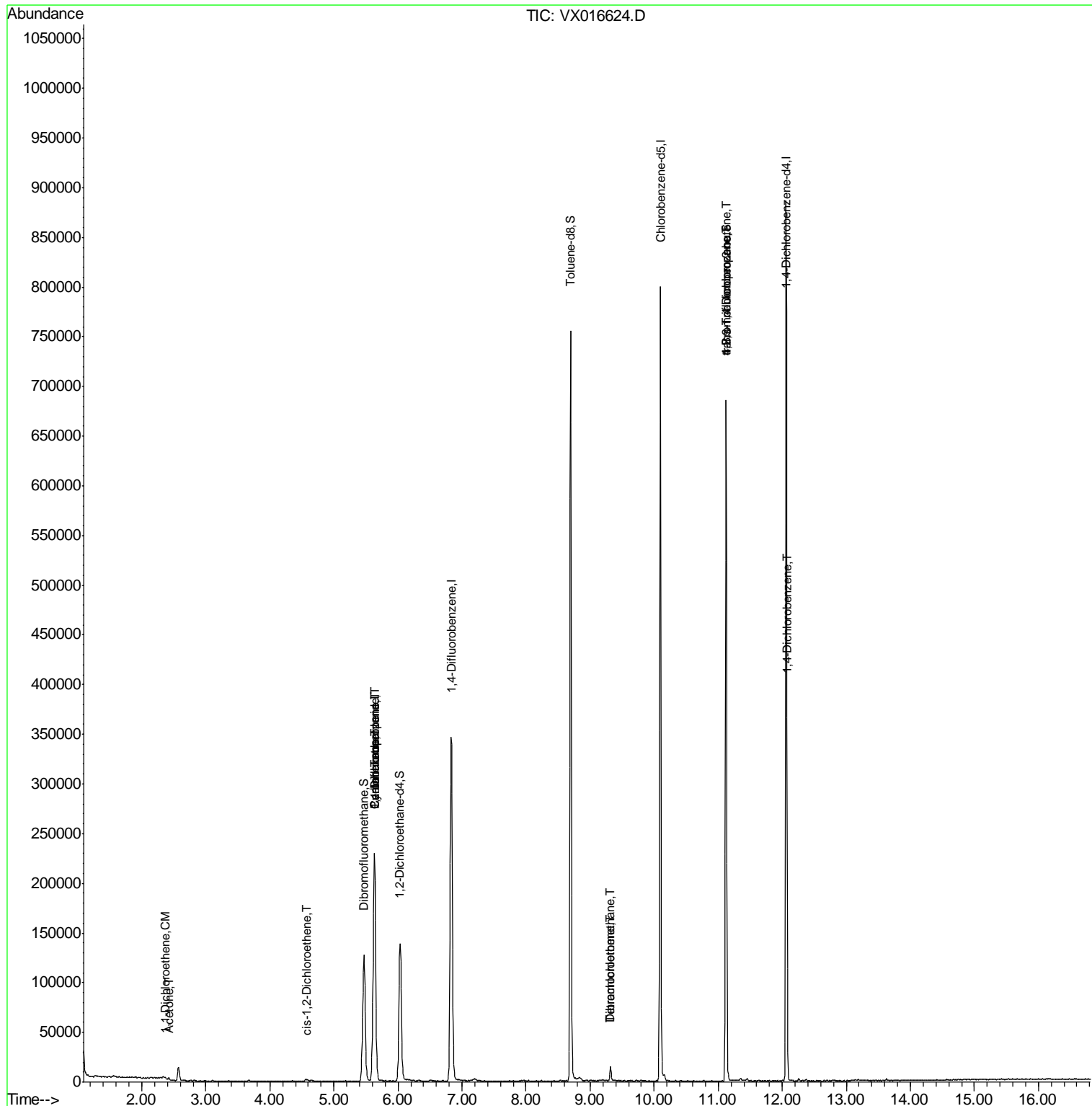
| Target Compounds               | R.T.  | QIon | Response | Conc  | Units  | Qvalue |
|--------------------------------|-------|------|----------|-------|--------|--------|
| 12) 1,1-Dichloroethene         | 2.36  | 96   | 448      | 0.21  | ug/l # | 16     |
| 16) Acetone                    | 2.42  | 43   | 2408     | 1.98  | ug/l   | 99     |
| 27) cis-1,2-Dichloroethene     | 4.57  | 96   | 1353     | 0.49  | ug/l   | 75     |
| 31) Cyclohexane                | 5.64  | 56   | 3997     | 1.03  | ug/l # | 1      |
| 36) 1,1-Dichloropropene        | 5.64  | 75   | 15927    | 4.71  | ug/l # | 50     |
| 38) Carbon Tetrachloride       | 5.63  | 117  | 22339    | 6.28  | ug/l # | 16     |
| 60) Dibromochloromethane       | 9.32  | 129  | 2509     | 0.88  | ug/l # | 11     |
| 64) Tetrachloroethene          | 9.32  | 164  | 2633     | 0.65  | ug/l   | 88     |
| 76) 1,2,3-Trichloropropane     | 11.12 | 75   | 87138    | 21.38 | ug/l # | 35     |
| 81) trans-1,4-Dichloro-2-buten | 11.12 | 75   | 87138    | 52.59 | ug/l # | 14     |
| 88) 1,4-Dichlorobenzene        | 12.08 | 146  | 1263     | 0.21  | ug/l # | 1      |

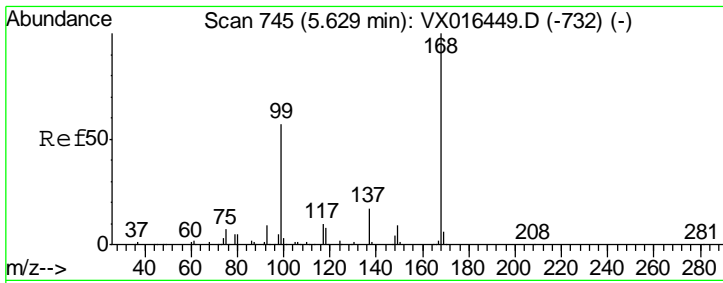
(#) = qualifier out of range (m) = manual integration (+) = signals summed

Data Path : Z:\VOASRV\HPCHEM1\MSVOA\_X\DATA\VX060520\  
 Data File : VX016624.D  
 Acq On : 05 Jun 2020 20:04  
 Operator : JC/SP  
 Sample : L2926-07  
 Misc : 5.0mL/MSVOA\_X/WATER  
 ALS Vial : 28 Sample Multiplier: 1

Instrument :  
 MSVOA\_X  
 Client Sampled :  
 DUP-20200604

Quant Time: Jun 06 06:04:04 2020  
 Quant Method : Z:\VOASRV\HPCHEM1\MSVOA\_X\METHOD\82X052720W.M  
 Quant Title : SW846 8260  
 QLast Update : Wed May 27 16:31:05 2020  
 Response via : Initial Calibration

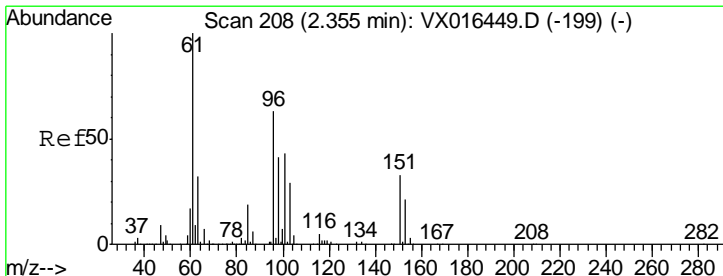
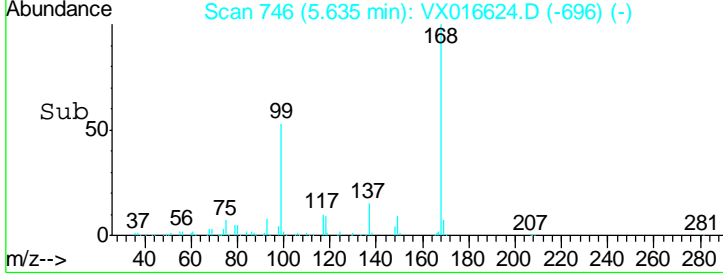
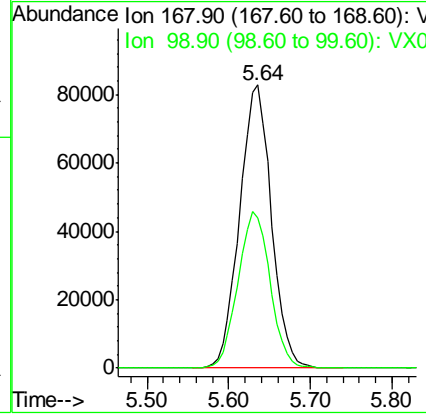
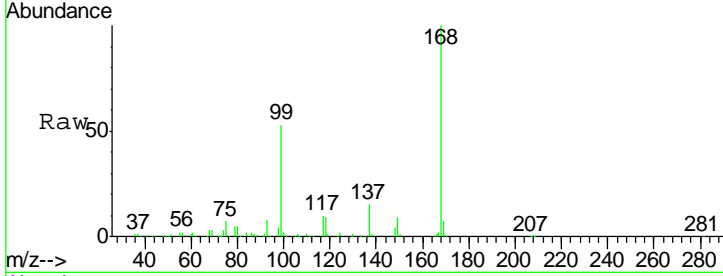




#1  
 Pentafluorobenzene  
 Concen: 50.00 ug/l  
 RT: 5.64 min Scan# 746  
 Delta R.T. 0.01 min  
 Lab File: VX016624.D  
 Acq: 05 Jun 2020 20:04

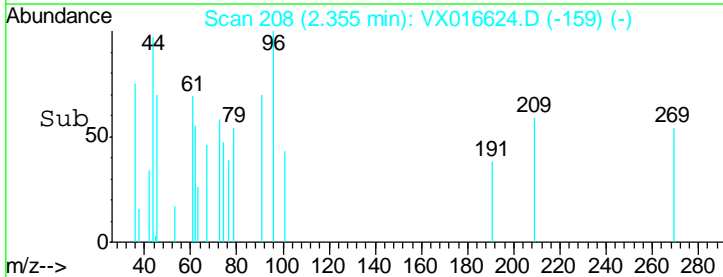
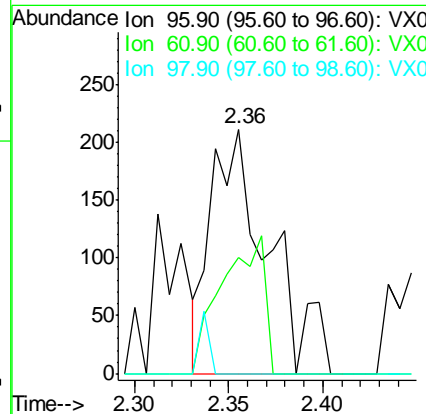
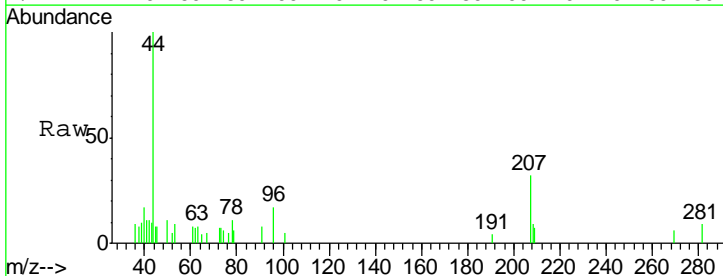
**Instrument :**  
 MSVOA\_X  
**ClientSampled :**  
 DUP-20200604

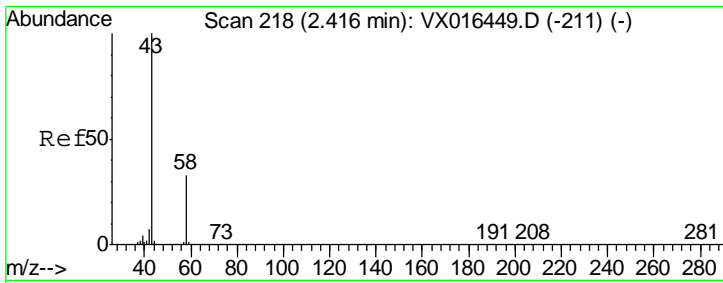
| Tgt Ion | Resp | Lower | Upper |
|---------|------|-------|-------|
| 168     | 100  |       |       |
| 99      | 53.0 | 45.2  | 67.8  |



#12  
 1,1-Dichloroethene  
 Concen: 0.21 ug/l  
 RT: 2.36 min Scan# 208  
 Delta R.T. -0.00 min  
 Lab File: VX016624.D  
 Acq: 05 Jun 2020 20:04

| Tgt Ion | Resp | Lower | Upper  |
|---------|------|-------|--------|
| 96      | 100  |       |        |
| 61      | 47.4 | 126.6 | 189.8# |
| 98      | 0.0  | 51.3  | 76.9#  |

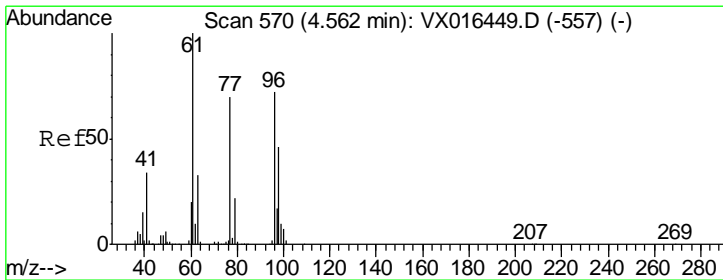
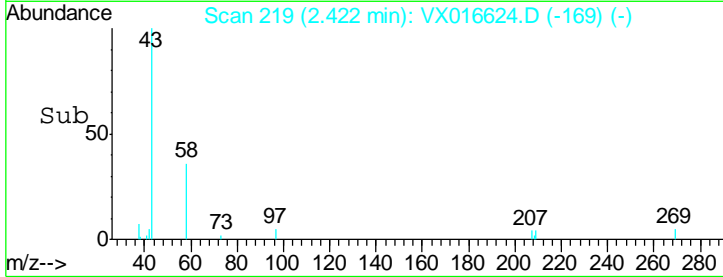
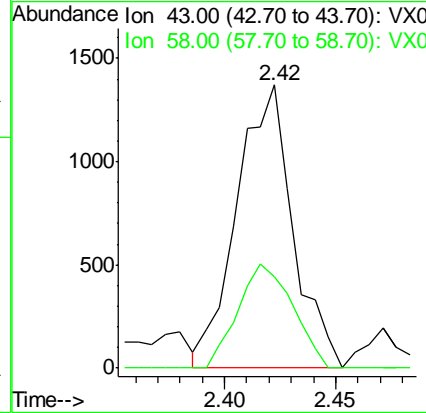
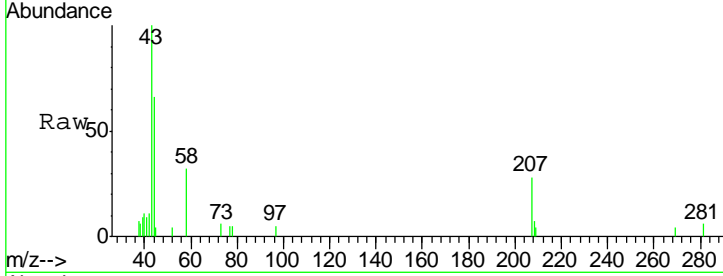




#16  
 Acetone  
 Concen: 1.98 ug/l  
 RT: 2.42 min Scan# 219  
 Delta R.T. 0.01 min  
 Lab File: VX016624.D  
 Acq: 05 Jun 2020 20:04

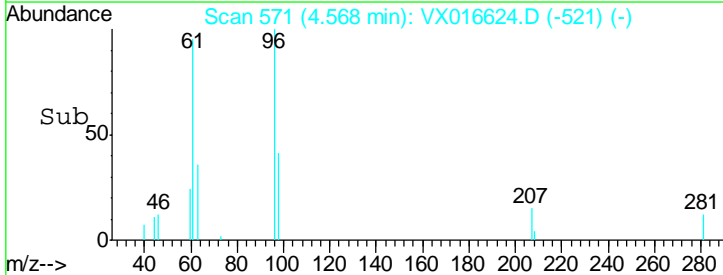
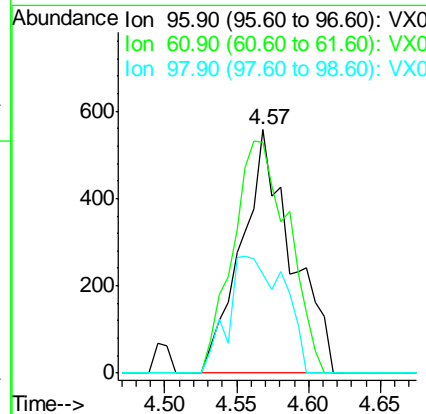
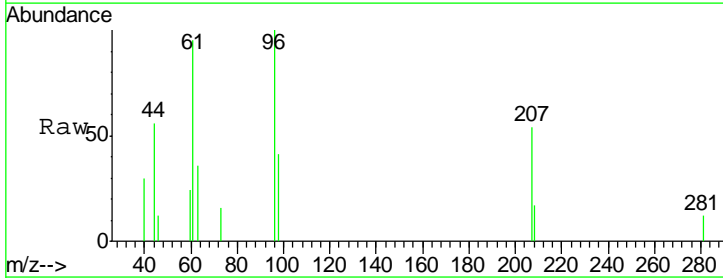
**Instrument :**  
 MSVOA\_X  
**ClientSampled :**  
 DUP-20200604

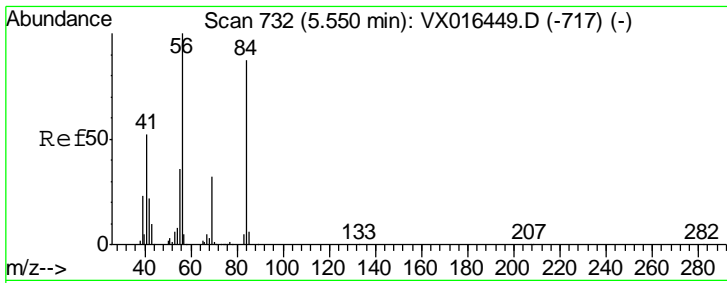
| Tgt Ion | Resp | Lower | Upper |
|---------|------|-------|-------|
| 43      | 100  |       |       |
| 58      | 32.1 | 26.1  | 39.1  |



#27  
 cis-1,2-Dichloroethene  
 Concen: 0.49 ug/l  
 RT: 4.57 min Scan# 571  
 Delta R.T. 0.01 min  
 Lab File: VX016624.D  
 Acq: 05 Jun 2020 20:04

| Tgt Ion | Resp  | Lower | Upper |
|---------|-------|-------|-------|
| 96      | 100   |       |       |
| 61      | 105.3 | 0.0   | 284.6 |
| 98      | 53.4  | 0.0   | 127.2 |

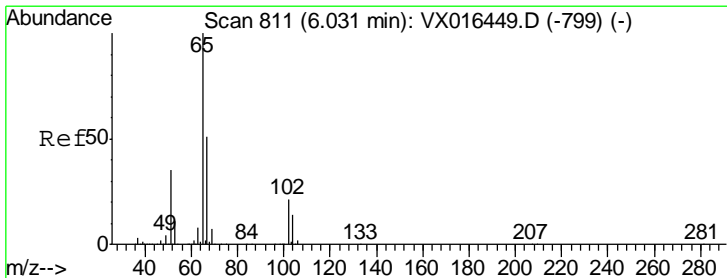
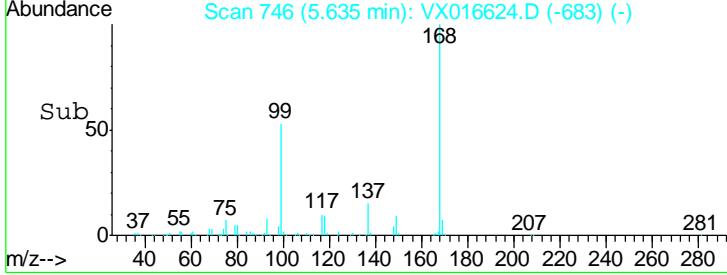
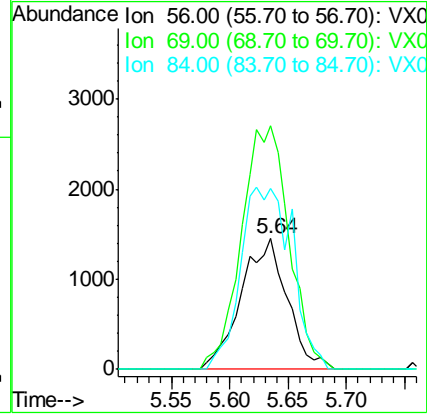
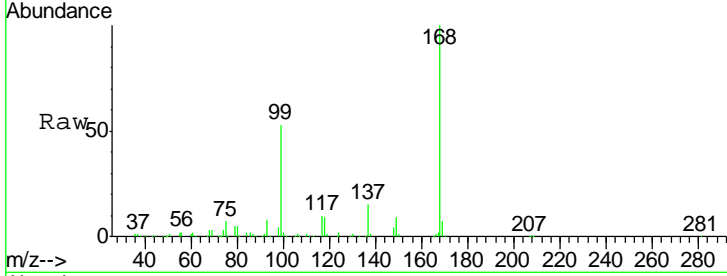




#31  
 Cyclohexane  
 Concen: 1.03 ug/l  
 RT: 5.64 min Scan# 746  
 Delta R.T. 0.09 min  
 Lab File: VX016624.D  
 Acq: 05 Jun 2020 20:04

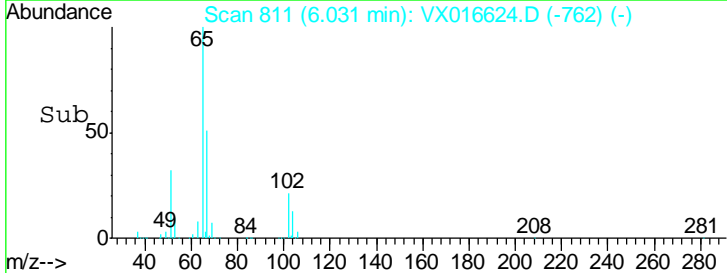
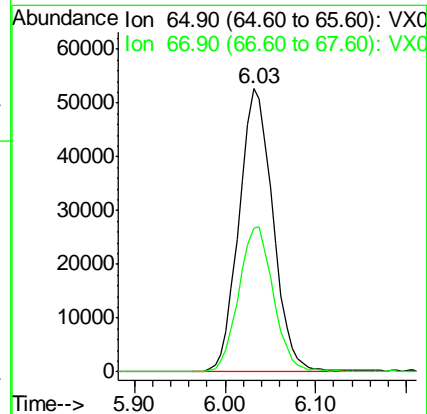
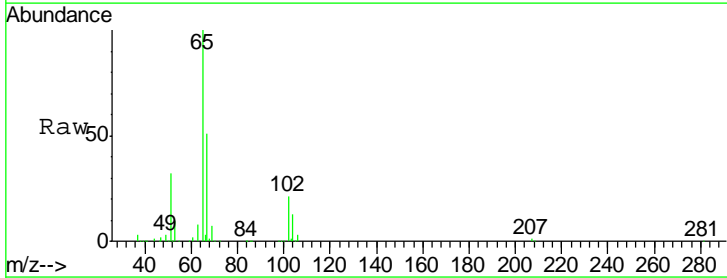
Instrument :  
 MSVOA\_X  
 ClientSampled :  
 DUP-20200604

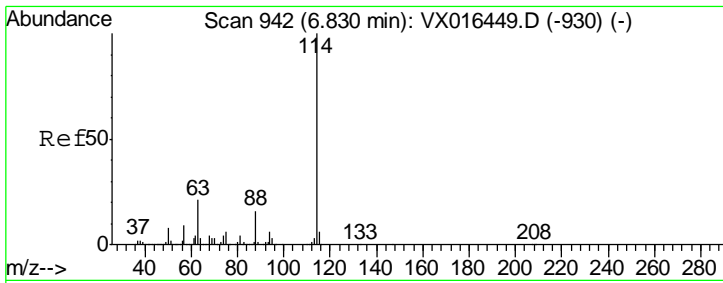
| Tgt Ion | Resp  | Lower | Upper  |
|---------|-------|-------|--------|
| 56      | 100   |       |        |
| 69      | 186.7 | 25.7  | 38.5#  |
| 84      | 138.8 | 70.0  | 105.0# |



#33  
 1,2-Dichloroethane-d4  
 Concen: 49.24 ug/l  
 RT: 6.03 min Scan# 811  
 Delta R.T. -0.00 min  
 Lab File: VX016624.D  
 Acq: 05 Jun 2020 20:04

| Tgt Ion | Resp | Lower | Upper |
|---------|------|-------|-------|
| 65      | 100  |       |       |
| 67      | 52.2 | 0.0   | 104.8 |

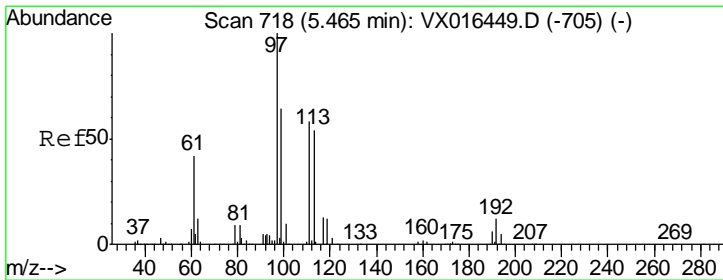
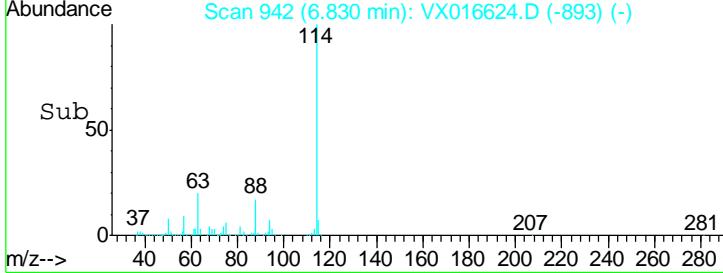
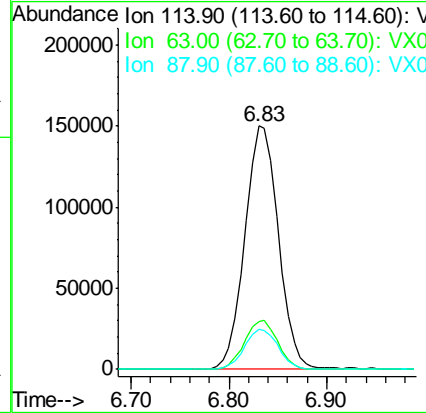
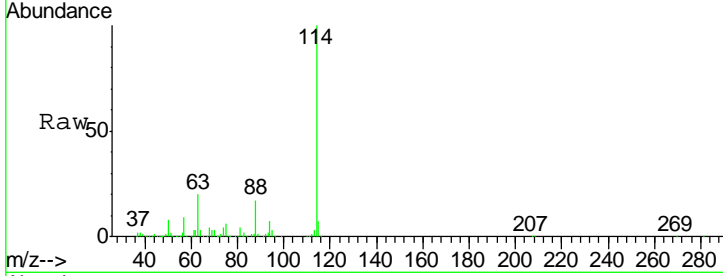




#34  
 1,4-Difluorobenzene  
 Concen: 50.00 ug/l  
 RT: 6.83 min Scan# 942  
 Delta R.T. -0.00 min  
 Lab File: VX016624.D  
 Acq: 05 Jun 2020 20:04

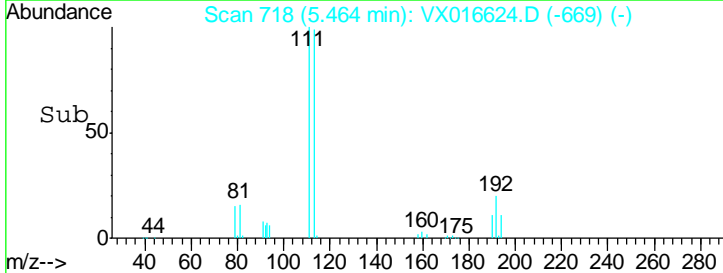
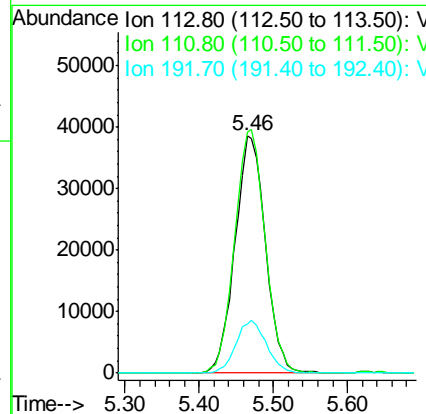
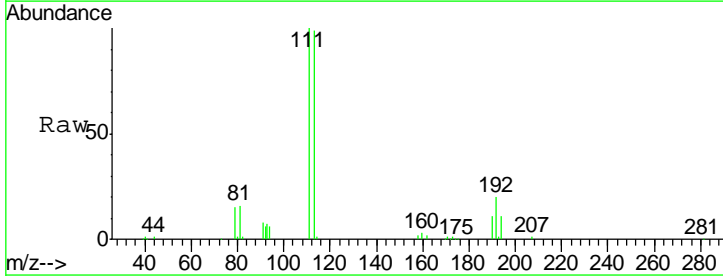
Instrument : MSVOA\_X  
 ClientSampleId : DUP-20200604

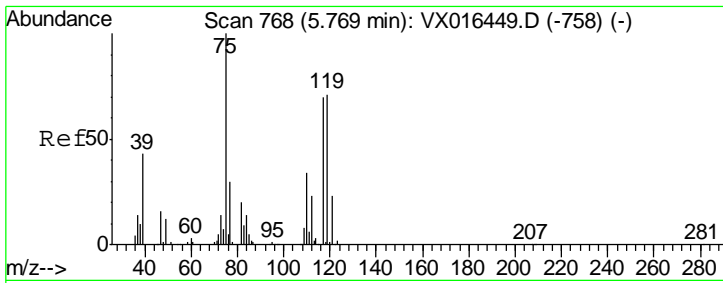
| Tgt Ion | Resp   | Lower | Upper |
|---------|--------|-------|-------|
| 114     | 357430 |       |       |
| 63      | 19.7   | 0.0   | 42.6  |
| 88      | 16.6   | 0.0   | 32.8  |



#35  
 Dibromofluoromethane  
 Concen: 50.20 ug/l  
 RT: 5.46 min Scan# 718  
 Delta R.T. -0.00 min  
 Lab File: VX016624.D  
 Acq: 05 Jun 2020 20:04

| Tgt Ion | Resp   | Lower | Upper |
|---------|--------|-------|-------|
| 113     | 110492 |       |       |
| 111     | 103.0  | 83.0  | 124.6 |
| 192     | 22.2   | 17.7  | 26.5  |

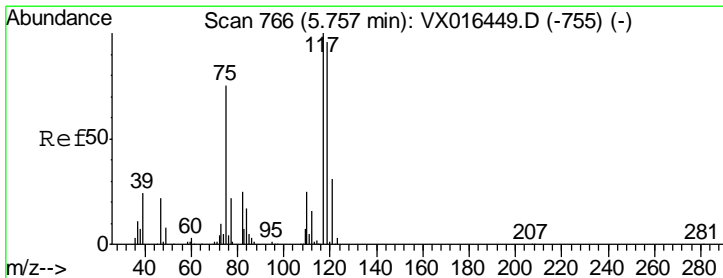
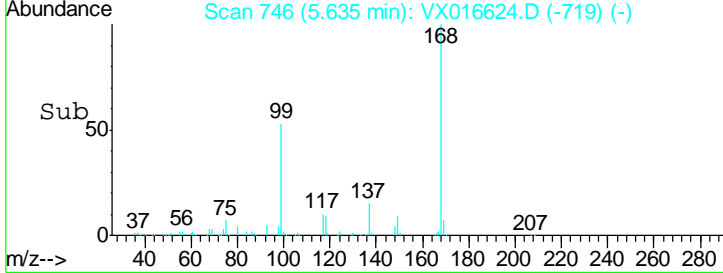
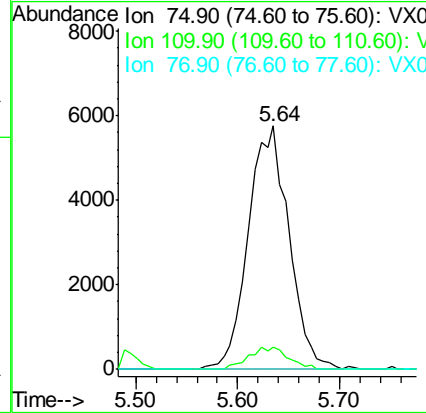
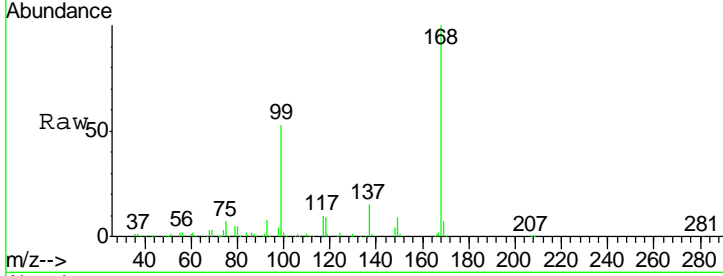




#36  
 1,1-Dichloropropene  
 Concen: 4.71 ug/l  
 RT: 5.64 min Scan# 746  
 Delta R.T. -0.13 min  
 Lab File: VX016624.D  
 Acq: 05 Jun 2020 20:04

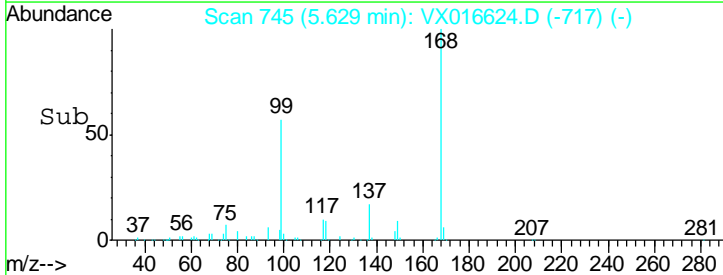
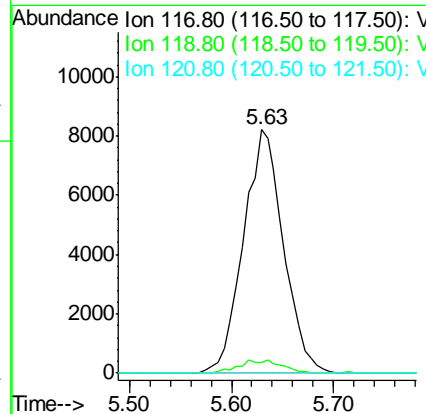
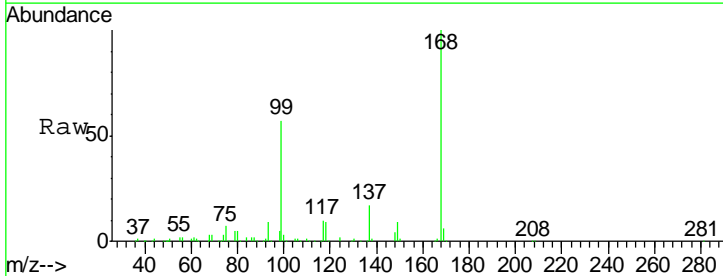
Instrument :  
 MSVOA\_X  
 ClientSampled :  
 DUP-20200604

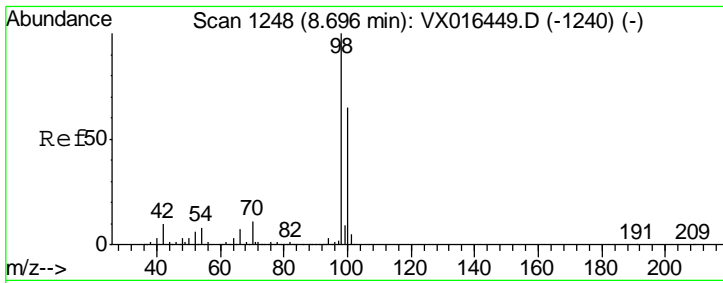
| Tgt Ion | Resp  | Lower | Upper |
|---------|-------|-------|-------|
| 75      | 15927 |       |       |
| 110     | 8.7   | 17.4  | 52.3# |
| 77      | 0.0   | 24.2  | 36.4# |



#38  
 Carbon Tetrachloride  
 Concen: 6.28 ug/l  
 RT: 5.63 min Scan# 745  
 Delta R.T. -0.13 min  
 Lab File: VX016624.D  
 Acq: 05 Jun 2020 20:04

| Tgt Ion | Resp  | Lower | Upper  |
|---------|-------|-------|--------|
| 117     | 22339 |       |        |
| 119     | 4.5   | 76.3  | 114.5# |
| 121     | 0.0   | 24.6  | 37.0#  |

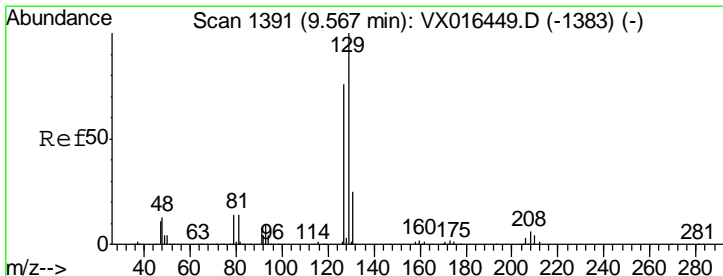
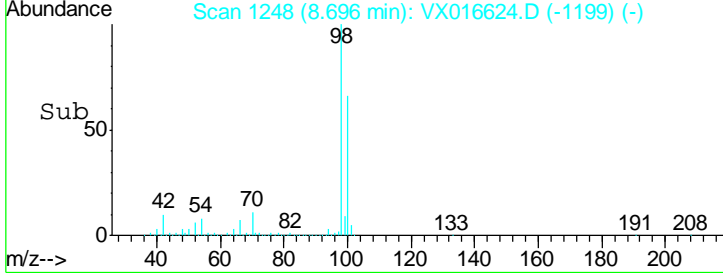
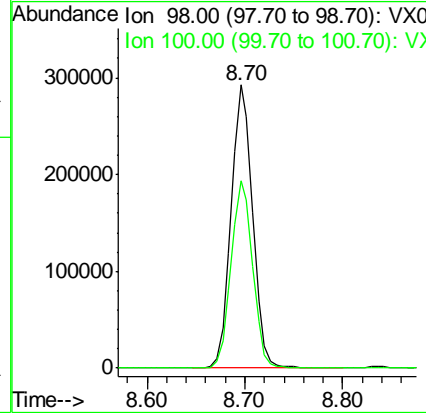
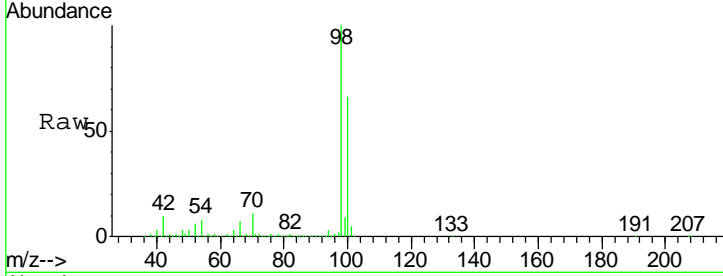




#50  
 Toluene-d8  
 Concen: 52.19 ug/l  
 RT: 8.70 min Scan# 1248  
 Delta R.T. -0.00 min  
 Lab File: VX016624.D  
 Acq: 05 Jun 2020 20:04

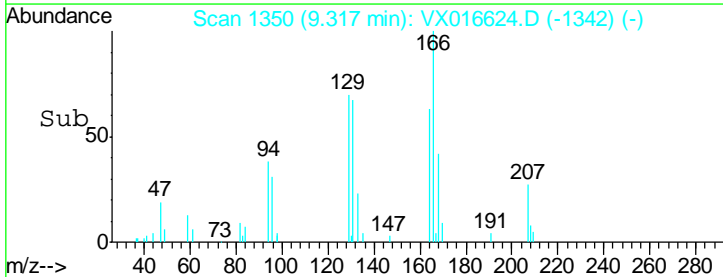
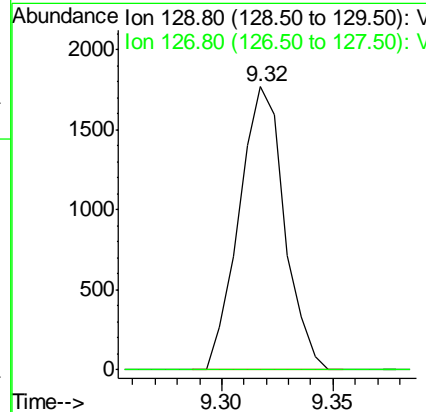
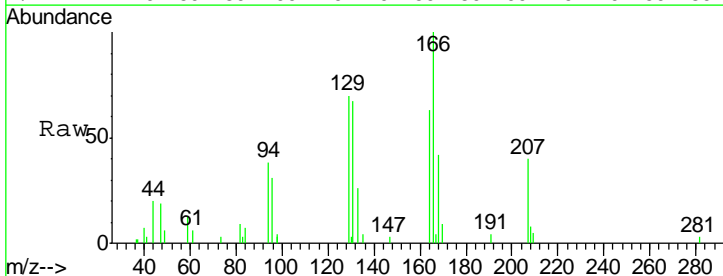
Instrument :  
 MSVOA\_X  
 ClientSampled :  
 DUP-20200604

Tgt Ion: 98 Resp: 447047  
 Ion Ratio Lower Upper  
 98 100  
 100 66.5 53.8 80.6

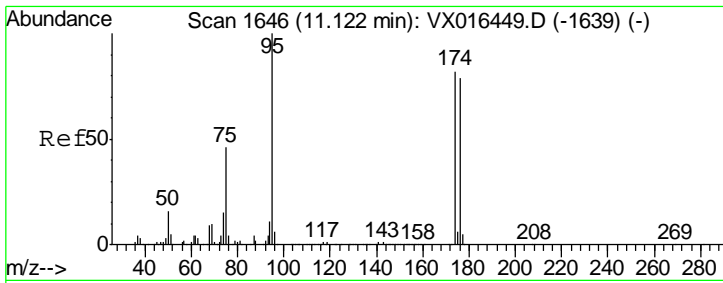


#60  
 Dibromochloromethane  
 Concen: 0.88 ug/l  
 RT: 9.32 min Scan# 1350  
 Delta R.T. -0.25 min  
 Lab File: VX016624.D  
 Acq: 05 Jun 2020 20:04

Tgt Ion: 129 Resp: 2509  
 Ion Ratio Lower Upper  
 129 100  
 127 0.0 38.6 116.0#



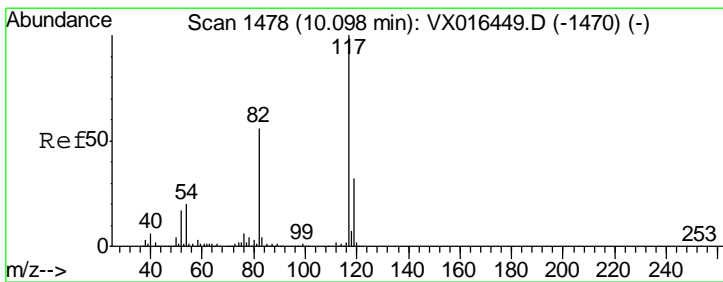
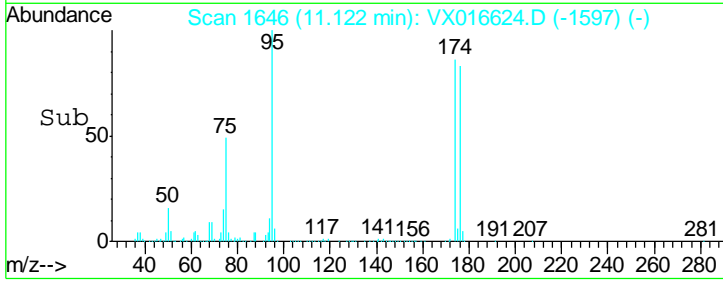
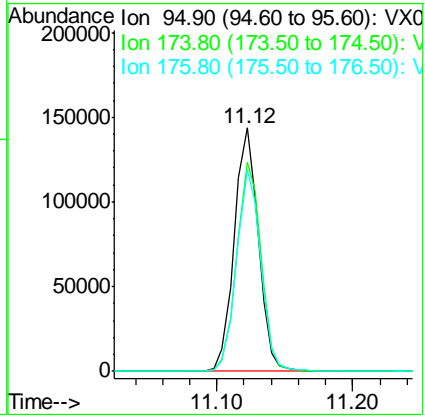
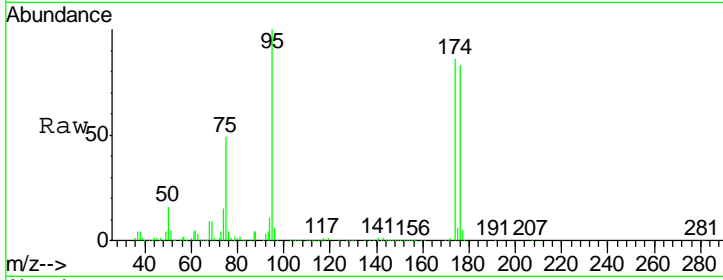




#62  
 4-Bromofluorobenzene  
 Concen: 53.56 ug/l  
 RT: 11.12 min Scan# 1646  
 Delta R.T. -0.00 min  
 Lab File: VX016624.D  
 Acq: 05 Jun 2020 20:04

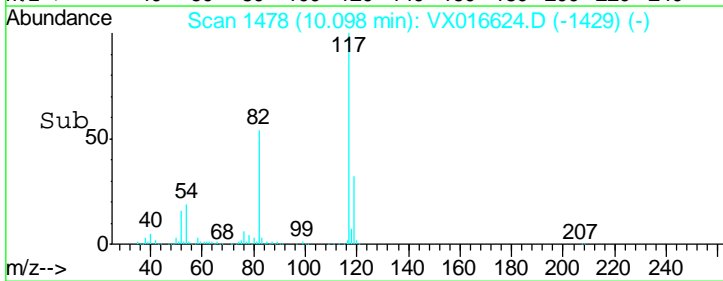
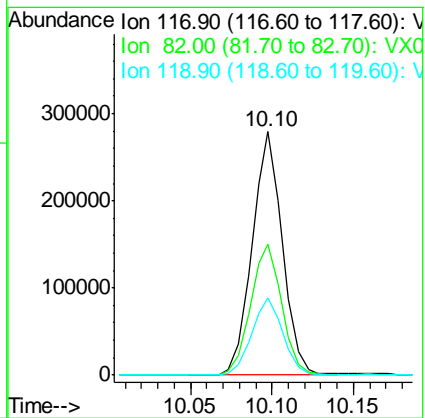
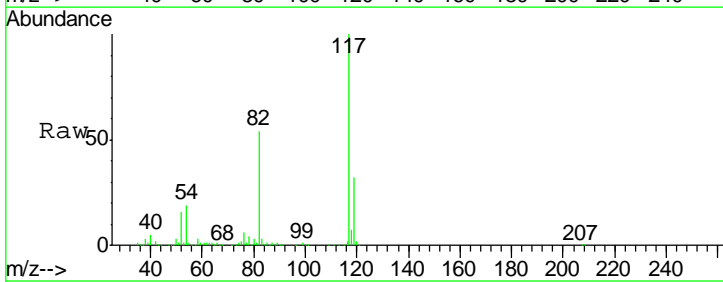
Instrument : MSVOA\_X  
 ClientSampled : DUP-20200604

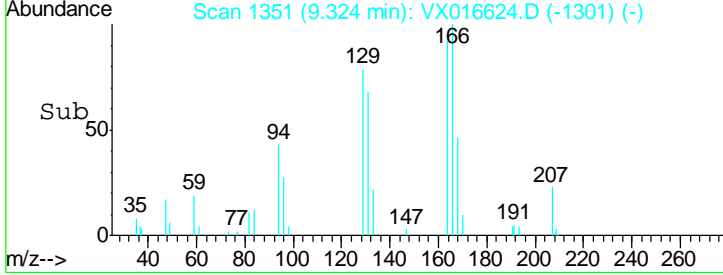
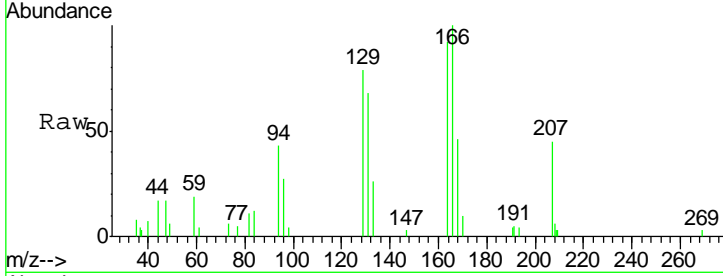
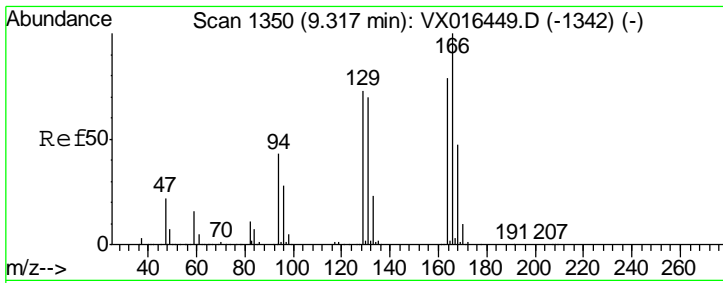
| Tgt Ion | Resp   | Lower | Upper |
|---------|--------|-------|-------|
| 95      | 177282 |       |       |
| 174     | 86.9   | 0.0   | 163.0 |
| 176     | 83.0   | 0.0   | 156.8 |



#63  
 Chlorobenzene-d5  
 Concen: 50.00 ug/l  
 RT: 10.10 min Scan# 1478  
 Delta R.T. -0.00 min  
 Lab File: VX016624.D  
 Acq: 05 Jun 2020 20:04

| Tgt Ion | Resp   | Lower | Upper |
|---------|--------|-------|-------|
| 117     | 360277 |       |       |
| 82      | 53.9   | 45.0  | 67.6  |
| 119     | 32.0   | 25.8  | 38.8  |

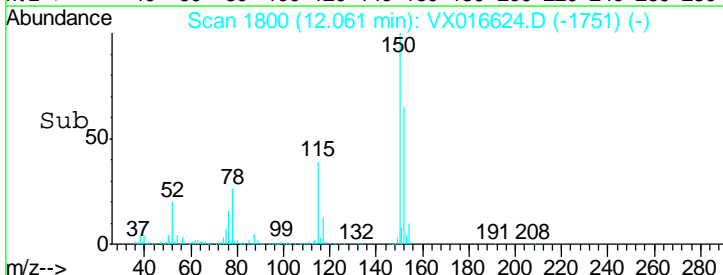
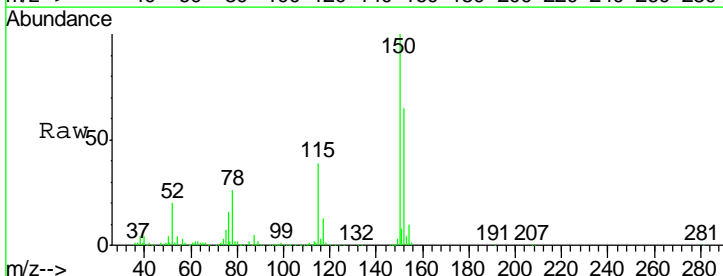
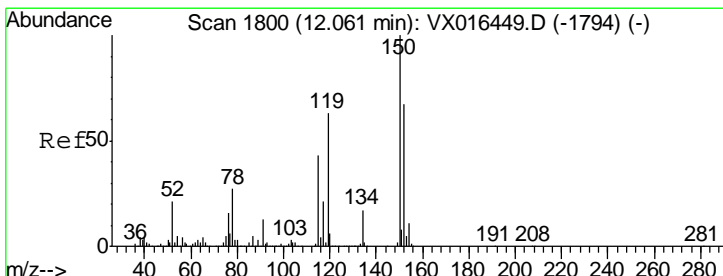
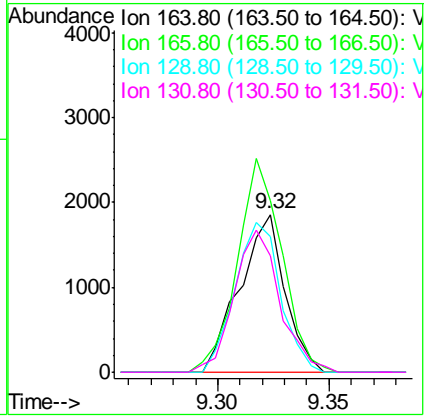




#64  
 Tetrachloroethene  
 Concen: 0.65 ug/l  
 RT: 9.32 min Scan# 1351  
 Delta R.T. 0.01 min  
 Lab File: VX016624.D  
 Acq: 05 Jun 2020 20:04

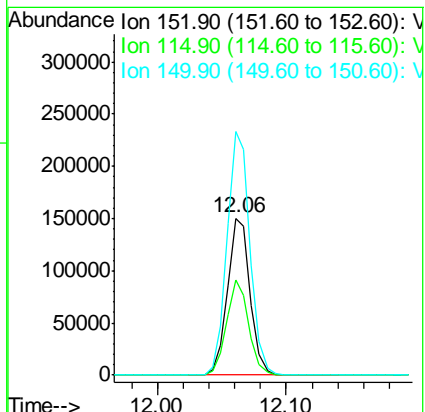
**Instrument :**  
 MSVOA\_X  
**ClientSampled :**  
 DUP-20200604

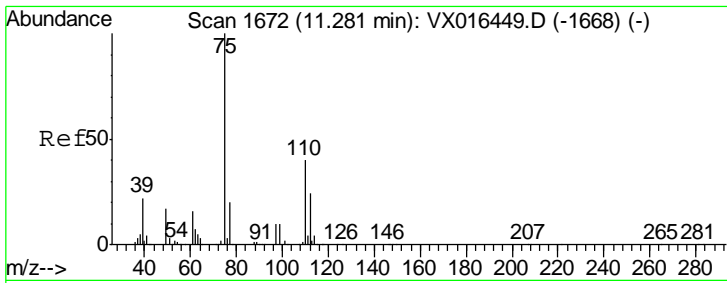
| Tgt Ion | Resp  | Lower | Upper |
|---------|-------|-------|-------|
| 164     | 100   |       |       |
| 166     | 109.1 | 100.9 | 151.3 |
| 129     | 85.9  | 73.2  | 109.8 |
| 131     | 74.4  | 70.8  | 106.2 |



#72  
 1,4-Dichlorobenzene-d4  
 Concen: 50.00 ug/l  
 RT: 12.06 min Scan# 1800  
 Delta R.T. -0.00 min  
 Lab File: VX016624.D  
 Acq: 05 Jun 2020 20:04

| Tgt Ion | Resp  | Lower | Upper |
|---------|-------|-------|-------|
| 152     | 100   |       |       |
| 115     | 58.8  | 39.9  | 119.6 |
| 150     | 157.1 | 0.0   | 341.0 |

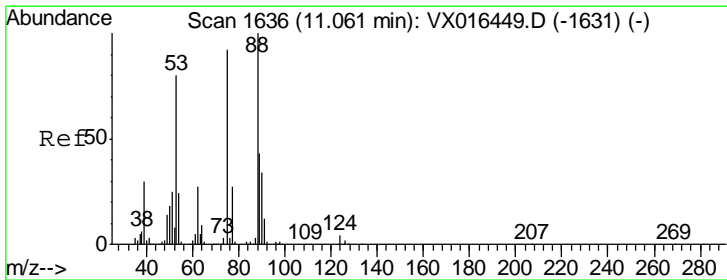
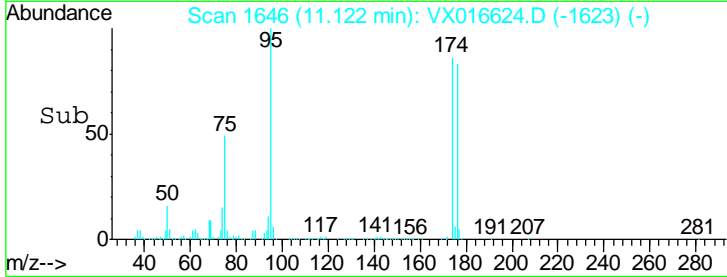
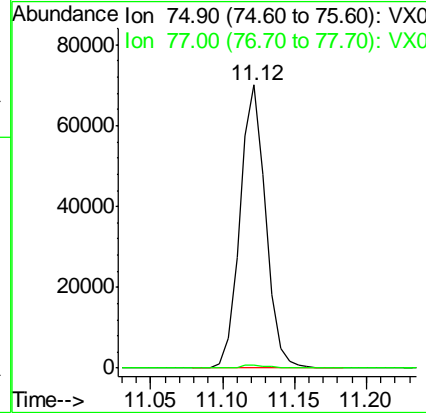
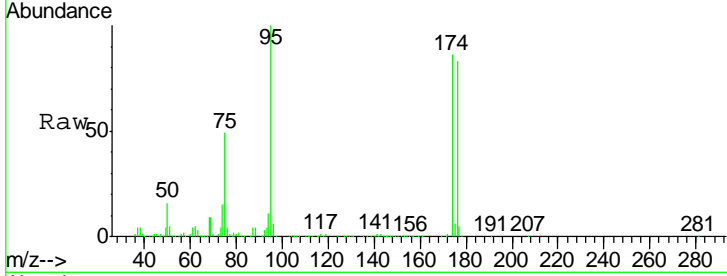




#76  
 1,2,3-Trichloropropane  
 Concen: 21.38 ug/l  
 RT: 11.12 min Scan# 1646  
 Delta R.T. -0.16 min  
 Lab File: VX016624.D  
 Acq: 05 Jun 2020 20:04

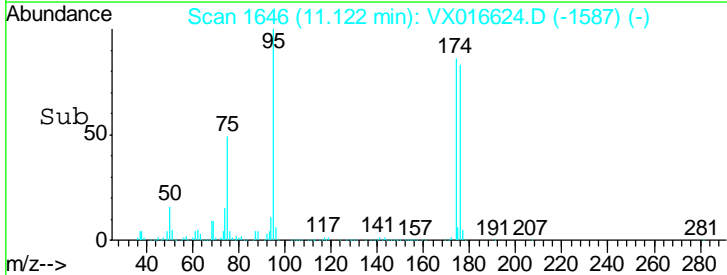
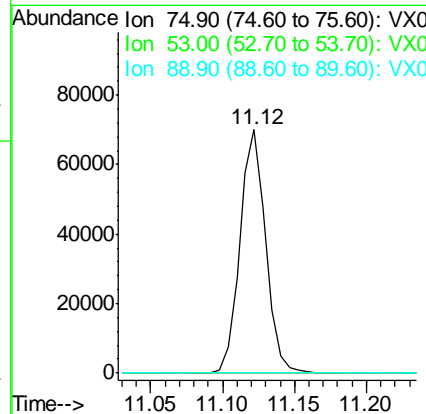
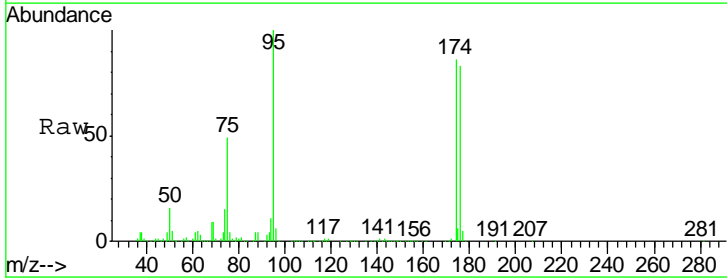
Instrument : MSVOA\_X  
 ClientSampled : DUP-20200604

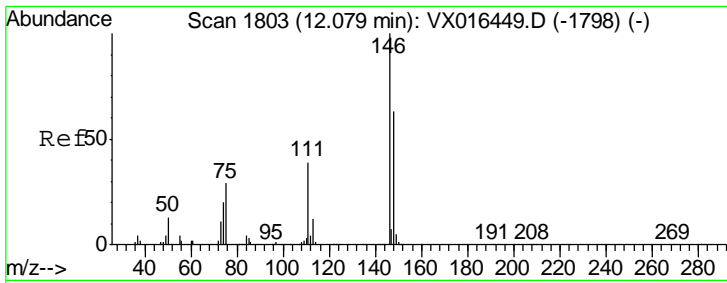
Tgt Ion: 75 Resp: 87138  
 Ion Ratio Lower Upper  
 75 100  
 77 1.2 21.3 63.7#



#81  
 trans-1,4-Dichloro-2-butene  
 Concen: 52.59 ug/l  
 RT: 11.12 min Scan# 1646  
 Delta R.T. 0.06 min  
 Lab File: VX016624.D  
 Acq: 05 Jun 2020 20:04

Tgt Ion: 75 Resp: 87138  
 Ion Ratio Lower Upper  
 75 100  
 53 0.1 71.3 106.9#  
 89 0.0 36.6 55.0#





#88  
 1,4-Dichlorobenzene  
 Concen: 0.21 ug/l  
 RT: 12.08 min Scan# 1803  
 Delta R.T. -0.00 min  
 Lab File: VX016624.D  
 Acq: 05 Jun 2020 20:04

Instrument :  
 MSVOA\_X  
 ClientSampleId :  
 DUP-20200604

| Tgt Ion | Resp  | Lower | Upper |
|---------|-------|-------|-------|
| 146     | 1263  |       |       |
| 111     | 213.7 | 19.4  | 58.2# |
| 148     | 129.0 | 31.4  | 94.3# |

