

Data Path : Z:\voasrv\HPCHEM1\MSVOA_X\Data\VX060625\
 Data File : VX046555.D
 Acq On : 07 Jun 2025 04:31
 Operator : JC/MD
 Sample : Q2236-17
 Misc : 5.0mL/MSVOA_X/WATER
 ALS Vial : 44 Sample Multiplier: 1

Instrument :
 MSVOA_X
 ClientSampleId :
 WC-A2-07-G

Quant Time: Jun 07 05:25:53 2025
 Quant Method : Z:\voasrv\HPCHEM1\MSVOA_X\Method\82X060625W.M
 Quant Title : SW846 8260
 QLast Update : Fri Jun 06 16:56:12 2025
 Response via : Initial Calibration

Compound	R.T.	QIon	Response	Conc	Units	Dev(Min)

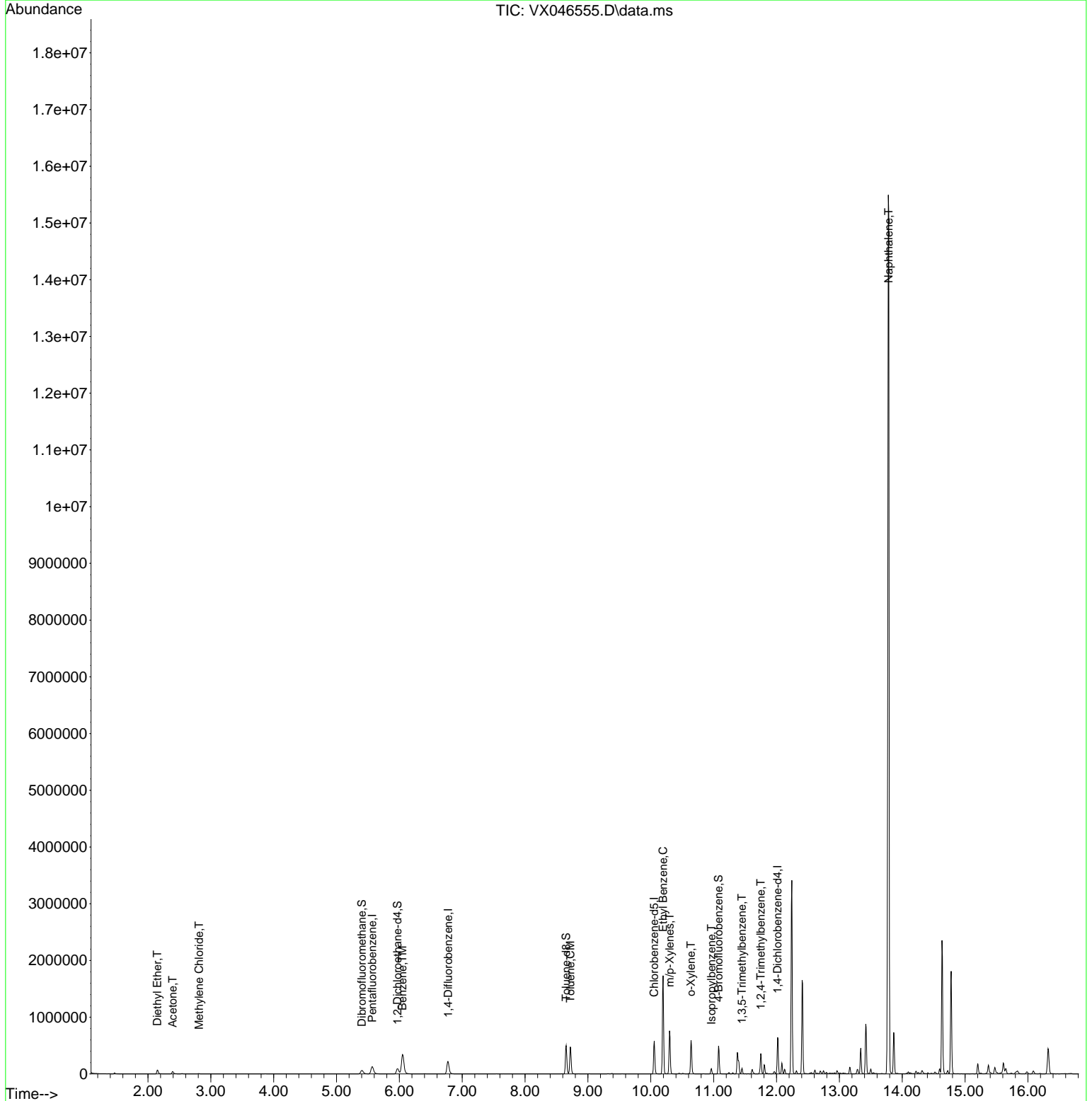
Internal Standards						
1) Pentafluorobenzene	5.568	168	119993	50.000	ug/l	0.00
34) 1,4-Difluorobenzene	6.775	114	228870	50.000	ug/l	0.00
63) Chlorobenzene-d5	10.055	117	241518	50.000	ug/l	0.00
72) 1,4-Dichlorobenzene-d4	12.018	152	121477	50.000	ug/l	0.00
System Monitoring Compounds						
33) 1,2-Dichloroethane-d4	5.970	65	101404	47.501	ug/l	0.00
Spiked Amount	50.000	Range	74 - 125	Recovery	=	95.000%
35) Dibromofluoromethane	5.403	113	58738	34.899	ug/l	0.00
Spiked Amount	50.000	Range	75 - 124	Recovery	=	69.800%#
50) Toluene-d8	8.653	98	293116	52.823	ug/l	0.00
Spiked Amount	50.000	Range	86 - 113	Recovery	=	105.640%
62) 4-Bromofluorobenzene	11.079	95	133450	58.126	ug/l	0.00
Spiked Amount	50.000	Range	77 - 121	Recovery	=	116.260%
Target Compounds						
						Qvalue
8) Diethyl Ether	2.148	74	27604	31.239	ug/l	93
16) Acetone	2.391	43	52524	66.097	ug/l	99
20) Methylene Chloride	2.812	84	2744	1.602	ug/l #	79
40) Benzene	6.049	78	425637	62.888	ug/l	99
52) Toluene	8.720	92	177358	42.654	ug/l	99
67) Ethyl Benzene	10.195	91	960531	96.864	ug/l	98
68) m/p-Xylenes	10.299	106	164878	45.836	ug/l	100
69) o-Xylene	10.640	106	114888	33.020	ug/l	99
73) Isopropylbenzene	10.963	105	45915	4.808	ug/l	100
80) 1,3,5-Trimethylbenzene	11.451	105	43065	5.412	ug/l	98
84) 1,2,4-Trimethylbenzene	11.750	105	151023	18.761	ug/l	98
95) Naphthalene	13.786	128	9909635	1102.595	ug/l	97

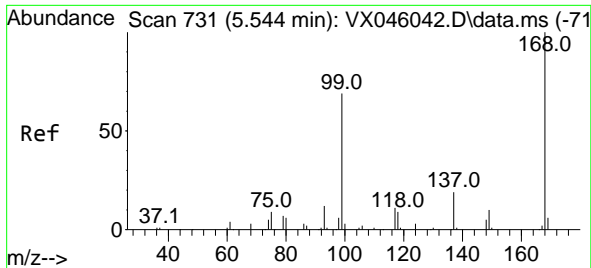
(#) = qualifier out of range (m) = manual integration (+) = signals summed

Data Path : Z:\voasrv\HPCHEM1\MSVOA_X\Data\VX060625\
 Data File : VX046555.D
 Acq On : 07 Jun 2025 04:31
 Operator : JC/MD
 Sample : Q2236-17
 Misc : 5.0mL/MSVOA_X/WATER
 ALS Vial : 44 Sample Multiplier: 1

Instrument :
 MSVOA_X
 ClientSampleId :
 WC-A2-07-G

Quant Time: Jun 07 05:25:53 2025
 Quant Method : Z:\voasrv\HPCHEM1\MSVOA_X\Method\82X060625W.M
 Quant Title : SW846 8260
 QLast Update : Fri Jun 06 16:56:12 2025
 Response via : Initial Calibration

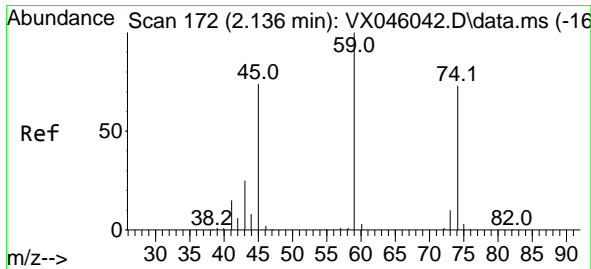
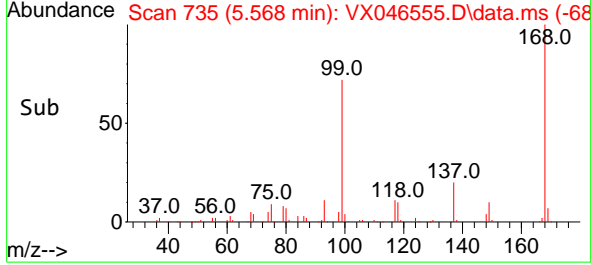
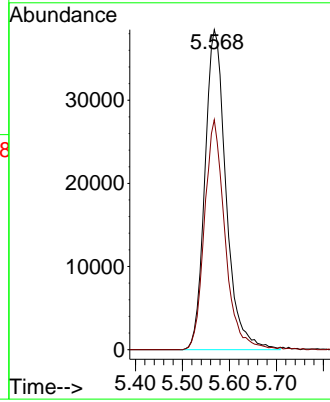
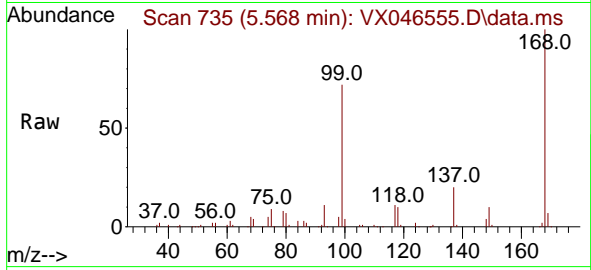




#1
 Pentafluorobenzene
 Concen: 50.000 ug/l
 RT: 5.568 min Scan# 71
 Delta R.T. -0.000 min
 Lab File: VX046555.D
 Acq: 07 Jun 2025 04:31

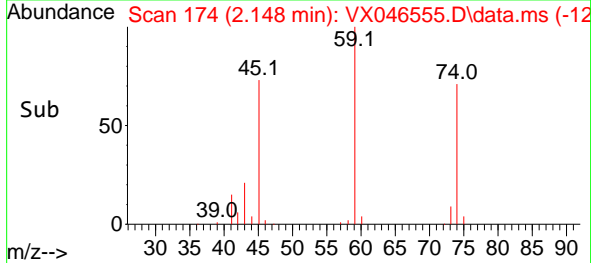
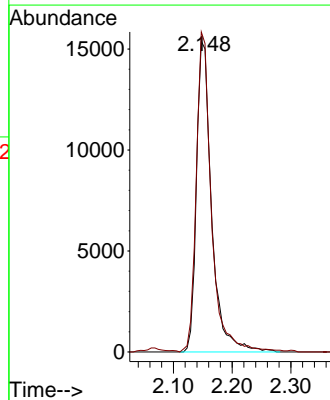
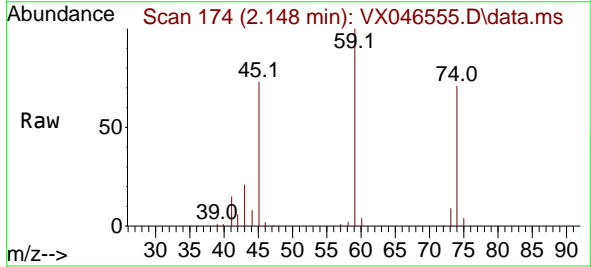
Instrument :
 MSVOA_X
 ClientSampleId :
 WC-A2-07-G

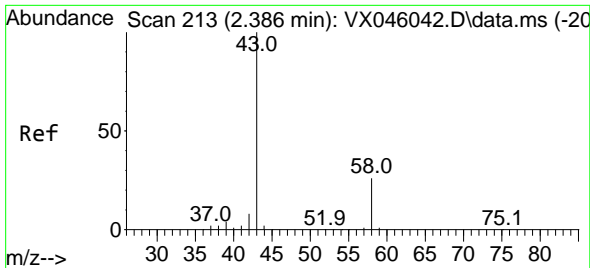
Tgt Ion:168 Resp: 119993
 Ion Ratio Lower Upper
 168 100
 99 71.9 54.9 82.3



#8
 Diethyl Ether
 Concen: 31.239 ug/l
 RT: 2.148 min Scan# 174
 Delta R.T. -0.006 min
 Lab File: VX046555.D
 Acq: 07 Jun 2025 04:31

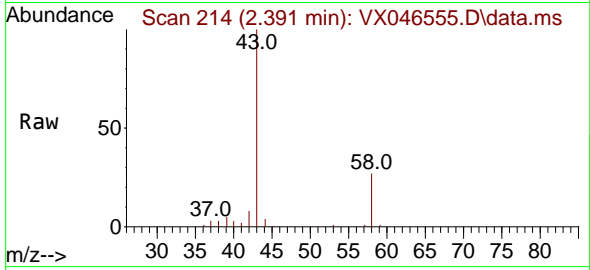
Tgt Ion: 74 Resp: 27604
 Ion Ratio Lower Upper
 74 100
 45 102.9 54.9 164.8



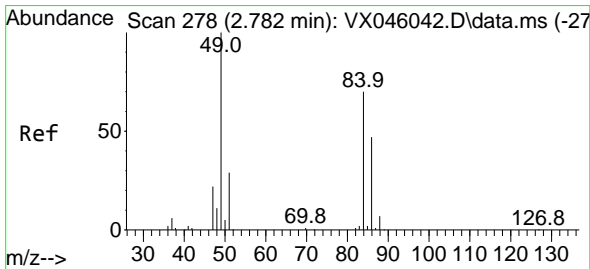
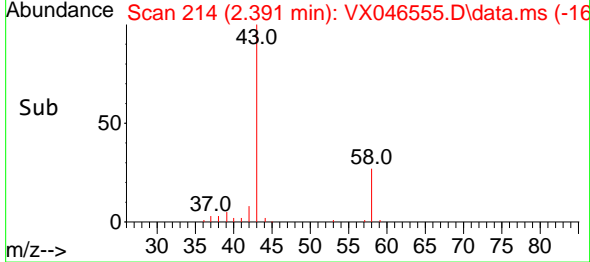
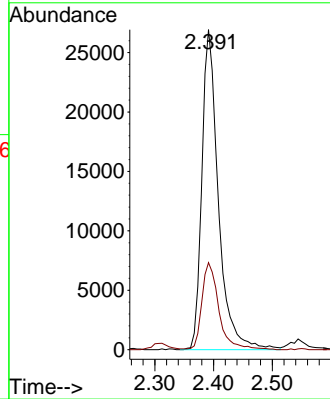


#16
 Acetone
 Concen: 66.097 ug/l
 RT: 2.391 min Scan# 214
 Delta R.T. -0.001 min
 Lab File: VX046555.D
 Acq: 07 Jun 2025 04:31

Instrument : MSVOA_X
 ClientSampleId : WC-A2-07-G

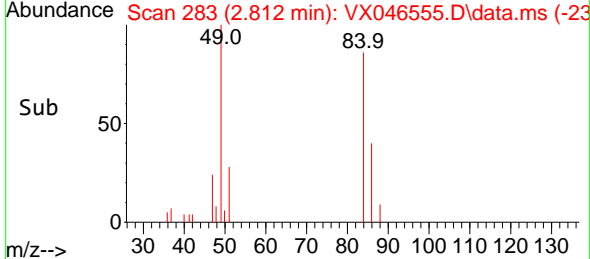
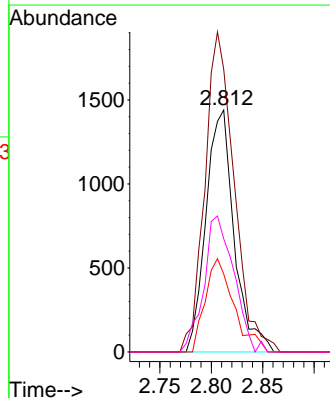
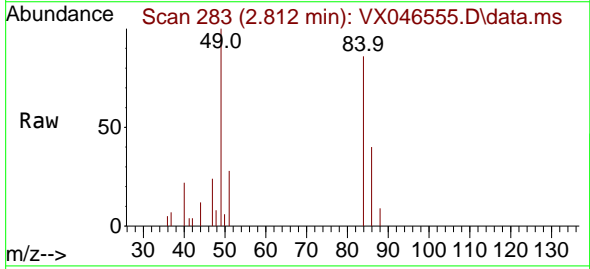


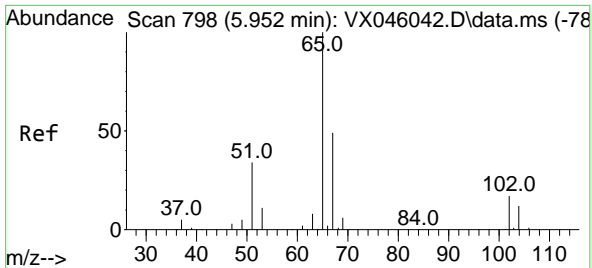
Tgt Ion: 43 Resp: 52524
 Ion Ratio Lower Upper
 43 100
 58 27.2 21.2 31.8



#20
 Methylene Chloride
 Concen: 1.602 ug/l
 RT: 2.812 min Scan# 283
 Delta R.T. 0.006 min
 Lab File: VX046555.D
 Acq: 07 Jun 2025 04:31

Tgt Ion: 84 Resp: 2744
 Ion Ratio Lower Upper
 84 100
 49 116.9 113.9 170.9
 51 32.2 33.5 50.3#
 86 46.8 53.8 80.8#

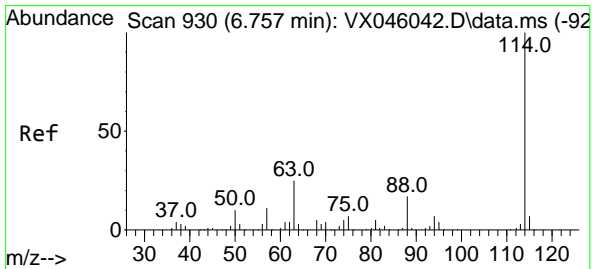
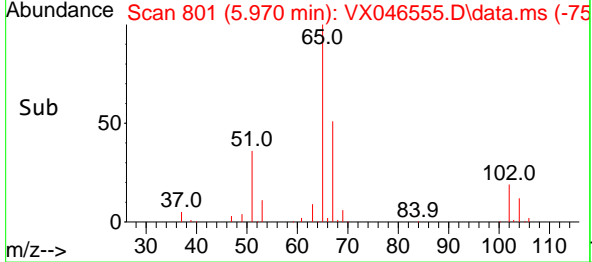
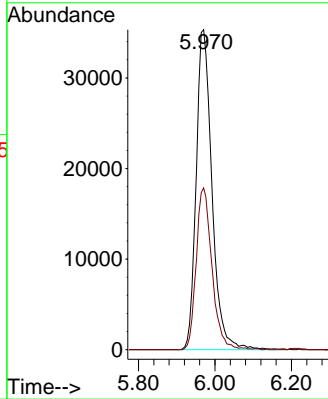
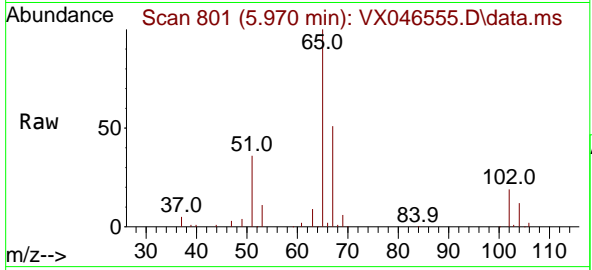




#33
 1,2-Dichloroethane-d4
 Concen: 47.501 ug/l
 RT: 5.970 min Scan# 801
 Delta R.T. 0.000 min
 Lab File: VX046555.D
 Acq: 07 Jun 2025 04:31

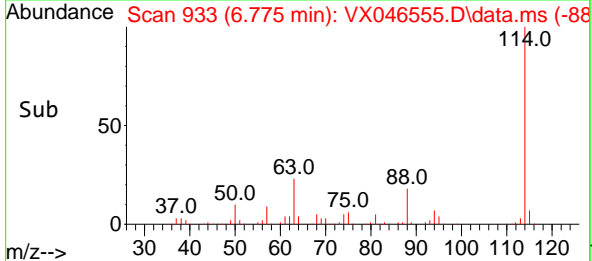
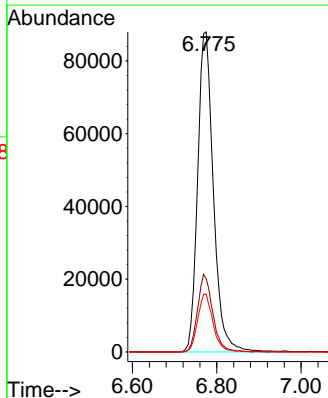
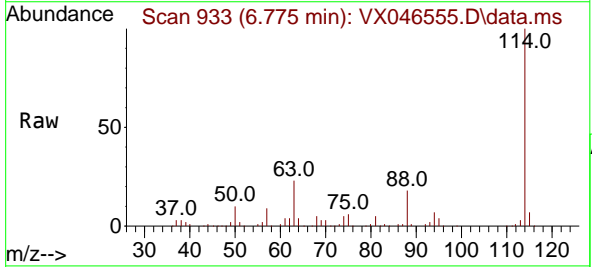
Instrument : MSVOA_X
 ClientSampleId : WC-A2-07-G

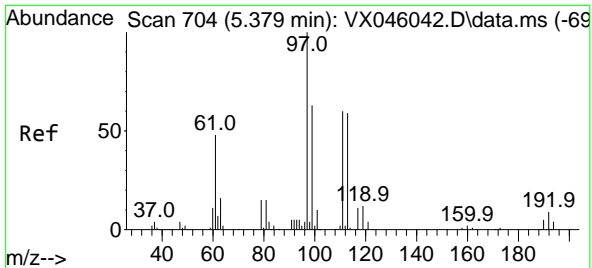
Tgt Ion: 65 Resp: 101404
 Ion Ratio Lower Upper
 65 100
 67 50.4 0.0 99.0



#34
 1,4-Difluorobenzene
 Concen: 50.000 ug/l
 RT: 6.775 min Scan# 933
 Delta R.T. -0.000 min
 Lab File: VX046555.D
 Acq: 07 Jun 2025 04:31

Tgt Ion:114 Resp: 228870
 Ion Ratio Lower Upper
 114 100
 63 22.9 0.0 49.2
 88 18.0 0.0 33.6

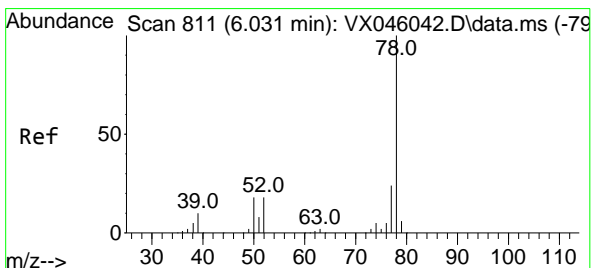
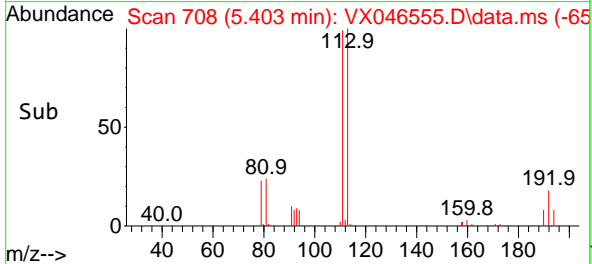
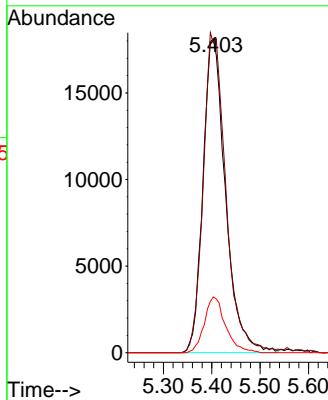
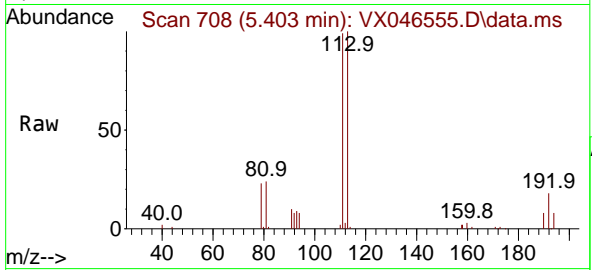




#35
 Dibromofluoromethane
 Concen: 34.899 ug/l
 RT: 5.403 min Scan# 704
 Delta R.T. 0.000 min
 Lab File: VX046555.D
 Acq: 07 Jun 2025 04:31

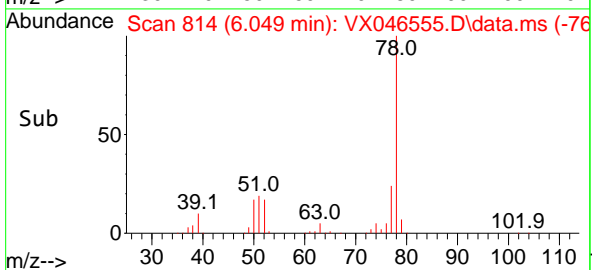
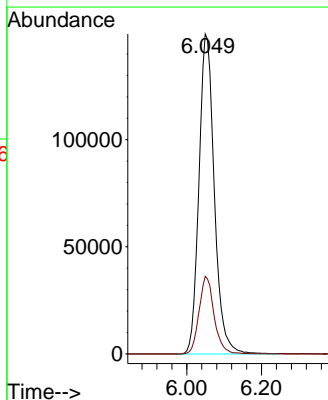
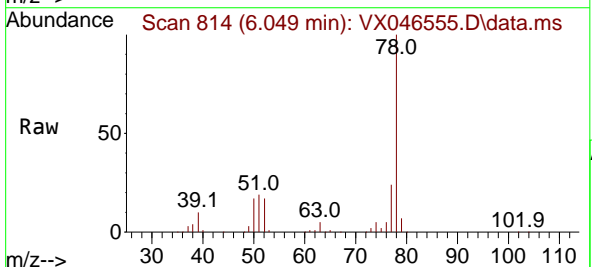
Instrument :
 MSVOA_X
 ClientSampleId :
 WC-A2-07-G

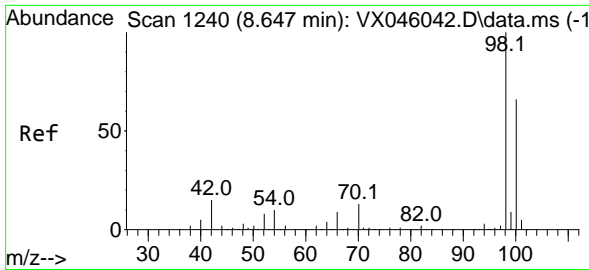
Tgt Ion:113 Resp: 58738
 Ion Ratio Lower Upper
 113 100
 111 102.0 83.1 124.7
 192 16.7 13.3 19.9



#40
 Benzene
 Concen: 62.888 ug/l
 RT: 6.049 min Scan# 814
 Delta R.T. -0.007 min
 Lab File: VX046555.D
 Acq: 07 Jun 2025 04:31

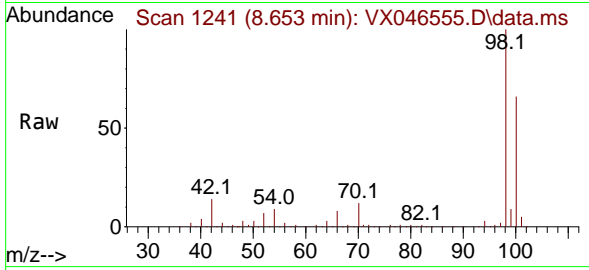
Tgt Ion: 78 Resp: 425637
 Ion Ratio Lower Upper
 78 100
 77 24.3 19.0 28.4



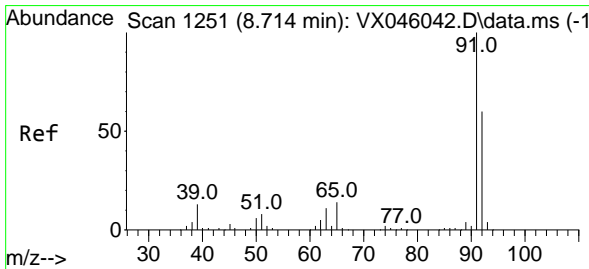
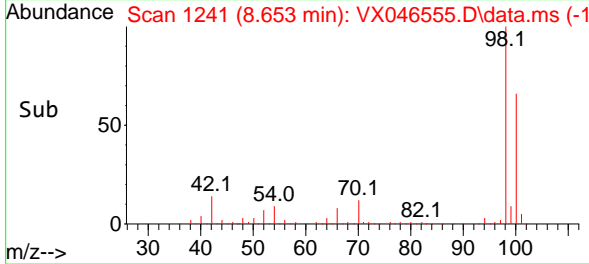
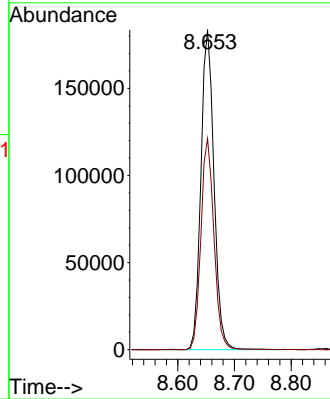


#50
 Toluene-d8
 Concen: 52.823 ug/l
 RT: 8.653 min Scan# 1241
 Delta R.T. -0.000 min
 Lab File: VX046555.D
 Acq: 07 Jun 2025 04:31

Instrument : MSVOA_X
 ClientSampleId : WC-A2-07-G

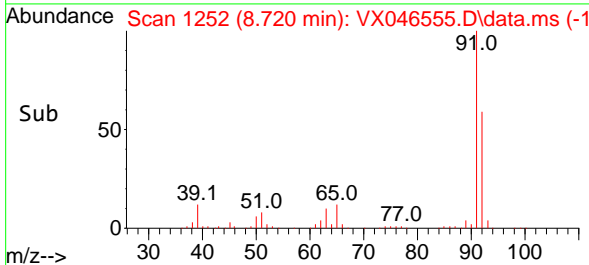
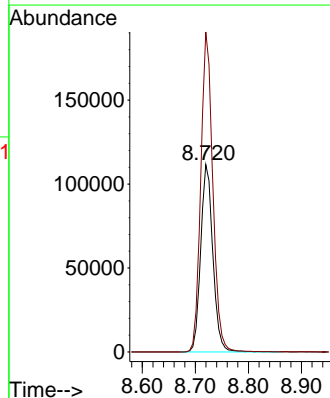
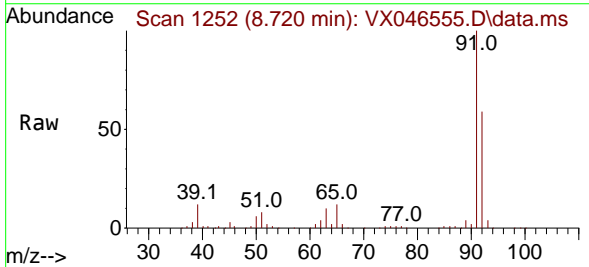


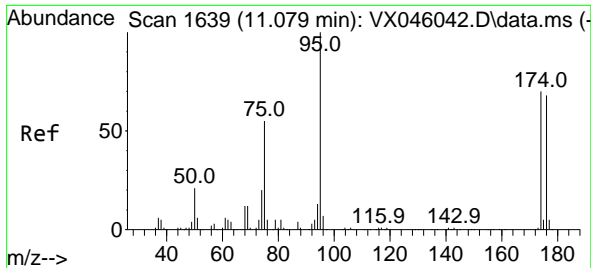
Tgt Ion: 98 Resp: 293116
 Ion Ratio Lower Upper
 98 100
 100 65.9 53.5 80.3



#52
 Toluene
 Concen: 42.654 ug/l
 RT: 8.720 min Scan# 1252
 Delta R.T. -0.000 min
 Lab File: VX046555.D
 Acq: 07 Jun 2025 04:31

Tgt Ion: 92 Resp: 177358
 Ion Ratio Lower Upper
 92 100
 91 169.0 136.6 205.0



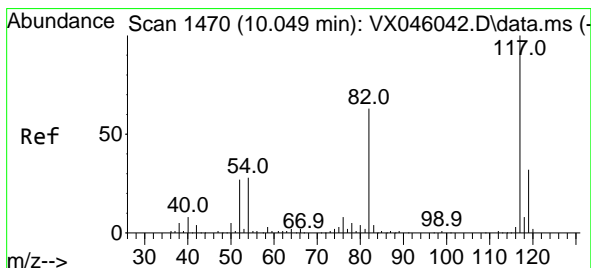
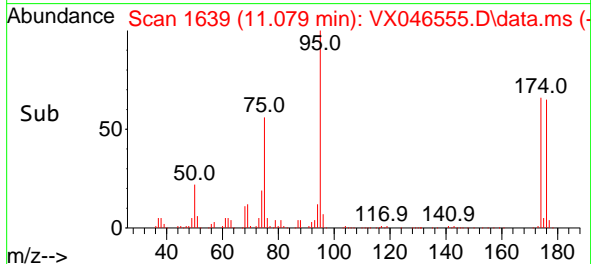
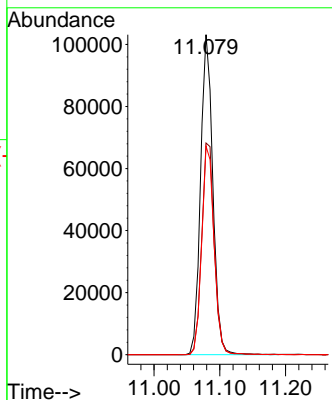
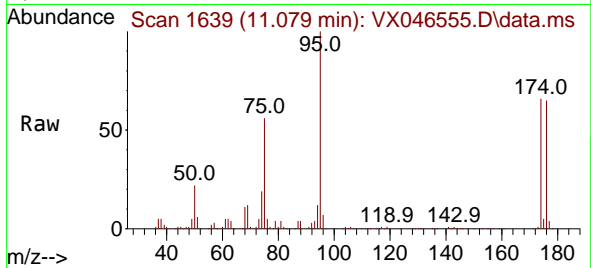


#62
 4-Bromofluorobenzene
 Concen: 58.126 ug/l
 RT: 11.079 min Scan# 1639
 Delta R.T. -0.000 min
 Lab File: VX046555.D
 Acq: 07 Jun 2025 04:31

Instrument :
 MSVOA_X
 ClientSampleId :
 WC-A2-07-G

Tgt Ion: 95 Resp: 133450

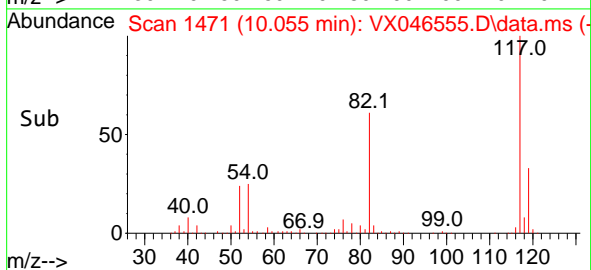
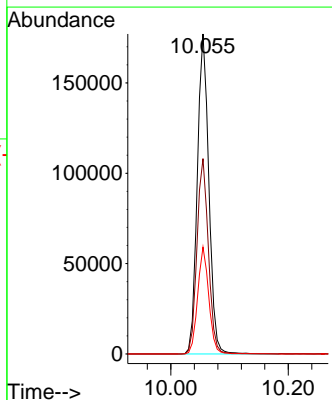
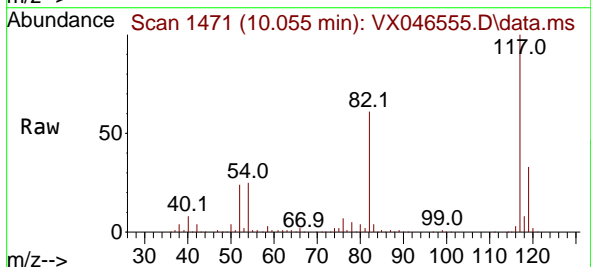
Ion	Ratio	Lower	Upper
95	100		
174	67.5	0.0	135.8
176	65.9	0.0	131.4

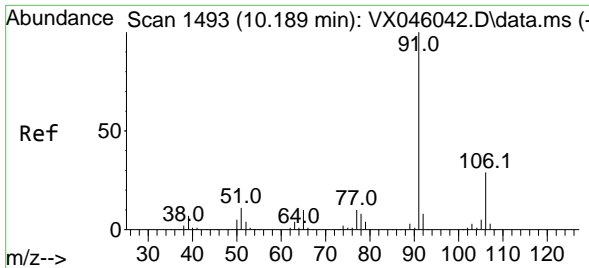


#63
 Chlorobenzene-d5
 Concen: 50.000 ug/l
 RT: 10.055 min Scan# 1471
 Delta R.T. -0.000 min
 Lab File: VX046555.D
 Acq: 07 Jun 2025 04:31

Tgt Ion: 117 Resp: 241518

Ion	Ratio	Lower	Upper
117	100		
82	61.0	50.6	76.0
119	33.4	25.8	38.6

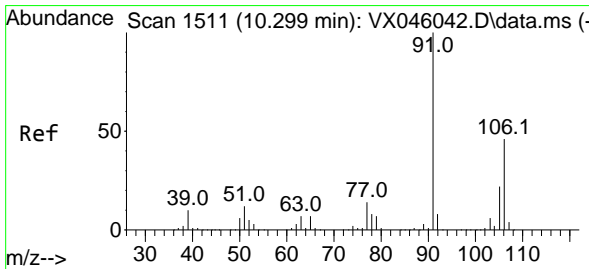
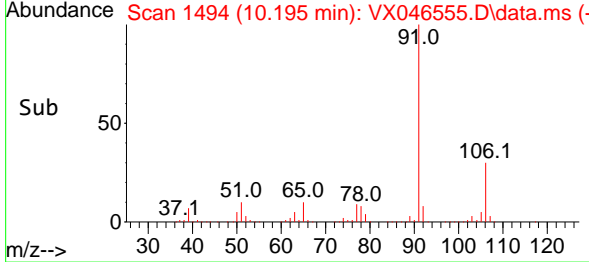
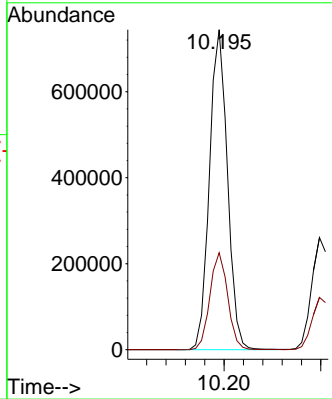
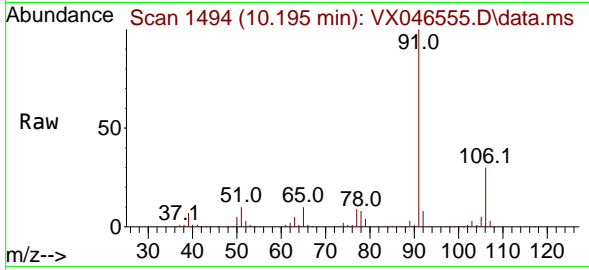




#67
 Ethyl Benzene
 Concen: 96.864 ug/l
 RT: 10.195 min Scan# 1494
 Delta R.T. -0.000 min
 Lab File: VX046555.D
 Acq: 07 Jun 2025 04:31

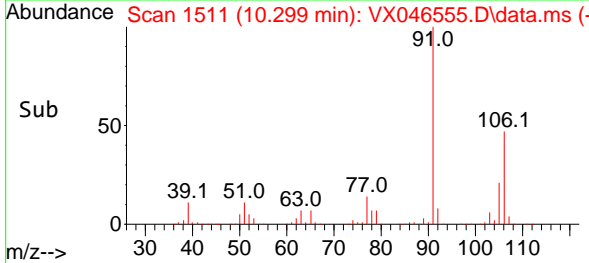
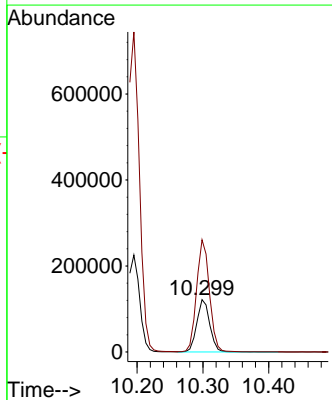
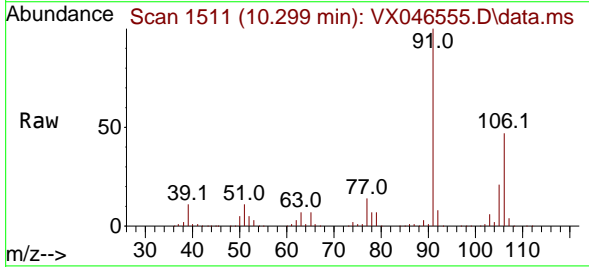
Instrument : MSVOA_X
 ClientSampleId : WC-A2-07-G

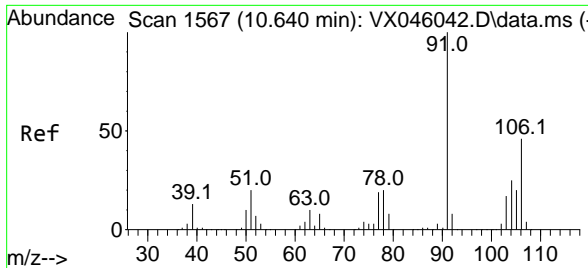
Tgt Ion: 91 Resp: 960531
 Ion Ratio Lower Upper
 91 100
 106 30.3 23.4 35.2



#68
 m/p-Xylenes
 Concen: 45.836 ug/l
 RT: 10.299 min Scan# 1511
 Delta R.T. -0.000 min
 Lab File: VX046555.D
 Acq: 07 Jun 2025 04:31

Tgt Ion: 106 Resp: 164878
 Ion Ratio Lower Upper
 106 100
 91 213.6 171.2 256.8

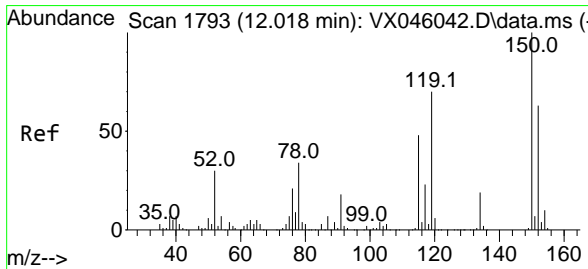
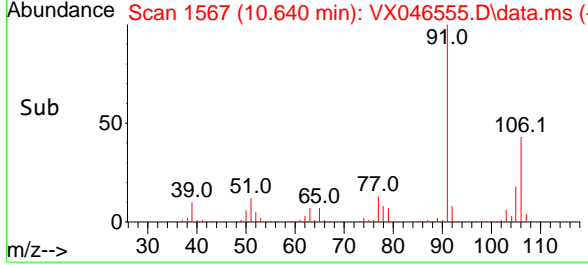
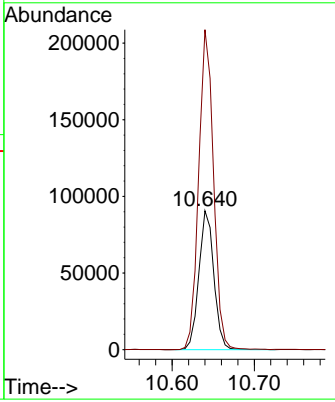
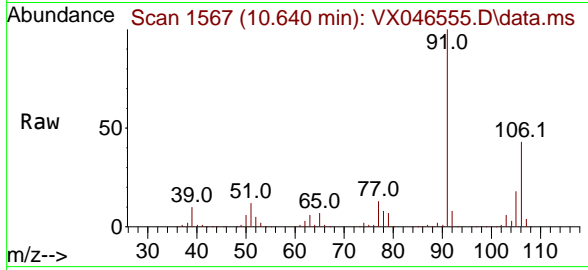




#69
 o-Xylene
 Concen: 33.020 ug/l
 RT: 10.640 min Scan# 11
 Delta R.T. -0.000 min
 Lab File: VX046555.D
 Acq: 07 Jun 2025 04:31

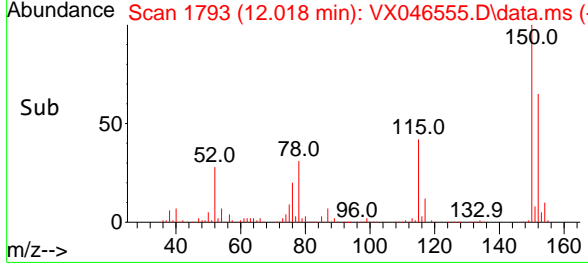
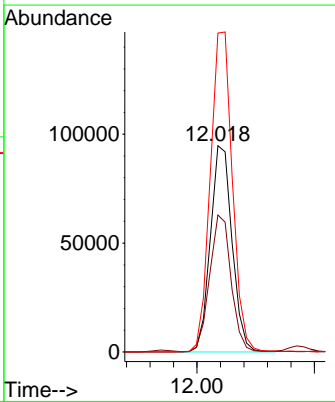
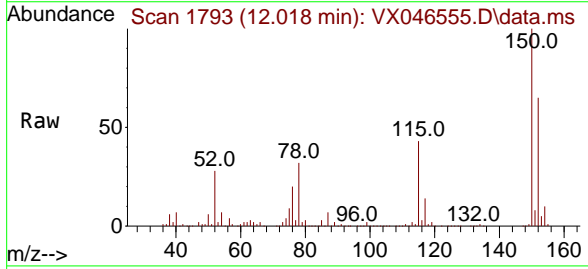
Instrument : MSVOA_X
 ClientSampleId : WC-A2-07-G

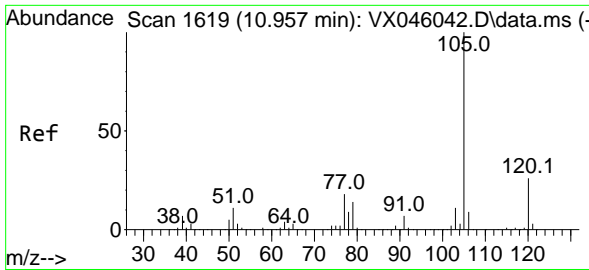
Tgt Ion:106 Resp: 114888
 Ion Ratio Lower Upper
 106 100
 91 227.8 112.7 338.1



#72
 1,4-Dichlorobenzene-d4
 Concen: 50.000 ug/l
 RT: 12.018 min Scan# 1793
 Delta R.T. -0.006 min
 Lab File: VX046555.D
 Acq: 07 Jun 2025 04:31

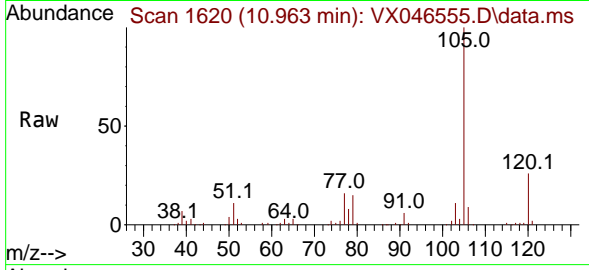
Tgt Ion:152 Resp: 121477
 Ion Ratio Lower Upper
 152 100
 115 65.2 46.9 140.7
 150 157.9 0.0 351.0



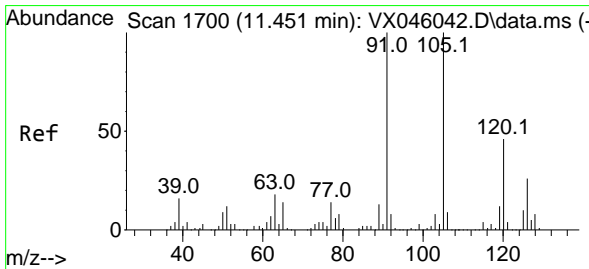
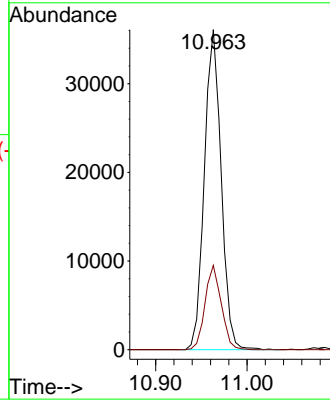
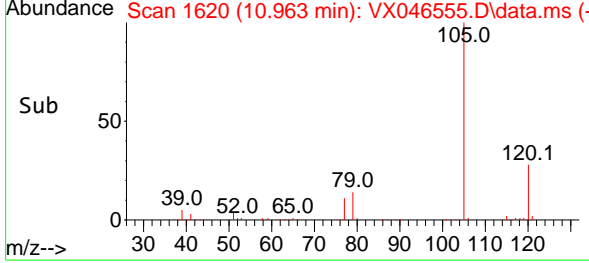


#73
 Isopropylbenzene
 Concen: 4.808 ug/l
 RT: 10.963 min Scan# 1619
 Delta R.T. 0.000 min
 Lab File: VX046555.D
 Acq: 07 Jun 2025 04:31

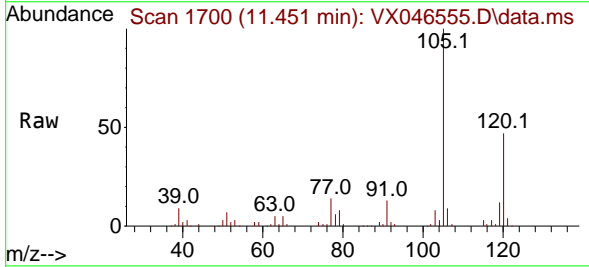
Instrument :
 MSVOA_X
 ClientSampleId :
 WC-A2-07-G



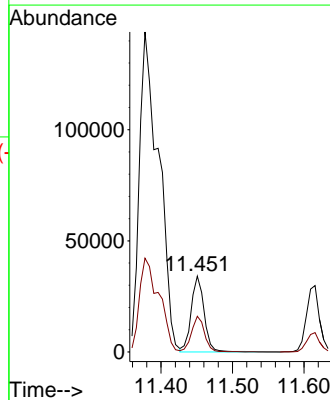
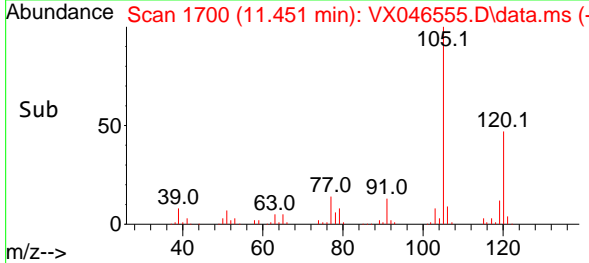
Tgt Ion:105 Resp: 45915
 Ion Ratio Lower Upper
 105 100
 120 25.4 12.8 38.4

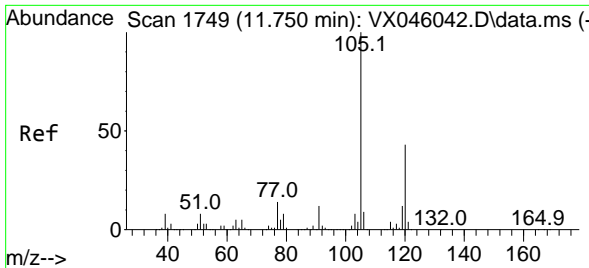


#80
 1,3,5-Trimethylbenzene
 Concen: 5.412 ug/l
 RT: 11.451 min Scan# 1700
 Delta R.T. -0.000 min
 Lab File: VX046555.D
 Acq: 07 Jun 2025 04:31



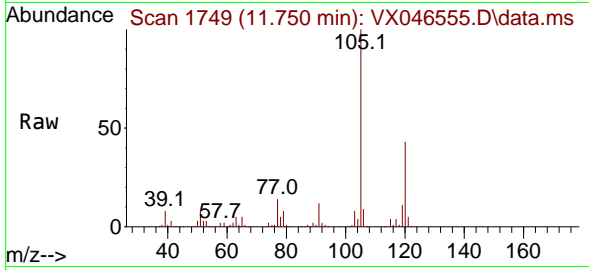
Tgt Ion:105 Resp: 43065
 Ion Ratio Lower Upper
 105 100
 120 47.1 23.1 69.2



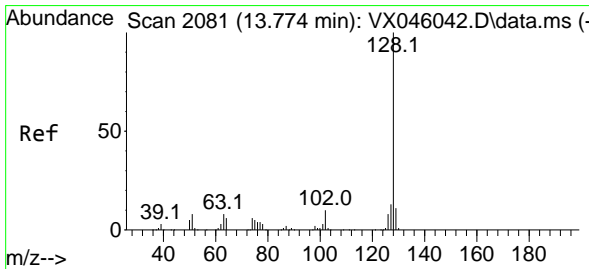
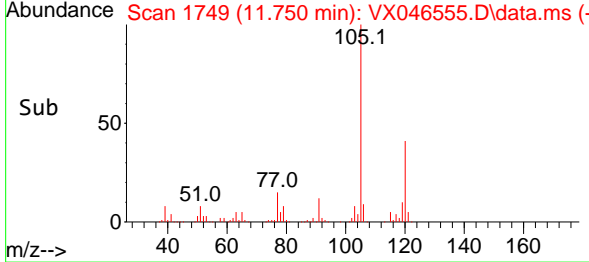
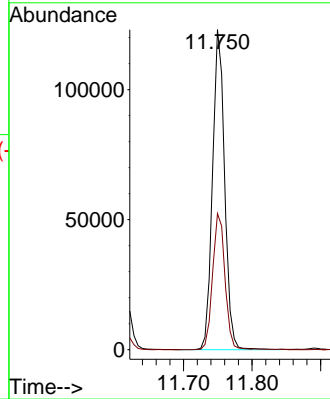


#84
 1,2,4-Trimethylbenzene
 Concen: 18.761 ug/l
 RT: 11.750 min Scan# 11
 Delta R.T. -0.000 min
 Lab File: VX046555.D
 Acq: 07 Jun 2025 04:31

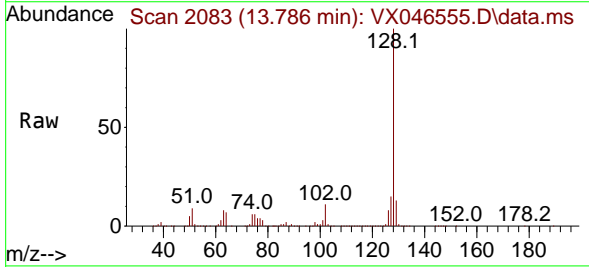
Instrument :
 MSVOA_X
 ClientSampleId :
 WC-A2-07-G



Tgt Ion:105 Resp: 151023
 Ion Ratio Lower Upper
 105 100
 120 43.4 21.2 63.6



#95
 Naphthalene
 Concen: 1102.595 ug/l
 RT: 13.786 min Scan# 2083
 Delta R.T. 0.012 min
 Lab File: VX046555.D
 Acq: 07 Jun 2025 04:31



Tgt Ion:128 Resp: 9909635
 Ion Ratio Lower Upper
 128 100
 127 14.0 10.4 15.6
 129 12.5 8.6 13.0

