

Data Path : Z:\voasrv\HPCHEM1\MSVOA_X\Data\VX060625\
 Data File : VX046526.D
 Acq On : 06 Jun 2025 14:39
 Operator : JC/MD
 Sample : VX0606MBL01
 Misc : 5.00g/10mL/100uL/5.00mL/MSVOA_X/MEOH
 ALS Vial : 11 Sample Multiplier: 1

Instrument :
 MSVOA_X
 ClientSampleId :
 VX0606MBL01

Integration Parameters: RTEINT.P

Integrator: RTE
 Smoothing : ON Filtering: 5
 Sampling : 1 Min Area: 3 % of largest Peak
 Start Thrs: 0.2 Max Peaks: 100
 Stop Thrs : 0 Peak Location: TOP

If leading or trailing edge < 100 prefer < Baseline drop else tangent >
 Peak separation: 5

Method : Z:\voasrv\HPCHEM1\MSVOA_X\Method\82X060625W.M
 Title : SW846 8260

Signal : TIC: VX046526.D\data.ms

peak #	R.T. min	first scan	max scan	last scan	PK TY	peak height	corr. area	corr. % max.	% of total
1	5.397	696	707	724	rBV2	70464	220030	34.60%	6.177%
2	5.562	724	734	754	rVB	104203	324841	51.08%	9.119%
3	5.964	790	800	819	rBV	79403	224757	35.34%	6.309%
4	6.769	921	932	951	rBV	184760	477511	75.09%	13.405%
5	8.647	1234	1240	1260	rBV	375144	635914	100.00%	17.851%
6	10.055	1465	1471	1492	rBV	451592	619930	97.49%	17.403%
7	11.079	1634	1639	1653	rBV	379421	485580	76.36%	13.631%
8	12.018	1788	1793	1807	rVB	439782	573688	90.21%	16.105%

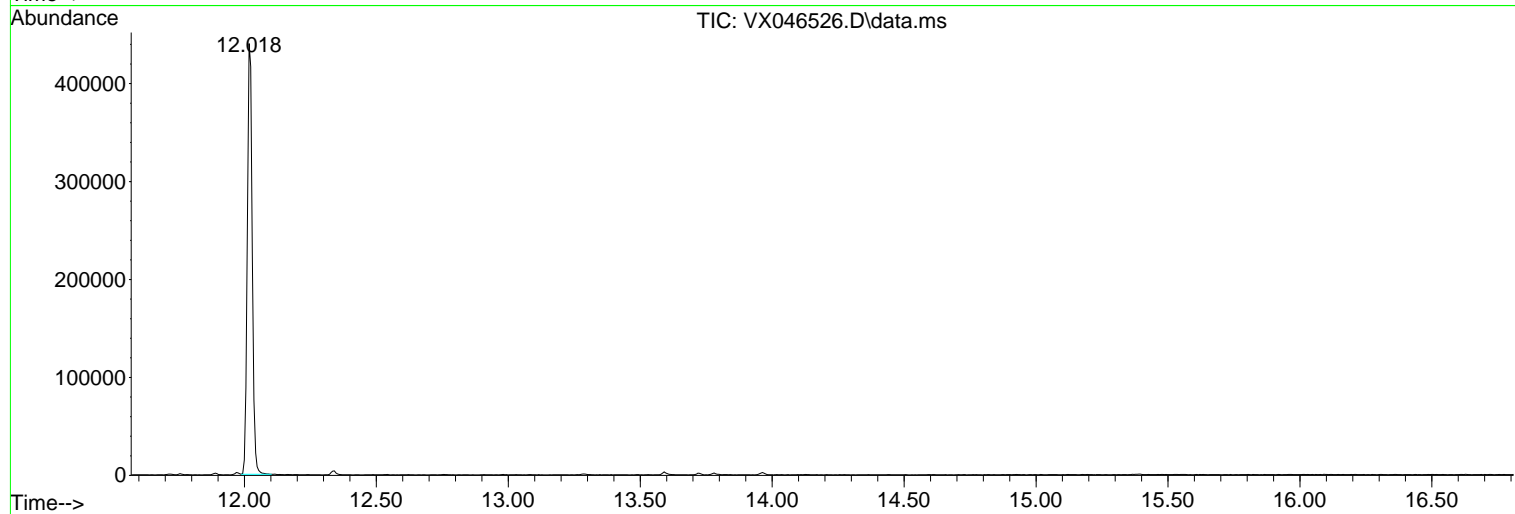
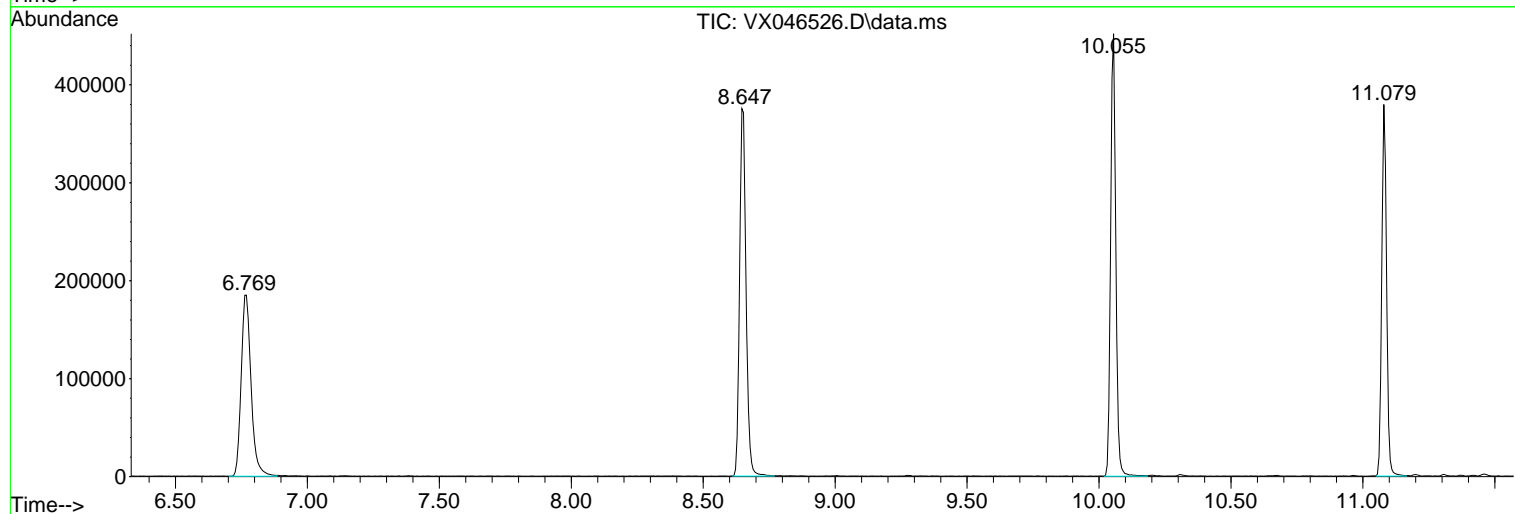
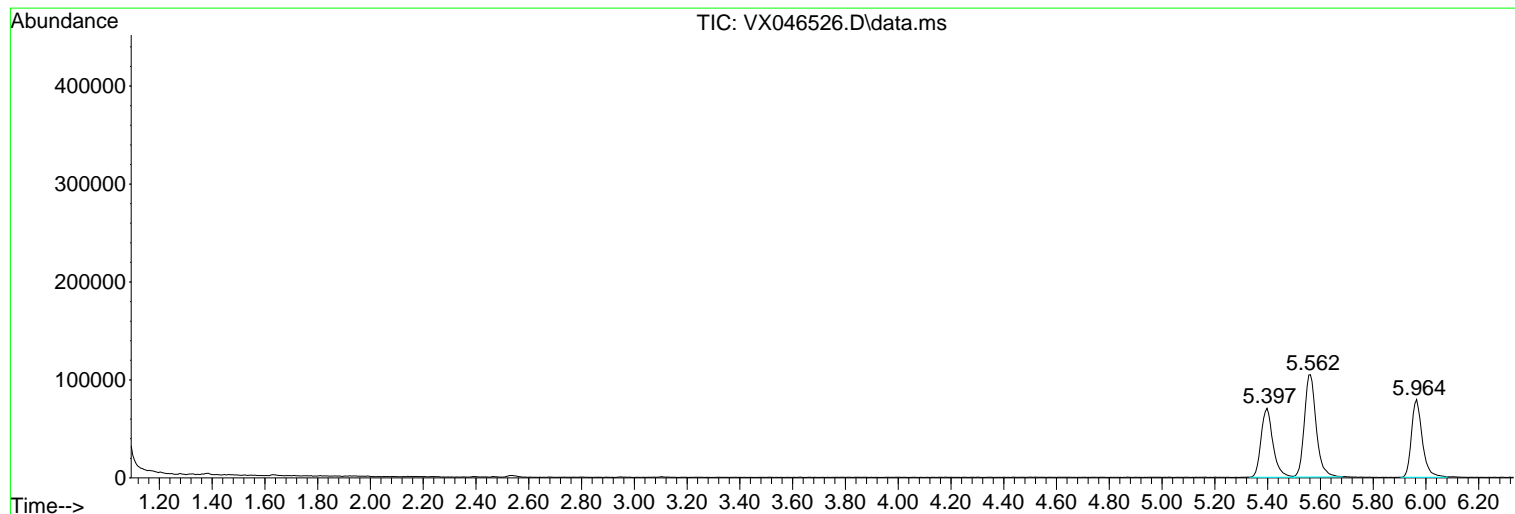
Sum of corrected areas: 3562251

Data Path : Z:\voasrv\HPCHEM1\MSVOA_X\Data\VX060625\
 Data File : VX046526.D
 Acq On : 06 Jun 2025 14:39
 Operator : JC/MD
 Sample : VX0606MBL01
 Misc : 5.00g/10mL/100uL/5.00mL/MSVOA_X/MEOH
 ALS Vial : 11 Sample Multiplier: 1

Instrument :
 MSVOA_X
 ClientSampleId :
 VX0606MBL01

Quant Method : Z:\voasrv\HPCHEM1\MSVOA_X\Method\82X060625W.M
 Quant Title : SW846 8260

TIC Library : C:\Database\NIST20.L
 TIC Integration Parameters: LSCINT.P



Library Search Compound Report

Data Path : Z:\voasrv\HPCHEM1\MSVOA_X\Data\VX060625\
Data File : VX046526.D
Acq On : 06 Jun 2025 14:39
Operator : JC/MD
Sample : VX0606MBL01
Misc : 5.00g/10mL/100uL/5.00mL/MSVOA_X/MEOH
ALS Vial : 11 Sample Multiplier: 1

Instrument :
MSVOA_X
ClientSampleId :
VX0606MBL01

Quant Method : Z:\voasrv\HPCHEM1\MSVOA_X\Method\82X060625W.M
Quant Title : SW846 8260

TIC Library : C:\Database\NIST20.L
TIC Integration Parameters: LSCINT.P

No Library Search Compounds Detected

Data Path : Z:\voasrv\HPCHEM1\MSVOA_X\Data\VX060625\
Data File : VX046526.D
Acq On : 06 Jun 2025 14:39
Operator : JC/MD
Sample : VX0606MBL01
Misc : 5.00g/10mL/100uL/5.00mL/MSVOA_X/MEOH
ALS Vial : 11 Sample Multiplier: 1

Instrument :
MSVOA_X
ClientSampleId :
VX0606MBL01

Quant Method : Z:\voasrv\HPCHEM1\MSVOA_X\Method\82X060625W.M
Quant Title : SW846 8260

TIC Library : C:\Database\NIST20.L
TIC Integration Parameters: LSCINT.P

TIC Top Hit name	RT	EstConc	Units	Response	--Internal Standard--		
					#	RT	Resp Conc
