

Data Path : Z:\voasrv\HPCHEM1\MSVOA_X\Data\VX060625\
 Data File : VX046527.D
 Acq On : 06 Jun 2025 15:02
 Operator : JC/MD
 Sample : VX0606WBL01
 Misc : 5.0mL/MSVOA_X/WATER
 ALS Vial : 12 Sample Multiplier: 1

Instrument :
 MSVOA_X
 ClientSampleId :
 VX0606WBL01

Integration Parameters: RTEINT.P
 Integrator: RTE
 Smoothing : ON Filtering: 5
 Sampling : 1 Min Area: 3 % of largest Peak
 Start Thrs: 0.2 Max Peaks: 100
 Stop Thrs : 0 Peak Location: TOP

If leading or trailing edge < 100 prefer < Baseline drop else tangent >
 Peak separation: 5

Method : Z:\voasrv\HPCHEM1\MSVOA_X\Method\82X060625W.M
 Title : SW846 8260

Signal : TIC: VX046527.D\data.ms

peak #	R.T. min	first scan	max scan	last scan	PK TY	peak height	corr. area	corr. % max.	% of total
1	5.403	696	708	726	rBV2	80707	253257	32.12%	5.812%
2	5.568	726	735	754	rVB	124407	378575	48.02%	8.687%
3	5.970	791	801	821	rBV	93909	265648	33.69%	6.096%
4	6.775	923	933	959	rBV	217196	556413	70.57%	12.768%
5	8.653	1234	1241	1258	rBV	491462	788404	100.00%	18.092%
6	10.055	1465	1471	1487	rBV	557819	760173	96.42%	17.444%
7	11.079	1634	1639	1650	rBV	460886	604345	76.65%	13.868%
8	12.018	1788	1793	1811	rBV	585878	751030	95.26%	17.234%

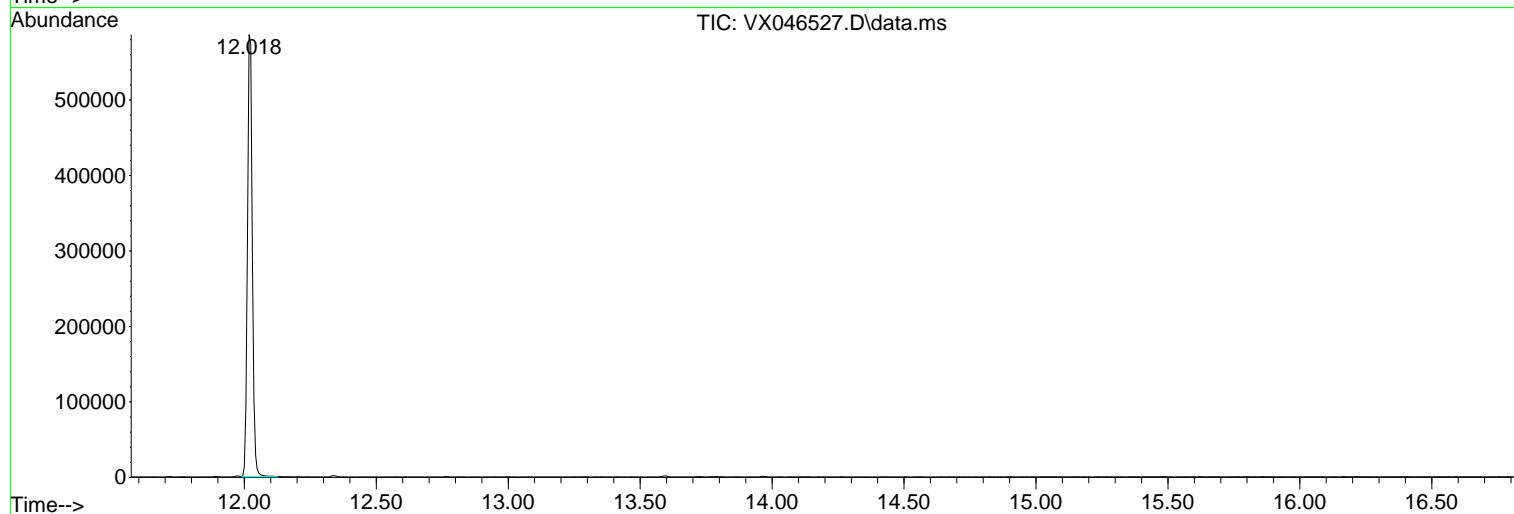
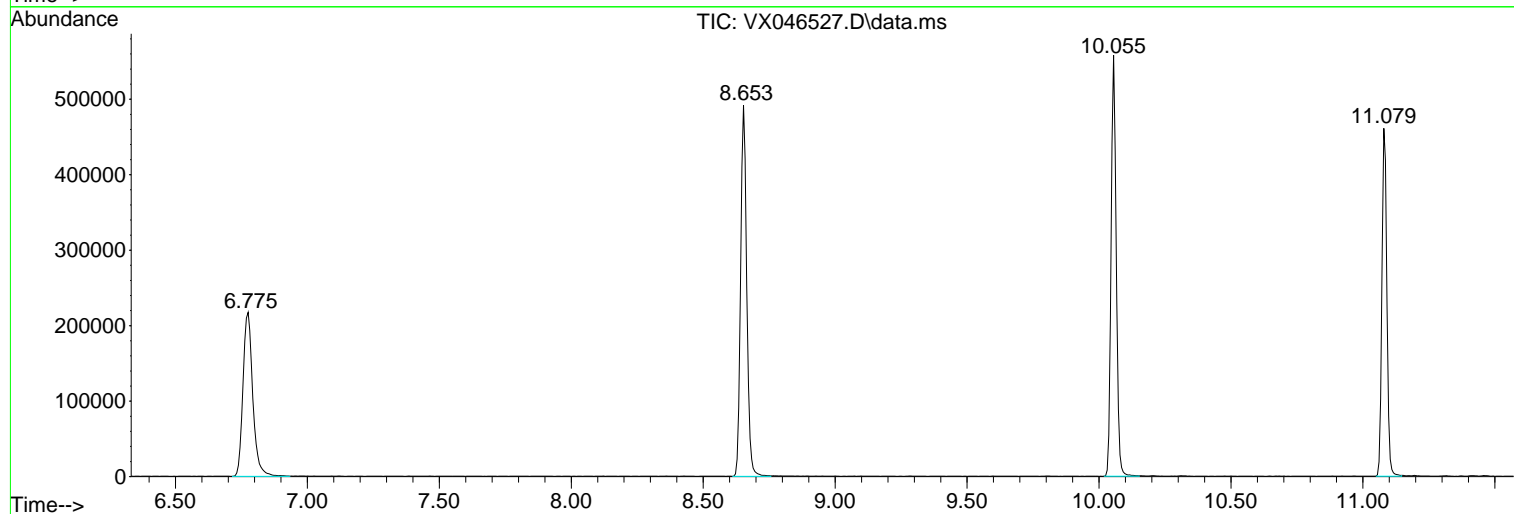
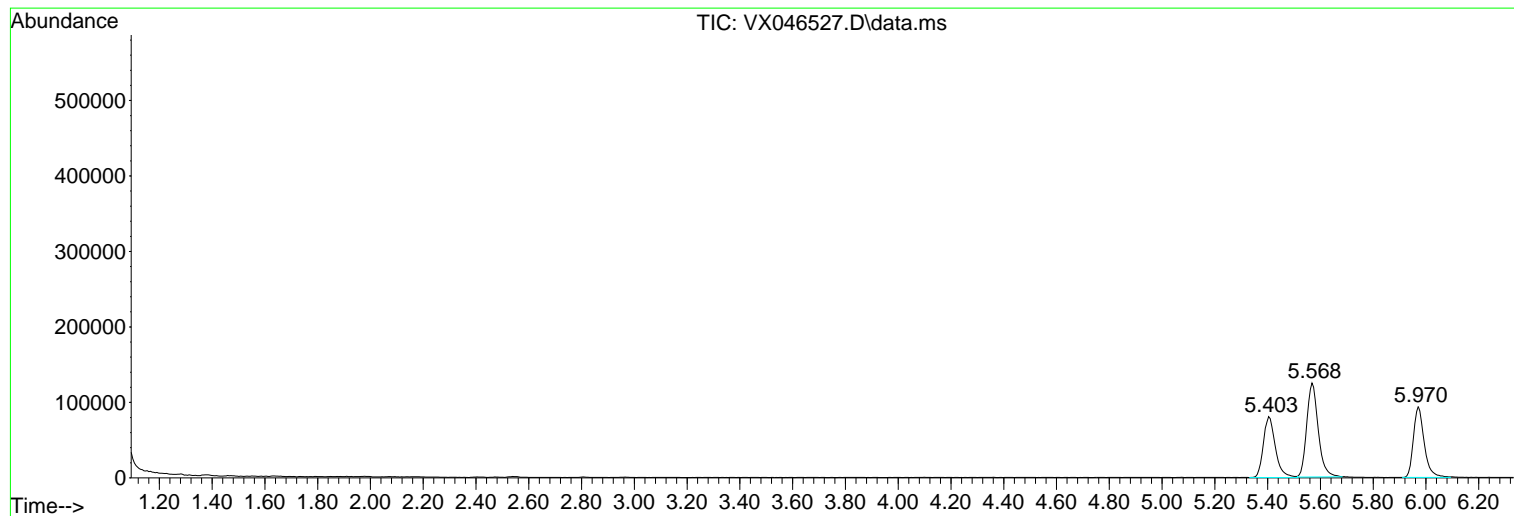
Sum of corrected areas: 4357845

Data Path : Z:\voasrv\HPCHEM1\MSVOA_X\Data\VX060625\
Data File : VX046527.D
Acq On : 06 Jun 2025 15:02
Operator : JC/MD
Sample : VX0606WBL01
Misc : 5.0mL/MSVOA_X/WATER
ALS Vial : 12 Sample Multiplier: 1

Instrument :
MSVOA_X
ClientSampleId :
VX0606WBL01

Quant Method : Z:\voasrv\HPCHEM1\MSVOA_X\Method\82X060625W.M
Quant Title : SW846 8260

TIC Library : C:\Database\NIST20.L
TIC Integration Parameters: LSCINT.P



Library Search Compound Report

Data Path : Z:\voasrv\HPCHEM1\MSVOA_X\Data\VX060625\
Data File : VX046527.D
Acq On : 06 Jun 2025 15:02
Operator : JC/MD
Sample : VX0606WBL01
Misc : 5.0mL/MSVOA_X/WATER
ALS Vial : 12 Sample Multiplier: 1

Instrument :
MSVOA_X
ClientSampleId :
VX0606WBL01

Quant Method : Z:\voasrv\HPCHEM1\MSVOA_X\Method\82X060625W.M
Quant Title : SW846 8260

TIC Library : C:\Database\NIST20.L
TIC Integration Parameters: LSCINT.P

No Library Search Compounds Detected

Data Path : Z:\voasrv\HPCHEM1\MSVOA_X\Data\VX060625\
Data File : VX046527.D
Acq On : 06 Jun 2025 15:02
Operator : JC/MD
Sample : VX0606WBL01
Misc : 5.0mL/MSVOA_X/WATER
ALS Vial : 12 Sample Multiplier: 1

Instrument :
MSVOA_X
ClientSampleId :
VX0606WBL01

Quant Method : Z:\voasrv\HPCHEM1\MSVOA_X\Method\82X060625W.M
Quant Title : SW846 8260

TIC Library : C:\Database\NIST20.L
TIC Integration Parameters: LSCINT.P

TIC Top Hit name	RT	EstConc	Units	Response	--Internal Standard--			
					#	RT	Resp	Conc
