

Data Path : Z:\VOASRV\HPCHEM1\MSVOA X\DATA\VX060719\  
 Data File : VX010111.D  
 Acq On : 07 Jun 2019 16:17  
 Operator : JC/SP  
 Sample : VX0607MBL01  
 Misc : 5.00µ/10mL/100uL/5.0mL/MSVOA\_X/MEOH  
 ALS Vial : 12 Sample Multiplier: 1

Instrument :  
 MSVOA\_X  
 ClientSampled :  
 VX0607MBL01

Quant Time: Jun 08 02:20:00 2019  
 Quant Method : Z:\VOASRV\HPCHEM1\MSVOA\_X\METHOD\82X060719W.M  
 Quant Title : SW846 8260  
 QLast Update : Sat Jun 08 02:12:13 2019  
 Response via : Initial Calibration

Internal Standards	R.T.	QIon	Response	Conc	Units	Dev(Min)
1) Pentafluorobenzene	5.66	168	333907	50.00	µg/l	0.00
34) 1,4-Difluorobenzene	6.86	114	507341	50.00	µg/l	0.00
63) Chlorobenzene-d5	10.11	117	453424	50.00	µg/l	0.00
72) 1,4-Dichlorobenzene-d4	12.08	152	209077	50.00	µg/l	0.00

## System Monitoring Compounds

33) 1,2-Dichloroethane-d4	6.06	65	155971	47.85	µg/l	0.00
Spiked Amount	50.000		Recovery	=	95.70%	
35) Dibromofluoromethane	5.50	113	156787	50.10	µg/l	0.00
Spiked Amount	50.000		Recovery	=	100.20%	
50) Toluene-d8	8.71	98	595933	50.81	µg/l	0.00
Spiked Amount	50.000		Recovery	=	101.62%	
62) 4-Bromofluorobenzene	11.13	95	211192	48.22	µg/l	0.00
Spiked Amount	50.000		Recovery	=	96.44%	

## Target Compounds

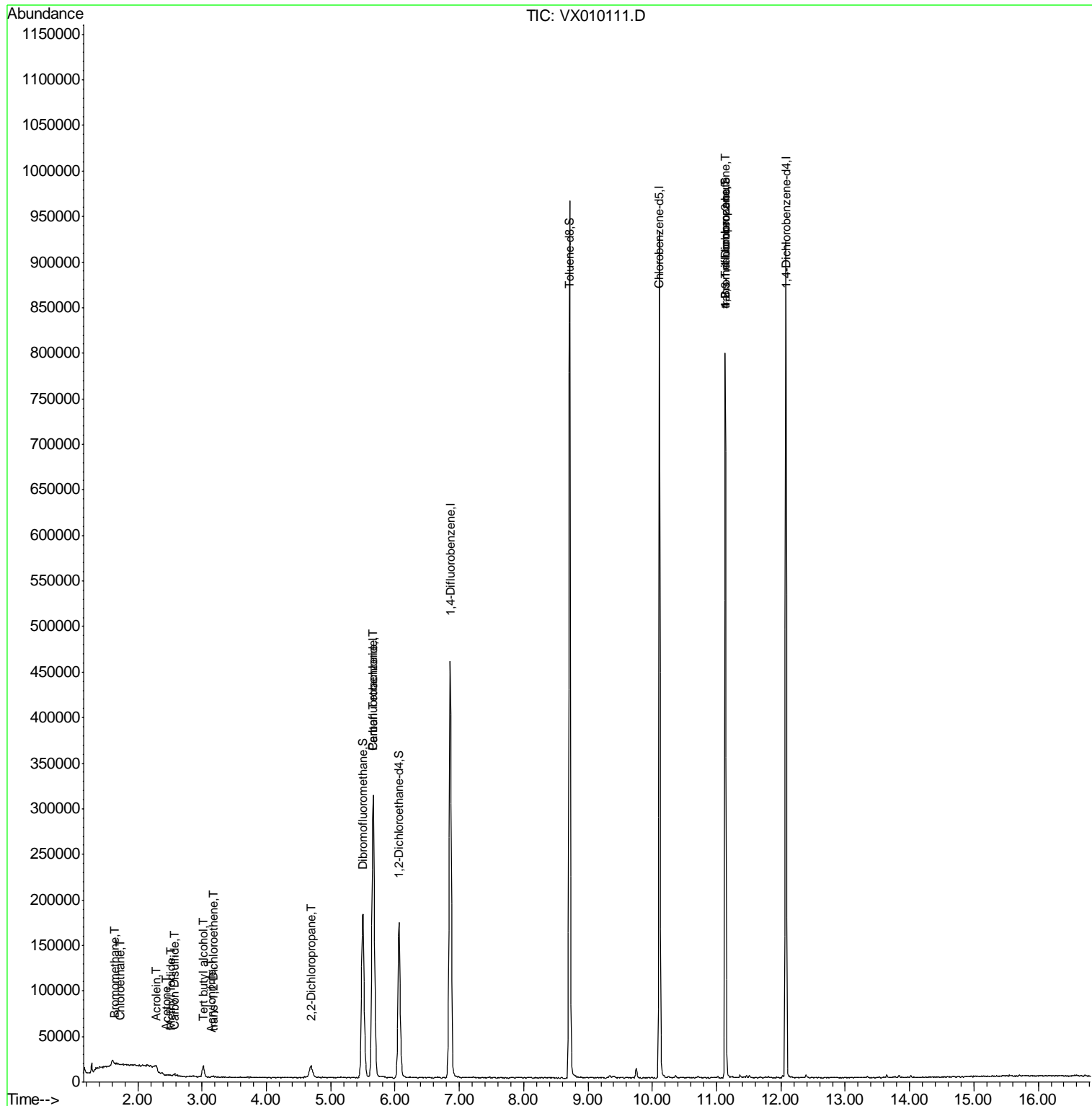
						Qvalue
5) Bromomethane	1.65	94	417	0.385	µg/l #	67
6) Chloroethane	1.73	64	421	0.291	µg/l #	56
10) Methyl Iodide	2.51	142	1188	0.261	µg/l #	86
11) Tert butyl alcohol	3.02	59	6978	8.740	µg/l #	80
13) Acrolein	2.29	56	286	1.964	µg/l #	14
15) Acrylonitrile	3.14	53	404	0.248	µg/l #	63
16) Acetone	2.44	43	558	0.364	µg/l #	84
17) Carbon Disulfide	2.57	76	2915	0.336	µg/l	96
21) trans-1,2-Dichloroethene	3.17	96	720	0.217	µg/l #	55
26) 2,2-Dichloropropane	4.68	77	1621	0.338	µg/l	79
38) Carbon Tetrachloride	5.66	117	28595	6.104	µg/l #	15
76) 1,2,3-Trichloropropane	11.13	75	96457	23.065	µg/l #	34
81) trans-1,4-Dichloro-2-buten	11.13	75	96457	50.961	µg/l #	10

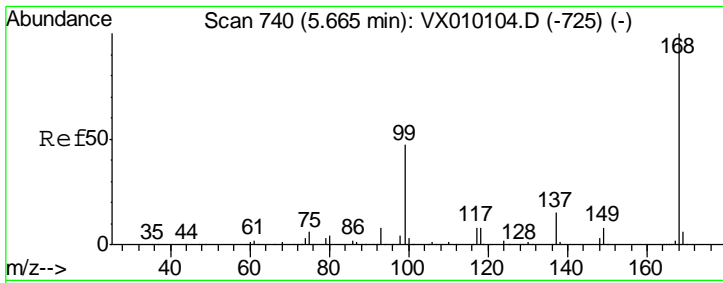
(#) = qualifier out of range (m) = manual integration (+) = signals summed

Data Path : Z:\VOASRV\HPCHEM1\MSVOA X\DATA\VX060719\  
 Data File : VX010111.D  
 Acq On : 07 Jun 2019 16:17  
 Operator : JC/SP  
 Sample : VX0607MBL01  
 Misc : 5.00µ/10mL/100uL/5.0mL/MSVOA\_X/MEOH  
 ALS Vial : 12 Sample Multiplier: 1

Instrument :  
 MSVOA\_X  
 Client Sampled :  
 VX0607MBL01

Quant Time: Jun 08 02:20:00 2019  
 Quant Method : Z:\VOASRV\HPCHEM1\MSVOA\_X\METHOD\82X060719W.M  
 Quant Title : SW846 8260  
 QLast Update : Sat Jun 08 02:12:13 2019  
 Response via : Initial Calibration

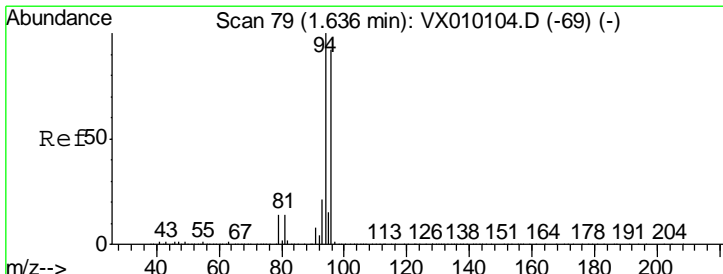
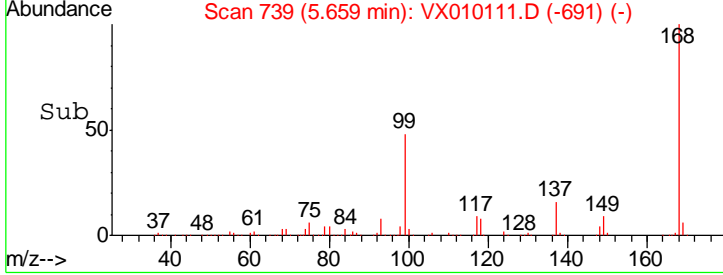
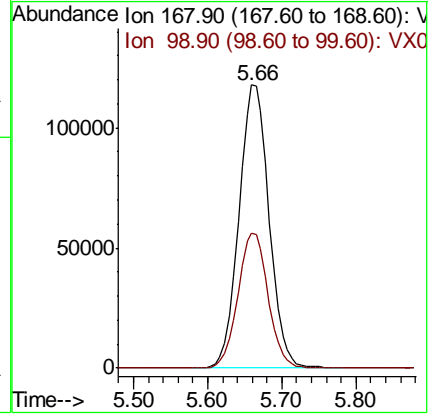
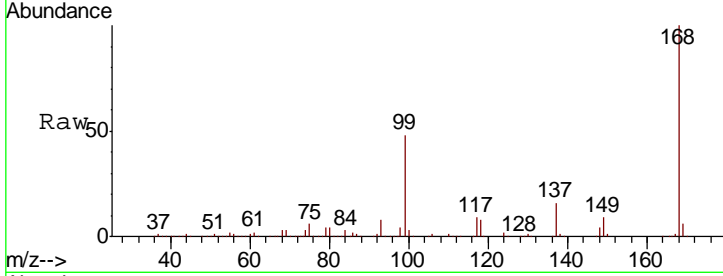




#1  
 Pentafluorobenzene  
 Concen: 50.000 ug/l  
 RT: 5.66 min Scan# 739  
 Delta R.T. -0.01 min  
 Lab File: VX010111.D  
 Acq: 07 Jun 2019 16:17

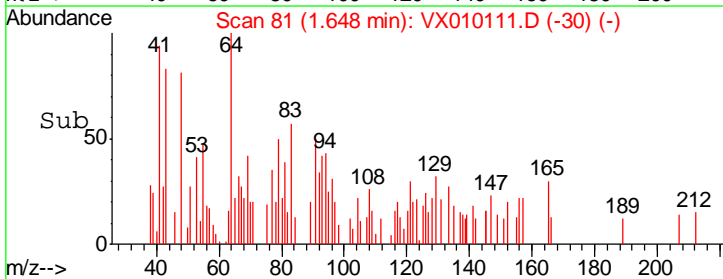
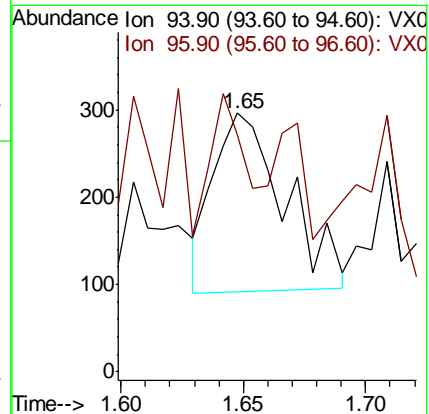
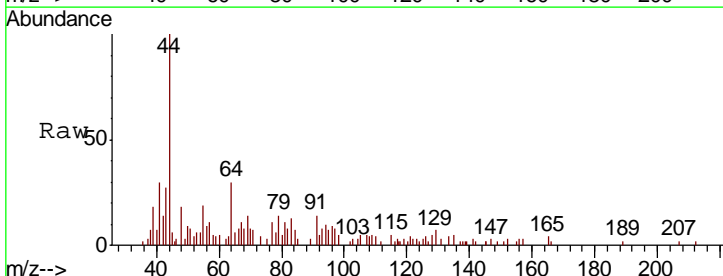
Instrument : MSVOA\_X  
 ClientSampled : VX0607MBL01

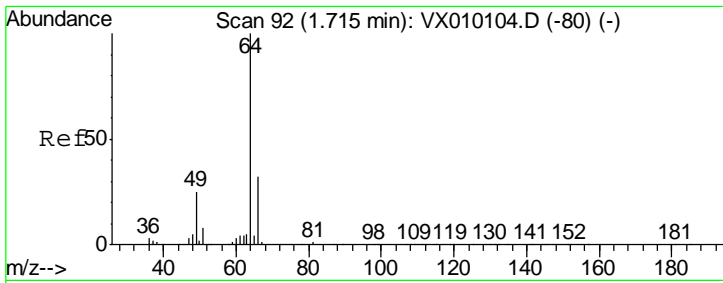
Tgt Ion	Resp	Lower	Upper
168	100		
99	47.7	43.0	64.6



#5  
 Bromomethane  
 Concen: 0.385 ug/l  
 RT: 1.65 min Scan# 81  
 Delta R.T. 0.01 min  
 Lab File: VX010111.D  
 Acq: 07 Jun 2019 16:17

Tgt Ion	Resp	Lower	Upper
94	100		
96	63.4	76.2	114.4#

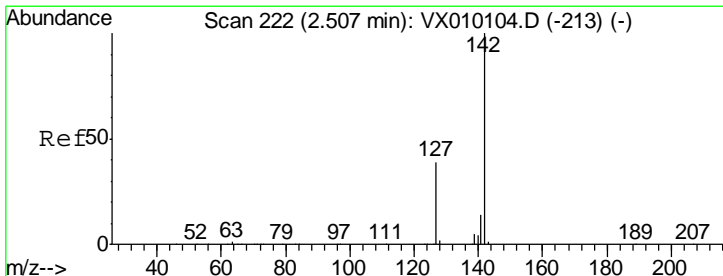
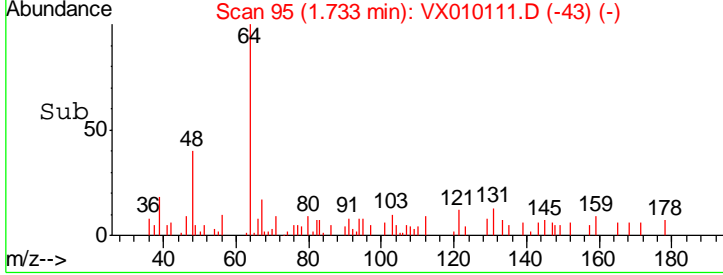
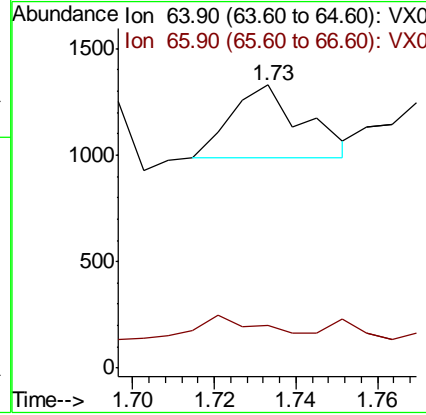
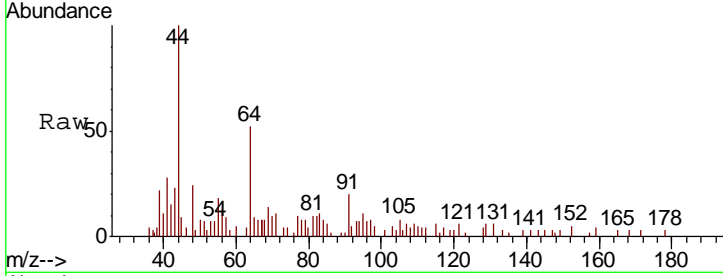




#6  
 Chloroethane  
 Concen: 0.291 ug/l  
 RT: 1.73 min Scan# 95  
 Delta R.T. 0.02 min  
 Lab File: VX010111.D  
 Acq: 07 Jun 2019 16:17

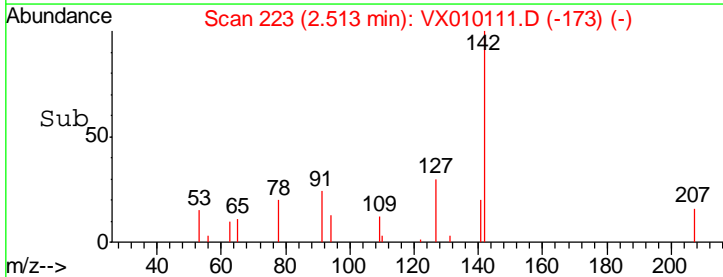
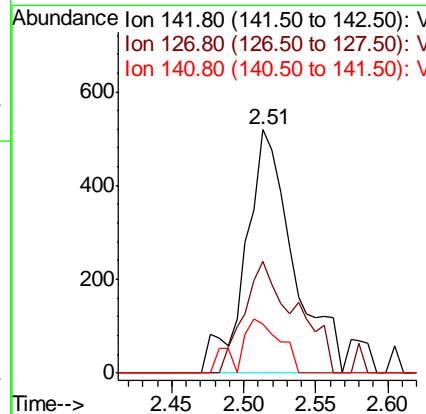
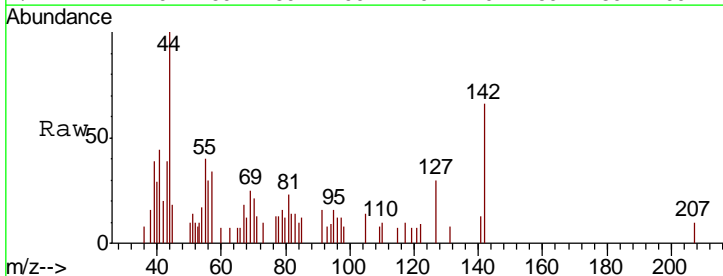
Instrument :  
 MSVOA\_X  
 ClientSampled :  
 VX0607MBL01

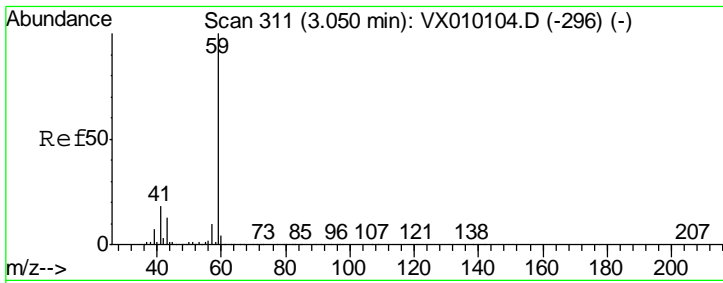
Tgt Ion	Resp	Lower	Upper
64	421		
66	7.0	25.1	37.7#



#10  
 Methyl Iodide  
 Concen: 0.261 ug/l  
 RT: 2.51 min Scan# 223  
 Delta R.T. 0.01 min  
 Lab File: VX010111.D  
 Acq: 07 Jun 2019 16:17

Tgt Ion	Resp	Lower	Upper
142	1188		
127	50.2	33.0	49.4#
141	19.2	11.4	17.0#

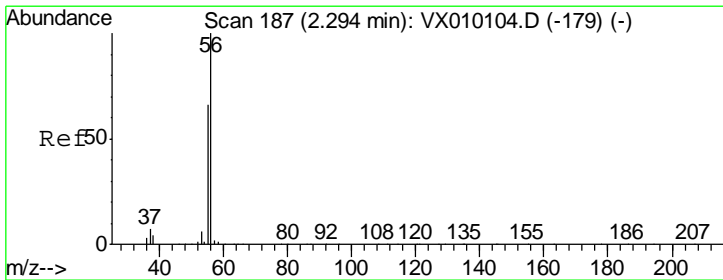
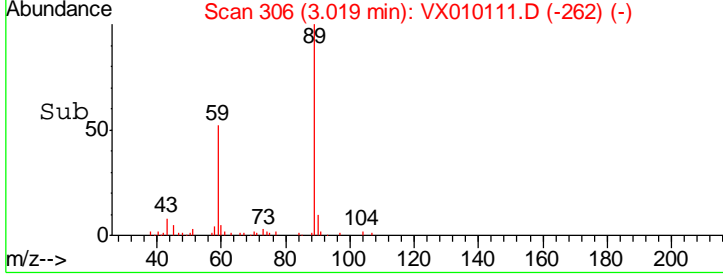
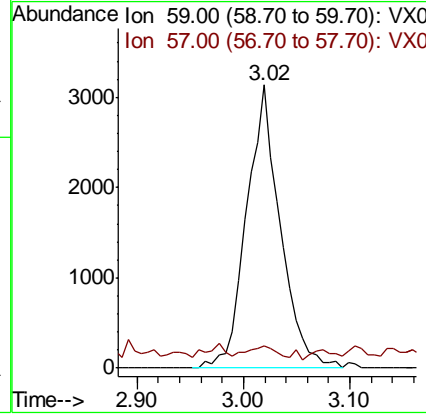
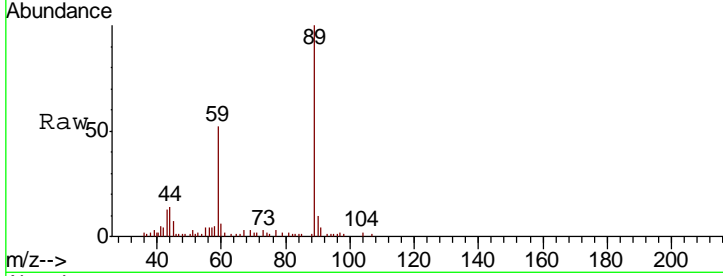




#11  
 Tert butyl alcohol  
 Concen: 8.740 ug/l  
 RT: 3.02 min Scan# 306  
 Delta R.T. -0.03 min  
 Lab File: VX010111.D  
 Acq: 07 Jun 2019 16:17

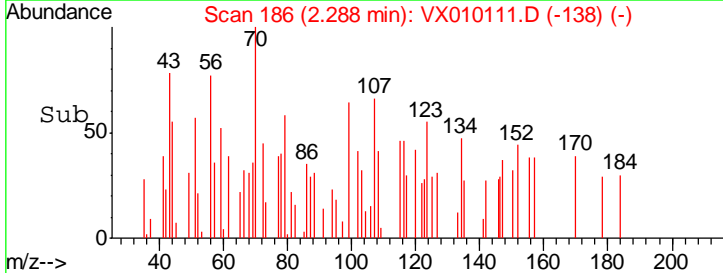
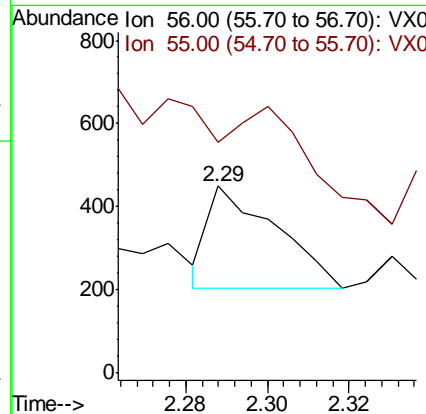
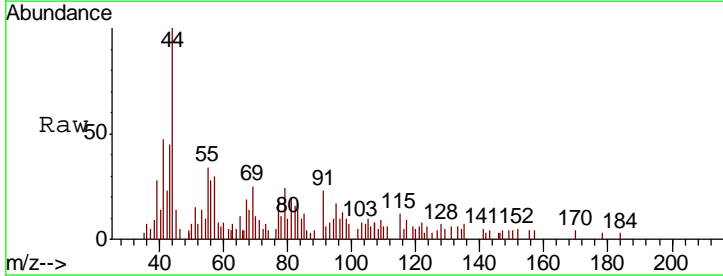
Instrument :  
 MSVOA\_X  
 ClientSampled :  
 VX0607MBL01

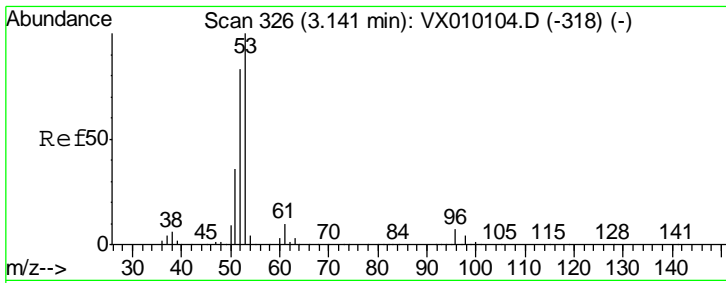
Tgt Ion: 59 Resp: 6978  
 Ion Ratio Lower Upper  
 59 100  
 57 2.9 8.2 12.2#



#13  
 Acrolein  
 Concen: 1.964 ug/l  
 RT: 2.29 min Scan# 186  
 Delta R.T. -0.01 min  
 Lab File: VX010111.D  
 Acq: 07 Jun 2019 16:17

Tgt Ion: 56 Resp: 286  
 Ion Ratio Lower Upper  
 56 100  
 55 0.0 57.0 85.4#

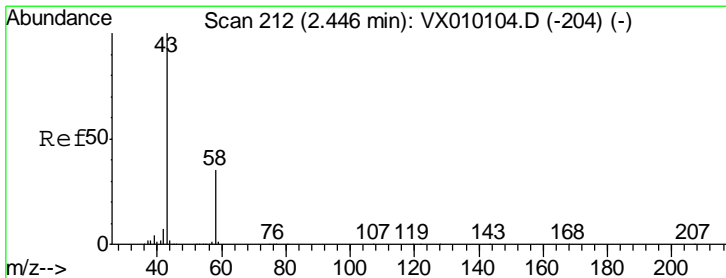
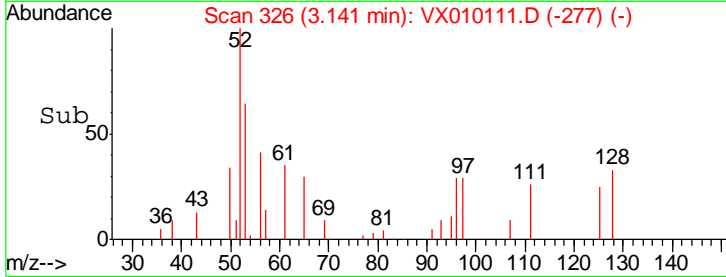
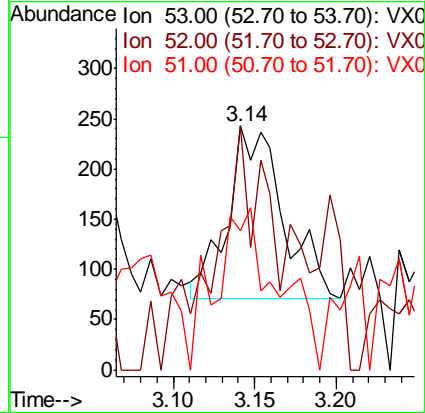
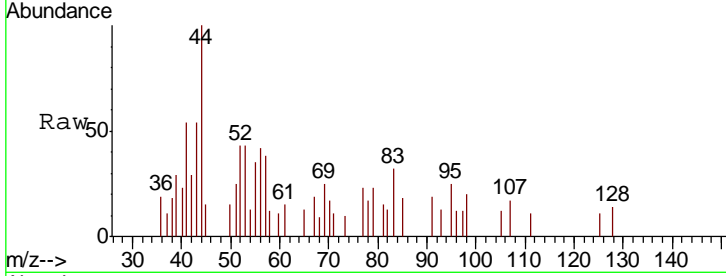




#15  
 Acrylonitrile  
 Concen: 0.248 ug/l  
 RT: 3.14 min Scan# 326  
 Delta R.T. -0.00 min  
 Lab File: VX010111.D  
 Acq: 07 Jun 2019 16:17

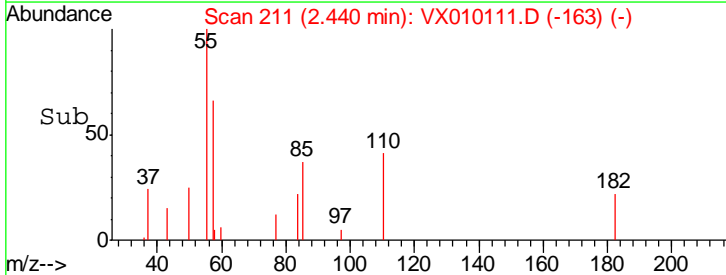
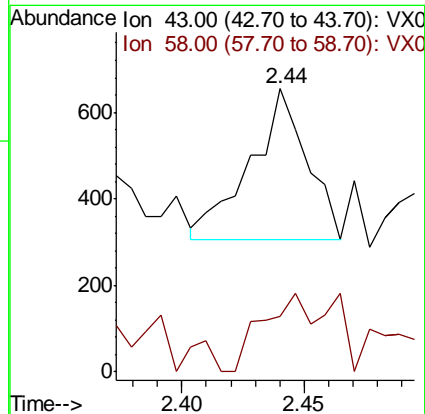
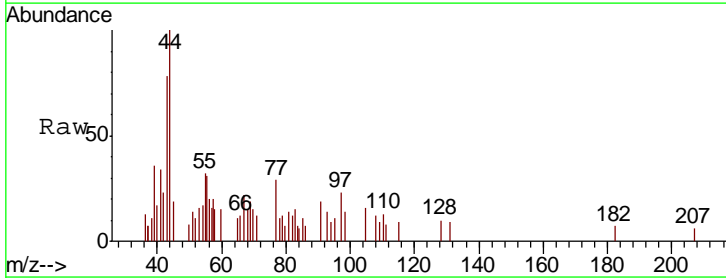
Instrument :  
 MSVOA\_X  
 ClientSampled :  
 VX0607MBL01

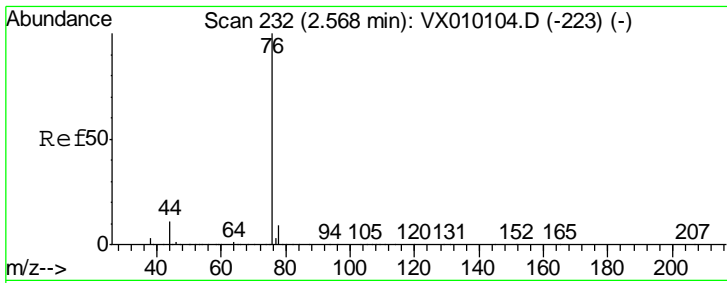
Tgt Ion	Resp	Lower	Upper
53	100		
52	99.3	66.7	100.1
51	84.9	28.8	43.2#



#16  
 Acetone  
 Concen: 0.364 ug/l  
 RT: 2.44 min Scan# 211  
 Delta R.T. -0.01 min  
 Lab File: VX010111.D  
 Acq: 07 Jun 2019 16:17

Tgt Ion	Resp	Lower	Upper
43	100		
58	20.4	23.2	34.8#

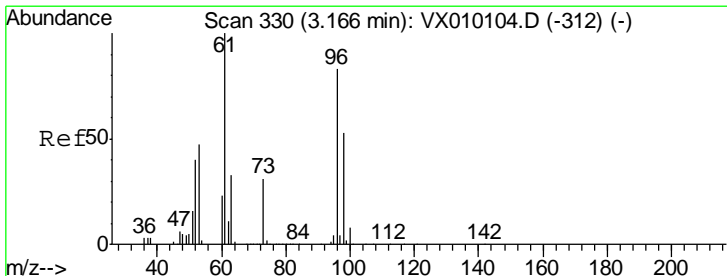
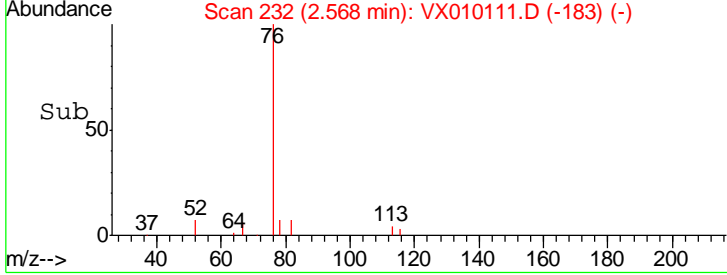
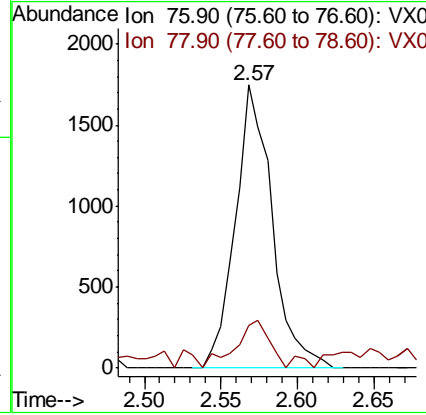
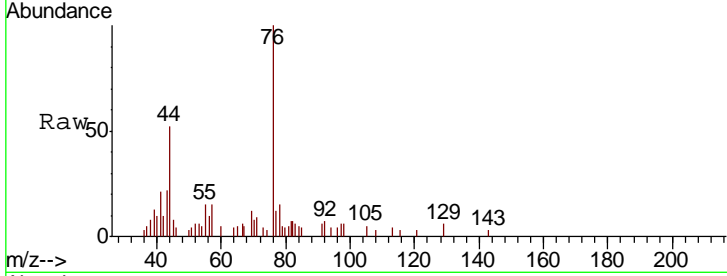




#17  
 Carbon Disulfide  
 Concen: 0.336 ug/l  
 RT: 2.57 min Scan# 232  
 Delta R.T. -0.00 min  
 Lab File: VX010111.D  
 Acq: 07 Jun 2019 16:17

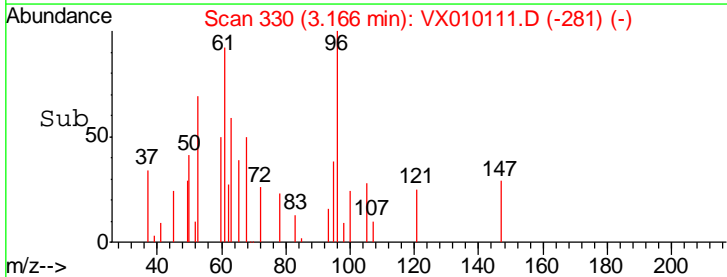
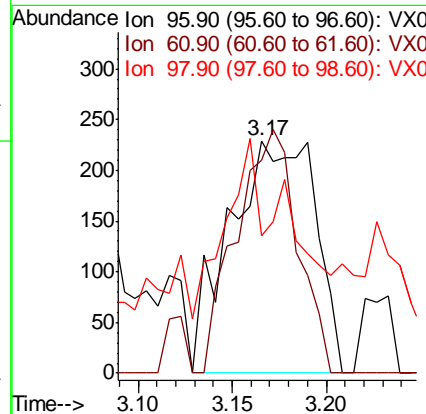
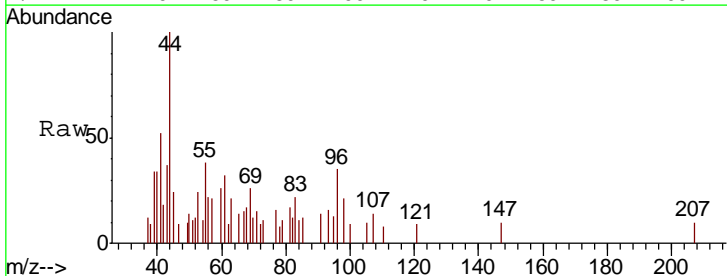
**Instrument :**  
 MSVOA\_X  
**ClientSampled :**  
 VX0607MBL01

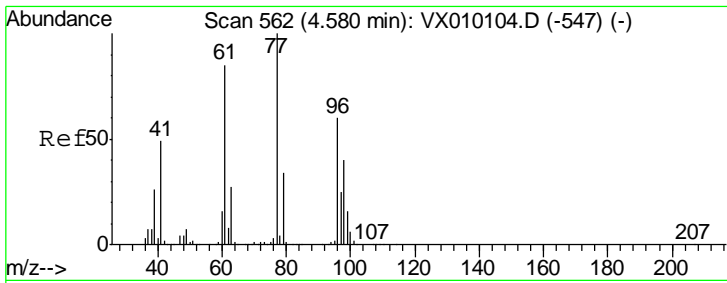
Tgt Ion	Resp	Lower	Upper
76	2915		
78	10.4	7.0	10.6



#21  
 trans-1,2-Dichloroethene  
 Concen: 0.217 ug/l  
 RT: 3.17 min Scan# 330  
 Delta R.T. -0.00 min  
 Lab File: VX010111.D  
 Acq: 07 Jun 2019 16:17

Tgt Ion	Resp	Lower	Upper
96	720		
61	91.7	125.7	188.5#
98	36.2	49.0	73.6#

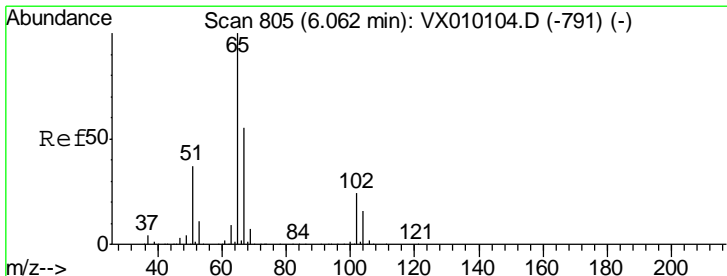
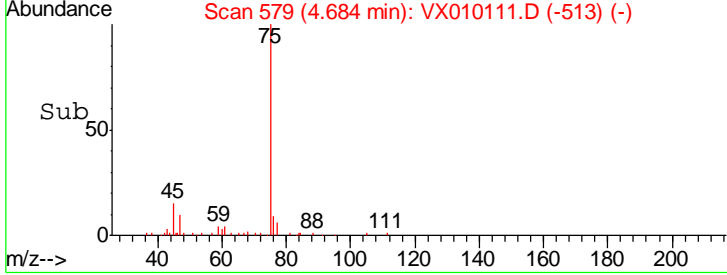
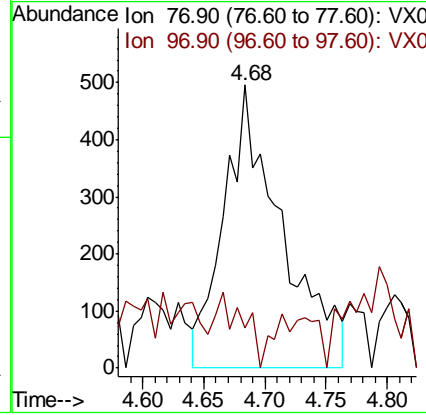
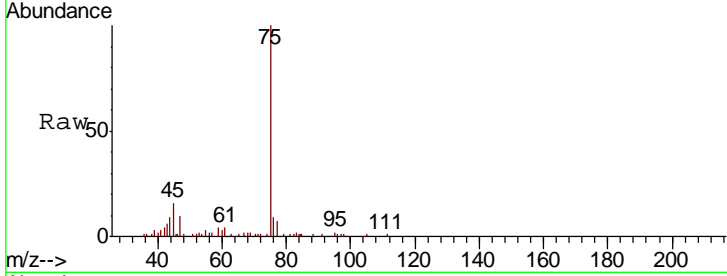




#26  
 2,2-Dichloropropane  
 Concen: 0.338 ug/l  
 RT: 4.68 min Scan# 579  
 Delta R.T. 0.10 min  
 Lab File: VX010111.D  
 Acq: 07 Jun 2019 16:17

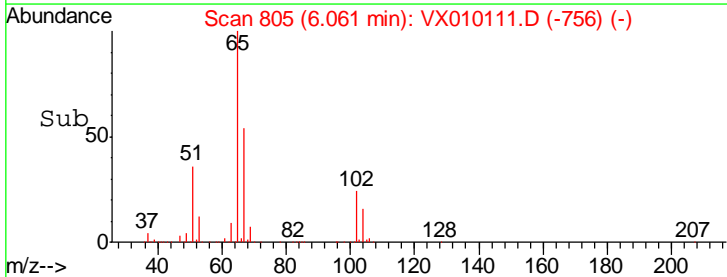
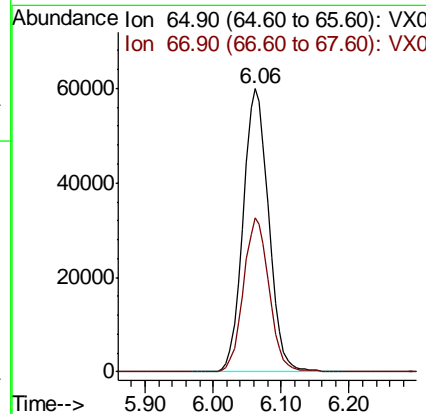
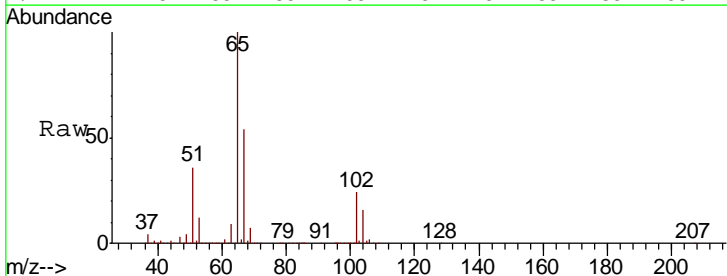
**Instrument :**  
 MSVOA\_X  
**ClientSampled :**  
 VX0607MBL01

Tgt Ion	Resp	Lower	Upper
77	100		
97	12.8	11.4	34.2

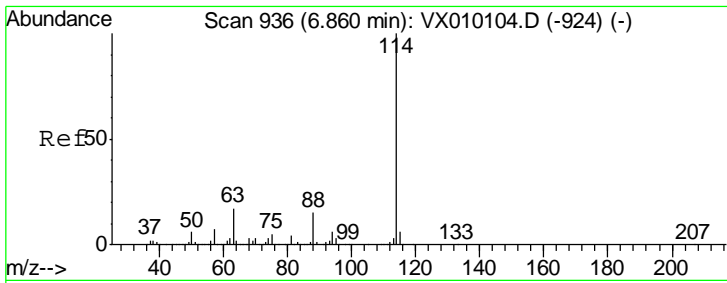


#33  
 1,2-Dichloroethane-d4  
 Concen: 47.854 ug/l  
 RT: 6.06 min Scan# 805  
 Delta R.T. 0.00 min  
 Lab File: VX010111.D  
 Acq: 07 Jun 2019 16:17

Tgt Ion	Resp	Lower	Upper
65	100		
67	53.9	0.0	108.4



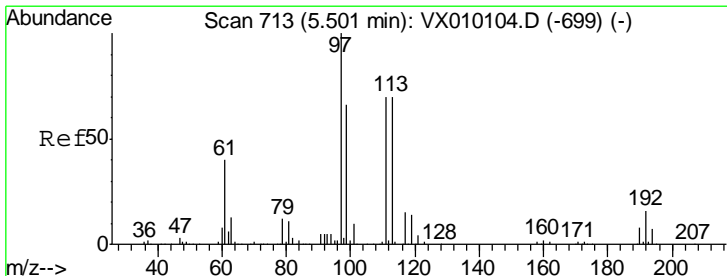
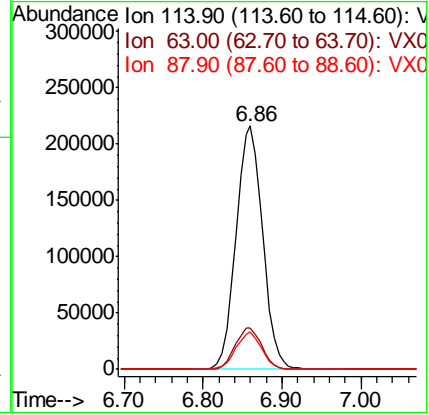
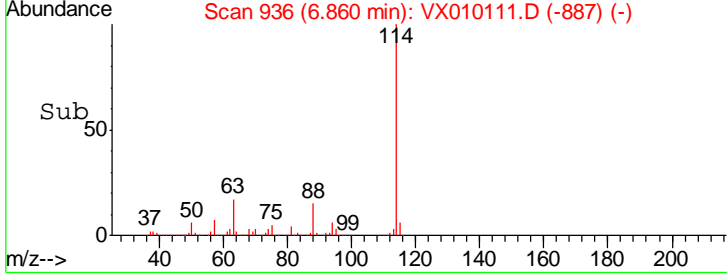
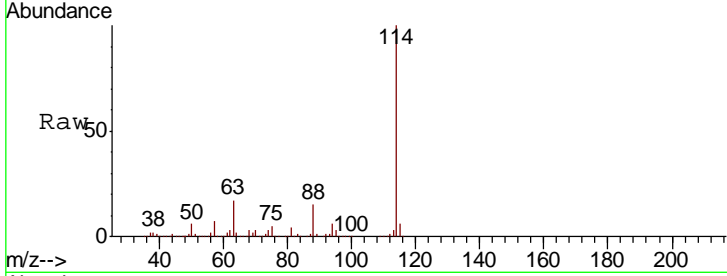




#34  
 1,4-Difluorobenzene  
 Concen: 50.000 ug/l  
 RT: 6.86 min Scan# 936  
 Delta R.T. -0.00 min  
 Lab File: VX010111.D  
 Acq: 07 Jun 2019 16:17

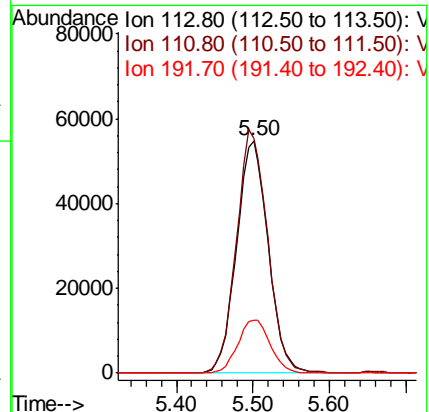
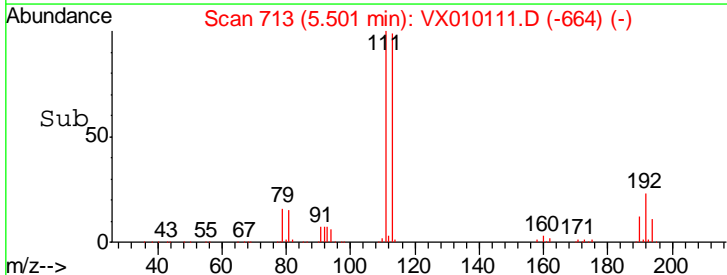
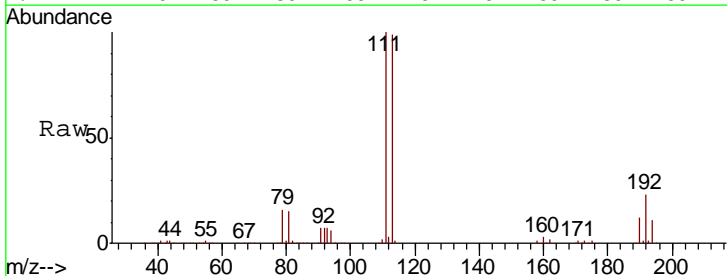
Instrument : MSVOA\_X  
 ClientSampled : VX0607MBL01

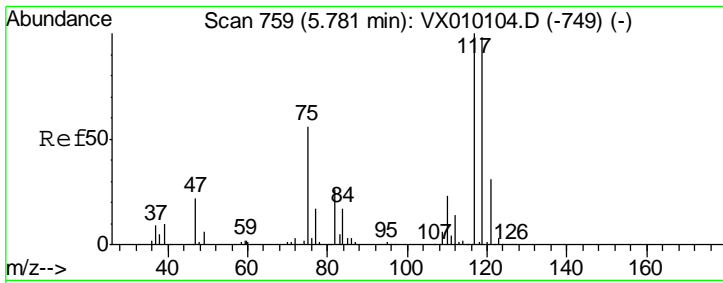
Tgt Ion	Resp	Lower	Upper
114	100		
63	17.1	0.0	47.4
88	15.3	0.0	33.0



#35  
 Dibromofluoromethane  
 Concen: 50.101 ug/l  
 RT: 5.50 min Scan# 713  
 Delta R.T. -0.00 min  
 Lab File: VX010111.D  
 Acq: 07 Jun 2019 16:17

Tgt Ion	Resp	Lower	Upper
113	100		
111	103.5	82.2	123.2
192	23.4	17.1	25.7

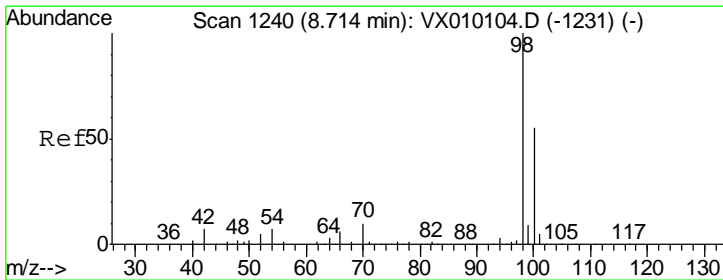
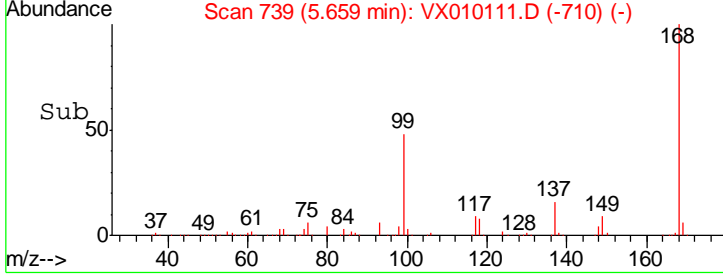
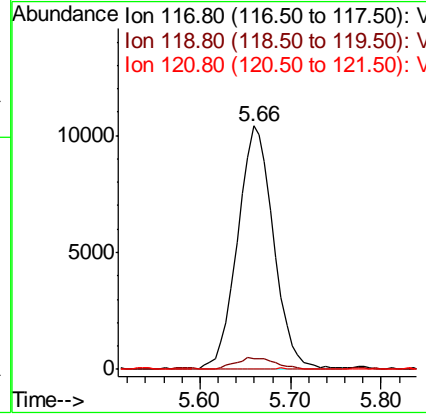
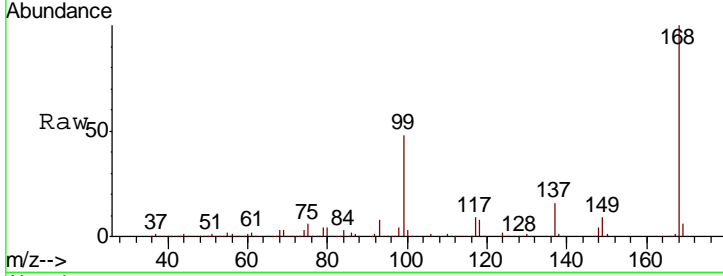




#38  
 Carbon Tetrachloride  
 Concen: 6.104 ug/l  
 RT: 5.66 min Scan# 739  
 Delta R.T. -0.12 min  
 Lab File: VX010111.D  
 Acq: 07 Jun 2019 16:17

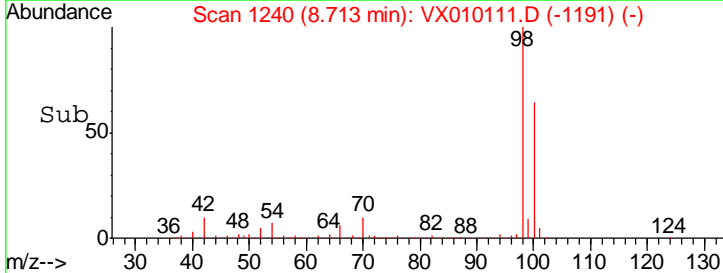
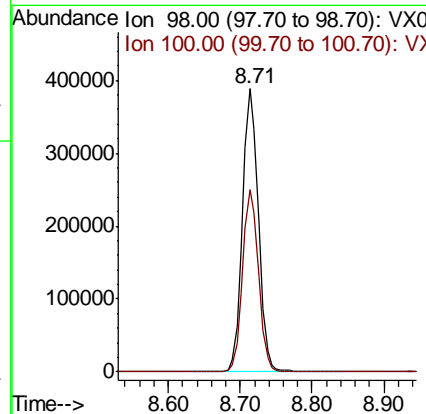
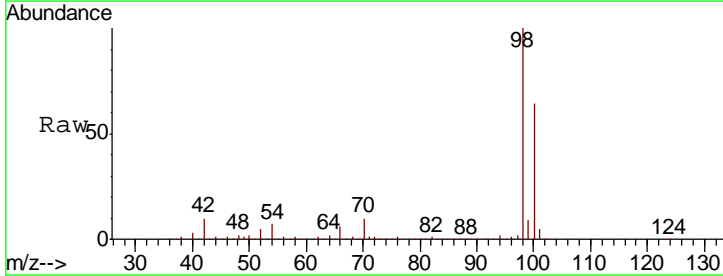
**Instrument :**  
 MSVOA\_X  
**ClientSampled :**  
 VX0607MBL01

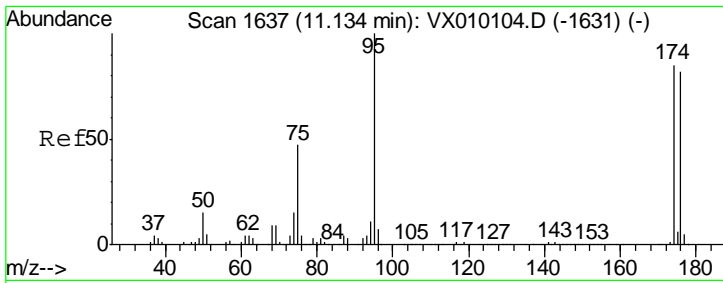
Tgt Ion	Resp	Lower	Upper
117	28595		
119	4.2	77.3	115.9#
121	0.0	25.4	38.0#



#50  
 Toluene-d8  
 Concen: 50.811 ug/l  
 RT: 8.71 min Scan# 1240  
 Delta R.T. 0.00 min  
 Lab File: VX010111.D  
 Acq: 07 Jun 2019 16:17

Tgt Ion	Resp	Lower	Upper
98	595933		
100	64.6	51.5	77.3

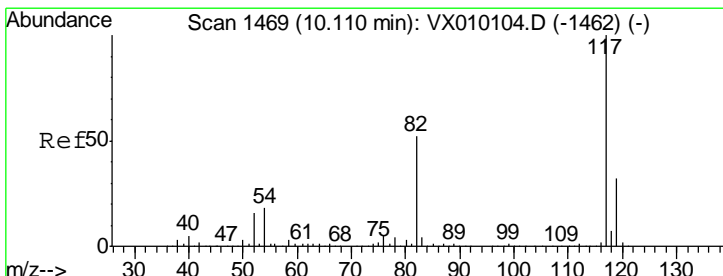
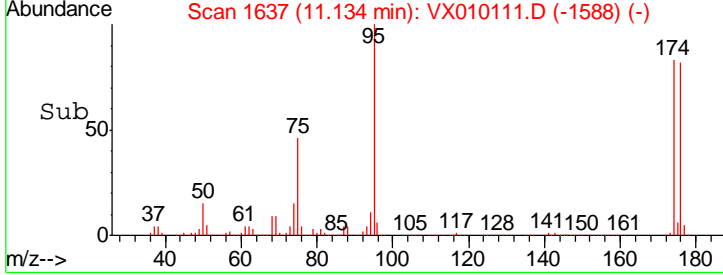
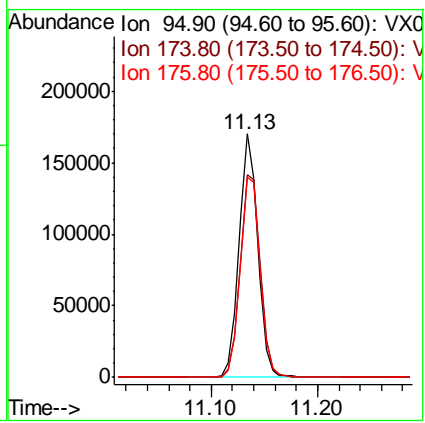
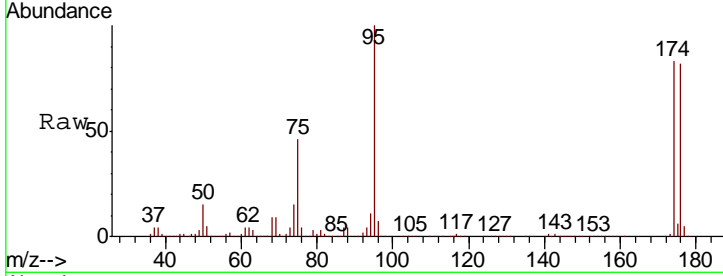




#62  
 4-Bromofluorobenzene  
 Concen: 48.216 ug/l  
 RT: 11.13 min Scan# 1637  
 Delta R.T. 0.00 min  
 Lab File: VX010111.D  
 Acq: 07 Jun 2019 16:17

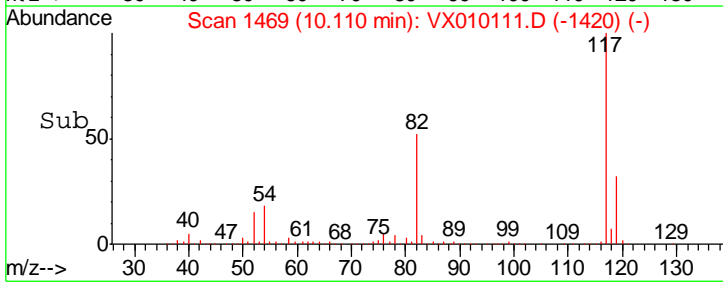
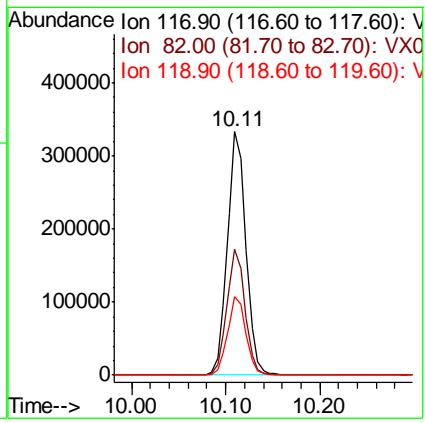
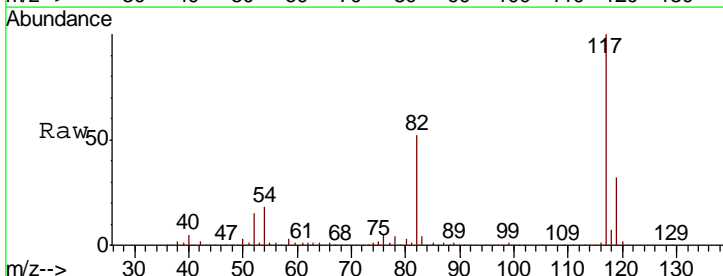
Instrument : MSVOA\_X  
 ClientSampled : VX0607MBL01

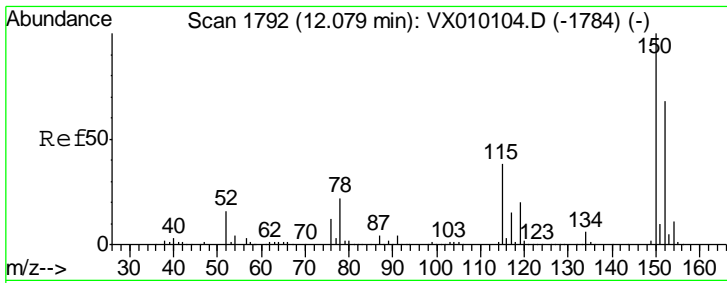
Tgt Ion	Resp	Lower	Upper
95	211192		
174	89.2	0.0	160.4
176	87.0	0.0	154.6



#63  
 Chlorobenzene-d5  
 Concen: 50.000 ug/l  
 RT: 10.11 min Scan# 1469  
 Delta R.T. -0.00 min  
 Lab File: VX010111.D  
 Acq: 07 Jun 2019 16:17

Tgt Ion	Resp	Lower	Upper
117	453424		
82	51.6	49.2	73.8
119	32.1	25.2	37.8

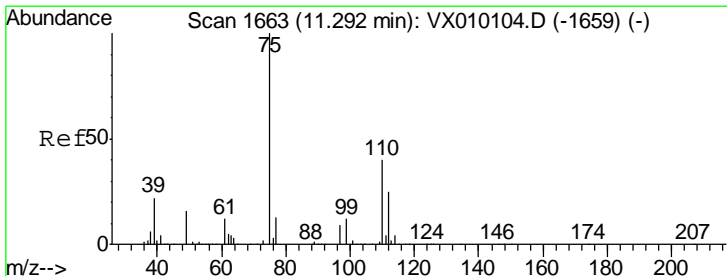
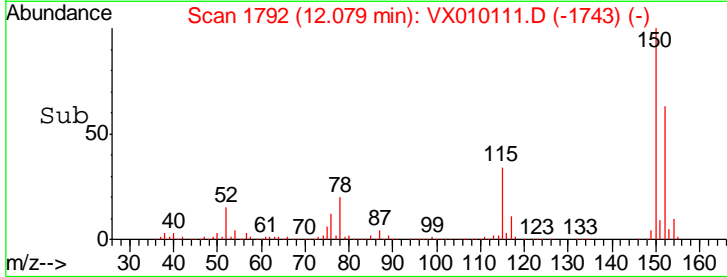
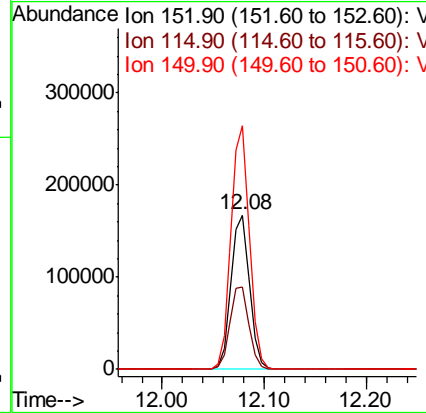
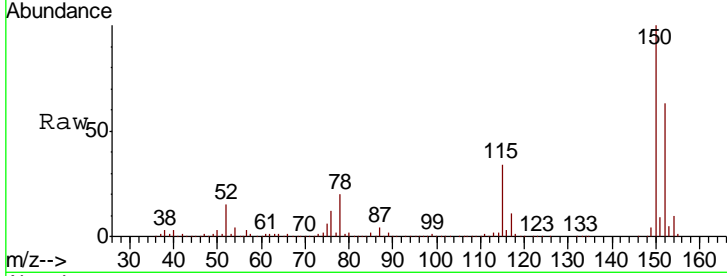




#72  
 1,4-Dichlorobenzene-d4  
 Concen: 50.000 ug/l  
 RT: 12.08 min Scan# 1792  
 Delta R.T. -0.00 min  
 Lab File: VX010111.D  
 Acq: 07 Jun 2019 16:17

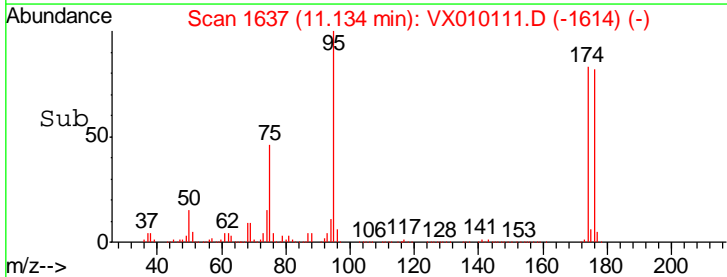
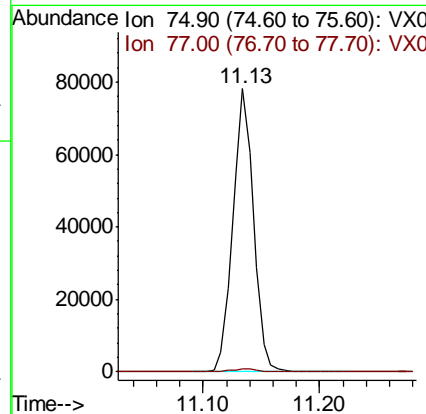
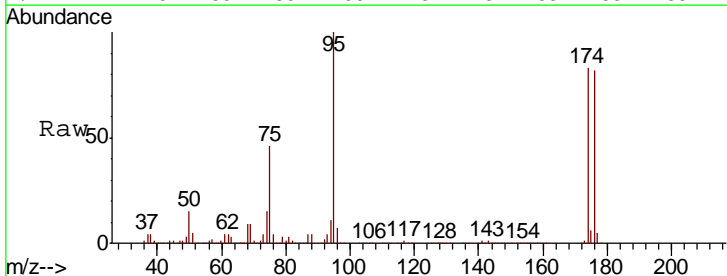
Instrument :  
 MSVOA\_X  
 ClientSampled :  
 VX0607MBL01

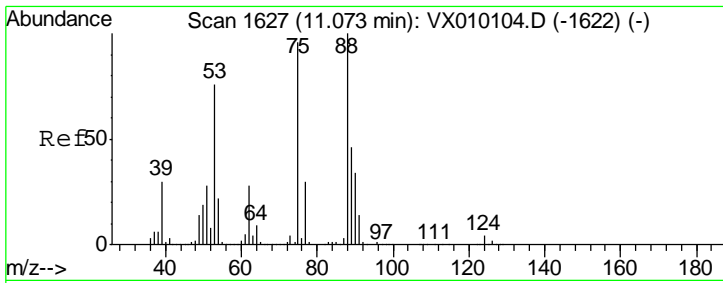
Tgt Ion	Resp	Lower	Upper
152	100		
115	55.3	41.4	124.2
150	156.8	0.0	345.2



#76  
 1,2,3-Trichloropropane  
 Concen: 23.065 ug/l  
 RT: 11.13 min Scan# 1637  
 Delta R.T. -0.16 min  
 Lab File: VX010111.D  
 Acq: 07 Jun 2019 16:17

Tgt Ion	Resp	Lower	Upper
75	100		
77	1.5	22.1	66.1#

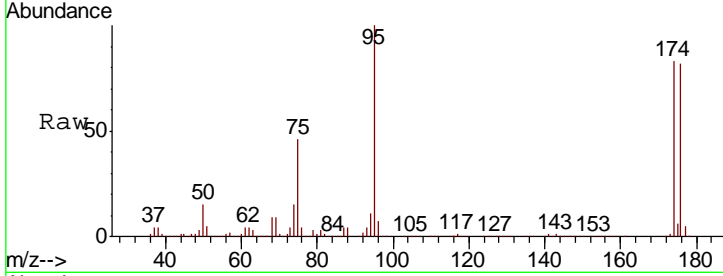




#81  
 trans-1,4-Dichloro-2-butene  
 Concen: 50.961 ug/l  
 RT: 11.13 min Scan# 1637  
 Delta R.T. 0.06 min  
 Lab File: VX010111.D  
 Acq: 07 Jun 2019 16:17

Instrument : MSVOA\_X  
 ClientSampled : VX0607MBL01

Tot Ion	Resp	Lower	Upper
75	100		
53	0.2	79.8	119.6#
89	0.0	34.2	51.4#



Abundance Ion 74.90 (74.60 to 75.60): VX0  
 Ion 53.00 (52.70 to 53.70): VX0  
 Ion 88.90 (88.60 to 89.60): VX0

