

Data Path : Z:\VOASRV\HPCHEM1\MSVOA X\DATA\VX060719\  
 Data File : VX010114.D  
 Acq On : 07 Jun 2019 17:27  
 Operator : JC/SP  
 Sample : K3173-02  
 Misc : 7.79µ/5mL/100uL/5.0mL/MSVOA\_X/MEOH  
 ALS Vial : 15 Sample Multiplier: 1

Instrument :  
 MSVOA\_X  
 ClientSampleId :  
 FK-SF-02-004-A

Quant Time: Jun 08 02:21:32 2019  
 Quant Method : Z:\VOASRV\HPCHEM1\MSVOA\_X\METHOD\82X060719W.M  
 Quant Title : SW846 8260  
 QLast Update : Sat Jun 08 02:12:13 2019  
 Response via : Initial Calibration

Internal Standards	R.T.	QIon	Response	Conc	Units	Dev(Min)
1) Pentafluorobenzene	5.66	168	271537	50.00	µg/l	0.00
34) 1,4-Difluorobenzene	6.85	114	416498	50.00	µg/l	0.00
63) Chlorobenzene-d5	10.11	117	372488	50.00	µg/l	0.00
72) 1,4-Dichlorobenzene-d4	12.08	152	192389	50.00	µg/l	0.00

## System Monitoring Compounds

33) 1,2-Dichloroethane-d4	6.06	65	129155	48.73	µg/l	0.00
Spiked Amount	50.000		Recovery	=	97.46%	
35) Dibromofluoromethane	5.50	113	128298	49.94	µg/l	0.00
Spiked Amount	50.000		Recovery	=	99.88%	
50) Toluene-d8	8.71	98	483713	50.24	µg/l	0.00
Spiked Amount	50.000		Recovery	=	100.48%	
62) 4-Bromofluorobenzene	11.14	95	180673	50.25	µg/l	0.00
Spiked Amount	50.000		Recovery	=	100.50%	

## Target Compounds

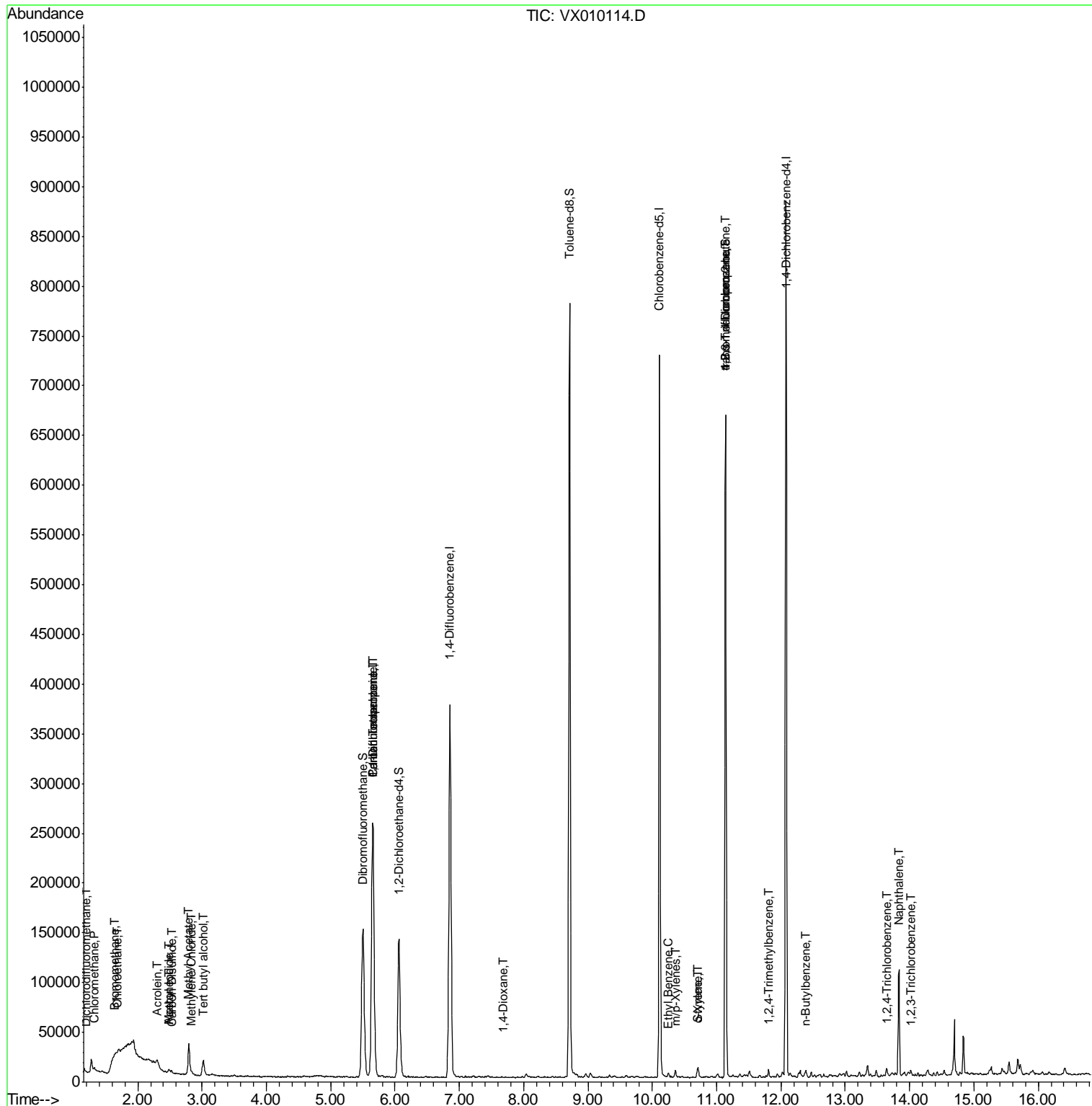
						Qvalue
2) Dichlorodifluoromethane	1.20	85	590	0.236	µg/l	88
3) Chloromethane	1.33	50	841	0.339	µg/l	96
5) Bromomethane	1.64	94	328	0.373	µg/l	87
6) Chloroethane	1.67	64	266	0.226	µg/l #	43
10) Methyl Iodide	2.48	142	1547	0.418	µg/l #	82
11) Tert butyl alcohol	3.01	59	9182	14.141	µg/l #	81
13) Acrolein	2.31	56	795	6.715	µg/l #	14
16) Acetone	2.49	43	2139	1.716	µg/l #	75
17) Carbon Disulfide	2.53	76	3133	0.445	µg/l #	85
18) Methyl Acetate	2.79	43	38175	13.924	µg/l #	82
20) Methylene Chloride	2.84	84	2108	0.770	µg/l #	73
36) 1,1-Dichloropropene	5.65	75	16534	4.866	µg/l #	54
38) Carbon Tetrachloride	5.65	117	23771	6.181	µg/l #	17
49) 1,4-Dioxane	7.69	88	42	0.533	µg/l #	28
67) Ethyl Benzene	10.26	91	2712	0.207	µg/l	97
68) m/p-Xylenes	10.36	106	1736	0.343	µg/l	80
69) o-Xylene	10.70	106	1510	0.300	µg/l	79
70) Styrene	10.72	104	3971	0.466	µg/l	95
76) 1,2,3-Trichloropropane	11.14	75	81764	21.248	µg/l #	35
81) trans-1,4-Dichloro-2-buten	11.14	75	81764	46.945	µg/l #	10
84) 1,2,4-Trimethylbenzene	11.81	105	3850	0.337	µg/l	97
89) n-Butylbenzene	12.38	91	2137	0.204	µg/l #	83
93) 1,2,4-Trichlorobenzene	13.65	180	1353	0.292	µg/l #	87
95) Naphthalene	13.83	128	71433	4.902	µg/l	98
96) 1,2,3-Trichlorobenzene	14.02	180	1253	0.274	µg/l #	88

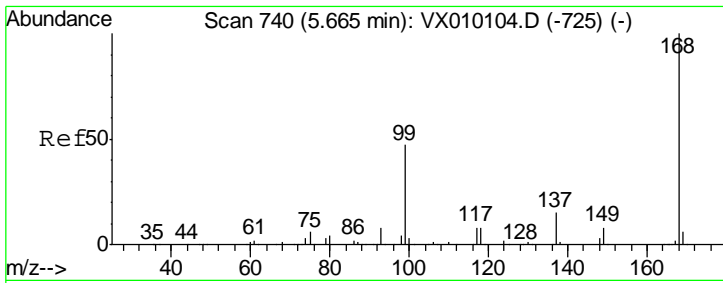
(#) = qualifier out of range (m) = manual integration (+) = signals summed

Data Path : Z:\VOASRV\HPCHEM1\MSVOA X\DATA\VX060719\  
 Data File : VX010114.D  
 Acq On : 07 Jun 2019 17:27  
 Operator : JC/SP  
 Sample : K3173-02  
 Misc : 7.79µ/5mL/100uL/5.0mL/MSVOA\_X/MEOH  
 ALS Vial : 15 Sample Multiplier: 1

Instrument :  
 MSVOA\_X  
 Client Sampled :  
 FK-SF-02-004-A

Quant Time: Jun 08 02:21:32 2019  
 Quant Method : Z:\VOASRV\HPCHEM1\MSVOA\_X\METHOD\82X060719W.M  
 Quant Title : SW846 8260  
 QLast Update : Sat Jun 08 02:12:13 2019  
 Response via : Initial Calibration

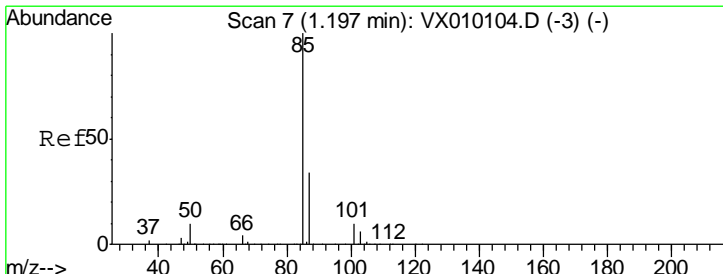
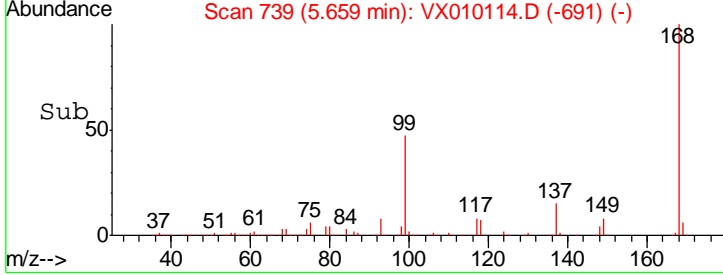
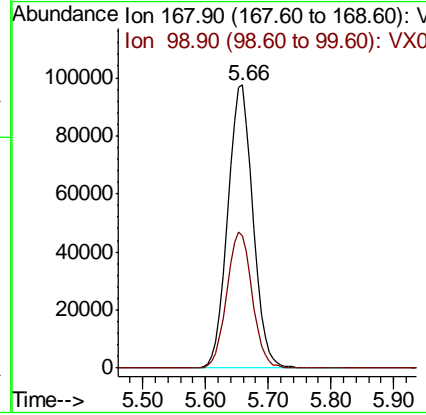
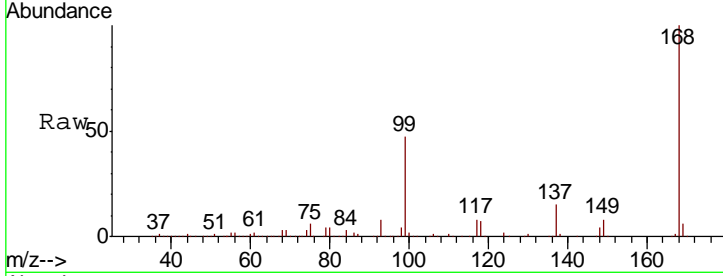




#1  
 Pentafluorobenzene  
 Concen: 50.000 ug/l  
 RT: 5.66 min Scan# 739  
 Delta R.T. -0.01 min  
 Lab File: VX010114.D  
 Acq: 07 Jun 2019 17:27

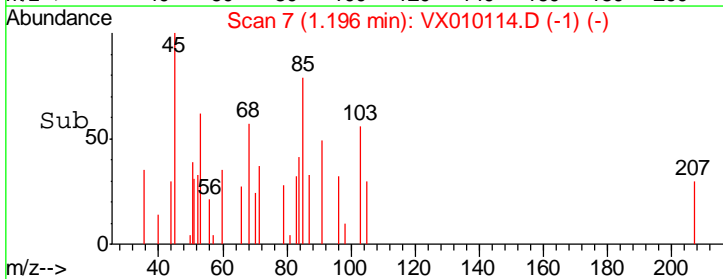
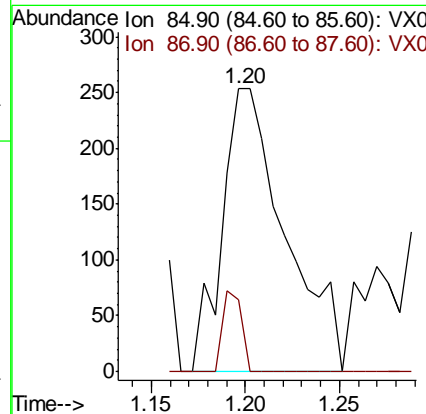
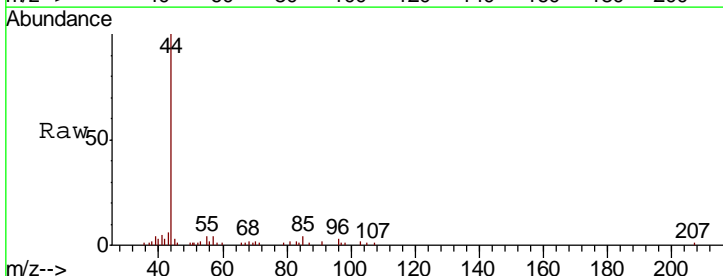
Instrument : MSVOA\_X  
 ClientSampled : FK-SF-02-004-A

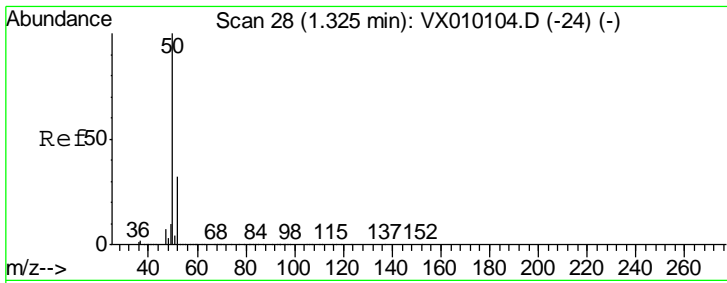
Tgt Ion	Resp	Lower	Upper
168	100		
99	46.5	43.0	64.6



#2  
 Dichlorodifluoromethane  
 Concen: 0.236 ug/l  
 RT: 1.20 min Scan# 7  
 Delta R.T. -0.00 min  
 Lab File: VX010114.D  
 Acq: 07 Jun 2019 17:27

Tgt Ion	Resp	Lower	Upper
85	100		
87	25.3	16.1	48.2

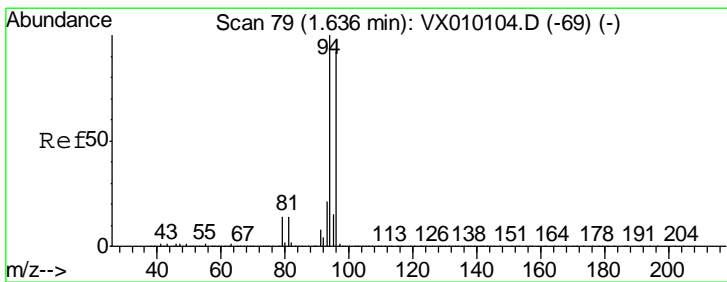
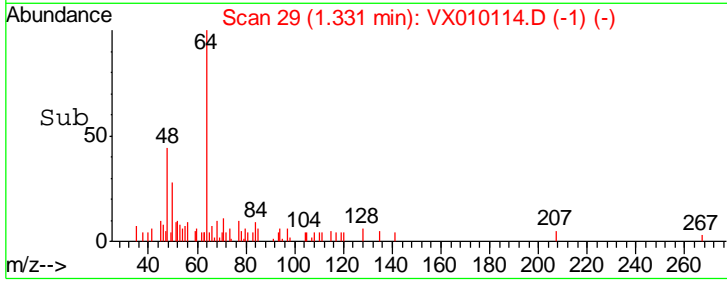
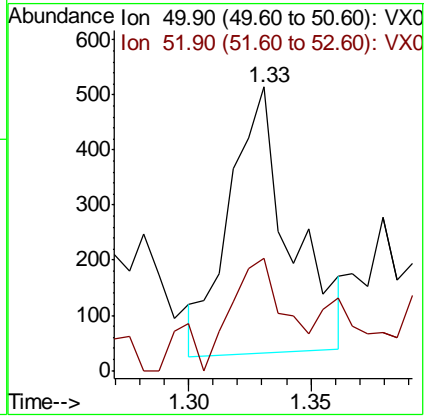
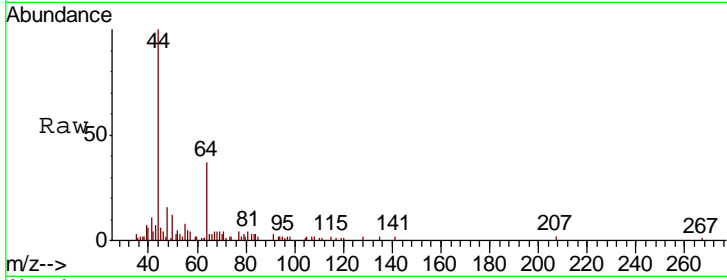




#3  
 Chloromethane  
 Concen: 0.339 ug/l  
 RT: 1.33 min Scan# 29  
 Delta R.T. 0.01 min  
 Lab File: VX010114.D  
 Acq: 07 Jun 2019 17:27

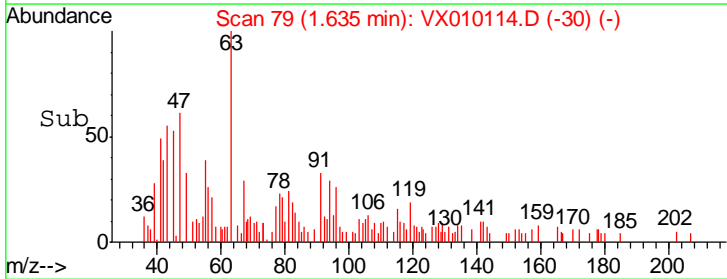
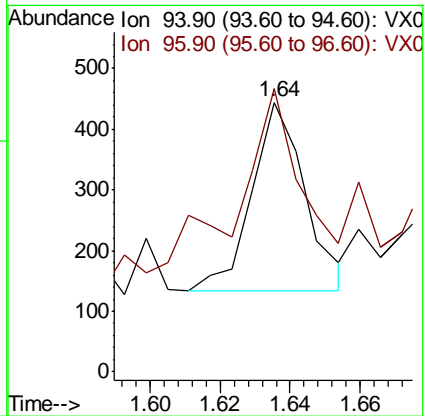
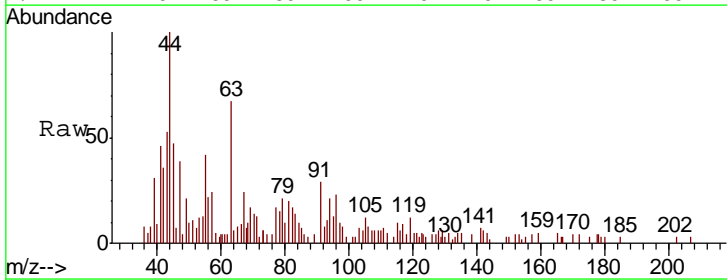
**Instrument :**  
 MSVOA\_X  
**ClientSampled :**  
 FK-SF-02-004-A

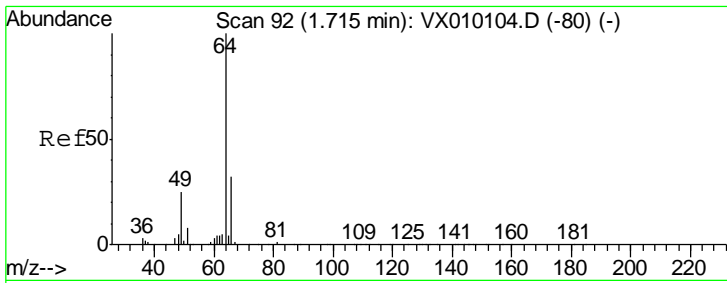
Tgt Ion	Resp	Lower	Upper
50	100		
52	30.4	26.0	39.0



#5  
 Bromomethane  
 Concen: 0.373 ug/l  
 RT: 1.64 min Scan# 79  
 Delta R.T. -0.00 min  
 Lab File: VX010114.D  
 Acq: 07 Jun 2019 17:27

Tgt Ion	Resp	Lower	Upper
94	100		
96	82.6	76.2	114.4

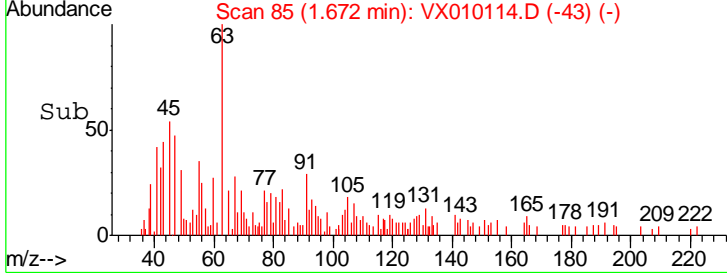
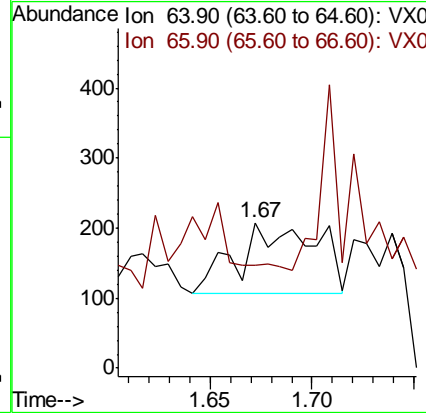
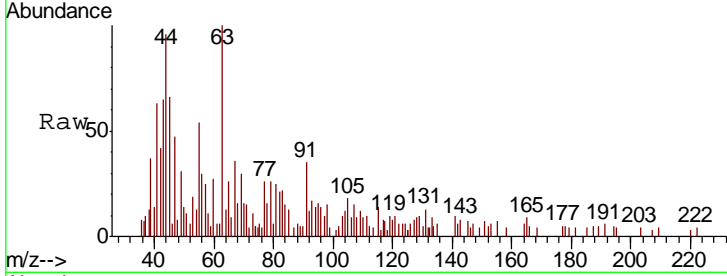




#6  
 Chloroethane  
 Concen: 0.226 ug/l  
 RT: 1.67 min Scan# 85  
 Delta R.T. -0.04 min  
 Lab File: VX010114.D  
 Acq: 07 Jun 2019 17:27

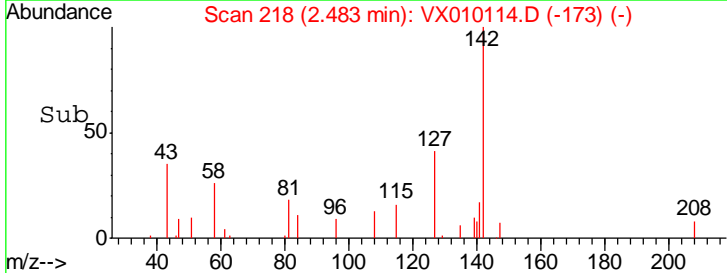
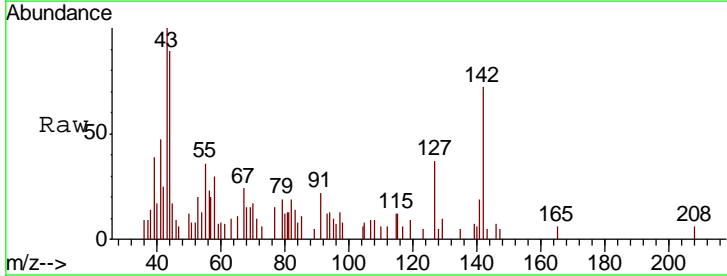
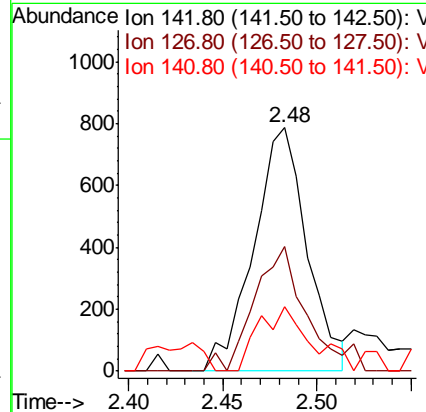
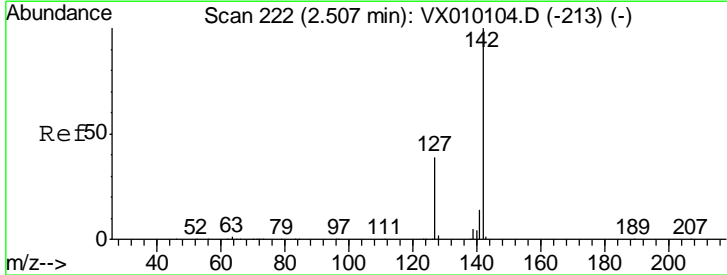
Instrument :  
 MSVOA\_X  
 ClientSampled :  
 FK-SF-02-004-A

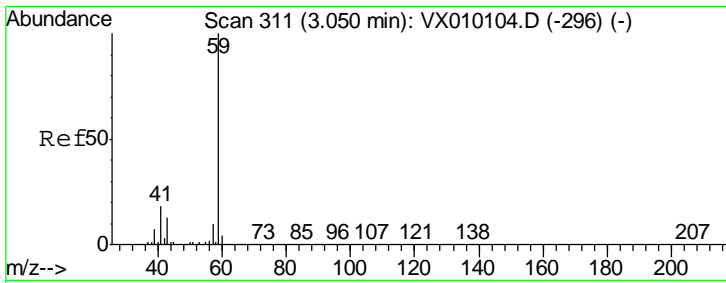
Tgt Ion	Resp	Lower	Upper
64	100		
66	0.0	25.1	37.7#



#10  
 Methyl Iodide  
 Concen: 0.418 ug/l  
 RT: 2.48 min Scan# 218  
 Delta R.T. -0.02 min  
 Lab File: VX010114.D  
 Acq: 07 Jun 2019 17:27

Tgt Ion	Resp	Lower	Upper
142	100		
127	50.3	33.0	49.4#
141	25.7	11.4	17.0#

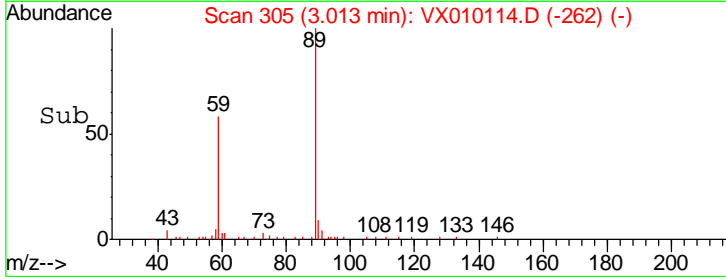
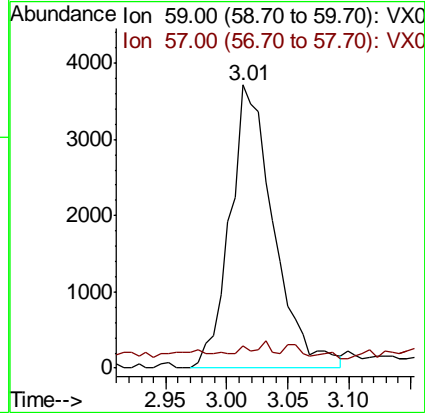
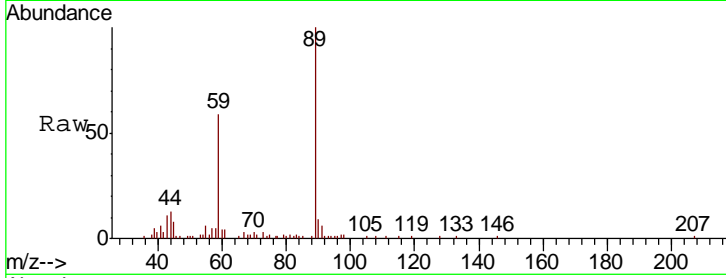




#11  
 Tert butyl alcohol  
 Concen: 14.141 ug/l  
 RT: 3.01 min Scan# 305  
 Delta R.T. -0.04 min  
 Lab File: VX010114.D  
 Acq: 07 Jun 2019 17:27

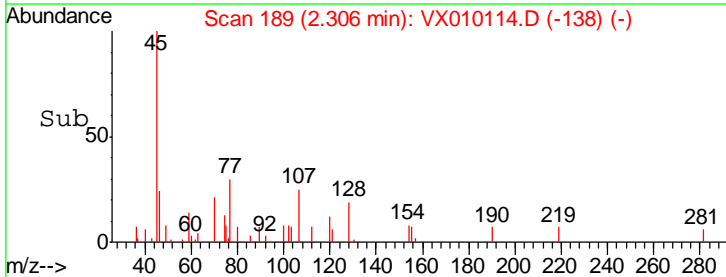
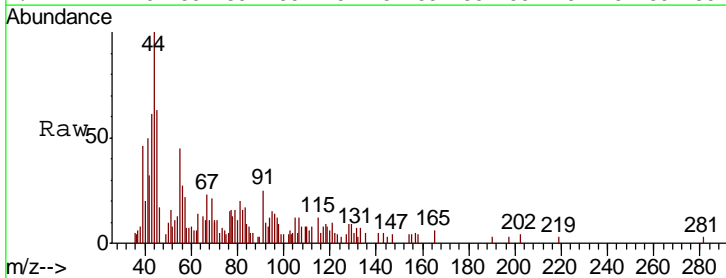
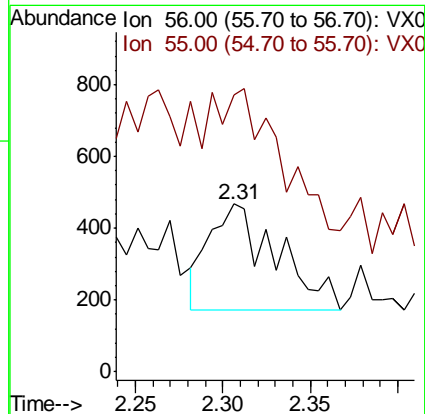
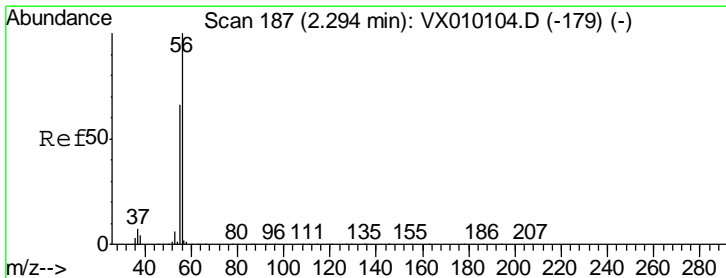
Instrument :  
 MSVOA\_X  
 ClientSampled :  
 FK-SF-02-004-A

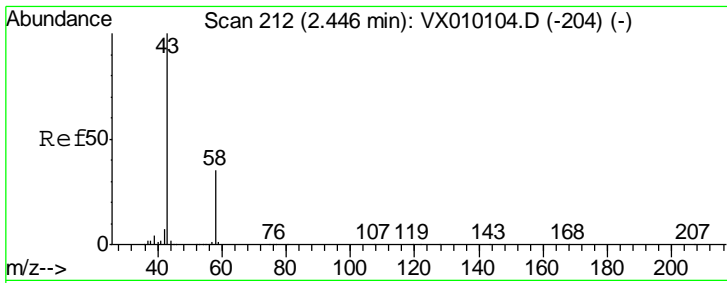
Tgt Ion: 59 Resp: 9182  
 Ion Ratio Lower Upper  
 59 100  
 57 3.0 8.2 12.2#



#13  
 Acrolein  
 Concen: 6.715 ug/l  
 RT: 2.31 min Scan# 189  
 Delta R.T. 0.01 min  
 Lab File: VX010114.D  
 Acq: 07 Jun 2019 17:27

Tgt Ion: 56 Resp: 795  
 Ion Ratio Lower Upper  
 56 100  
 55 0.0 57.0 85.4#

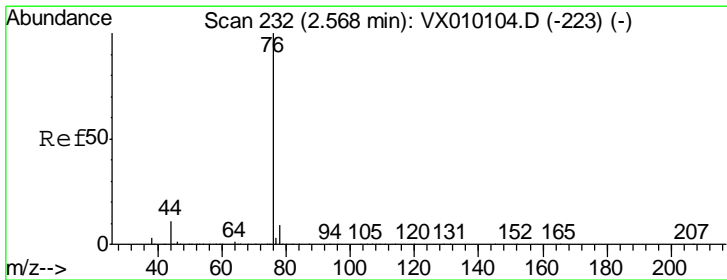
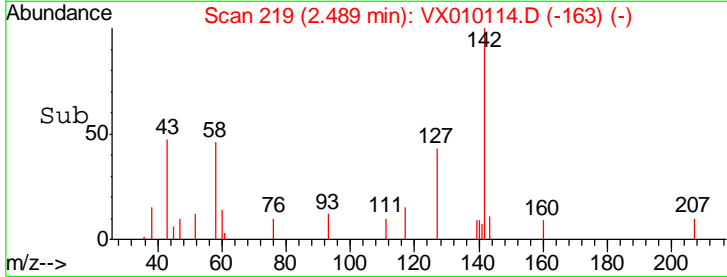
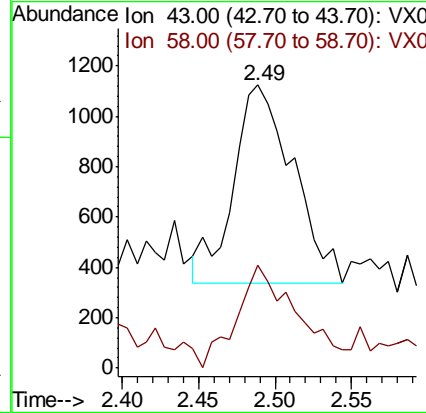
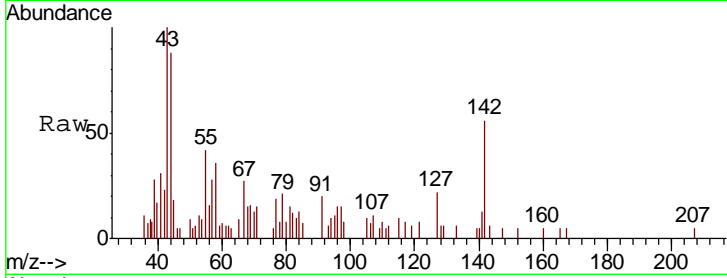




#16  
 Acetone  
 Concen: 1.716 ug/l  
 RT: 2.49 min Scan# 219  
 Delta R.T. 0.04 min  
 Lab File: VX010114.D  
 Acq: 07 Jun 2019 17:27

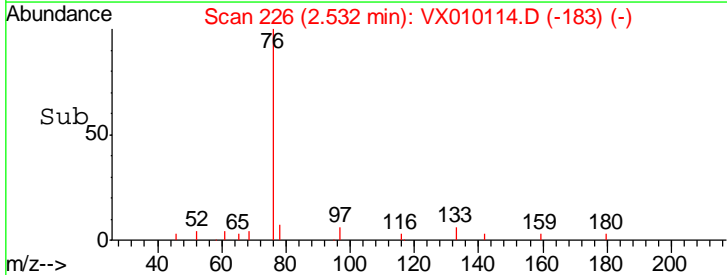
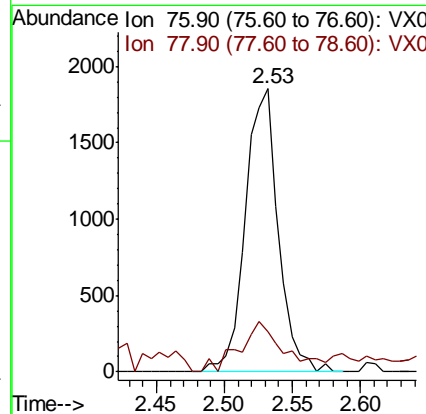
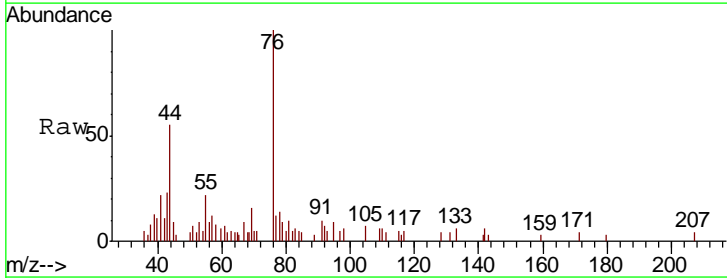
Instrument :  
 MSVOA\_X  
 ClientSampled :  
 FK-SF-02-004-A

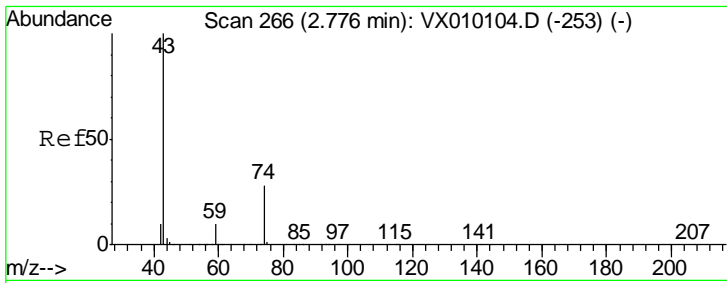
Tgt Ion: 43 Resp: 2139  
 Ion Ratio Lower Upper  
 43 100  
 58 42.4 23.2 34.8#



#17  
 Carbon Disulfide  
 Concen: 0.445 ug/l  
 RT: 2.53 min Scan# 226  
 Delta R.T. -0.04 min  
 Lab File: VX010114.D  
 Acq: 07 Jun 2019 17:27

Tgt Ion: 76 Resp: 3133  
 Ion Ratio Lower Upper  
 76 100  
 78 14.1 7.0 10.6#

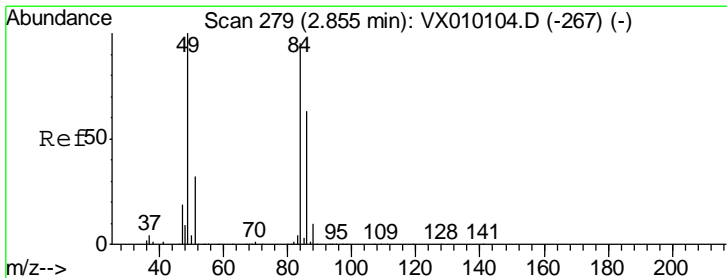
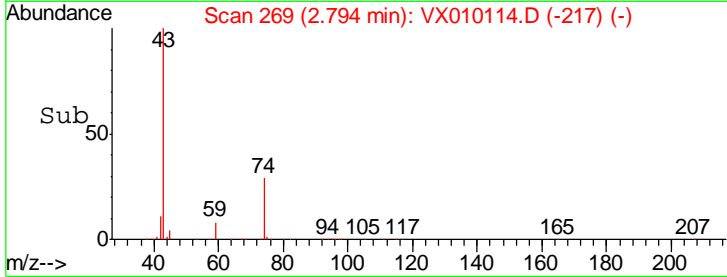
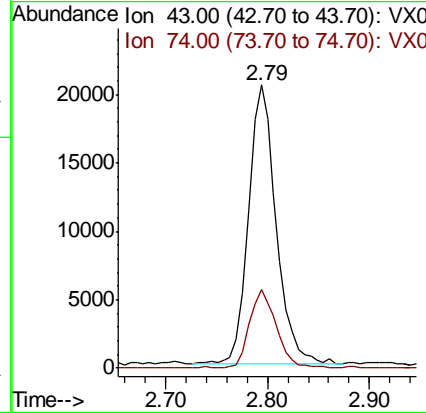
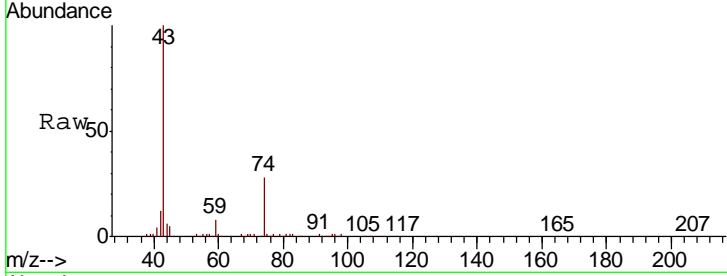




#18  
 Methyl Acetate  
 Concen: 13.924 ug/l  
 RT: 2.79 min Scan# 269  
 Delta R.T. 0.02 min  
 Lab File: VX010114.D  
 Acq: 07 Jun 2019 17:27

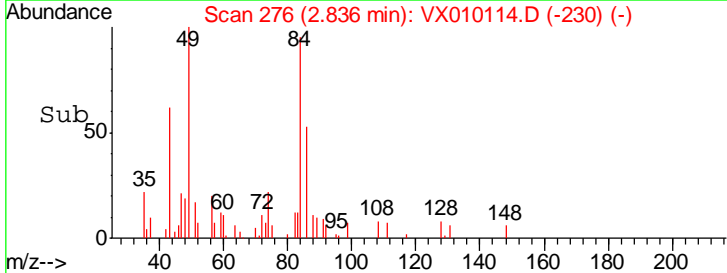
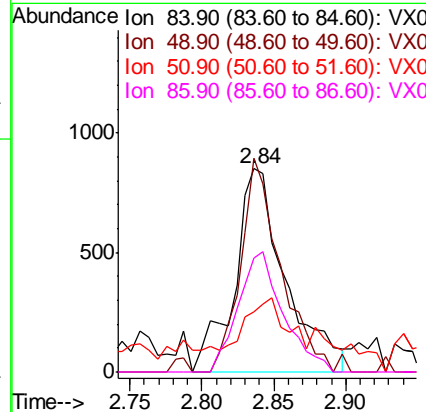
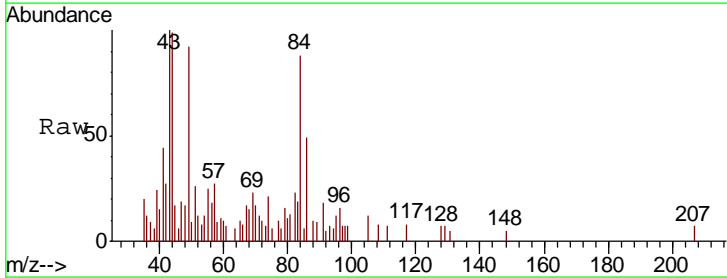
Instrument :  
 MSVOA\_X  
 ClientSampled :  
 FK-SF-02-004-A

Tgt Ion: 43 Resp: 38175  
 Ion Ratio Lower Upper  
 43 100  
 74 27.7 15.8 23.6#

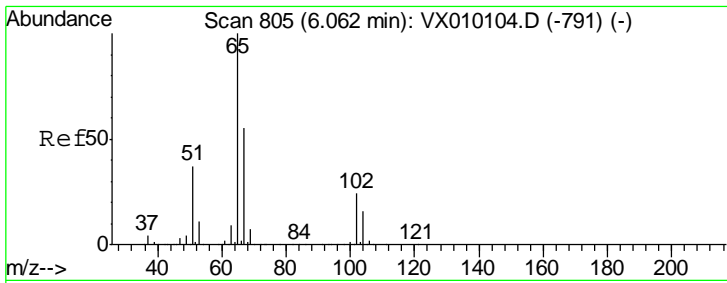


#20  
 Methylene Chloride  
 Concen: 0.770 ug/l  
 RT: 2.84 min Scan# 276  
 Delta R.T. -0.02 min  
 Lab File: VX010114.D  
 Acq: 07 Jun 2019 17:27

Tgt Ion: 84 Resp: 2108  
 Ion Ratio Lower Upper  
 84 100  
 49 105.3 115.8 173.6#  
 51 19.1 34.4 51.6#  
 86 56.3 49.7 74.5



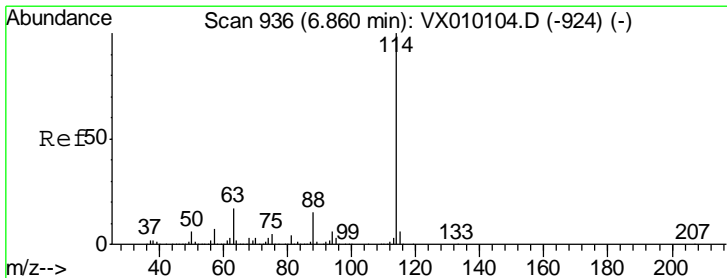
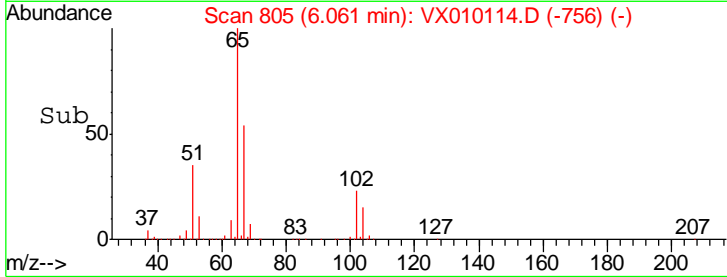
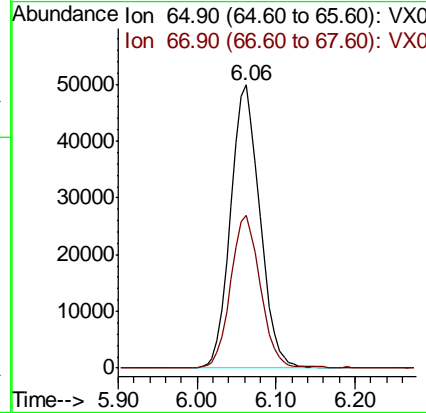
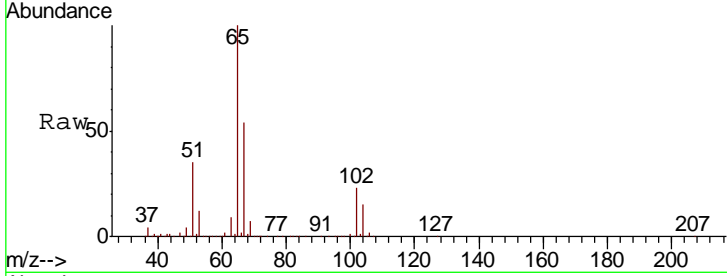




#33  
 1,2-Dichloroethane-d4  
 Concen: 48.728 ug/l  
 RT: 6.06 min Scan# 805  
 Delta R.T. 0.00 min  
 Lab File: VX010114.D  
 Acq: 07 Jun 2019 17:27

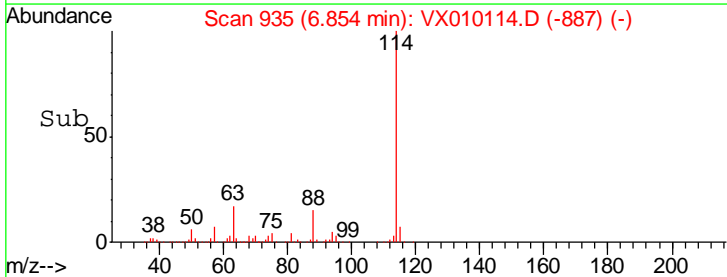
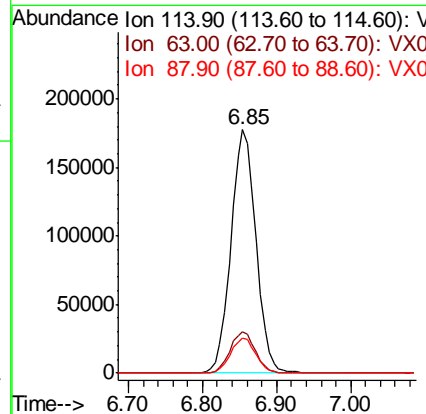
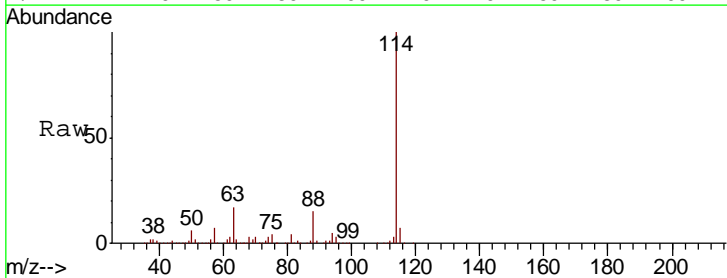
Instrument :  
 MSVOA\_X  
 ClientSampled :  
 FK-SF-02-004-A

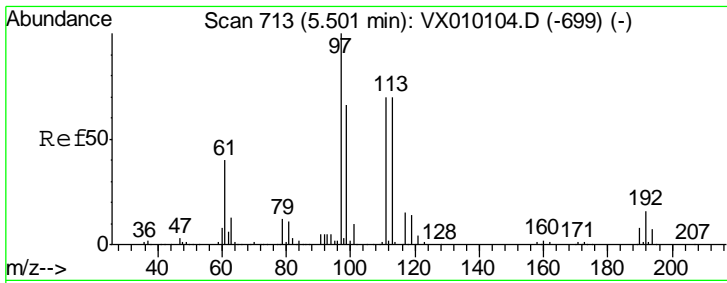
Tgt Ion	Resp	Lower	Upper
65	129155		
67	53.8	0.0	108.4



#34  
 1,4-Difluorobenzene  
 Concen: 50.000 ug/l  
 RT: 6.85 min Scan# 935  
 Delta R.T. -0.01 min  
 Lab File: VX010114.D  
 Acq: 07 Jun 2019 17:27

Tgt Ion	Resp	Lower	Upper
114	416498		
63	17.0	0.0	47.4
88	14.6	0.0	33.0

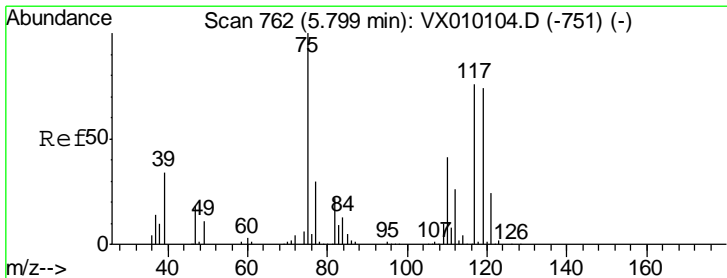
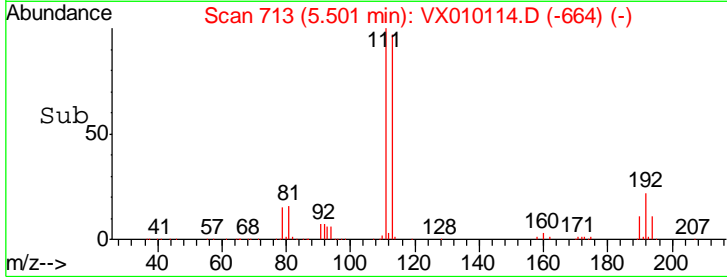
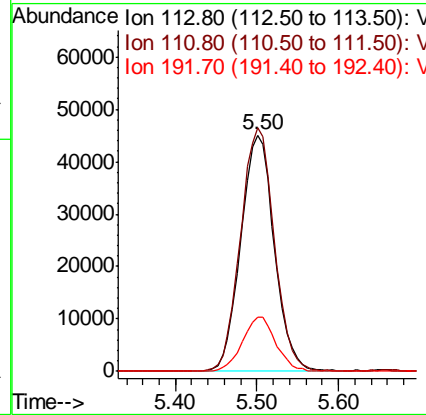
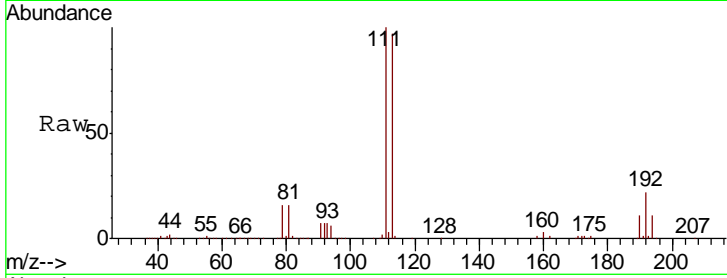




#35  
 Dibromofluoromethane  
 Concen: 49.940 ug/l  
 RT: 5.50 min Scan# 713  
 Delta R.T. -0.00 min  
 Lab File: VX010114.D  
 Acq: 07 Jun 2019 17:27

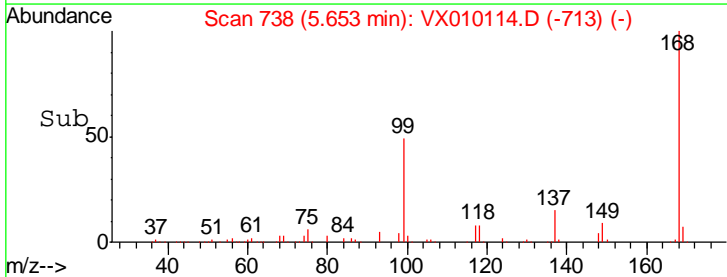
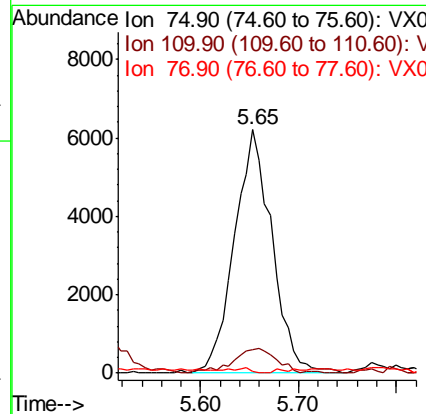
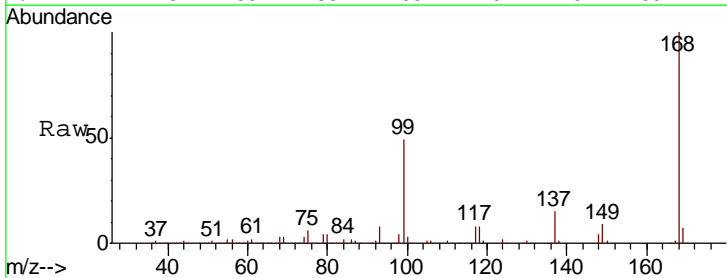
Instrument :  
 MSVOA\_X  
 ClientSampled :  
 FK-SF-02-004-A

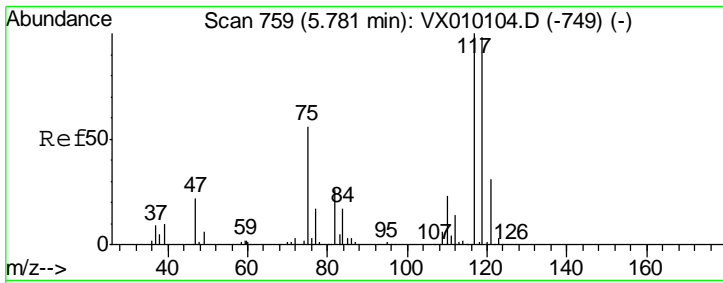
Tgt Ion	Resp	Lower	Upper
113	128298		
111	104.1	82.2	123.2
192	23.0	17.1	25.7



#36  
 1,1-Dichloropropene  
 Concen: 4.866 ug/l  
 RT: 5.65 min Scan# 738  
 Delta R.T. -0.15 min  
 Lab File: VX010114.D  
 Acq: 07 Jun 2019 17:27

Tgt Ion	Resp	Lower	Upper
75	16534		
110	11.9	16.7	50.1#
77	1.2	25.0	37.4#

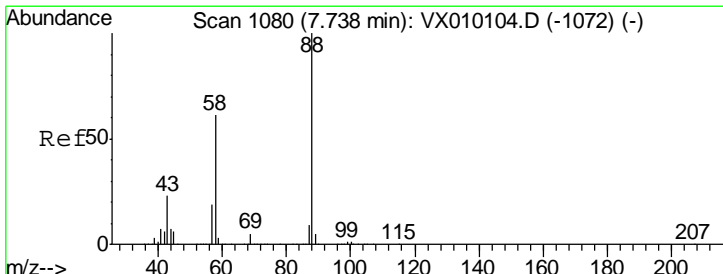
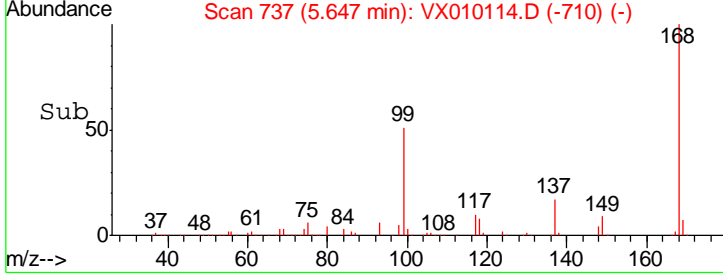
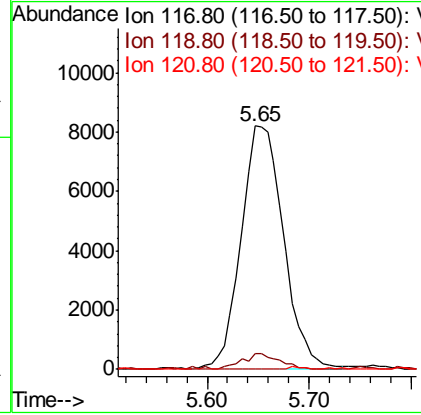
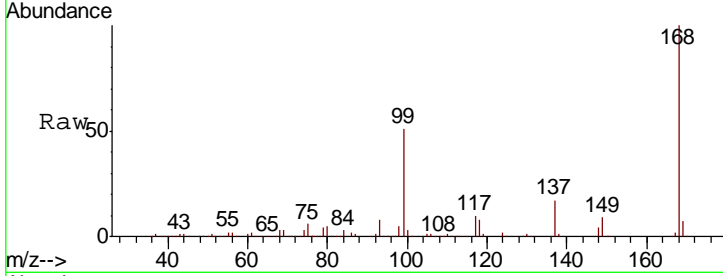




#38  
 Carbon Tetrachloride  
 Concen: 6.181 ug/l  
 RT: 5.65 min Scan# 737  
 Delta R.T. -0.13 min  
 Lab File: VX010114.D  
 Acq: 07 Jun 2019 17:27

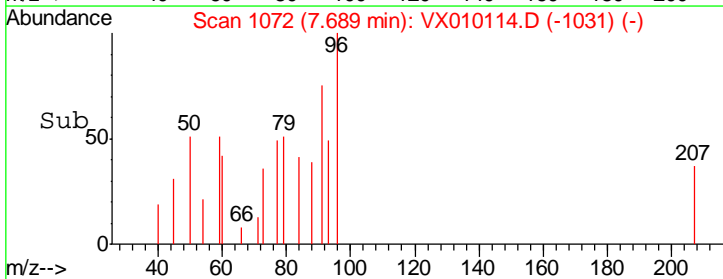
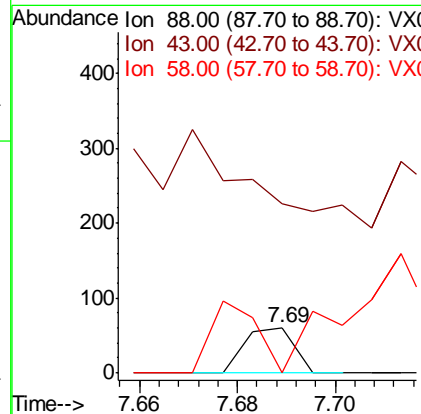
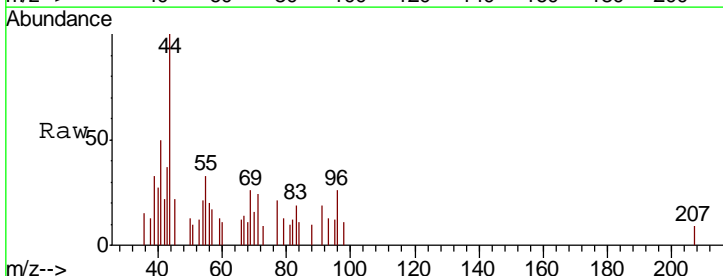
**Instrument :**  
 MSVOA\_X  
**ClientSampled :**  
 FK-SF-02-004-A

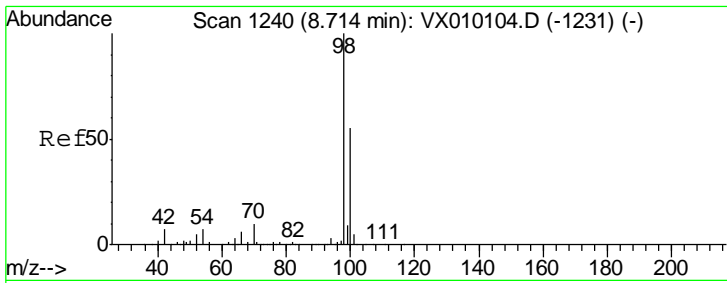
Tgt Ion	Resp	Lower	Upper
117	23771		
119	6.5	77.3	115.9#
121	0.0	25.4	38.0#



#49  
 1,4-Dioxane  
 Concen: 0.533 ug/l  
 RT: 7.69 min Scan# 1072  
 Delta R.T. -0.05 min  
 Lab File: VX010114.D  
 Acq: 07 Jun 2019 17:27

Tgt Ion	Resp	Lower	Upper
88	42		
43	0.0	30.2	45.4#
58	147.6	64.0	96.0#

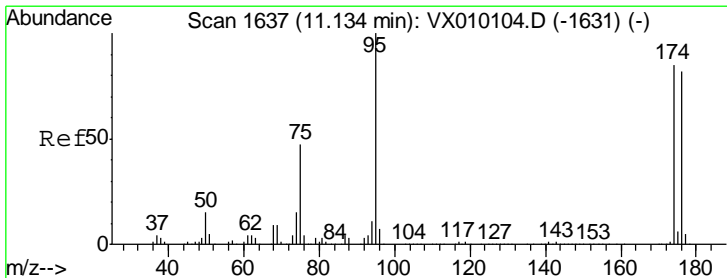
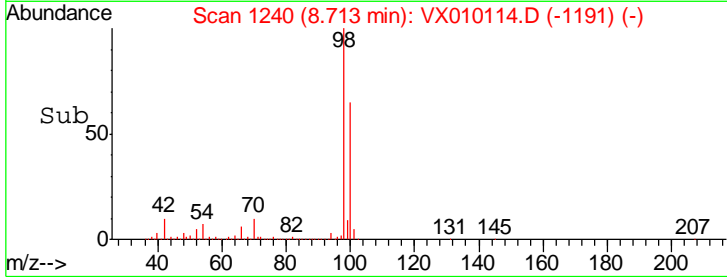
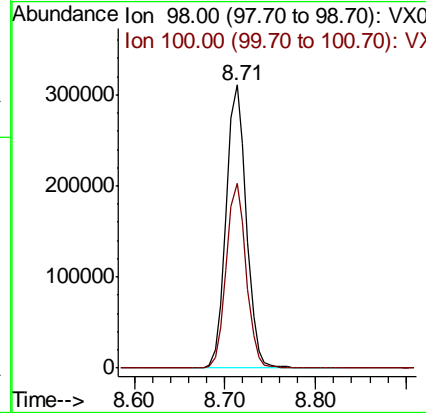
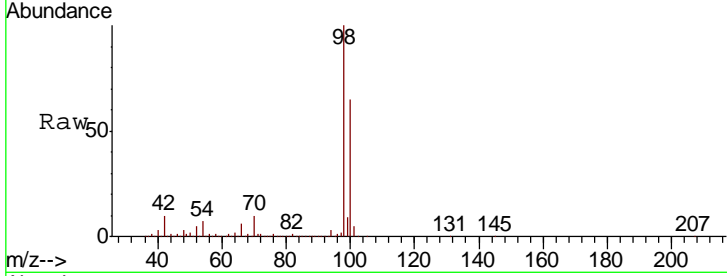




#50  
 Toluene-d8  
 Concen: 50.238 ug/l  
 RT: 8.71 min Scan# 1240  
 Delta R.T. 0.00 min  
 Lab File: VX010114.D  
 Acq: 07 Jun 2019 17:27

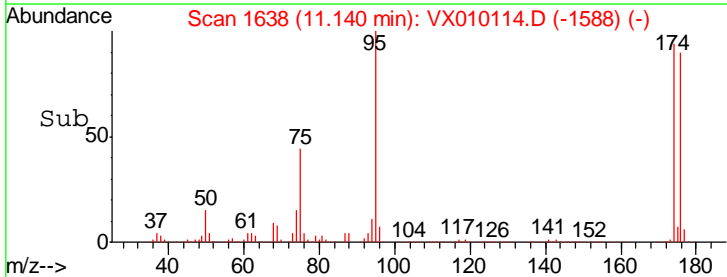
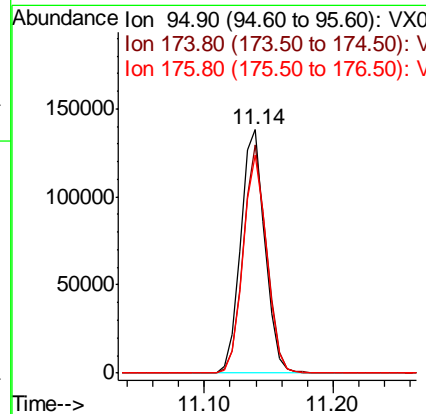
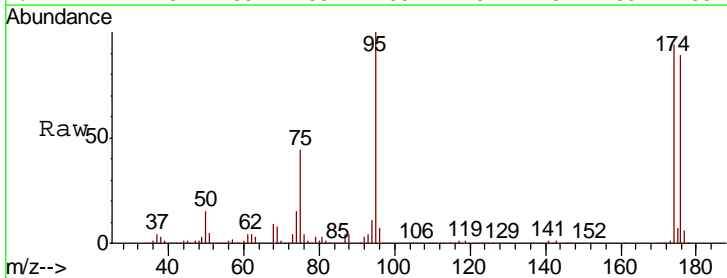
Instrument :  
 MSVOA\_X  
 ClientSampled :  
 FK-SF-02-004-A

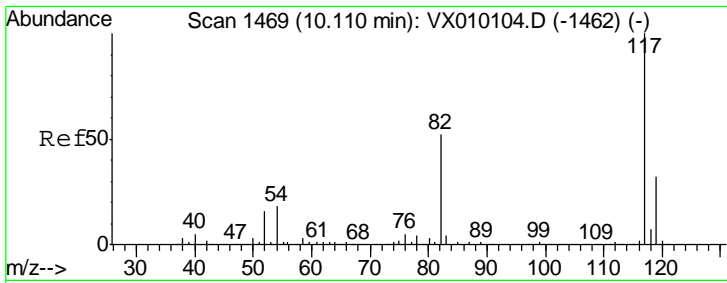
Tgt Ion: 98 Resp: 483713  
 Ion Ratio Lower Upper  
 98 100  
 100 64.5 51.5 77.3



#62  
 4-Bromofluorobenzene  
 Concen: 50.245 ug/l  
 RT: 11.14 min Scan# 1638  
 Delta R.T. 0.01 min  
 Lab File: VX010114.D  
 Acq: 07 Jun 2019 17:27

Tgt Ion: 95 Resp: 180673  
 Ion Ratio Lower Upper  
 95 100  
 174 89.6 0.0 160.4  
 176 87.4 0.0 154.6

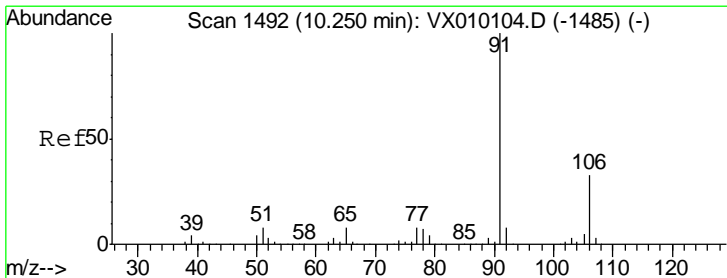
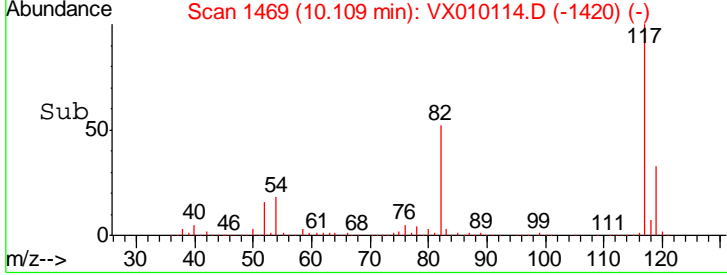
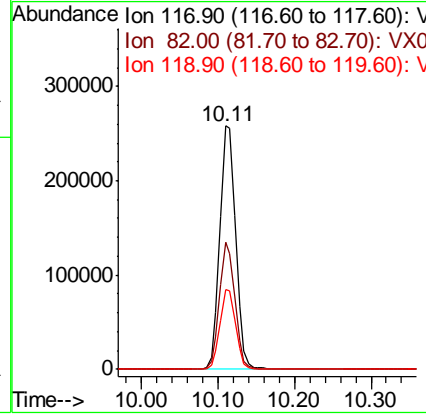
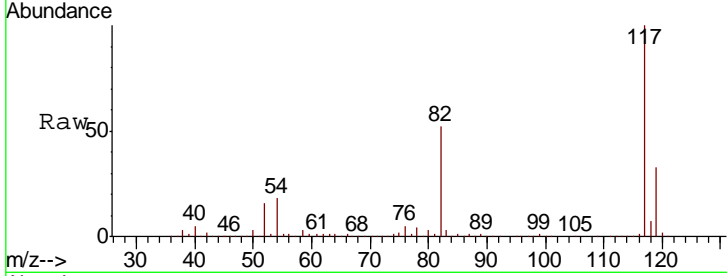




#63  
 Chlorobenzene-d5  
 Concen: 50.000 ug/l  
 RT: 10.11 min Scan# 1469  
 Delta R.T. -0.00 min  
 Lab File: VX010114.D  
 Acq: 07 Jun 2019 17:27

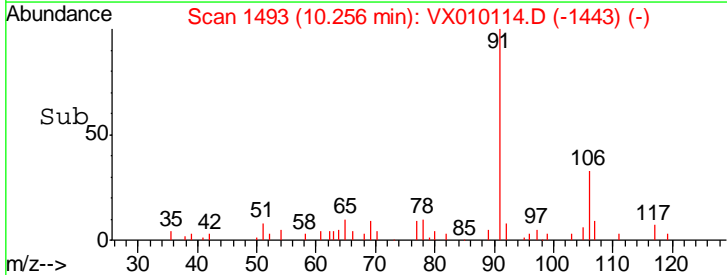
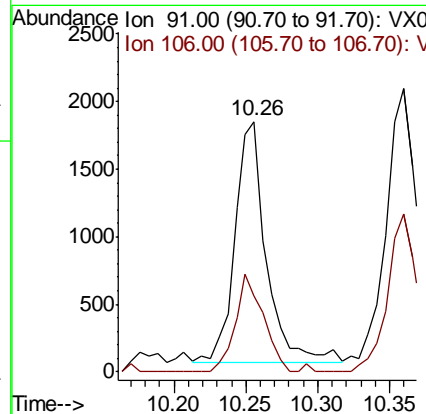
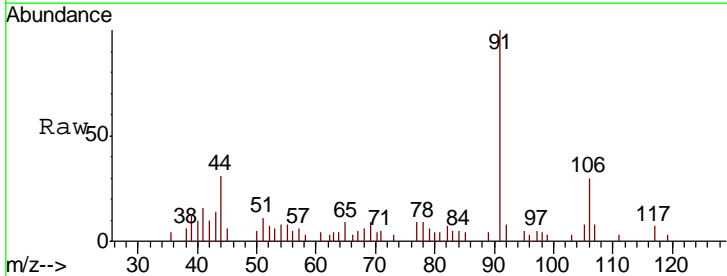
Instrument : MSVOA\_X  
 ClientSampled : FK-SF-02-004-A

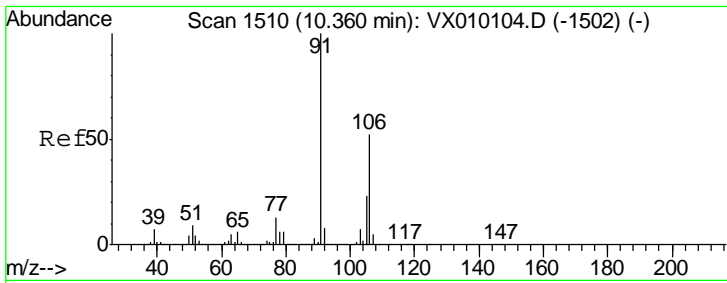
Tgt Ion	Resp	Lower	Upper
117	372488		
82	52.2	49.2	73.8
119	32.7	25.2	37.8



#67  
 Ethyl Benzene  
 Concen: 0.207 ug/l  
 RT: 10.26 min Scan# 1493  
 Delta R.T. 0.01 min  
 Lab File: VX010114.D  
 Acq: 07 Jun 2019 17:27

Tgt Ion	Resp	Lower	Upper
91	2712		
106	31.6	23.9	35.9

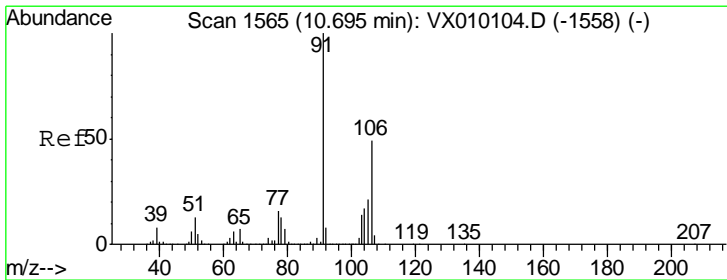
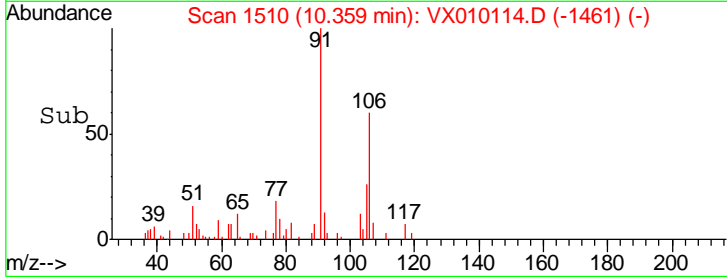
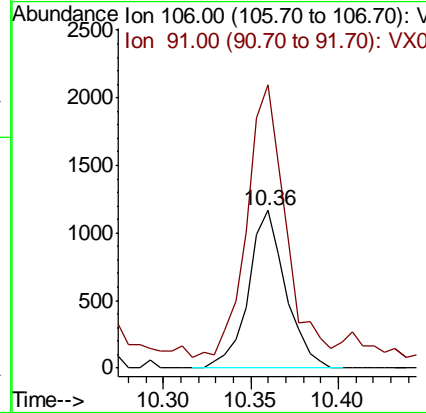
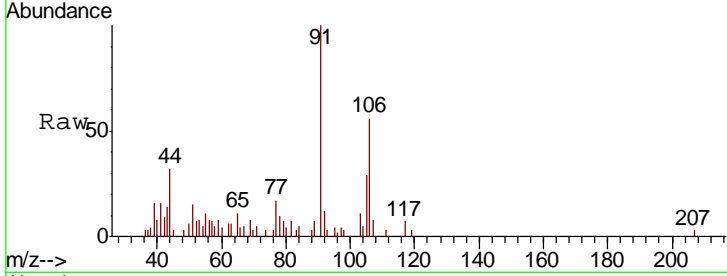




#68  
 m/p-Xylenes  
 Concen: 0.343 ug/l  
 RT: 10.36 min Scan# 1510  
 Delta R.T. -0.00 min  
 Lab File: VX010114.D  
 Acq: 07 Jun 2019 17:27

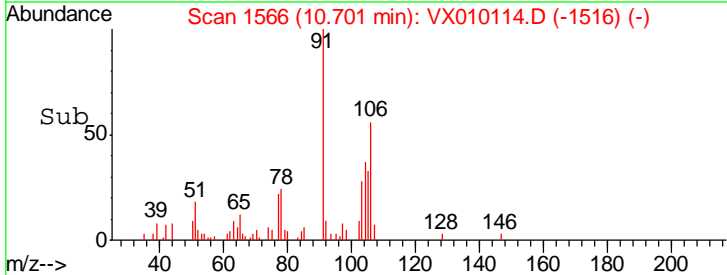
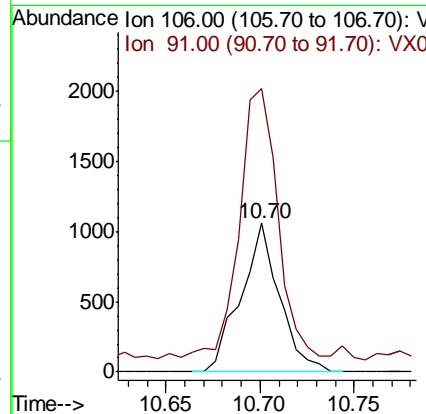
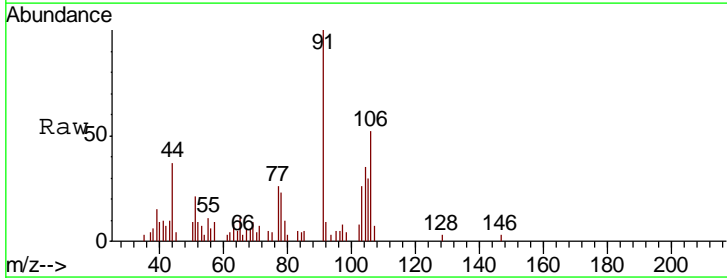
Instrument :  
 MSVOA\_X  
 ClientSampled :  
 FK-SF-02-004-A

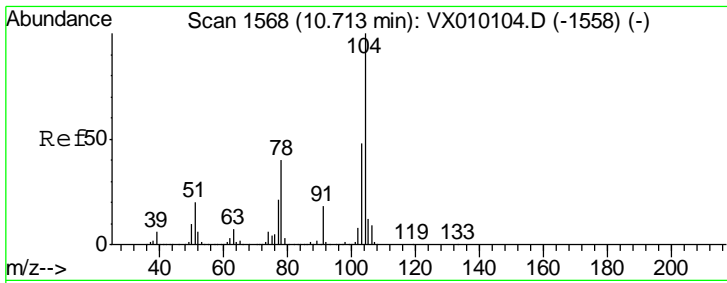
Tgt Ion:106 Resp: 1736  
 Ion Ratio Lower Upper  
 106 100  
 91 178.6 167.3 250.9



#69  
 o-Xylene  
 Concen: 0.300 ug/l  
 RT: 10.70 min Scan# 1566  
 Delta R.T. 0.01 min  
 Lab File: VX010114.D  
 Acq: 07 Jun 2019 17:27

Tgt Ion:106 Resp: 1510  
 Ion Ratio Lower Upper  
 106 100  
 91 186.6 110.4 331.2

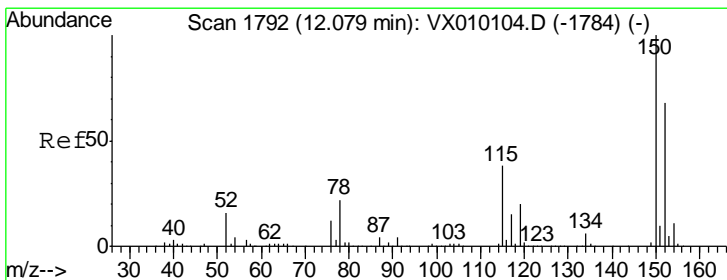
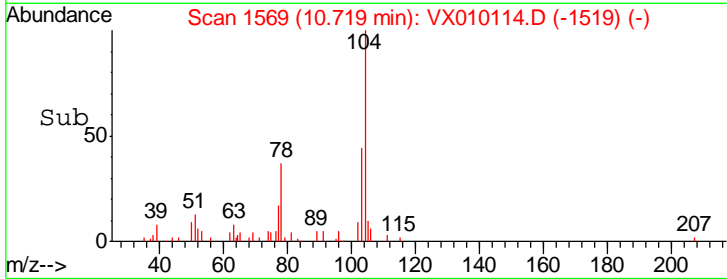
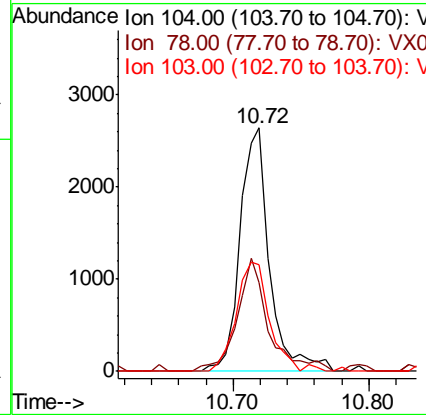
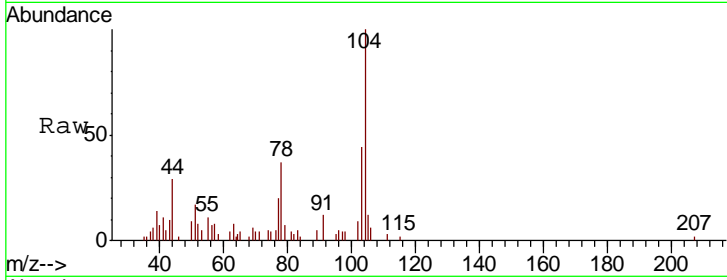




#70  
 Styrene  
 Concen: 0.466 ug/l  
 RT: 10.72 min Scan# 1569  
 Delta R.T. 0.01 min  
 Lab File: VX010114.D  
 Acq: 07 Jun 2019 17:27

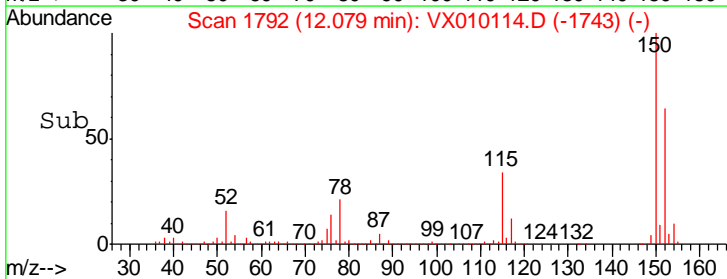
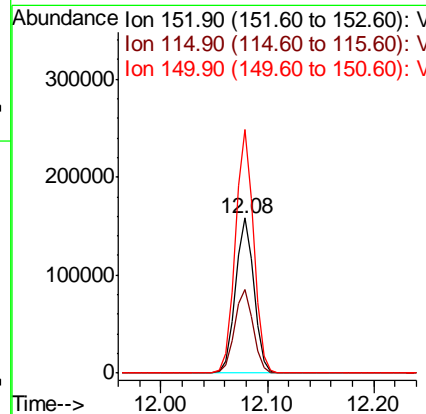
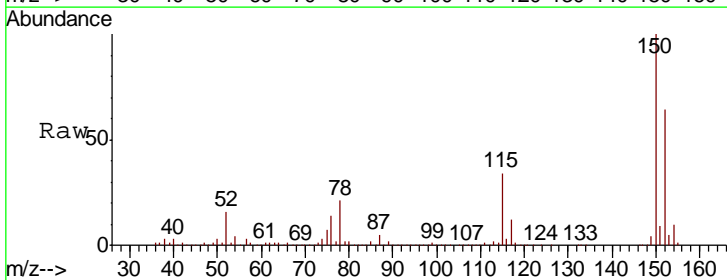
Instrument :  
 MSVOA\_X  
 ClientSampled :  
 FK-SF-02-004-A

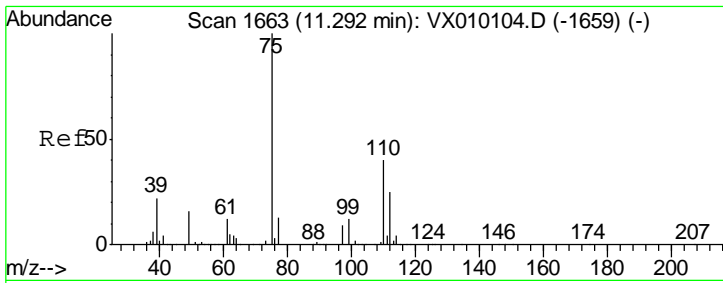
Tgt Ion	Resp	Lower	Upper
104	3971		
78	49.3	42.1	63.1
103	50.9	44.1	66.1



#72  
 1,4-Dichlorobenzene-d4  
 Concen: 50.000 ug/l  
 RT: 12.08 min Scan# 1792  
 Delta R.T. -0.00 min  
 Lab File: VX010114.D  
 Acq: 07 Jun 2019 17:27

Tgt Ion	Resp	Lower	Upper
152	192389		
115	54.8	41.4	124.2
150	155.4	0.0	345.2

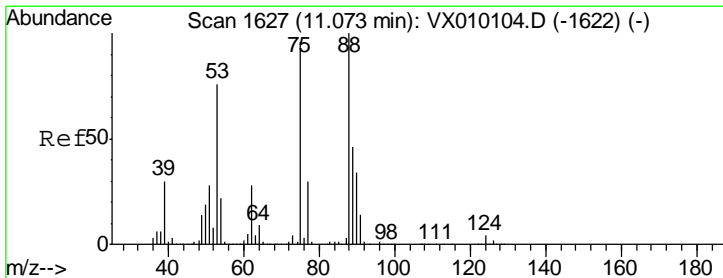
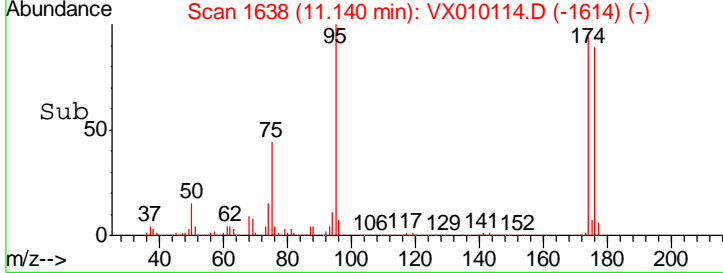
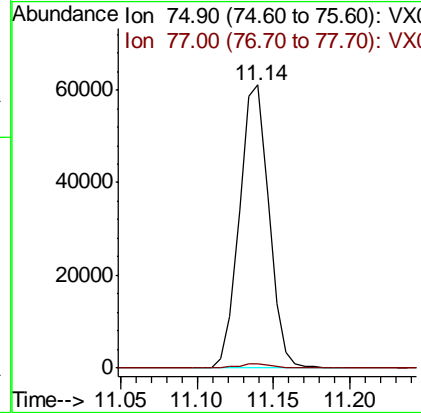
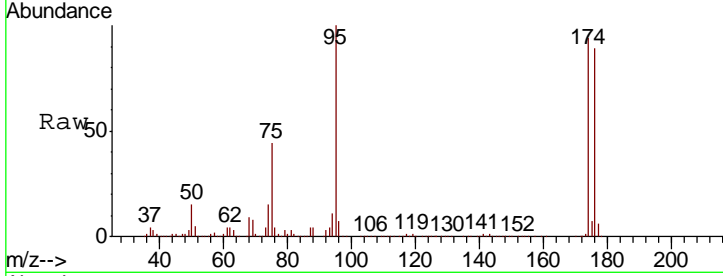




#76  
 1,2,3-Trichloropropane  
 Concen: 21.248 ug/l  
 RT: 11.14 min Scan# 1638  
 Delta R.T. -0.15 min  
 Lab File: VX010114.D  
 Acq: 07 Jun 2019 17:27

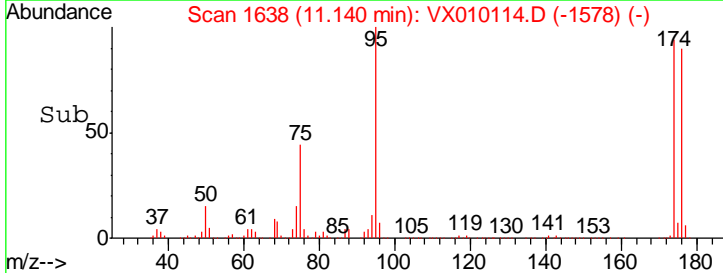
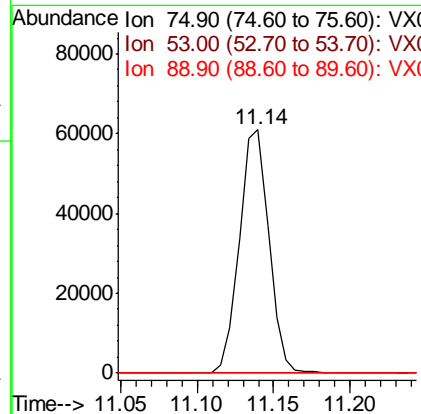
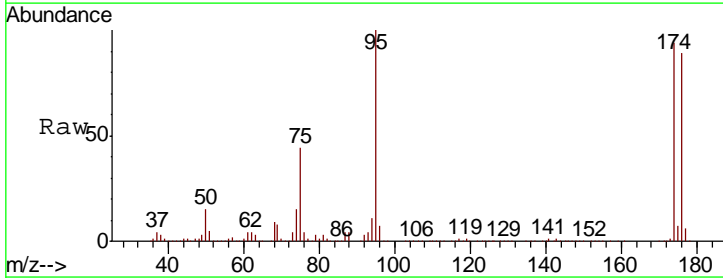
Instrument : MSVOA\_X  
 ClientSampled : FK-SF-02-004-A

Tgt Ion: 75 Resp: 81764  
 Ion Ratio Lower Upper  
 75 100  
 77 2.0 22.1 66.1#

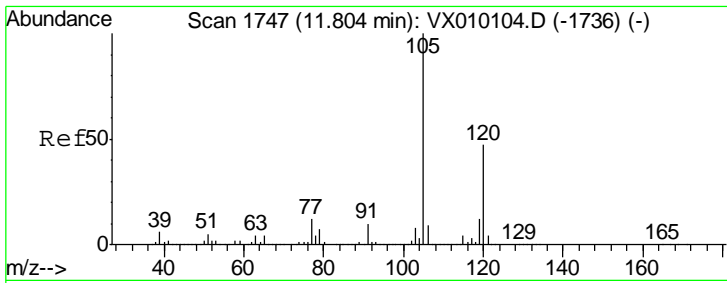


#81  
 trans-1,4-Dichloro-2-butene  
 Concen: 46.945 ug/l  
 RT: 11.14 min Scan# 1638  
 Delta R.T. 0.07 min  
 Lab File: VX010114.D  
 Acq: 07 Jun 2019 17:27

Tgt Ion: 75 Resp: 81764  
 Ion Ratio Lower Upper  
 75 100  
 53 0.1 79.8 119.6#  
 89 0.1 34.2 51.4#



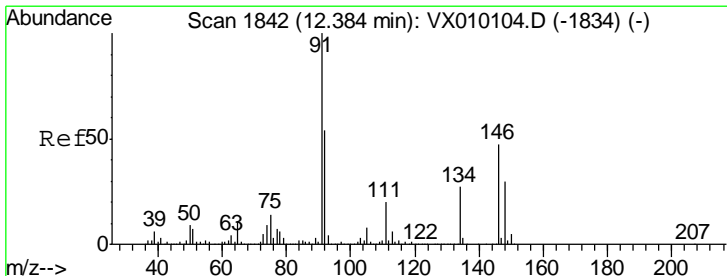
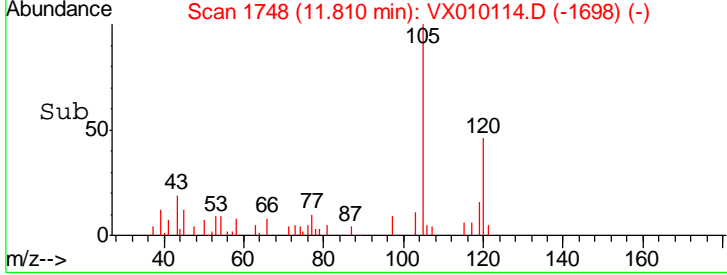
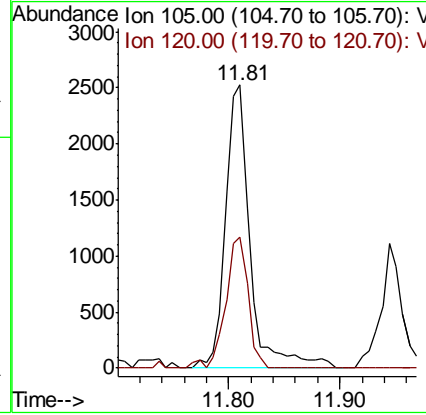
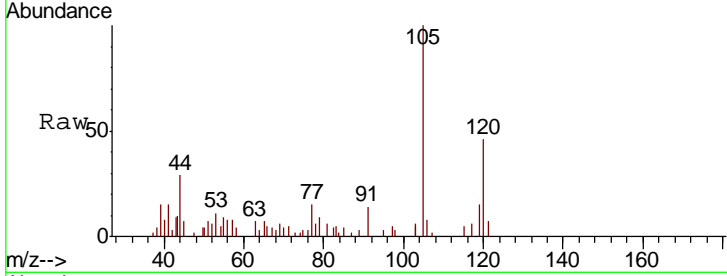




#84  
 1,2,4-Trimethylbenzene  
 Concen: 0.337 ug/l  
 RT: 11.81 min Scan# 1748  
 Delta R.T. 0.01 min  
 Lab File: VX010114.D  
 Acq: 07 Jun 2019 17:27

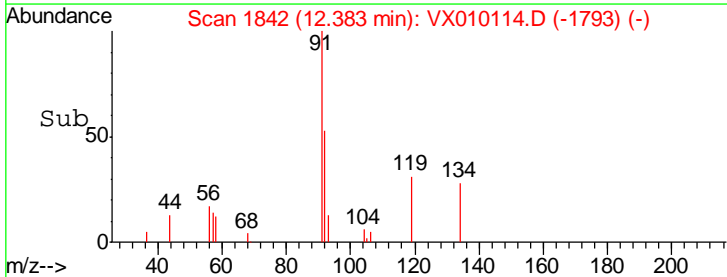
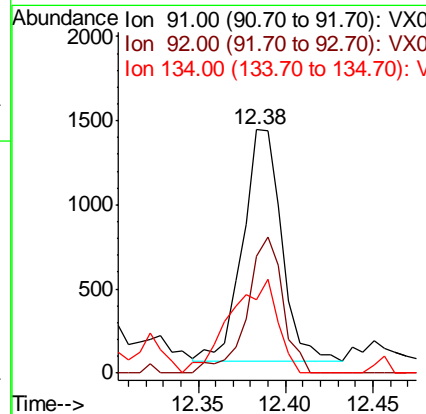
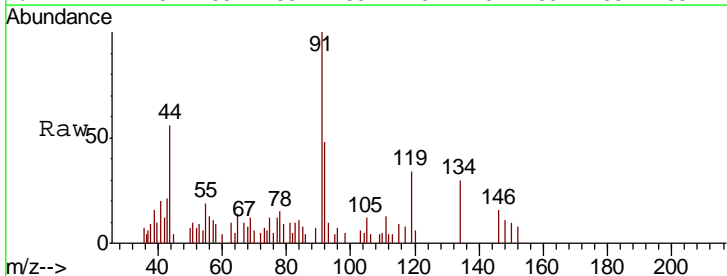
Instrument : MSVOA\_X  
 ClientSampled : FK-SF-02-004-A

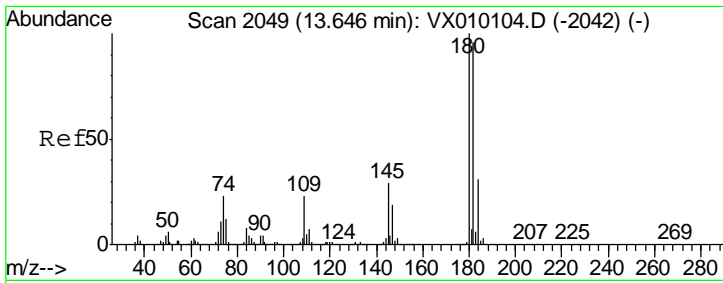
Tgt Ion	Resp	Lower	Upper
105	100		
120	42.2	22.1	66.1



#89  
 n-Butylbenzene  
 Concen: 0.204 ug/l  
 RT: 12.38 min Scan# 1842  
 Delta R.T. -0.00 min  
 Lab File: VX010114.D  
 Acq: 07 Jun 2019 17:27

Tgt Ion	Resp	Lower	Upper
91	100		
92	53.8	26.3	78.8
134	49.4	12.3	36.8#

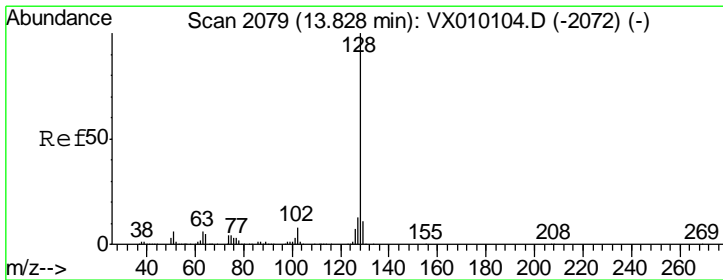
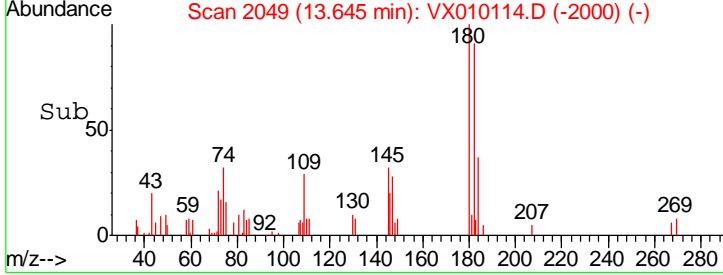
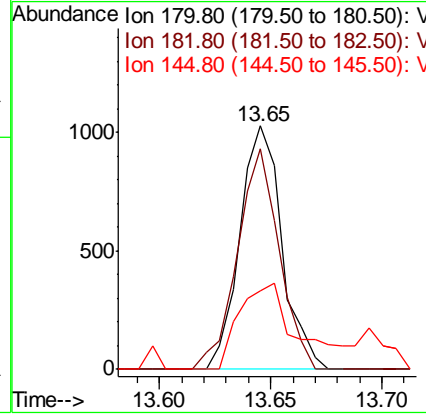
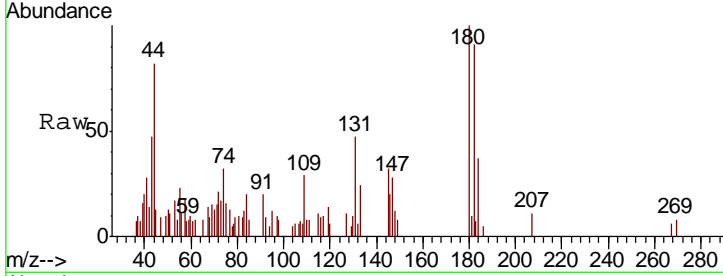




#93  
 1,2,4-Trichlorobenzene  
 Concen: 0.292 ug/l  
 RT: 13.65 min Scan# 2049  
 Delta R.T. -0.00 min  
 Lab File: VX010114.D  
 Acq: 07 Jun 2019 17:27

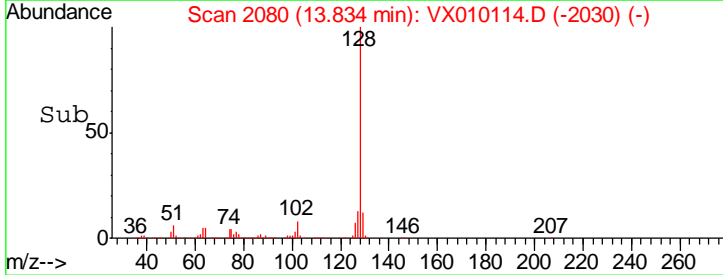
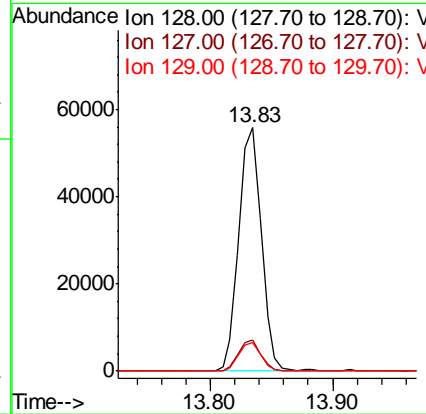
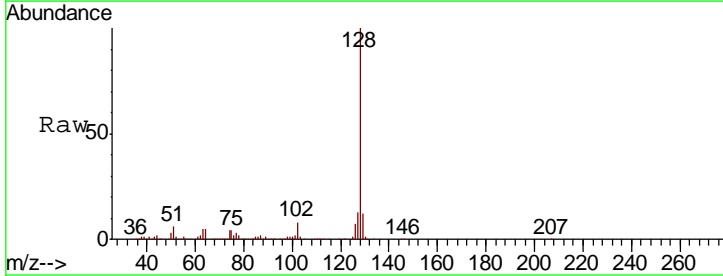
Instrument :  
 MSVOA\_X  
 ClientSampled :  
 FK-SF-02-004-A

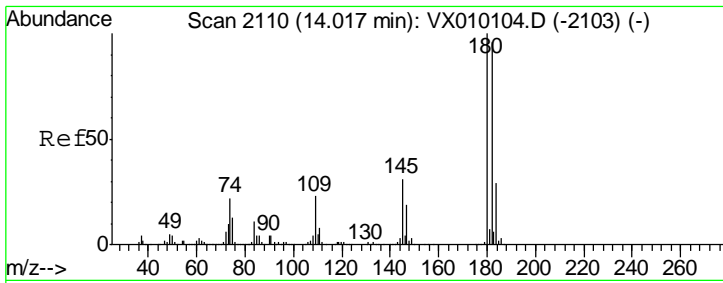
Tgt Ion	Resp	Lower	Upper
180	1353		
182	89.7	47.4	142.2
145	48.6	14.5	43.5#



#95  
 Naphthalene  
 Concen: 4.902 ug/l  
 RT: 13.83 min Scan# 2080  
 Delta R.T. 0.01 min  
 Lab File: VX010114.D  
 Acq: 07 Jun 2019 17:27

Tgt Ion	Resp	Lower	Upper
128	71433		
127	12.5	10.6	16.0
129	11.6	8.8	13.2





#96  
 1,2,3-Trichlorobenzene  
 Concen: 0.274 ug/l  
 RT: 14.02 min Scan# 2110  
 Delta R.T. -0.00 min  
 Lab File: VX010114.D  
 Acq: 07 Jun 2019 17:27

Instrument : MSVOA\_X  
 ClientSampled : FK-SF-02-004-A

Tot Ion	180	Resp	1253
Ion Ratio	Lower	Upper	
180	100		
182	91.9	47.3	142.0
145	52.8	15.6	46.7#

