

Data Path : Z:\voasrv\HPCHEM1\MSVOA_X\Data\VX060722\
 Data File : VX029285.D
 Acq On : 07 Jun 2022 18:32
 Operator : JC/MD
 Sample : VSTDIC001
 Misc : 5.0mL/MSVOA_X/WATER
 ALS Vial : 11 Sample Multiplier: 1

Instrument :
 MSVOA_X
 ClientSampleId :
 VSTDIC001

Manual Integrations
 APPROVED

Reviewed By : John Carlone 06/08/2022
 Supervised By : Mahesh Dadoda 06/08/2022

Quant Time: Jun 08 02:41:22 2022
 Quant Method : Z:\voasrv\HPCHEM1\MSVOA_X\Method\82X060722W.M
 Quant Title : SW846 8260
 QLast Update : Wed Jun 08 02:41:19 2022
 Response via : Initial Calibration

Compound	R.T.	QIon	Response	Conc	Units	Dev(Min)
Internal Standards						
1) Pentafluorobenzene	5.556	168	187601	50.000	ug/l	# 0.00
34) 1,4-Difluorobenzene	6.763	114	305686	50.000	ug/l	0.00
63) Chlorobenzene-d5	10.055	117	315366	50.000	ug/l	0.00
72) 1,4-Dichlorobenzene-d4	12.024	152	175239	50.000	ug/l	0.00
System Monitoring Compounds						
33) 1,2-Dichloroethane-d4	0.000	65	0d	0.000	ug/l	
Spiked Amount	50.000	Range 61 - 141	Recovery	=	0.000%#	
35) Dibromofluoromethane	0.000	113	0d	0.000	ug/l	
Spiked Amount	50.000	Range 69 - 133	Recovery	=	0.000%#	
50) Toluene-d8	0.000	98	0d	0.000	ug/l	
Spiked Amount	50.000	Range 65 - 126	Recovery	=	0.000%#	
62) 4-Bromofluorobenzene	0.000	95	0d	0.000	ug/l	
Spiked Amount	50.000	Range 58 - 135	Recovery	=	0.000%#	
Target Compounds						
						Qvalue
2) Dichlorodifluoromethane	1.166	85	2892	0.968	ug/l	99
3) Chloromethane	1.294	50	3732	1.170	ug/l	# 85
4) Vinyl Chloride	1.374	62	3268	0.970	ug/l	92
6) Chloroethane	1.685	64	2545	1.364	ug/l	100
7) Trichlorofluoromethane	1.886	101	4814	0.993	ug/l	92
8) Diethyl Ether	2.136	74	1890	1.019	ug/l	73
9) 1,1,2-Trichlorotrifluo...	2.325	101	2873	0.978	ug/l	97
12) 1,1-Dichloroethene	2.319	96	2723	0.952	ug/l	82
14) Allyl chloride	2.666	41	4364	0.956	ug/l	# 88
15) Acrylonitrile	3.068	53	8608	4.787	ug/l	98
16) Acetone	2.386	43	8483	5.544	ug/l	97
17) Carbon Disulfide	2.514	76	7027	1.018	ug/l	# 94
18) Methyl Acetate	2.703	43	4234	1.051	ug/l	95
19) Methyl tert-butyl Ether	3.117	73	8777	0.893	ug/l	97
20) Methylene Chloride	2.788	84	3778	1.095	ug/l	94
21) trans-1,2-Dichloroethene	3.093	96	3162	1.003	ug/l	87
22) Diisopropyl ether	3.763	45	8463	0.918	ug/l	# 71
23) Vinyl Acetate	3.727	43	31745	4.145	ug/l	97
24) 1,1-Dichloroethane	3.611	63	5219	0.934	ug/l	# 91
25) 2-Butanone	4.580	43	11747	4.841	ug/l	96
26) 2,2-Dichloropropane	4.477	77	3725	0.936	ug/l	99
27) cis-1,2-Dichloroethene	4.495	96	3767	1.002	ug/l	97
28) Bromochloromethane	4.897	49	2232	1.018	ug/l	# 92
29) Tetrahydrofuran	5.019	42	7472	4.680	ug/l	93
30) Chloroform	5.093	83	5865	0.984	ug/l	91
32) 1,1,1-Trichloroethane	5.385	97	4774	0.931	ug/l	# 49
36) 1,1-Dichloropropene	5.696	75	4238	0.987	ug/l	94
37) Ethyl Acetate	4.739	43	4483	1.030	ug/l	# 90
38) Carbon Tetrachloride	5.672	117	4214	0.948	ug/l	87
39) Methylcyclohexane	7.385	83	5003	0.940	ug/l	# 85
40) Benzene	6.044	78	12449	0.967	ug/l	# 87
41) Methacrylonitrile	4.928	41	1046	0.477	ug/l	# 44
42) 1,2-Dichloroethane	6.092	62	4174	0.924	ug/l	100
43) Isopropyl Acetate	6.354	43	5968	0.895	ug/l	97
44) Trichloroethene	7.123	130	3513	0.999	ug/l	81
45) 1,2-Dichloropropane	7.434	63	2990	0.942	ug/l	99

Data Path : Z:\voasrv\HPCHEM1\MSVOA_X\Data\VX060722\
 Data File : VX029285.D
 Acq On : 07 Jun 2022 18:32
 Operator : JC/MD
 Sample : VSTDIC001
 Misc : 5.0mL/MSVOA_X/WATER
 ALS Vial : 11 Sample Multiplier: 1

Instrument :
 MSVOA_X
 ClientSampleId :
 VSTDIC001

Manual Integrations
 APPROVED

Reviewed By : John Carlone 06/08/2022
 Supervised By : Mahesh Dadoda 06/08/2022

Quant Time: Jun 08 02:41:22 2022
 Quant Method : Z:\voasrv\HPCHEM1\MSVOA_X\Method\82X060722W.M
 Quant Title : SW846 8260
 QLast Update : Wed Jun 08 02:41:19 2022
 Response via : Initial Calibration

Compound	R.T.	QIon	Response	Conc	Units	Dev(Min)
46) Dibromomethane	7.586	93	2138	0.922	ug/l	90
47) Bromodichloromethane	7.830	83	3976	0.923	ug/l #	83
48) Methyl methacrylate	7.696	41	3010	0.905	ug/l	88
49) 1,4-Dioxane	7.690	88	1629	18.773	ug/l	93
51) 4-Methyl-2-Pentanone	8.580	43	19480	4.388	ug/l	93
52) Toluene	8.720	92	7389	0.895	ug/l	97
53) t-1,3-Dichloropropene	8.982	75	3042	0.717	ug/l	99
54) cis-1,3-Dichloropropene	8.372	75	4048	0.839	ug/l #	90
55) 1,1,2-Trichloroethane	9.153	97	3123	0.926	ug/l	94
56) Ethyl methacrylate	9.122	69	3699	0.757	ug/l #	83
57) 1,3-Dichloropropane	9.311	76	5487	0.971	ug/l	98
58) 2-Chloroethyl Vinyl ether	8.250	63	10009	4.325	ug/l	98
59) 2-Hexanone	9.433	43	14840	4.440	ug/l	90
60) Dibromochloromethane	9.519	129	2752	0.854	ug/l	90
61) 1,2-Dibromoethane	9.616	107	3166	0.891	ug/l	96
64) Tetrachloroethene	9.275	164	2870	0.958	ug/l	94
65) Chlorobenzene	10.079	112	8621	0.989	ug/l	90
66) 1,1,1,2-Tetrachloroethane	10.165	131	2500	0.809	ug/l #	66
67) Ethyl Benzene	10.195	91	13809	0.894	ug/l	95
68) m/p-Xylenes	10.305	106	10133	1.699	ug/l	95
69) o-Xylene	10.646	106	4882	0.835	ug/l	85
70) Styrene	10.659	104	7958	0.835	ug/l	97
71) Bromoform	10.805	173	1761	0.807	ug/l #	91
73) Isopropylbenzene	10.963	105	12355	0.888	ug/l	100
74) N-amyl acetate	10.848	43	3882	0.824	ug/l	97
75) 1,1,2,2-Tetrachloroethane	11.219	83	5074	1.088	ug/l	96
76) 1,2,3-Trichloropropane	11.244	75	4258m	1.053	ug/l	
77) Bromobenzene	11.201	156	3239	0.999	ug/l	92
78) n-propylbenzene	11.305	91	13866	0.885	ug/l	99
79) 2-Chlorotoluene	11.366	91	8717	0.881	ug/l	100
80) 1,3,5-Trimethylbenzene	11.451	105	10684	0.915	ug/l	98
82) 4-Chlorotoluene	11.457	91	10507	0.936	ug/l	93
83) tert-Butylbenzene	11.719	119	10163	0.890	ug/l	94
84) 1,2,4-Trimethylbenzene	11.756	105	9574	0.814	ug/l	96
85) sec-Butylbenzene	11.896	105	11683	0.827	ug/l	100
86) p-Isopropyltoluene	12.012	119	9788	0.834	ug/l	89
87) 1,3-Dichlorobenzene	11.975	146	6140	0.983	ug/l	96
88) 1,4-Dichlorobenzene	12.042	146	6597m	1.047	ug/l	
89) n-Butylbenzene	12.335	91	8162	0.826	ug/l	97
90) Hexachloroethane	12.542	117	1702	0.916	ug/l	82
91) 1,2-Dichlorobenzene	12.335	146	6330	1.039	ug/l	98
92) 1,2-Dibromo-3-Chloropr...	12.945	75	935	0.960	ug/l	77
93) 1,2,4-Trichlorobenzene	13.591	180	3394	0.934	ug/l	97
94) Hexachlorobutadiene	13.725	225	1734	1.176	ug/l	80
95) Naphthalene	13.780	128	11232	0.881	ug/l	96
96) 1,2,3-Trichlorobenzene	13.963	180	3279	0.905	ug/l	89

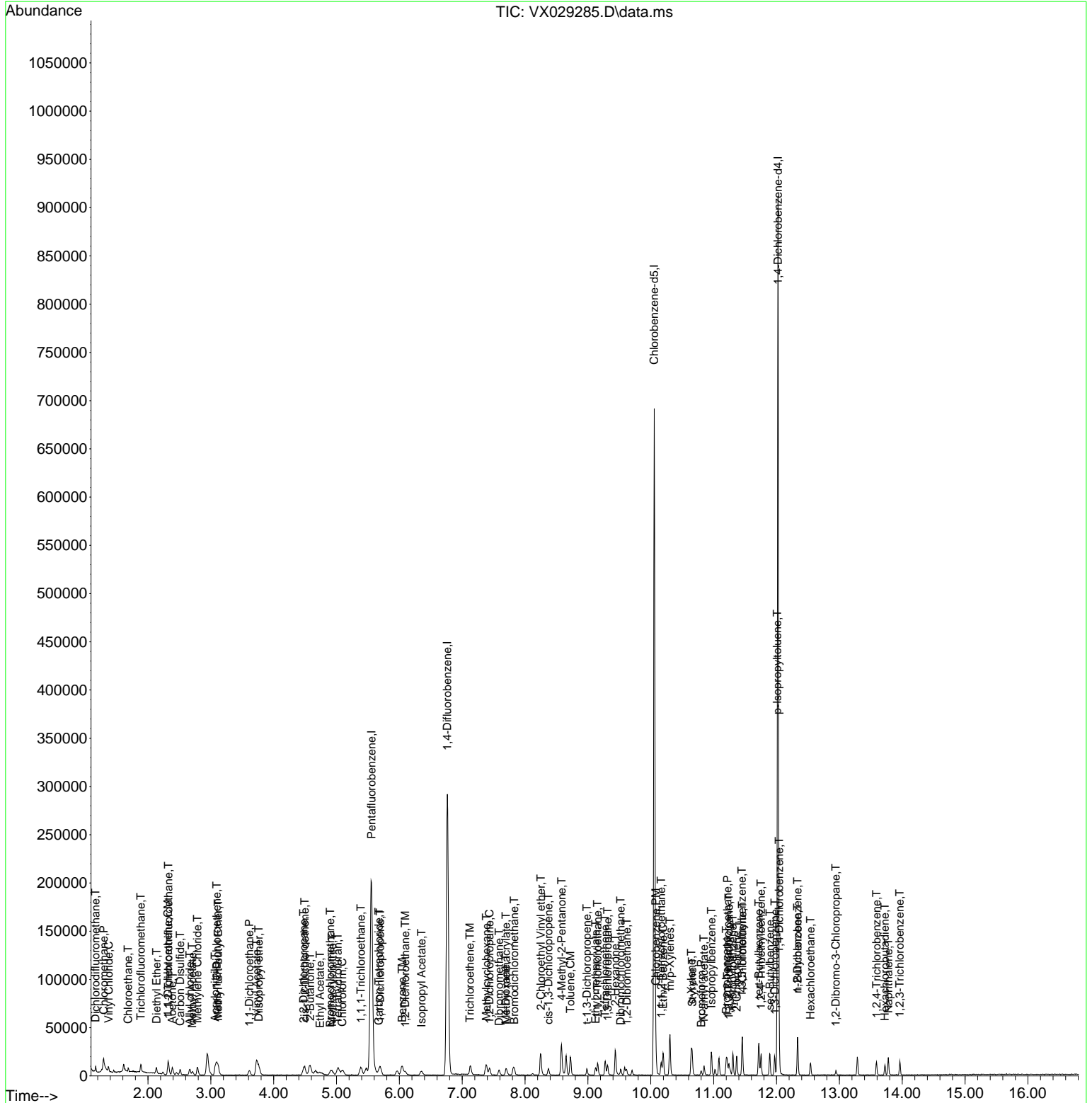
(#) = qualifier out of range (m) = manual integration (+) = signals summed

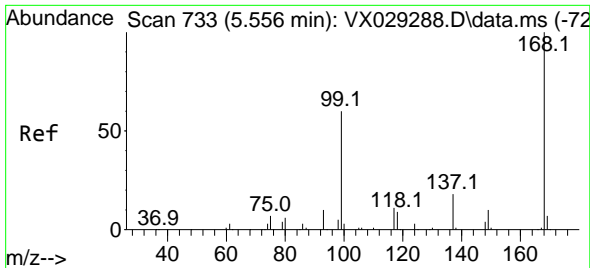
Data Path : Z:\voasrv\HPCHEM1\MSVOA_X\Data\VX060722\
 Data File : VX029285.D
 Acq On : 07 Jun 2022 18:32
 Operator : JC/MD
 Sample : VSTDIC001
 Misc : 5.0mL/MSVOA_X/WATER
 ALS Vial : 11 Sample Multiplier: 1

Instrument :
 MSVOA_X
ClientSampleId :
 VSTDIC001

Quant Time: Jun 08 02:41:22 2022
 Quant Method : Z:\voasrv\HPCHEM1\MSVOA_X\Method\82X060722W.M
 Quant Title : SW846 8260
 QLast Update : Wed Jun 08 02:41:19 2022
 Response via : Initial Calibration

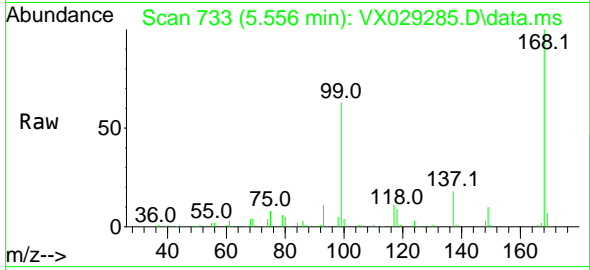
Manual Integrations
APPROVED
 Reviewed By :John Carlone 06/08/2022
 Supervised By :Mahesh Dadoda 06/08/2022





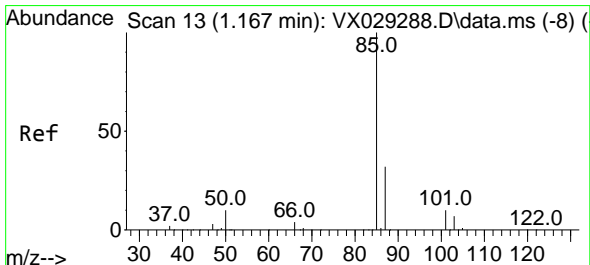
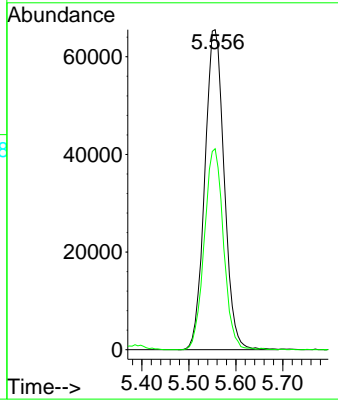
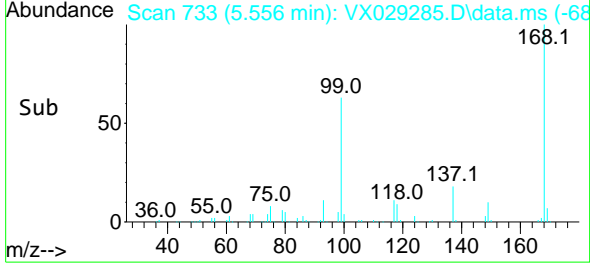
#1
 Pentafluorobenzene
 Concen: 50.000 ug/l
 RT: 5.556 min Scan# 71
 Delta R.T. -0.000 min
 Lab File: VX029285.D
 Acq: 07 Jun 2022 18:32

Instrument : MSVOA_X
 Client Sample Id : VSTDIC001

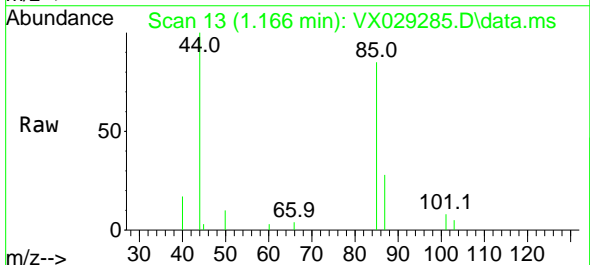


Tgt Ion: 168 Resp: 18760
 Ion Ratio Lower Upper
 168 100
 99 62.8 41.7 62.5

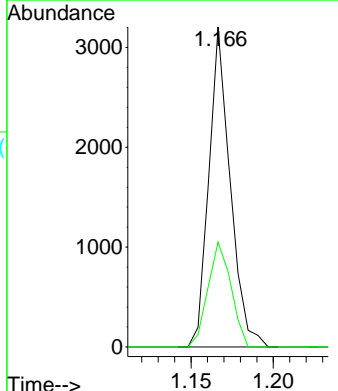
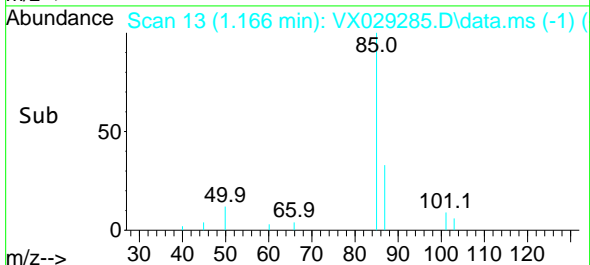
Manual Integrations
APPROVED
 Reviewed By : John Carlone 06/08/2022
 Supervised By : Mahesh Dadoda 06/08/2022

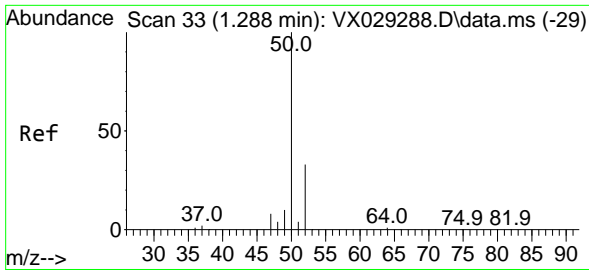


#2
 Dichlorodifluoromethane
 Concen: 0.968 ug/l
 RT: 1.166 min Scan# 13
 Delta R.T. -0.000 min
 Lab File: VX029285.D
 Acq: 07 Jun 2022 18:32



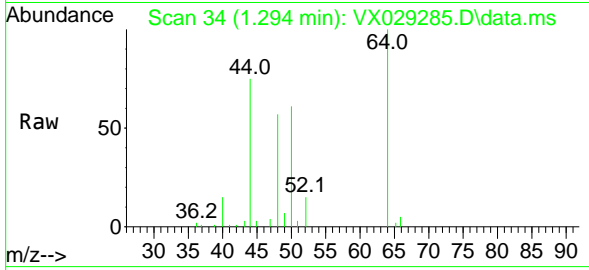
Tgt Ion: 85 Resp: 2892
 Ion Ratio Lower Upper
 85 100
 87 32.8 16.2 48.6





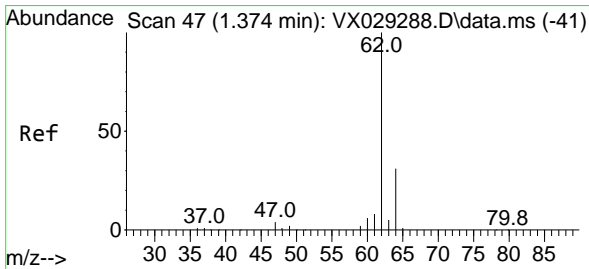
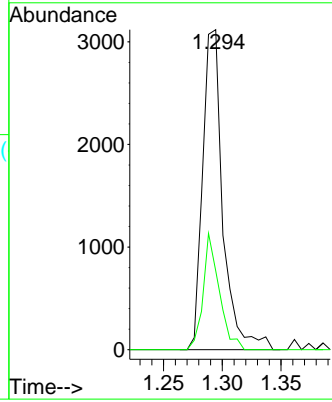
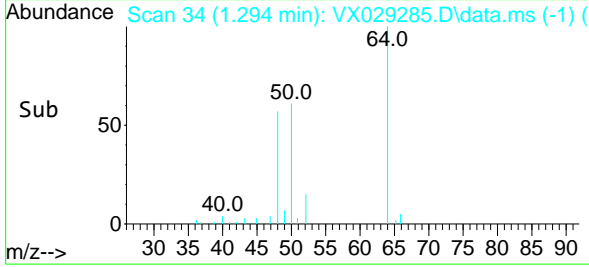
#3
 Chloromethane
 Concen: 1.170 ug/l
 RT: 1.294 min Scan# 34
 Delta R.T. 0.006 min
 Lab File: VX029285.D
 Acq: 07 Jun 2022 18:32

Instrument : MSVOA_X
ClientSampleId : VSTDIC001

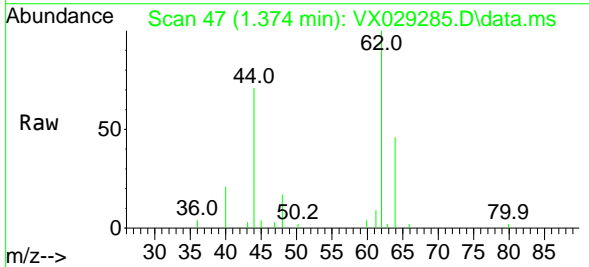


Tgt Ion: 50 Resp: 373
 Ion Ratio Lower Upper
 50 100
 52 24.6 26.4 39.6

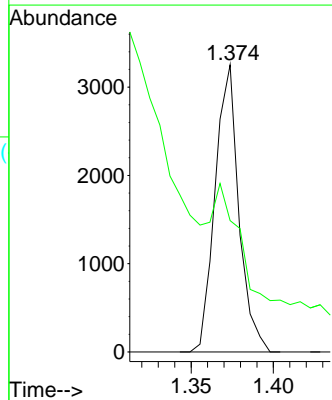
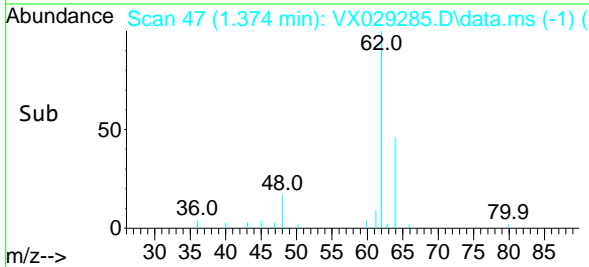
Manual Integrations
APPROVED
 Reviewed By :John Carlone 06/08/2022
 Supervised By :Mahesh Dadoda 06/08/2022

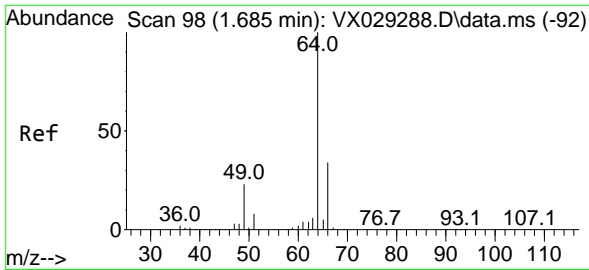


#4
 Vinyl Chloride
 Concen: 0.970 ug/l
 RT: 1.374 min Scan# 47
 Delta R.T. -0.000 min
 Lab File: VX029285.D
 Acq: 07 Jun 2022 18:32



Tgt Ion: 62 Resp: 3268
 Ion Ratio Lower Upper
 62 100
 64 27.7 25.5 38.3





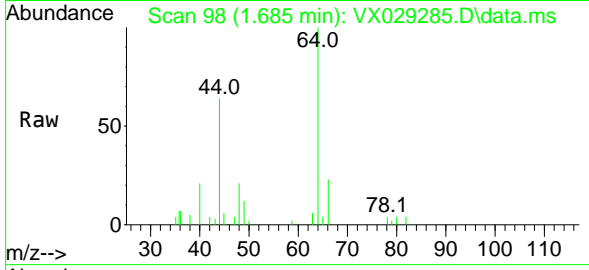
#6
 Chloroethane
 Concen: 1.364 ug/l
 RT: 1.685 min Scan# 98
 Delta R.T. -0.000 min
 Lab File: VX029285.D
 Acq: 07 Jun 2022 18:32

Instrument :

MSVOA_X

Client Sample Id :

VSTDIC001



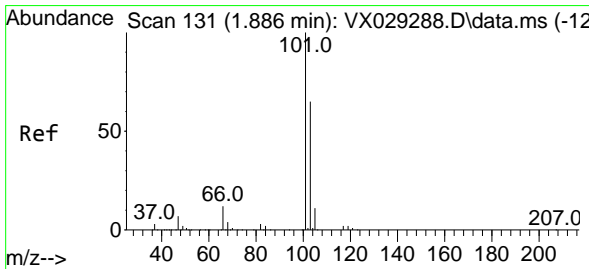
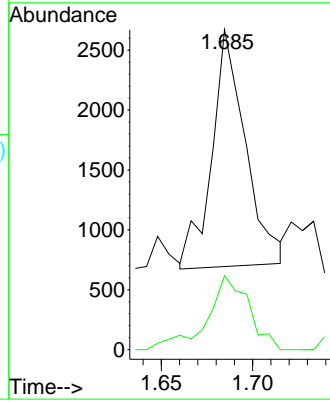
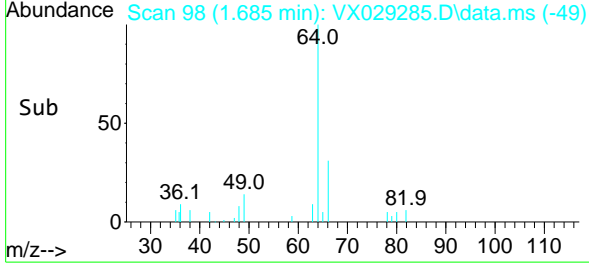
Tgt Ion: 64 Resp: 2549
 Ion Ratio Lower Upper
 64 100
 66 31.7 25.3 37.9

Manual Integrations

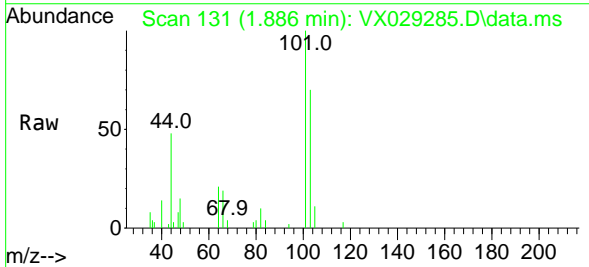
APPROVED

Reviewed By : John Carlone 06/08/2022

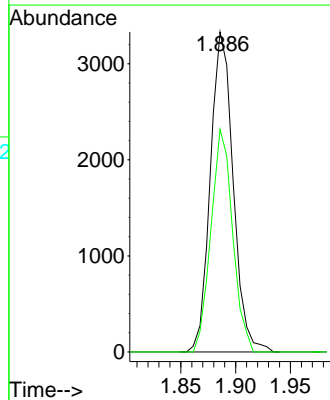
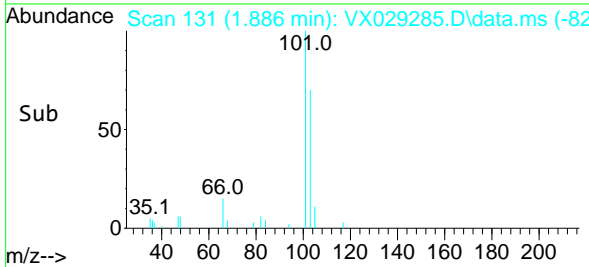
Supervised By : Mahesh Dadoda 06/08/2022

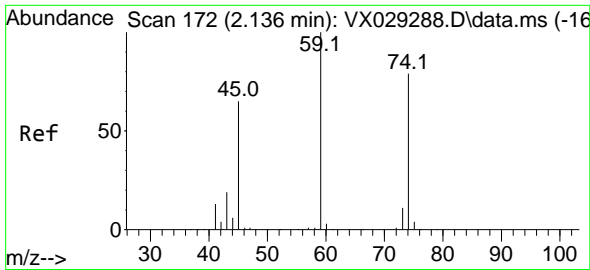


#7
 Trichlorofluoromethane
 Concen: 0.993 ug/l
 RT: 1.886 min Scan# 131
 Delta R.T. -0.000 min
 Lab File: VX029285.D
 Acq: 07 Jun 2022 18:32



Tgt Ion: 101 Resp: 4814
 Ion Ratio Lower Upper
 101 100
 103 69.6 50.5 75.7





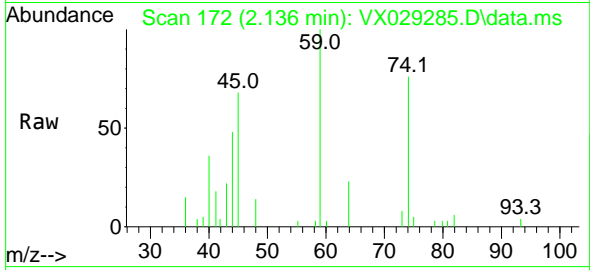
#8
 Diethyl Ether
 Concen: 1.019 ug/l
 RT: 2.136 min Scan# 11
 Delta R.T. -0.000 min
 Lab File: VX029285.D
 Acq: 07 Jun 2022 18:32

Instrument :

MSVOA_X

ClientSampleId :

VSTDIC001



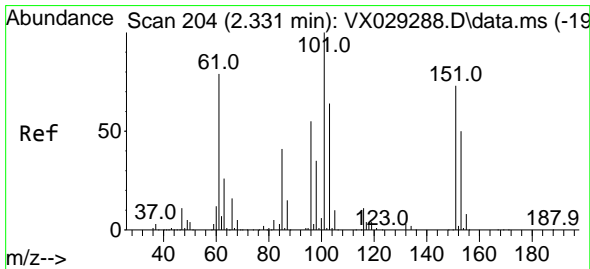
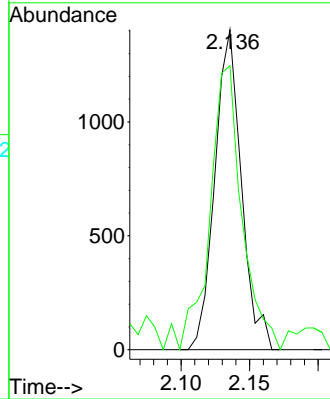
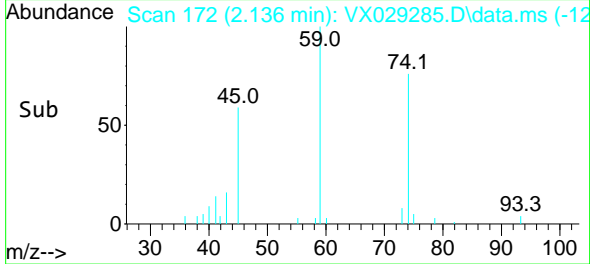
Tgt Ion: 74 Resp: 1890
 Ion Ratio Lower Upper
 74 100
 45 108.7 42.0 126.0

Manual Integrations

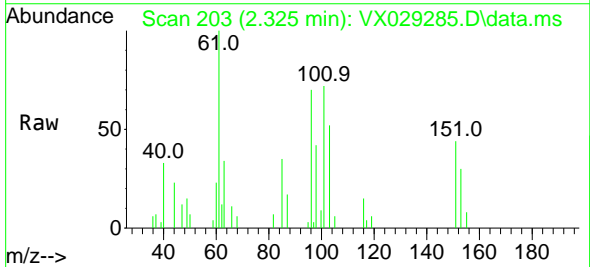
APPROVED

Reviewed By :John Carlone 06/08/2022

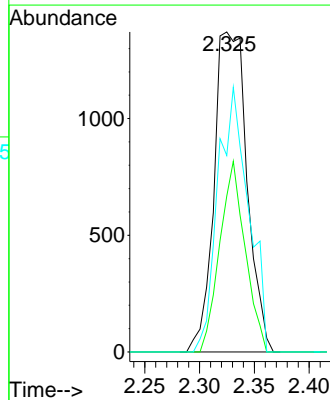
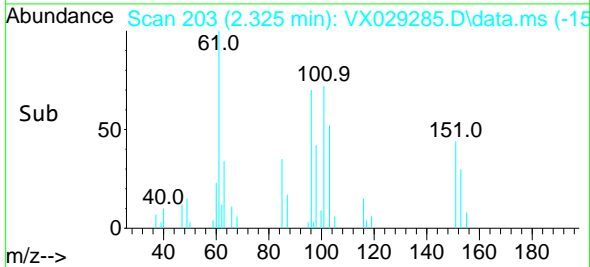
Supervised By :Mahesh Dadoda 06/08/2022

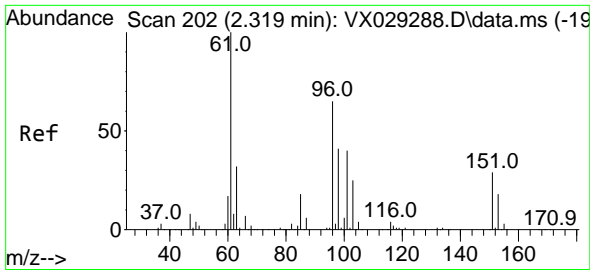


#9
 1,1,2-Trichlorotrifluoroethane
 Concen: 0.978 ug/l
 RT: 2.325 min Scan# 203
 Delta R.T. -0.006 min
 Lab File: VX029285.D
 Acq: 07 Jun 2022 18:32



Tgt Ion:101 Resp: 2873
 Ion Ratio Lower Upper
 101 100
 85 45.9 33.5 50.3
 151 76.6 61.8 92.6





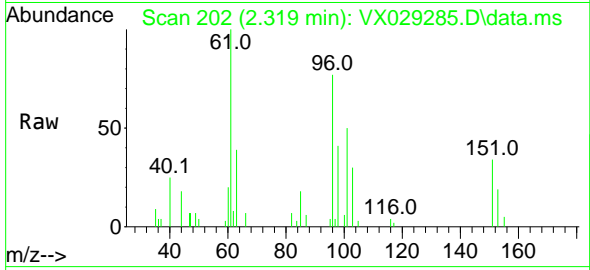
#12
 1,1-Dichloroethene
 Concen: 0.952 ug/l
 RT: 2.319 min Scan# 202
 Delta R.T. -0.000 min
 Lab File: VX029285.D
 Acq: 07 Jun 2022 18:32

Instrument :

MSVOA_X

Client Sample Id :

VSTDIC001



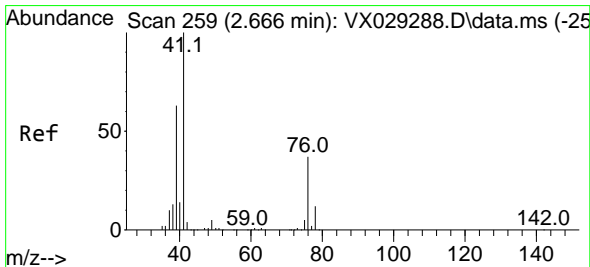
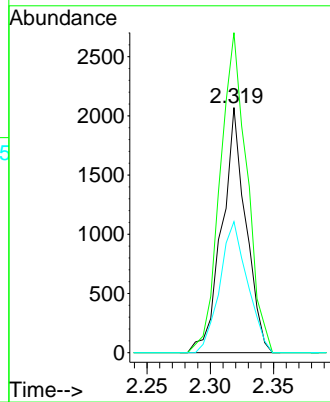
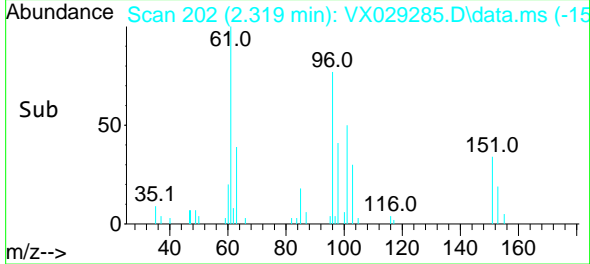
Tgt Ion: 96 Resp: 272
 Ion Ratio Lower Upper
 96 100
 61 130.5 124.6 187.0
 98 53.4 51.0 76.4

Manual Integrations

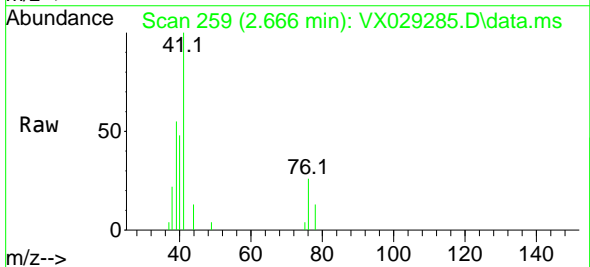
APPROVED

Reviewed By :John Carlone 06/08/2022

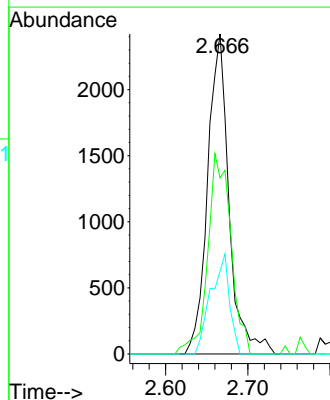
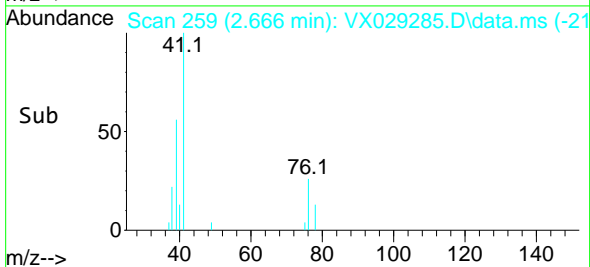
Supervised By :Mahesh Dadoda 06/08/2022

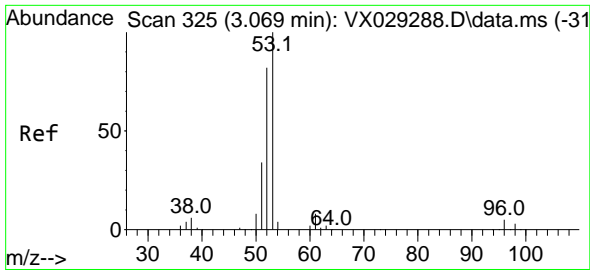


#14
 Allyl chloride
 Concen: 0.956 ug/l
 RT: 2.666 min Scan# 259
 Delta R.T. -0.000 min
 Lab File: VX029285.D
 Acq: 07 Jun 2022 18:32



Tgt Ion: 41 Resp: 4364
 Ion Ratio Lower Upper
 41 100
 39 67.7 50.4 75.6
 76 27.4 32.7 49.1#





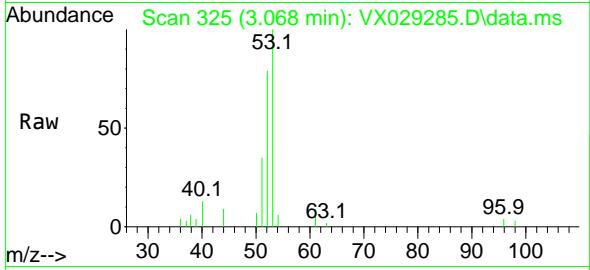
#15
 Acrylonitrile
 Concen: 4.787 ug/l
 RT: 3.068 min Scan# 31
 Delta R.T. -0.000 min
 Lab File: VX029285.D
 Acq: 07 Jun 2022 18:32

Instrument :

MSVOA_X

ClientSampleId :

VSTDIC001



Tgt Ion: 53 Resp: 8608

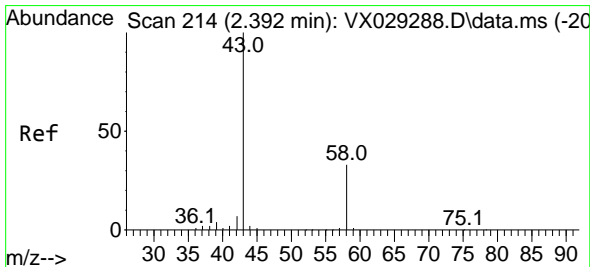
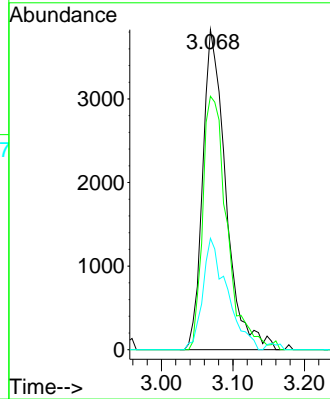
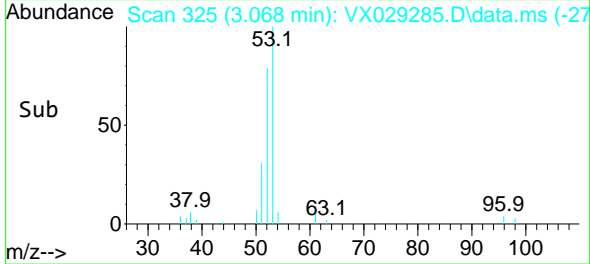
Ion	Ratio	Lower	Upper
53	100		
52	83.4	65.7	98.5
51	36.7	28.4	42.6

Manual Integrations

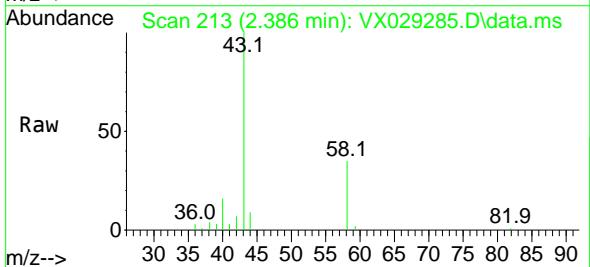
APPROVED

Reviewed By :John Carlone 06/08/2022

Supervised By :Mahesh Dadoda 06/08/2022

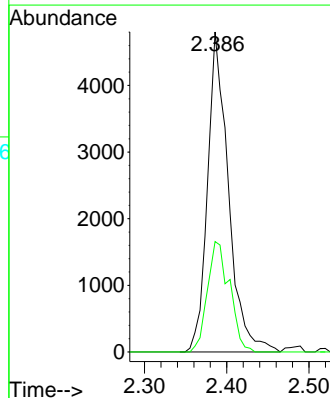
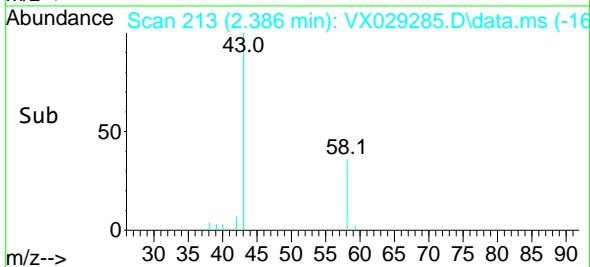


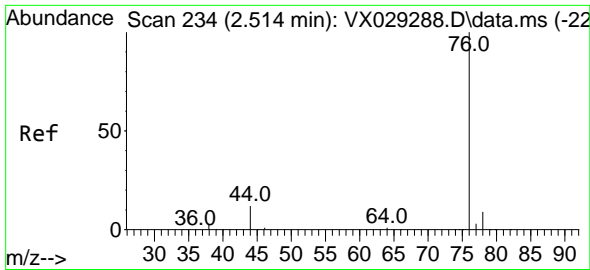
#16
 Acetone
 Concen: 5.544 ug/l
 RT: 2.386 min Scan# 213
 Delta R.T. -0.006 min
 Lab File: VX029285.D
 Acq: 07 Jun 2022 18:32



Tgt Ion: 43 Resp: 8483

Ion	Ratio	Lower	Upper
43	100		
58	34.5	28.8	43.2





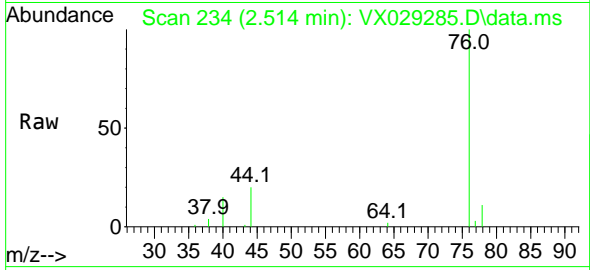
#17
 Carbon Disulfide
 Concen: 1.018 ug/l
 RT: 2.514 min Scan# 211
 Delta R.T. -0.000 min
 Lab File: VX029285.D
 Acq: 07 Jun 2022 18:32

Instrument :

MSVOA_X

ClientSampleId :

VSTDIC001



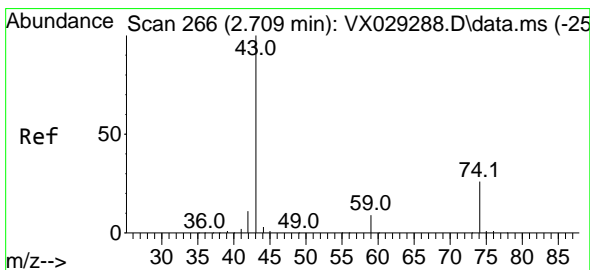
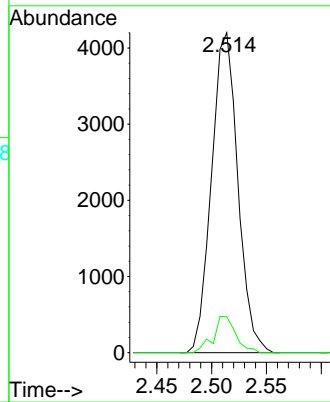
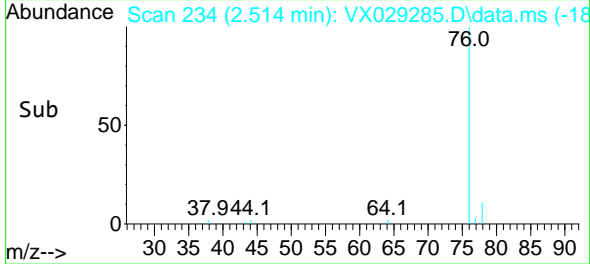
Tgt Ion: 76 Resp: 702
 Ion Ratio Lower Upper
 76 100
 78 11.2 7.2 10.8

Manual Integrations

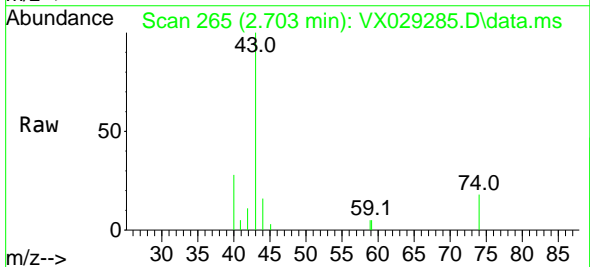
APPROVED

Reviewed By :John Carlone 06/08/2022

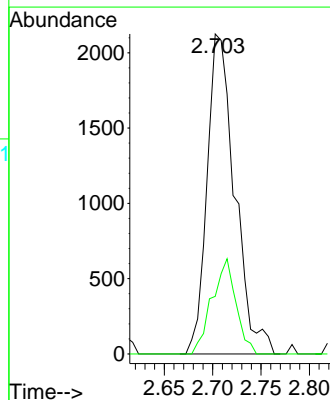
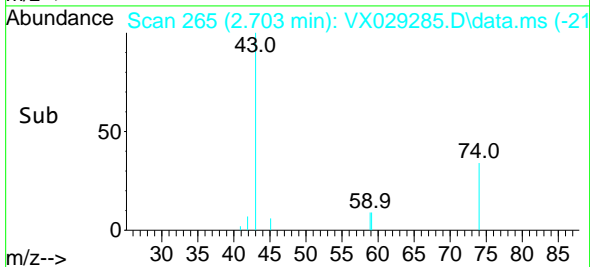
Supervised By :Mahesh Dadoda 06/08/2022

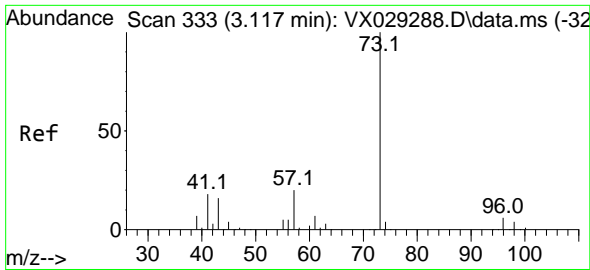


#18
 Methyl Acetate
 Concen: 1.051 ug/l
 RT: 2.703 min Scan# 265
 Delta R.T. -0.006 min
 Lab File: VX029285.D
 Acq: 07 Jun 2022 18:32



Tgt Ion: 43 Resp: 4234
 Ion Ratio Lower Upper
 43 100
 74 25.6 22.8 34.2





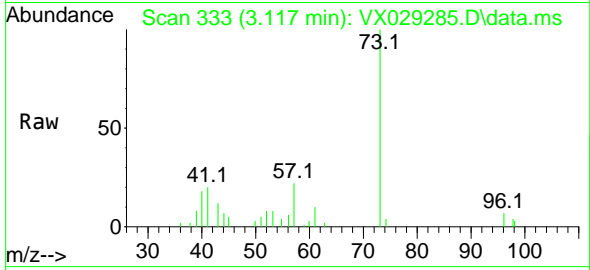
#19
 Methyl tert-butyl Ether
 Concen: 0.893 ug/l
 RT: 3.117 min Scan# 311
 Delta R.T. -0.000 min
 Lab File: VX029285.D
 Acq: 07 Jun 2022 18:32

Instrument :

MSVOA_X

ClientSampleId :

VSTDICC001

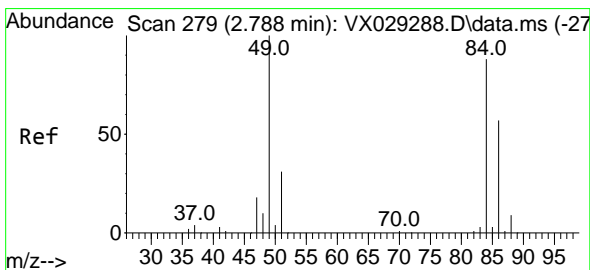
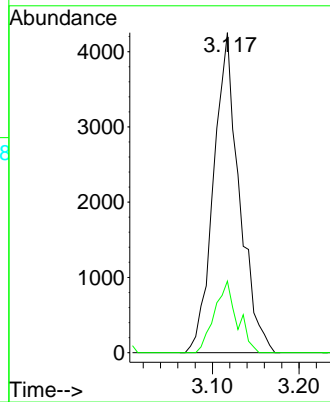
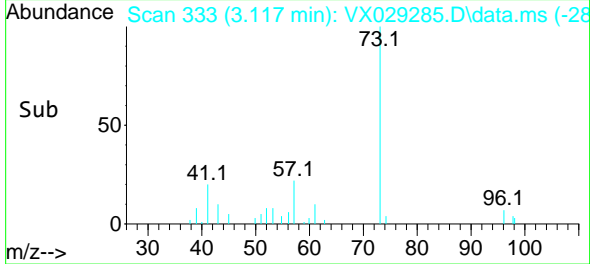


Tgt Ion: 73 Resp: 877
 Ion Ratio Lower Upper
 73 100
 57 22.4 16.8 25.2

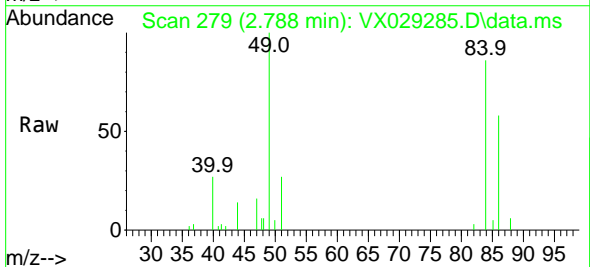
Manual Integrations

APPROVED

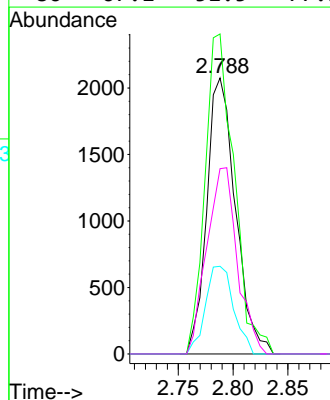
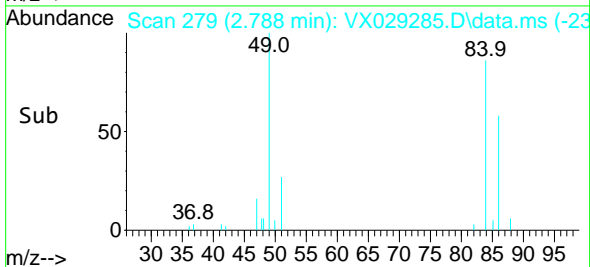
Reviewed By :John Carlone 06/08/2022
 Supervised By :Mahesh Dadoda 06/08/2022

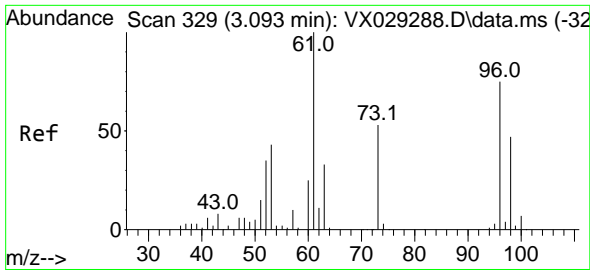


#20
 Methylene Chloride
 Concen: 1.095 ug/l
 RT: 2.788 min Scan# 279
 Delta R.T. -0.000 min
 Lab File: VX029285.D
 Acq: 07 Jun 2022 18:32



Tgt Ion: 84 Resp: 3778
 Ion Ratio Lower Upper
 84 100
 49 116.0 85.5 128.3
 51 31.8 26.6 39.8
 86 67.1 51.5 77.3





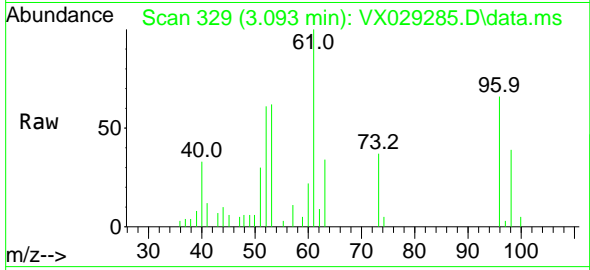
#21
 trans-1,2-Dichloroethene
 Concen: 1.003 ug/l
 RT: 3.093 min Scan# 316
 Delta R.T. -0.000 min
 Lab File: VX029285.D
 Acq: 07 Jun 2022 18:32

Instrument :

MSVOA_X

ClientSampleId :

VSTDIC001

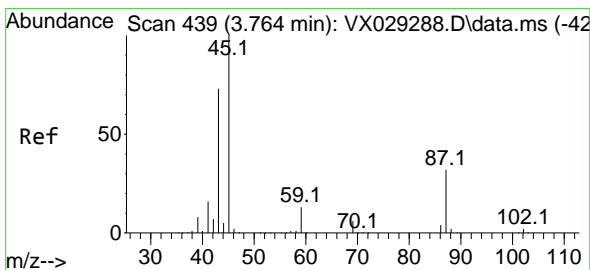
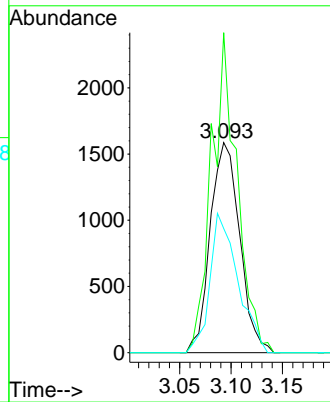
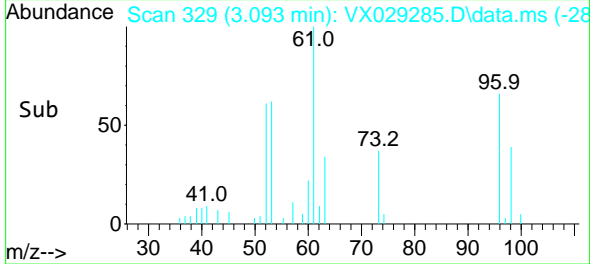


Tgt Ion: 96 Resp: 316
 Ion Ratio Lower Upper
 96 100
 61 152.3 105.4 158.2
 98 59.1 50.0 75.0

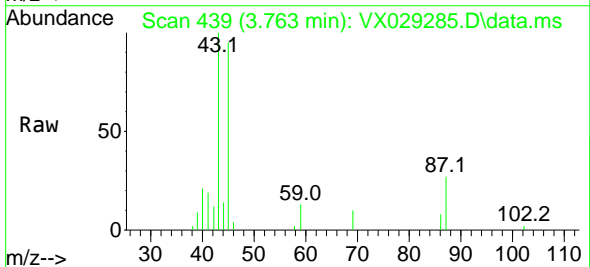
Manual Integrations

APPROVED

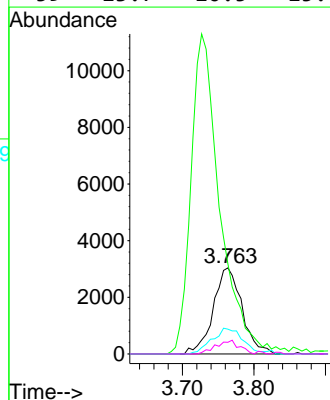
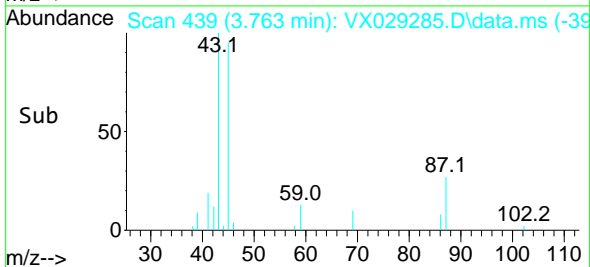
Reviewed By :John Carlone 06/08/2022
 Supervised By :Mahesh Dadoda 06/08/2022

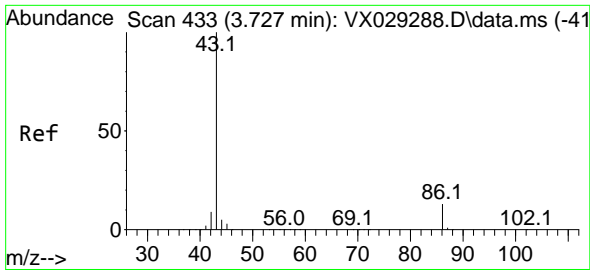


#22
 Diisopropyl ether
 Concen: 0.918 ug/l
 RT: 3.763 min Scan# 439
 Delta R.T. -0.000 min
 Lab File: VX029285.D
 Acq: 07 Jun 2022 18:32



Tgt Ion: 45 Resp: 8463
 Ion Ratio Lower Upper
 45 100
 43 99.6 50.8 76.2#
 87 28.8 26.6 39.8
 59 13.7 10.5 15.7





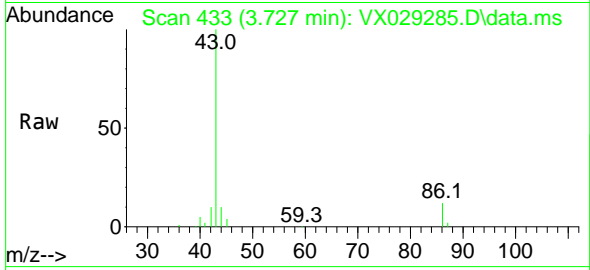
#23
 Vinyl Acetate
 Concen: 4.145 ug/l
 RT: 3.727 min Scan# 411
 Delta R.T. -0.000 min
 Lab File: VX029285.D
 Acq: 07 Jun 2022 18:32

Instrument :

MSVOA_X

Client Sample Id :

VSTDIC001



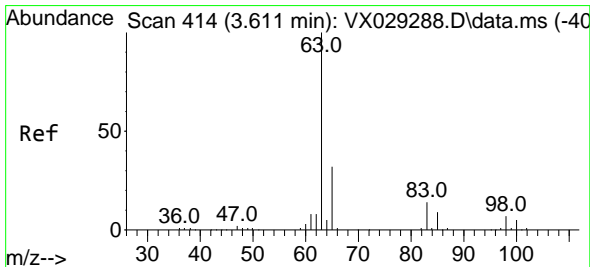
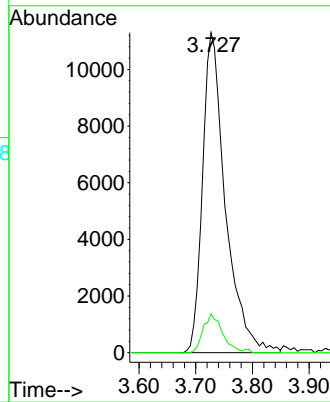
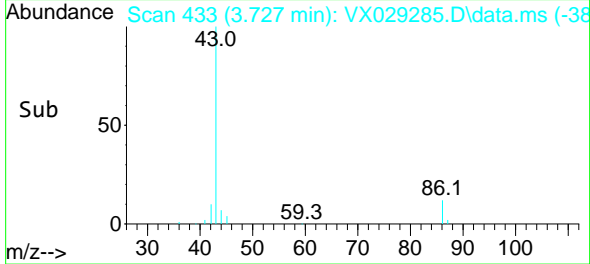
Tgt Ion: 43 Resp: 3174
 Ion Ratio Lower Upper
 43 100
 86 12.2 10.8 16.2

Manual Integrations

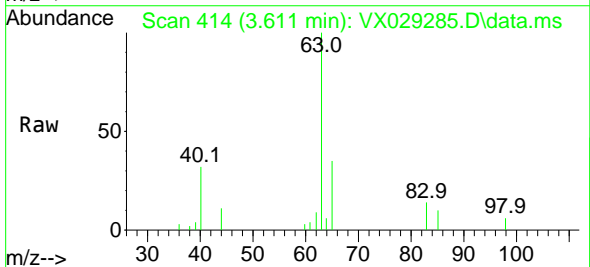
APPROVED

Reviewed By :John Carlone 06/08/2022

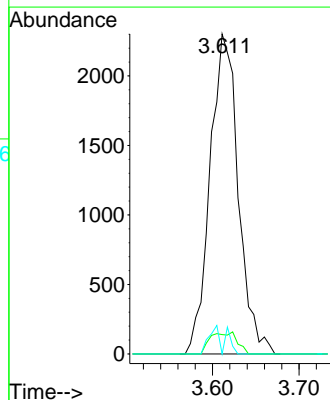
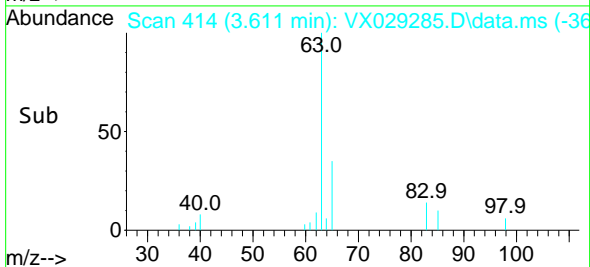
Supervised By :Mahesh Dadoda 06/08/2022

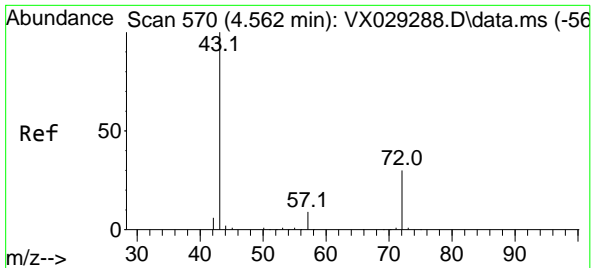


#24
 1,1-Dichloroethane
 Concen: 0.934 ug/l
 RT: 3.611 min Scan# 414
 Delta R.T. -0.000 min
 Lab File: VX029285.D
 Acq: 07 Jun 2022 18:32



Tgt Ion: 63 Resp: 5219
 Ion Ratio Lower Upper
 63 100
 98 6.0 3.9 11.7
 100 0.0 2.4 7.2#





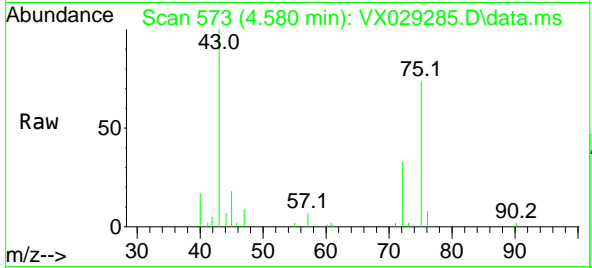
#25
 2-Butanone
 Concen: 4.841 ug/l
 RT: 4.580 min Scan# 51
 Delta R.T. 0.018 min
 Lab File: VX029285.D
 Acq: 07 Jun 2022 18:32

Instrument :

MSVOA_X

Client Sample Id :

VSTDIC001

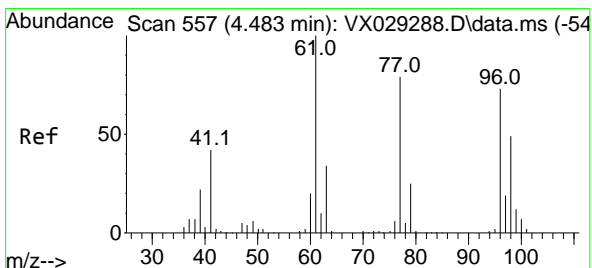
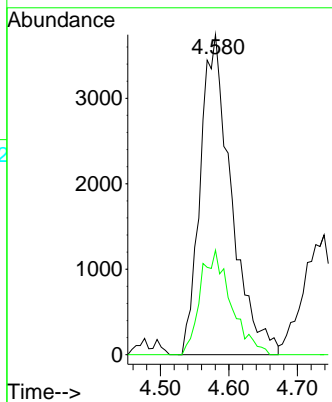
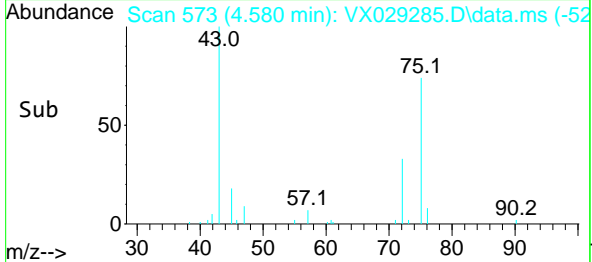


Tgt Ion: 43 Resp: 1174
 Ion Ratio Lower Upper
 43 100
 72 32.7 24.4 36.6

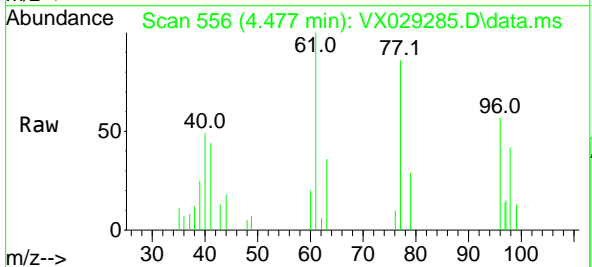
Manual Integrations

APPROVED

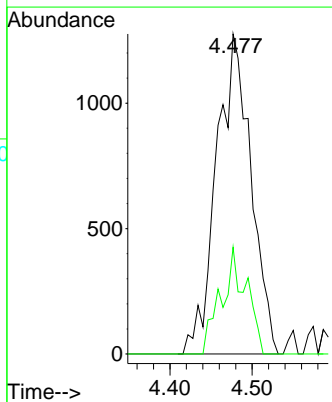
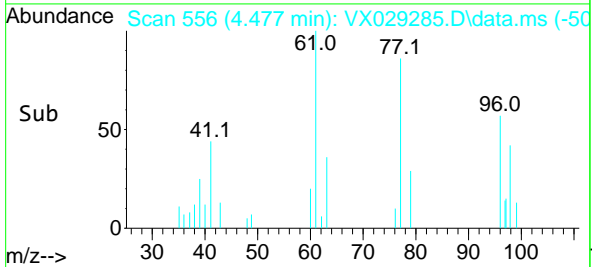
Reviewed By :John Carlone 06/08/2022
 Supervised By :Mahesh Dadoda 06/08/2022

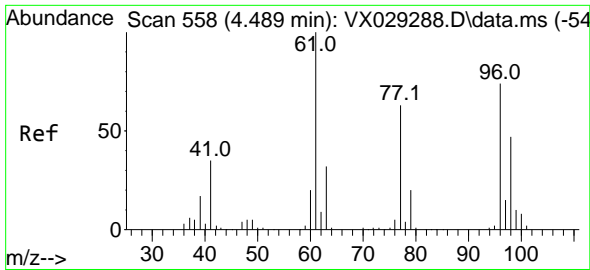


#26
 2,2-Dichloropropane
 Concen: 0.936 ug/l
 RT: 4.477 min Scan# 556
 Delta R.T. -0.006 min
 Lab File: VX029285.D
 Acq: 07 Jun 2022 18:32



Tgt Ion: 77 Resp: 3725
 Ion Ratio Lower Upper
 77 100
 97 24.3 11.8 35.4





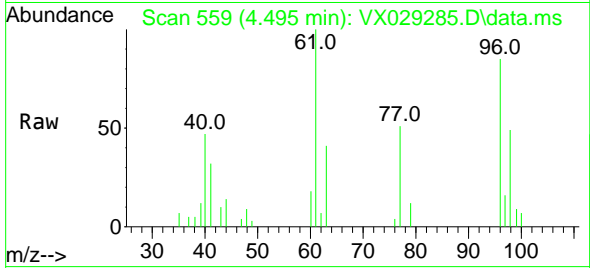
#27
 cis-1,2-Dichloroethene
 Concen: 1.002 ug/l
 RT: 4.495 min Scan# 511
 Delta R.T. 0.006 min
 Lab File: VX029285.D
 Acq: 07 Jun 2022 18:32

Instrument :

MSVOA_X

ClientSampleId :

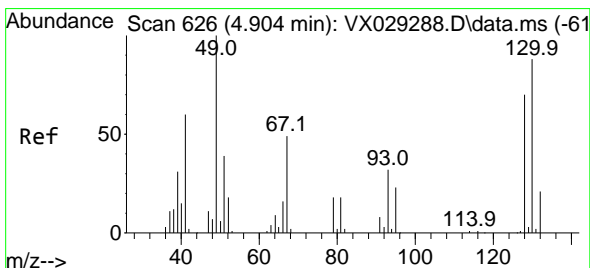
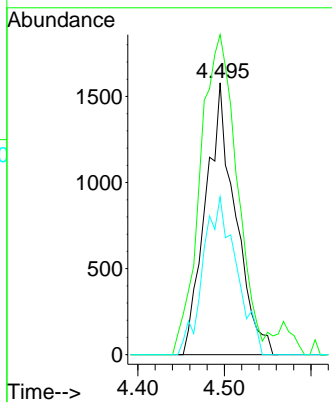
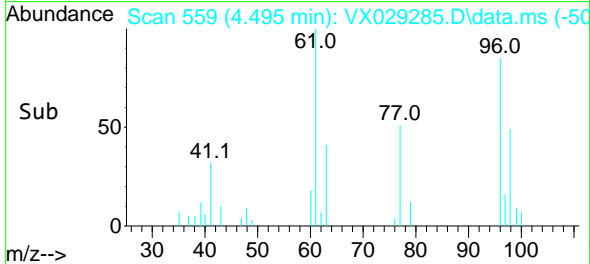
VSTDICC001



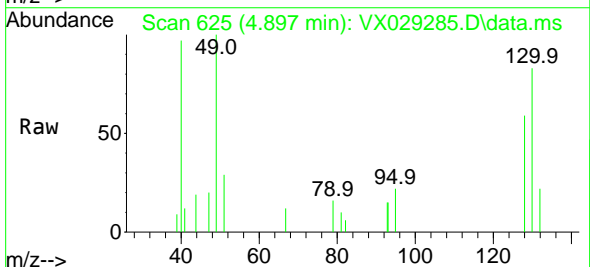
Tgt Ion: 96 Resp: 376
 Ion Ratio Lower Upper
 96 100
 61 147.5 0.0 283.8
 98 65.0 0.0 129.8

Manual Integrations
 APPROVED

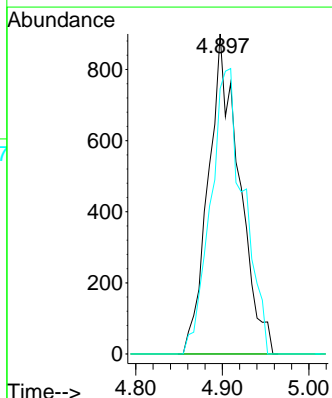
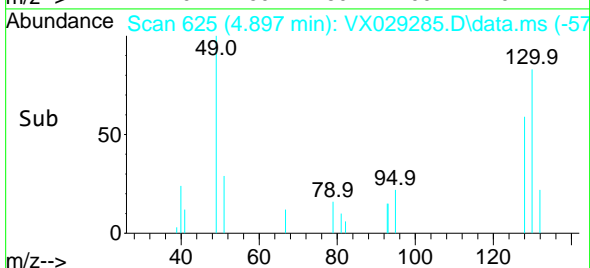
Reviewed By :John Carlone 06/08/2022
 Supervised By :Mahesh Dadoda 06/08/2022

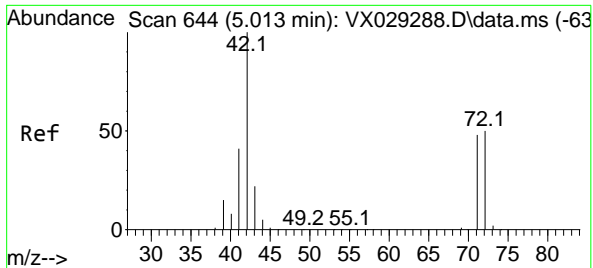


#28
 Bromochloromethane
 Concen: 1.018 ug/l
 RT: 4.897 min Scan# 625
 Delta R.T. -0.006 min
 Lab File: VX029285.D
 Acq: 07 Jun 2022 18:32



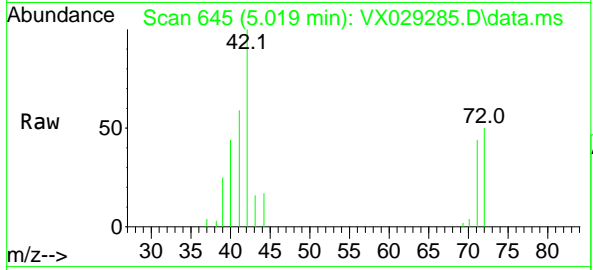
Tgt Ion: 49 Resp: 2232
 Ion Ratio Lower Upper
 49 100
 129 0.0 0.0 4.4
 130 95.5 70.7 106.1





#29
 Tetrahydrofuran
 Concen: 4.680 ug/l
 RT: 5.019 min Scan# 644
 Delta R.T. 0.006 min
 Lab File: VX029285.D
 Acq: 07 Jun 2022 18:32

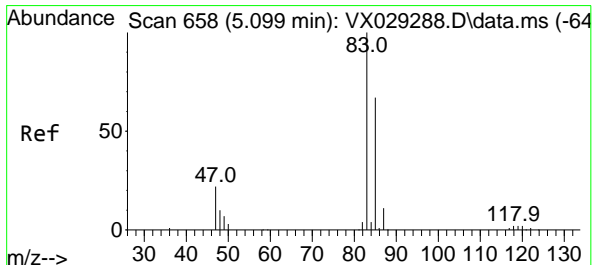
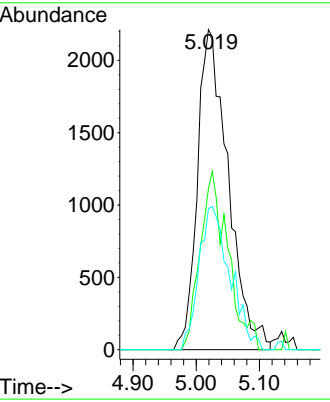
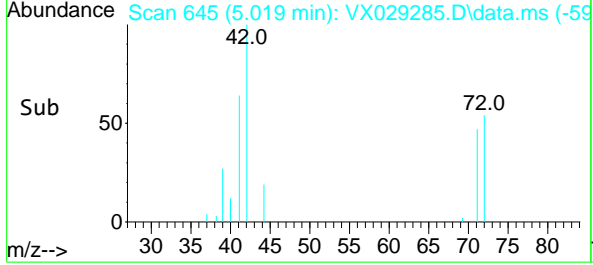
Instrument : MSVOA_X
 ClientSampleId : VSTDIC001



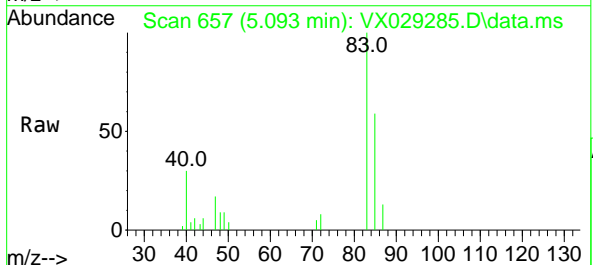
Tgt Ion: 42 Resp: 747

Ion	Ratio	Lower	Upper
42	100		
72	50.6	44.1	66.1
71	45.3	40.5	60.7

Manual Integrations
APPROVED
 Reviewed By :John Carlone 06/08/2022
 Supervised By :Mahesh Dadoda 06/08/2022

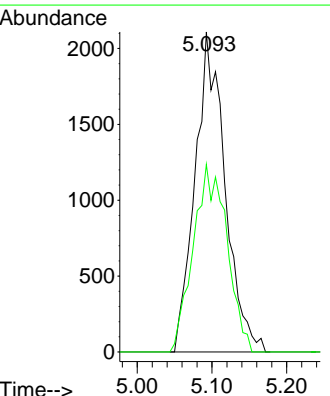
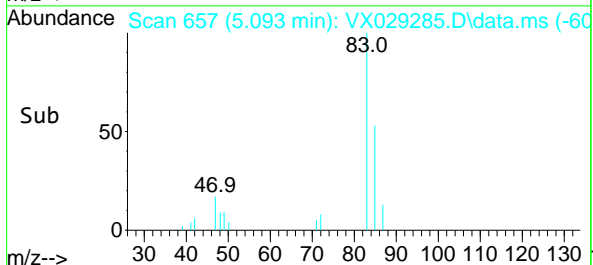


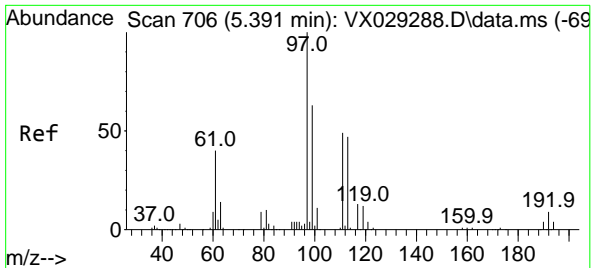
#30
 Chloroform
 Concen: 0.984 ug/l
 RT: 5.093 min Scan# 657
 Delta R.T. -0.006 min
 Lab File: VX029285.D
 Acq: 07 Jun 2022 18:32



Tgt Ion: 83 Resp: 5865

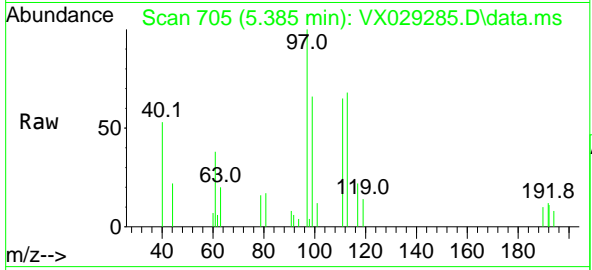
Ion	Ratio	Lower	Upper
83	100		
85	58.6	52.7	79.1





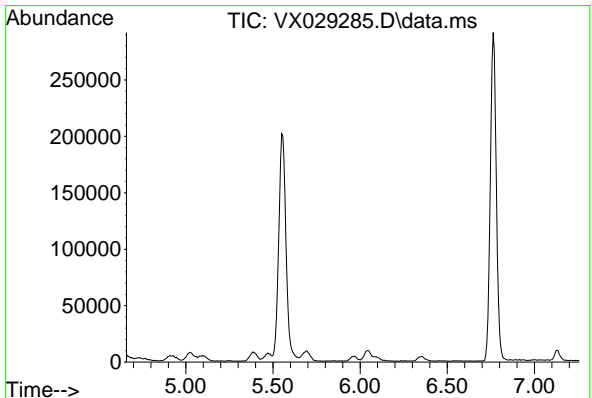
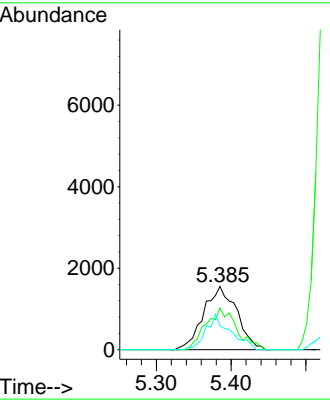
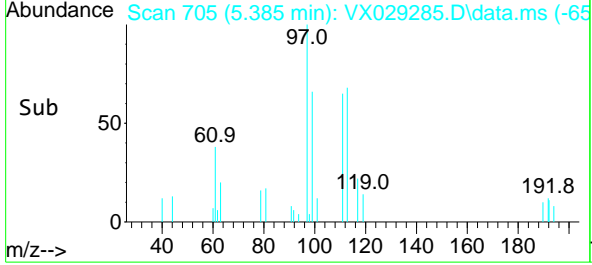
#32
 1,1,1-Trichloroethane
 Concen: 0.931 ug/l
 RT: 5.385 min Scan# 706
 Delta R.T. -0.006 min
 Lab File: VX029285.D
 Acq: 07 Jun 2022 18:32

Instrument : MSVOA_X
 Client Sample Id : VSTDIC001

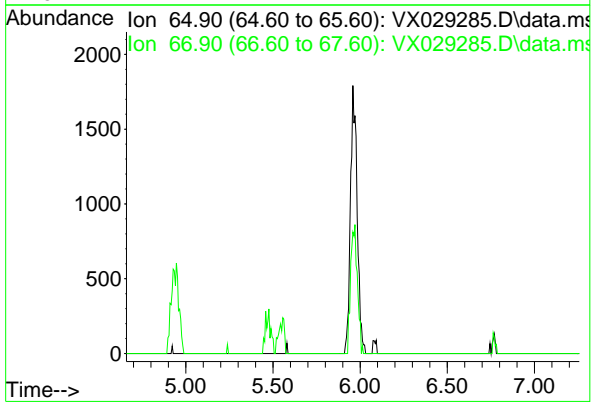


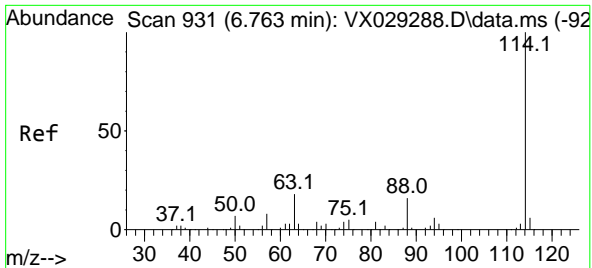
Tgt Ion: 97 Resp: 4774
 Ion Ratio Lower Upper
 97 100
 99 0.0 51.8 77.6
 61 41.0 34.0 51.0

Manual Integrations
APPROVED
 Reviewed By :John Carlone 06/08/2022
 Supervised By :Mahesh Dadoda 06/08/2022



#33
 1,2-Dichloroethane-d4
 Concen: 0.000 ug/l
 Expected RT: 5.96 min
 Lab File: VX029285.D
 Acq: 07 Jun 2022 18:32
 Tgt Ion: 65
 Sig Exp Ratio
 65 100
 67 53.7





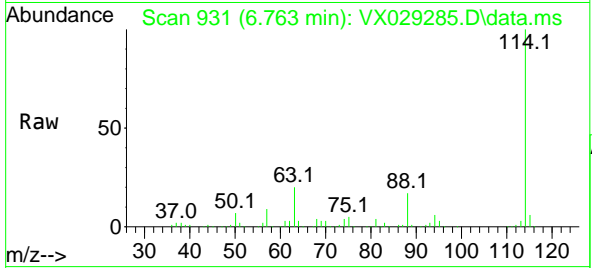
#34
 1,4-Difluorobenzene
 Concen: 50.000 ug/l
 RT: 6.763 min Scan# 91
 Delta R.T. -0.000 min
 Lab File: VX029285.D
 Acq: 07 Jun 2022 18:32

Instrument :

MSVOA_X

ClientSampleId :

VSTDIC001

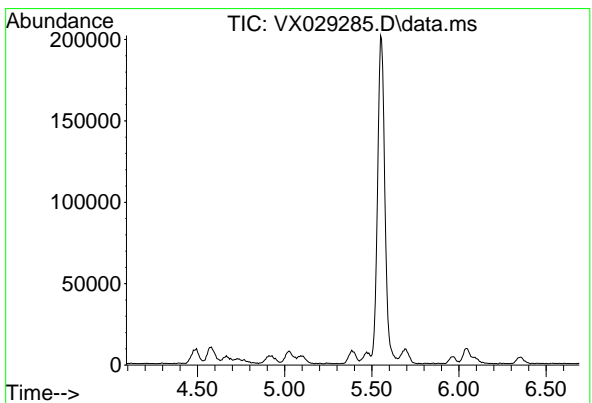
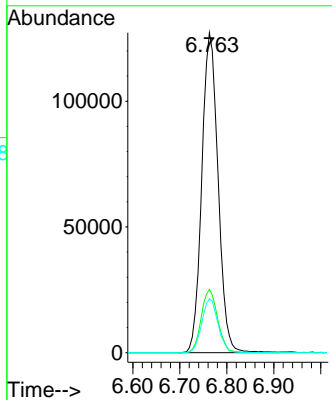
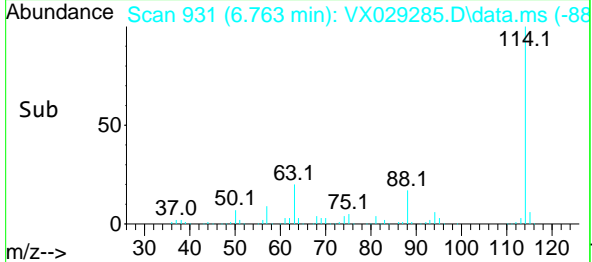


Tgt Ion:114 Resp: 305680
 Ion Ratio Lower Upper
 114 100
 63 19.8 0.0 36.8
 88 16.8 0.0 32.4

Manual Integrations

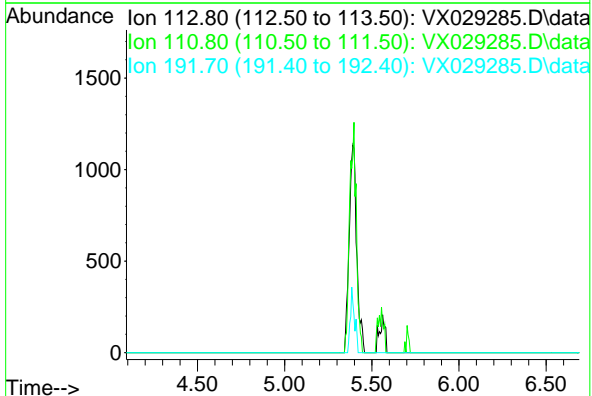
APPROVED

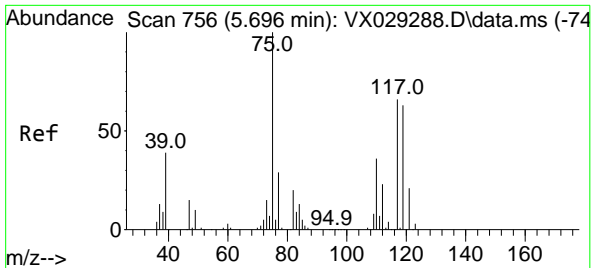
Reviewed By :John Carlone 06/08/2022
 Supervised By :Mahesh Dadoda 06/08/2022



#35
 Dibromofluoromethane
 Concen: 0.000 ug/l
 Expected RT: 5.39 min
 Lab File: VX029285.D
 Acq: 07 Jun 2022 18:32

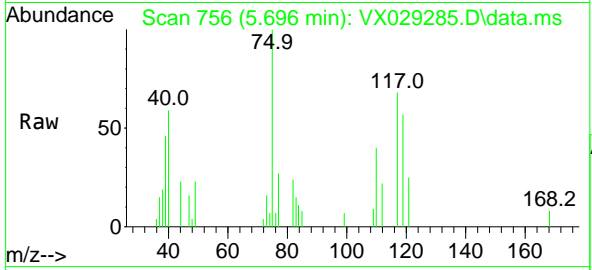
Tgt Ion: 113
 Sig Exp Ratio
 113 100
 111 103.5
 192 21.1





#36
 1,1-Dichloropropene
 Concen: 0.987 ug/l
 RT: 5.696 min Scan# 756
 Delta R.T. -0.000 min
 Lab File: VX029285.D
 Acq: 07 Jun 2022 18:32

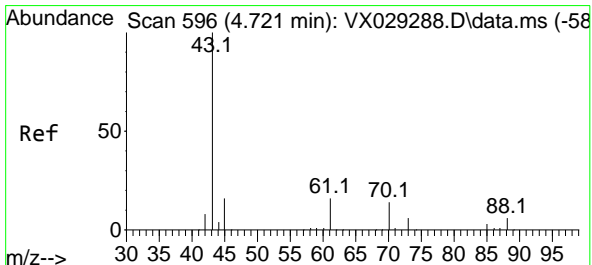
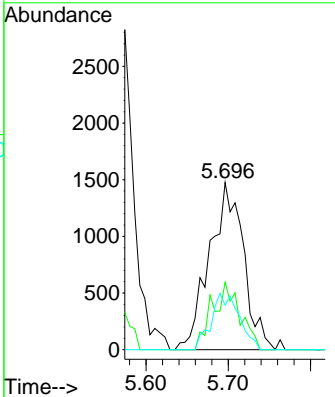
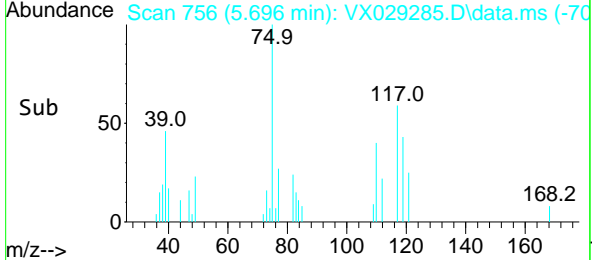
Instrument : MSVOA_X
 ClientSampleId : VSTDIC001



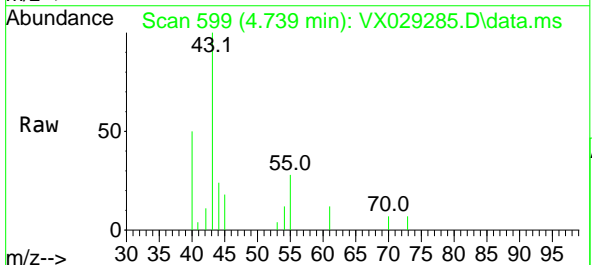
Tgt Ion: 75 Resp: 4238

Ion	Ratio	Lower	Upper
75	100		
110	32.5	18.3	54.8
77	27.8	24.8	37.2

Manual Integrations
APPROVED
 Reviewed By :John Carlone 06/08/2022
 Supervised By :Mahesh Dadoda 06/08/2022

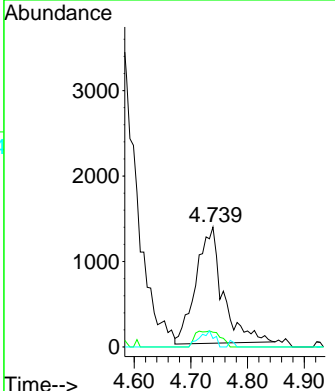
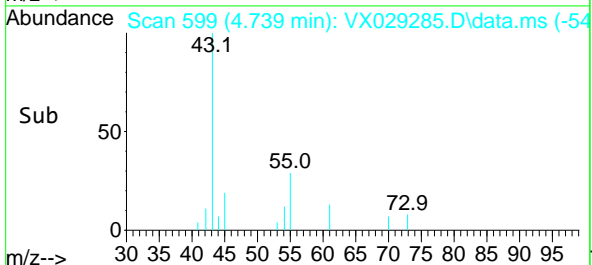


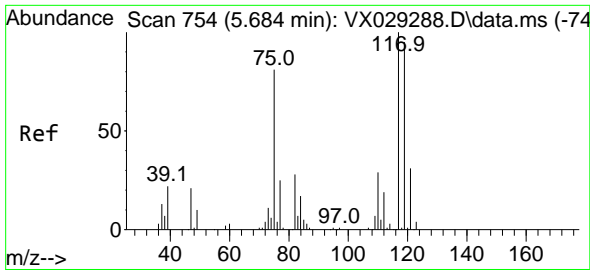
#37
 Ethyl Acetate
 Concen: 1.030 ug/l
 RT: 4.739 min Scan# 599
 Delta R.T. 0.018 min
 Lab File: VX029285.D
 Acq: 07 Jun 2022 18:32



Tgt Ion: 43 Resp: 4483

Ion	Ratio	Lower	Upper
43	100		
61	12.8	12.6	19.0
70	7.6	10.2	15.2





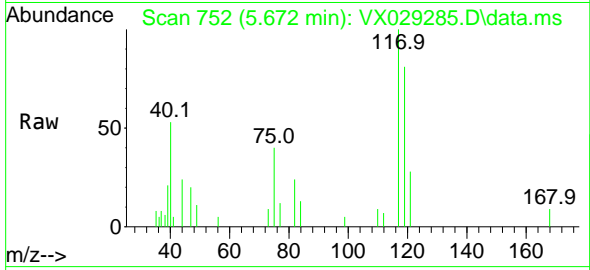
#38
 Carbon Tetrachloride
 Concen: 0.948 ug/l
 RT: 5.672 min Scan# 752
 Delta R.T. -0.012 min
 Lab File: VX029285.D
 Acq: 07 Jun 2022 18:32

Instrument :

MSVOA_X

ClientSampleId :

VSTDIC001

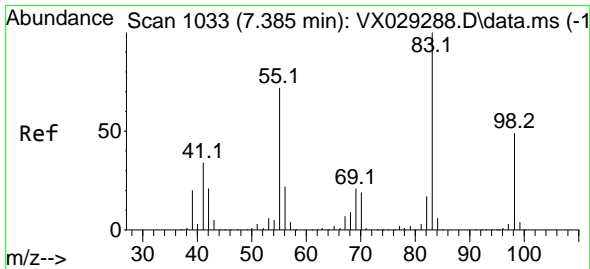
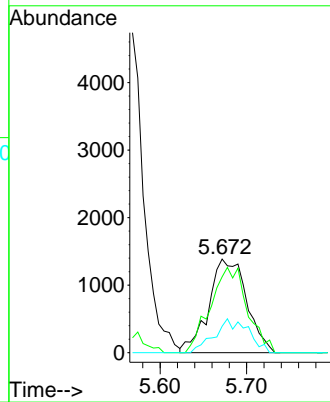
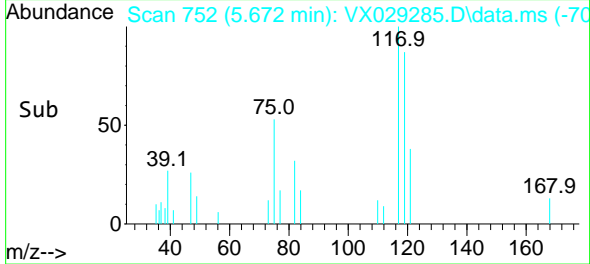


Tgt Ion:117 Resp: 4214
 Ion Ratio Lower Upper
 117 100
 119 81.0 77.3 115.9
 121 28.3 24.2 36.2

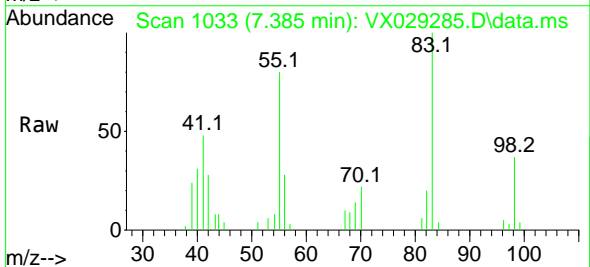
Manual Integrations

APPROVED

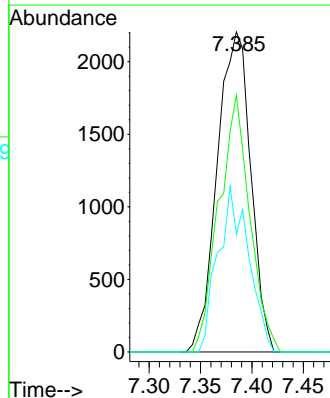
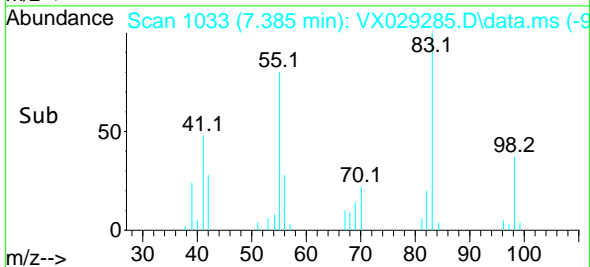
Reviewed By :John Carlone 06/08/2022
 Supervised By :Mahesh Dadoda 06/08/2022

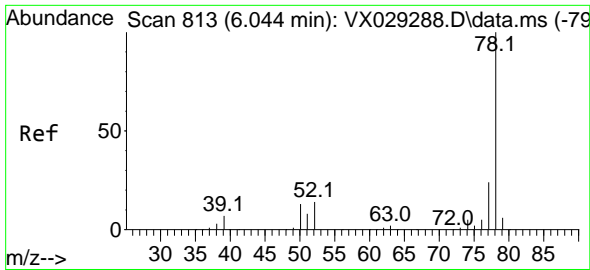


#39
 Methylcyclohexane
 Concen: 0.940 ug/l
 RT: 7.385 min Scan# 1033
 Delta R.T. -0.000 min
 Lab File: VX029285.D
 Acq: 07 Jun 2022 18:32



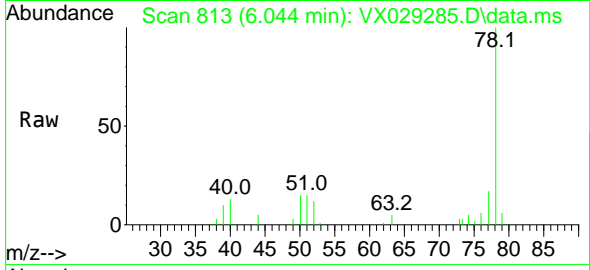
Tgt Ion: 83 Resp: 5003
 Ion Ratio Lower Upper
 83 100
 55 80.2 54.6 81.8
 98 36.7 37.4 56.2#





#40
Benzene
Concen: 0.967 ug/l
RT: 6.044 min Scan# 813
Delta R.T. -0.000 min
Lab File: VX029285.D
Acq: 07 Jun 2022 18:32

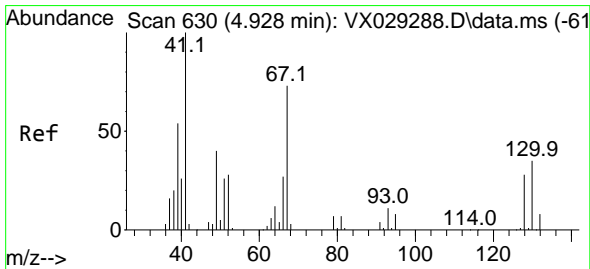
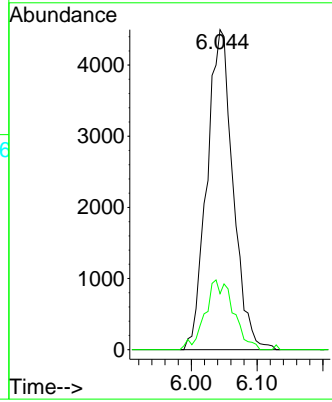
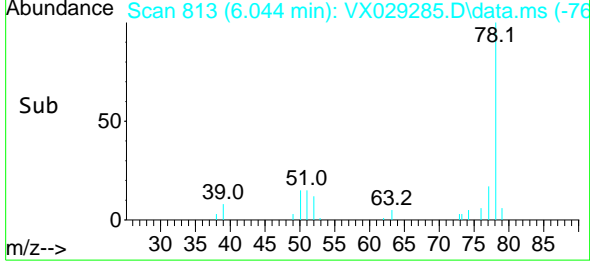
Instrument :
MSVOA_X
Client Sample Id :
VSTDIC001



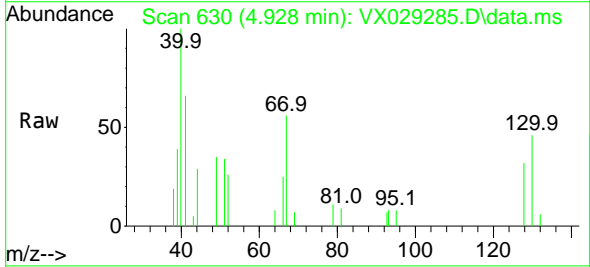
Tgt Ion: 78 Resp: 12449
Ion Ratio Lower Upper
78 100
77 17.5 19.3 28.9

Manual Integrations
APPROVED

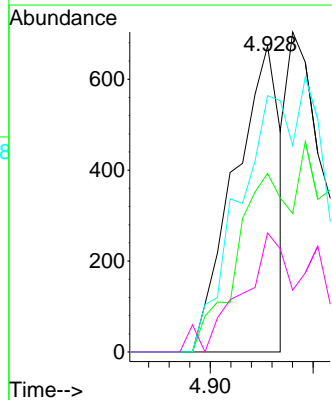
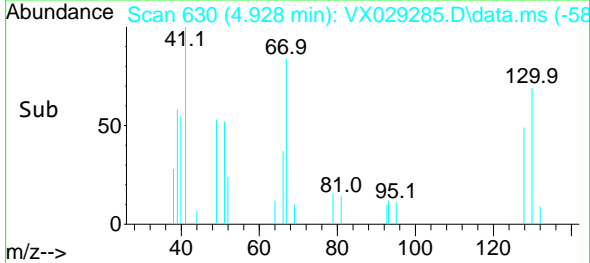
Reviewed By :John Carlone 06/08/2022
Supervised By :Mahesh Dadoda 06/08/2022

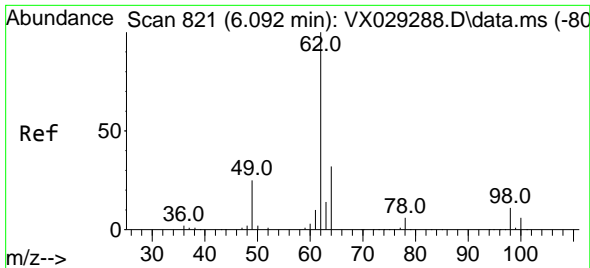


#41
Methacrylonitrile
Concen: 0.477 ug/l
RT: 4.928 min Scan# 630
Delta R.T. -0.000 min
Lab File: VX029285.D
Acq: 07 Jun 2022 18:32



Tgt Ion: 41 Resp: 1046
Ion Ratio Lower Upper
41 100
39 69.2 43.0 64.4#
67 174.1 70.2 105.4#
52 40.1 26.0 39.0#





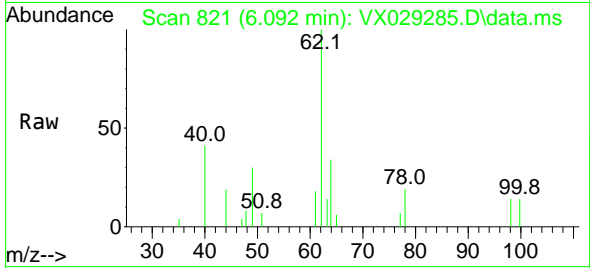
#42
 1,2-Dichloroethane
 Concen: 0.924 ug/l
 RT: 6.092 min Scan# 811
 Delta R.T. -0.000 min
 Lab File: VX029285.D
 Acq: 07 Jun 2022 18:32

Instrument :

MSVOA_X

ClientSampleId :

VSTDIC001

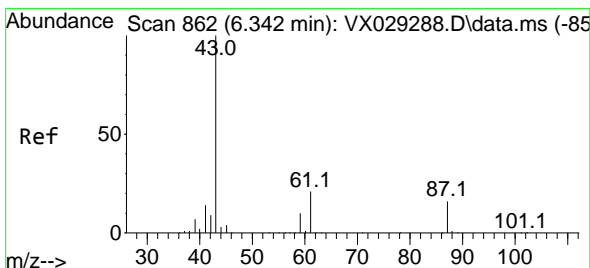
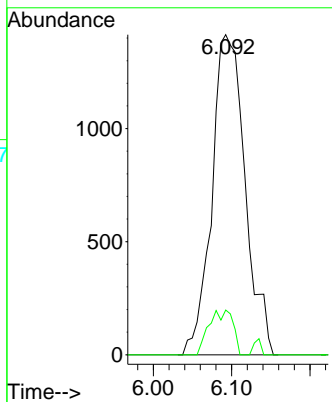
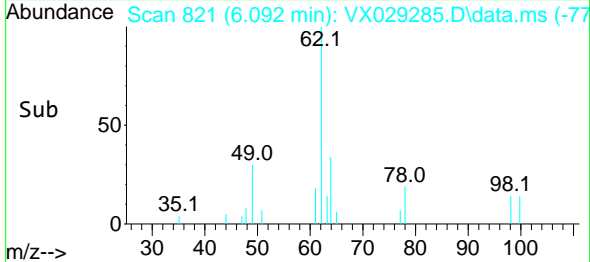


Tgt Ion: 62 Resp: 4174
 Ion Ratio Lower Upper
 62 100
 98 10.1 0.0 20.4

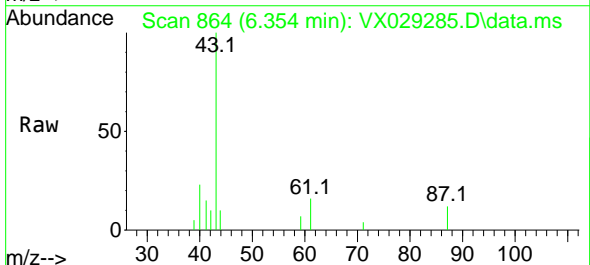
Manual Integrations

APPROVED

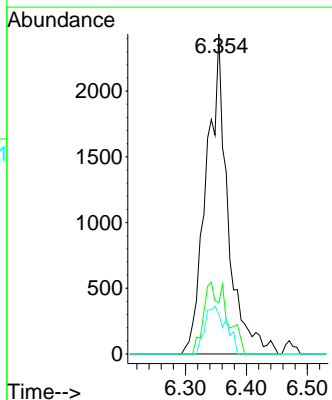
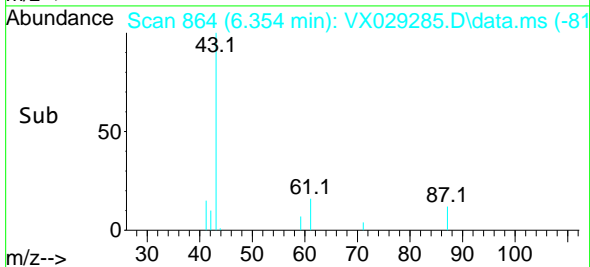
Reviewed By :John Carlone 06/08/2022
 Supervised By :Mahesh Dadoda 06/08/2022

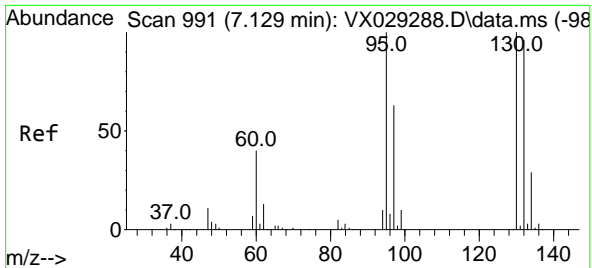


#43
 Isopropyl Acetate
 Concen: 0.895 ug/l
 RT: 6.354 min Scan# 864
 Delta R.T. 0.012 min
 Lab File: VX029285.D
 Acq: 07 Jun 2022 18:32



Tgt Ion: 43 Resp: 5968
 Ion Ratio Lower Upper
 43 100
 61 24.2 18.5 27.7
 87 14.6 13.0 19.6





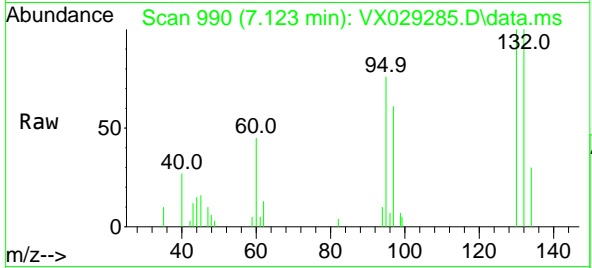
#44
 Trichloroethene
 Concen: 0.999 ug/l
 RT: 7.123 min Scan# 991
 Delta R.T. -0.006 min
 Lab File: VX029285.D
 Acq: 07 Jun 2022 18:32

Instrument :

MSVOA_X

Client SampleID :

VSTDIC001

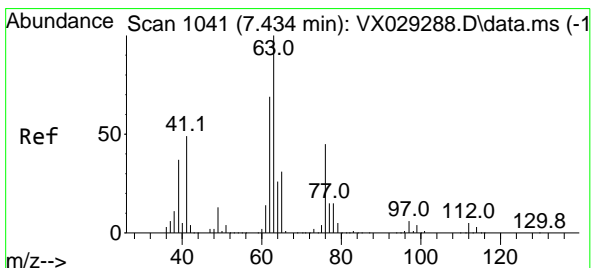
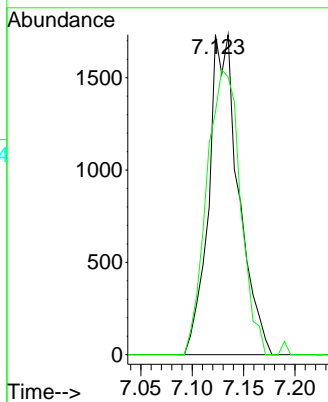
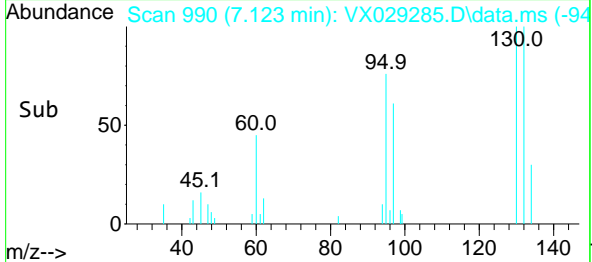


Tgt Ion: 130 Resp: 351
 Ion Ratio Lower Upper
 130 100
 95 75.9 0.0 188.8

Manual Integrations

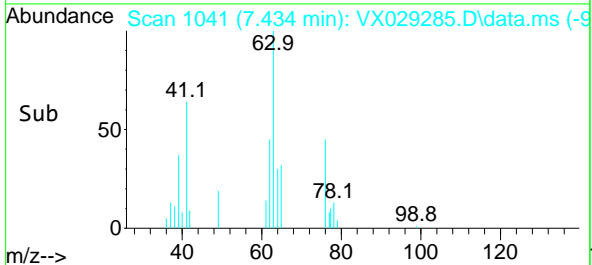
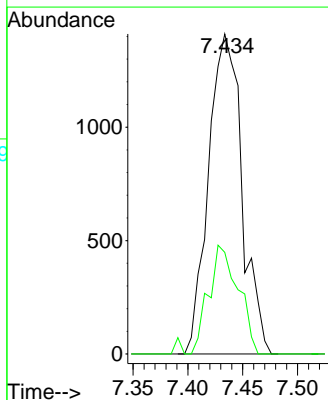
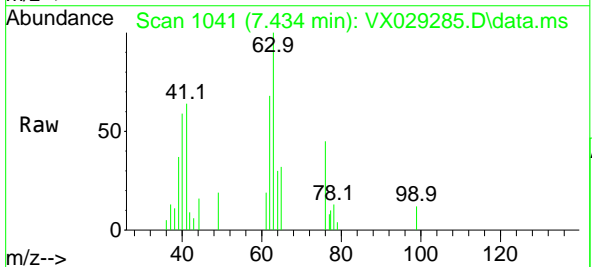
APPROVED

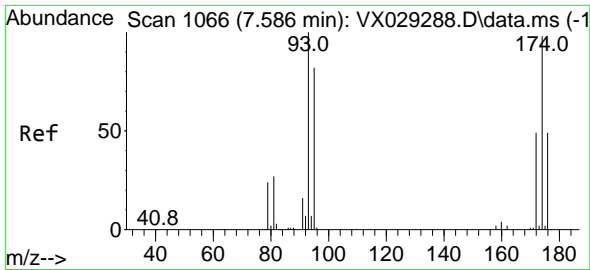
Reviewed By : John Carlone 06/08/2022
 Supervised By : Mahesh Dadoda 06/08/2022



#45
 1,2-Dichloropropane
 Concen: 0.942 ug/l
 RT: 7.434 min Scan# 1041
 Delta R.T. -0.000 min
 Lab File: VX029285.D
 Acq: 07 Jun 2022 18:32

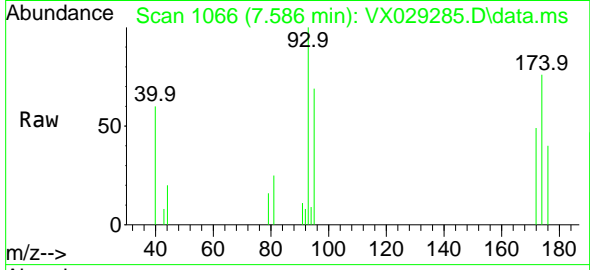
Tgt Ion: 63 Resp: 2990
 Ion Ratio Lower Upper
 63 100
 65 31.8 25.8 38.6





#46
 Dibromomethane
 Concen: 0.922 ug/l
 RT: 7.586 min Scan# 1066
 Delta R.T. -0.000 min
 Lab File: VX029285.D
 Acq: 07 Jun 2022 18:32

Instrument : MSVOA_X
 ClientSampleId : VSTDIC001

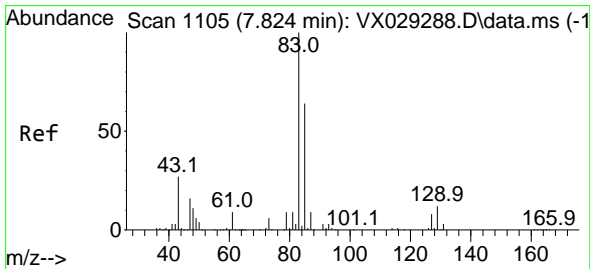
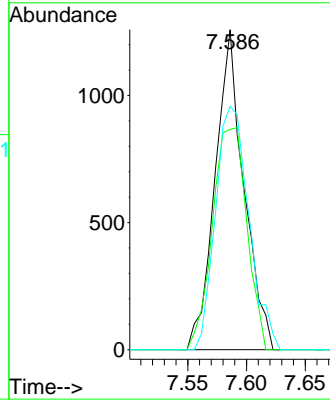
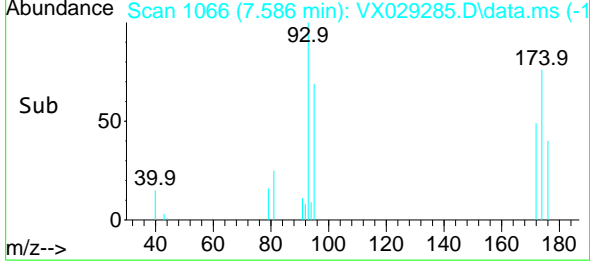


Tgt Ion: 93 Resp: 2138

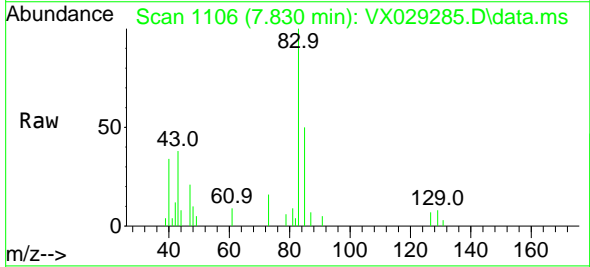
Ion	Ratio	Lower	Upper
93	100		
95	83.1	65.8	98.6
174	88.4	85.4	128.2

Manual Integrations
 APPROVED

Reviewed By :John Carlone 06/08/2022
 Supervised By :Mahesh Dadoda 06/08/2022

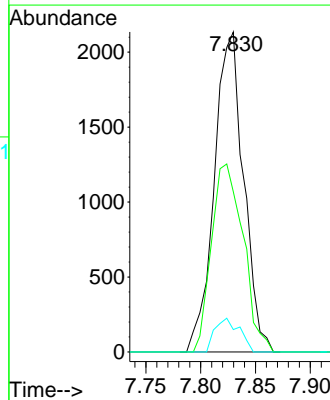
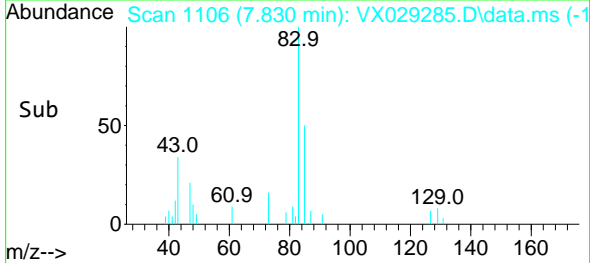


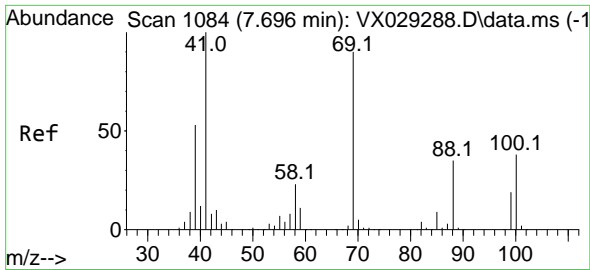
#47
 Bromodichloromethane
 Concen: 0.923 ug/l
 RT: 7.830 min Scan# 1106
 Delta R.T. 0.006 min
 Lab File: VX029285.D
 Acq: 07 Jun 2022 18:32



Tgt Ion: 83 Resp: 3976

Ion	Ratio	Lower	Upper
83	100		
85	50.1	52.2	78.2#
127	7.0	6.8	10.2





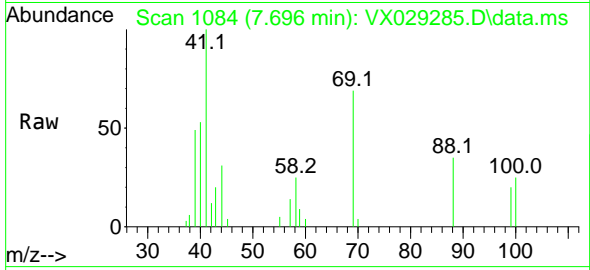
#48
 Methyl methacrylate
 Concen: 0.905 ug/l
 RT: 7.696 min Scan# 1084
 Delta R.T. -0.000 min
 Lab File: VX029285.D
 Acq: 07 Jun 2022 18:32

Instrument :

MSVOA_X

Client Sample Id :

VSTDIC001



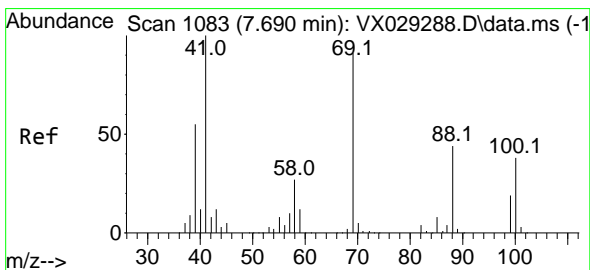
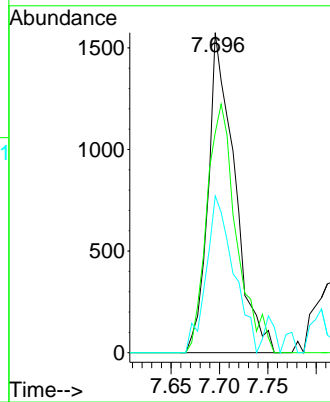
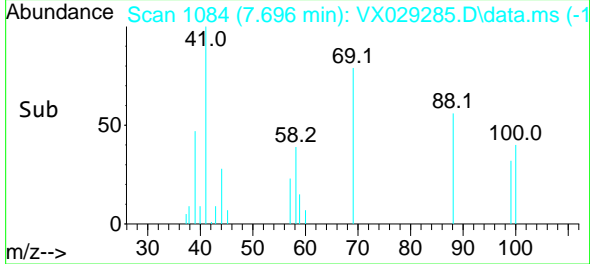
Tgt Ion: 41 Resp: 3010
 Ion Ratio Lower Upper
 41 100
 69 86.7 82.5 123.7
 39 50.8 43.8 65.8

Manual Integrations

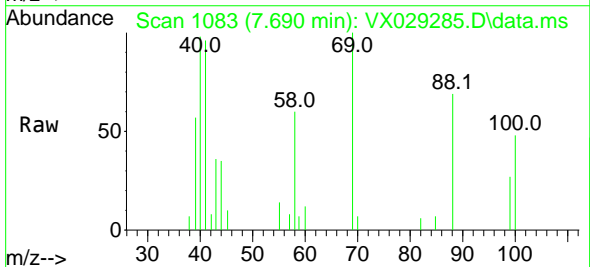
APPROVED

Reviewed By :John Carlone 06/08/2022

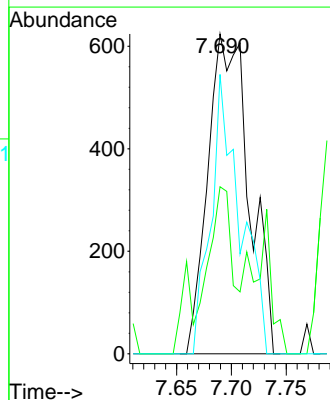
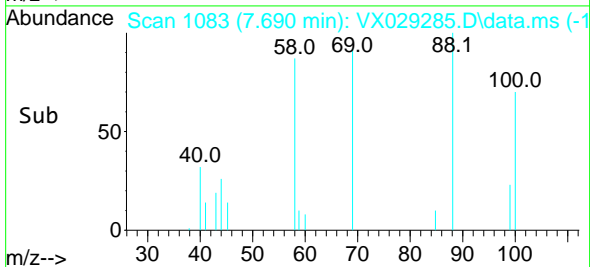
Supervised By :Mahesh Dadoda 06/08/2022

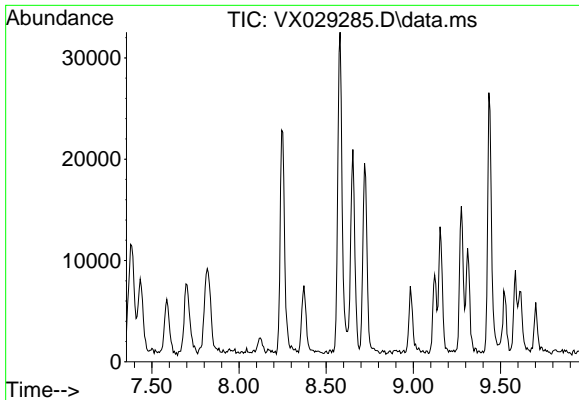


#49
 1,4-Dioxane
 Concen: 18.773 ug/l
 RT: 7.690 min Scan# 1083
 Delta R.T. -0.000 min
 Lab File: VX029285.D
 Acq: 07 Jun 2022 18:32



Tgt Ion: 88 Resp: 1629
 Ion Ratio Lower Upper
 88 100
 43 22.3 21.9 32.9
 58 62.4 53.7 80.5





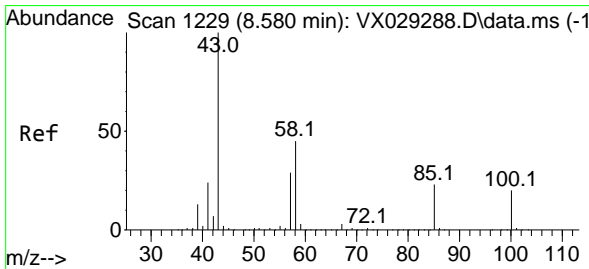
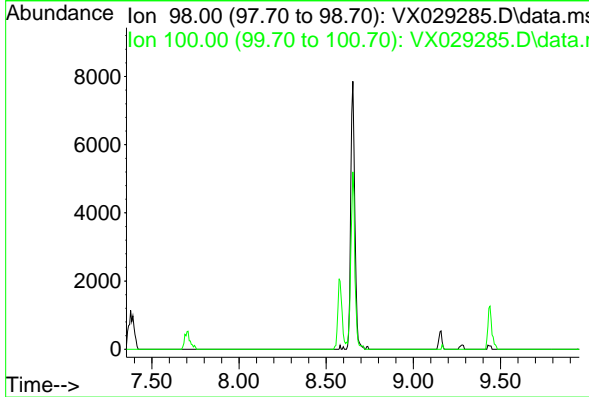
#50
 Toluene-d8
 Concen: 0.000 ug/l
 Expected RT: 8.65 min
 Lab File: VX029285.D
 Acq: 07 Jun 2022 18:32

Instrument :
 MSVOA_X
ClientSampleId :
 VSTDIC001

Tgt Ion: 98
 Sig Exp Ratio
 98 100
 100 65.7

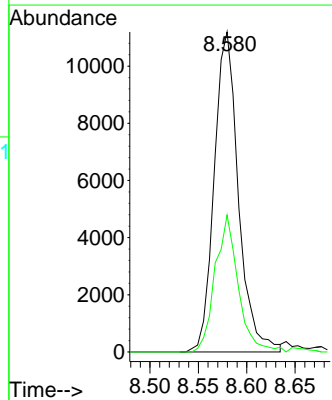
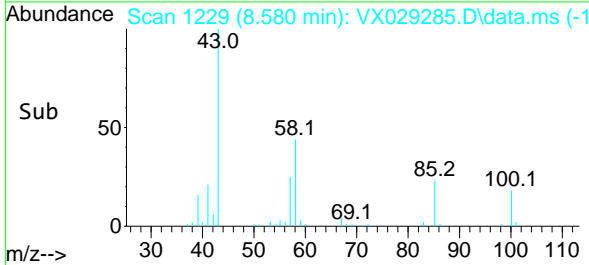
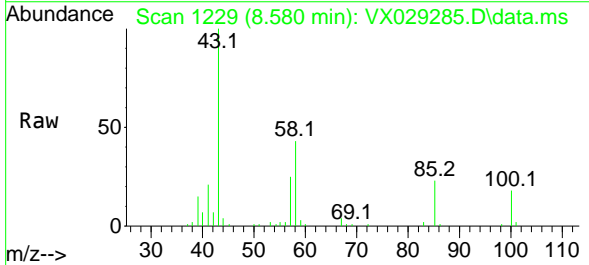
Manual Integrations
APPROVED

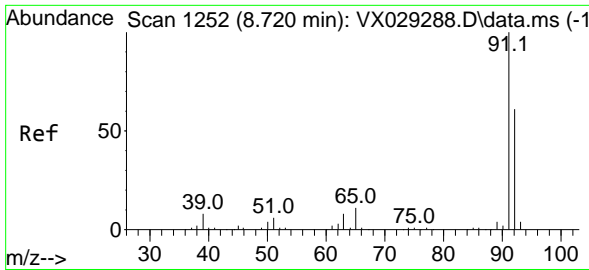
Reviewed By :John Carlone 06/08/2022
 Supervised By :Mahesh Dadoda 06/08/2022



#51
 4-Methyl-2-Pentanone
 Concen: 4.388 ug/l
 RT: 8.580 min Scan# 1229
 Delta R.T. -0.000 min
 Lab File: VX029285.D
 Acq: 07 Jun 2022 18:32

Tgt Ion: 43 Resp: 19480
 Ion Ratio Lower Upper
 43 100
 58 40.8 36.1 54.1





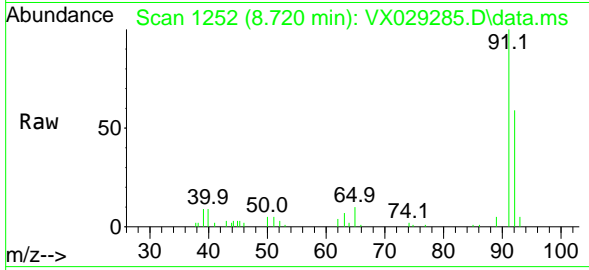
#52
 Toluene
 Concen: 0.895 ug/l
 RT: 8.720 min Scan# 1252
 Delta R.T. -0.000 min
 Lab File: VX029285.D
 Acq: 07 Jun 2022 18:32

Instrument :

MSVOA_X

ClientSampleId :

VSTDIC001



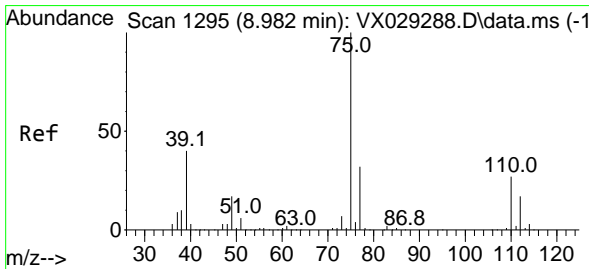
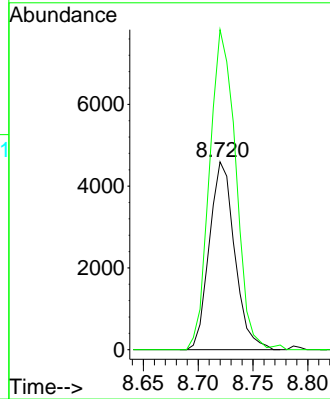
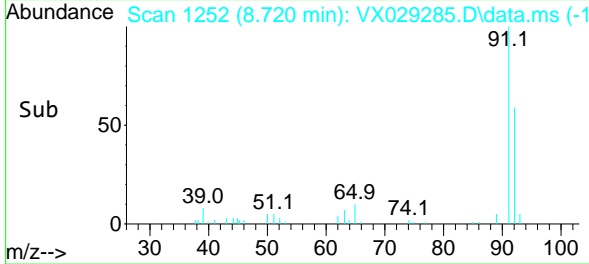
Tgt Ion: 92 Resp: 7389
 Ion Ratio Lower Upper
 92 100
 91 176.3 137.5 206.3

Manual Integrations

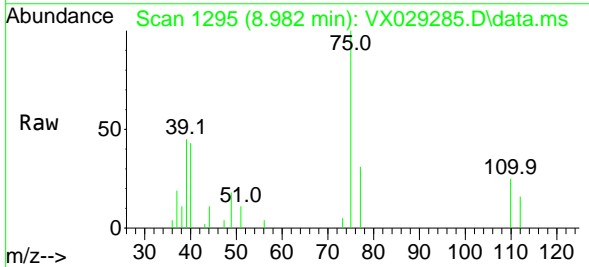
APPROVED

Reviewed By :John Carlone 06/08/2022

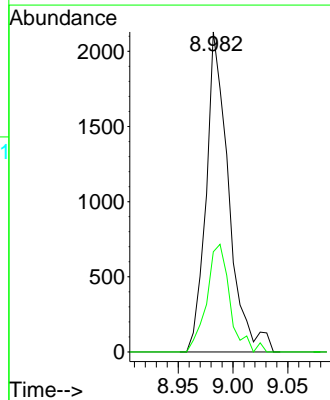
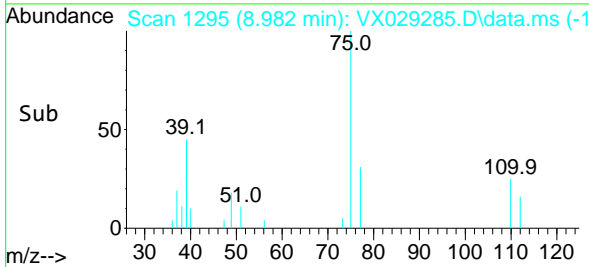
Supervised By :Mahesh Dadoda 06/08/2022

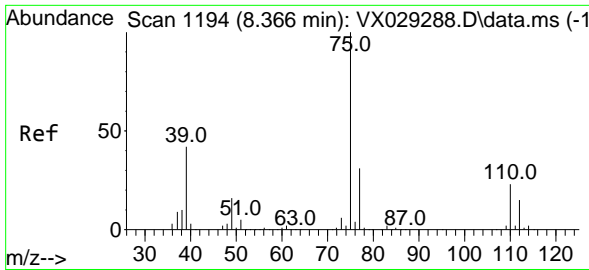


#53
 t-1,3-Dichloropropene
 Concen: 0.717 ug/l
 RT: 8.982 min Scan# 1295
 Delta R.T. -0.000 min
 Lab File: VX029285.D
 Acq: 07 Jun 2022 18:32



Tgt Ion: 75 Resp: 3042
 Ion Ratio Lower Upper
 75 100
 77 31.3 25.4 38.0





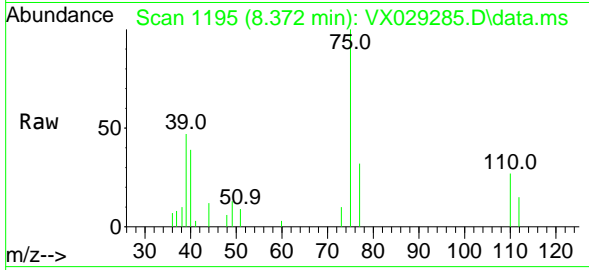
#54
 cis-1,3-Dichloropropene
 Concen: 0.839 ug/l
 RT: 8.372 min Scan# 1195
 Delta R.T. 0.006 min
 Lab File: VX029285.D
 Acq: 07 Jun 2022 18:32

Instrument :

MSVOA_X

ClientSampleId :

VSTDIC001



Tgt Ion: 75 Resp: 404

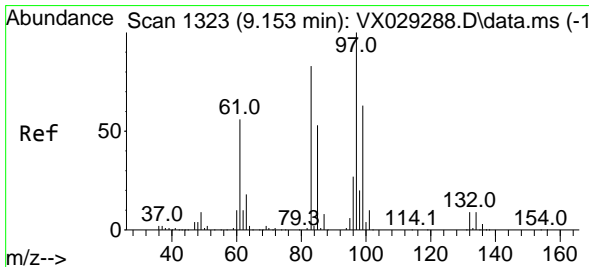
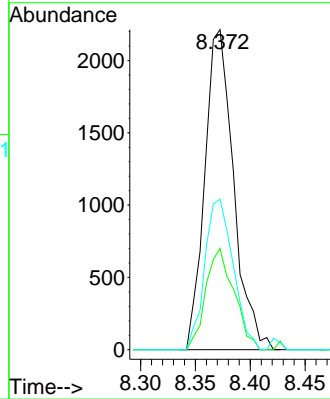
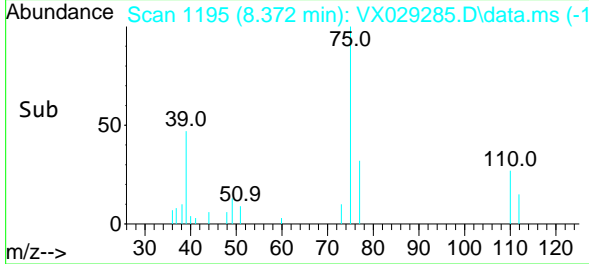
Ion	Ratio	Lower	Upper
75	100		
77	31.6	24.8	37.2
39	47.0	29.6	44.4

Manual Integrations

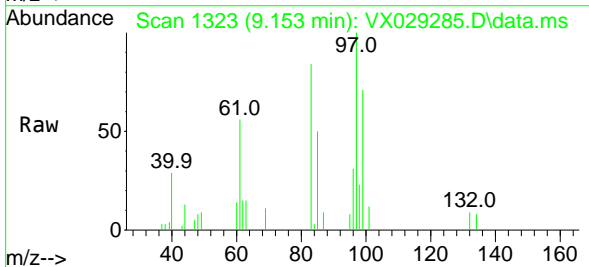
APPROVED

Reviewed By :John Carlone 06/08/2022

Supervised By :Mahesh Dadoda 06/08/2022

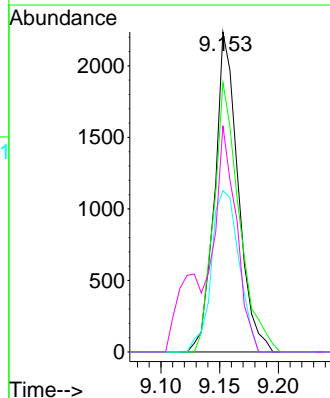
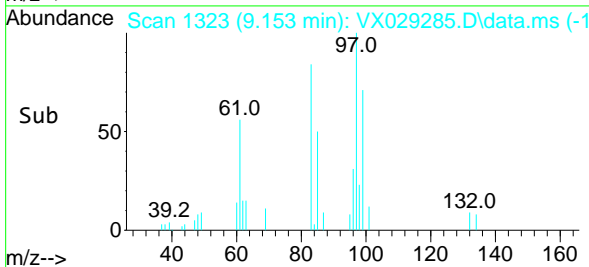


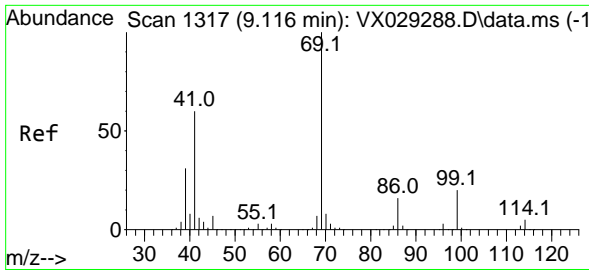
#55
 1,1,2-Trichloroethane
 Concen: 0.926 ug/l
 RT: 9.153 min Scan# 1323
 Delta R.T. -0.000 min
 Lab File: VX029285.D
 Acq: 07 Jun 2022 18:32



Tgt Ion: 97 Resp: 3123

Ion	Ratio	Lower	Upper
97	100		
83	84.2	66.2	99.4
85	50.5	42.9	64.3
99	70.7	49.0	73.6





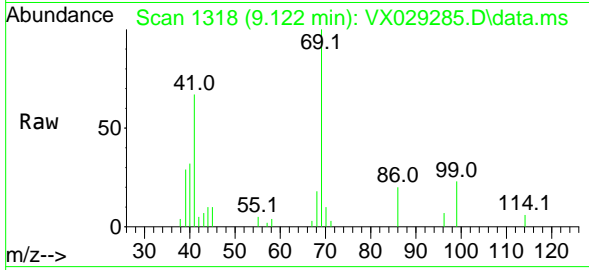
#56
 Ethyl methacrylate
 Concen: 0.757 ug/l
 RT: 9.122 min Scan# 1318
 Delta R.T. 0.006 min
 Lab File: VX029285.D
 Acq: 07 Jun 2022 18:32

Instrument :

MSVOA_X

ClientSampleId :

VSTDIC001



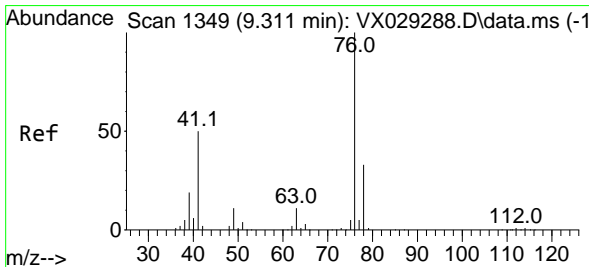
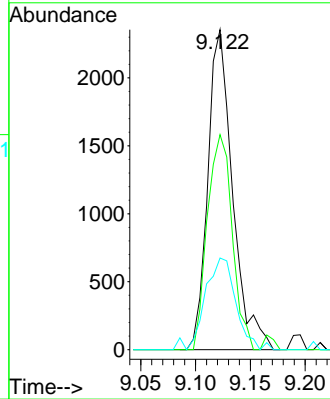
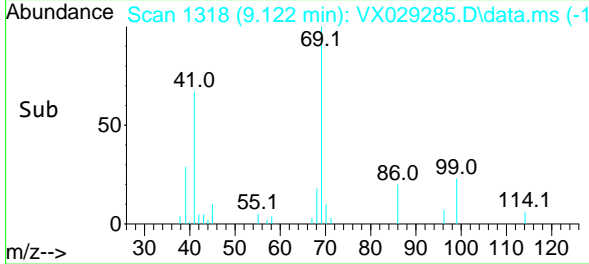
Tgt Ion: 69 Resp: 3699
 Ion Ratio Lower Upper
 69 100
 41 67.3 43.8 65.6
 39 35.6 22.2 33.2

Manual Integrations

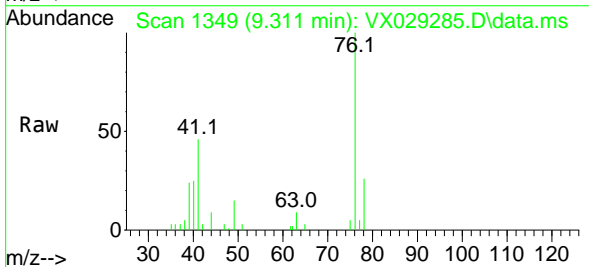
APPROVED

Reviewed By :John Carlone 06/08/2022

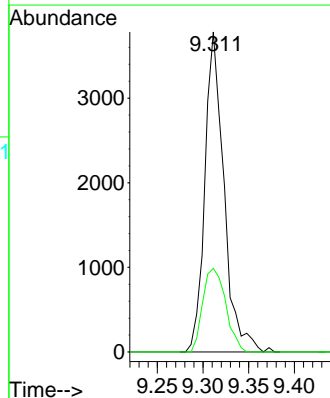
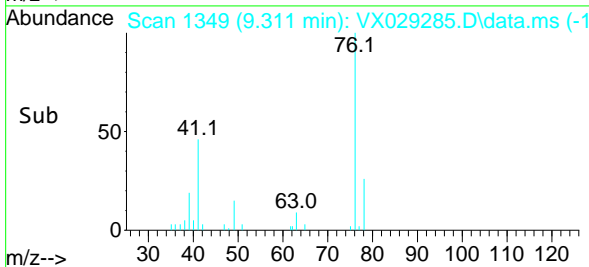
Supervised By :Mahesh Dadoda 06/08/2022

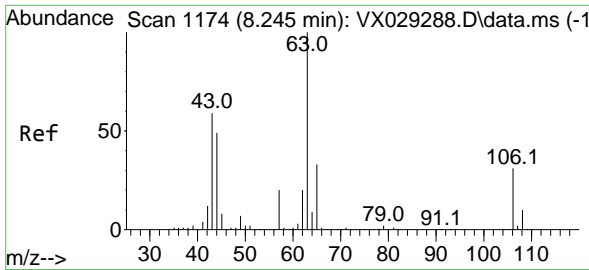


#57
 1,3-Dichloropropane
 Concen: 0.971 ug/l
 RT: 9.311 min Scan# 1349
 Delta R.T. -0.000 min
 Lab File: VX029285.D
 Acq: 07 Jun 2022 18:32



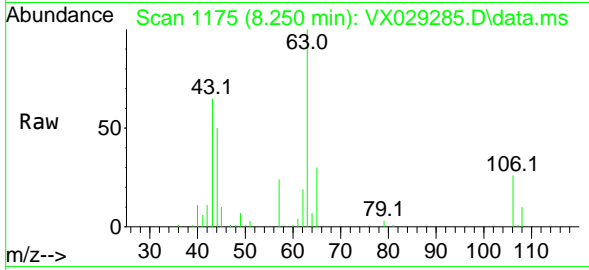
Tgt Ion: 76 Resp: 5487
 Ion Ratio Lower Upper
 76 100
 78 31.3 25.8 38.8





#58
 2-Chloroethyl Vinyl ether
 Concen: 4.325 ug/l
 RT: 8.250 min Scan# 1175
 Delta R.T. 0.006 min
 Lab File: VX029285.D
 Acq: 07 Jun 2022 18:32

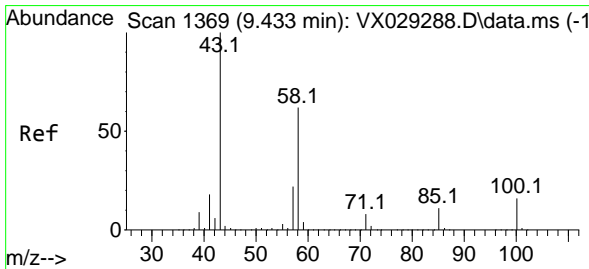
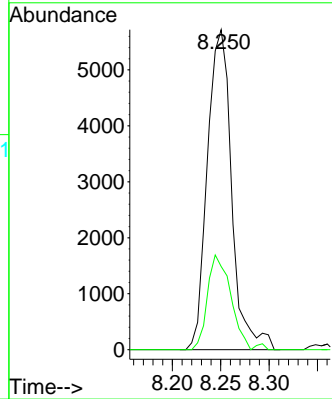
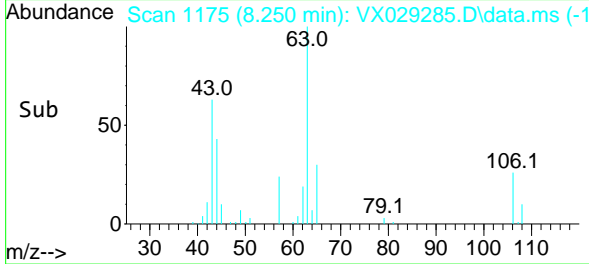
Instrument : MSVOA_X
 Client Sample Id : VSTDIC001



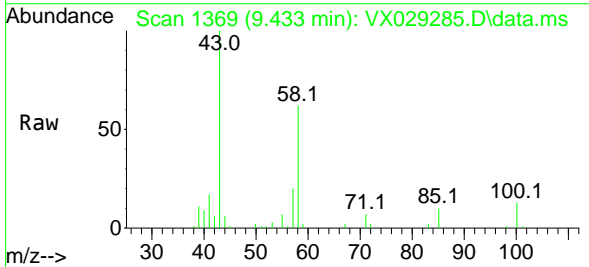
Tgt Ion: 63 Resp: 1000
 Ion Ratio Lower Upper
 63 100
 106 28.8 23.9 35.9

Manual Integrations
APPROVED

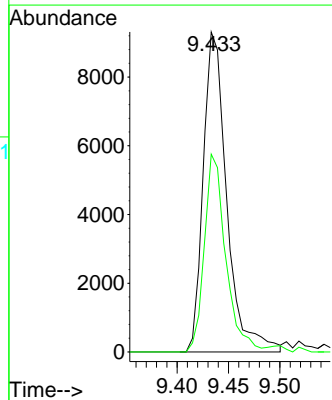
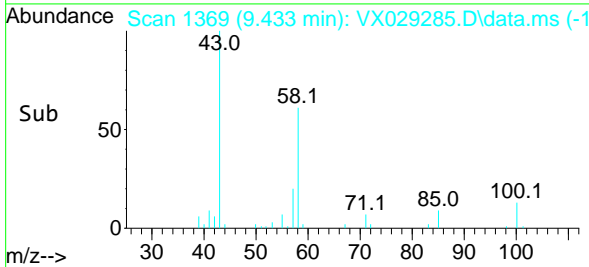
Reviewed By : John Carlone 06/08/2022
 Supervised By : Mahesh Dadoda 06/08/2022

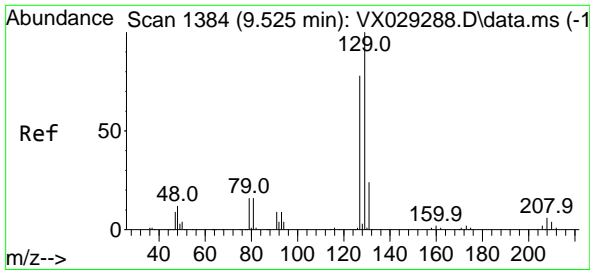


#59
 2-Hexanone
 Concen: 4.440 ug/l
 RT: 9.433 min Scan# 1369
 Delta R.T. -0.000 min
 Lab File: VX029285.D
 Acq: 07 Jun 2022 18:32



Tgt Ion: 43 Resp: 14840
 Ion Ratio Lower Upper
 43 100
 58 56.1 31.9 95.7





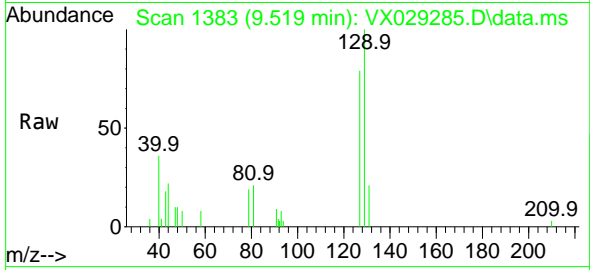
#60
 Dibromochloromethane
 Concen: 0.854 ug/l
 RT: 9.519 min Scan# 1383
 Delta R.T. -0.006 min
 Lab File: VX029285.D
 Acq: 07 Jun 2022 18:32

Instrument :

MSVOA_X

Client Sample Id :

VSTDIC001



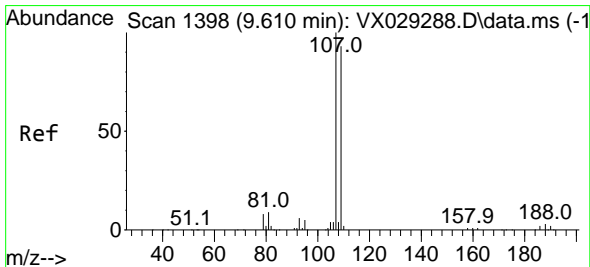
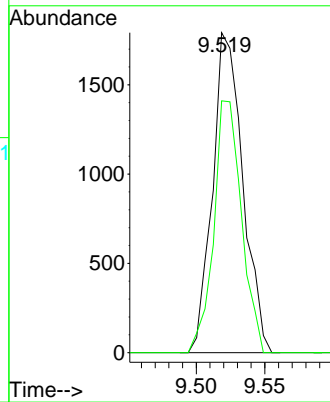
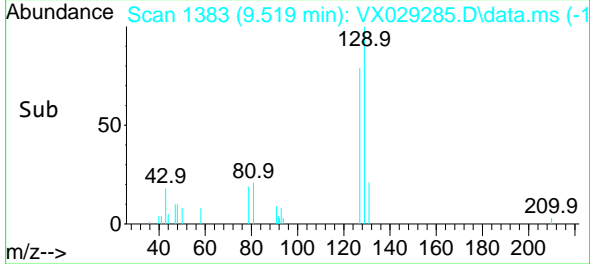
Tgt Ion:129 Resp: 275
 Ion Ratio Lower Upper
 129 100
 127 71.9 40.3 120.8

Manual Integrations

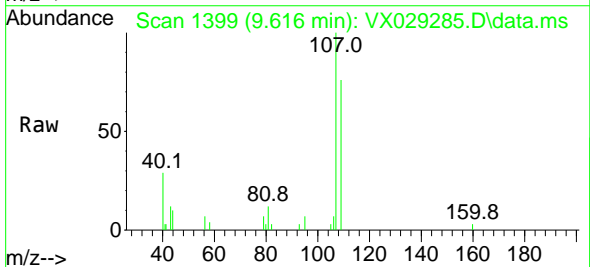
APPROVED

Reviewed By :John Carlone 06/08/2022

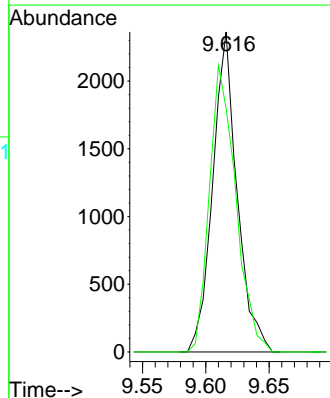
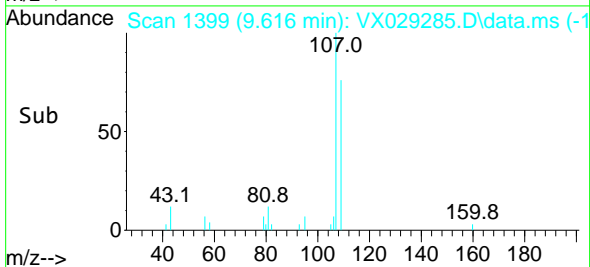
Supervised By :Mahesh Dadoda 06/08/2022

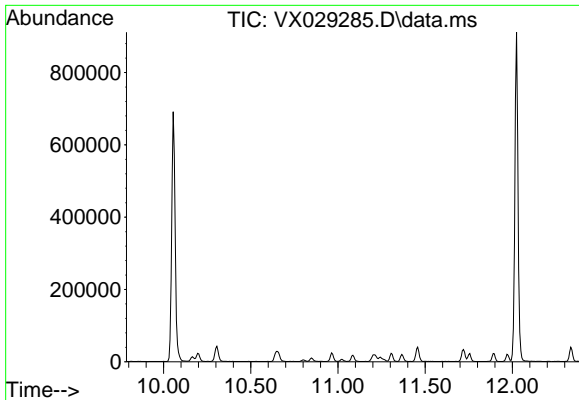


#61
 1,2-Dibromoethane
 Concen: 0.891 ug/l
 RT: 9.616 min Scan# 1399
 Delta R.T. 0.006 min
 Lab File: VX029285.D
 Acq: 07 Jun 2022 18:32



Tgt Ion:107 Resp: 3166
 Ion Ratio Lower Upper
 107 100
 109 97.1 74.4 111.6





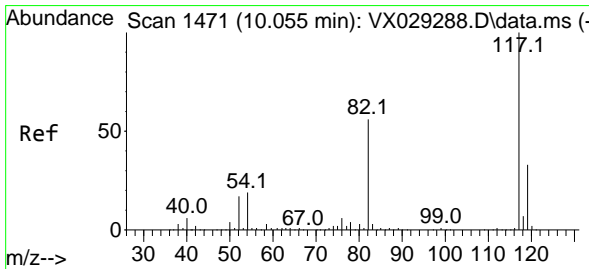
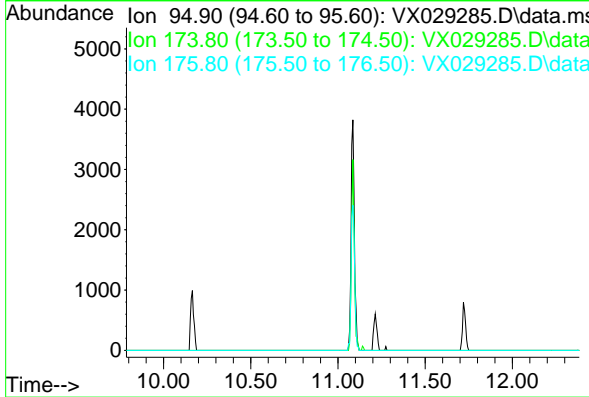
#62
 4-Bromofluorobenzene
 Concen: 0.000 ug/l
 Expected RT: 11.09 min
 Lab File: VX029285.D
 Acq: 07 Jun 2022 18:32

Instrument :
 MSVOA_X
ClientSampleId :
 VSTDIC001

Tgt Ion: 95
 Sig Exp Ratio
 95 100
 174 81.5
 176 77.5

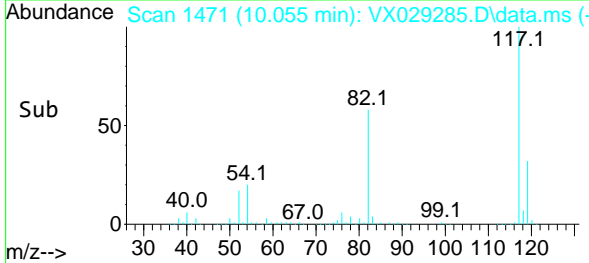
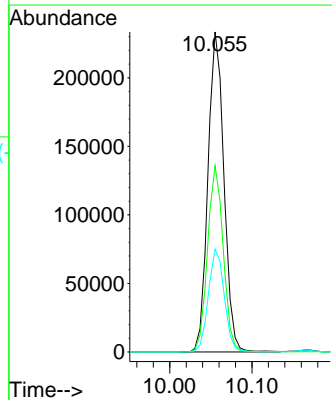
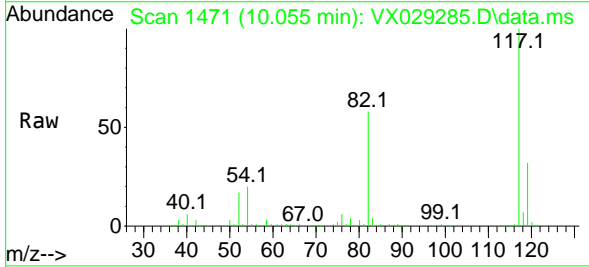
Manual Integrations
APPROVED

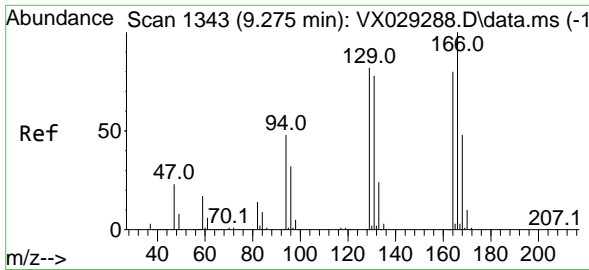
Reviewed By :John Carlone 06/08/2022
 Supervised By :Mahesh Dadoda 06/08/2022



#63
 Chlorobenzene-d5
 Concen: 50.000 ug/l
 RT: 10.055 min Scan# 1471
 Delta R.T. -0.000 min
 Lab File: VX029285.D
 Acq: 07 Jun 2022 18:32

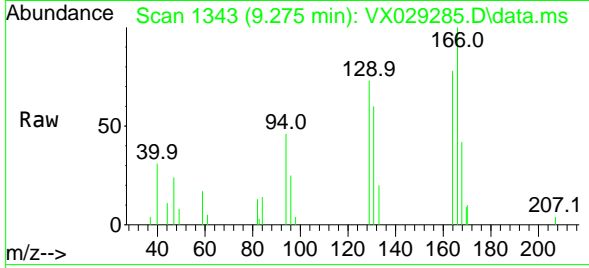
Tgt Ion:117 Resp: 315366
 Ion Ratio Lower Upper
 117 100
 82 58.2 41.8 62.8
 119 32.2 24.8 37.2





#64
 Tetrachloroethene
 Concen: 0.958 ug/l
 RT: 9.275 min Scan# 11
 Delta R.T. -0.000 min
 Lab File: VX029285.D
 Acq: 07 Jun 2022 18:32

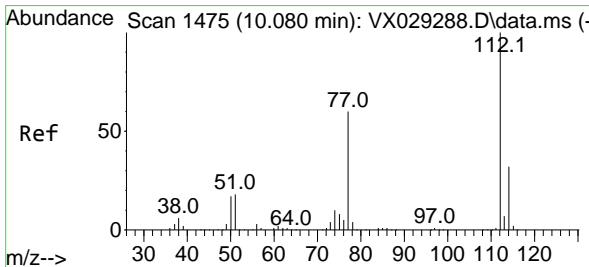
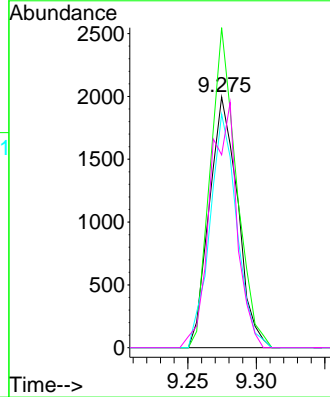
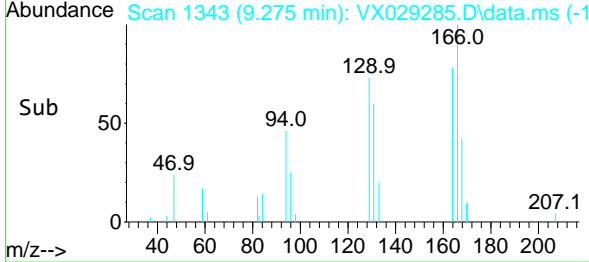
Instrument : MSVOA_X
 ClientSampleId : VSTDIC001



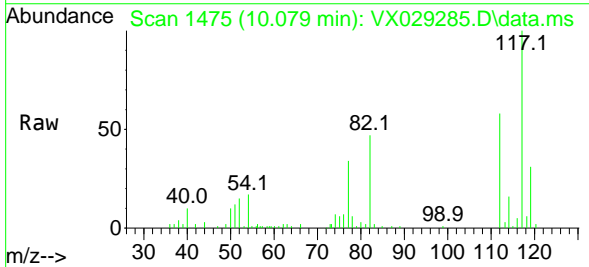
Tgt Ion:164 Resp: 2870
 Ion Ratio Lower Upper
 164 100
 166 127.6 101.2 151.8
 129 93.2 73.0 109.4
 131 76.9 74.2 111.2

Manual Integrations
APPROVED

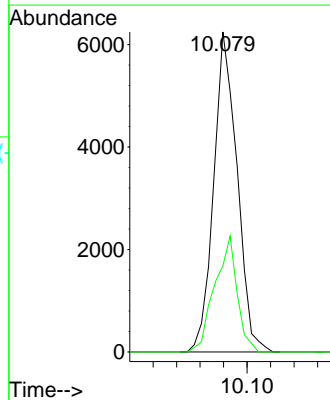
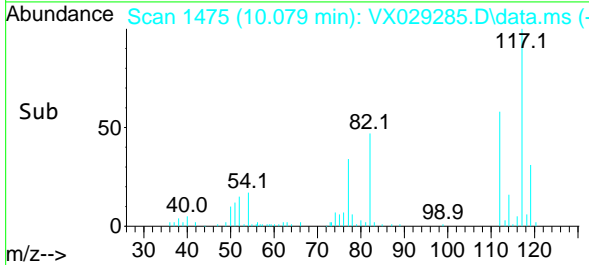
Reviewed By :John Carlone 06/08/2022
 Supervised By :Mahesh Dadoda 06/08/2022

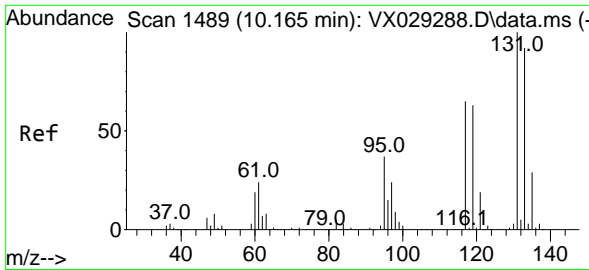


#65
 Chlorobenzene
 Concen: 0.989 ug/l
 RT: 10.079 min Scan# 1475
 Delta R.T. -0.000 min
 Lab File: VX029285.D
 Acq: 07 Jun 2022 18:32



Tgt Ion:112 Resp: 8621
 Ion Ratio Lower Upper
 112 100
 114 26.9 25.8 38.8





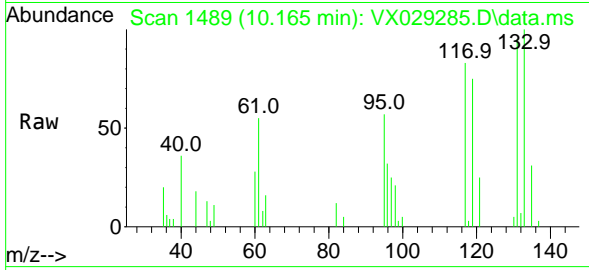
#66
 1,1,1,2-Tetrachloroethane
 Concen: 0.809 ug/l
 RT: 10.165 min Scan# 1489
 Delta R.T. -0.000 min
 Lab File: VX029285.D
 Acq: 07 Jun 2022 18:32

Instrument :

MSVOA_X

ClientSampleId :

VSTDIC001



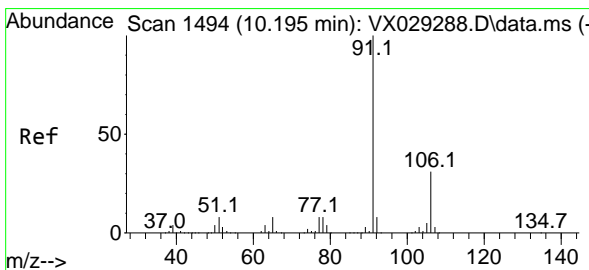
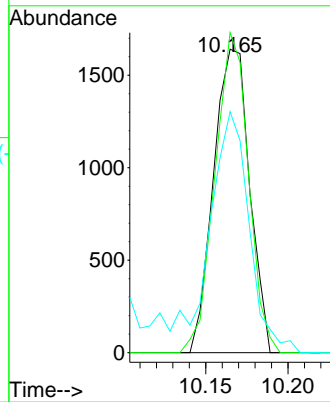
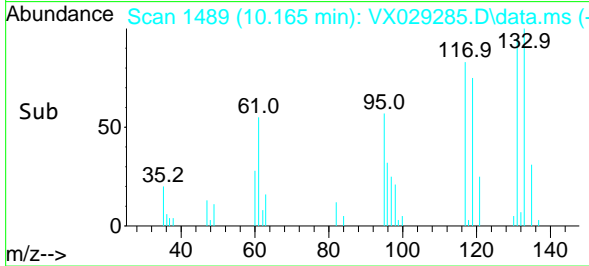
Tgt Ion:131 Resp: 2500
 Ion Ratio Lower Upper
 131 100
 133 98.1 48.3 144.8
 119 0.0 32.6 98.0

Manual Integrations

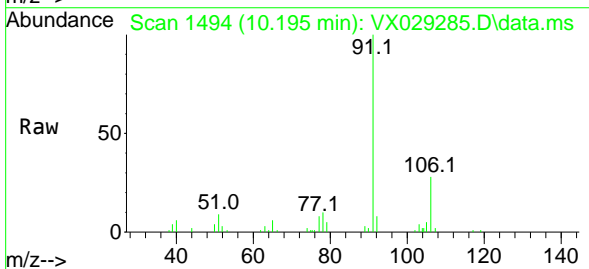
APPROVED

Reviewed By :John Carlone 06/08/2022

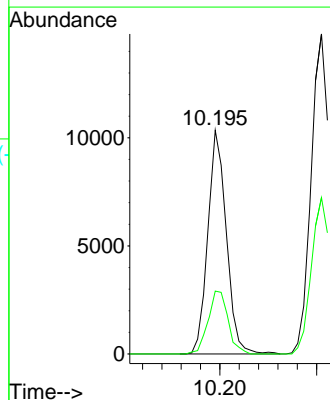
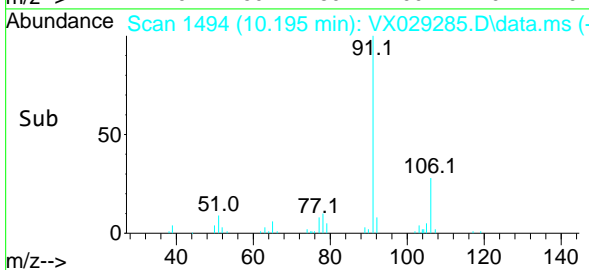
Supervised By :Mahesh Dadoda 06/08/2022

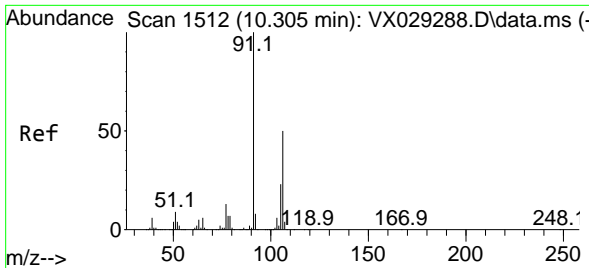


#67
 Ethyl Benzene
 Concen: 0.894 ug/l
 RT: 10.195 min Scan# 1494
 Delta R.T. -0.000 min
 Lab File: VX029285.D
 Acq: 07 Jun 2022 18:32



Tgt Ion: 91 Resp: 13809
 Ion Ratio Lower Upper
 91 100
 106 28.1 24.6 36.8





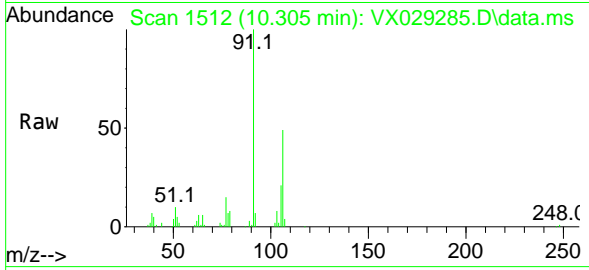
#68
 m/p-Xylenes
 Concen: 1.699 ug/l
 RT: 10.305 min Scan# 1512
 Delta R.T. -0.000 min
 Lab File: VX029285.D
 Acq: 07 Jun 2022 18:32

Instrument :

MSVOA_X

ClientSampleId :

VSTDIC001



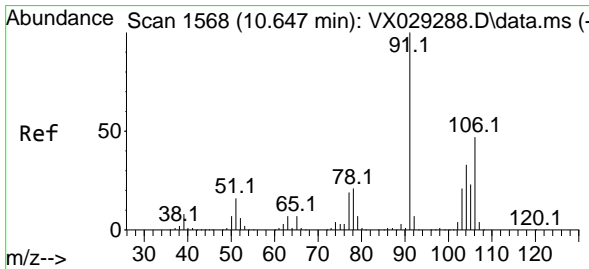
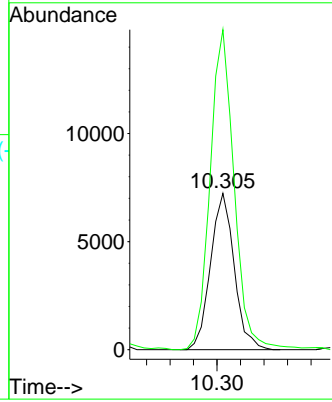
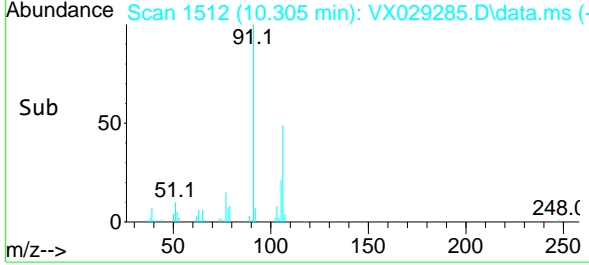
Tgt Ion:106 Resp: 1013
 Ion Ratio Lower Upper
 106 100
 91 208.6 160.4 240.6

Manual Integrations

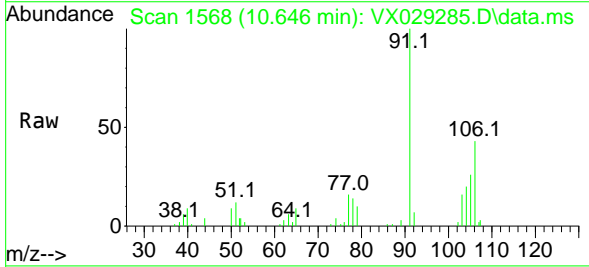
APPROVED

Reviewed By :John Carlone 06/08/2022

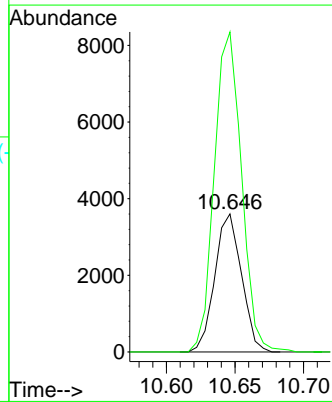
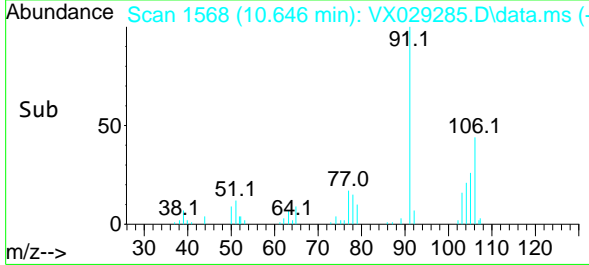
Supervised By :Mahesh Dadoda 06/08/2022

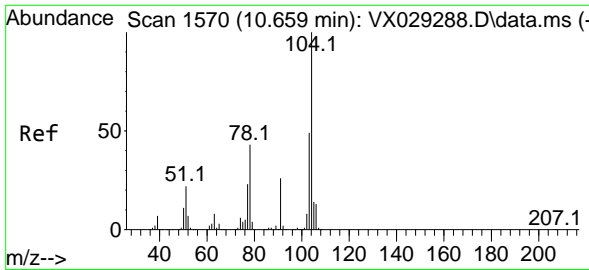


#69
 o-Xylene
 Concen: 0.835 ug/l
 RT: 10.646 min Scan# 1568
 Delta R.T. -0.000 min
 Lab File: VX029285.D
 Acq: 07 Jun 2022 18:32



Tgt Ion:106 Resp: 4882
 Ion Ratio Lower Upper
 106 100
 91 236.2 106.1 318.1





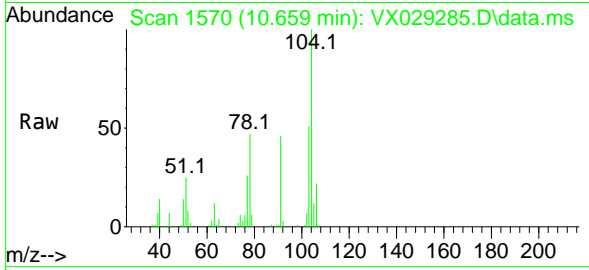
#70
 Styrene
 Concen: 0.835 ug/l
 RT: 10.659 min Scan# 1570
 Delta R.T. -0.000 min
 Lab File: VX029285.D
 Acq: 07 Jun 2022 18:32

Instrument :

MSVOA_X

Client Sample Id :

VSTDIC001



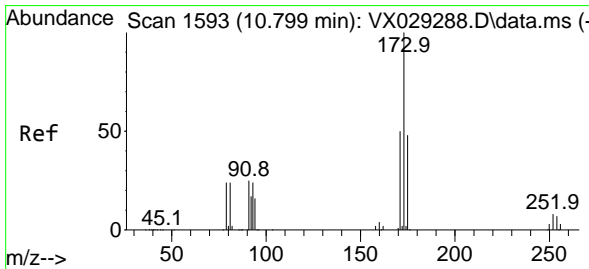
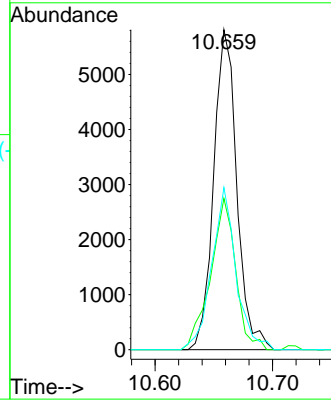
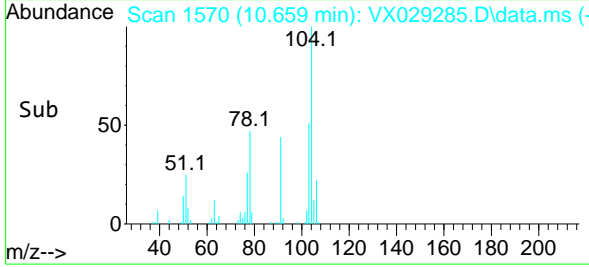
Tgt Ion: 104 Resp: 7958
 Ion Ratio Lower Upper
 104 100
 78 51.3 38.6 57.8
 103 53.2 43.8 65.8

Manual Integrations

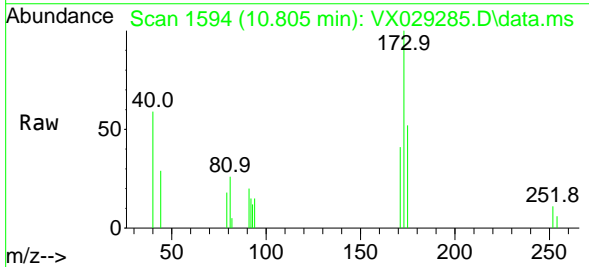
APPROVED

Reviewed By : John Carlone 06/08/2022

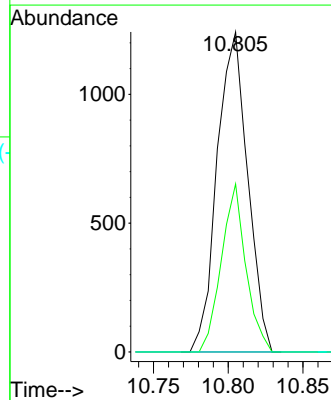
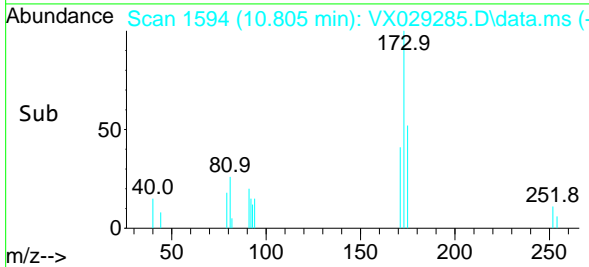
Supervised By : Mahesh Dadoda 06/08/2022

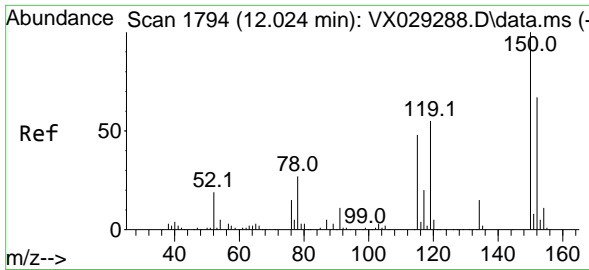


#71
 Bromoform
 Concen: 0.807 ug/l
 RT: 10.805 min Scan# 1594
 Delta R.T. 0.006 min
 Lab File: VX029285.D
 Acq: 07 Jun 2022 18:32



Tgt Ion: 173 Resp: 1761
 Ion Ratio Lower Upper
 173 100
 175 42.2 24.1 72.2
 254 0.0 0.1 0.1#





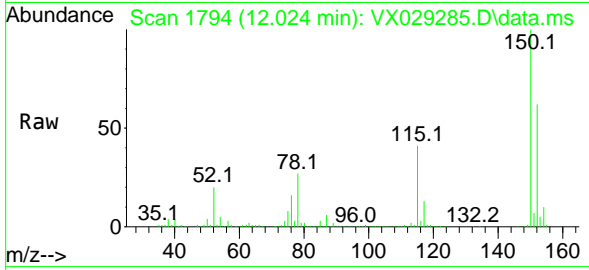
#72
 1,4-Dichlorobenzene-d4
 Concen: 50.000 ug/l
 RT: 12.024 min Scan# 1794
 Delta R.T. -0.000 min
 Lab File: VX029285.D
 Acq: 07 Jun 2022 18:32

Instrument :

MSVOA_X

ClientSampleId :

VSTDIC001



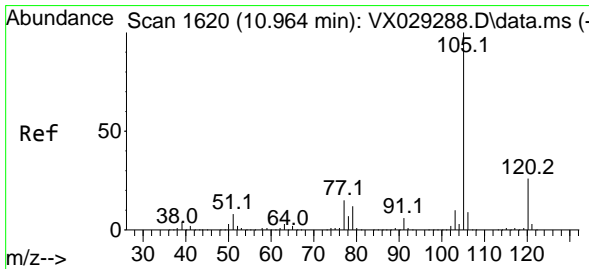
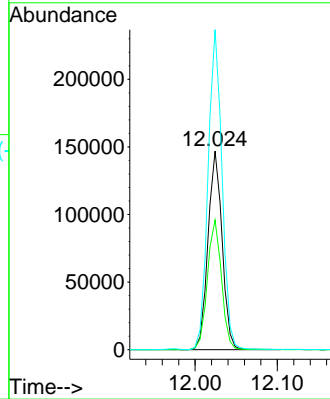
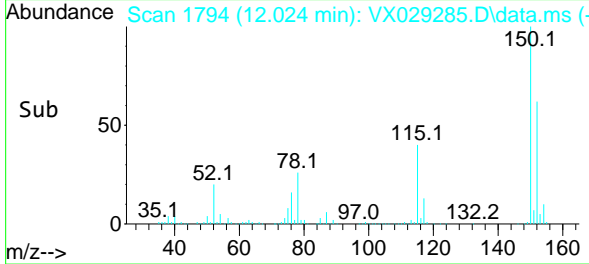
Tgt Ion:152 Resp: 175239
 Ion Ratio Lower Upper
 152 100
 115 65.1 37.5 112.7
 150 158.8 0.0 338.2

Manual Integrations

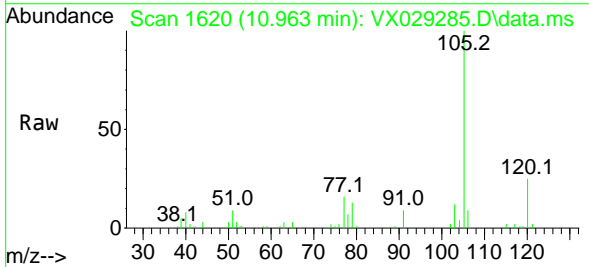
APPROVED

Reviewed By :John Carlone 06/08/2022

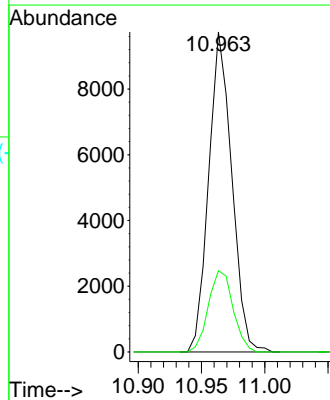
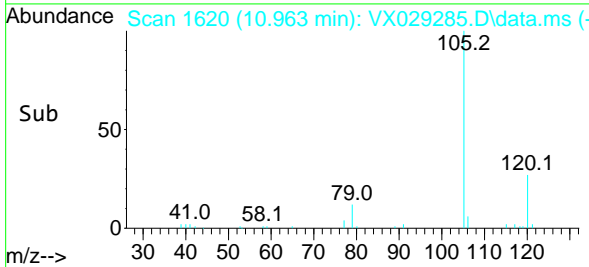
Supervised By :Mahesh Dadoda 06/08/2022

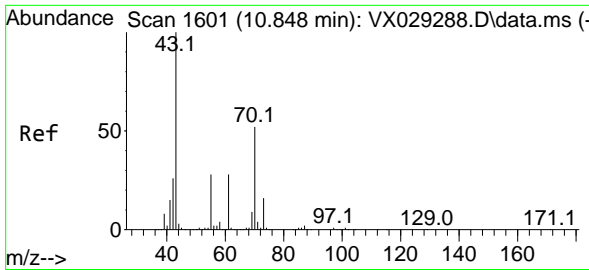


#73
 Isopropylbenzene
 Concen: 0.888 ug/l
 RT: 10.963 min Scan# 1620
 Delta R.T. -0.000 min
 Lab File: VX029285.D
 Acq: 07 Jun 2022 18:32



Tgt Ion:105 Resp: 12355
 Ion Ratio Lower Upper
 105 100
 120 27.1 13.5 40.5





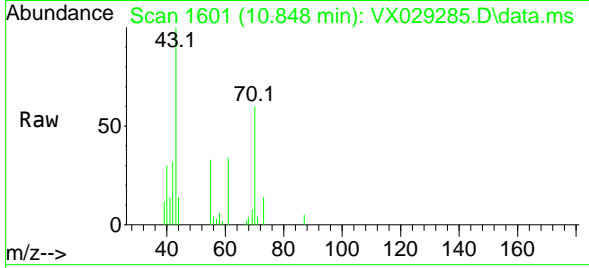
#74
 N-amy1 acetate
 Concen: 0.824 ug/l
 RT: 10.848 min Scan# 1601
 Delta R.T. -0.000 min
 Lab File: VX029285.D
 Acq: 07 Jun 2022 18:32

Instrument :

MSVOA_X

ClientSampleId :

VSTDIC001



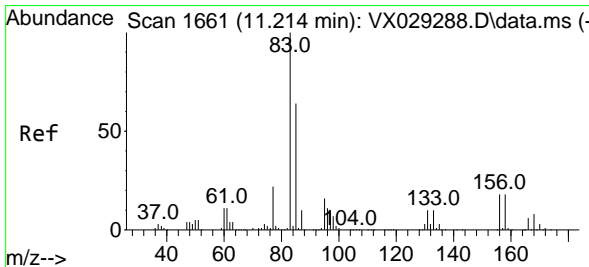
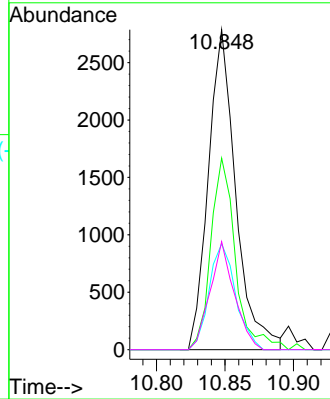
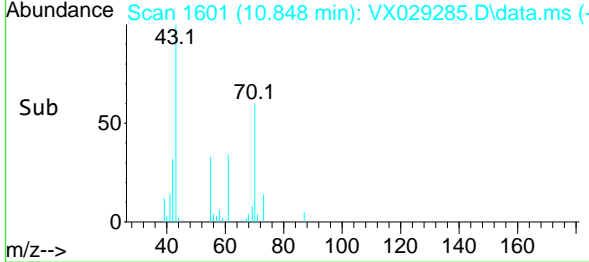
Tgt Ion: 43 Resp: 388
 Ion Ratio Lower Upper
 43 100
 70 54.2 42.5 63.7
 55 31.9 23.1 34.7
 61 29.9 22.8 34.2

Manual Integrations

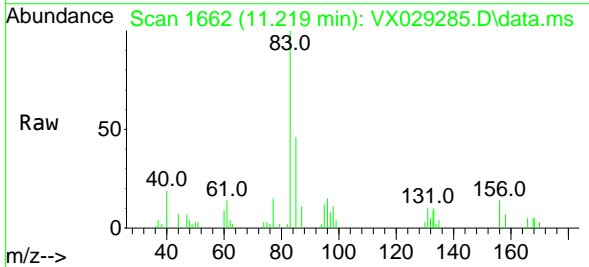
APPROVED

Reviewed By :John Carlone 06/08/2022

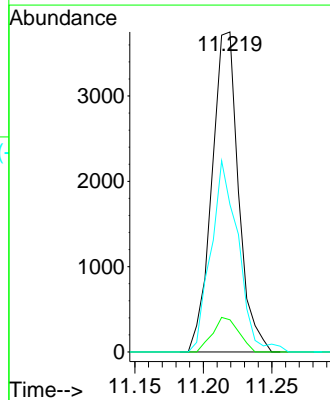
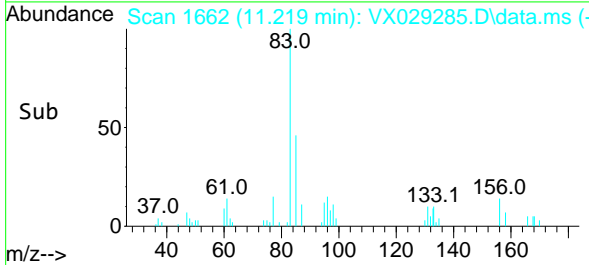
Supervised By :Mahesh Dadoda 06/08/2022

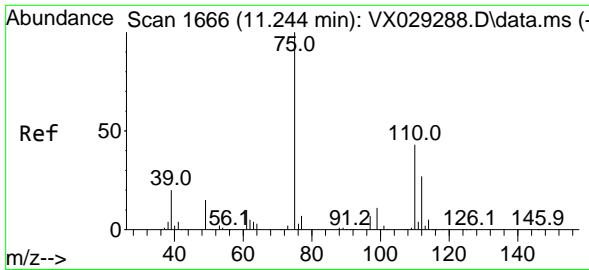


#75
 1,1,2,2-Tetrachloroethane
 Concen: 1.088 ug/l
 RT: 11.219 min Scan# 1662
 Delta R.T. 0.006 min
 Lab File: VX029285.D
 Acq: 07 Jun 2022 18:32



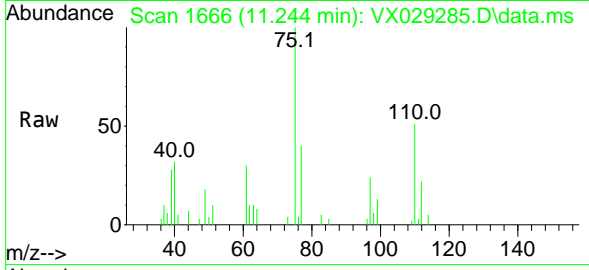
Tgt Ion: 83 Resp: 5074
 Ion Ratio Lower Upper
 83 100
 131 10.5 5.1 15.3
 85 61.2 32.6 97.7





#76
 1,2,3-Trichloropropane
 Concen: 1.053 ug/l m
 RT: 11.244 min Scan# 1666
 Delta R.T. -0.000 min
 Lab File: VX029285.D
 Acq: 07 Jun 2022 18:32

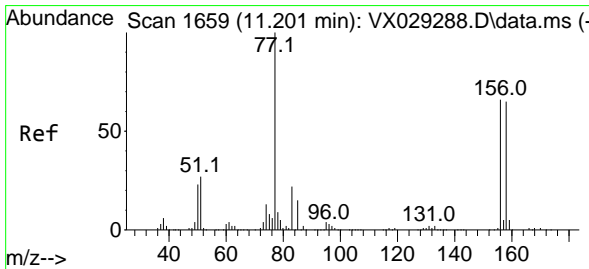
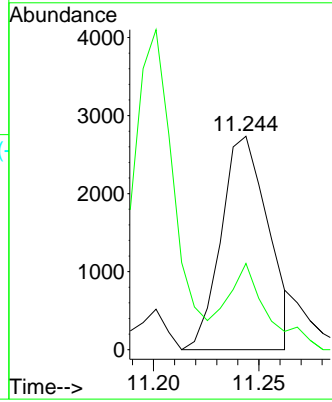
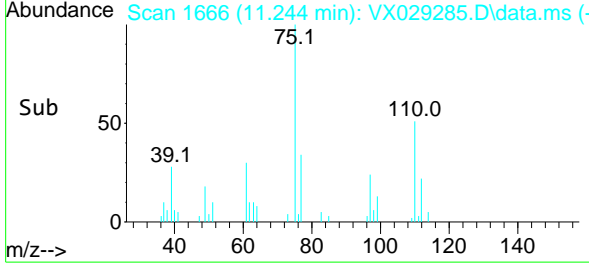
Instrument : MSVOA_X
 ClientSampleId : VSTDIC001



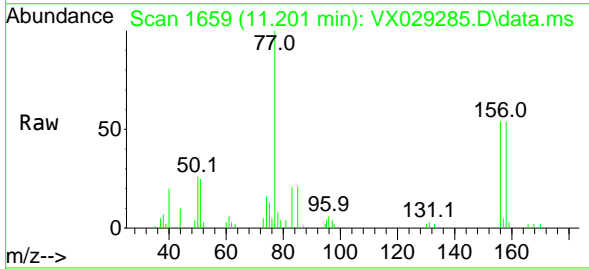
Tgt Ion: 75 Resp: 4258
 Ion Ratio Lower Upper
 75 100
 77 35.0 19.4 58.2

Manual Integrations
APPROVED

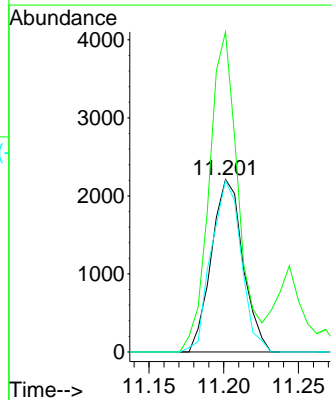
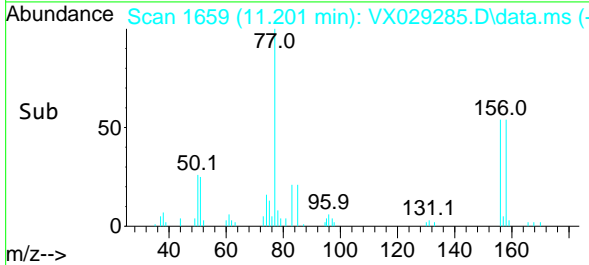
Reviewed By :John Carlone 06/08/2022
 Supervised By :Mahesh Dadoda 06/08/2022

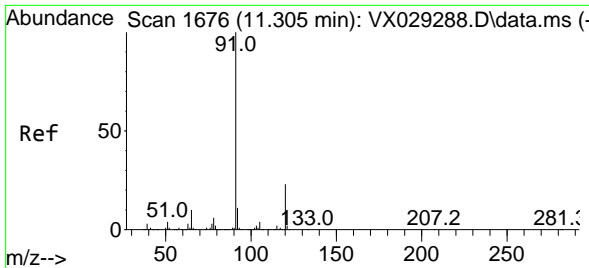


#77
 Bromobenzene
 Concen: 0.999 ug/l
 RT: 11.201 min Scan# 1659
 Delta R.T. -0.000 min
 Lab File: VX029285.D
 Acq: 07 Jun 2022 18:32



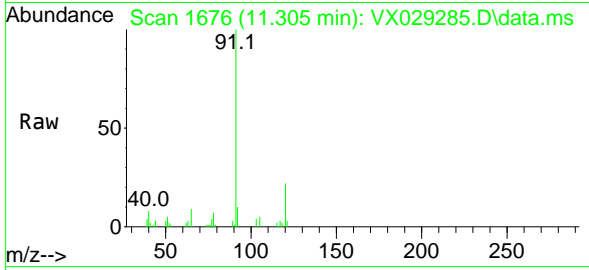
Tgt Ion:156 Resp: 3239
 Ion Ratio Lower Upper
 156 100
 77 170.1 78.5 235.3
 158 94.7 50.2 150.7





#78
 n-propylbenzene
 Concen: 0.885 ug/l
 RT: 11.305 min Scan# 1676
 Delta R.T. -0.000 min
 Lab File: VX029285.D
 Acq: 07 Jun 2022 18:32

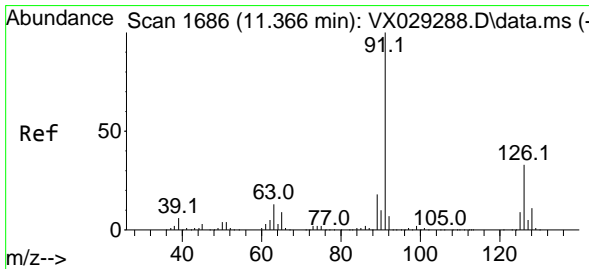
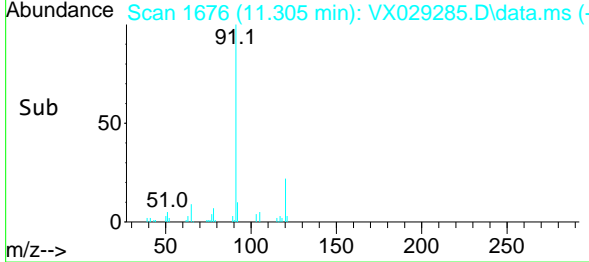
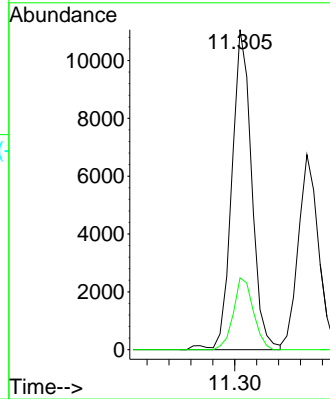
Instrument : MSVOA_X
 ClientSampleId : VSTDIC001



Tgt Ion: 91 Resp: 1386
 Ion Ratio Lower Upper
 91 100
 120 22.5 11.6 34.8

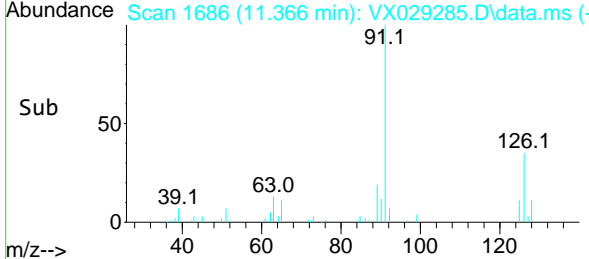
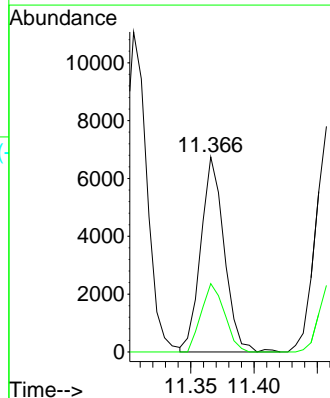
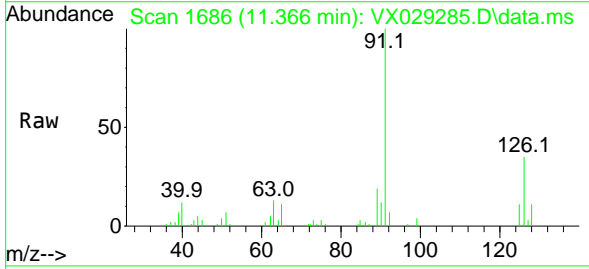
Manual Integrations
 APPROVED

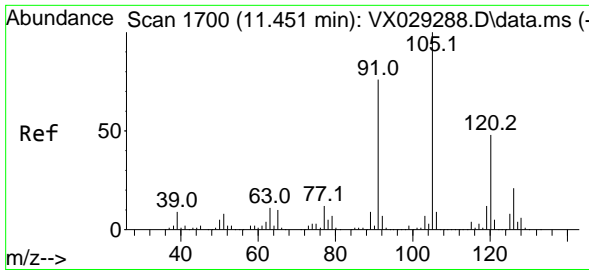
Reviewed By :John Carlone 06/08/2022
 Supervised By :Mahesh Dadoda 06/08/2022



#79
 2-Chlorotoluene
 Concen: 0.881 ug/l
 RT: 11.366 min Scan# 1686
 Delta R.T. -0.000 min
 Lab File: VX029285.D
 Acq: 07 Jun 2022 18:32

Tgt Ion: 91 Resp: 8717
 Ion Ratio Lower Upper
 91 100
 126 34.7 17.3 51.9





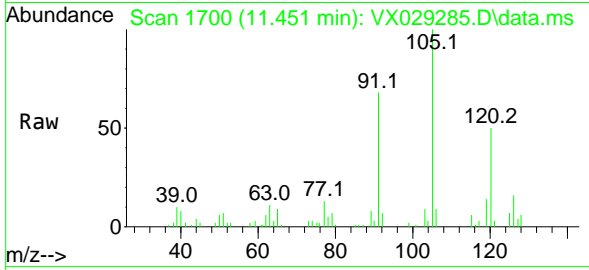
#80
 1,3,5-Trimethylbenzene
 Concen: 0.915 ug/l
 RT: 11.451 min Scan# 1700
 Delta R.T. -0.000 min
 Lab File: VX029285.D
 Acq: 07 Jun 2022 18:32

Instrument :

MSVOA_X

Client Sample Id :

VSTDICC001



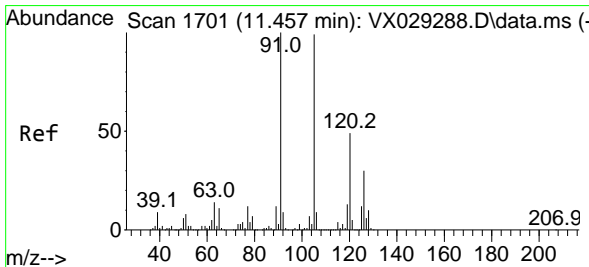
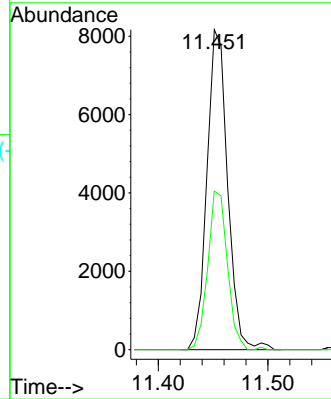
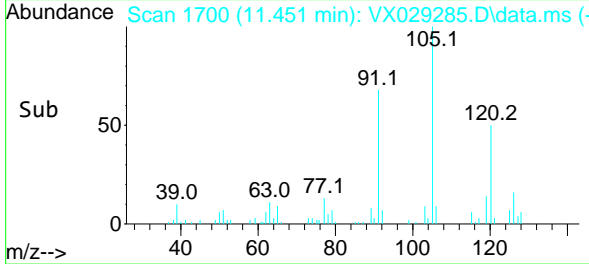
Tgt Ion: 105 Resp: 10684
 Ion Ratio Lower Upper
 105 100
 120 47.0 24.3 72.9

Manual Integrations

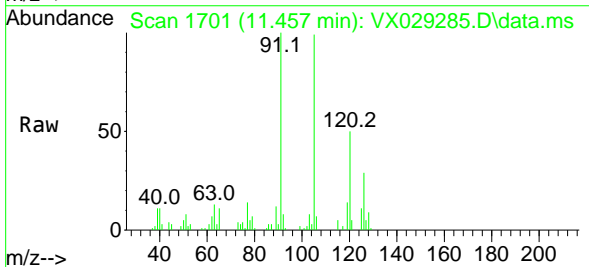
APPROVED

Reviewed By : John Carlone 06/08/2022

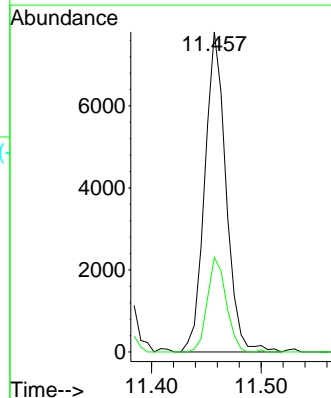
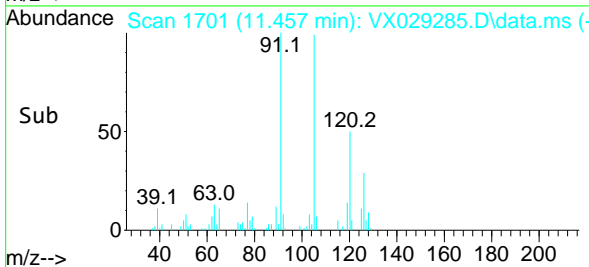
Supervised By : Mahesh Dadoda 06/08/2022

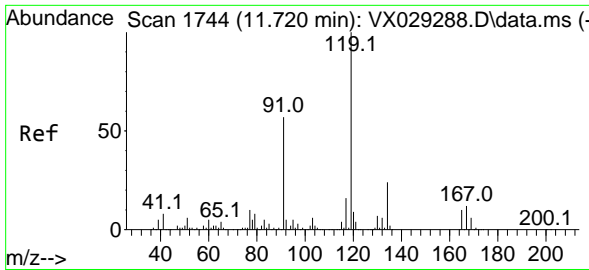


#82
 4-Chlorotoluene
 Concen: 0.936 ug/l
 RT: 11.457 min Scan# 1701
 Delta R.T. -0.000 min
 Lab File: VX029285.D
 Acq: 07 Jun 2022 18:32



Tgt Ion: 91 Resp: 10507
 Ion Ratio Lower Upper
 91 100
 126 26.1 14.9 44.5





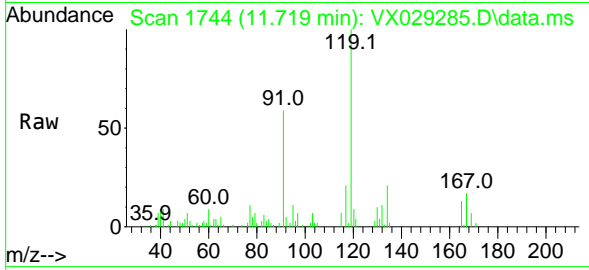
#83
 tert-Butylbenzene
 Concen: 0.890 ug/l
 RT: 11.719 min Scan# 1744
 Delta R.T. -0.000 min
 Lab File: VX029285.D
 Acq: 07 Jun 2022 18:32

Instrument :

MSVOA_X

ClientSampleId :

VSTDIC001



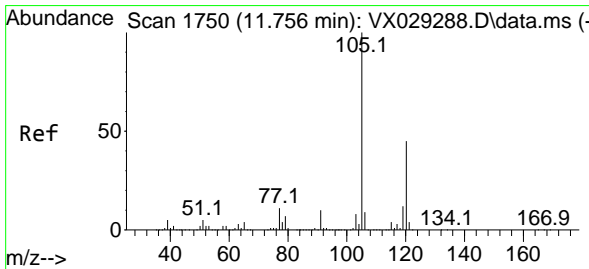
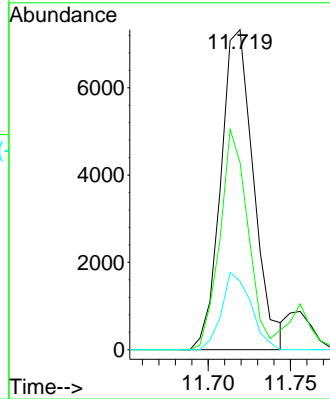
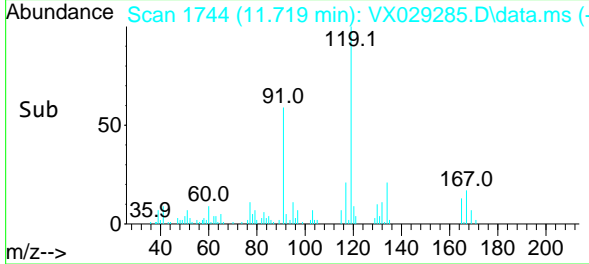
Tgt Ion:119 Resp: 1016
 Ion Ratio Lower Upper
 119 100
 91 58.9 26.9 80.6
 134 21.4 11.4 34.2

Manual Integrations

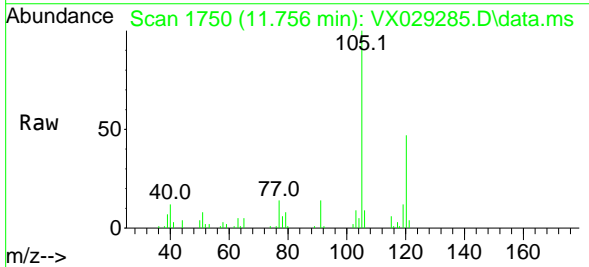
APPROVED

Reviewed By :John Carlone 06/08/2022

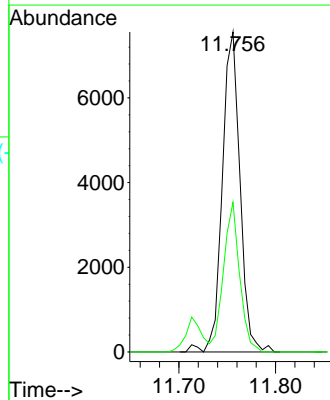
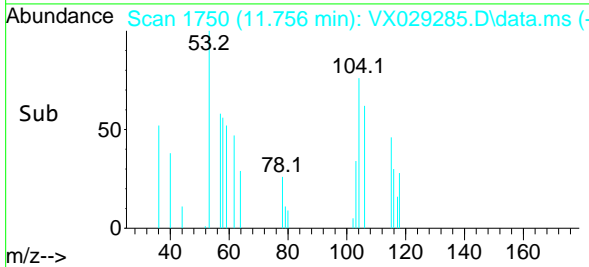
Supervised By :Mahesh Dadoda 06/08/2022

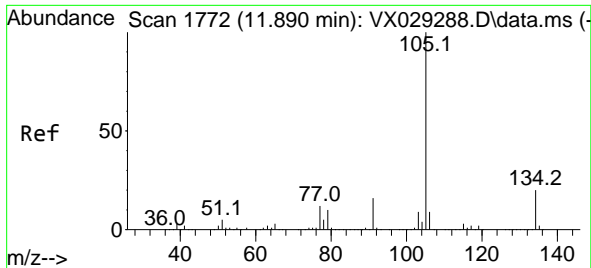


#84
 1,2,4-Trimethylbenzene
 Concen: 0.814 ug/l
 RT: 11.756 min Scan# 1750
 Delta R.T. -0.000 min
 Lab File: VX029285.D
 Acq: 07 Jun 2022 18:32



Tgt Ion:105 Resp: 9574
 Ion Ratio Lower Upper
 105 100
 120 42.8 22.6 67.8





#85
 sec-Butylbenzene
 Concen: 0.827 ug/l
 RT: 11.896 min Scan# 1173
 Delta R.T. 0.006 min
 Lab File: VX029285.D
 Acq: 07 Jun 2022 18:32

Instrument :

MSVOA_X

ClientSampleId :

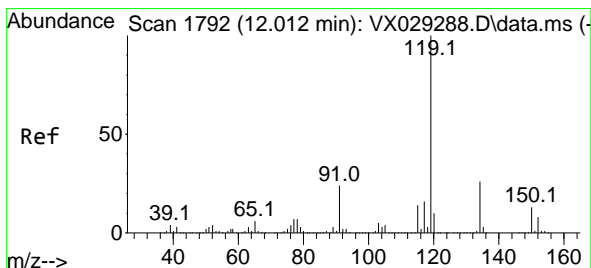
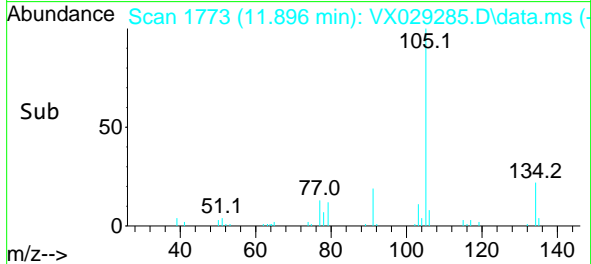
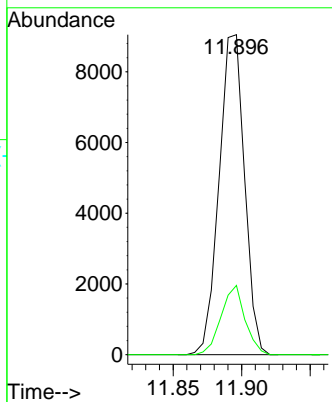
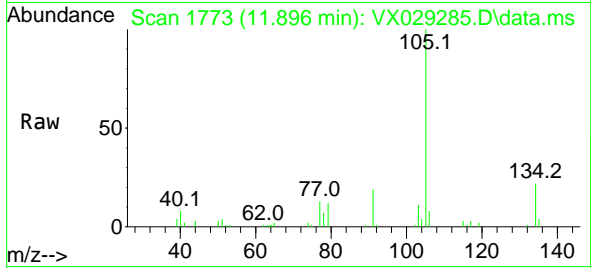
VSTDIC001

Tgt Ion:105 Resp: 1168
 Ion Ratio Lower Upper
 105 100
 134 20.4 10.2 30.4

Manual Integrations

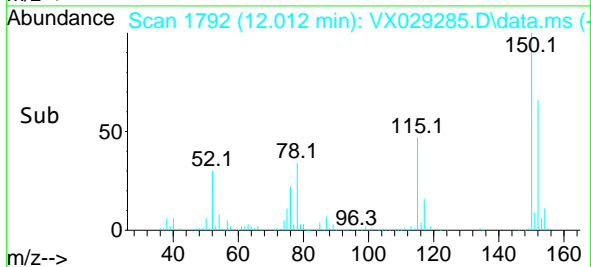
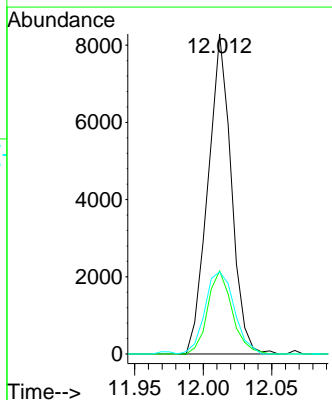
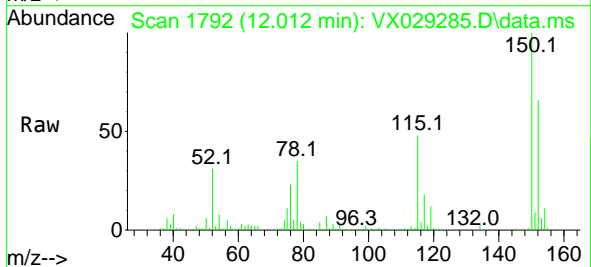
APPROVED

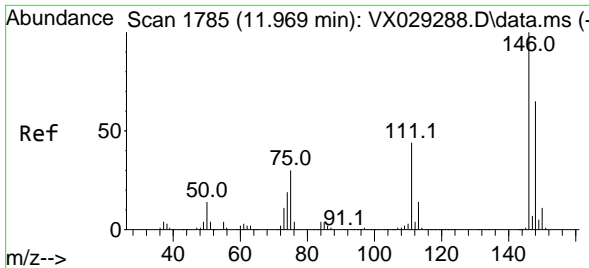
Reviewed By :John Carlone 06/08/2022
 Supervised By :Mahesh Dadoda 06/08/2022



#86
 p-Isopropyltoluene
 Concen: 0.834 ug/l
 RT: 12.012 min Scan# 1792
 Delta R.T. -0.000 min
 Lab File: VX029285.D
 Acq: 07 Jun 2022 18:32

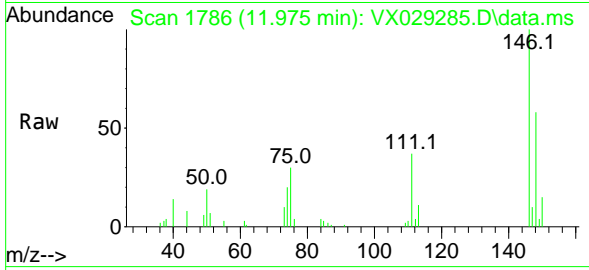
Tgt Ion:119 Resp: 9788
 Ion Ratio Lower Upper
 119 100
 134 27.1 13.0 39.0
 91 32.8 11.3 33.9





#87
 1,3-Dichlorobenzene
 Concen: 0.983 ug/l
 RT: 11.975 min Scan# 1786
 Delta R.T. 0.006 min
 Lab File: VX029285.D
 Acq: 07 Jun 2022 18:32

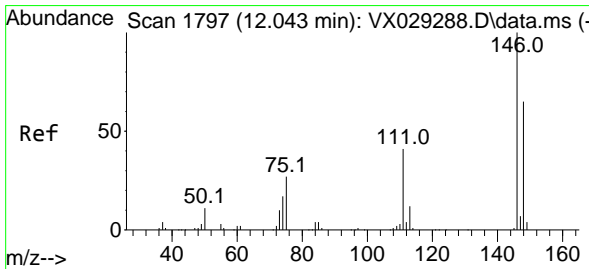
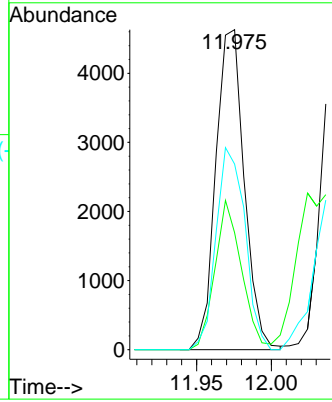
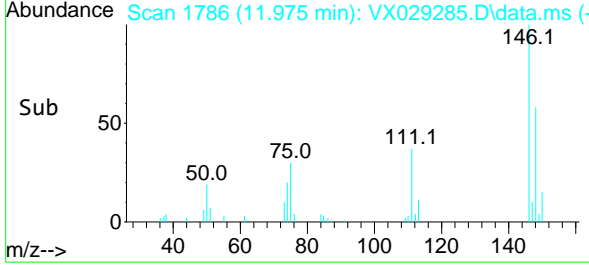
Instrument : MSVOA_X
 ClientSampleId : VSTDIC001



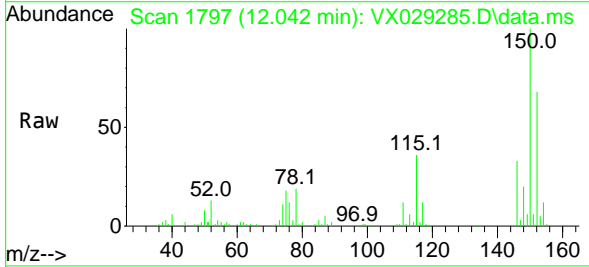
Tgt Ion:146 Resp: 6140
 Ion Ratio Lower Upper
 146 100
 111 43.7 19.7 59.1
 148 64.2 31.6 94.7

Manual Integrations
 APPROVED

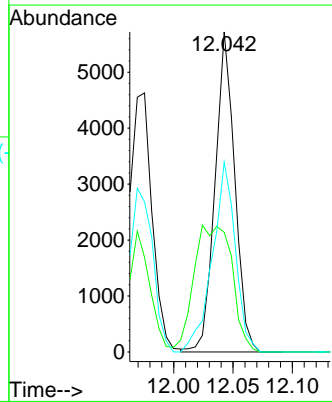
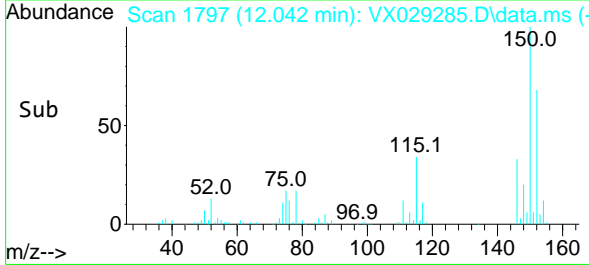
Reviewed By :John Carlone 06/08/2022
 Supervised By :Mahesh Dadoda 06/08/2022

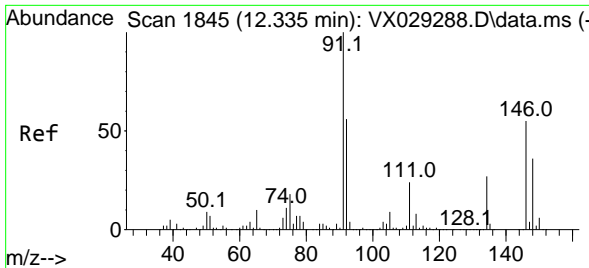


#88
 1,4-Dichlorobenzene
 Concen: 1.047 ug/l m
 RT: 12.042 min Scan# 1797
 Delta R.T. -0.000 min
 Lab File: VX029285.D
 Acq: 07 Jun 2022 18:32



Tgt Ion:146 Resp: 6597
 Ion Ratio Lower Upper
 146 100
 111 40.6 19.2 57.6
 148 59.8 32.3 96.9





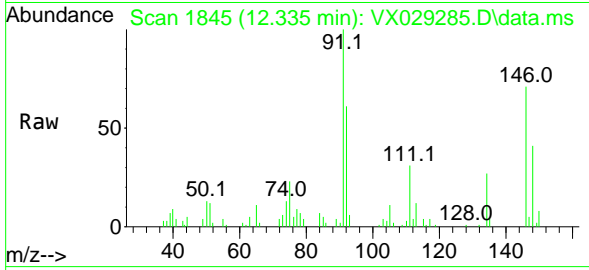
#89
 n-Butylbenzene
 Concen: 0.826 ug/l
 RT: 12.335 min Scan# 1845
 Delta R.T. -0.000 min
 Lab File: VX029285.D
 Acq: 07 Jun 2022 18:32

Instrument :

MSVOA_X

Client Sample Id :

VSTDIC001



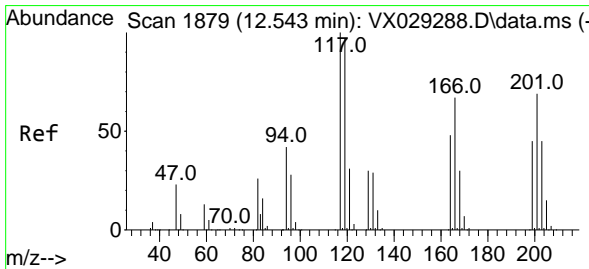
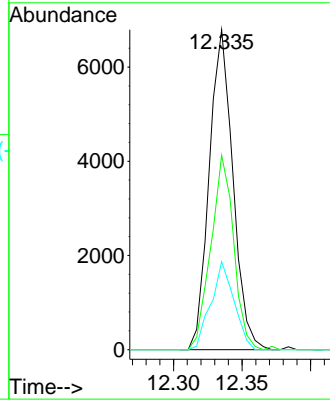
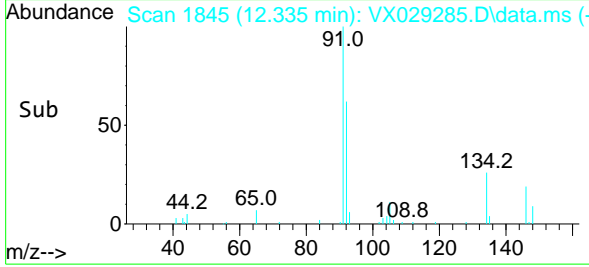
Tgt Ion: 91 Resp: 816
 Ion Ratio Lower Upper
 91 100
 92 58.8 27.8 83.3
 134 26.8 13.3 39.8

Manual Integrations

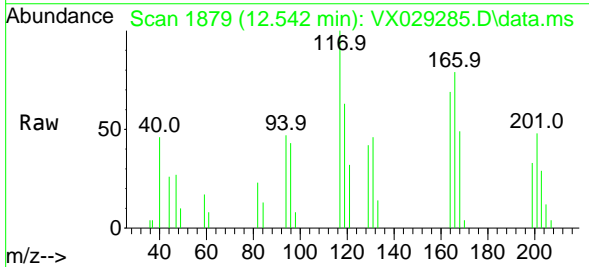
APPROVED

Reviewed By :John Carlone 06/08/2022

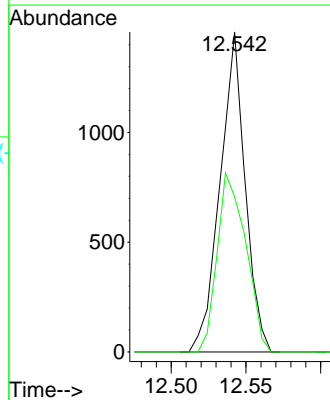
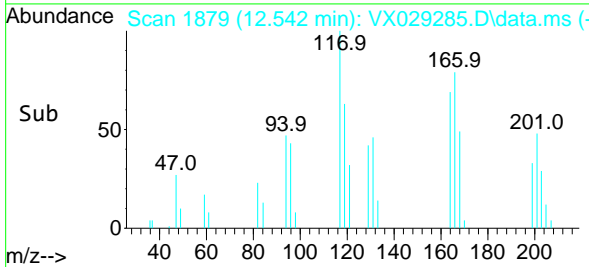
Supervised By :Mahesh Dadoda 06/08/2022

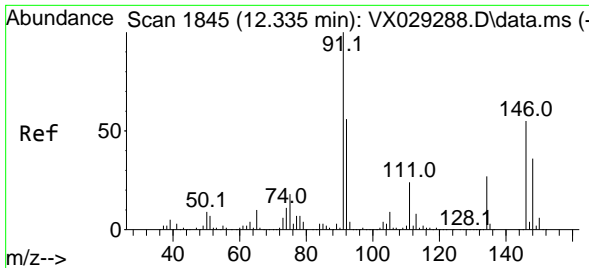


#90
 Hexachloroethane
 Concen: 0.916 ug/l
 RT: 12.542 min Scan# 1879
 Delta R.T. -0.000 min
 Lab File: VX029285.D
 Acq: 07 Jun 2022 18:32



Tgt Ion: 117 Resp: 1702
 Ion Ratio Lower Upper
 117 100
 201 63.5 39.5 118.5





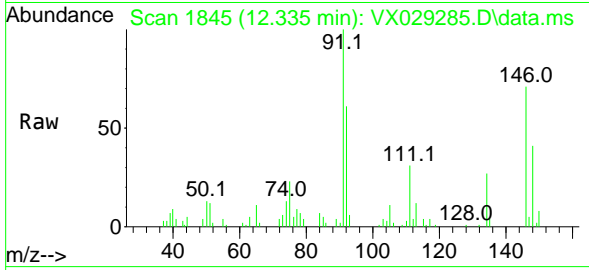
#91
 1,2-Dichlorobenzene
 Concen: 1.039 ug/l
 RT: 12.335 min Scan# 1845
 Delta R.T. -0.000 min
 Lab File: VX029285.D
 Acq: 07 Jun 2022 18:32

Instrument :

MSVOA_X

Client Sample Id :

VSTDIC001



Tgt Ion: 146 Resp: 6330

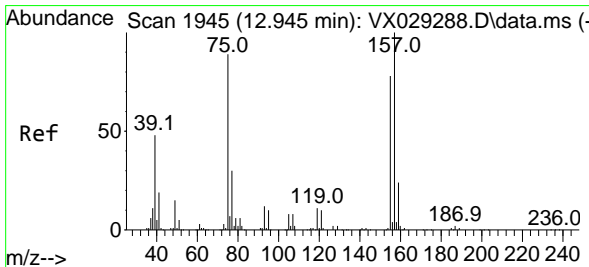
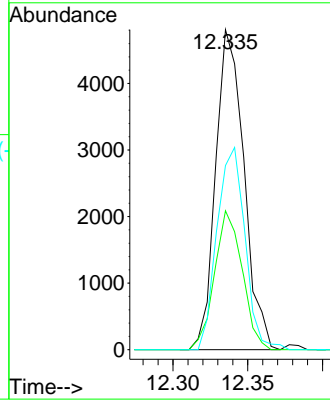
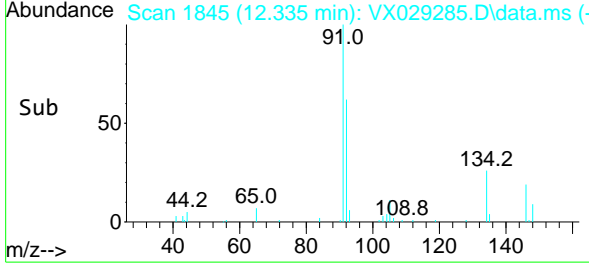
Ion	Ratio	Lower	Upper
146	100		
111	42.4	21.0	63.0
148	62.5	32.6	97.7

Manual Integrations

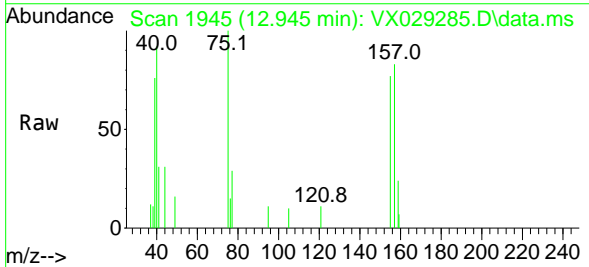
APPROVED

Reviewed By : John Carlone 06/08/2022

Supervised By : Mahesh Dadoda 06/08/2022

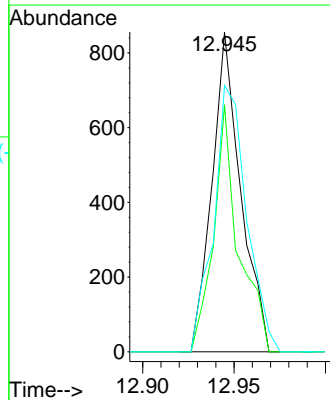
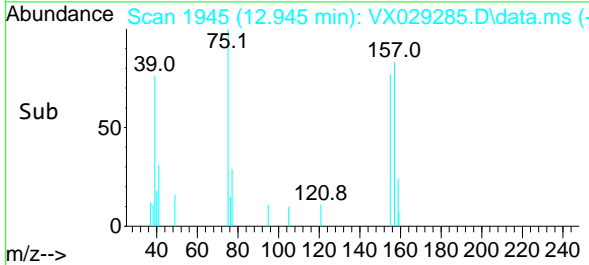


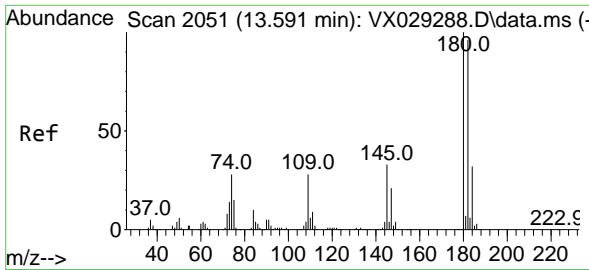
#92
 1,2-Dibromo-3-Chloropropane
 Concen: 0.960 ug/l
 RT: 12.945 min Scan# 1945
 Delta R.T. -0.000 min
 Lab File: VX029285.D
 Acq: 07 Jun 2022 18:32



Tgt Ion: 75 Resp: 935

Ion	Ratio	Lower	Upper
75	100		
155	67.0	47.0	141.2
157	96.0	57.9	173.6





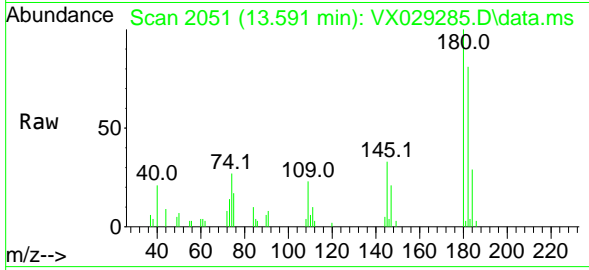
#93
 1,2,4-Trichlorobenzene
 Concen: 0.934 ug/l
 RT: 13.591 min Scan# 2051
 Delta R.T. -0.000 min
 Lab File: VX029285.D
 Acq: 07 Jun 2022 18:32

Instrument :

MSVOA_X

Client Sample Id :

VSTDIC001



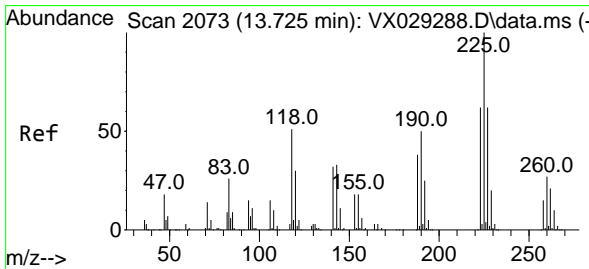
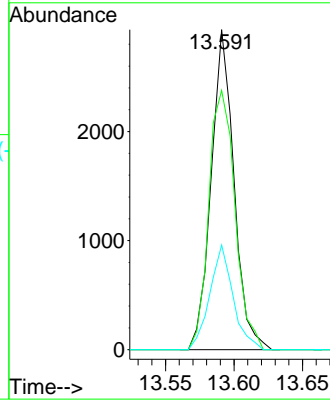
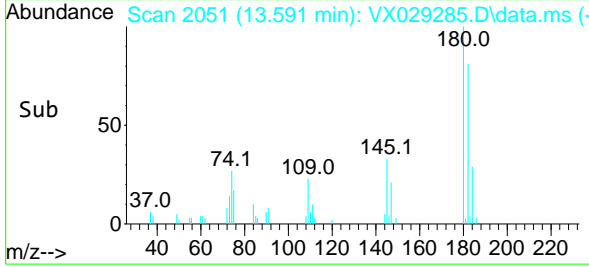
Tgt Ion:180 Resp: 3394
 Ion Ratio Lower Upper
 180 100
 182 93.0 47.7 143.1
 145 33.4 15.2 45.5

Manual Integrations

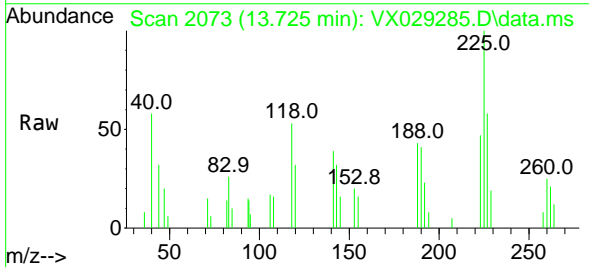
APPROVED

Reviewed By :John Carlone 06/08/2022

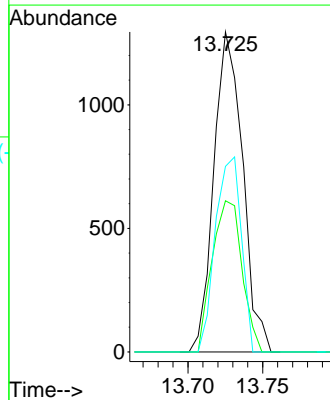
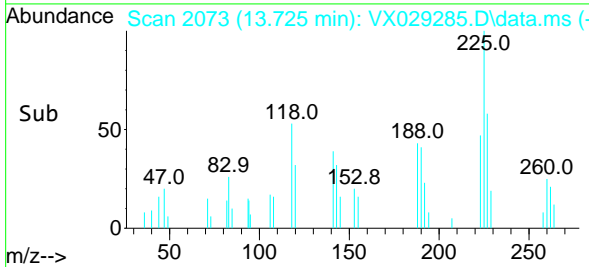
Supervised By :Mahesh Dadoda 06/08/2022

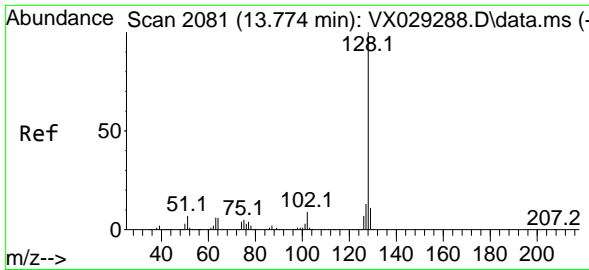


#94
 Hexachlorobutadiene
 Concen: 1.176 ug/l
 RT: 13.725 min Scan# 2073
 Delta R.T. -0.000 min
 Lab File: VX029285.D
 Acq: 07 Jun 2022 18:32



Tgt Ion:225 Resp: 1734
 Ion Ratio Lower Upper
 225 100
 223 48.9 34.2 102.5
 227 54.9 33.9 101.7





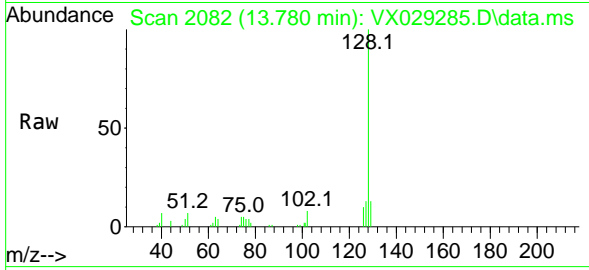
#95
 Naphthalene
 Concen: 0.881 ug/l
 RT: 13.780 min Scan# 2081
 Delta R.T. 0.006 min
 Lab File: VX029285.D
 Acq: 07 Jun 2022 18:32

Instrument :

MSVOA_X

Client SampleId :

VSTDIC001



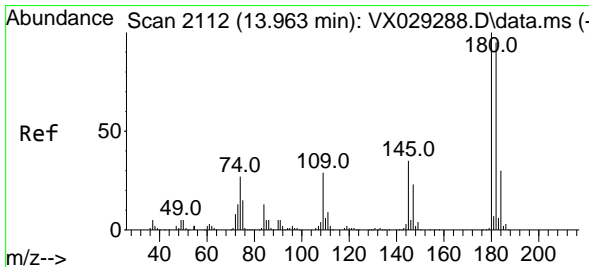
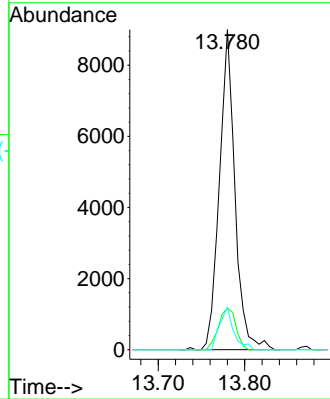
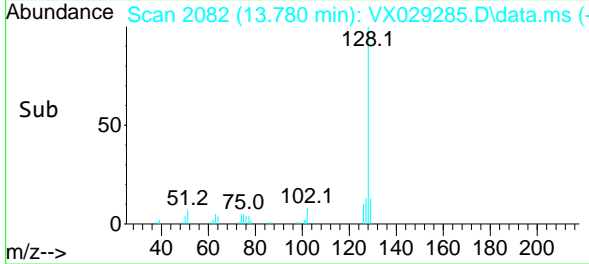
Tgt Ion:128 Resp: 1123
 Ion Ratio Lower Upper
 128 100
 127 14.5 10.2 15.4
 129 12.0 8.7 13.1

Manual Integrations

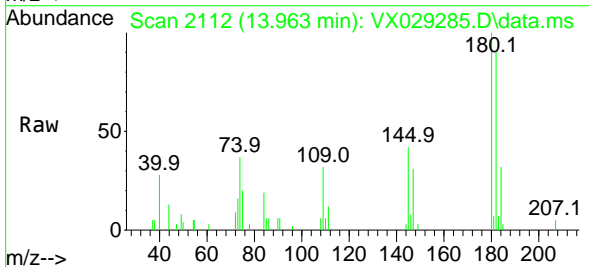
APPROVED

Reviewed By :John Carlone 06/08/2022

Supervised By :Mahesh Dadoda 06/08/2022



#96
 1,2,3-Trichlorobenzene
 Concen: 0.905 ug/l
 RT: 13.963 min Scan# 2112
 Delta R.T. -0.000 min
 Lab File: VX029285.D
 Acq: 07 Jun 2022 18:32



Tgt Ion:180 Resp: 3279
 Ion Ratio Lower Upper
 180 100
 182 89.9 50.0 149.8
 145 40.7 16.2 48.5

