

Data Path : Z:\VOASRV\HPCHEM1\MSVOA X\DATA\VX060819\
 Data File : VX010144.D
 Acq On : 08 Jun 2019 17:30
 Operator : JC/SP
 Sample : K3249-02
 Misc : 5.0mL/MSVOA X/WATER
 ALS Vial : 9 Sample Multiplier: 1

Instrument :
 MSVOA_X
 ClientSampleId :
 BP-EB02-20190605

Integration Parameters: RTEINT.P

Integrator: RTE
 Smoothing : ON Filtering: 5
 Sampling : 1 Min Area: 3 % of largest Peak
 Start Thrs: 0.2 Max Peaks: 100
 Stop Thrs : 0 Peak Location: TOP

If leading or trailing edge < 100 prefer < Baseline drop else tangent >
 Peak separation: 5

Method : Z:\VOASRV\HPCHEM1\MSVOA_X\METHOD\82X060719W.M
 Title : SW846 8260

Signal : TIC

peak #	R.T. min	first scan	max scan	last scan	PK TY	peak height	corr. area	corr. % max.	% of total
1	1.282	13	21	22	rBV	14678	20843	1.60%	0.296%
2	1.300	22	24	28	rVB	26633	24299	1.87%	0.345%
3	2.611	234	239	247	rVB	8343	14671	1.13%	0.208%
4	3.019	297	306	314	rVB	7680	19442	1.49%	0.276%
5	4.690	572	580	593	rVB	8277	29145	2.24%	0.414%
6	5.501	701	713	728	rBV	158380	461947	35.48%	6.557%
7	5.659	728	739	754	rVB	270929	769064	59.07%	10.917%
8	6.062	796	805	820	rBV	148542	386202	29.66%	5.482%
9	6.860	923	936	952	rBV	397240	949464	72.93%	13.478%
10	8.714	1233	1240	1249	rBV	850921	1301911	100.00%	18.481%
11	10.110	1462	1469	1488	rBV	820269	1115348	85.67%	15.832%
12	11.134	1631	1637	1651	rBV	704630	894072	68.67%	12.691%
13	12.073	1786	1791	1800	rBV	829208	1058355	81.29%	15.023%

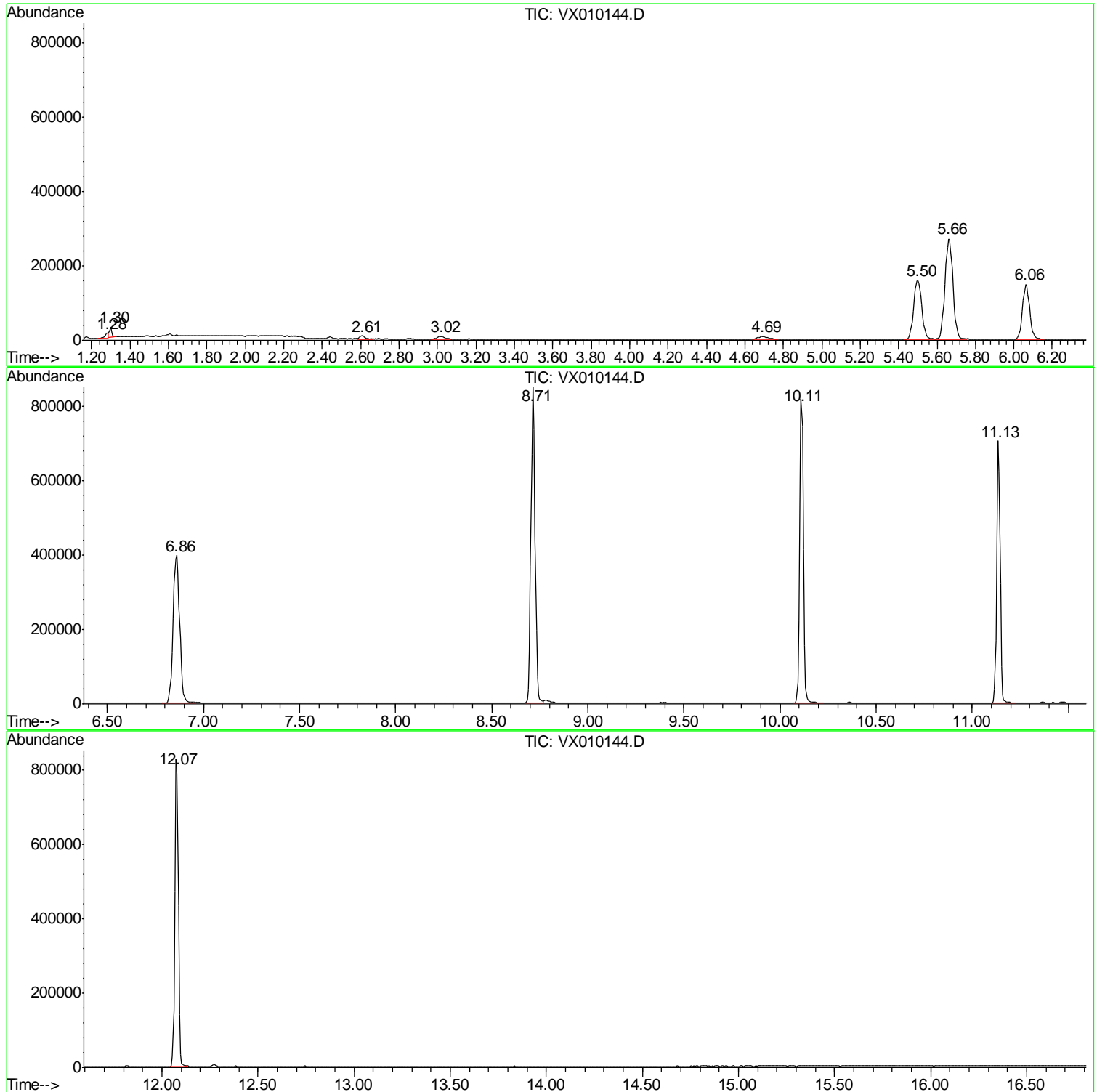
Sum of corrected areas: 7044763

Data Path : Z:\VOASRV\HPCHEM1\MSVOA X\DATA\VX060819\
Data File : VX010144.D
Acq On : 08 Jun 2019 17:30
Operator : JC/SP
Sample : K3249-02
Misc : 5.0mL/MSVOA X/WATER
ALS Vial : 9 Sample Multiplier: 1

Instrument :
MSVOA_X
ClientSampled :
BP-EB02-20190605

Quant Method : Z:\VOASRV\HPCHEM1\MSVOA_X\METHOD\82X060719W.M
Quant Title : SW846 8260

TIC Library : C:\DATABASE\NIST11.L
TIC Integration Parameters: LSCINT.P



Data Path : Z:\VOASRV\HPCHEM1\MSVOA_X\DATA\VX060819\
Data File : VX010144.D
Acq On : 08 Jun 2019 17:30
Operator : JC/SP
Sample : K3249-02
Misc : 5.0mL/MSVOA_X/WATER
ALS Vial : 9 Sample Multiplier: 1

Instrument :
MSVOA_X
ClientSampleId :
BP-EB02-20190605

Quant Method : Z:\VOASRV\HPCHEM1\MSVOA_X\METHOD\82X060719W.M
Quant Title : SW846 8260

TIC Library : C:\DATABASE\NIST11.L
TIC Integration Parameters: LSCINT.P

No Library Search Compounds Detected

Data Path : Z:\VOASRV\HPCHEM1\MSVOA_X\DATA\VX060819\
Data File : VX010144.D
Acq On : 08 Jun 2019 17:30
Operator : JC/SP
Sample : K3249-02
Misc : 5.0mL/MSVOA_X/WATER
ALS Vial : 9 Sample Multiplier: 1

Instrument :
MSVOA_X
ClientSampleId :
BP-EB02-20190605

Quant Method : Z:\VOASRV\HPCHEM1\MSVOA_X\METHOD\82X060719W.M
Quant Title : SW846 8260

TIC Library : C:\DATABASE\NIST11.L
TIC Integration Parameters: LSCINT.P

TIC Top Hit name	RT	EstConc	Units	Response	--Internal Standard--			
					#	RT	Resp	Conc
