

Data Path : Z:\voasrv\HPCHEM1\MSVOA_X\Data\VX060821\
 Data File : VX022589.D
 Acq On : 09 Jun 2021 01:55
 Operator : JC/MD
 Sample : M2625-28
 Misc : 5.0mL/MSVOA_X/WATER
 ALS Vial : 40 Sample Multiplier: 1

Instrument :
 MSVOA_X
 ClientSampleId :
 18-B12(166-170)

Quant Time: Jun 09 04:04:19 2021
 Quant Method : Z:\voasrv\HPCHEM1\MSVOA_X\Method\82X060721W.M
 Quant Title : SW846 8260
 QLast Update : Mon Jun 07 14:27:50 2021
 Response via : Initial Calibration

Compound	R.T.	QIon	Response	Conc	Units	Dev(Min)

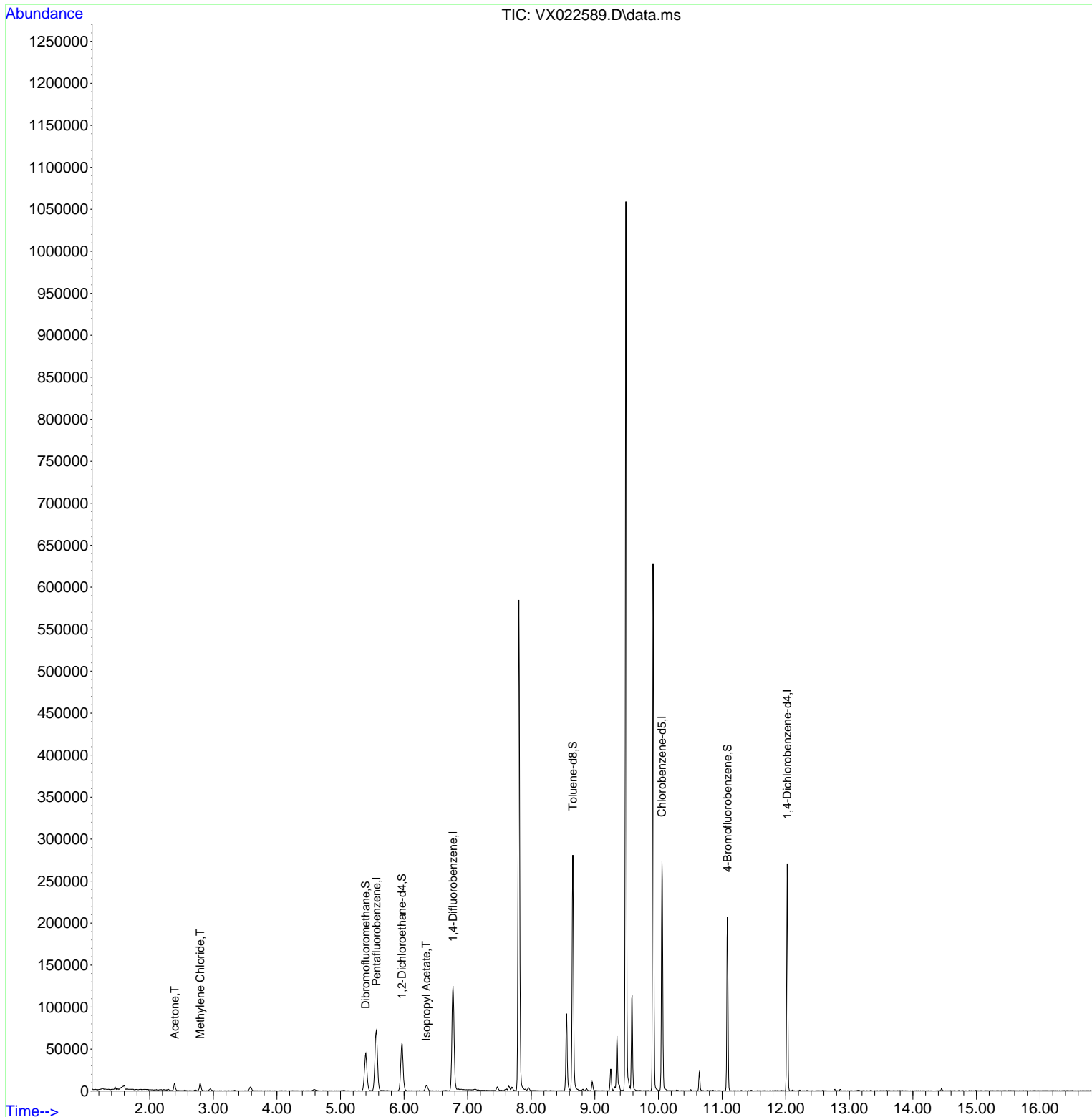
Internal Standards						
1) Pentafluorobenzene	5.562	168	60956	50.000	ug/l	# 0.00
34) 1,4-Difluorobenzene	6.769	114	124061	50.000	ug/l	0.00
63) Chlorobenzene-d5	10.055	117	117806	50.000	ug/l	0.00
72) 1,4-Dichlorobenzene-d4	12.024	152	46689	50.000	ug/l	0.00
System Monitoring Compounds						
33) 1,2-Dichloroethane-d4	5.964	65	51834	47.833	ug/l	0.00
Spiked Amount	50.000	Range	78 - 117	Recovery	=	95.660%
35) Dibromofluoromethane	5.397	113	36800	47.410	ug/l	0.00
Spiked Amount	50.000	Range	75 - 124	Recovery	=	94.820%
50) Toluene-d8	8.653	98	156662	50.583	ug/l	0.00
Spiked Amount	50.000	Range	92 - 112	Recovery	=	101.160%
62) 4-Bromofluorobenzene	11.085	95	56688	49.243	ug/l	0.00
Spiked Amount	50.000	Range	83 - 123	Recovery	=	98.480%
Target Compounds						
						Qvalue
16) Acetone	2.392	43	9303	19.106	ug/l	97
20) Methylene Chloride	2.794	84	3882	3.818	ug/l #	85
43) Isopropyl Acetate	6.348	43	9097	3.643	ug/l #	93

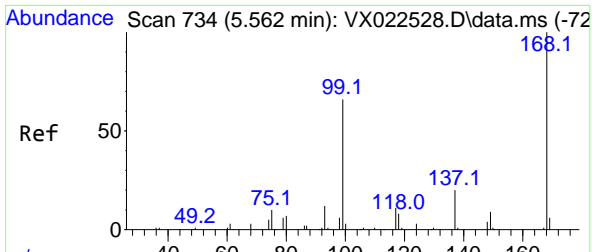
(#) = qualifier out of range (m) = manual integration (+) = signals summed

Data Path : Z:\voasrv\HPCHEM1\MSVOA_X\Data\VX060821\
 Data File : VX022589.D
 Acq On : 09 Jun 2021 01:55
 Operator : JC/MD
 Sample : M2625-28
 Misc : 5.0mL/MSVOA_X/WATER
 ALS Vial : 40 Sample Multiplier: 1

Instrument :
 MSVOA_X
 ClientSampleId :
 18-B12(166-170)

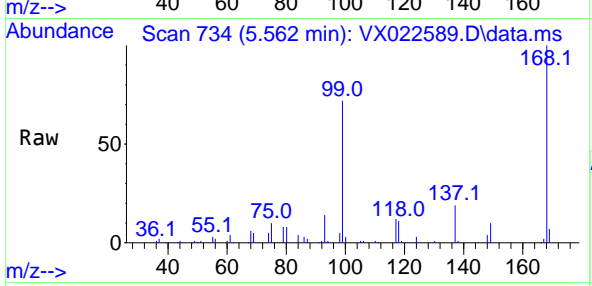
Quant Time: Jun 09 04:04:19 2021
 Quant Method : Z:\voasrv\HPCHEM1\MSVOA_X\Method\82X060721W.M
 Quant Title : SW846 8260
 QLast Update : Mon Jun 07 14:27:50 2021
 Response via : Initial Calibration



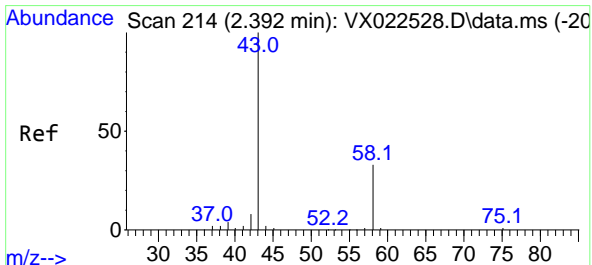
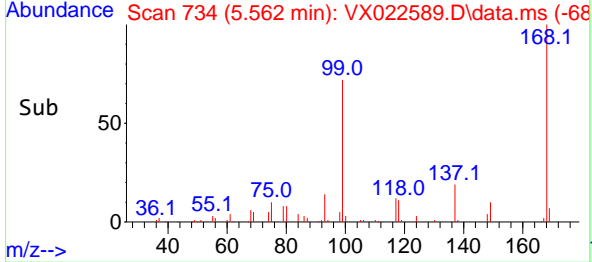
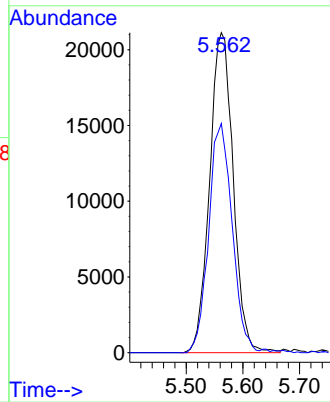


#1
 Pentafluorobenzene
 Concen: 50.000 ug/l
 RT: 5.562 min Scan# 734
 Delta R.T. 0.000 min
 Lab File: VX022589.D
 Acq: 09 Jun 2021 01:55

Instrument :
 MSVOA_X
 ClientSampled :
 18-B12(166-170)

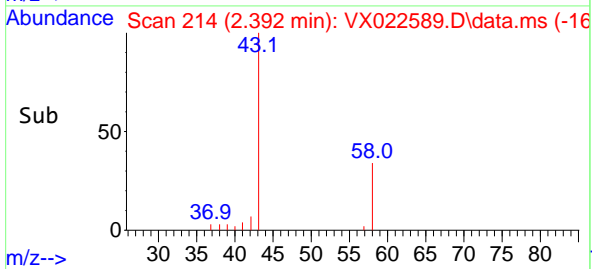
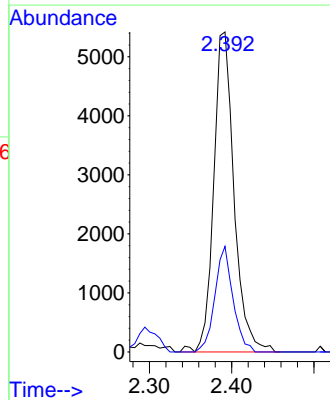
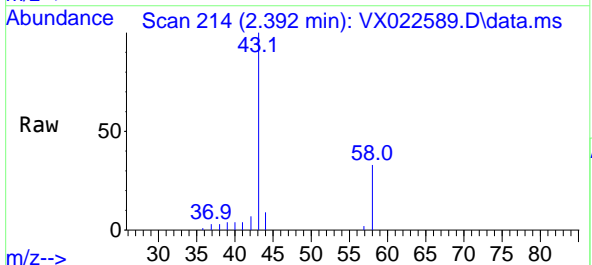


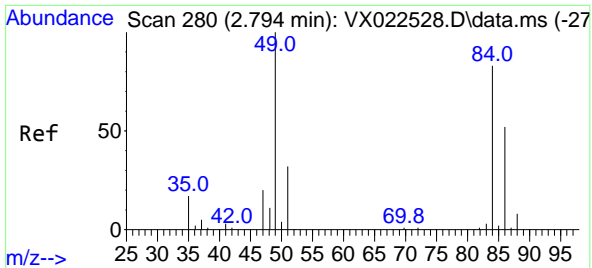
Tgt Ion:168 Resp: 60956
 Ion Ratio Lower Upper
 168 100
 99 71.6 45.8 68.6#



#16
 Acetone
 Concen: 19.106 ug/l
 RT: 2.392 min Scan# 214
 Delta R.T. -0.000 min
 Lab File: VX022589.D
 Acq: 09 Jun 2021 01:55

Tgt Ion: 43 Resp: 9303
 Ion Ratio Lower Upper
 43 100
 58 33.0 27.8 41.8



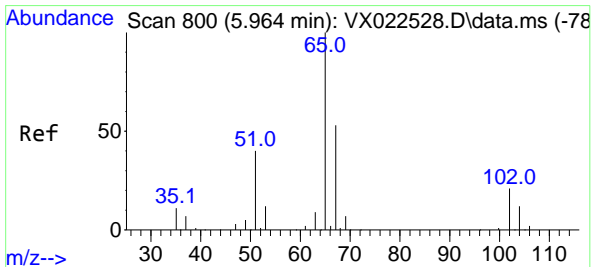
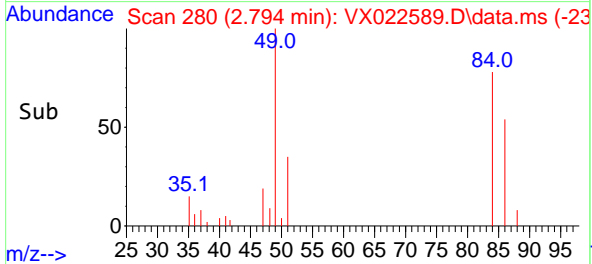
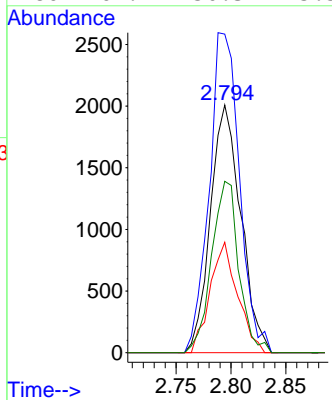
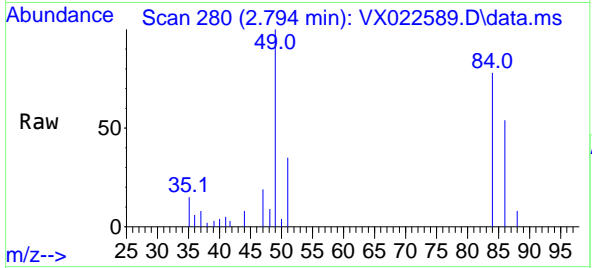


#20
 Methylene Chloride
 Concen: 3.818 ug/l
 RT: 2.794 min Scan# 280
 Delta R.T. 0.000 min
 Lab File: VX022589.D
 Acq: 09 Jun 2021 01:55

Instrument :
 MSVOA_X
 ClientSampled :
 18-B12(166-170)

Tgt Ion: 84 Resp: 3882

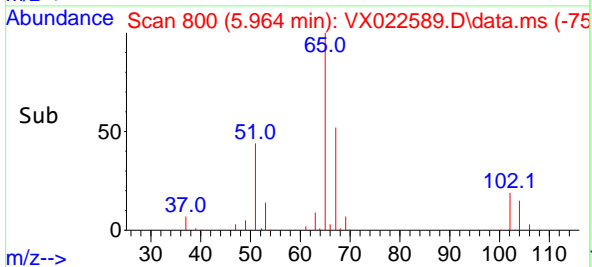
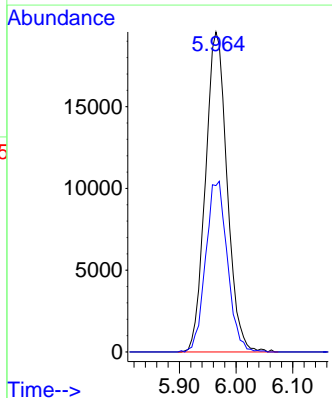
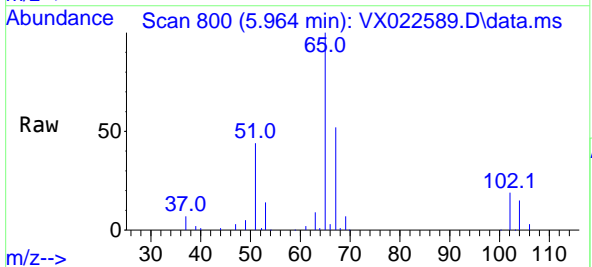
Ion	Ratio	Lower	Upper
84	100		
49	128.6	88.6	132.8
51	44.5	27.0	40.6#
86	69.2	50.3	75.5

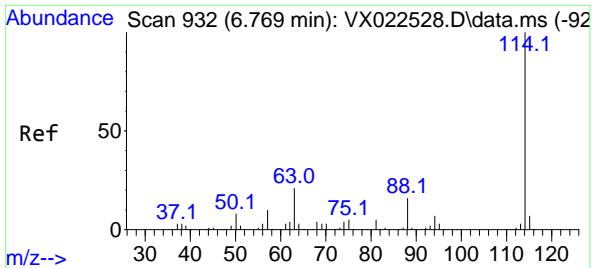


#33
 1,2-Dichloroethane-d4
 Concen: 47.833 ug/l
 RT: 5.964 min Scan# 800
 Delta R.T. 0.000 min
 Lab File: VX022589.D
 Acq: 09 Jun 2021 01:55

Tgt Ion: 65 Resp: 51834

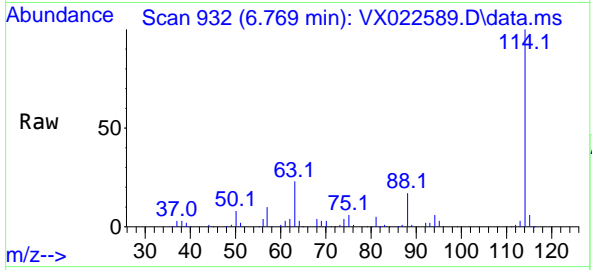
Ion	Ratio	Lower	Upper
65	100		
67	53.7	0.0	105.4





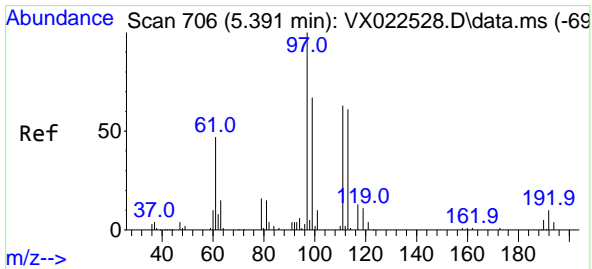
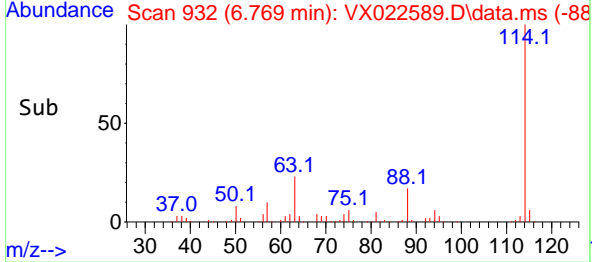
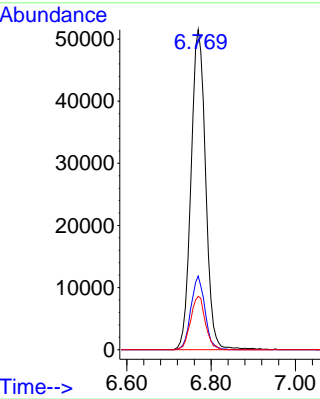
#34
 1,4-Difluorobenzene
 Concen: 50.000 ug/l
 RT: 6.769 min Scan# 932
 Delta R.T. 0.000 min
 Lab File: VX022589.D
 Acq: 09 Jun 2021 01:55

Instrument :
 MSVOA_X
 ClientSampleId :
 18-B12(166-170)

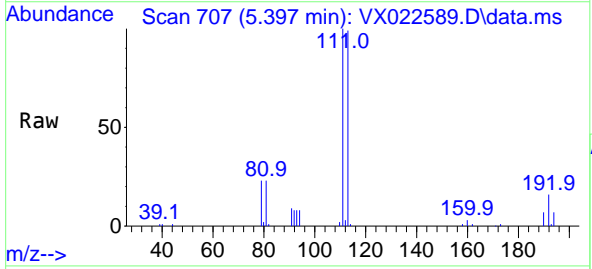


Tgt Ion:114 Resp: 124061

Ion	Ratio	Lower	Upper
114	100		
63	23.0	0.0	40.8
88	16.6	0.0	32.8

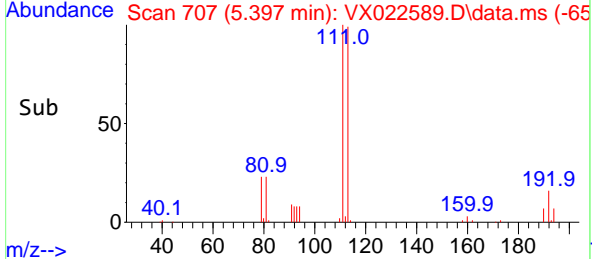
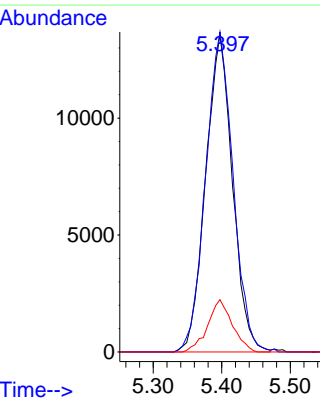


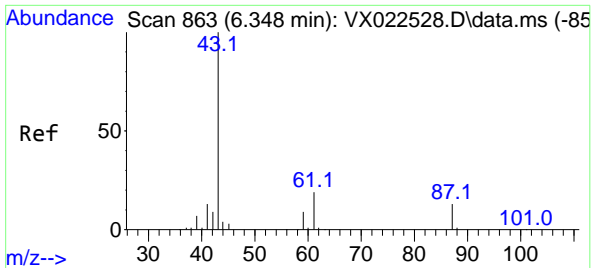
#35
 Dibromofluoromethane
 Concen: 47.410 ug/l
 RT: 5.397 min Scan# 707
 Delta R.T. 0.006 min
 Lab File: VX022589.D
 Acq: 09 Jun 2021 01:55



Tgt Ion:113 Resp: 36800

Ion	Ratio	Lower	Upper
113	100		
111	103.5	81.9	122.9
192	15.1	16.7	25.1#



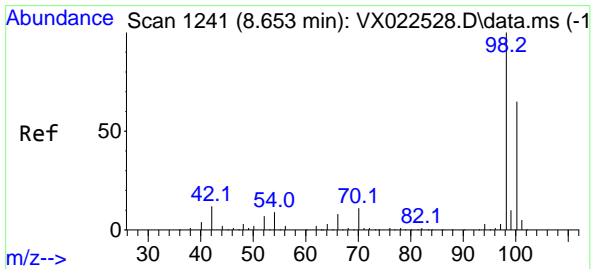
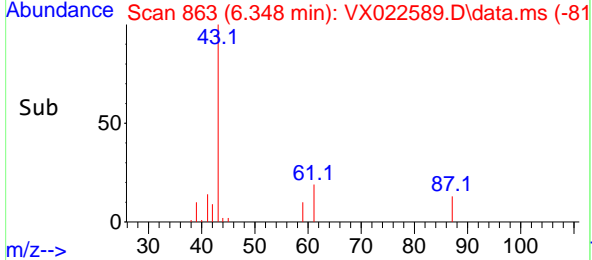
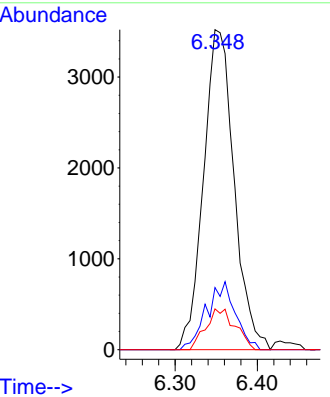
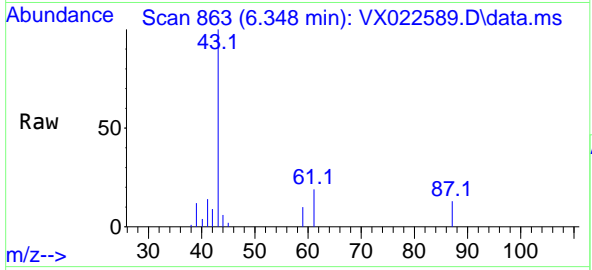


#43
 Isopropyl Acetate
 Concen: 3.643 ug/l
 RT: 6.348 min Scan# 863
 Delta R.T. 0.000 min
 Lab File: VX022589.D
 Acq: 09 Jun 2021 01:55

Instrument :
 MSVOA_X
 ClientSampled :
 18-B12(166-170)

Tgt Ion: 43 Resp: 9097

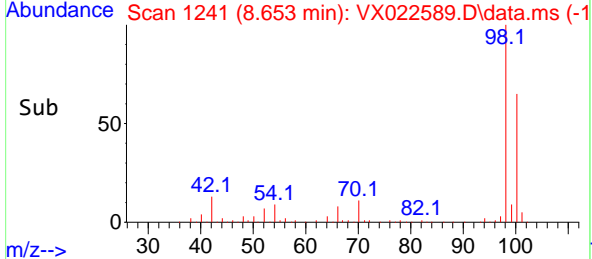
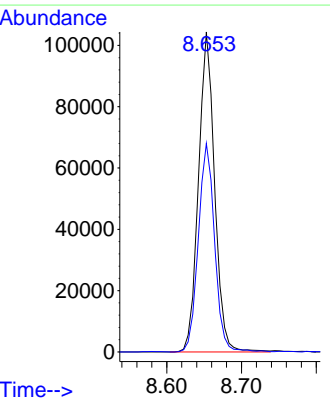
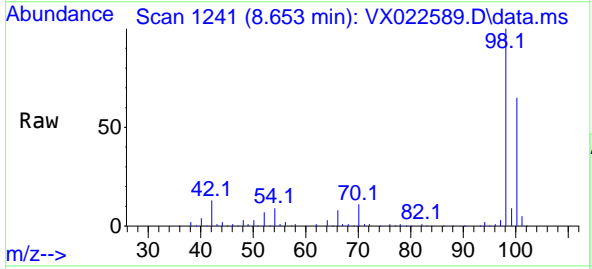
Ion	Ratio	Lower	Upper
43	100		
61	20.0	18.2	27.4
87	12.2	12.5	18.7#

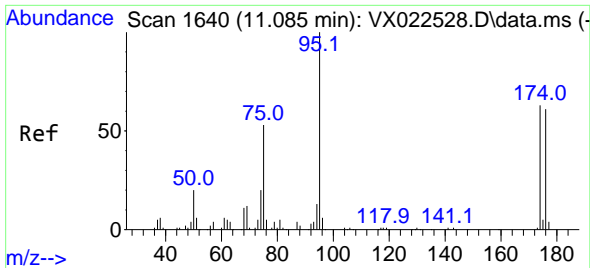


#50
 Toluene-d8
 Concen: 50.583 ug/l
 RT: 8.653 min Scan# 1241
 Delta R.T. -0.000 min
 Lab File: VX022589.D
 Acq: 09 Jun 2021 01:55

Tgt Ion: 98 Resp: 156662

Ion	Ratio	Lower	Upper
98	100		
100	65.9	51.9	77.9



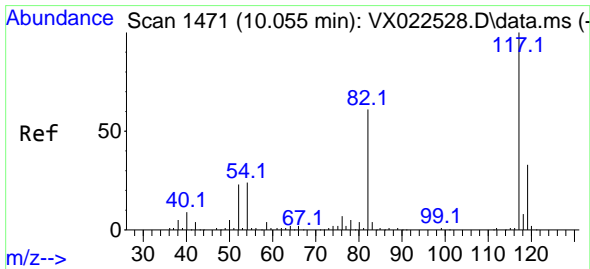
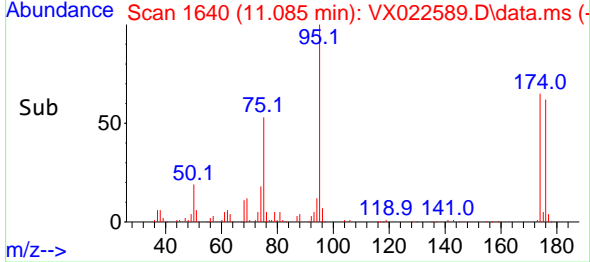
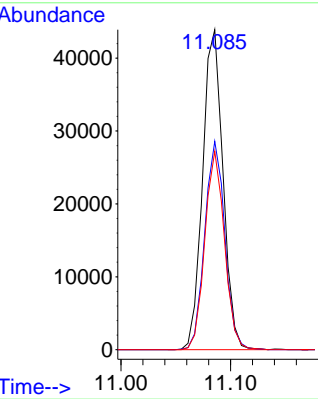
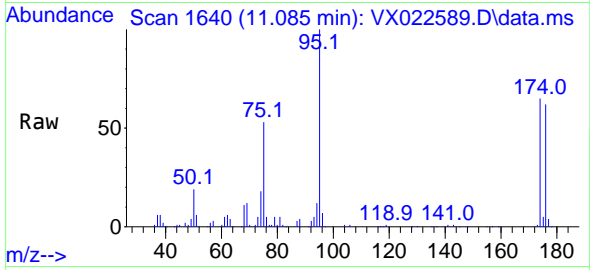


#62
 4-Bromofluorobenzene
 Concen: 49.243 ug/l
 RT: 11.085 min Scan# 1640
 Delta R.T. 0.000 min
 Lab File: VX022589.D
 Acq: 09 Jun 2021 01:55

Instrument :
 MSVOA_X
 ClientSampled :
 18-B12(166-170)

Tgt Ion: 95 Resp: 56688

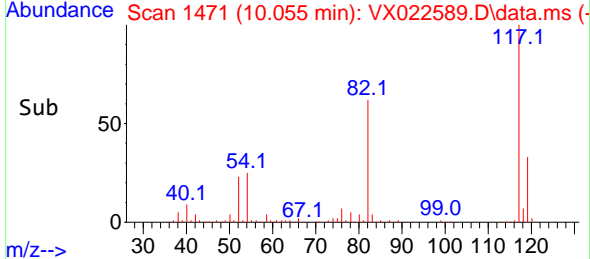
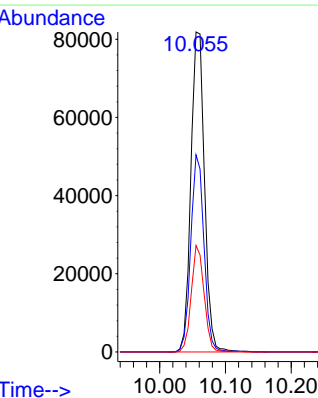
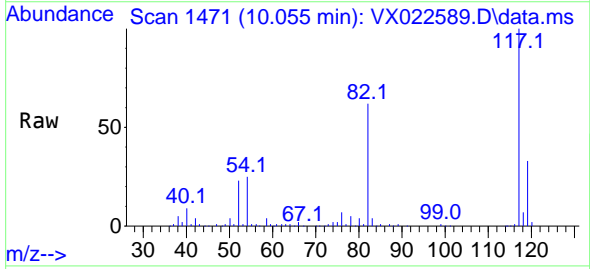
Ion	Ratio	Lower	Upper
95	100		
174	64.2	0.0	154.6
176	59.9	0.0	155.8

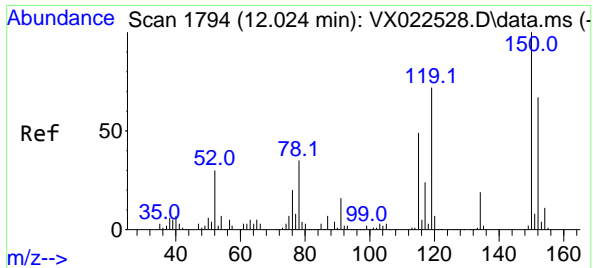


#63
 Chlorobenzene-d5
 Concen: 50.000 ug/l
 RT: 10.055 min Scan# 1471
 Delta R.T. 0.000 min
 Lab File: VX022589.D
 Acq: 09 Jun 2021 01:55

Tgt Ion: 117 Resp: 117806

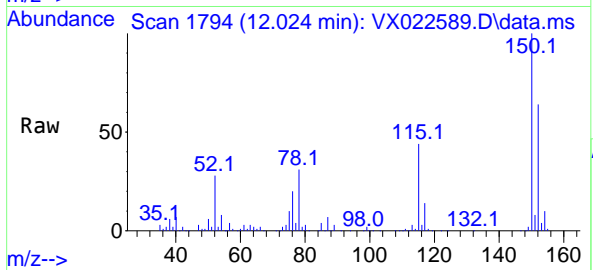
Ion	Ratio	Lower	Upper
117	100		
82	61.6	47.4	71.2
119	33.3	26.6	39.8





#72
 1,4-Dichlorobenzene-d4
 Concen: 50.000 ug/l
 RT: 12.024 min Scan# 1794
 Delta R.T. 0.000 min
 Lab File: VX022589.D
 Acq: 09 Jun 2021 01:55

Instrument :
 MSVOA_X
 ClientSampled :
 18-B12(166-170)



Tgt Ion:152 Resp: 46689

Ion	Ratio	Lower	Upper
152	100		
115	68.2	41.1	123.3
150	158.8	0.0	349.0

