

Data Path : Z:\voasrv\HPCHEM1\MSVOA\_X\Data\VX060823\  
 Data File : VX036080.D  
 Acq On : 08 Jun 2023 19:02  
 Operator : JC/MD  
 Sample : 03097-05  
 Misc : 5.0mL/MSVOA\_X/WATER  
 ALS Vial : 14 Sample Multiplier: 1

Instrument :  
 MSVOA\_X  
 ClientSampleId :  
 EZEN2

Quant Time: Jun 09 02:24:21 2023  
 Quant Method : Z:\voasrv\HPCHEM1\MSVOA\_X\Method\SFAMXML060623WMA.M  
 Quant Title : VOC Analysis  
 QLast Update : Wed Jun 07 05:37:48 2023  
 Response via : Initial Calibration

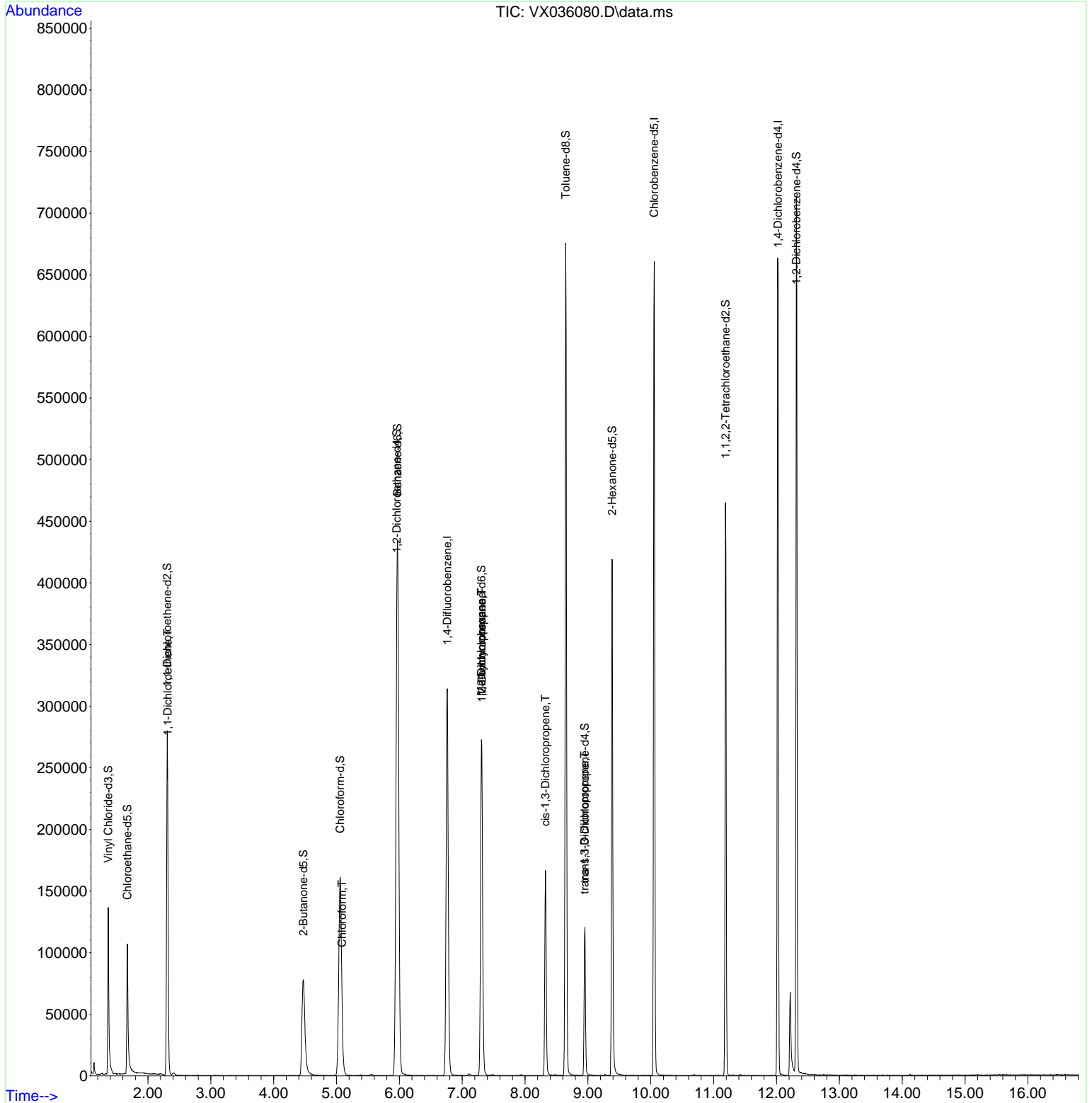
Compound	R.T.	QIon	Response	Conc	Units	Dev(Min)
-----						
Internal Standards						
1) 1,4-Difluorobenzene	6.763	114	296702	50.000	ug/L	0.00
28) Chlorobenzene-d5	10.055	117	281078	50.000	ug/L	0.00
58) 1,4-Dichlorobenzene-d4	12.024	152	128812	50.000	ug/L	0.00
System Monitoring Compounds						
4) Vinyl Chloride-d3	1.368	65	99058	49.140	ug/L	0.00
Spiked Amount	50.000	Range 60 - 135	Recovery =	98.280%		
7) Chloroethane-d5	1.672	69	77117	49.881	ug/L	0.00
Spiked Amount	50.000	Range 70 - 130	Recovery =	99.760%		
11) 1,1-Dichloroethene-d2	2.307	65	51598	50.484	ug/L	0.00
Spiked Amount	50.000	Range 60 - 125	Recovery =	100.960%		
21) 2-Butanone-d5	4.471	46	163035	98.671	ug/L	0.00
Spiked Amount	100.000	Range 40 - 130	Recovery =	98.670%		
24) Chloroform-d	5.056	84	202801	48.246	ug/L	0.00
Spiked Amount	50.000	Range 70 - 125	Recovery =	96.500%		
26) 1,2-Dichloroethane-d4	5.958	65	156427	50.999	ug/L	0.00
Spiked Amount	50.000	Range 70 - 125	Recovery =	102.000%		
32) Benzene-d6	5.970	84	415518	49.142	ug/L	0.00
Spiked Amount	50.000	Range 70 - 125	Recovery =	98.280%		
36) 1,2-Dichloropropane-d6	7.306	67	131120	49.890	ug/L	0.00
Spiked Amount	50.000	Range 70 - 120	Recovery =	99.780%		
41) Toluene-d8	8.647	98	370427	47.598	ug/L	0.00
Spiked Amount	50.000	Range 80 - 120	Recovery =	95.200%		
43) trans-1,3-Dichloroprop...	8.952	79	54495	43.196	ug/L	0.00
Spiked Amount	50.000	Range 60 - 125	Recovery =	86.400%		
47) 2-Hexanone-d5	9.384	63	112654	96.262	ug/L	0.00
Spiked Amount	100.000	Range 45 - 130	Recovery =	96.260%		
56) 1,1,2,2-Tetrachloroeth...	11.189	84	171389	47.743	ug/L	0.00
Spiked Amount	50.000	Range 65 - 120	Recovery =	95.480%		
66) 1,2-Dichlorobenzene-d4	12.317	152	129505	51.783	ug/L	0.00
Spiked Amount	50.000	Range 80 - 120	Recovery =	103.560%		
-----						
Target Compounds						Qvalue
12) 1,1-Dichloroethene	2.313	96	1223	0.620	ug/L #	1
25) Chloroform	5.086	83	9860	2.152	ug/L	99
35) Methylcyclohexane	7.306	83	33341	9.005	ug/L #	17
37) 1,2-Dichloropropane	7.312	63	16150	6.571	ug/L #	87
39) cis-1,3-Dichloropropene	8.324	75	4360	1.135	ug/L #	54
44) trans-1,3-Dichloropropene	8.946	75	2782	0.774	ug/L	91
-----						

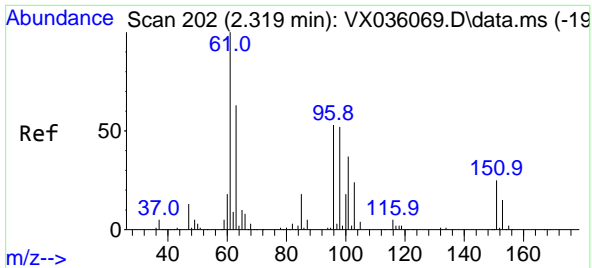
(#) = qualifier out of range (m) = manual integration (+) = signals summed

Data Path : Z:\voasrv\HPCHEM1\MSVOA\_X\Data\VX060823\  
 Data File : VX036080.D  
 Acq On : 08 Jun 2023 19:02  
 Operator : JC/MD  
 Sample : 03097-05  
 Misc : 5.0mL/MSVOA\_X/WATER  
 ALS Vial : 14 Sample Multiplier: 1

Instrument :  
 MSVOA\_X  
 ClientSampleId :  
 EZEN2

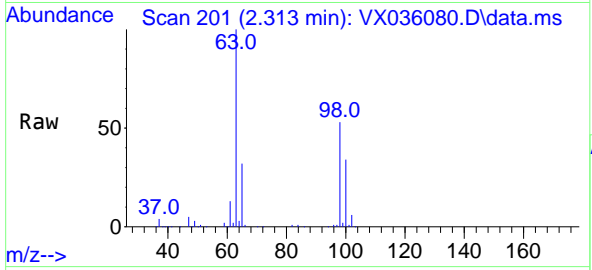
Quant Time: Jun 09 02:24:21 2023  
 Quant Method : Z:\voasrv\HPCHEM1\MSVOA\_X\Method\SFAMXML060623WMA.M  
 Quant Title : VOC Analysis  
 QLast Update : Wed Jun 07 05:37:48 2023  
 Response via : Initial Calibration



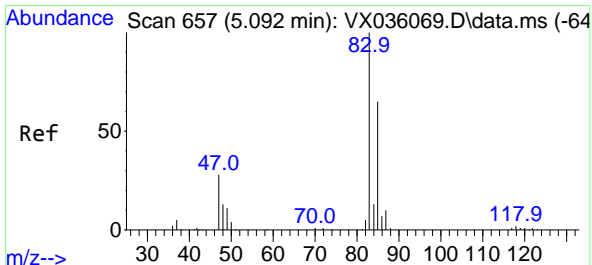
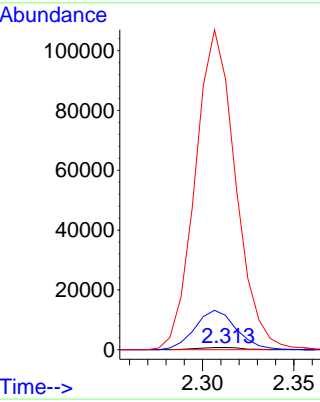
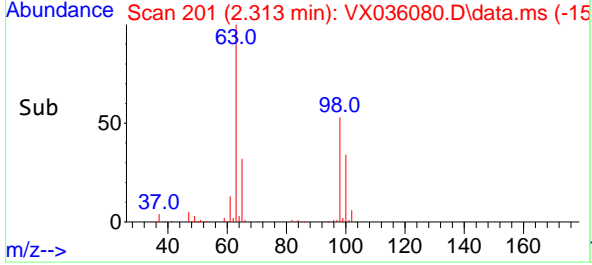


#12  
 1,1-Dichloroethene  
 Concen: 0.620 ug/L  
 RT: 2.313 min Scan# 201  
 Delta R.T. -0.006 min  
 Lab File: VX036080.D  
 Acq: 08 Jun 2023 19:02

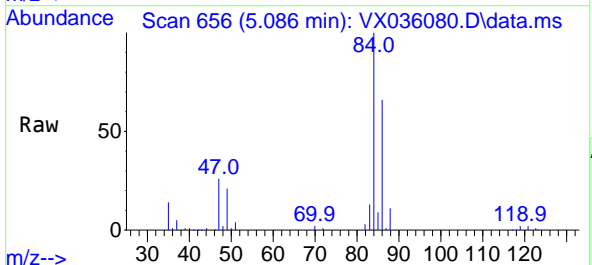
Instrument : MSVOA\_X  
 ClientSampleId : EZEN2



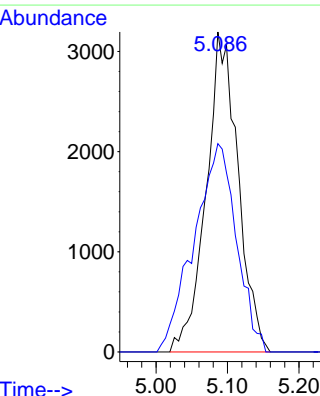
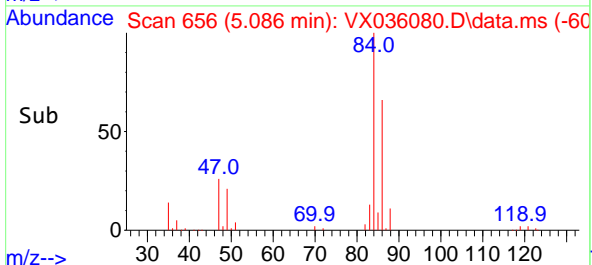
Tgt Ion: 96 Resp: 1223  
 Ion Ratio Lower Upper  
 96 100  
 61 1579.3 132.5 246.1#  
 63 12462.8 95.1 176.7#

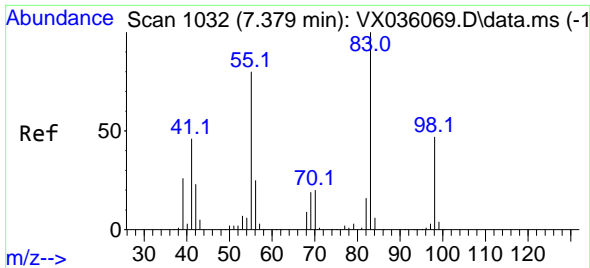


#25  
 Chloroform  
 Concen: 2.152 ug/L  
 RT: 5.086 min Scan# 656  
 Delta R.T. -0.006 min  
 Lab File: VX036080.D  
 Acq: 08 Jun 2023 19:02



Tgt Ion: 83 Resp: 9860  
 Ion Ratio Lower Upper  
 83 100  
 85 65.1 45.0 83.6

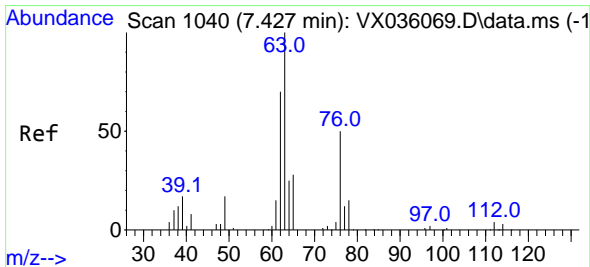
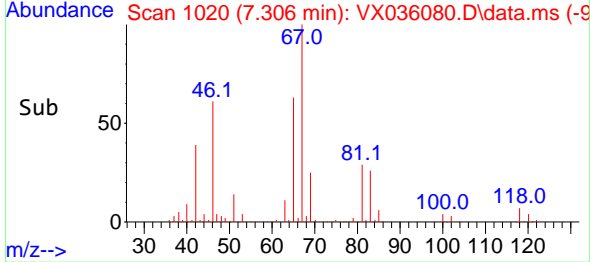
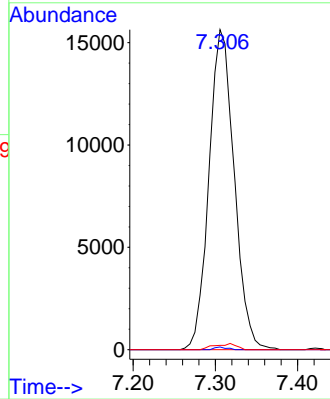
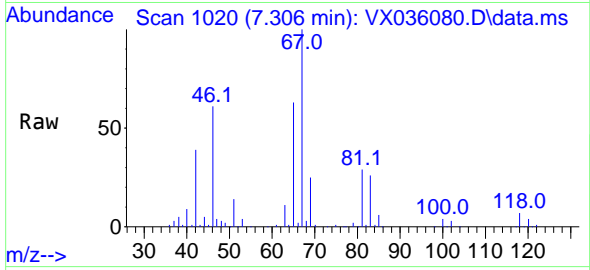




#35  
 Methylcyclohexane  
 Concen: 9.005 ug/L  
 RT: 7.306 min Scan# 1020  
 Delta R.T. -0.073 min  
 Lab File: VX036080.D  
 Acq: 08 Jun 2023 19:02

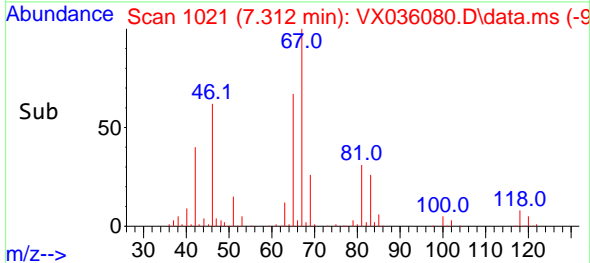
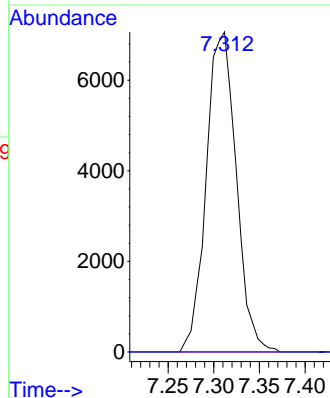
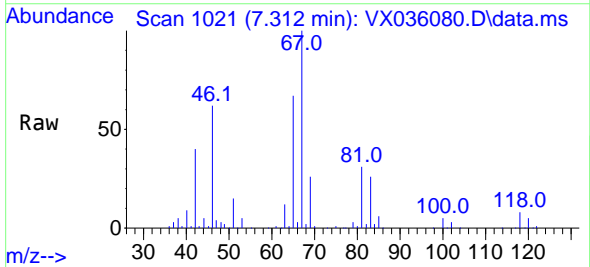
Instrument : MSVOA\_X  
 ClientSampleId : EZEN2

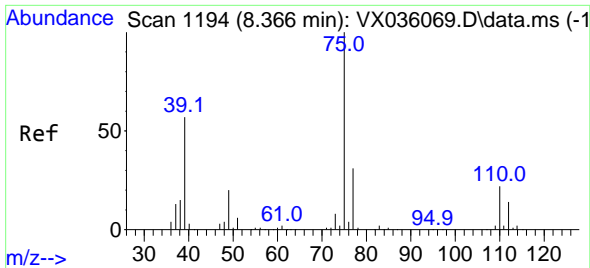
Tgt Ion: 83 Resp: 33341  
 Ion Ratio Lower Upper  
 83 100  
 55 0.4 65.4 98.2#  
 98 1.0 39.0 58.6#



#37  
 1,2-Dichloropropane  
 Concen: 6.571 ug/L  
 RT: 7.312 min Scan# 1021  
 Delta R.T. -0.116 min  
 Lab File: VX036080.D  
 Acq: 08 Jun 2023 19:02

Tgt Ion: 63 Resp: 16150  
 Ion Ratio Lower Upper  
 63 100  
 112 0.0 3.5 5.3#

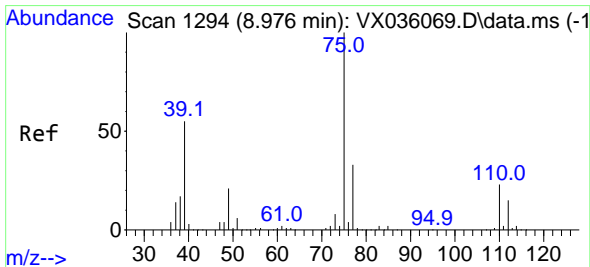
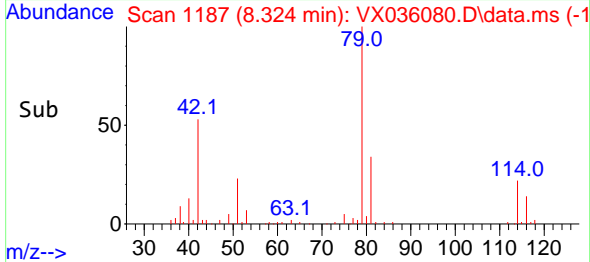
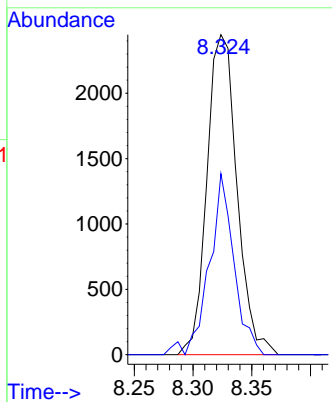
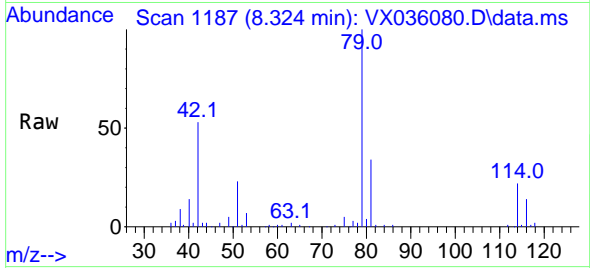




#39  
 cis-1,3-Dichloropropene  
 Concen: 1.135 ug/L  
 RT: 8.324 min Scan# 1187  
 Delta R.T. -0.042 min  
 Lab File: VX036080.D  
 Acq: 08 Jun 2023 19:02

Instrument : MSVOA\_X  
 ClientSampleId : EZEN2

Tgt Ion: 75 Resp: 4360  
 Ion Ratio Lower Upper  
 75 100  
 77 56.5 21.9 40.7#



#44  
 trans-1,3-Dichloropropene  
 Concen: 0.774 ug/L  
 RT: 8.946 min Scan# 1289  
 Delta R.T. -0.030 min  
 Lab File: VX036080.D  
 Acq: 08 Jun 2023 19:02

Tgt Ion: 75 Resp: 2782  
 Ion Ratio Lower Upper  
 75 100  
 77 36.6 22.0 41.0

