

Data Path : Z:\voasrv\HPCHEM1\MSVOA_X\Data\VX060921\
 Data File : VX022615.D
 Acq On : 09 Jun 2021 15:43
 Operator : JC/MD
 Sample : M2652-03
 Misc : 5.0mL/MSVOA_X/WATER
 ALS Vial : 13 Sample Multiplier: 1

Instrument :
 MSVOA_X
 ClientSampled :

Quant Time: Jun 10 05:43:07 2021
 Quant Method : Z:\voasrv\HPCHEM1\MSVOA_X\Method\82X060721W.M
 Quant Title : SW846 8260
 QLast Update : Mon Jun 07 14:27:50 2021
 Response via : Initial Calibration

Compound	R.T.	QIon	Response	Conc	Units	Dev(Min)

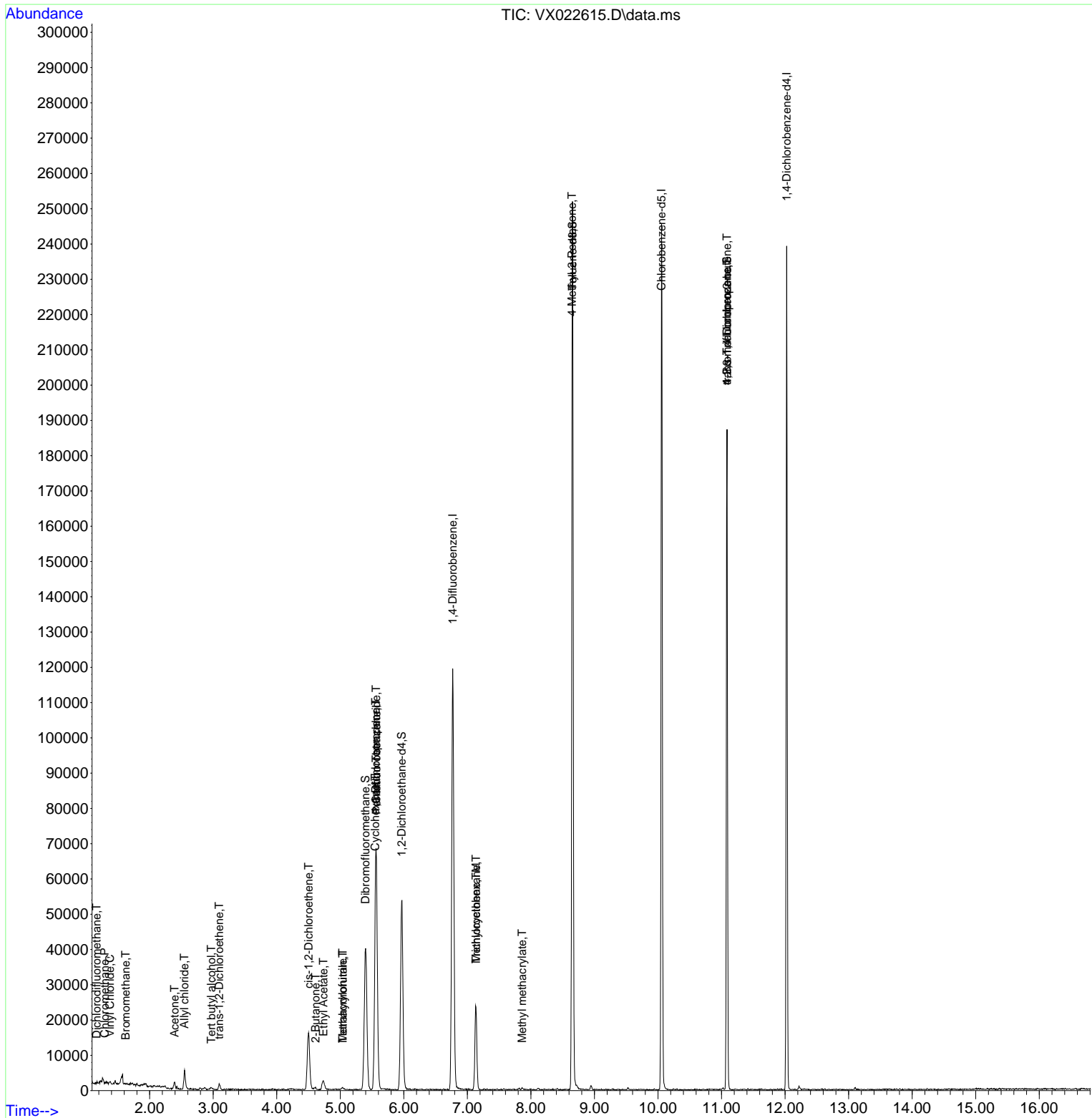
Internal Standards						
1) Pentafluorobenzene	5.568	168	57788	50.00	ug/l	0.00
34) 1,4-Difluorobenzene	6.769	114	118224	50.00	ug/l	0.00
63) Chlorobenzene-d5	10.055	117	104753	50.00	ug/l	0.00
72) 1,4-Dichlorobenzene-d4	12.024	152	41866	50.00	ug/l	0.00
System Monitoring Compounds						
33) 1,2-Dichloroethane-d4	5.964	65	49686	48.36	ug/l	0.00
Spiked Amount	50.000	Range 78 - 117	Recovery =	96.72%		
35) Dibromofluoromethane	5.398	113	35085	47.43	ug/l	0.00
Spiked Amount	50.000	Range 75 - 124	Recovery =	94.86%		
50) Toluene-d8	8.653	98	144032	48.80	ug/l	0.00
Spiked Amount	50.000	Range 92 - 112	Recovery =	97.60%		
62) 4-Bromofluorobenzene	11.086	95	50570	46.10	ug/l	0.00
Spiked Amount	50.000	Range 83 - 123	Recovery =	92.20%		
Target Compounds						
						Qvalue
2) Dichlorodifluoromethane	1.167	85	197	0.29	ug/l #	42
3) Chloromethane	1.295	50	251	0.31	ug/l #	42
4) Vinyl Chloride	1.374	62	484	0.61	ug/l	94
5) Bromomethane	1.624	94	85	0.20	ug/l #	77
11) Tert butyl alcohol	2.971	59	676	2.93	ug/l #	73
14) Allyl chloride	2.544	41	533	0.40	ug/l #	72
16) Acetone	2.392	43	2218	4.80	ug/l #	88
21) trans-1,2-Dichloroethene	3.093	96	645	0.78	ug/l	93
25) 2-Butanone	4.611	43	177	0.23	ug/l #	45
27) cis-1,2-Dichloroethene	4.501	96	10090	10.41	ug/l	91
29) Tetrahydrofuran	5.038	42	402	0.90	ug/l #	73
31) Cyclohexane	5.550	56	1782	1.47	ug/l #	55
36) 1,1-Dichloropropene	5.556	75	5952	5.20	ug/l #	47
37) Ethyl Acetate	4.733	43	4606	3.14	ug/l	98
38) Carbon Tetrachloride	5.562	117	6789	8.21	ug/l #	17
39) Methylcyclohexane	7.135	83	34	1.87	ug/l #	19
41) Methacrylonitrile	5.038	41	245	0.30	ug/l #	19
44) Trichloroethene	7.135	130	8544	10.26	ug/l	98
48) Methyl methacrylate	7.860	41	236	0.21	ug/l #	4
51) 4-Methyl-2-Pentanone	8.647	43	740	0.50	ug/l #	1
76) 1,2,3-Trichloropropane	11.086	75	28314	26.11	ug/l #	38
81) trans-1,4-Dichloro-2-b...	11.086	75	28314	64.35	ug/l #	12

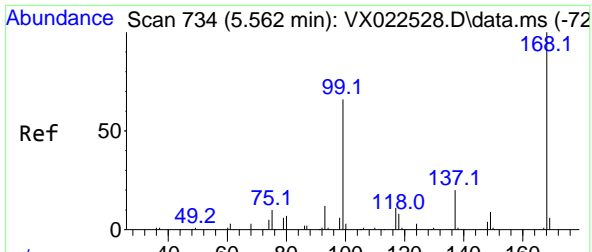
(#) = qualifier out of range (m) = manual integration (+) = signals summed

Data Path : Z:\voasrv\HPCHEM1\MSVOA_X\Data\VX060921\
 Data File : VX022615.D
 Acq On : 09 Jun 2021 15:43
 Operator : JC/MD
 Sample : M2652-03
 Misc : 5.0mL/MSVOA_X/WATER
 ALS Vial : 13 Sample Multiplier: 1

Instrument :
 MSVOA_X
 Client Sampled :

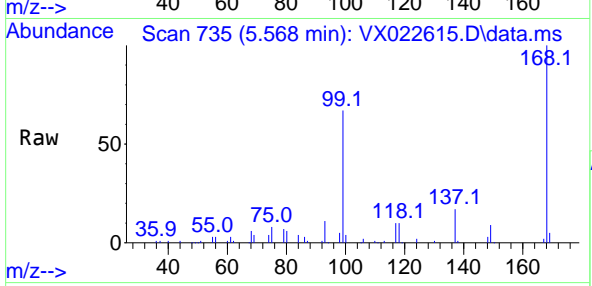
Quant Time: Jun 10 05:43:07 2021
 Quant Method : Z:\voasrv\HPCHEM1\MSVOA_X\Method\82X060721W.M
 Quant Title : SW846 8260
 QLast Update : Mon Jun 07 14:27:50 2021
 Response via : Initial Calibration



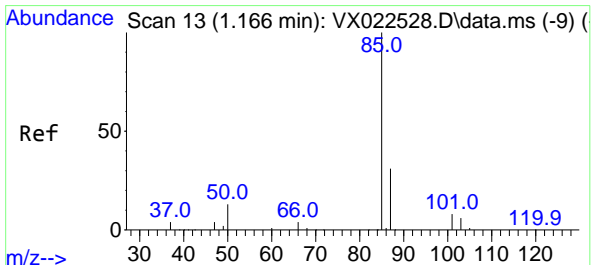
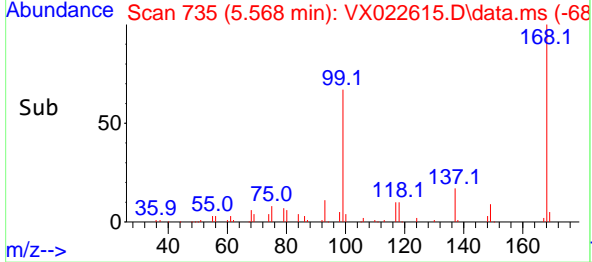
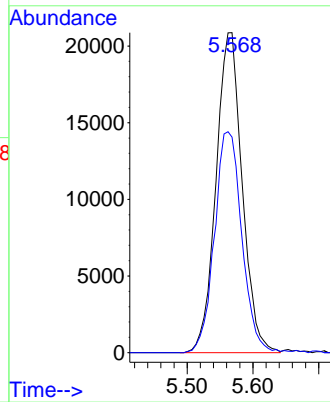


#1
 Pentafluorobenzene
 Concen: 50.00 ug/l
 RT: 5.568 min Scan# 735
 Delta R.T. 0.006 min
 Lab File: VX022615.D
 Acq: 09 Jun 2021 15:43

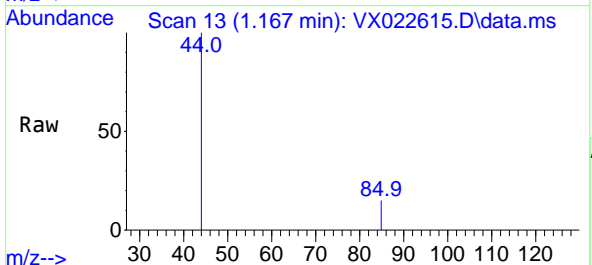
Instrument :
 MSVOA_X
 ClientSampled :



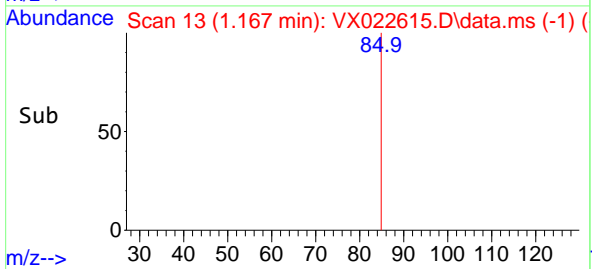
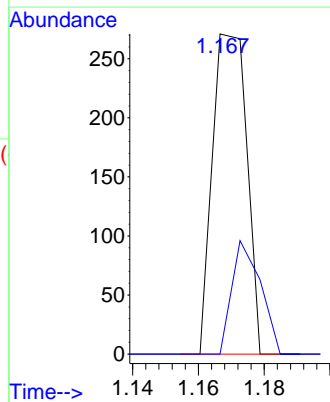
Tgt Ion:168 Resp: 57788
 Ion Ratio Lower Upper
 168 100
 99 67.3 45.8 68.6

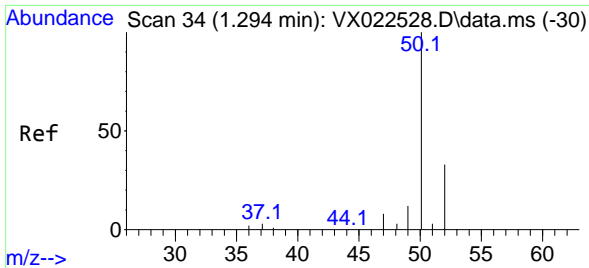


#2
 Dichlorodifluoromethane
 Concen: 0.29 ug/l
 RT: 1.167 min Scan# 13
 Delta R.T. 0.001 min
 Lab File: VX022615.D
 Acq: 09 Jun 2021 15:43



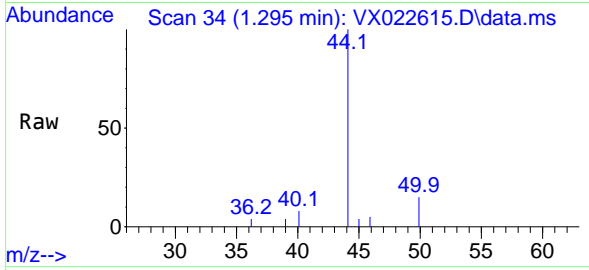
Tgt Ion: 85 Resp: 197
 Ion Ratio Lower Upper
 85 100
 87 0.0 16.4 49.2#



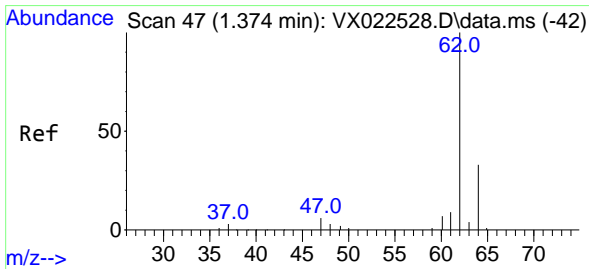
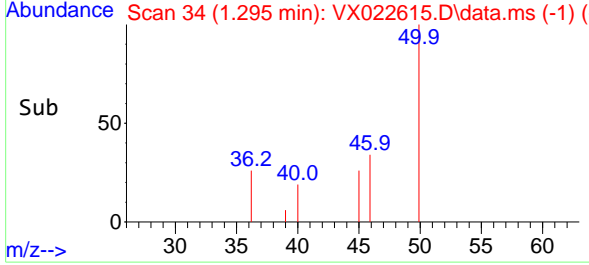
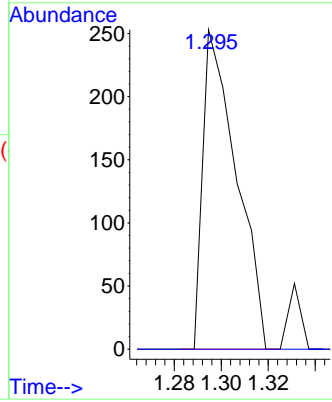


#3
 Chloromethane
 Concen: 0.31 ug/l
 RT: 1.295 min Scan# 34
 Delta R.T. 0.001 min
 Lab File: VX022615.D
 Acq: 09 Jun 2021 15:43

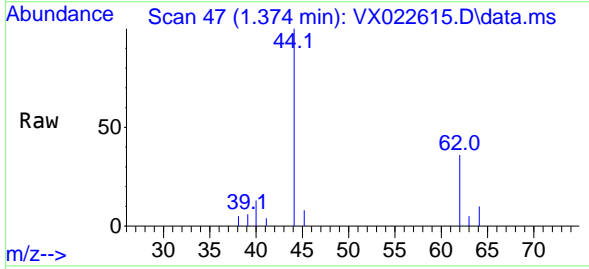
Instrument :
 MSVOA_X
 ClientSampled :



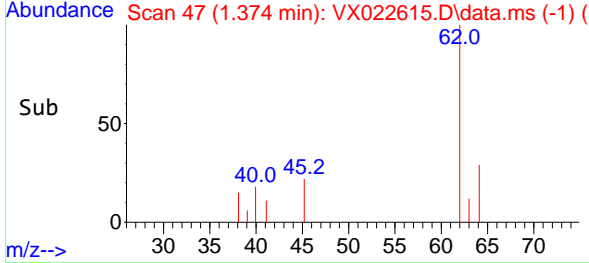
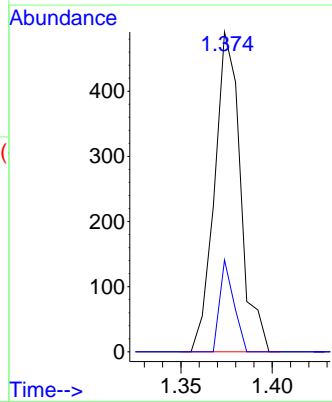
Tgt Ion: 50 Resp: 251
 Ion Ratio Lower Upper
 50 100
 52 0.0 26.4 39.6#

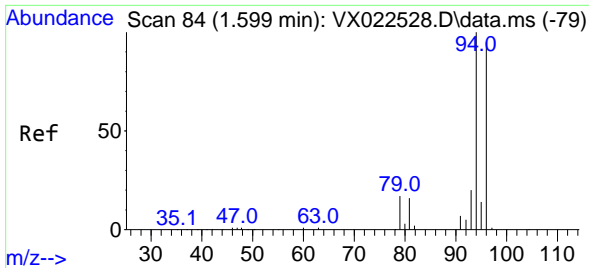


#4
 Vinyl Chloride
 Concen: 0.61 ug/l
 RT: 1.374 min Scan# 47
 Delta R.T. -0.000 min
 Lab File: VX022615.D
 Acq: 09 Jun 2021 15:43



Tgt Ion: 62 Resp: 484
 Ion Ratio Lower Upper
 62 100
 64 28.7 25.7 38.5

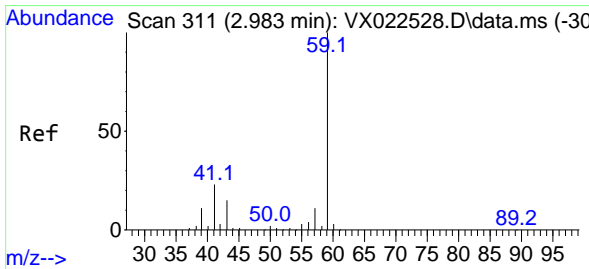
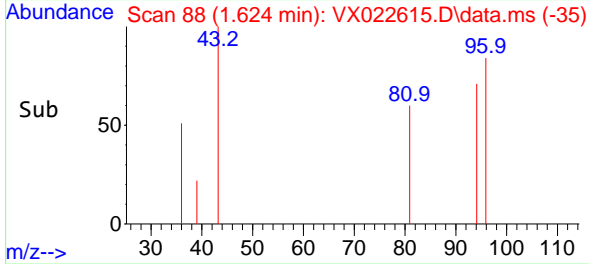
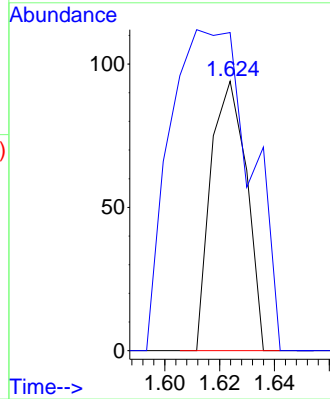
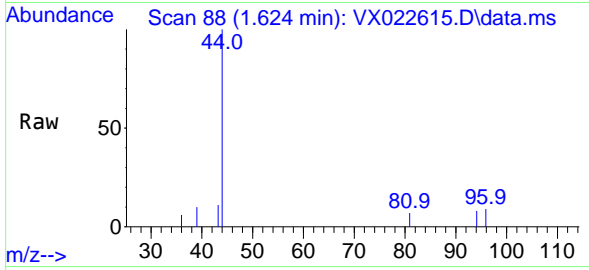




#5
 Bromomethane
 Concen: 0.20 ug/l
 RT: 1.624 min Scan# 88
 Delta R.T. 0.025 min
 Lab File: VX022615.D
 Acq: 09 Jun 2021 15:43

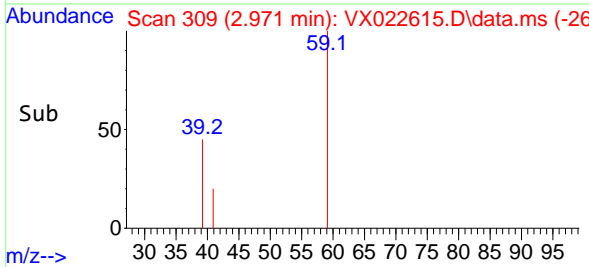
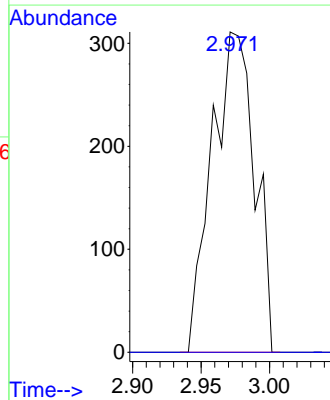
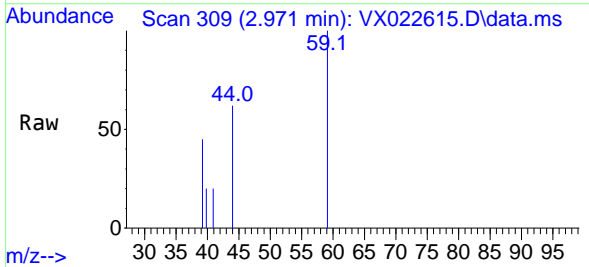
Instrument :
 MSVOA_X
 ClientSampled :

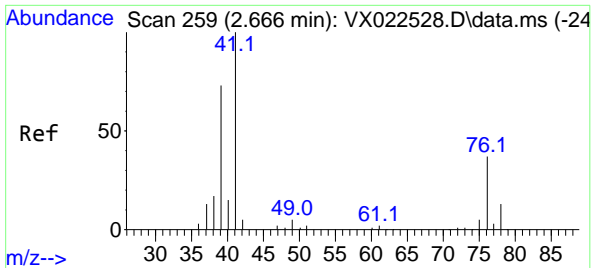
Tgt Ion: 94 Resp: 85
 Ion Ratio Lower Upper
 94 100
 96 118.1 76.4 114.6#



#11
 Tert butyl alcohol
 Concen: 2.93 ug/l
 RT: 2.971 min Scan# 309
 Delta R.T. -0.012 min
 Lab File: VX022615.D
 Acq: 09 Jun 2021 15:43

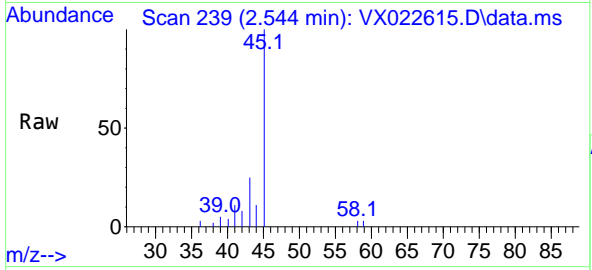
Tgt Ion: 59 Resp: 676
 Ion Ratio Lower Upper
 59 100
 57 0.0 7.8 11.8#





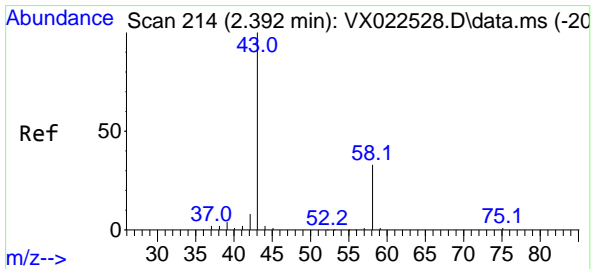
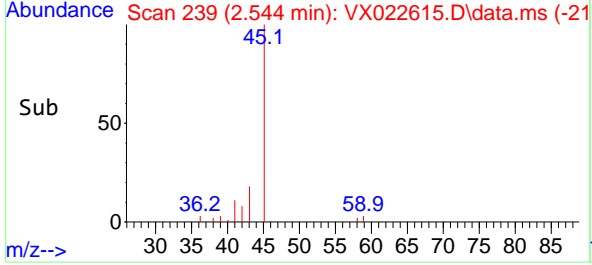
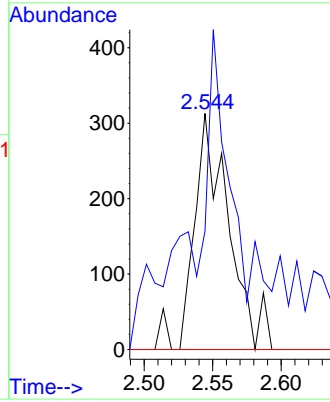
#14
 Allyl chloride
 Concen: 0.40 ug/l
 RT: 2.544 min Scan# 239
 Delta R.T. -0.122 min
 Lab File: VX022615.D
 Acq: 09 Jun 2021 15:43

Instrument :
 MSVOA_X
 ClientSampled :



Tgt Ion: 41 Resp: 533

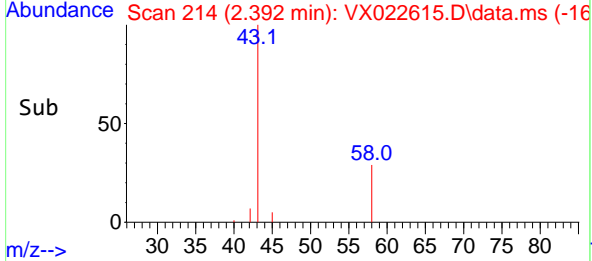
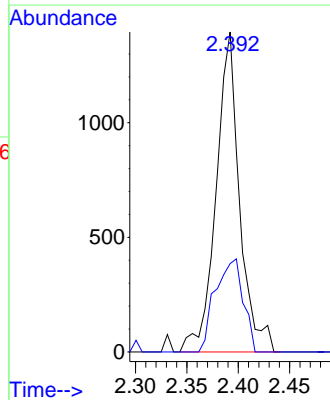
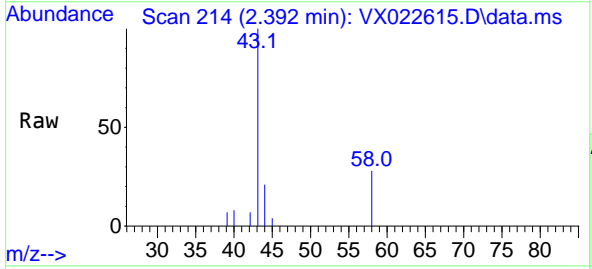
Ion	Ratio	Lower	Upper
41	100		
39	69.8	51.6	77.4
76	0.0	30.5	45.7#

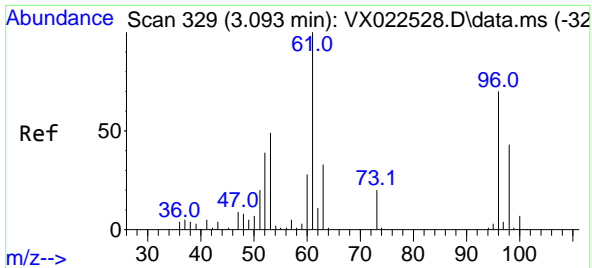


#16
 Acetone
 Concen: 4.80 ug/l
 RT: 2.392 min Scan# 214
 Delta R.T. -0.000 min
 Lab File: VX022615.D
 Acq: 09 Jun 2021 15:43

Tgt Ion: 43 Resp: 2218

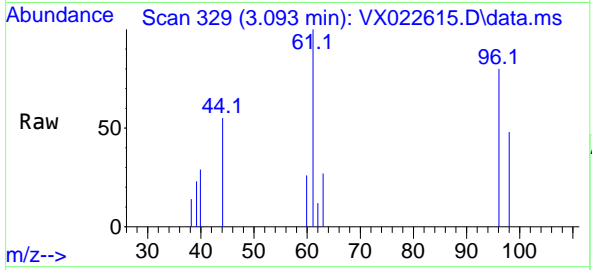
Ion	Ratio	Lower	Upper
43	100		
58	27.6	27.8	41.8#



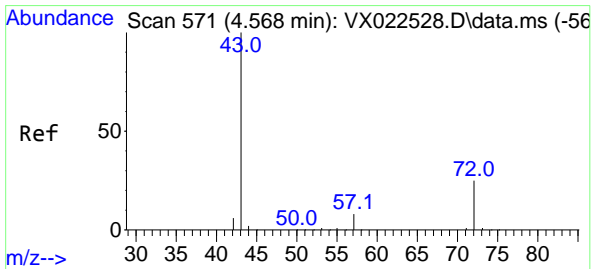
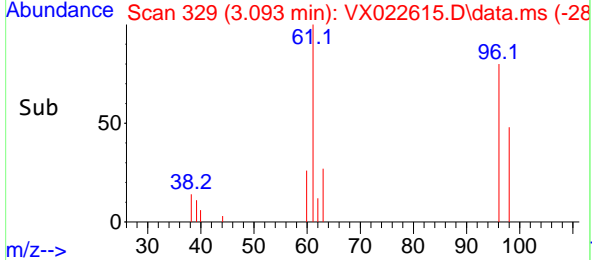
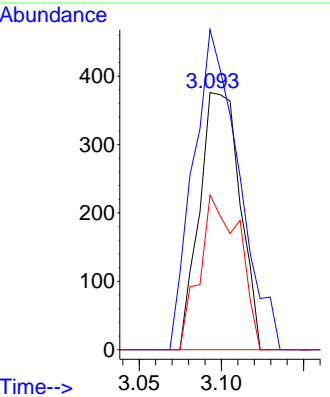


#21
 trans-1,2-Dichloroethene
 Concen: 0.78 ug/l
 RT: 3.093 min Scan# 329
 Delta R.T. 0.000 min
 Lab File: VX022615.D
 Acq: 09 Jun 2021 15:43

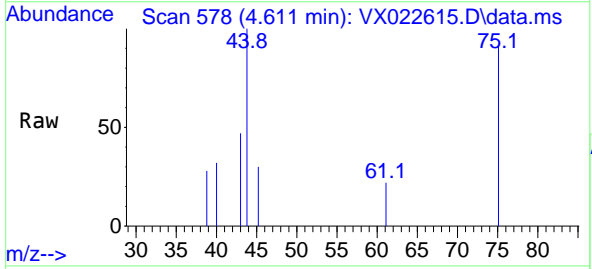
Instrument : MSVOA_X
 ClientSampled :



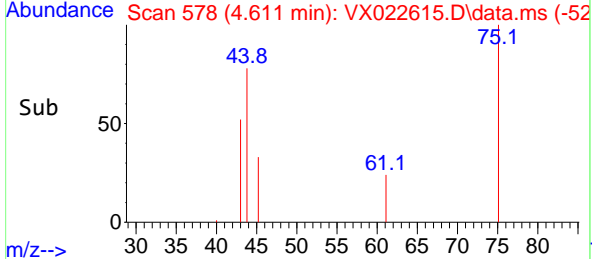
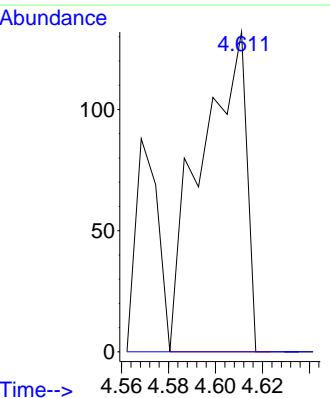
Tgt Ion: 96 Resp: 645
 Ion Ratio Lower Upper
 96 100
 61 124.5 107.7 161.5
 98 60.1 50.4 75.6

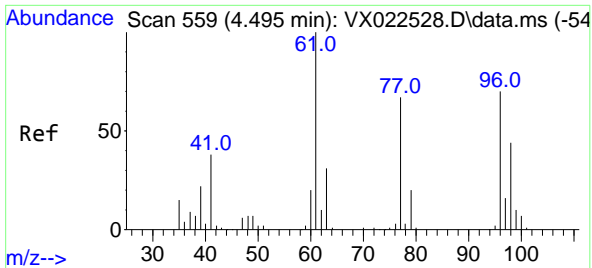


#25
 2-Butanone
 Concen: 0.23 ug/l
 RT: 4.611 min Scan# 578
 Delta R.T. 0.043 min
 Lab File: VX022615.D
 Acq: 09 Jun 2021 15:43



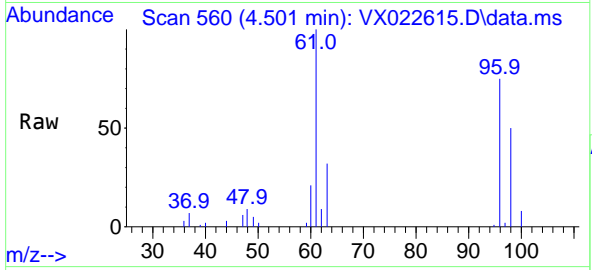
Tgt Ion: 43 Resp: 177
 Ion Ratio Lower Upper
 43 100
 72 0.0 23.7 35.5#





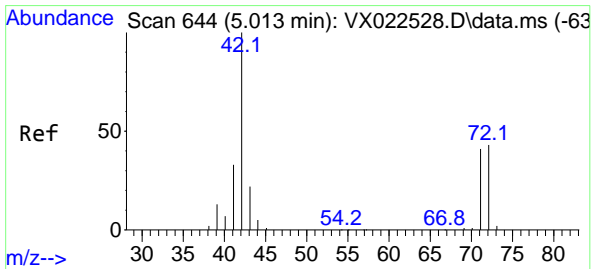
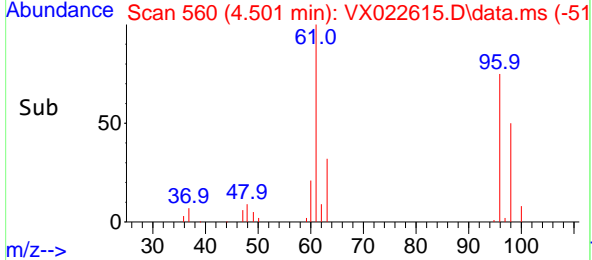
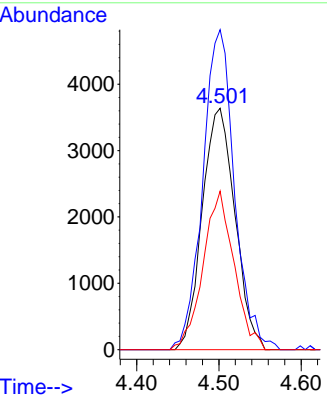
#27
 cis-1,2-Dichloroethene
 Concen: 10.41 ug/l
 RT: 4.501 min Scan# 560
 Delta R.T. 0.006 min
 Lab File: VX022615.D
 Acq: 09 Jun 2021 15:43

Instrument :
 MSVOA_X
 ClientSampled :

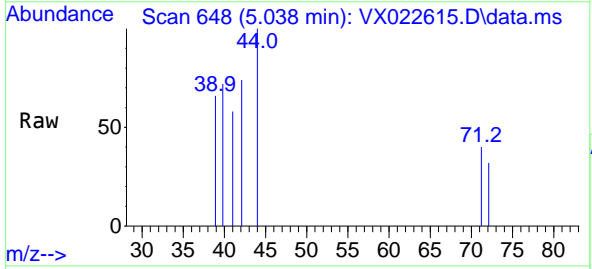


Tgt Ion: 96 Resp: 10090

Ion	Ratio	Lower	Upper
96	100		
61	128.0	0.0	285.6
98	62.0	0.0	129.6

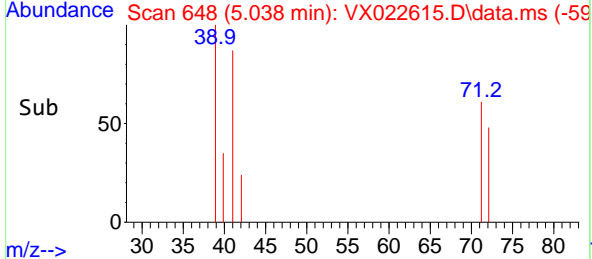
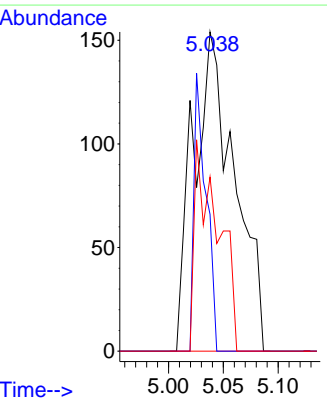


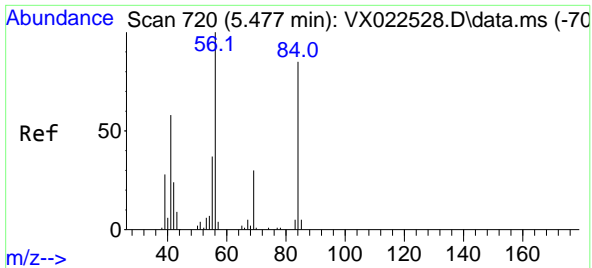
#29
 Tetrahydrofuran
 Concen: 0.90 ug/l
 RT: 5.038 min Scan# 648
 Delta R.T. 0.025 min
 Lab File: VX022615.D
 Acq: 09 Jun 2021 15:43



Tgt Ion: 42 Resp: 402

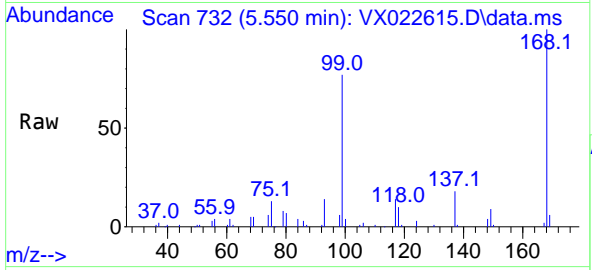
Ion	Ratio	Lower	Upper
42	100		
72	25.6	41.7	62.5#
71	37.8	38.4	57.6#





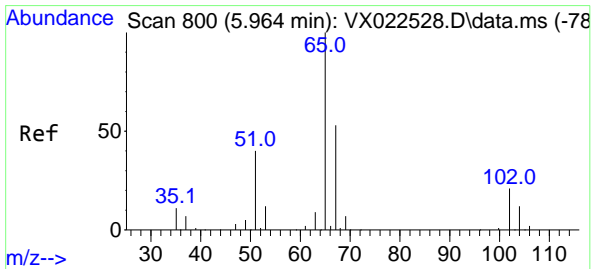
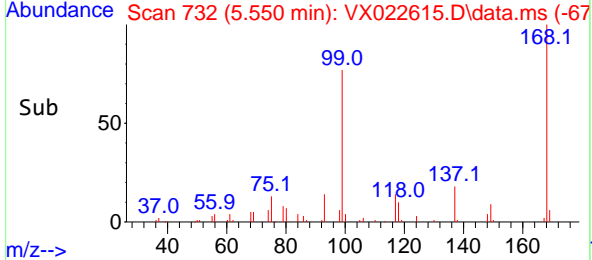
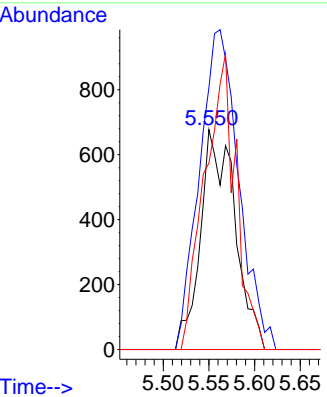
#31
 Cyclohexane
 Concen: 1.47 ug/l
 RT: 5.550 min Scan# 732
 Delta R.T. 0.073 min
 Lab File: VX022615.D
 Acq: 09 Jun 2021 15:43

Instrument :
 MSVOA_X
 ClientSampled :



Tgt Ion: 56 Resp: 1782

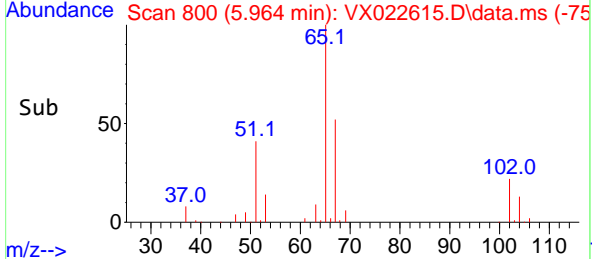
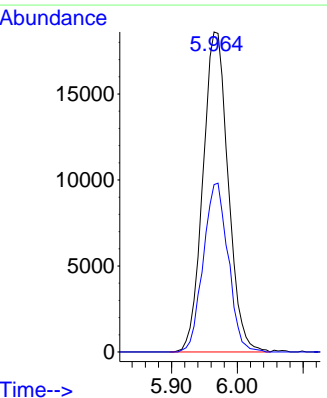
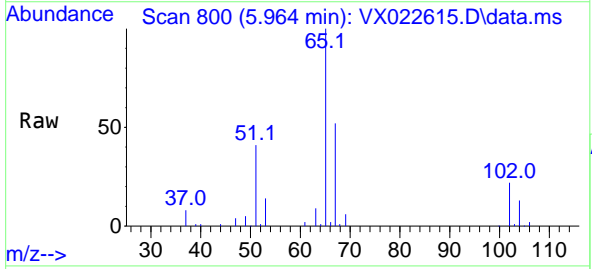
Ion	Ratio	Lower	Upper
56	100		
69	119.1	25.3	37.9#
84	84.8	71.4	107.0

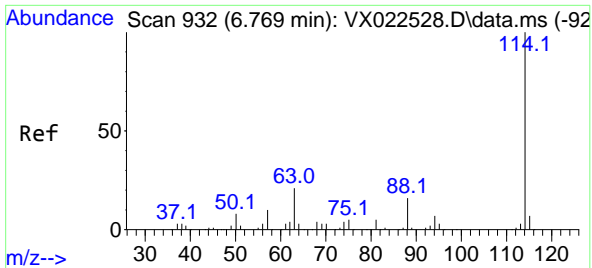


#33
 1,2-Dichloroethane-d4
 Concen: 48.36 ug/l
 RT: 5.964 min Scan# 800
 Delta R.T. 0.000 min
 Lab File: VX022615.D
 Acq: 09 Jun 2021 15:43

Tgt Ion: 65 Resp: 49686

Ion	Ratio	Lower	Upper
65	100		
67	52.0	0.0	105.4



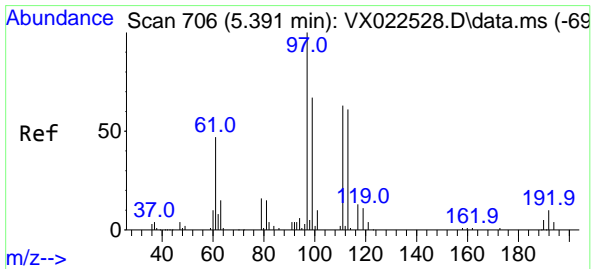
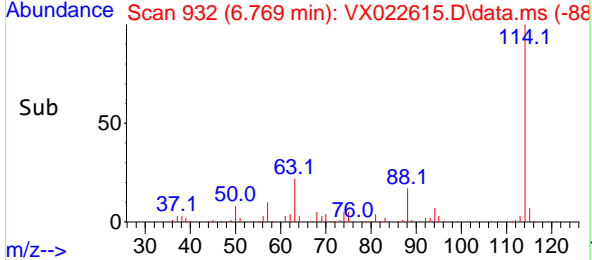
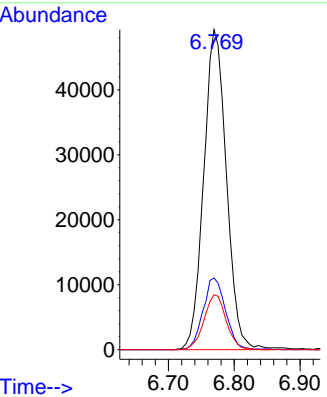
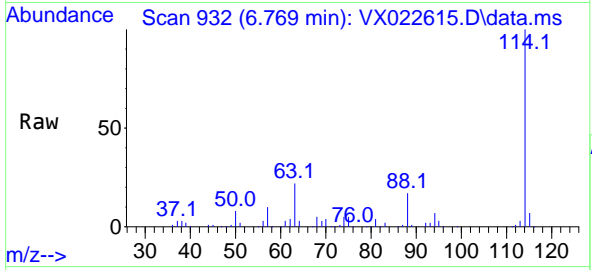


#34
 1,4-Difluorobenzene
 Concen: 50.00 ug/l
 RT: 6.769 min Scan# 932
 Delta R.T. 0.000 min
 Lab File: VX022615.D
 Acq: 09 Jun 2021 15:43

Instrument :
 MSVOA_X
 ClientSampled :

Tgt Ion:114 Resp: 118224

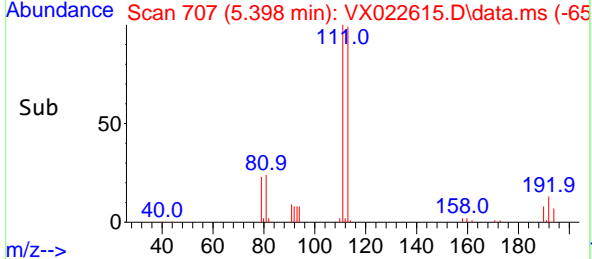
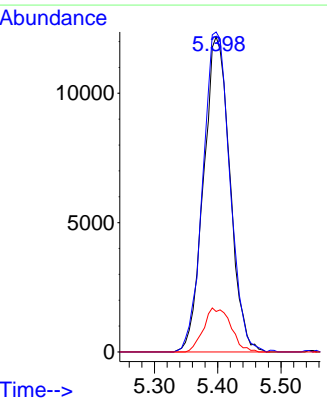
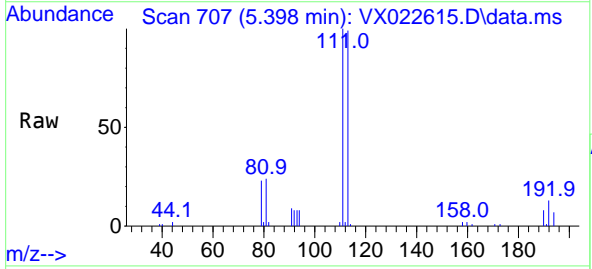
Ion	Ratio	Lower	Upper
114	100		
63	22.4	0.0	40.8
88	17.2	0.0	32.8

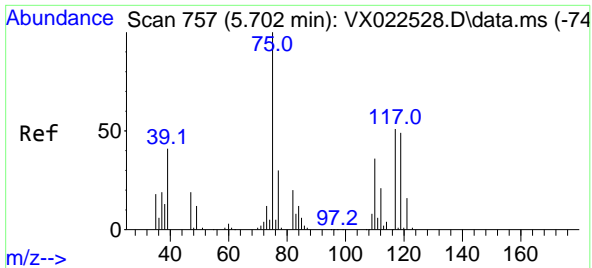


#35
 Dibromofluoromethane
 Concen: 47.43 ug/l
 RT: 5.398 min Scan# 707
 Delta R.T. 0.006 min
 Lab File: VX022615.D
 Acq: 09 Jun 2021 15:43

Tgt Ion:113 Resp: 35085

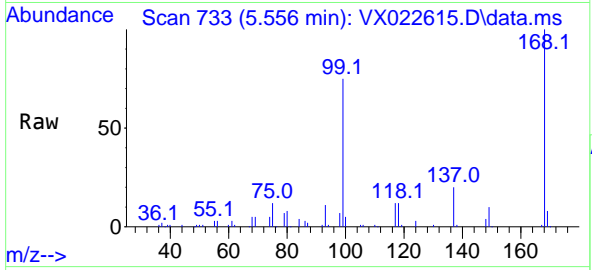
Ion	Ratio	Lower	Upper
113	100		
111	103.8	81.9	122.9
192	14.5	16.7	25.1#





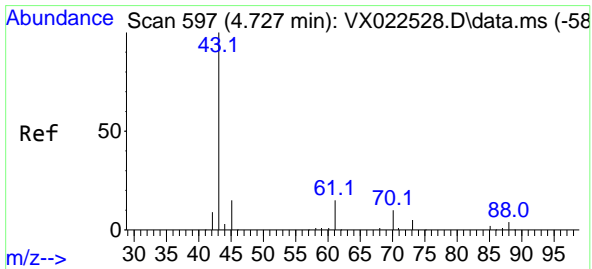
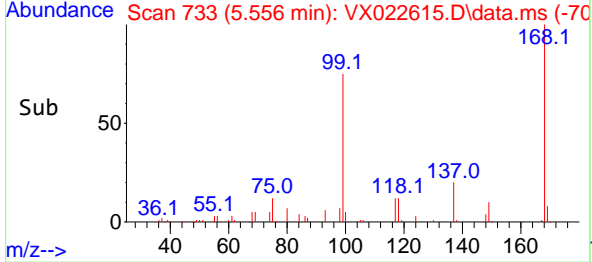
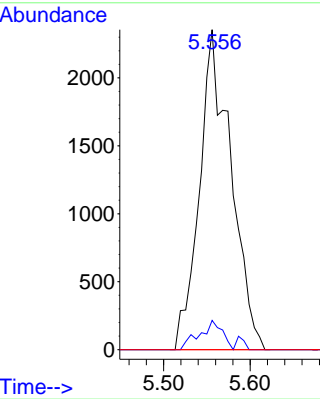
#36
 1,1-Dichloropropene
 Concen: 5.20 ug/l
 RT: 5.556 min Scan# 733
 Delta R.T. -0.146 min
 Lab File: VX022615.D
 Acq: 09 Jun 2021 15:43

Instrument :
 MSVOA_X
 ClientSampled :

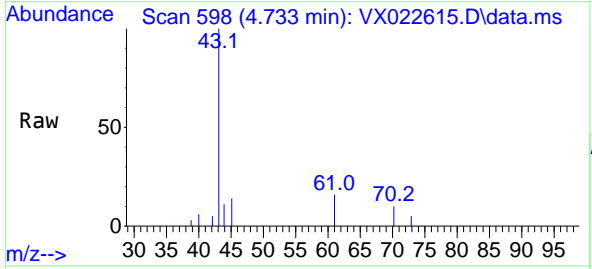


Tgt Ion: 75 Resp: 5952

Ion	Ratio	Lower	Upper
75	100		
110	6.6	18.1	54.4#
77	0.0	25.3	37.9#

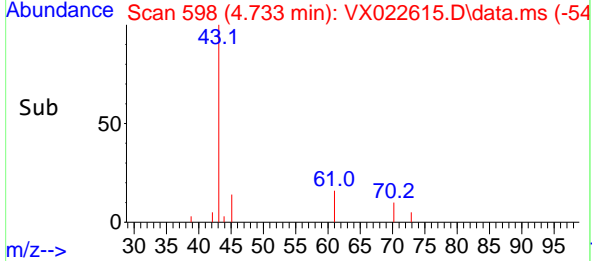
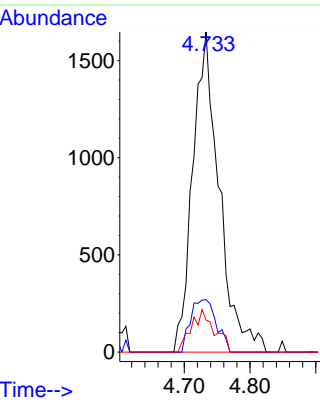


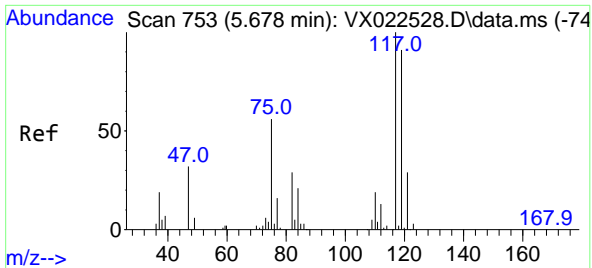
#37
 Ethyl Acetate
 Concen: 3.14 ug/l
 RT: 4.733 min Scan# 598
 Delta R.T. 0.006 min
 Lab File: VX022615.D
 Acq: 09 Jun 2021 15:43



Tgt Ion: 43 Resp: 4606

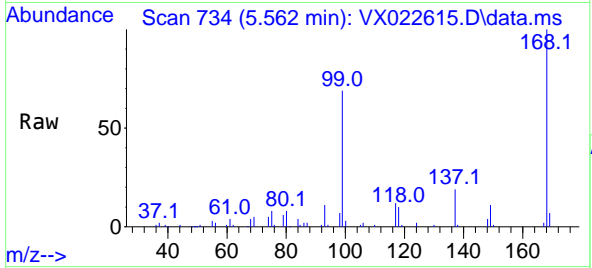
Ion	Ratio	Lower	Upper
43	100		
61	16.0	12.8	19.2
70	11.6	10.5	15.7



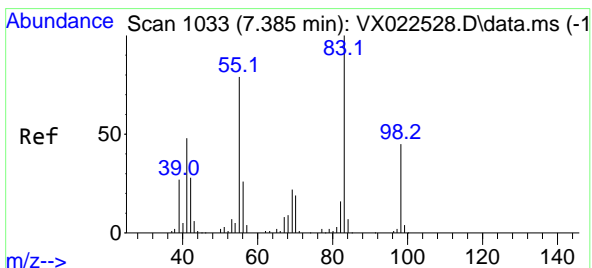
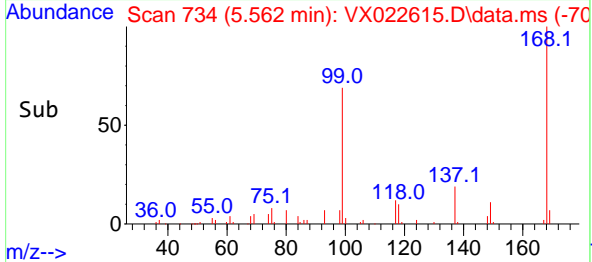
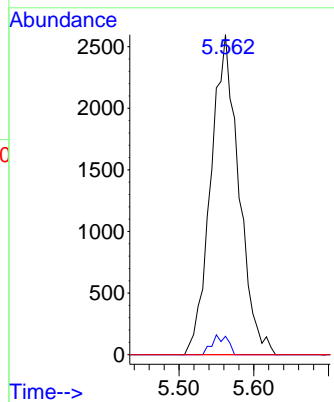


#38
 Carbon Tetrachloride
 Concen: 8.21 ug/l
 RT: 5.562 min Scan# 734
 Delta R.T. -0.116 min
 Lab File: VX022615.D
 Acq: 09 Jun 2021 15:43

Instrument :
 MSVOA_X
 ClientSampled :

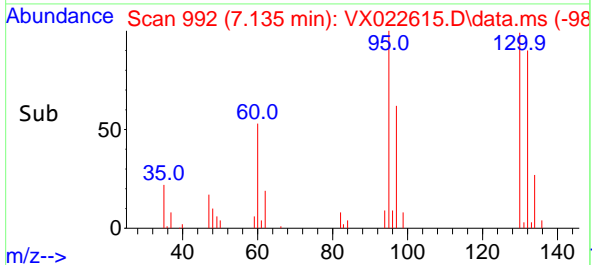
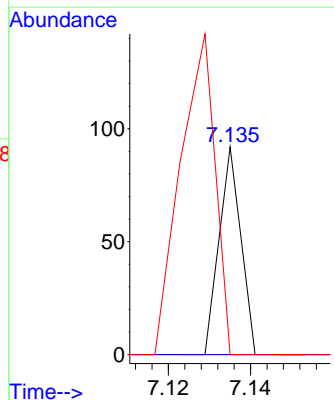
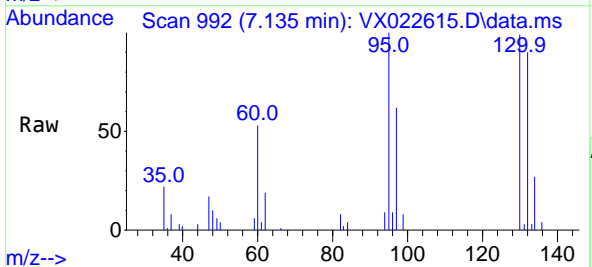


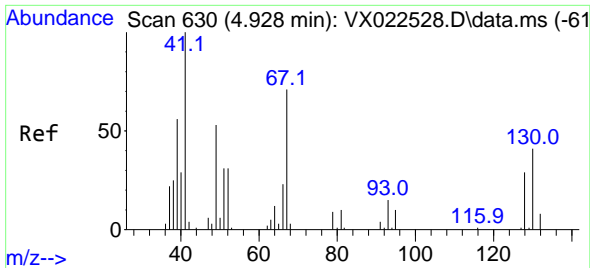
Tgt Ion:117 Resp: 6789
 Ion Ratio Lower Upper
 117 100
 119 5.7 76.2 114.2#
 121 0.0 24.8 37.2#



#39
 Methylcyclohexane
 Concen: 1.87 ug/l
 RT: 7.135 min Scan# 992
 Delta R.T. -0.250 min
 Lab File: VX022615.D
 Acq: 09 Jun 2021 15:43

Tgt Ion: 83 Resp: 34
 Ion Ratio Lower Upper
 83 100
 55 0.0 58.9 88.3#
 98 0.0 38.1 57.1#

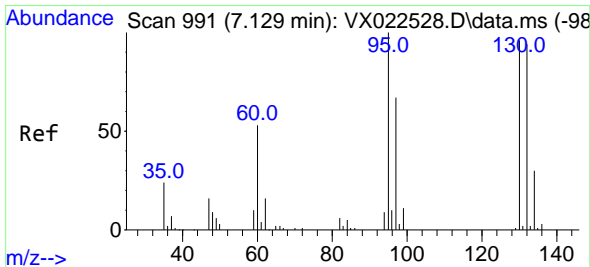
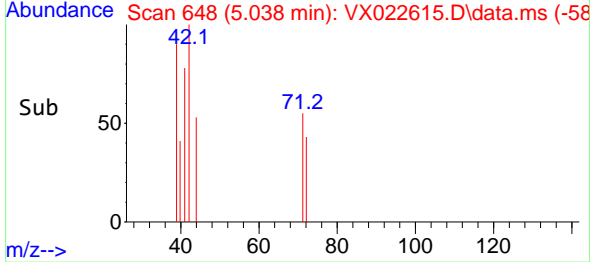
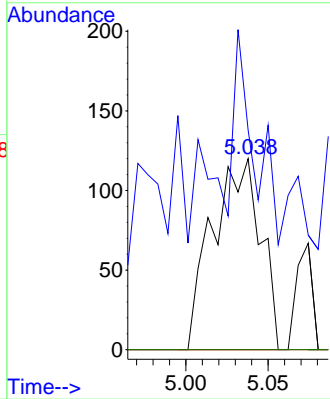
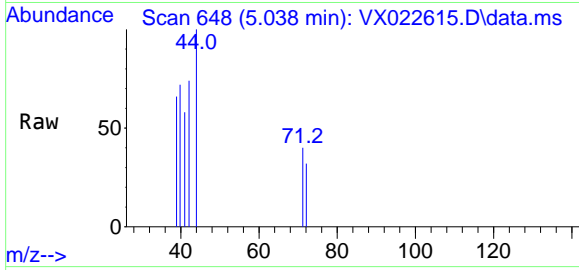




#41
 Methacrylonitrile
 Concen: 0.30 ug/l
 RT: 5.038 min Scan# 648
 Delta R.T. 0.110 min
 Lab File: VX022615.D
 Acq: 09 Jun 2021 15:43

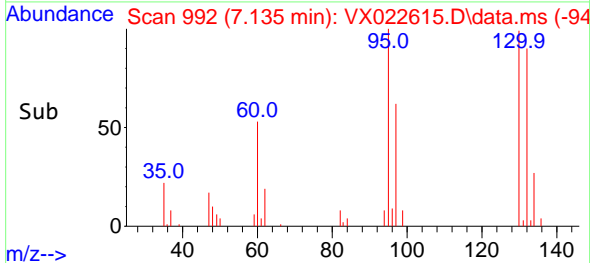
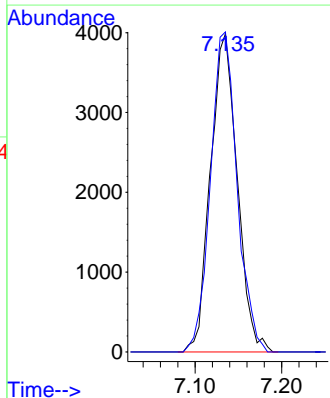
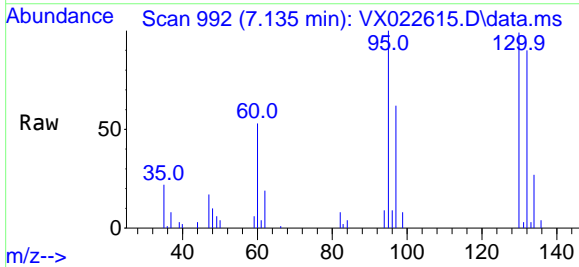
Instrument :
 MSVOA_X
 ClientSampled :

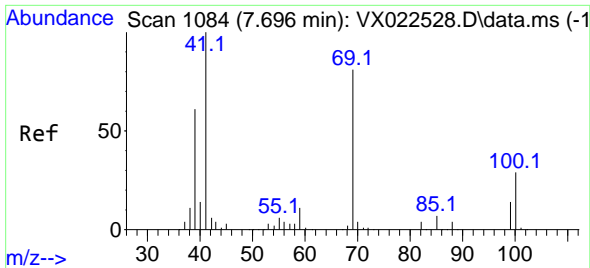
Tgt Ion	Ratio	Lower	Upper
41	100		
39	110.2	42.5	63.7#
67	0.0	65.0	97.6#
52	0.0	25.3	37.9#



#44
 Trichloroethene
 Concen: 10.26 ug/l
 RT: 7.135 min Scan# 992
 Delta R.T. 0.006 min
 Lab File: VX022615.D
 Acq: 09 Jun 2021 15:43

Tgt Ion	Ratio	Lower	Upper
130	100		
95	100.5	0.0	198.0

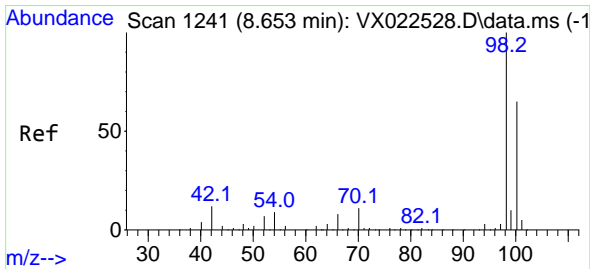
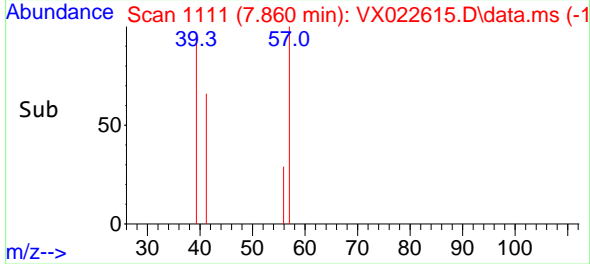
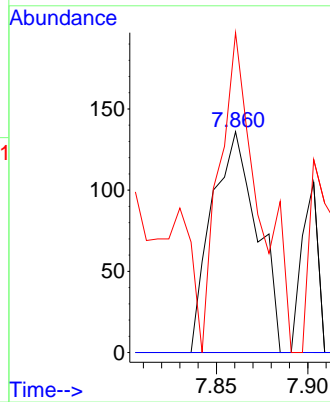
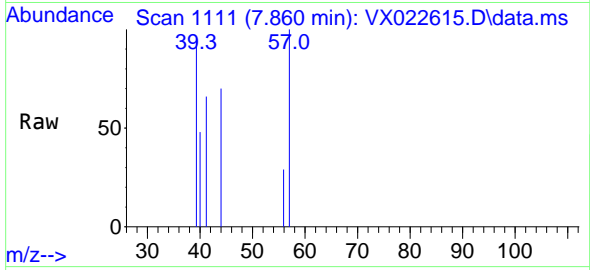




#48
 Methyl methacrylate
 Concen: 0.21 ug/l
 RT: 7.860 min Scan# 1111
 Delta R.T. 0.164 min
 Lab File: VX022615.D
 Acq: 09 Jun 2021 15:43

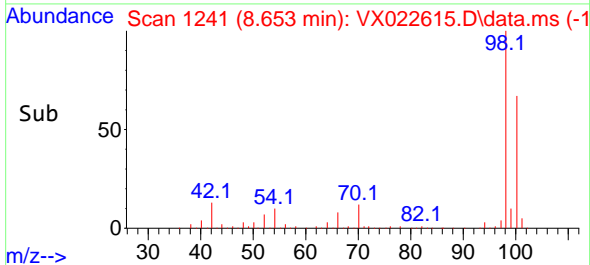
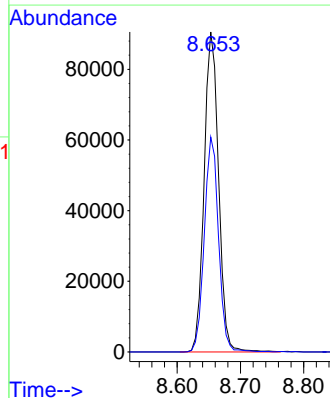
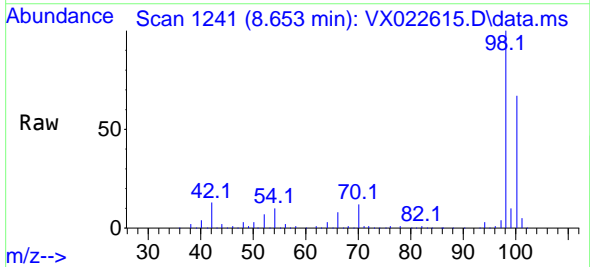
Instrument :
 MSVOA_X
 ClientSampled :

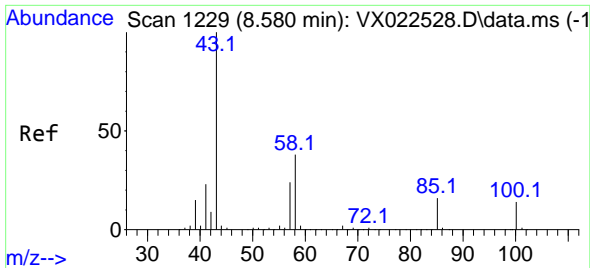
Tgt Ion: 41 Resp: 236
 Ion Ratio Lower Upper
 41 100
 69 0.0 76.0 114.0#
 39 124.2 44.6 67.0#



#50
 Toluene-d8
 Concen: 48.80 ug/l
 RT: 8.653 min Scan# 1241
 Delta R.T. 0.000 min
 Lab File: VX022615.D
 Acq: 09 Jun 2021 15:43

Tgt Ion: 98 Resp: 144032
 Ion Ratio Lower Upper
 98 100
 100 66.3 51.9 77.9

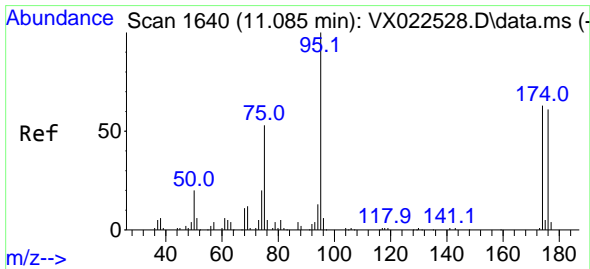
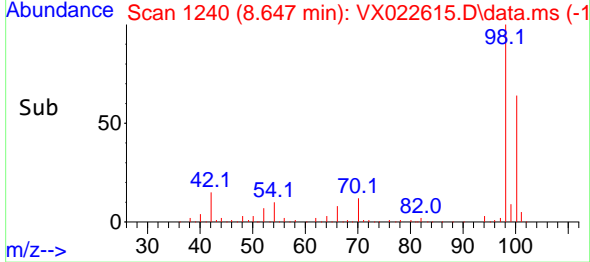
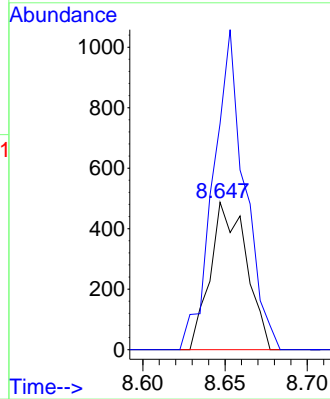
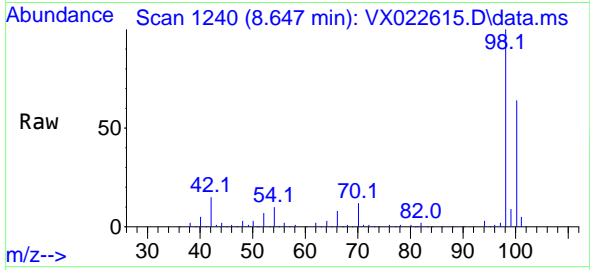




#51
 4-Methyl-2-Pentanone
 Concen: 0.50 ug/l
 RT: 8.647 min Scan# 1240
 Delta R.T. 0.067 min
 Lab File: VX022615.D
 Acq: 09 Jun 2021 15:43

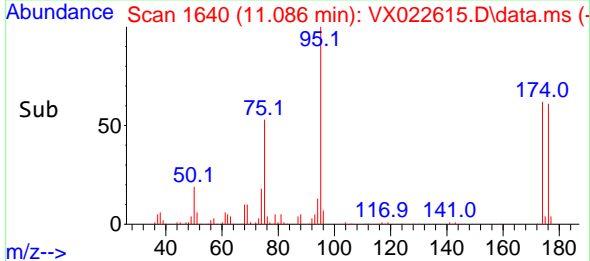
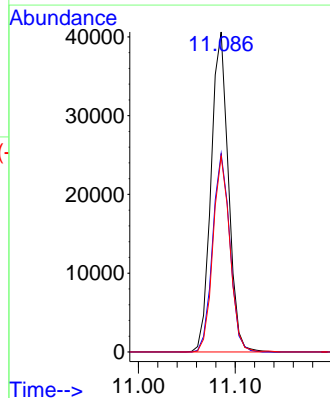
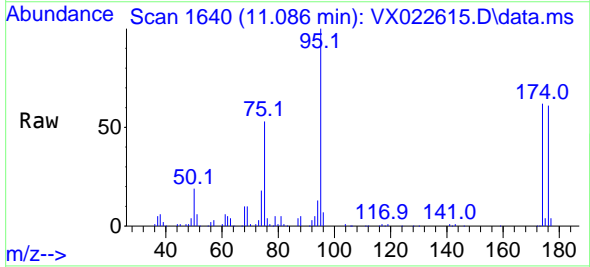
Instrument :
 MSVOA_X
 ClientSampled :

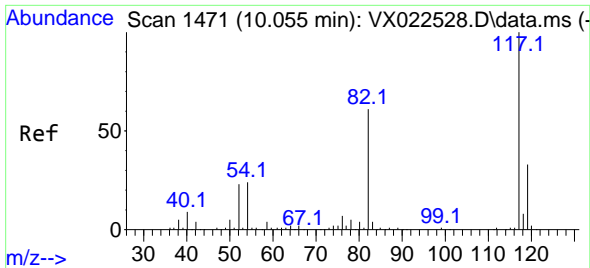
Tgt Ion: 43 Resp: 740
 Ion Ratio Lower Upper
 43 100
 58 191.2 35.4 53.0#



#62
 4-Bromofluorobenzene
 Concen: 46.10 ug/l
 RT: 11.086 min Scan# 1640
 Delta R.T. 0.001 min
 Lab File: VX022615.D
 Acq: 09 Jun 2021 15:43

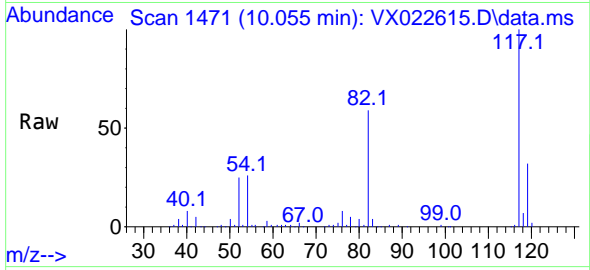
Tgt Ion: 95 Resp: 50570
 Ion Ratio Lower Upper
 95 100
 174 61.6 0.0 154.6
 176 59.8 0.0 155.8



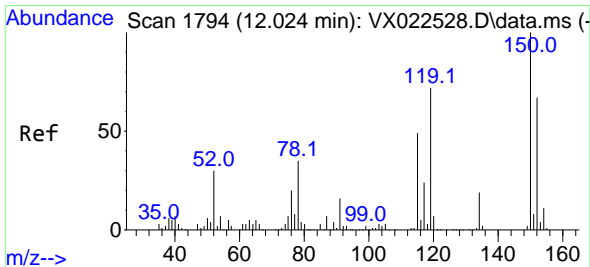
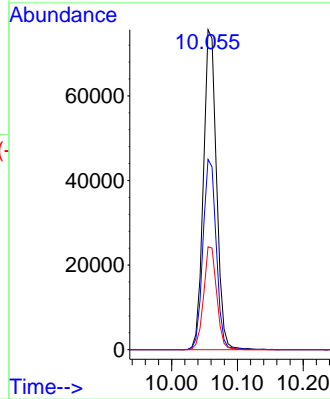
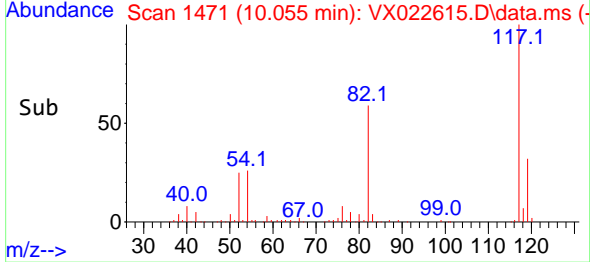


#63
 Chlorobenzene-d5
 Concen: 50.00 ug/l
 RT: 10.055 min Scan# 1471
 Delta R.T. 0.000 min
 Lab File: VX022615.D
 Acq: 09 Jun 2021 15:43

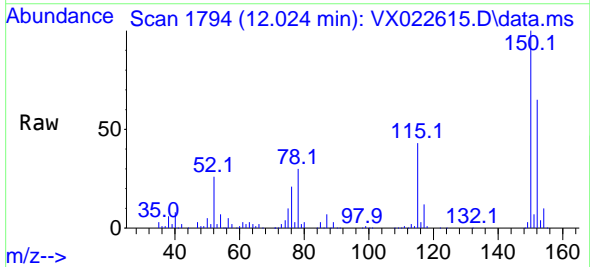
Instrument :
 MSVOA_X
 ClientSampled :



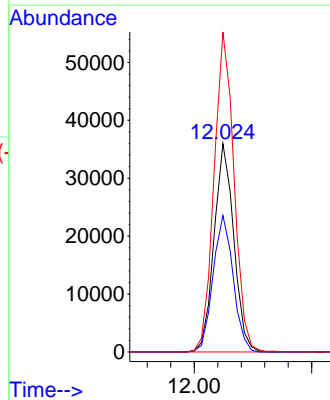
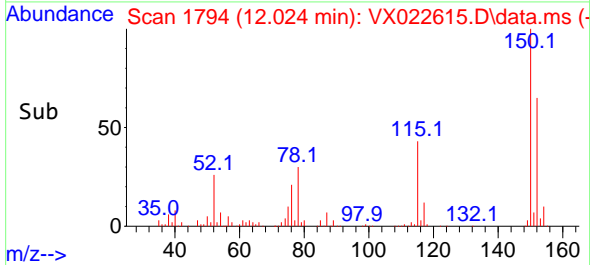
Tgt Ion:117 Resp: 104753
 Ion Ratio Lower Upper
 117 100
 82 59.5 47.4 71.2
 119 32.2 26.6 39.8

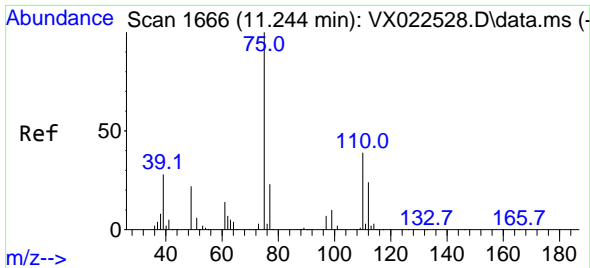


#72
 1,4-Dichlorobenzene-d4
 Concen: 50.00 ug/l
 RT: 12.024 min Scan# 1794
 Delta R.T. 0.000 min
 Lab File: VX022615.D
 Acq: 09 Jun 2021 15:43



Tgt Ion:152 Resp: 41866
 Ion Ratio Lower Upper
 152 100
 115 66.8 41.1 123.3
 150 155.7 0.0 349.0

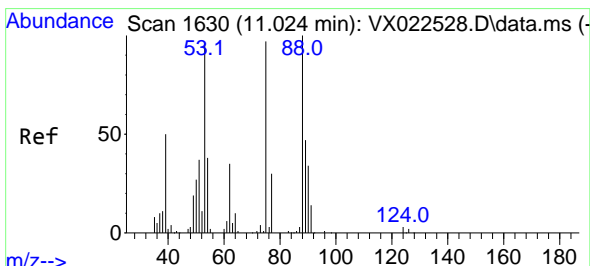
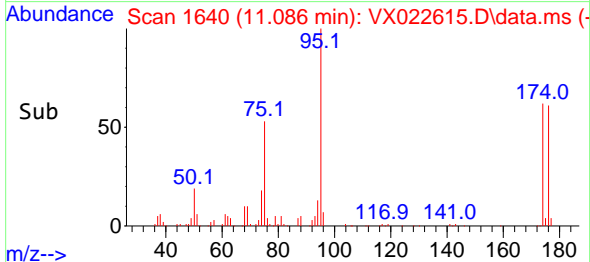
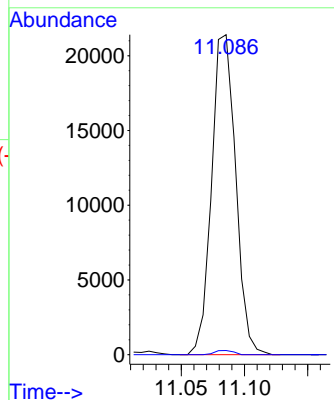
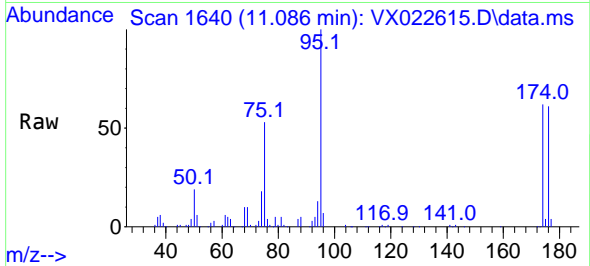




#76
 1,2,3-Trichloropropane
 Concen: 26.11 ug/l
 RT: 11.086 min Scan# 1640
 Delta R.T. -0.158 min
 Lab File: VX022615.D
 Acq: 09 Jun 2021 15:43

Instrument :
 MSVOA_X
 ClientSampled :

Tgt Ion: 75 Resp: 28314
 Ion Ratio Lower Upper
 75 100
 77 1.0 19.1 57.5#



#81
 trans-1,4-Dichloro-2-butene
 Concen: 64.35 ug/l
 RT: 11.086 min Scan# 1640
 Delta R.T. 0.062 min
 Lab File: VX022615.D
 Acq: 09 Jun 2021 15:43

Tgt Ion: 75 Resp: 28314
 Ion Ratio Lower Upper
 75 100
 53 0.0 74.5 111.7#
 89 0.0 37.9 56.9#

