

Data Path : Z:\voasrv\HPCHEM1\MSVOA_X\Data\VX060923\
 Data File : VX036108.D
 Acq On : 09 Jun 2023 15:05
 Operator : JC/MD
 Sample : 03107-11
 Misc : 5.0mL/MSVOA_X/WATER
 ALS Vial : 15 Sample Multiplier: 1

Instrument :
 MSVOA_X
 ClientSampleId :
 C0FK2

Quant Time: Jun 10 00:15:43 2023
 Quant Method : Z:\voasrv\HPCHEM1\MSVOA_X\Method\SFAMXML060623WMA.M
 Quant Title : VOC Analysis
 QLast Update : Sat Jun 10 00:08:47 2023
 Response via : Initial Calibration

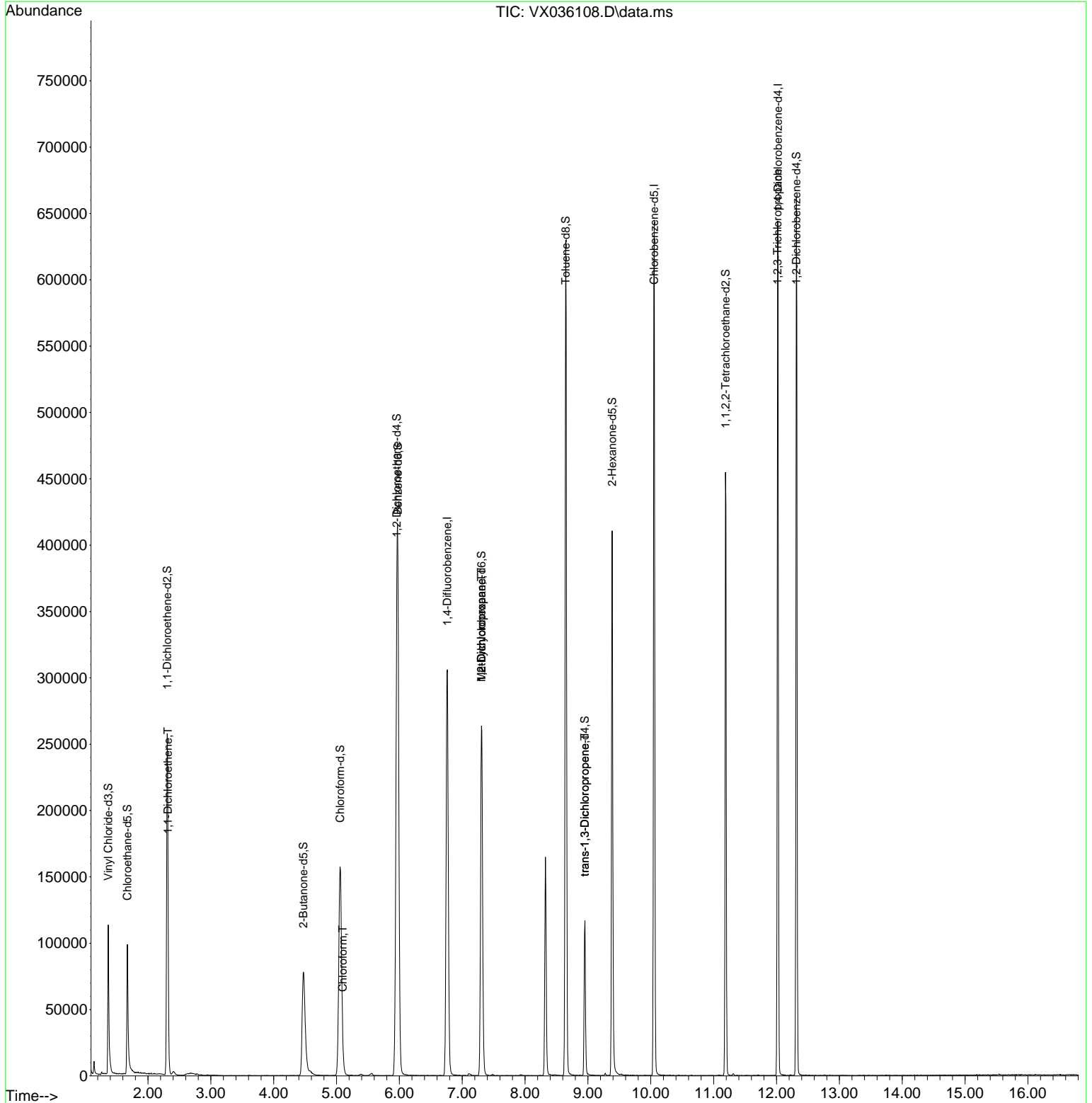
Compound	R.T.	QIon	Response	Conc	Units	Dev(Min)
Internal Standards						
1) 1,4-Difluorobenzene	6.763	114	294022	50.000	ug/L	0.00
28) Chlorobenzene-d5	10.055	117	271571	50.000	ug/L	0.00
58) 1,4-Dichlorobenzene-d4	12.024	152	123385	50.000	ug/L	0.00
System Monitoring Compounds						
4) Vinyl Chloride-d3	1.368	65	85682	42.892	ug/L	0.00
Spiked Amount	50.000	Range 60 - 135	Recovery =	85.780%		
7) Chloroethane-d5	1.672	69	74350	48.530	ug/L	0.00
Spiked Amount	50.000	Range 70 - 130	Recovery =	97.060%		
11) 1,1-Dichloroethene-d2	2.306	65	46625	46.034	ug/L	0.00
Spiked Amount	50.000	Range 60 - 125	Recovery =	92.060%		
21) 2-Butanone-d5	4.471	46	162076	98.984	ug/L	0.00
Spiked Amount	100.000	Range 40 - 130	Recovery =	98.980%		
24) Chloroform-d	5.056	84	195971	47.046	ug/L	0.00
Spiked Amount	50.000	Range 70 - 125	Recovery =	94.100%		
26) 1,2-Dichloroethane-d4	5.958	65	156491	51.484	ug/L	0.00
Spiked Amount	50.000	Range 70 - 125	Recovery =	102.960%		
32) Benzene-d6	5.976	84	392913	48.095	ug/L	0.00
Spiked Amount	50.000	Range 70 - 125	Recovery =	96.200%		
36) 1,2-Dichloropropane-d6	7.305	67	127020	50.022	ug/L	0.00
Spiked Amount	50.000	Range 70 - 120	Recovery =	100.040%		
41) Toluene-d8	8.647	98	352736	46.912	ug/L	0.00
Spiked Amount	50.000	Range 80 - 120	Recovery =	93.820%		
43) trans-1,3-Dichloroprop...	8.952	79	52763	43.287	ug/L	0.00
Spiked Amount	50.000	Range 60 - 125	Recovery =	86.580%		
47) 2-Hexanone-d5	9.384	63	112314	99.331	ug/L	0.00
Spiked Amount	100.000	Range 45 - 130	Recovery =	99.330%		
56) 1,1,2,2-Tetrachloroeth...	11.189	84	168081	48.461	ug/L	0.00
Spiked Amount	50.000	Range 65 - 120	Recovery =	96.920%		
66) 1,2-Dichlorobenzene-d4	12.317	152	121133	50.566	ug/L	0.00
Spiked Amount	50.000	Range 80 - 120	Recovery =	101.140%		
Target Compounds						
12) 1,1-Dichloroethene	2.319	96	4834	2.474	ug/L #	1
25) Chloroform	5.099	83	12075	2.660	ug/L	91
35) Methylcyclohexane	7.305	83	31844	8.902	ug/L #	17
37) 1,2-Dichloropropane	7.305	63	16226	6.833	ug/L #	87
44) trans-1,3-Dichloropropene	8.952	75	2779	0.800	ug/L	86
61) 1,2,3-Trichloropropane	12.018	75	17087	6.476	ug/L #	64

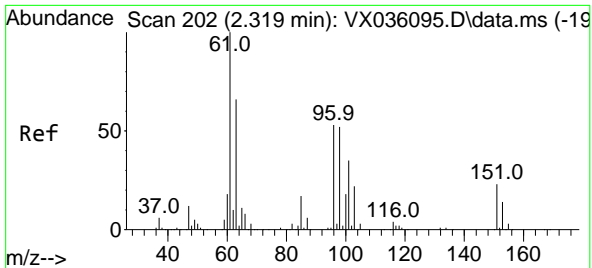
(#) = qualifier out of range (m) = manual integration (+) = signals summed

Data Path : Z:\voasrv\HPCHEM1\MSVOA_X\Data\VX060923\
 Data File : VX036108.D
 Acq On : 09 Jun 2023 15:05
 Operator : JC/MD
 Sample : 03107-11
 Misc : 5.0mL/MSVOA_X/WATER
 ALS Vial : 15 Sample Multiplier: 1

Instrument :
 MSVOA_X
ClientSampleId :
 C0FK2

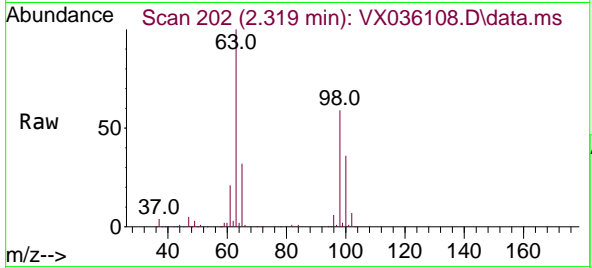
Quant Time: Jun 10 00:15:43 2023
 Quant Method : Z:\voasrv\HPCHEM1\MSVOA_X\Method\SFAMXLM060623WMA.M
 Quant Title : VOC Analysis
 QLast Update : Sat Jun 10 00:08:47 2023
 Response via : Initial Calibration



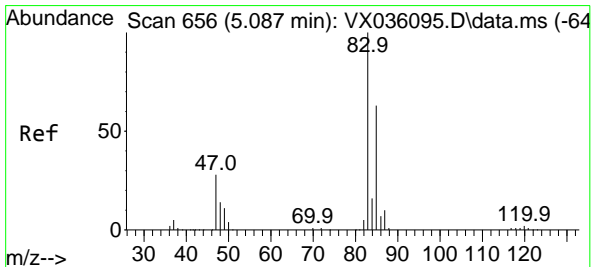
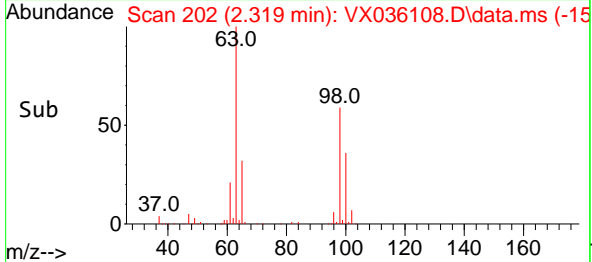
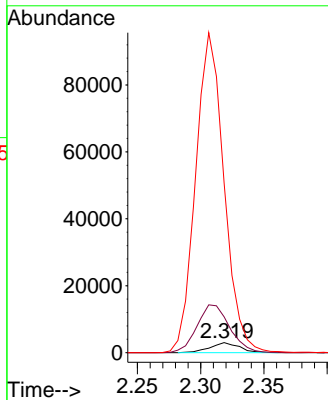


#12
 1,1-Dichloroethene
 Concen: 2.474 ug/L
 RT: 2.319 min Scan# 202
 Delta R.T. -0.000 min
 Lab File: VX036108.D
 Acq: 09 Jun 2023 15:05

Instrument : MSVOA_X
 ClientSampleId : C0FK2

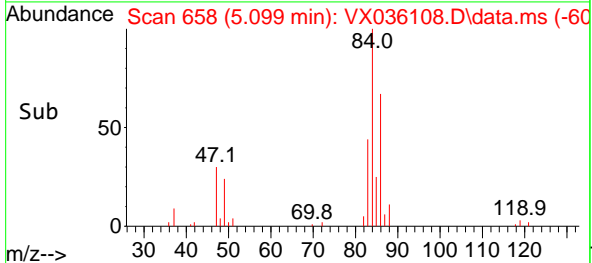
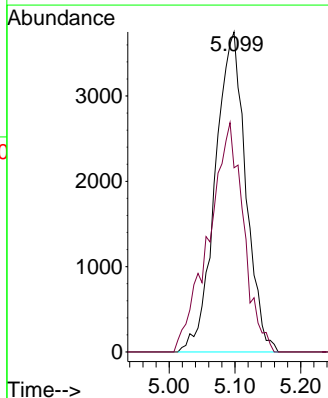
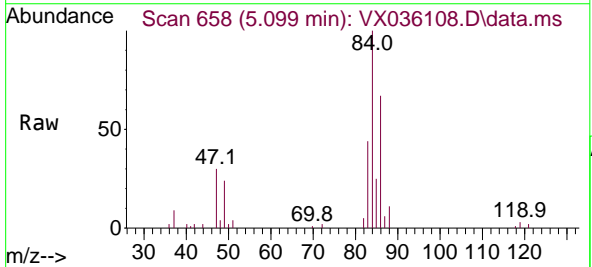


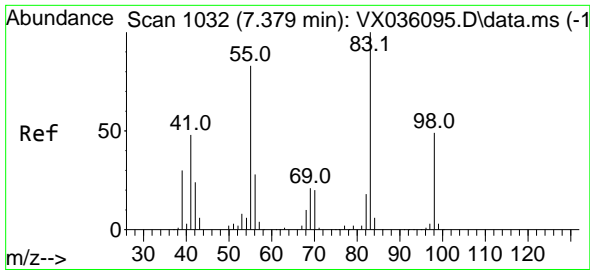
Tgt Ion: 96 Resp: 4834
 Ion Ratio Lower Upper
 96 100
 61 352.8 132.5 246.1#
 63 1668.5 95.1 176.7#



#25
 Chloroform
 Concen: 2.660 ug/L
 RT: 5.099 min Scan# 658
 Delta R.T. 0.012 min
 Lab File: VX036108.D
 Acq: 09 Jun 2023 15:05

Tgt Ion: 83 Resp: 12075
 Ion Ratio Lower Upper
 83 100
 85 57.6 45.0 83.6

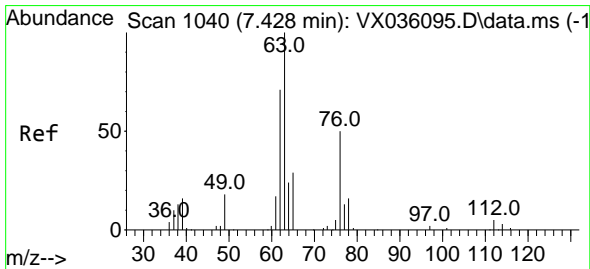
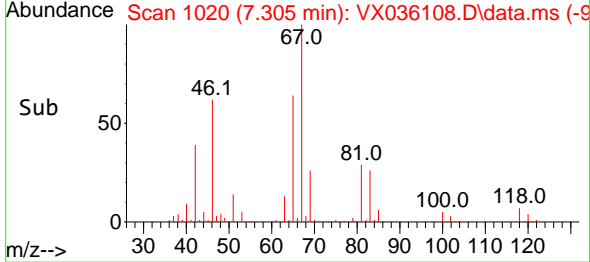
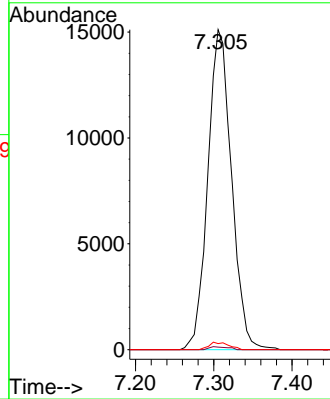
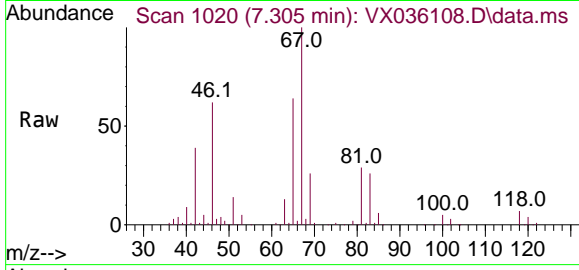




#35
 Methylcyclohexane
 Concen: 8.902 ug/L
 RT: 7.305 min Scan# 1020
 Delta R.T. -0.073 min
 Lab File: VX036108.D
 Acq: 09 Jun 2023 15:05

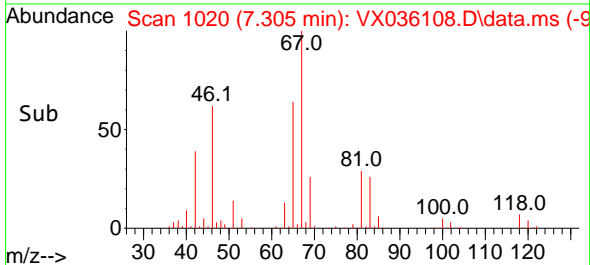
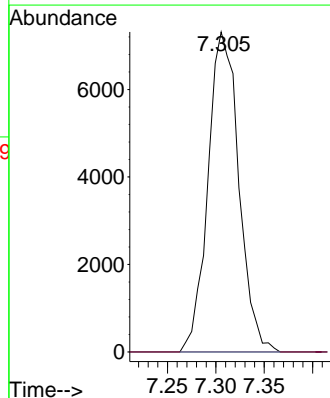
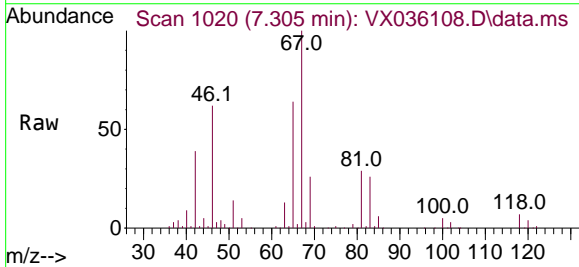
Instrument : MSVOA_X
 ClientSampleId : C0FK2

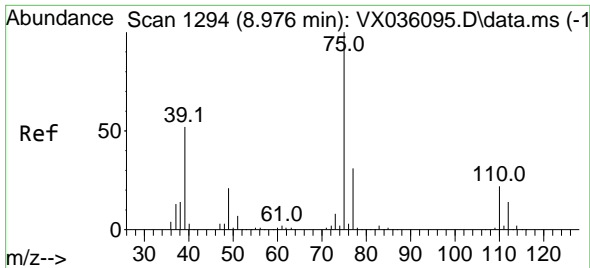
Tgt Ion	Resp	Lower	Upper
83	31844		
55	0.6	65.4	98.2#
98	1.9	39.0	58.6#



#37
 1,2-Dichloropropane
 Concen: 6.833 ug/L
 RT: 7.305 min Scan# 1020
 Delta R.T. -0.122 min
 Lab File: VX036108.D
 Acq: 09 Jun 2023 15:05

Tgt Ion	Resp	Lower	Upper
63	16226		
112	0.0	3.5	5.3#

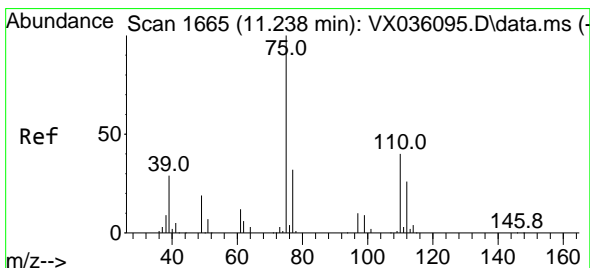
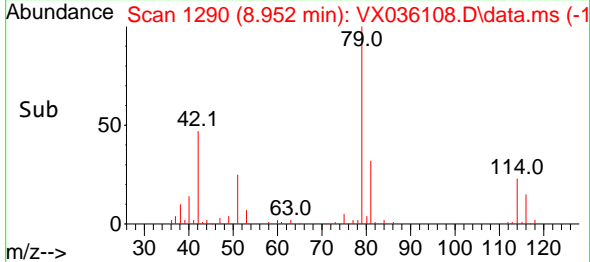
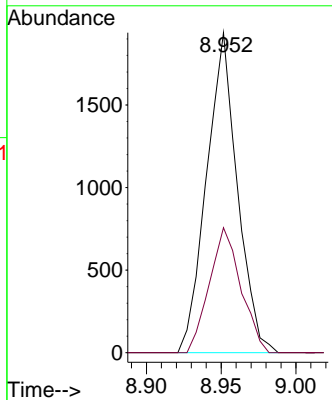
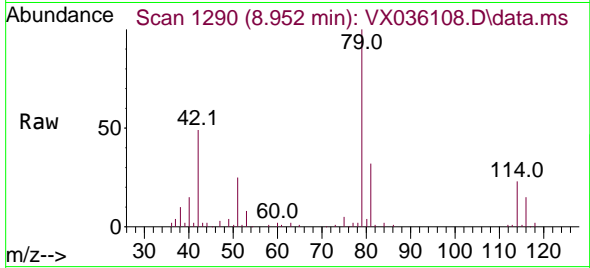




#44
 trans-1,3-Dichloropropene
 Concen: 0.800 ug/L
 RT: 8.952 min Scan# 1111
 Delta R.T. -0.025 min
 Lab File: VX036108.D
 Acq: 09 Jun 2023 15:05

Instrument :
 MSVOA_X
 ClientSampleId :
 C0FK2

Tgt Ion: 75 Resp: 2779
 Ion Ratio Lower Upper
 75 100
 77 39.1 22.0 41.0



#61
 1,2,3-Trichloropropane
 Concen: 6.476 ug/L
 RT: 12.018 min Scan# 1793
 Delta R.T. 0.780 min
 Lab File: VX036108.D
 Acq: 09 Jun 2023 15:05

Tgt Ion: 75 Resp: 17087
 Ion Ratio Lower Upper
 75 100
 77 35.2 25.2 37.8
 110 2.9 31.8 47.6#

