

Data Path : Z:\VOASRV\HPCHEM1\MSVOA X\DATA\VX061019\
 Data File : VX010188.D
 Acq On : 10 Jun 2019 19:16
 Operator : JC/SP
 Sample : K3279-02 10X
 Misc : 5.0mL/MSVOA X/WATER
 ALS Vial : 25 Sample Multiplier: 1

Instrument :
 MSVOA_X
ClientSampleId :
 BPS1-TT-MW312S-20190607

Quant Time: Jun 11 07:48:59 2019
 Quant Method : Z:\VOASRV\HPCHEM1\MSVOA_X\METHOD\82X060719W.M
 Quant Title : SW846 8260
 QLast Update : Sat Jun 08 02:12:13 2019
 Response via : Initial Calibration

Internal Standards	R.T.	QIon	Response	Conc	Units	Dev(Min)
1) Pentafluorobenzene	5.66	168	250421	50.00	ug/l	0.00
34) 1,4-Difluorobenzene	6.85	114	378797	50.00	ug/l	0.00
63) Chlorobenzene-d5	10.11	117	348457	50.00	ug/l	0.00
72) 1,4-Dichlorobenzene-d4	12.08	152	166666	50.00	ug/l	0.00
System Monitoring Compounds						
33) 1,2-Dichloroethane-d4	6.06	65	112572	46.05	ug/l	0.00
Spiked Amount	50.000		Recovery	=	92.10%	
35) Dibromofluoromethane	5.49	113	116262	49.76	ug/l	0.00
Spiked Amount	50.000		Recovery	=	99.52%	
50) Toluene-d8	8.71	98	446228	50.96	ug/l	0.00
Spiked Amount	50.000		Recovery	=	101.92%	
62) 4-Bromofluorobenzene	11.13	95	155638	47.59	ug/l	0.00
Spiked Amount	50.000		Recovery	=	95.18%	

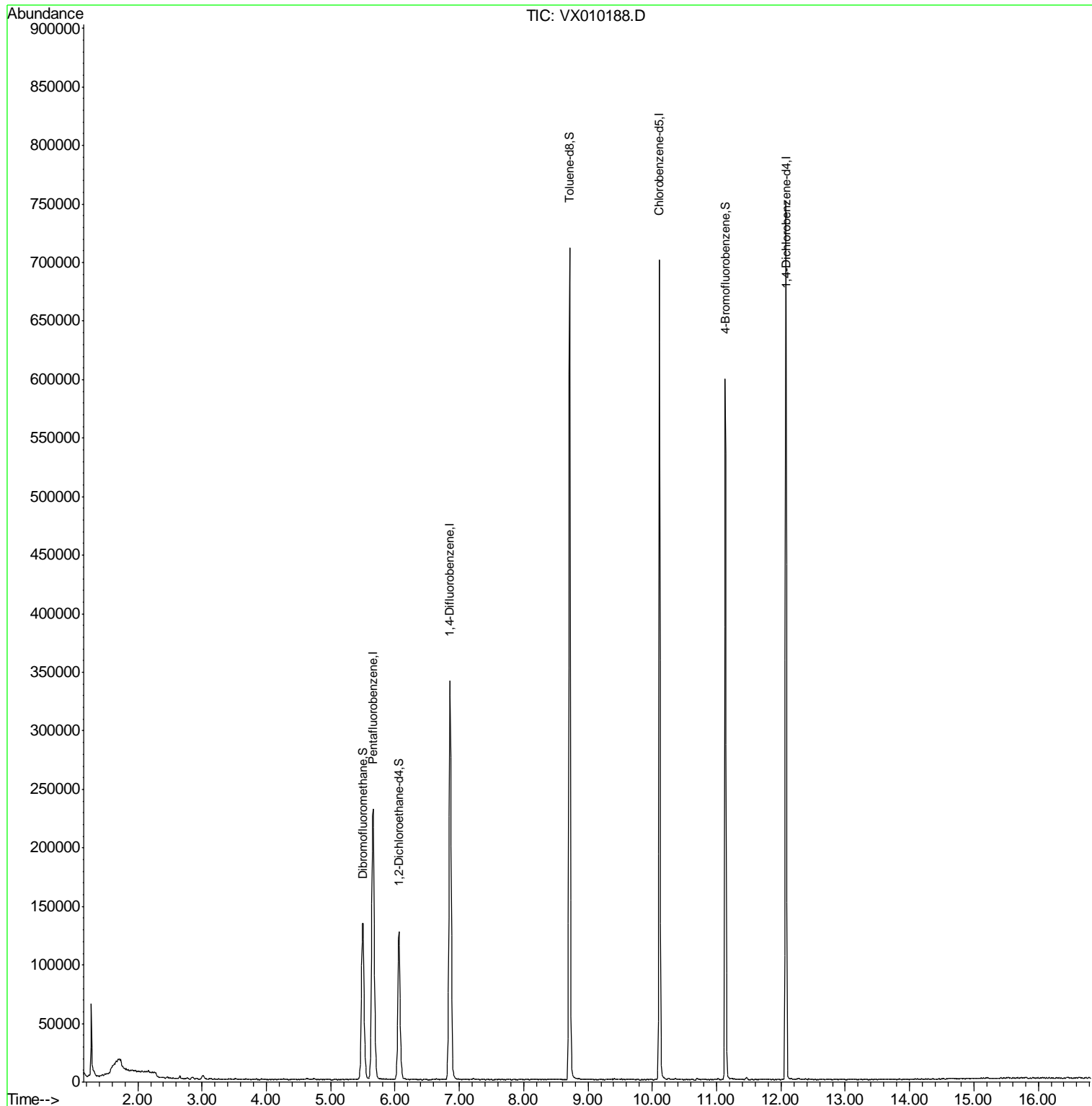
Target Compounds Qvalue

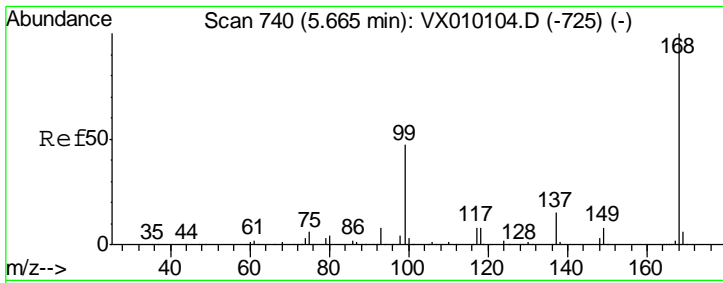
(#) = qualifier out of range (m) = manual integration (+) = signals summed

Data Path : Z:\VOASRV\HPCHEM1\MSVOA X\DATA\VX061019\
 Data File : VX010188.D
 Acq On : 10 Jun 2019 19:16
 Operator : JC/SP
 Sample : K3279-02 10X
 Misc : 5.0mL/MSVOA X/WATER
 ALS Vial : 25 Sample Multiplier: 1

Instrument :
 MSVOA_X
Client Sampled :
 BPS1-TT-MW312S-20190607

Quant Time: Jun 11 07:48:59 2019
 Quant Method : Z:\VOASRV\HPCHEM1\MSVOA_X\METHOD\82X060719W.M
 Quant Title : SW846 8260
 QLast Update : Sat Jun 08 02:12:13 2019
 Response via : Initial Calibration

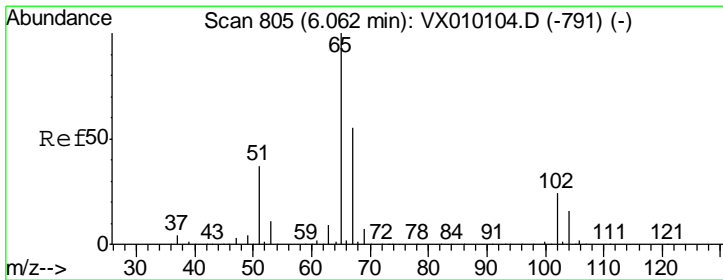
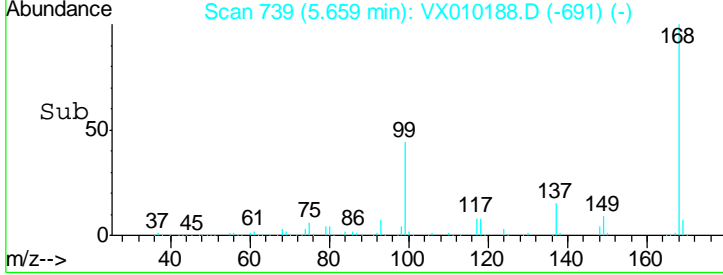
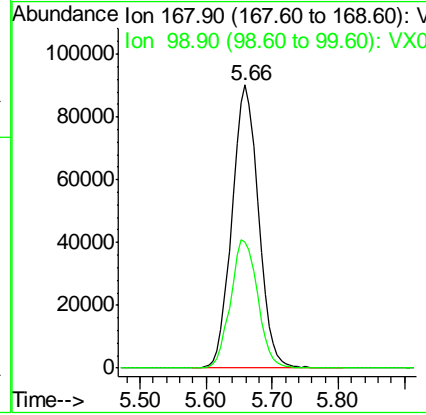
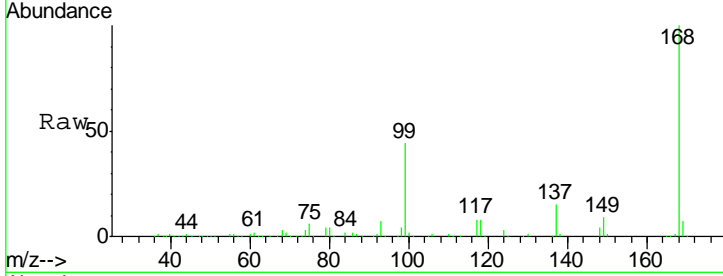




#1
 Pentafluorobenzene
 Concen: 50.000 ug/l
 RT: 5.66 min Scan# 739
 Delta R.T. -0.01 min
 Lab File: VX010188.D
 Acq: 10 Jun 2019 19:16

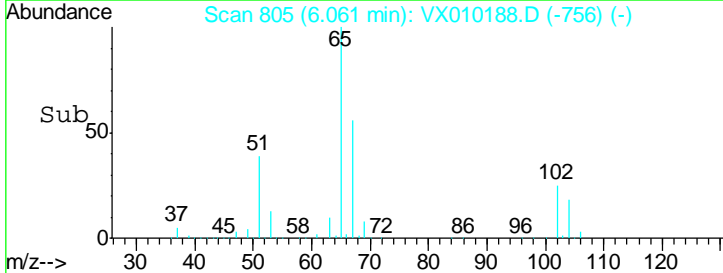
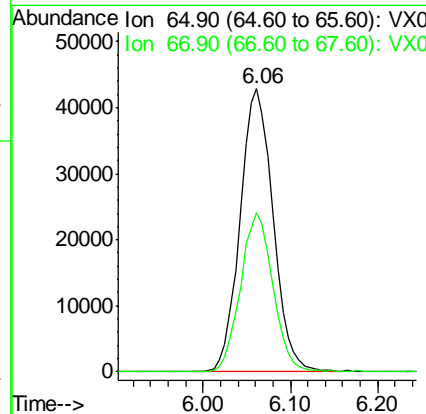
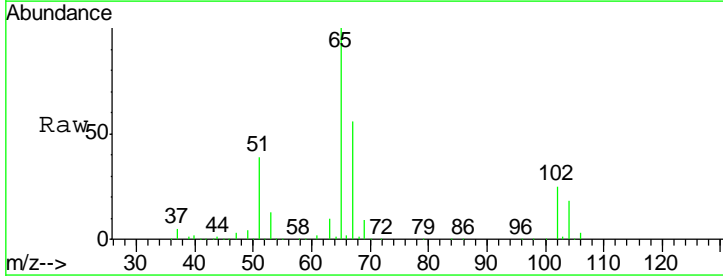
Instrument :
 MSVOA_X
ClientSampled :
 BPS1-TT-MW312S-20190607

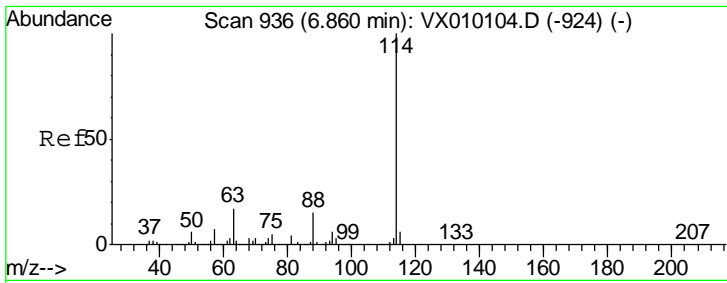
Tgt Ion: 168 Resp: 250421
 Ion Ratio Lower Upper
 168 100
 99 44.5 43.0 64.6



#33
 1,2-Dichloroethane-d4
 Concen: 46.053 ug/l
 RT: 6.06 min Scan# 805
 Delta R.T. 0.00 min
 Lab File: VX010188.D
 Acq: 10 Jun 2019 19:16

Tgt Ion: 65 Resp: 112572
 Ion Ratio Lower Upper
 65 100
 67 55.1 0.0 108.4

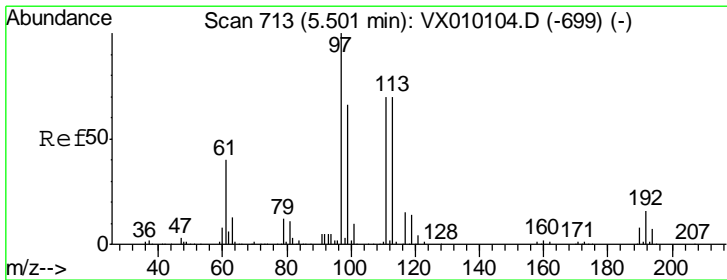
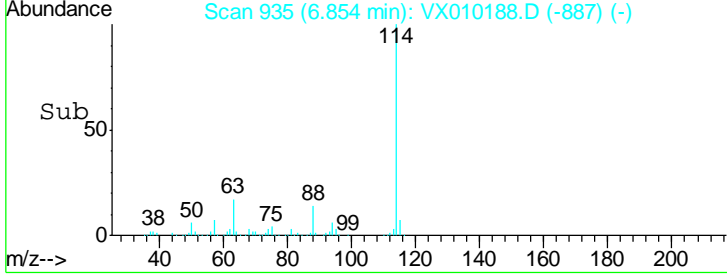
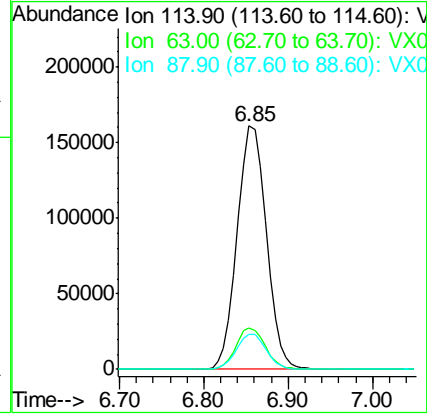
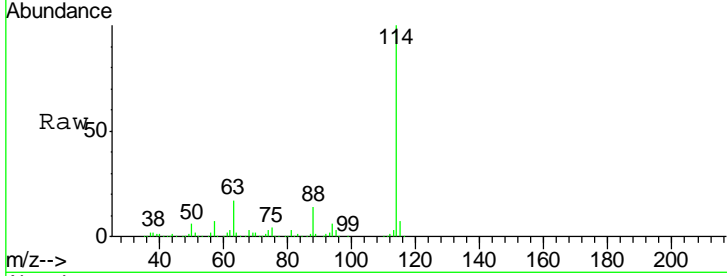




#34
 1,4-Difluorobenzene
 Concen: 50.000 ug/l
 RT: 6.85 min Scan# 935
 Delta R.T. -0.01 min
 Lab File: VX010188.D
 Acq: 10 Jun 2019 19:16

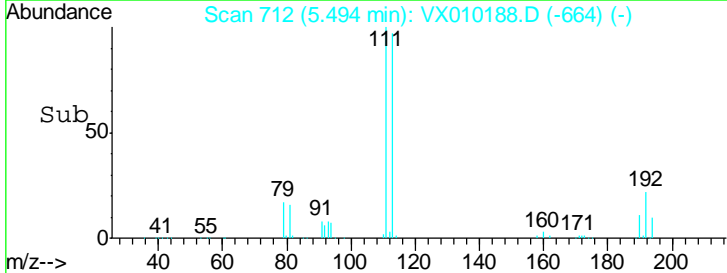
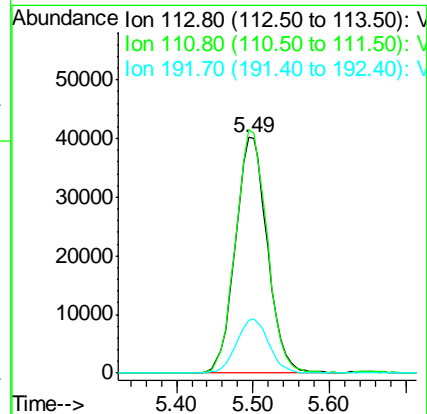
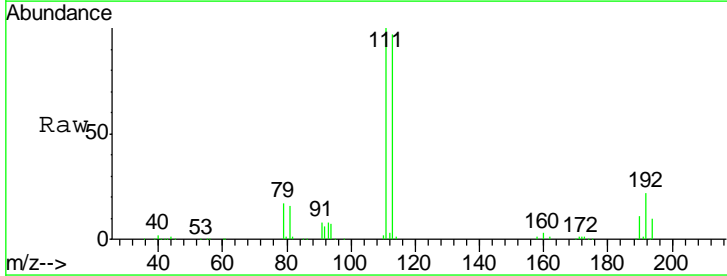
Instrument :
 MSVOA_X
 ClientSampled :
 BPS1-TT-MW312S-20190607

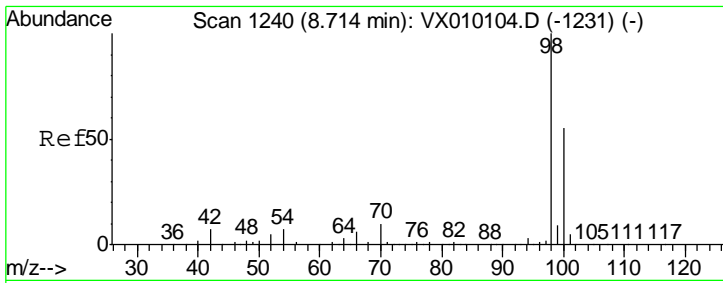
Tgt Ion	Resp	Lower	Upper
114	378797		
63	16.9	0.0	47.4
88	14.2	0.0	33.0



#35
 Dibromofluoromethane
 Concen: 49.759 ug/l
 RT: 5.49 min Scan# 712
 Delta R.T. -0.01 min
 Lab File: VX010188.D
 Acq: 10 Jun 2019 19:16

Tgt Ion	Resp	Lower	Upper
113	116262		
111	101.5	82.2	123.2
192	23.3	17.1	25.7

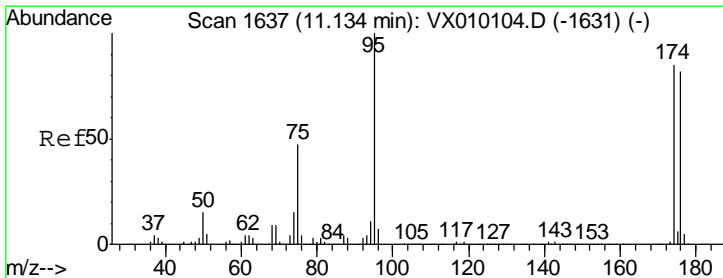
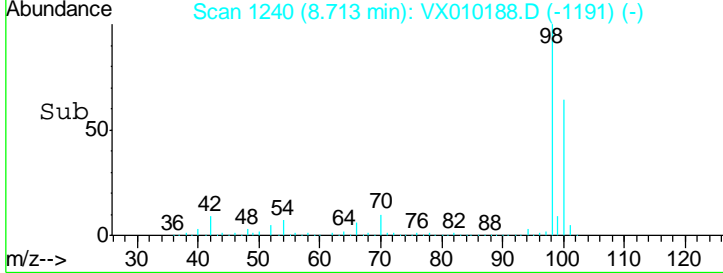
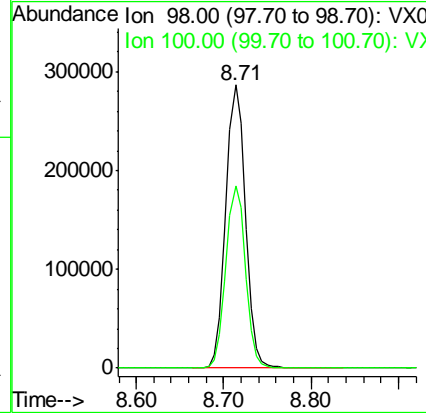
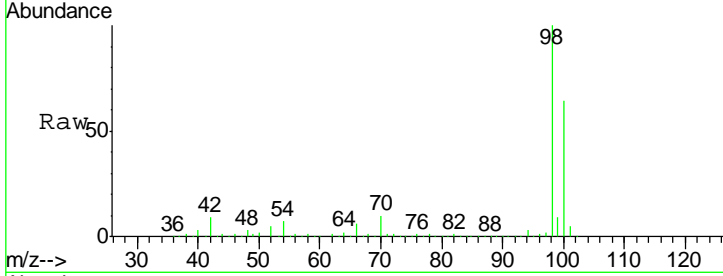




#50
 Toluene-d8
 Concen: 50.958 ug/l
 RT: 8.71 min Scan# 1240
 Delta R.T. 0.00 min
 Lab File: VX010188.D
 Acq: 10 Jun 2019 19:16

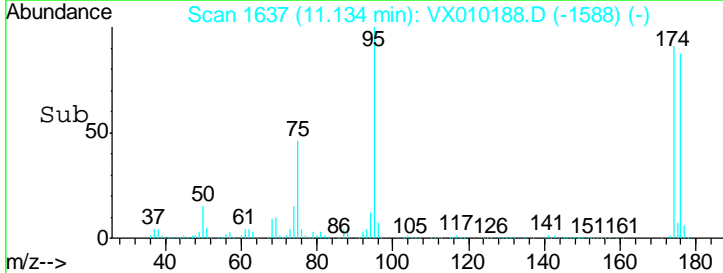
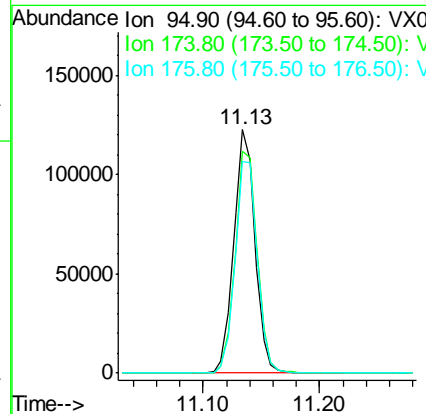
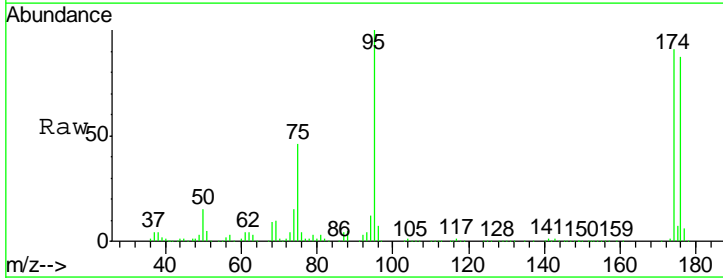
Instrument :
 MSVOA_X
 ClientSampled :
 BPS1-TT-MW312S-20190607

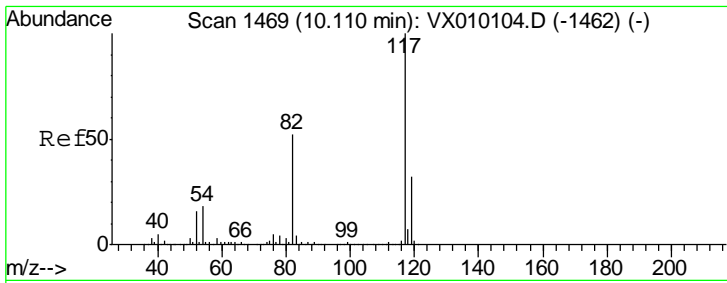
Tgt Ion: 98 Resp: 446228
 Ion Ratio Lower Upper
 98 100
 100 64.4 51.5 77.3



#62
 4-Bromofluorobenzene
 Concen: 47.591 ug/l
 RT: 11.13 min Scan# 1637
 Delta R.T. 0.00 min
 Lab File: VX010188.D
 Acq: 10 Jun 2019 19:16

Tgt Ion: 95 Resp: 155638
 Ion Ratio Lower Upper
 95 100
 174 94.7 0.0 160.4
 176 91.5 0.0 154.6

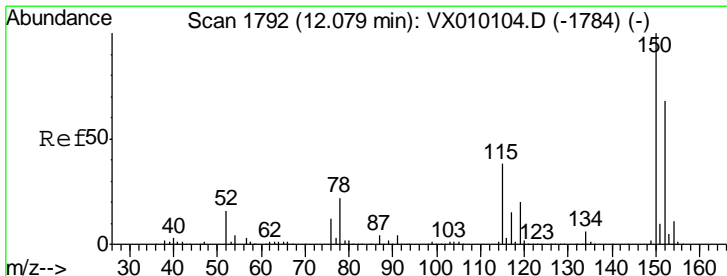
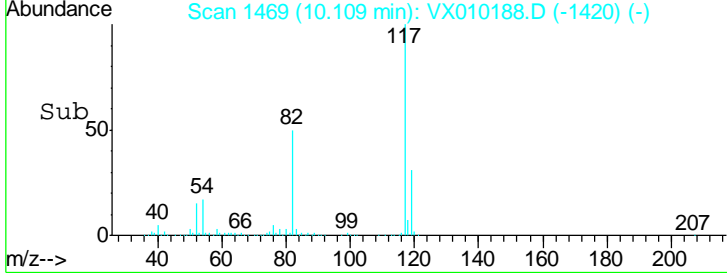
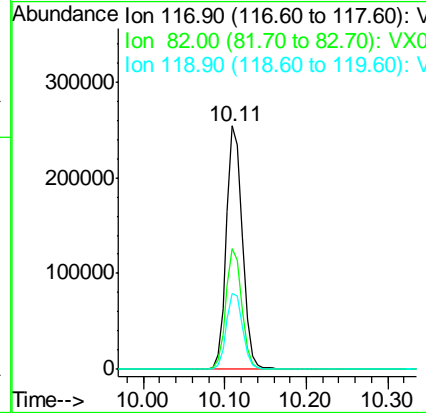
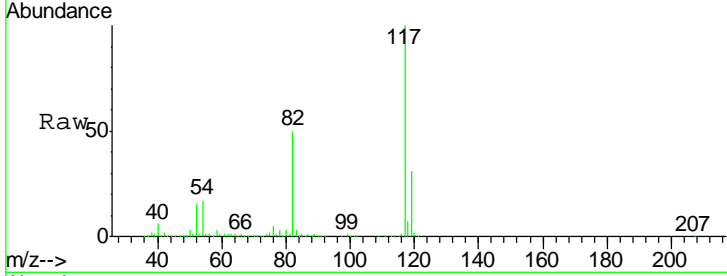




#63
 Chlorobenzene-d5
 Concen: 50.000 ug/l
 RT: 10.11 min Scan# 1469
 Delta R.T. -0.00 min
 Lab File: VX010188.D
 Acq: 10 Jun 2019 19:16

Instrument : MSVOA_X
 ClientSampled : BPS1-TT-MW312S-20190607

Tgt Ion	Resp	Lower	Upper
117	348457		
82	49.8	49.2	73.8
119	31.3	25.2	37.8



#72
 1,4-Dichlorobenzene-d4
 Concen: 50.000 ug/l
 RT: 12.08 min Scan# 1792
 Delta R.T. -0.00 min
 Lab File: VX010188.D
 Acq: 10 Jun 2019 19:16

Tgt Ion	Resp	Lower	Upper
152	166666		
115	54.1	41.4	124.2
150	156.6	0.0	345.2

