

Data Path : Z:\VOASRV\HPCHEM1\MSVOA X\DATA\VX061119\
 Data File : VX010219.D
 Acq On : 11 Jun 2019 10:01
 Operator : JC/SP
 Sample : VX0611MBL01
 Misc : 5.00µ/10mL/100uL/5.0mL/MSVOA_X/MEOH
 ALS Vial : 3 Sample Multiplier: 1

Instrument :
 MSVOA_X
 ClientSampleId :
 VX0611MBL01

Integration Parameters: RTEINT.P
 Integrator: RTE
 Smoothing : ON Filtering: 5
 Sampling : 1 Min Area: 3 % of largest Peak
 Start Thrs: 0.2 Max Peaks: 100
 Stop Thrs : 0 Peak Location: TOP

If leading or trailing edge < 100 prefer < Baseline drop else tangent >
 Peak separation: 5

Method : Z:\VOASRV\HPCHEM1\MSVOA_X\METHOD\82X060719W.M
 Title : SW846 8260

Signal : TIC

peak #	R.T. min	first scan	max scan	last scan	PK TY	peak height	corr. area	corr. % max.	% of total
1	4.690	571	580	590	rVB2	7108	22398	1.97%	0.373%
2	5.494	697	712	726	rBV	138861	402492	35.42%	6.695%
3	5.659	726	739	755	rVB	240146	674264	59.34%	11.215%
4	6.061	793	805	819	rBV	129361	339898	29.92%	5.653%
5	6.854	922	935	948	rBV	354988	824093	72.53%	13.707%
6	8.713	1232	1240	1251	rBV	726811	1136181	100.00%	18.898%
7	10.109	1463	1469	1480	rBV	727475	954799	84.04%	15.881%
8	11.134	1631	1637	1646	rBV	611682	758108	66.72%	12.610%
9	12.073	1786	1791	1801	rBV	702096	899961	79.21%	14.969%

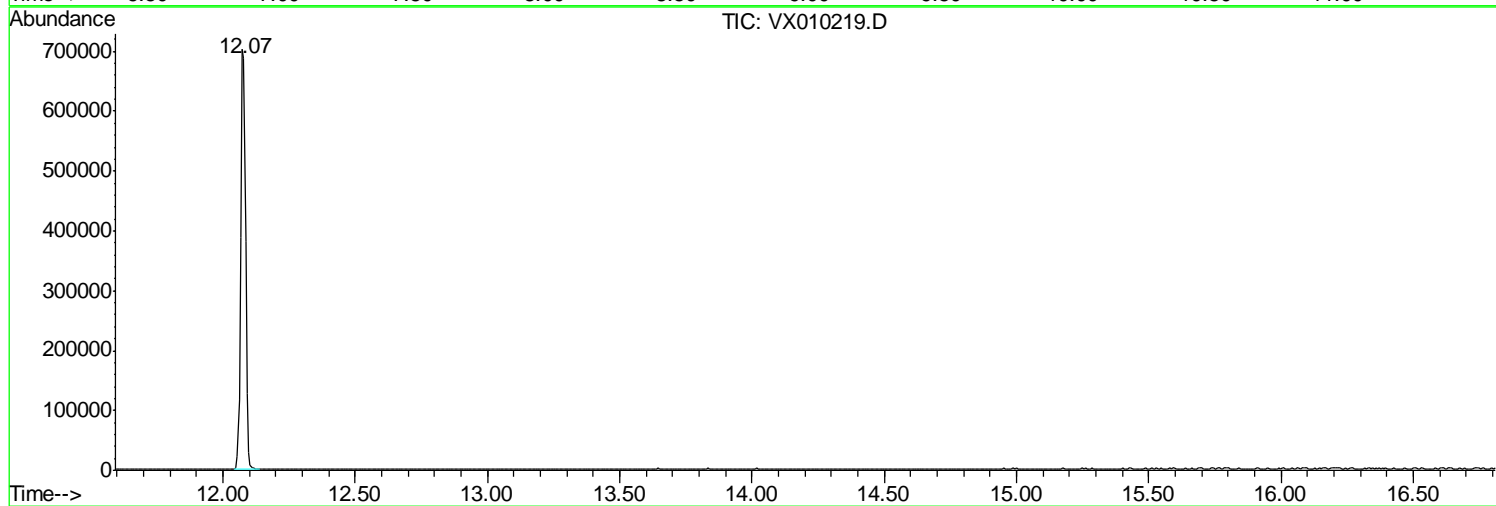
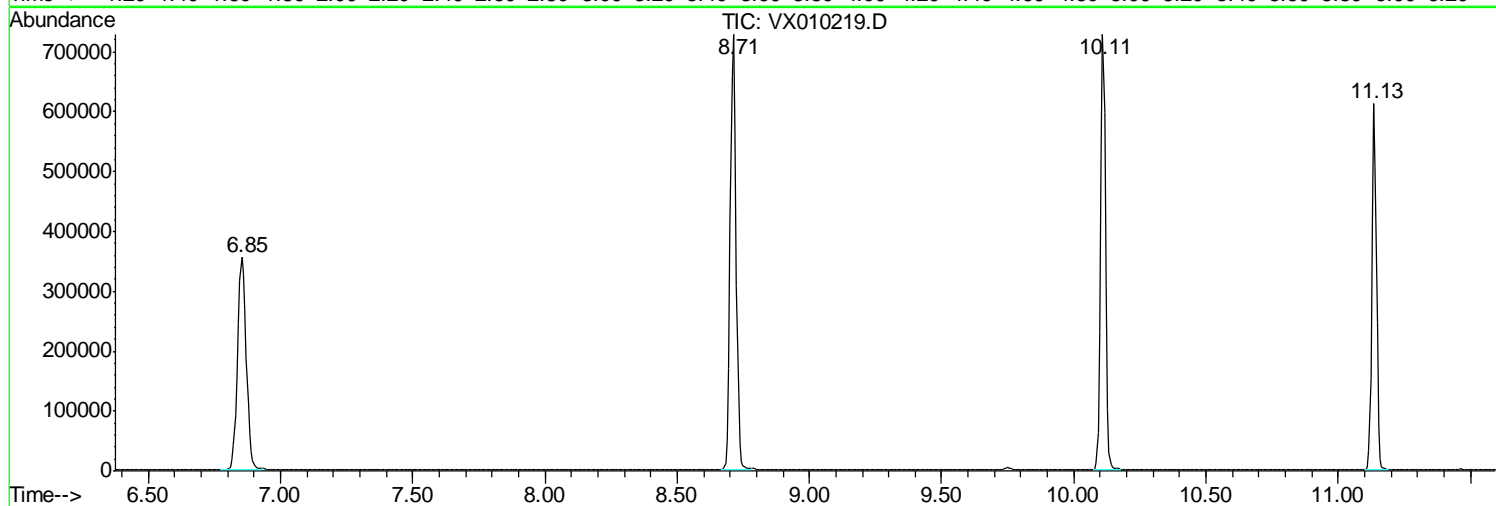
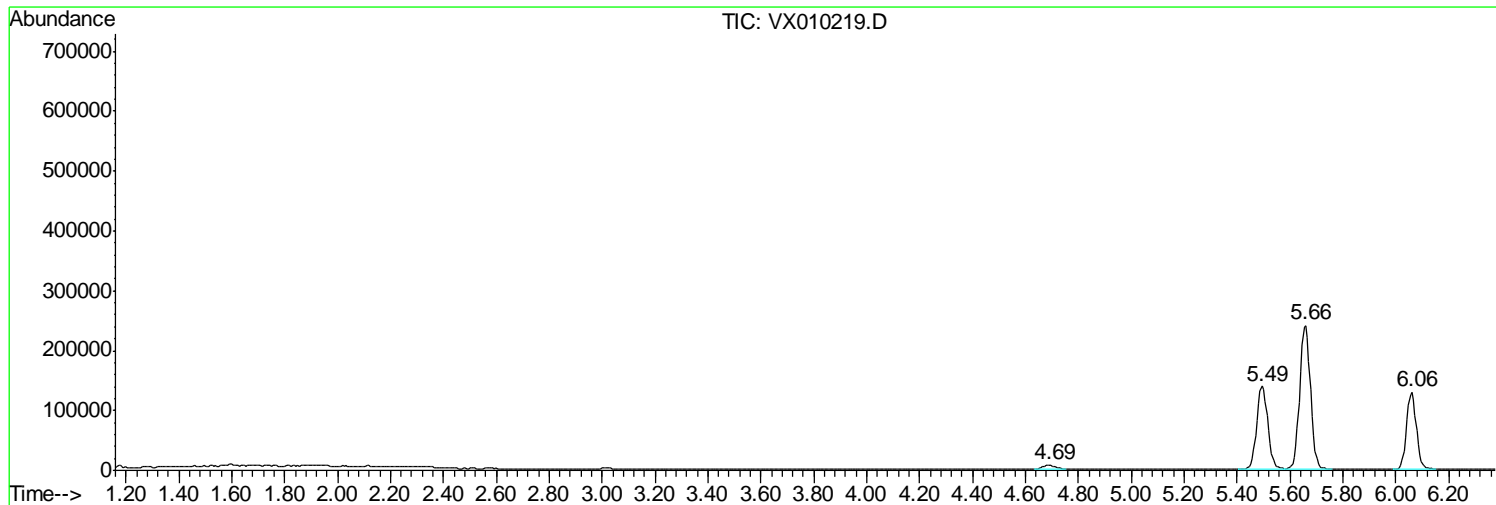
Sum of corrected areas: 6012194

Data Path : Z:\VOASRV\HPCHEM1\MSVOA X\DATA\VX061119\
Data File : VX010219.D
Acq On : 11 Jun 2019 10:01
Operator : JC/SP
Sample : VX0611MBL01
Misc : 5.00µ/10mL/100uL/5.0mL/MSVOA_X/MEOH
ALS Vial : 3 Sample Multiplier: 1

Instrument :
MSVOA_X
ClientSampled :
VX0611MBL01

Quant Method : Z:\VOASRV\HPCHEM1\MSVOA_X\METHOD\82X060719W.M
Quant Title : SW846 8260

TIC Library : C:\DATABASE\NIST11.L
TIC Integration Parameters: LSCINT.P



Data Path : Z:\VOASRV\HPCHEM1\MSVOA_X\DATA\VX061119\
Data File : VX010219.D
Acq On : 11 Jun 2019 10:01
Operator : JC/SP
Sample : VX0611MBL01
Misc : 5.00g/10mL/100uL/5.0mL/MSVOA_X/MEOH
ALS Vial : 3 Sample Multiplier: 1

Instrument :
MSVOA_X
ClientSampleId :
VX0611MBL01

Quant Method : Z:\VOASRV\HPCHEM1\MSVOA_X\METHOD\82X060719W.M
Quant Title : SW846 8260

TIC Library : C:\DATABASE\NIST11.L
TIC Integration Parameters: LSCINT.P

No Library Search Compounds Detected

Data Path : Z:\VOASRV\HPCHEM1\MSVOA_X\DATA\VX061119\
Data File : VX010219.D
Acq On : 11 Jun 2019 10:01
Operator : JC/SP
Sample : VX0611MBL01
Misc : 5.00g/10mL/100uL/5.0mL/MSVOA_X/MEOH
ALS Vial : 3 Sample Multiplier: 1

Instrument :
MSVOA_X
ClientSampleId :
VX0611MBL01

Quant Method : Z:\VOASRV\HPCHEM1\MSVOA_X\METHOD\82X060719W.M
Quant Title : SW846 8260

TIC Library : C:\DATABASE\NIST11.L
TIC Integration Parameters: LSCINT.P

TIC Top Hit name	RT	EstConc	Units	Response	--Internal Standard--			
					#	RT	Resp	Conc
