

Data Path : Z:\voasrv\HPCHEM1\MSVOA_X\Data\VX061121\
 Data File : VX022669.D
 Acq On : 11 Jun 2021 15:56
 Operator : JC/MD
 Sample : M2688-02
 Misc : 5.0mL/MSVOA_X/WATER
 ALS Vial : 15 Sample Multiplier: 1

Instrument :
 MSVOA_X
 ClientSampleId :
 MW-1

Quant Time: Jun 12 02:29:34 2021
 Quant Method : Z:\voasrv\HPCHEM1\MSVOA_X\Method\82X061021W.M
 Quant Title : SW846 8260
 QLast Update : Thu Jun 10 12:20:00 2021
 Response via : Initial Calibration

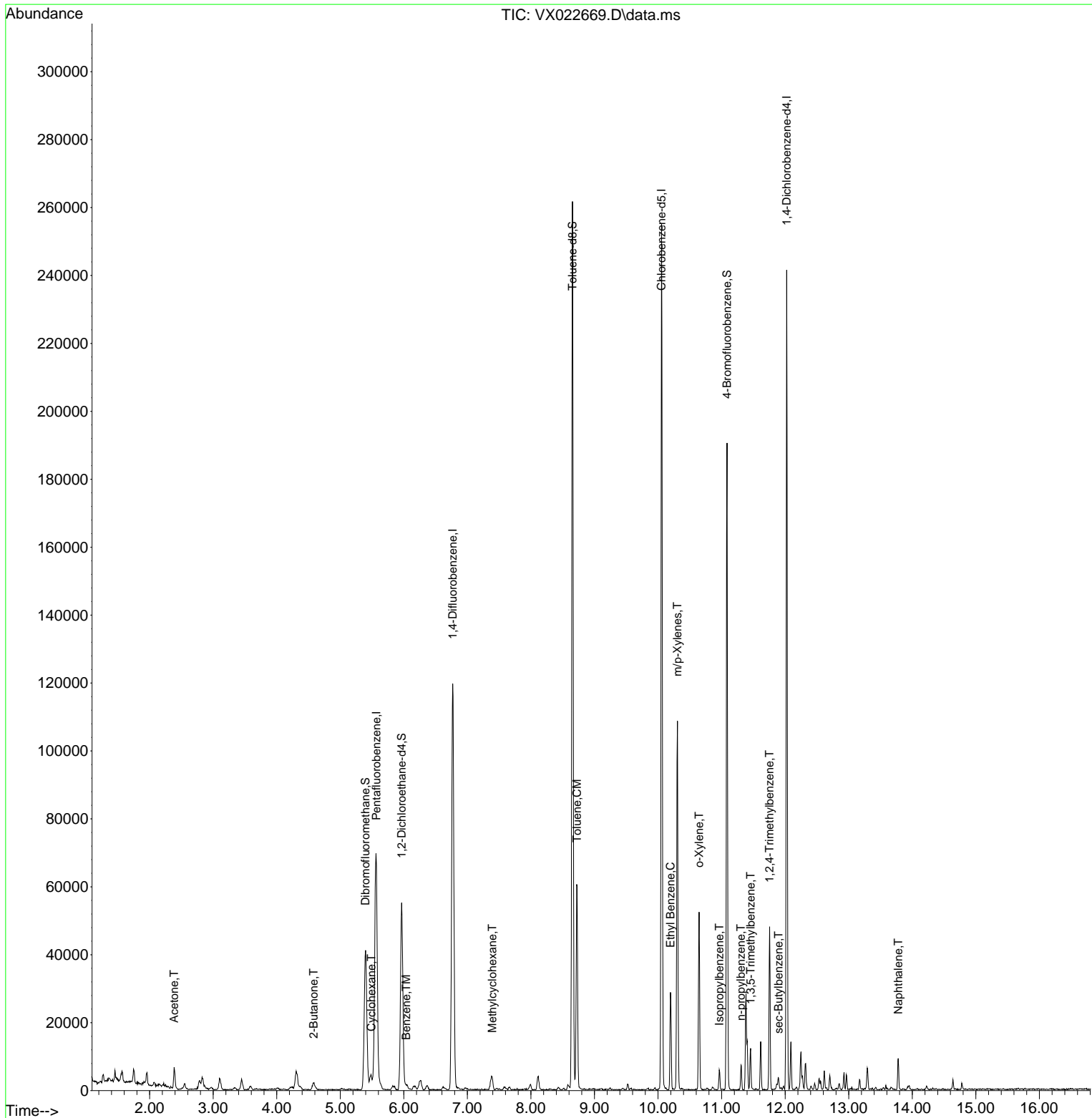
| Compound | R.T. | QIon | Response | Conc | Units | Dev(Min) |
|-----------------------------|--------|----------------|----------|--------|---------|----------|
| ----- | | | | | | |
| Internal Standards | | | | | | |
| 1) Pentafluorobenzene | 5.568 | 168 | 58667 | 50.000 | ug/l | # 0.00 |
| 34) 1,4-Difluorobenzene | 6.769 | 114 | 117674 | 50.000 | ug/l | 0.00 |
| 63) Chlorobenzene-d5 | 10.055 | 117 | 103724 | 50.000 | ug/l | 0.00 |
| 72) 1,4-Dichlorobenzene-d4 | 12.024 | 152 | 41093 | 50.000 | ug/l | 0.00 |
| System Monitoring Compounds | | | | | | |
| 33) 1,2-Dichloroethane-d4 | 5.964 | 65 | 49705 | 47.109 | ug/l | 0.00 |
| Spiked Amount | 50.000 | Range 78 - 117 | Recovery | = | 94.220% | |
| 35) Dibromofluoromethane | 5.397 | 113 | 34610 | 46.098 | ug/l | 0.00 |
| Spiked Amount | 50.000 | Range 75 - 124 | Recovery | = | 92.200% | |
| 50) Toluene-d8 | 8.653 | 98 | 144067 | 48.677 | ug/l | 0.00 |
| Spiked Amount | 50.000 | Range 92 - 112 | Recovery | = | 97.360% | |
| 62) 4-Bromofluorobenzene | 11.085 | 95 | 50609 | 45.213 | ug/l | 0.00 |
| Spiked Amount | 50.000 | Range 83 - 123 | Recovery | = | 90.420% | |
| Target Compounds | | | | | | |
| | | | | | | Qvalue |
| 16) Acetone | 2.386 | 43 | 6828 | 14.452 | ug/l | 92 |
| 25) 2-Butanone | 4.580 | 43 | 3626 | 4.732 | ug/l | # 75 |
| 31) Cyclohexane | 5.489 | 56 | 3224 | 2.533 | ug/l | # 78 |
| 39) Methylcyclohexane | 7.391 | 83 | 1727 | 1.412 | ug/l | 90 |
| 40) Benzene | 6.037 | 78 | 1632 | 0.468 | ug/l | 95 |
| 52) Toluene | 8.726 | 92 | 22383 | 10.310 | ug/l | 97 |
| 67) Ethyl Benzene | 10.195 | 91 | 16354 | 4.109 | ug/l | 99 |
| 68) m/p-Xylenes | 10.305 | 106 | 24647 | 17.098 | ug/l | 99 |
| 69) o-Xylene | 10.646 | 106 | 10724 | 7.678 | ug/l | 97 |
| 73) Isopropylbenzene | 10.963 | 105 | 2966 | 0.879 | ug/l | 94 |
| 78) n-propylbenzene | 11.305 | 91 | 4593 | 1.127 | ug/l | 99 |
| 80) 1,3,5-Trimethylbenzene | 11.457 | 105 | 5101 | 1.815 | ug/l | 99 |
| 84) 1,2,4-Trimethylbenzene | 11.756 | 105 | 20112 | 7.055 | ug/l | 95 |
| 85) sec-Butylbenzene | 11.896 | 105 | 2247 | 0.652 | ug/l | 89 |
| 95) Naphthalene | 13.780 | 128 | 5526 | 3.010 | ug/l | 96 |
| ----- | | | | | | |

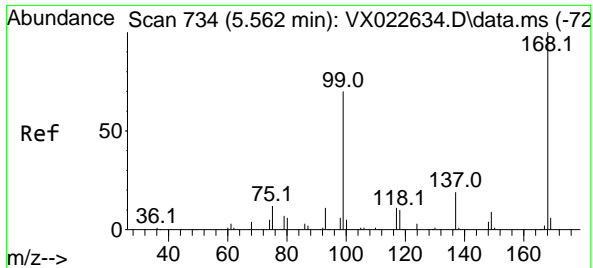
(#) = qualifier out of range (m) = manual integration (+) = signals summed

Data Path : Z:\voasrv\HPCHEM1\MSVOA_X\Data\VX061121\
 Data File : VX022669.D
 Acq On : 11 Jun 2021 15:56
 Operator : JC/MD
 Sample : M2688-02
 Misc : 5.0mL/MSVOA_X/WATER
 ALS Vial : 15 Sample Multiplier: 1

Instrument :
 MSVOA_X
 ClientSampled :
 MW-1

Quant Time: Jun 12 02:29:34 2021
 Quant Method : Z:\voasrv\HPCHEM1\MSVOA_X\Method\82X061021W.M
 Quant Title : SW846 8260
 QLast Update : Thu Jun 10 12:20:00 2021
 Response via : Initial Calibration

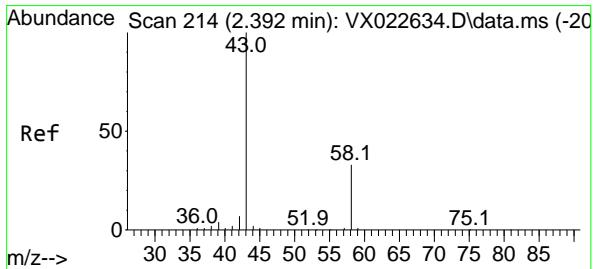
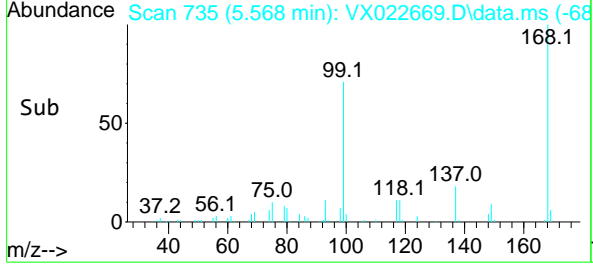
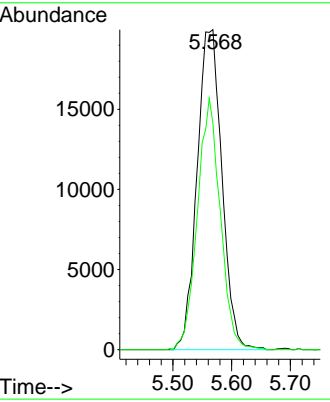
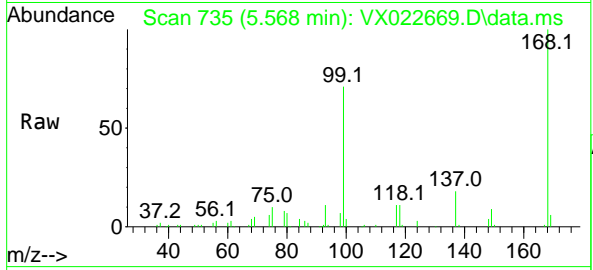




#1
 Pentafluorobenzene
 Concen: 50.000 ug/l
 RT: 5.568 min Scan# 735
 Delta R.T. 0.006 min
 Lab File: VX022669.D
 Acq: 11 Jun 2021 15:56

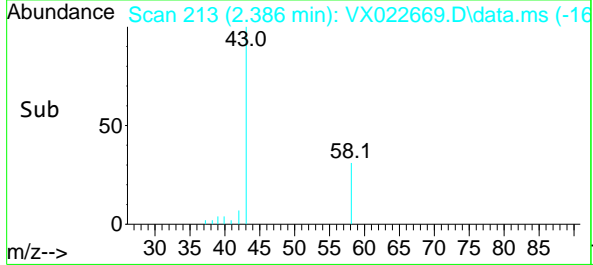
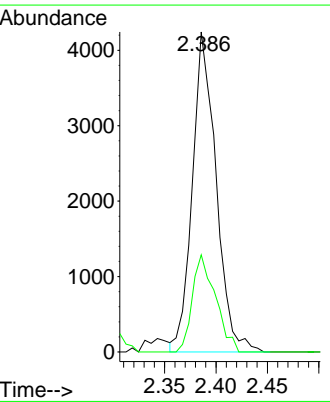
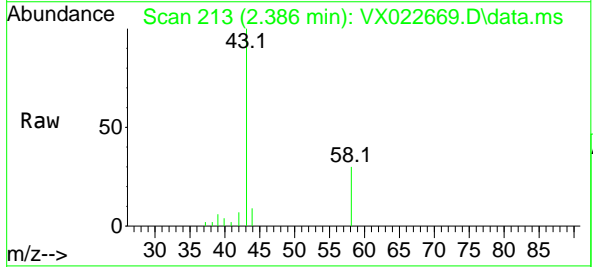
Instrument :
 MSVOA_X
 ClientSampled :
 MW-1

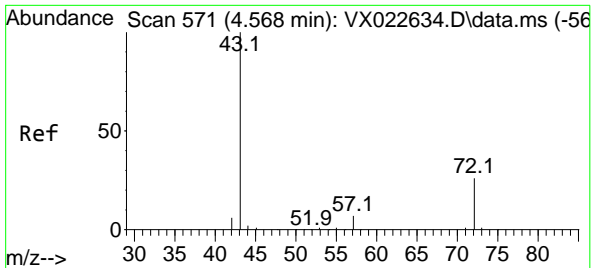
Tgt Ion:168 Resp: 58667
 Ion Ratio Lower Upper
 168 100
 99 70.8 45.8 68.6#



#16
 Acetone
 Concen: 14.452 ug/l
 RT: 2.386 min Scan# 213
 Delta R.T. -0.006 min
 Lab File: VX022669.D
 Acq: 11 Jun 2021 15:56

Tgt Ion: 43 Resp: 6828
 Ion Ratio Lower Upper
 43 100
 58 30.3 27.8 41.8

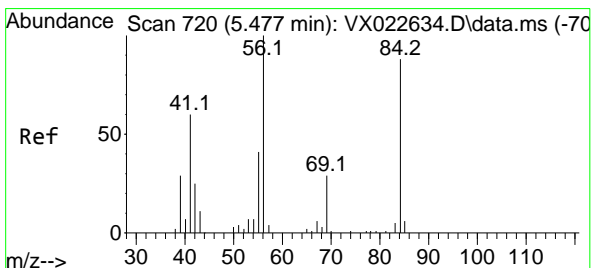
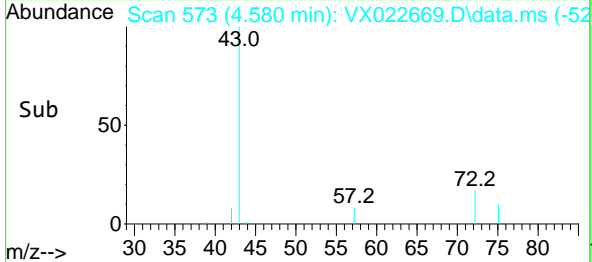
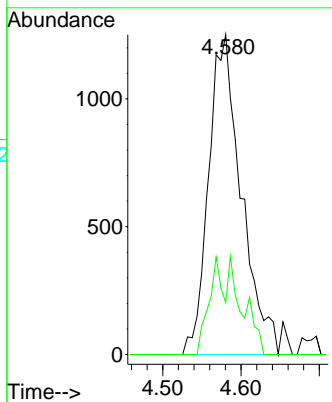
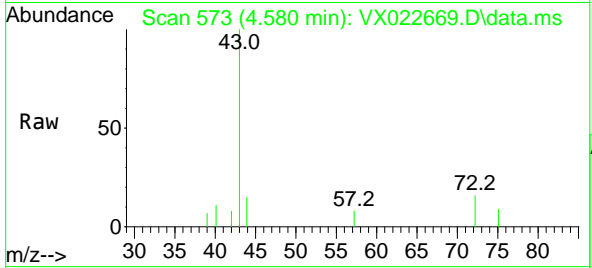




#25
 2-Butanone
 Concen: 4.732 ug/l
 RT: 4.580 min Scan# 573
 Delta R.T. 0.012 min
 Lab File: VX022669.D
 Acq: 11 Jun 2021 15:56

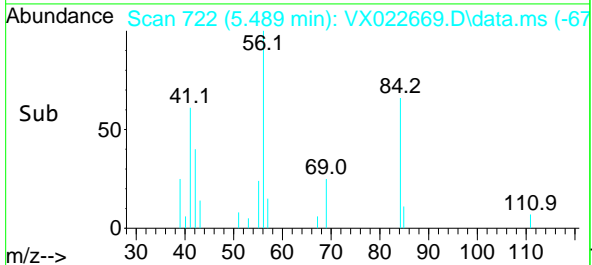
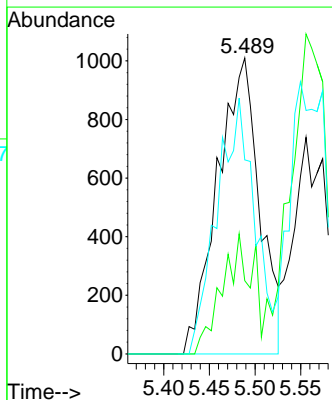
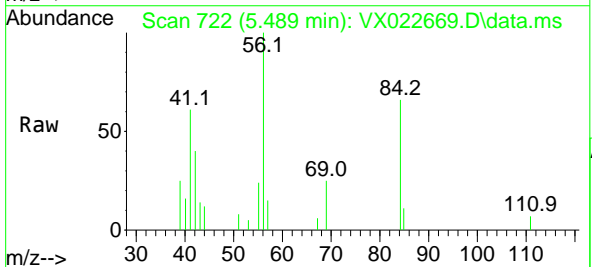
Instrument :
 MSVOA_X
 ClientSampled :
 MW-1

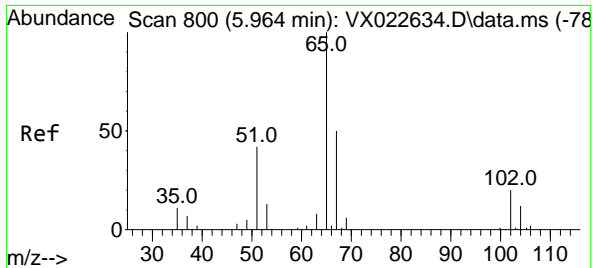
Tgt Ion: 43 Resp: 3626
 Ion Ratio Lower Upper
 43 100
 72 16.2 23.7 35.5#



#31
 Cyclohexane
 Concen: 2.533 ug/l
 RT: 5.489 min Scan# 722
 Delta R.T. 0.012 min
 Lab File: VX022669.D
 Acq: 11 Jun 2021 15:56

Tgt Ion: 56 Resp: 3224
 Ion Ratio Lower Upper
 56 100
 69 24.8 25.3 37.9#
 84 65.5 71.4 107.0#

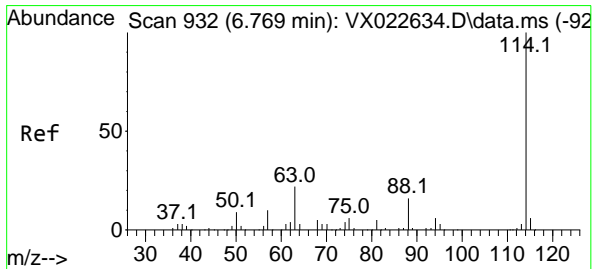
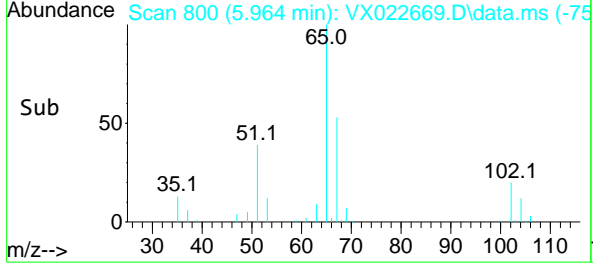
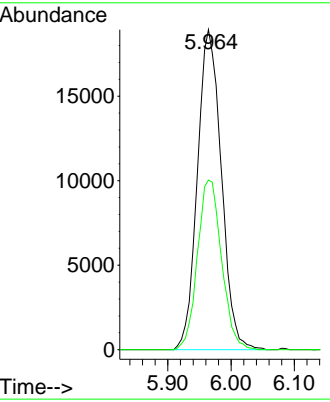
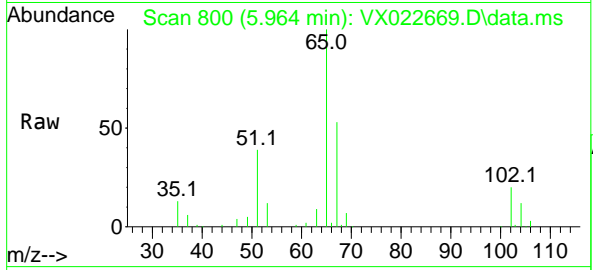




#33
 1,2-Dichloroethane-d4
 Concen: 47.109 ug/l
 RT: 5.964 min Scan# 800
 Delta R.T. 0.000 min
 Lab File: VX022669.D
 Acq: 11 Jun 2021 15:56

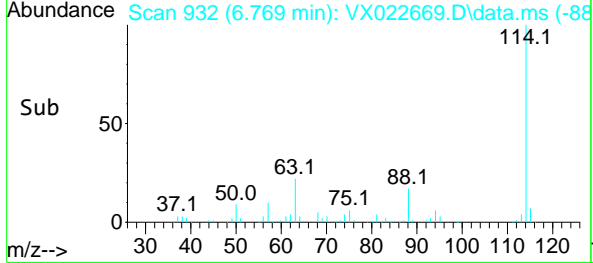
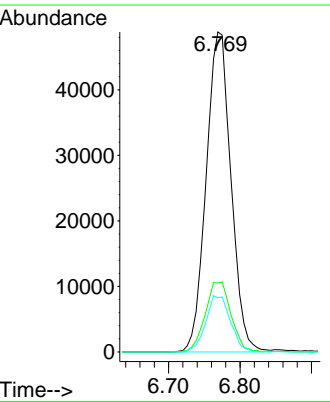
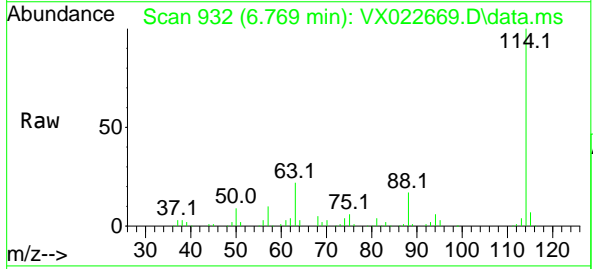
Instrument :
 MSVOA_X
 ClientSampled :
 MW-1

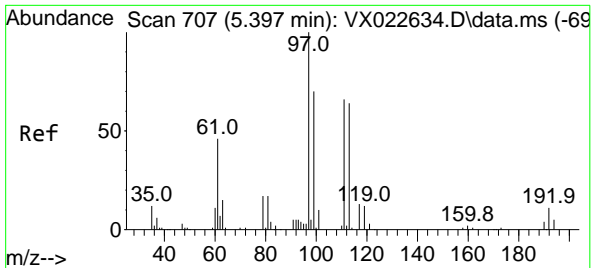
Tgt Ion: 65 Resp: 49705
 Ion Ratio Lower Upper
 65 100
 67 53.4 0.0 105.4



#34
 1,4-Difluorobenzene
 Concen: 50.000 ug/l
 RT: 6.769 min Scan# 932
 Delta R.T. -0.000 min
 Lab File: VX022669.D
 Acq: 11 Jun 2021 15:56

Tgt Ion:114 Resp: 117674
 Ion Ratio Lower Upper
 114 100
 63 21.6 0.0 40.8
 88 16.9 0.0 32.8

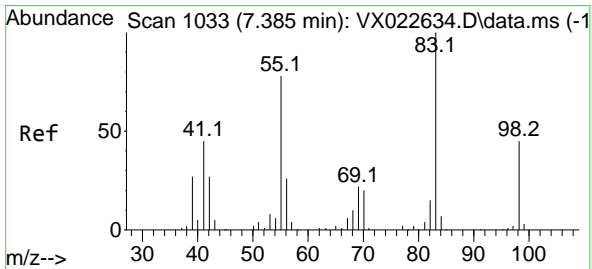
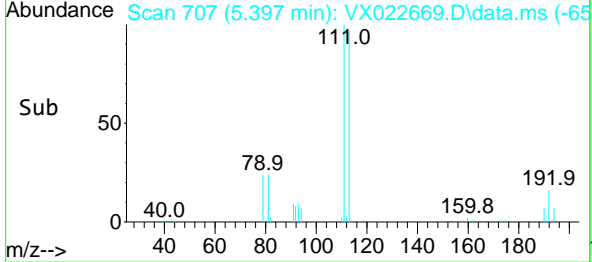
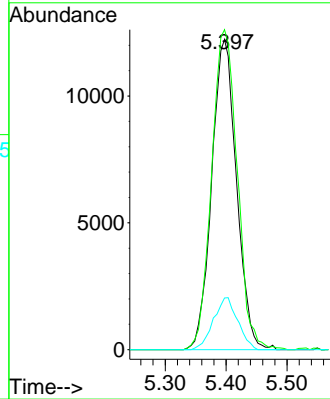
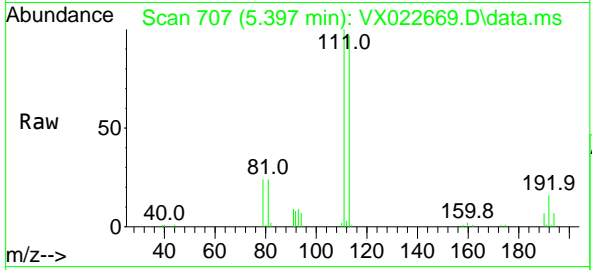




#35
 Dibromofluoromethane
 Concen: 46.098 ug/l
 RT: 5.397 min Scan# 707
 Delta R.T. 0.006 min
 Lab File: VX022669.D
 Acq: 11 Jun 2021 15:56

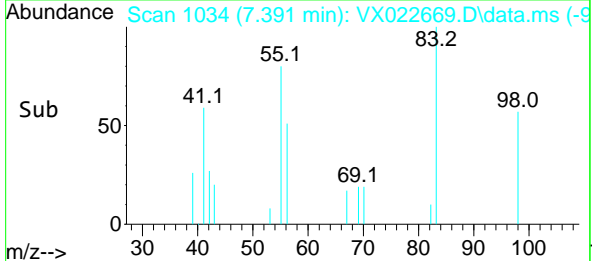
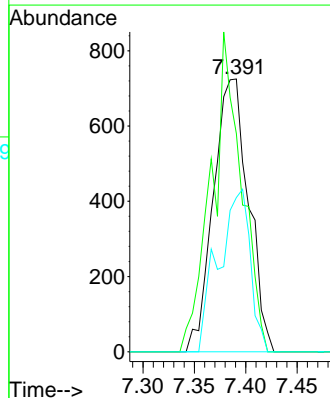
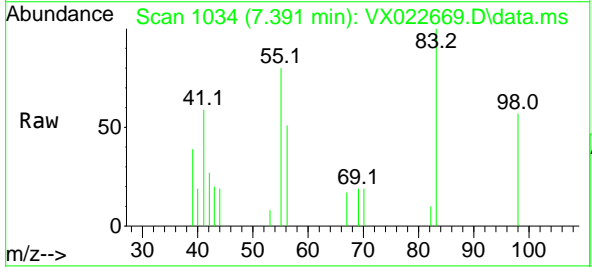
Instrument :
 MSVOA_X
 ClientSampled :
 MW-1

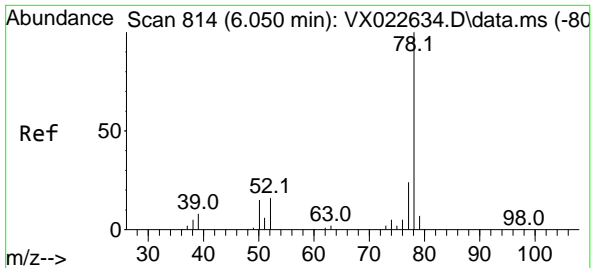
Tgt Ion:113 Resp: 34610
 Ion Ratio Lower Upper
 113 100
 111 106.7 81.9 122.9
 192 16.5 16.7 25.1#



#39
 Methylcyclohexane
 Concen: 1.412 ug/l
 RT: 7.391 min Scan# 1034
 Delta R.T. 0.006 min
 Lab File: VX022669.D
 Acq: 11 Jun 2021 15:56

Tgt Ion: 83 Resp: 1727
 Ion Ratio Lower Upper
 83 100
 55 80.0 58.9 88.3
 98 56.6 38.1 57.1

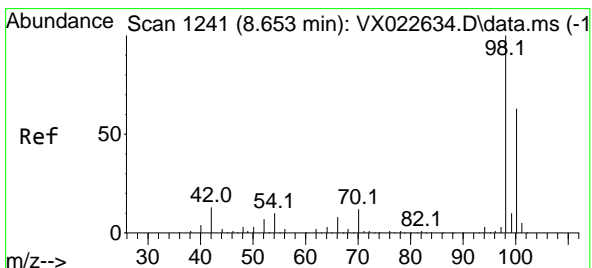
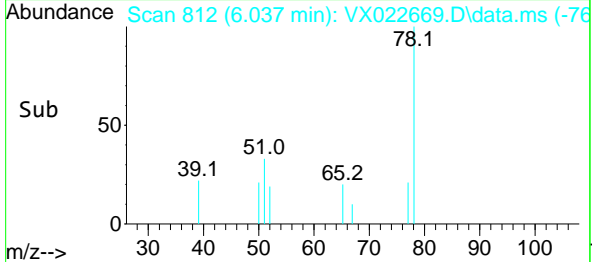
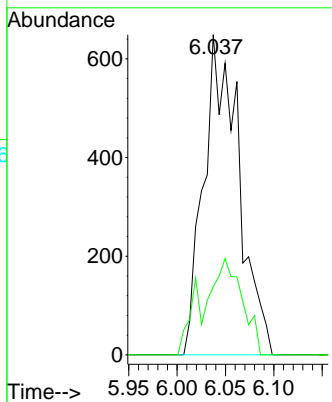
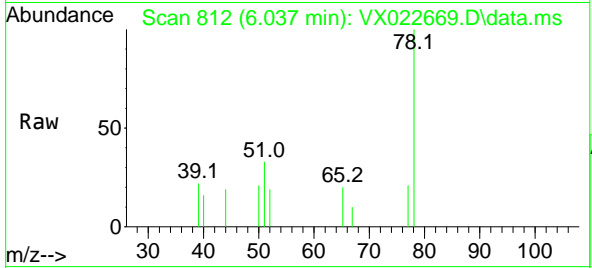




#40
Benzene
Concen: 0.468 ug/l
RT: 6.037 min Scan# 812
Delta R.T. -0.013 min
Lab File: VX022669.D
Acq: 11 Jun 2021 15:56

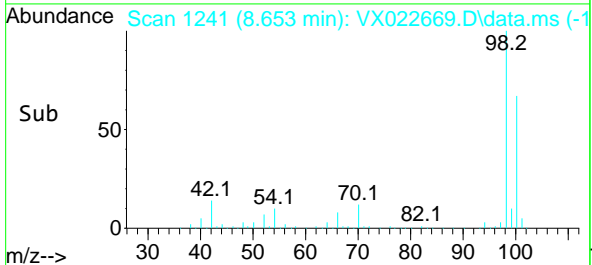
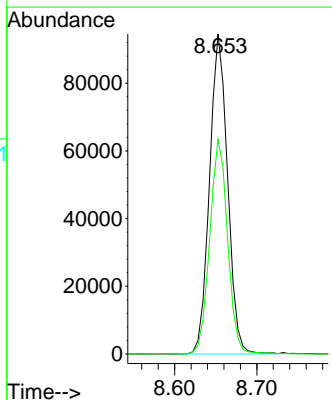
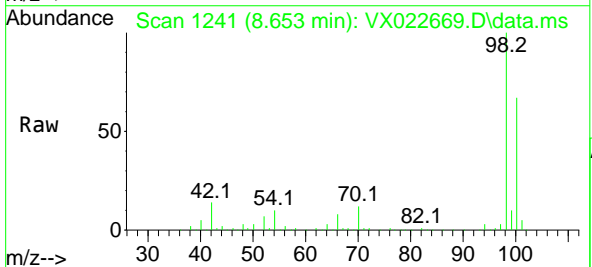
Instrument :
MSVOA_X
ClientSampled :
MW-1

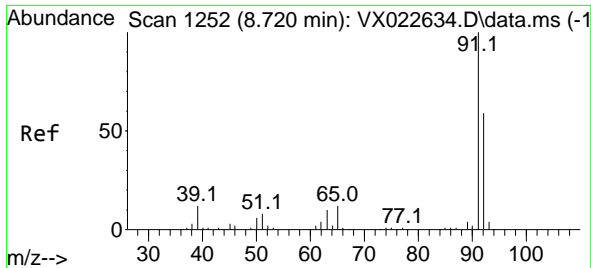
Tgt Ion: 78 Resp: 1632
Ion Ratio Lower Upper
78 100
77 21.3 18.9 28.3



#50
Toluene-d8
Concen: 48.677 ug/l
RT: 8.653 min Scan# 1241
Delta R.T. -0.000 min
Lab File: VX022669.D
Acq: 11 Jun 2021 15:56

Tgt Ion: 98 Resp: 144067
Ion Ratio Lower Upper
98 100
100 66.5 51.9 77.9

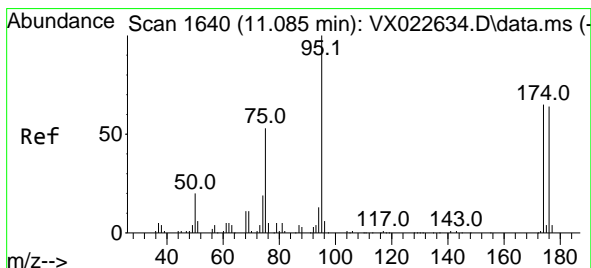
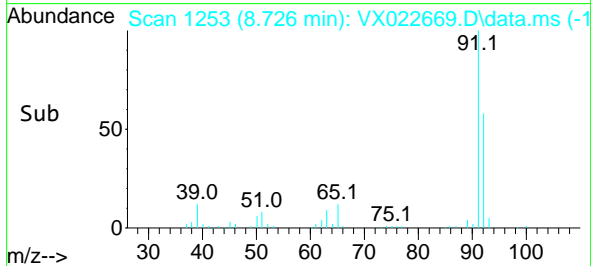
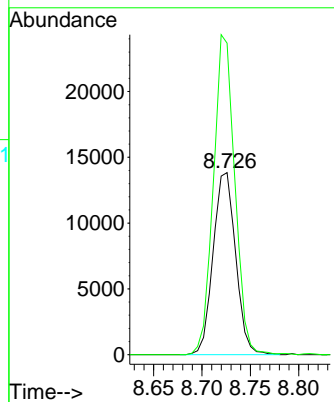
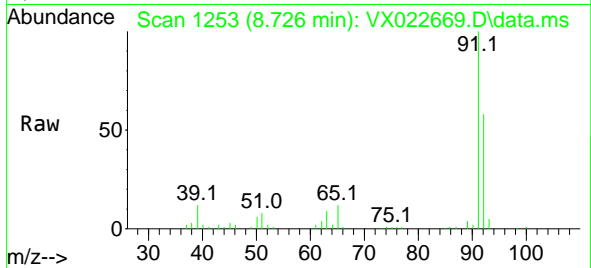




#52
 Toluene
 Concen: 10.310 ug/l
 RT: 8.726 min Scan# 1253
 Delta R.T. 0.006 min
 Lab File: VX022669.D
 Acq: 11 Jun 2021 15:56

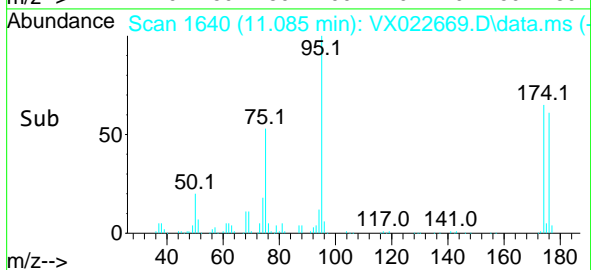
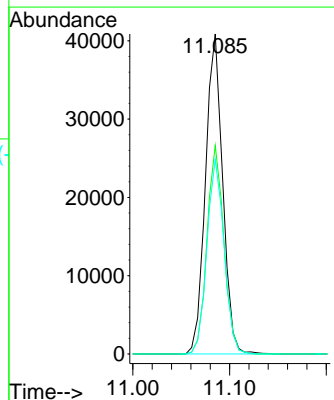
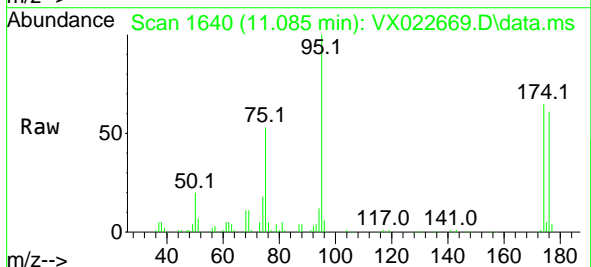
Instrument :
 MSVOA_X
 ClientSampled :
 MW-1

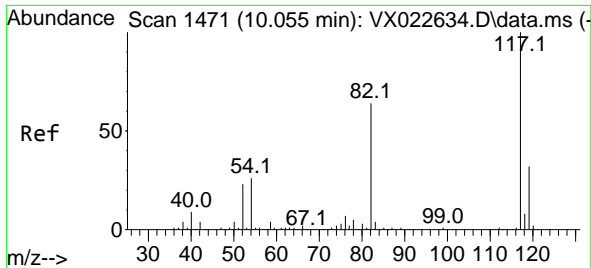
Tgt Ion: 92 Resp: 22383
 Ion Ratio Lower Upper
 92 100
 91 167.3 137.1 205.7



#62
 4-Bromofluorobenzene
 Concen: 45.213 ug/l
 RT: 11.085 min Scan# 1640
 Delta R.T. 0.000 min
 Lab File: VX022669.D
 Acq: 11 Jun 2021 15:56

Tgt Ion: 95 Resp: 50609
 Ion Ratio Lower Upper
 95 100
 174 63.7 0.0 154.6
 176 60.5 0.0 155.8

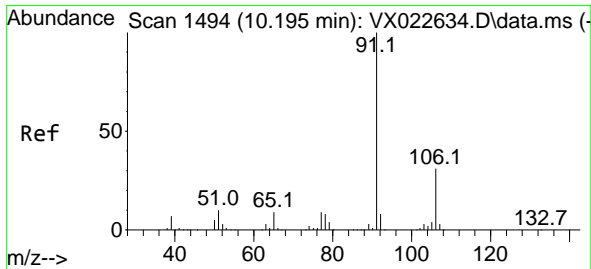
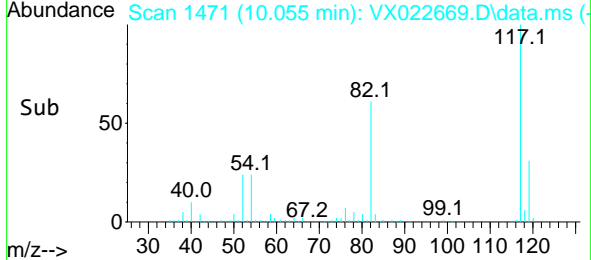
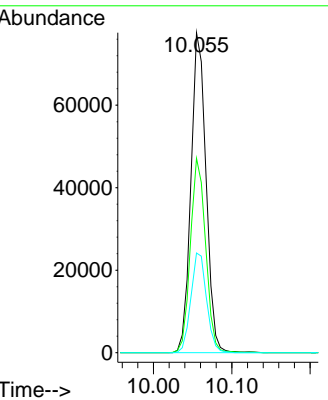
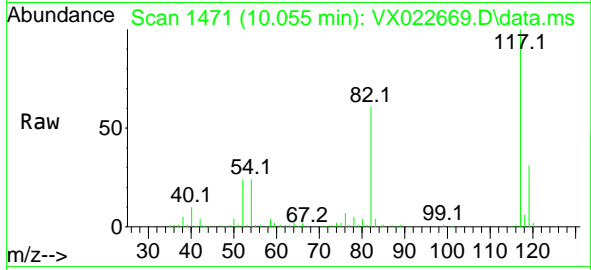




#63
 Chlorobenzene-d5
 Concen: 50.000 ug/l
 RT: 10.055 min Scan# 1471
 Delta R.T. -0.000 min
 Lab File: VX022669.D
 Acq: 11 Jun 2021 15:56

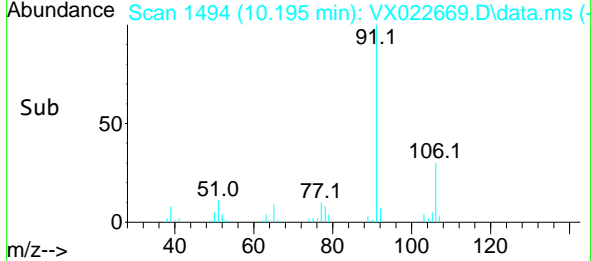
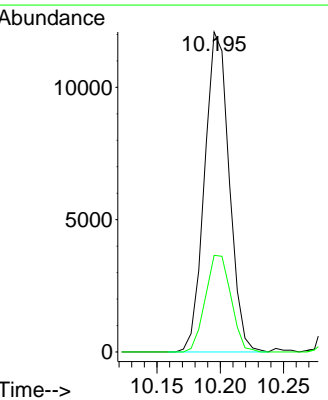
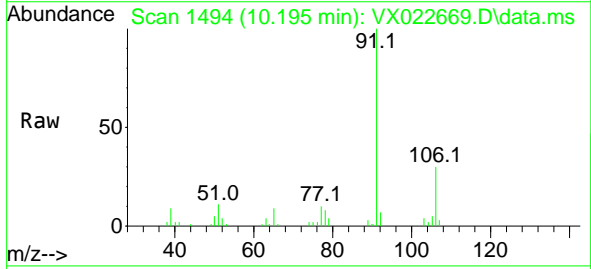
Instrument :
 MSVOA_X
ClientSampled :
 MW-1

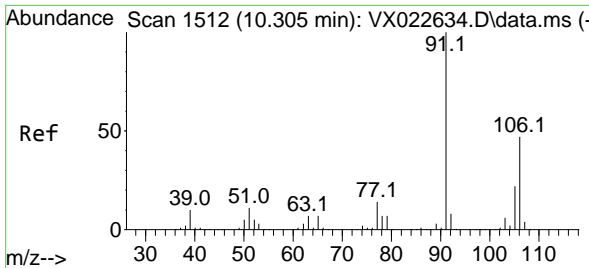
| Tgt Ion | Resp | Lower | Upper |
|---------|--------|-------|-------|
| 117 | 103724 | | |
| 82 | 60.8 | 47.4 | 71.2 |
| 119 | 31.1 | 26.6 | 39.8 |



#67
 Ethyl Benzene
 Concen: 4.109 ug/l
 RT: 10.195 min Scan# 1494
 Delta R.T. 0.000 min
 Lab File: VX022669.D
 Acq: 11 Jun 2021 15:56

| Tgt Ion | Resp | Lower | Upper |
|---------|-------|-------|-------|
| 91 | 16354 | | |
| 106 | 30.2 | 24.6 | 37.0 |

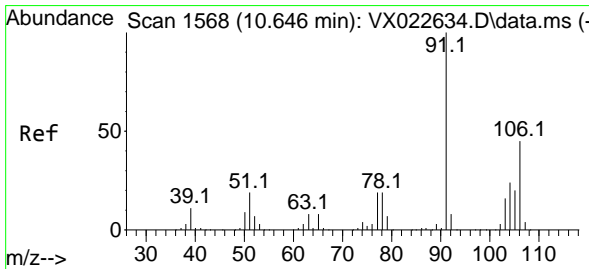
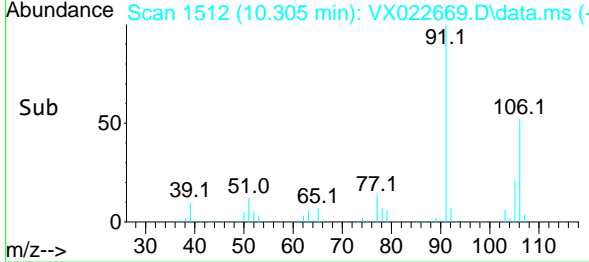
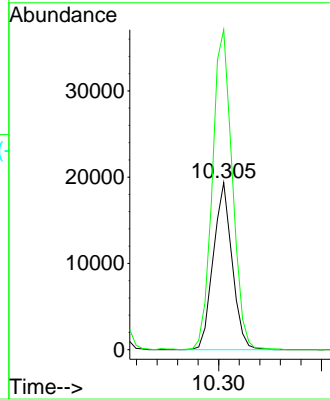
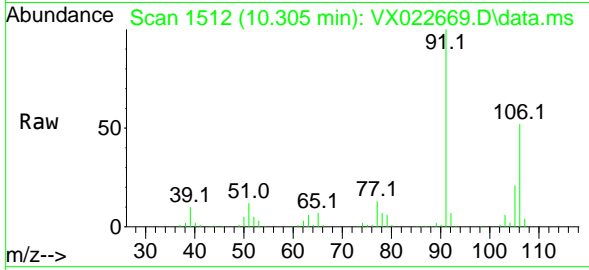




#68
 m/p-Xylenes
 Concen: 17.098 ug/l
 RT: 10.305 min Scan# 1512
 Delta R.T. -0.000 min
 Lab File: VX022669.D
 Acq: 11 Jun 2021 15:56

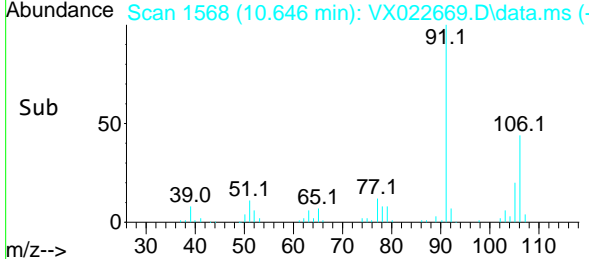
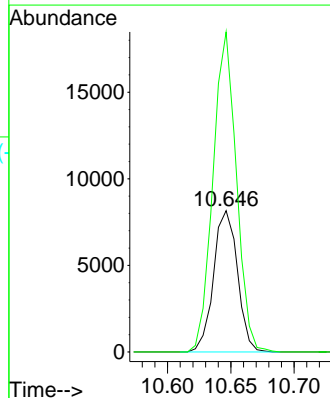
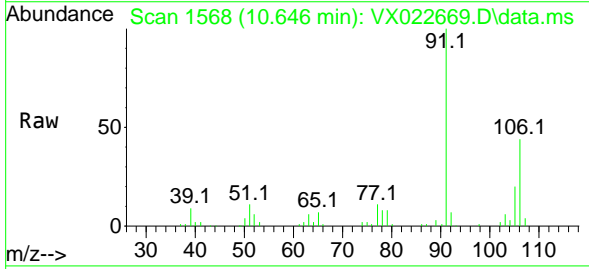
Instrument :
 MSVOA_X
 ClientSampled :
 MW-1

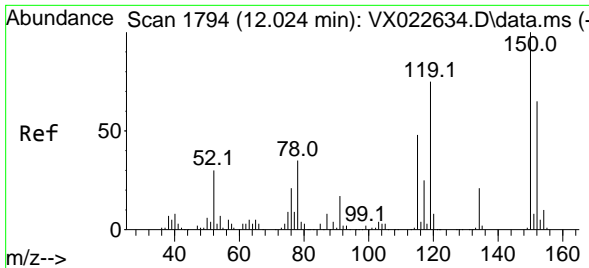
Tgt Ion:106 Resp: 24647
 Ion Ratio Lower Upper
 106 100
 91 202.6 162.8 244.2



#69
 o-Xylene
 Concen: 7.678 ug/l
 RT: 10.646 min Scan# 1568
 Delta R.T. 0.000 min
 Lab File: VX022669.D
 Acq: 11 Jun 2021 15:56

Tgt Ion:106 Resp: 10724
 Ion Ratio Lower Upper
 106 100
 91 221.5 108.1 324.2

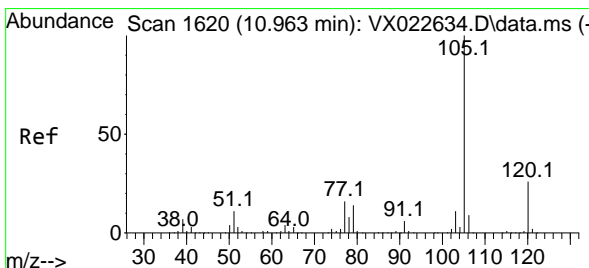
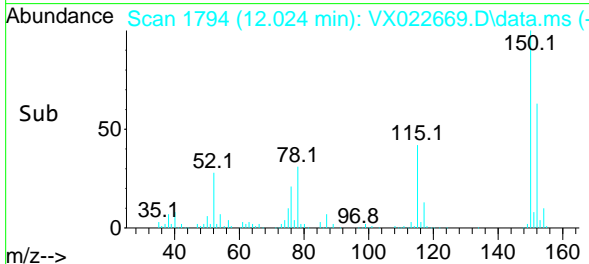
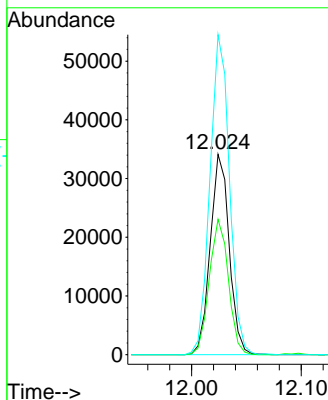
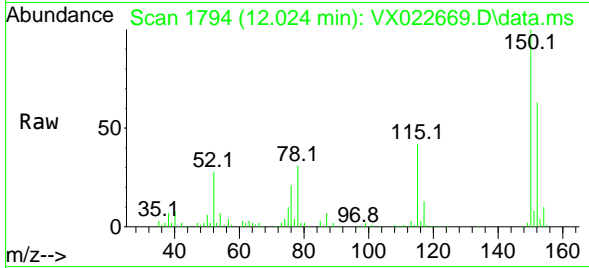




#72
 1,4-Dichlorobenzene-d4
 Concen: 50.000 ug/l
 RT: 12.024 min Scan# 1794
 Delta R.T. -0.000 min
 Lab File: VX022669.D
 Acq: 11 Jun 2021 15:56

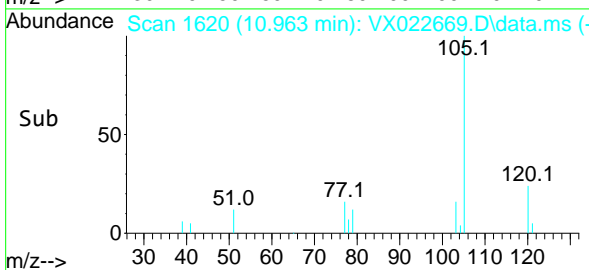
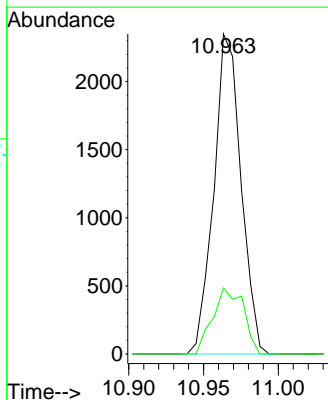
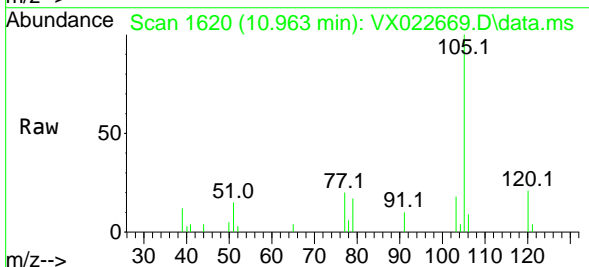
Instrument :
 MSVOA_X
 ClientSampled :
 MW-1

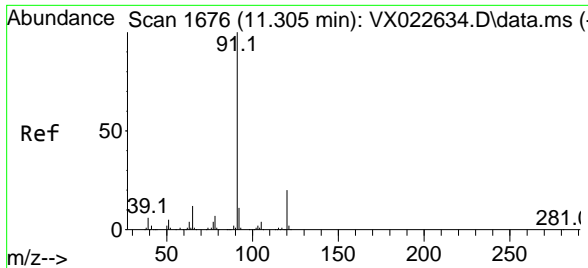
Tgt Ion:152 Resp: 41093
 Ion Ratio Lower Upper
 152 100
 115 67.8 41.1 123.3
 150 164.0 0.0 349.0



#73
 Isopropylbenzene
 Concen: 0.879 ug/l
 RT: 10.963 min Scan# 1620
 Delta R.T. 0.000 min
 Lab File: VX022669.D
 Acq: 11 Jun 2021 15:56

Tgt Ion:105 Resp: 2966
 Ion Ratio Lower Upper
 105 100
 120 23.3 13.2 39.6

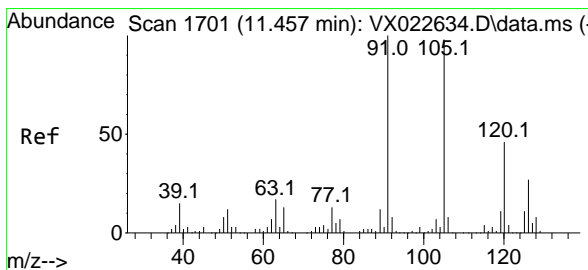
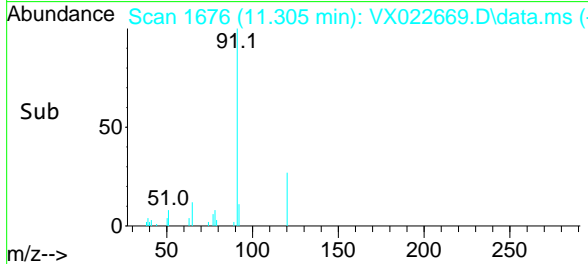
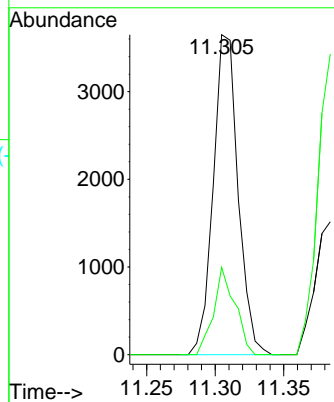
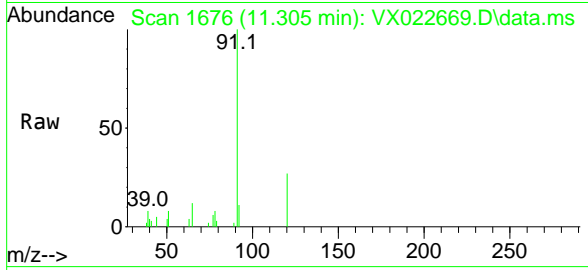




#78
 n-propylbenzene
 Concen: 1.127 ug/l
 RT: 11.305 min Scan# 1676
 Delta R.T. -0.000 min
 Lab File: VX022669.D
 Acq: 11 Jun 2021 15:56

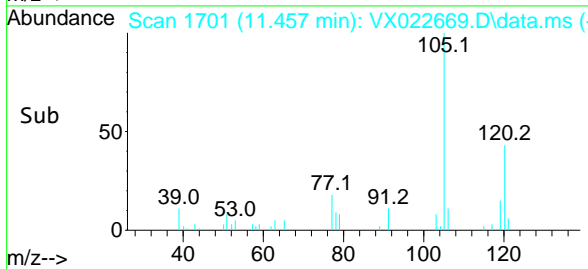
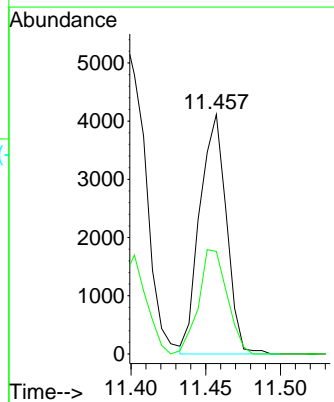
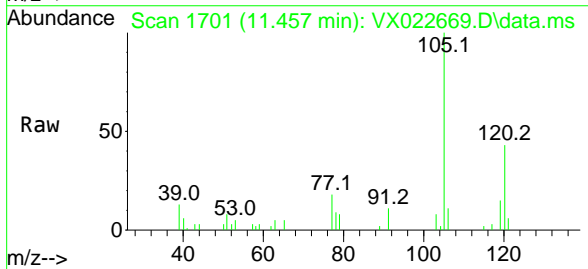
Instrument :
 MSVOA_X
 ClientSampled :
 MW-1

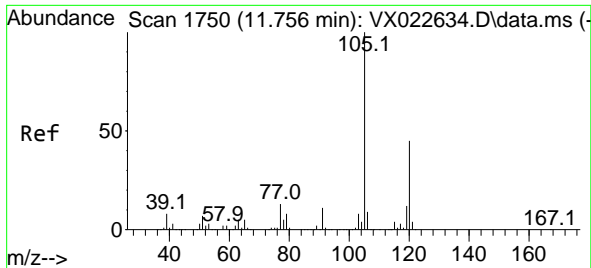
Tgt Ion: 91 Resp: 4593
 Ion Ratio Lower Upper
 91 100
 120 23.5 11.5 34.5



#80
 1,3,5-Trimethylbenzene
 Concen: 1.815 ug/l
 RT: 11.457 min Scan# 1701
 Delta R.T. 0.000 min
 Lab File: VX022669.D
 Acq: 11 Jun 2021 15:56

Tgt Ion: 105 Resp: 5101
 Ion Ratio Lower Upper
 105 100
 120 46.7 23.8 71.5

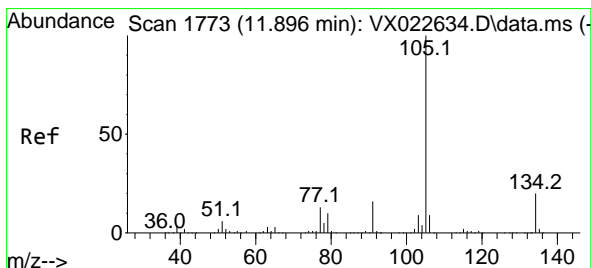
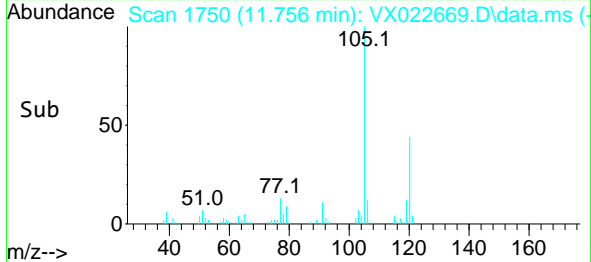
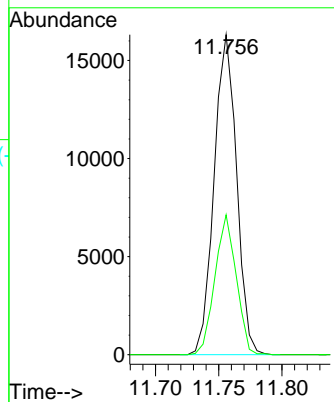
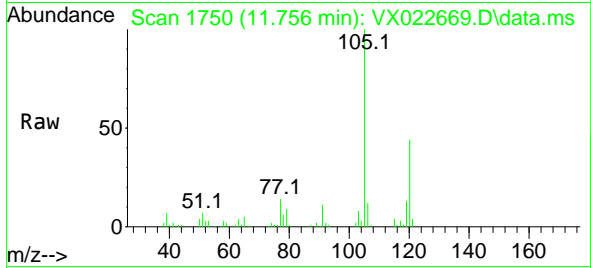




#84
 1,2,4-Trimethylbenzene
 Concen: 7.055 ug/l
 RT: 11.756 min Scan# 1750
 Delta R.T. -0.000 min
 Lab File: VX022669.D
 Acq: 11 Jun 2021 15:56

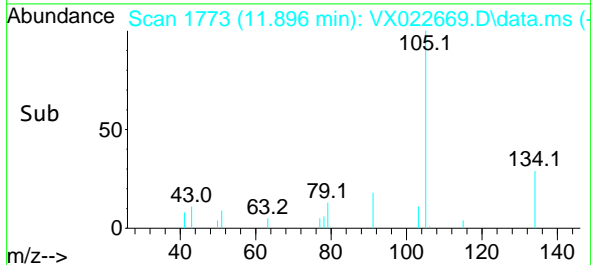
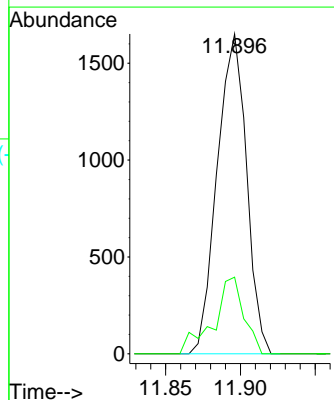
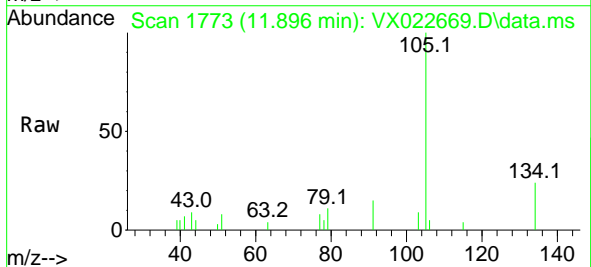
Instrument :
 MSVOA_X
 ClientSampled :
 MW-1

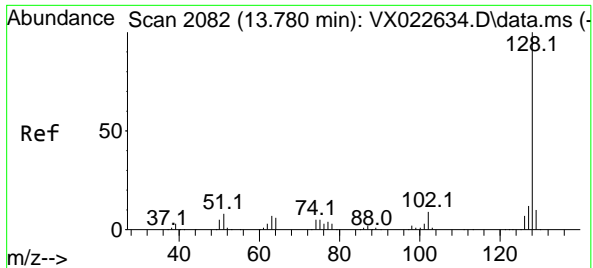
Tgt Ion:105 Resp: 20112
 Ion Ratio Lower Upper
 105 100
 120 41.5 22.4 67.3



#85
 sec-Butylbenzene
 Concen: 0.652 ug/l
 RT: 11.896 min Scan# 1773
 Delta R.T. 0.000 min
 Lab File: VX022669.D
 Acq: 11 Jun 2021 15:56

Tgt Ion:105 Resp: 2247
 Ion Ratio Lower Upper
 105 100
 134 24.8 10.0 29.8





#95
 Naphthalene
 Concen: 3.010 ug/l
 RT: 13.780 min Scan# 2082
 Delta R.T. -0.000 min
 Lab File: VX022669.D
 Acq: 11 Jun 2021 15:56

Instrument :
 MSVOA_X
 ClientSampled :
 MW-1

Tgt Ion:128 Resp: 5526

| Ion | Ratio | Lower | Upper |
|-----|-------|-------|-------|
| 128 | 100 | | |
| 127 | 14.4 | 10.3 | 15.5 |
| 129 | 12.8 | 8.8 | 13.2 |

