

Data Path : Z:\voasrv\HPCHEM1\MSVOA_X\Data\VX061223\
 Data File : VX036123.D
 Acq On : 12 Jun 2023 15:15
 Operator : JC/MD
 Sample : PB153331ZHE#03
 Misc : 5.0mL/MSVOA_X/WATER
 ALS Vial : 9 Sample Multiplier: 1

Instrument :
 MSVOA_X
 ClientSampleId :
 PB153331ZHE#03

Quant Time: Jun 13 04:49:39 2023
 Quant Method : Z:\voasrv\HPCHEM1\MSVOA_X\Method\82X053123W.M
 Quant Title : SW846 8260
 QLast Update : Wed May 31 12:50:30 2023
 Response via : Initial Calibration

Compound	R.T.	QIon	Response	Conc	Units	Dev(Min)

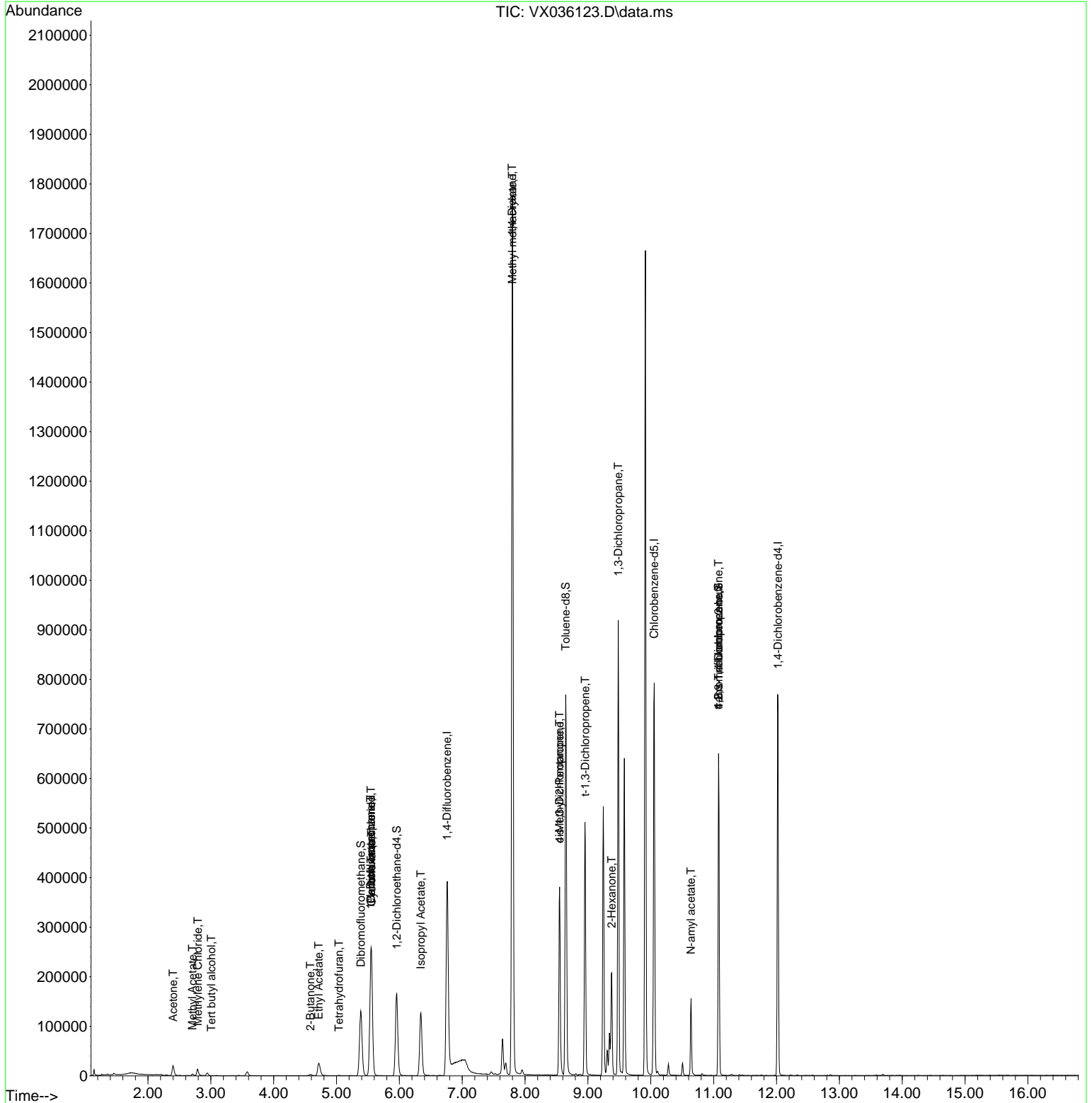
Internal Standards						
1) Pentafluorobenzene	5.550	168	220698	50.000	ug/l	0.00
34) 1,4-Difluorobenzene	6.757	114	363554	50.000	ug/l	0.00
63) Chlorobenzene-d5	10.055	117	331550	50.000	ug/l	0.00
72) 1,4-Dichlorobenzene-d4	12.024	152	148788	50.000	ug/l	0.00
System Monitoring Compounds						
33) 1,2-Dichloroethane-d4	5.958	65	168062	46.895	ug/l	0.00
Spiked Amount	50.000	Range	78 - 117	Recovery	=	93.780%
35) Dibromofluoromethane	5.385	113	113329	46.347	ug/l	0.00
Spiked Amount	50.000	Range	75 - 124	Recovery	=	92.700%
50) Toluene-d8	8.647	98	435252	49.597	ug/l	0.00
Spiked Amount	50.000	Range	92 - 112	Recovery	=	99.200%
62) 4-Bromofluorobenzene	11.079	95	169968	49.062	ug/l	0.00
Spiked Amount	50.000	Range	83 - 123	Recovery	=	98.120%
Target Compounds						
						Qvalue
11) Tert butyl alcohol	3.008	59	182	0.286	ug/l #	78
16) Acetone	2.398	43	28340	19.168	ug/l	99
18) Methyl Acetate	2.709	43	4450	0.774	ug/l	96
20) Methylene Chloride	2.794	84	6647	2.334	ug/l #	85
25) 2-Butanone	4.587	43	2122	1.003	ug/l #	87
29) Tetrahydrofuran	5.038	42	657	0.482	ug/l #	47
31) Cyclohexane	5.556	56	5921	1.578	ug/l #	15
36) 1,1-Dichloropropene	5.544	75	21590	6.622	ug/l #	51
37) Ethyl Acetate	4.715	43	47376	13.048	ug/l	98
38) Carbon Tetrachloride	5.550	117	26157	8.233	ug/l #	17
43) Isopropyl Acetate	6.342	43	179007	29.983	ug/l	99
48) Methyl methacrylate	7.799	41	161100	55.023	ug/l #	49
49) 1,4-Dioxane	7.793	88	305	4.548	ug/l #	1
51) 4-Methyl-2-Pentanone	8.549	43	137791	37.810	ug/l #	50
53) t-1,3-Dichloropropene	8.958	75	1231	0.346	ug/l #	43
54) cis-1,3-Dichloropropene	8.549	75	56271	14.324	ug/l #	60
57) 1,3-Dichloropropane	9.482	76	7553	1.712	ug/l #	42
59) 2-Hexanone	9.378	43	163129	60.546	ug/l #	26
74) N-amyl acetate	10.640	43	41679	8.844	ug/l #	53
76) 1,2,3-Trichloropropane	11.079	75	94570	28.181	ug/l #	35
81) trans-1,4-Dichloro-2-b...	11.079	75	94570	94.922	ug/l #	3

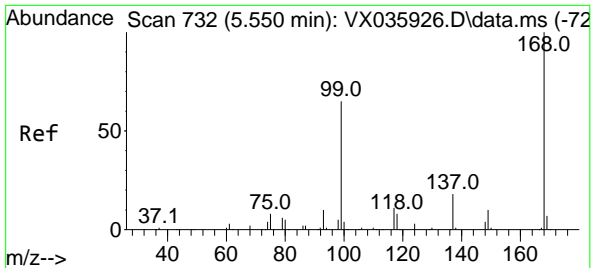
(#) = qualifier out of range (m) = manual integration (+) = signals summed

Data Path : Z:\voasrv\HPCHEM1\MSVOA_X\Data\VX061223\
 Data File : VX036123.D
 Acq On : 12 Jun 2023 15:15
 Operator : JC/MD
 Sample : PB153331ZHE#03
 Misc : 5.0mL/MSVOA_X/WATER
 ALS Vial : 9 Sample Multiplier: 1

Instrument :
 MSVOA_X
 ClientSampleId :
 PB153331ZHE#03

Quant Time: Jun 13 04:49:39 2023
 Quant Method : Z:\voasrv\HPCHEM1\MSVOA_X\Method\82X053123W.M
 Quant Title : SW846 8260
 QLast Update : Wed May 31 12:50:30 2023
 Response via : Initial Calibration

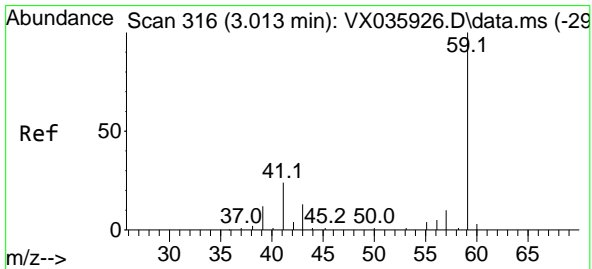
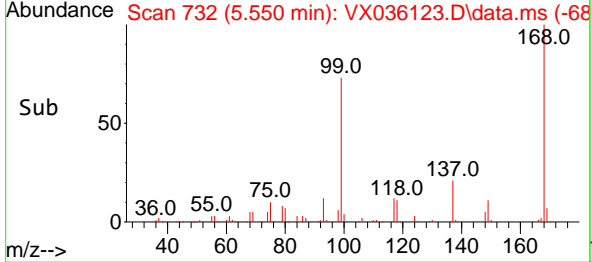
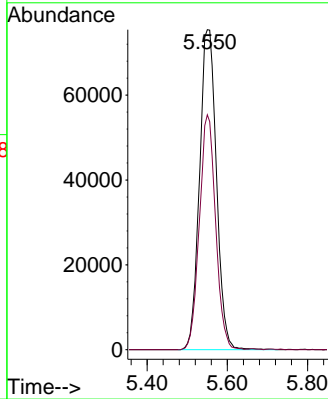
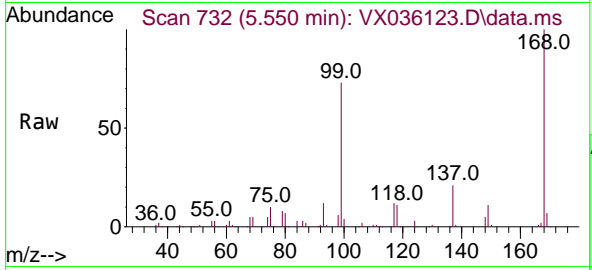




#1
 Pentafluorobenzene
 Concen: 50.000 ug/l
 RT: 5.550 min Scan# 71
 Delta R.T. 0.001 min
 Lab File: VX036123.D
 Acq: 12 Jun 2023 15:15

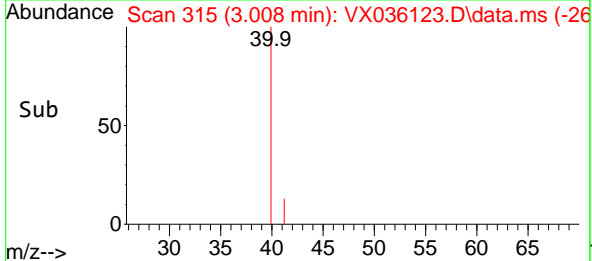
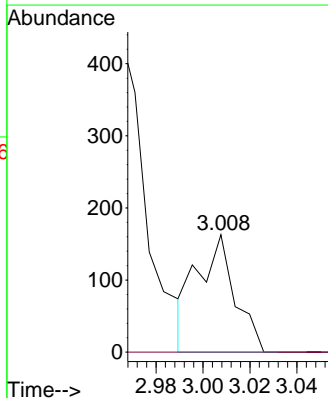
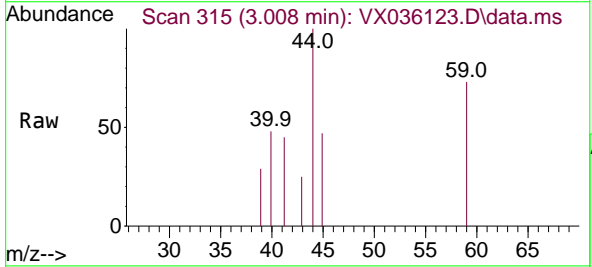
Instrument : MSVOA_X
 ClientSampleId : PB153331ZHE#03

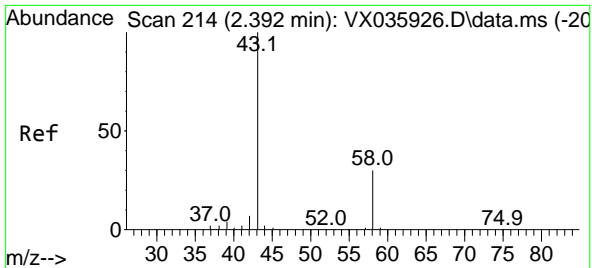
Tgt Ion:168 Resp: 220698
 Ion Ratio Lower Upper
 168 100
 99 73.4 57.0 85.6



#11
 Tert butyl alcohol
 Concen: 0.286 ug/l
 RT: 3.008 min Scan# 315
 Delta R.T. 0.001 min
 Lab File: VX036123.D
 Acq: 12 Jun 2023 15:15

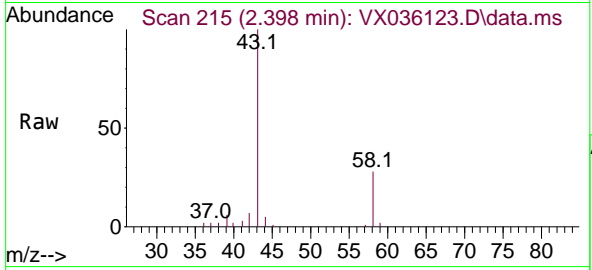
Tgt Ion: 59 Resp: 182
 Ion Ratio Lower Upper
 59 100
 57 0.0 6.0 9.0#



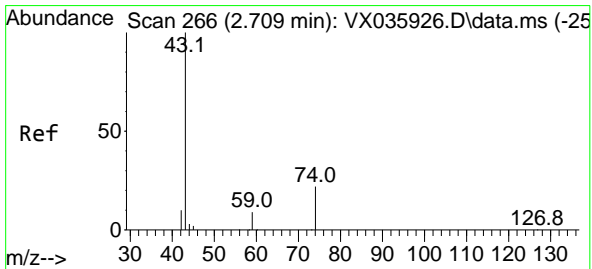
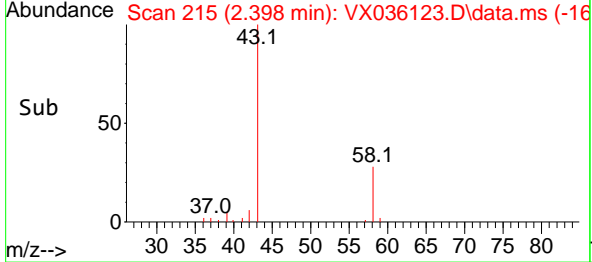
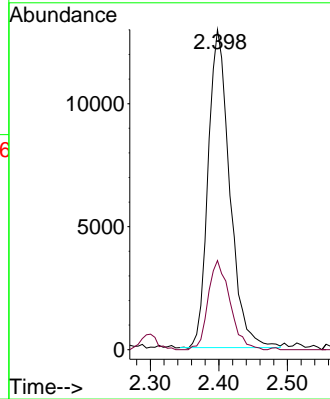


#16
 Acetone
 Concen: 19.168 ug/l
 RT: 2.398 min Scan# 214
 Delta R.T. 0.007 min
 Lab File: VX036123.D
 Acq: 12 Jun 2023 15:15

Instrument : MSVOA_X
 ClientSampleId : PB153331ZHE#03

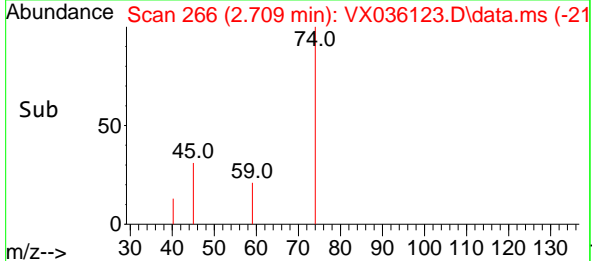
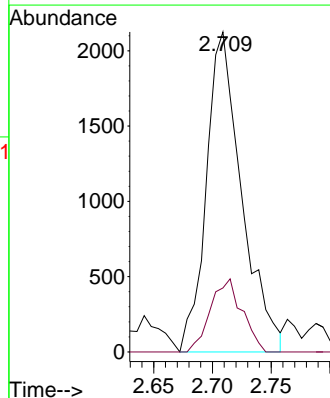
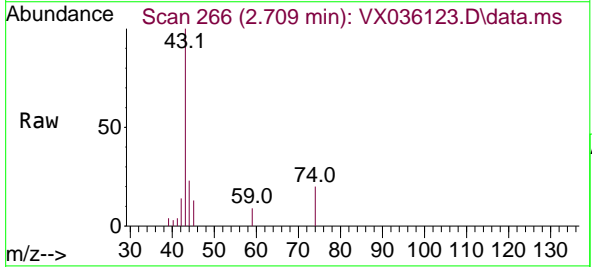


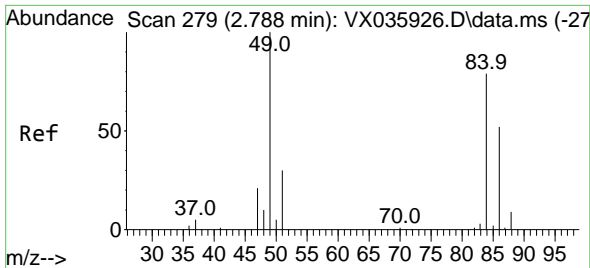
Tgt Ion: 43 Resp: 28340
 Ion Ratio Lower Upper
 43 100
 58 28.0 22.2 33.2



#18
 Methyl Acetate
 Concen: 0.774 ug/l
 RT: 2.709 min Scan# 266
 Delta R.T. 0.007 min
 Lab File: VX036123.D
 Acq: 12 Jun 2023 15:15

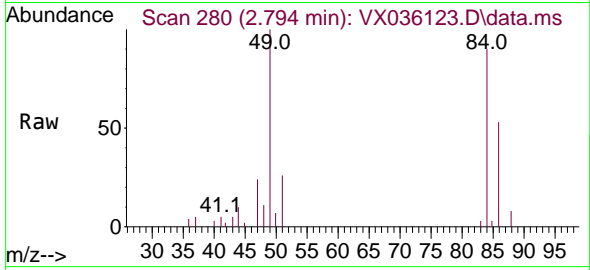
Tgt Ion: 43 Resp: 4450
 Ion Ratio Lower Upper
 43 100
 74 20.4 17.7 26.5





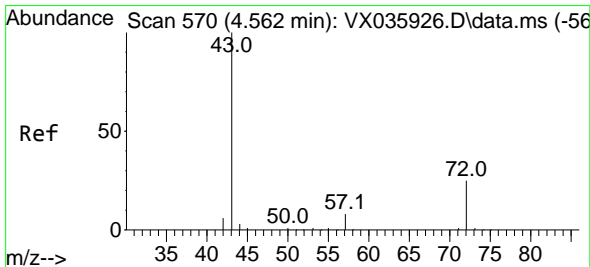
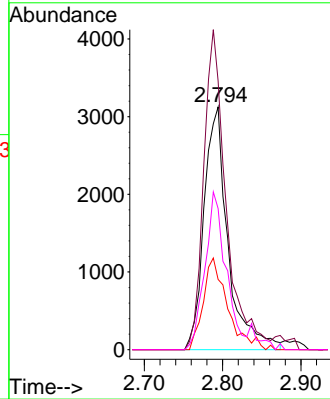
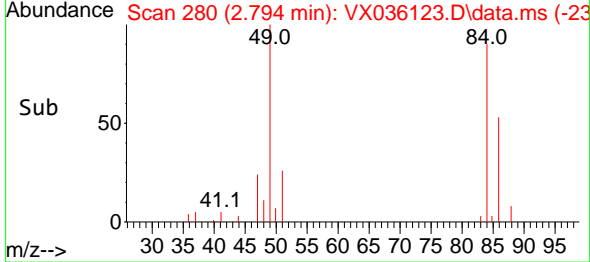
#20
 Methylene Chloride
 Concen: 2.334 ug/l
 RT: 2.794 min Scan# 21
 Delta R.T. 0.006 min
 Lab File: VX036123.D
 Acq: 12 Jun 2023 15:15

Instrument : MSVOA_X
 ClientSampleId : PB153331ZHE#03

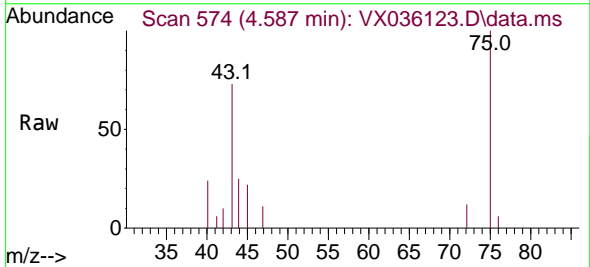


Tgt Ion: 84 Resp: 6647

Ion	Ratio	Lower	Upper
84	100		
49	110.7	104.6	156.8
51	28.9	32.2	48.4#
86	58.1	52.4	78.6

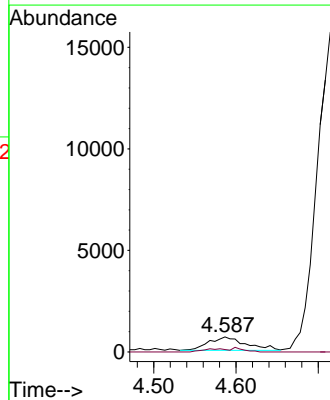
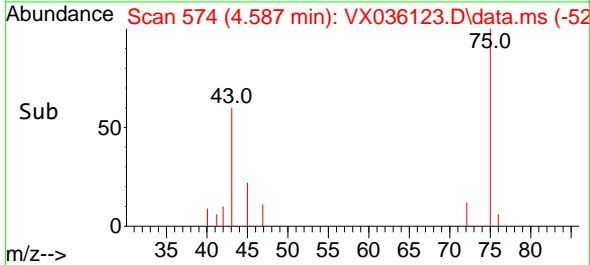


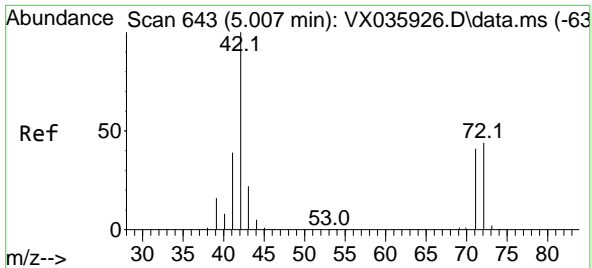
#25
 2-Butanone
 Concen: 1.003 ug/l
 RT: 4.587 min Scan# 574
 Delta R.T. 0.025 min
 Lab File: VX036123.D
 Acq: 12 Jun 2023 15:15



Tgt Ion: 43 Resp: 2122

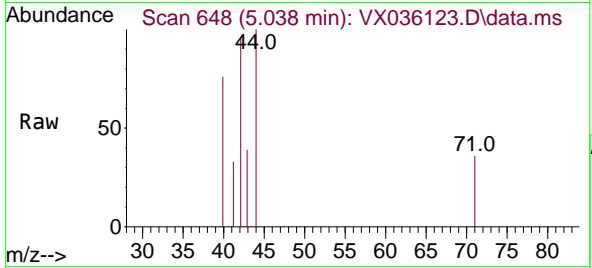
Ion	Ratio	Lower	Upper
43	100		
72	17.8	19.4	29.2#





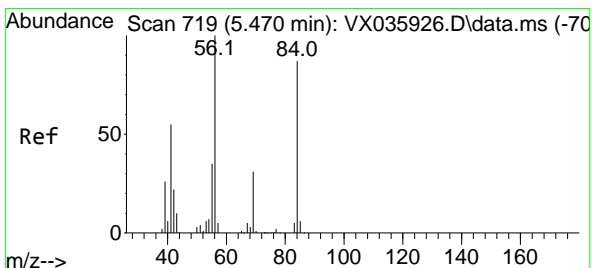
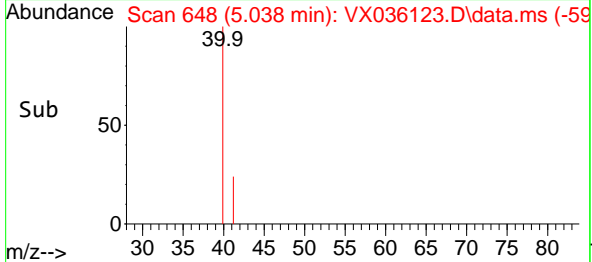
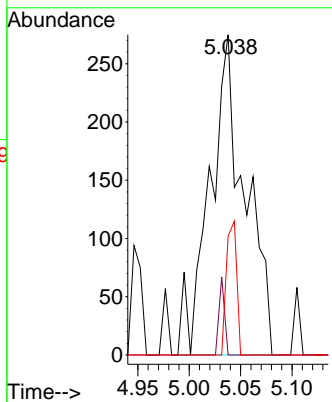
#29
 Tetrahydrofuran
 Concen: 0.482 ug/l
 RT: 5.038 min Scan# 64
 Delta R.T. 0.025 min
 Lab File: VX036123.D
 Acq: 12 Jun 2023 15:15

Instrument : MSVOA_X
 ClientSampleId : PB153331ZHE#03

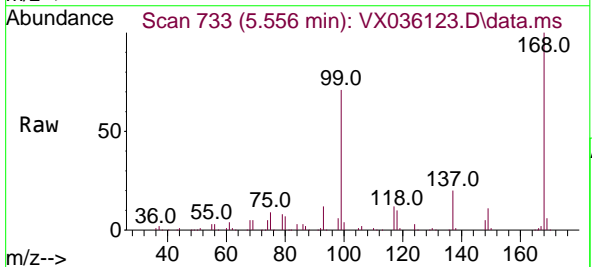


Tgt Ion: 42 Resp: 657

Ion	Ratio	Lower	Upper
42	100		
72	3.8	34.2	51.2#
71	12.0	31.8	47.8#

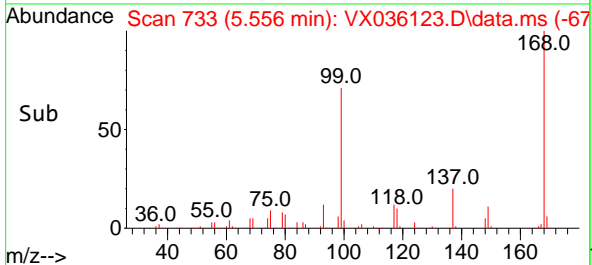
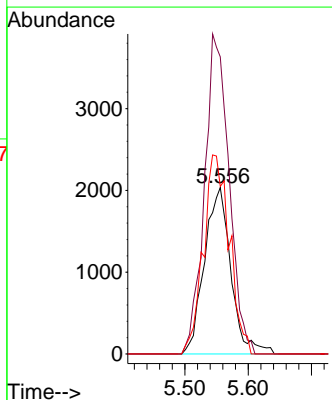


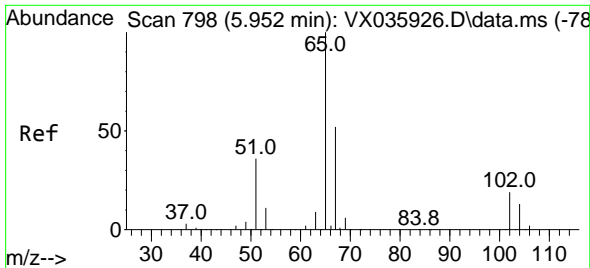
#31
 Cyclohexane
 Concen: 1.578 ug/l
 RT: 5.556 min Scan# 733
 Delta R.T. 0.086 min
 Lab File: VX036123.D
 Acq: 12 Jun 2023 15:15



Tgt Ion: 56 Resp: 5921

Ion	Ratio	Lower	Upper
56	100		
69	178.6	25.9	38.9#
84	100.6	67.6	101.4

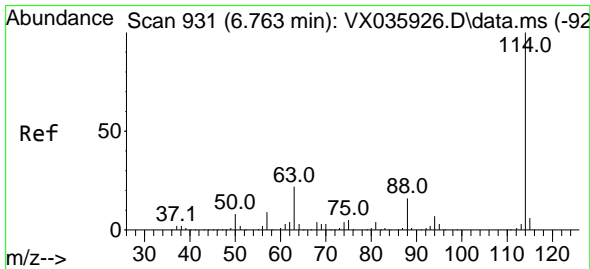
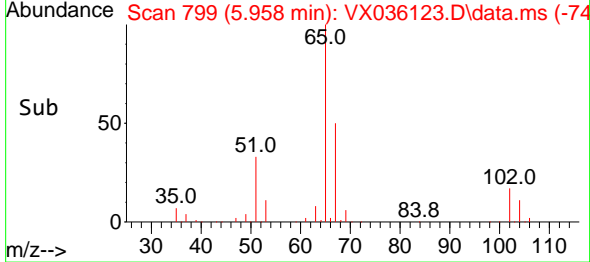
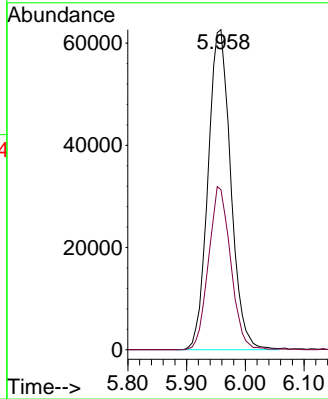
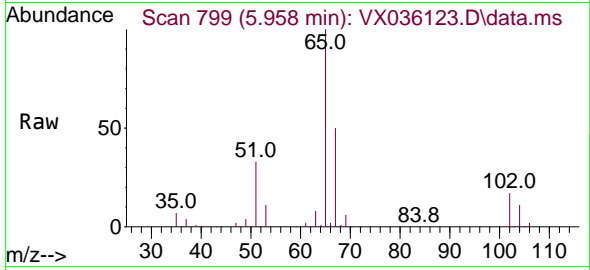




#33
 1,2-Dichloroethane-d4
 Concen: 46.895 ug/l
 RT: 5.958 min Scan# 798
 Delta R.T. 0.006 min
 Lab File: VX036123.D
 Acq: 12 Jun 2023 15:15

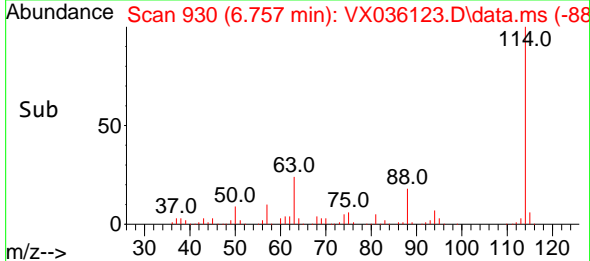
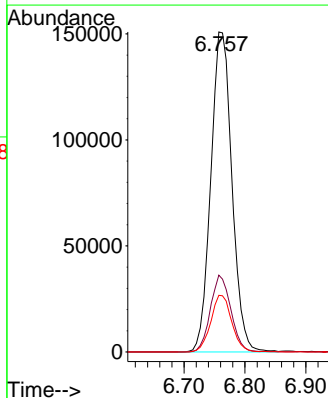
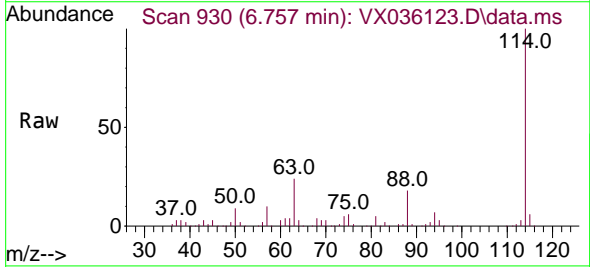
Instrument : MSVOA_X
 ClientSampleId : PB153331ZHE#03

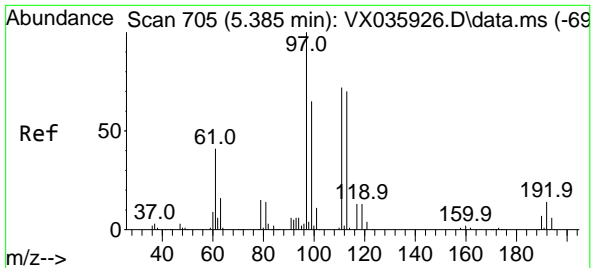
Tgt Ion: 65 Resp: 168062
 Ion Ratio Lower Upper
 65 100
 67 49.7 0.0 99.6



#34
 1,4-Difluorobenzene
 Concen: 50.000 ug/l
 RT: 6.757 min Scan# 930
 Delta R.T. -0.006 min
 Lab File: VX036123.D
 Acq: 12 Jun 2023 15:15

Tgt Ion: 114 Resp: 363554
 Ion Ratio Lower Upper
 114 100
 63 24.0 0.0 46.0
 88 17.7 0.0 35.2



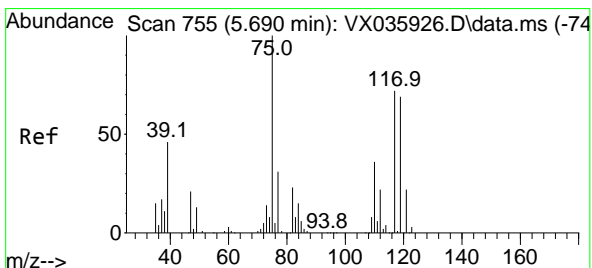
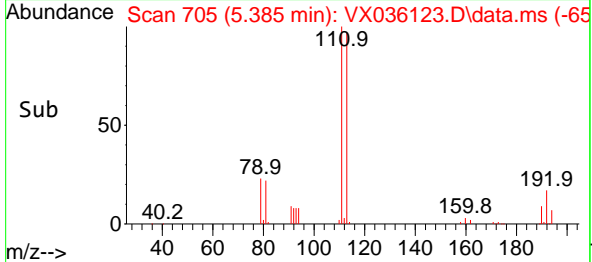
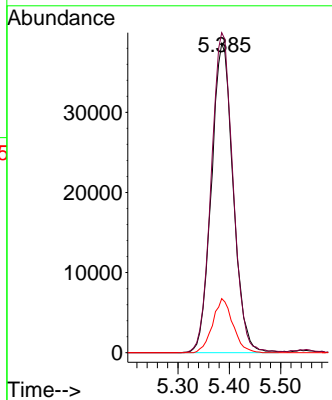
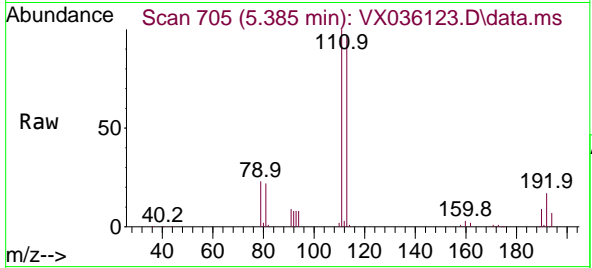


#35
 Dibromofluoromethane
 Concen: 46.347 ug/l
 RT: 5.385 min Scan# 705
 Delta R.T. 0.000 min
 Lab File: VX036123.D
 Acq: 12 Jun 2023 15:15

Instrument : MSVOA_X
 ClientSampleId : PB153331ZHE#03

Tgt Ion:113 Resp: 113329

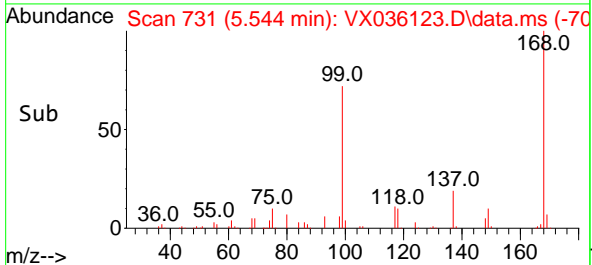
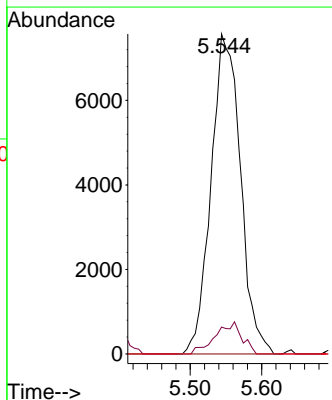
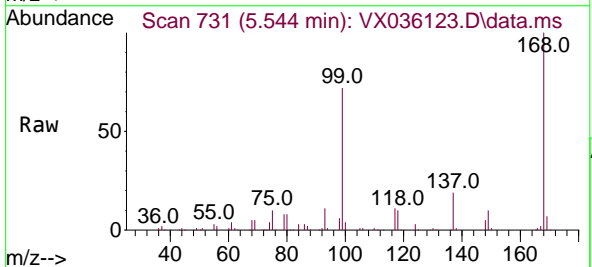
Ion	Ratio	Lower	Upper
113	100		
111	103.6	81.7	122.5
192	16.3	13.5	20.3

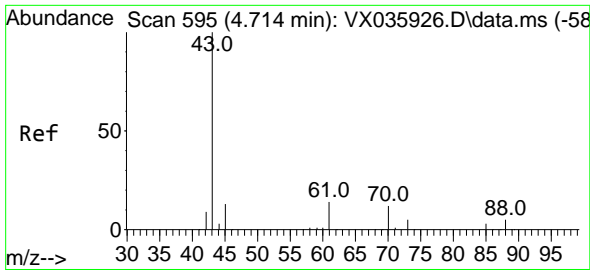


#36
 1,1-Dichloropropene
 Concen: 6.622 ug/l
 RT: 5.544 min Scan# 731
 Delta R.T. -0.146 min
 Lab File: VX036123.D
 Acq: 12 Jun 2023 15:15

Tgt Ion: 75 Resp: 21590

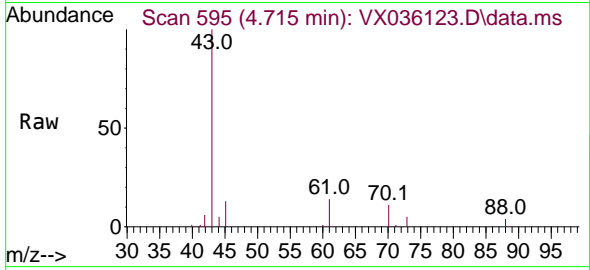
Ion	Ratio	Lower	Upper
75	100		
110	9.0	16.6	49.7#
77	0.0	24.4	36.6#



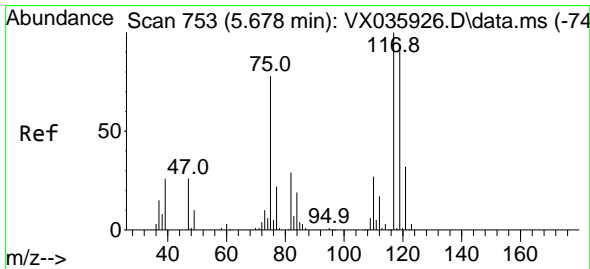
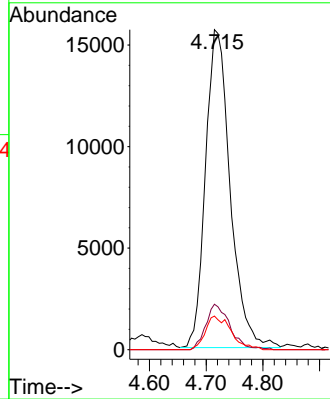
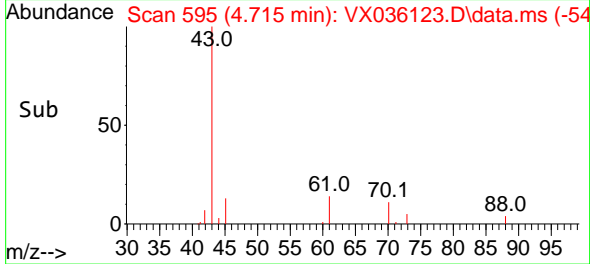


#37
 Ethyl Acetate
 Concen: 13.048 ug/l
 RT: 4.715 min Scan# 595
 Delta R.T. 0.007 min
 Lab File: VX036123.D
 Acq: 12 Jun 2023 15:15

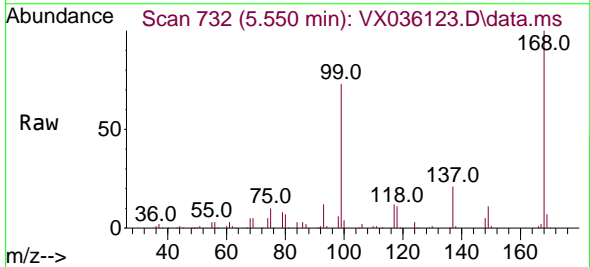
Instrument : MSVOA_X
 ClientSampleId : PB153331ZHE#03



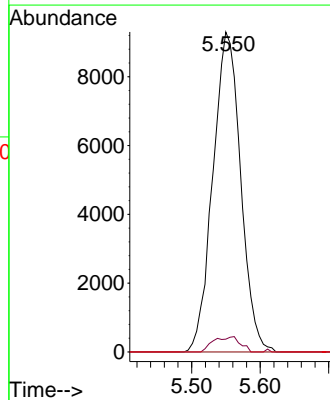
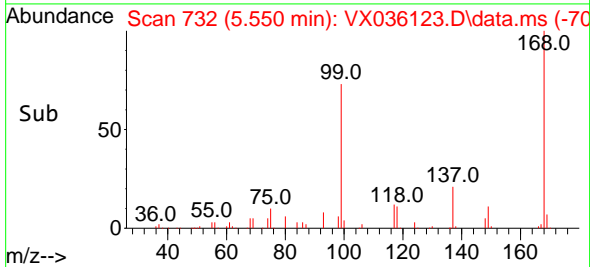
Tgt Ion	Resp	Lower	Upper
43	47376		
61	13.9	10.3	15.5
70	11.0	8.3	12.5

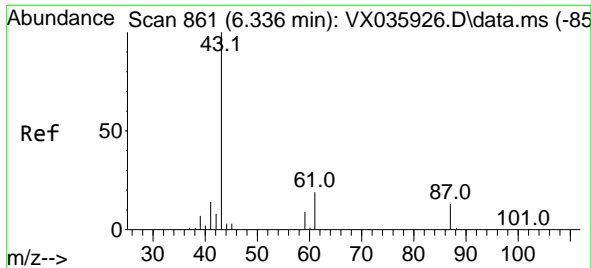


#38
 Carbon Tetrachloride
 Concen: 8.233 ug/l
 RT: 5.550 min Scan# 732
 Delta R.T. -0.127 min
 Lab File: VX036123.D
 Acq: 12 Jun 2023 15:15



Tgt Ion	Resp	Lower	Upper
117	26157		
119	4.0	74.1	111.1#
121	0.0	25.0	37.4#

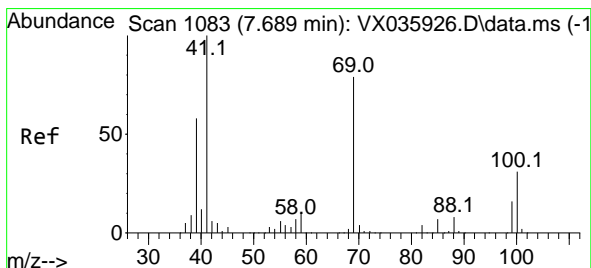
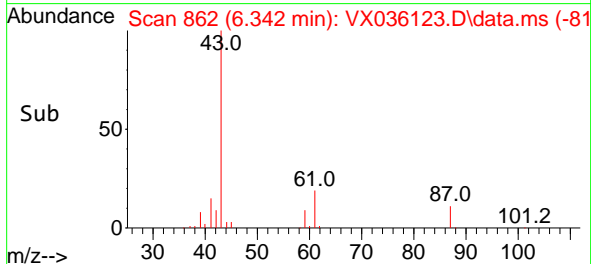
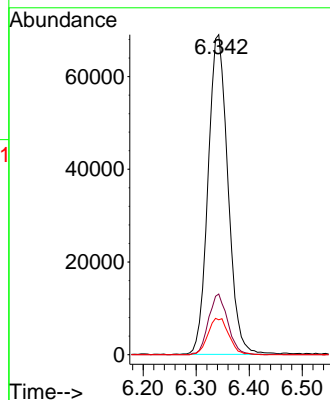
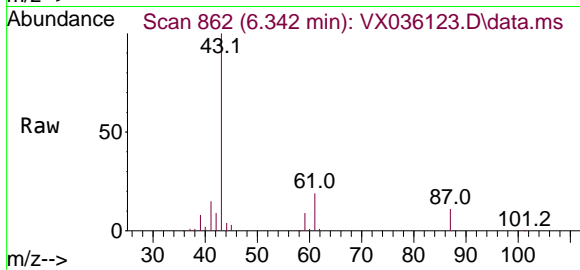




#43
 Isopropyl Acetate
 Concen: 29.983 ug/l
 RT: 6.342 min Scan# 80
 Delta R.T. 0.006 min
 Lab File: VX036123.D
 Acq: 12 Jun 2023 15:15

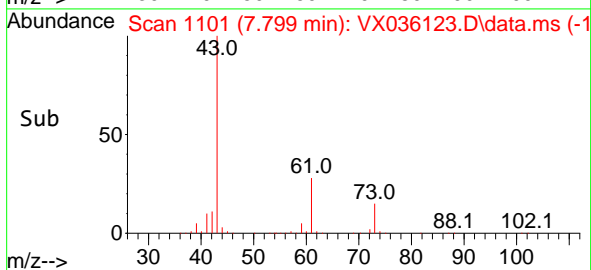
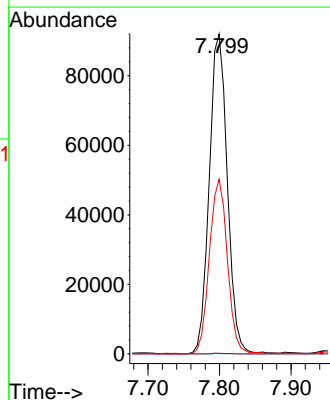
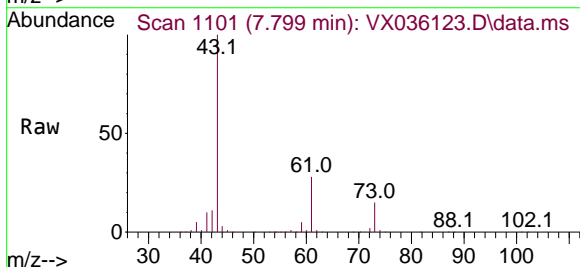
Instrument :
 MSVOA_X
 ClientSampleId :
 PB153331ZHE#03

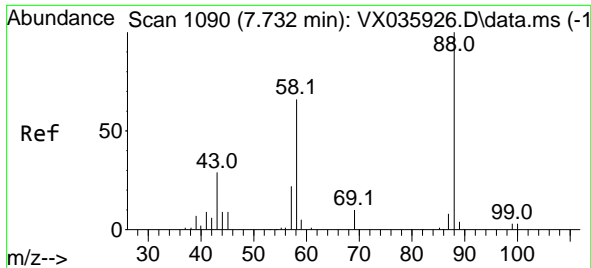
Tgt Ion: 43 Resp: 179007
 Ion Ratio Lower Upper
 43 100
 61 18.4 15.0 22.4
 87 12.0 9.9 14.9



#48
 Methyl methacrylate
 Concen: 55.023 ug/l
 RT: 7.799 min Scan# 1101
 Delta R.T. 0.110 min
 Lab File: VX036123.D
 Acq: 12 Jun 2023 15:15

Tgt Ion: 41 Resp: 161100
 Ion Ratio Lower Upper
 41 100
 69 0.2 59.0 88.6#
 39 54.6 48.4 72.6

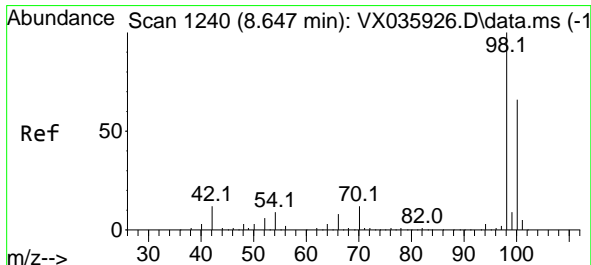
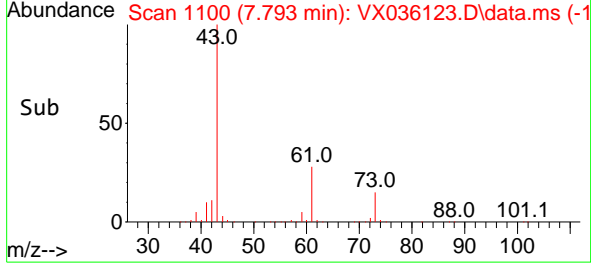
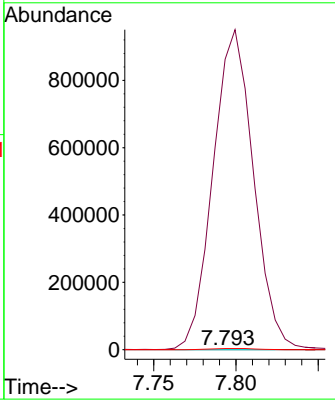
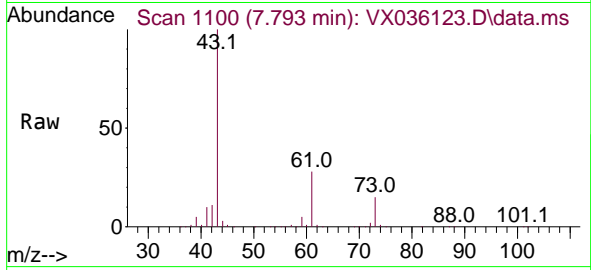




#49
 1,4-Dioxane
 Concen: 4.548 ug/l
 RT: 7.793 min Scan# 1100
 Delta R.T. 0.079 min
 Lab File: VX036123.D
 Acq: 12 Jun 2023 15:15

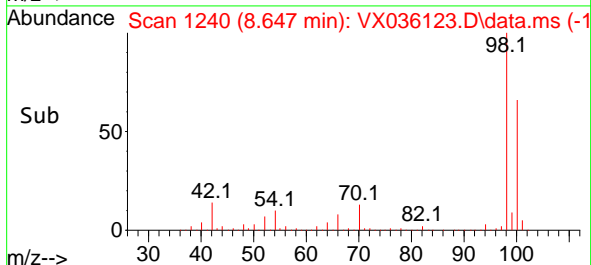
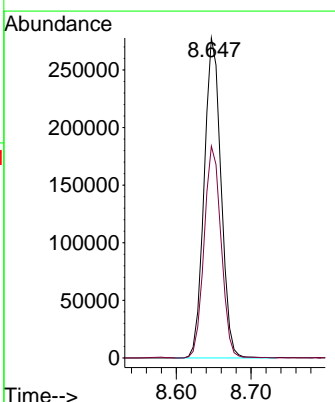
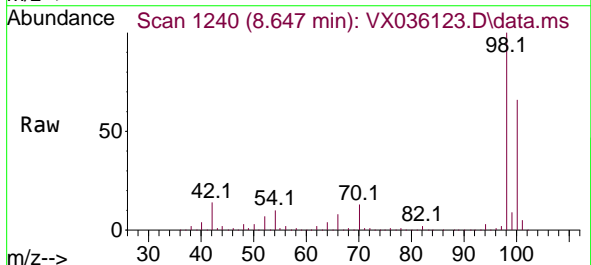
Instrument : MSVOA_X
 ClientSampleId : PB153331ZHE#03

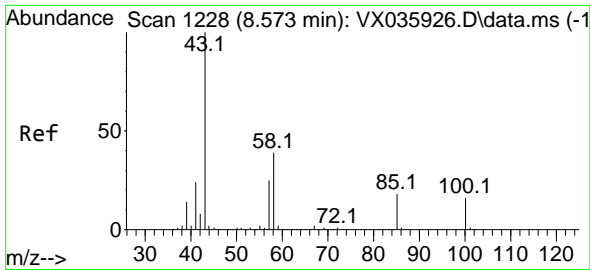
Tgt Ion: 88 Resp: 305
 Ion Ratio Lower Upper
 88 100
 43 537327.5 27.4 41.0#
 58 2217.4 58.9 88.3#



#50
 Toluene-d8
 Concen: 49.597 ug/l
 RT: 8.647 min Scan# 1240
 Delta R.T. 0.001 min
 Lab File: VX036123.D
 Acq: 12 Jun 2023 15:15

Tgt Ion: 98 Resp: 435252
 Ion Ratio Lower Upper
 98 100
 100 66.5 53.4 80.0

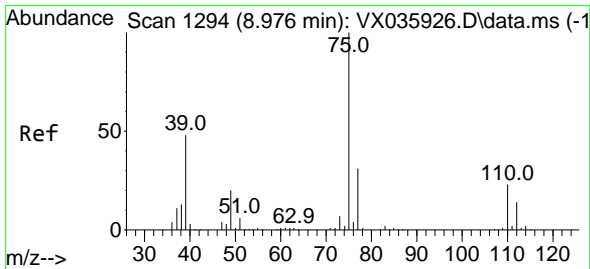
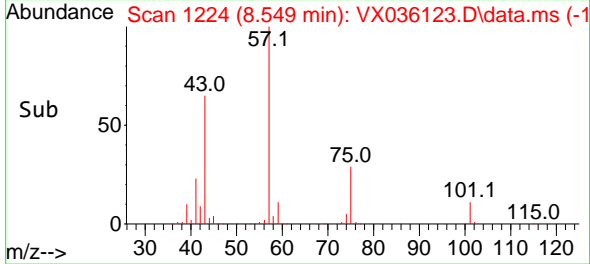
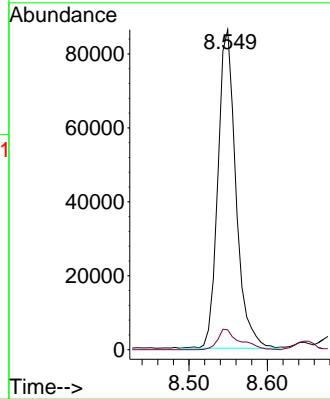
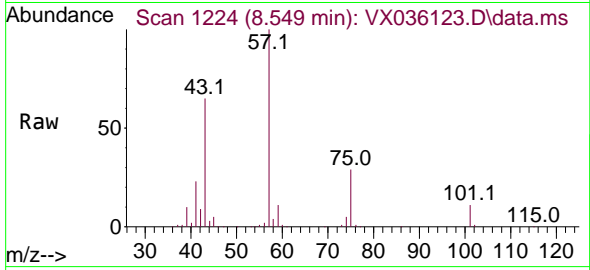




#51
 4-Methyl-2-Pentanone
 Concen: 37.810 ug/l
 RT: 8.549 min Scan# 11
 Delta R.T. -0.024 min
 Lab File: VX036123.D
 Acq: 12 Jun 2023 15:15

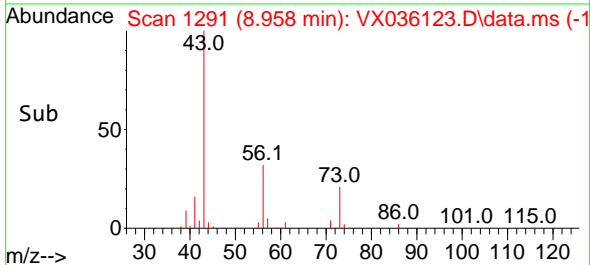
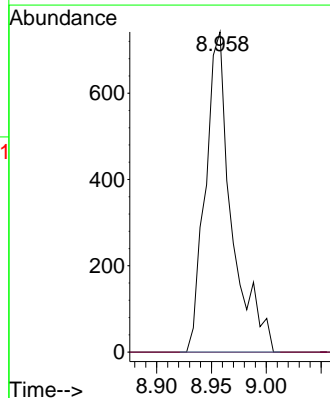
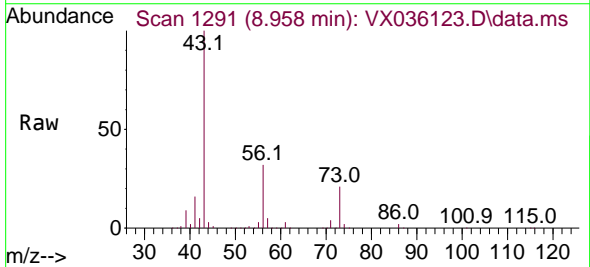
Instrument : MSVOA_X
 ClientSampleId : PB153331ZHE#03

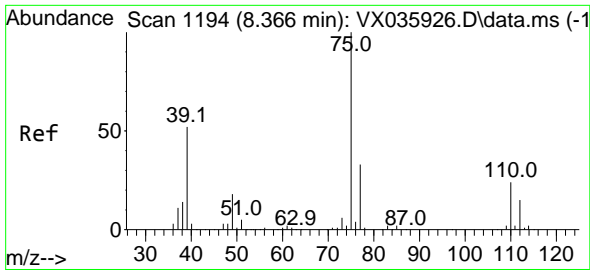
Tgt Ion: 43 Resp: 137791
 Ion Ratio Lower Upper
 43 100
 58 7.7 30.1 45.1#



#53
 t-1,3-Dichloropropene
 Concen: 0.346 ug/l
 RT: 8.958 min Scan# 1291
 Delta R.T. -0.018 min
 Lab File: VX036123.D
 Acq: 12 Jun 2023 15:15

Tgt Ion: 75 Resp: 1231
 Ion Ratio Lower Upper
 75 100
 77 0.0 25.0 37.6#

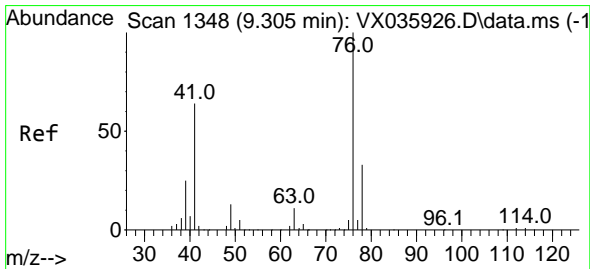
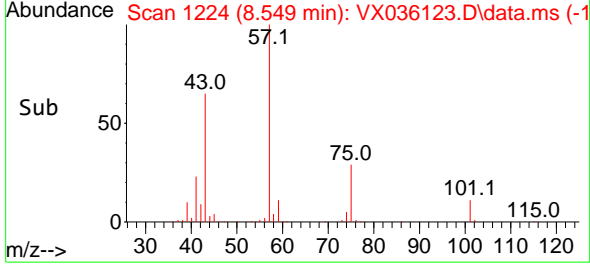
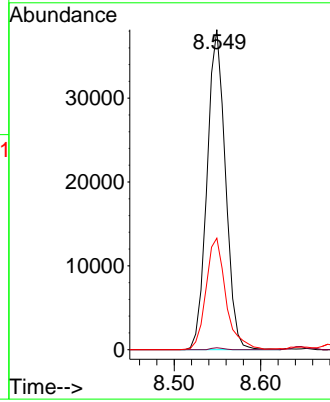
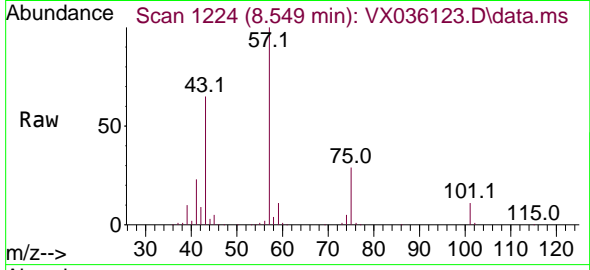




#54
 cis-1,3-Dichloropropene
 Concen: 14.324 ug/l
 RT: 8.549 min Scan# 1194
 Delta R.T. 0.183 min
 Lab File: VX036123.D
 Acq: 12 Jun 2023 15:15

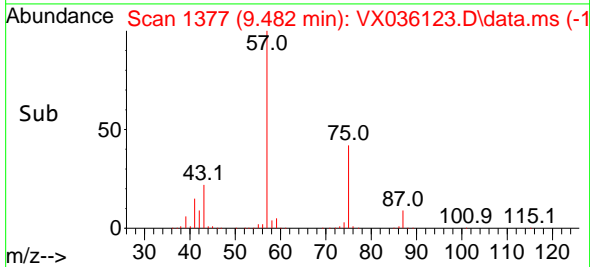
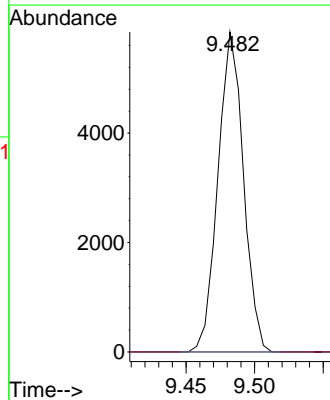
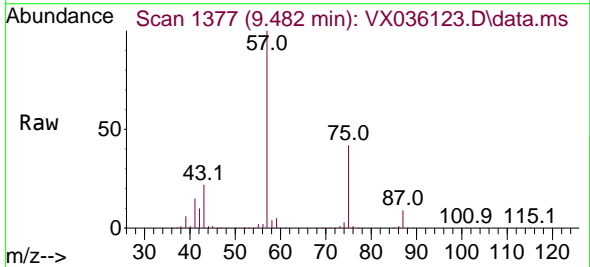
Instrument : MSVOA_X
 ClientSampleId : PB153331ZHE#03

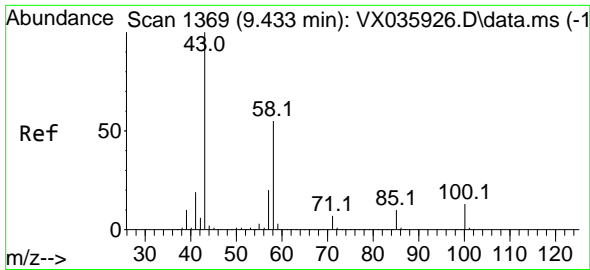
Tgt Ion: 75 Resp: 56271
 Ion Ratio Lower Upper
 75 100
 77 0.6 24.7 37.1#
 39 34.9 47.0 70.6#



#57
 1,3-Dichloropropane
 Concen: 1.712 ug/l
 RT: 9.482 min Scan# 1377
 Delta R.T. 0.171 min
 Lab File: VX036123.D
 Acq: 12 Jun 2023 15:15

Tgt Ion: 76 Resp: 7553
 Ion Ratio Lower Upper
 76 100
 78 0.0 26.0 39.0#

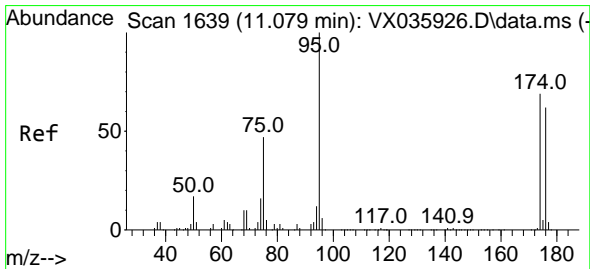
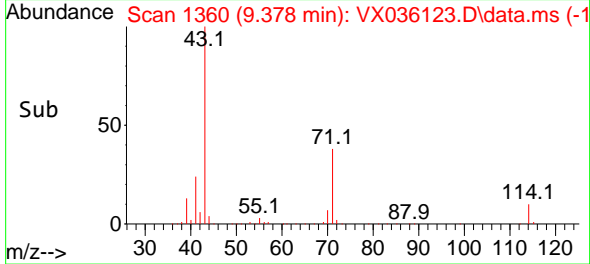
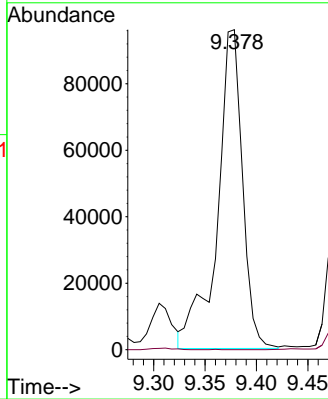
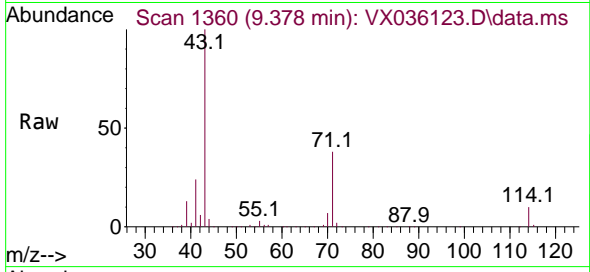




#59
 2-Hexanone
 Concen: 60.546 ug/l
 RT: 9.378 min Scan# 11
 Delta R.T. -0.055 min
 Lab File: VX036123.D
 Acq: 12 Jun 2023 15:15

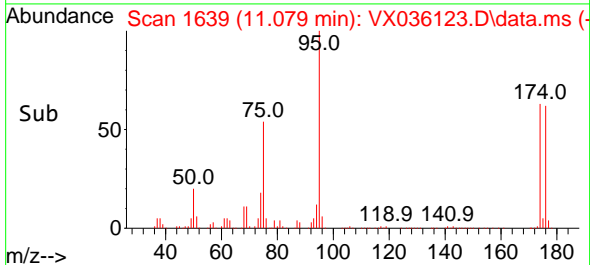
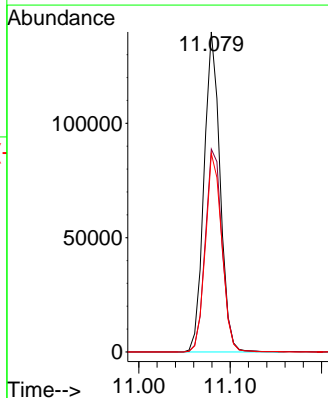
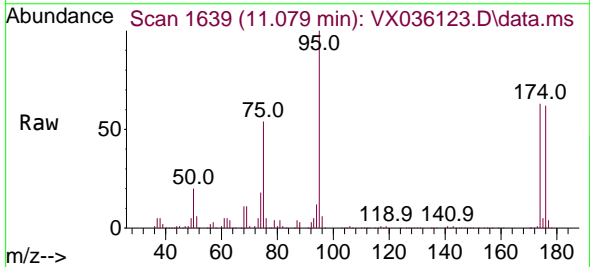
Instrument : MSVOA_X
 ClientSampleId : PB153331ZHE#03

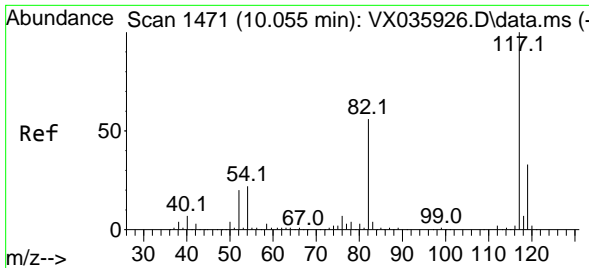
Tgt Ion: 43 Resp: 163129
 Ion Ratio Lower Upper
 43 100
 58 0.0 26.3 78.8#



#62
 4-Bromofluorobenzene
 Concen: 49.062 ug/l
 RT: 11.079 min Scan# 1639
 Delta R.T. 0.000 min
 Lab File: VX036123.D
 Acq: 12 Jun 2023 15:15

Tgt Ion: 95 Resp: 169968
 Ion Ratio Lower Upper
 95 100
 174 66.2 0.0 132.6
 176 63.6 0.0 128.0



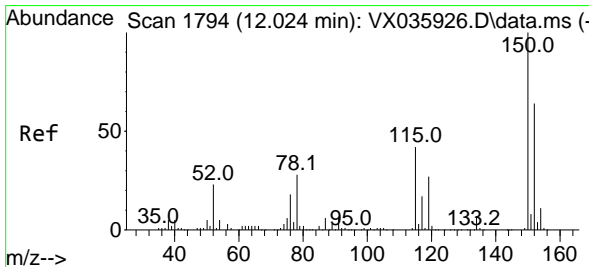
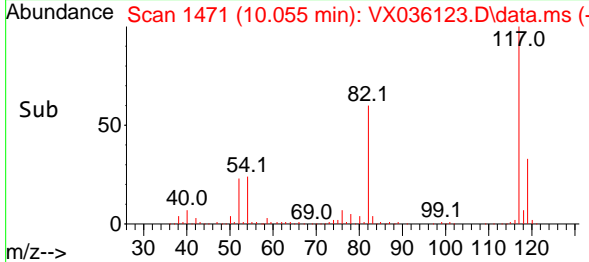
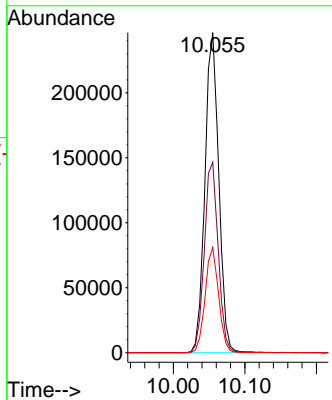
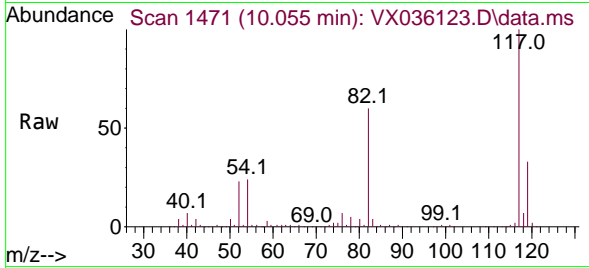


#63
 Chlorobenzene-d5
 Concen: 50.000 ug/l
 RT: 10.055 min Scan# 1471
 Delta R.T. 0.000 min
 Lab File: VX036123.D
 Acq: 12 Jun 2023 15:15

Instrument : MSVOA_X
 ClientSampleId : PB153331ZHE#03

Tgt Ion:117 Resp: 331550

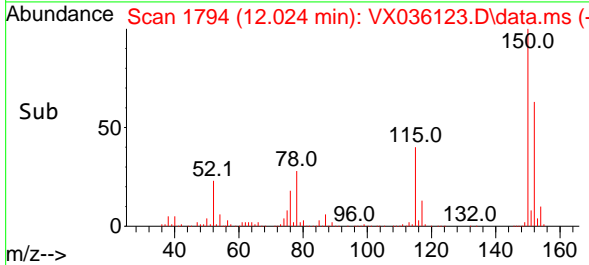
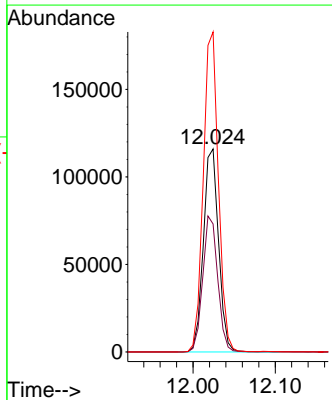
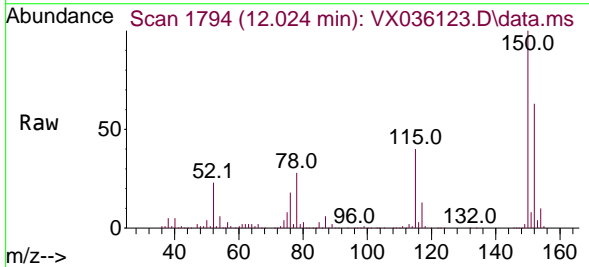
Ion	Ratio	Lower	Upper
117	100		
82	59.5	46.6	69.8
119	32.8	25.4	38.2

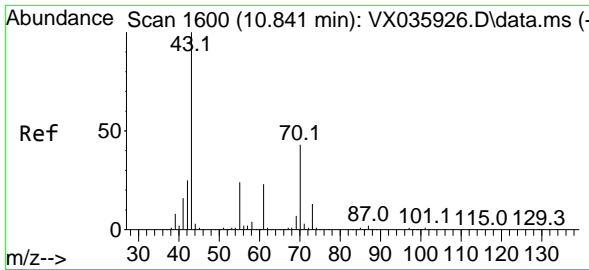


#72
 1,4-Dichlorobenzene-d4
 Concen: 50.000 ug/l
 RT: 12.024 min Scan# 1794
 Delta R.T. 0.000 min
 Lab File: VX036123.D
 Acq: 12 Jun 2023 15:15

Tgt Ion:152 Resp: 148788

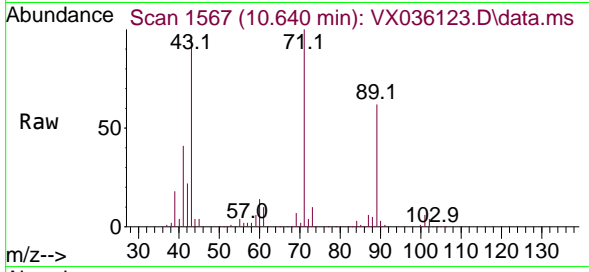
Ion	Ratio	Lower	Upper
152	100		
115	66.0	45.5	136.5
150	156.7	0.0	345.2





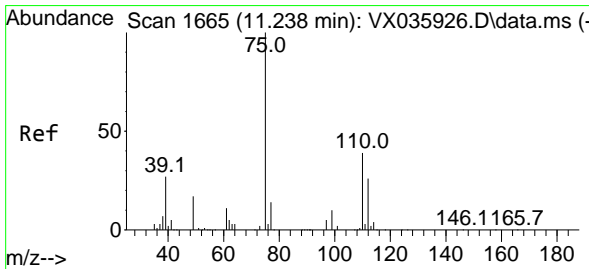
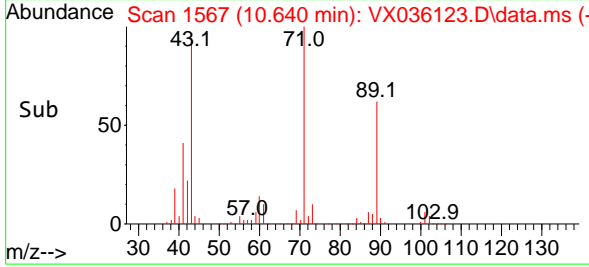
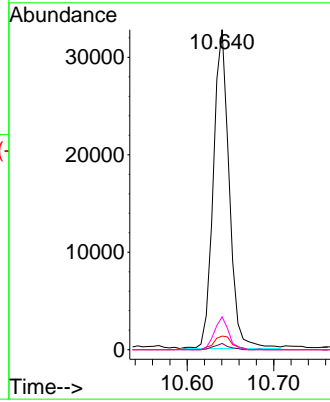
#74
 N-amy1 acetate
 Concen: 8.844 ug/l
 RT: 10.640 min Scan# 1600
 Delta R.T. -0.201 min
 Lab File: VX036123.D
 Acq: 12 Jun 2023 15:15

Instrument : MSVOA_X
 ClientSampleId : PB153331ZHE#03



Tgt Ion: 43 Resp: 41679

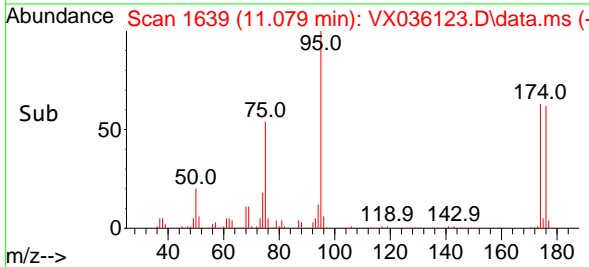
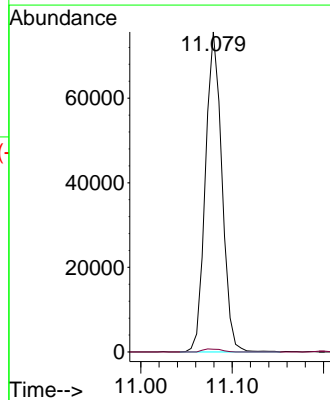
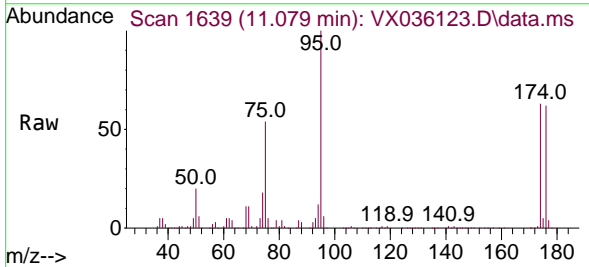
Ion	Ratio	Lower	Upper
43	100		
70	1.8	32.6	48.8#
55	4.9	19.0	28.4#
61	9.2	18.7	28.1#

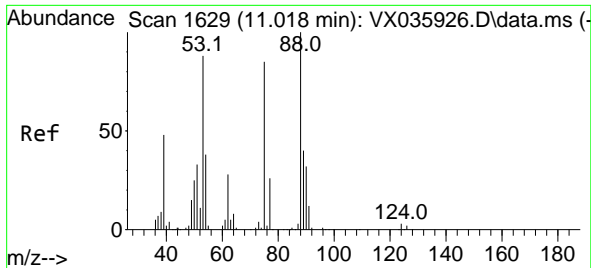


#76
 1,2,3-Trichloropropane
 Concen: 28.181 ug/l
 RT: 11.079 min Scan# 1639
 Delta R.T. -0.158 min
 Lab File: VX036123.D
 Acq: 12 Jun 2023 15:15

Tgt Ion: 75 Resp: 94570

Ion	Ratio	Lower	Upper
75	100		
77	1.0	21.4	64.2#





#81
 trans-1,4-Dichloro-2-butene
 Concen: 94.922 ug/l
 RT: 11.079 min Scan# 10
 Delta R.T. 0.061 min
 Lab File: VX036123.D
 Acq: 12 Jun 2023 15:15

Instrument : MSVOA_X
 ClientSampleId : PB153331ZHE#03

Tgt Ion: 75 Resp: 94570

Ion	Ratio	Lower	Upper
75	100		
53	0.1	95.2	142.8#
89	0.0	38.0	57.0#

