

Data Path : Z:\voasrv\HPCHEM1\MSVOA_X\Data\VX061225\
 Data File : VX046668.D
 Acq On : 12 Jun 2025 16:55
 Operator : JC/MD
 Sample : Q2275-05
 Misc : 5.0mL/MSVOA_X/WATER
 ALS Vial : 13 Sample Multiplier: 1

Instrument :
 MSVOA_X
 ClientSampleId :
 TB01-060925

Integration Parameters: RTEINT.P

Integrator: RTE
 Smoothing : ON Filtering: 5
 Sampling : 1 Min Area: 3 % of largest Peak
 Start Thrs: 0.2 Max Peaks: 100
 Stop Thrs : 0 Peak Location: TOP

If leading or trailing edge < 100 prefer < Baseline drop else tangent >
 Peak separation: 5

Method : Z:\voasrv\HPCHEM1\MSVOA_X\Method\82X060625W.M
 Title : SW846 8260

Signal : TIC: VX046668.D\data.ms

peak #	R.T. min	first scan	max scan	last scan	PK TY	peak height	corr. area	corr. % max.	% of total
1	5.403	697	708	725	rBV	53374	169776	38.26%	6.378%
2	5.568	725	735	763	rVB2	86810	271878	61.27%	10.213%
3	5.970	790	801	823	rBV	60619	174520	39.33%	6.556%
4	6.775	922	933	949	rBV	140581	358697	80.84%	13.475%
5	8.653	1235	1241	1253	rBV	279330	443736	100.00%	16.669%
6	9.275	1338	1343	1349	rBV2	8687	14023	3.16%	0.527%
7	10.055	1465	1471	1483	rBV	316892	430573	97.03%	16.175%
8	11.079	1634	1639	1650	rBV	240545	319988	72.11%	12.021%
9	11.311	1672	1677	1682	rVB	19024	26405	5.95%	0.992%
10	12.024	1788	1794	1807	rBV	327561	432397	97.44%	16.243%
11	12.762	1909	1915	1921	rBV2	10903	14576	3.28%	0.548%
12	14.128	2132	2139	2145	rBV	4014	5414	1.22%	0.203%

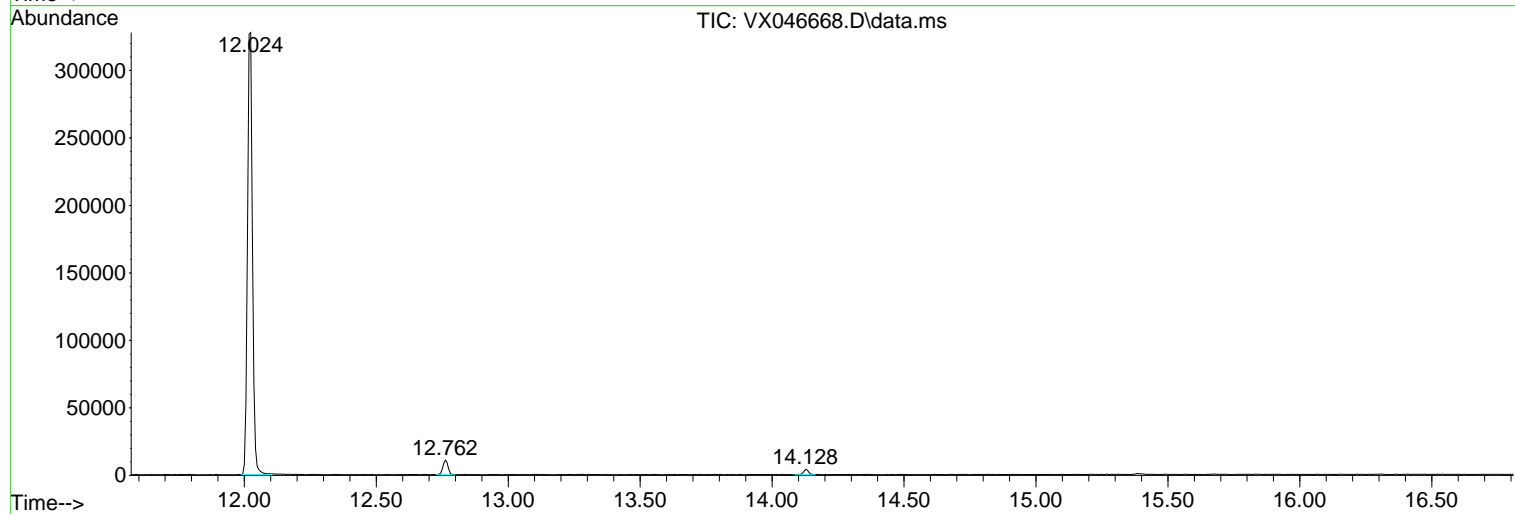
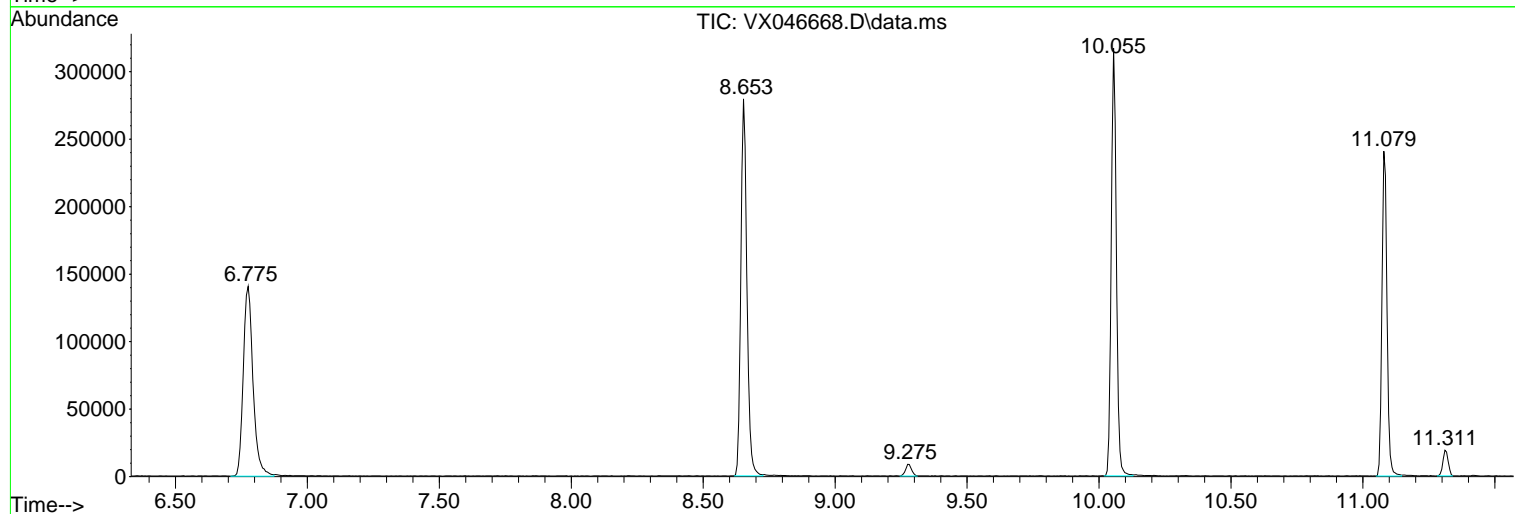
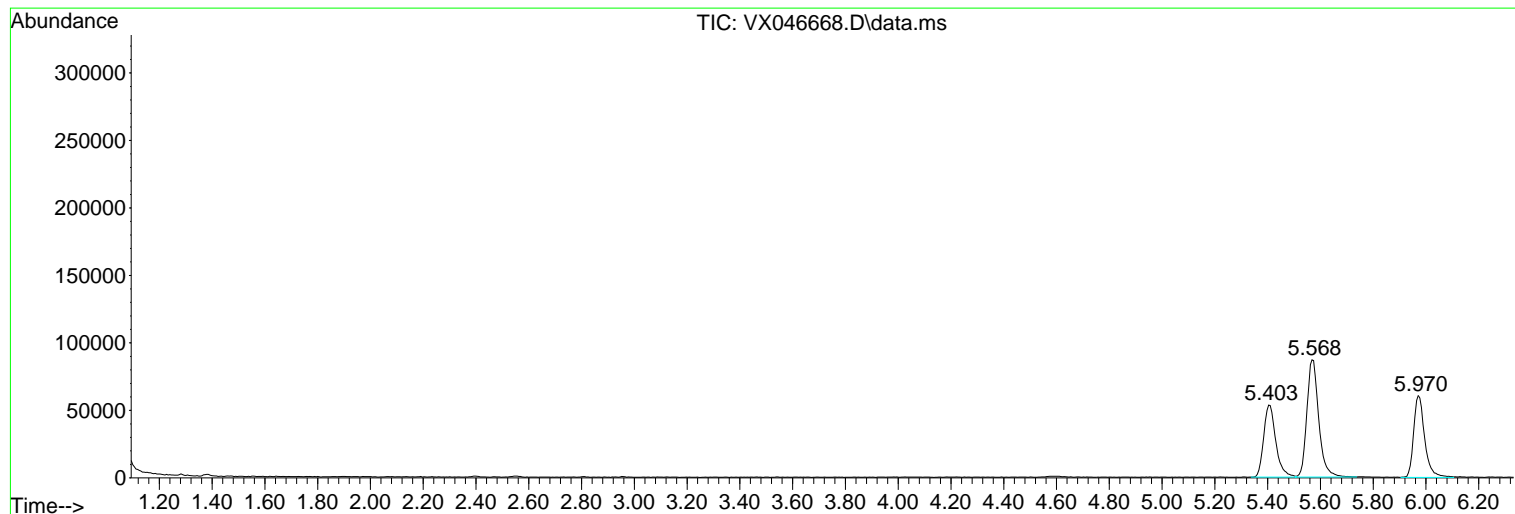
Sum of corrected areas: 2661983

Data Path : Z:\voasrv\HPCHEM1\MSVOA_X\Data\VX061225\
 Data File : VX046668.D
 Acq On : 12 Jun 2025 16:55
 Operator : JC/MD
 Sample : Q2275-05
 Misc : 5.0mL/MSVOA_X/WATER
 ALS Vial : 13 Sample Multiplier: 1

Instrument :
 MSVOA_X
 ClientSampleId :
 TB01-060925

Quant Method : Z:\voasrv\HPCHEM1\MSVOA_X\Method\82X060625W.M
 Quant Title : SW846 8260

TIC Library : C:\Database\NIST20.L
 TIC Integration Parameters: LSCINT.P



Library Search Compound Report

Data Path : Z:\voasrv\HPCHEM1\MSVOA_X\Data\VX061225\
Data File : VX046668.D
Acq On : 12 Jun 2025 16:55
Operator : JC/MD
Sample : Q2275-05
Misc : 5.0mL/MSVOA_X/WATER
ALS Vial : 13 Sample Multiplier: 1

Instrument :
MSVOA_X
ClientSampleId :
TB01-060925

Quant Method : Z:\voasrv\HPCHEM1\MSVOA_X\Method\82X060625W.M
Quant Title : SW846 8260

TIC Library : C:\Database\NIST20.L
TIC Integration Parameters: LSCINT.P

No Library Search Compounds Detected

Data Path : Z:\voasrv\HPCHEM1\MSVOA_X\Data\VX061225\
Data File : VX046668.D
Acq On : 12 Jun 2025 16:55
Operator : JC/MD
Sample : Q2275-05
Misc : 5.0mL/MSVOA_X/WATER
ALS Vial : 13 Sample Multiplier: 1

Instrument :
MSVOA_X
ClientSampleId :
TB01-060925

Quant Method : Z:\voasrv\HPCHEM1\MSVOA_X\Method\82X060625W.M
Quant Title : SW846 8260

TIC Library : C:\Database\NIST20.L
TIC Integration Parameters: LSCINT.P

TIC Top Hit name	RT	EstConc	Units	Response	--Internal Standard--			
					#	RT	Resp	Conc
