

Data Path : Z:\VOASRV\HPCHEM1\MSVOA X\DATA\VX061319\  
 Data File : VX010274.D  
 Acq On : 13 Jun 2019 15:49  
 Operator : JC/SP  
 Sample : K3283-01  
 Misc : 5.81µ/5mL/100uL/5.00mL/MSVOA\_X/MEOH  
 ALS Vial : 9 Sample Multiplier: 1

Instrument :  
 MSVOA\_X  
 ClientSampleId :

Quant Time: Jun 14 03:34:16 2019  
 Quant Method : Z:\VOASRV\HPCHEM1\MSVOA\_X\METHOD\82X060719W.M  
 Quant Title : SW846 8260  
 QLast Update : Sat Jun 08 02:12:13 2019  
 Response via : Initial Calibration

Internal Standards	R.T.	QIon	Response	Conc	Units	Dev(Min)
1) Pentafluorobenzene	5.66	168	279319	50.00	µg/l	0.00
34) 1,4-Difluorobenzene	6.85	114	421957	50.00	µg/l	0.00
63) Chlorobenzene-d5	10.11	117	373935	50.00	µg/l	0.00
72) 1,4-Dichlorobenzene-d4	12.08	152	189430	50.00	µg/l	0.00

## System Monitoring Compounds

33) 1,2-Dichloroethane-d4	6.06	65	124865	45.80	µg/l	0.00
Spiked Amount				50.000		
			Recovery	=	91.60%	
35) Dibromofluoromethane	5.50	113	126409	48.57	µg/l	0.00
Spiked Amount				50.000		
			Recovery	=	97.14%	
50) Toluene-d8	8.71	98	487753	50.00	µg/l	0.00
Spiked Amount				50.000		
			Recovery	=	100.00%	
62) 4-Bromofluorobenzene	11.14	95	169124	46.42	µg/l	0.00
Spiked Amount				50.000		
			Recovery	=	92.84%	

## Target Compounds

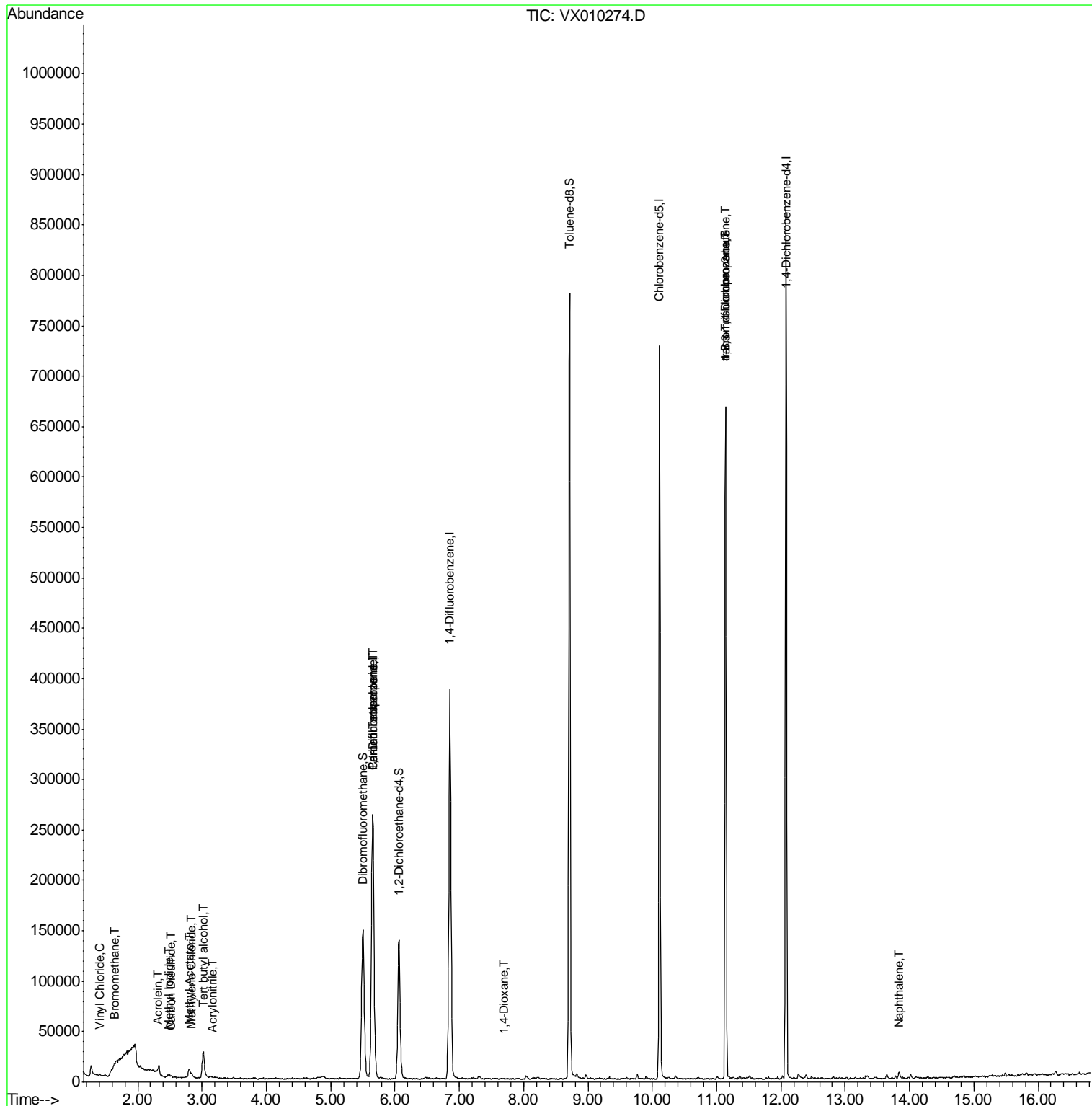
						Qvalue
4) Vinyl Chloride	1.41	62	1079	0.450	µg/l #	76
5) Bromomethane	1.63	94	525	0.580	µg/l	88
10) Methyl Iodide	2.48	142	1369	0.360	µg/l #	93
11) Tert butyl alcohol	3.02	59	15909	23.819	µg/l #	79
13) Acrolein	2.31	56	78	0.640	µg/l #	1
15) Acrylonitrile	3.16	53	349	0.256	µg/l #	32
17) Carbon Disulfide	2.53	76	1582	0.218	µg/l #	77
18) Methyl Acetate	2.80	43	3486	1.236	µg/l #	83
20) Methylene Chloride	2.84	84	2134	0.758	µg/l #	84
36) 1,1-Dichloropropene	5.65	75	16737	4.862	µg/l #	53
38) Carbon Tetrachloride	5.65	117	24654	6.327	µg/l #	15
49) 1,4-Dioxane	7.70	88	50	0.626	µg/l #	1
76) 1,2,3-Trichloropropane	11.14	75	77626	20.487	µg/l #	34
81) trans-1,4-Dichloro-2-buten	11.14	75	77626	45.265	µg/l #	10
95) Naphthalene	13.83	128	4025	0.281	µg/l	98

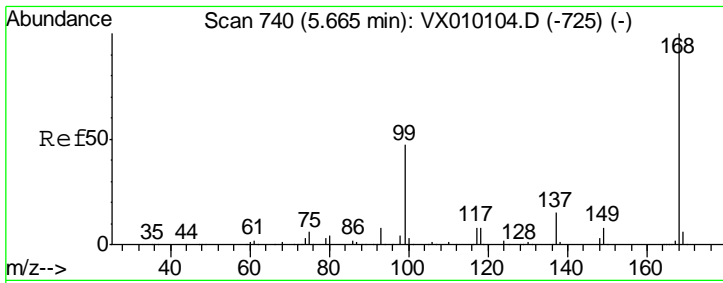
(#) = qualifier out of range (m) = manual integration (+) = signals summed

Data Path : Z:\VOASRV\HPCHEM1\MSVOA X\DATA\VX061319\  
 Data File : VX010274.D  
 Acq On : 13 Jun 2019 15:49  
 Operator : JC/SP  
 Sample : K3283-01  
 Misc : 5.81µ/5mL/100uL/5.00mL/MSVOA\_X/MEOH  
 ALS Vial : 9 Sample Multiplier: 1

Instrument :  
 MSVOA\_X  
 ClientSampled :

Quant Time: Jun 14 03:34:16 2019  
 Quant Method : Z:\VOASRV\HPCHEM1\MSVOA\_X\METHOD\82X060719W.M  
 Quant Title : SW846 8260  
 QLast Update : Sat Jun 08 02:12:13 2019  
 Response via : Initial Calibration

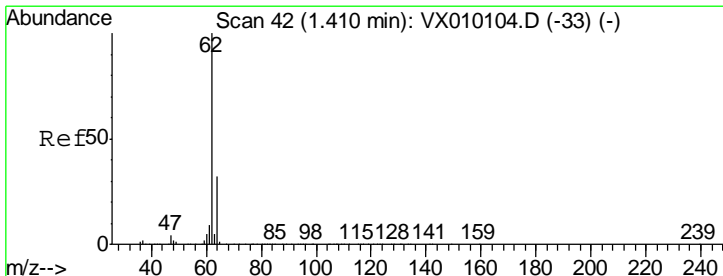
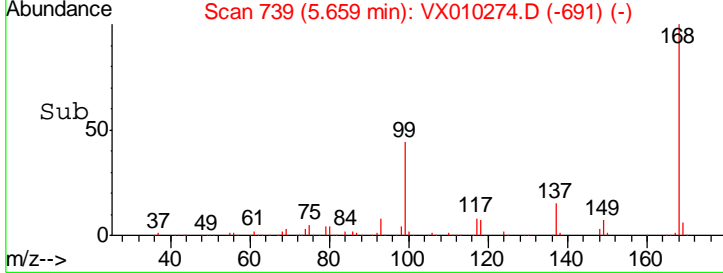
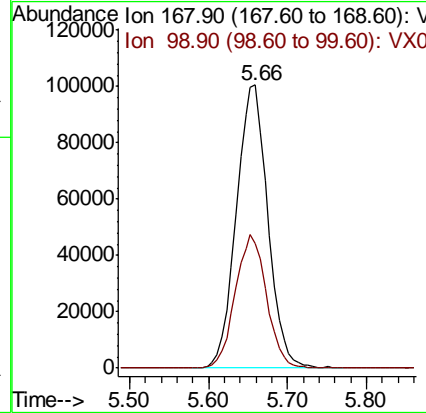
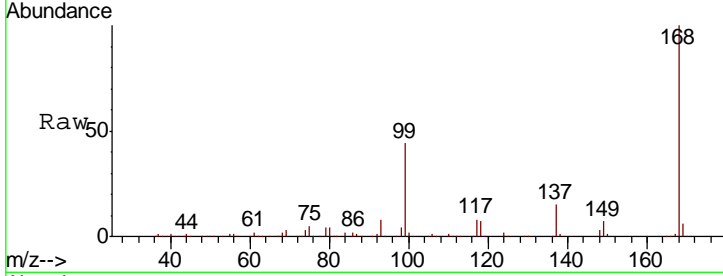




#1  
 Pentafluorobenzene  
 Concen: 50.000 ug/l  
 RT: 5.66 min Scan# 739  
 Delta R.T. -0.01 min  
 Lab File: VX010274.D  
 Acq: 13 Jun 2019 15:49

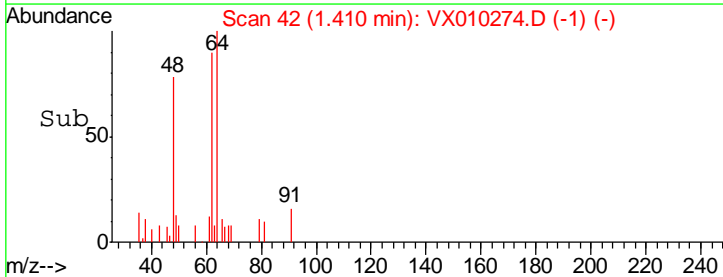
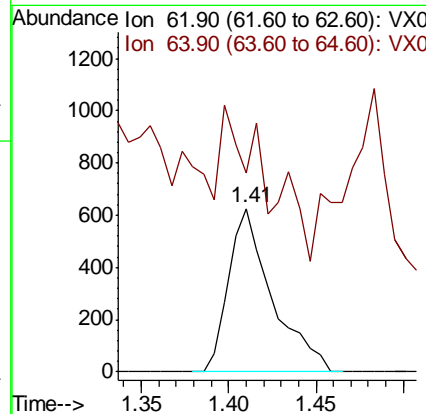
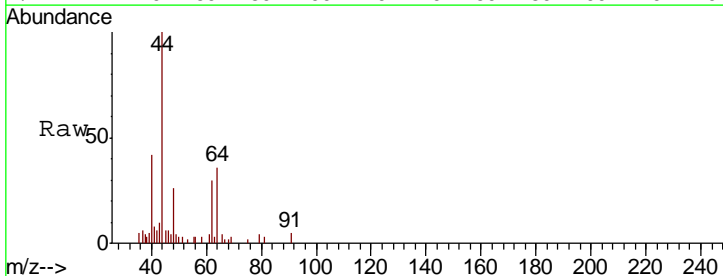
Instrument :  
 MSVOA\_X  
 ClientSampled :

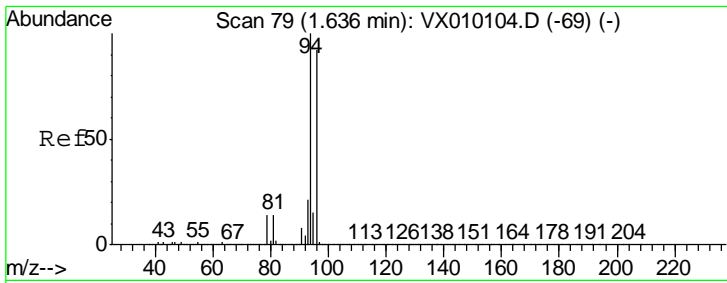
Tgt Ion	Resp	Lower	Upper
168	100		
99	43.9	43.0	64.6



#4  
 Vinyl Chloride  
 Concen: 0.450 ug/l  
 RT: 1.41 min Scan# 42  
 Delta R.T. -0.00 min  
 Lab File: VX010274.D  
 Acq: 13 Jun 2019 15:49

Tgt Ion	Resp	Lower	Upper
62	100		
64	18.6	25.7	38.5#

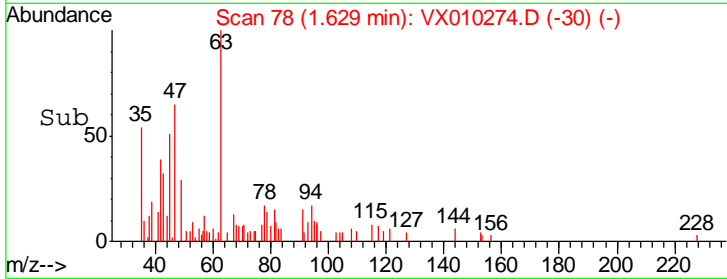
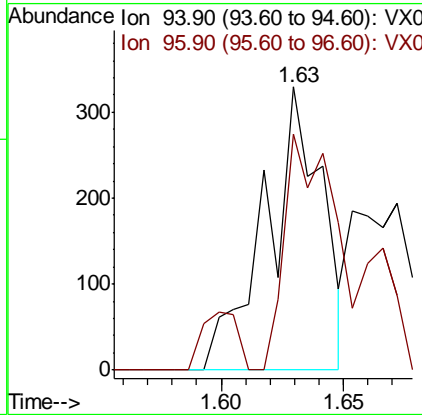
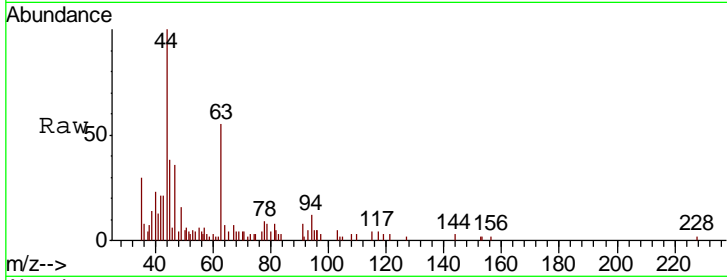




#5  
 Bromomethane  
 Concen: 0.580 ug/l  
 RT: 1.63 min Scan# 78  
 Delta R.T. -0.01 min  
 Lab File: VX010274.D  
 Acq: 13 Jun 2019 15:49

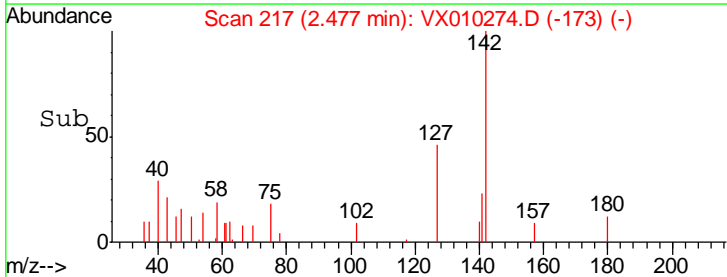
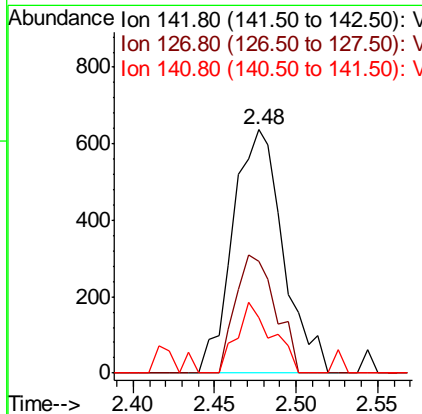
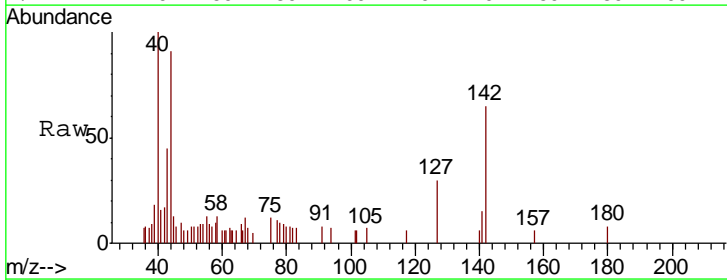
Instrument :  
 MSVOA\_X  
 ClientSampled :

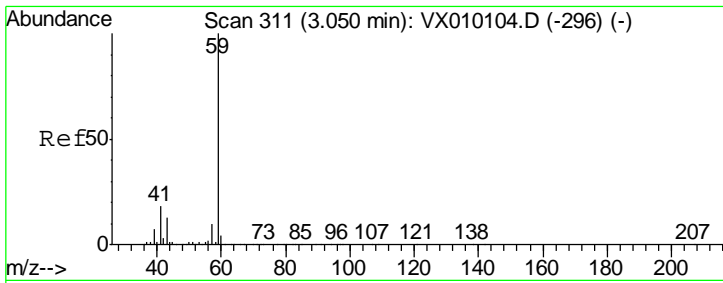
Tgt Ion	Resp	Lower	Upper
94	525		
96	83.3	76.2	114.4



#10  
 Methyl Iodide  
 Concen: 0.360 ug/l  
 RT: 2.48 min Scan# 217  
 Delta R.T. -0.03 min  
 Lab File: VX010274.D  
 Acq: 13 Jun 2019 15:49

Tgt Ion	Resp	Lower	Upper
142	1369		
127	38.6	33.0	49.4
141	20.4	11.4	17.0#

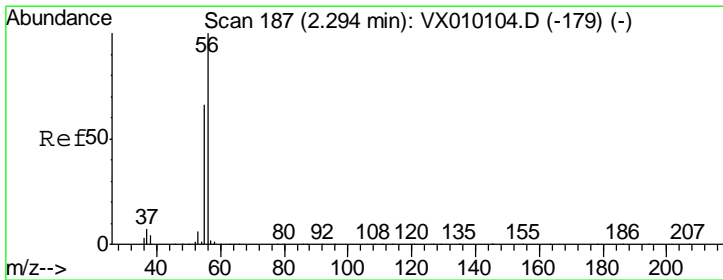
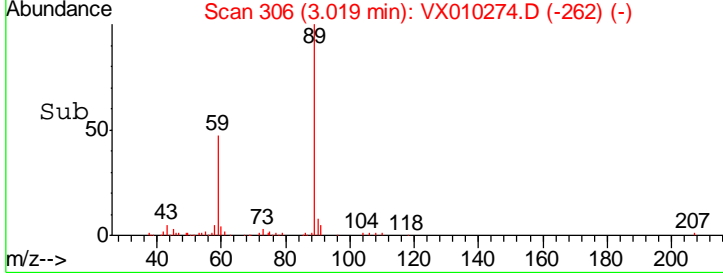
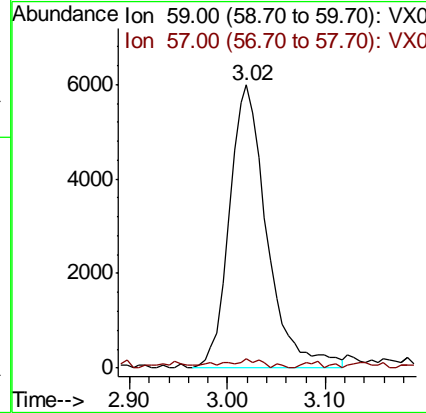
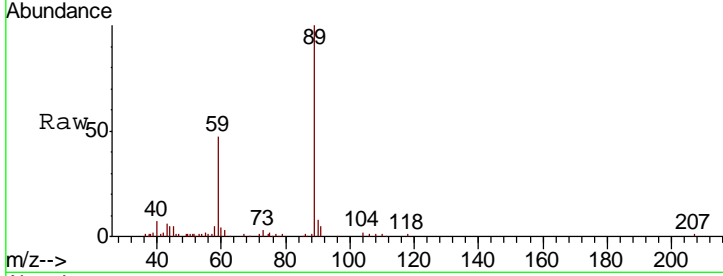




#11  
 Tert butyl alcohol  
 Concen: 23.819 ug/l  
 RT: 3.02 min Scan# 306  
 Delta R.T. -0.03 min  
 Lab File: VX010274.D  
 Acq: 13 Jun 2019 15:49

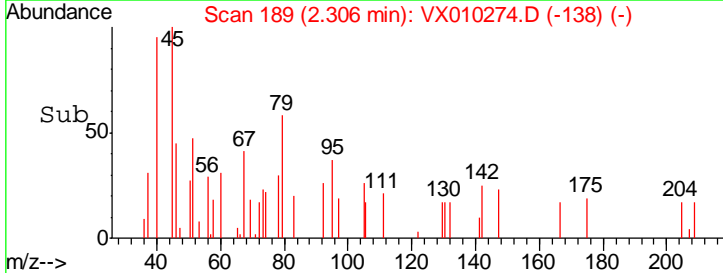
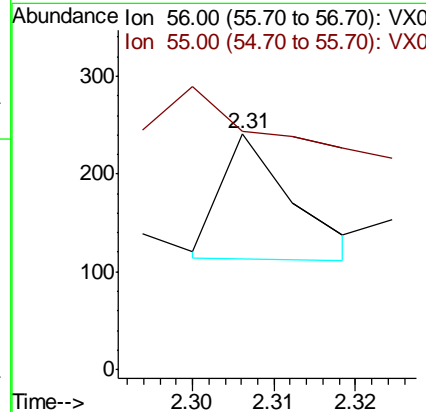
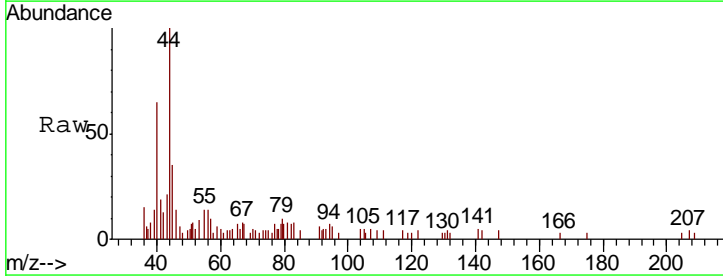
Instrument : MSVOA\_X  
 ClientSampled :

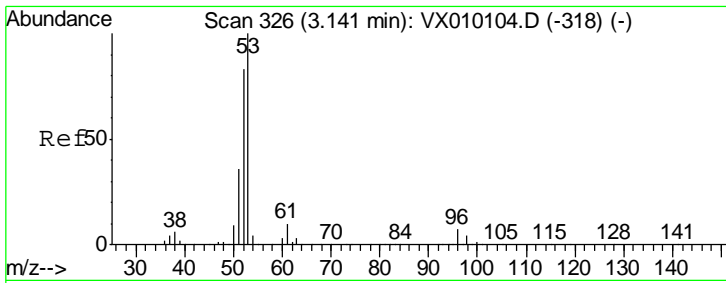
Tgt Ion: 59 Resp: 15909  
 Ion Ratio Lower Upper  
 59 100  
 57 2.4 8.2 12.2#



#13  
 Acrolein  
 Concen: 0.640 ug/l  
 RT: 2.31 min Scan# 189  
 Delta R.T. 0.01 min  
 Lab File: VX010274.D  
 Acq: 13 Jun 2019 15:49

Tgt Ion: 56 Resp: 78  
 Ion Ratio Lower Upper  
 56 100  
 55 206.4 57.0 85.4#

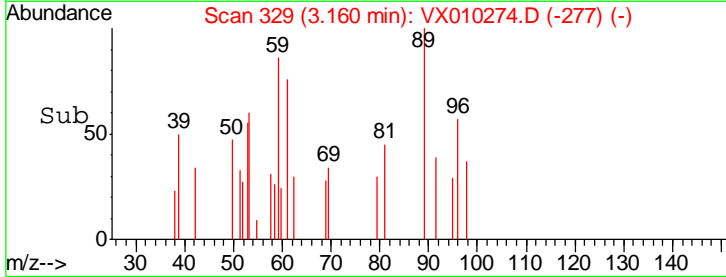
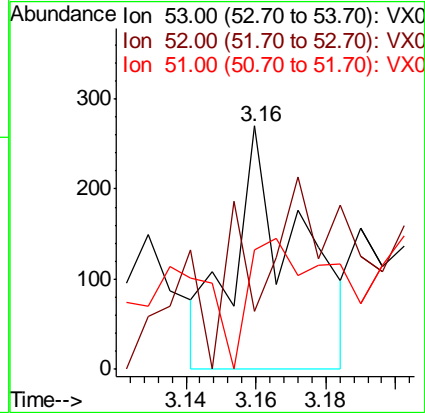
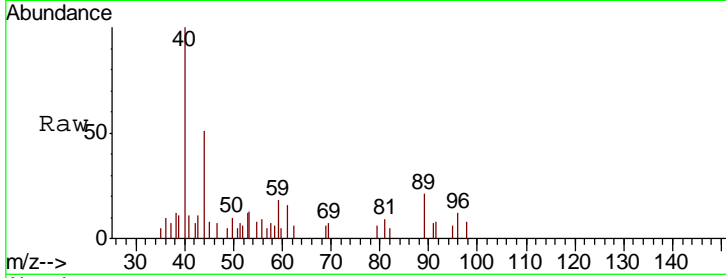




#15  
 Acrylonitrile  
 Concen: 0.256 ug/l  
 RT: 3.16 min Scan# 329  
 Delta R.T. 0.02 min  
 Lab File: VX010274.D  
 Acq: 13 Jun 2019 15:49

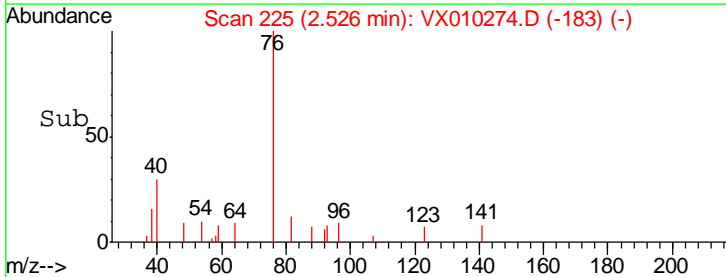
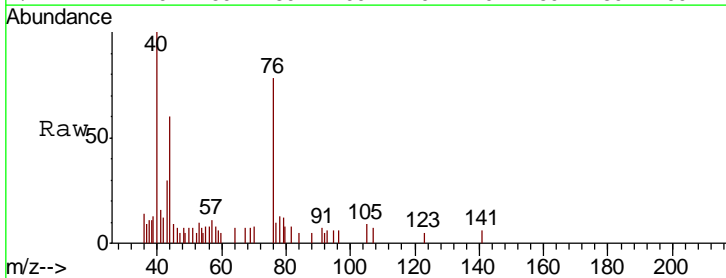
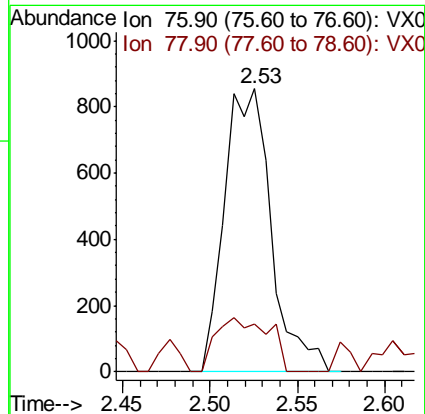
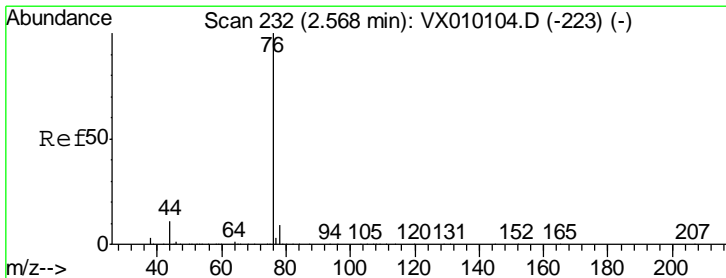
Instrument : MSVOA\_X  
 ClientSampled :

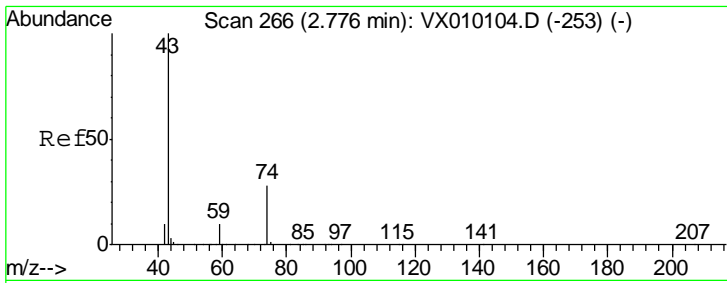
Tgt Ion	Resp	Lower	Upper
53	100		
52	147.6	66.7	100.1#
51	71.9	28.8	43.2#



#17  
 Carbon Disulfide  
 Concen: 0.218 ug/l  
 RT: 2.53 min Scan# 225  
 Delta R.T. -0.04 min  
 Lab File: VX010274.D  
 Acq: 13 Jun 2019 15:49

Tgt Ion	Resp	Lower	Upper
76	100		
78	17.0	7.0	10.6#

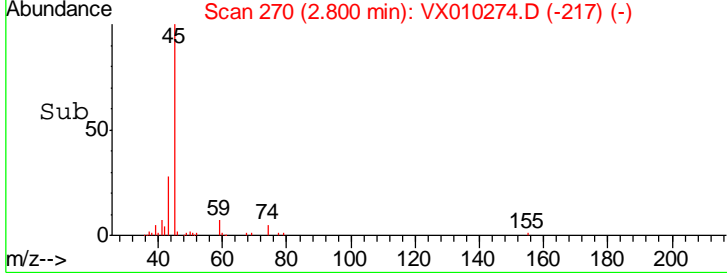
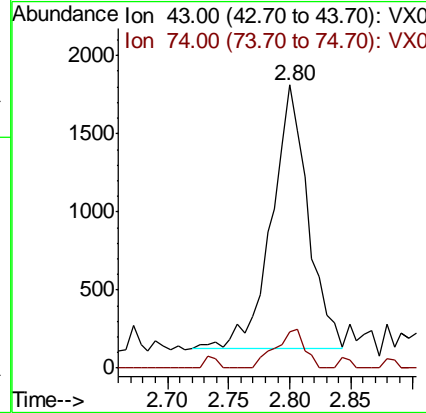
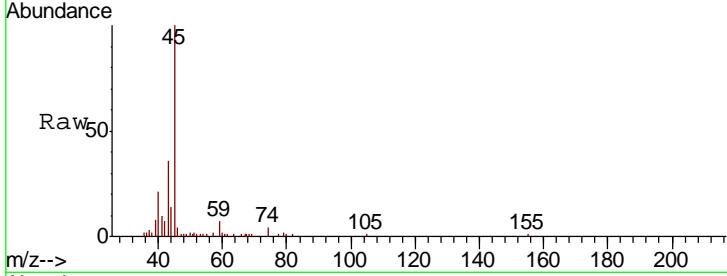




#18  
 Methyl Acetate  
 Concen: 1.236 ug/l  
 RT: 2.80 min Scan# 270  
 Delta R.T. 0.02 min  
 Lab File: VX010274.D  
 Acq: 13 Jun 2019 15:49

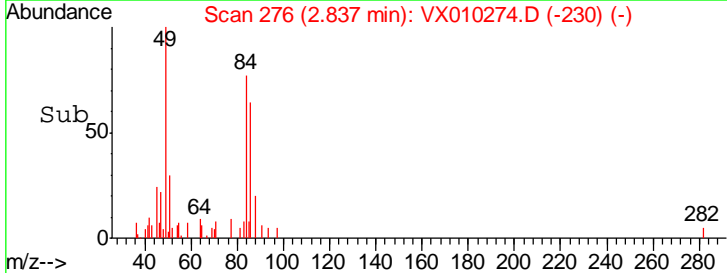
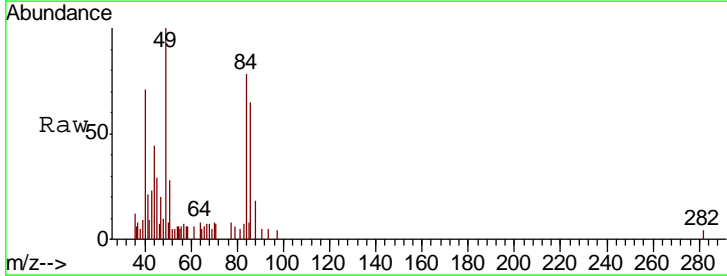
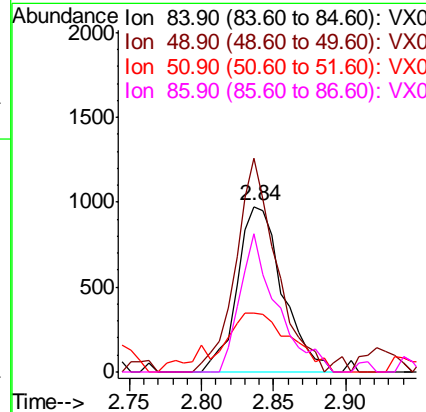
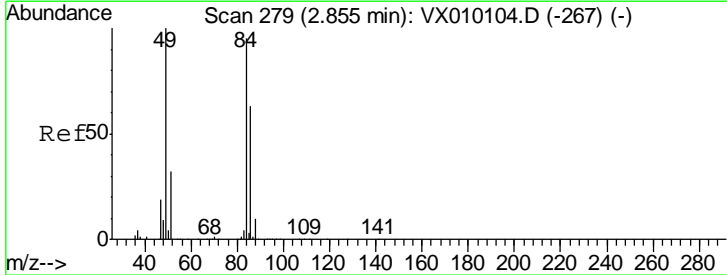
Instrument :  
 MSVOA\_X  
 ClientSampled :

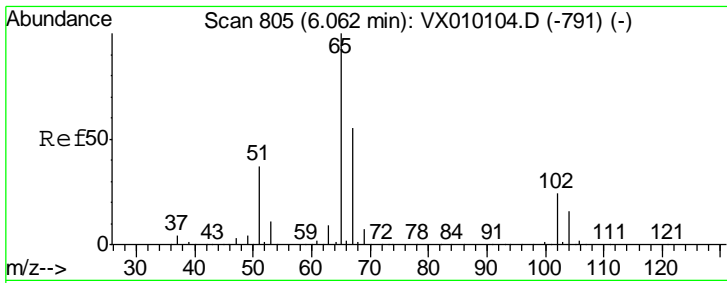
Tgt Ion	Resp	Lower	Upper
43	100		
74	11.9	15.8	23.6#



#20  
 Methylene Chloride  
 Concen: 0.758 ug/l  
 RT: 2.84 min Scan# 276  
 Delta R.T. -0.02 min  
 Lab File: VX010274.D  
 Acq: 13 Jun 2019 15:49

Tgt Ion	Resp	Lower	Upper
84	100		
49	128.9	115.8	173.6
51	35.7	34.4	51.6
86	83.8	49.7	74.5#

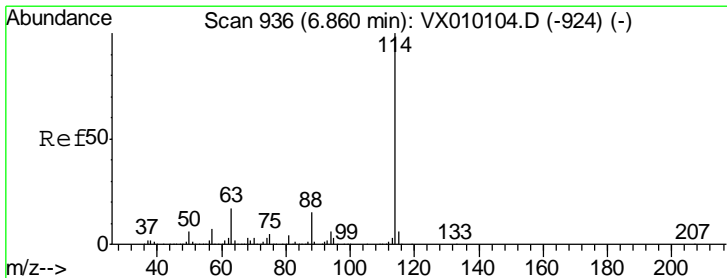
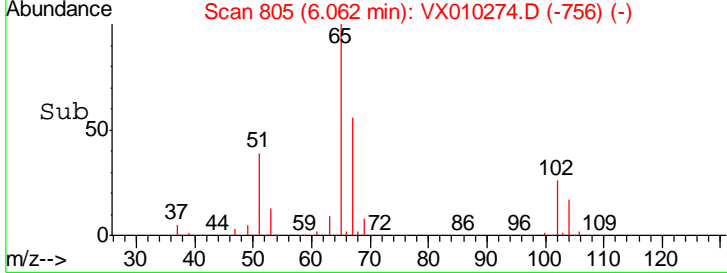
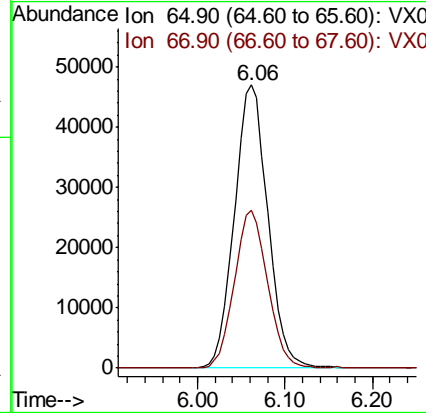
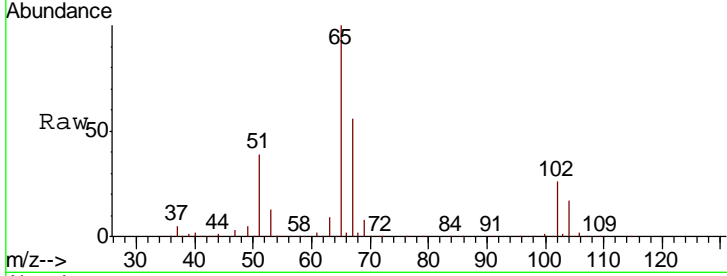




#33  
 1,2-Dichloroethane-d4  
 Concen: 45.797 ug/l  
 RT: 6.06 min Scan# 805  
 Delta R.T. 0.00 min  
 Lab File: VX010274.D  
 Acq: 13 Jun 2019 15:49

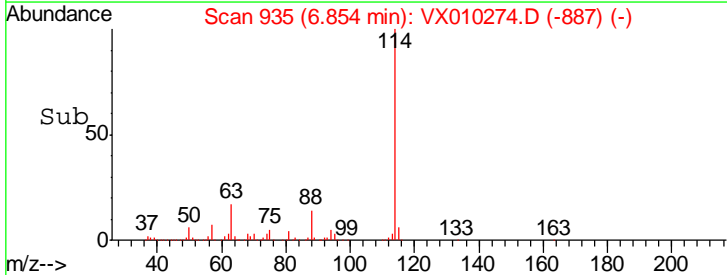
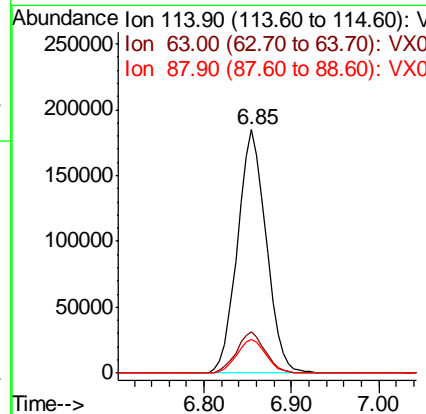
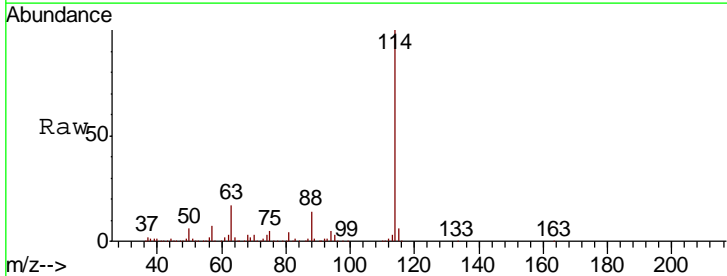
Instrument :  
 MSVOA\_X  
 ClientSampled :

Tgt Ion	Resp	Lower	Upper
65	124865		
67	55.4	0.0	108.4

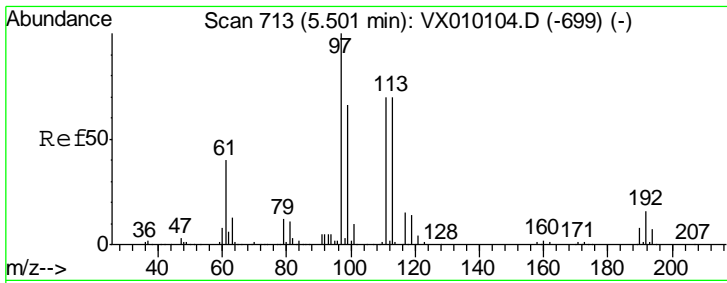


#34  
 1,4-Difluorobenzene  
 Concen: 50.000 ug/l  
 RT: 6.85 min Scan# 935  
 Delta R.T. -0.01 min  
 Lab File: VX010274.D  
 Acq: 13 Jun 2019 15:49

Tgt Ion	Resp	Lower	Upper
114	421957		
63	17.0	0.0	47.4
88	13.9	0.0	33.0



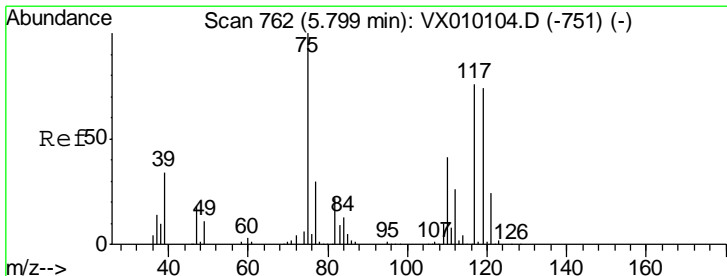
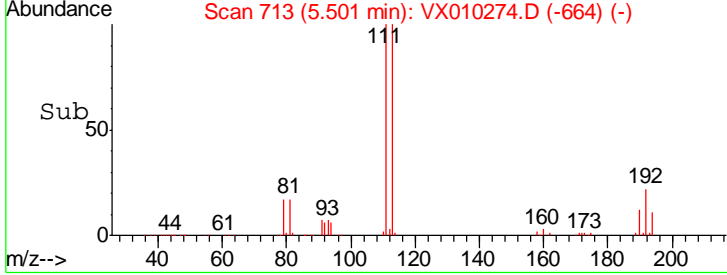
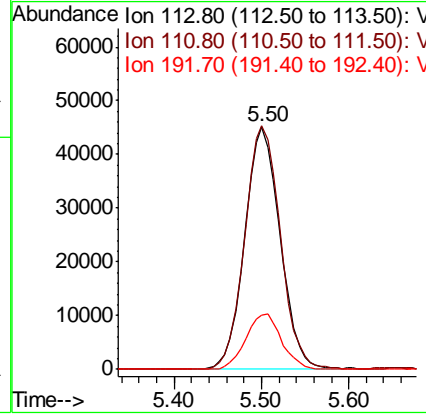
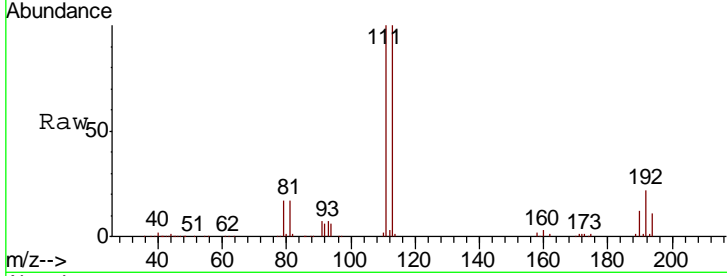




#35  
 Dibromofluoromethane  
 Concen: 48.568 ug/l  
 RT: 5.50 min Scan# 713  
 Delta R.T. -0.00 min  
 Lab File: VX010274.D  
 Acq: 13 Jun 2019 15:49

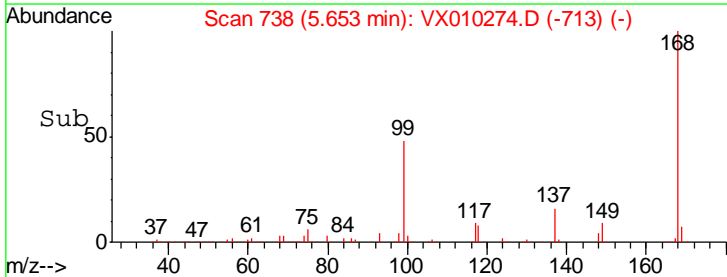
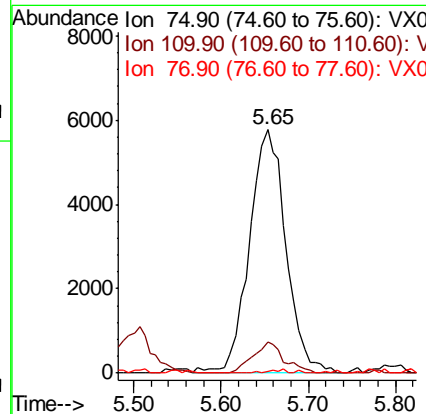
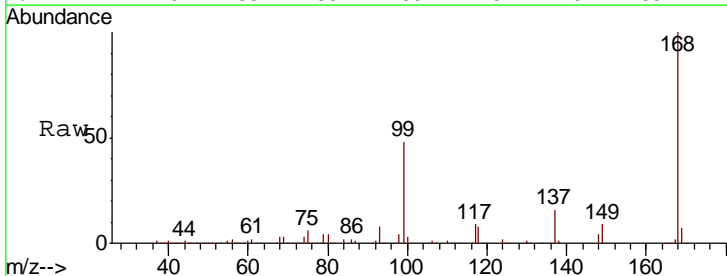
Instrument :  
 MSVOA\_X  
 ClientSampled :

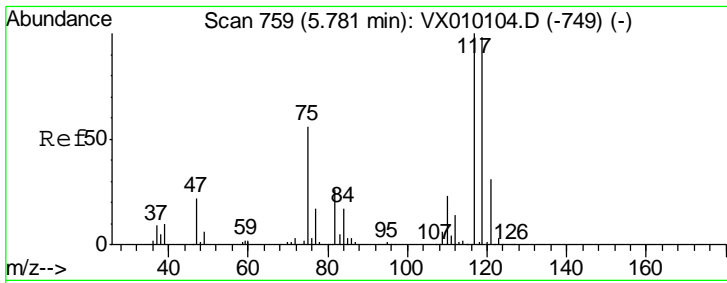
Tgt Ion	Resp	Lower	Upper
113	126409		
111	101.6	82.2	123.2
192	23.2	17.1	25.7



#36  
 1,1-Dichloropropene  
 Concen: 4.862 ug/l  
 RT: 5.65 min Scan# 738  
 Delta R.T. -0.15 min  
 Lab File: VX010274.D  
 Acq: 13 Jun 2019 15:49

Tgt Ion	Resp	Lower	Upper
75	16737		
110	10.9	16.7	50.1#
77	0.7	25.0	37.4#

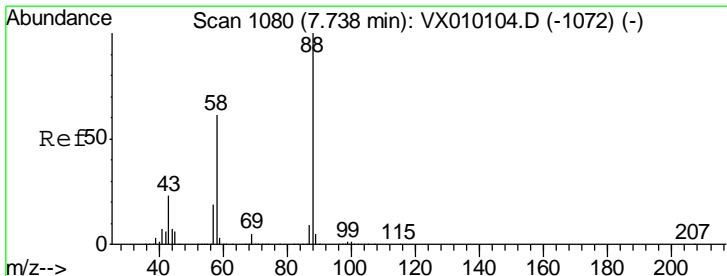
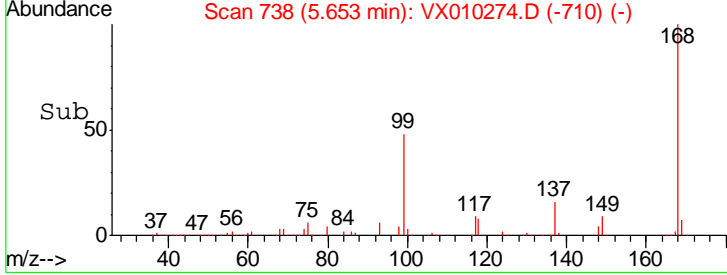
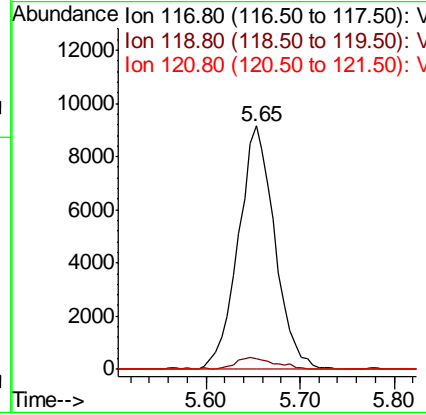
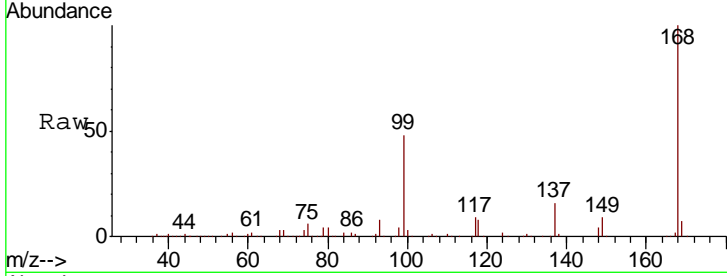




#38  
 Carbon Tetrachloride  
 Concen: 6.327 ug/l  
 RT: 5.65 min Scan# 738  
 Delta R.T. -0.13 min  
 Lab File: VX010274.D  
 Acq: 13 Jun 2019 15:49

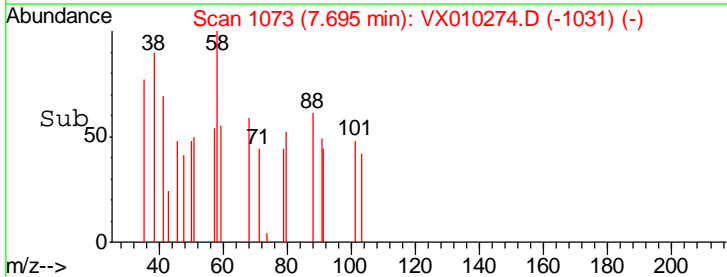
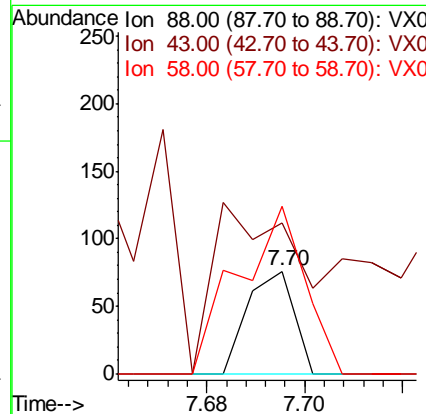
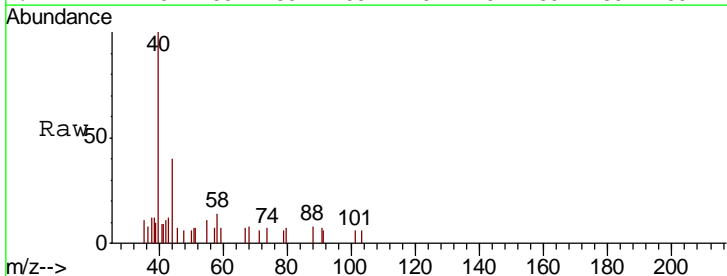
Instrument :  
 MSVOA\_X  
 ClientSampled :

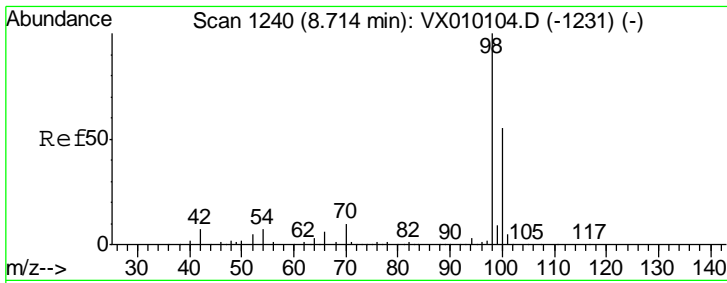
Tgt Ion	Resp	Lower	Upper
117	100		
119	4.2	77.3	115.9#
121	0.0	25.4	38.0#



#49  
 1,4-Dioxane  
 Concen: 0.626 ug/l  
 RT: 7.70 min Scan# 1073  
 Delta R.T. -0.04 min  
 Lab File: VX010274.D  
 Acq: 13 Jun 2019 15:49

Tgt Ion	Resp	Lower	Upper
88	100		
43	416.0	30.2	45.4#
58	236.0	64.0	96.0#

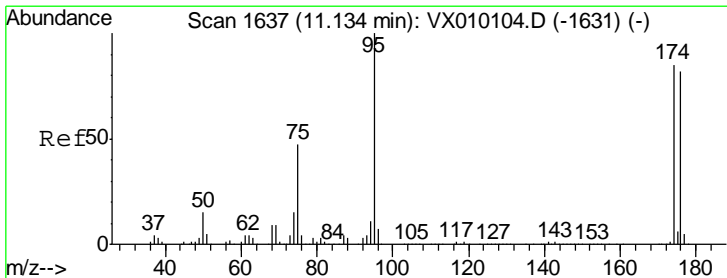
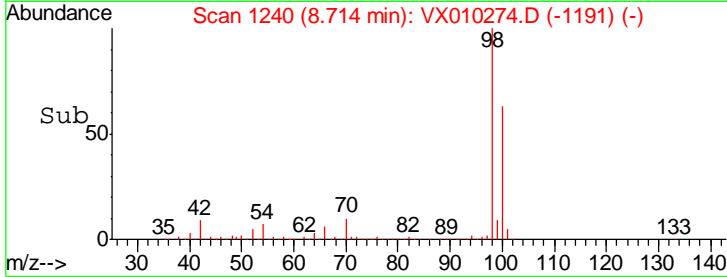
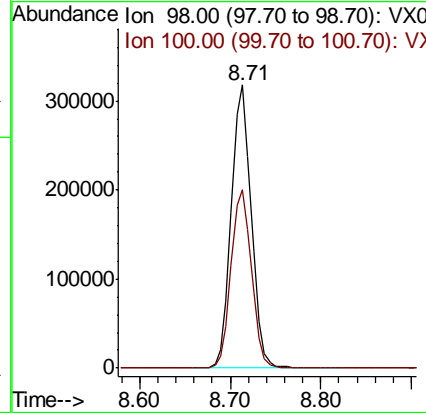
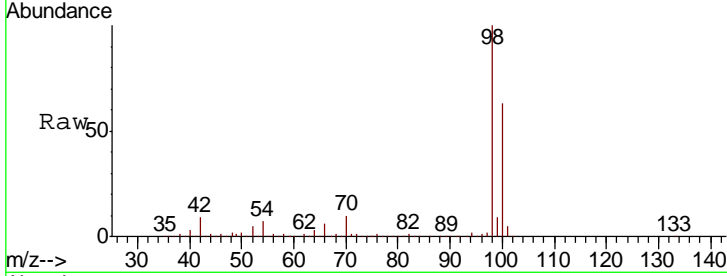




#50  
 Toluene-d8  
 Concen: 50.002 ug/l  
 RT: 8.71 min Scan# 1240  
 Delta R.T. 0.00 min  
 Lab File: VX010274.D  
 Acq: 13 Jun 2019 15:49

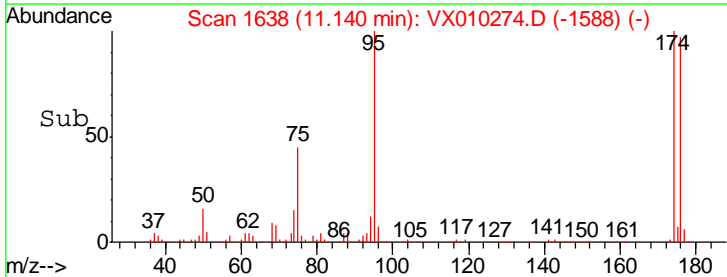
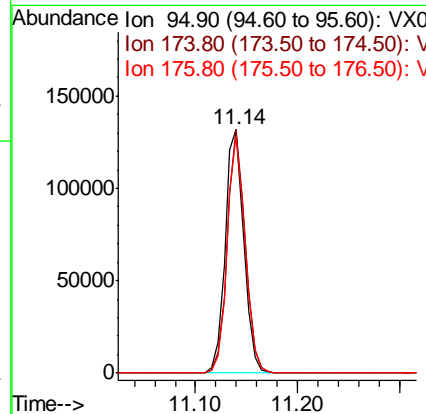
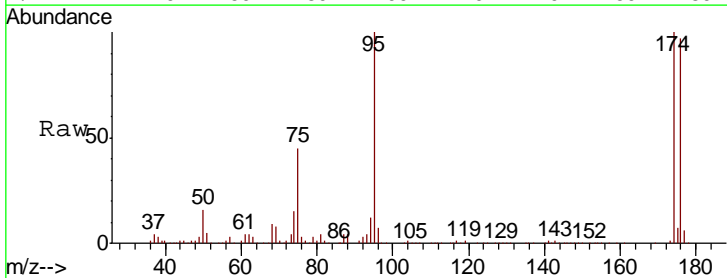
Instrument :  
 MSVOA\_X  
 ClientSampled :

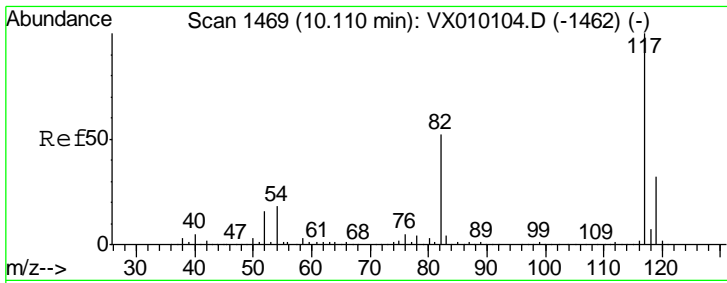
Tgt Ion: 98 Resp: 487753  
 Ion Ratio Lower Upper  
 98 100  
 100 64.3 51.5 77.3



#62  
 4-Bromofluorobenzene  
 Concen: 46.425 ug/l  
 RT: 11.14 min Scan# 1638  
 Delta R.T. 0.01 min  
 Lab File: VX010274.D  
 Acq: 13 Jun 2019 15:49

Tgt Ion: 95 Resp: 169124  
 Ion Ratio Lower Upper  
 95 100  
 174 95.0 0.0 160.4  
 176 93.1 0.0 154.6

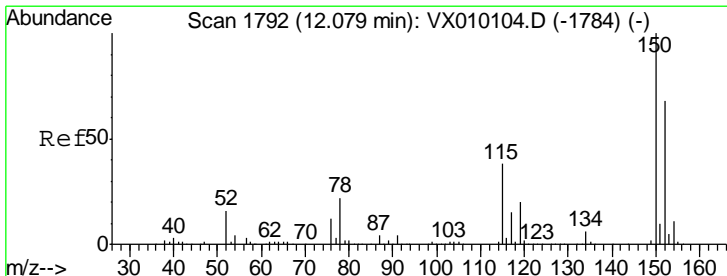
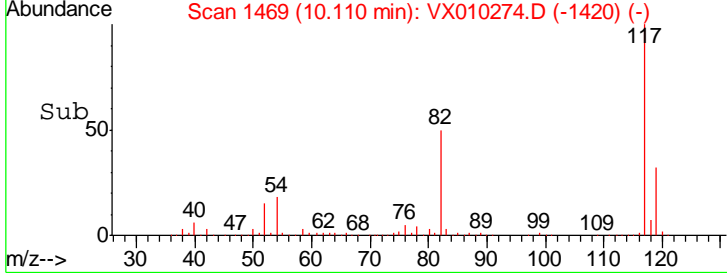
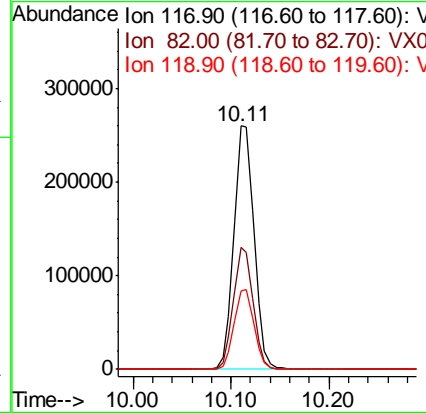
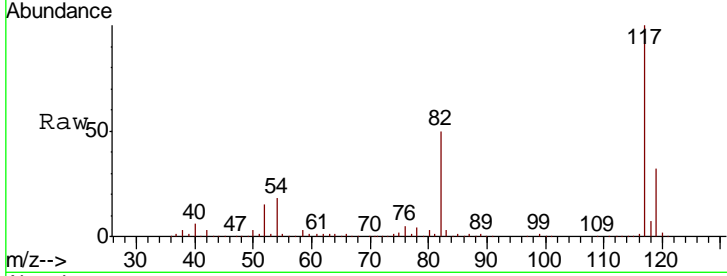




#63  
 Chlorobenzene-d5  
 Concen: 50.000 ug/l  
 RT: 10.11 min Scan# 1469  
 Delta R.T. -0.00 min  
 Lab File: VX010274.D  
 Acq: 13 Jun 2019 15:49

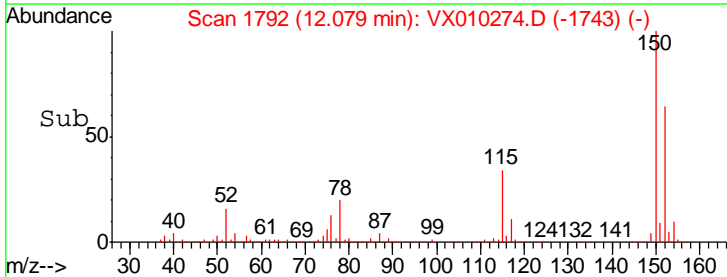
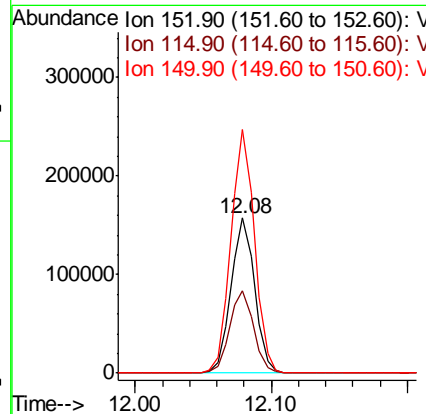
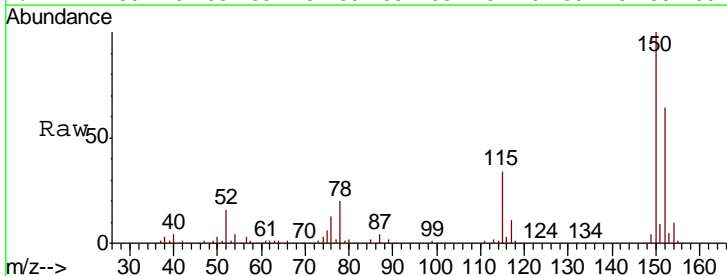
Instrument : MSVOA\_X  
 ClientSampled :

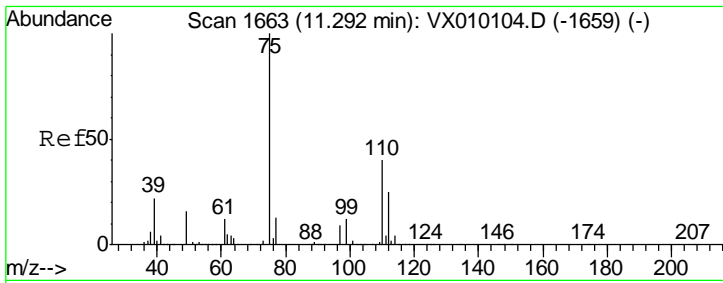
Tgt Ion	Resp	Lower	Upper
117	373935		
82	50.1	49.2	73.8
119	32.0	25.2	37.8



#72  
 1,4-Dichlorobenzene-d4  
 Concen: 50.000 ug/l  
 RT: 12.08 min Scan# 1792  
 Delta R.T. -0.00 min  
 Lab File: VX010274.D  
 Acq: 13 Jun 2019 15:49

Tgt Ion	Resp	Lower	Upper
152	189430		
115	53.6	41.4	124.2
150	156.6	0.0	345.2

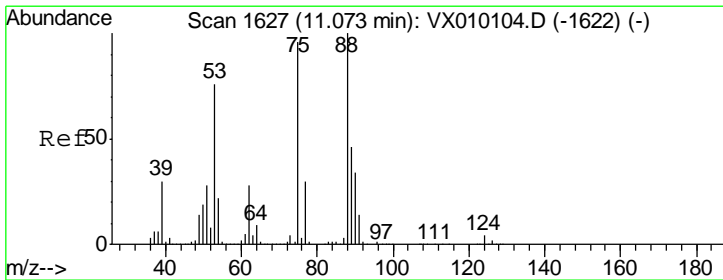
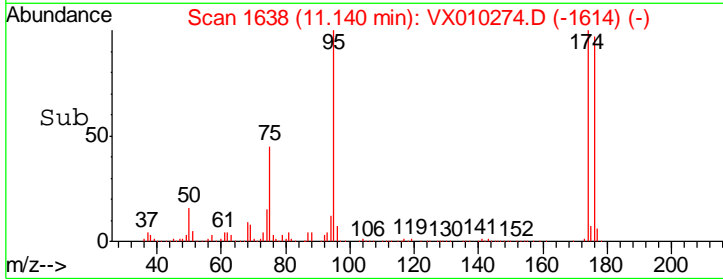
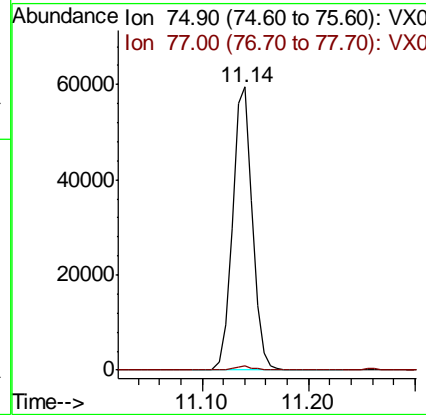
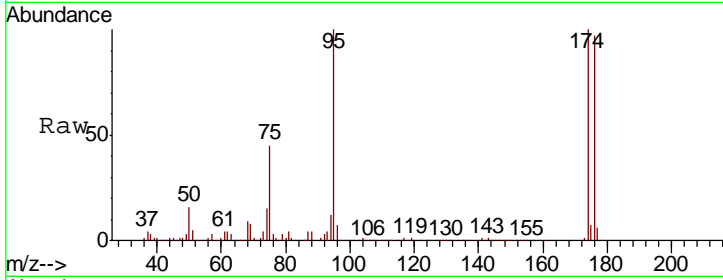




#76  
 1,2,3-Trichloropropane  
 Concen: 20.487 ug/l  
 RT: 11.14 min Scan# 1638  
 Delta R.T. -0.15 min  
 Lab File: VX010274.D  
 Acq: 13 Jun 2019 15:49

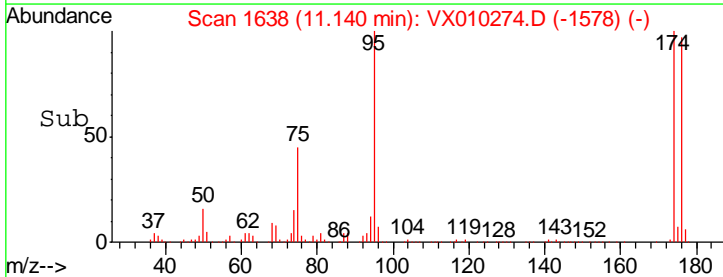
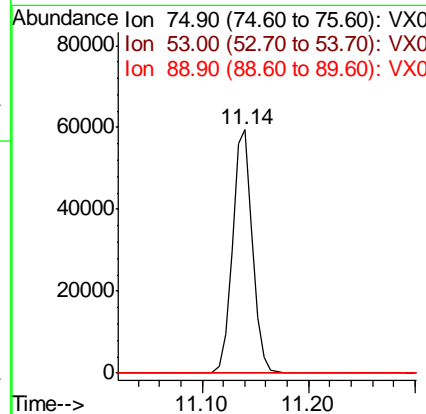
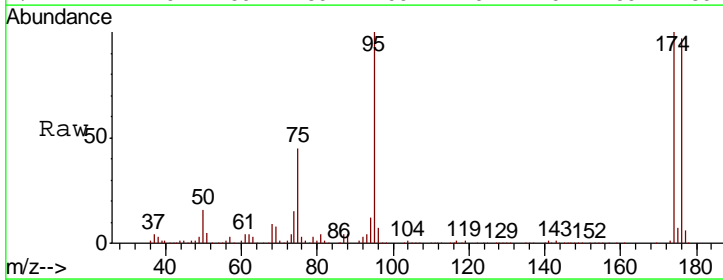
Instrument :  
 MSVOA\_X  
 ClientSampled :

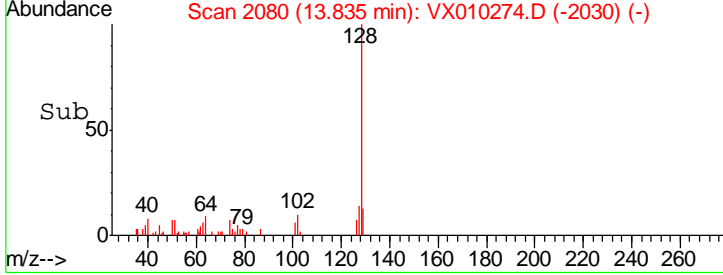
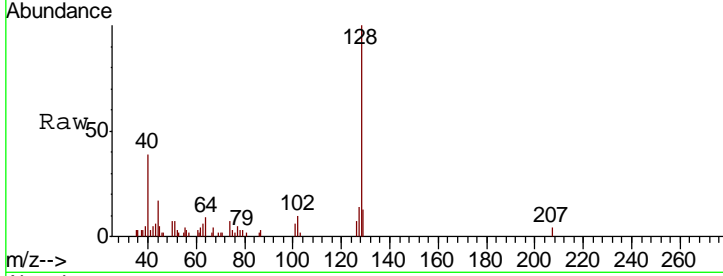
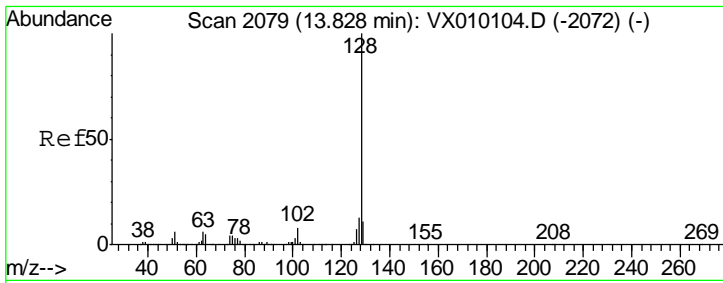
Tgt Ion: 75 Resp: 77626  
 Ion Ratio Lower Upper  
 75 100  
 77 1.4 22.1 66.1#



#81  
 trans-1,4-Dichloro-2-butene  
 Concen: 45.265 ug/l  
 RT: 11.14 min Scan# 1638  
 Delta R.T. 0.07 min  
 Lab File: VX010274.D  
 Acq: 13 Jun 2019 15:49

Tgt Ion: 75 Resp: 77626  
 Ion Ratio Lower Upper  
 75 100  
 53 0.2 79.8 119.6#  
 89 0.0 34.2 51.4#





#95  
 Naphthalene  
 Concen: 0.281 ug/l  
 RT: 13.83 min Scan# 2080  
 Delta R.T. 0.01 min  
 Lab File: VX010274.D  
 Acq: 13 Jun 2019 15:49

Instrument : MSVOA\_X  
 ClientSampled :

Tot Ion	Ratio	Lower	Upper
128	100		
127	13.9	10.6	16.0
129	12.2	8.8	13.2

