

Data Path : Z:\VOASRV\HPCHEM1\MSVOA X\DATA\VX061319\  
 Data File : VX010278.D  
 Acq On : 13 Jun 2019 17:22  
 Operator : JC/SP  
 Sample : K3341-02  
 Misc : 5.0mL/MSVOA X/WATER  
 ALS Vial : 13 Sample Multiplier: 1

Instrument :  
 MSVOA\_X  
 ClientSampleId :  
 FB-6-12-19

Integration Parameters: RTEINT.P

Integrator: RTE  
 Smoothing : ON Filtering: 5  
 Sampling : 1 Min Area: 3 % of largest Peak  
 Start Thrs: 0.2 Max Peaks: 100  
 Stop Thrs : 0 Peak Location: TOP

If leading or trailing edge < 100 prefer < Baseline drop else tangent >  
 Peak separation: 5

Method : Z:\VOASRV\HPCHEM1\MSVOA\_X\METHOD\82X060719W.M  
 Title : SW846 8260

Signal : TIC

peak #	R.T. min	first scan	max scan	last scan	PK TY	peak height	corr. area	corr. % max.	% of total
1	1.282	17	21	25	rBV	36800	43711	3.06%	0.544%
2	2.605	234	238	244	rVB	12979	22191	1.55%	0.276%
3	5.501	701	713	724	rBV	171342	492629	34.47%	6.132%
4	5.659	728	739	756	rVB	301866	853358	59.71%	10.622%
5	6.061	795	805	823	rVB	162435	426159	29.82%	5.304%
6	6.860	925	936	951	rBV	445640	1037575	72.60%	12.915%
7	8.713	1233	1240	1257	rBV	915633	1429156	100.00%	17.789%
8	10.110	1463	1469	1480	rBV	887079	1214610	84.99%	15.118%
9	11.134	1632	1637	1644	rBV	743681	962588	67.35%	11.981%
10	12.079	1787	1792	1799	rBV	929437	1153252	80.69%	14.354%
11	14.091	2119	2122	2127	rBV2	18440	26844	1.88%	0.334%
12	14.810	2237	2240	2243	rVB	20902	23777	1.66%	0.296%
13	15.273	2313	2316	2319	rVB2	13712	16650	1.17%	0.207%
14	15.554	2356	2362	2369	rVB3	44011	77935	5.45%	0.970%
15	15.682	2380	2383	2387	rBV2	11335	18801	1.32%	0.234%
16	15.724	2387	2390	2398	rVB3	14286	25344	1.77%	0.315%
17	16.169	2458	2463	2470	rBV5	12620	26811	1.88%	0.334%
18	16.462	2503	2511	2517	rBV2	53586	104479	7.31%	1.300%
19	16.688	2539	2548	2553	rBV4	17760	43207	3.02%	0.538%
20	16.749	2553	2558	2564	rVB2	19363	35066	2.45%	0.436%

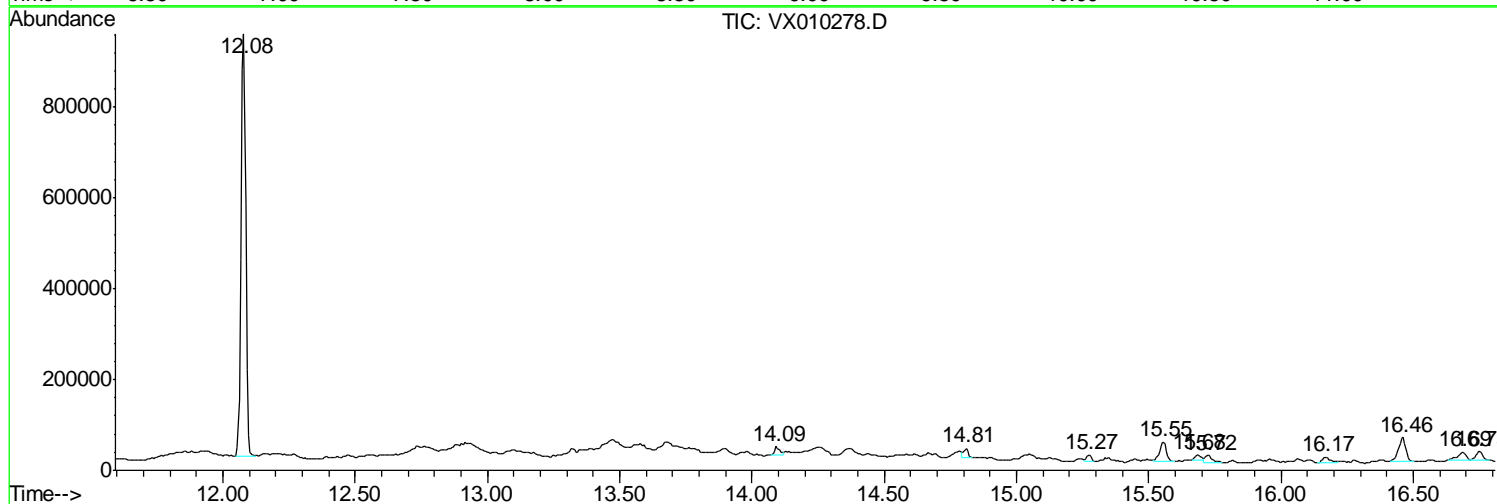
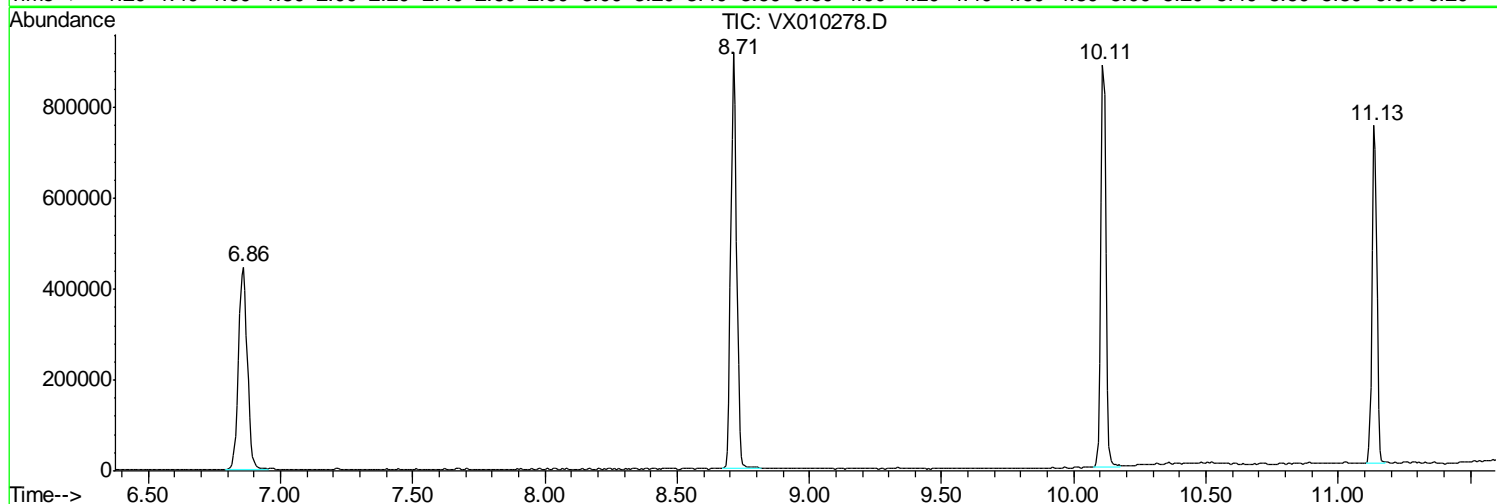
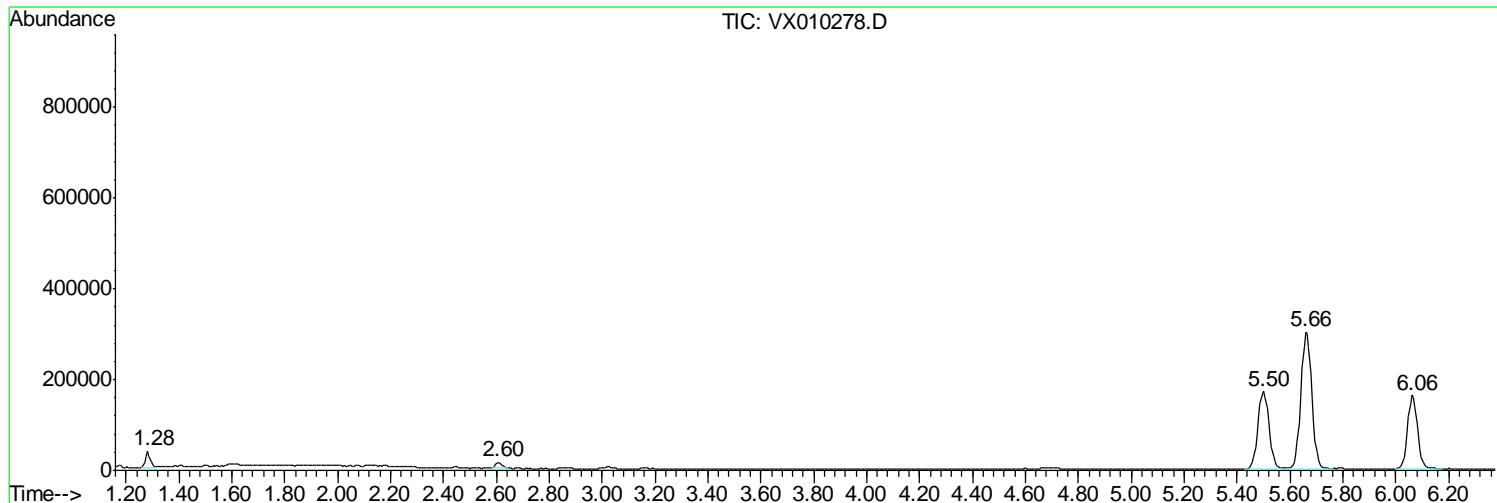
Sum of corrected areas: 8034143

Data Path : Z:\VOASRV\HPCHEM1\MSVOA X\DATA\VX061319\  
 Data File : VX010278.D  
 Acq On : 13 Jun 2019 17:22  
 Operator : JC/SP  
 Sample : K3341-02  
 Misc : 5.0mL/MSVOA X/WATER  
 ALS Vial : 13 Sample Multiplier: 1

Instrument :  
 MSVOA\_X  
 ClientSampled :  
 FB-6-12-19

Quant Method : Z:\VOASRV\HPCHEM1\MSVOA\_X\METHOD\82X060719W.M  
 Quant Title : SW846 8260

TIC Library : C:\DATABASE\NIST11.L  
 TIC Integration Parameters: LSCINT.P



Data Path : Z:\VOASRV\HPCHEM1\MSVOA\_X\DATA\VX061319\  
Data File : VX010278.D  
Acq On : 13 Jun 2019 17:22  
Operator : JC/SP  
Sample : K3341-02  
Misc : 5.0mL/MSVOA\_X/WATER  
ALS Vial : 13 Sample Multiplier: 1

Instrument :  
MSVOA\_X  
ClientSampleId :  
FB-6-12-19

Quant Method : Z:\VOASRV\HPCHEM1\MSVOA\_X\METHOD\82X060719W.M  
Quant Title : SW846 8260

TIC Library : C:\DATABASE\NIST11.L  
TIC Integration Parameters: LSCINT.P

No Library Search Compounds Detected

\*\*\*\*\*

Data Path : Z:\VOASRV\HPCHEM1\MSVOA\_X\DATA\VX061319\  
Data File : VX010278.D  
Acq On : 13 Jun 2019 17:22  
Operator : JC/SP  
Sample : K3341-02  
Misc : 5.0mL/MSVOA\_X/WATER  
ALS Vial : 13 Sample Multiplier: 1

Instrument :  
MSVOA\_X  
ClientSampleId :  
FB-6-12-19

Quant Method : Z:\VOASRV\HPCHEM1\MSVOA\_X\METHOD\82X060719W.M  
Quant Title : SW846 8260

TIC Library : C:\DATABASE\NIST11.L  
TIC Integration Parameters: LSCINT.P

TIC Top Hit name	RT	EstConc	Units	Response	--Internal Standard--			
					#	RT	Resp	Conc

---