

Data Path : Z:\voasrv\HPCHEM1\MSVOA\_X\Data\VX061322\  
 Data File : VX029439.D  
 Acq On : 14 Jun 2022 01:54  
 Operator : JC/MD  
 Sample : N3248-07DL 40X  
 Misc : 5.0mL/MSVOA\_X/WATER  
 ALS Vial : 41 Sample Multiplier: 1

Instrument :  
 MSVOA\_X  
 ClientSampleId :  
 EXYX7DL

Quant Time: Jun 14 06:44:36 2022  
 Quant Method : Z:\voasrv\HPCHEM1\MSVOA\_X\Method\SFAMXML061322WMA.M  
 Quant Title : VOC Analysis  
 QLast Update : Tue Jun 14 06:26:43 2022  
 Response via : Initial Calibration

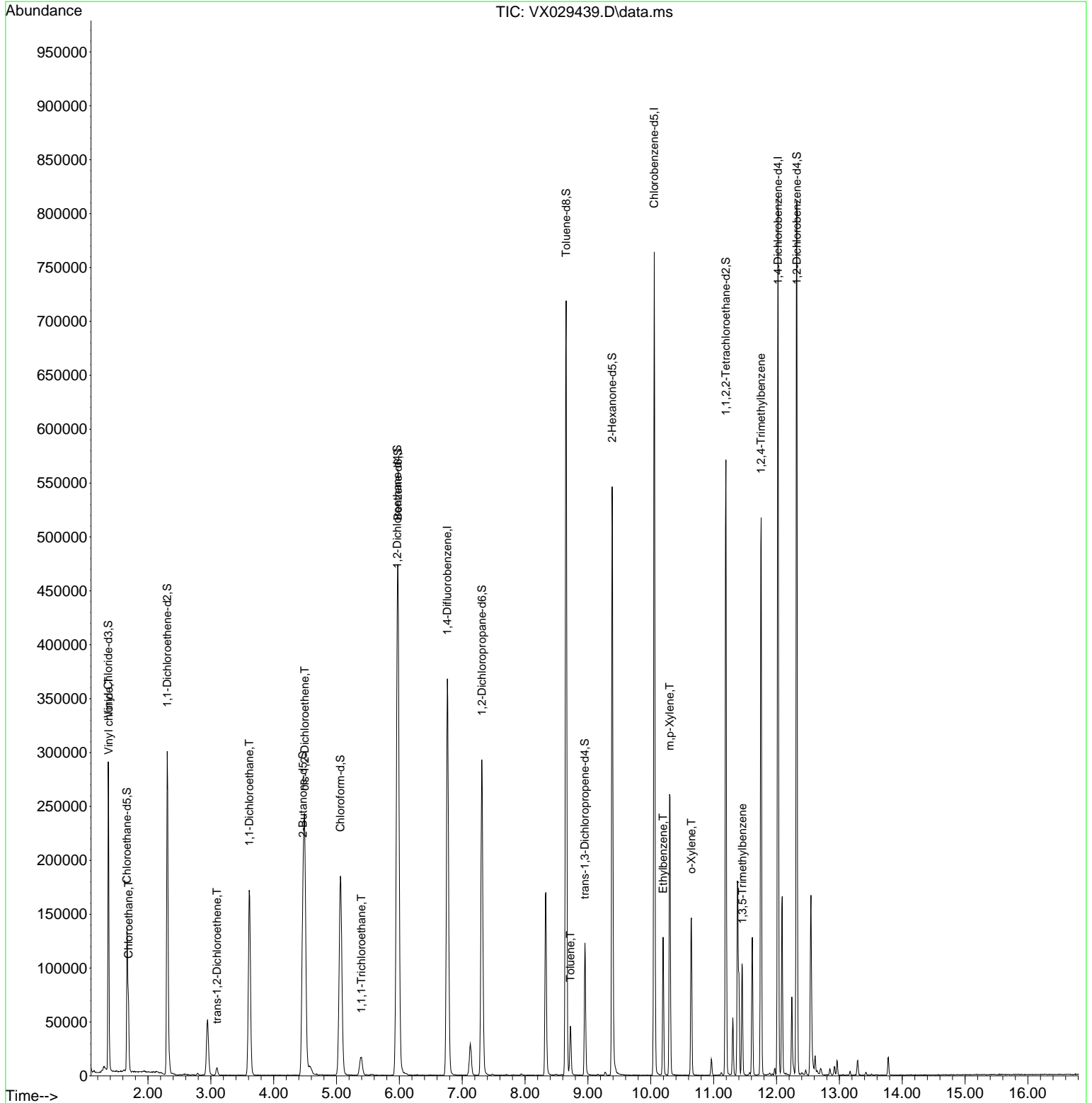
Compound	R.T.	QIon	Response	Conc	Units	Dev(Min)
Internal Standards						
1) 1,4-Difluorobenzene	6.763	114	381020	50.000	ug/L	0.00
28) Chlorobenzene-d5	10.055	117	339422	50.000	ug/L	0.00
58) 1,4-Dichlorobenzene-d4	12.024	152	161839	50.000	ug/L	0.00
System Monitoring Compounds						
4) Vinyl Chloride-d3	1.368	65	118364	40.122	ug/L	0.00
Spiked Amount	50.000	Range 60 - 135	Recovery =	80.240%		
7) Chloroethane-d5	1.666	69	90840	49.549	ug/L	0.00
Spiked Amount	50.000	Range 70 - 130	Recovery =	99.100%		
11) 1,1-Dichloroethene-d2	2.307	63	165538	31.144	ug/L	0.00
Spiked Amount	50.000	Range 60 - 125	Recovery =	62.280%		
21) 2-Butanone-d5	4.465	46	221448	99.005	ug/L	0.00
Spiked Amount	100.000	Range 40 - 130	Recovery =	99.010%		
24) Chloroform-d	5.062	84	244183	43.352	ug/L	0.00
Spiked Amount	50.000	Range 70 - 125	Recovery =	86.700%		
26) 1,2-Dichloroethane-d4	5.964	65	158948	43.647	ug/L	0.00
Spiked Amount	50.000	Range 70 - 125	Recovery =	87.300%		
32) Benzene-d6	5.977	84	487428	45.975	ug/L	0.00
Spiked Amount	50.000	Range 70 - 125	Recovery =	91.940%		
36) 1,2-Dichloropropane-d6	7.312	67	148683	47.881	ug/L	0.00
Spiked Amount	50.000	Range 70 - 120	Recovery =	95.760%		
41) Toluene-d8	8.653	98	434498	43.470	ug/L	0.00
Spiked Amount	50.000	Range 80 - 120	Recovery =	86.940%		
43) trans-1,3-Dichloroprop...	8.952	79	59354	38.763	ug/L	0.00
Spiked Amount	50.000	Range 60 - 125	Recovery =	77.520%		
47) 2-Hexanone-d5	9.385	63	168601	100.383	ug/L	0.00
Spiked Amount	100.000	Range 45 - 130	Recovery =	100.380%		
56) 1,1,2,2-Tetrachloroeth...	11.195	84	218193	47.920	ug/L	0.00
Spiked Amount	50.000	Range 65 - 120	Recovery =	95.840%		
66) 1,2-Dichlorobenzene-d4	12.323	152	161449	47.983	ug/L	0.00
Spiked Amount	50.000	Range 80 - 120	Recovery =	95.960%		
Target Compounds						
5) Vinyl chloride	1.374	62	85464	25.751	ug/L	99
8) Chloroethane	1.691	64	37871	22.254	ug/L	94
17) trans-1,2-Dichloroethene	3.099	96	3161	1.142	ug/L	96
19) 1,1-Dichloroethane	3.611	63	191465	39.176	ug/L	99
20) cis-1,2-Dichloroethene	4.495	96	126427	40.428	ug/L	94
30) 1,1,1-Trichloroethane	5.397	97	17322	3.680	ug/L	98
42) Toluene	8.720	91	29506	2.440	ug/L	96
52) Ethylbenzene	10.195	91	71348	5.390	ug/L	100
53) m,p-Xylene	10.299	106	63009	12.127	ug/L	95
54) o-Xylene	10.647	106	33273	6.493	ug/L	97
62) 1,3,5-Trimethylbenzene	11.457	105	48602	4.502	ug/L	97
63) 1,2,4-Trimethylbenzene	11.756	105	236656	22.078	ug/L	98

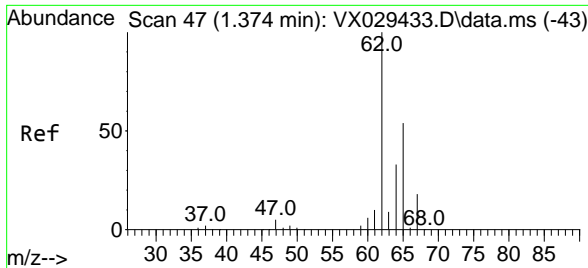
(#) = qualifier out of range (m) = manual integration (+) = signals summed

Data Path : Z:\voasrv\HPCHEM1\MSVOA\_X\Data\VX061322\  
 Data File : VX029439.D  
 Acq On : 14 Jun 2022 01:54  
 Operator : JC/MD  
 Sample : N3248-07DL 40X  
 Misc : 5.0mL/MSVOA\_X/WATER  
 ALS Vial : 41 Sample Multiplier: 1

Instrument :  
 MSVOA\_X  
 ClientSampleId :  
 EXYX7DL

Quant Time: Jun 14 06:44:36 2022  
 Quant Method : Z:\voasrv\HPCHEM1\MSVOA\_X\Method\SFAMXML061322WMA.M  
 Quant Title : VOC Analysis  
 QLast Update : Tue Jun 14 06:26:43 2022  
 Response via : Initial Calibration

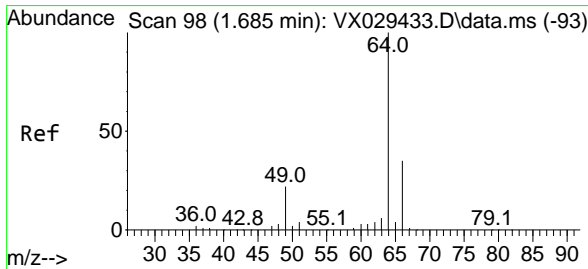
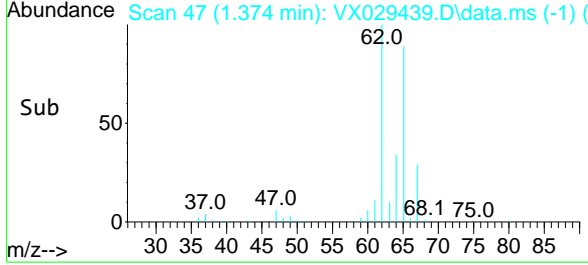
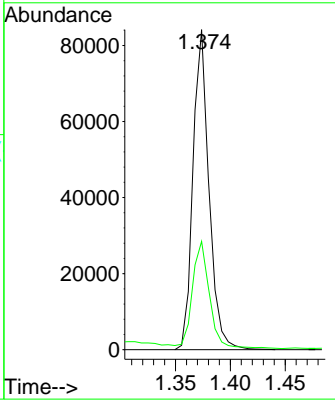
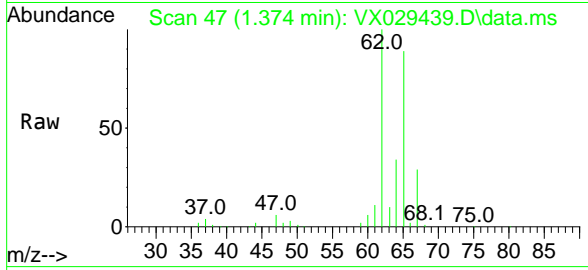




#5  
 Vinyl chloride  
 Concen: 25.751 ug/L  
 RT: 1.374 min Scan# 41  
 Delta R.T. 0.000 min  
 Lab File: VX029439.D  
 Acq: 14 Jun 2022 01:54

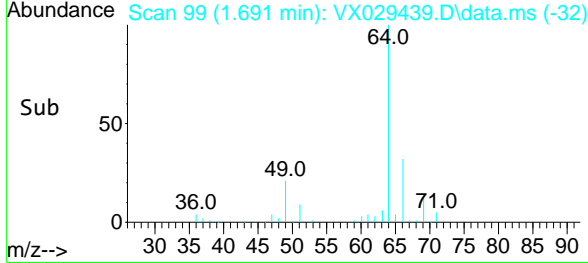
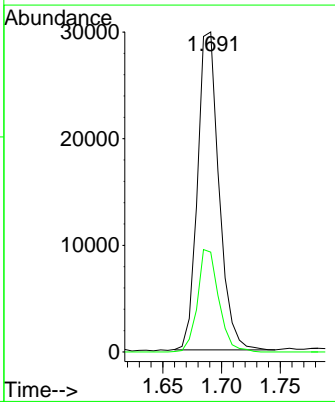
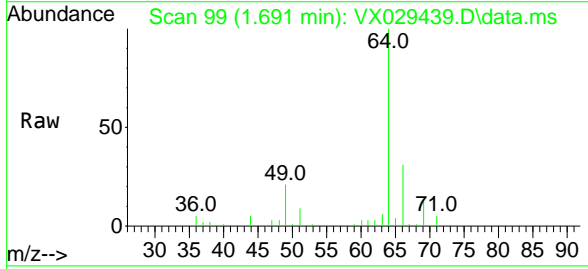
Instrument : MSVOA\_X  
 ClientSampleId : EXYX7DL

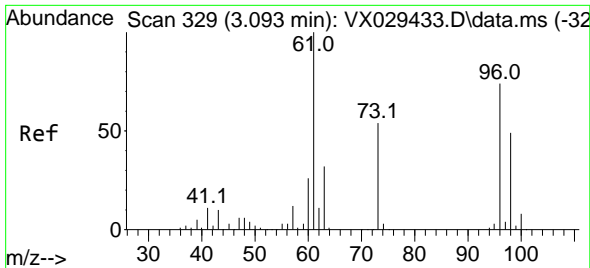
Tgt Ion: 62 Resp: 85464  
 Ion Ratio Lower Upper  
 62 100  
 64 33.9 23.3 43.3



#8  
 Chloroethane  
 Concen: 22.254 ug/L  
 RT: 1.691 min Scan# 99  
 Delta R.T. 0.006 min  
 Lab File: VX029439.D  
 Acq: 14 Jun 2022 01:54

Tgt Ion: 64 Resp: 37871  
 Ion Ratio Lower Upper  
 64 100  
 66 31.2 24.2 45.0



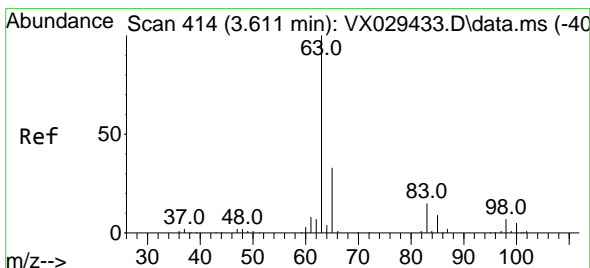
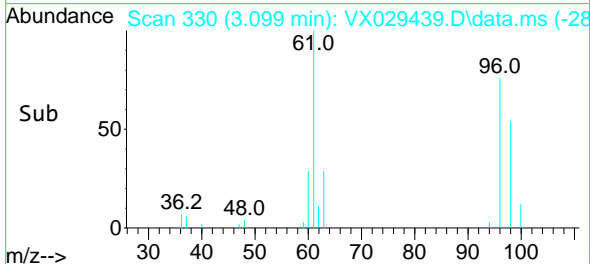
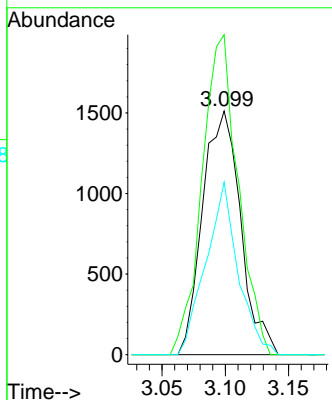
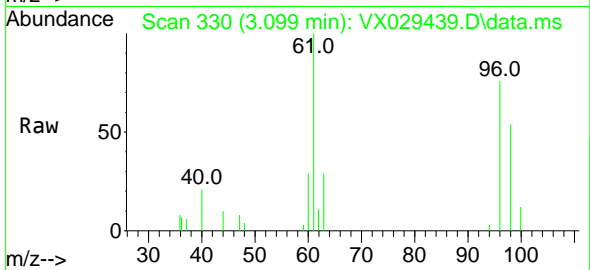


#17  
 trans-1,2-Dichloroethene  
 Concen: 1.142 ug/L  
 RT: 3.099 min Scan# 311  
 Delta R.T. 0.006 min  
 Lab File: VX029439.D  
 Acq: 14 Jun 2022 01:54

Instrument : MSVOA\_X  
 ClientSampleId : EXYX7DL

Tgt Ion: 96 Resp: 3161

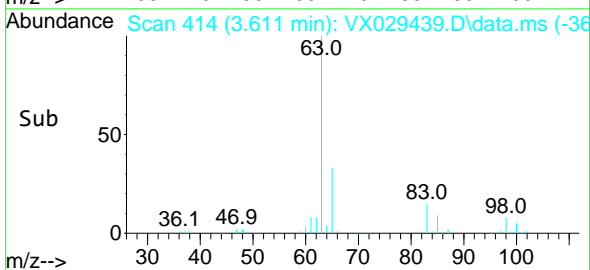
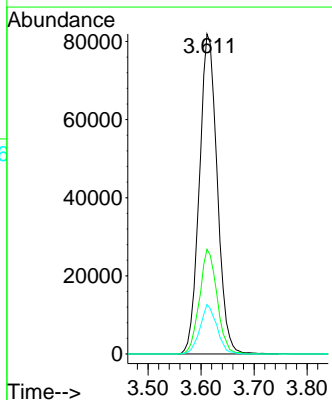
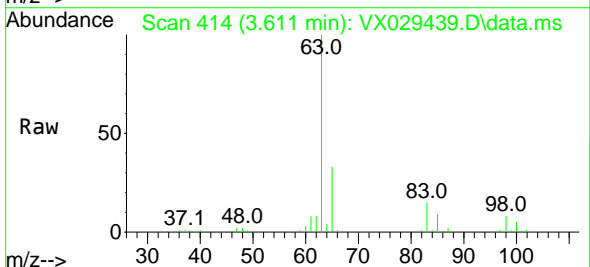
Ion	Ratio	Lower	Upper
96	100		
61	131.3	93.0	172.6
98	70.7	44.3	82.3

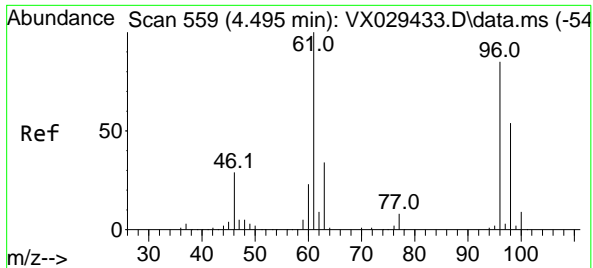


#19  
 1,1-Dichloroethane  
 Concen: 39.176 ug/L  
 RT: 3.611 min Scan# 414  
 Delta R.T. 0.000 min  
 Lab File: VX029439.D  
 Acq: 14 Jun 2022 01:54

Tgt Ion: 63 Resp: 191465

Ion	Ratio	Lower	Upper
63	100		
65	32.7	22.9	42.5
83	15.4	10.1	18.9

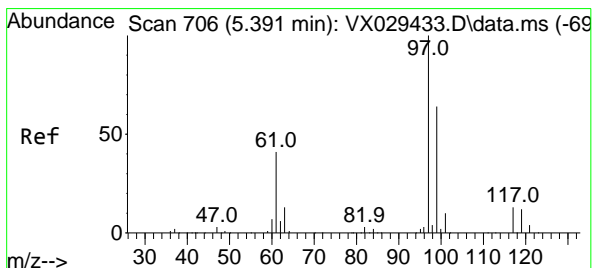
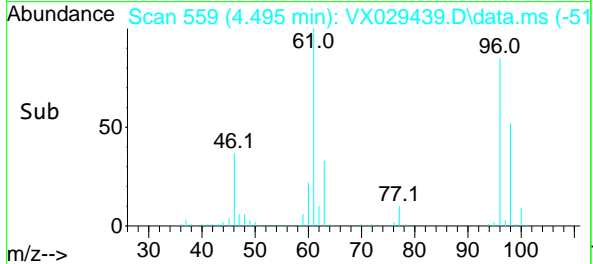
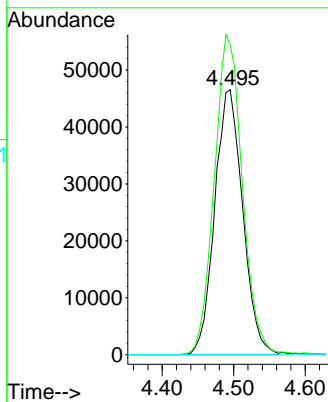
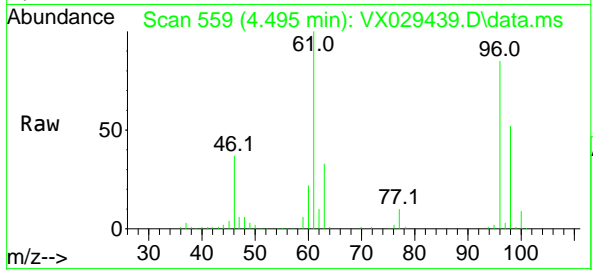




#20  
 cis-1,2-Dichloroethene  
 Concen: 40.428 ug/L  
 RT: 4.495 min Scan# 511  
 Delta R.T. 0.000 min  
 Lab File: VX029439.D  
 Acq: 14 Jun 2022 01:54

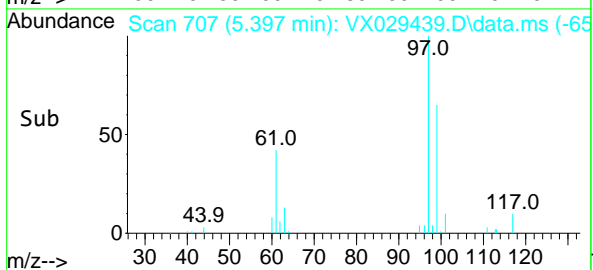
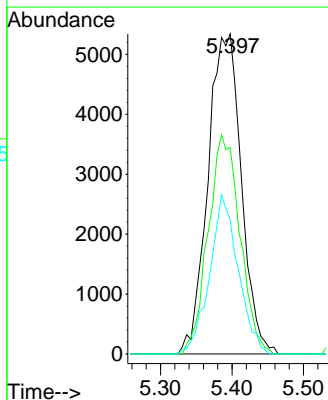
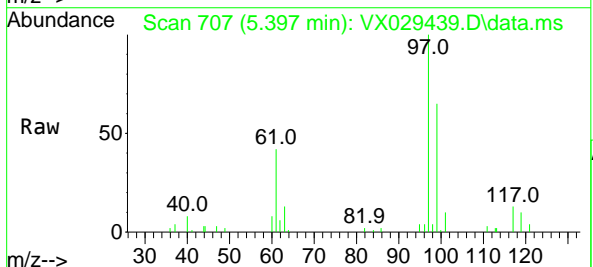
Instrument :  
 MSVOA\_X  
 ClientSampleId :  
 EXYX7DL

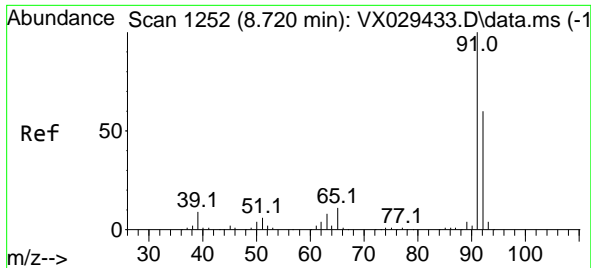
Tgt Ion: 96 Resp: 126427  
 Ion Ratio Lower Upper  
 96 100  
 61 117.0 86.7 161.1  
 68 0.0 0.0 0.0



#30  
 1,1,1-Trichloroethane  
 Concen: 3.680 ug/L  
 RT: 5.397 min Scan# 707  
 Delta R.T. 0.006 min  
 Lab File: VX029439.D  
 Acq: 14 Jun 2022 01:54

Tgt Ion: 97 Resp: 17322  
 Ion Ratio Lower Upper  
 97 100  
 99 65.3 51.5 77.3  
 61 42.6 35.2 52.8

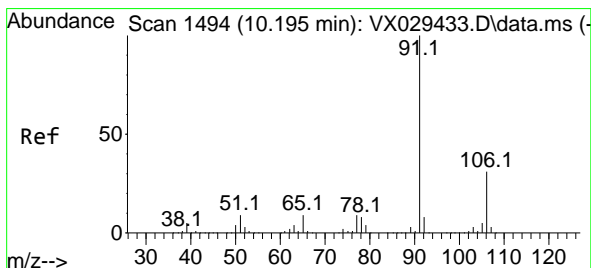
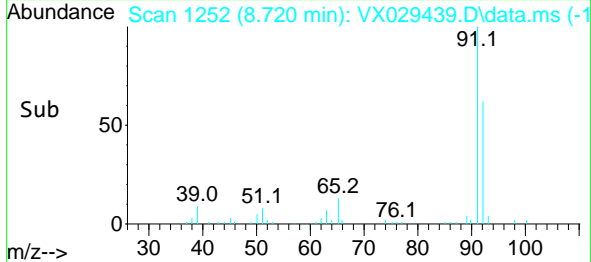
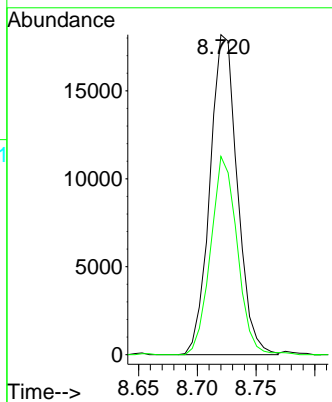
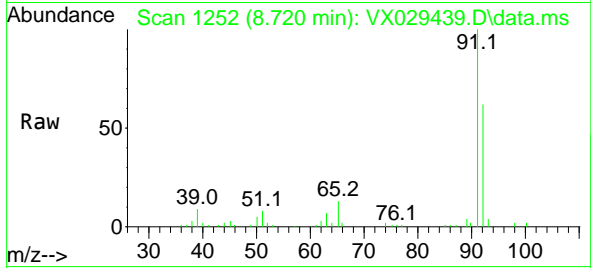




#42  
 Toluene  
 Concen: 2.440 ug/L  
 RT: 8.720 min Scan# 11  
 Delta R.T. 0.000 min  
 Lab File: VX029439.D  
 Acq: 14 Jun 2022 01:54

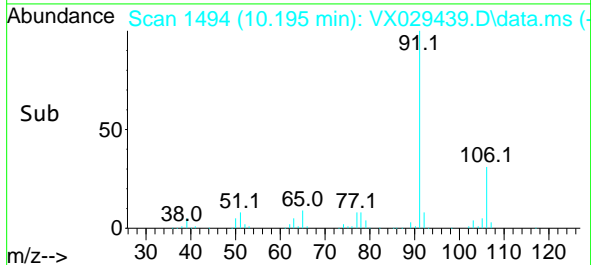
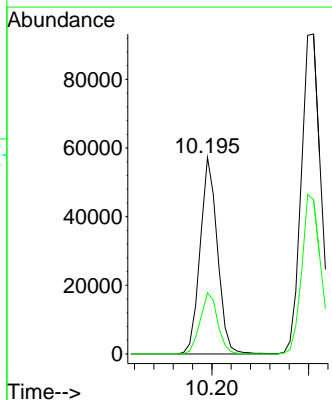
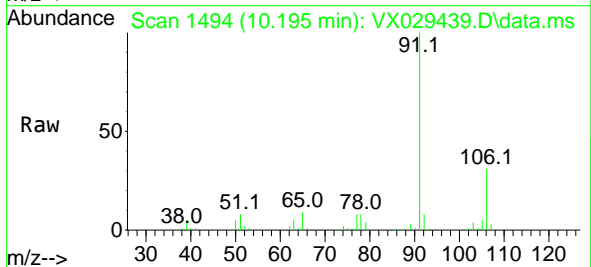
Instrument :  
 MSVOA\_X  
 ClientSampleId :  
 EXYX7DL

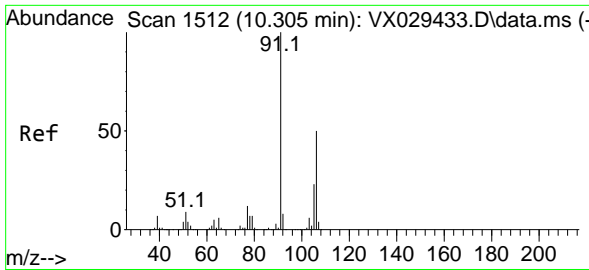
Tgt Ion: 91 Resp: 29506  
 Ion Ratio Lower Upper  
 91 100  
 92 61.9 41.5 77.1



#52  
 Ethylbenzene  
 Concen: 5.390 ug/L  
 RT: 10.195 min Scan# 1494  
 Delta R.T. 0.000 min  
 Lab File: VX029439.D  
 Acq: 14 Jun 2022 01:54

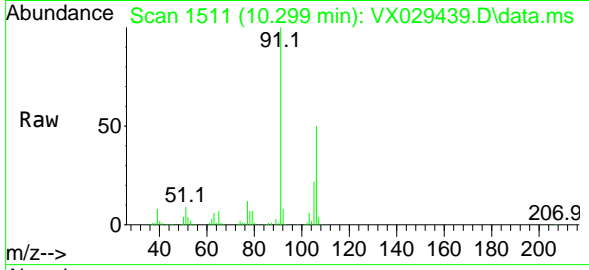
Tgt Ion: 91 Resp: 71348  
 Ion Ratio Lower Upper  
 91 100  
 106 31.2 21.7 40.3



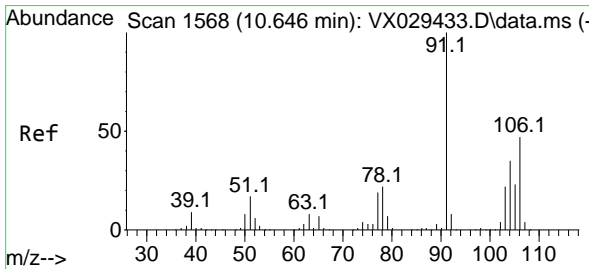
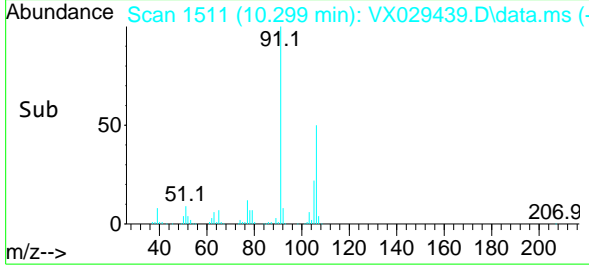
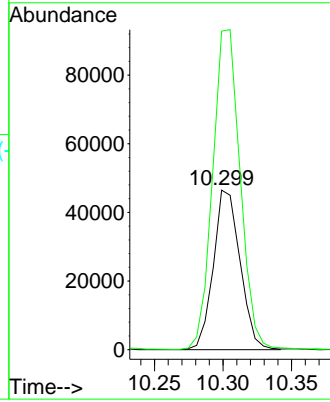


#53  
 m,p-Xylene  
 Concen: 12.127 ug/L  
 RT: 10.299 min Scan# 1511  
 Delta R.T. -0.006 min  
 Lab File: VX029439.D  
 Acq: 14 Jun 2022 01:54

Instrument : MSVOA\_X  
 ClientSampleId : EXYX7DL

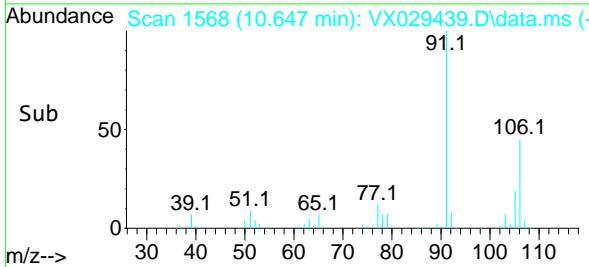
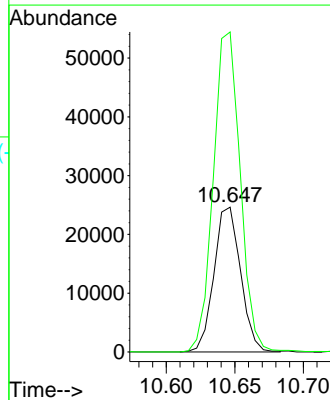
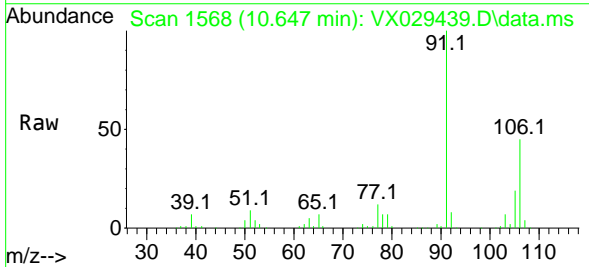


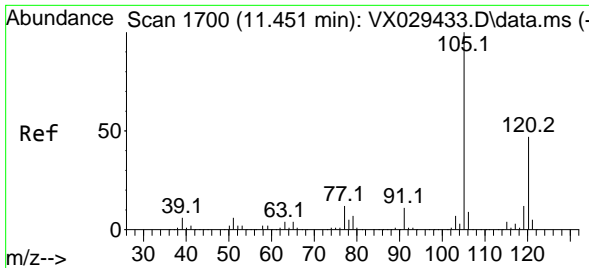
Tgt Ion:106 Resp: 63009  
 Ion Ratio Lower Upper  
 106 100  
 91 199.6 145.7 270.5



#54  
 o-Xylene  
 Concen: 6.493 ug/L  
 RT: 10.647 min Scan# 1568  
 Delta R.T. 0.000 min  
 Lab File: VX029439.D  
 Acq: 14 Jun 2022 01:54

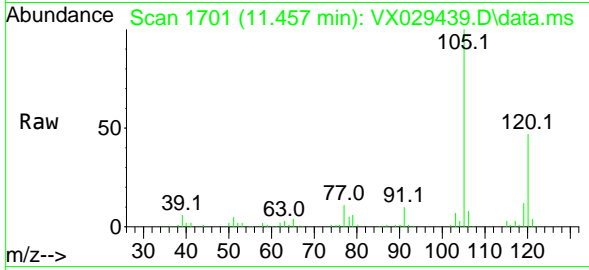
Tgt Ion:106 Resp: 33273  
 Ion Ratio Lower Upper  
 106 100  
 91 221.0 151.2 280.8



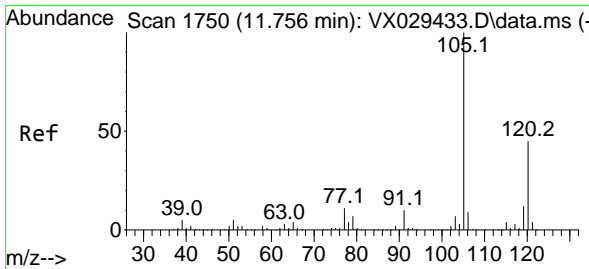
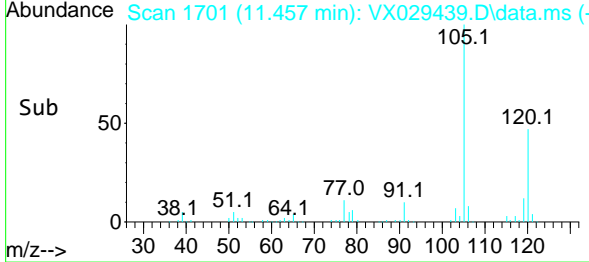
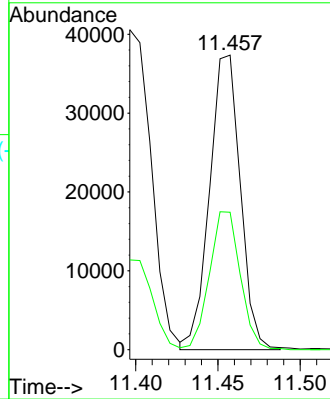


#62  
 1,3,5-Trimethylbenzene  
 Concen: 4.502 ug/L  
 RT: 11.457 min Scan# 1701  
 Delta R.T. 0.006 min  
 Lab File: VX029439.D  
 Acq: 14 Jun 2022 01:54

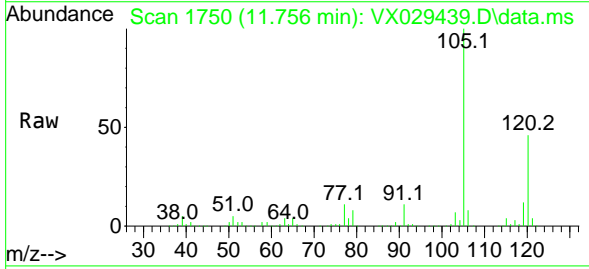
Instrument : MSVOA\_X  
 ClientSampleId : EXYX7DL



Tgt Ion:105 Resp: 48602  
 Ion Ratio Lower Upper  
 105 100  
 120 47.0 39.1 58.7



#63  
 1,2,4-Trimethylbenzene  
 Concen: 22.078 ug/L  
 RT: 11.756 min Scan# 1750  
 Delta R.T. 0.000 min  
 Lab File: VX029439.D  
 Acq: 14 Jun 2022 01:54



Tgt Ion:105 Resp: 236656  
 Ion Ratio Lower Upper  
 105 100  
 120 44.1 36.1 54.1

