

Data Path : Z:\voasrv\HPCHEM1\MSVOA\_X\Data\VX061324\  
 Data File : VX041859.D  
 Acq On : 13 Jun 2024 17:15  
 Operator : JC/MD  
 Sample : PB161467ZHE#14  
 Misc : 5.0mL/MSVOA\_X/WATER  
 ALS Vial : 21 Sample Multiplier: 1

Instrument :  
 MSVOA\_X  
 ClientSampleId :

Quant Time: Jun 14 01:50:21 2024  
 Quant Method : Z:\voasrv\HPCHEM1\MSVOA\_X\Method\82X052924W.M  
 Quant Title : SW846 8260  
 QLast Update : Thu May 30 07:36:24 2024  
 Response via : Initial Calibration

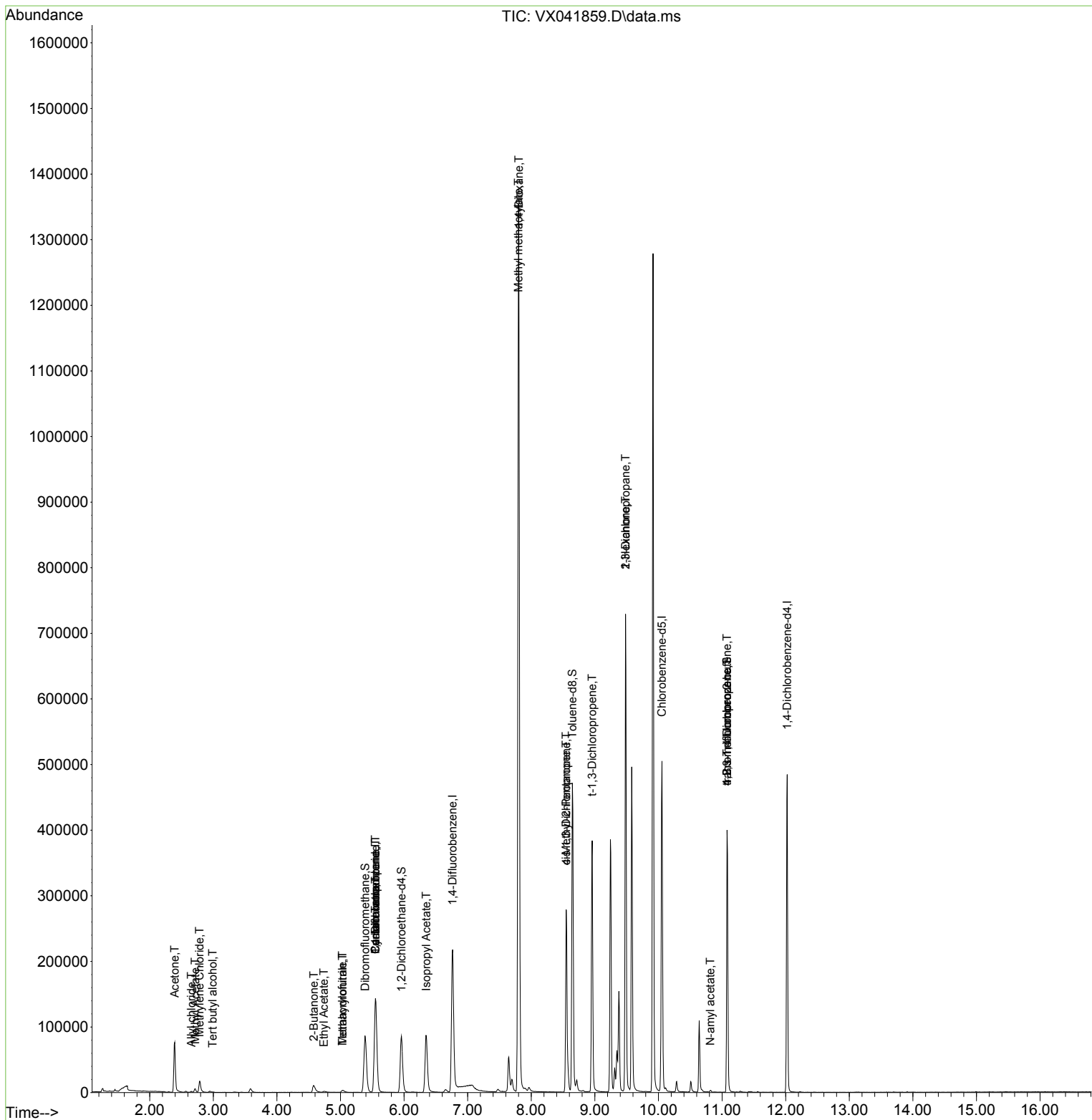
| Compound                      | R.T.   | QIon  | Response | Conc     | Units | Dev(Min) |
|-------------------------------|--------|-------|----------|----------|-------|----------|
| -----                         |        |       |          |          |       |          |
| Internal Standards            |        |       |          |          |       |          |
| 1) Pentafluorobenzene         | 5.550  | 168   | 159029   | 50.000   | ug/l  | # 0.00   |
| 34) 1,4-Difluorobenzene       | 6.763  | 114   | 247002   | 50.000   | ug/l  | 0.00     |
| 63) Chlorobenzene-d5          | 10.055 | 117   | 244420   | 50.000   | ug/l  | 0.00     |
| 72) 1,4-Dichlorobenzene-d4    | 12.024 | 152   | 114985   | 50.000   | ug/l  | 0.00     |
| System Monitoring Compounds   |        |       |          |          |       |          |
| 33) 1,2-Dichloroethane-d4     | 5.958  | 65    | 81259    | 41.662   | ug/l  | 0.00     |
| Spiked Amount                 | 50.000 | Range | 78 - 117 | Recovery | =     | 83.320%  |
| 35) Dibromofluoromethane      | 5.385  | 113   | 75832    | 44.404   | ug/l  | 0.00     |
| Spiked Amount                 | 50.000 | Range | 75 - 124 | Recovery | =     | 88.800%  |
| 50) Toluene-d8                | 8.646  | 98    | 292474   | 49.014   | ug/l  | 0.00     |
| Spiked Amount                 | 50.000 | Range | 92 - 112 | Recovery | =     | 98.020%  |
| 62) 4-Bromofluorobenzene      | 11.079 | 95    | 105983   | 48.123   | ug/l  | 0.00     |
| Spiked Amount                 | 50.000 | Range | 83 - 123 | Recovery | =     | 96.240%  |
| Target Compounds              |        |       |          |          |       |          |
|                               |        |       |          |          |       | Qvalue   |
| 11) Tert butyl alcohol        | 2.989  | 59    | 882      | 2.556    | ug/l  | # 78     |
| 14) Allyl chloride            | 2.654  | 41    | 1377     | 0.590    | ug/l  | # 42     |
| 16) Acetone                   | 2.392  | 43    | 87383    | 100.405  | ug/l  | 90       |
| 18) Methyl Acetate            | 2.715  | 43    | 7163     | 3.846    | ug/l  | 97       |
| 20) Methylene Chloride        | 2.782  | 84    | 9907     | 5.676    | ug/l  | 90       |
| 25) 2-Butanone                | 4.580  | 43    | 22190    | 18.305   | ug/l  | 93       |
| 29) Tetrahydrofuran           | 5.031  | 42    | 3533     | 4.621    | ug/l  | # 79     |
| 31) Cyclohexane               | 5.550  | 56    | 2239     | 0.972    | ug/l  | # 1      |
| 36) 1,1-Dichloropropene       | 5.550  | 75    | 9157     | 4.428    | ug/l  | # 51     |
| 37) Ethyl Acetate             | 4.739  | 43    | 3567     | 1.367    | ug/l  | # 82     |
| 38) Carbon Tetrachloride      | 5.550  | 117   | 13385    | 5.697    | ug/l  | # 15     |
| 41) Methacrylonitrile         | 5.031  | 41    | 2066     | 1.619    | ug/l  | # 41     |
| 43) Isopropyl Acetate         | 6.348  | 43    | 122947   | 31.205   | ug/l  | 95       |
| 48) Methyl methacrylate       | 7.799  | 41    | 111092   | 58.713   | ug/l  | # 45     |
| 49) 1,4-Dioxane               | 7.805  | 88    | 189      | 4.572    | ug/l  | # 1      |
| 51) 4-Methyl-2-Pentanone      | 8.549  | 43    | 99685    | 39.017   | ug/l  | # 46     |
| 53) t-1,3-Dichloropropene     | 8.957  | 75    | 808      | 0.376    | ug/l  | # 43     |
| 54) cis-1,3-Dichloropropene   | 8.549  | 75    | 47947    | 20.175   | ug/l  | # 51     |
| 57) 1,3-Dichloropropane       | 9.482  | 76    | 6512     | 2.372    | ug/l  | # 42     |
| 59) 2-Hexanone                | 9.482  | 43    | 82580    | 42.395   | ug/l  | # 55     |
| 74) N-amyl acetate            | 10.817 | 43    | 888      | 0.281    | ug/l  | # 44     |
| 76) 1,2,3-Trichloropropane    | 11.079 | 75    | 47704    | 23.778   | ug/l  | # 39     |
| 81) trans-1,4-Dichloro-2-b... | 11.079 | 75    | 47704    | 64.806   | ug/l  | # 5      |
| -----                         |        |       |          |          |       |          |

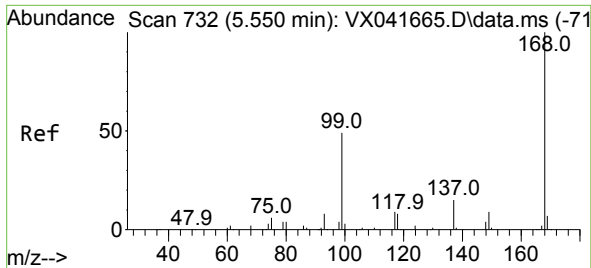
(#) = qualifier out of range (m) = manual integration (+) = signals summed

Data Path : Z:\voasrv\HPCHEM1\MSVOA\_X\Data\VX061324\  
 Data File : VX041859.D  
 Acq On : 13 Jun 2024 17:15  
 Operator : JC/MD  
 Sample : PB161467ZHE#14  
 Misc : 5.0mL/MSVOA\_X/WATER  
 ALS Vial : 21 Sample Multiplier: 1

Instrument :  
 MSVOA\_X  
 ClientSampleId :

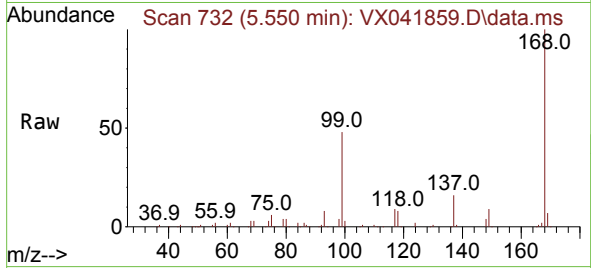
Quant Time: Jun 14 01:50:21 2024  
 Quant Method : Z:\voasrv\HPCHEM1\MSVOA\_X\Method\82X052924W.M  
 Quant Title : SW846 8260  
 QLast Update : Thu May 30 07:36:24 2024  
 Response via : Initial Calibration



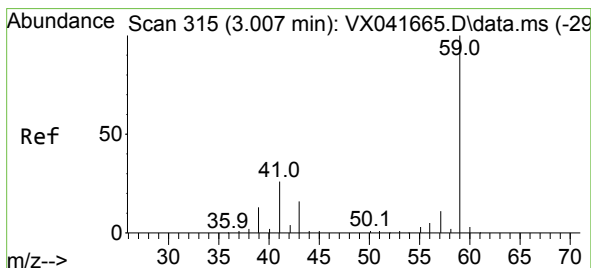
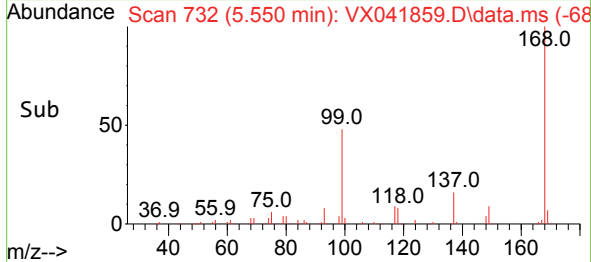
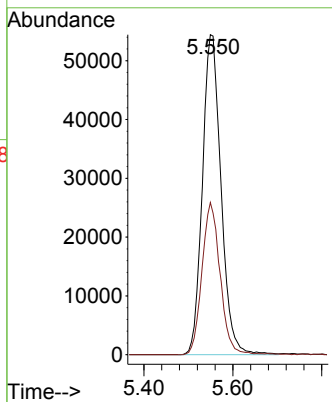


#1  
 Pentafluorobenzene  
 Concen: 50.000 ug/l  
 RT: 5.550 min Scan# 71  
 Delta R.T. -0.000 min  
 Lab File: VX041859.D  
 Acq: 13 Jun 2024 17:15

Instrument :  
 MSVOA\_X  
 ClientSampleId :

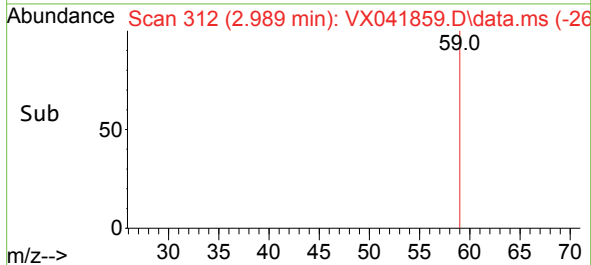
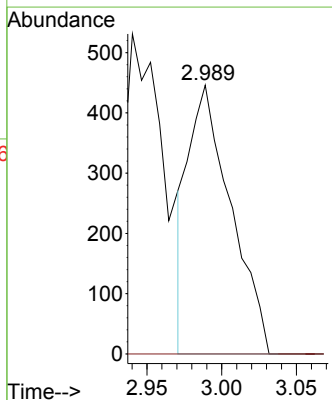
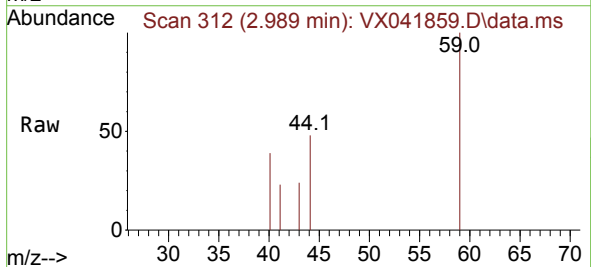


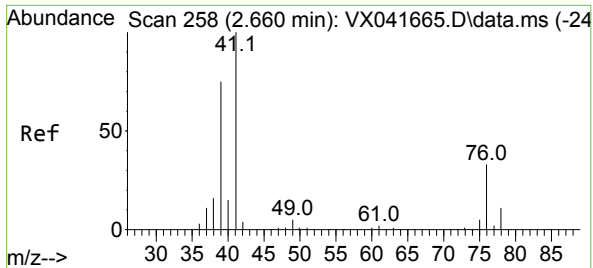
Tgt Ion:168 Resp: 159029  
 Ion Ratio Lower Upper  
 168 100  
 99 47.6 56.6 85.0#



#11  
 Tert butyl alcohol  
 Concen: 2.556 ug/l  
 RT: 2.989 min Scan# 312  
 Delta R.T. -0.018 min  
 Lab File: VX041859.D  
 Acq: 13 Jun 2024 17:15

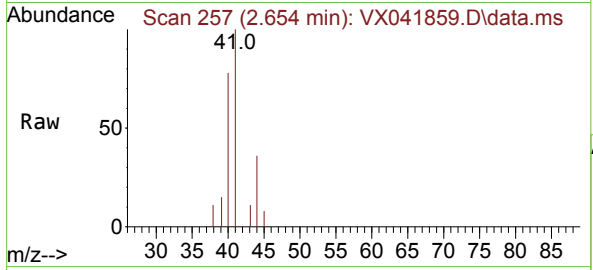
Tgt Ion: 59 Resp: 882  
 Ion Ratio Lower Upper  
 59 100  
 57 0.0 6.0 9.0#





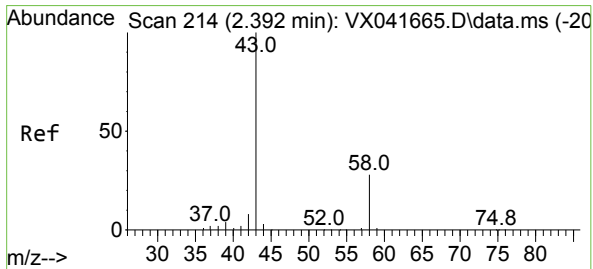
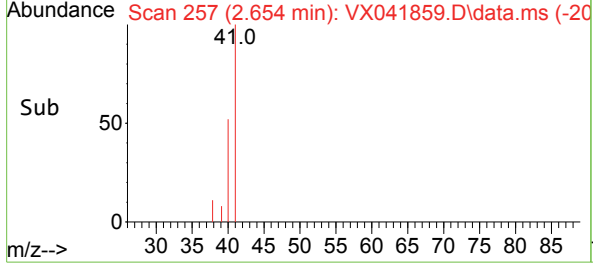
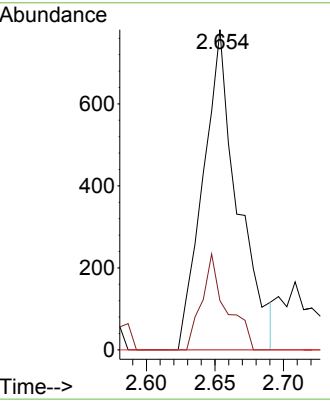
#14  
 Allyl chloride  
 Concen: 0.590 ug/l  
 RT: 2.654 min Scan# 214  
 Delta R.T. -0.006 min  
 Lab File: VX041859.D  
 Acq: 13 Jun 2024 17:15

Instrument : MSVOA\_X  
 ClientSampleId :



Tgt Ion: 41 Resp: 1377

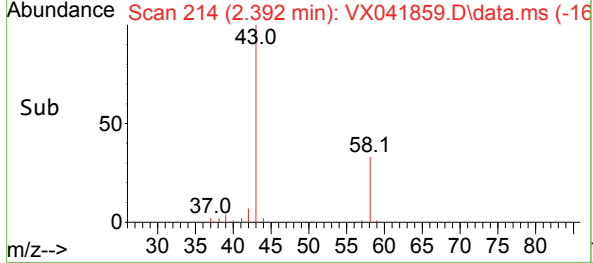
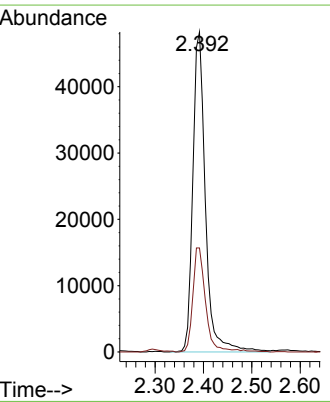
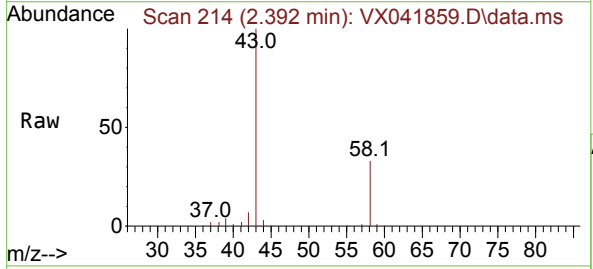
| Ion | Ratio | Lower | Upper |
|-----|-------|-------|-------|
| 41  | 100   |       |       |
| 39  | 21.3  | 55.8  | 83.6# |
| 76  | 0.0   | 24.3  | 36.5# |

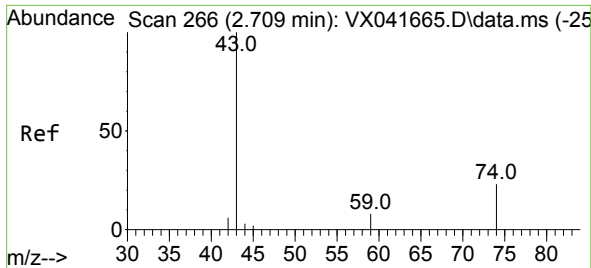


#16  
 Acetone  
 Concen: 100.405 ug/l  
 RT: 2.392 min Scan# 214  
 Delta R.T. -0.000 min  
 Lab File: VX041859.D  
 Acq: 13 Jun 2024 17:15

Tgt Ion: 43 Resp: 87383

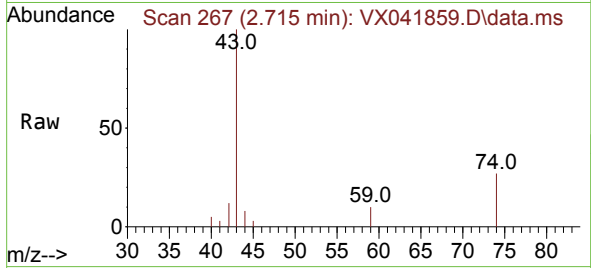
| Ion | Ratio | Lower | Upper |
|-----|-------|-------|-------|
| 43  | 100   |       |       |
| 58  | 32.5  | 21.9  | 32.9  |



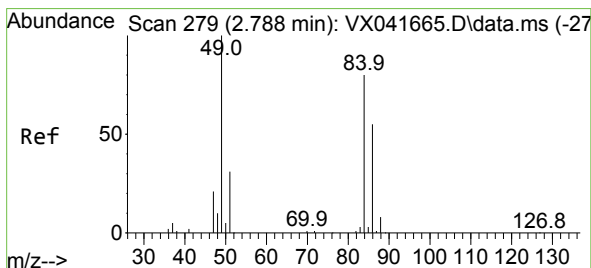
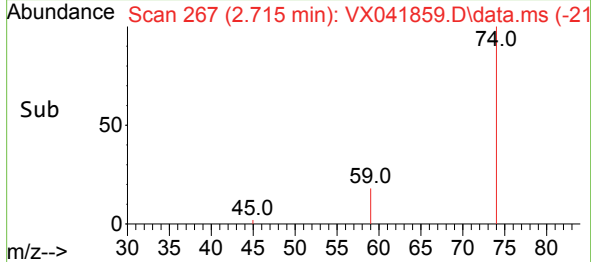
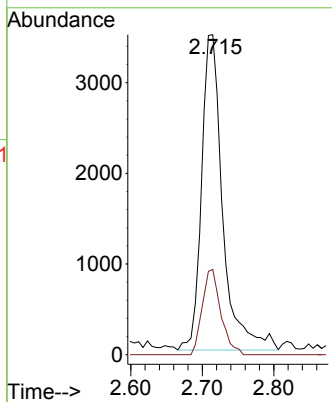


#18  
 Methyl Acetate  
 Concen: 3.846 ug/l  
 RT: 2.715 min Scan# 20  
 Delta R.T. 0.006 min  
 Lab File: VX041859.D  
 Acq: 13 Jun 2024 17:15

Instrument :  
 MSVOA\_X  
 ClientSampleId :

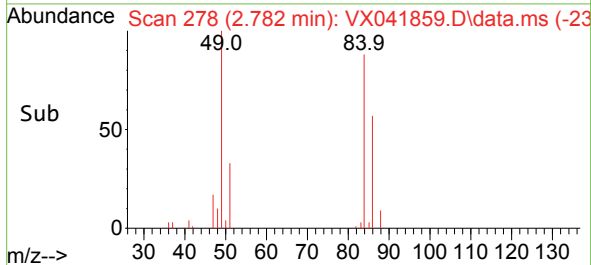
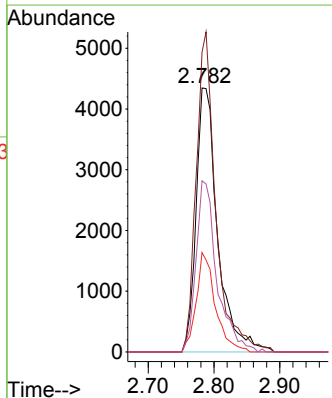
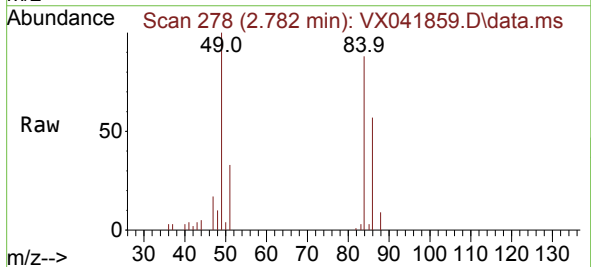


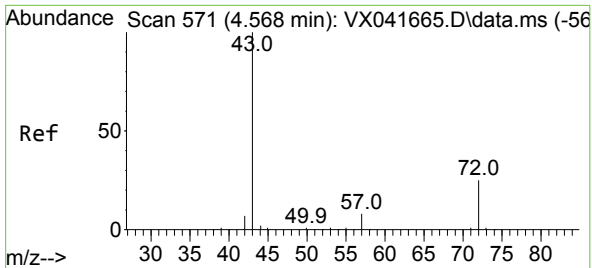
Tgt Ion: 43 Resp: 7163  
 Ion Ratio Lower Upper  
 43 100  
 74 23.6 17.8 26.8



#20  
 Methylene Chloride  
 Concen: 5.676 ug/l  
 RT: 2.782 min Scan# 278  
 Delta R.T. -0.006 min  
 Lab File: VX041859.D  
 Acq: 13 Jun 2024 17:15

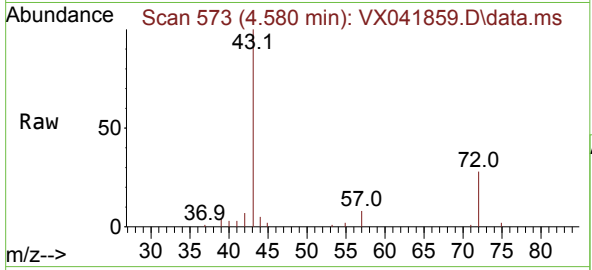
Tgt Ion: 84 Resp: 9907  
 Ion Ratio Lower Upper  
 84 100  
 49 113.5 103.6 155.4  
 51 37.6 33.8 50.6  
 86 64.8 49.4 74.0



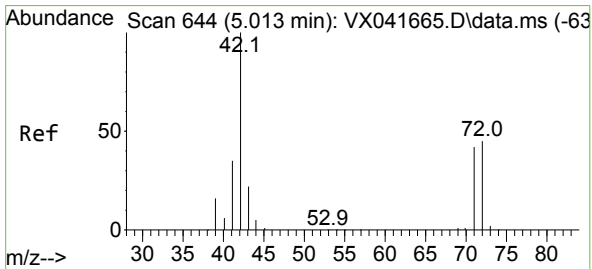
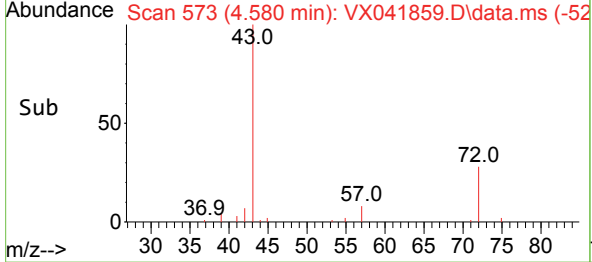
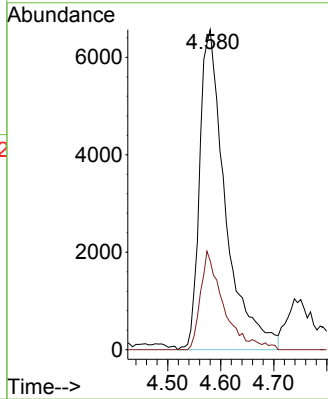


#25  
 2-Butanone  
 Concen: 18.305 ug/l  
 RT: 4.580 min Scan# 51  
 Delta R.T. 0.012 min  
 Lab File: VX041859.D  
 Acq: 13 Jun 2024 17:15

Instrument :  
 MSVOA\_X  
 ClientSampleId :

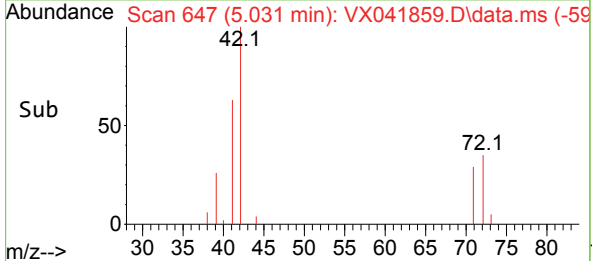
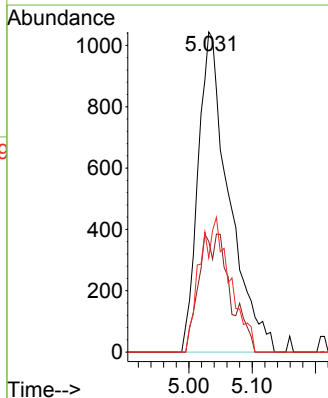
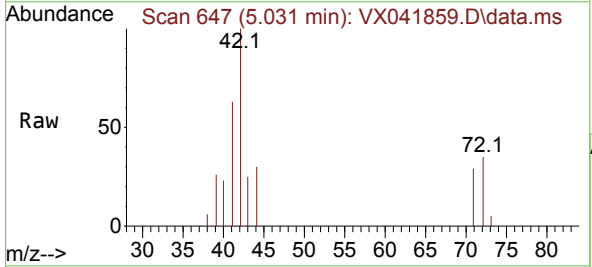


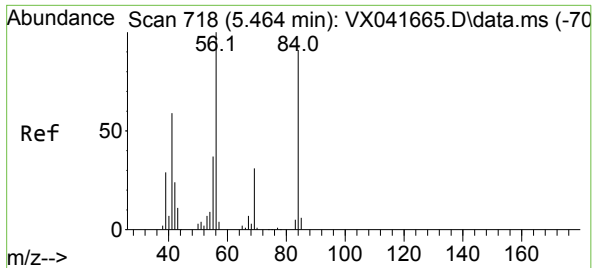
Tgt Ion: 43 Resp: 22190  
 Ion Ratio Lower Upper  
 43 100  
 72 27.8 19.4 29.2



#29  
 Tetrahydrofuran  
 Concen: 4.621 ug/l  
 RT: 5.031 min Scan# 647  
 Delta R.T. 0.018 min  
 Lab File: VX041859.D  
 Acq: 13 Jun 2024 17:15

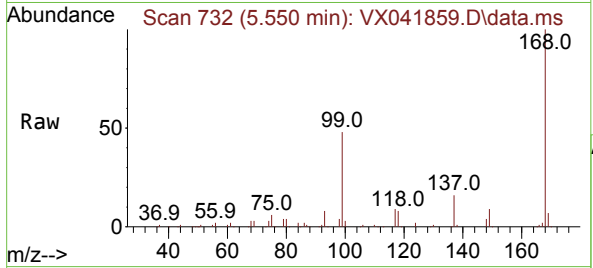
Tgt Ion: 42 Resp: 3533  
 Ion Ratio Lower Upper  
 42 100  
 72 17.9 34.2 51.4#  
 71 41.4 32.2 48.2



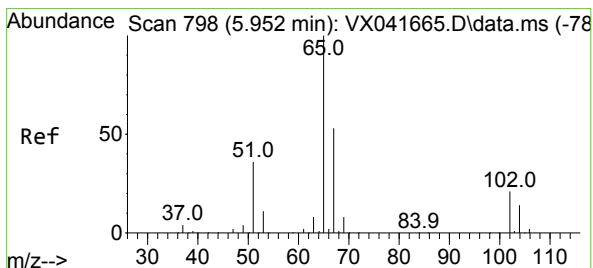
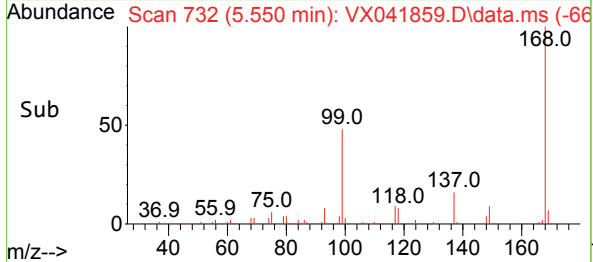
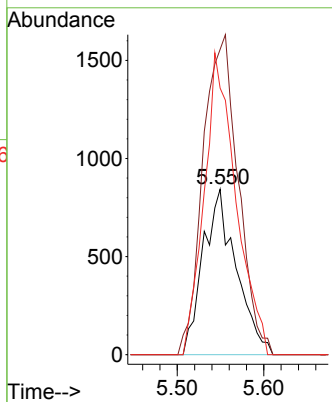


#31  
 Cyclohexane  
 Concen: 0.972 ug/l  
 RT: 5.550 min Scan# 718  
 Delta R.T. 0.085 min  
 Lab File: VX041859.D  
 Acq: 13 Jun 2024 17:15

Instrument : MSVOA\_X  
 ClientSampleId :

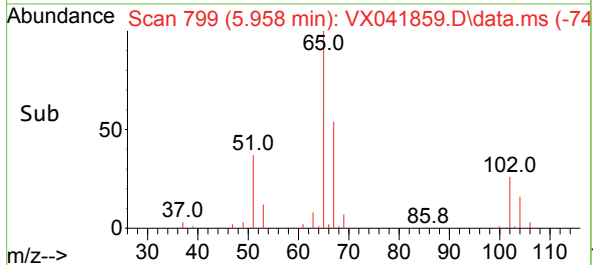
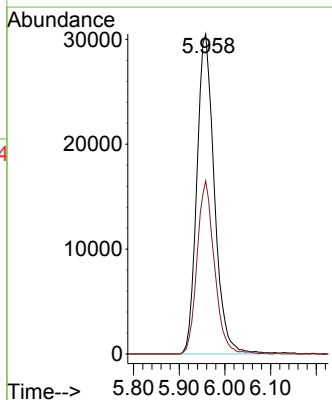
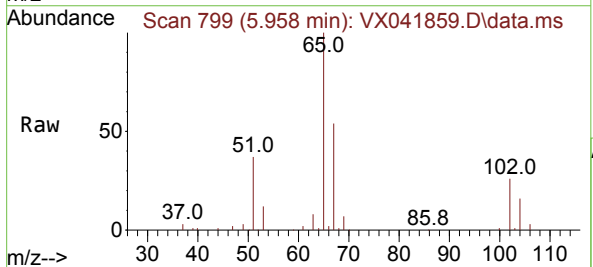


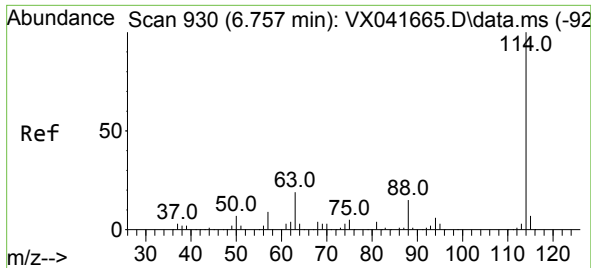
Tgt Ion: 56 Resp: 2239  
 Ion Ratio Lower Upper  
 56 100  
 69 184.6 23.4 35.2#  
 84 169.3 65.9 98.9#



#33  
 1,2-Dichloroethane-d4  
 Concen: 41.662 ug/l  
 RT: 5.958 min Scan# 799  
 Delta R.T. 0.006 min  
 Lab File: VX041859.D  
 Acq: 13 Jun 2024 17:15

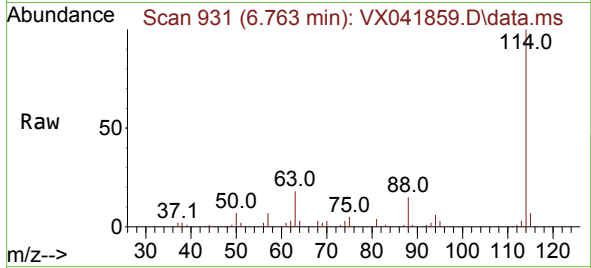
Tgt Ion: 65 Resp: 81259  
 Ion Ratio Lower Upper  
 65 100  
 67 53.6 0.0 100.2



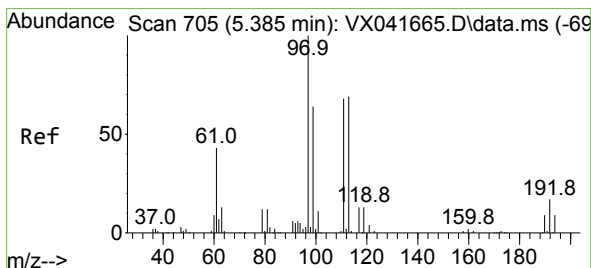
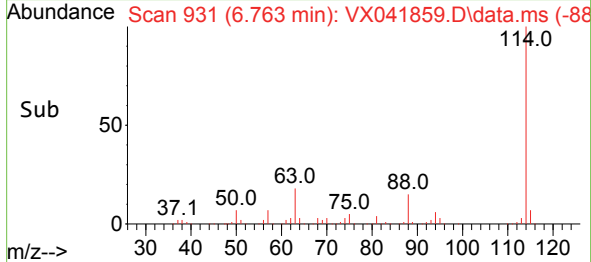
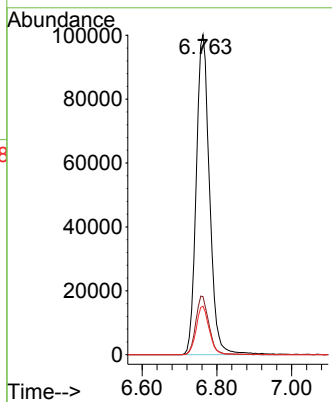


#34  
 1,4-Difluorobenzene  
 Concen: 50.000 ug/l  
 RT: 6.763 min Scan# 911  
 Delta R.T. 0.006 min  
 Lab File: VX041859.D  
 Acq: 13 Jun 2024 17:15

Instrument :  
 MSVOA\_X  
 ClientSampleId :

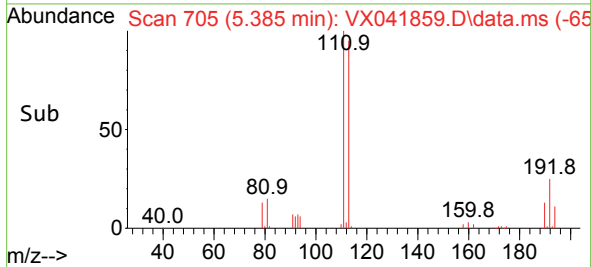
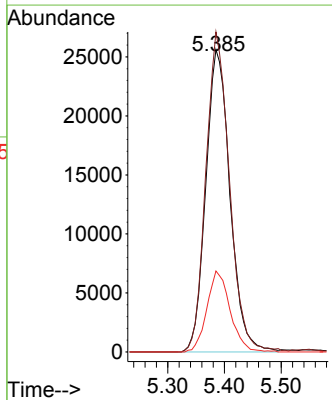
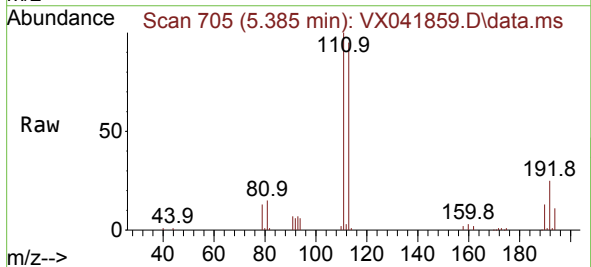


Tgt Ion:114 Resp: 247002  
 Ion Ratio Lower Upper  
 114 100  
 63 18.1 0.0 45.0  
 88 15.1 0.0 36.6

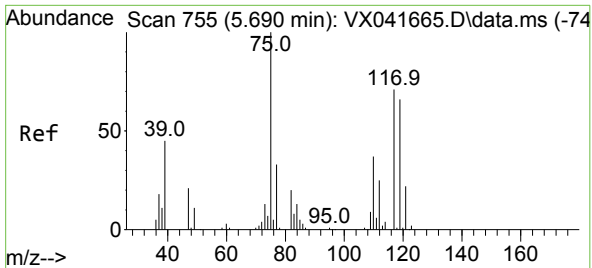


#35  
 Dibromofluoromethane  
 Concen: 44.404 ug/l  
 RT: 5.385 min Scan# 705  
 Delta R.T. -0.000 min  
 Lab File: VX041859.D  
 Acq: 13 Jun 2024 17:15

Tgt Ion:113 Resp: 75832  
 Ion Ratio Lower Upper  
 113 100  
 111 103.6 82.9 124.3  
 192 25.7 13.3 19.9#

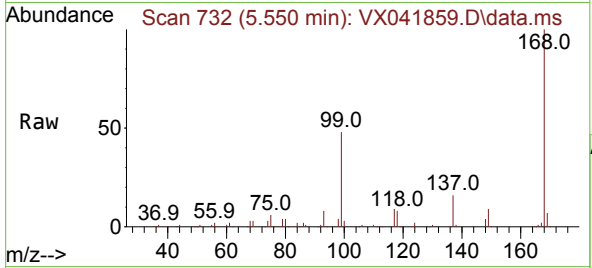






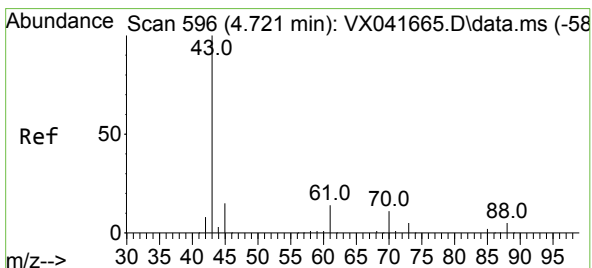
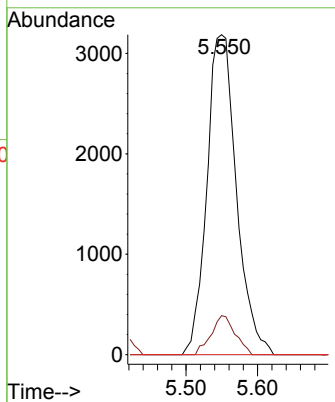
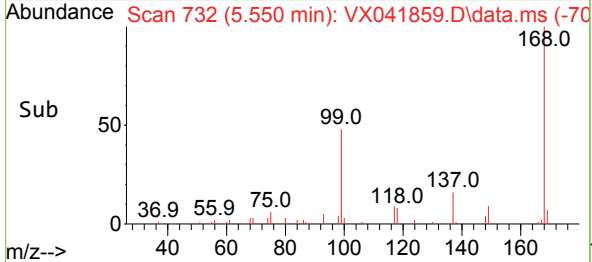
#36  
 1,1-Dichloropropene  
 Concen: 4.428 ug/l  
 RT: 5.550 min Scan# 71  
 Delta R.T. -0.140 min  
 Lab File: VX041859.D  
 Acq: 13 Jun 2024 17:15

Instrument :  
 MSVOA\_X  
 ClientSampleId :

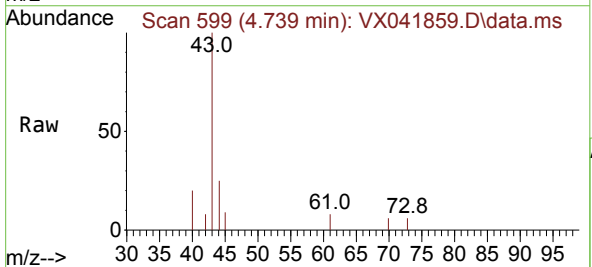


Tgt Ion: 75 Resp: 9157

| Ion | Ratio | Lower | Upper |
|-----|-------|-------|-------|
| 75  | 100   |       |       |
| 110 | 9.9   | 17.0  | 50.9# |
| 77  | 0.0   | 24.7  | 37.1# |

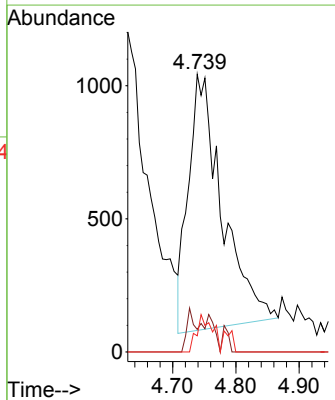
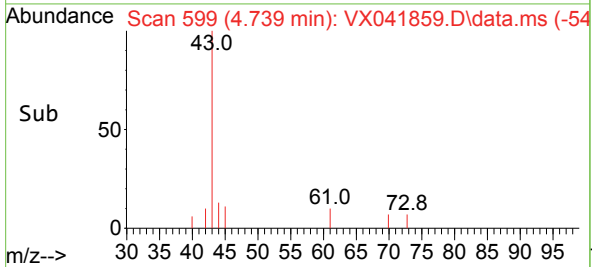


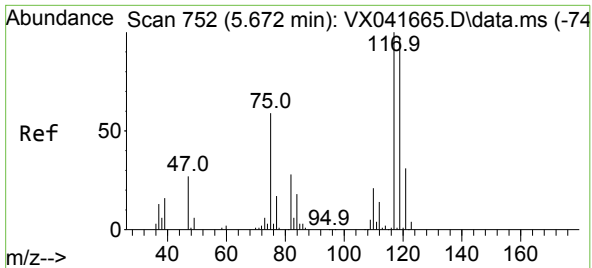
#37  
 Ethyl Acetate  
 Concen: 1.367 ug/l  
 RT: 4.739 min Scan# 599  
 Delta R.T. 0.018 min  
 Lab File: VX041859.D  
 Acq: 13 Jun 2024 17:15



Tgt Ion: 43 Resp: 3567

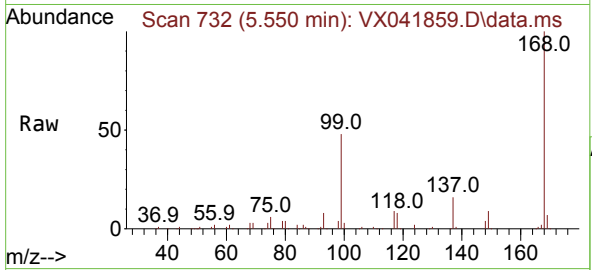
| Ion | Ratio | Lower | Upper |
|-----|-------|-------|-------|
| 43  | 100   |       |       |
| 61  | 3.3   | 10.6  | 16.0# |
| 70  | 6.7   | 8.3   | 12.5# |



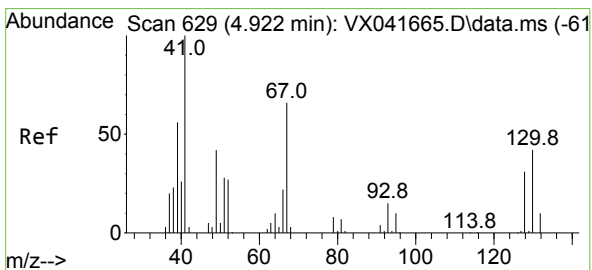
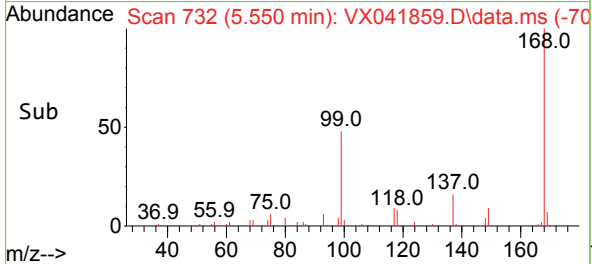
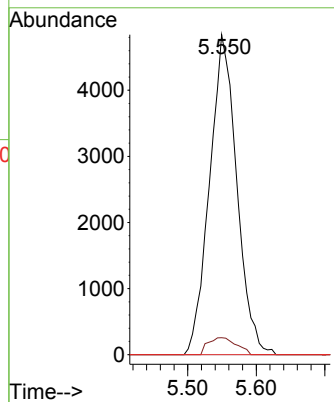


#38  
 Carbon Tetrachloride  
 Concen: 5.697 ug/l  
 RT: 5.550 min Scan# 711  
 Delta R.T. -0.122 min  
 Lab File: VX041859.D  
 Acq: 13 Jun 2024 17:15

Instrument :  
 MSVOA\_X  
 ClientSampleId :

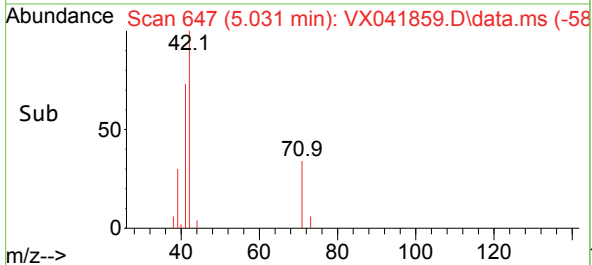
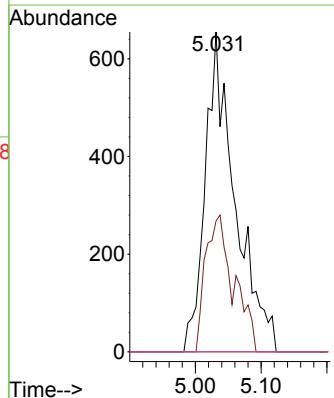
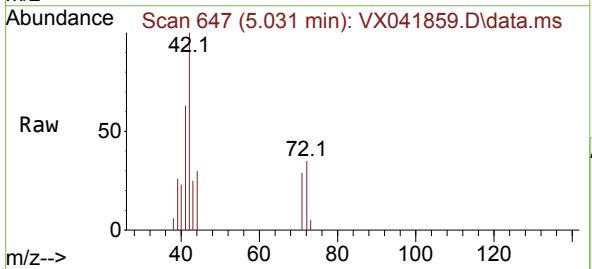


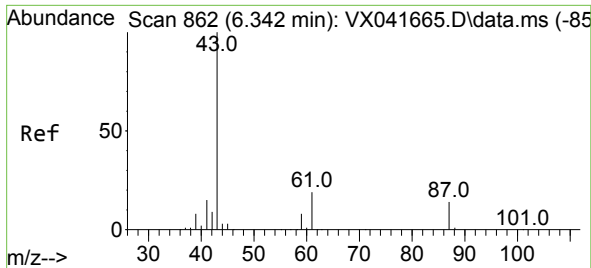
Tgt Ion: 117 Resp: 13385  
 Ion Ratio Lower Upper  
 117 100  
 119 5.3 78.2 117.2#  
 121 0.0 24.4 36.6#



#41  
 Methacrylonitrile  
 Concen: 1.619 ug/l  
 RT: 5.031 min Scan# 647  
 Delta R.T. 0.110 min  
 Lab File: VX041859.D  
 Acq: 13 Jun 2024 17:15

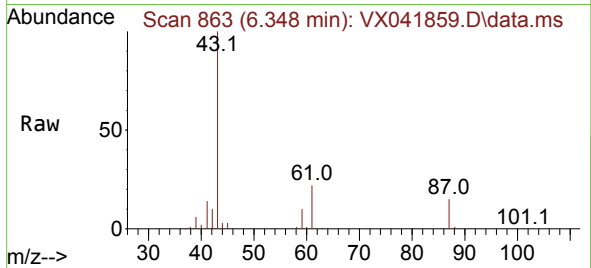
Tgt Ion: 41 Resp: 2066  
 Ion Ratio Lower Upper  
 41 100  
 39 31.0 45.2 67.8#  
 67 0.0 52.6 78.8#  
 52 0.0 22.7 34.1#



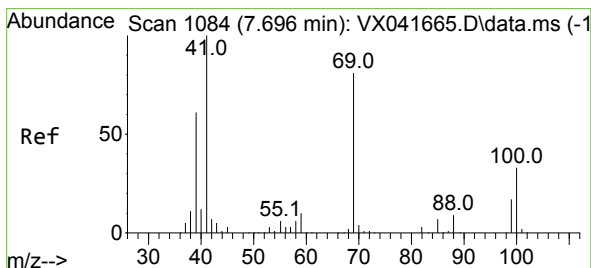
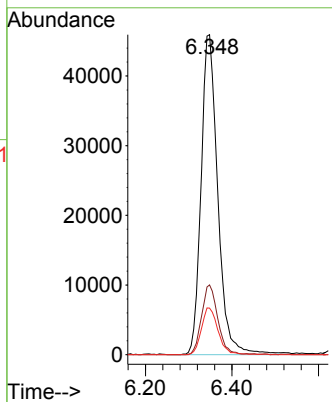
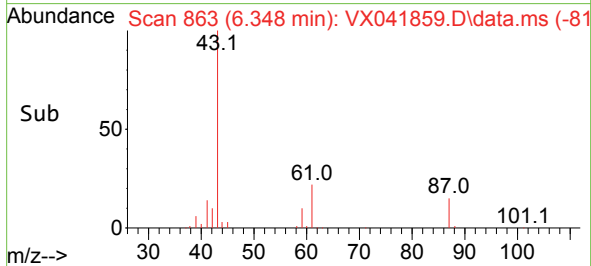


#43  
 Isopropyl Acetate  
 Concen: 31.205 ug/l  
 RT: 6.348 min Scan# 80  
 Delta R.T. 0.006 min  
 Lab File: VX041859.D  
 Acq: 13 Jun 2024 17:15

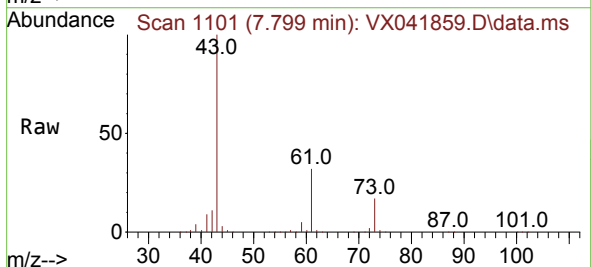
Instrument :  
 MSVOA\_X  
 ClientSampleId :



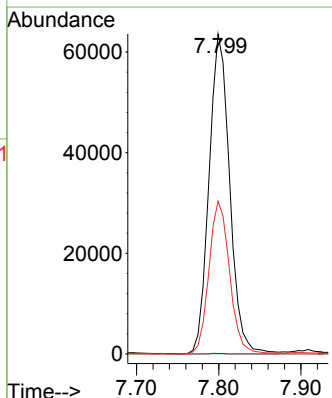
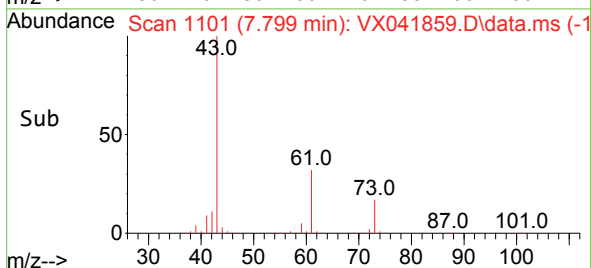
Tgt Ion: 43 Resp: 122947  
 Ion Ratio Lower Upper  
 43 100  
 61 21.1 15.2 22.8  
 87 14.6 9.8 14.6

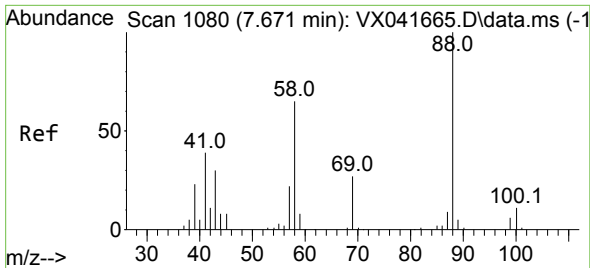


#48  
 Methyl methacrylate  
 Concen: 58.713 ug/l  
 RT: 7.799 min Scan# 1101  
 Delta R.T. 0.103 min  
 Lab File: VX041859.D  
 Acq: 13 Jun 2024 17:15



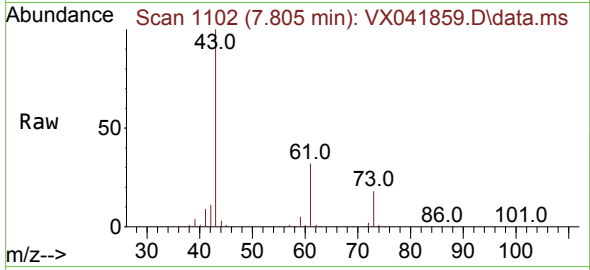
Tgt Ion: 41 Resp: 111092  
 Ion Ratio Lower Upper  
 41 100  
 69 0.1 59.2 88.8#  
 39 47.8 47.7 71.5



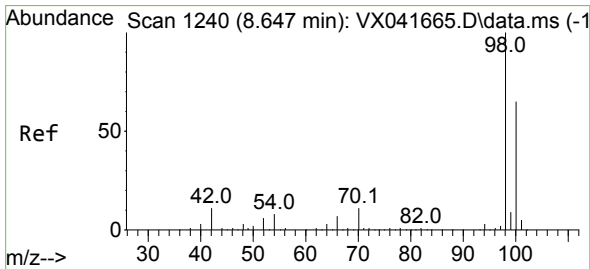
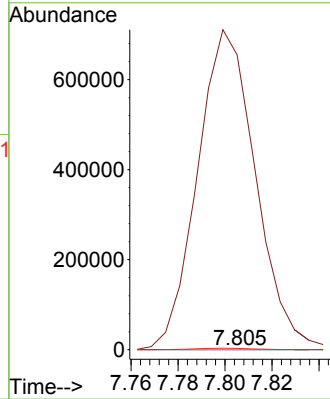
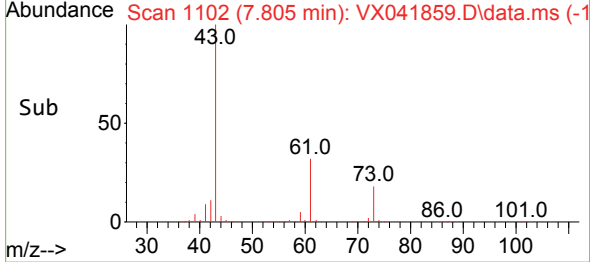


#49  
 1,4-Dioxane  
 Concen: 4.572 ug/l  
 RT: 7.805 min Scan# 1102  
 Delta R.T. 0.134 min  
 Lab File: VX041859.D  
 Acq: 13 Jun 2024 17:15

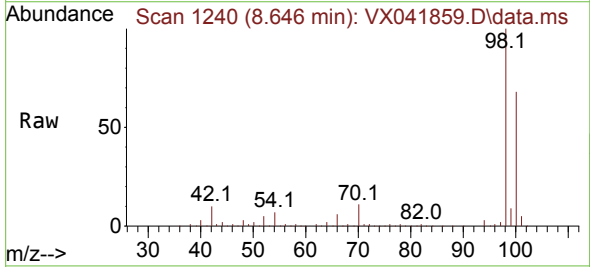
Instrument : MSVOA\_X  
 ClientSampleId :



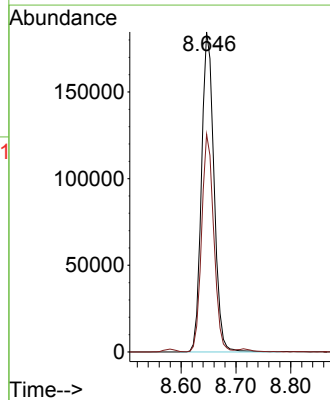
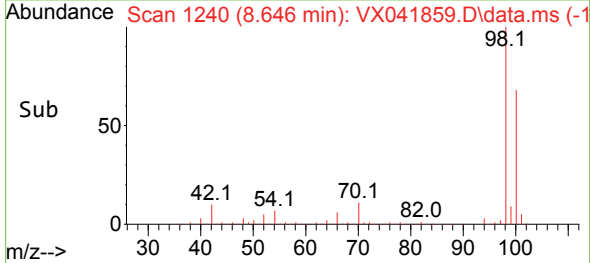
Tgt Ion: 88 Resp: 189  
 Ion Ratio Lower Upper  
 88 100  
 43 656943.9 0.0 0.0#  
 58 3019.0 60.1 90.1#

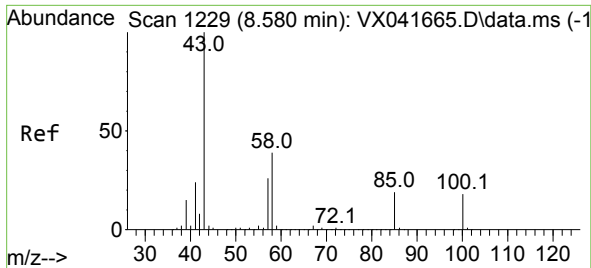


#50  
 Toluene-d8  
 Concen: 49.014 ug/l  
 RT: 8.646 min Scan# 1240  
 Delta R.T. -0.000 min  
 Lab File: VX041859.D  
 Acq: 13 Jun 2024 17:15



Tgt Ion: 98 Resp: 292474  
 Ion Ratio Lower Upper  
 98 100  
 100 66.1 53.1 79.7

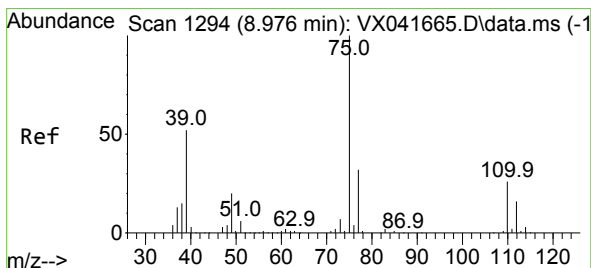
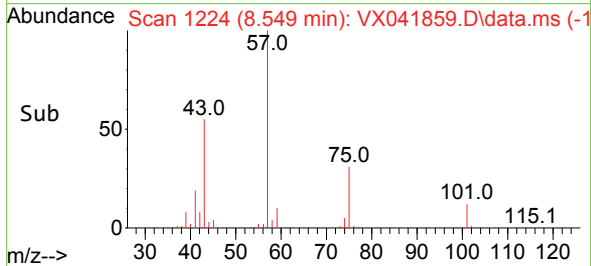
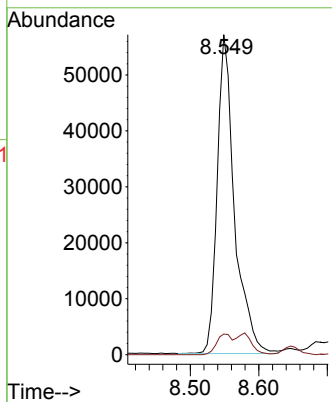
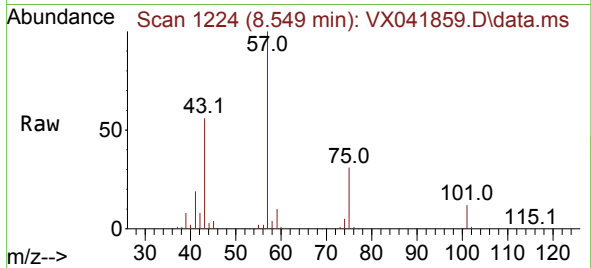




#51  
 4-Methyl-2-Pentanone  
 Concen: 39.017 ug/l  
 RT: 8.549 min Scan# 111  
 Delta R.T. -0.031 min  
 Lab File: VX041859.D  
 Acq: 13 Jun 2024 17:15

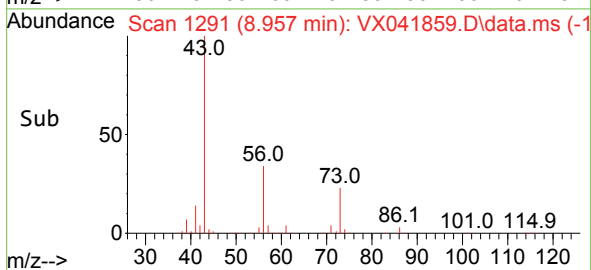
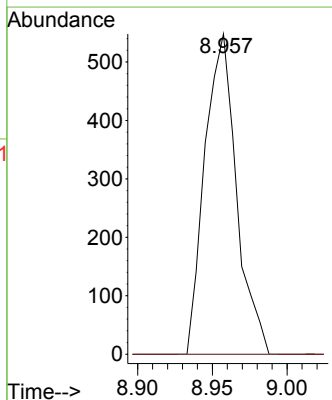
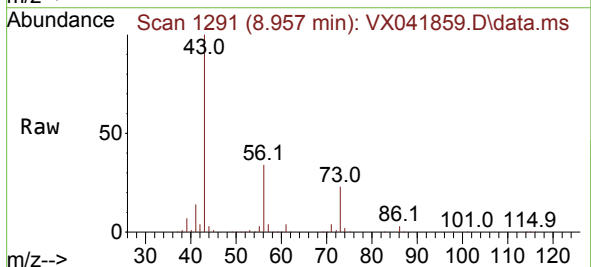
Instrument : MSVOA\_X  
 ClientSampleId :

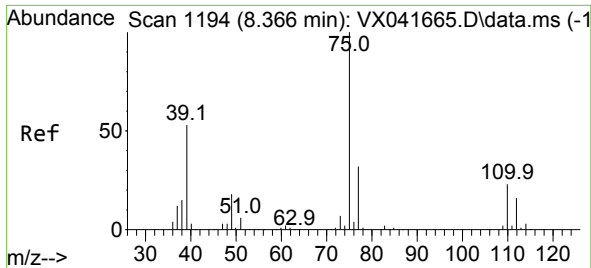
Tgt Ion: 43 Resp: 99685  
 Ion Ratio Lower Upper  
 43 100  
 58 5.7 30.4 45.6#



#53  
 t-1,3-Dichloropropene  
 Concen: 0.376 ug/l  
 RT: 8.957 min Scan# 1291  
 Delta R.T. -0.018 min  
 Lab File: VX041859.D  
 Acq: 13 Jun 2024 17:15

Tgt Ion: 75 Resp: 808  
 Ion Ratio Lower Upper  
 75 100  
 77 0.0 25.7 38.5#

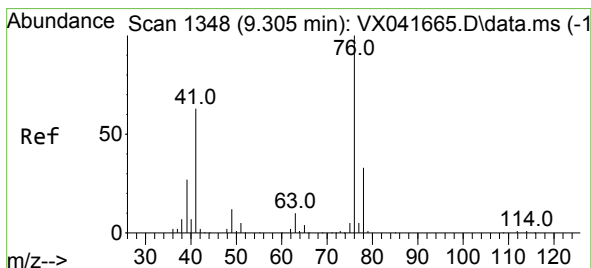
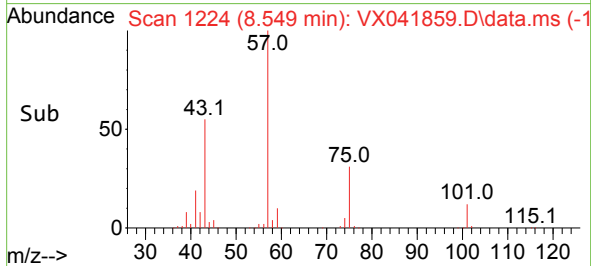
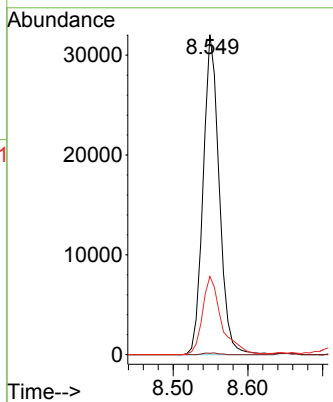
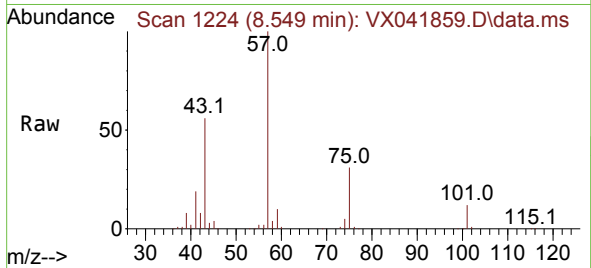




#54  
 cis-1,3-Dichloropropene  
 Concen: 20.175 ug/l  
 RT: 8.549 min Scan# 1194  
 Delta R.T. 0.183 min  
 Lab File: VX041859.D  
 Acq: 13 Jun 2024 17:15

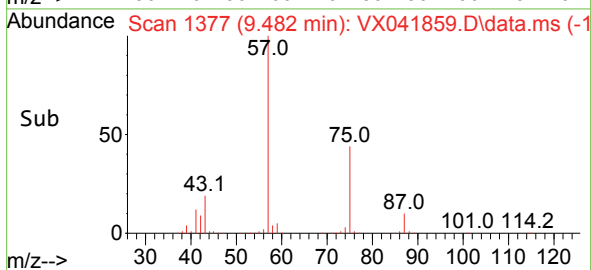
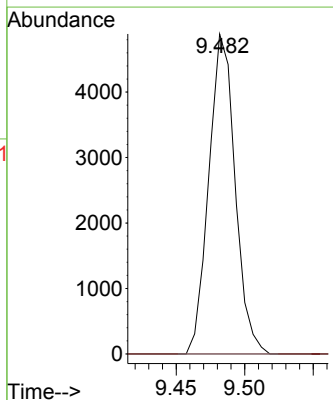
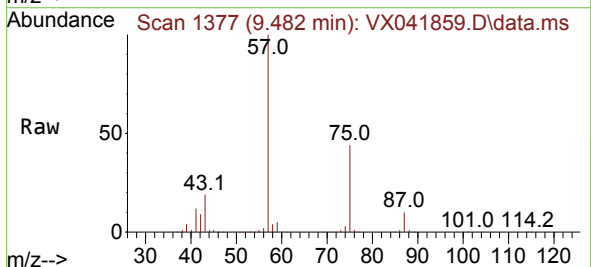
Instrument : MSVOA\_X  
 ClientSampleId :

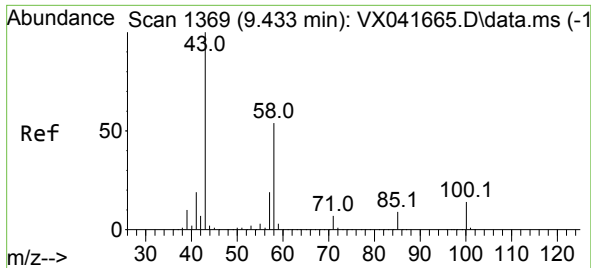
| Tgt Ion | Resp  | Lower | Upper |
|---------|-------|-------|-------|
| 75      | 47947 |       |       |
| 75      | 100   |       |       |
| 77      | 0.5   | 25.3  | 37.9# |
| 39      | 24.4  | 46.7  | 70.1# |



#57  
 1,3-Dichloropropane  
 Concen: 2.372 ug/l  
 RT: 9.482 min Scan# 1377  
 Delta R.T. 0.177 min  
 Lab File: VX041859.D  
 Acq: 13 Jun 2024 17:15

| Tgt Ion | Resp | Lower | Upper |
|---------|------|-------|-------|
| 76      | 6512 |       |       |
| 76      | 100  |       |       |
| 78      | 0.0  | 26.1  | 39.1# |

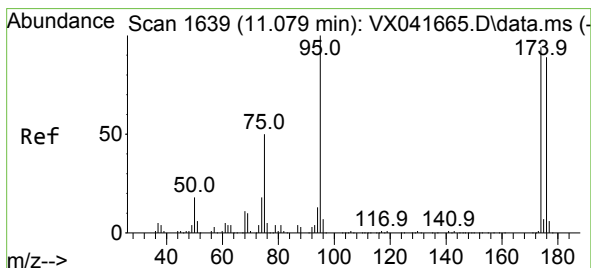
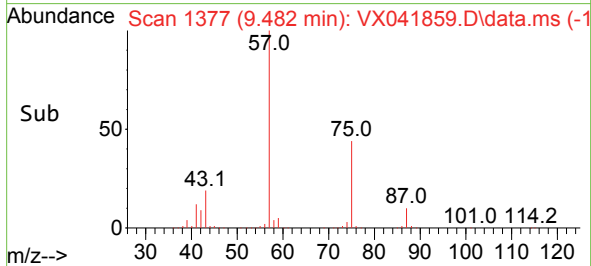
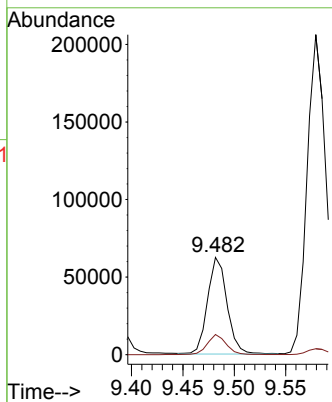
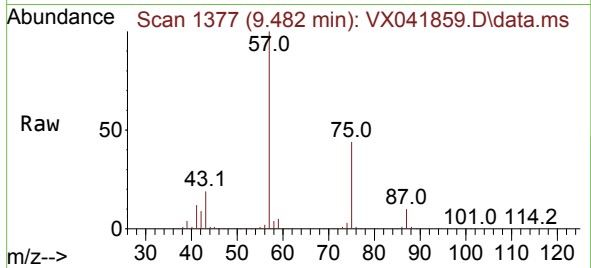




#59  
 2-Hexanone  
 Concen: 42.395 ug/l  
 RT: 9.482 min Scan# 11  
 Delta R.T. 0.049 min  
 Lab File: VX041859.D  
 Acq: 13 Jun 2024 17:15

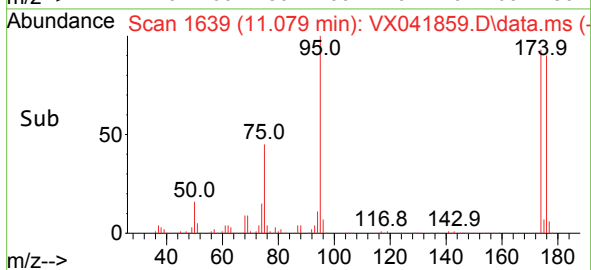
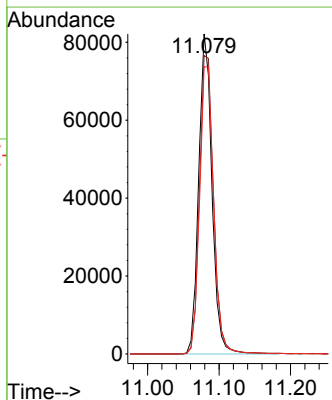
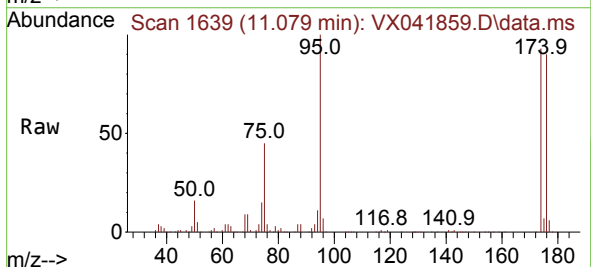
Instrument :  
 MSVOA\_X  
 ClientSampleId :

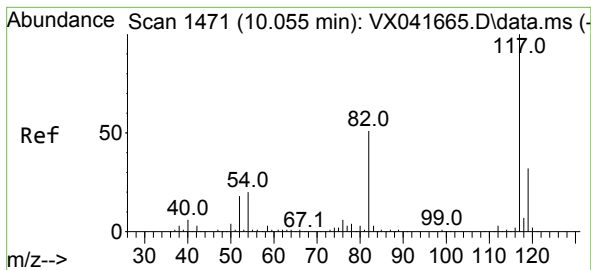
Tgt Ion: 43 Resp: 82580  
 Ion Ratio Lower Upper  
 43 100  
 58 20.7 26.2 78.5#



#62  
 4-Bromofluorobenzene  
 Concen: 48.123 ug/l  
 RT: 11.079 min Scan# 1639  
 Delta R.T. -0.000 min  
 Lab File: VX041859.D  
 Acq: 13 Jun 2024 17:15

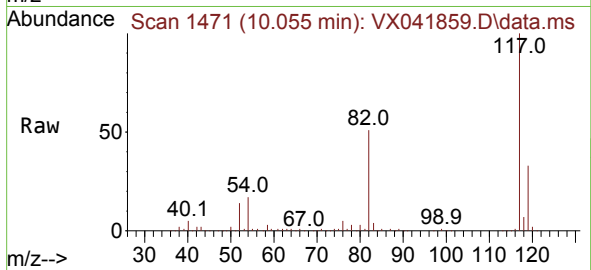
Tgt Ion: 95 Resp: 105983  
 Ion Ratio Lower Upper  
 95 100  
 174 99.2 0.0 135.6  
 176 95.3 0.0 131.0



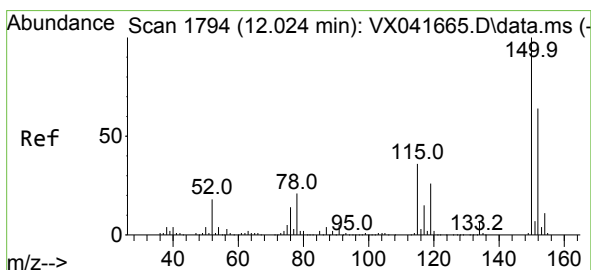
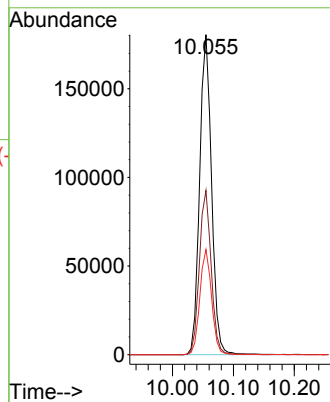
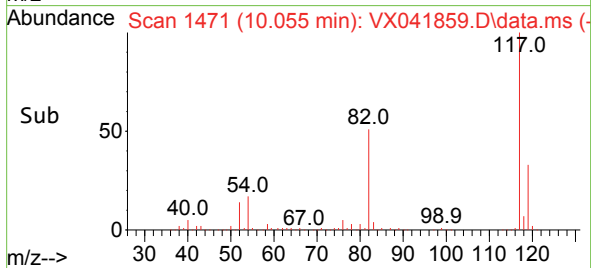


#63  
 Chlorobenzene-d5  
 Concen: 50.000 ug/l  
 RT: 10.055 min Scan# 1471  
 Delta R.T. -0.000 min  
 Lab File: VX041859.D  
 Acq: 13 Jun 2024 17:15

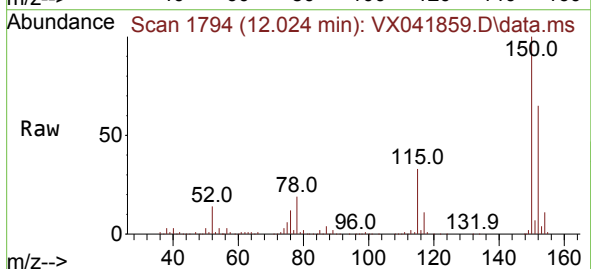
Instrument : MSVOA\_X  
 ClientSampleId :



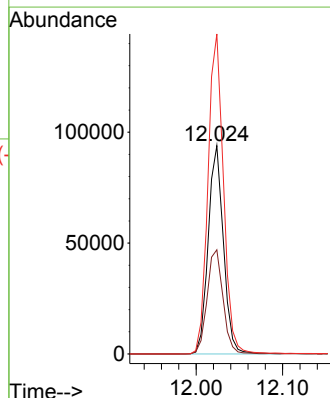
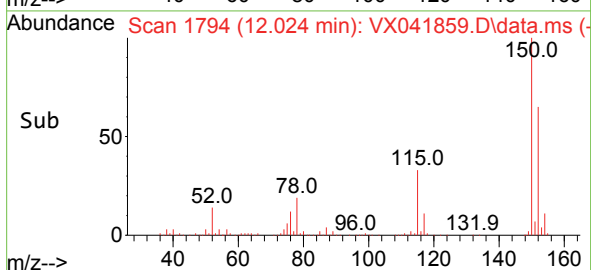
Tgt Ion:117 Resp: 244420  
 Ion Ratio Lower Upper  
 117 100  
 82 51.3 46.2 69.4  
 119 32.9 25.5 38.3



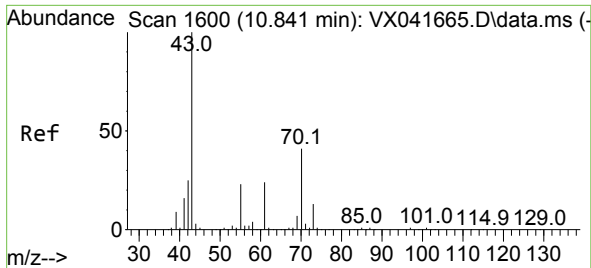
#72  
 1,4-Dichlorobenzene-d4  
 Concen: 50.000 ug/l  
 RT: 12.024 min Scan# 1794  
 Delta R.T. -0.000 min  
 Lab File: VX041859.D  
 Acq: 13 Jun 2024 17:15



Tgt Ion:152 Resp: 114985  
 Ion Ratio Lower Upper  
 152 100  
 115 52.4 43.3 129.9  
 150 156.3 0.0 345.0

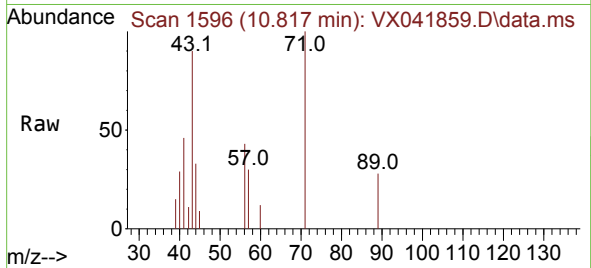






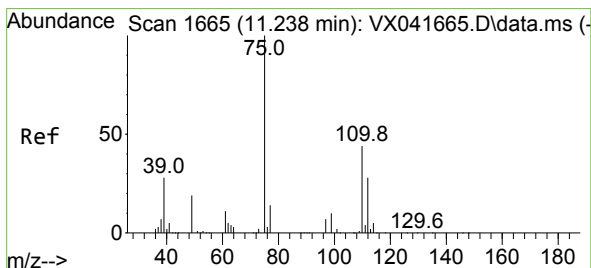
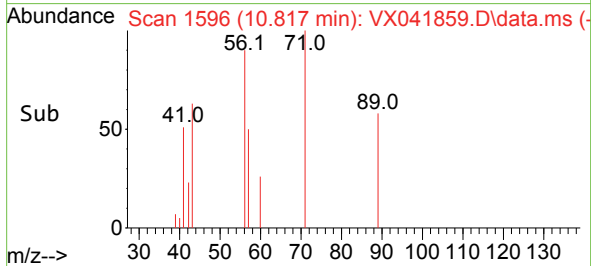
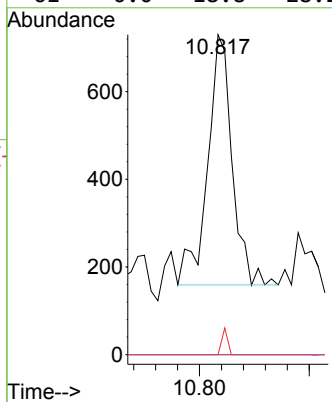
#74  
 N-amy1 acetate  
 Concen: 0.281 ug/l  
 RT: 10.817 min Scan# 1639  
 Delta R.T. -0.025 min  
 Lab File: VX041859.D  
 Acq: 13 Jun 2024 17:15

Instrument : MSVOA\_X  
 ClientSampleId :



Tgt Ion: 43 Resp: 888

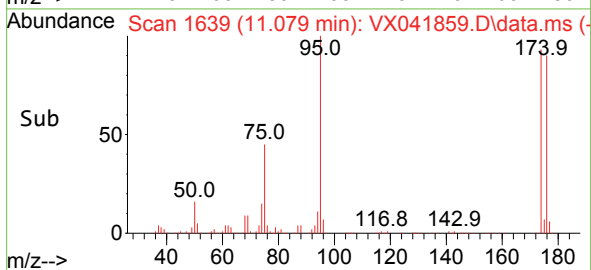
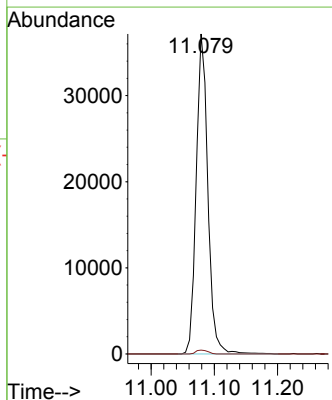
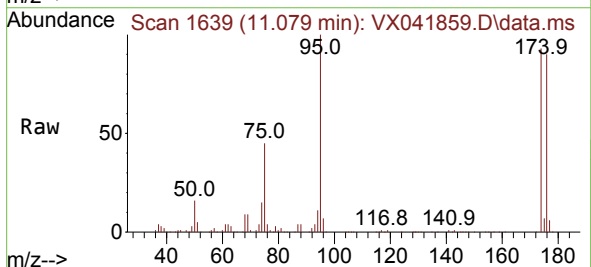
| Ion | Ratio | Lower | Upper |
|-----|-------|-------|-------|
| 43  | 100   |       |       |
| 70  | 0.0   | 32.9  | 49.3# |
| 55  | 0.0   | 19.3  | 28.9# |
| 61  | 0.0   | 18.8  | 28.2# |

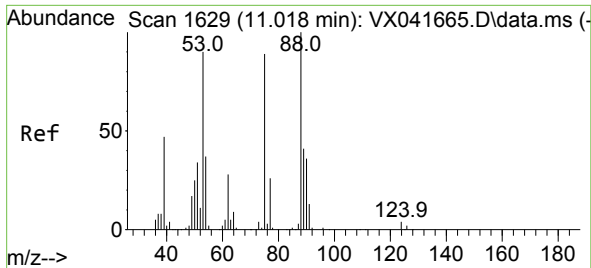


#76  
 1,2,3-Trichloropropane  
 Concen: 23.778 ug/l  
 RT: 11.079 min Scan# 1639  
 Delta R.T. -0.159 min  
 Lab File: VX041859.D  
 Acq: 13 Jun 2024 17:15

Tgt Ion: 75 Resp: 47704

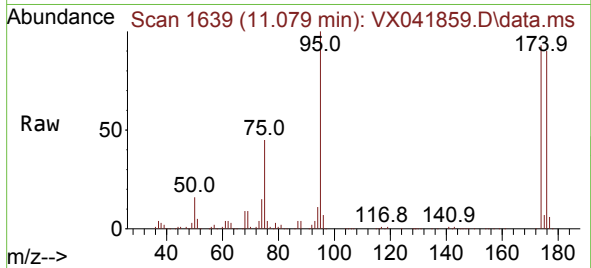
| Ion | Ratio | Lower | Upper |
|-----|-------|-------|-------|
| 75  | 100   |       |       |
| 77  | 1.2   | 19.1  | 57.5# |





#81  
 trans-1,4-Dichloro-2-butene  
 Concen: 64.806 ug/l  
 RT: 11.079 min Scan# 1  
 Delta R.T. 0.061 min  
 Lab File: VX041859.D  
 Acq: 13 Jun 2024 17:15

Instrument :  
 MSVOA\_X  
 ClientSampleId :



Tgt Ion: 75 Resp: 47704  
 Ion Ratio Lower Upper  
 75 100  
 53 0.0 90.5 135.7#  
 89 0.0 36.9 55.3#

