

Data Path : Z:\voasrv\HPCHEM1\MSVOA\_X\Data\VX061421\  
 Data File : VX022691.D  
 Acq On : 14 Jun 2021 13:53  
 Operator : JC/MD  
 Sample : M2688-03DL 40X  
 Misc : 5.0mL/MSVOA\_X/WATER  
 ALS Vial : 10 Sample Multiplier: 1

Instrument :  
 MSVOA\_X  
 ClientSampled :

Quant Time: Jun 15 06:11:31 2021  
 Quant Method : Z:\voasrv\HPCHEM1\MSVOA\_X\Method\82X061021W.M  
 Quant Title : SW846 8260  
 QLast Update : Thu Jun 10 12:20:00 2021  
 Response via : Initial Calibration

Compound	R.T.	QIon	Response	Conc	Units	Dev(Min)
Internal Standards						
1) Pentafluorobenzene	5.562	168	67985	50.00	ug/l	# 0.00
34) 1,4-Difluorobenzene	6.769	114	133337	50.00	ug/l	0.00
63) Chlorobenzene-d5	10.055	117	119884	50.00	ug/l	0.00
72) 1,4-Dichlorobenzene-d4	12.024	152	48614	50.00	ug/l	0.00
System Monitoring Compounds						
33) 1,2-Dichloroethane-d4	5.964	65	56299	46.05	ug/l	0.00
Spiked Amount	50.000	Range	78 - 117	Recovery	=	92.10%
35) Dibromofluoromethane	5.403	113	40638	47.77	ug/l	0.01
Spiked Amount	50.000	Range	75 - 124	Recovery	=	95.54%
50) Toluene-d8	8.653	98	164988	49.20	ug/l	0.00
Spiked Amount	50.000	Range	92 - 112	Recovery	=	98.40%
62) 4-Bromofluorobenzene	11.085	95	59077	46.58	ug/l	0.00
Spiked Amount	50.000	Range	83 - 123	Recovery	=	93.16%
Target Compounds						
5) Bromomethane	1.605	94	189	0.37	ug/l	# 44
13) Acrolein	2.221	56	343	2.89	ug/l	# 1
14) Allyl chloride	2.745	41	973	0.61	ug/l	# 1
15) Acrylonitrile	3.086	53	153	0.28	ug/l	# 34
16) Acetone	2.385	43	931	1.70	ug/l	# 82
18) Methyl Acetate	2.708	43	416	0.25	ug/l	# 47
25) 2-Butanone	4.580	43	370	0.42	ug/l	# 45
31) Cyclohexane	5.476	56	10862	7.36	ug/l	# 81
36) 1,1-Dichloropropene	5.562	75	7087	5.33	ug/l	# 47
38) Carbon Tetrachloride	5.568	117	7621	6.71	ug/l	# 17
39) Methylcyclohexane	7.385	83	3295	2.38	ug/l	86
40) Benzene	6.049	78	68903	17.43	ug/l	98
42) 1,2-Dichloroethane	6.043	62	693	0.48	ug/l	# 73
43) Isopropyl Acetate	6.263	43	1385	0.52	ug/l	# 57
52) Toluene	8.726	92	171568	69.74	ug/l	99
53) t-1,3-Dichloropropene	8.720	75	1973	4.37	ug/l	# 1
56) Ethyl methacrylate	8.842	69	136	2.36	ug/l	# 1
67) Ethyl Benzene	10.195	91	51336	11.16	ug/l	99
68) m/p-Xylenes	10.305	106	66931	40.17	ug/l	93
69) o-Xylene	10.646	106	26545	16.44	ug/l	99
70) Styrene	10.646	104	1340	1.89	ug/l	# 1
73) Isopropylbenzene	10.963	105	7289	1.83	ug/l	97
76) 1,2,3-Trichloropropane	11.085	75	32264	25.03	ug/l	# 38
78) n-propylbenzene	11.305	91	17438	3.62	ug/l	100
79) 2-Chlorotoluene	11.396	91	5166	1.77	ug/l	# 41
80) 1,3,5-Trimethylbenzene	11.451	105	20237	6.09	ug/l	98
81) trans-1,4-Dichloro-2-b...	11.085	75	32264	63.02	ug/l	# 12
82) 4-Chlorotoluene	11.457	91	2471	0.74	ug/l	# 45
83) tert-Butylbenzene	11.756	119	11037	3.53	ug/l	# 42
84) 1,2,4-Trimethylbenzene	11.756	105	100597	29.83	ug/l	97
85) sec-Butylbenzene	11.756	105	100597	24.66	ug/l	# 57
86) p-Isopropyltoluene	12.012	119	687	0.20	ug/l	# 56
89) n-Butylbenzene	12.335	91	2201	0.68	ug/l	# 33
90) Hexachloroethane	12.536	117	458	4.43	ug/l	# 9
95) Naphthalene	13.780	128	13003	4.53	ug/l	98

Data Path : Z:\voasrv\HPCHEM1\MSVOA\_X\Data\VX061421\  
Data File : VX022691.D  
Acq On : 14 Jun 2021 13:53  
Operator : JC/MD  
Sample : M2688-03DL 40X  
Misc : 5.0mL/MSVOA\_X/WATER  
ALS Vial : 10 Sample Multiplier: 1

Instrument :  
MSVOA\_X  
ClientSampled :

Quant Time: Jun 15 06:11:31 2021  
Quant Method : Z:\voasrv\HPCHEM1\MSVOA\_X\Method\82X061021W.M  
Quant Title : SW846 8260  
QLast Update : Thu Jun 10 12:20:00 2021  
Response via : Initial Calibration

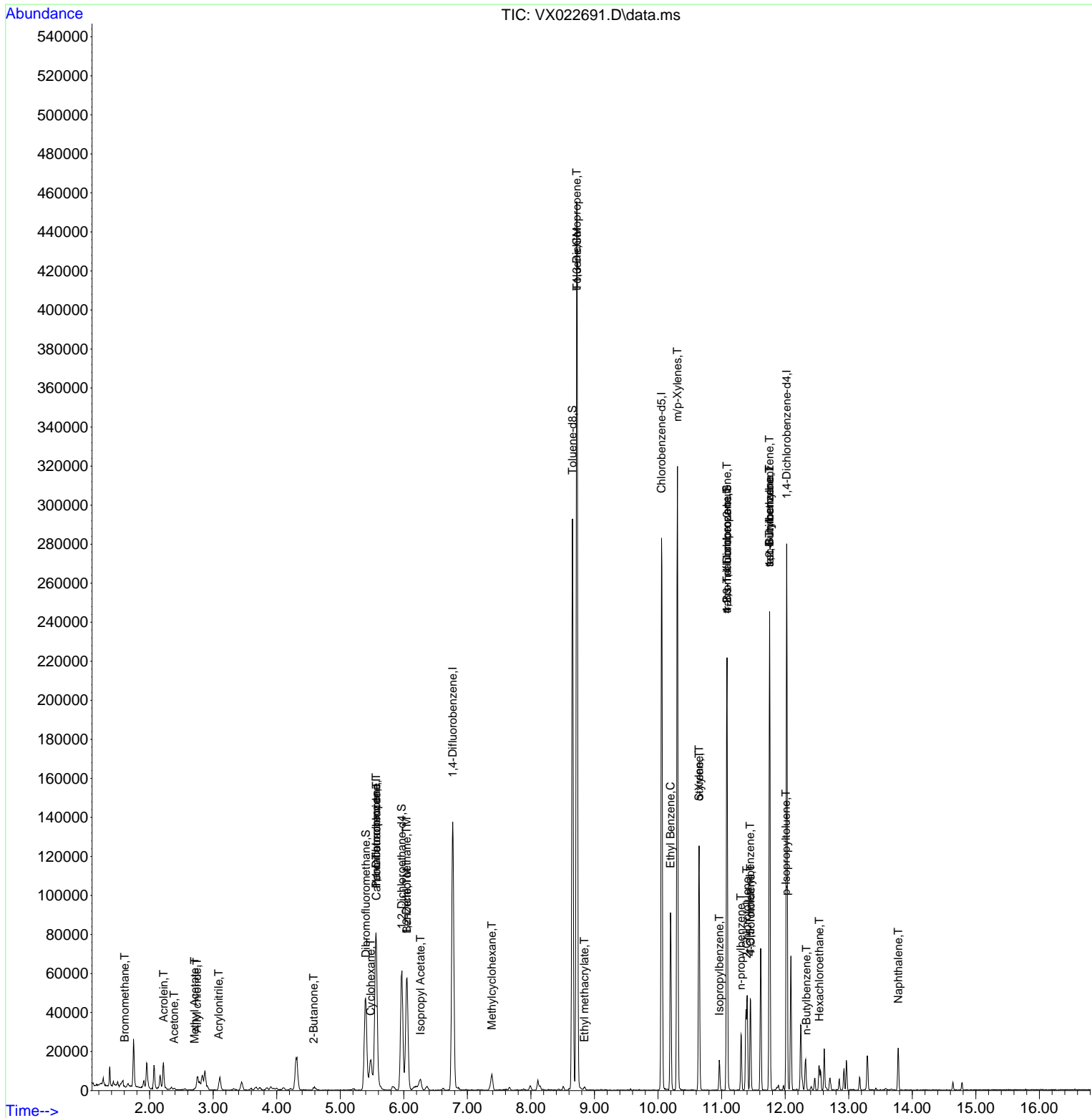
Compound	R.T.	QIon	Response	Conc	Units	Dev(Min)
----------	------	------	----------	------	-------	----------

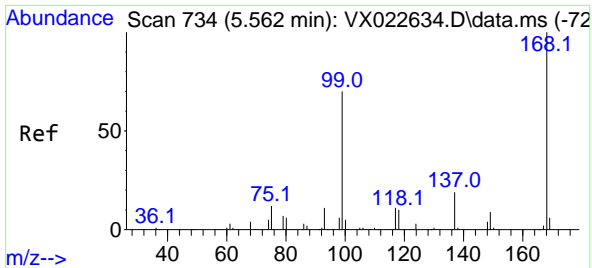
-----  
(#) = qualifier out of range (m) = manual integration (+) = signals summed

Data Path : Z:\voasrv\HPCHEM1\MSVOA\_X\Data\VX061421\  
 Data File : VX022691.D  
 Acq On : 14 Jun 2021 13:53  
 Operator : JC/MD  
 Sample : M2688-03DL 40X  
 Misc : 5.0mL/MSVOA\_X/WATER  
 ALS Vial : 10 Sample Multiplier: 1

Instrument :  
 MSVOA\_X  
 Client Sampled :

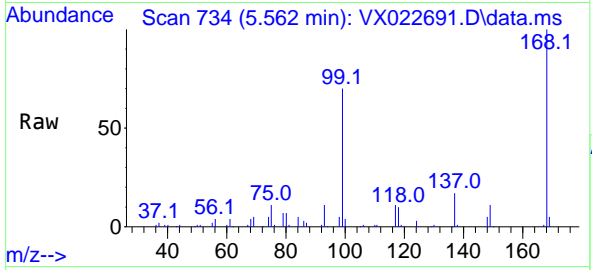
Quant Time: Jun 15 06:11:31 2021  
 Quant Method : Z:\voasrv\HPCHEM1\MSVOA\_X\Method\82X061021W.M  
 Quant Title : SW846 8260  
 QLast Update : Thu Jun 10 12:20:00 2021  
 Response via : Initial Calibration



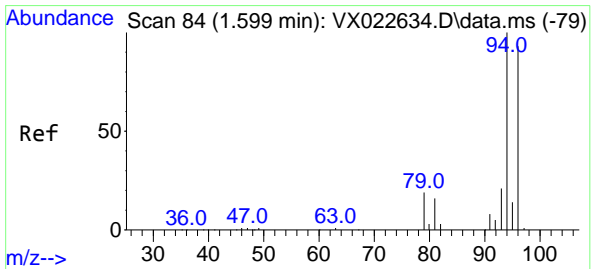
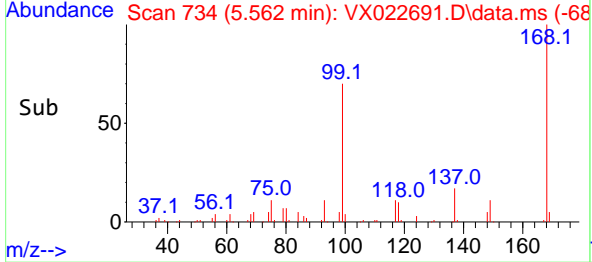
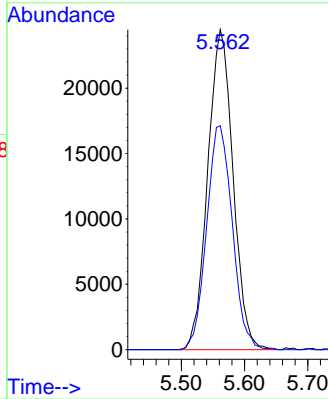


#1  
 Pentafluorobenzene  
 Concen: 50.00 ug/l  
 RT: 5.562 min Scan# 734  
 Delta R.T. -0.000 min  
 Lab File: VX022691.D  
 Acq: 14 Jun 2021 13:53

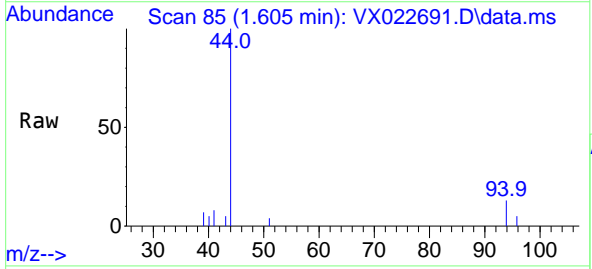
Instrument :  
 MSVOA\_X  
 ClientSampled :



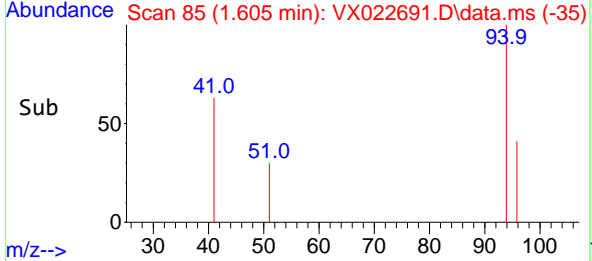
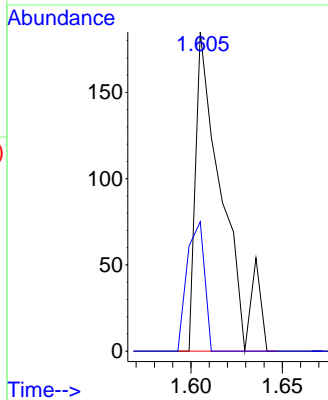
Tgt Ion:168 Resp: 67985  
 Ion Ratio Lower Upper  
 168 100  
 99 70.0 45.8 68.6#

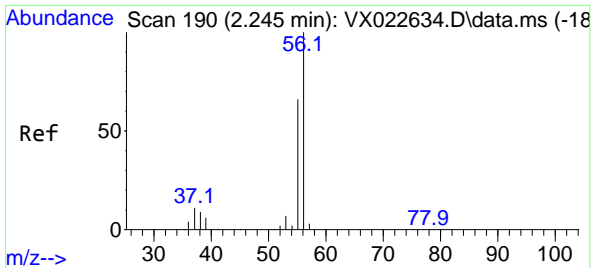


#5  
 Bromomethane  
 Concen: 0.37 ug/l  
 RT: 1.605 min Scan# 85  
 Delta R.T. 0.006 min  
 Lab File: VX022691.D  
 Acq: 14 Jun 2021 13:53



Tgt Ion: 94 Resp: 189  
 Ion Ratio Lower Upper  
 94 100  
 96 40.5 76.4 114.6#

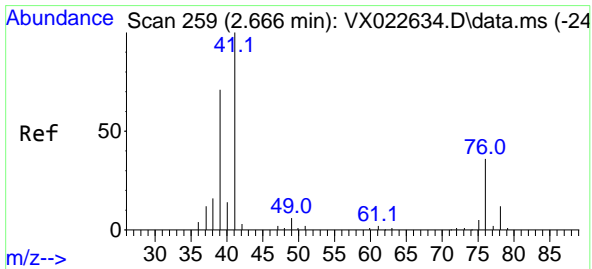
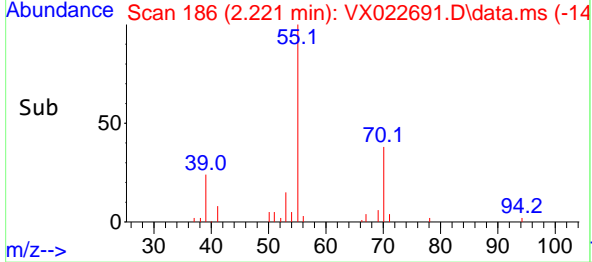
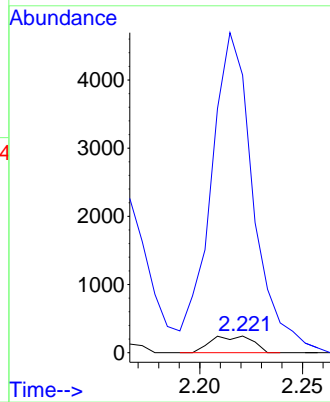
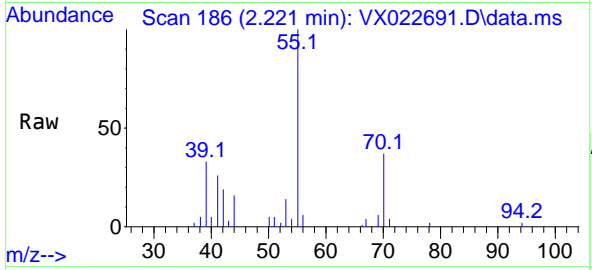




#13  
 Acrolein  
 Concen: 2.89 ug/l  
 RT: 2.221 min Scan# 186  
 Delta R.T. -0.018 min  
 Lab File: VX022691.D  
 Acq: 14 Jun 2021 13:53

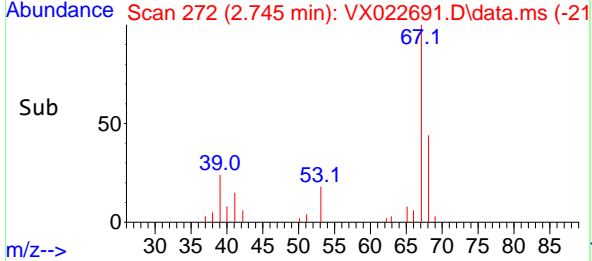
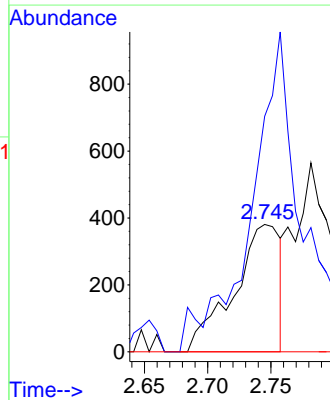
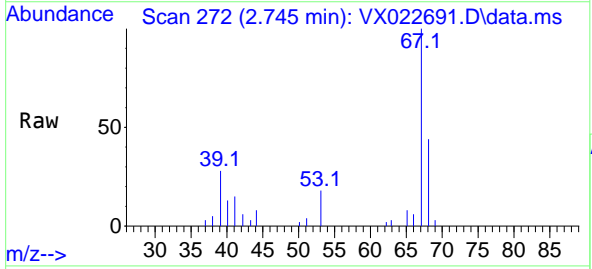
Instrument :  
 MSVOA\_X  
 ClientSampled :

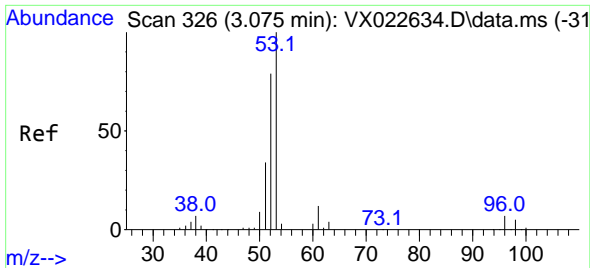
Tgt Ion: 56 Resp: 343  
 Ion Ratio Lower Upper  
 56 100  
 55 1971.4 56.4 84.6#



#14  
 Allyl chloride  
 Concen: 0.61 ug/l  
 RT: 2.745 min Scan# 272  
 Delta R.T. 0.079 min  
 Lab File: VX022691.D  
 Acq: 14 Jun 2021 13:53

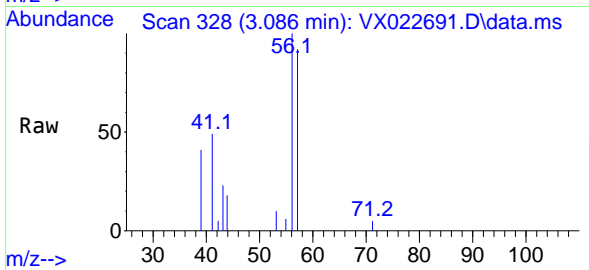
Tgt Ion: 41 Resp: 973  
 Ion Ratio Lower Upper  
 41 100  
 39 263.4 51.6 77.4#  
 76 0.0 30.5 45.7#



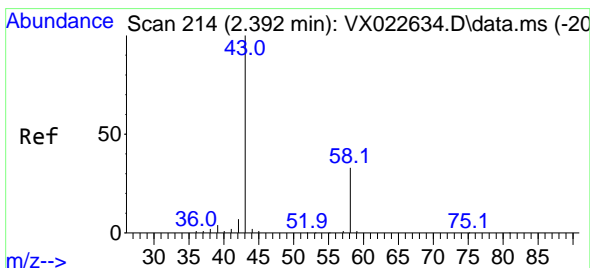
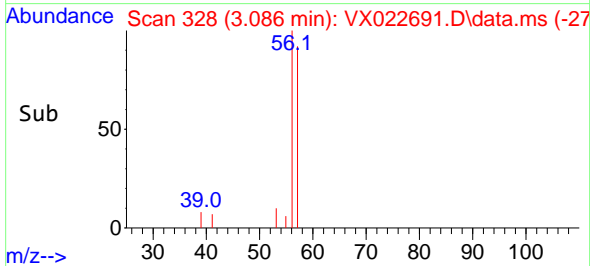
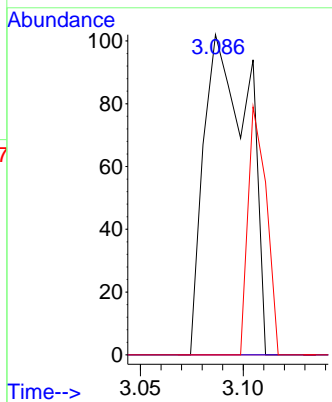


#15  
 Acrylonitrile  
 Concen: 0.28 ug/l  
 RT: 3.086 min Scan# 328  
 Delta R.T. 0.011 min  
 Lab File: VX022691.D  
 Acq: 14 Jun 2021 13:53

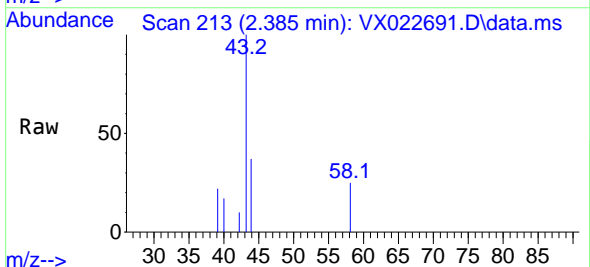
Instrument :  
 MSVOA\_X  
 ClientSampled :



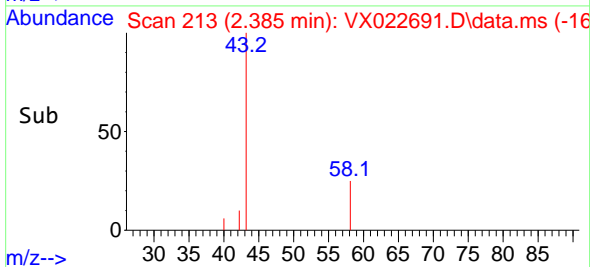
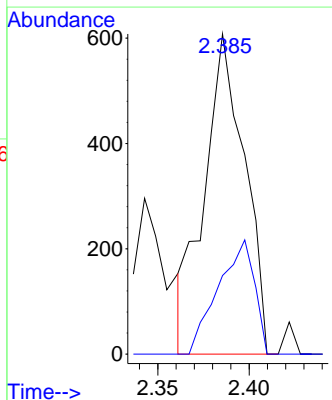
Tgt Ion: 53 Resp: 153  
 Ion Ratio Lower Upper  
 53 100  
 52 0.0 65.3 97.9#  
 51 32.0 28.2 42.2

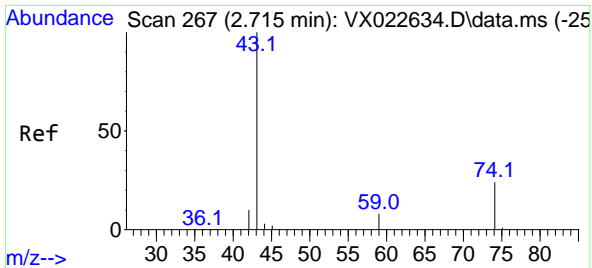


#16  
 Acetone  
 Concen: 1.70 ug/l  
 RT: 2.385 min Scan# 213  
 Delta R.T. -0.007 min  
 Lab File: VX022691.D  
 Acq: 14 Jun 2021 13:53



Tgt Ion: 43 Resp: 931  
 Ion Ratio Lower Upper  
 43 100  
 58 24.5 27.8 41.8#

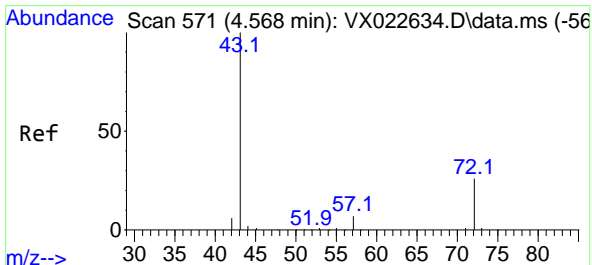
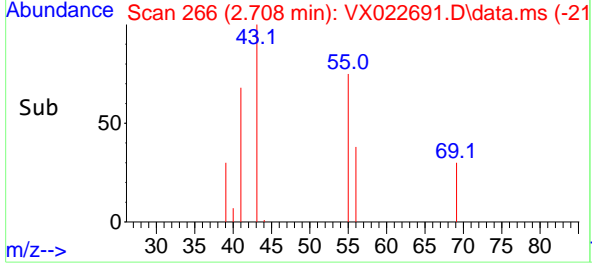
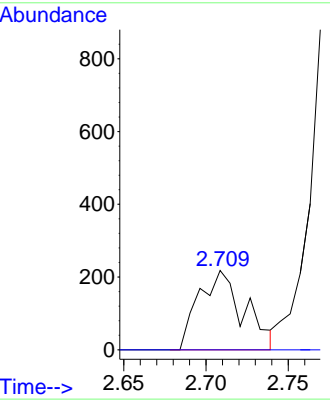
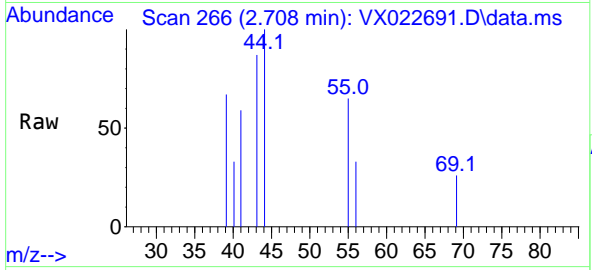




#18  
Methyl Acetate  
Concen: 0.25 ug/l  
RT: 2.708 min Scan# 266  
Delta R.T. -0.001 min  
Lab File: VX022691.D  
Acq: 14 Jun 2021 13:53

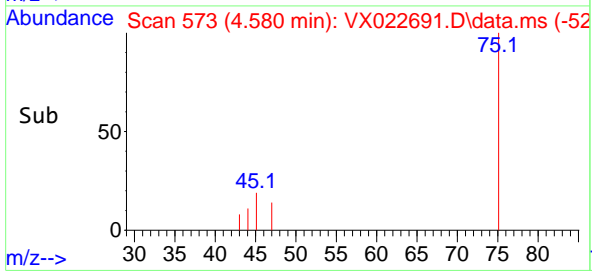
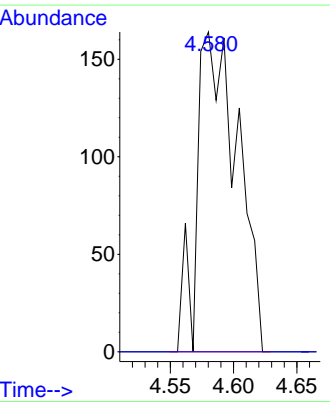
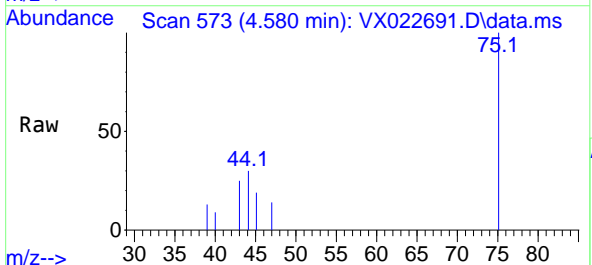
Instrument :  
MSVOA\_X  
ClientSampled :

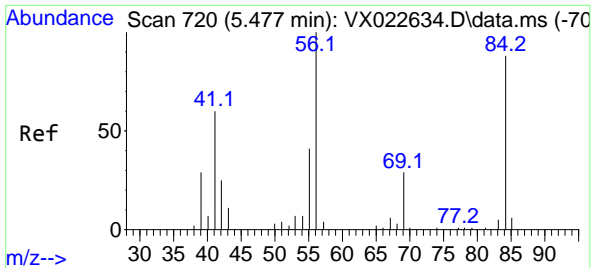
Tgt Ion: 43 Resp: 416  
Ion Ratio Lower Upper  
43 100  
74 0.0 21.9 32.9#



#25  
2-Butanone  
Concen: 0.42 ug/l  
RT: 4.580 min Scan# 573  
Delta R.T. 0.012 min  
Lab File: VX022691.D  
Acq: 14 Jun 2021 13:53

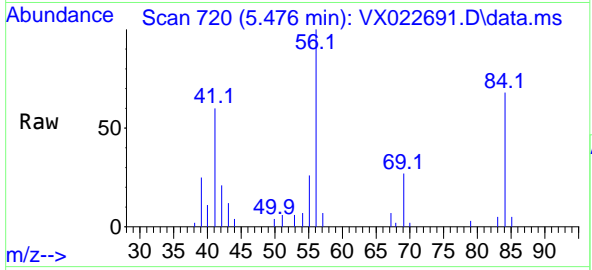
Tgt Ion: 43 Resp: 370  
Ion Ratio Lower Upper  
43 100  
72 0.0 23.7 35.5#





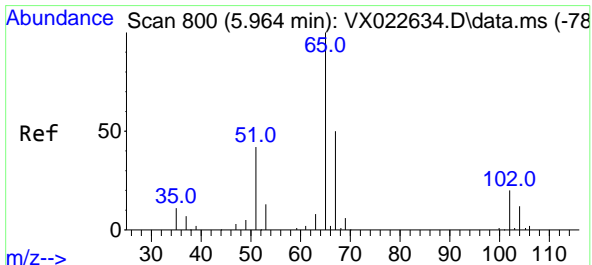
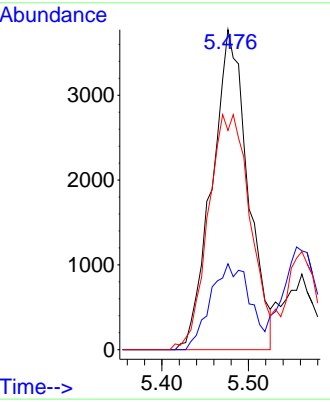
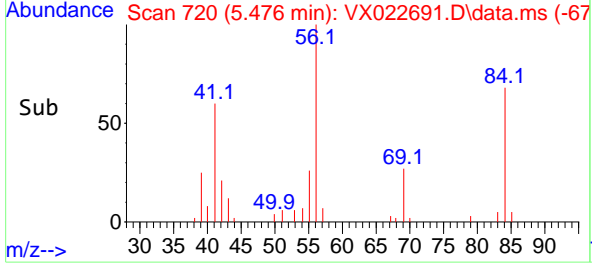
#31  
 Cyclohexane  
 Concen: 7.36 ug/l  
 RT: 5.476 min Scan# 720  
 Delta R.T. -0.001 min  
 Lab File: VX022691.D  
 Acq: 14 Jun 2021 13:53

Instrument :  
 MSVOA\_X  
 ClientSampled :

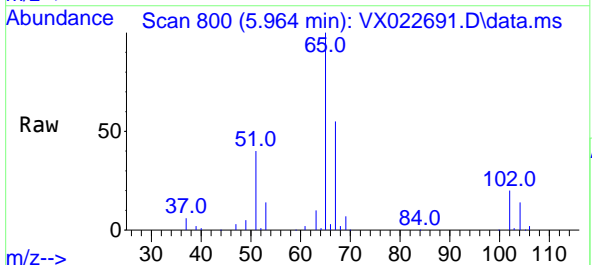


Tgt Ion: 56 Resp: 10862

Ion	Ratio	Lower	Upper
56	100		
69	26.8	25.3	37.9
84	68.5	71.4	107.0#

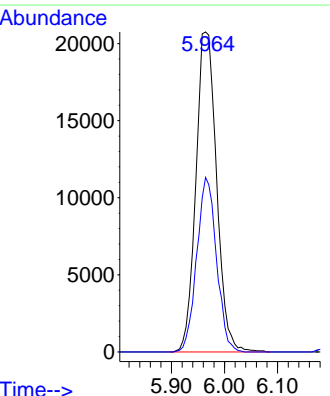
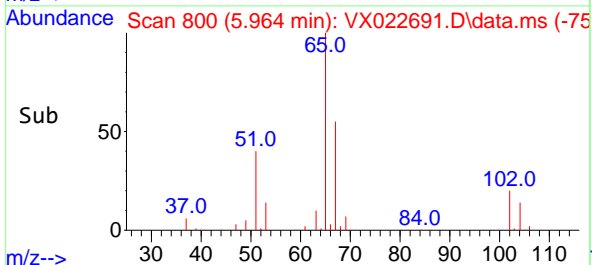


#33  
 1,2-Dichloroethane-d4  
 Concen: 46.05 ug/l  
 RT: 5.964 min Scan# 800  
 Delta R.T. 0.000 min  
 Lab File: VX022691.D  
 Acq: 14 Jun 2021 13:53

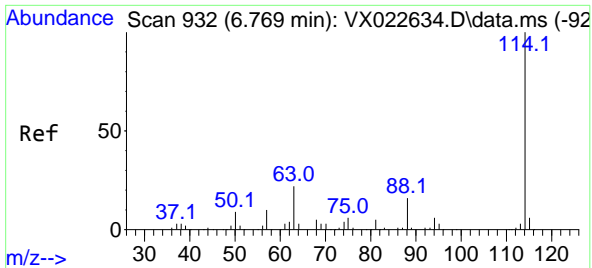


Tgt Ion: 65 Resp: 56299

Ion	Ratio	Lower	Upper
65	100		
67	52.0	0.0	105.4

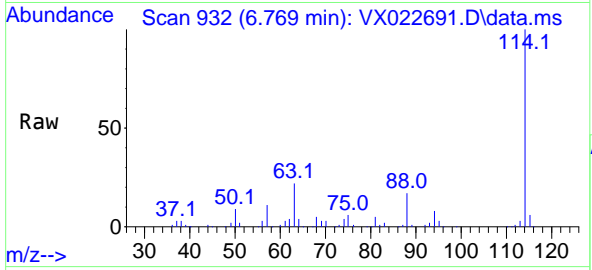




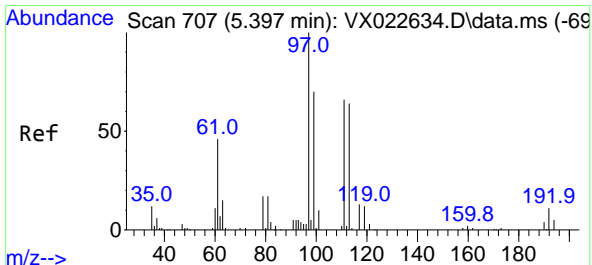
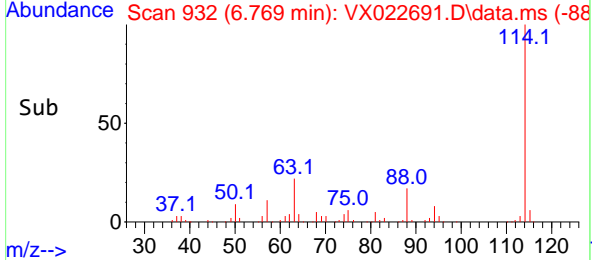
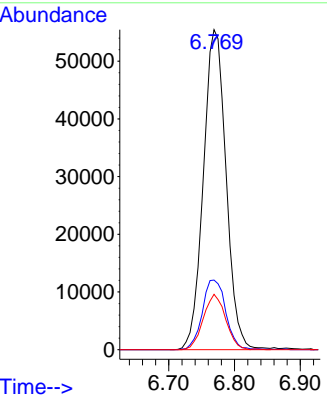


#34  
 1,4-Difluorobenzene  
 Concen: 50.00 ug/l  
 RT: 6.769 min Scan# 932  
 Delta R.T. -0.000 min  
 Lab File: VX022691.D  
 Acq: 14 Jun 2021 13:53

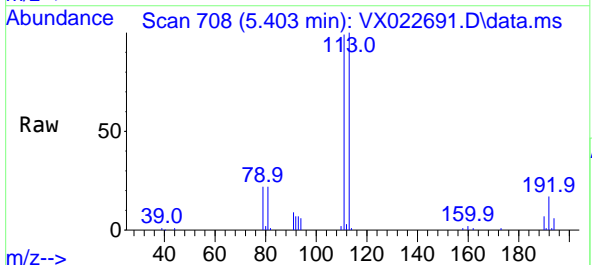
Instrument :  
 MSVOA\_X  
 ClientSampled :



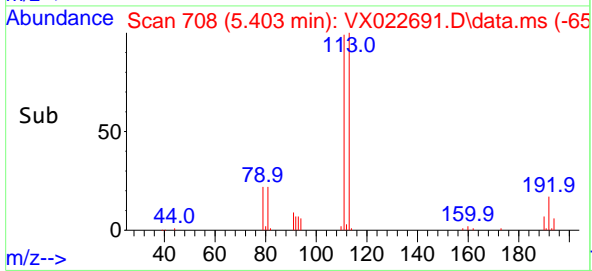
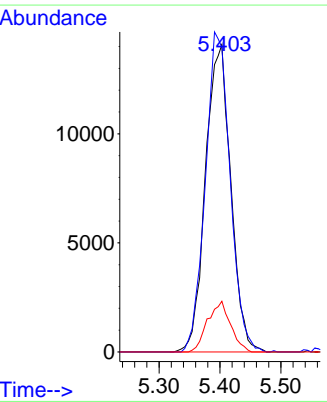
Tgt Ion:114 Resp: 133337  
 Ion Ratio Lower Upper  
 114 100  
 63 21.8 0.0 40.8  
 88 17.3 0.0 32.8

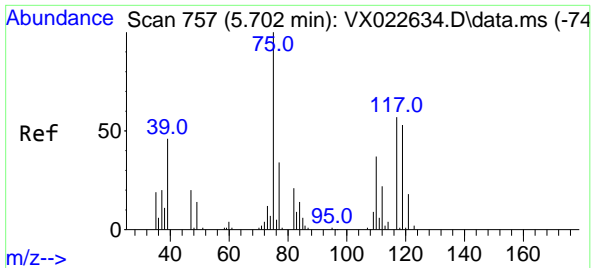


#35  
 Dibromofluoromethane  
 Concen: 47.77 ug/l  
 RT: 5.403 min Scan# 708  
 Delta R.T. 0.012 min  
 Lab File: VX022691.D  
 Acq: 14 Jun 2021 13:53



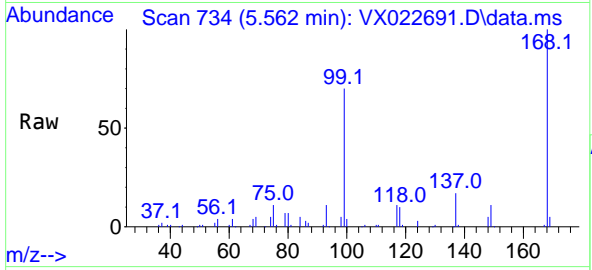
Tgt Ion:113 Resp: 40638  
 Ion Ratio Lower Upper  
 113 100  
 111 101.9 81.9 122.9  
 192 15.0 16.7 25.1#





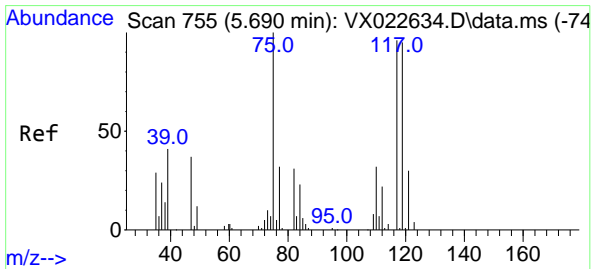
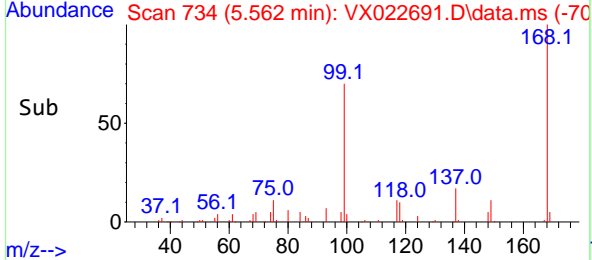
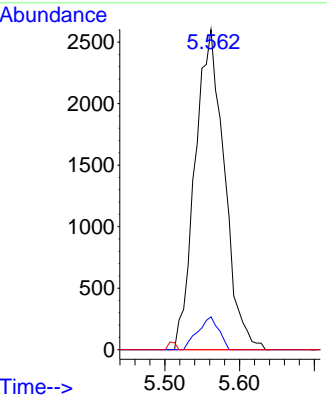
#36  
 1,1-Dichloropropene  
 Concen: 5.33 ug/l  
 RT: 5.562 min Scan# 734  
 Delta R.T. -0.140 min  
 Lab File: VX022691.D  
 Acq: 14 Jun 2021 13:53

Instrument :  
 MSVOA\_X  
 ClientSampled :

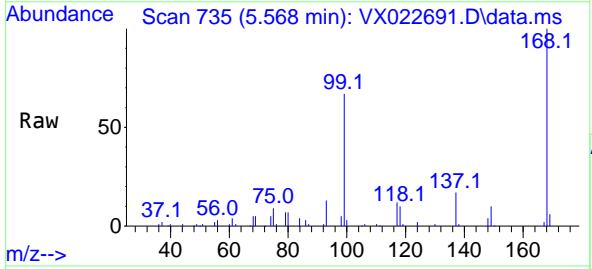


Tgt Ion: 75 Resp: 7087

Ion	Ratio	Lower	Upper
75	100		
110	7.3	18.1	54.4#
77	0.0	25.3	37.9#

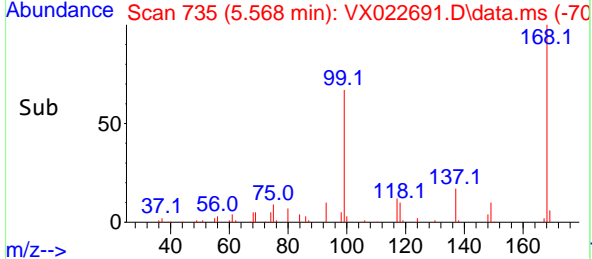
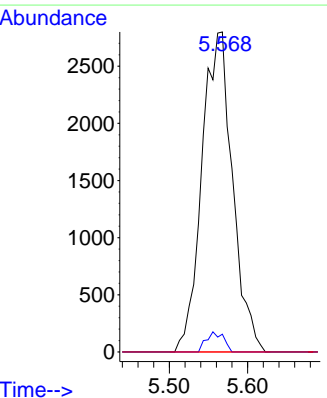


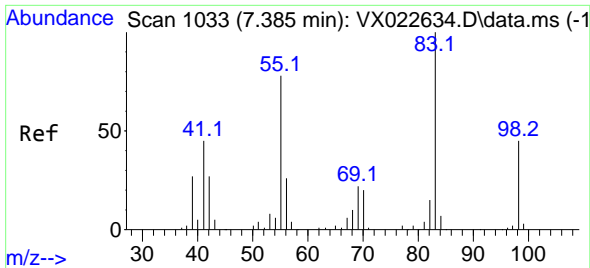
#38  
 Carbon Tetrachloride  
 Concen: 6.71 ug/l  
 RT: 5.568 min Scan# 735  
 Delta R.T. -0.110 min  
 Lab File: VX022691.D  
 Acq: 14 Jun 2021 13:53



Tgt Ion: 117 Resp: 7621

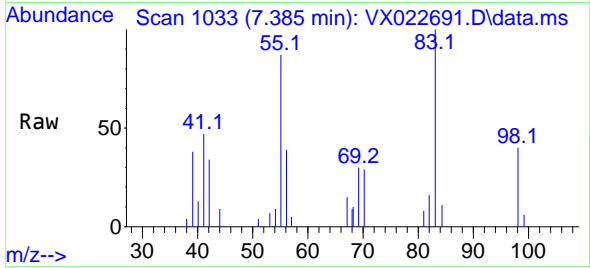
Ion	Ratio	Lower	Upper
117	100		
119	5.6	76.2	114.2#
121	0.0	24.8	37.2#



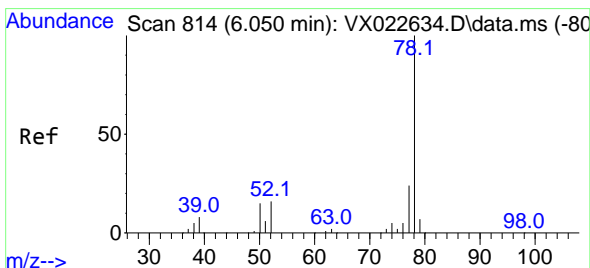
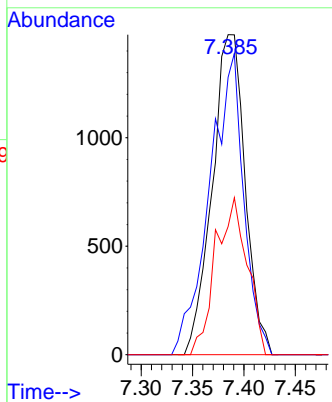
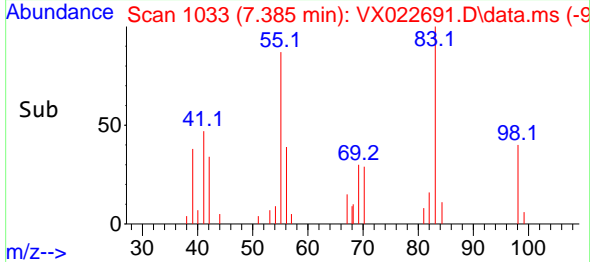


#39  
 Methylcyclohexane  
 Concen: 2.38 ug/l  
 RT: 7.385 min Scan# 1033  
 Delta R.T. -0.000 min  
 Lab File: VX022691.D  
 Acq: 14 Jun 2021 13:53

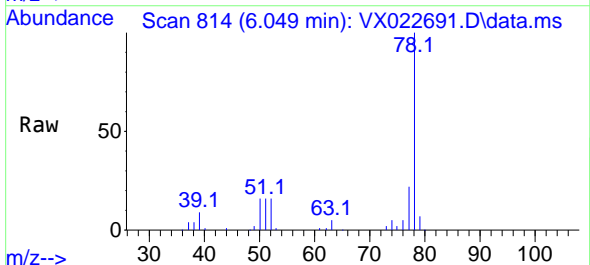
Instrument :  
 MSVOA\_X  
 ClientSampled :



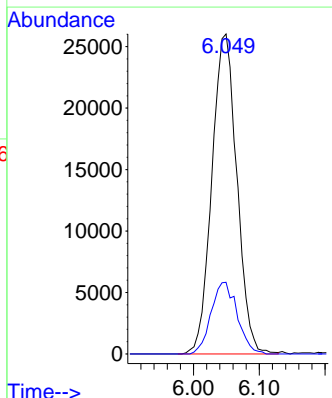
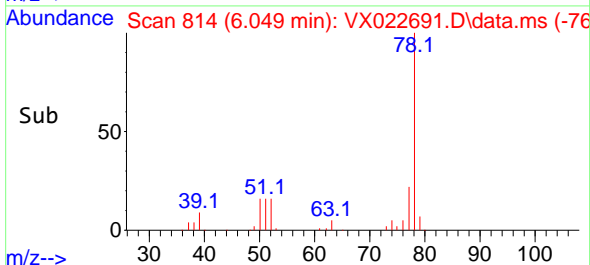
Tgt Ion: 83 Resp: 3295  
 Ion Ratio Lower Upper  
 83 100  
 55 86.7 58.9 88.3  
 98 40.1 38.1 57.1

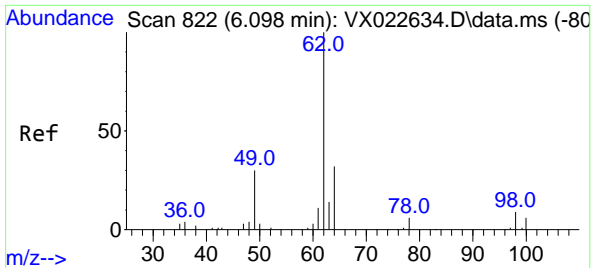


#40  
 Benzene  
 Concen: 17.43 ug/l  
 RT: 6.049 min Scan# 814  
 Delta R.T. -0.001 min  
 Lab File: VX022691.D  
 Acq: 14 Jun 2021 13:53



Tgt Ion: 78 Resp: 68903  
 Ion Ratio Lower Upper  
 78 100  
 77 22.4 18.9 28.3



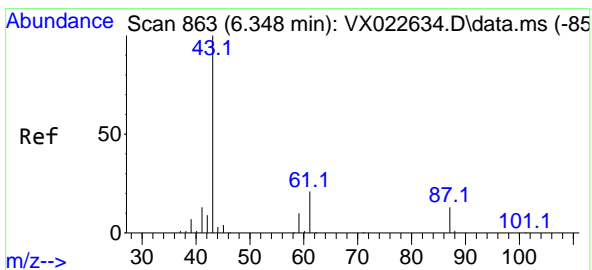
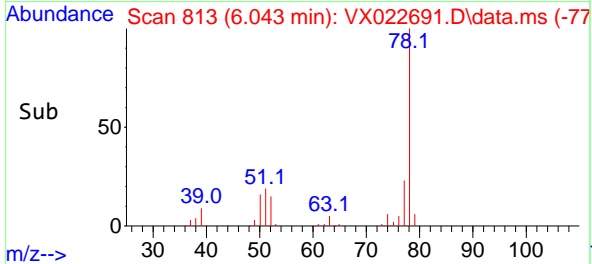
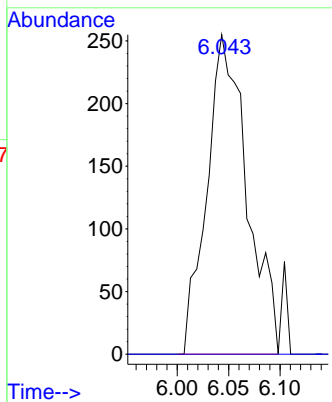
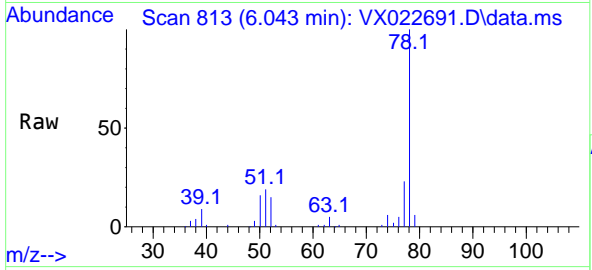


#42  
 1,2-Dichloroethane  
 Concen: 0.48 ug/l  
 RT: 6.043 min Scan# 813  
 Delta R.T. -0.055 min  
 Lab File: VX022691.D  
 Acq: 14 Jun 2021 13:53

Instrument :  
 MSVOA\_X  
 ClientSampled :

Tgt Ion: 62 Resp: 693

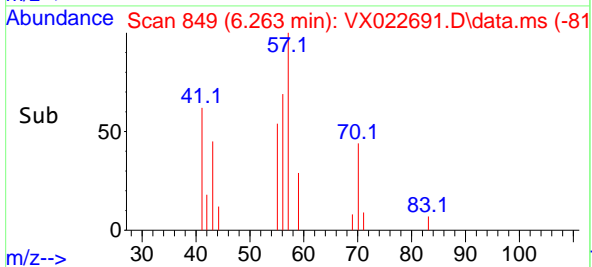
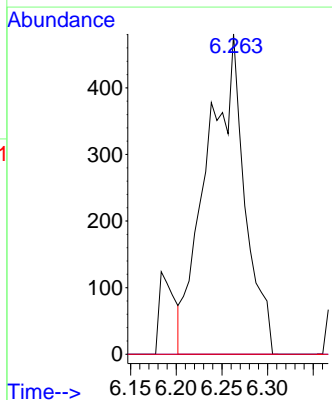
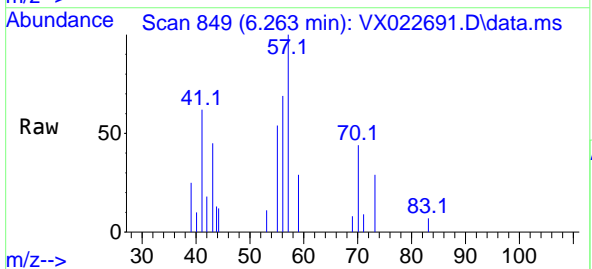
Ion	Ratio	Lower	Upper
62	100		
98	0.0	0.0	20.2

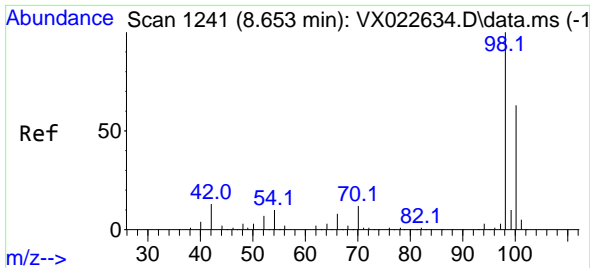


#43  
 Isopropyl Acetate  
 Concen: 0.52 ug/l  
 RT: 6.263 min Scan# 849  
 Delta R.T. -0.085 min  
 Lab File: VX022691.D  
 Acq: 14 Jun 2021 13:53

Tgt Ion: 43 Resp: 1385

Ion	Ratio	Lower	Upper
43	100		
61	0.0	18.2	27.4#
87	0.0	12.5	18.7#

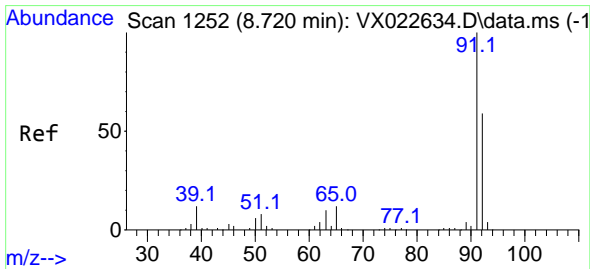
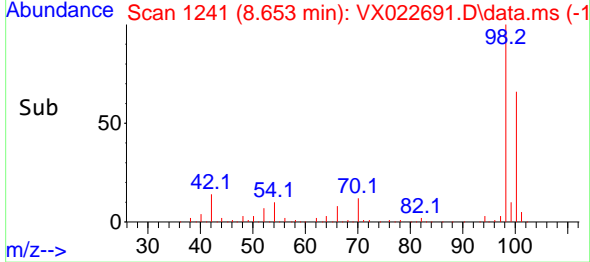
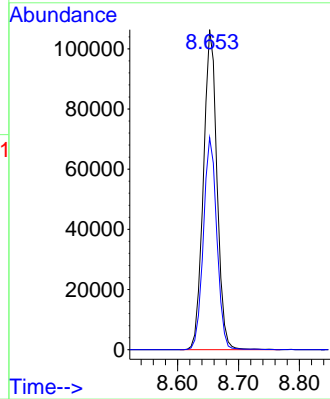
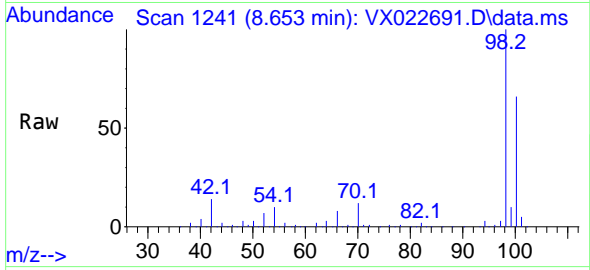




#50  
 Toluene-d8  
 Concen: 49.20 ug/l  
 RT: 8.653 min Scan# 1241  
 Delta R.T. -0.000 min  
 Lab File: VX022691.D  
 Acq: 14 Jun 2021 13:53

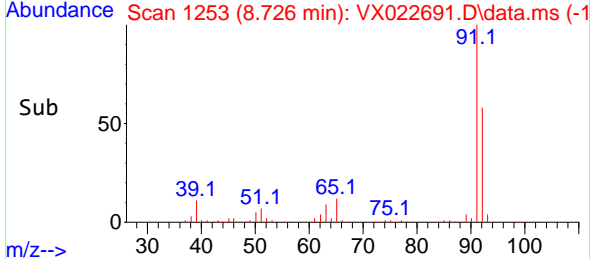
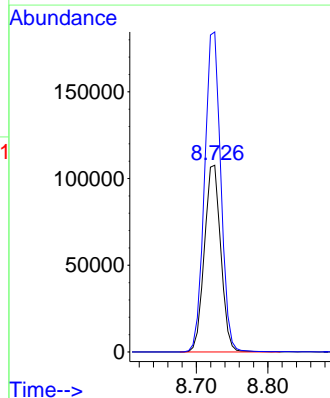
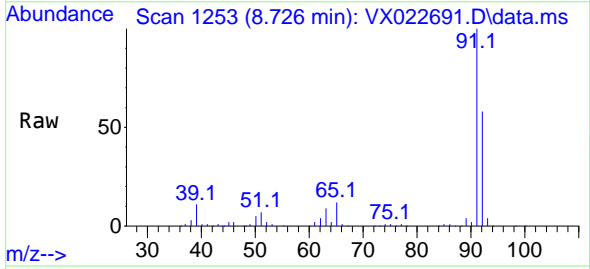
Instrument :  
 MSVOA\_X  
 ClientSampled :

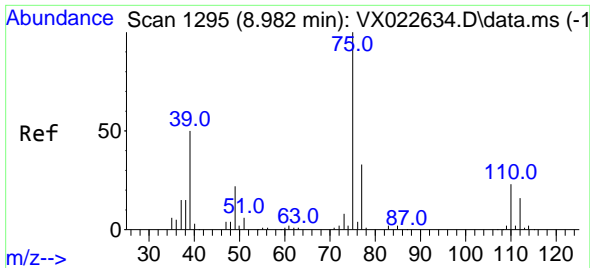
Tgt Ion: 98 Resp: 164988  
 Ion Ratio Lower Upper  
 98 100  
 100 65.5 51.9 77.9



#52  
 Toluene  
 Concen: 69.74 ug/l  
 RT: 8.726 min Scan# 1253  
 Delta R.T. 0.006 min  
 Lab File: VX022691.D  
 Acq: 14 Jun 2021 13:53

Tgt Ion: 92 Resp: 171568  
 Ion Ratio Lower Upper  
 92 100  
 91 170.2 137.1 205.7

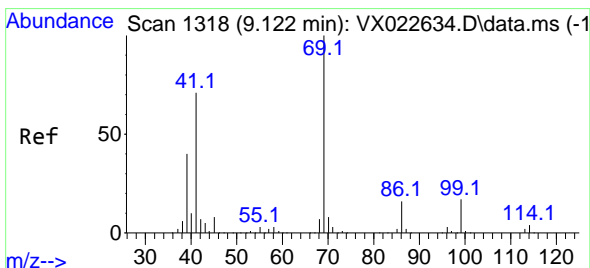
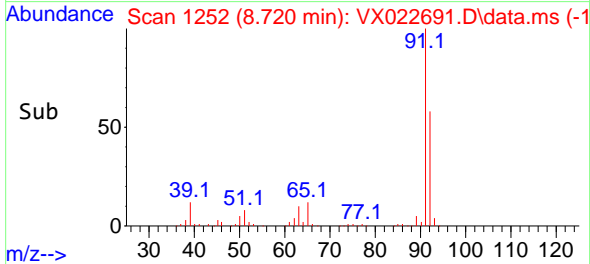
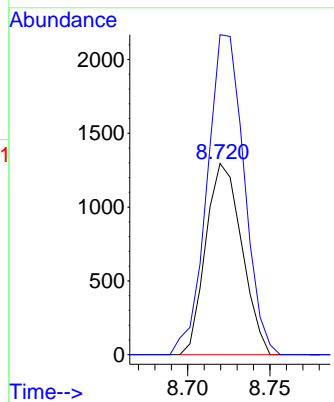
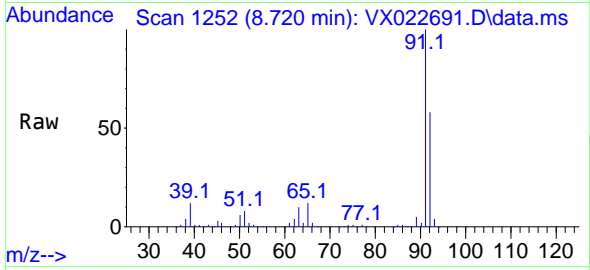




#53  
 t-1,3-Dichloropropene  
 Concen: 4.37 ug/l  
 RT: 8.720 min Scan# 1252  
 Delta R.T. -0.262 min  
 Lab File: VX022691.D  
 Acq: 14 Jun 2021 13:53

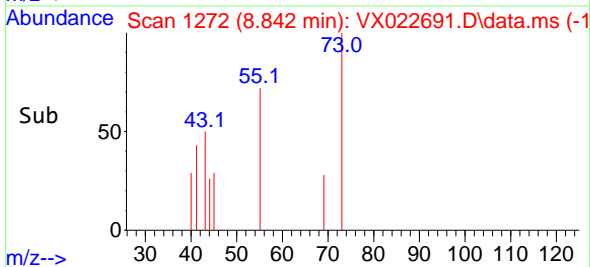
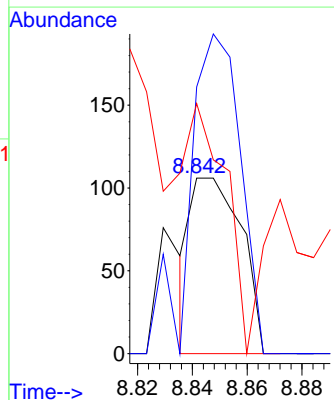
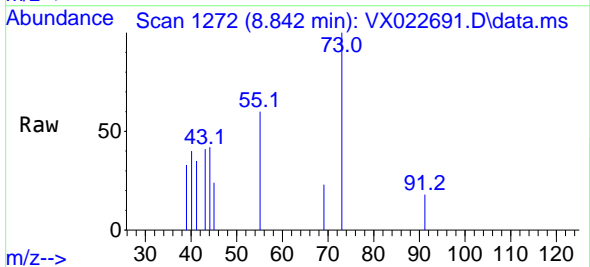
Instrument :  
 MSVOA\_X  
 ClientSampled :

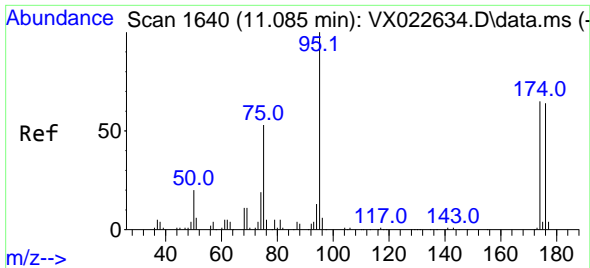
Tgt Ion: 75 Resp: 1973  
 Ion Ratio Lower Upper  
 75 100  
 77 167.4 24.9 37.3#



#56  
 Ethyl methacrylate  
 Concen: 2.36 ug/l  
 RT: 8.842 min Scan# 1272  
 Delta R.T. -0.280 min  
 Lab File: VX022691.D  
 Acq: 14 Jun 2021 13:53

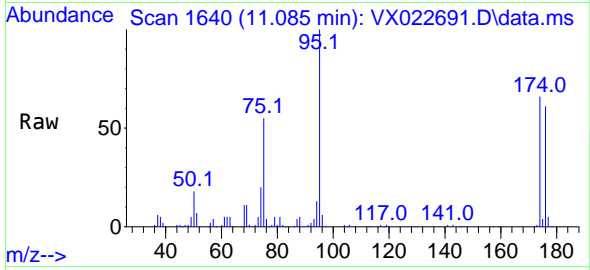
Tgt Ion: 69 Resp: 136  
 Ion Ratio Lower Upper  
 69 100  
 41 166.9 46.8 70.2#  
 39 0.0 24.7 37.1#



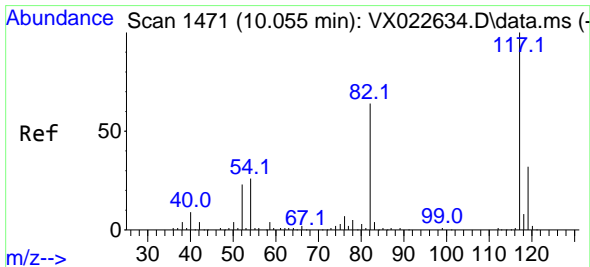
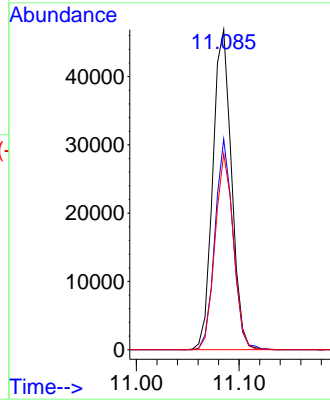
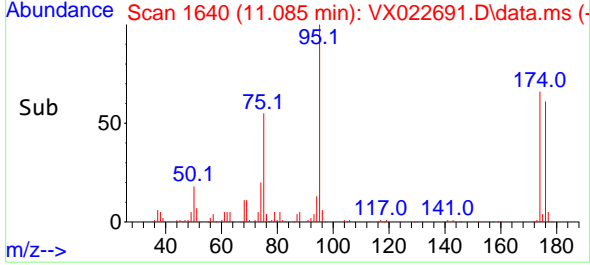


#62  
 4-Bromofluorobenzene  
 Concen: 46.58 ug/l  
 RT: 11.085 min Scan# 1640  
 Delta R.T. 0.000 min  
 Lab File: VX022691.D  
 Acq: 14 Jun 2021 13:53

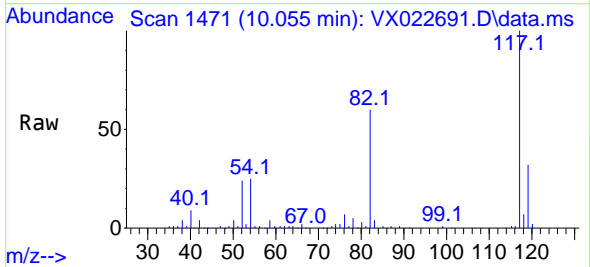
Instrument :  
 MSVOA\_X  
 ClientSampled :



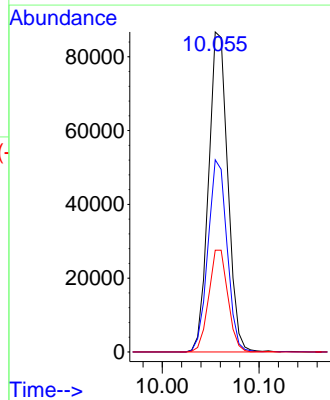
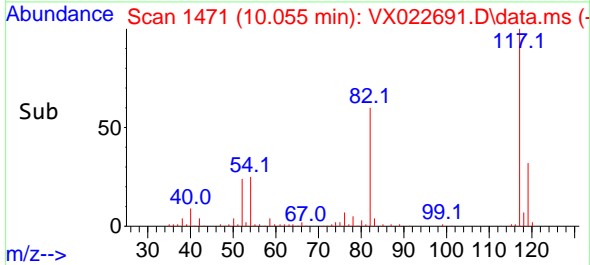
Tgt Ion: 95 Resp: 59077  
 Ion Ratio Lower Upper  
 95 100  
 174 63.2 0.0 154.6  
 176 60.1 0.0 155.8

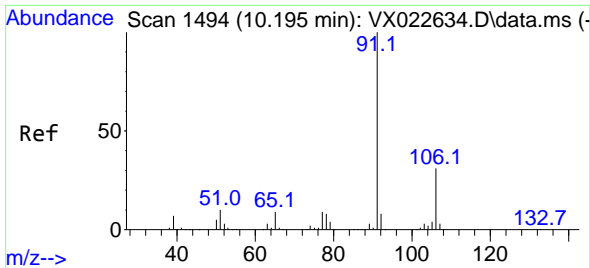


#63  
 Chlorobenzene-d5  
 Concen: 50.00 ug/l  
 RT: 10.055 min Scan# 1471  
 Delta R.T. -0.000 min  
 Lab File: VX022691.D  
 Acq: 14 Jun 2021 13:53



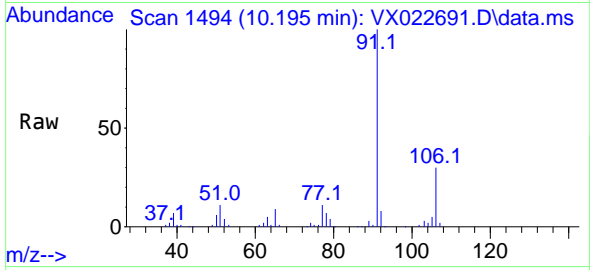
Tgt Ion: 117 Resp: 119884  
 Ion Ratio Lower Upper  
 117 100  
 82 60.0 47.4 71.2  
 119 31.8 26.6 39.8



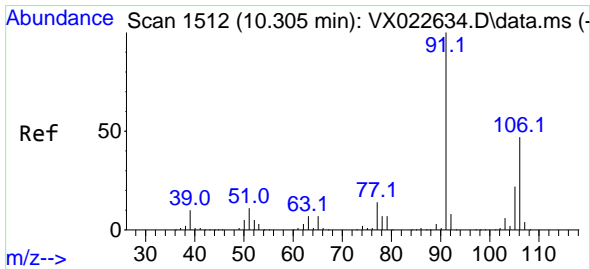
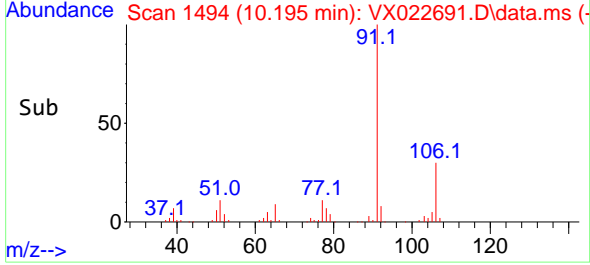
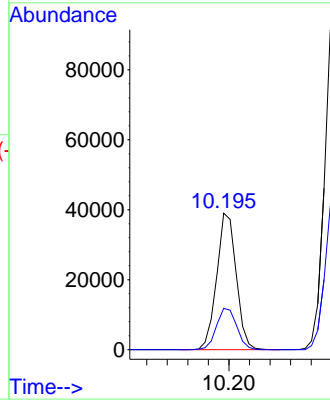


#67  
 Ethyl Benzene  
 Concen: 11.16 ug/l  
 RT: 10.195 min Scan# 1494  
 Delta R.T. -0.000 min  
 Lab File: VX022691.D  
 Acq: 14 Jun 2021 13:53

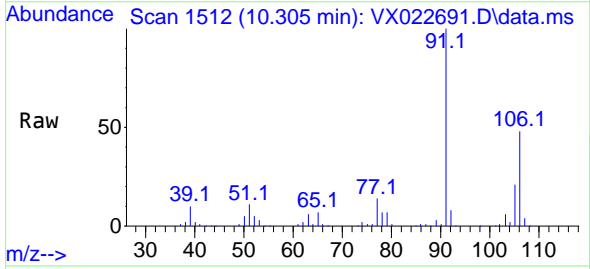
Instrument :  
 MSVOA\_X  
 ClientSampled :



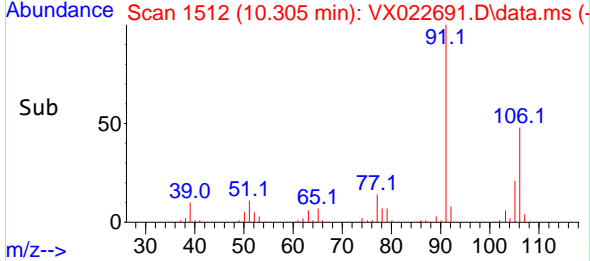
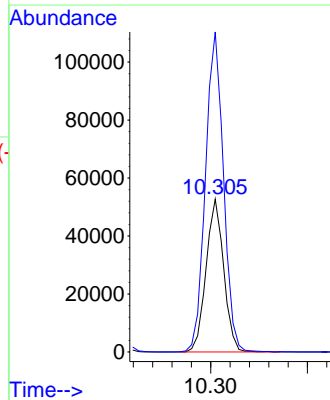
Tgt Ion: 91 Resp: 51336  
 Ion Ratio Lower Upper  
 91 100  
 106 30.3 24.6 37.0



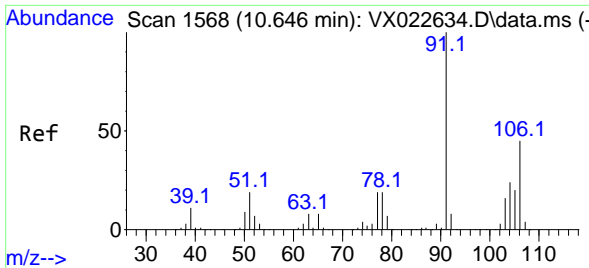
#68  
 m/p-Xylenes  
 Concen: 40.17 ug/l  
 RT: 10.305 min Scan# 1512  
 Delta R.T. -0.000 min  
 Lab File: VX022691.D  
 Acq: 14 Jun 2021 13:53



Tgt Ion: 106 Resp: 66931  
 Ion Ratio Lower Upper  
 106 100  
 91 214.1 162.8 244.2



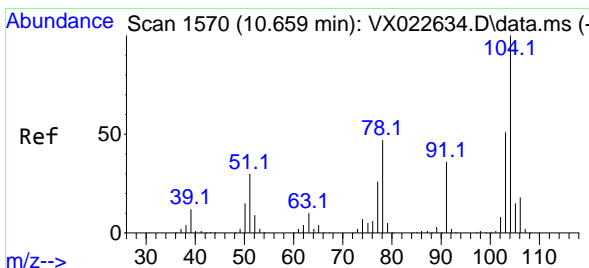
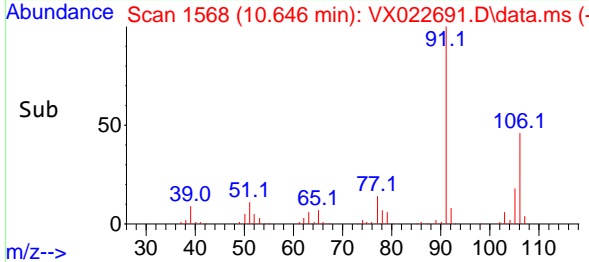
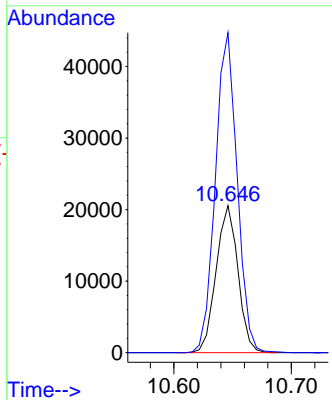
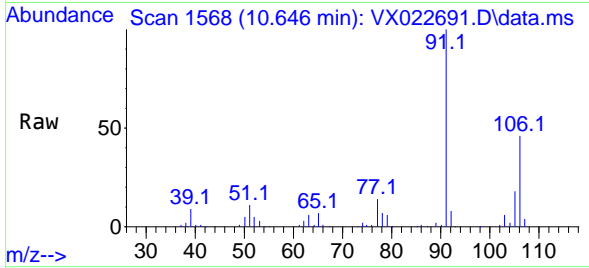




#69  
 o-Xylene  
 Concen: 16.44 ug/l  
 RT: 10.646 min Scan# 1568  
 Delta R.T. 0.000 min  
 Lab File: VX022691.D  
 Acq: 14 Jun 2021 13:53

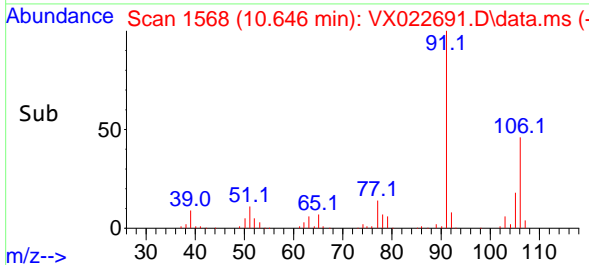
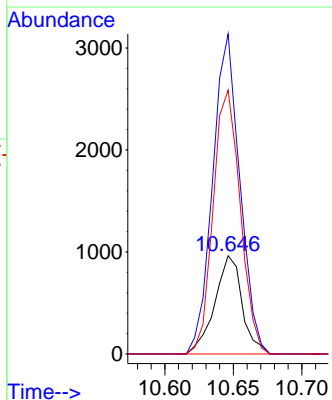
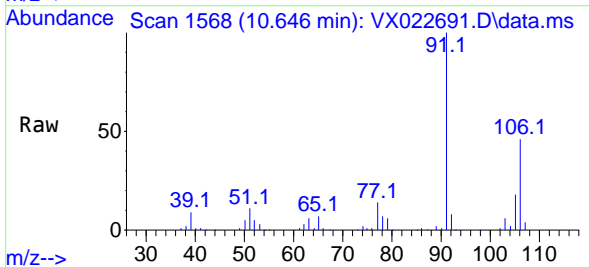
Instrument :  
 MSVOA\_X  
 ClientSampled :

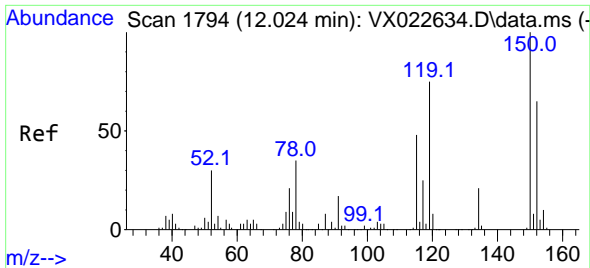
Tgt Ion:106 Resp: 26545  
 Ion Ratio Lower Upper  
 106 100  
 91 217.4 108.1 324.2



#70  
 Styrene  
 Concen: 1.89 ug/l  
 RT: 10.646 min Scan# 1568  
 Delta R.T. -0.013 min  
 Lab File: VX022691.D  
 Acq: 14 Jun 2021 13:53

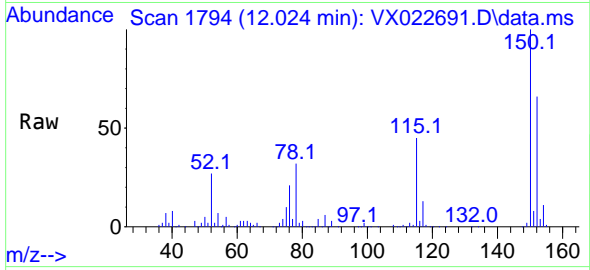
Tgt Ion:104 Resp: 1340  
 Ion Ratio Lower Upper  
 104 100  
 78 323.0 40.0 60.0#  
 103 265.2 43.4 65.0#



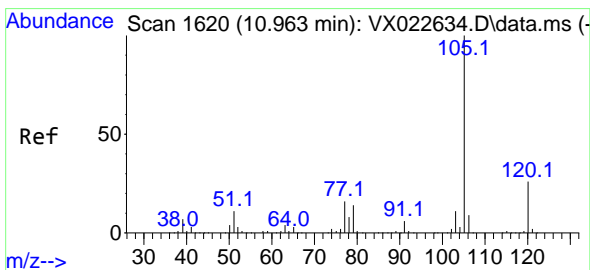
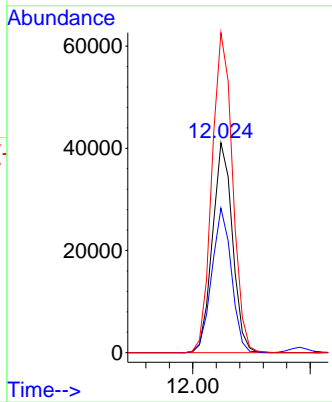
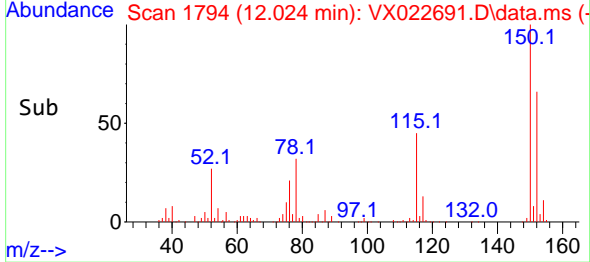


#72  
 1,4-Dichlorobenzene-d4  
 Concen: 50.00 ug/l  
 RT: 12.024 min Scan# 1794  
 Delta R.T. -0.000 min  
 Lab File: VX022691.D  
 Acq: 14 Jun 2021 13:53

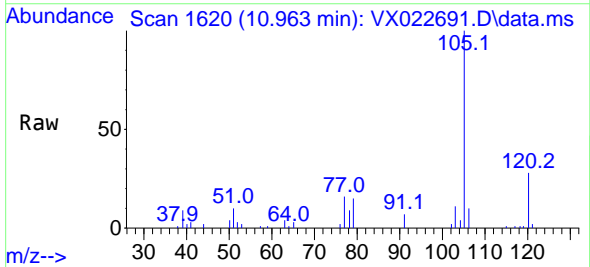
Instrument :  
 MSVOA\_X  
 ClientSampled :



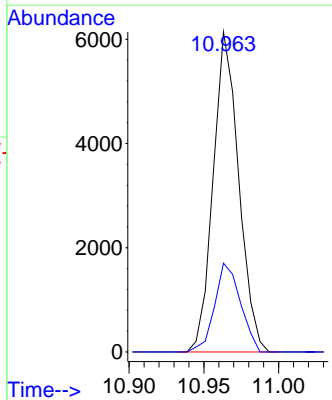
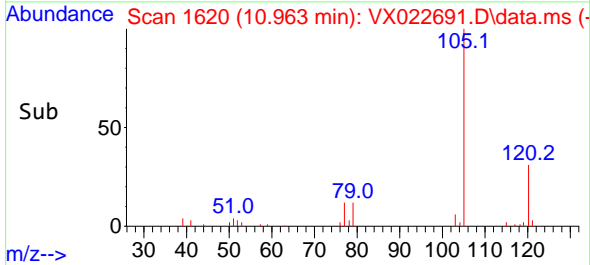
Tgt Ion:152 Resp: 48614  
 Ion Ratio Lower Upper  
 152 100  
 115 67.8 41.1 123.3  
 150 157.0 0.0 349.0

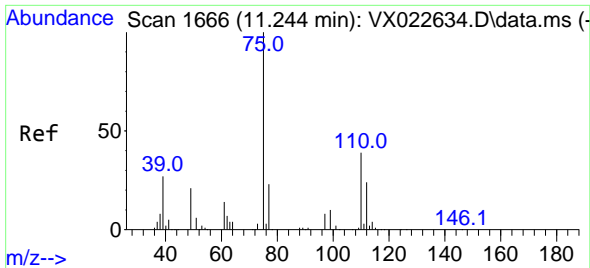


#73  
 Isopropylbenzene  
 Concen: 1.83 ug/l  
 RT: 10.963 min Scan# 1620  
 Delta R.T. 0.000 min  
 Lab File: VX022691.D  
 Acq: 14 Jun 2021 13:53



Tgt Ion:105 Resp: 7289  
 Ion Ratio Lower Upper  
 105 100  
 120 28.0 13.2 39.6

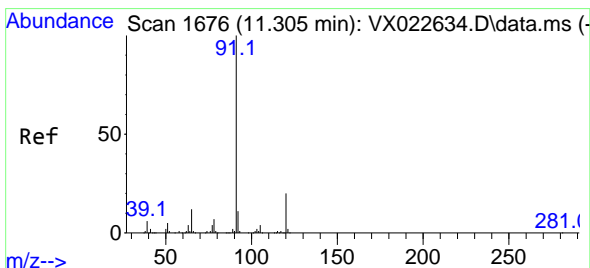
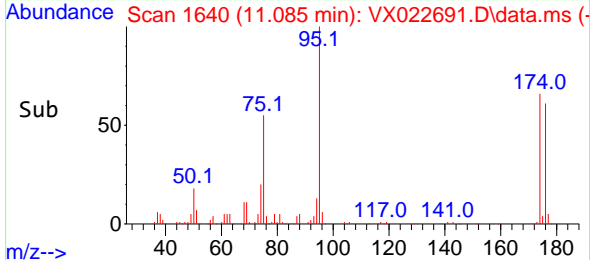
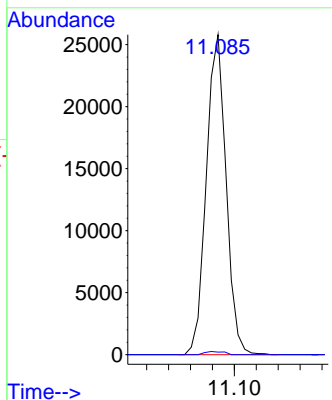
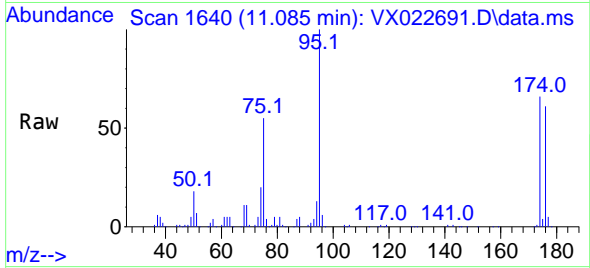




#76  
 1,2,3-Trichloropropane  
 Concen: 25.03 ug/l  
 RT: 11.085 min Scan# 1640  
 Delta R.T. -0.159 min  
 Lab File: VX022691.D  
 Acq: 14 Jun 2021 13:53

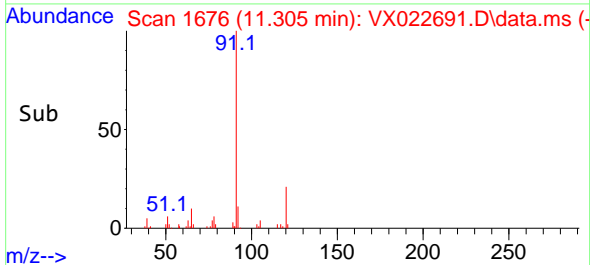
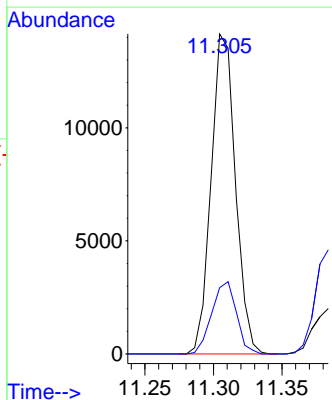
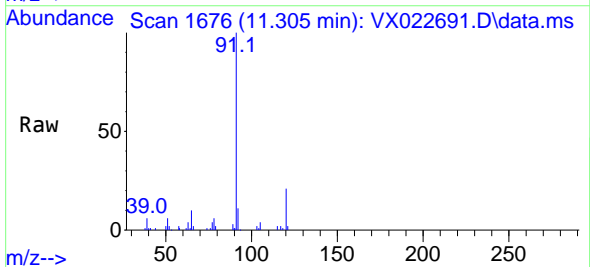
Instrument :  
 MSVOA\_X  
 ClientSampled :

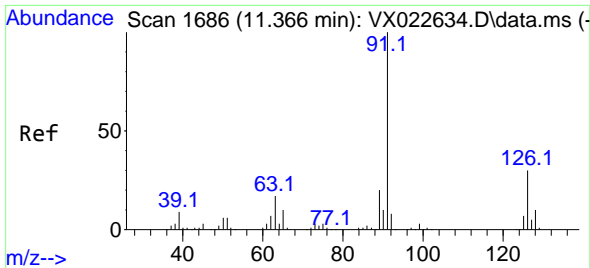
Tgt Ion: 75 Resp: 32264  
 Ion Ratio Lower Upper  
 75 100  
 77 1.0 19.1 57.5#



#78  
 n-propylbenzene  
 Concen: 3.62 ug/l  
 RT: 11.305 min Scan# 1676  
 Delta R.T. -0.000 min  
 Lab File: VX022691.D  
 Acq: 14 Jun 2021 13:53

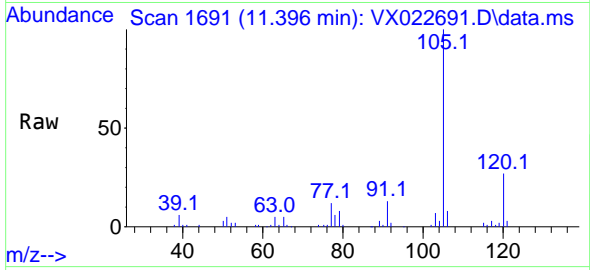
Tgt Ion: 91 Resp: 17438  
 Ion Ratio Lower Upper  
 91 100  
 120 22.9 11.5 34.5



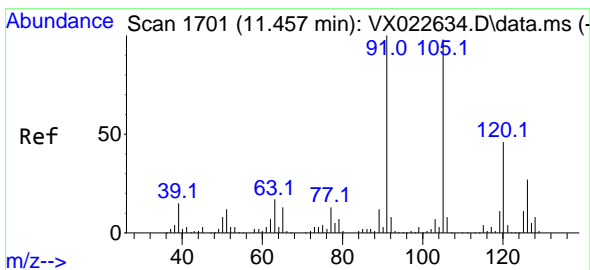
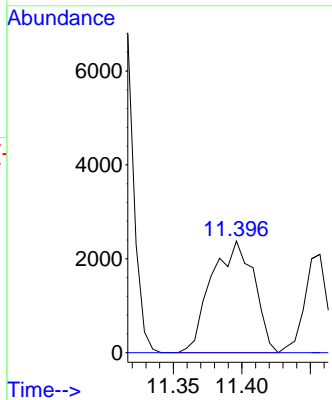
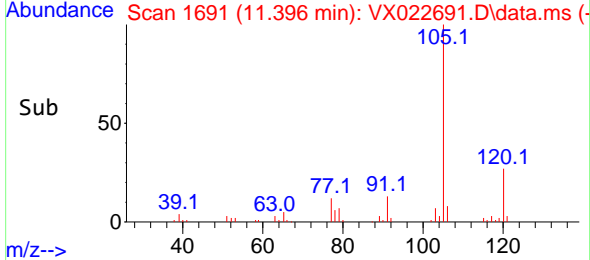


#79  
 2-Chlorotoluene  
 Concen: 1.77 ug/l  
 RT: 11.396 min Scan# 1691  
 Delta R.T. 0.030 min  
 Lab File: VX022691.D  
 Acq: 14 Jun 2021 13:53

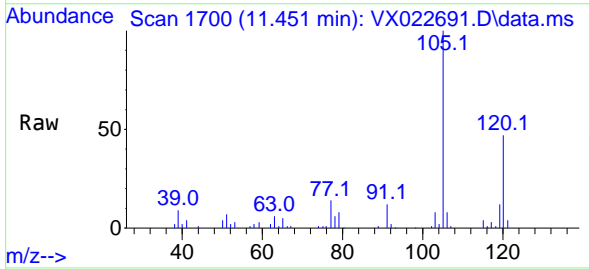
Instrument : MSVOA\_X  
 ClientSampled :



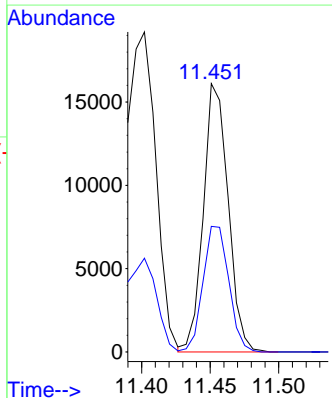
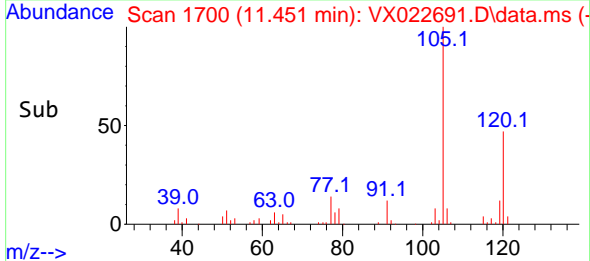
Tgt Ion: 91 Resp: 5166  
 Ion Ratio Lower Upper  
 91 100  
 126 0.0 16.6 49.8#

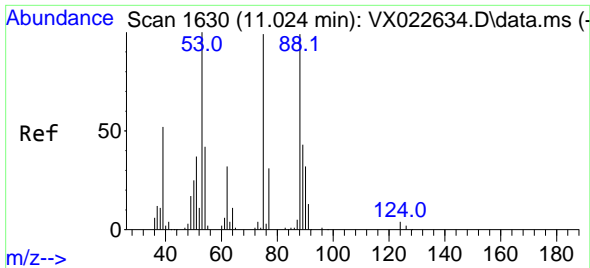


#80  
 1,3,5-Trimethylbenzene  
 Concen: 6.09 ug/l  
 RT: 11.451 min Scan# 1700  
 Delta R.T. -0.006 min  
 Lab File: VX022691.D  
 Acq: 14 Jun 2021 13:53



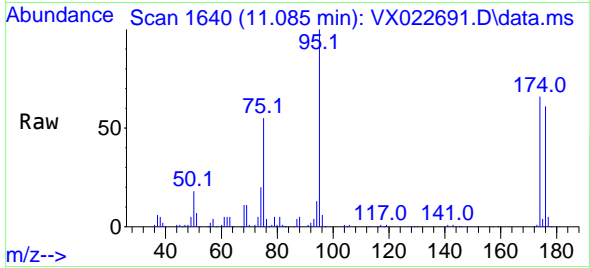
Tgt Ion: 105 Resp: 20237  
 Ion Ratio Lower Upper  
 105 100  
 120 48.8 23.8 71.5



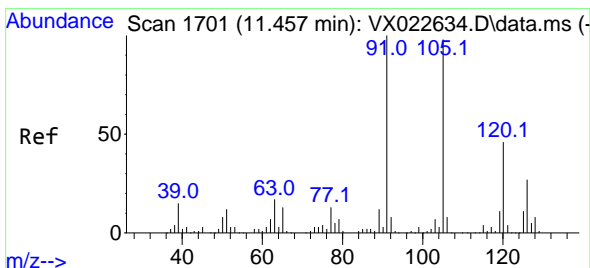
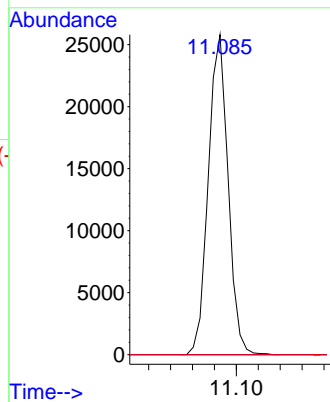
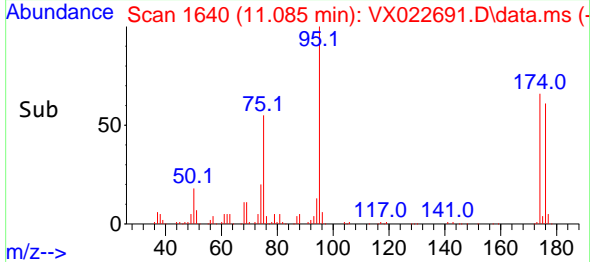


#81  
 trans-1,4-Dichloro-2-butene  
 Concen: 63.02 ug/l  
 RT: 11.085 min Scan# 1640  
 Delta R.T. 0.061 min  
 Lab File: VX022691.D  
 Acq: 14 Jun 2021 13:53

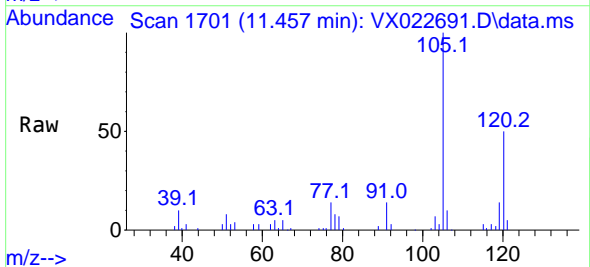
Instrument :  
 MSVOA\_X  
 ClientSampled :



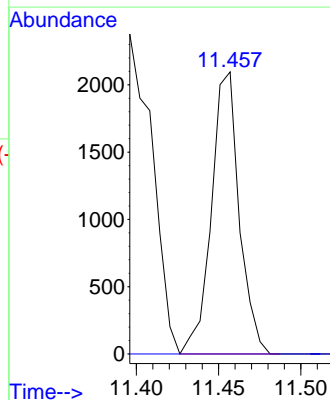
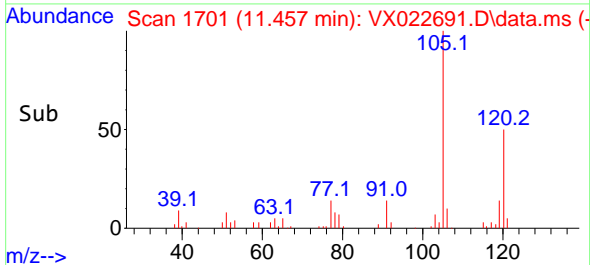
Tgt Ion: 75 Resp: 32264  
 Ion Ratio Lower Upper  
 75 100  
 53 0.0 74.5 111.7#  
 89 0.0 37.9 56.9#

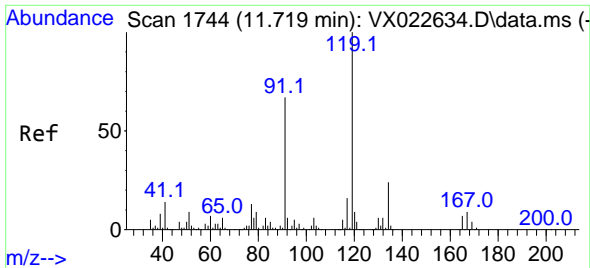


#82  
 4-Chlorotoluene  
 Concen: 0.74 ug/l  
 RT: 11.457 min Scan# 1701  
 Delta R.T. -0.000 min  
 Lab File: VX022691.D  
 Acq: 14 Jun 2021 13:53



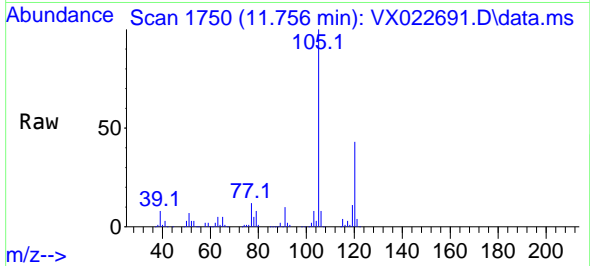
Tgt Ion: 91 Resp: 2471  
 Ion Ratio Lower Upper  
 91 100  
 126 0.0 14.9 44.5#



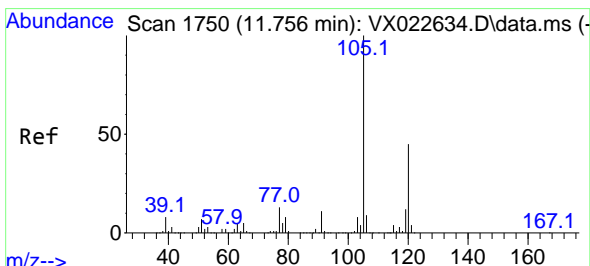
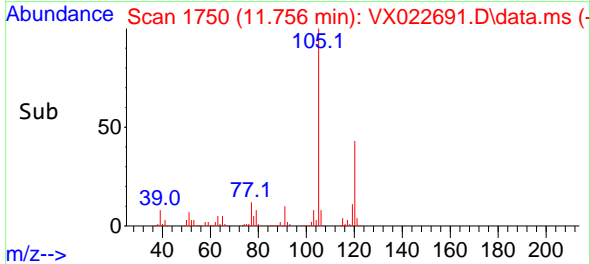
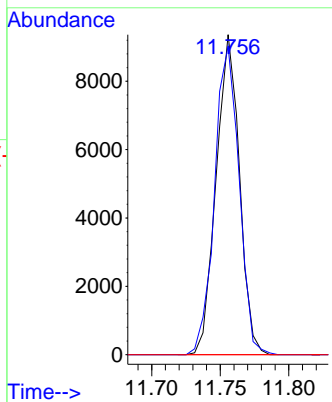


#83  
 tert-Butylbenzene  
 Concen: 3.53 ug/l  
 RT: 11.756 min Scan# 1750  
 Delta R.T. 0.037 min  
 Lab File: VX022691.D  
 Acq: 14 Jun 2021 13:53

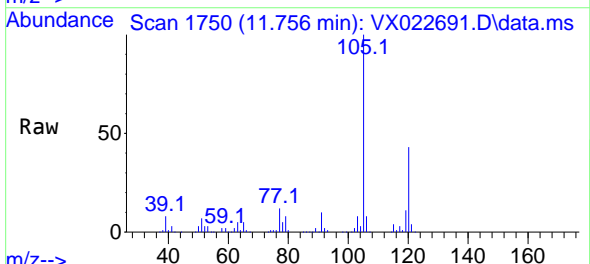
Instrument :  
 MSVOA\_X  
 ClientSampled :



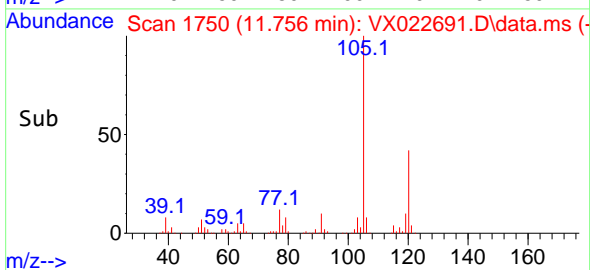
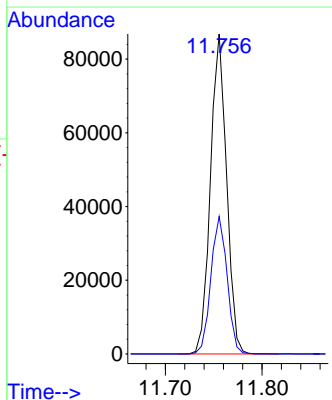
Tgt Ion:119 Resp: 11037  
 Ion Ratio Lower Upper  
 119 100  
 91 101.5 27.9 83.7#  
 134 0.0 11.3 33.9#

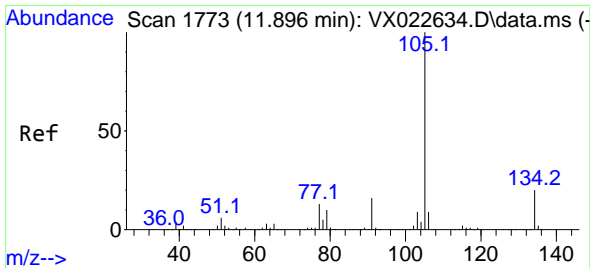


#84  
 1,2,4-Trimethylbenzene  
 Concen: 29.83 ug/l  
 RT: 11.756 min Scan# 1750  
 Delta R.T. -0.000 min  
 Lab File: VX022691.D  
 Acq: 14 Jun 2021 13:53



Tgt Ion:105 Resp: 100597  
 Ion Ratio Lower Upper  
 105 100  
 120 43.2 22.4 67.3

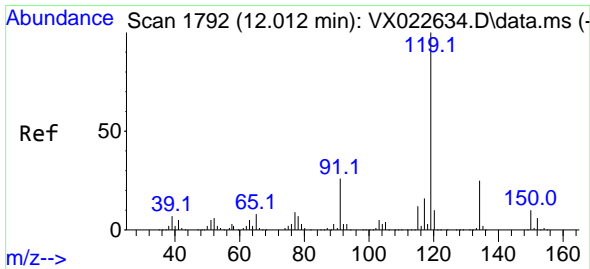
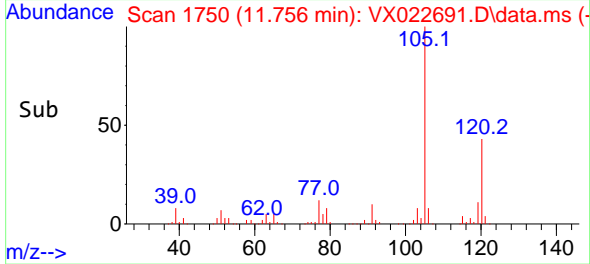
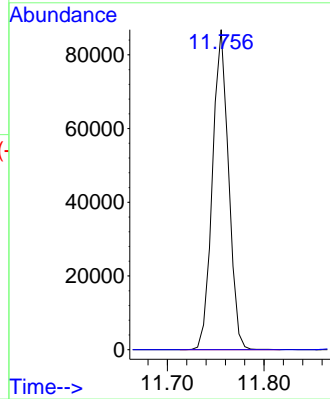
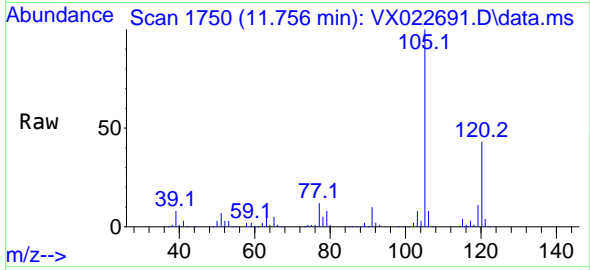




#85  
 sec-Butylbenzene  
 Concen: 24.66 ug/l  
 RT: 11.756 min Scan# 1750  
 Delta R.T. -0.140 min  
 Lab File: VX022691.D  
 Acq: 14 Jun 2021 13:53

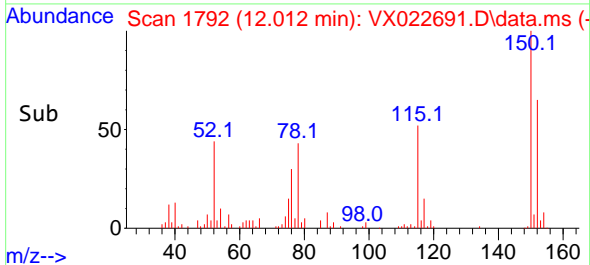
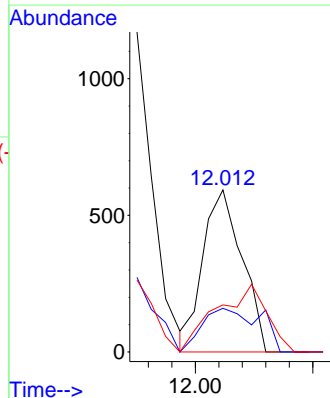
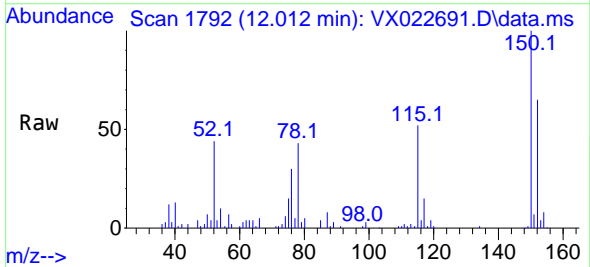
Instrument :  
 MSVOA\_X  
 ClientSampled :

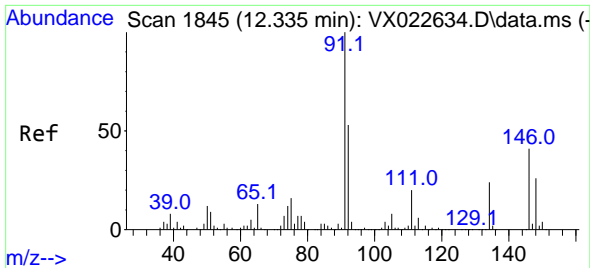
Tgt Ion:105 Resp: 100597  
 Ion Ratio Lower Upper  
 105 100  
 134 0.0 10.0 29.8#



#86  
 p-Isopropyltoluene  
 Concen: 0.20 ug/l  
 RT: 12.012 min Scan# 1792  
 Delta R.T. -0.000 min  
 Lab File: VX022691.D  
 Acq: 14 Jun 2021 13:53

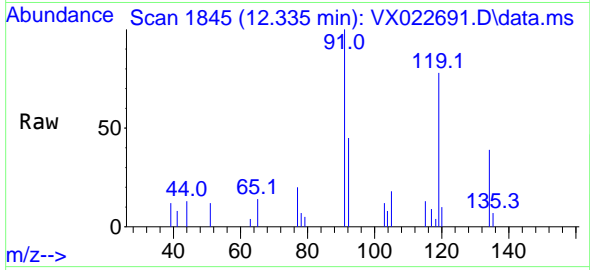
Tgt Ion:119 Resp: 687  
 Ion Ratio Lower Upper  
 119 100  
 134 39.7 12.9 38.7#  
 91 54.0 11.7 35.0#





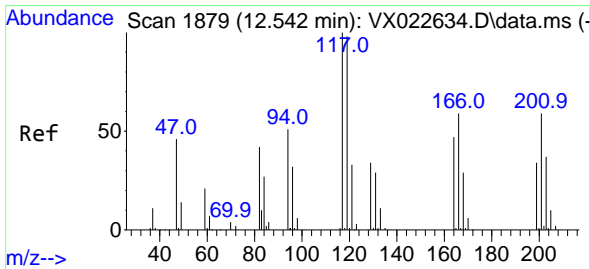
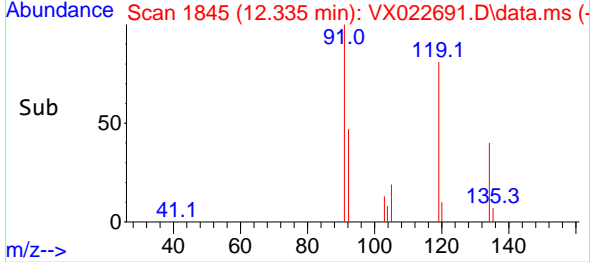
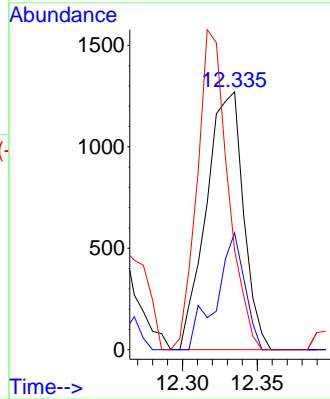
#89  
 n-Butylbenzene  
 Concen: 0.68 ug/l  
 RT: 12.335 min Scan# 1845  
 Delta R.T. -0.000 min  
 Lab File: VX022691.D  
 Acq: 14 Jun 2021 13:53

Instrument :  
 MSVOA\_X  
 ClientSampled :



Tgt Ion: 91 Resp: 2201

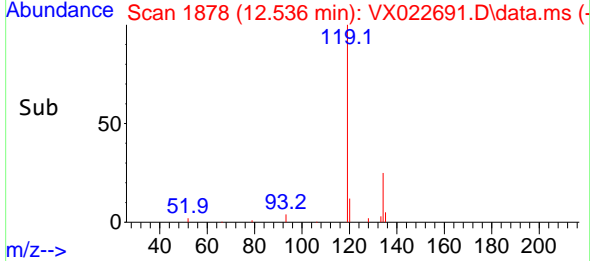
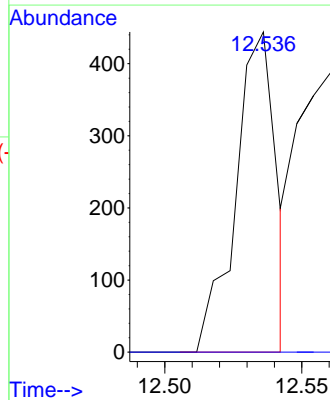
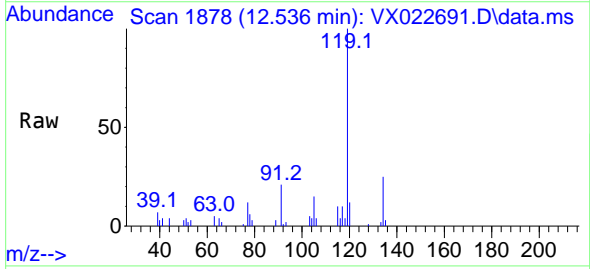
Ion	Ratio	Lower	Upper
91	100		
92	34.4	27.4	82.0
134	102.7	13.2	39.5#



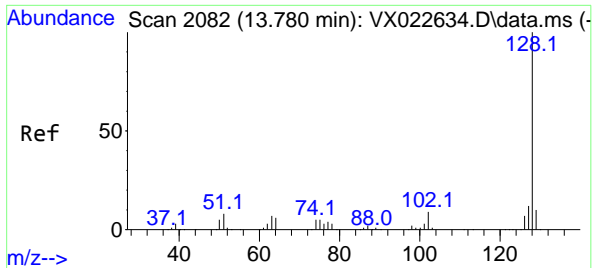
#90  
 Hexachloroethane  
 Concen: 4.43 ug/l  
 RT: 12.536 min Scan# 1878  
 Delta R.T. -0.006 min  
 Lab File: VX022691.D  
 Acq: 14 Jun 2021 13:53

Tgt Ion: 117 Resp: 458

Ion	Ratio	Lower	Upper
117	100		
201	0.0	40.4	121.2#

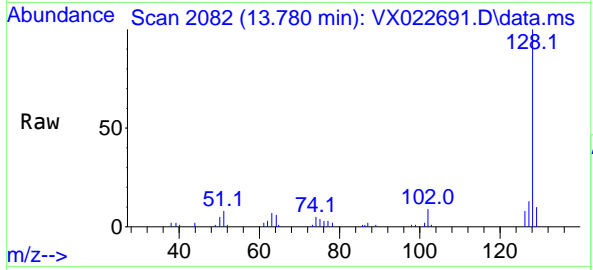






#95  
 Naphthalene  
 Concen: 4.53 ug/l  
 RT: 13.780 min Scan# 2082  
 Delta R.T. -0.000 min  
 Lab File: VX022691.D  
 Acq: 14 Jun 2021 13:53

Instrument :  
 MSVOA\_X  
 ClientSampled :



Tgt Ion:128 Resp: 13003

Ion	Ratio	Lower	Upper
128	100		
127	11.8	10.3	15.5
129	10.5	8.8	13.2

