

Data Path : Z:\voasrv\HPCHEM1\MSVOA_X\Data\VX061422\
 Data File : VX029495.D
 Acq On : 15 Jun 2022 02:59
 Operator : JC/MD
 Sample : N3226-16ME
 Misc : 5.75g/5mL/100uL/5.03mL/MSVOA_X/MEOH
 ALS Vial : 40 Sample Multiplier: 1

Instrument :
 MSVOA_X
 ClientSampleId :
 EW4N6ME

Integration Parameters: LSCINT.P

Integrator: RTE
 Smoothing : OFF Filtering: 5
 Sampling : 1 Min Area: 0 % of largest Peak
 Start Thrs: 0.2 Max Peaks: 100
 Stop Thrs : 0 Peak Location: TOP

If leading or trailing edge < 100 prefer < Baseline drop else tangent >
 Peak separation: 5

Method : Z:\voasrv\HPCHEM1\MSVOA_X\Method\SFAMXML061322WMA.M
 Title : VOC Analysis

Signal : TIC: VX029495.D\data.ms

peak #	R.T. min	first scan	max scan	last scan	PK TY	peak height	corr. area	corr. % max.	% of total
1	1.367	42	46	55	rVB	76594	99853	11.35%	1.339%
2	1.666	91	95	102	rBV	35729	49150	5.58%	0.659%
3	2.282	190	196	205	rBV	152712	245476	27.89%	3.291%
4	2.727	264	269	272	rBV2	3064	5920	0.67%	0.079%
5	2.952	297	306	321	rBV	16544	55976	6.36%	0.750%
6	3.361	370	373	374	rBV2	270	258	0.03%	0.003%
7	3.428	380	384	387	rBV2	592	761	0.09%	0.010%
8	3.745	433	436	437	rBV	229	301	0.03%	0.004%
9	3.812	444	447	449	rBV2	267	317	0.04%	0.004%
10	4.104	493	495	498	rBV3	306	353	0.04%	0.005%
11	4.275	518	523	524	rBV3	667	848	0.10%	0.011%
12	4.507	550	561	586	rBV	45721	235903	26.80%	3.163%
13	5.068	640	653	669	rBV	115471	365263	41.50%	4.897%
14	5.214	674	677	679	rVV2	444	574	0.07%	0.008%
15	5.324	693	695	697	rBV2	323	325	0.04%	0.004%
16	5.379	701	704	705	rBV2	536	620	0.07%	0.008%
17	5.799	769	773	774	rVB2	371	418	0.05%	0.006%
18	5.836	774	779	780	rBV2	608	804	0.09%	0.011%
19	5.872	783	785	789	rVB2	319	343	0.04%	0.005%
20	5.970	789	801	819	rBV2	310454	880139	100.00%	11.800%
21	6.250	844	847	849	rVV2	448	384	0.04%	0.005%
22	6.378	859	868	883	rBV4	7080	26009	2.96%	0.349%
23	6.500	885	888	891	rVB2	349	462	0.05%	0.006%
24	6.604	902	905	907	rBV2	234	292	0.03%	0.004%
25	6.763	921	931	944	rBV	300750	729259	82.86%	9.777%
26	7.013	971	972	974	rBV	509	317	0.04%	0.004%
27	7.128	983	991	1000	rBV6	18650	47665	5.42%	0.639%
28	7.220	1001	1006	1008	rBV2	2738	4884	0.55%	0.065%
29	7.311	1013	1021	1030	rBV	180952	400053	45.45%	5.364%
30	7.665	1076	1079	1081	rBV2	525	410	0.05%	0.005%
31	7.762	1092	1095	1098	rBV2	407	525	0.06%	0.007%
32	7.829	1103	1106	1110	rBV2	348	646	0.07%	0.009%
33	7.964	1121	1128	1135	rBV6	4460	10416	1.18%	0.140%
34	8.262	1170	1177	1178	rBV5	802	1517	0.17%	0.020%
35	8.329	1181	1188	1201	rBV	93155	155329	17.65%	2.083%
36	8.488	1211	1214	1218	rBV2	811	1465	0.17%	0.020%

Data Path : Z:\voasrv\HPCHEM1\MSVOA_X\Data\VX061422\
 Data File : VX029495.D
 Acq On : 15 Jun 2022 02:59
 Operator : JC/MD
 Sample : N3226-16ME
 Misc : 5.75g/5mL/100uL/5.03mL/MSVOA_X/MEOH
 ALS Vial : 40 Sample Multiplier: 1

Instrument :
 MSVOA_X
 ClientSampleId :
 EW4N6ME

Integration Parameters: LSCINT.P

Integrator: RTE
 Smoothing : OFF
 Sampling : 1
 Start Thrs: 0.2
 Stop Thrs : 0

Filtering: 5
 Min Area: 0 % of largest Peak
 Max Peaks: 100
 Peak Location: TOP

If leading or trailing edge < 100 prefer < Baseline drop else tangent >
 Peak separation: 5

Method : Z:\voasrv\HPCHEM1\MSVOA_X\Method\SFAMXML061322WMA.M
 Title : VOC Analysis

37	8.652	1233	1241	1248	rVV	417265	661085	75.11%	8.863%
38	8.854	1270	1274	1275	rVB3	485	387	0.04%	0.005%
39	8.957	1285	1291	1299	rVV	61911	96450	10.96%	1.293%
40	9.116	1313	1317	1321	rVB4	1836	2750	0.31%	0.037%
41	9.274	1339	1343	1350	rVB3	2270	3132	0.36%	0.042%
42	9.335	1350	1353	1357	rBV	260	471	0.05%	0.006%
43	9.402	1357	1364	1380	rBV	228886	505474	57.43%	6.777%
44	9.543	1383	1387	1395	rVB6	4367	9612	1.09%	0.129%
45	9.616	1395	1399	1404	rBV4	1719	3017	0.34%	0.040%
46	9.719	1412	1416	1420	rBV3	2905	3766	0.43%	0.050%
47	9.841	1435	1436	1439	rVB2	517	265	0.03%	0.004%
48	10.055	1465	1471	1482	rBV	600578	839287	95.36%	11.253%
49	10.195	1492	1494	1498	rBV2	1308	1717	0.20%	0.023%
50	10.305	1508	1512	1517	rVB2	5104	6557	0.74%	0.088%
51	10.366	1518	1522	1525	rVB4	886	1362	0.15%	0.018%
52	10.414	1528	1530	1532	rBV2	286	278	0.03%	0.004%
53	10.591	1555	1559	1561	rBV3	368	415	0.05%	0.006%
54	10.646	1564	1568	1572	rBV3	3843	5992	0.68%	0.080%
55	10.786	1586	1591	1594	rVB5	1231	1830	0.21%	0.025%
56	10.853	1599	1602	1606	rBV3	586	878	0.10%	0.012%
57	10.896	1606	1609	1617	rVB4	633	1196	0.14%	0.016%
58	10.969	1617	1621	1625	rBV4	1475	2043	0.23%	0.027%
59	11.036	1627	1632	1635	rBV4	662	1269	0.14%	0.017%
60	11.085	1638	1640	1642	rBV3	1311	1303	0.15%	0.017%
61	11.195	1653	1658	1670	rVB	336352	463701	52.68%	6.217%
62	11.384	1686	1689	1695	rVB4	1648	2737	0.31%	0.037%
63	11.432	1695	1697	1698	rBV	658	486	0.06%	0.007%
64	11.481	1698	1705	1710	rVV5	5115	8382	0.95%	0.112%
65	11.621	1724	1728	1730	rBV2	1487	2323	0.26%	0.031%
66	11.682	1735	1738	1740	rBV2	1385	1405	0.16%	0.019%
67	11.719	1740	1744	1747	rVV3	1555	2221	0.25%	0.030%
68	11.756	1747	1750	1758	rVB3	5633	7773	0.88%	0.104%
69	11.847	1761	1765	1768	rBV4	833	1213	0.14%	0.016%
70	11.896	1771	1773	1774	rVB2	647	358	0.04%	0.005%
71	11.932	1777	1779	1783	rBV2	746	900	0.10%	0.012%
72	12.024	1789	1794	1802	rBV	655388	827557	94.03%	11.095%
73	12.225	1825	1827	1830	rBV2	369	311	0.04%	0.004%
74	12.323	1837	1843	1851	rBV	500576	615800	69.97%	8.256%
75	12.426	1857	1860	1865	rBV5	1800	2280	0.26%	0.031%
76	12.530	1875	1877	1880	rBV2	560	707	0.08%	0.009%

Data Path : Z:\voasrv\HPCHEM1\MSVOA_X\Data\VX061422\
Data File : VX029495.D
Acq On : 15 Jun 2022 02:59
Operator : JC/MD
Sample : N3226-16ME
Misc : 5.75g/5mL/100uL/5.03mL/MSVOA_X/MEOH
ALS Vial : 40 Sample Multiplier: 1

Instrument :
MSVOA_X
ClientSampleId :
EW4N6ME

Integration Parameters: LSCINT.P

Integrator: RTE
Smoothing : OFF Filtering: 5
Sampling : 1 Min Area: 0 % of largest Peak
Start Thrs: 0.2 Max Peaks: 100
Stop Thrs : 0 Peak Location: TOP

If leading or trailing edge < 100 prefer < Baseline drop else tangent >
Peak separation: 5

Method : Z:\voasrv\HPCHEM1\MSVOA_X\Method\SFAMXML061322WMA.M
Title : VOC Analysis

77	12.621	1890	1892	1894	rVB3	562	364	0.04%	0.005%
78	12.719	1905	1908	1911	rBV2	642	845	0.10%	0.011%
79	12.761	1912	1915	1921	rVB	1670	2382	0.27%	0.032%
80	12.859	1929	1931	1932	rBV	634	414	0.05%	0.006%
81	12.975	1948	1950	1954	rVB2	822	820	0.09%	0.011%
82	13.097	1968	1970	1973	rBV2	467	454	0.05%	0.006%
83	13.274	1994	1999	2008	rVB6	1882	4970	0.56%	0.067%
84	13.341	2008	2010	2013	rBV2	352	347	0.04%	0.005%
85	13.408	2013	2021	2026	rBV7	3493	6219	0.71%	0.083%
86	13.584	2047	2050	2052	rBV3	696	981	0.11%	0.013%
87	13.639	2058	2059	2064	rVB	520	429	0.05%	0.006%
88	13.780	2077	2082	2087	rBV2	4151	6139	0.70%	0.082%
89	13.938	2104	2108	2109	rBV2	358	516	0.06%	0.007%
90	13.987	2114	2116	2117	rVV2	563	379	0.04%	0.005%
91	14.042	2121	2125	2128	rVB5	1315	2022	0.23%	0.027%
92	14.072	2128	2130	2133	rBV2	375	523	0.06%	0.007%
93	14.133	2137	2140	2143	rVV	2474	3654	0.42%	0.049%
94	14.164	2143	2145	2155	rVB3	4661	6448	0.73%	0.086%
95	14.542	2205	2207	2208	rBV2	522	384	0.04%	0.005%
96	14.560	2208	2210	2215	rVB3	586	834	0.09%	0.011%
97	14.615	2215	2219	2221	rBV4	889	1435	0.16%	0.019%
98	14.639	2221	2223	2227	rVB	3044	3349	0.38%	0.045%
99	14.761	2240	2243	2244	rBV3	1454	1576	0.18%	0.021%
100	15.212	2315	2317	2320	rVB3	1346	1202	0.14%	0.016%

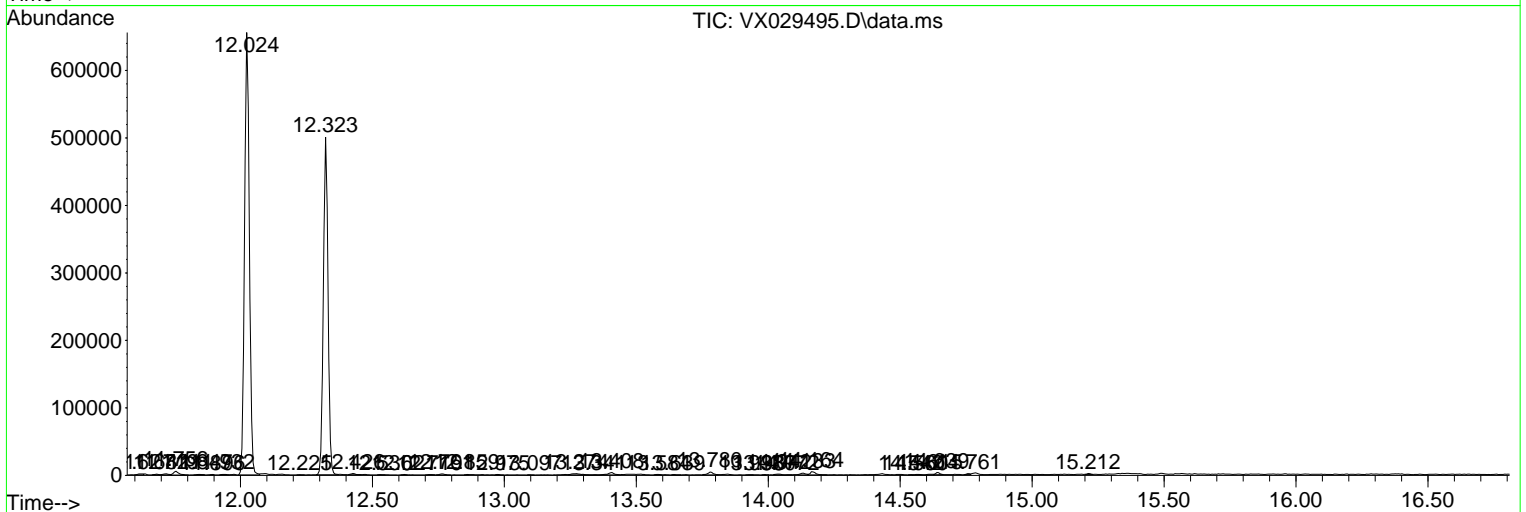
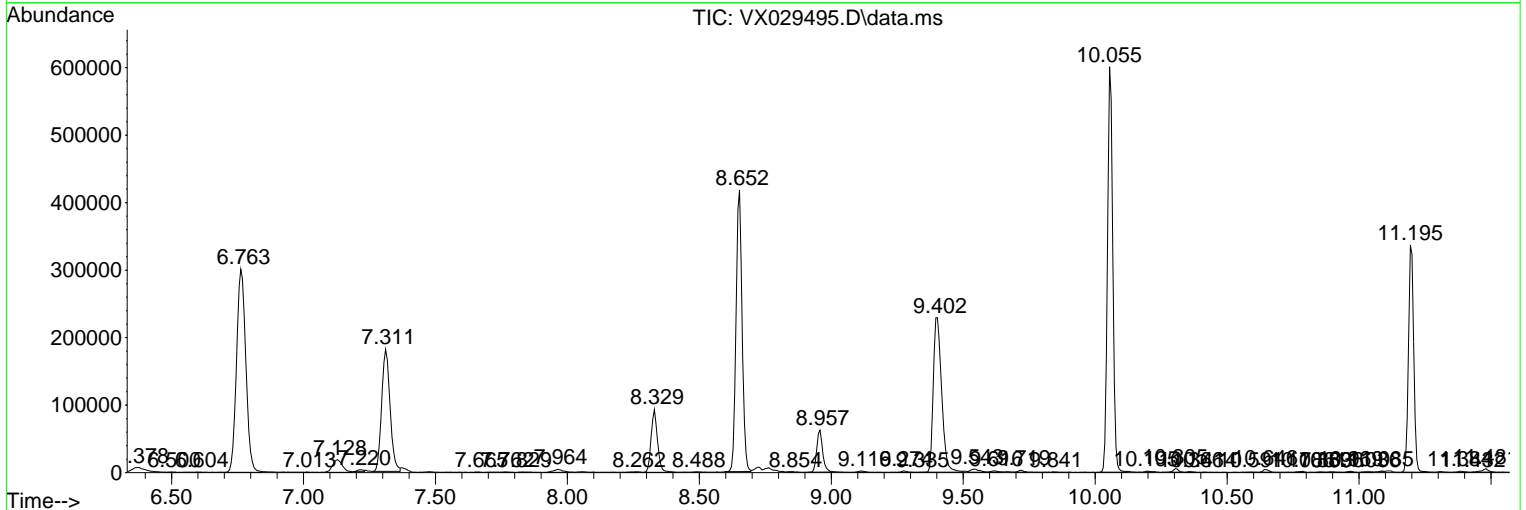
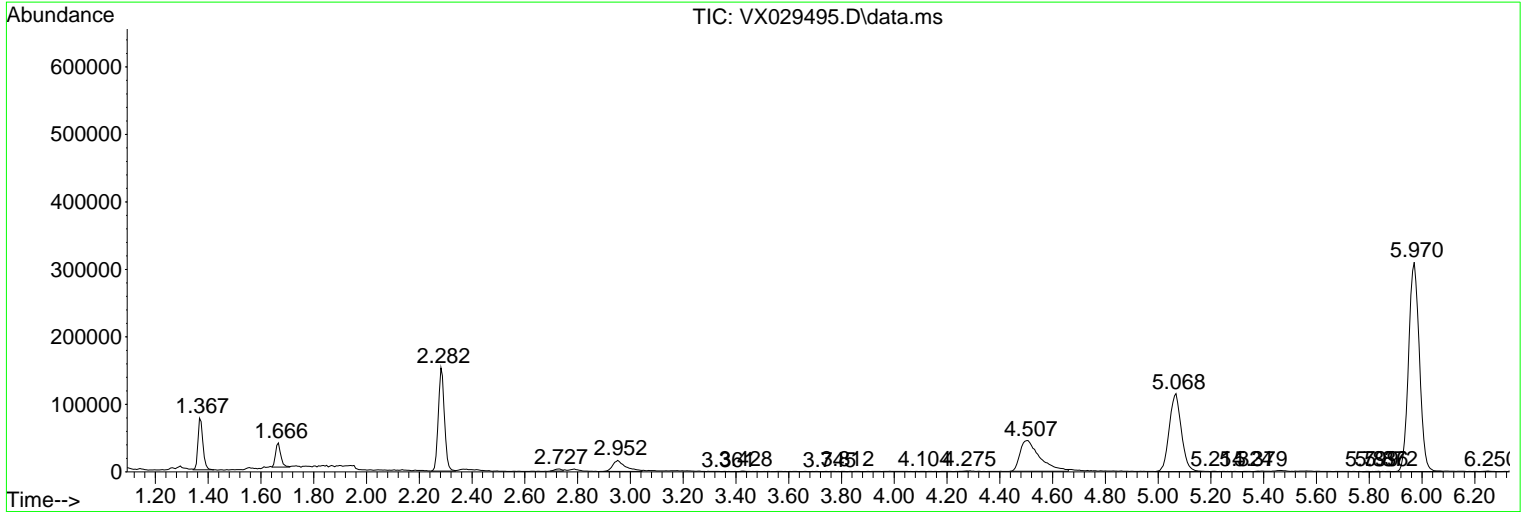
Sum of corrected areas: 7458611

Data Path : Z:\voasrv\HPCHEM1\MSVOA_X\Data\VX061422\
 Data File : VX029495.D
 Acq On : 15 Jun 2022 02:59
 Operator : JC/MD
 Sample : N3226-16ME
 Misc : 5.75g/5mL/100uL/5.03mL/MSVOA_X/MEOH
 ALS Vial : 40 Sample Multiplier: 1

Instrument :
 MSVOA_X
 ClientSampleId :
 EW4N6ME

Quant Method : Z:\voasrv\HPCHEM1\MSVOA_X\Method\SFAMXML061322WMA.M
 Quant Title : VOC Analysis

TIC Library : C:\Database\NIST20.L
 TIC Integration Parameters: LSCINT.P



Library Search Compound Report

Data Path : Z:\voasrv\HPCHEM1\MSVOA_X\Data\VX061422\
Data File : VX029495.D
Acq On : 15 Jun 2022 02:59
Operator : JC/MD
Sample : N3226-16ME
Misc : 5.75g/5mL/100uL/5.03mL/MSVOA_X/MEOH
ALS Vial : 40 Sample Multiplier: 1

Instrument :
MSVOA_X
ClientSampleId :
EW4N6ME

Quant Method : Z:\voasrv\HPCHEM1\MSVOA_X\Method\SFAMXML061322WMA.M
Quant Title : VOC Analysis

TIC Library : C:\Database\NIST20.L
TIC Integration Parameters: LSCINT.P

No Library Search Compounds Detected

Data Path : Z:\voasrv\HPCHEM1\MSVOA_X\Data\VX061422\
Data File : VX029495.D
Acq On : 15 Jun 2022 02:59
Operator : JC/MD
Sample : N3226-16ME
Misc : 5.75g/5mL/100uL/5.03mL/MSVOA_X/MEOH
ALS Vial : 40 Sample Multiplier: 1

Instrument :
MSVOA_X
ClientSampleId :
EW4N6ME

Quant Method : Z:\voasrv\HPCHEM1\MSVOA_X\Method\SFAMXML061322WMA.M
Quant Title : VOC Analysis

TIC Library : C:\Database\NIST20.L
TIC Integration Parameters: LSCINT.P

TIC Top Hit name	RT	EstConc	Units	Response	--Internal Standard--			
					#	RT	Resp	Conc
