

Data Path : Z:\voasrv\HPCHEM1\MSVOA_X\Data\VX061424\
 Data File : VX041876.D
 Acq On : 14 Jun 2024 14:29
 Operator : JC/MD
 Sample : VSTDIC150
 Misc : 5.0mL/MSVOA_X/WATER
 ALS Vial : 11 Sample Multiplier: 1

Instrument :
 MSVOA_X
 ClientSampleId :
 VSTDIC150

Quant Time: Jun 15 03:41:18 2024
 Quant Method : Z:\voasrv\HPCHEM1\MSVOA_X\Method\624X061424W.M
 Quant Title : METHOD 624 VOLATILE ORGANIC ANALYSIS
 QLast Update : Sat Jun 15 03:37:34 2024
 Response via : Initial Calibration

Compound	R.T.	QIon	Response	Conc	Units	Dev(Min)
Internal Standards						
1) Bromochloromethane	4.904	128	30325	30.000	ug/l	0.00
28) 1,4-Difluorobenzene	6.763	114	177176	30.000	ug/l	0.00
57) Chlorobenzene-d5	10.055	117	167553	30.000	ug/l	0.00
System Monitoring Compounds						
27) 1,2-Dichloroethane-d4	5.958	65	61689	29.551	ug/l	0.00
Spiked Amount	30.000	Range 91 - 110	Recovery	=	98.500%	
60) 4-Bromofluorobenzene	11.079	95	78474	30.257	ug/l	0.00
Spiked Amount	30.000	Range 63 - 112	Recovery	=	100.867%	
63) Toluene-d8	8.647	98	209845	29.273	ug/l	0.00
Spiked Amount	30.000	Range 91 - 112	Recovery	=	97.567%	
Target Compounds						
						Qvalue
2) Dichlorodifluoromethane	1.166	85	300910	153.290	ug/l	99
3) Chloromethane	1.301	50	332089	151.338	ug/l	98
4) Vinyl Chloride	1.374	62	326855	152.316	ug/l	98
5) Bromomethane	1.599	94	172760	150.603	ug/l	100
6) Chloroethane	1.660	64	133934	146.085	ug/l	99
7) Trichlorofluoromethane	1.868	101	383182	141.788	ug/l	98
8) Diethyl Ether	2.136	74	176231	150.681	ug/l	99
9) 1,1,2-Trichlorotrifluo...	2.313	101	277444	151.013	ug/l	99
10) 1,1-Dichloroethene	2.307	96	284357	153.434	ug/l	97
11) Methyl Iodide	2.441	142	368794	152.893	ug/l	99
12) Methyl Acetate	2.709	43	343682	145.453	ug/l	99
13) Acrolein	2.239	56	373714	784.408	ug/l	99
14) Acrylonitrile	3.075	53	849337	757.339	ug/l	98
15) Acetone	2.398	58	236194	736.227	ug/l	95
16) Carbon Disulfide	2.502	76	709134	174.597	ug/l	100
17) Allyl chloride	2.660	41	423673	150.524	ug/l	99
18) Methylene Chloride	2.782	84	306523	144.195	ug/l	95
19) trans-1,2-Dichloroethene	3.087	96	285120	153.577	ug/l	99
20) Diisopropyl ether	3.770	45	874246	151.112	ug/l	93
21) 1,1-Dichloroethane	3.605	63	501924	151.883	ug/l	99
22) cis-1,2-Dichloroethene	4.489	96	347383	154.575	ug/l	99
23) tert-Butyl Alcohol	3.008	59	355709	808.588	ug/l #	100
24) Methyl tert-Butyl Ether	3.123	73	883120	154.044	ug/l	98
25) Chloroform	5.099	83	507313	151.054	ug/l	99
26) Cyclohexane	5.464	56	443828	154.627	ug/l #	99
29) 1,1-Dichloropropene	5.690	75	361963	156.528	ug/l	97
30) 2-Butanone	4.568	43	1149643	744.049	ug/l	99
31) 2,2-Dichloropropane	4.471	77	392183	154.781	ug/l	100
32) 1,1,1-Trichloroethane	5.379	97	456294	155.735	ug/l	99
33) Carbon Tetrachloride	5.672	117	407058	161.013	ug/l	98
34) Benzene	6.038	78	1151418	149.470	ug/l	99
35) Methacrylonitrile	4.928	41	243414	156.843	ug/l	95
36) 1,2-Dichloroethane	6.086	62	356955	148.744	ug/l	100
37) Trichloroethene	7.123	130	324619	154.278	ug/l	95
38) Methylcyclohexane	7.379	83	480250	156.793	ug/l	98
39) 1,2-Dichloropropane	7.428	63	276956	150.933	ug/l	98
40) Dibromomethane	7.580	93	205575	151.445	ug/l	98
41) Bromodichloromethane	7.824	83	392495	161.400	ug/l	98
42) Vinyl Acetate	3.727	43	3971225	767.852	ug/l	99

Data Path : Z:\voasrv\HPCHEM1\MSVOA_X\Data\VX061424\
 Data File : VX041876.D
 Acq On : 14 Jun 2024 14:29
 Operator : JC/MD
 Sample : VSTDIC150
 Misc : 5.0mL/MSVOA_X/WATER
 ALS Vial : 11 Sample Multiplier: 1

Instrument :
 MSVOA_X
 ClientSampleId :
 VSTDIC150

Quant Time: Jun 15 03:41:18 2024
 Quant Method : Z:\voasrv\HPCHEM1\MSVOA_X\Method\624X061424W.M
 Quant Title : METHOD 624 VOLATILE ORGANIC ANALYSIS
 QLast Update : Sat Jun 15 03:37:34 2024
 Response via : Initial Calibration

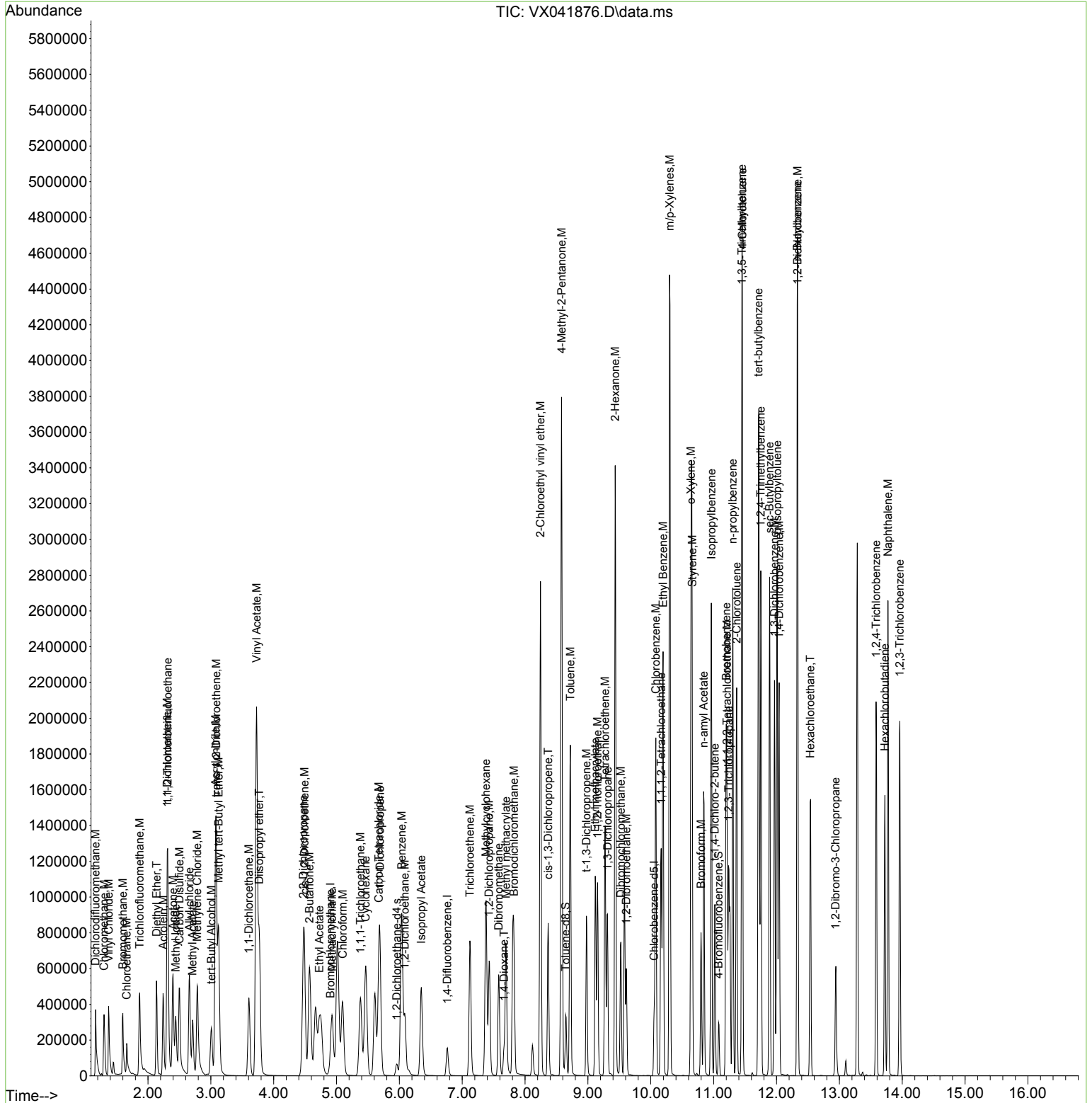
Compound	R.T.	QIon	Response	Conc	Units	Dev(Min)
43) Ethyl Acetate	4.727	43	439286	151.630	ug/l	99
44) Isopropyl Acetate	6.348	43	686855	158.289	ug/l	100
45) 1,4-Dioxane	7.665	88	161609	3003.988	ug/l	99
46) Methyl methacrylate	7.696	41	341635	161.027	ug/l	99
47) n-amyl Acetate	10.842	43	648153	166.433	ug/l	97
48) t-1,3-Dichloropropene	8.976	75	428241	171.034	ug/l	99
49) cis-1,3-Dichloropropene	8.366	75	460966	164.126	ug/l	98
50) 1,1,2-Trichloroethane	9.153	97	297115	150.533	ug/l	98
51) Ethyl methacrylate	9.116	69	506238	161.455	ug/l	99
52) 1,3-Dichloropropane	9.311	76	479536	148.612	ug/l	100
53) Dibromochloromethane	9.525	129	361352	167.295	ug/l	99
54) 1,2-Dibromoethane	9.610	107	320901	154.175	ug/l	100
55) 2-Chloroethyl vinyl ether	8.244	63	1102524	755.446	ug/l	99
56) Bromoform	10.799	173	310844	176.488	ug/l	99
58) 4-Methyl-2-Pentanone	8.580	43	2227491	741.901	ug/l	98
59) 2-Hexanone	9.433	43	1738052	750.011	ug/l	98
61) Tetrachloroethene	9.275	164	309629	146.857	ug/l	98
62) Toluene	8.720	91	1252754	147.752	ug/l	99
64) Chlorobenzene	10.079	112	865732	149.943	ug/l	100
65) 1,1,1,2-Tetrachloroethane	10.165	131	315900	158.423	ug/l	99
66) Ethyl Benzene	10.195	91	1409804	152.087	ug/l	99
67) m/p-Xylenes	10.299	106	1138061	305.226	ug/l	96
68) o-Xylene	10.640	106	567397	152.633	ug/l	97
69) Styrene	10.659	104	978238	157.474	ug/l	99
70) Isopropylbenzene	10.963	105	1414092	151.291	ug/l	98
71) 1,1,2,2-Tetrachloroethane	11.213	83	482437	149.141	ug/l	100
72) 1,2,3-Trichloropropane	11.238	75	554273	199.907	ug/l	89
73) Bromobenzene	11.201	156	419068	153.710	ug/l	99
74) n-propylbenzene	11.305	91	1603399	156.162	ug/l	99
75) 2-Chlorotoluene	11.366	91	984586	151.013	ug/l	99
76) 1,3,5-Trimethylbenzene	11.451	105	1217672	155.503	ug/l	100
77) t-1,4-Dichloro-2-butene	11.018	75	172365	177.835	ug/l	85
78) 4-Chlorotoluene	11.457	91	1128949	155.872	ug/l	99
79) tert-butylbenzene	11.713	119	1289242	155.108	ug/l	99
80) 1,2,4-Trimethylbenzene	11.750	105	1222879	156.318	ug/l	99
81) sec-Butylbenzene	11.890	105	1524360	157.237	ug/l	99
82) p-Isopropyltoluene	12.012	119	1354315	159.415	ug/l	99
83) 1,3-Dichlorobenzene	11.969	146	762539	156.864	ug/l	99
84) 1,4-Dichlorobenzene	12.043	146	766403	158.389	ug/l	100
85) n-Butylbenzene	12.329	91	1118664	170.282	ug/l	99
86) Hexachloroethane	12.536	117	240935	173.660	ug/l	99
87) 1,2-Dichlorobenzene	12.335	146	763300	155.261	ug/l	99
88) 1,2-Dibromo-3-Chloropr...	12.939	75	111827	167.133	ug/l	99
89) 1,2,4-Trichlorobenzene	13.585	180	562192	168.933	ug/l	99
90) Hexachlorobutadiene	13.725	225	262105	159.834	ug/l	98
91) Naphthalene	13.774	128	1652215	164.311	ug/l	100
92) 1,2,3-Trichlorobenzene	13.963	180	564908	163.907	ug/l	99

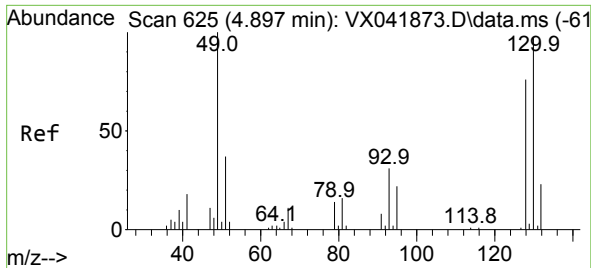
(#) = qualifier out of range (m) = manual integration (+) = signals summed

Data Path : Z:\voasrv\HPCHEM1\MSVOA_X\Data\VX061424\
 Data File : VX041876.D
 Acq On : 14 Jun 2024 14:29
 Operator : JC/MD
 Sample : VSTDIC150
 Misc : 5.0mL/MSVOA_X/WATER
 ALS Vial : 11 Sample Multiplier: 1

Instrument :
 MSVOA_X
 ClientSampleId :
 VSTDIC150

Quant Time: Jun 15 03:41:18 2024
 Quant Method : Z:\voasrv\HPCHEM1\MSVOA_X\Method\624X061424W.M
 Quant Title : METHOD 624 VOLATILE ORGANIC ANALYSIS
 QLast Update : Sat Jun 15 03:37:34 2024
 Response via : Initial Calibration

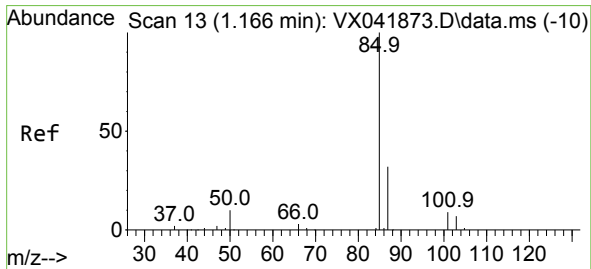
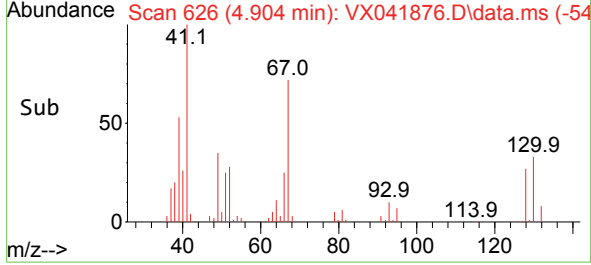
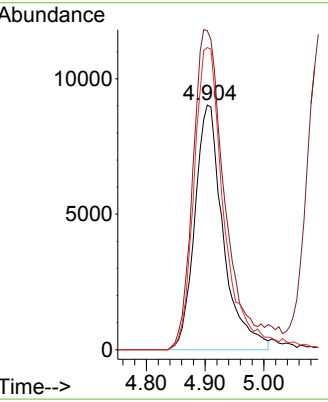
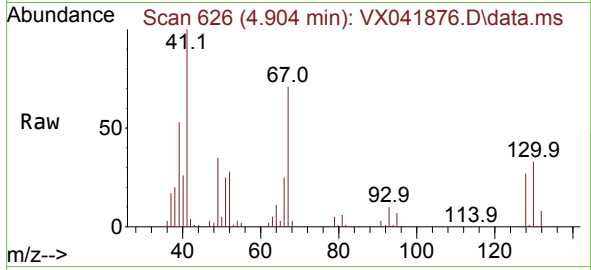




#1
 Bromochloromethane
 Concen: 30.000 ug/l
 RT: 4.904 min Scan# 61
 Delta R.T. 0.007 min
 Lab File: VX041876.D
 Acq: 14 Jun 2024 14:29

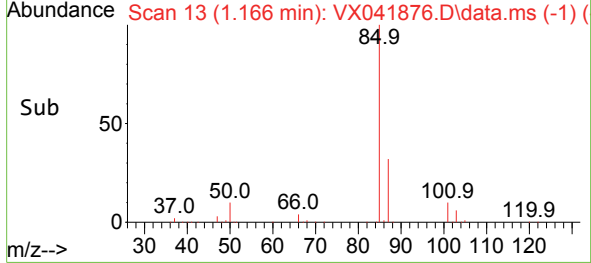
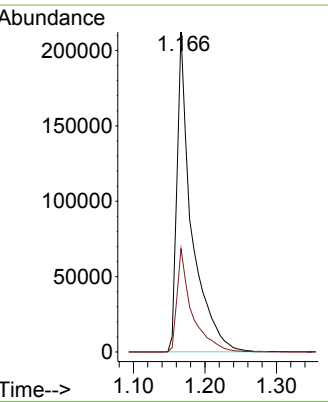
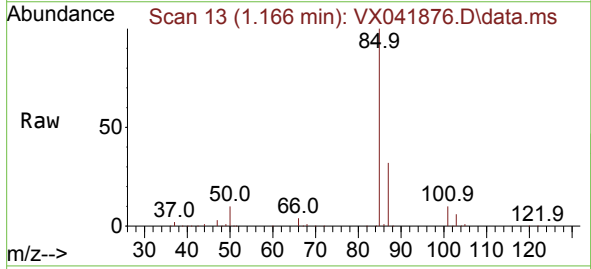
Instrument : MSVOA_X
 ClientSampleId : VSTDICC150

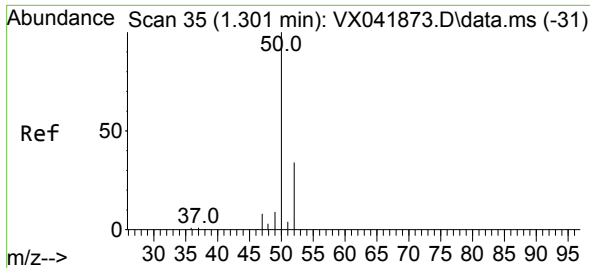
Tgt Ion	Resp	Lower	Upper
128	100		
49	143.3	0.0	338.5
130	129.9	0.0	324.5



#2
 Dichlorodifluoromethane
 Concen: 153.290 ug/l
 RT: 1.166 min Scan# 13
 Delta R.T. 0.000 min
 Lab File: VX041876.D
 Acq: 14 Jun 2024 14:29

Tgt Ion	Resp	Lower	Upper
85	100		
87	32.3	15.8	47.3

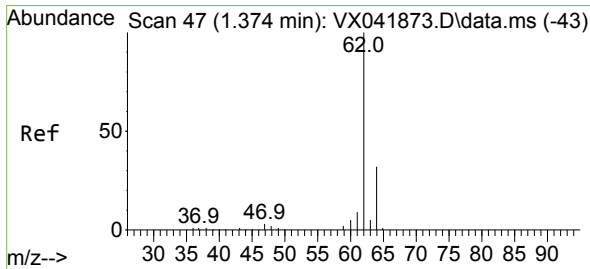
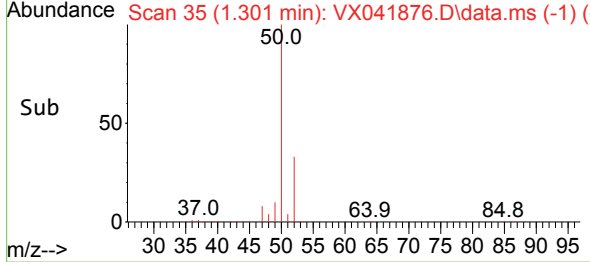
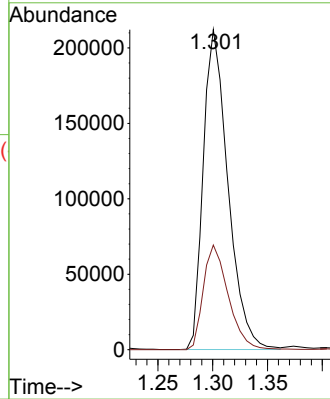
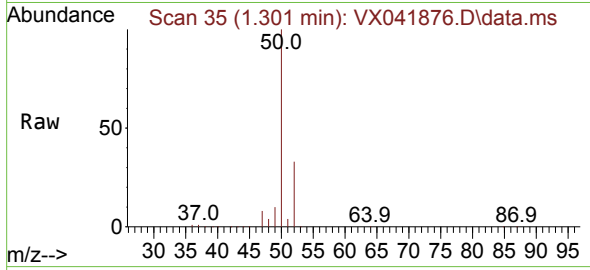




#3
 Chloromethane
 Concen: 151.338 ug/l
 RT: 1.301 min Scan# 31
 Delta R.T. 0.000 min
 Lab File: VX041876.D
 Acq: 14 Jun 2024 14:29

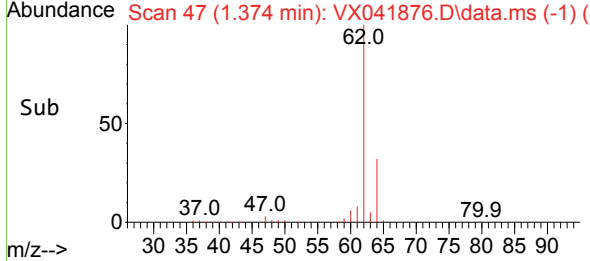
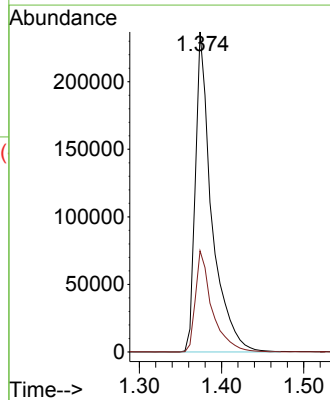
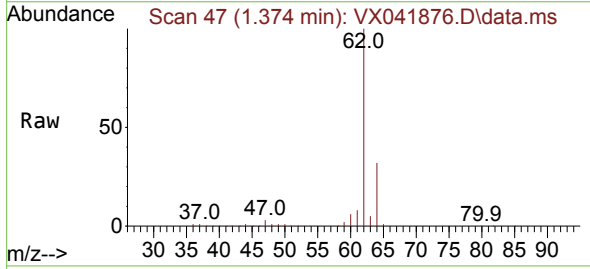
Instrument : MSVOA_X
 ClientSampleId : VSTDICC150

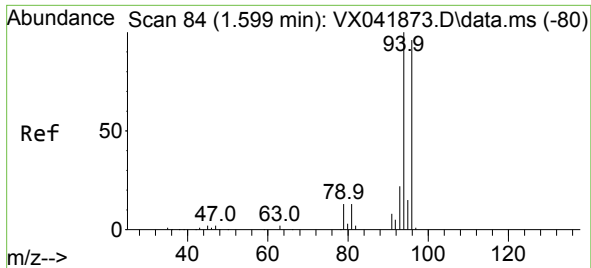
Tgt Ion: 50 Resp: 332089
 Ion Ratio Lower Upper
 50 100
 52 32.7 26.9 40.3



#4
 Vinyl Chloride
 Concen: 152.316 ug/l
 RT: 1.374 min Scan# 47
 Delta R.T. 0.000 min
 Lab File: VX041876.D
 Acq: 14 Jun 2024 14:29

Tgt Ion: 62 Resp: 326855
 Ion Ratio Lower Upper
 62 100
 64 31.6 26.1 39.1

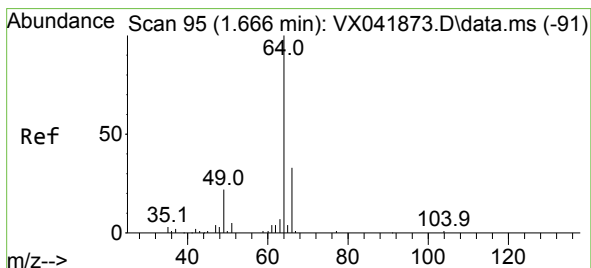
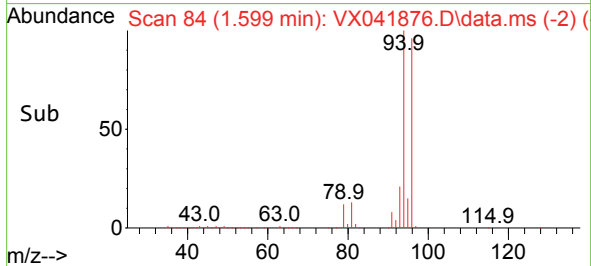
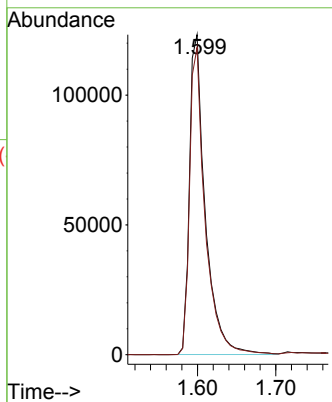
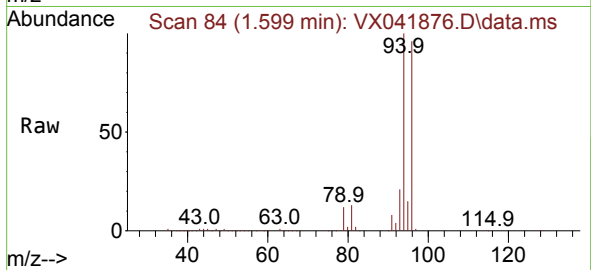




#5
 Bromomethane
 Concen: 150.603 ug/l
 RT: 1.599 min Scan# 84
 Delta R.T. 0.000 min
 Lab File: VX041876.D
 Acq: 14 Jun 2024 14:29

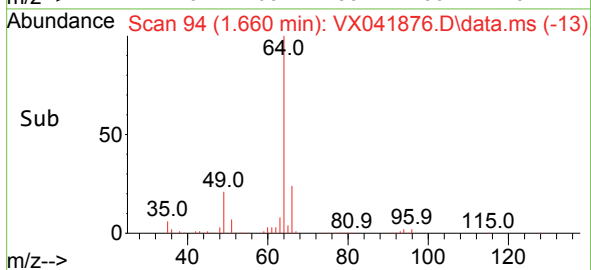
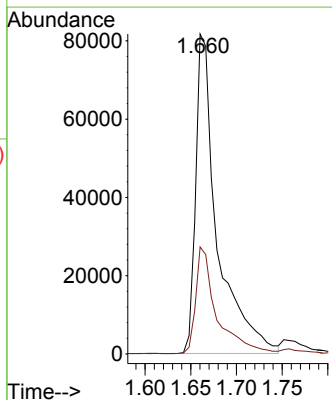
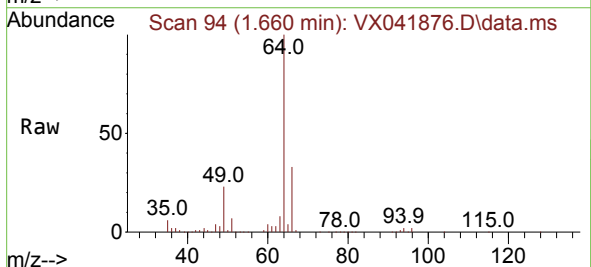
Instrument :
 MSVOA_X
 ClientSampleId :
 VSTDIC150

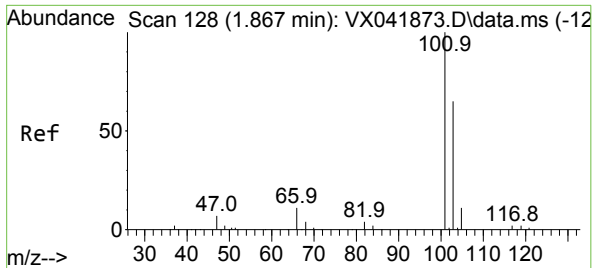
Tgt Ion: 94 Resp: 172760
 Ion Ratio Lower Upper
 94 100
 96 96.0 76.6 115.0



#6
 Chloroethane
 Concen: 146.085 ug/l
 RT: 1.660 min Scan# 94
 Delta R.T. -0.006 min
 Lab File: VX041876.D
 Acq: 14 Jun 2024 14:29

Tgt Ion: 64 Resp: 133934
 Ion Ratio Lower Upper
 64 100
 66 33.3 26.4 39.6

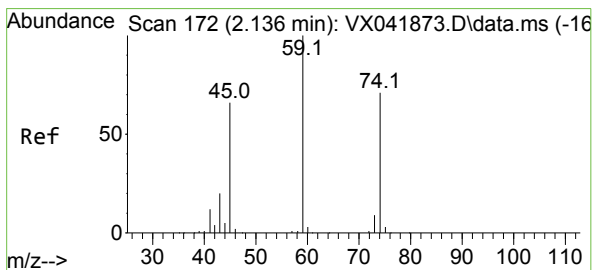
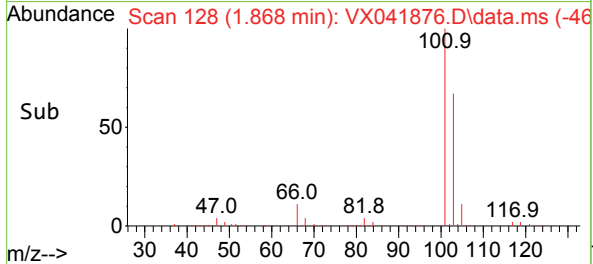
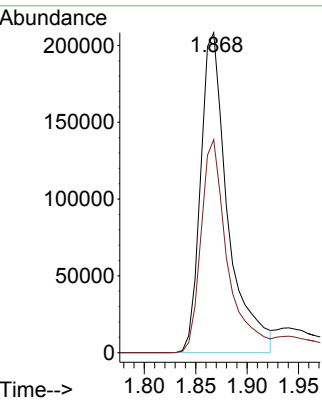
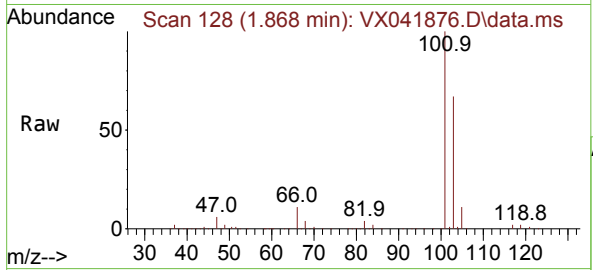




#7
 Trichlorofluoromethane
 Concen: 141.788 ug/l
 RT: 1.868 min Scan# 11
 Delta R.T. 0.000 min
 Lab File: VX041876.D
 Acq: 14 Jun 2024 14:29

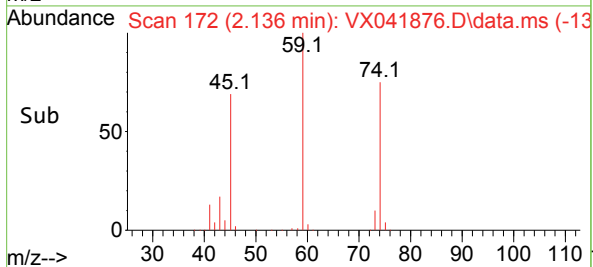
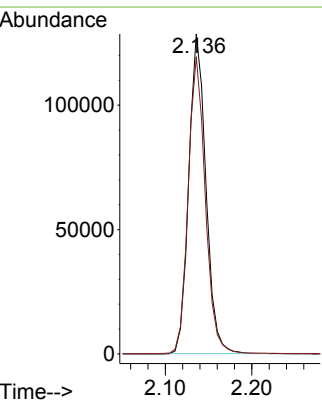
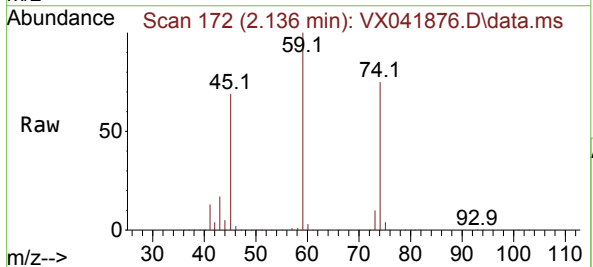
Instrument : MSVOA_X
 ClientSampleId : VSTDICC150

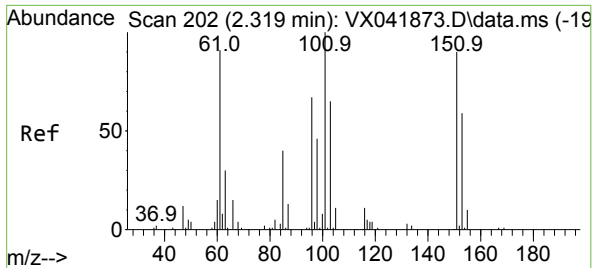
Tgt Ion:101 Resp: 383182
 Ion Ratio Lower Upper
 101 100
 103 66.6 51.8 77.8



#8
 Diethyl Ether
 Concen: 150.681 ug/l
 RT: 2.136 min Scan# 172
 Delta R.T. 0.000 min
 Lab File: VX041876.D
 Acq: 14 Jun 2024 14:29

Tgt Ion: 74 Resp: 176231
 Ion Ratio Lower Upper
 74 100
 45 92.5 18.7 168.7



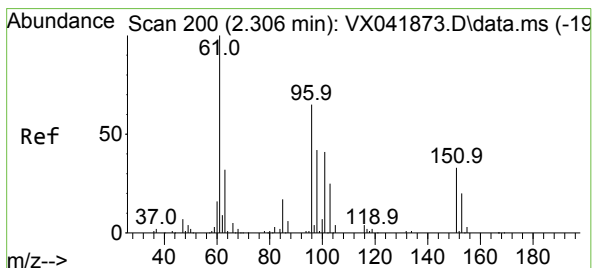
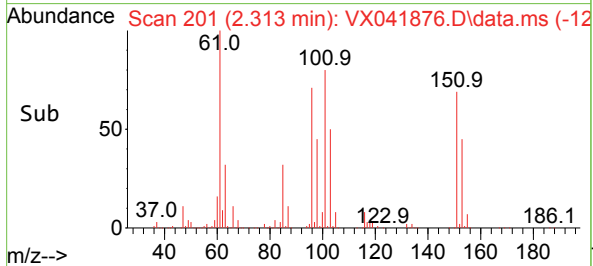
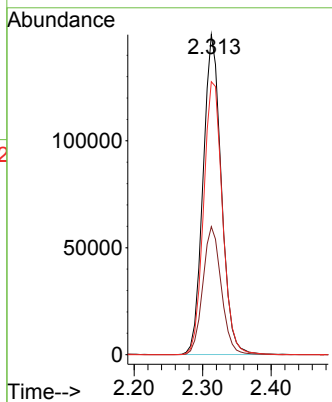
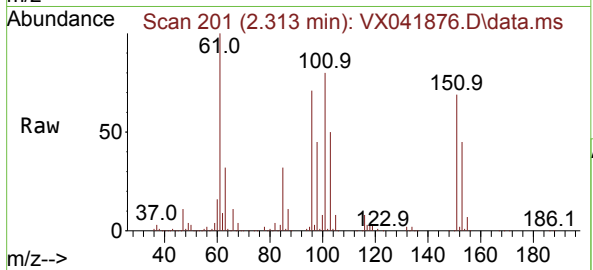


#9
 1,1,2-Trichlorotrifluoroethane
 Concen: 151.013 ug/l
 RT: 2.313 min Scan# 201
 Delta R.T. -0.006 min
 Lab File: VX041876.D
 Acq: 14 Jun 2024 14:29

Instrument : MSVOA_X
 ClientSampleId : VSTDICC150

Tgt Ion:101 Resp: 277444

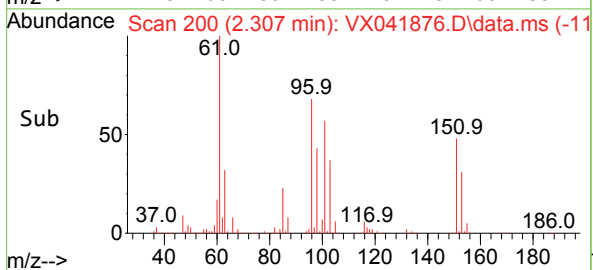
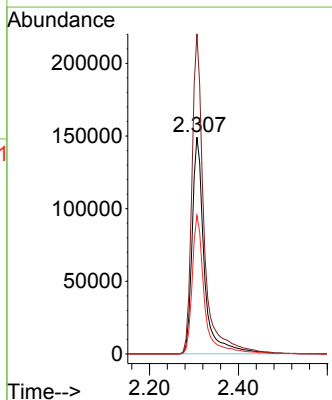
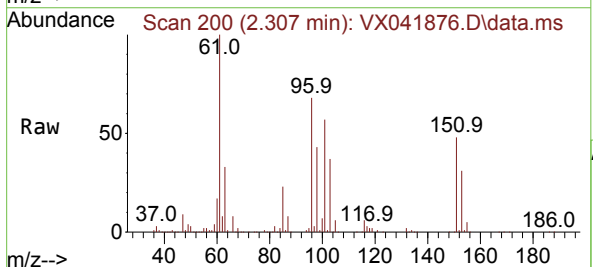
Ion	Ratio	Lower	Upper
101	100		
85	40.4	0.0	80.4
151	88.4	0.0	175.2

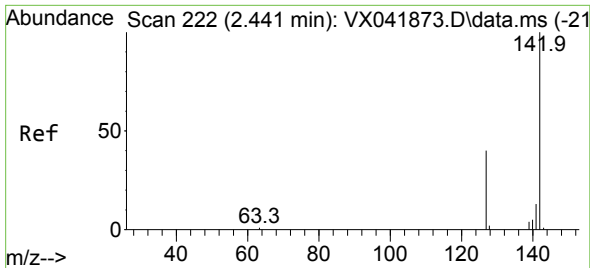


#10
 1,1-Dichloroethene
 Concen: 153.434 ug/l
 RT: 2.307 min Scan# 200
 Delta R.T. 0.000 min
 Lab File: VX041876.D
 Acq: 14 Jun 2024 14:29

Tgt Ion: 96 Resp: 284357

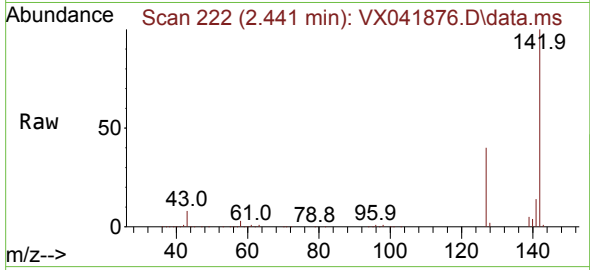
Ion	Ratio	Lower	Upper
96	100		
61	147.8	122.3	183.5
98	64.0	51.5	77.3



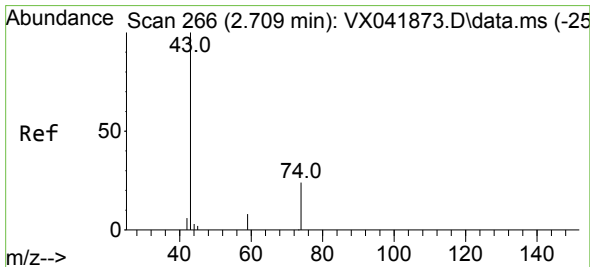
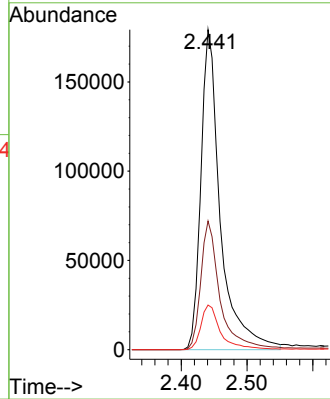
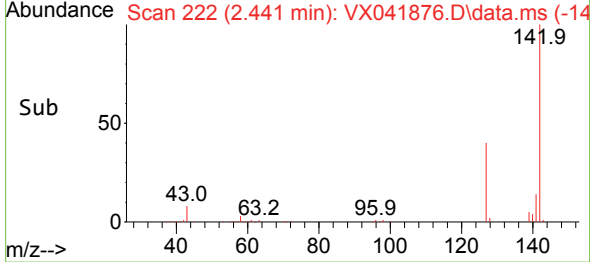


#11
 Methyl Iodide
 Concen: 152.893 ug/l
 RT: 2.441 min Scan# 21
 Delta R.T. 0.000 min
 Lab File: VX041876.D
 Acq: 14 Jun 2024 14:29

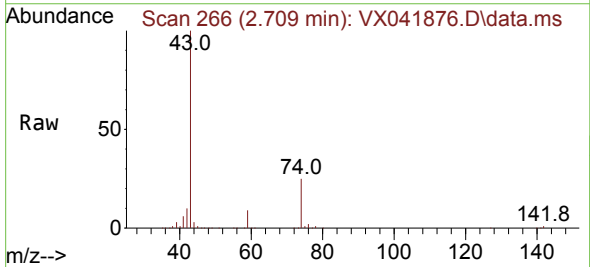
Instrument : MSVOA_X
 ClientSampleId : VSTDIC150



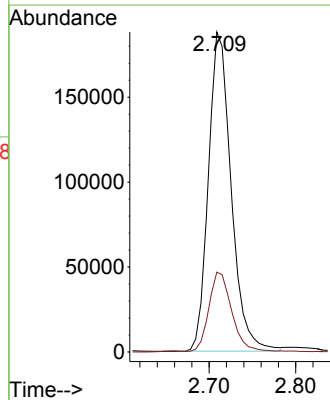
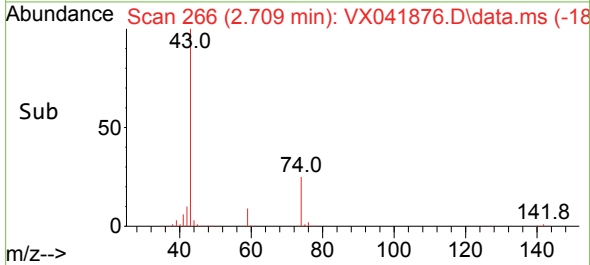
Tgt Ion:142 Resp: 368794
 Ion Ratio Lower Upper
 142 100
 127 40.2 19.8 59.3
 141 14.0 6.7 20.1

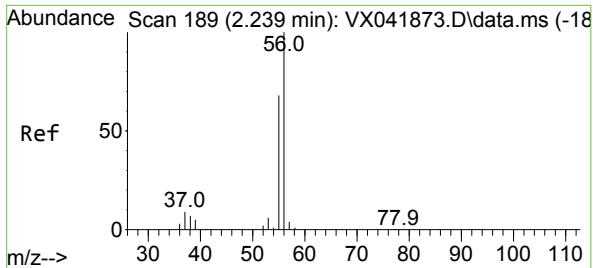


#12
 Methyl Acetate
 Concen: 145.453 ug/l
 RT: 2.709 min Scan# 266
 Delta R.T. 0.000 min
 Lab File: VX041876.D
 Acq: 14 Jun 2024 14:29



Tgt Ion: 43 Resp: 343682
 Ion Ratio Lower Upper
 43 100
 74 24.9 19.4 29.2



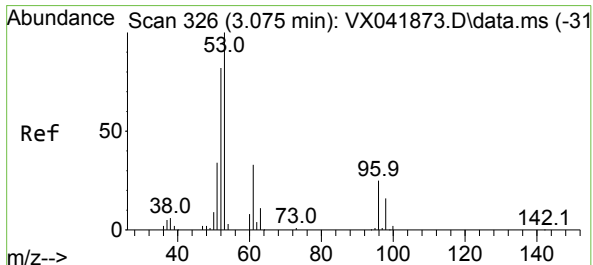
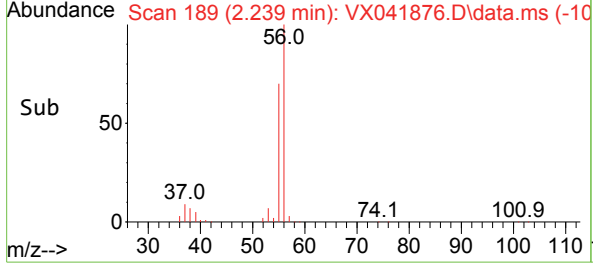
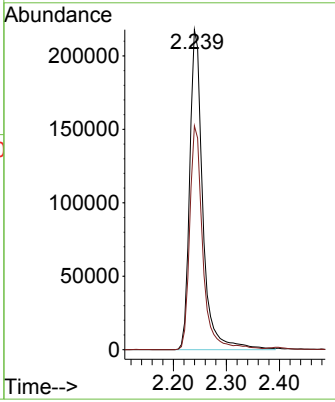
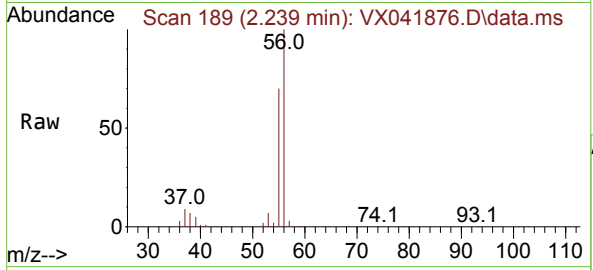


#13
 Acrolein
 Concen: 784.408 ug/l
 RT: 2.239 min Scan# 189
 Delta R.T. 0.000 min
 Lab File: VX041876.D
 Acq: 14 Jun 2024 14:29

Instrument : MSVOA_X
 ClientSampleId : VSTDIC150

Tgt Ion: 56 Resp: 373714

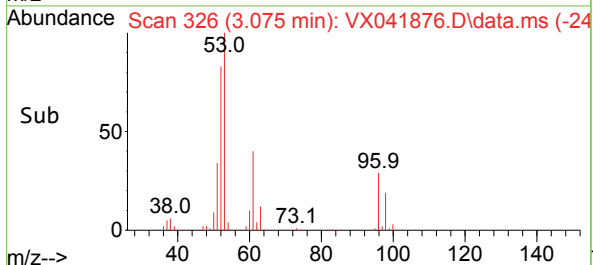
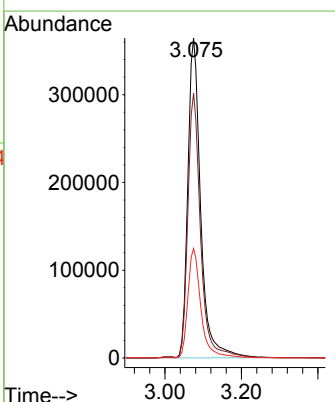
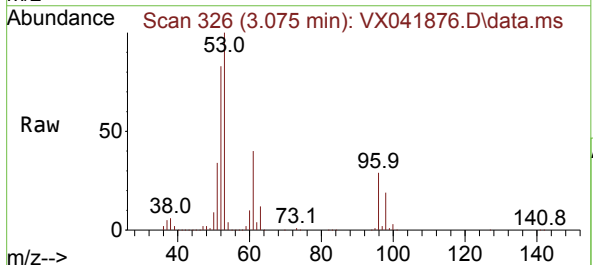
Ion	Ratio	Lower	Upper
56	100		
55	68.3	55.4	83.0

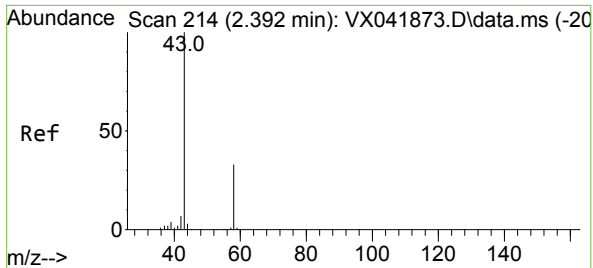


#14
 Acrylonitrile
 Concen: 757.339 ug/l
 RT: 3.075 min Scan# 326
 Delta R.T. 0.000 min
 Lab File: VX041876.D
 Acq: 14 Jun 2024 14:29

Tgt Ion: 53 Resp: 849337

Ion	Ratio	Lower	Upper
53	100		
52	81.9	39.9	119.7
51	34.3	17.4	52.3

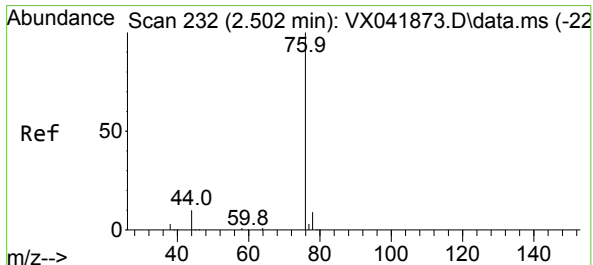
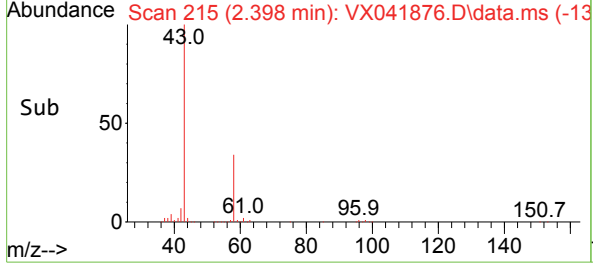
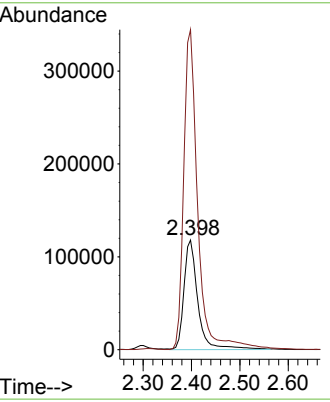
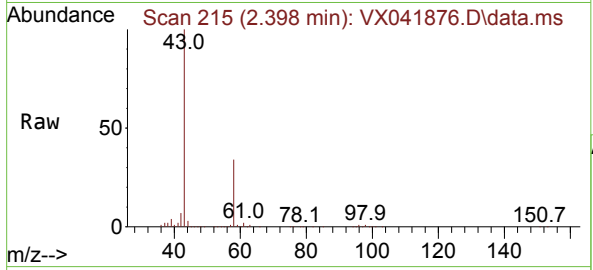




#15
 Acetone
 Concen: 736.227 ug/l
 RT: 2.398 min Scan# 215
 Delta R.T. 0.006 min
 Lab File: VX041876.D
 Acq: 14 Jun 2024 14:29

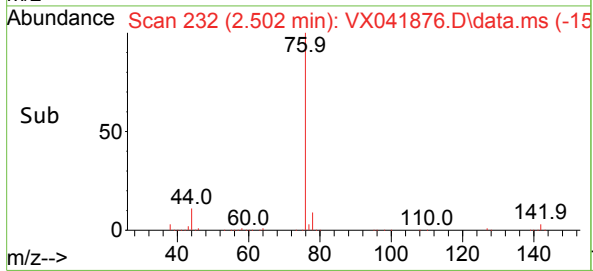
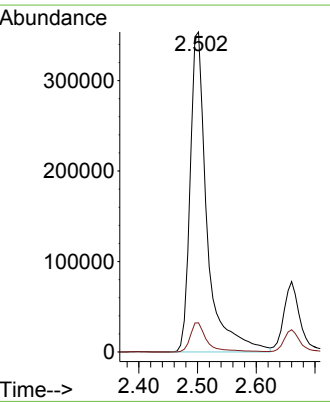
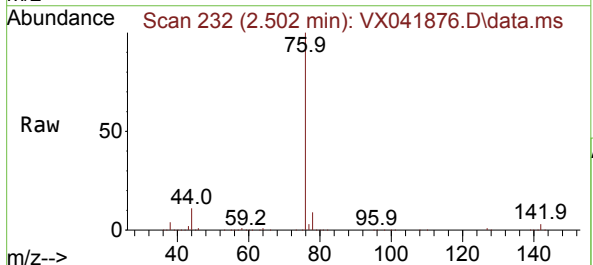
Instrument : MSVOA_X
 ClientSampleId : VSTDIC150

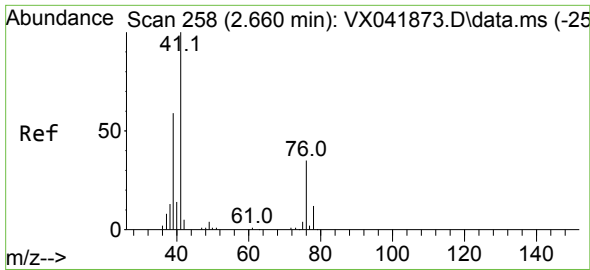
Tgt Ion: 58 Resp: 236194
 Ion Ratio Lower Upper
 58 100
 43 293.4 243.4 365.2



#16
 Carbon Disulfide
 Concen: 174.597 ug/l
 RT: 2.502 min Scan# 232
 Delta R.T. 0.000 min
 Lab File: VX041876.D
 Acq: 14 Jun 2024 14:29

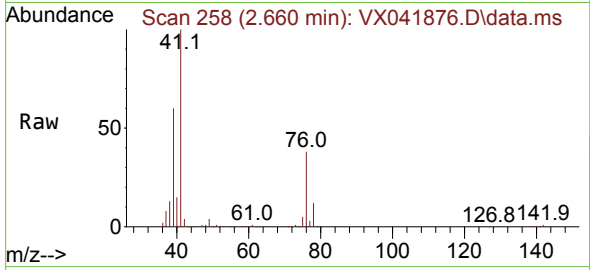
Tgt Ion: 76 Resp: 709134
 Ion Ratio Lower Upper
 76 100
 78 9.1 7.3 10.9



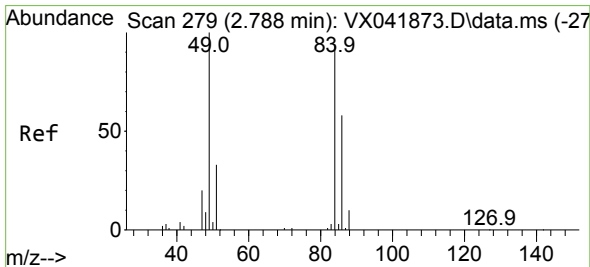
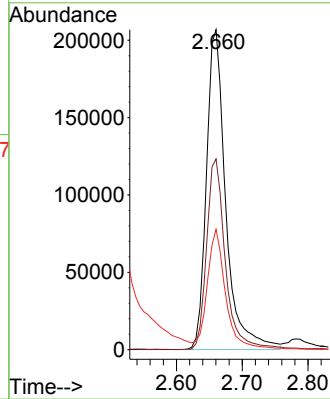
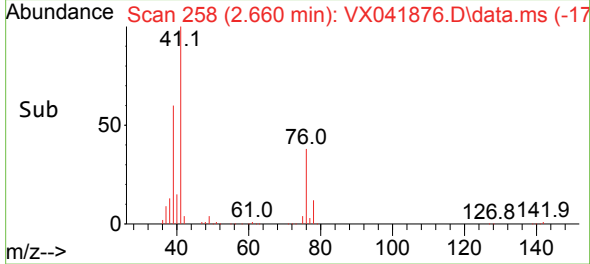


#17
 Allyl chloride
 Concen: 150.524 ug/l
 RT: 2.660 min Scan# 21
 Delta R.T. 0.000 min
 Lab File: VX041876.D
 Acq: 14 Jun 2024 14:29

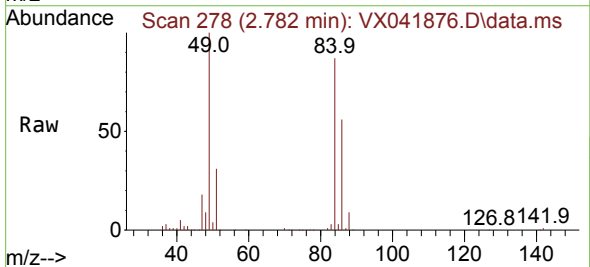
Instrument :
 MSVOA_X
 ClientSampleId :
 VSTDIC150



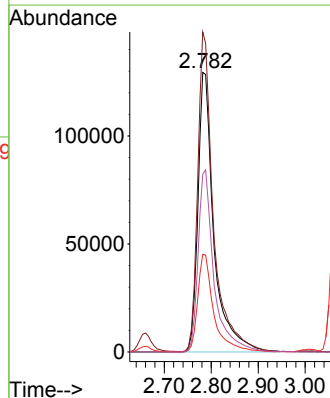
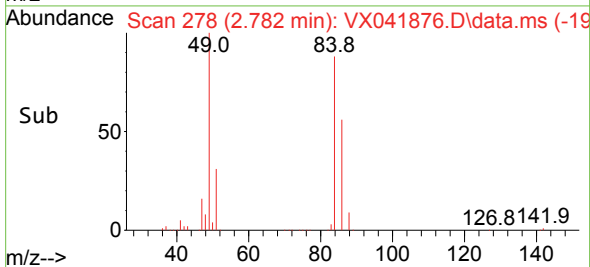
Tgt Ion: 41 Resp: 423673
 Ion Ratio Lower Upper
 41 100
 39 59.6 29.6 88.8
 76 37.1 18.1 54.4

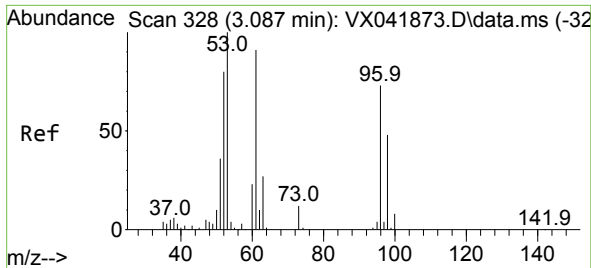


#18
 Methylene Chloride
 Concen: 144.195 ug/l
 RT: 2.782 min Scan# 278
 Delta R.T. -0.006 min
 Lab File: VX041876.D
 Acq: 14 Jun 2024 14:29



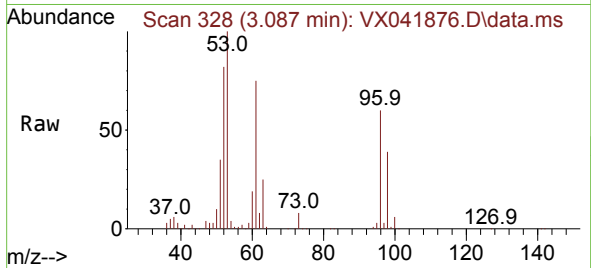
Tgt Ion: 84 Resp: 306523
 Ion Ratio Lower Upper
 84 100
 49 114.4 85.3 127.9
 51 34.9 28.5 42.7
 86 63.6 49.6 74.4



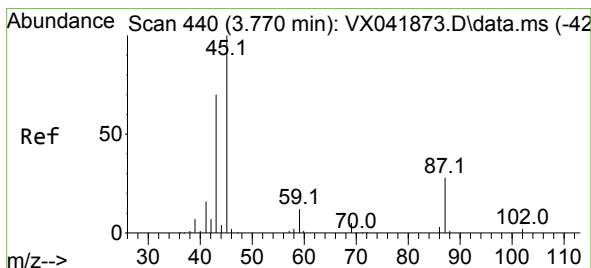
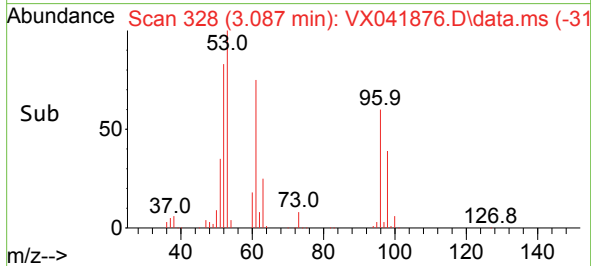
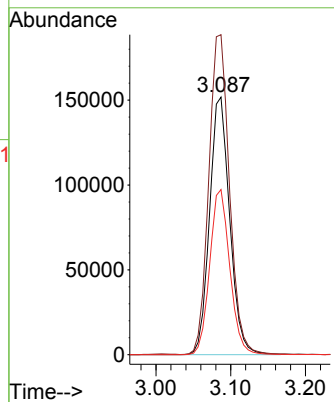


#19
 trans-1,2-Dichloroethene
 Concen: 153.577 ug/l
 RT: 3.087 min Scan# 31
 Delta R.T. 0.000 min
 Lab File: VX041876.D
 Acq: 14 Jun 2024 14:29

Instrument :
 MSVOA_X
 ClientSampleId :
 VSTDIC150

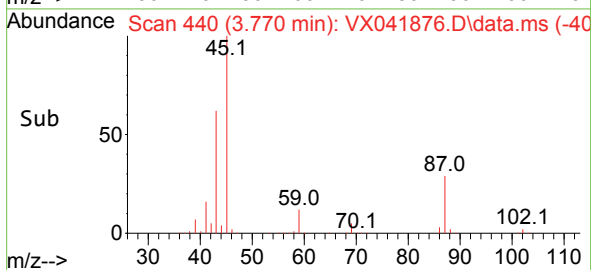
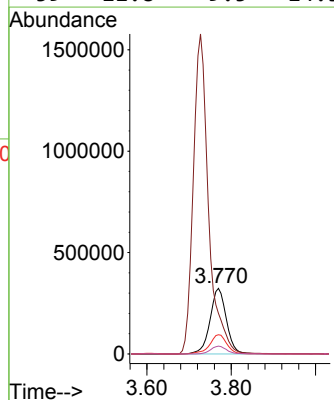
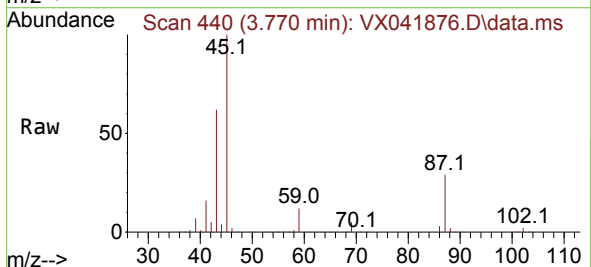


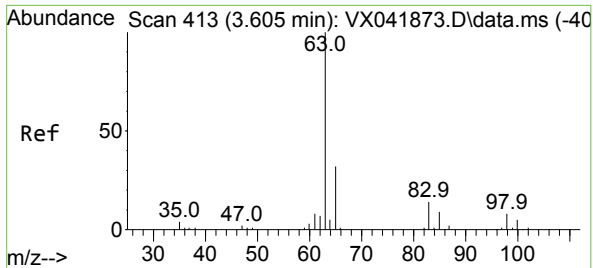
Tgt Ion: 96 Resp: 285120
 Ion Ratio Lower Upper
 96 100
 61 124.1 100.1 150.1
 98 64.1 52.1 78.1



#20
 Diisopropyl ether
 Concen: 151.112 ug/l
 RT: 3.770 min Scan# 440
 Delta R.T. 0.000 min
 Lab File: VX041876.D
 Acq: 14 Jun 2024 14:29

Tgt Ion: 45 Resp: 874246
 Ion Ratio Lower Upper
 45 100
 43 61.4 55.8 83.8
 87 29.3 22.6 34.0
 59 11.8 9.5 14.3



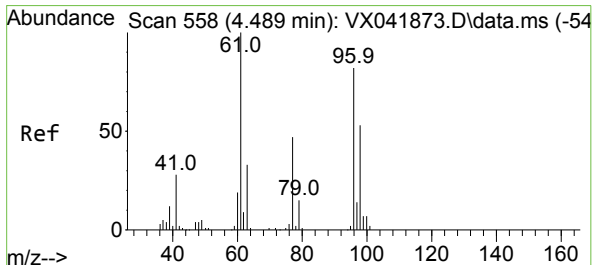
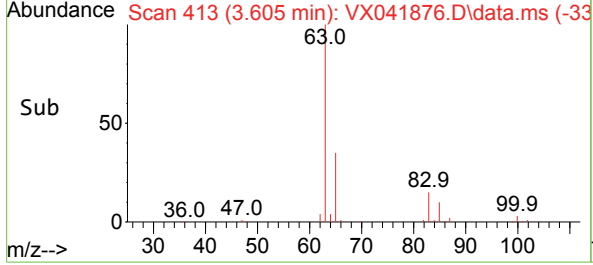
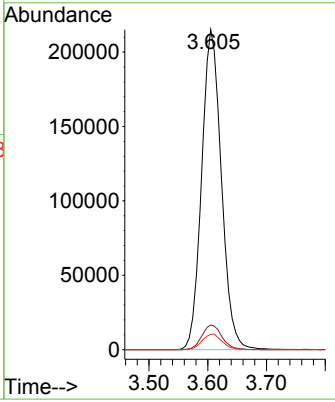
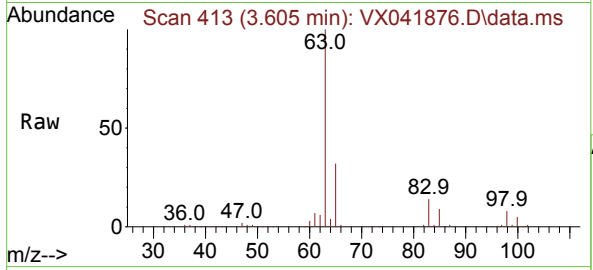


#21
 1,1-Dichloroethane
 Concen: 151.883 ug/l
 RT: 3.605 min Scan# 413
 Delta R.T. 0.000 min
 Lab File: VX041876.D
 Acq: 14 Jun 2024 14:29

Instrument : MSVOA_X
 ClientSampleId : VSTDIC150

Tgt Ion: 63 Resp: 501924

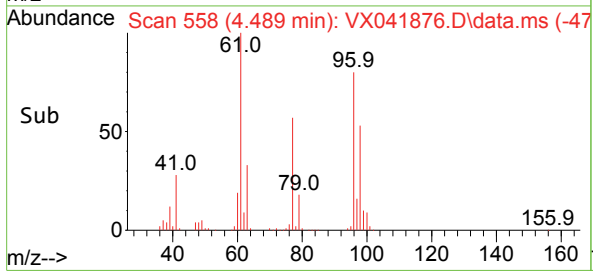
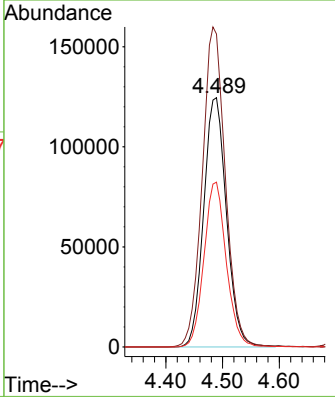
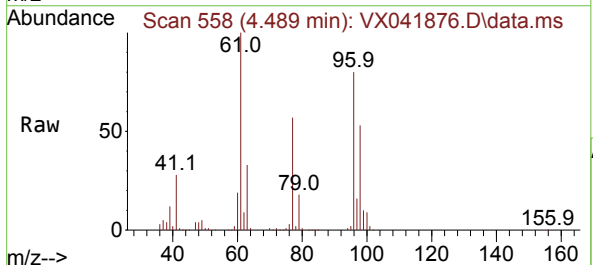
Ion	Ratio	Lower	Upper
63	100		
98	7.7	4.2	12.4
100	4.8	2.5	7.4

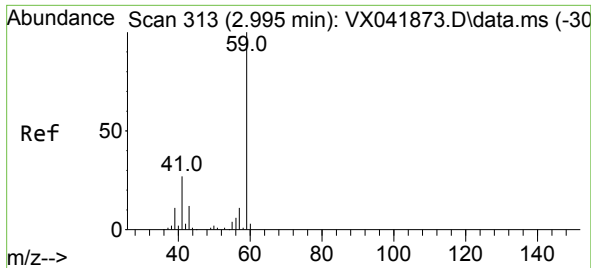


#22
 cis-1,2-Dichloroethene
 Concen: 154.575 ug/l
 RT: 4.489 min Scan# 558
 Delta R.T. 0.000 min
 Lab File: VX041876.D
 Acq: 14 Jun 2024 14:29

Tgt Ion: 96 Resp: 347383

Ion	Ratio	Lower	Upper
96	100		
61	130.2	103.3	154.9
98	64.7	52.2	78.2

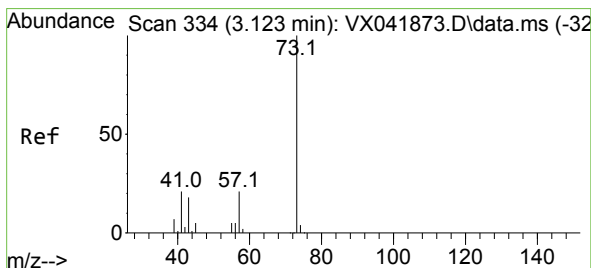
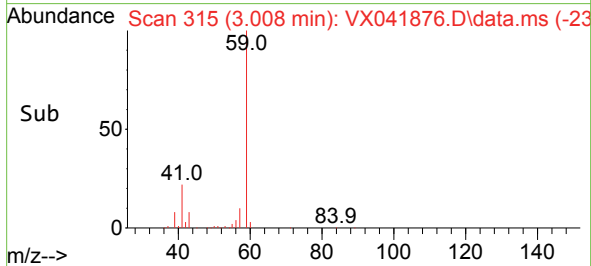
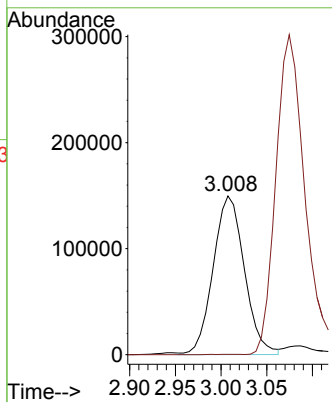
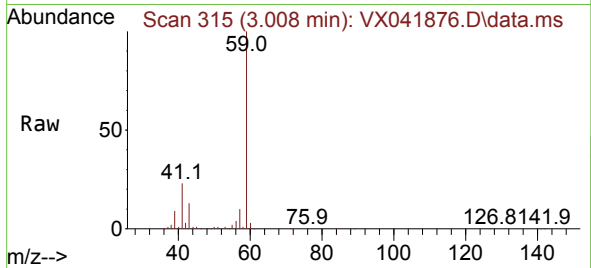




#23
 tert-Butyl Alcohol
 Concen: 808.588 ug/l
 RT: 3.008 min Scan# 313
 Delta R.T. 0.012 min
 Lab File: VX041876.D
 Acq: 14 Jun 2024 14:29

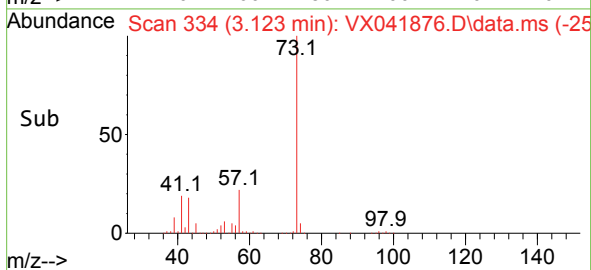
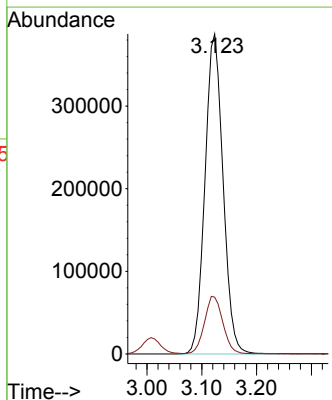
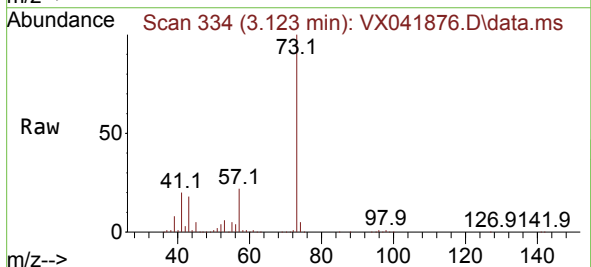
Instrument : MSVOA_X
 ClientSampleId : VSTDIC150

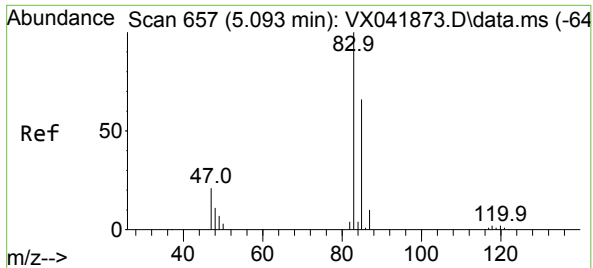
Tgt Ion: 59 Resp: 355709
 Ion Ratio Lower Upper
 59 100
 52 0.2 0.0 0.0#



#24
 Methyl tert-Butyl Ether
 Concen: 154.044 ug/l
 RT: 3.123 min Scan# 334
 Delta R.T. 0.000 min
 Lab File: VX041876.D
 Acq: 14 Jun 2024 14:29

Tgt Ion: 73 Resp: 883120
 Ion Ratio Lower Upper
 73 100
 43 18.2 15.1 22.7

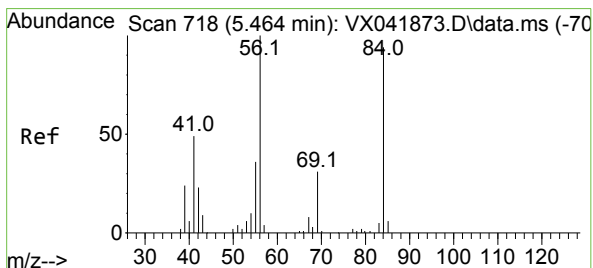
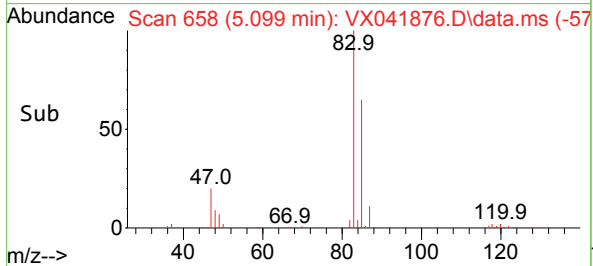
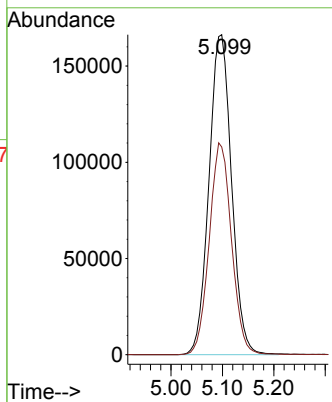
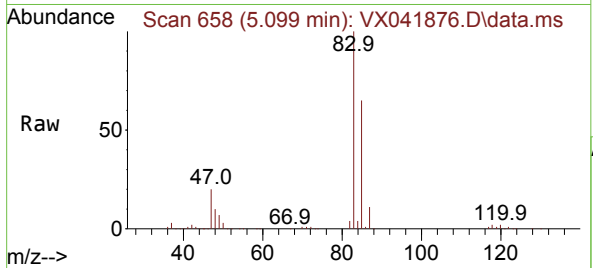




#25
 Chloroform
 Concen: 151.054 ug/l
 RT: 5.099 min Scan# 657
 Delta R.T. 0.006 min
 Lab File: VX041876.D
 Acq: 14 Jun 2024 14:29

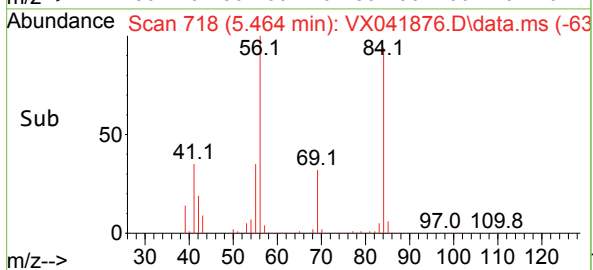
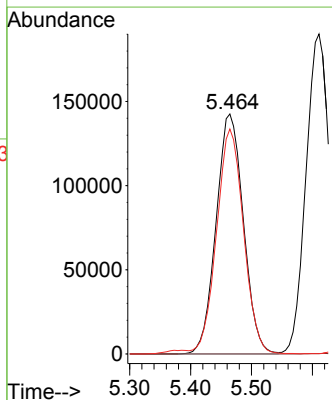
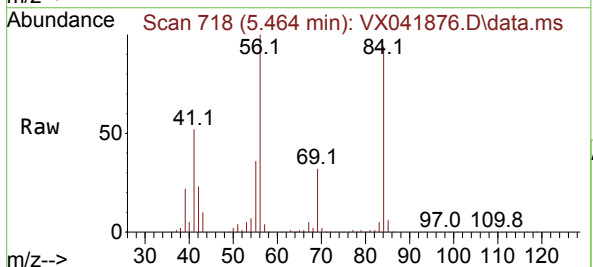
Instrument : MSVOA_X
 ClientSampleId : VSTDIC150

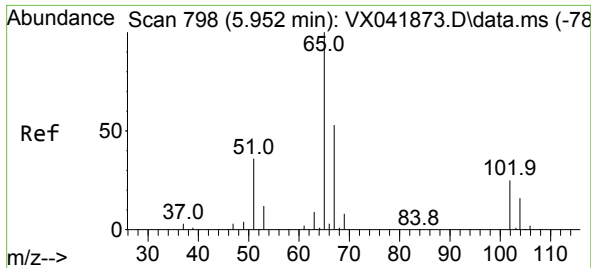
Tgt Ion: 83 Resp: 507313
 Ion Ratio Lower Upper
 83 100
 85 64.9 52.7 79.1



#26
 Cyclohexane
 Concen: 154.627 ug/l
 RT: 5.464 min Scan# 718
 Delta R.T. 0.000 min
 Lab File: VX041876.D
 Acq: 14 Jun 2024 14:29

Tgt Ion: 56 Resp: 443828
 Ion Ratio Lower Upper
 56 100
 89 0.0 0.0 0.0
 84 92.7 73.1 109.7

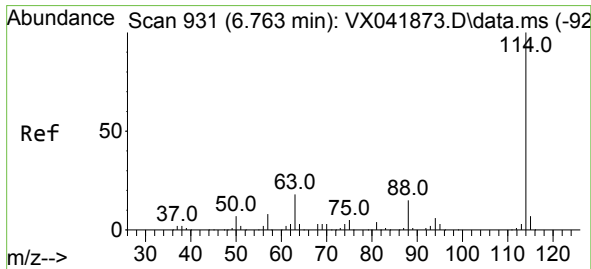
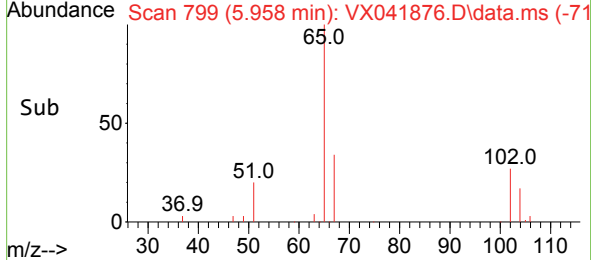
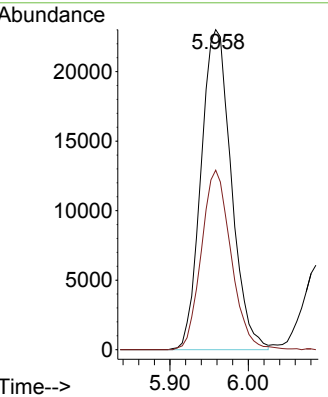
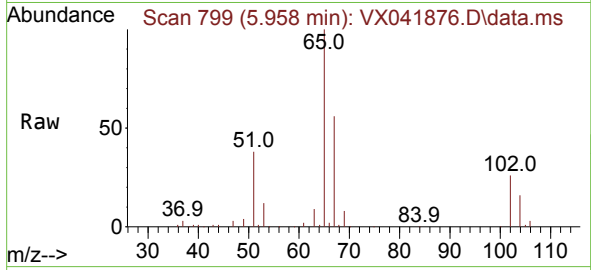




#27
 1,2-Dichloroethane-d4
 Concen: 29.551 ug/l
 RT: 5.958 min Scan# 798
 Delta R.T. 0.006 min
 Lab File: VX041876.D
 Acq: 14 Jun 2024 14:29

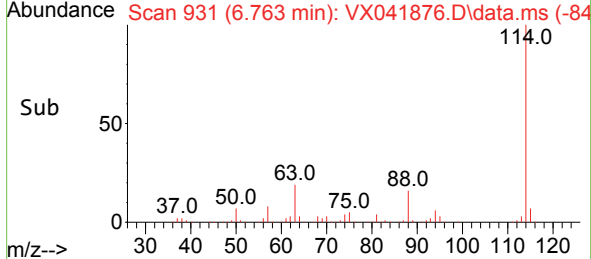
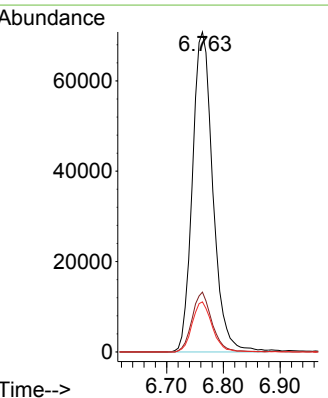
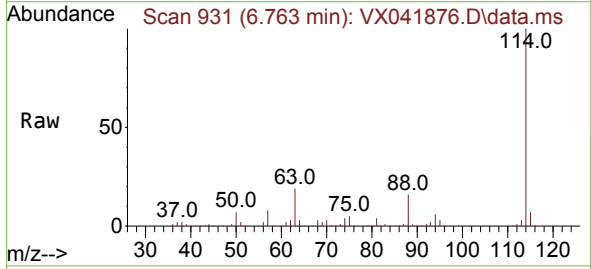
Instrument : MSVOA_X
 ClientSampleId : VSTDIC150

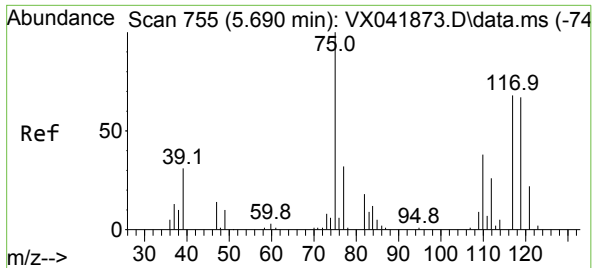
Tgt Ion: 65 Resp: 61689
 Ion Ratio Lower Upper
 65 100
 67 55.0 43.4 65.0



#28
 1,4-Difluorobenzene
 Concen: 30.000 ug/l
 RT: 6.763 min Scan# 931
 Delta R.T. 0.000 min
 Lab File: VX041876.D
 Acq: 14 Jun 2024 14:29

Tgt Ion: 114 Resp: 177176
 Ion Ratio Lower Upper
 114 100
 63 18.0 14.6 21.8
 88 15.2 11.8 17.8



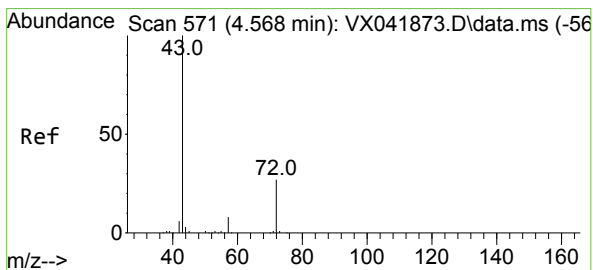
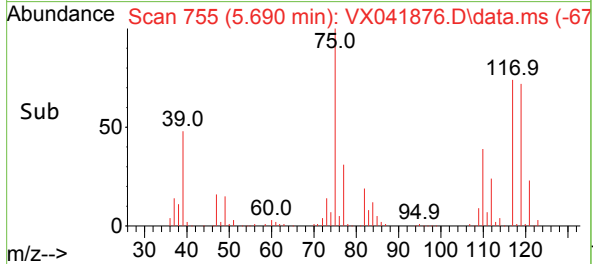
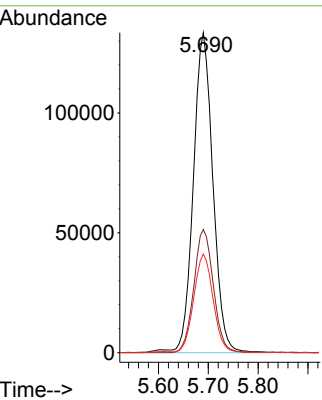
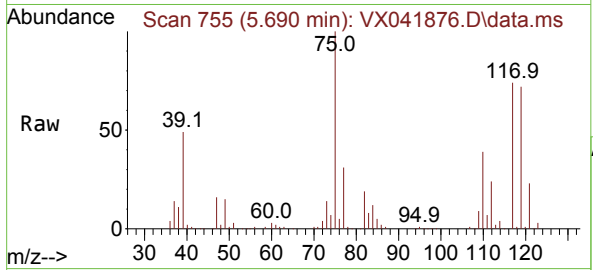


#29
 1,1-Dichloropropene
 Concen: 156.528 ug/l
 RT: 5.690 min Scan# 751
 Delta R.T. 0.000 min
 Lab File: VX041876.D
 Acq: 14 Jun 2024 14:29

Instrument : MSVOA_X
 ClientSampleId : VSTDIC150

Tgt Ion: 75 Resp: 361963

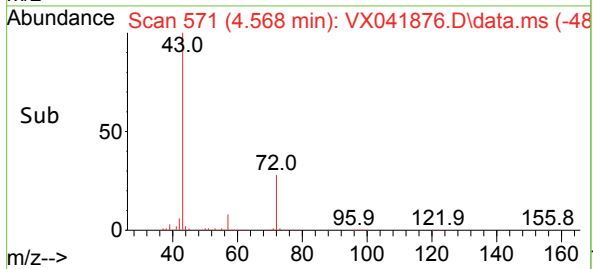
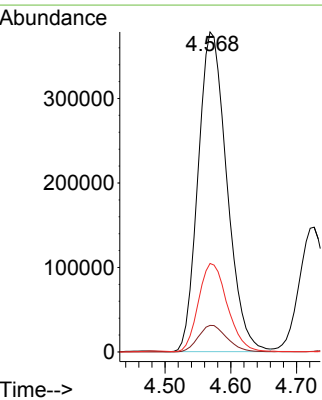
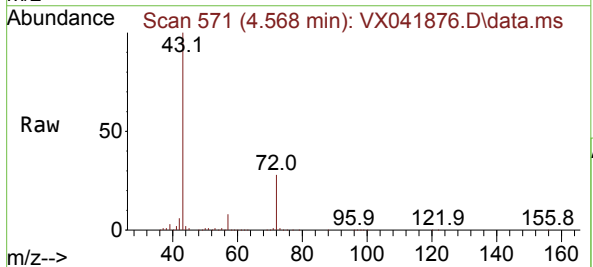
Ion	Ratio	Lower	Upper
75	100		
110	38.6	0.0	80.2
77	30.7	0.0	65.2

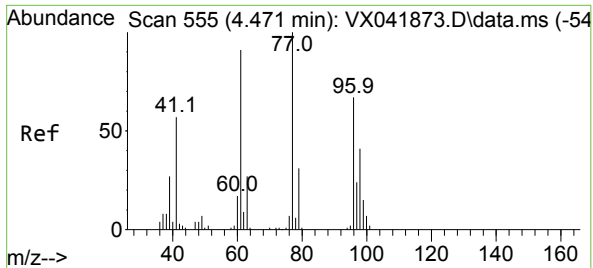


#30
 2-Butanone
 Concen: 744.049 ug/l
 RT: 4.568 min Scan# 571
 Delta R.T. 0.000 min
 Lab File: VX041876.D
 Acq: 14 Jun 2024 14:29

Tgt Ion: 43 Resp: 1149643

Ion	Ratio	Lower	Upper
43	100		
57	8.4	6.5	9.7
72	27.8	22.0	33.0

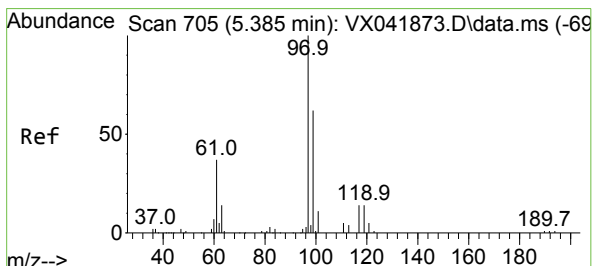
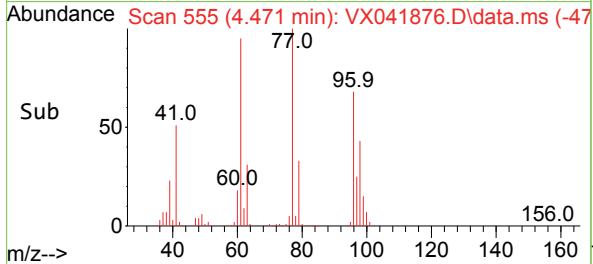
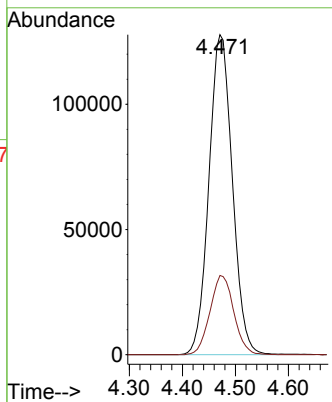
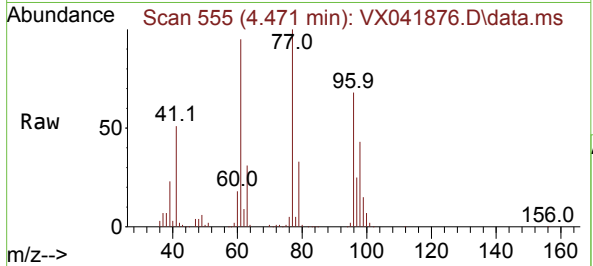




#31
 2,2-Dichloropropane
 Concen: 154.781 ug/l
 RT: 4.471 min Scan# 511
 Delta R.T. 0.000 min
 Lab File: VX041876.D
 Acq: 14 Jun 2024 14:29

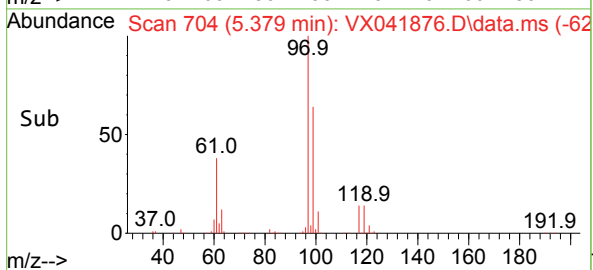
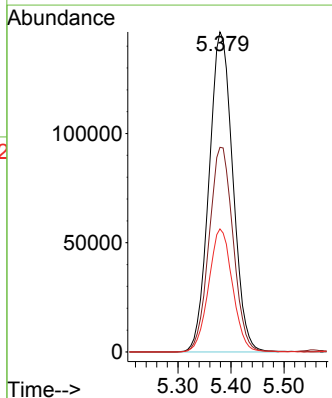
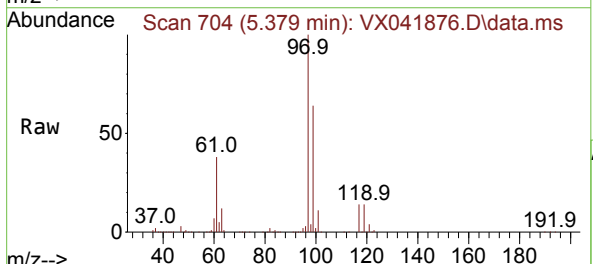
Instrument :
 MSVOA_X
 ClientSampleId :
 VSTDIC150

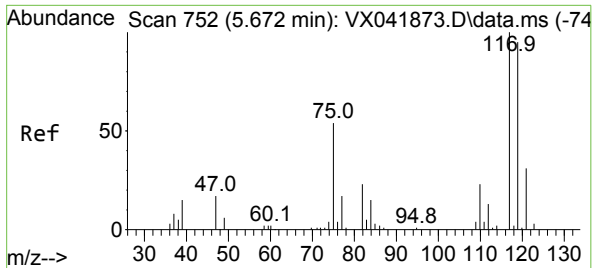
Tgt Ion: 77 Resp: 392183
 Ion Ratio Lower Upper
 77 100
 97 25.2 20.2 30.2



#32
 1,1,1-Trichloroethane
 Concen: 155.735 ug/l
 RT: 5.379 min Scan# 704
 Delta R.T. -0.006 min
 Lab File: VX041876.D
 Acq: 14 Jun 2024 14:29

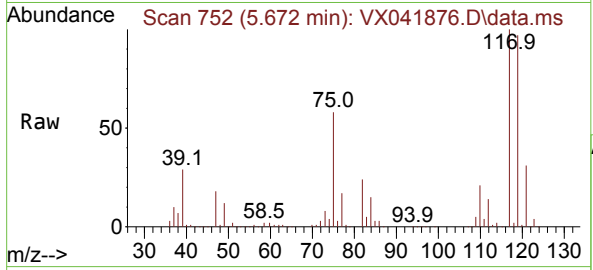
Tgt Ion: 97 Resp: 456294
 Ion Ratio Lower Upper
 97 100
 99 64.8 52.0 78.0
 61 38.5 31.7 47.5





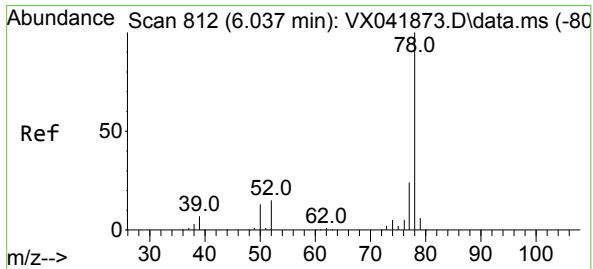
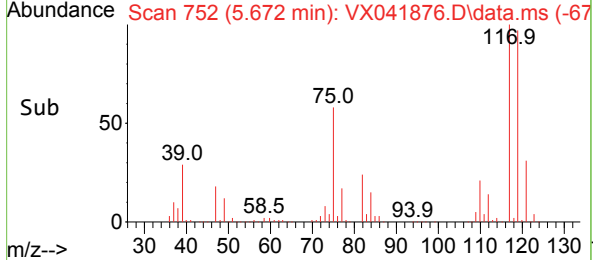
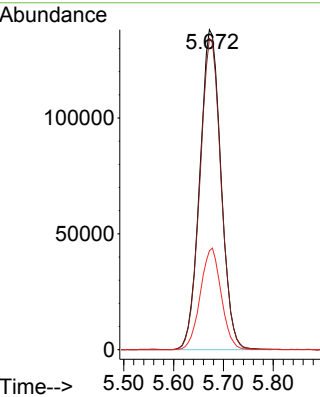
#33
 Carbon Tetrachloride
 Concen: 161.013 ug/l
 RT: 5.672 min Scan# 752
 Delta R.T. 0.000 min
 Lab File: VX041876.D
 Acq: 14 Jun 2024 14:29

Instrument : MSVOA_X
 ClientSampleId : VSTDIC150



Tgt Ion: 117 Resp: 407058

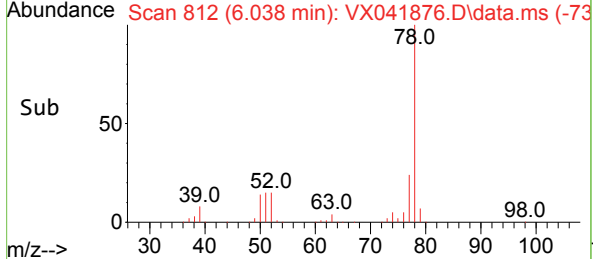
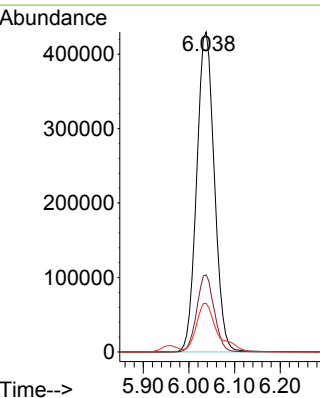
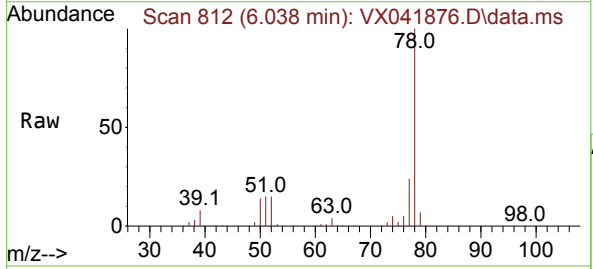
Ion	Ratio	Lower	Upper
117	100		
119	97.3	75.7	113.5
121	30.9	24.9	37.3

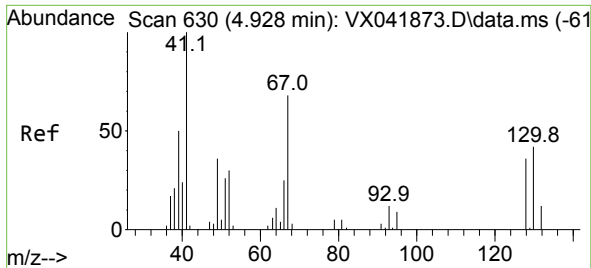


#34
 Benzene
 Concen: 149.470 ug/l
 RT: 6.038 min Scan# 812
 Delta R.T. 0.000 min
 Lab File: VX041876.D
 Acq: 14 Jun 2024 14:29

Tgt Ion: 78 Resp: 1151418

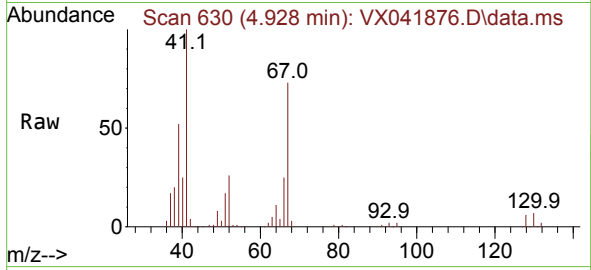
Ion	Ratio	Lower	Upper
78	100		
77	24.1	18.9	28.3
51	15.2	11.8	17.8





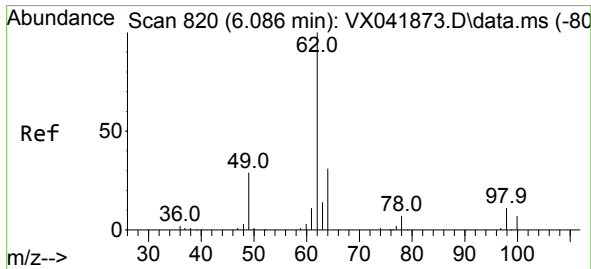
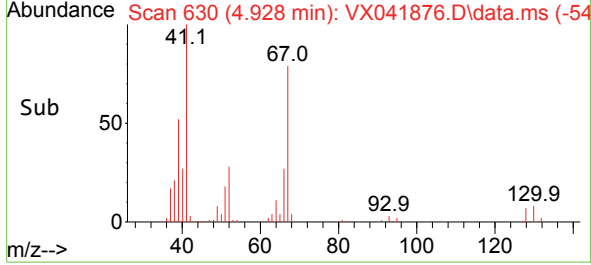
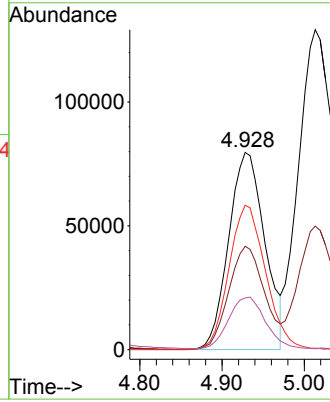
#35
 Methacrylonitrile
 Concen: 156.843 ug/l
 RT: 4.928 min Scan# 61
 Delta R.T. 0.000 min
 Lab File: VX041876.D
 Acq: 14 Jun 2024 14:29

Instrument :
 MSVOA_X
 ClientSampleId :
 VSTDICC150



Tgt Ion: 41 Resp: 243414

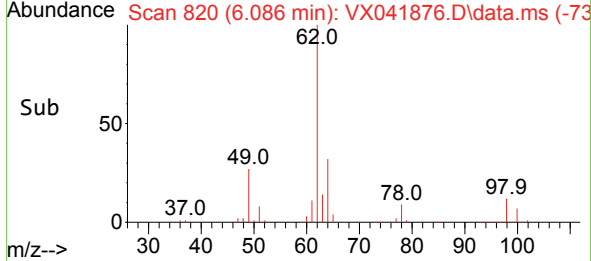
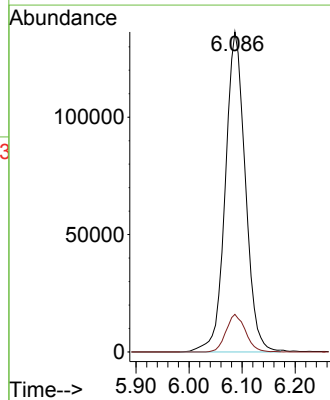
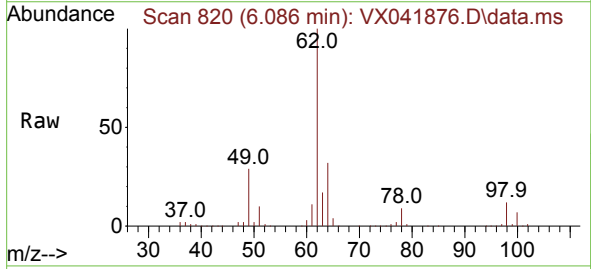
Ion	Ratio	Lower	Upper
41	100		
39	52.2	25.2	75.6
67	73.2	34.2	102.5
52	25.6	15.0	45.1

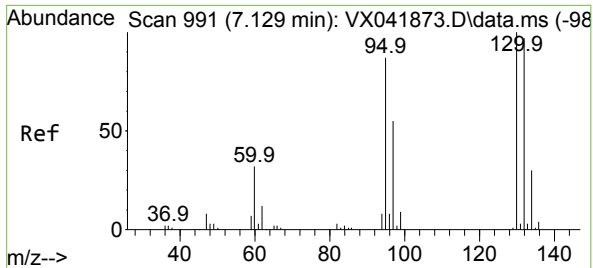


#36
 1,2-Dichloroethane
 Concen: 148.744 ug/l
 RT: 6.086 min Scan# 820
 Delta R.T. 0.000 min
 Lab File: VX041876.D
 Acq: 14 Jun 2024 14:29

Tgt Ion: 62 Resp: 356955

Ion	Ratio	Lower	Upper
62	100		
98	11.4	9.1	13.7

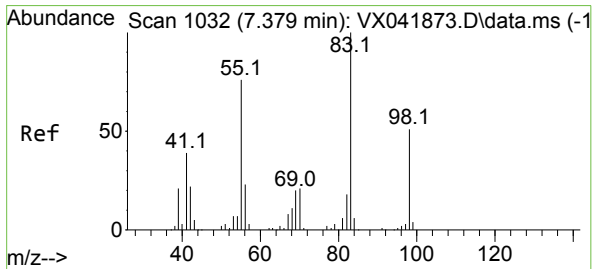
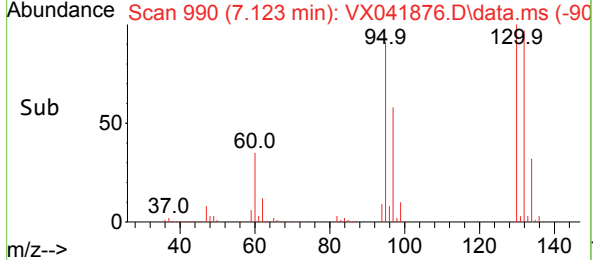
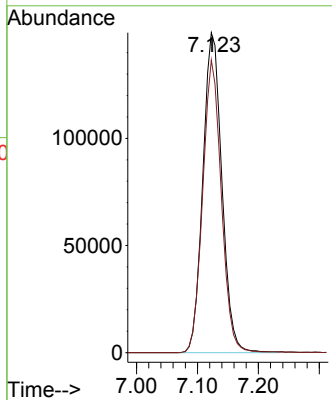
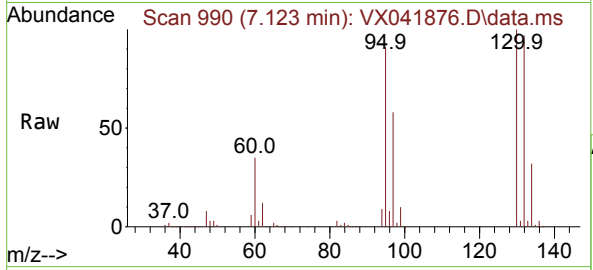




#37
 Trichloroethene
 Concen: 154.278 ug/l
 RT: 7.123 min Scan# 991
 Delta R.T. -0.006 min
 Lab File: VX041876.D
 Acq: 14 Jun 2024 14:29

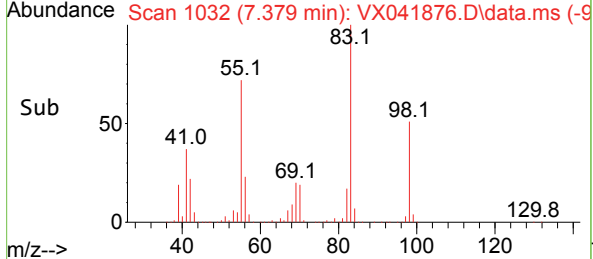
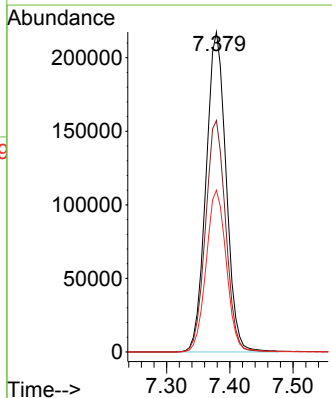
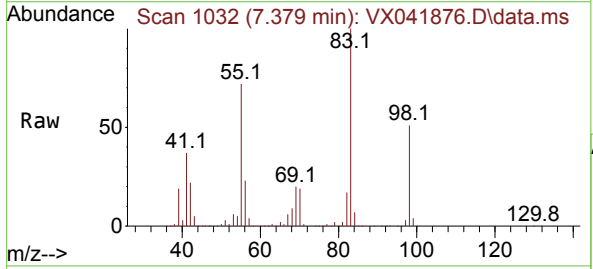
Instrument : MSVOA_X
 ClientSampleId : VSTDIC150

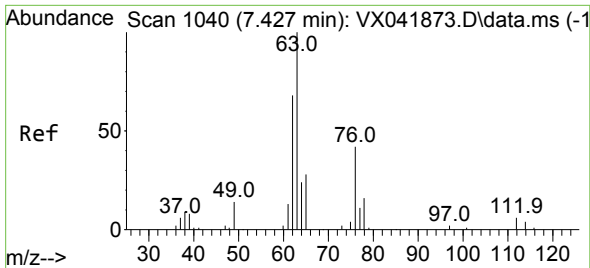
Tgt Ion:130 Resp: 324619
 Ion Ratio Lower Upper
 130 100
 95 91.4 69.4 104.0



#38
 Methylcyclohexane
 Concen: 156.793 ug/l
 RT: 7.379 min Scan# 1032
 Delta R.T. 0.000 min
 Lab File: VX041876.D
 Acq: 14 Jun 2024 14:29

Tgt Ion: 83 Resp: 480250
 Ion Ratio Lower Upper
 83 100
 55 72.4 37.3 111.9
 98 51.1 24.8 74.4

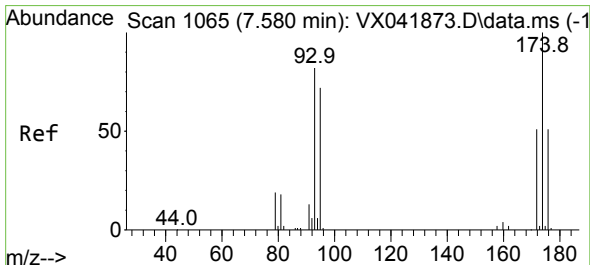
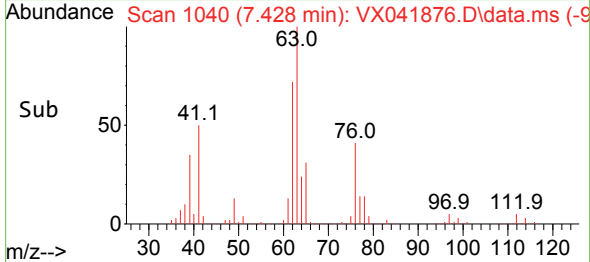
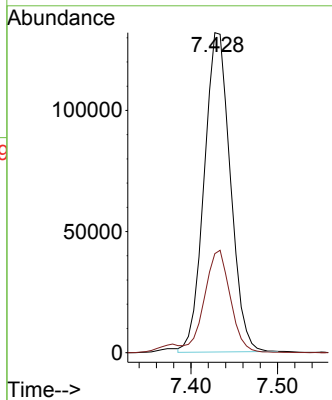
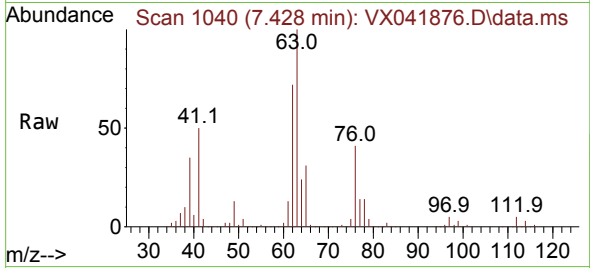




#39
 1,2-Dichloropropane
 Concen: 150.933 ug/l
 RT: 7.428 min Scan# 1040
 Delta R.T. 0.000 min
 Lab File: VX041876.D
 Acq: 14 Jun 2024 14:29

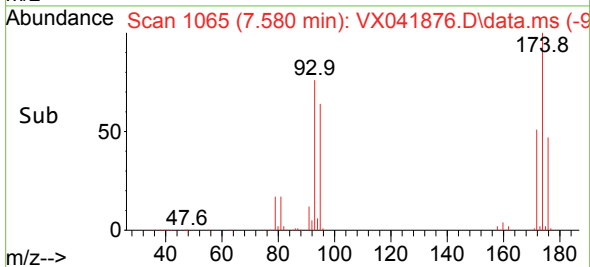
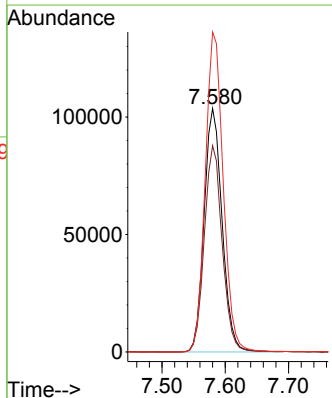
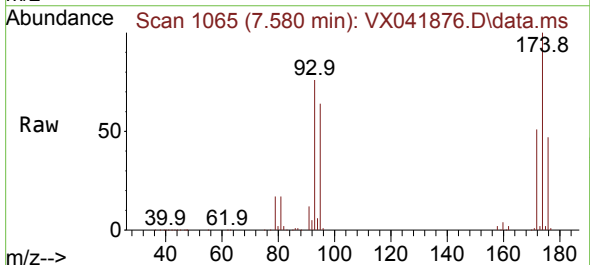
Instrument : MSVOA_X
 ClientSampleId : VSTDICC150

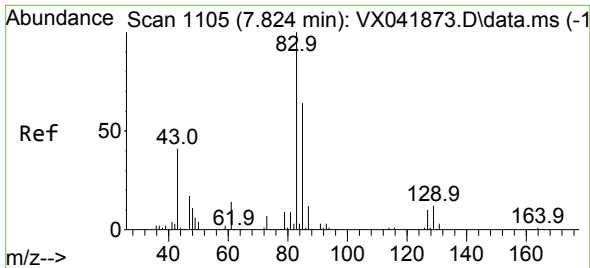
Tgt Ion: 63 Resp: 276956
 Ion Ratio Lower Upper
 63 100
 65 30.9 24.0 36.0



#40
 Dibromomethane
 Concen: 151.445 ug/l
 RT: 7.580 min Scan# 1065
 Delta R.T. 0.000 min
 Lab File: VX041876.D
 Acq: 14 Jun 2024 14:29

Tgt Ion: 93 Resp: 205575
 Ion Ratio Lower Upper
 93 100
 95 83.9 0.0 168.6
 174 130.8 0.0 255.0

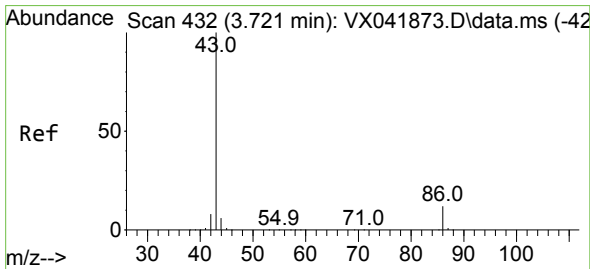
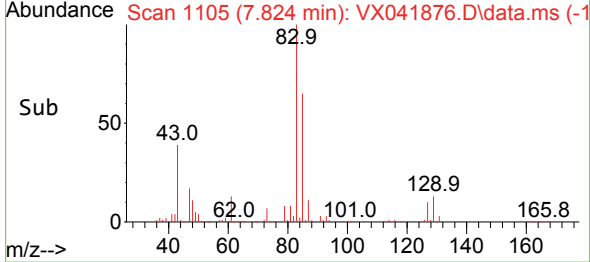
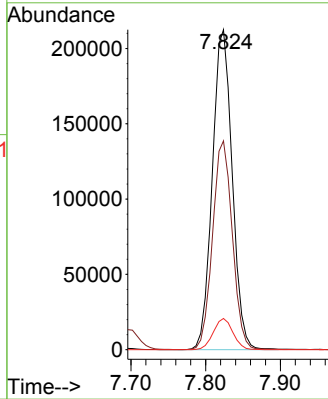
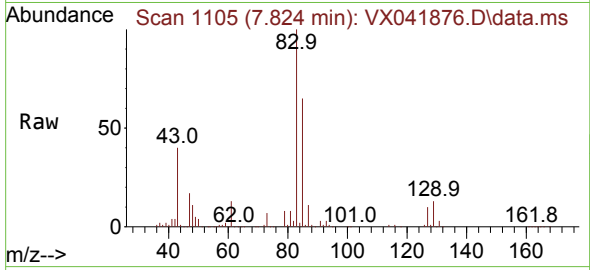




#41
 Bromodichloromethane
 Concen: 161.400 ug/l
 RT: 7.824 min Scan# 1105
 Delta R.T. 0.000 min
 Lab File: VX041876.D
 Acq: 14 Jun 2024 14:29

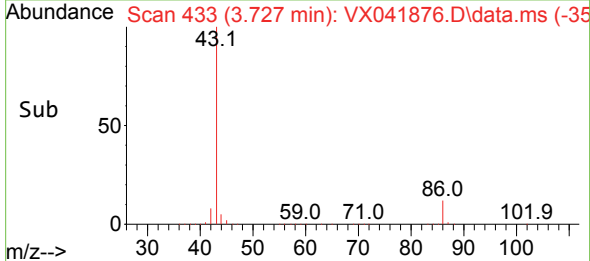
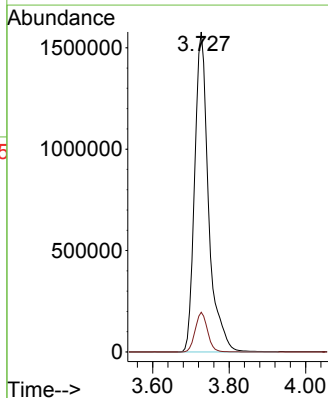
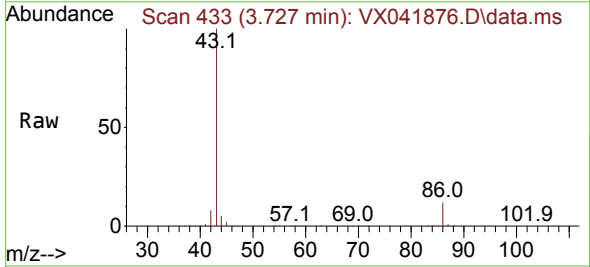
Instrument : MSVOA_X
 ClientSampleId : VSTDIC150

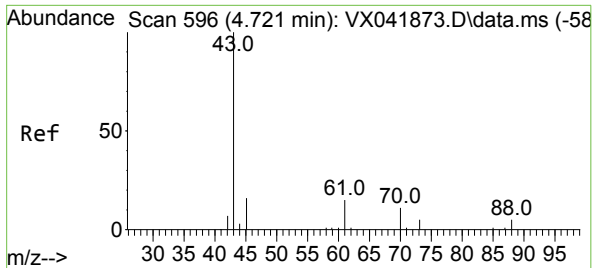
Tgt Ion	Resp	Lower	Upper
83	392495	100	
85	65.2	51.1	76.7
127	9.8	8.1	12.1



#42
 Vinyl Acetate
 Concen: 767.852 ug/l
 RT: 3.727 min Scan# 433
 Delta R.T. 0.006 min
 Lab File: VX041876.D
 Acq: 14 Jun 2024 14:29

Tgt Ion	Resp	Lower	Upper
43	3971225	100	
86	11.0	8.5	12.7





#43
 Ethyl Acetate
 Concen: 151.630 ug/l
 RT: 4.727 min Scan# 597
 Delta R.T. 0.006 min
 Lab File: VX041876.D
 Acq: 14 Jun 2024 14:29

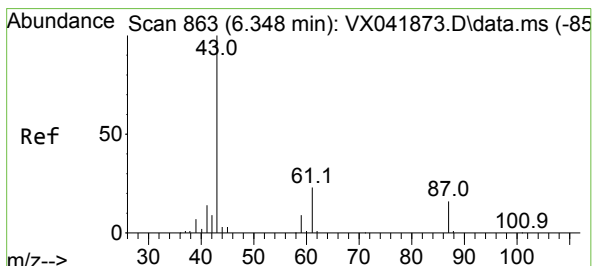
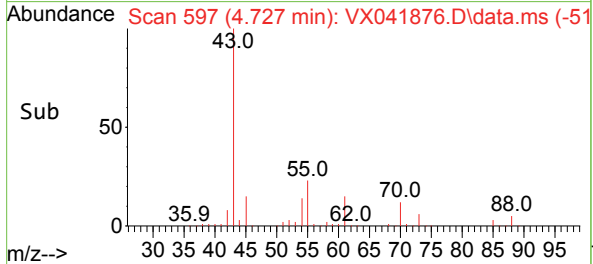
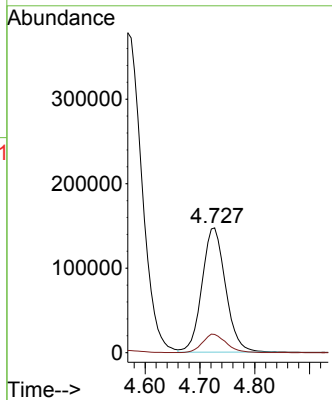
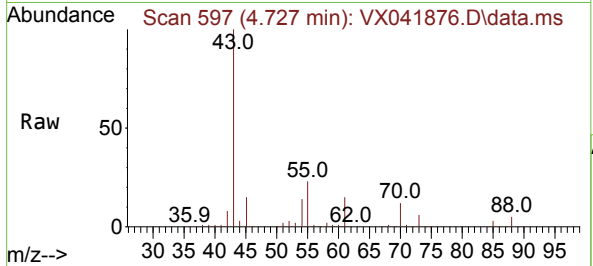
Instrument :

MSVOA_X

ClientSampleId :

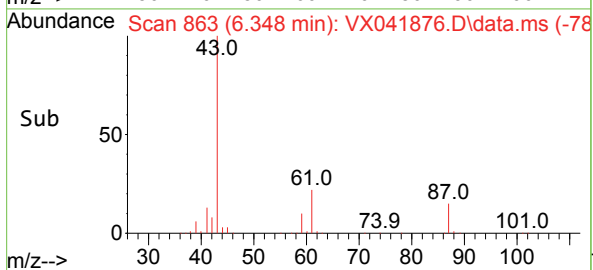
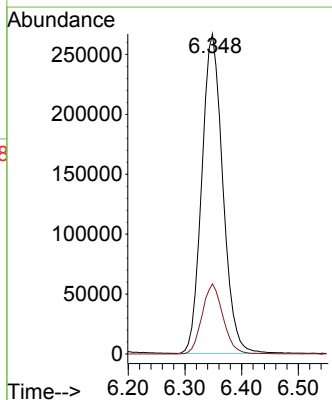
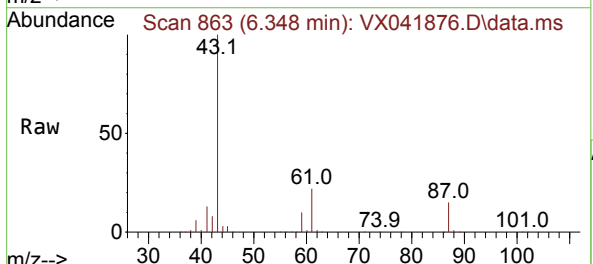
VSTDIC150

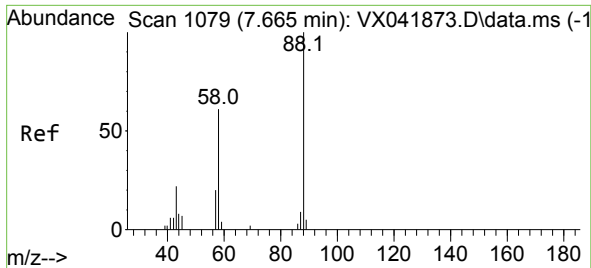
Tgt Ion: 43 Resp: 439286
 Ion Ratio Lower Upper
 43 100
 45 15.0 12.4 18.6



#44
 Isopropyl Acetate
 Concen: 158.289 ug/l
 RT: 6.348 min Scan# 863
 Delta R.T. 0.000 min
 Lab File: VX041876.D
 Acq: 14 Jun 2024 14:29

Tgt Ion: 43 Resp: 686855
 Ion Ratio Lower Upper
 43 100
 61 21.7 17.4 26.0





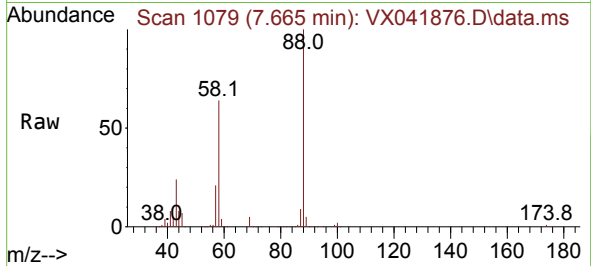
#45
 1,4-Dioxane
 Concen: 3003.988 ug/l
 RT: 7.665 min Scan# 1079
 Delta R.T. 0.000 min
 Lab File: VX041876.D
 Acq: 14 Jun 2024 14:29

Instrument :

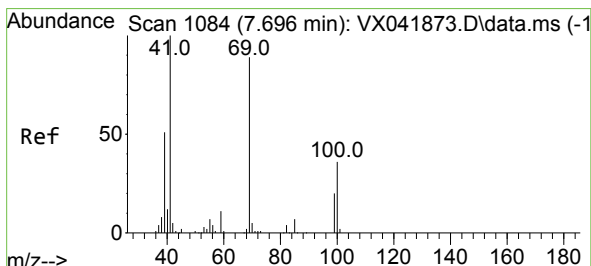
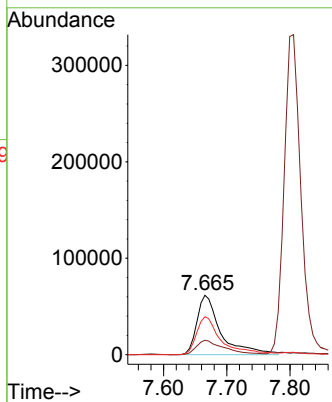
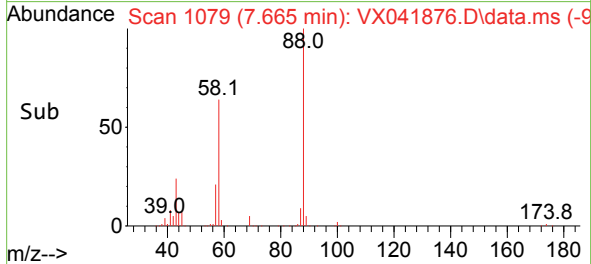
MSVOA_X

ClientSampleId :

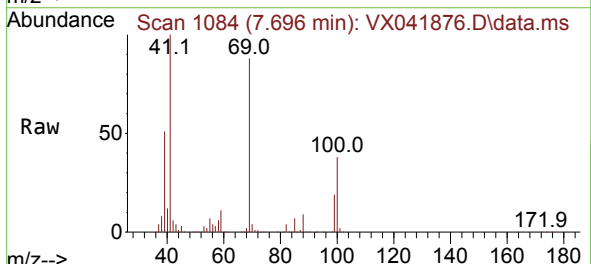
VSTDICC150



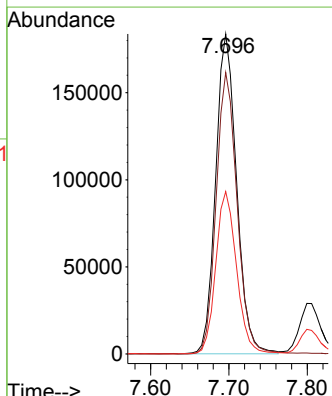
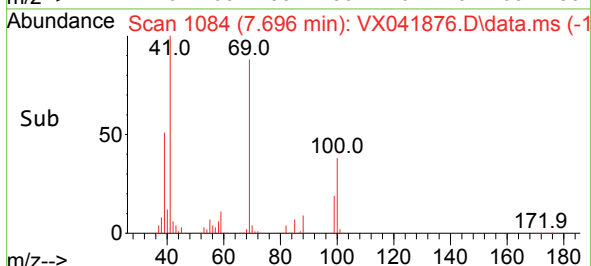
Tgt Ion: 88 Resp: 161609
 Ion Ratio Lower Upper
 88 100
 43 27.8 23.2 34.8
 58 65.8 52.6 78.8

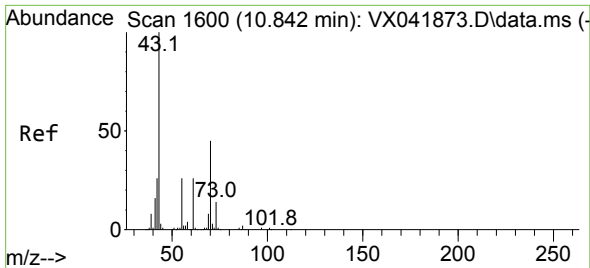


#46
 Methyl methacrylate
 Concen: 161.027 ug/l
 RT: 7.696 min Scan# 1084
 Delta R.T. 0.000 min
 Lab File: VX041876.D
 Acq: 14 Jun 2024 14:29



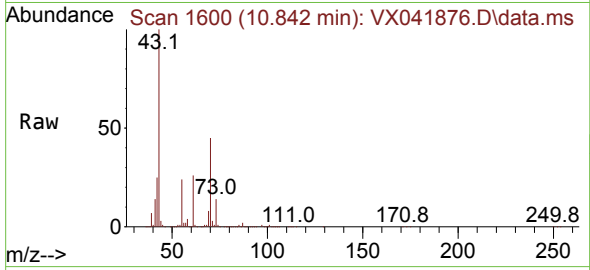
Tgt Ion: 41 Resp: 341635
 Ion Ratio Lower Upper
 41 100
 69 88.0 44.4 133.1
 39 50.7 25.5 76.5



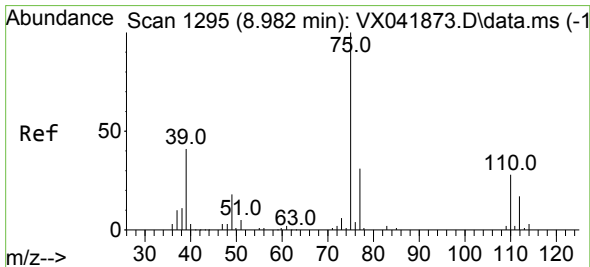
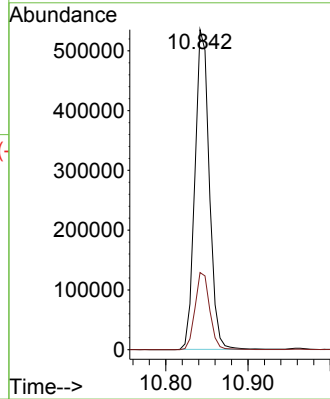
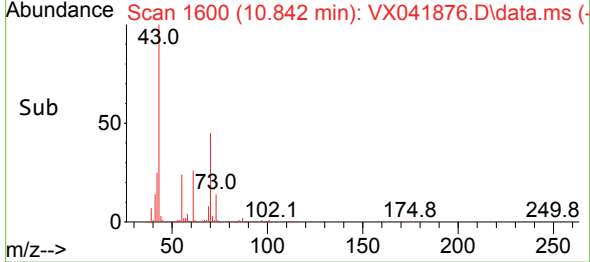


#47
 n-amy1 Acetate
 Concen: 166.433 ug/l
 RT: 10.842 min Scan# 1600
 Delta R.T. 0.000 min
 Lab File: VX041876.D
 Acq: 14 Jun 2024 14:29

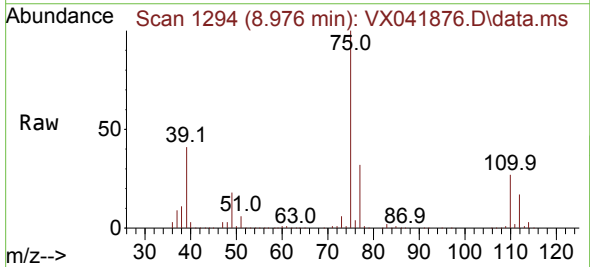
Instrument : MSVOA_X
 ClientSampleId : VSTDIC150



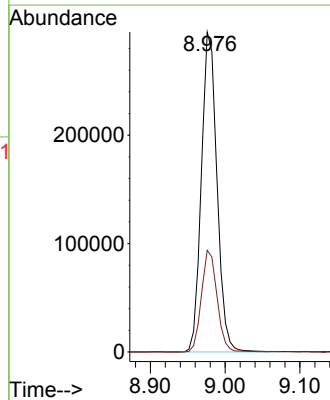
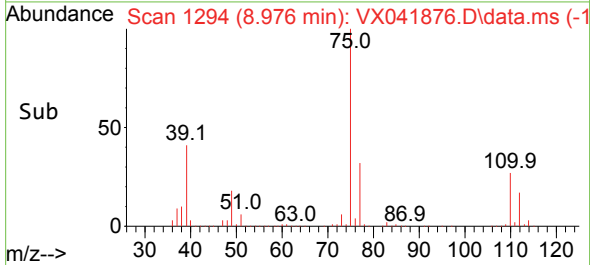
Tgt Ion: 43 Resp: 648153
 Ion Ratio Lower Upper
 43 100
 55 24.7 21.0 31.4

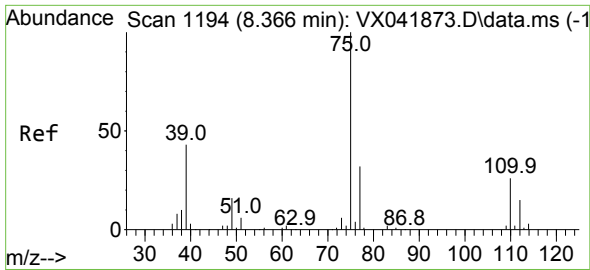


#48
 t-1,3-Dichloropropene
 Concen: 171.034 ug/l
 RT: 8.976 min Scan# 1294
 Delta R.T. -0.006 min
 Lab File: VX041876.D
 Acq: 14 Jun 2024 14:29



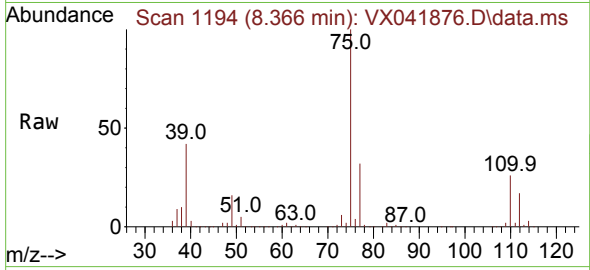
Tgt Ion: 75 Resp: 428241
 Ion Ratio Lower Upper
 75 100
 77 31.8 25.1 37.7





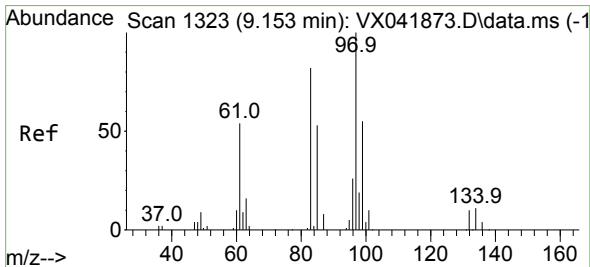
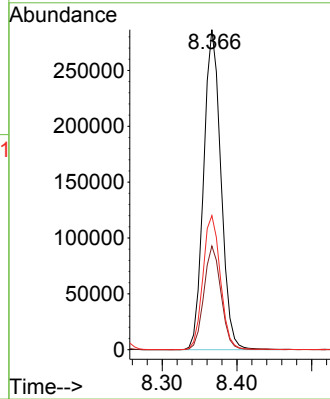
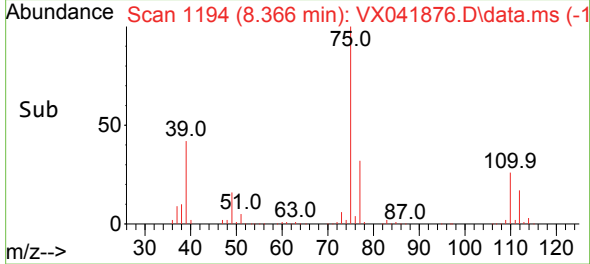
#49
 cis-1,3-Dichloropropene
 Concen: 164.126 ug/l
 RT: 8.366 min Scan# 1194
 Delta R.T. 0.000 min
 Lab File: VX041876.D
 Acq: 14 Jun 2024 14:29

Instrument : MSVOA_X
 ClientSampleId : VSTDICC150

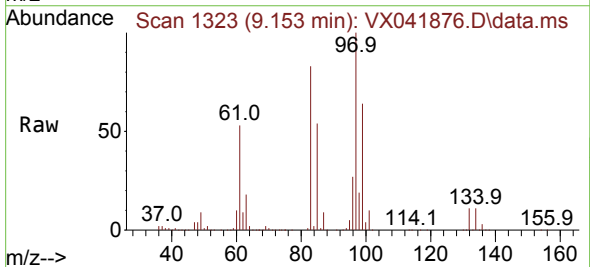


Tgt Ion: 75 Resp: 460966

Ion	Ratio	Lower	Upper
75	100		
77	32.4	25.8	38.8
39	41.9	34.8	52.2

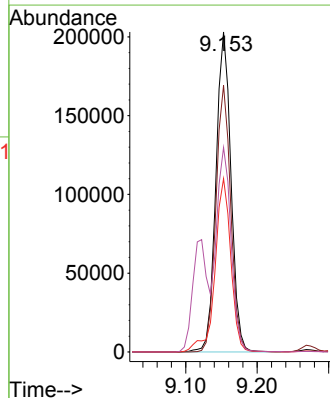
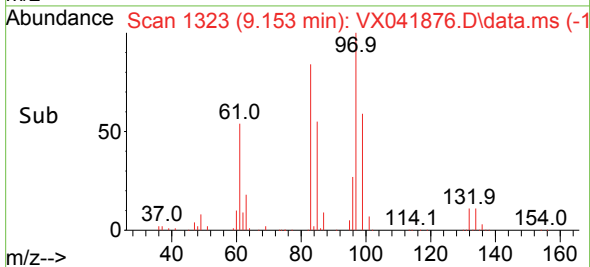


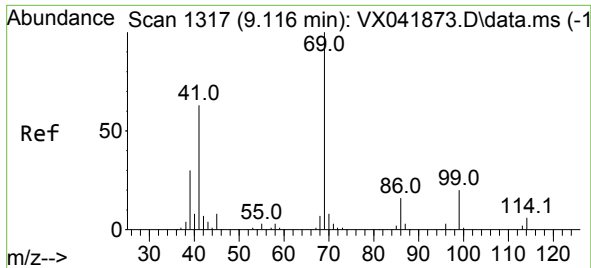
#50
 1,1,2-Trichloroethane
 Concen: 150.533 ug/l
 RT: 9.153 min Scan# 1323
 Delta R.T. 0.000 min
 Lab File: VX041876.D
 Acq: 14 Jun 2024 14:29



Tgt Ion: 97 Resp: 297115

Ion	Ratio	Lower	Upper
97	100		
83	83.3	65.9	98.9
85	54.1	42.9	64.3
99	63.8	48.8	73.2



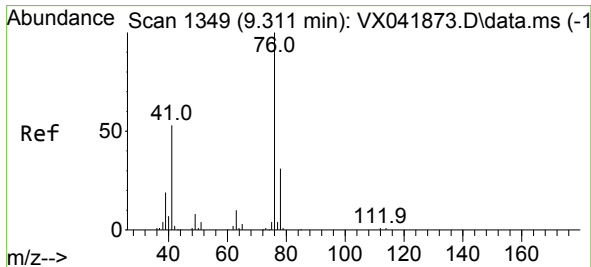
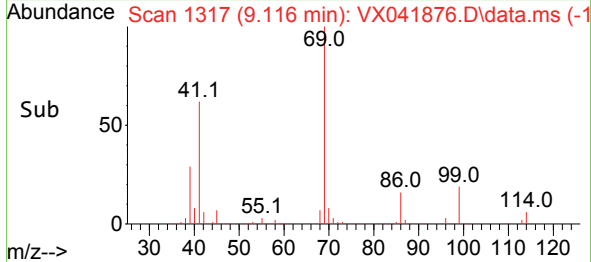
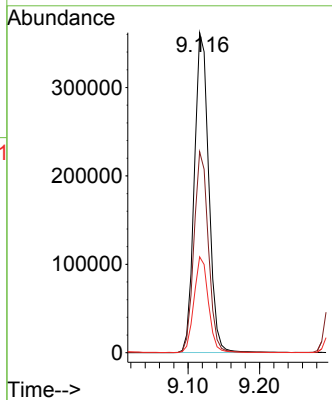
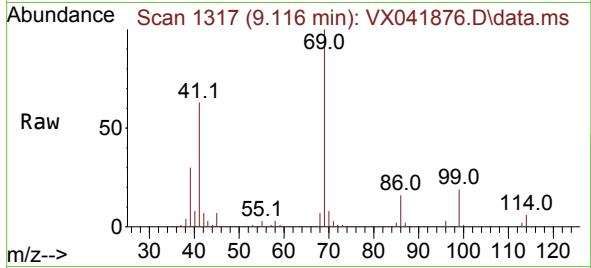


#51
 Ethyl methacrylate
 Concen: 161.455 ug/l
 RT: 9.116 min Scan# 1317
 Delta R.T. 0.000 min
 Lab File: VX041876.D
 Acq: 14 Jun 2024 14:29

Instrument : MSVOA_X
 ClientSampleId : VSTDIC150

Tgt Ion: 69 Resp: 506238

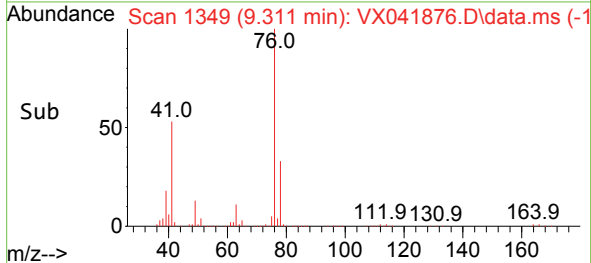
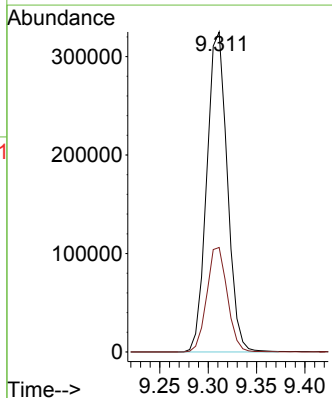
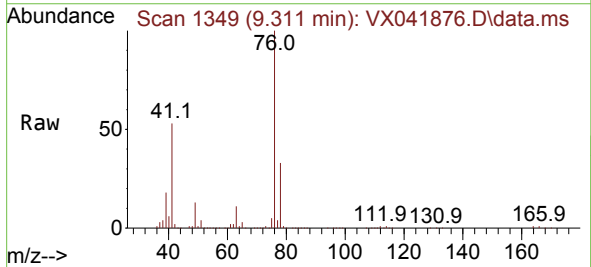
Ion	Ratio	Lower	Upper
69	100		
41	62.8	31.6	94.7
39	29.9	15.3	45.8

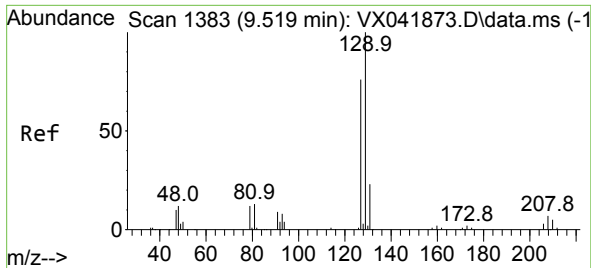


#52
 1,3-Dichloropropane
 Concen: 148.612 ug/l
 RT: 9.311 min Scan# 1349
 Delta R.T. 0.000 min
 Lab File: VX041876.D
 Acq: 14 Jun 2024 14:29

Tgt Ion: 76 Resp: 479536

Ion	Ratio	Lower	Upper
76	100		
78	32.8	0.0	66.0

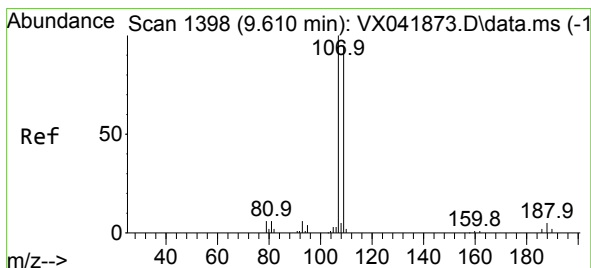
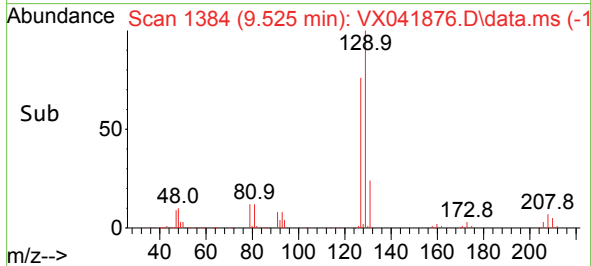
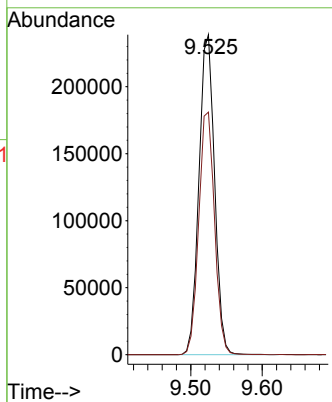
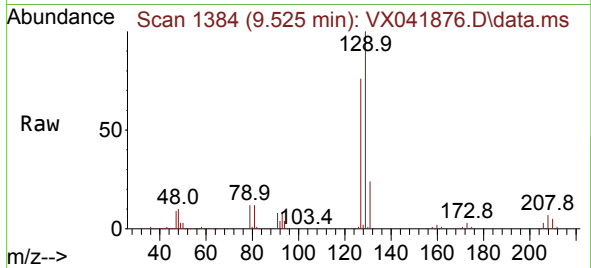




#53
 Dibromochloromethane
 Concen: 167.295 ug/l
 RT: 9.525 min Scan# 1384
 Delta R.T. 0.006 min
 Lab File: VX041876.D
 Acq: 14 Jun 2024 14:29

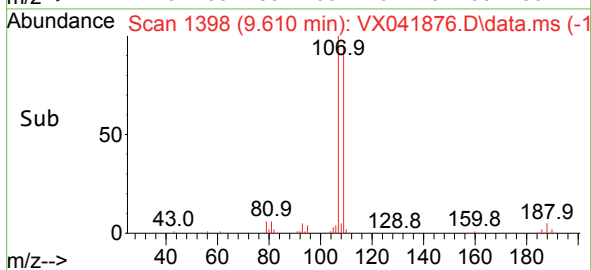
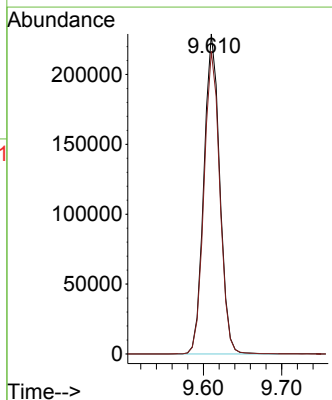
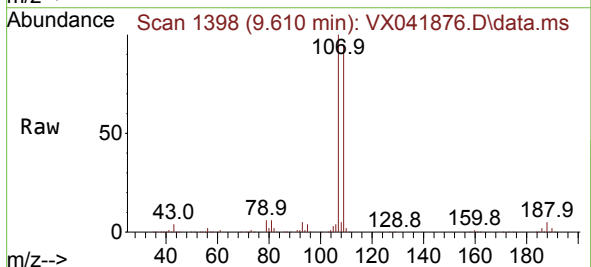
Instrument : MSVOA_X
 ClientSampleId : VSTDICC150

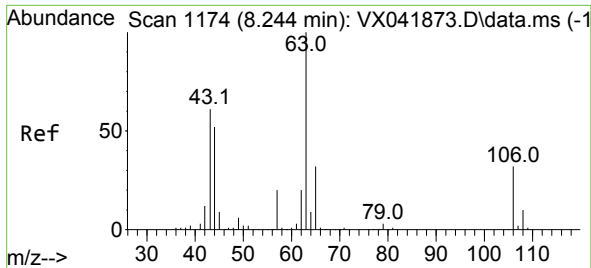
Tgt Ion:129 Resp: 361352
 Ion Ratio Lower Upper
 129 100
 127 77.0 38.8 116.4



#54
 1,2-Dibromoethane
 Concen: 154.175 ug/l
 RT: 9.610 min Scan# 1398
 Delta R.T. 0.000 min
 Lab File: VX041876.D
 Acq: 14 Jun 2024 14:29

Tgt Ion:107 Resp: 320901
 Ion Ratio Lower Upper
 107 100
 109 94.1 75.7 113.5



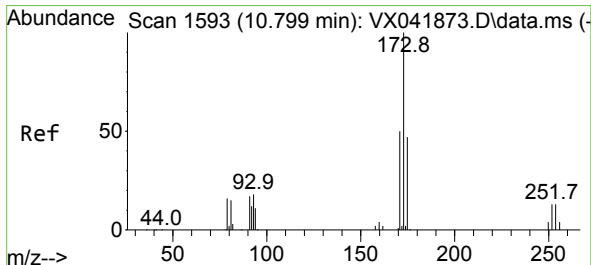
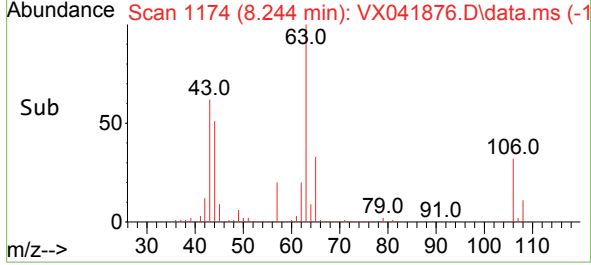
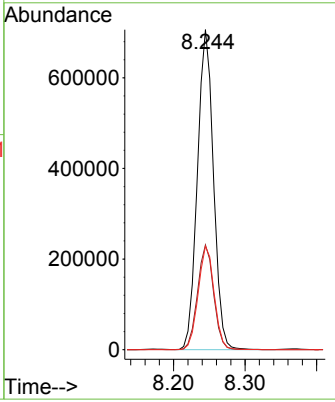
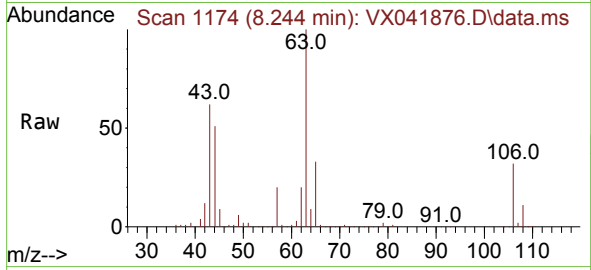


#55
 2-Chloroethyl vinyl ether
 Concen: 755.446 ug/l
 RT: 8.244 min Scan# 1174
 Delta R.T. 0.000 min
 Lab File: VX041876.D
 Acq: 14 Jun 2024 14:29

Instrument : MSVOA_X
 ClientSampleId : VSTDIC150

Tgt Ion: 63 Resp: 1102524

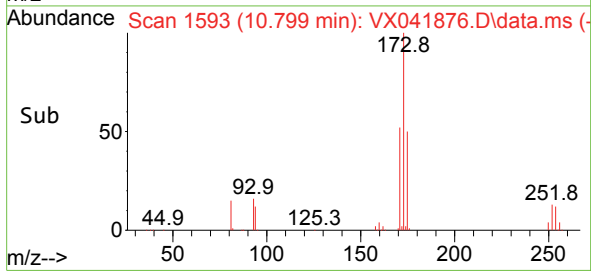
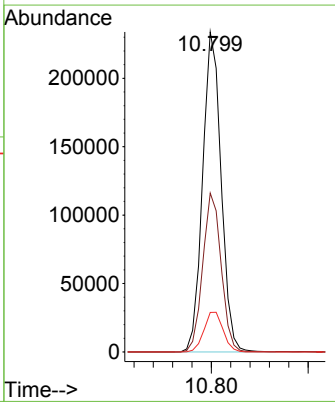
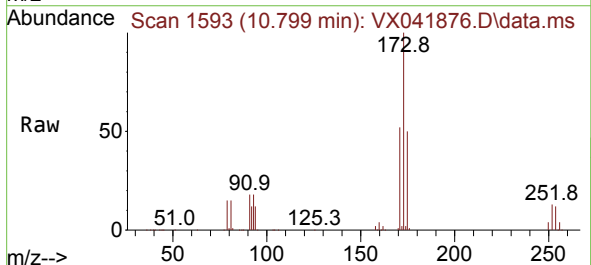
Ion	Ratio	Lower	Upper
63	100		
65	32.7	25.7	38.5
106	32.2	25.3	37.9

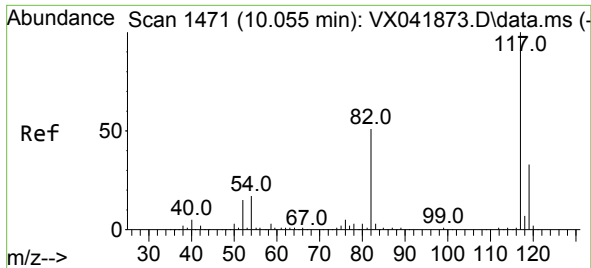


#56
 Bromoform
 Concen: 176.488 ug/l
 RT: 10.799 min Scan# 1593
 Delta R.T. 0.000 min
 Lab File: VX041876.D
 Acq: 14 Jun 2024 14:29

Tgt Ion: 173 Resp: 310844

Ion	Ratio	Lower	Upper
173	100		
175	49.6	39.3	58.9
254	13.0	9.6	14.4



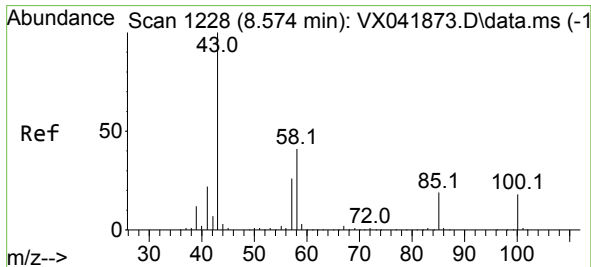
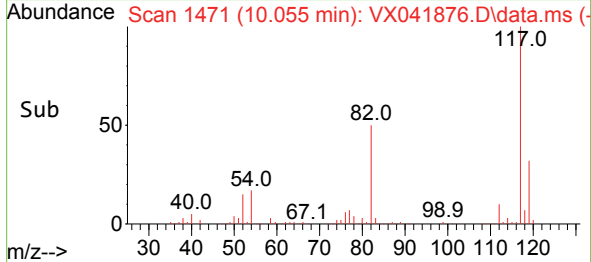
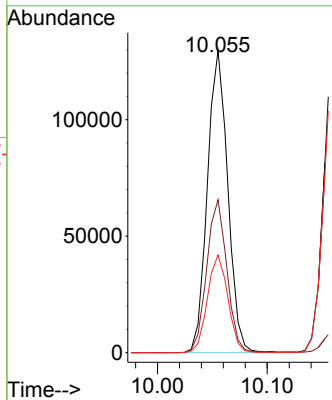
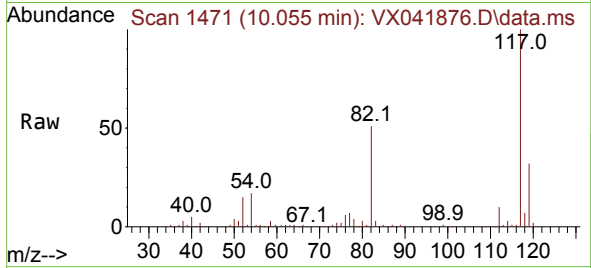


#57
 Chlorobenzene-d5
 Concen: 30.000 ug/l
 RT: 10.055 min Scan# 14
 Delta R.T. 0.000 min
 Lab File: VX041876.D
 Acq: 14 Jun 2024 14:29

Instrument :
 MSVOA_X
 ClientSampleId :
 VSTDIC150

Tgt Ion:117 Resp: 167553

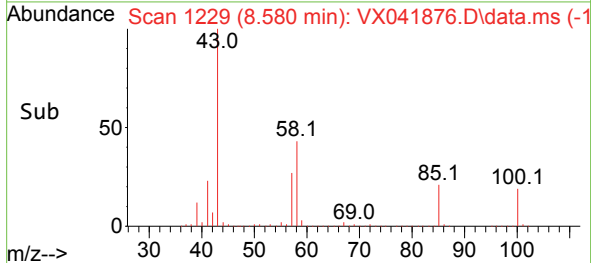
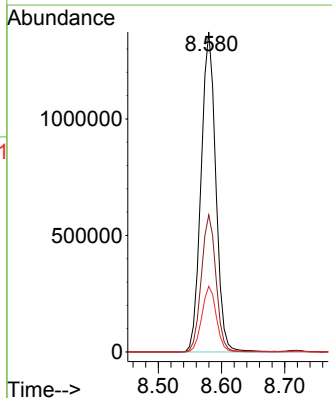
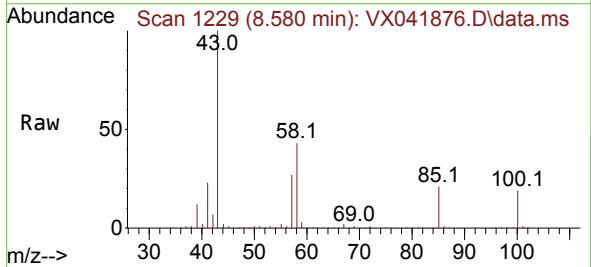
Ion	Ratio	Lower	Upper
117	100		
82	50.2	41.1	61.7
119	32.5	26.1	39.1

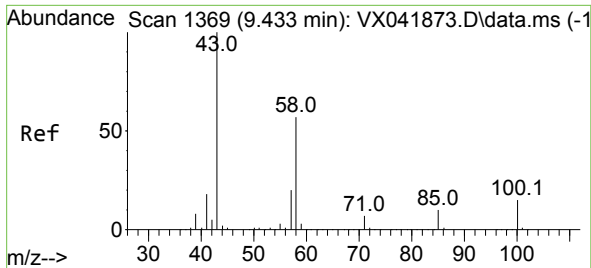


#58
 4-Methyl-2-Pentanone
 Concen: 741.901 ug/l
 RT: 8.580 min Scan# 1229
 Delta R.T. 0.006 min
 Lab File: VX041876.D
 Acq: 14 Jun 2024 14:29

Tgt Ion: 43 Resp: 2227491

Ion	Ratio	Lower	Upper
43	100		
58	42.5	33.2	49.8
85	20.3	15.5	23.3



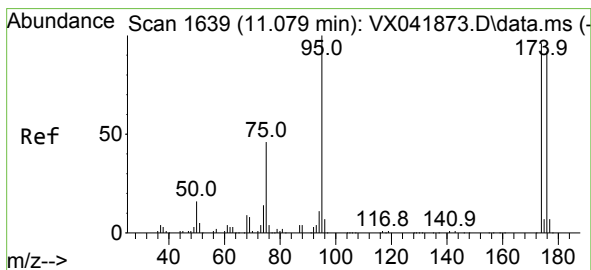
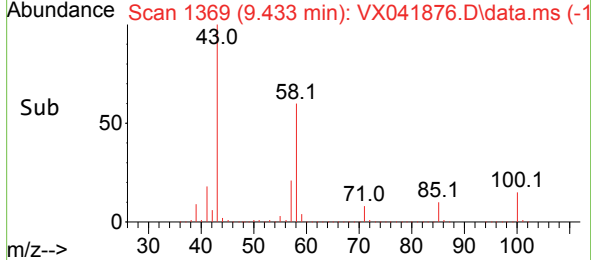
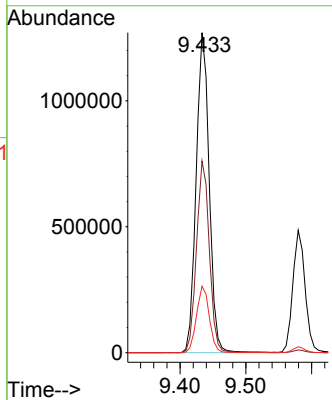
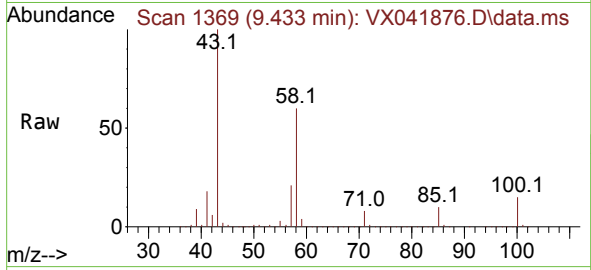


#59
 2-Hexanone
 Concen: 750.011 ug/l
 RT: 9.433 min Scan# 11
 Delta R.T. 0.000 min
 Lab File: VX041876.D
 Acq: 14 Jun 2024 14:29

Instrument : MSVOA_X
 ClientSampleId : VSTDIC150

Tgt Ion: 43 Resp: 1738052

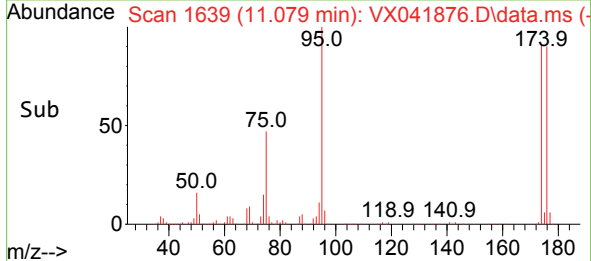
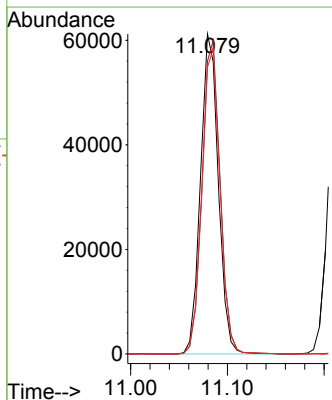
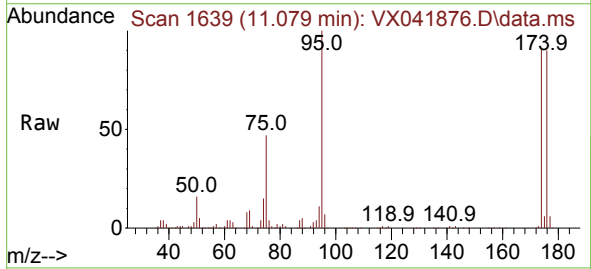
Ion	Ratio	Lower	Upper
43	100		
58	59.4	46.0	69.0
57	20.5	15.8	23.6

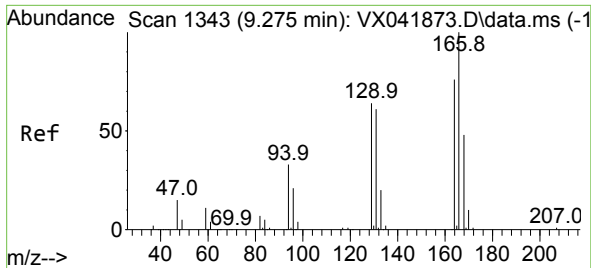


#60
 4-Bromofluorobenzene
 Concen: 30.257 ug/l
 RT: 11.079 min Scan# 1639
 Delta R.T. 0.000 min
 Lab File: VX041876.D
 Acq: 14 Jun 2024 14:29

Tgt Ion: 95 Resp: 78474

Ion	Ratio	Lower	Upper
95	100		
174	99.3	78.9	118.3
176	96.7	77.1	115.7

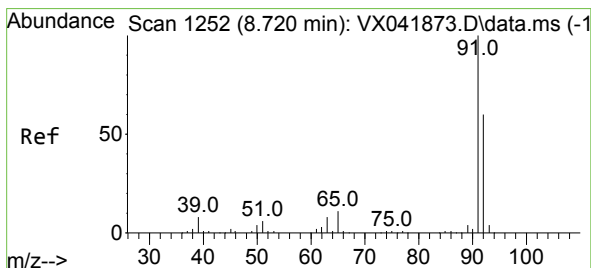
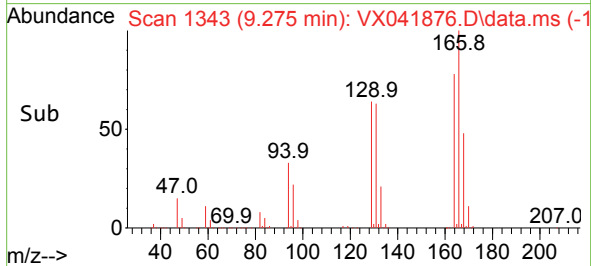
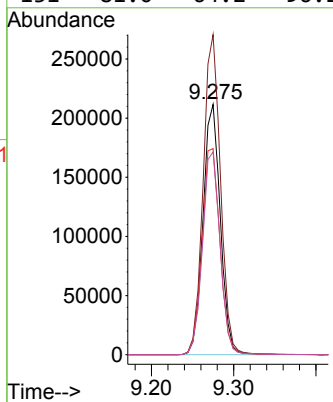
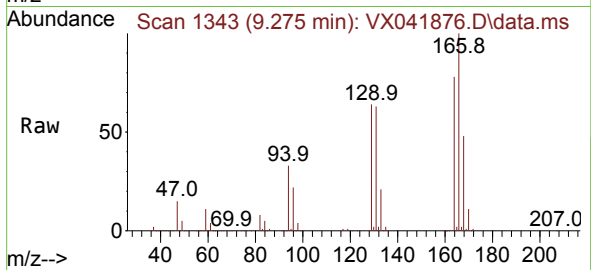




#61
 Tetrachloroethene
 Concen: 146.857 ug/l
 RT: 9.275 min Scan# 111
 Delta R.T. 0.000 min
 Lab File: VX041876.D
 Acq: 14 Jun 2024 14:29

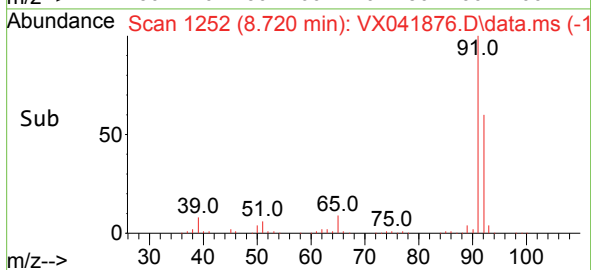
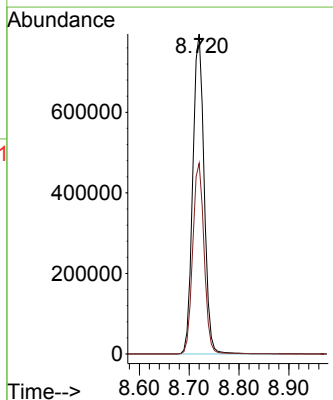
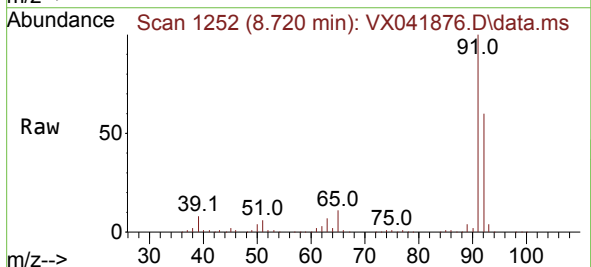
Instrument :
 MSVOA_X
 ClientSampleId :
 VSTDIC150

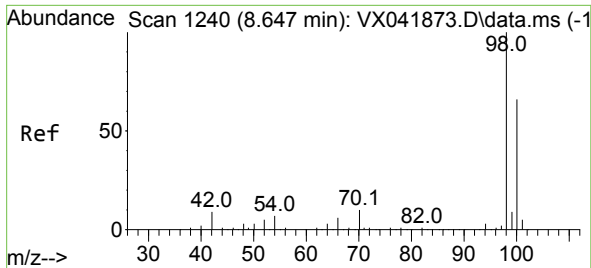
Tgt Ion:164 Resp: 309629
 Ion Ratio Lower Upper
 164 100
 166 127.9 105.0 157.6
 129 82.3 67.1 100.7
 131 81.0 64.2 96.2



#62
 Toluene
 Concen: 147.752 ug/l
 RT: 8.720 min Scan# 1252
 Delta R.T. 0.000 min
 Lab File: VX041876.D
 Acq: 14 Jun 2024 14:29

Tgt Ion: 91 Resp: 1252754
 Ion Ratio Lower Upper
 91 100
 92 59.9 47.4 71.2

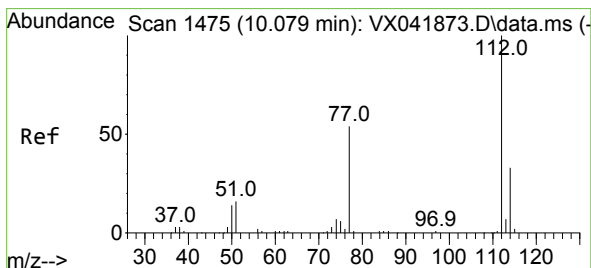
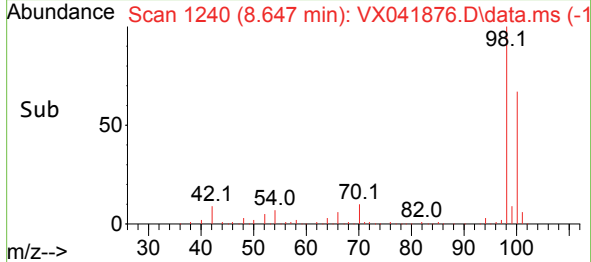
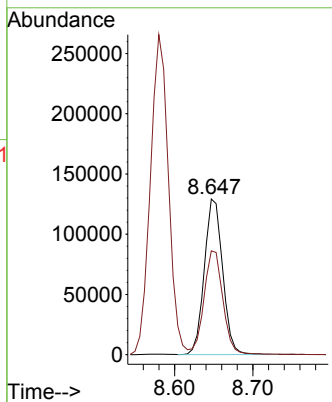
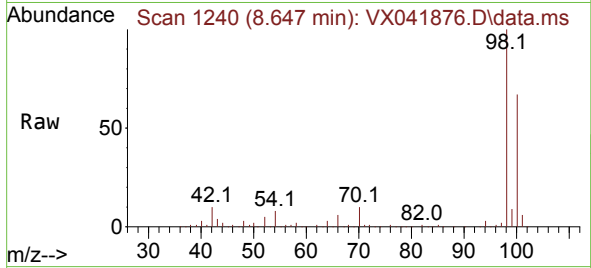




#63
 Toluene-d8
 Concen: 29.273 ug/l
 RT: 8.647 min Scan# 11
 Delta R.T. 0.000 min
 Lab File: VX041876.D
 Acq: 14 Jun 2024 14:29

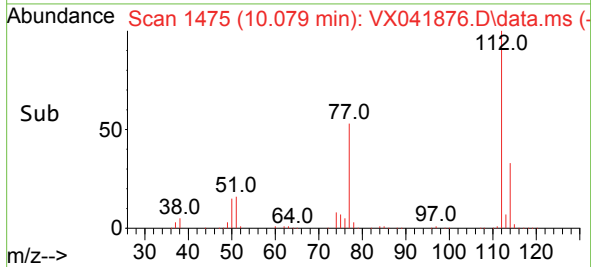
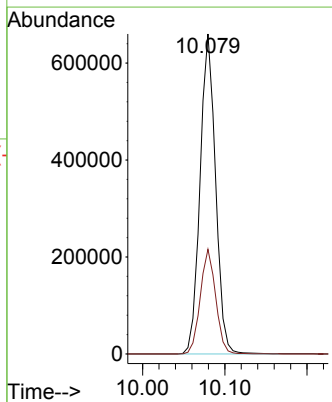
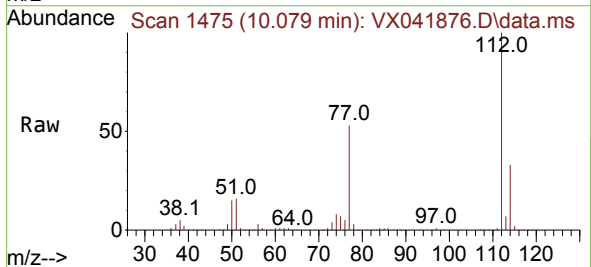
Instrument :
 MSVOA_X
 ClientSampleId :
 VSTDIC150

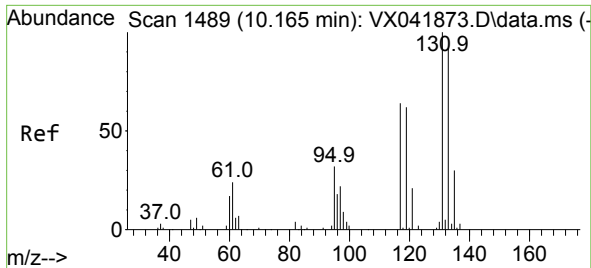
Tgt Ion: 98 Resp: 209845
 Ion Ratio Lower Upper
 98 100
 100 68.0 52.7 79.1



#64
 Chlorobenzene
 Concen: 149.943 ug/l
 RT: 10.079 min Scan# 1475
 Delta R.T. 0.000 min
 Lab File: VX041876.D
 Acq: 14 Jun 2024 14:29

Tgt Ion: 112 Resp: 865732
 Ion Ratio Lower Upper
 112 100
 114 32.7 26.2 39.4

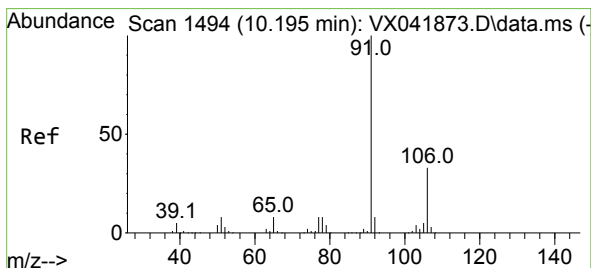
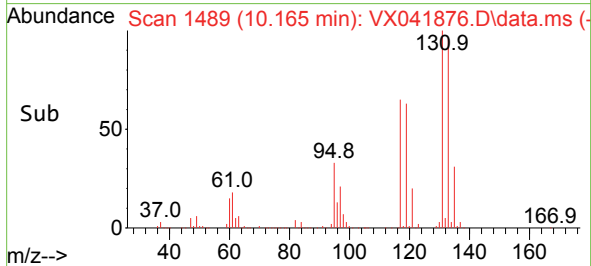
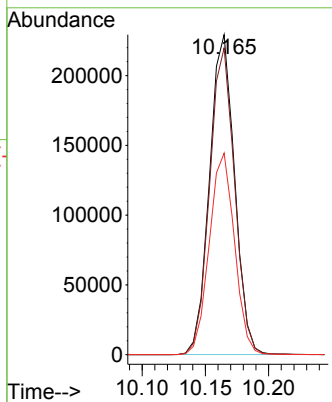
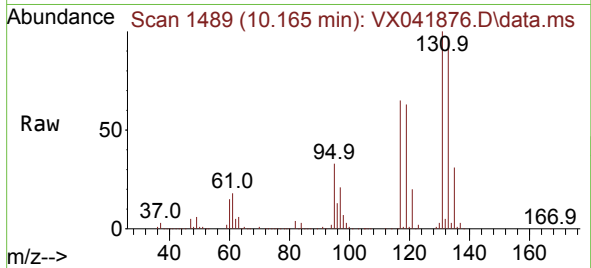




#65
 1,1,1,2-Tetrachloroethane
 Concen: 158.423 ug/l
 RT: 10.165 min Scan# 1489
 Delta R.T. 0.000 min
 Lab File: VX041876.D
 Acq: 14 Jun 2024 14:29

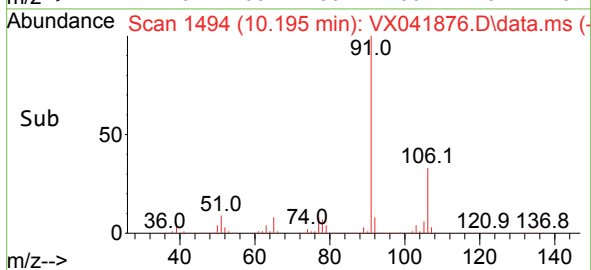
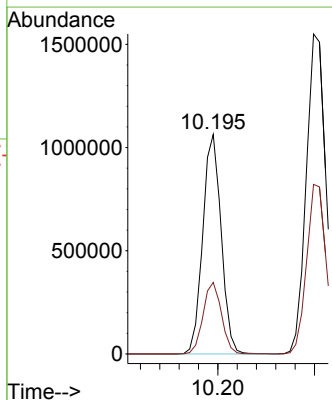
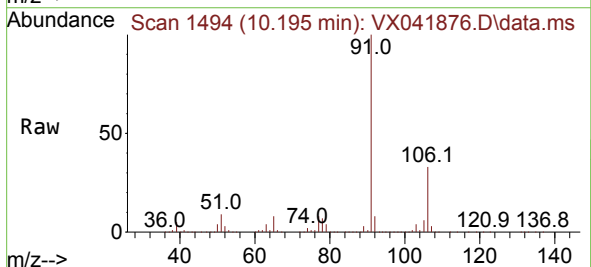
Instrument : MSVOA_X
 ClientSampleId : VSTDIC150

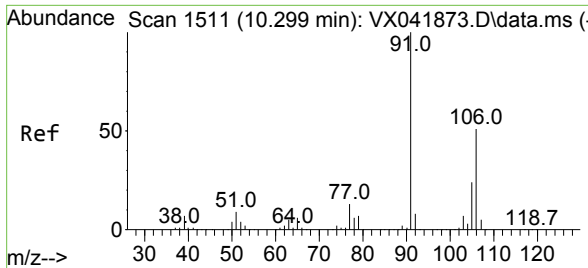
Tgt Ion	Resp	Lower	Upper
131	315900		
133	95.6	0.0	194.8
119	63.5	0.0	127.6



#66
 Ethyl Benzene
 Concen: 152.087 ug/l
 RT: 10.195 min Scan# 1494
 Delta R.T. 0.000 min
 Lab File: VX041876.D
 Acq: 14 Jun 2024 14:29

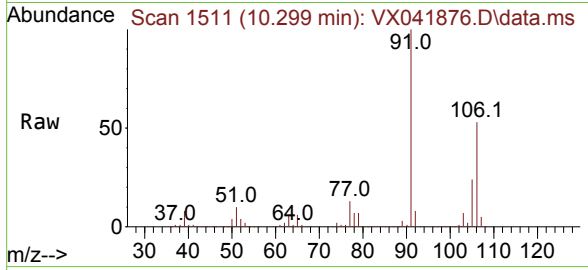
Tgt Ion	Resp	Lower	Upper
91	1409804		
106	32.6	26.4	39.6



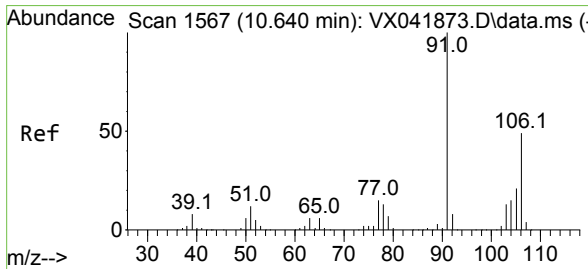
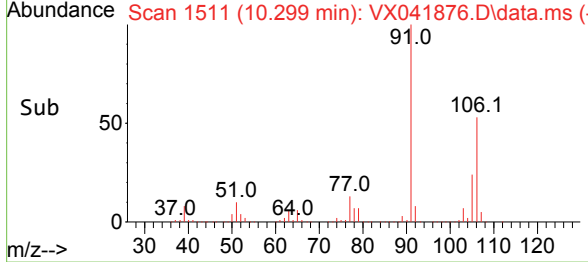
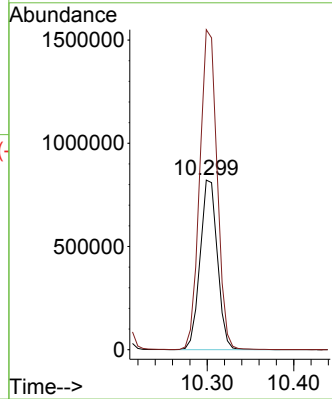


#67
 m/p-Xylenes
 Concen: 305.226 ug/l
 RT: 10.299 min Scan# 1511
 Delta R.T. 0.000 min
 Lab File: VX041876.D
 Acq: 14 Jun 2024 14:29

Instrument : MSVOA_X
 ClientSampleId : VSTDIC150

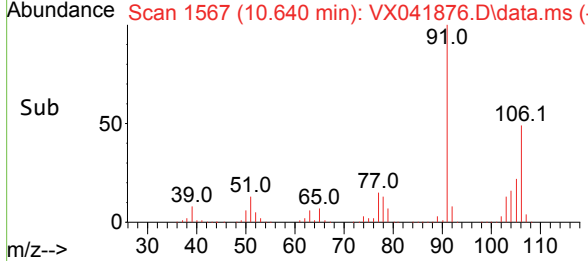
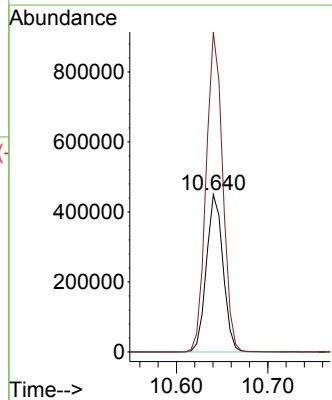
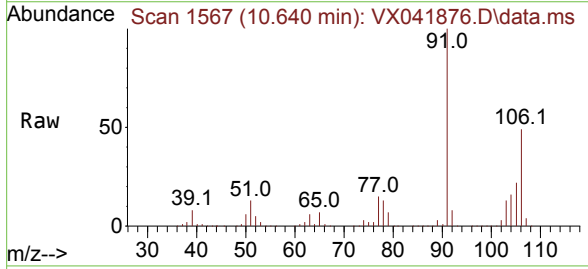


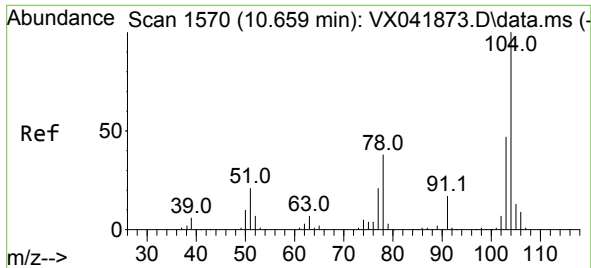
Tgt Ion:106 Resp: 1138061
 Ion Ratio Lower Upper
 106 100
 91 190.0 157.0 235.6



#68
 o-Xylene
 Concen: 152.633 ug/l
 RT: 10.640 min Scan# 1567
 Delta R.T. 0.000 min
 Lab File: VX041876.D
 Acq: 14 Jun 2024 14:29

Tgt Ion:106 Resp: 567397
 Ion Ratio Lower Upper
 106 100
 91 202.3 103.2 309.6



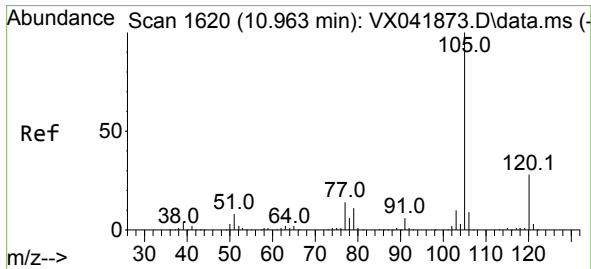
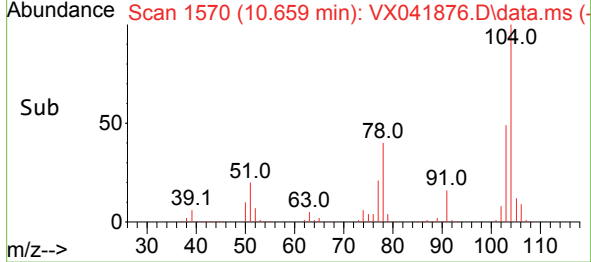
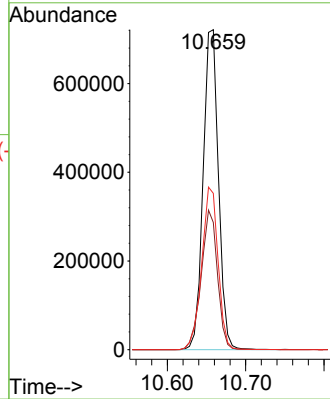
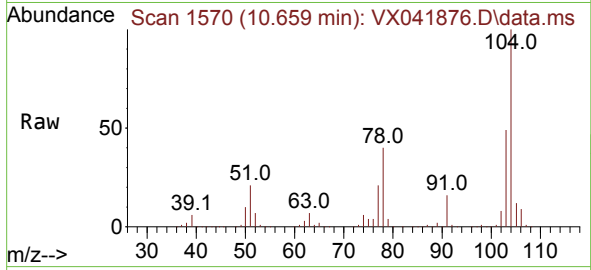


#69
 Styrene
 Concen: 157.474 ug/l
 RT: 10.659 min Scan# 1570
 Delta R.T. 0.000 min
 Lab File: VX041876.D
 Acq: 14 Jun 2024 14:29

Instrument : MSVOA_X
 ClientSampleId : VSTDIC150

Tgt Ion:104 Resp: 978238

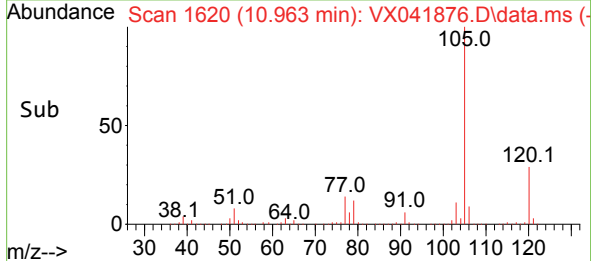
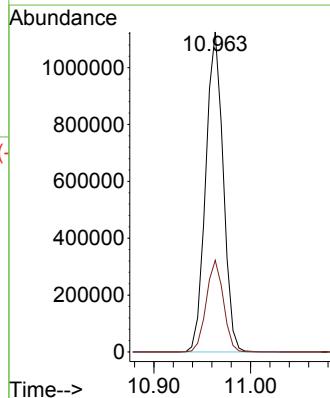
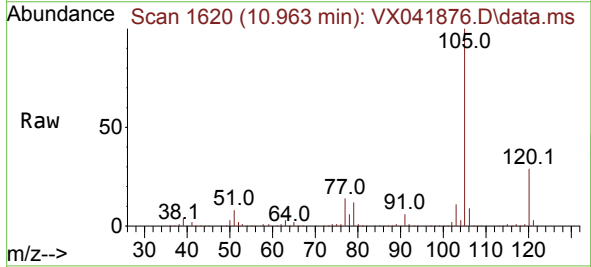
Ion	Ratio	Lower	Upper
104	100		
78	46.4	36.5	54.7
103	54.4	43.4	65.2

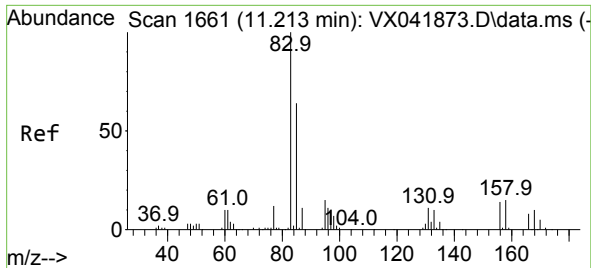


#70
 Isopropylbenzene
 Concen: 151.291 ug/l
 RT: 10.963 min Scan# 1620
 Delta R.T. 0.000 min
 Lab File: VX041876.D
 Acq: 14 Jun 2024 14:29

Tgt Ion:105 Resp: 1414092

Ion	Ratio	Lower	Upper
105	100		
120	28.2	19.2	35.6

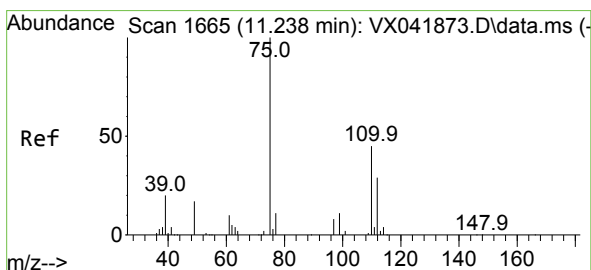
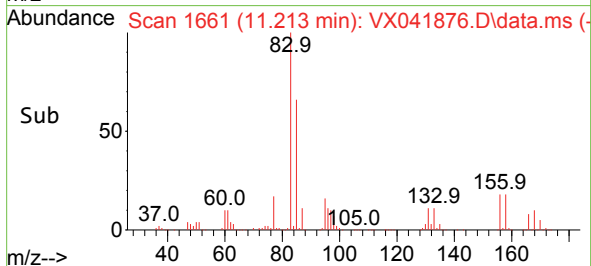
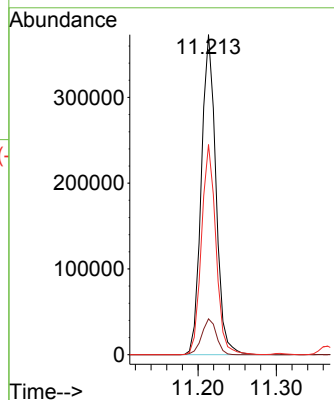
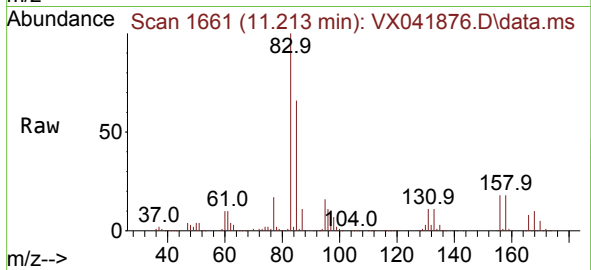




#71
 1,1,2,2-Tetrachloroethane
 Concen: 149.141 ug/l
 RT: 11.213 min Scan# 1661
 Delta R.T. 0.000 min
 Lab File: VX041876.D
 Acq: 14 Jun 2024 14:29

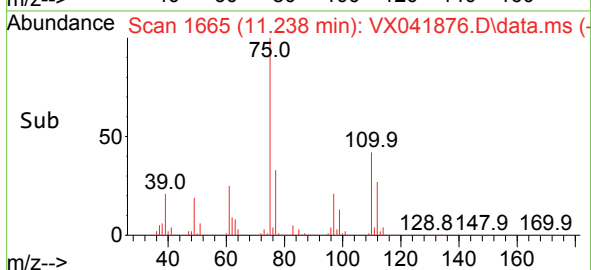
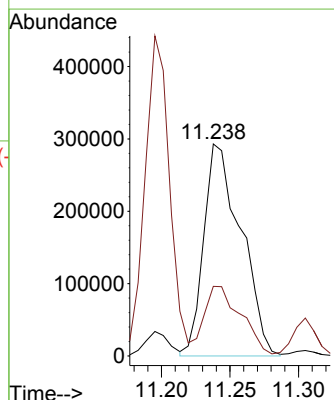
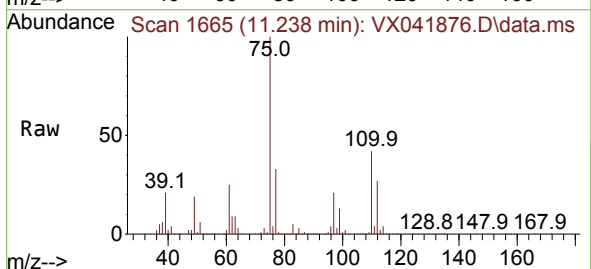
Instrument : MSVOA_X
 ClientSampleId : VSTDIC150

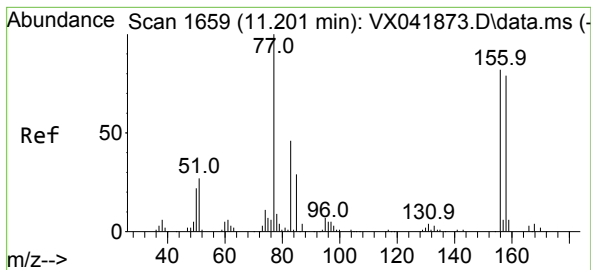
Tgt Ion: 83 Resp: 482437
 Ion Ratio Lower Upper
 83 100
 131 11.3 5.5 16.7
 85 65.2 32.6 97.7



#72
 1,2,3-Trichloropropane
 Concen: 199.907 ug/l
 RT: 11.238 min Scan# 1665
 Delta R.T. 0.000 min
 Lab File: VX041876.D
 Acq: 14 Jun 2024 14:29

Tgt Ion: 75 Resp: 554273
 Ion Ratio Lower Upper
 75 100
 77 32.9 0.0 79.6

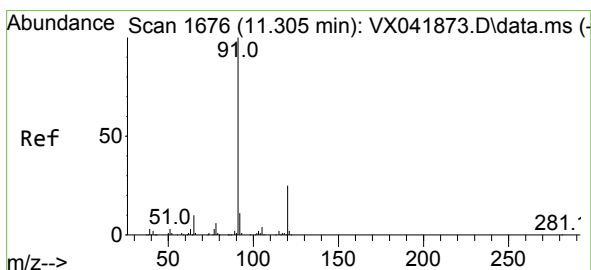
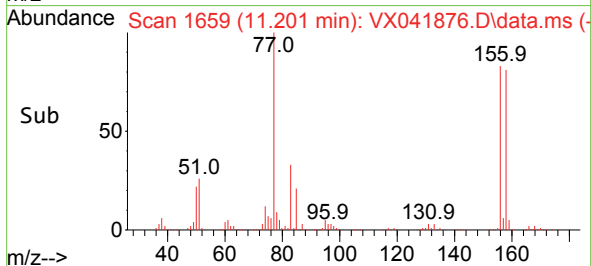
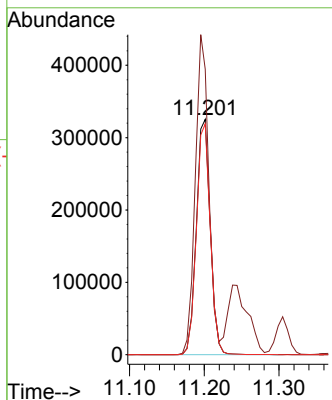
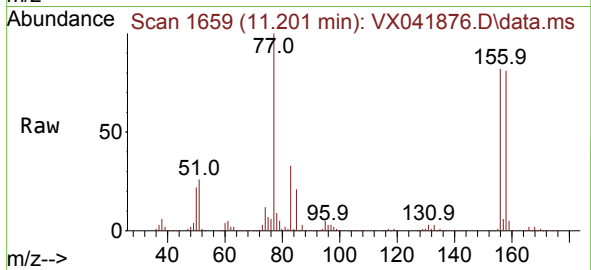




#73
 Bromobenzene
 Concen: 153.710 ug/l
 RT: 11.201 min Scan# 1659
 Delta R.T. 0.000 min
 Lab File: VX041876.D
 Acq: 14 Jun 2024 14:29

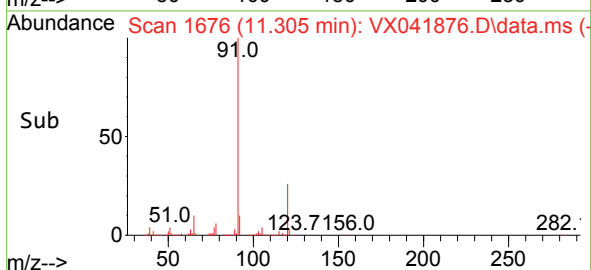
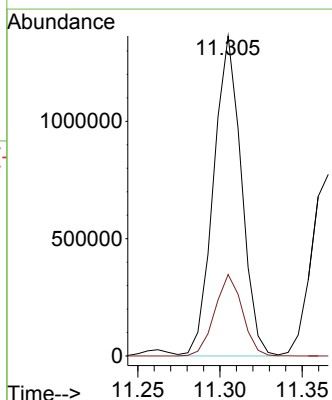
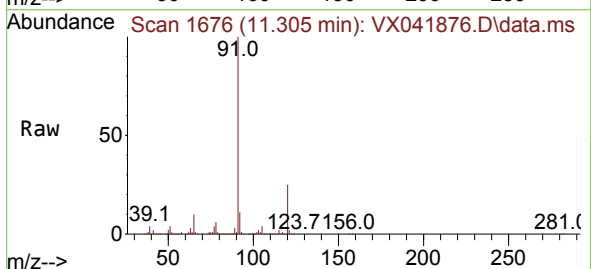
Instrument : MSVOA_X
 ClientSampleId : VSTDIC150

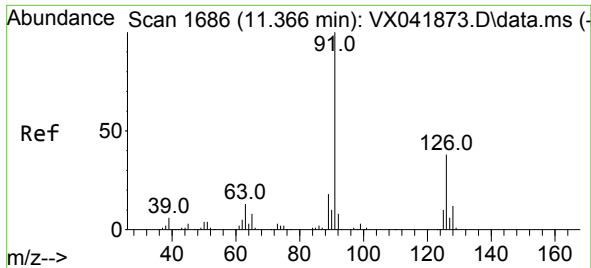
Tgt Ion	Resp	Lower	Upper
156	419068		
100			
77	132.0	0.0	266.2
158	97.8	0.0	195.2



#74
 n-propylbenzene
 Concen: 156.162 ug/l
 RT: 11.305 min Scan# 1676
 Delta R.T. 0.000 min
 Lab File: VX041876.D
 Acq: 14 Jun 2024 14:29

Tgt Ion	Resp	Lower	Upper
91	1603399		
100			
120	25.1	0.0	49.6

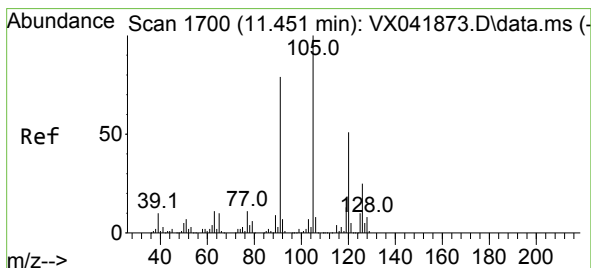
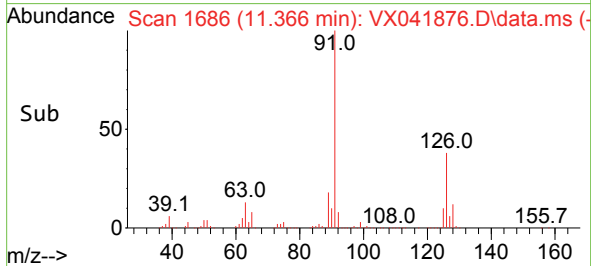
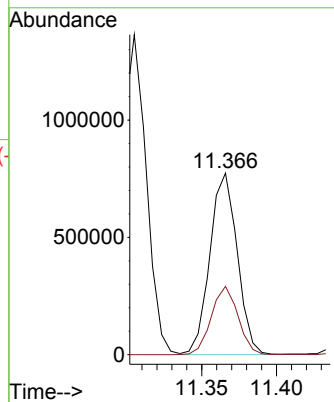
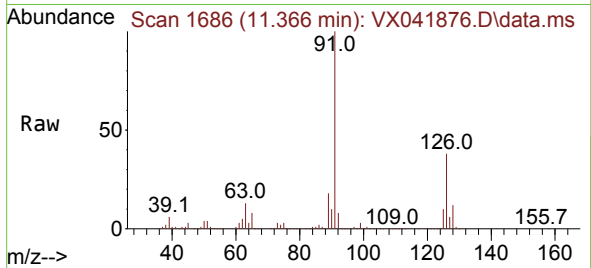




#75
 2-Chlorotoluene
 Concen: 151.013 ug/l
 RT: 11.366 min Scan# 1
 Delta R.T. 0.000 min
 Lab File: VX041876.D
 Acq: 14 Jun 2024 14:29

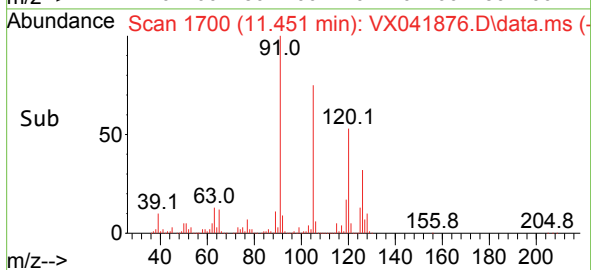
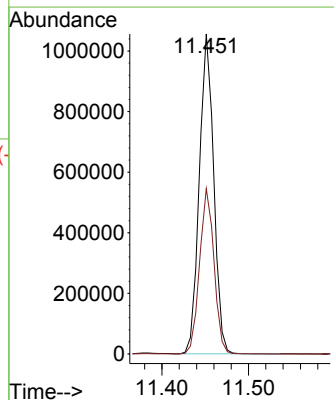
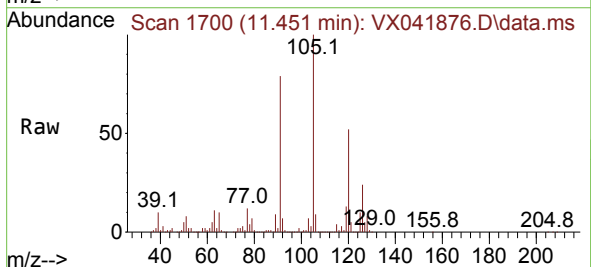
Instrument :
 MSVOA_X
 ClientSampleId :
 VSTDIC150

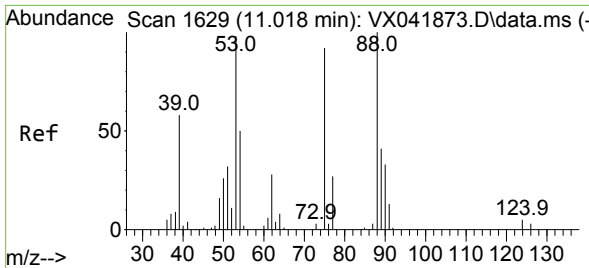
Tgt Ion: 91 Resp: 984586
 Ion Ratio Lower Upper
 91 100
 126 36.7 0.0 72.6



#76
 1,3,5-Trimethylbenzene
 Concen: 155.503 ug/l
 RT: 11.451 min Scan# 1700
 Delta R.T. 0.000 min
 Lab File: VX041876.D
 Acq: 14 Jun 2024 14:29

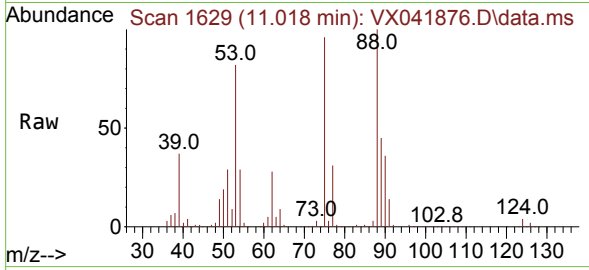
Tgt Ion: 105 Resp: 1217672
 Ion Ratio Lower Upper
 105 100
 120 51.7 0.0 103.0





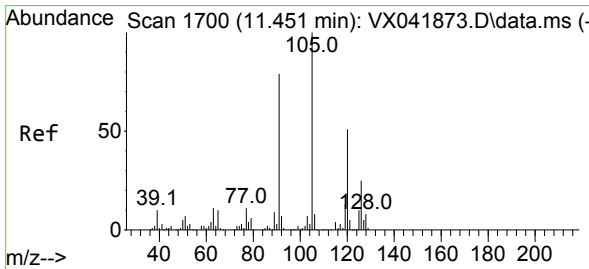
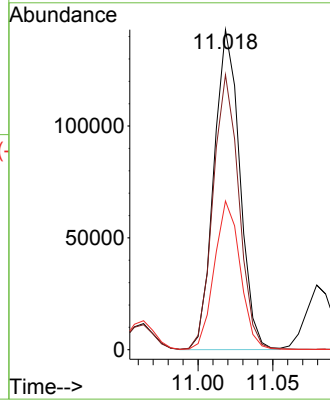
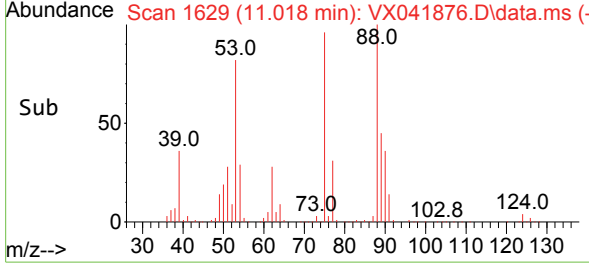
#77
 t-1,4-Dichloro-2-butene
 Concen: 177.835 ug/l
 RT: 11.018 min Scan# 1
 Delta R.T. 0.000 min
 Lab File: VX041876.D
 Acq: 14 Jun 2024 14:29

Instrument :
 MSVOA_X
 ClientSampleId :
 VSTDIC150

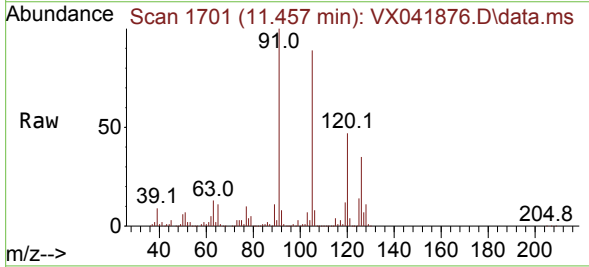


Tgt Ion: 75 Resp: 172365

Ion	Ratio	Lower	Upper
75	100		
53	85.9	53.4	160.2
89	46.4	22.5	67.5

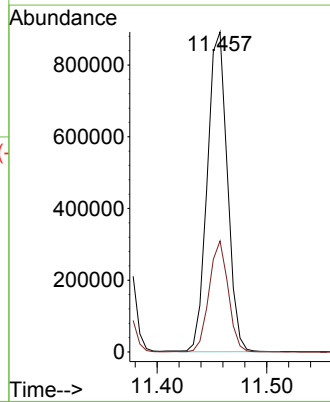
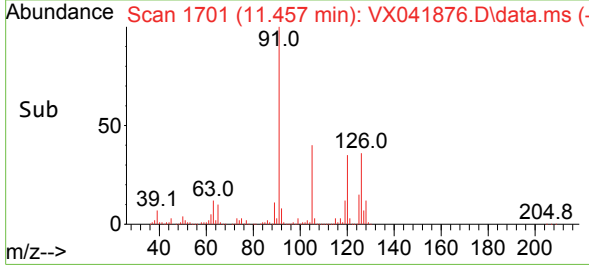


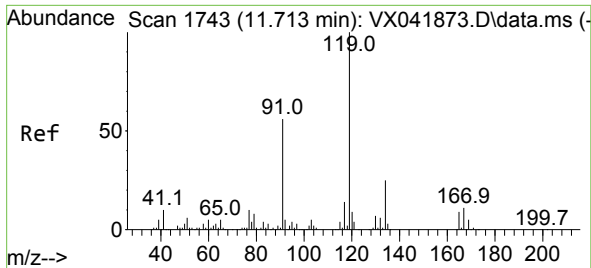
#78
 4-Chlorotoluene
 Concen: 155.872 ug/l
 RT: 11.457 min Scan# 1701
 Delta R.T. 0.006 min
 Lab File: VX041876.D
 Acq: 14 Jun 2024 14:29



Tgt Ion: 91 Resp: 1128949

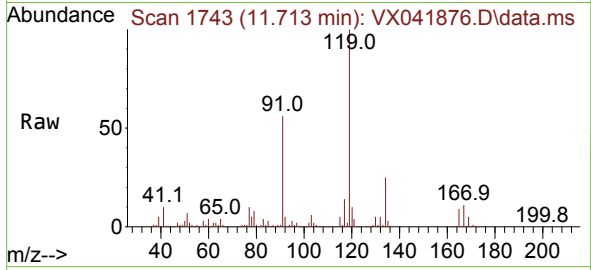
Ion	Ratio	Lower	Upper
91	100		
126	33.1	0.0	64.8



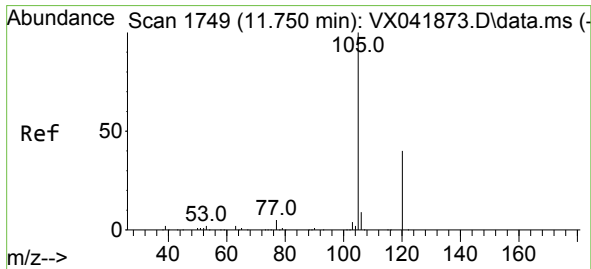
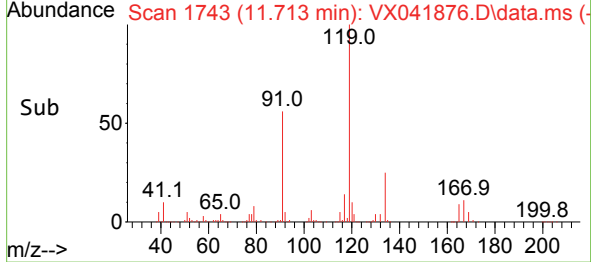
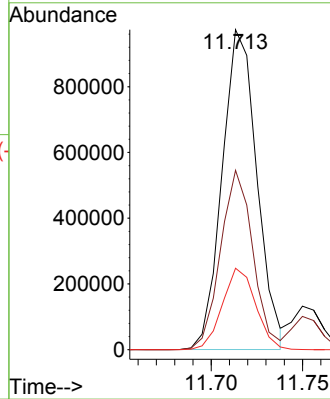


#79
 tert-butylbenzene
 Concen: 155.108 ug/l
 RT: 11.713 min Scan# 1743
 Delta R.T. 0.000 min
 Lab File: VX041876.D
 Acq: 14 Jun 2024 14:29

Instrument : MSVOA_X
 ClientSampleId : VSTDIC150

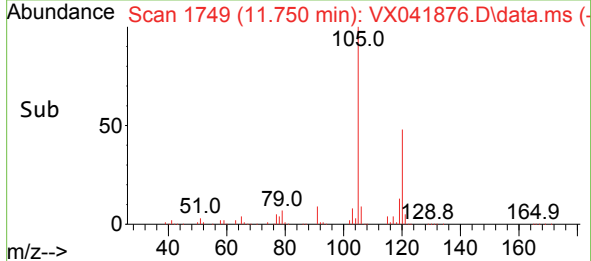
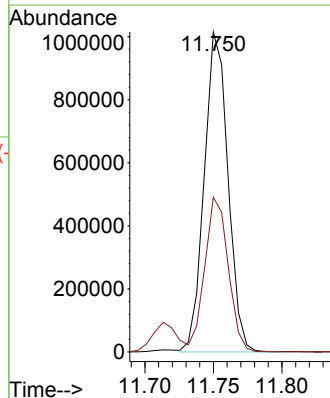
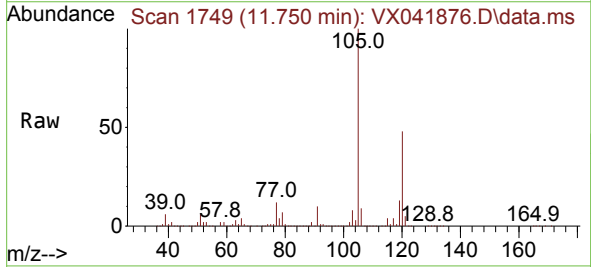


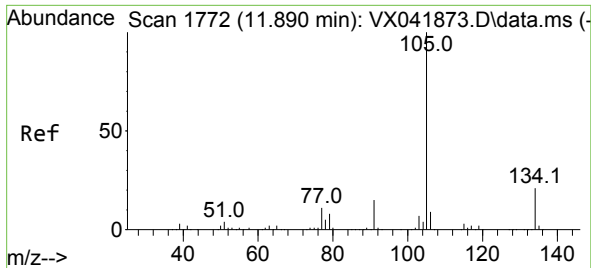
Tgt Ion:119 Resp: 1289242
 Ion Ratio Lower Upper
 119 100
 91 52.3 0.0 106.0
 134 24.4 0.0 49.4



#80
 1,2,4-Trimethylbenzene
 Concen: 156.318 ug/l
 RT: 11.750 min Scan# 1749
 Delta R.T. 0.000 min
 Lab File: VX041876.D
 Acq: 14 Jun 2024 14:29

Tgt Ion:105 Resp: 1222879
 Ion Ratio Lower Upper
 105 100
 120 47.6 0.0 96.2

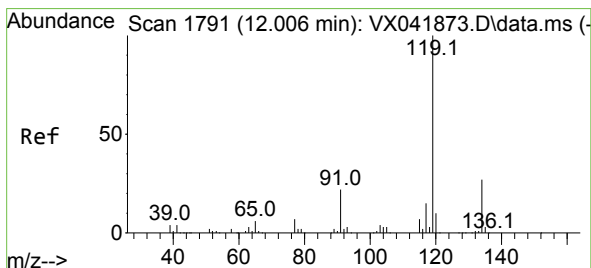
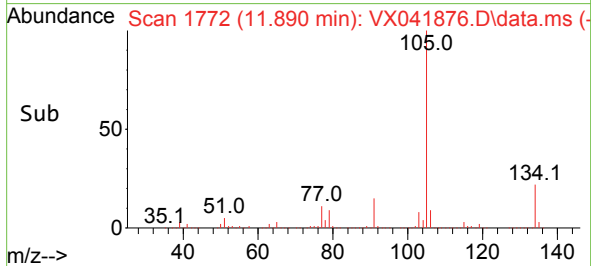
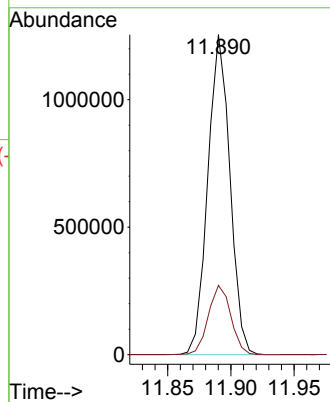
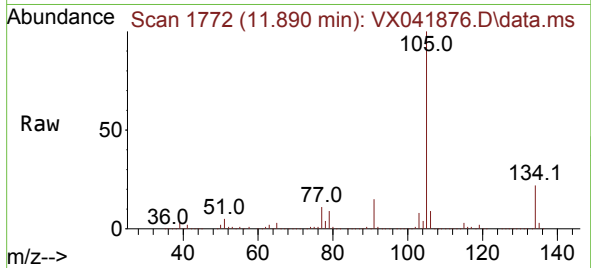




#81
 sec-Butylbenzene
 Concen: 157.237 ug/l
 RT: 11.890 min Scan# 1772
 Delta R.T. 0.000 min
 Lab File: VX041876.D
 Acq: 14 Jun 2024 14:29

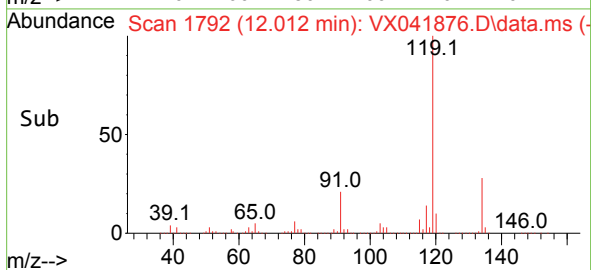
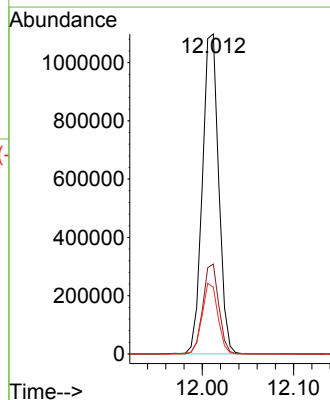
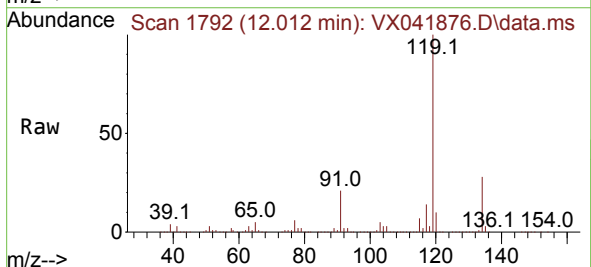
Instrument : MSVOA_X
 ClientSampleId : VSTDIC150

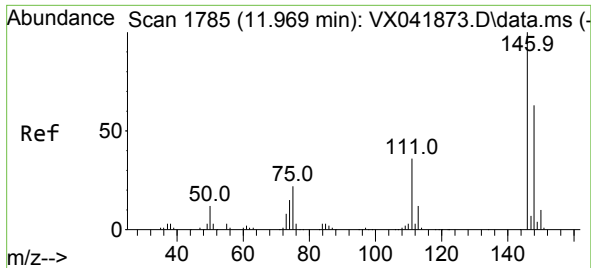
Tgt Ion:105 Resp: 1524360
 Ion Ratio Lower Upper
 105 100
 134 22.1 0.0 43.2



#82
 p-Isopropyltoluene
 Concen: 159.415 ug/l
 RT: 12.012 min Scan# 1792
 Delta R.T. 0.006 min
 Lab File: VX041876.D
 Acq: 14 Jun 2024 14:29

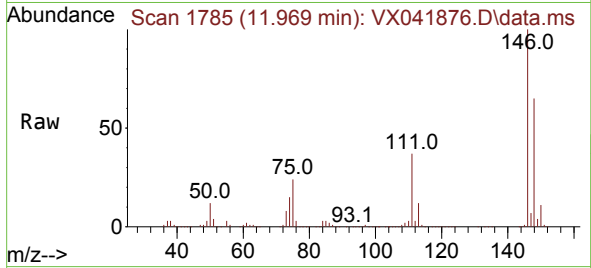
Tgt Ion:119 Resp: 1354315
 Ion Ratio Lower Upper
 119 100
 134 27.5 0.0 54.0
 91 21.5 0.0 42.2



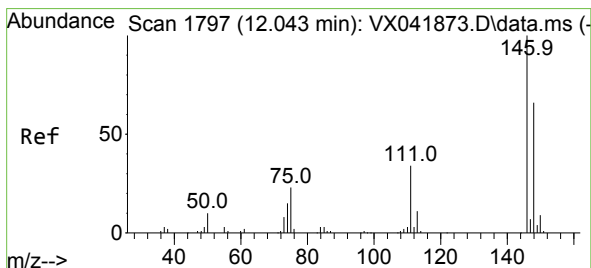
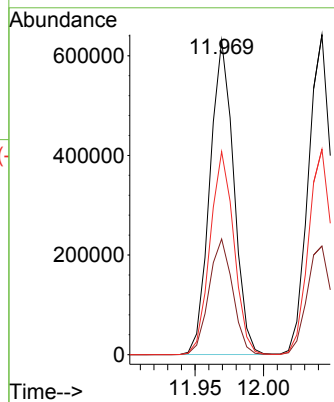
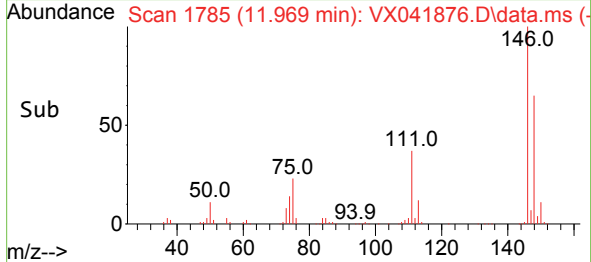


#83
 1,3-Dichlorobenzene
 Concen: 156.864 ug/l
 RT: 11.969 min Scan# 1785
 Delta R.T. 0.000 min
 Lab File: VX041876.D
 Acq: 14 Jun 2024 14:29

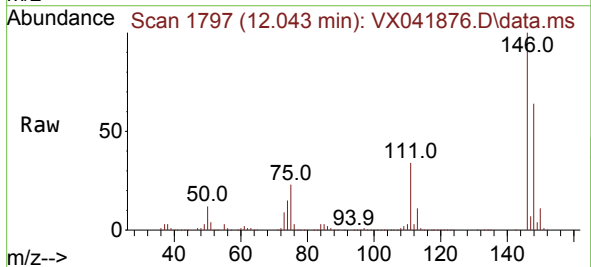
Instrument : MSVOA_X
 ClientSampleId : VSTDIC150



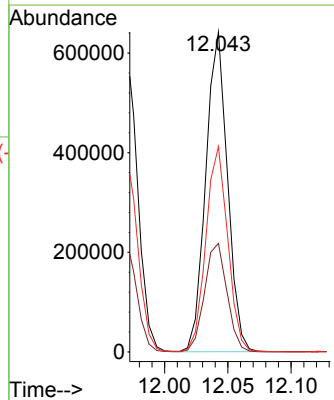
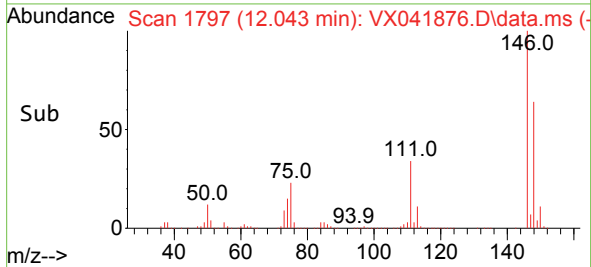
Tgt Ion:146 Resp: 762539
 Ion Ratio Lower Upper
 146 100
 111 36.7 18.0 54.0
 148 64.4 31.9 95.7

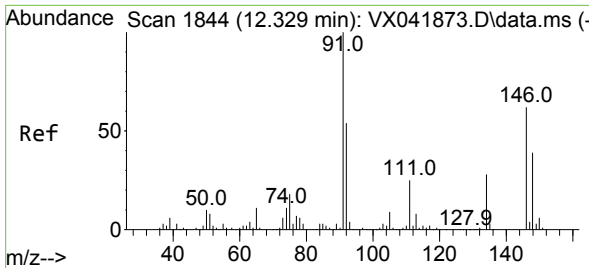


#84
 1,4-Dichlorobenzene
 Concen: 158.389 ug/l
 RT: 12.043 min Scan# 1797
 Delta R.T. 0.000 min
 Lab File: VX041876.D
 Acq: 14 Jun 2024 14:29



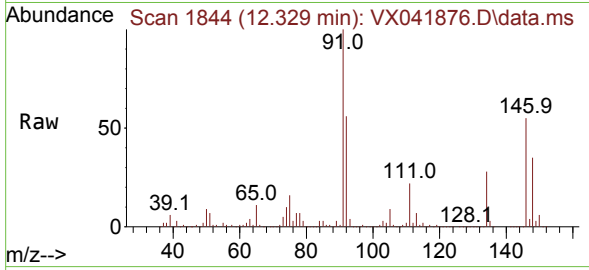
Tgt Ion:146 Resp: 766403
 Ion Ratio Lower Upper
 146 100
 111 35.2 17.4 52.3
 148 64.6 32.3 96.9



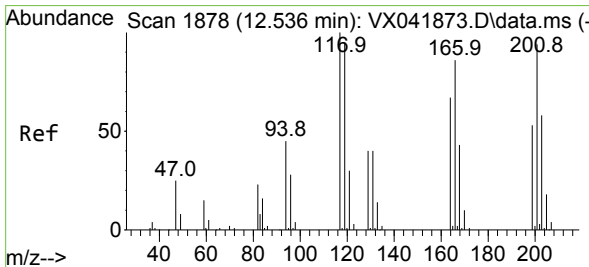
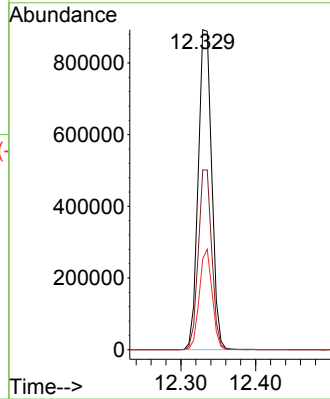
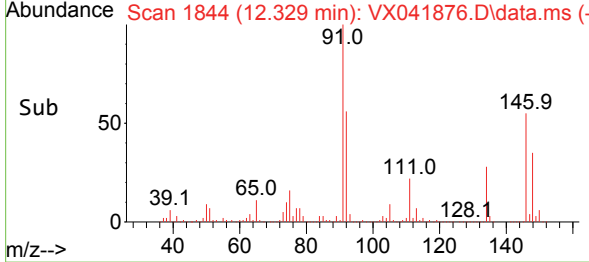


#85
 n-Butylbenzene
 Concen: 170.282 ug/l
 RT: 12.329 min Scan# 1844
 Delta R.T. 0.000 min
 Lab File: VX041876.D
 Acq: 14 Jun 2024 14:29

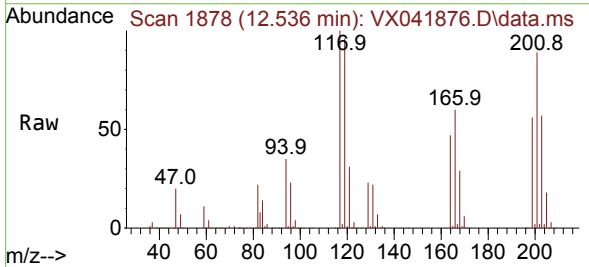
Instrument : MSVOA_X
 ClientSampleId : VSTDICC150



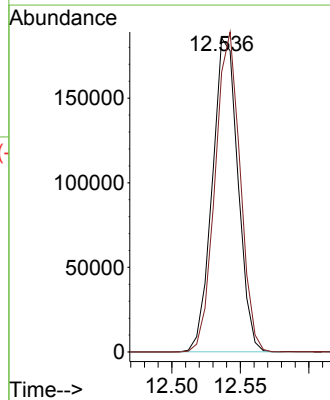
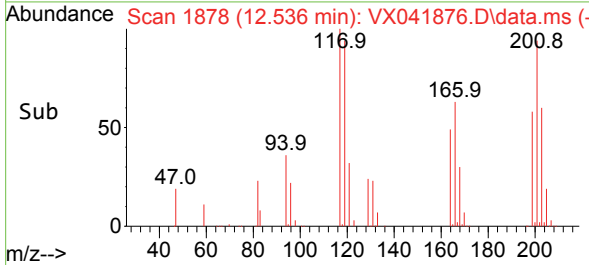
Tgt Ion: 91 Resp: 1118664
 Ion Ratio Lower Upper
 91 100
 92 55.9 0.0 109.8
 134 29.8 0.0 58.4

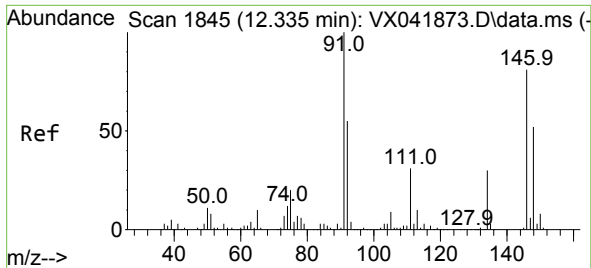


#86
 Hexachloroethane
 Concen: 173.660 ug/l
 RT: 12.536 min Scan# 1878
 Delta R.T. 0.000 min
 Lab File: VX041876.D
 Acq: 14 Jun 2024 14:29



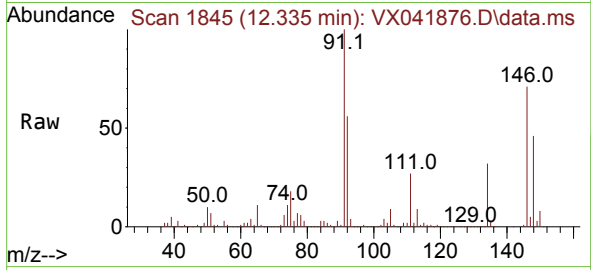
Tgt Ion: 117 Resp: 240935
 Ion Ratio Lower Upper
 117 100
 201 99.2 48.9 146.8



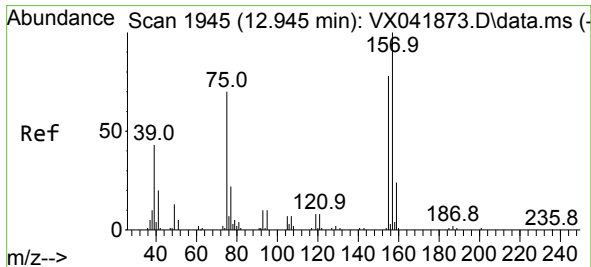
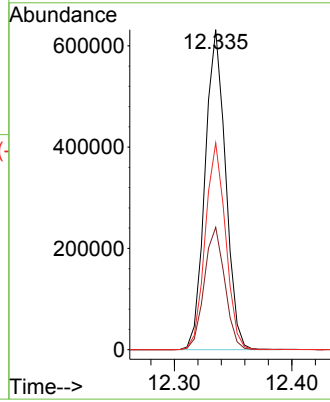
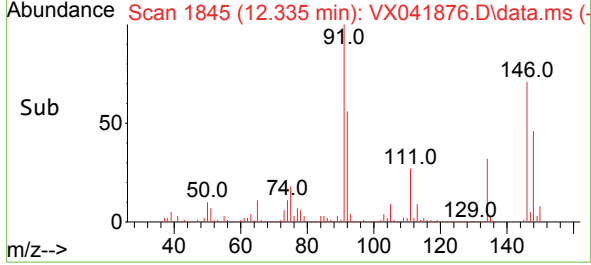


#87
 1,2-Dichlorobenzene
 Concen: 155.261 ug/l
 RT: 12.335 min Scan# 1845
 Delta R.T. 0.000 min
 Lab File: VX041876.D
 Acq: 14 Jun 2024 14:29

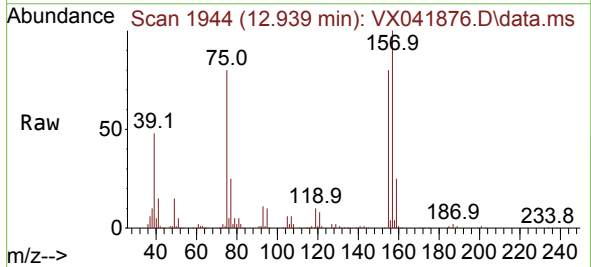
Instrument : MSVOA_X
 ClientSampleId : VSTDICC150



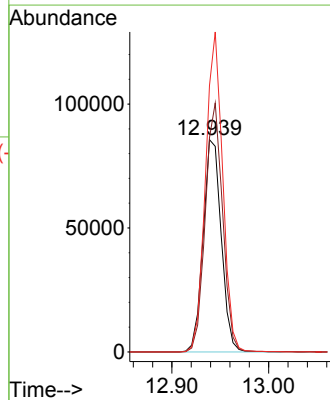
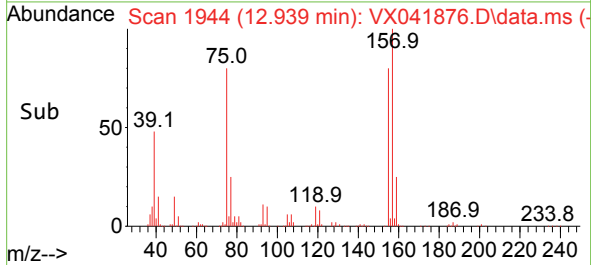
Tgt Ion:146 Resp: 763300
 Ion Ratio Lower Upper
 146 100
 111 38.3 19.1 57.3
 148 64.1 32.4 97.0

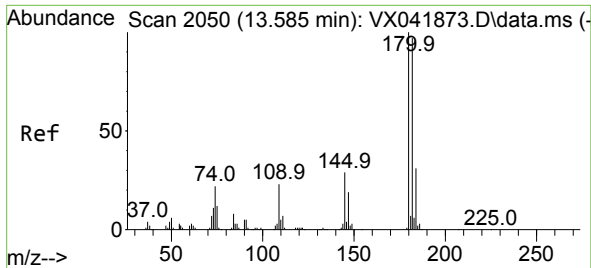


#88
 1,2-Dibromo-3-Chloropropane
 Concen: 167.133 ug/l
 RT: 12.939 min Scan# 1944
 Delta R.T. -0.006 min
 Lab File: VX041876.D
 Acq: 14 Jun 2024 14:29



Tgt Ion: 75 Resp: 111827
 Ion Ratio Lower Upper
 75 100
 155 112.2 88.6 133.0
 157 142.9 112.8 169.2





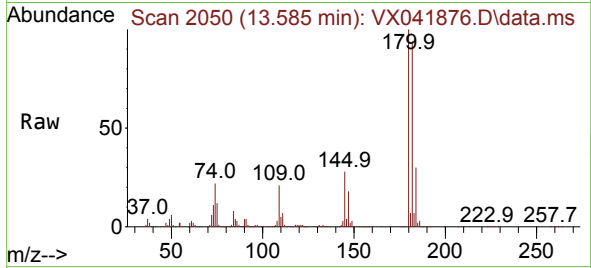
#89
 1,2,4-Trichlorobenzene
 Concen: 168.933 ug/l
 RT: 13.585 min Scan# 2050
 Delta R.T. 0.000 min
 Lab File: VX041876.D
 Acq: 14 Jun 2024 14:29

Instrument :

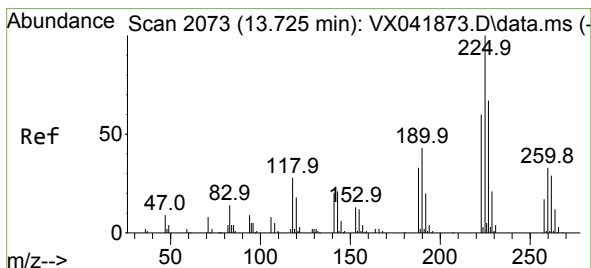
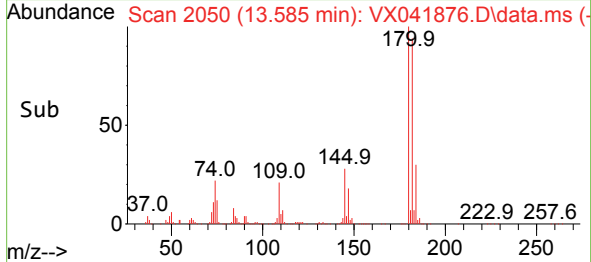
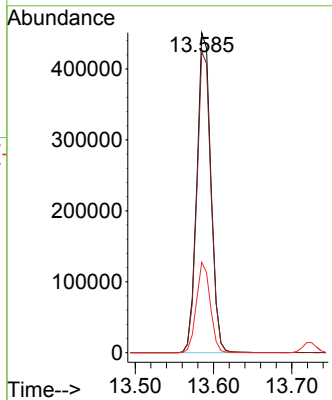
MSVOA_X

Client Sample Id :

VSTDIC150

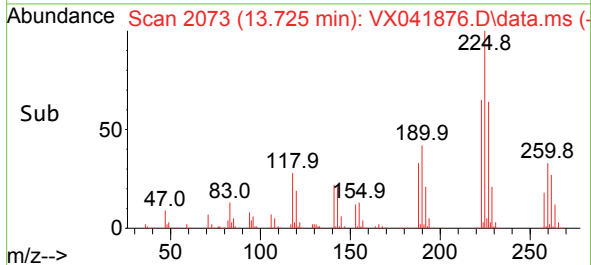
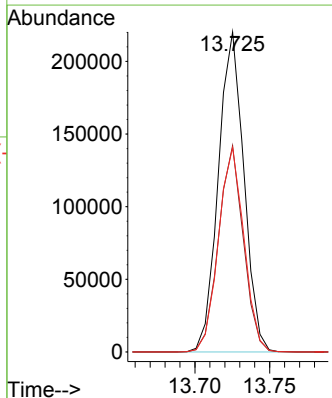
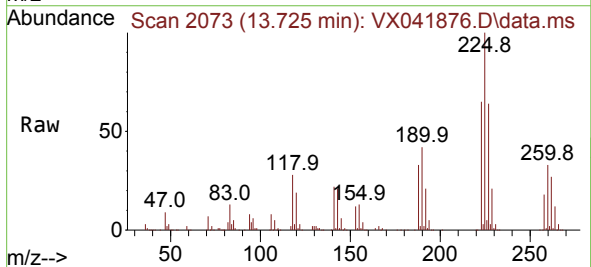


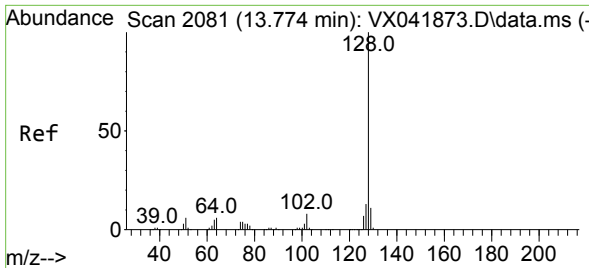
Tgt Ion:180 Resp: 562192
 Ion Ratio Lower Upper
 180 100
 182 95.1 76.9 115.3
 145 27.8 22.8 34.2



#90
 Hexachlorobutadiene
 Concen: 159.834 ug/l
 RT: 13.725 min Scan# 2073
 Delta R.T. 0.000 min
 Lab File: VX041876.D
 Acq: 14 Jun 2024 14:29

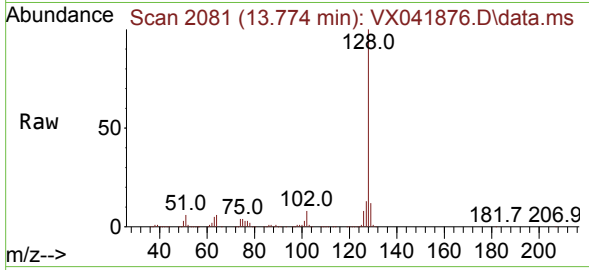
Tgt Ion:225 Resp: 262105
 Ion Ratio Lower Upper
 225 100
 223 62.7 0.0 120.8
 227 63.6 0.0 126.6



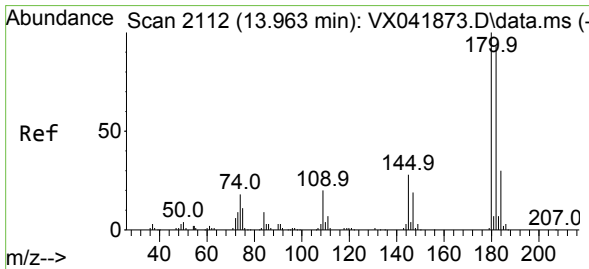
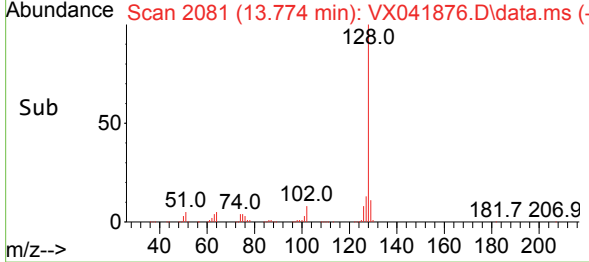
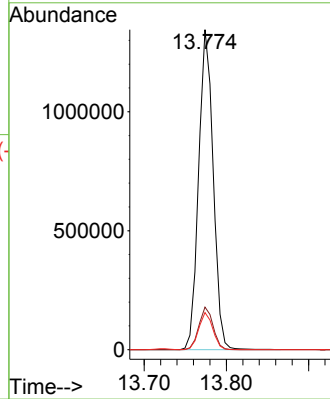


#91
 Naphthalene
 Concen: 164.311 ug/l
 RT: 13.774 min Scan# 2081
 Delta R.T. 0.000 min
 Lab File: VX041876.D
 Acq: 14 Jun 2024 14:29

Instrument : MSVOA_X
 ClientSampleId : VSTDIC150



Tgt Ion:128 Resp: 1652215
 Ion Ratio Lower Upper
 128 100
 127 13.0 10.4 15.6
 129 11.3 8.7 13.1



#92
 1,2,3-Trichlorobenzene
 Concen: 163.907 ug/l
 RT: 13.963 min Scan# 2112
 Delta R.T. 0.000 min
 Lab File: VX041876.D
 Acq: 14 Jun 2024 14:29

Tgt Ion:180 Resp: 564908
 Ion Ratio Lower Upper
 180 100
 182 95.2 0.0 187.8
 145 29.7 0.0 58.4

