

Data Path : Z:\voasrv\HPCHEM1\MSVOA\_X\Data\VX061424\  
 Data File : VX041891.D  
 Acq On : 14 Jun 2024 20:31  
 Operator : JC/MD  
 Sample : P2806-02  
 Misc : 5.0mL/MSVOA\_X/WATER  
 ALS Vial : 26 Sample Multiplier: 1

Instrument :  
 MSVOA\_X  
 ClientSampleId :

Quant Time: Jun 15 04:16:46 2024  
 Quant Method : Z:\voasrv\HPCHEM1\MSVOA\_X\Method\624X061424W.M  
 Quant Title : METHOD 624 VOLATILE ORGANIC ANALYSIS  
 QLast Update : Sat Jun 15 04:02:59 2024  
 Response via : Initial Calibration

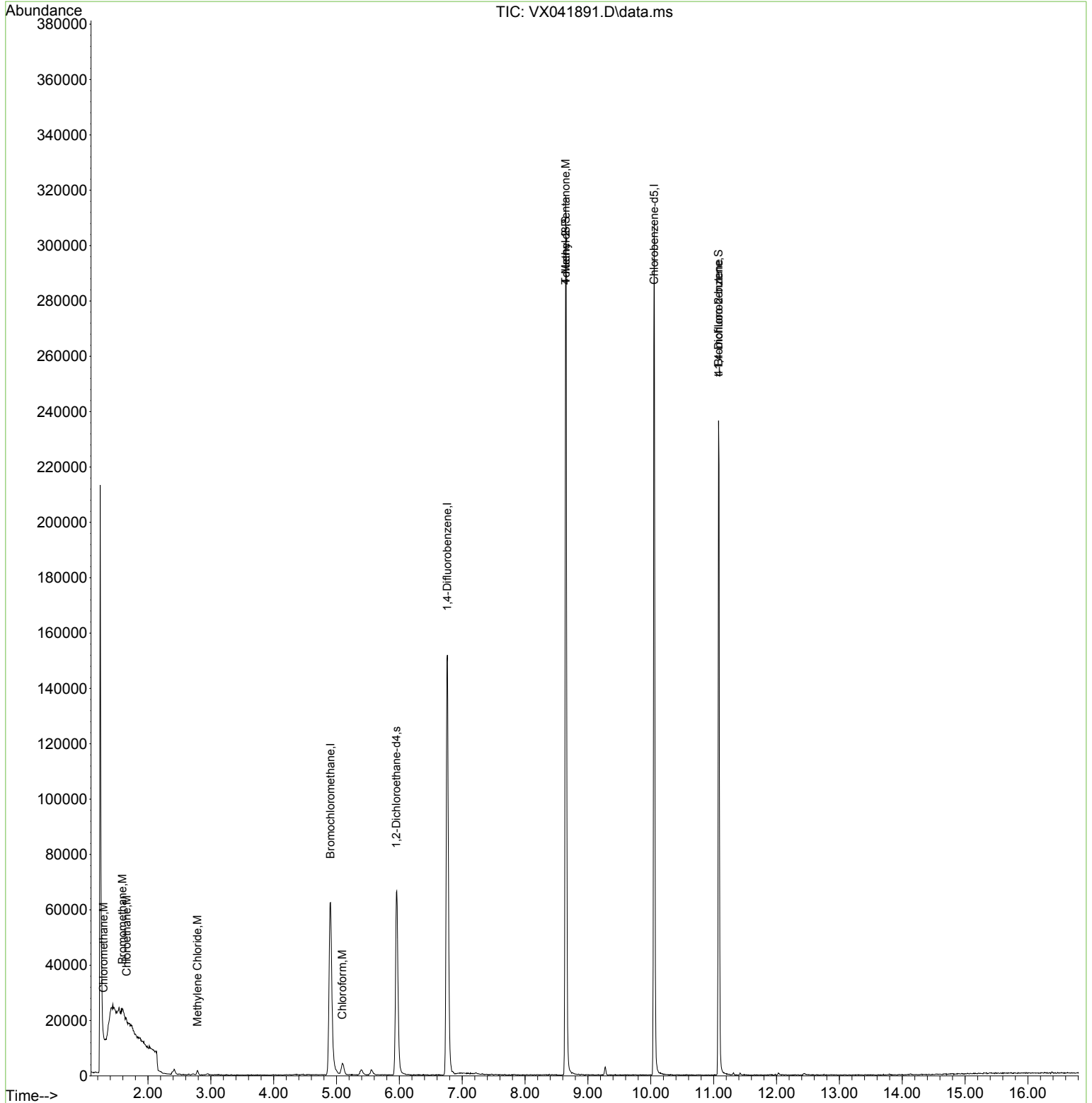
Compound	R.T.	QIon	Response	Conc	Units	Dev(Min)
-----						
Internal Standards						
1) Bromochloromethane	4.904	128	32741	30.000	ug/l	0.00
28) 1,4-Difluorobenzene	6.763	114	170655	30.000	ug/l	0.00
57) Chlorobenzene-d5	10.055	117	152209	30.000	ug/l	0.00
System Monitoring Compounds						
27) 1,2-Dichloroethane-d4	5.952	65	64602	28.663	ug/l	0.00
Spiked Amount	30.000	Range	91 - 110	Recovery	=	95.533%
60) 4-Bromofluorobenzene	11.079	95	64154	27.229	ug/l	0.00
Spiked Amount	30.000	Range	63 - 112	Recovery	=	90.767%
63) Toluene-d8	8.647	98	198351	30.459	ug/l	0.00
Spiked Amount	30.000	Range	91 - 112	Recovery	=	101.533%
Target Compounds						
						Qvalue
3) Chloromethane	1.294	50	488	0.206	ug/l #	82
5) Bromomethane	1.593	94	337	0.272	ug/l #	63
6) Chloroethane	1.660	64	3650	3.687	ug/l #	48
18) Methylene Chloride	2.788	84	812	0.354	ug/l	90
25) Chloroform	5.093	83	5584	1.540	ug/l	92
58) 4-Methyl-2-Pentanone	8.647	43	725	0.266	ug/l #	1
77) t-1,4-Dichloro-2-butene	11.079	75	28927	32.854	ug/l #	7
-----						

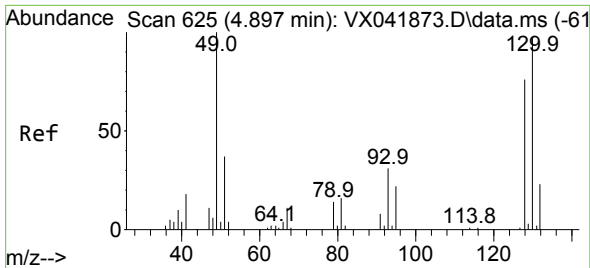
(#) = qualifier out of range (m) = manual integration (+) = signals summed

Data Path : Z:\voasrv\HPCHEM1\MSVOA\_X\Data\VX061424\  
 Data File : VX041891.D  
 Acq On : 14 Jun 2024 20:31  
 Operator : JC/MD  
 Sample : P2806-02  
 Misc : 5.0mL/MSVOA\_X/WATER  
 ALS Vial : 26 Sample Multiplier: 1

Instrument :  
 MSVOA\_X  
 ClientSampleId :

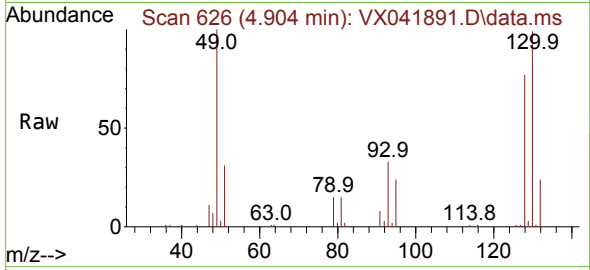
Quant Time: Jun 15 04:16:46 2024  
 Quant Method : Z:\voasrv\HPCHEM1\MSVOA\_X\Method\624X061424W.M  
 Quant Title : METHOD 624 VOLATILE ORGANIC ANALYSIS  
 QLast Update : Sat Jun 15 04:02:59 2024  
 Response via : Initial Calibration





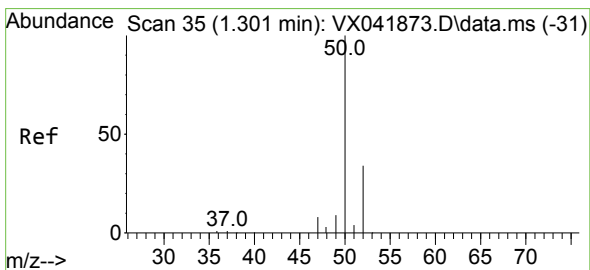
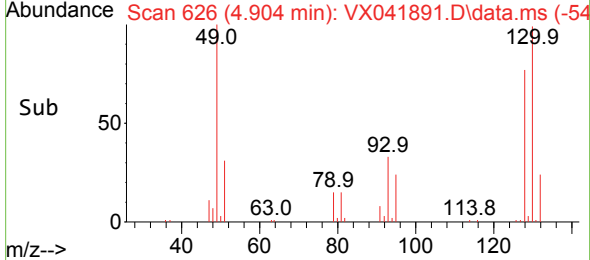
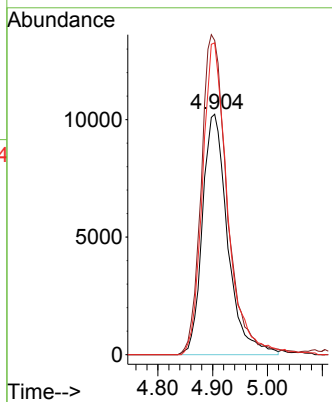
#1  
 Bromochloromethane  
 Concen: 30.000 ug/l  
 RT: 4.904 min Scan# 61  
 Delta R.T. 0.007 min  
 Lab File: VX041891.D  
 Acq: 14 Jun 2024 20:31

Instrument :  
 MSVOA\_X  
 ClientSampleId :



Tgt Ion:128 Resp: 32741

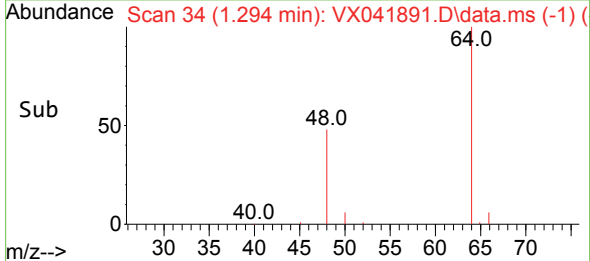
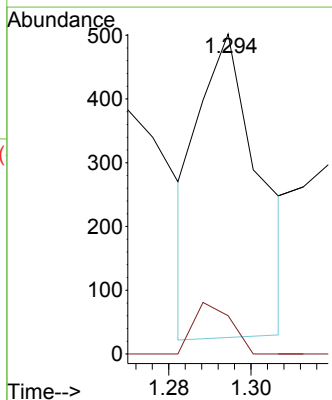
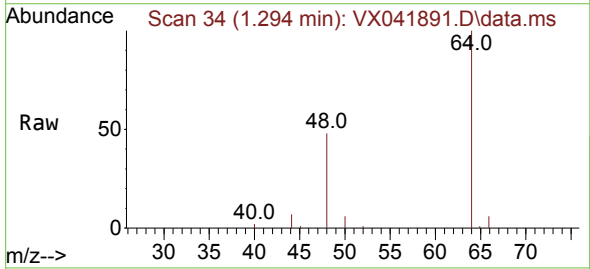
Ion	Ratio	Lower	Upper
128	100		
49	137.1	0.0	338.5
130	128.6	0.0	324.5

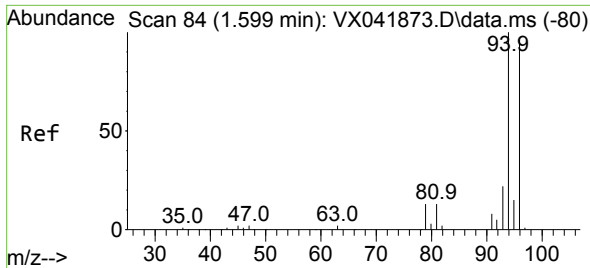


#3  
 Chloromethane  
 Concen: 0.206 ug/l  
 RT: 1.294 min Scan# 34  
 Delta R.T. -0.006 min  
 Lab File: VX041891.D  
 Acq: 14 Jun 2024 20:31

Tgt Ion: 50 Resp: 488

Ion	Ratio	Lower	Upper
50	100		
52	23.6	26.9	40.3#

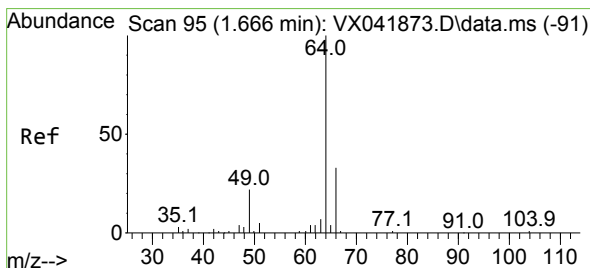
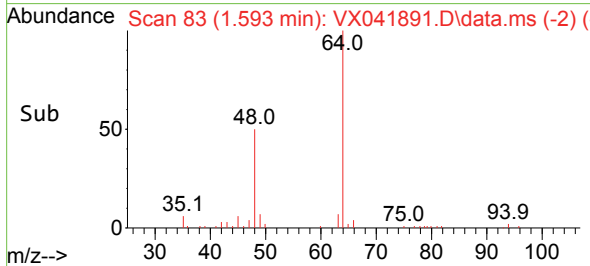
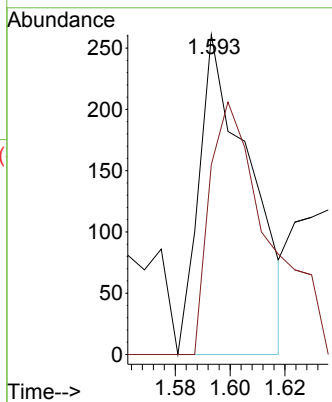
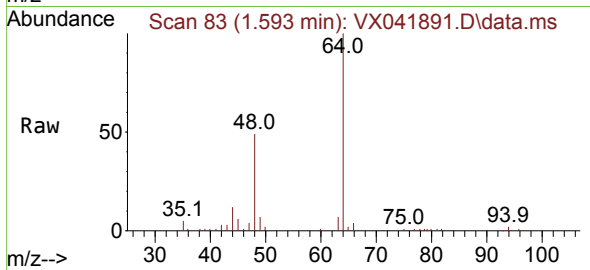




#5  
 Bromomethane  
 Concen: 0.272 ug/l  
 RT: 1.593 min Scan# 81  
 Delta R.T. -0.006 min  
 Lab File: VX041891.D  
 Acq: 14 Jun 2024 20:31

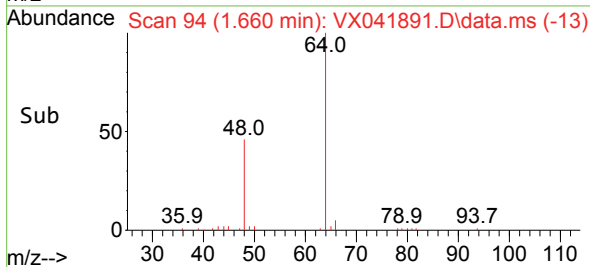
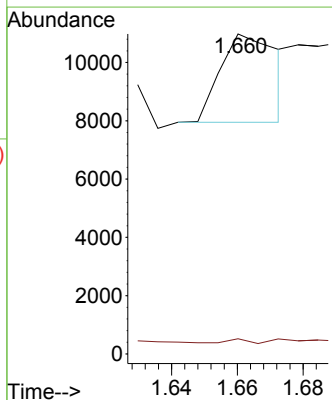
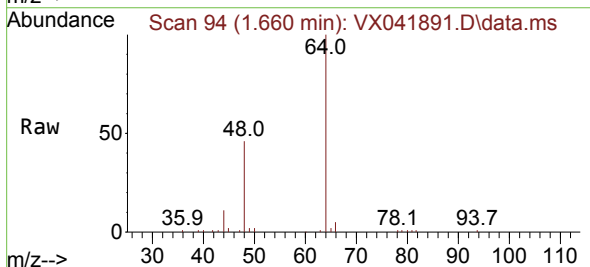
Instrument :  
 MSVOA\_X  
 ClientSampleId :

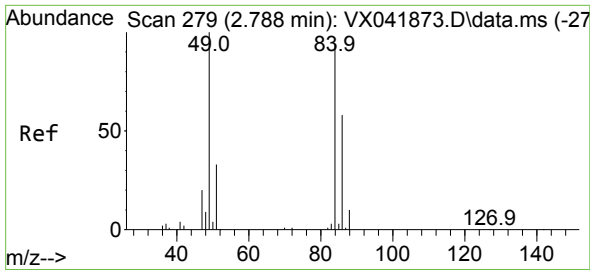
Tgt Ion: 94 Resp: 337  
 Ion Ratio Lower Upper  
 94 100  
 96 59.4 76.6 115.0#



#6  
 Chloroethane  
 Concen: 3.687 ug/l  
 RT: 1.660 min Scan# 94  
 Delta R.T. -0.006 min  
 Lab File: VX041891.D  
 Acq: 14 Jun 2024 20:31

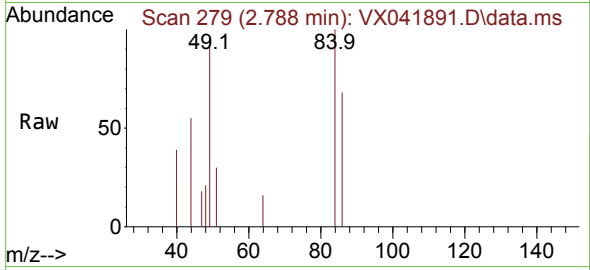
Tgt Ion: 64 Resp: 3650  
 Ion Ratio Lower Upper  
 64 100  
 66 3.8 26.4 39.6#





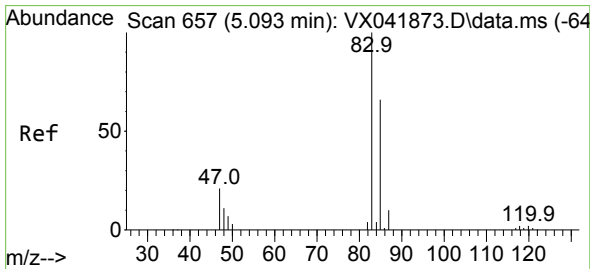
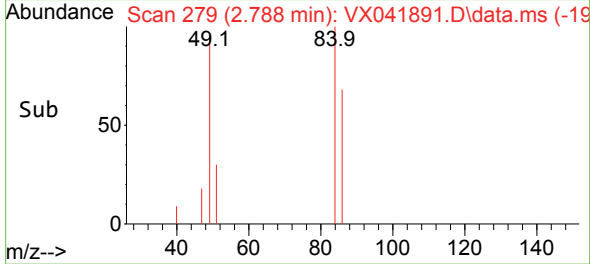
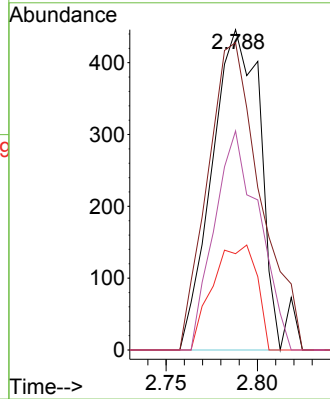
#18  
 Methylene Chloride  
 Concen: 0.354 ug/l  
 RT: 2.788 min Scan# 21  
 Delta R.T. -0.000 min  
 Lab File: VX041891.D  
 Acq: 14 Jun 2024 20:31

Instrument :  
 MSVOA\_X  
 ClientSampleId :



Tgt Ion: 84 Resp: 812

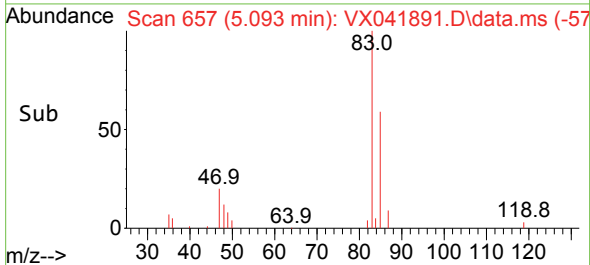
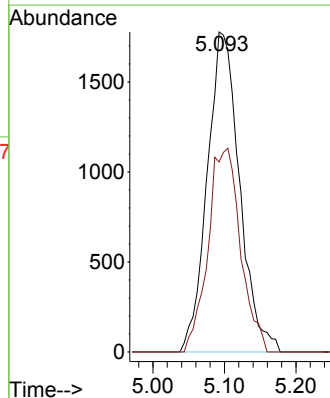
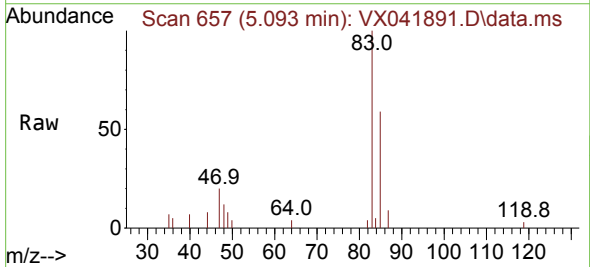
Ion	Ratio	Lower	Upper
84	100		
49	96.0	85.3	127.9
51	30.0	28.5	42.7
86	68.4	49.6	74.4

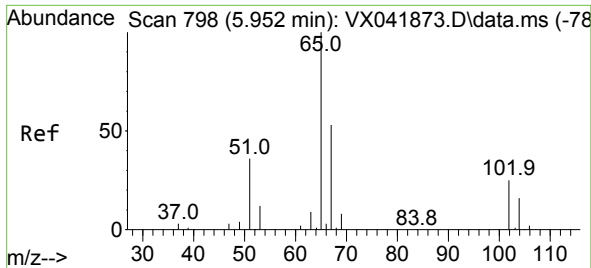


#25  
 Chloroform  
 Concen: 1.540 ug/l  
 RT: 5.093 min Scan# 657  
 Delta R.T. -0.000 min  
 Lab File: VX041891.D  
 Acq: 14 Jun 2024 20:31

Tgt Ion: 83 Resp: 5584

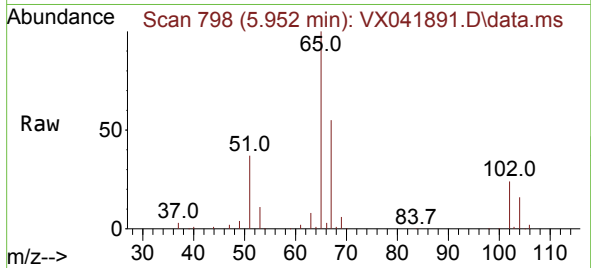
Ion	Ratio	Lower	Upper
83	100		
85	59.4	52.7	79.1



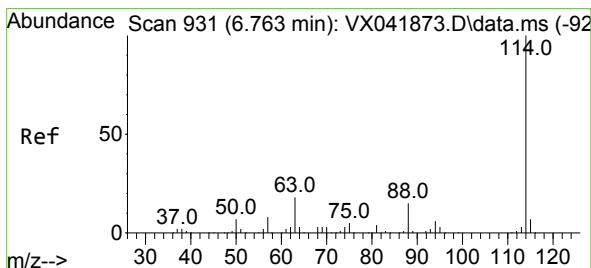
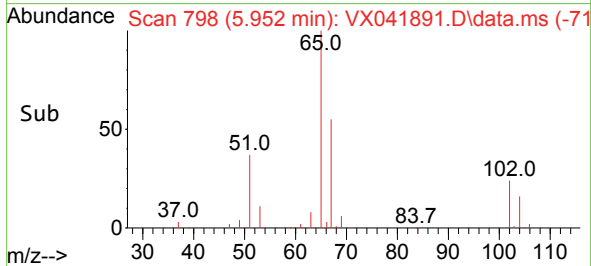
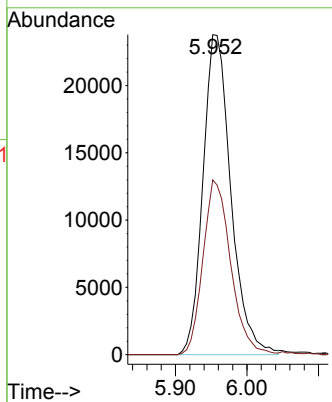


#27  
 1,2-Dichloroethane-d4  
 Concen: 28.663 ug/l  
 RT: 5.952 min Scan# 798  
 Delta R.T. -0.000 min  
 Lab File: VX041891.D  
 Acq: 14 Jun 2024 20:31

Instrument : MSVOA\_X  
 ClientSampleId :

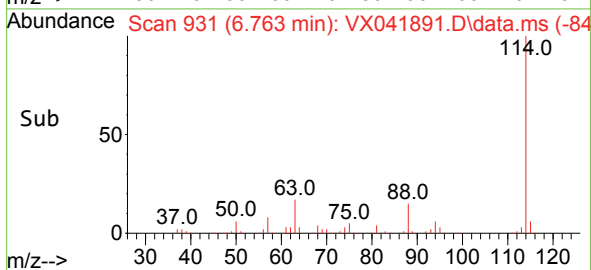
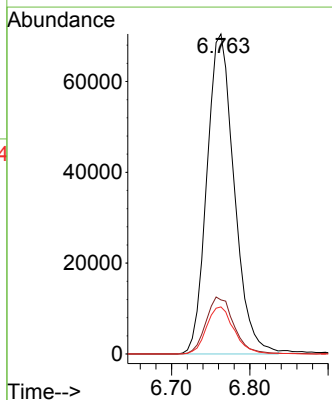
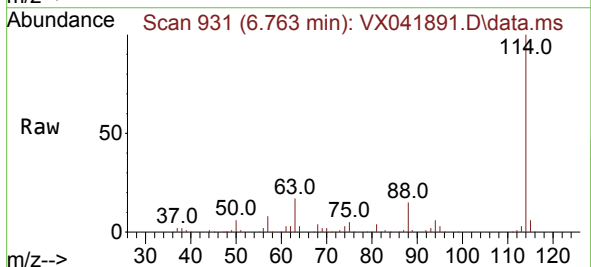


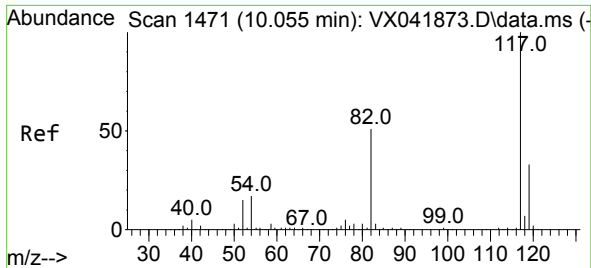
Tgt Ion: 65 Resp: 64602  
 Ion Ratio Lower Upper  
 65 100  
 67 54.1 43.4 65.0



#28  
 1,4-Difluorobenzene  
 Concen: 30.000 ug/l  
 RT: 6.763 min Scan# 931  
 Delta R.T. -0.000 min  
 Lab File: VX041891.D  
 Acq: 14 Jun 2024 20:31

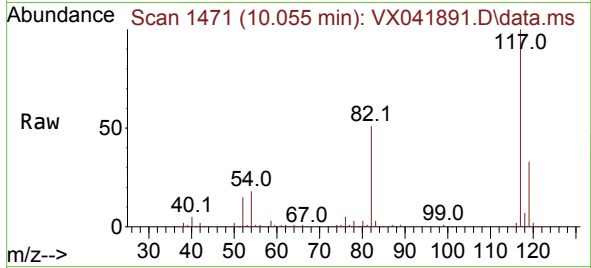
Tgt Ion: 114 Resp: 170655  
 Ion Ratio Lower Upper  
 114 100  
 63 18.2 14.6 21.8  
 88 14.7 11.8 17.8



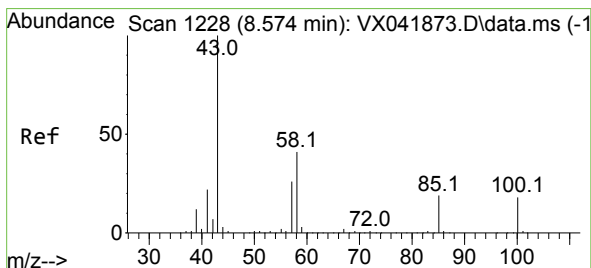
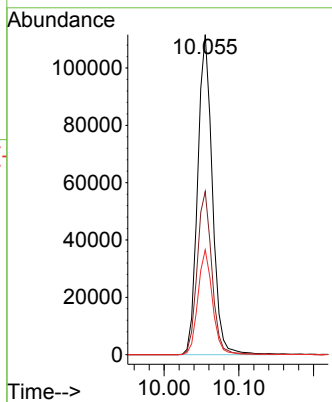
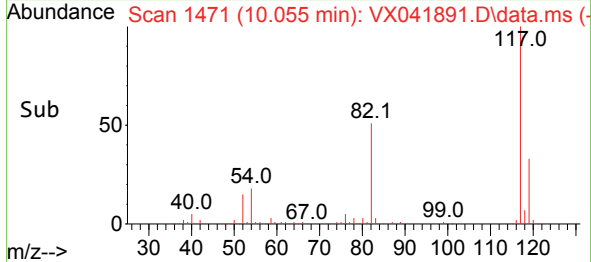


#57  
 Chlorobenzene-d5  
 Concen: 30.000 ug/l  
 RT: 10.055 min Scan# 14  
 Delta R.T. -0.000 min  
 Lab File: VX041891.D  
 Acq: 14 Jun 2024 20:31

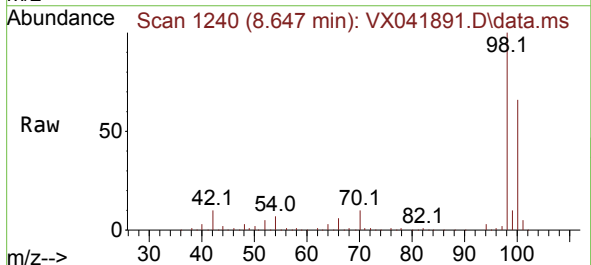
Instrument :  
 MSVOA\_X  
 ClientSampleId :



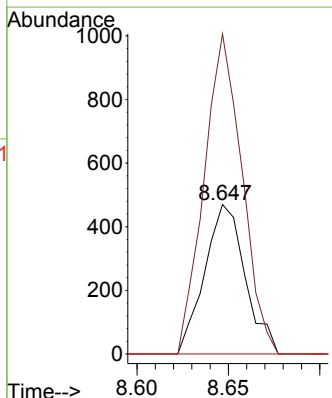
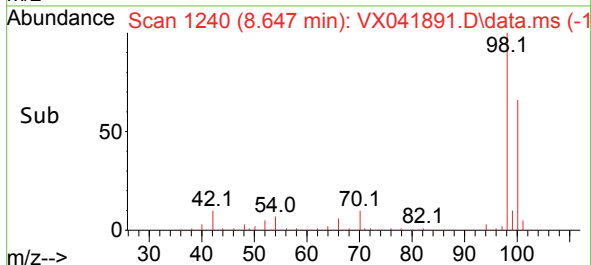
Tgt Ion:117 Resp: 152209  
 Ion Ratio Lower Upper  
 117 100  
 82 51.1 41.1 61.7  
 119 32.3 26.1 39.1

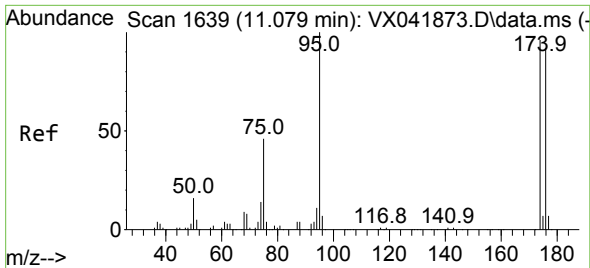


#58  
 4-Methyl-2-Pentanone  
 Concen: 0.266 ug/l  
 RT: 8.647 min Scan# 1240  
 Delta R.T. 0.073 min  
 Lab File: VX041891.D  
 Acq: 14 Jun 2024 20:31



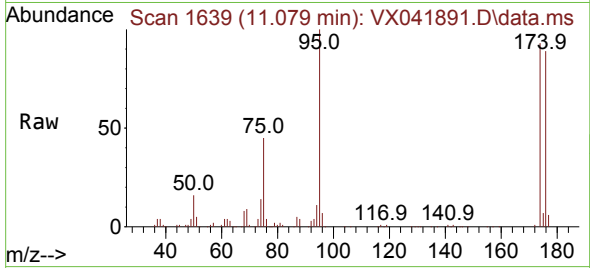
Tgt Ion: 43 Resp: 725  
 Ion Ratio Lower Upper  
 43 100  
 58 200.7 33.2 49.8#  
 85 0.0 15.5 23.3#



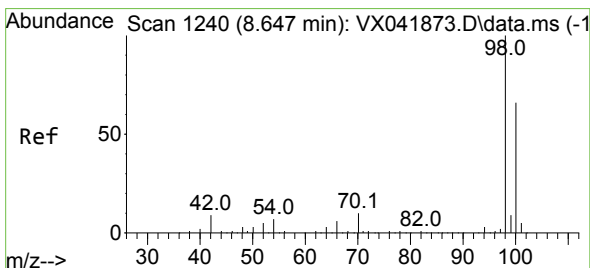
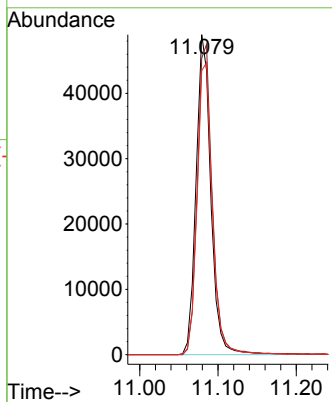
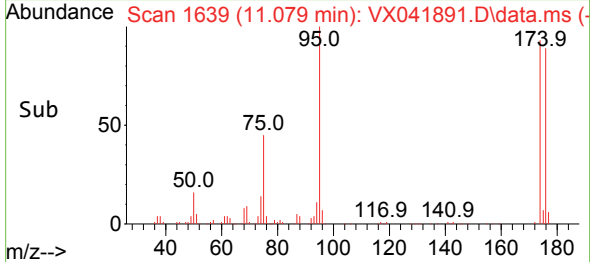


#60  
 4-Bromofluorobenzene  
 Concen: 27.229 ug/l  
 RT: 11.079 min Scan# 1639  
 Delta R.T. -0.000 min  
 Lab File: VX041891.D  
 Acq: 14 Jun 2024 20:31

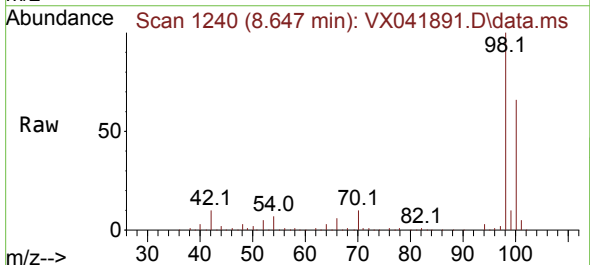
Instrument : MSVOA\_X  
 ClientSampleId :



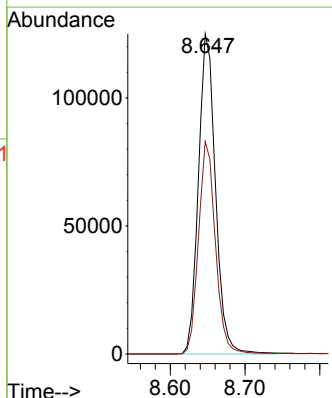
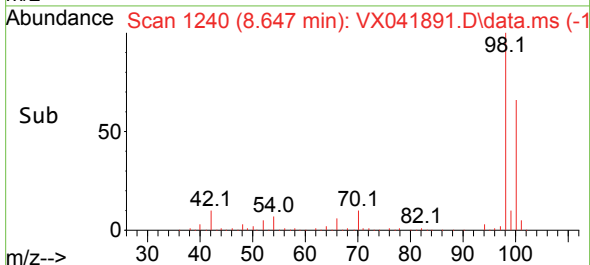
Tgt Ion: 95 Resp: 64154  
 Ion Ratio Lower Upper  
 95 100  
 174 98.8 78.9 118.3  
 176 94.1 77.1 115.7



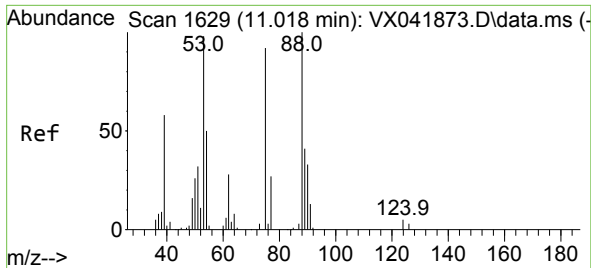
#63  
 Toluene-d8  
 Concen: 30.459 ug/l  
 RT: 8.647 min Scan# 1240  
 Delta R.T. -0.000 min  
 Lab File: VX041891.D  
 Acq: 14 Jun 2024 20:31



Tgt Ion: 98 Resp: 198351  
 Ion Ratio Lower Upper  
 98 100  
 100 65.7 52.7 79.1

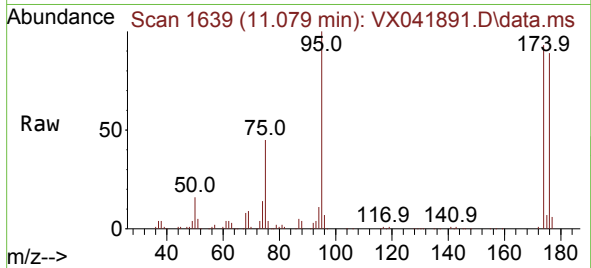






#77  
 t-1,4-Dichloro-2-butene  
 Concen: 32.854 ug/l  
 RT: 11.079 min Scan# 1  
 Delta R.T. 0.061 min  
 Lab File: VX041891.D  
 Acq: 14 Jun 2024 20:31

Instrument :  
 MSVOA\_X  
 ClientSampleId :



Tgt Ion: 75 Resp: 28927  
 Ion Ratio Lower Upper  
 75 100  
 53 0.0 53.4 160.2#  
 89 0.0 22.5 67.5#

