

Data Path : Z:\VOASRV\HPCHEM1\MSVOA X\DATA\VX061620\
 Data File : VX016770.D
 Acq On : 16 Jun 2020 11:37
 Operator : JC/SP
 Sample : VX0616WBL01
 Misc : 5.0mL/MSVOA X/WATER
 ALS Vial : 3 Sample Multiplier: 1

Instrument :
 MSVOA_X
 ClientSampleId :
 VX0616WBL01

Quant Time: Jun 17 03:54:13 2020
 Quant Method : Z:\VOASRV\HPCHEM1\MSVOA_X\METHOD\82X061520W.M
 Quant Title : SW846 8260
 QLast Update : Tue Jun 16 02:02:35 2020
 Response via : Initial Calibration

Internal Standards	R.T.	QIon	Response	Conc	Units	Dev(Min)
1) Pentafluorobenzene	5.63	168	254251	50.00	ug/l	0.00
34) 1,4-Difluorobenzene	6.83	114	388437	50.00	ug/l	0.00
63) Chlorobenzene-d5	10.10	117	385338	50.00	ug/l	0.00
72) 1,4-Dichlorobenzene-d4	12.06	152	183269	50.00	ug/l	0.00

System Monitoring Compounds

33) 1,2-Dichloroethane-d4	6.03	65	141807	49.59	ug/l	0.00
Spiked Amount	50.000		Recovery	=	99.18%	
35) Dibromofluoromethane	5.46	113	118537	49.46	ug/l	0.00
Spiked Amount	50.000		Recovery	=	98.92%	
50) Toluene-d8	8.70	98	478332	54.13	ug/l	0.00
Spiked Amount	50.000		Recovery	=	108.26%	
62) 4-Bromofluorobenzene	11.12	95	183562	54.31	ug/l	0.00
Spiked Amount	50.000		Recovery	=	108.62%	

Target Compounds

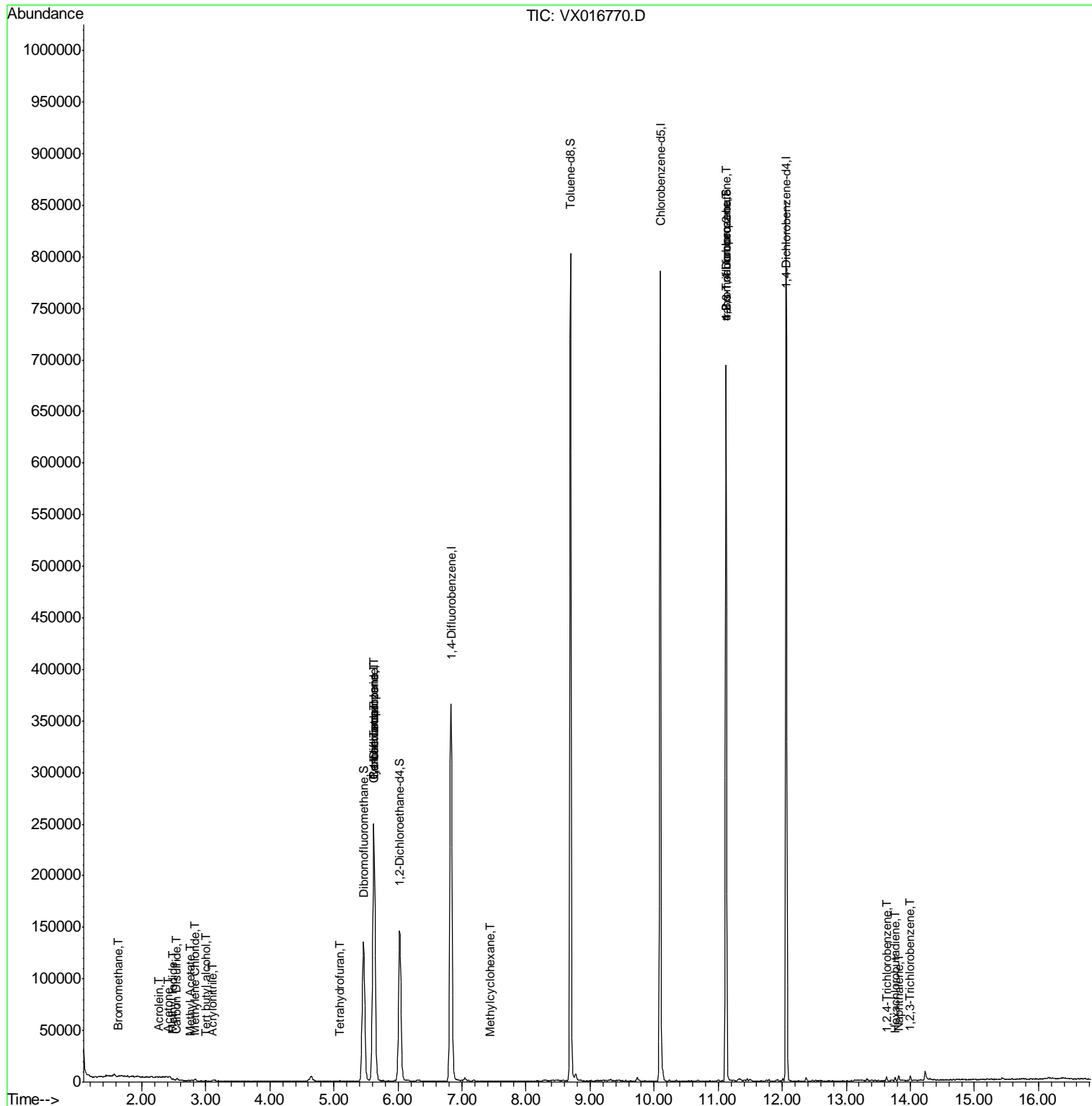
						Qvalue
5) Bromomethane	1.64	94	852	0.463	ug/l #	71
10) Methyl Iodide	2.49	142	788	0.291	ug/l #	88
11) Tert butyl alcohol	3.00	59	165	0.230	ug/l #	73
13) Acrolein	2.28	56	634	4.359	ug/l	85
15) Acrylonitrile	3.11	53	699	0.479	ug/l #	92
16) Acetone	2.41	43	797	0.614	ug/l	89
17) Carbon Disulfide	2.55	76	2106	0.296	ug/l #	90
18) Methyl Acetate	2.75	43	793	0.229	ug/l #	75
20) Methylene Chloride	2.84	84	622	0.223	ug/l #	78
29) Tetrahydrofuran	5.09	42	370	0.292	ug/l #	28
31) Cyclohexane	5.64	56	4237	1.831	ug/l #	1
36) 1,1-Dichloropropene	5.62	75	17543	5.111	ug/l #	49
38) Carbon Tetrachloride	5.63	117	23830	6.113	ug/l #	16
39) Methylcyclohexane	7.45	83	33	0.961	ug/l #	19
76) 1,2,3-Trichloropropane	11.12	75	87678	22.750	ug/l #	37
81) trans-1,4-Dichloro-2-buten	11.12	75	87678	57.271	ug/l #	13
93) 1,2,4-Trichlorobenzene	13.63	180	1083	0.269	ug/l	96
94) Hexachlorobutadiene	13.77	225	671	0.790	ug/l	87
95) Naphthalene	13.82	128	3087	0.245	ug/l	99
96) 1,2,3-Trichlorobenzene	14.00	180	1157	0.292	ug/l	89

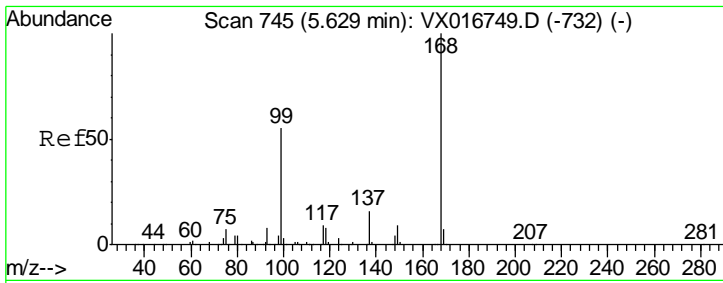
(#) = qualifier out of range (m) = manual integration (+) = signals summed

Data Path : Z:\VOASRV\HPCHEM1\MSVOA X\DATA\VX061620\
 Data File : VX016770.D
 Acq On : 16 Jun 2020 11:37
 Operator : JC/SP
 Sample : VX0616WBL01
 Misc : 5.0mL/MSVOA X/WATER
 ALS Vial : 3 Sample Multiplier: 1

Instrument :
 MSVOA_X
 Client Sampled :
 VX0616WBL01

Quant Time: Jun 17 03:54:13 2020
 Quant Method : Z:\VOASRV\HPCHEM1\MSVOA_X\METHOD\82X061520W.M
 Quant Title : SW846 8260
 QLast Update : Tue Jun 16 02:02:35 2020
 Response via : Initial Calibration

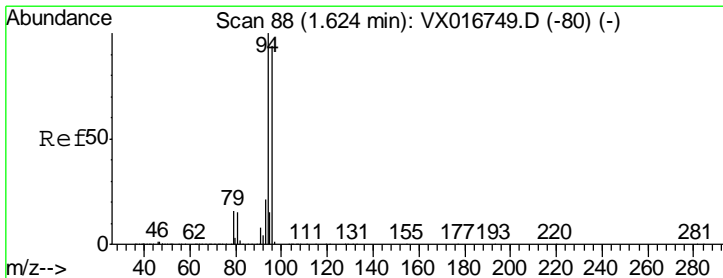
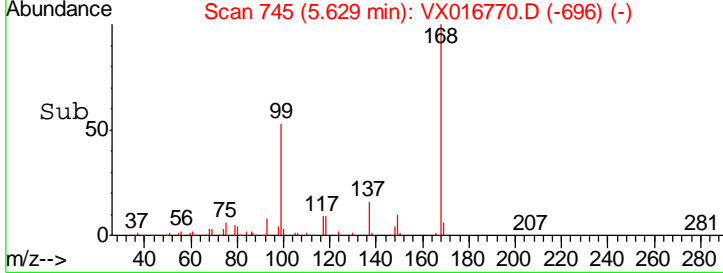
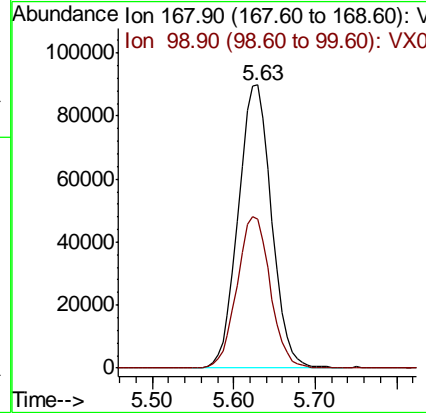
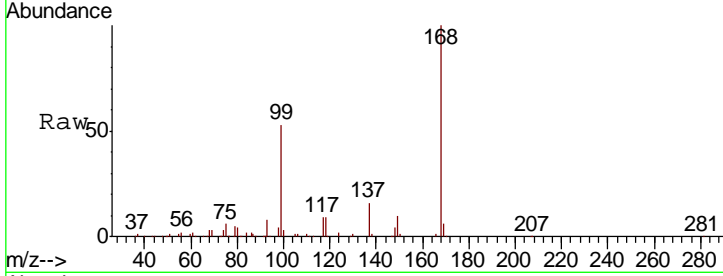




#1
 Pentafluorobenzene
 Concen: 50.000 ug/l
 RT: 5.63 min Scan# 745
 Delta R.T. 0.00 min
 Lab File: VX016770.D
 Acq: 16 Jun 2020 11:37

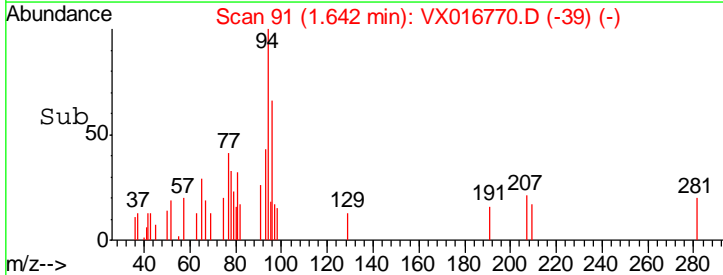
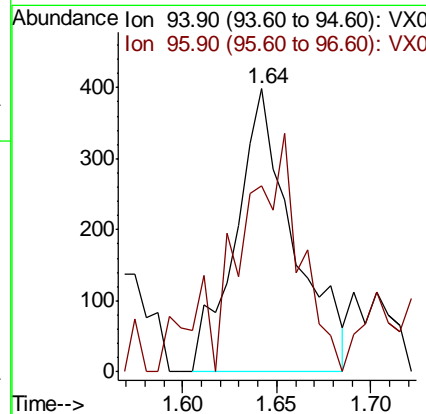
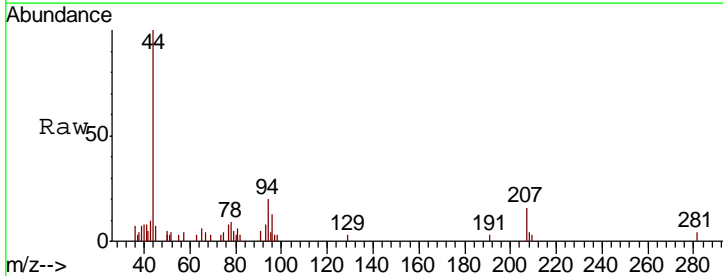
Instrument :
 MSVOA_X
ClientSampled :
 VX0616WBL01

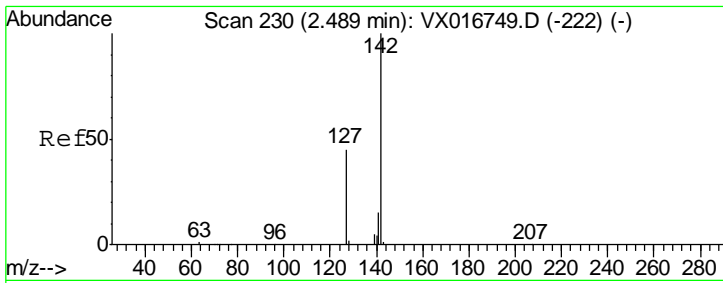
Tgt Ion	Resp	Lower	Upper
168	100		
99	52.8	43.8	65.6



#5
 Bromomethane
 Concen: 0.463 ug/l
 RT: 1.64 min Scan# 91
 Delta R.T. 0.02 min
 Lab File: VX016770.D
 Acq: 16 Jun 2020 11:37

Tgt Ion	Resp	Lower	Upper
94	100		
96	65.8	75.4	113.0#

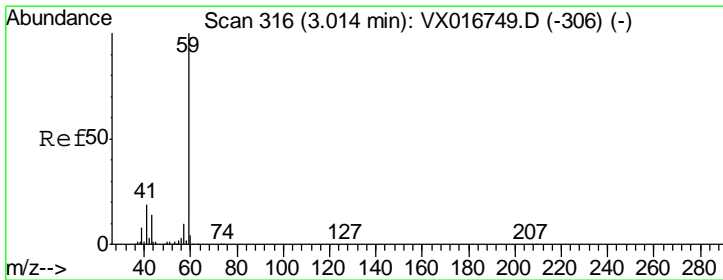
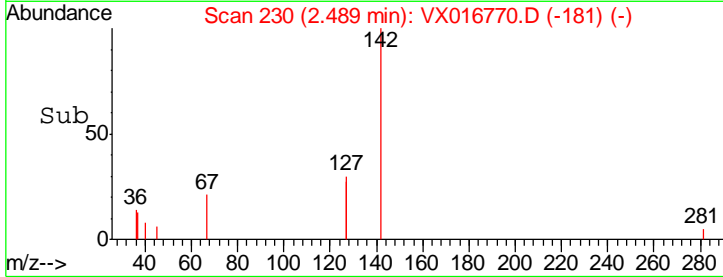
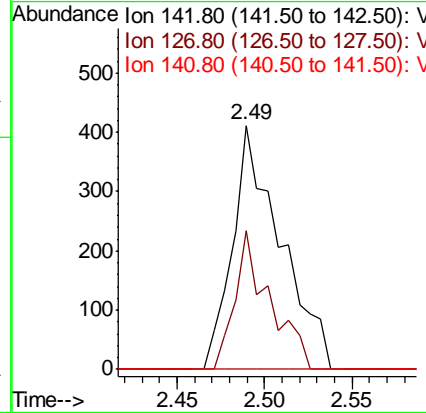
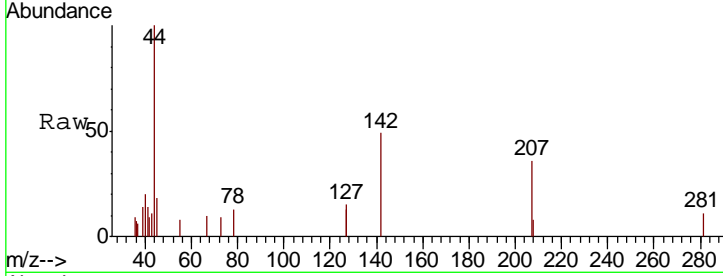




#10
Methyl Iodide
Concen: 0.291 ug/l
RT: 2.49 min Scan# 230
Delta R.T. 0.00 min
Lab File: VX016770.D
Acq: 16 Jun 2020 11:37

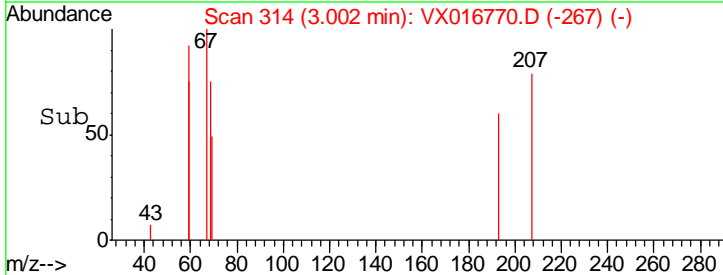
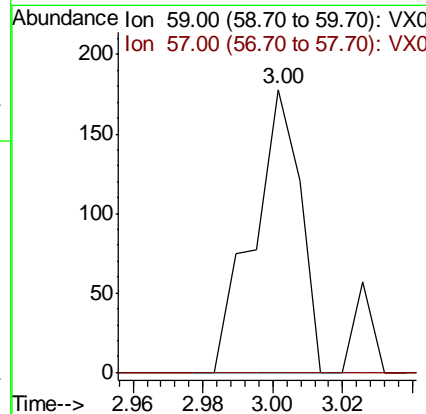
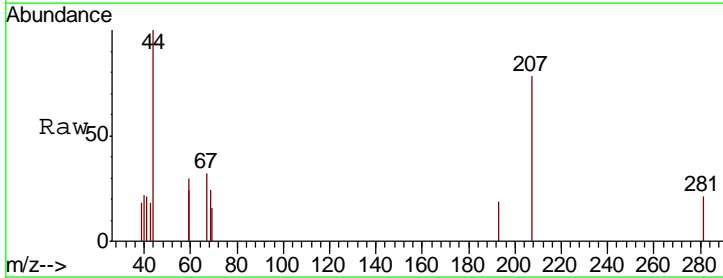
Instrument :
MSVOA_X
ClientSampled :
VX0616WBL01

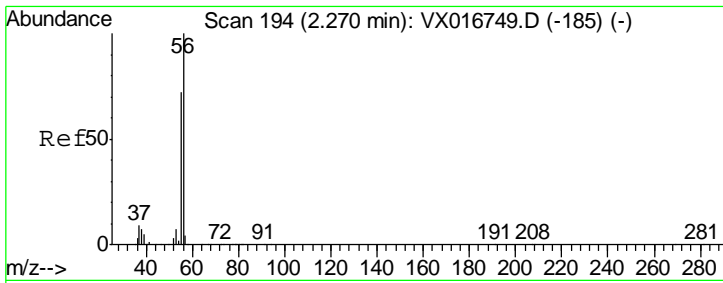
Tgt Ion	Resp	Lower	Upper
142	788		
127	41.1	35.4	53.2
141	0.0	11.7	17.5#



#11
Tert butyl alcohol
Concen: 0.230 ug/l
RT: 3.00 min Scan# 314
Delta R.T. -0.01 min
Lab File: VX016770.D
Acq: 16 Jun 2020 11:37

Tgt Ion	Resp	Lower	Upper
59	165		
57	0.0	8.2	12.2#

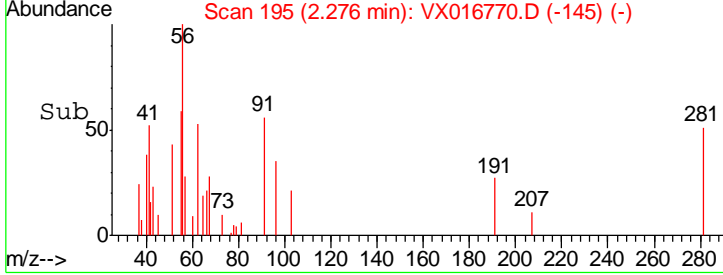
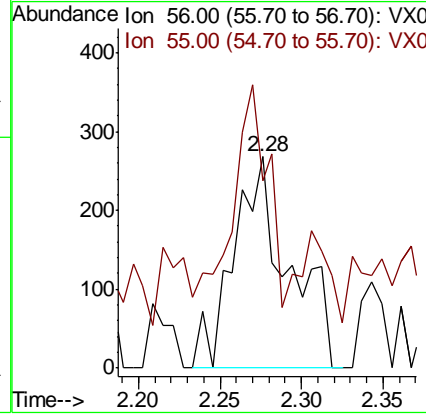
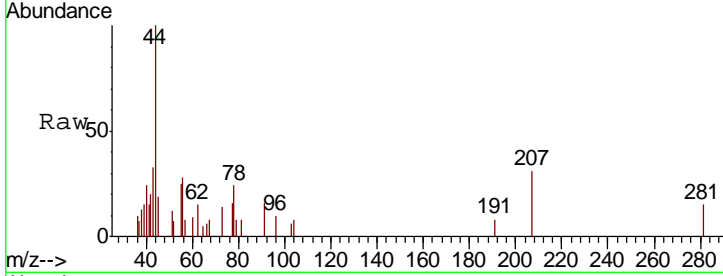




#13
 Acrolein
 Concen: 4.359 ug/l
 RT: 2.28 min Scan# 195
 Delta R.T. 0.01 min
 Lab File: VX016770.D
 Acq: 16 Jun 2020 11:37

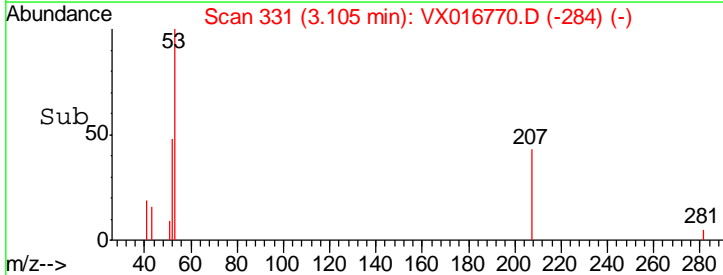
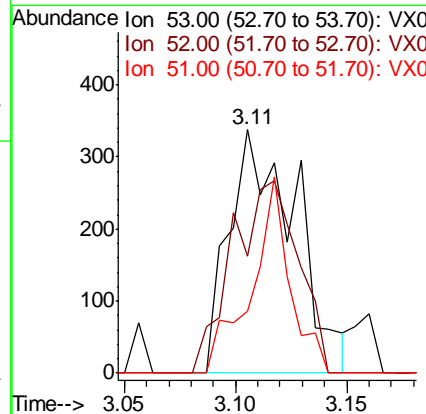
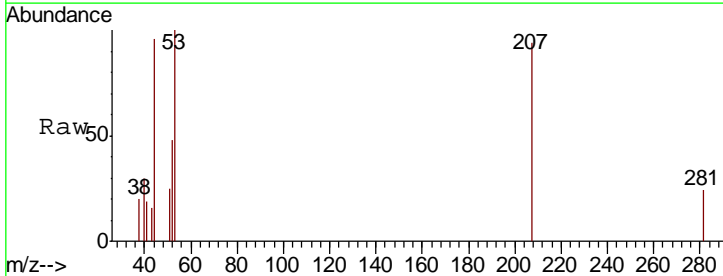
Instrument : MSVOA_X
 ClientSampled : VX0616WBL01

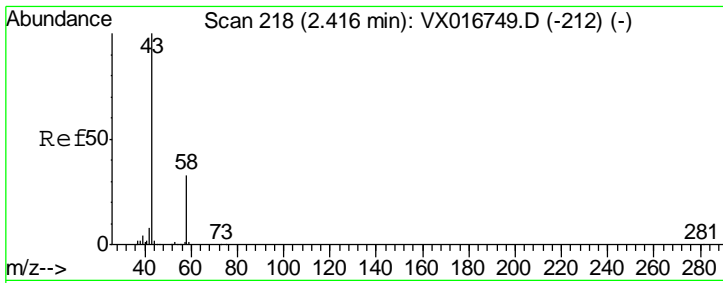
Tgt Ion	Resp	Lower	Upper
56	634		
55	59.9	58.2	87.4



#15
 Acrylonitrile
 Concen: 0.479 ug/l
 RT: 3.11 min Scan# 331
 Delta R.T. -0.01 min
 Lab File: VX016770.D
 Acq: 16 Jun 2020 11:37

Tgt Ion	Resp	Lower	Upper
53	699		
52	78.5	65.5	98.3
51	46.6	28.6	42.8#

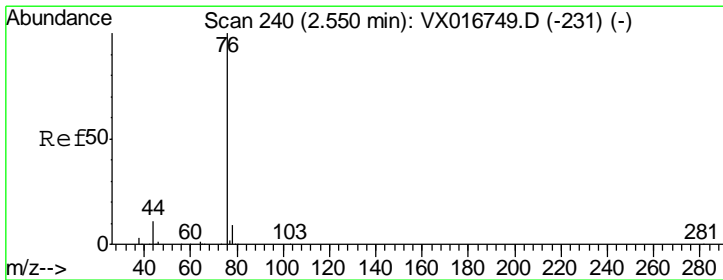
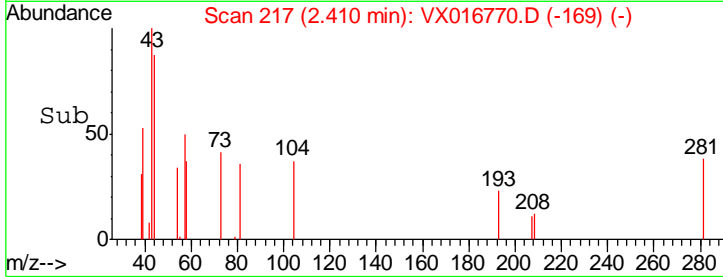
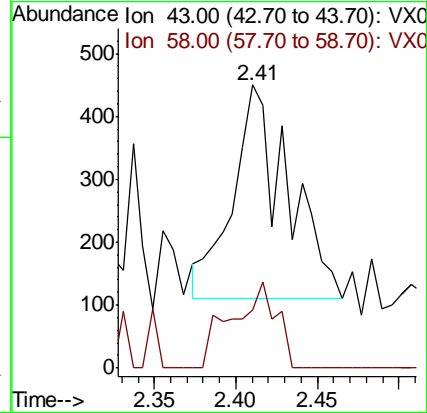
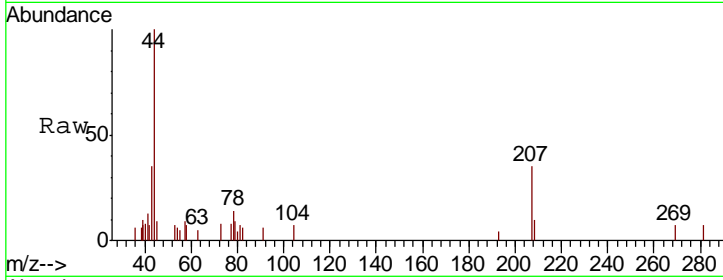




#16
 Acetone
 Concen: 0.614 ug/l
 RT: 2.41 min Scan# 217
 Delta R.T. -0.01 min
 Lab File: VX016770.D
 Acq: 16 Jun 2020 11:37

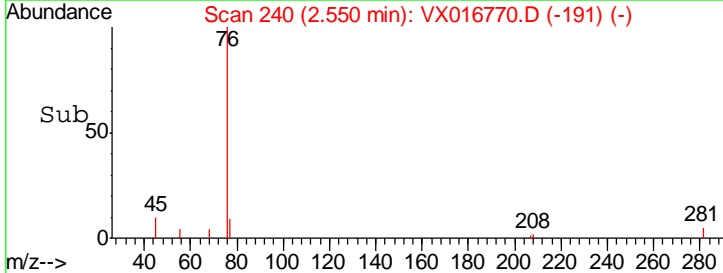
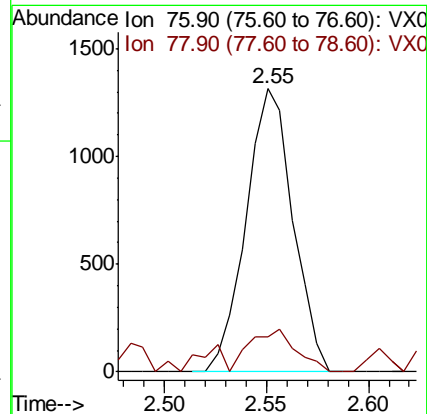
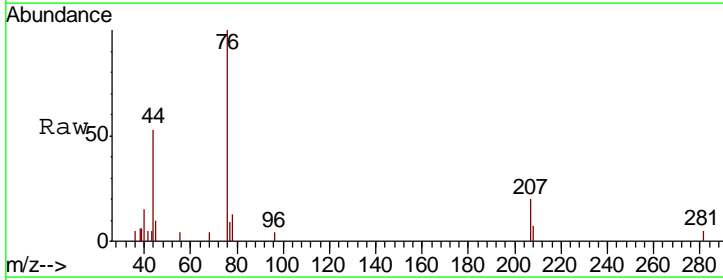
Instrument :
 MSVOA_X
 ClientSampled :
 VX0616WBL01

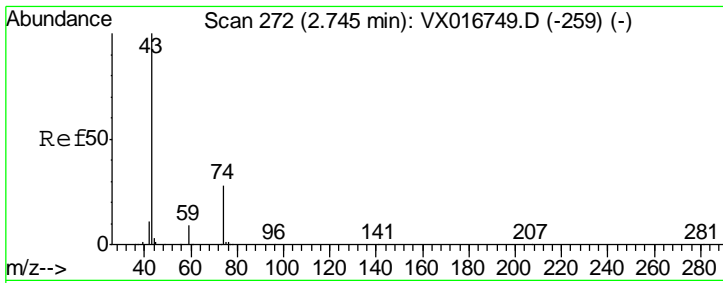
Tgt Ion	Resp	Lower	Upper
43	100		
58	26.8	26.3	39.5



#17
 Carbon Disulfide
 Concen: 0.296 ug/l
 RT: 2.55 min Scan# 240
 Delta R.T. 0.00 min
 Lab File: VX016770.D
 Acq: 16 Jun 2020 11:37

Tgt Ion	Resp	Lower	Upper
76	100		
78	12.6	7.3	10.9#

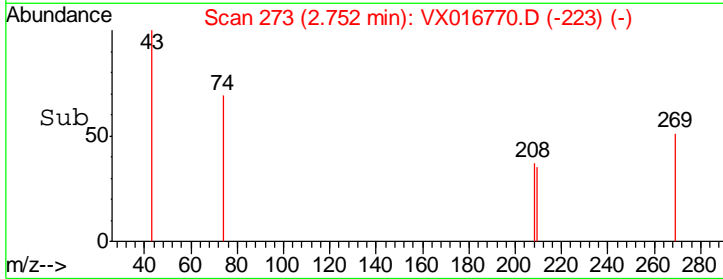
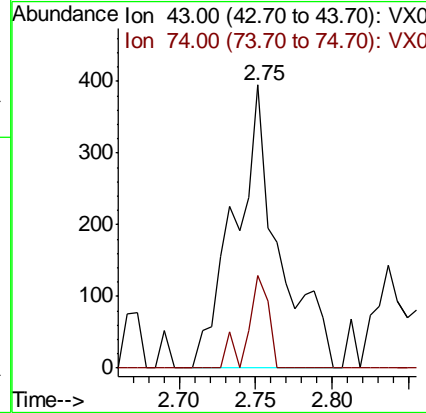
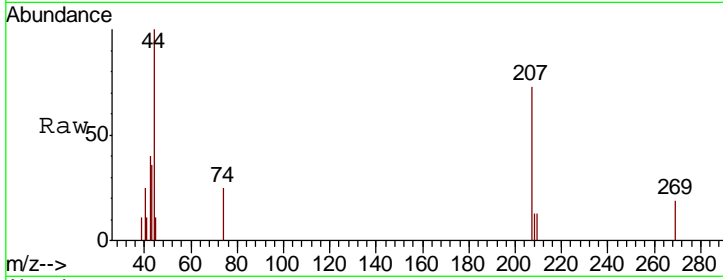




#18
Methyl Acetate
Concen: 0.229 ug/l
RT: 2.75 min Scan# 273
Delta R.T. 0.01 min
Lab File: VX016770.D
Acq: 16 Jun 2020 11:37

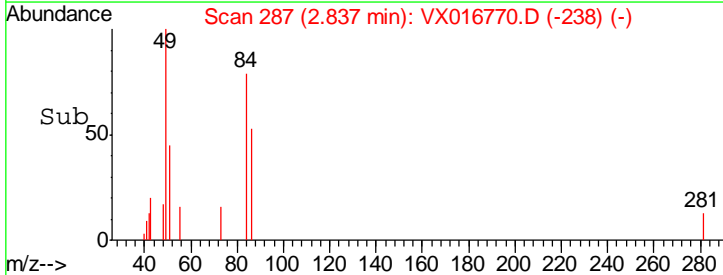
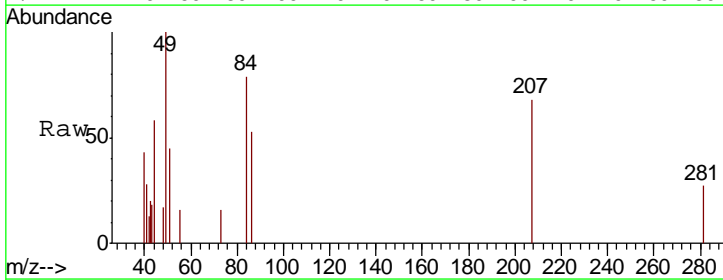
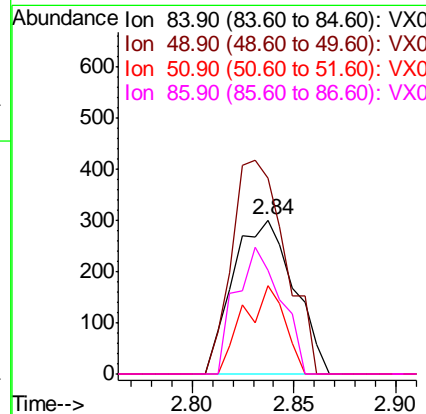
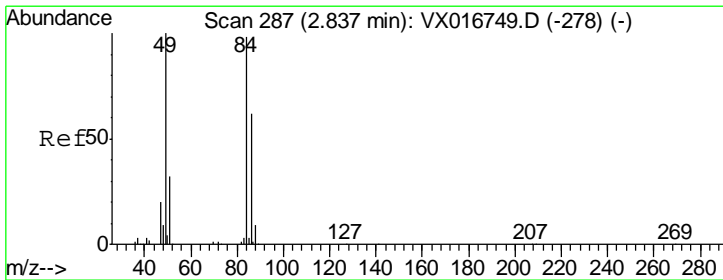
Instrument :
MSVOA_X
ClientSampled :
VX0616WBL01

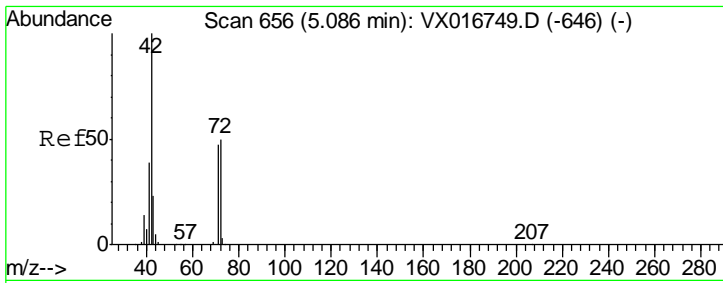
Tgt Ion	Resp	Lower	Upper
43	100		
74	15.0	22.4	33.6#



#20
Methylene Chloride
Concen: 0.223 ug/l
RT: 2.84 min Scan# 287
Delta R.T. 0.00 min
Lab File: VX016770.D
Acq: 16 Jun 2020 11:37

Tgt Ion	Resp	Lower	Upper
84	100		
49	127.3	81.8	122.8#
51	57.0	25.8	38.8#
86	67.0	50.4	75.6

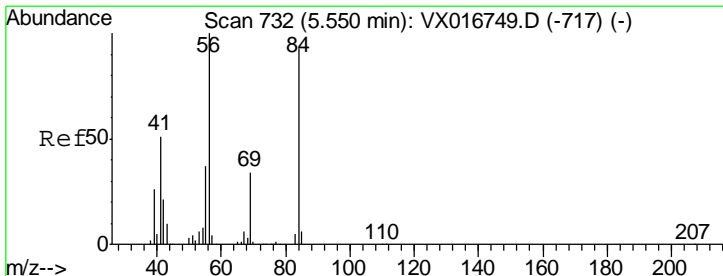
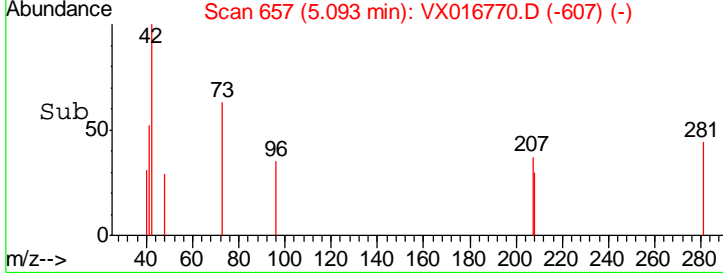
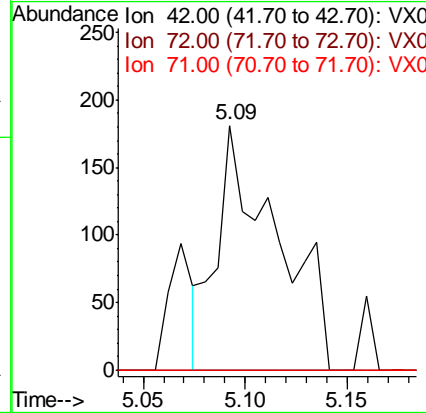
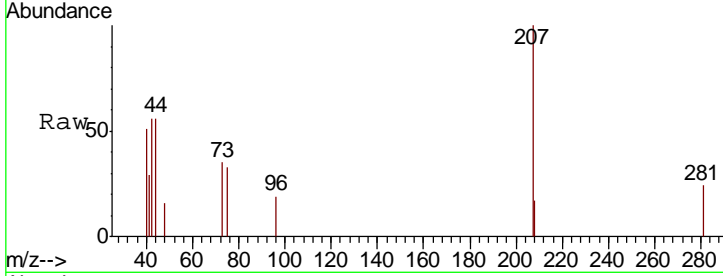




#29
 Tetrahydrofuran
 Concen: 0.292 ug/l
 RT: 5.09 min Scan# 657
 Delta R.T. 0.01 min
 Lab File: VX016770.D
 Acq: 16 Jun 2020 11:37

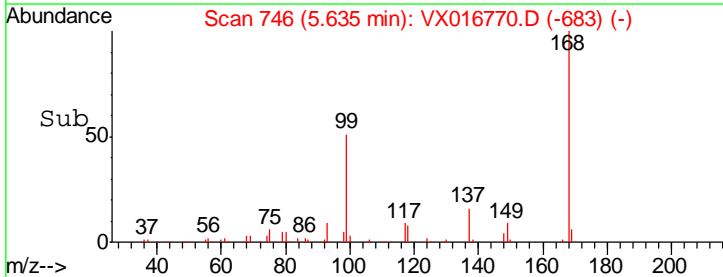
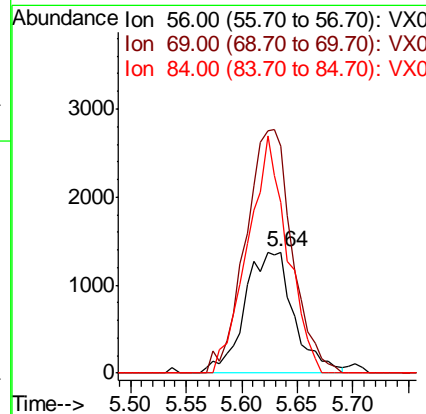
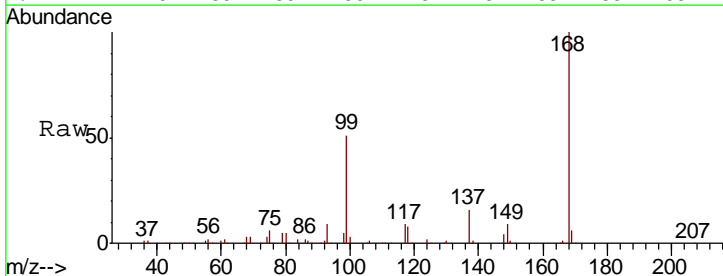
Instrument :
 MSVOA_X
 ClientSampleID :
 VX0616WBL01

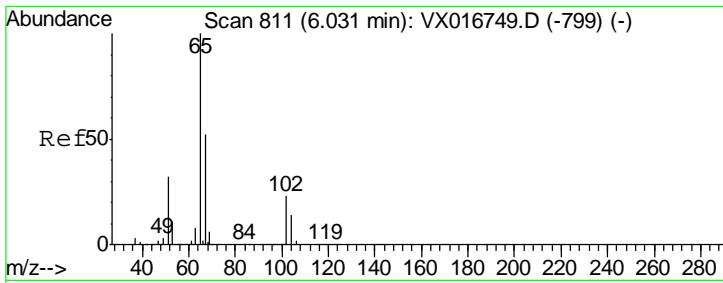
Tgt Ion	Resp	Lower	Upper
42	100		
72	0.0	41.0	61.6#
71	0.0	38.2	57.4#



#31
 Cyclohexane
 Concen: 1.831 ug/l
 RT: 5.64 min Scan# 746
 Delta R.T. 0.09 min
 Lab File: VX016770.D
 Acq: 16 Jun 2020 11:37

Tgt Ion	Resp	Lower	Upper
56	100		
69	187.3	27.1	40.7#
84	140.9	74.0	111.0#

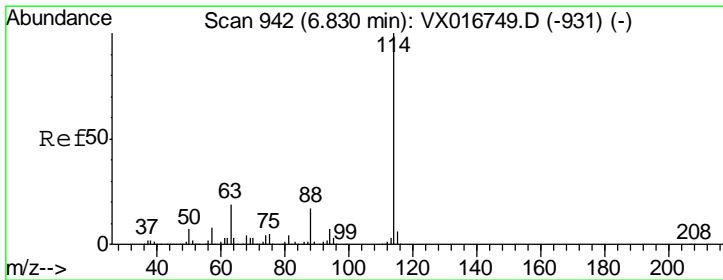
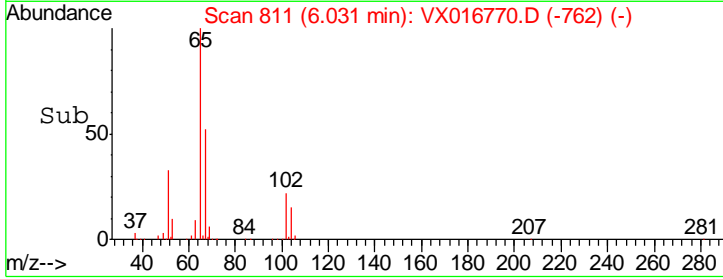
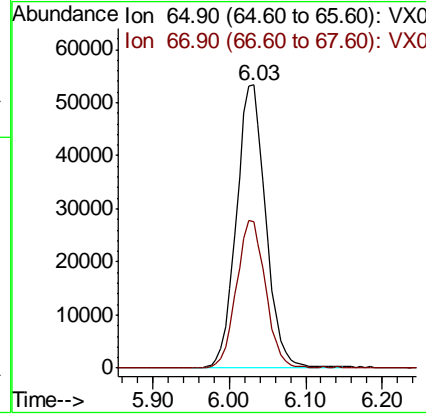
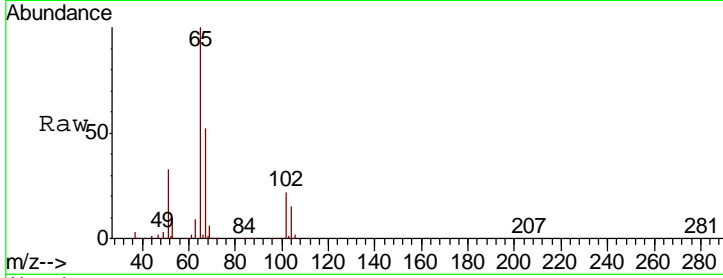




#33
 1,2-Dichloroethane-d4
 Concen: 49.588 ug/l
 RT: 6.03 min Scan# 811
 Delta R.T. 0.00 min
 Lab File: VX016770.D
 Acq: 16 Jun 2020 11:37

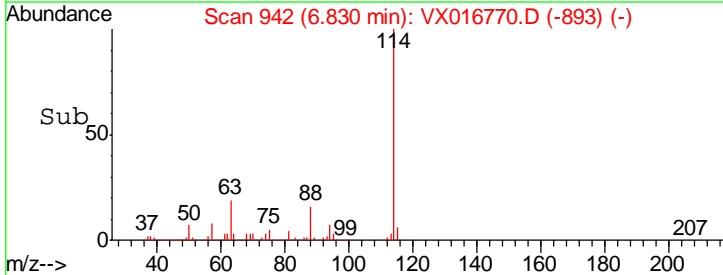
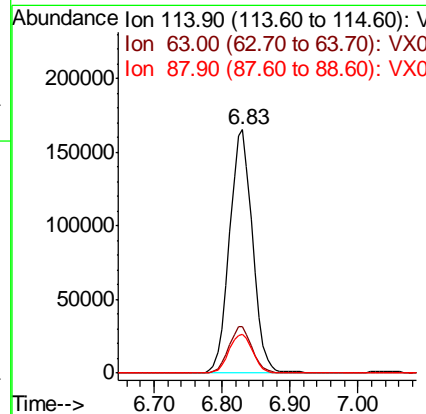
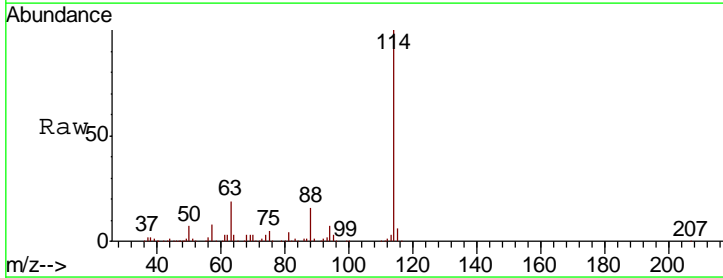
Instrument :
 MSVOA_X
 ClientSampled :
 VX0616WBL01

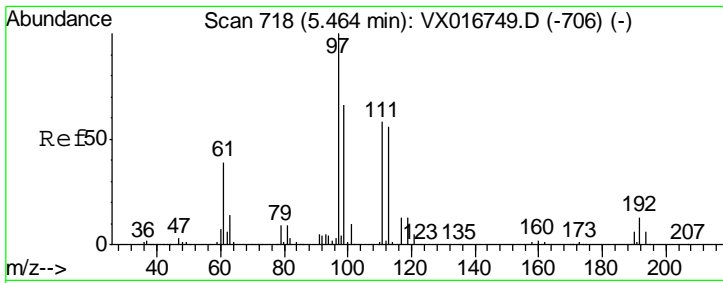
Tgt Ion	Resp	Lower	Upper
65	141807		
67	51.5	0.0	103.0



#34
 1,4-Difluorobenzene
 Concen: 50.000 ug/l
 RT: 6.83 min Scan# 942
 Delta R.T. 0.00 min
 Lab File: VX016770.D
 Acq: 16 Jun 2020 11:37

Tgt Ion	Resp	Lower	Upper
114	388437		
63	19.3	0.0	38.8
88	15.9	0.0	33.4

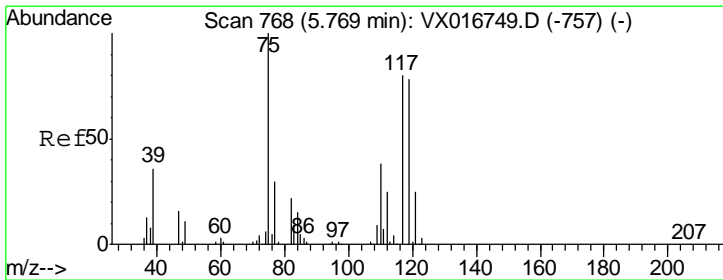
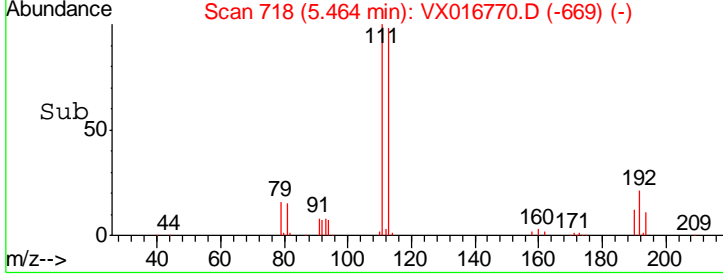
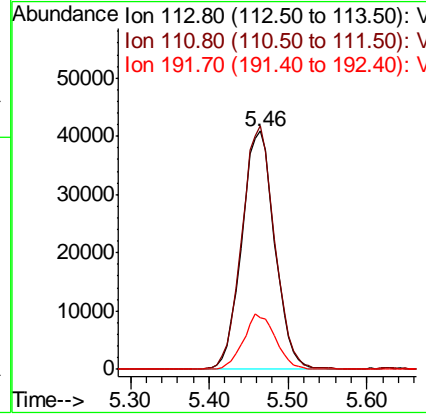
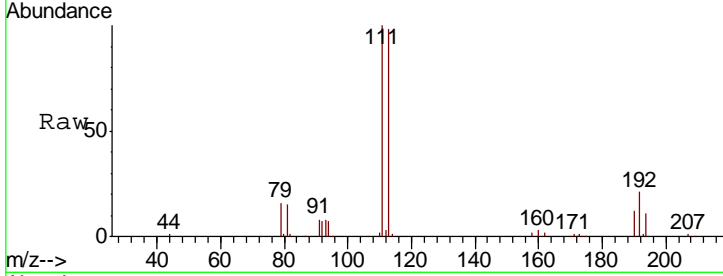




#35
 Dibromofluoromethane
 Concen: 49.461 ug/l
 RT: 5.46 min Scan# 718
 Delta R.T. 0.00 min
 Lab File: VX016770.D
 Acq: 16 Jun 2020 11:37

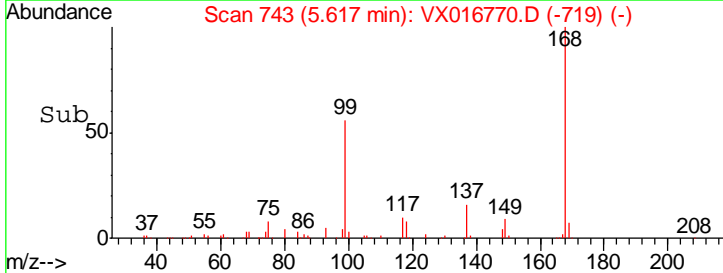
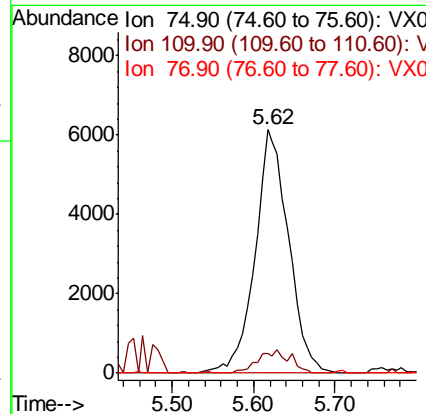
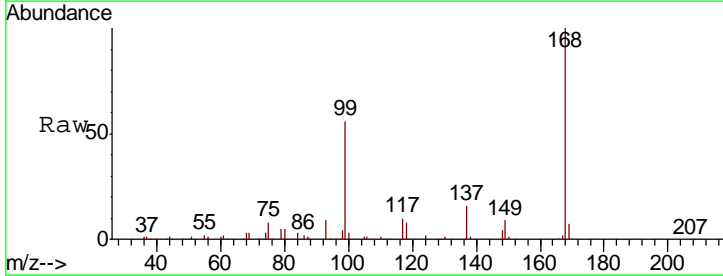
Instrument :
 MSVOA_X
 ClientSampled :
 VX0616WBL01

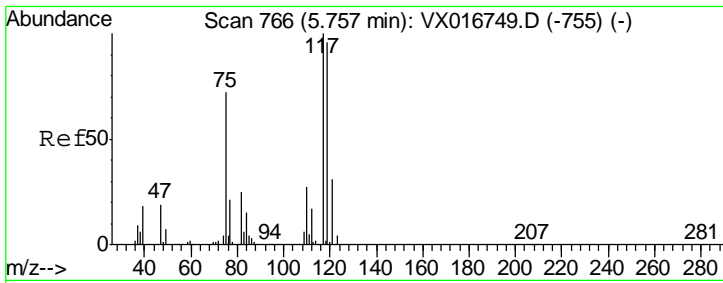
Tgt Ion	Resp	Lower	Upper
113	118537		
111	102.0	81.8	122.6
192	22.7	18.2	27.4



#36
 1,1-Dichloropropene
 Concen: 5.111 ug/l
 RT: 5.62 min Scan# 743
 Delta R.T. -0.15 min
 Lab File: VX016770.D
 Acq: 16 Jun 2020 11:37

Tgt Ion	Resp	Lower	Upper
75	17543		
110	9.1	18.4	55.2#
77	0.0	24.7	37.1#

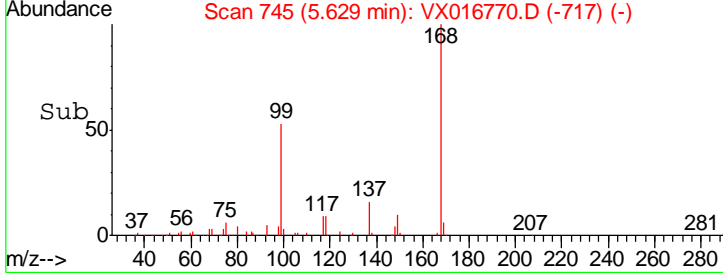
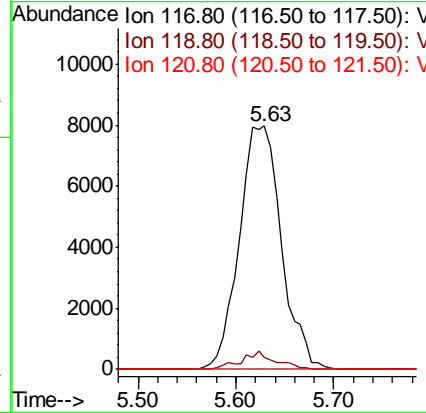
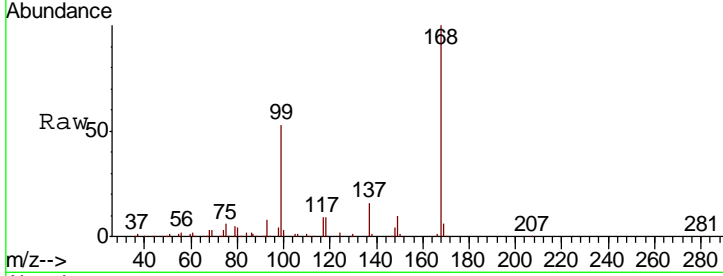




#38
 Carbon Tetrachloride
 Concen: 6.113 ug/l
 RT: 5.63 min Scan# 745
 Delta R.T. -0.13 min
 Lab File: VX016770.D
 Acq: 16 Jun 2020 11:37

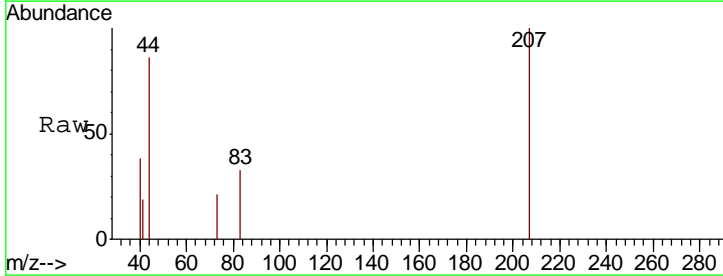
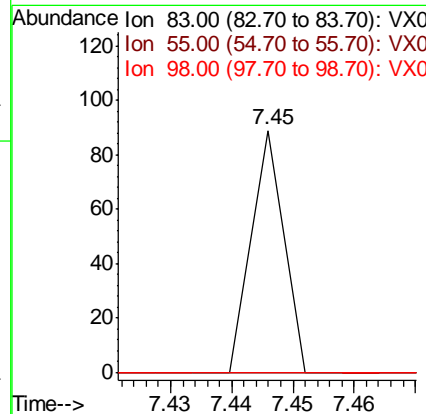
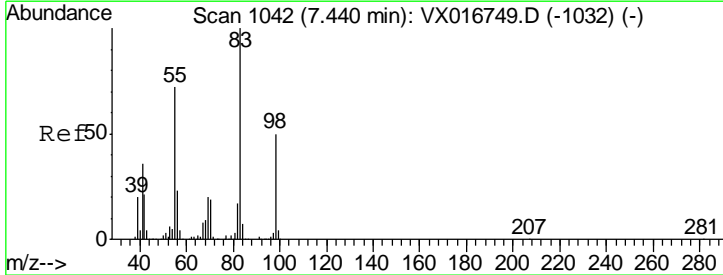
Instrument :
 MSVOA_X
 ClientSampled :
 VX0616WBL01

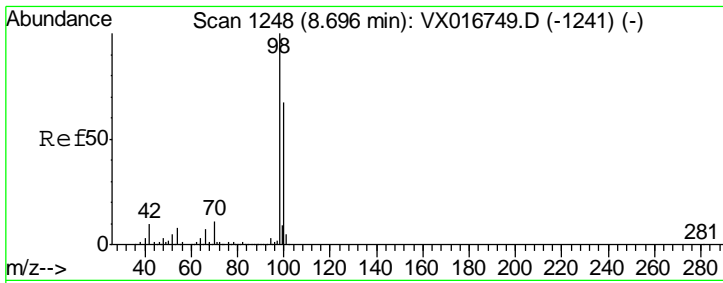
Tgt Ion	Resp	Lower	Upper
117	100		
119	4.7	76.7	115.1#
121	0.0	24.7	37.1#



#39
 Methylcyclohexane
 Concen: 0.961 ug/l
 RT: 7.45 min Scan# 1043
 Delta R.T. 0.01 min
 Lab File: VX016770.D
 Acq: 16 Jun 2020 11:37

Tgt Ion	Resp	Lower	Upper
83	100		
55	0.0	57.3	85.9#
98	0.0	40.3	60.5#

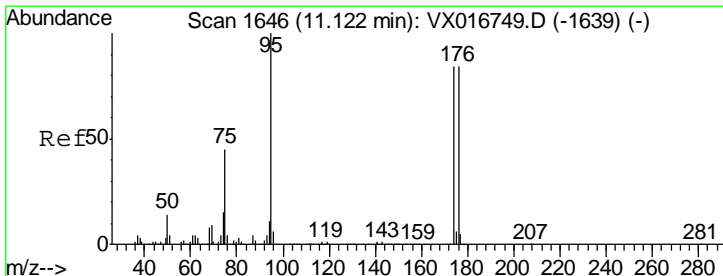
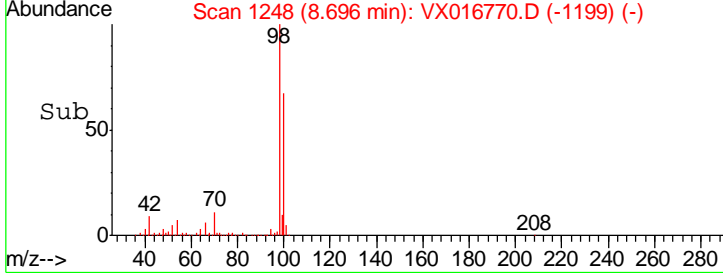
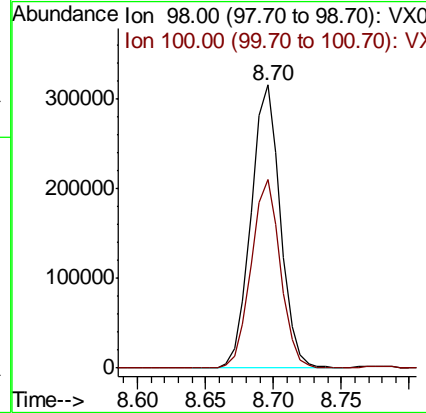
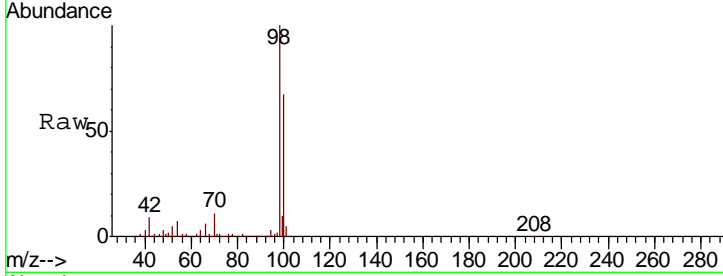




#50
 Toluene-d8
 Concen: 54.129 ug/l
 RT: 8.70 min Scan# 1248
 Delta R.T. 0.00 min
 Lab File: VX016770.D
 Acq: 16 Jun 2020 11:37

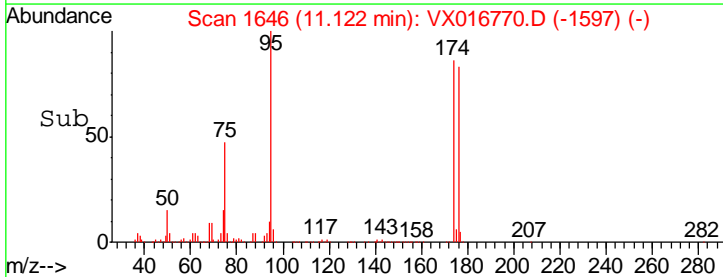
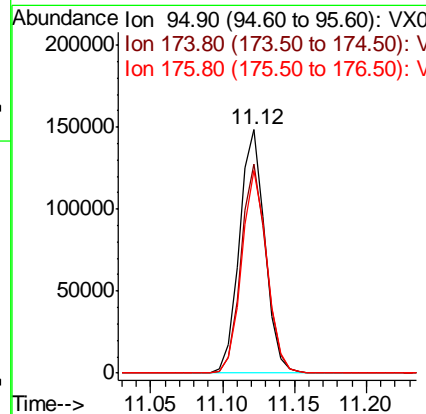
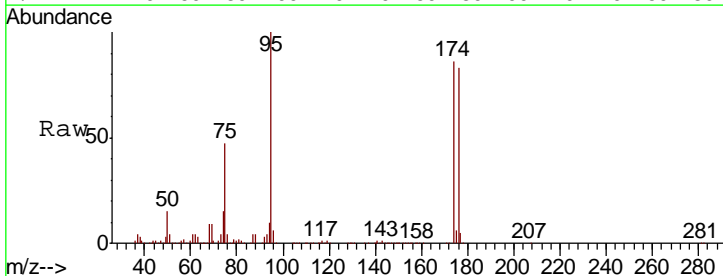
Instrument : MSVOA_X
 ClientSampled : VX0616WBL01

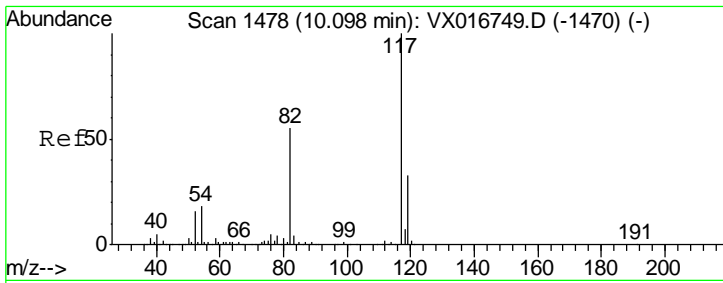
Tgt Ion	Resp	Lower	Upper
98	478332		
100	66.5	53.9	80.9



#62
 4-Bromofluorobenzene
 Concen: 54.307 ug/l
 RT: 11.12 min Scan# 1646
 Delta R.T. 0.00 min
 Lab File: VX016770.D
 Acq: 16 Jun 2020 11:37

Tgt Ion	Resp	Lower	Upper
95	183562		
174	85.3	0.0	171.0
176	82.7	0.0	166.2

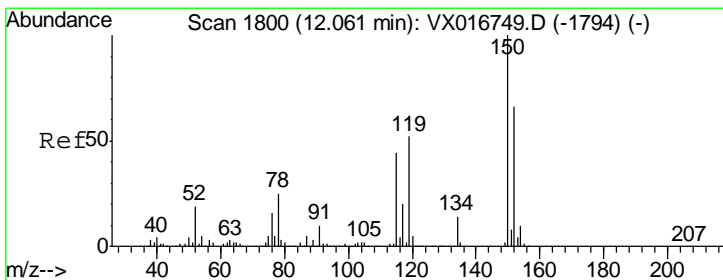
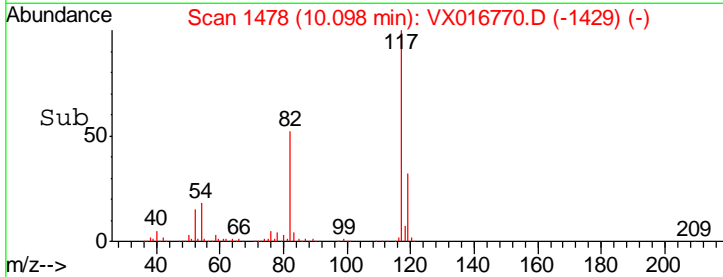
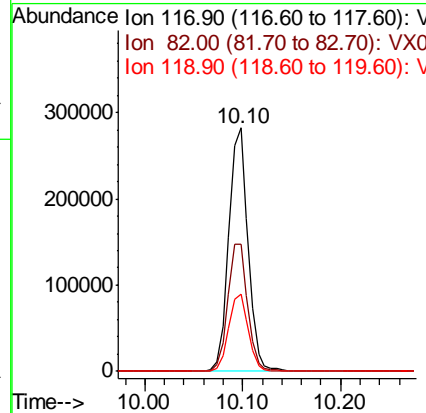
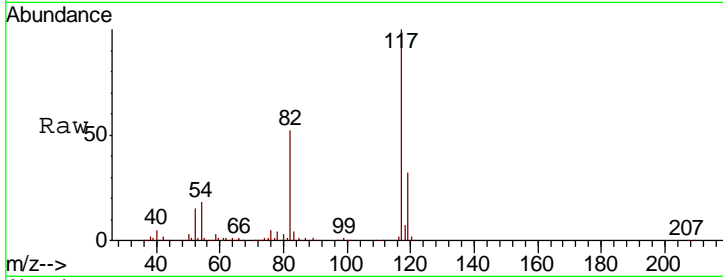




#63
 Chlorobenzene-d5
 Concen: 50.000 ug/l
 RT: 10.10 min Scan# 1478
 Delta R.T. 0.00 min
 Lab File: VX016770.D
 Acq: 16 Jun 2020 11:37

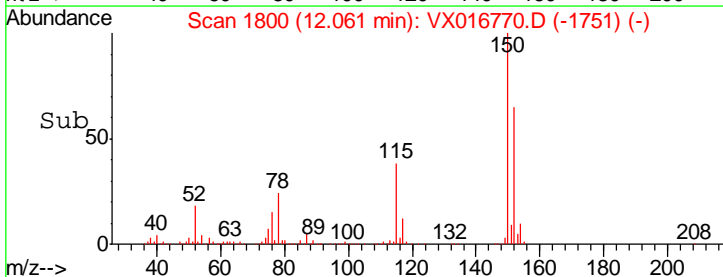
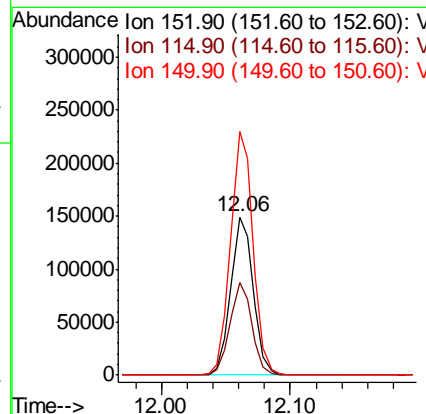
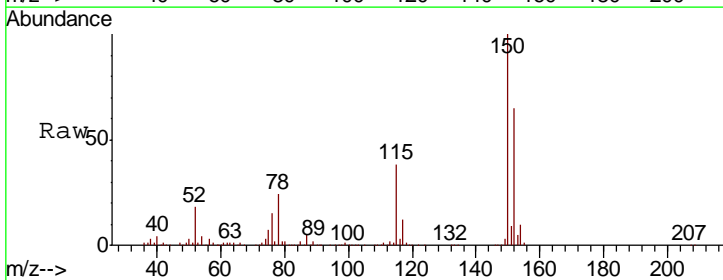
Instrument :
 MSVOA_X
 ClientSampled :
 VX0616WBL01

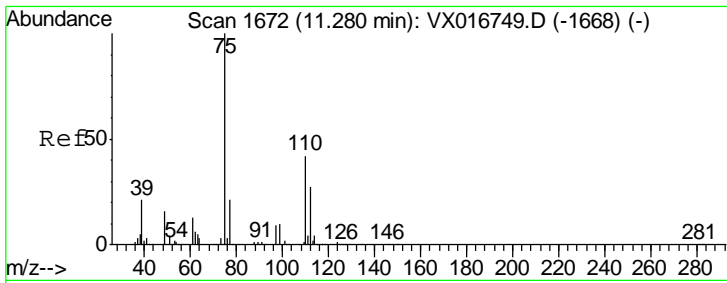
Tgt Ion	Resp	Lower	Upper
117	385338		
82	52.3	43.8	65.6
119	31.8	26.2	39.4



#72
 1,4-Dichlorobenzene-d4
 Concen: 50.000 ug/l
 RT: 12.06 min Scan# 1800
 Delta R.T. 0.00 min
 Lab File: VX016770.D
 Acq: 16 Jun 2020 11:37

Tgt Ion	Resp	Lower	Upper
152	183269		
115	57.4	40.3	120.8
150	154.6	0.0	337.4

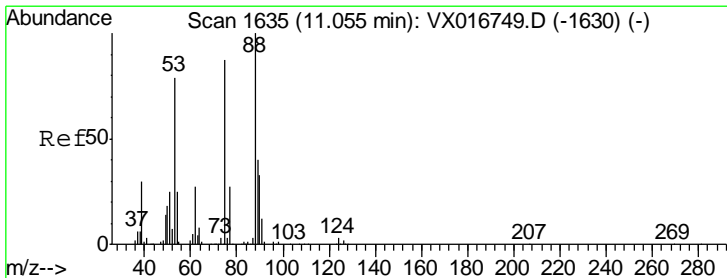
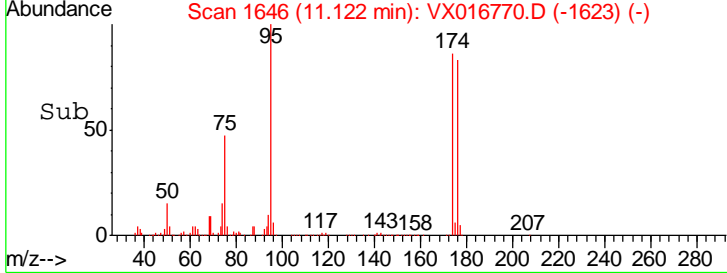
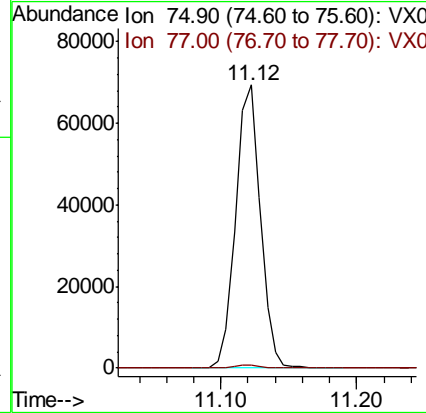
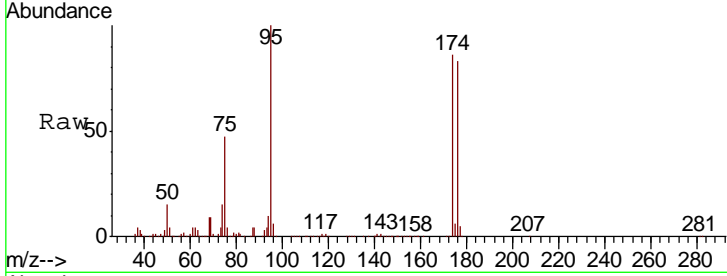




#76
 1,2,3-Trichloropropane
 Concen: 22.750 ug/l
 RT: 11.12 min Scan# 1646
 Delta R.T. -0.16 min
 Lab File: VX016770.D
 Acq: 16 Jun 2020 11:37

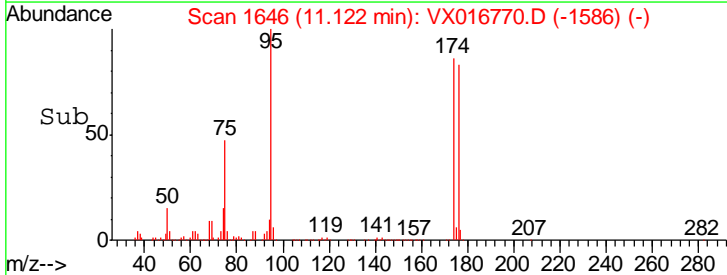
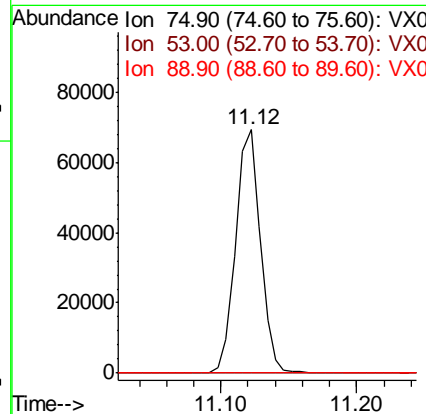
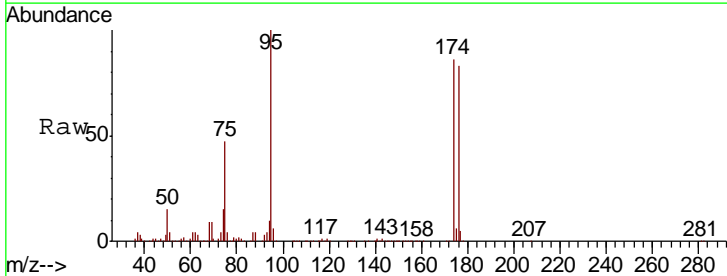
Instrument :
 MSVOA_X
 ClientSampled :
 VX0616WBL01

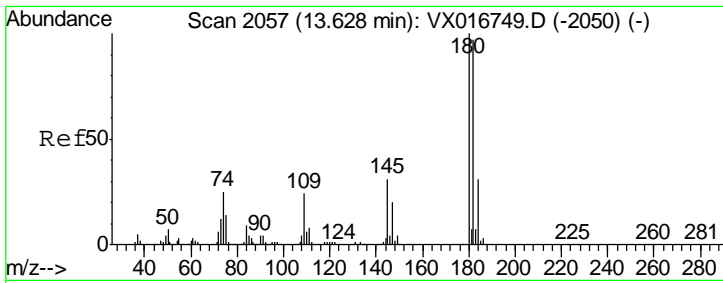
Tgt Ion: 75 Resp: 87678
 Ion Ratio Lower Upper
 75 100
 77 1.2 20.3 60.9#



#81
 trans-1,4-Dichloro-2-butene
 Concen: 57.271 ug/l
 RT: 11.12 min Scan# 1646
 Delta R.T. 0.07 min
 Lab File: VX016770.D
 Acq: 16 Jun 2020 11:37

Tgt Ion: 75 Resp: 87678
 Ion Ratio Lower Upper
 75 100
 53 0.2 71.4 107.0#
 89 0.0 39.1 58.7#

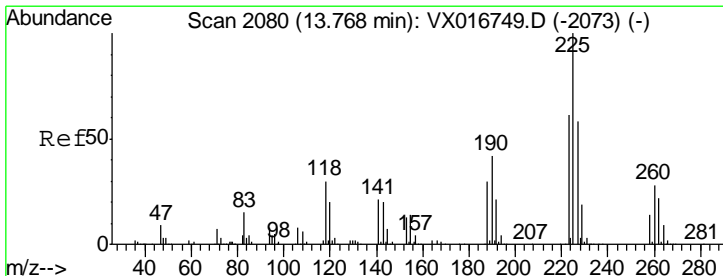
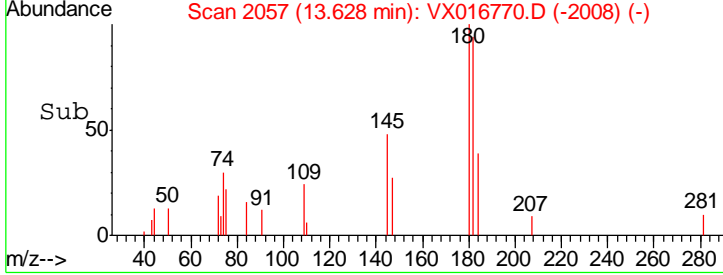
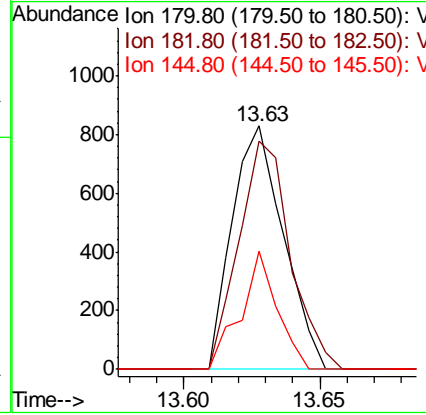
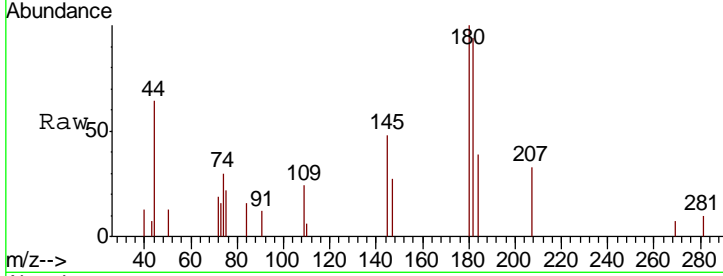




#93
 1,2,4-Trichlorobenzene
 Concen: 0.269 ug/l
 RT: 13.63 min Scan# 2057
 Delta R.T. 0.00 min
 Lab File: VX016770.D
 Acq: 16 Jun 2020 11:37

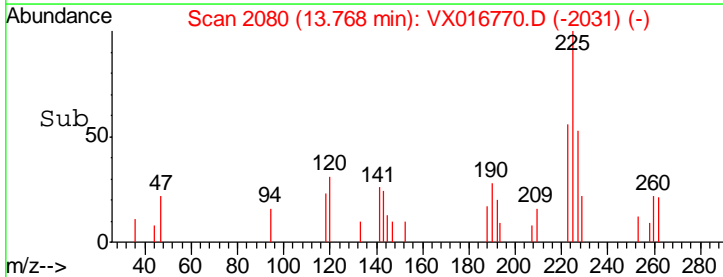
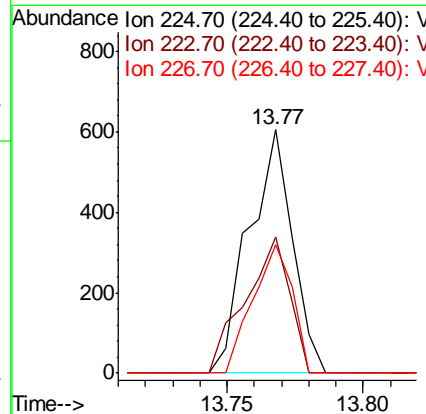
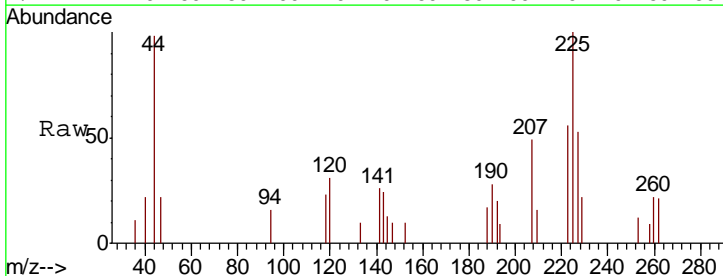
Instrument :
 MSVOA_X
 ClientSampled :
 VX0616WBL01

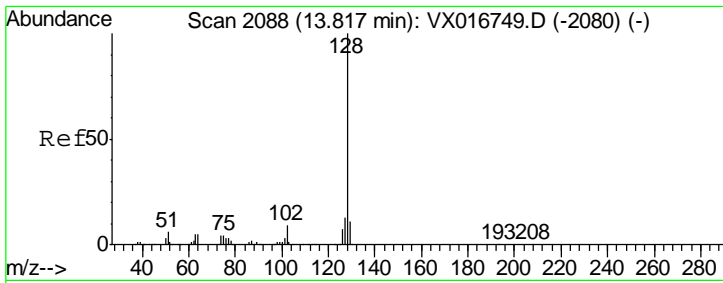
Tgt Ion	Resp	Lower	Upper
180	1083		
182	94.2	48.6	145.8
145	34.3	15.4	46.4



#94
 Hexachlorobutadiene
 Concen: 0.790 ug/l
 RT: 13.77 min Scan# 2080
 Delta R.T. 0.00 min
 Lab File: VX016770.D
 Acq: 16 Jun 2020 11:37

Tgt Ion	Resp	Lower	Upper
225	671		
223	56.8	31.1	93.5
227	47.8	30.9	92.7

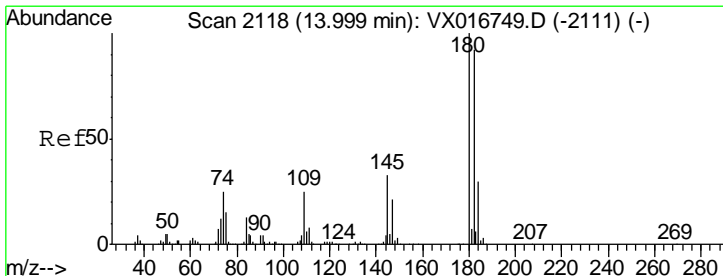
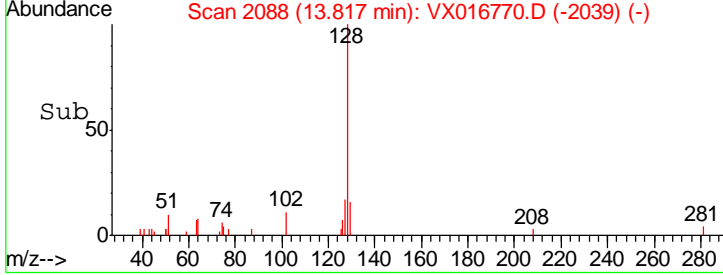
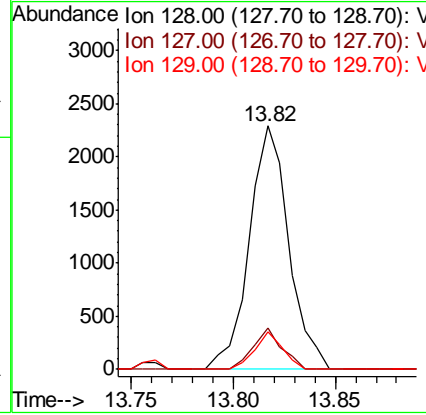
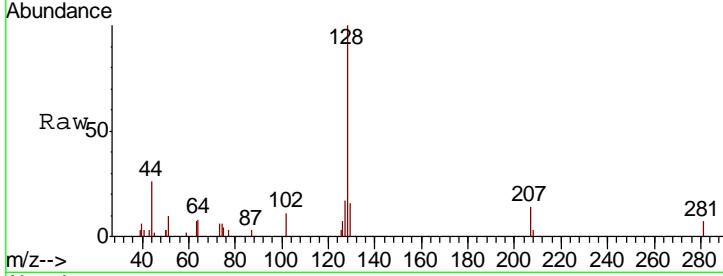




#95
 Naphthalene
 Concen: 0.245 ug/l
 RT: 13.82 min Scan# 2088
 Delta R.T. 0.00 min
 Lab File: VX016770.D
 Acq: 16 Jun 2020 11:37

Instrument : MSVOA_X
 ClientSampled : VX0616WBL01

Tgt Ion	Resp	Lower	Upper
128	100		
127	12.3	10.2	15.4
129	10.9	8.8	13.2



#96
 1,2,3-Trichlorobenzene
 Concen: 0.292 ug/l
 RT: 14.00 min Scan# 2118
 Delta R.T. 0.00 min
 Lab File: VX016770.D
 Acq: 16 Jun 2020 11:37

Tgt Ion	Resp	Lower	Upper
180	100		
182	108.6	47.1	141.4
145	32.2	15.9	47.7

