

Data Path : Z:\VOASRV\HPCHEM1\MSVOA X\DATA\VX061620\
 Data File : VX016789.D
 Acq On : 16 Jun 2020 18:53
 Operator : JC/SP
 Sample : L2986-09 20X
 Misc : 5.0mL/MSVOA X/WATER
 ALS Vial : 22 Sample Multiplier: 1

Instrument :
 MSVOA_X
 ClientSampleId :
 93-94-COMP

Quant Time: Jun 17 03:58:44 2020
 Quant Method : Z:\VOASRV\HPCHEM1\MSVOA_X\METHOD\82X061520W.M
 Quant Title : SW846 8260
 QLast Update : Tue Jun 16 02:02:35 2020
 Response via : Initial Calibration

Internal Standards	R.T.	QIon	Response	Conc	Units	Dev(Min)
1) Pentafluorobenzene	5.63	168	240414	50.00	ug/l	0.00
34) 1,4-Difluorobenzene	6.83	114	377659	50.00	ug/l	0.00
63) Chlorobenzene-d5	10.10	117	384999	50.00	ug/l	0.00
72) 1,4-Dichlorobenzene-d4	12.06	152	204921	50.00	ug/l	0.00

System Monitoring Compounds

33) 1,2-Dichloroethane-d4	6.03	65	136911	50.63	ug/l	0.00
Spiked Amount	50.000		Recovery	=	101.26%	
35) Dibromofluoromethane	5.46	113	118098	50.68	ug/l	0.00
Spiked Amount	50.000		Recovery	=	101.36%	
50) Toluene-d8	8.70	98	464475	54.06	ug/l	0.00
Spiked Amount	50.000		Recovery	=	108.12%	
62) 4-Bromofluorobenzene	11.12	95	194347	59.14	ug/l	0.00
Spiked Amount	50.000		Recovery	=	118.28%	

Target Compounds

						Qvalue
11) Tert butyl alcohol	3.02	59	777	1.144	ug/l	100
13) Acrolein	2.28	56	142	2.792	ug/l #	78
16) Acetone	2.42	43	7078	5.770	ug/l	96
17) Carbon Disulfide	2.55	76	1689	0.251	ug/l #	90
18) Methyl Acetate	2.74	43	761	0.232	ug/l #	52
20) Methylene Chloride	2.83	84	1556	0.589	ug/l	97
21) trans-1,2-Dichloroethene	3.14	96	601	0.238	ug/l #	42
25) 2-Butanone	4.64	43	6653	3.599	ug/l	93
31) Cyclohexane	5.62	56	4205	1.887	ug/l #	1
36) 1,1-Dichloropropene	5.63	75	16660	4.992	ug/l #	50
37) Ethyl Acetate	4.64	43	6653	1.820	ug/l #	69
38) Carbon Tetrachloride	5.62	117	22192	5.855	ug/l #	17
39) Methylcyclohexane	7.43	83	114	0.982	ug/l #	19
44) Trichloroethene	7.19	130	2344	0.746	ug/l	81
51) 4-Methyl-2-Pentanone	8.62	43	1310	0.371	ug/l	95
52) Toluene	8.76	92	16784	2.543	ug/l	93
59) 2-Hexanone	9.47	43	1030	0.378	ug/l	92
67) Ethyl Benzene	10.24	91	42275	3.201	ug/l	99
68) m/p-Xylenes	10.34	106	132231	26.408	ug/l	99
69) o-Xylene	10.68	106	88210	18.286	ug/l	98
70) Styrene	10.68	104	5067	0.608	ug/l #	1
73) Isopropylbenzene	11.00	105	20064	1.492	ug/l	99
74) N-ethyl acetate	10.90	43	1493	0.286	ug/l #	1
75) 1,1,2,2-Tetrachloroethane	11.26	83	1263	0.319	ug/l #	26
76) 1,2,3-Trichloropropane	11.41	75	4670	1.084	ug/l #	1
78) n-propylbenzene	11.34	91	91125	6.240	ug/l	99
79) 2-Chlorotoluene	11.42	91	68118	7.377	ug/l #	40
80) 1,3,5-Trimethylbenzene	11.49	105	234898	20.840	ug/l	99
81) trans-1,4-Dichloro-2-buten	11.12	75	93165	54.425	ug/l #	13
82) 4-Chlorotoluene	11.49	91	24029	2.223	ug/l #	45
83) tert-Butylbenzene	11.79	119	120902	11.722	ug/l #	64
84) 1,2,4-Trimethylbenzene	11.79	105	982594	86.175	ug/l	99
85) sec-Butylbenzene	11.93	105	30202	2.503	ug/l #	75
86) p-Isopropyltoluene	12.05	119	25059	2.165	ug/l	98

Data Path : Z:\VOASRV\HPCHEM1\MSVOA X\DATA\VX061620\
 Data File : VX016789.D
 Acq On : 16 Jun 2020 18:53
 Operator : JC/SP
 Sample : L2986-09 20X
 Misc : 5.0mL/MSVOA X/WATER
 ALS Vial : 22 Sample Multiplier: 1

Instrument :
 MSVOA_X
 ClientSampleId :
 93-94-COMP

Quant Time: Jun 17 03:58:44 2020
 Quant Method : Z:\VOASRV\HPCHEM1\MSVOA_X\METHOD\82X061520W.M
 Quant Title : SW846 8260
 QLast Update : Tue Jun 16 02:02:35 2020
 Response via : Initial Calibration

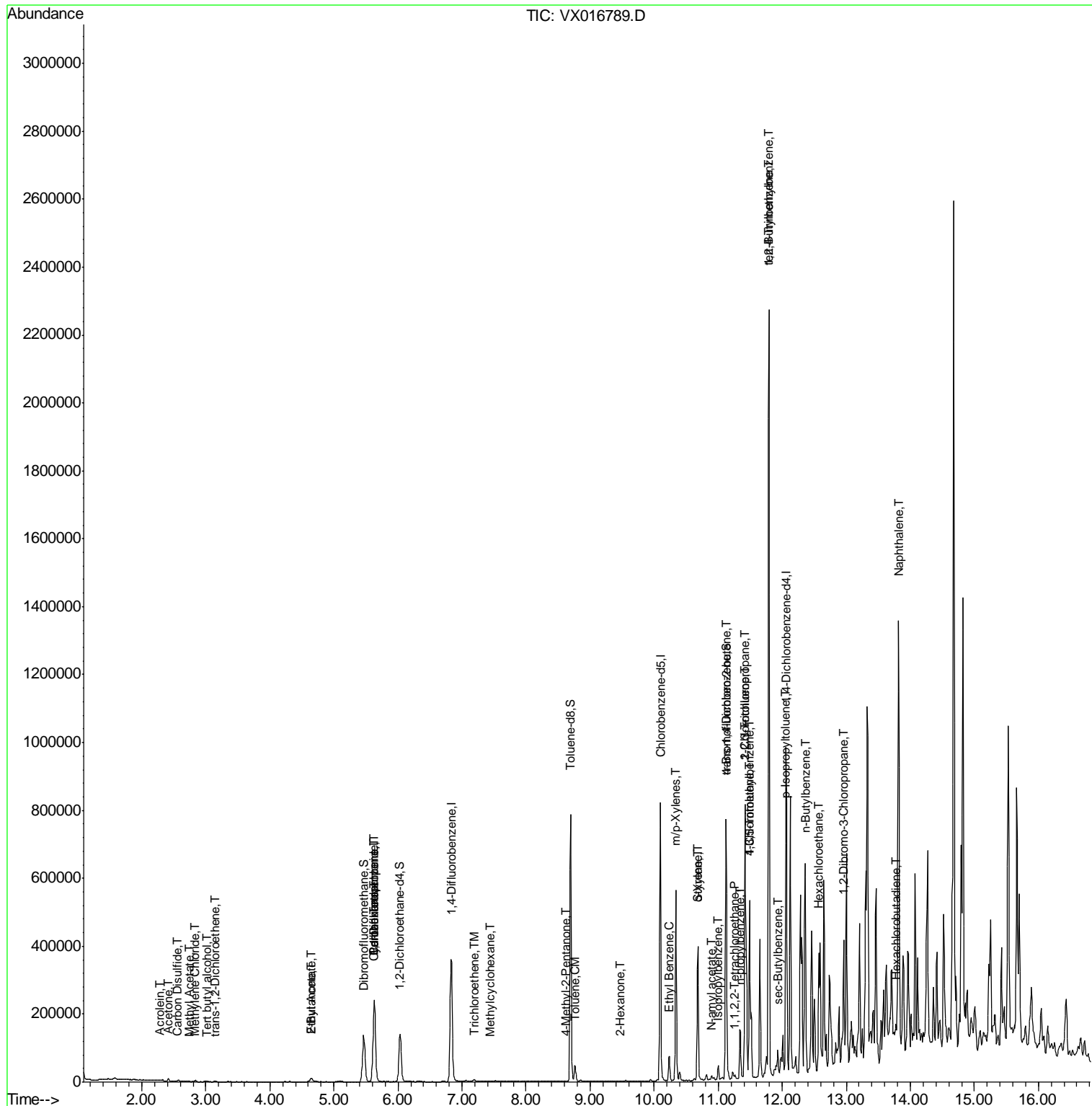
Internal Standards	R.T.	QIon	Response	Conc	Units	Dev(Min)
89) n-Butylbenzene	12.37	91	87757	9.184	ug/l #	24
90) Hexachloroethane	12.57	117	16310	7.641	ug/l #	4
92) 1,2-Dibromo-3-Chloropropan	12.96	75	1374	1.242	ug/l #	1
94) Hexachlorobutadiene	13.77	225	68	0.448	ug/l #	19
95) Naphthalene	13.82	128	776192	55.120	ug/l	99

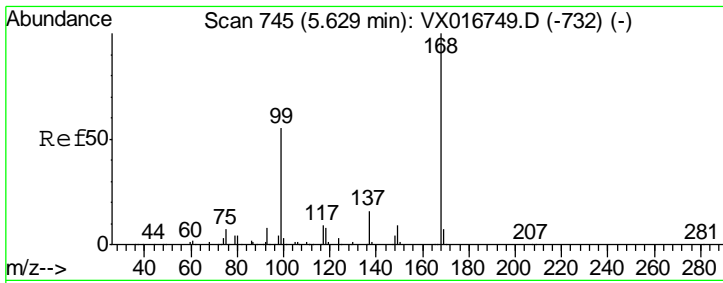
(#) = qualifier out of range (m) = manual integration (+) = signals summed

Data Path : Z:\VOASRV\HPCHEM1\MSVOA X\DATA\VX061620\
 Data File : VX016789.D
 Acq On : 16 Jun 2020 18:53
 Operator : JC/SP
 Sample : L2986-09 20X
 Misc : 5.0mL/MSVOA X/WATER
 ALS Vial : 22 Sample Multiplier: 1

Instrument :
 MSVOA_X
 Client Sampled :
 93-94-COMP

Quant Time: Jun 17 03:58:44 2020
 Quant Method : Z:\VOASRV\HPCHEM1\MSVOA_X\METHOD\82X061520W.M
 Quant Title : SW846 8260
 QLast Update : Tue Jun 16 02:02:35 2020
 Response via : Initial Calibration

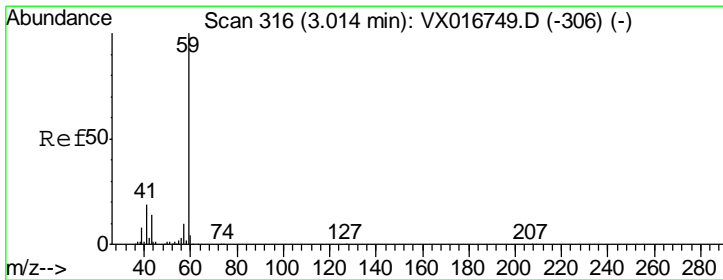
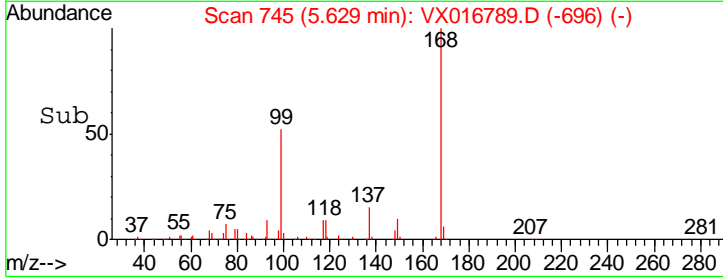
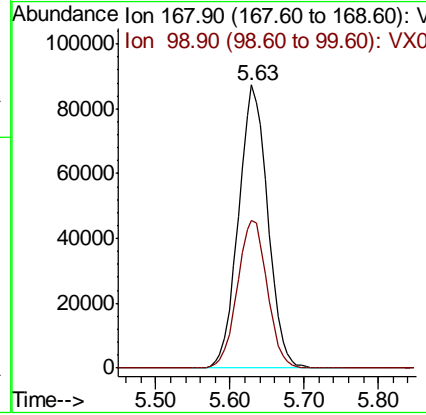
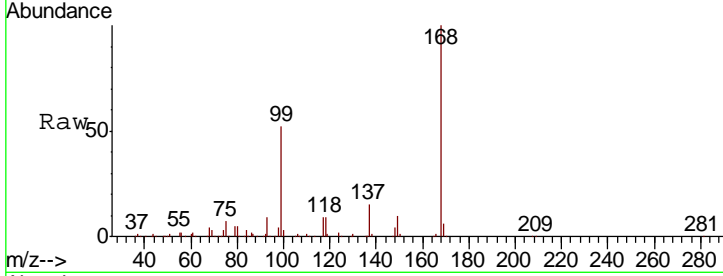




#1
 Pentafluorobenzene
 Concen: 50.000 ug/l
 RT: 5.63 min Scan# 745
 Delta R.T. 0.00 min
 Lab File: VX016789.D
 Acq: 16 Jun 2020 18:53

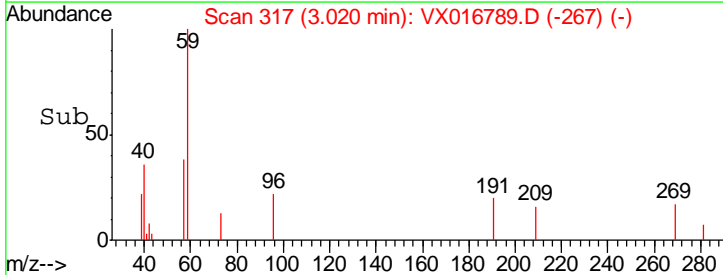
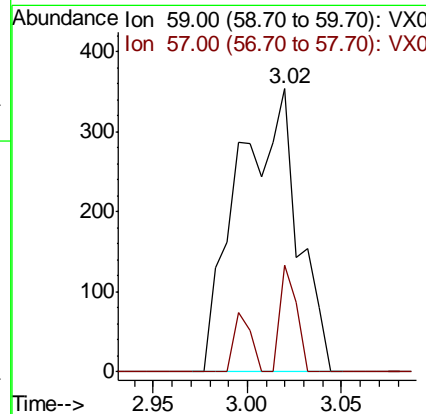
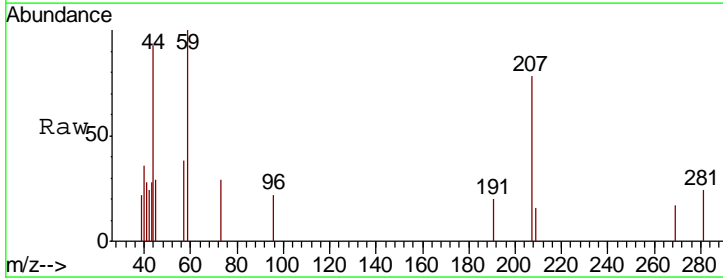
Instrument :
 MSVOA_X
 ClientSampled :
 93-94-COMP

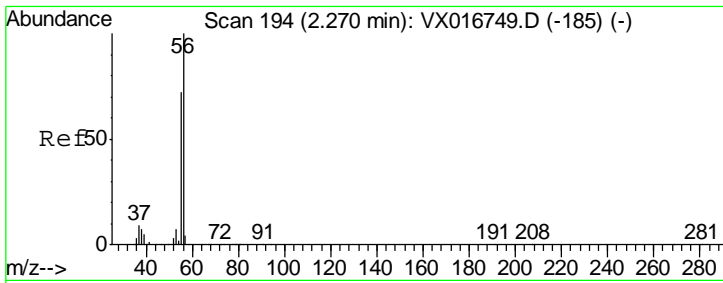
Tgt Ion: 168 Resp: 240414
 Ion Ratio Lower Upper
 168 100
 99 52.1 43.8 65.6



#11
 Tert butyl alcohol
 Concen: 1.144 ug/l
 RT: 3.02 min Scan# 317
 Delta R.T. 0.01 min
 Lab File: VX016789.D
 Acq: 16 Jun 2020 18:53

Tgt Ion: 59 Resp: 777
 Ion Ratio Lower Upper
 59 100
 57 10.3 8.2 12.2

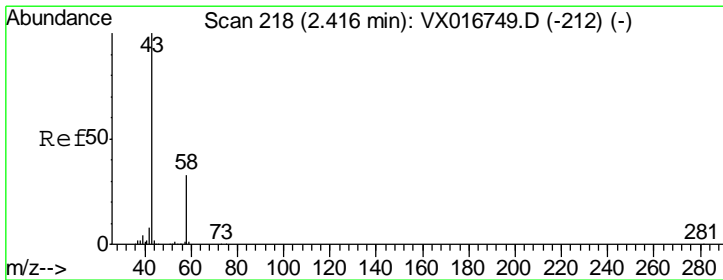
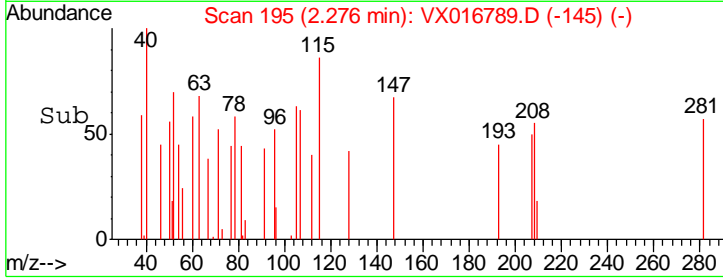
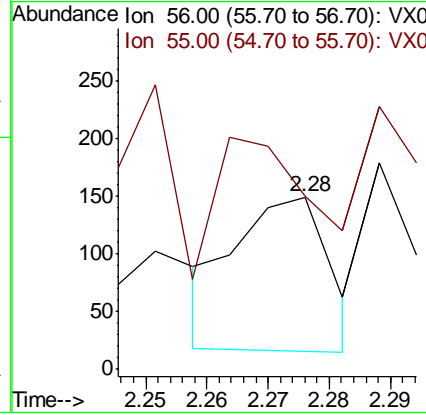
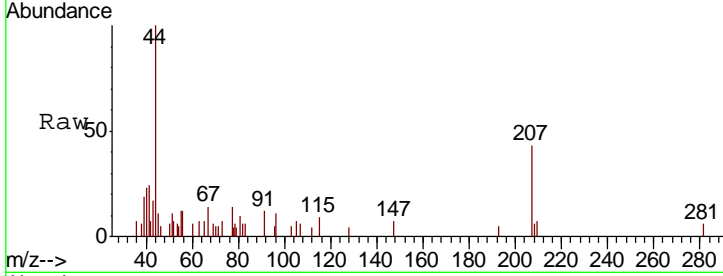




#13
 Acrolein
 Concen: 2.792 ug/l
 RT: 2.28 min Scan# 195
 Delta R.T. 0.01 min
 Lab File: VX016789.D
 Acq: 16 Jun 2020 18:53

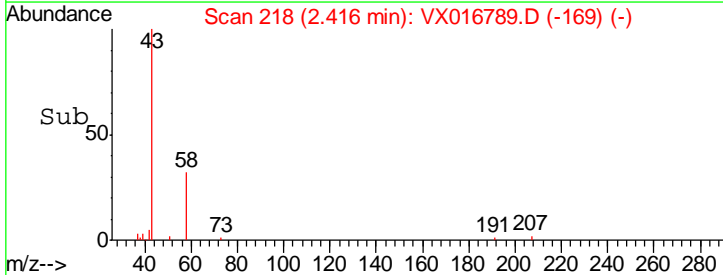
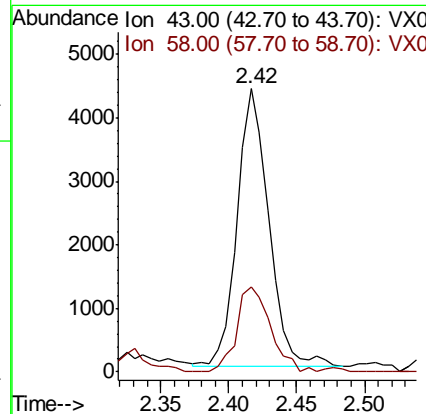
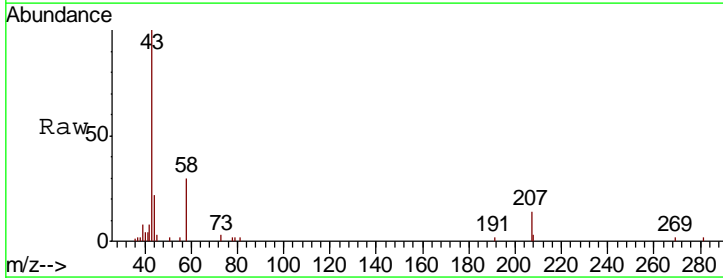
Instrument :
 MSVOA_X
ClientSampled :
 93-94-COMP

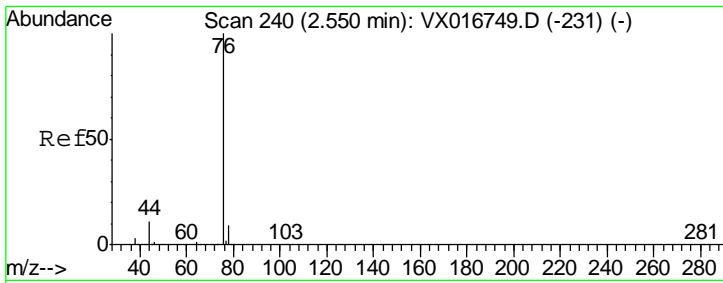
Tgt Ion: 56 Resp: 142
 Ion Ratio Lower Upper
 56 100
 55 91.5 58.2 87.4#



#16
 Acetone
 Concen: 5.770 ug/l
 RT: 2.42 min Scan# 218
 Delta R.T. -0.00 min
 Lab File: VX016789.D
 Acq: 16 Jun 2020 18:53

Tgt Ion: 43 Resp: 7078
 Ion Ratio Lower Upper
 43 100
 58 30.5 26.3 39.5

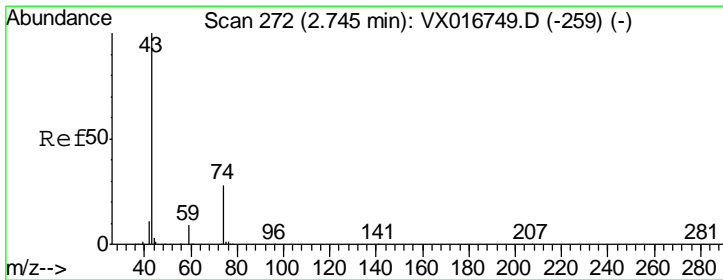
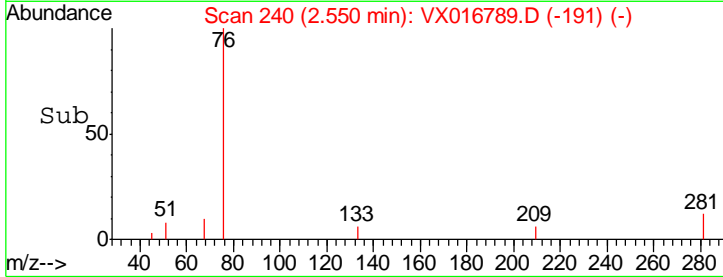
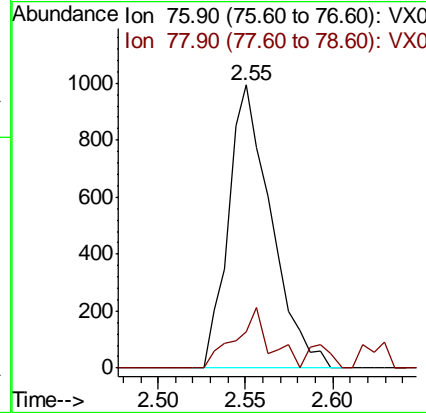
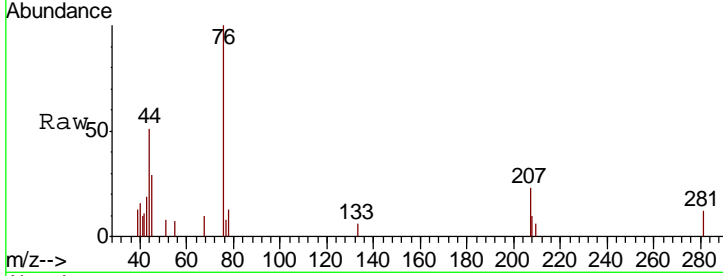




#17
 Carbon Disulfide
 Concen: 0.251 ug/l
 RT: 2.55 min Scan# 240
 Delta R.T. 0.00 min
 Lab File: VX016789.D
 Acq: 16 Jun 2020 18:53

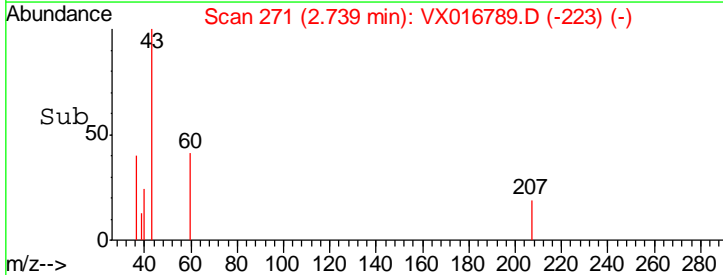
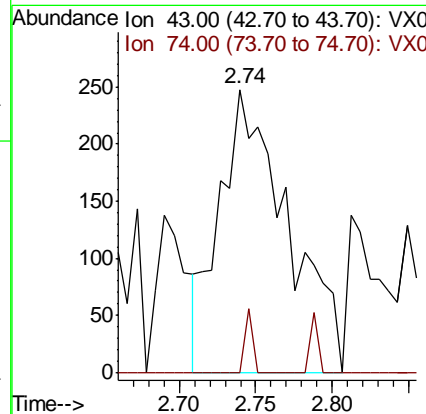
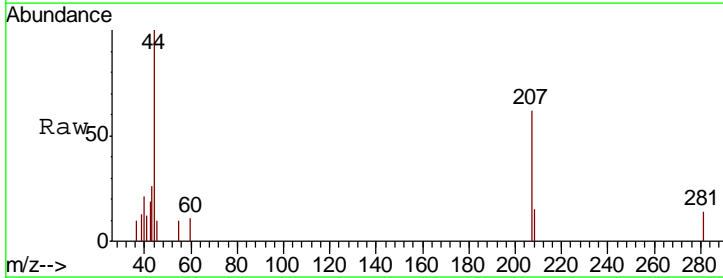
Instrument :
 MSVOA_X
 ClientSampleId :
 93-94-COMP

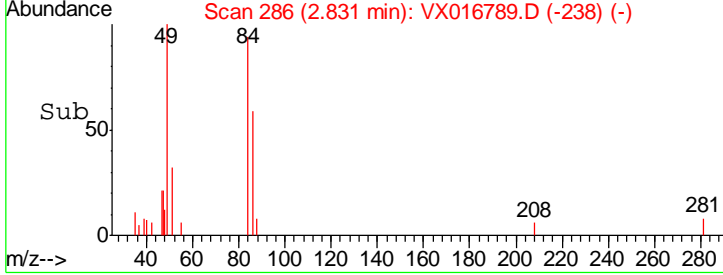
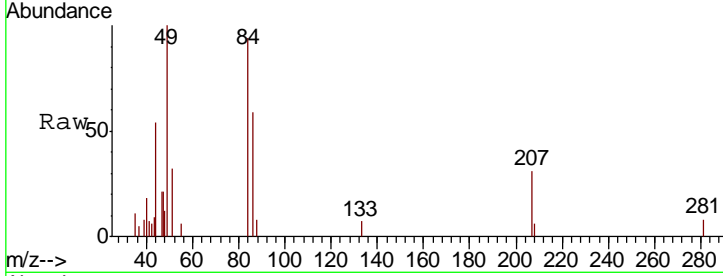
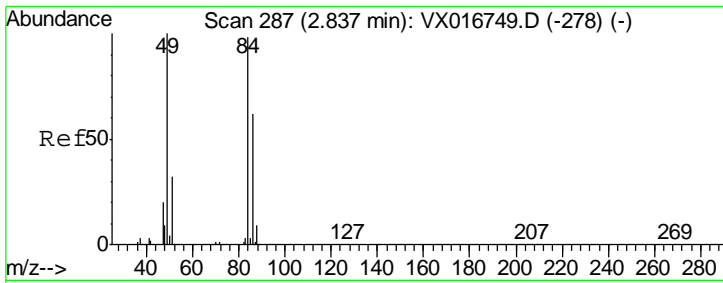
Tgt Ion	Resp	Lower	Upper
76	100		
78	12.9	7.3	10.9#



#18
 Methyl Acetate
 Concen: 0.232 ug/l
 RT: 2.74 min Scan# 271
 Delta R.T. -0.01 min
 Lab File: VX016789.D
 Acq: 16 Jun 2020 18:53

Tgt Ion	Resp	Lower	Upper
43	100		
74	2.6	22.4	33.6#

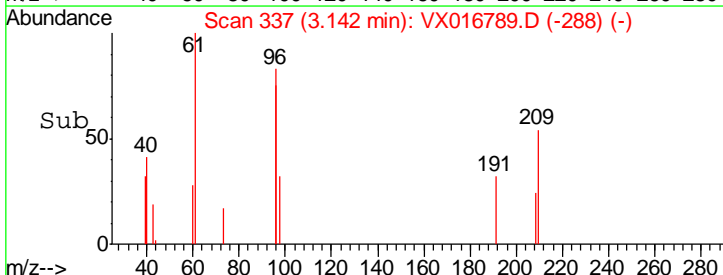
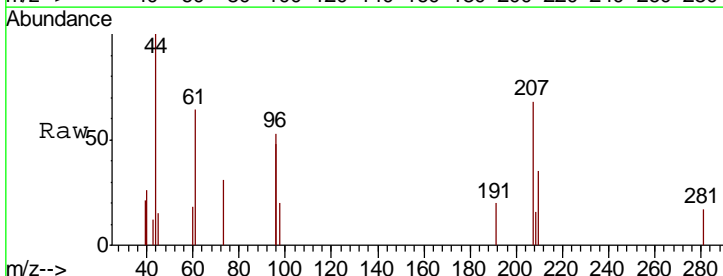
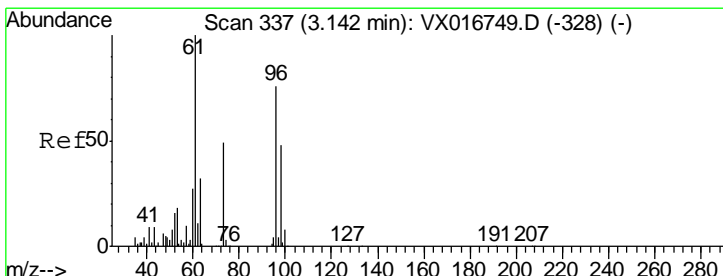
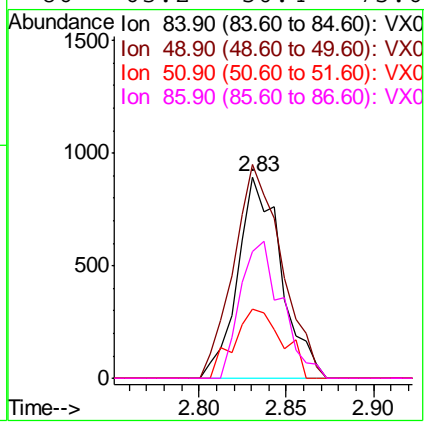




#20
Methylene Chloride
Concen: 0.589 ug/l
RT: 2.83 min Scan# 286
Delta R.T. -0.01 min
Lab File: VX016789.D
Acq: 16 Jun 2020 18:53

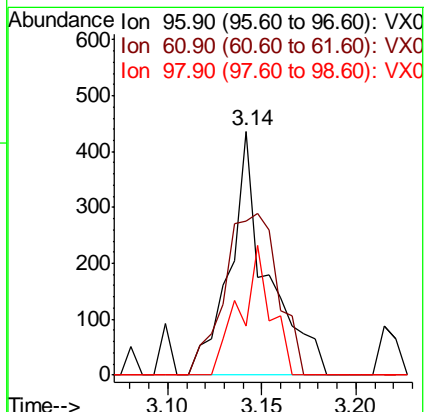
Instrument : MSVOA_X
ClientSampled : 93-94-COMP

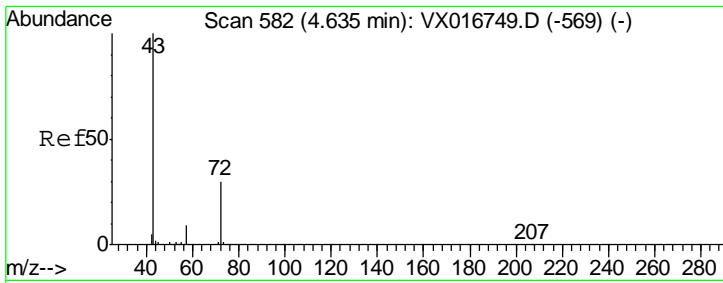
Tgt Ion	Resp	Lower	Upper
84	1556		
84	100		
49	106.3	81.8	122.8
51	34.5	25.8	38.8
86	63.2	50.4	75.6



#21
trans-1,2-Dichloroethene
Concen: 0.238 ug/l
RT: 3.14 min Scan# 337
Delta R.T. -0.00 min
Lab File: VX016789.D
Acq: 16 Jun 2020 18:53

Tgt Ion	Resp	Lower	Upper
96	601		
96	100		
61	63.1	105.4	158.2#
98	20.0	50.8	76.2#

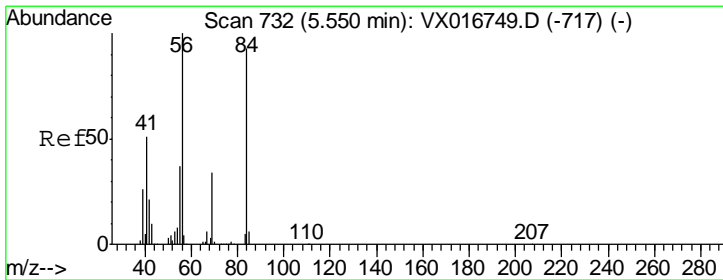
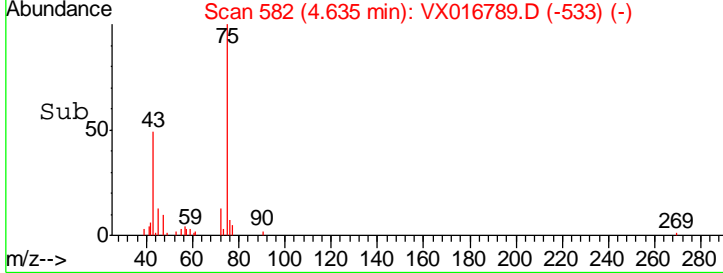
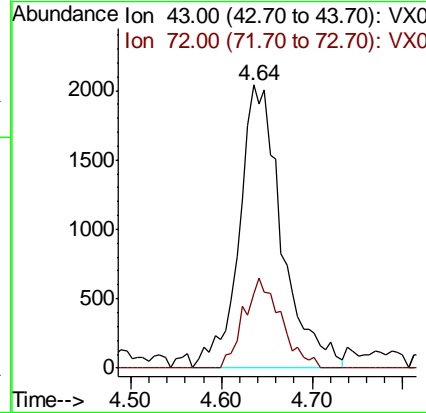
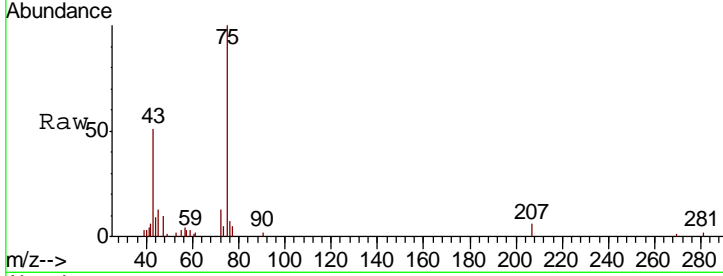




#25
 2-Butanone
 Concen: 3.599 ug/l
 RT: 4.64 min Scan# 582
 Delta R.T. -0.00 min
 Lab File: VX016789.D
 Acq: 16 Jun 2020 18:53

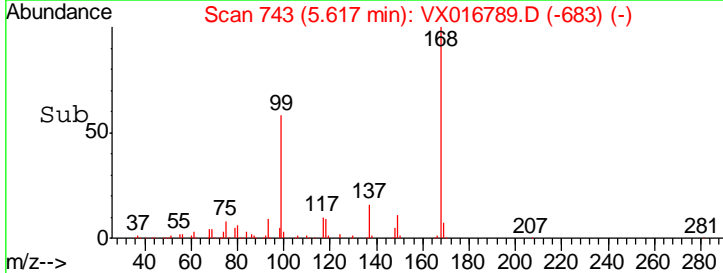
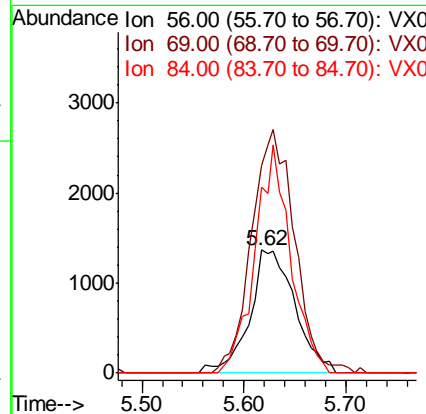
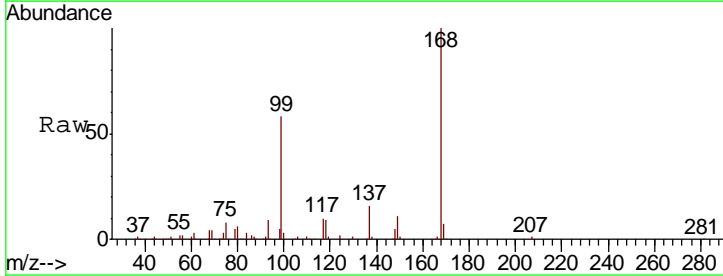
Instrument :
 MSVOA_X
 ClientSampled :
 93-94-COMP

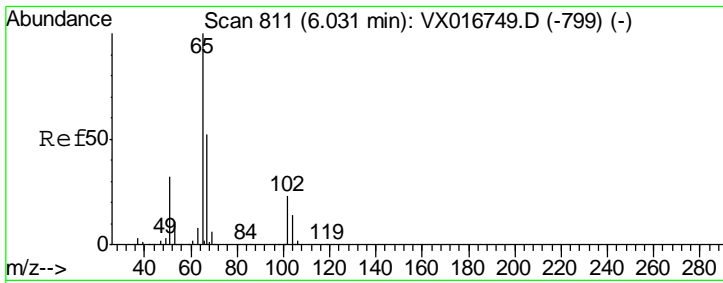
Tgt Ion	Resp	Lower	Upper
43	100		
72	26.3	24.2	36.4



#31
 Cyclohexane
 Concen: 1.887 ug/l
 RT: 5.62 min Scan# 743
 Delta R.T. 0.07 min
 Lab File: VX016789.D
 Acq: 16 Jun 2020 18:53

Tgt Ion	Resp	Lower	Upper
56	100		
69	169.3	27.1	40.7#
84	152.0	74.0	111.0#

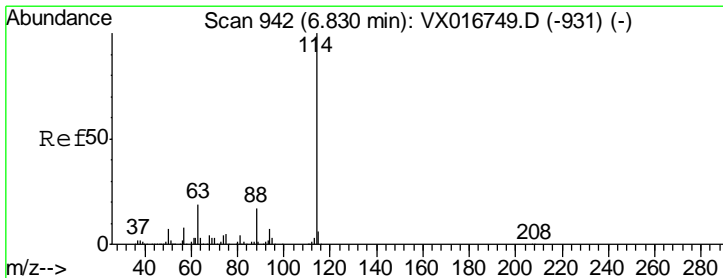
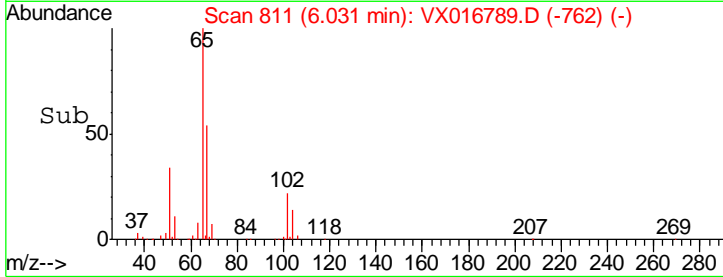
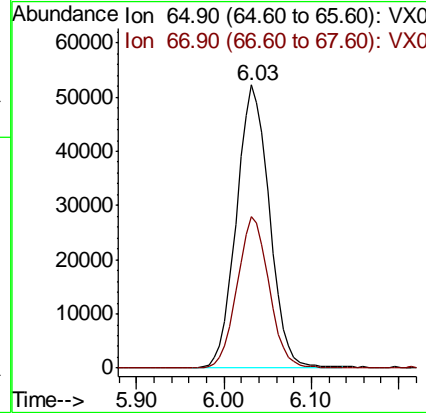
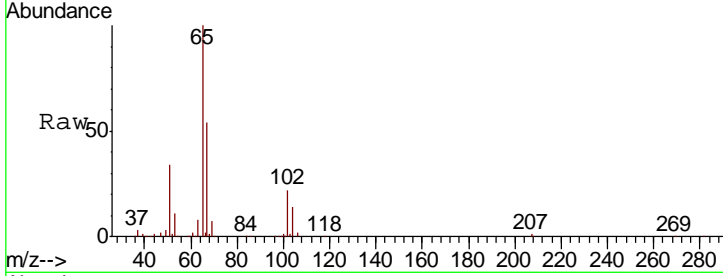




#33
 1,2-Dichloroethane-d4
 Concen: 50.631 ug/l
 RT: 6.03 min Scan# 811
 Delta R.T. 0.00 min
 Lab File: VX016789.D
 Acq: 16 Jun 2020 18:53

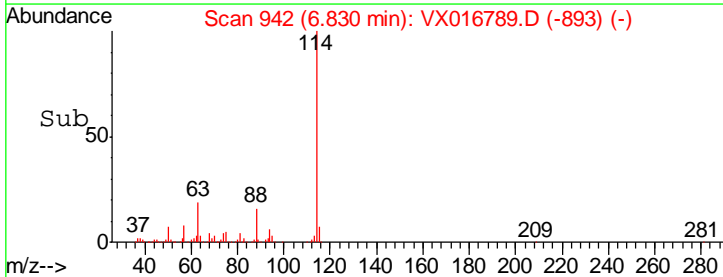
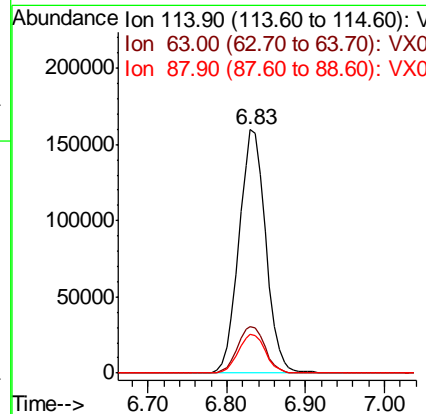
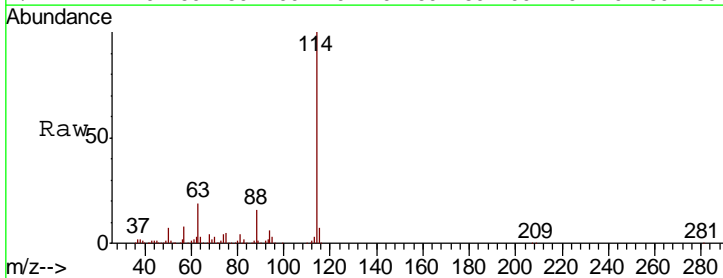
Instrument :
 MSVOA_X
 ClientSampleId :
 93-94-COMP

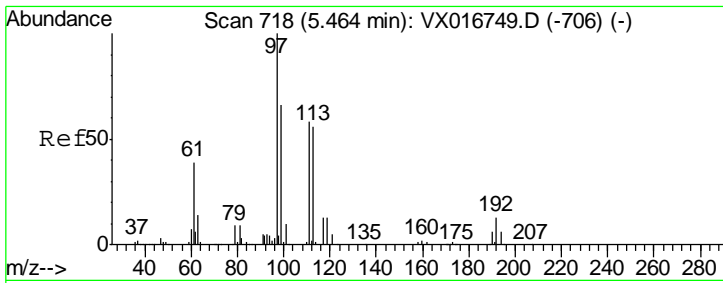
Tgt Ion	Resp	Lower	Upper
65	136911		
67	51.9	0.0	103.0



#34
 1,4-Difluorobenzene
 Concen: 50.000 ug/l
 RT: 6.83 min Scan# 942
 Delta R.T. -0.00 min
 Lab File: VX016789.D
 Acq: 16 Jun 2020 18:53

Tgt Ion	Resp	Lower	Upper
114	377659		
63	19.0	0.0	38.8
88	16.2	0.0	33.4

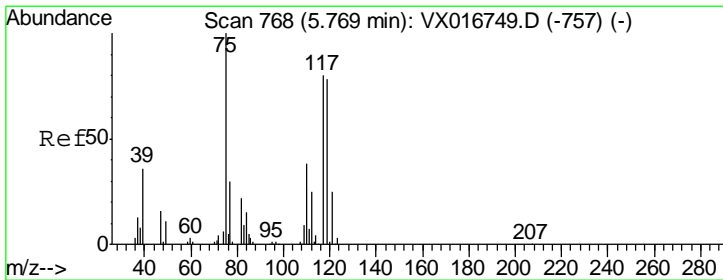
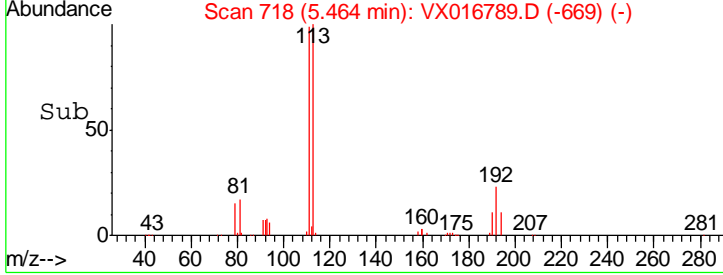
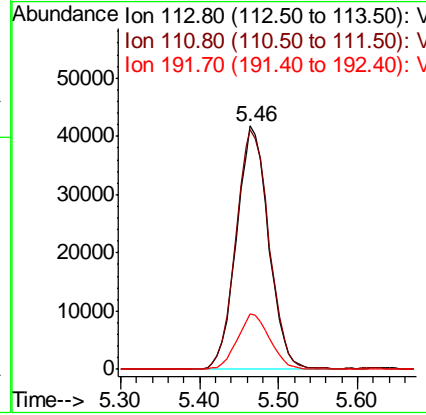
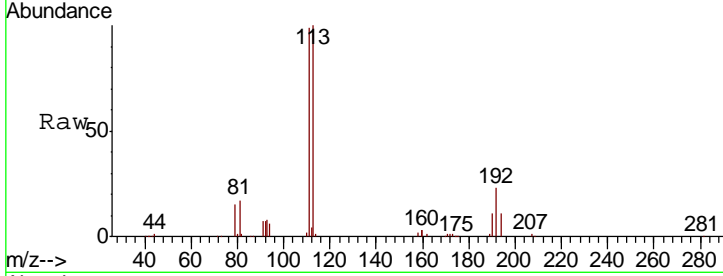




#35
 Dibromofluoromethane
 Concen: 50.684 ug/l
 RT: 5.46 min Scan# 718
 Delta R.T. -0.00 min
 Lab File: VX016789.D
 Acq: 16 Jun 2020 18:53

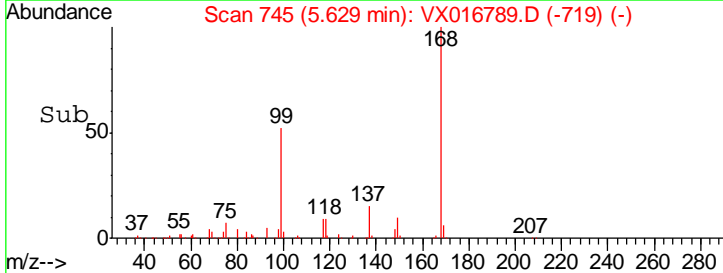
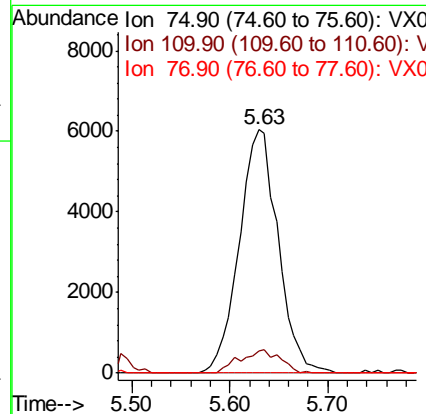
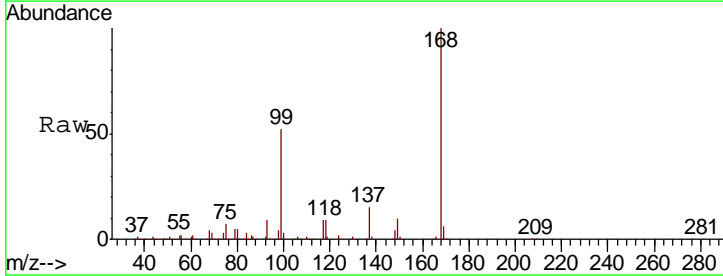
Instrument :
 MSVOA_X
 ClientSampled :
 93-94-COMP

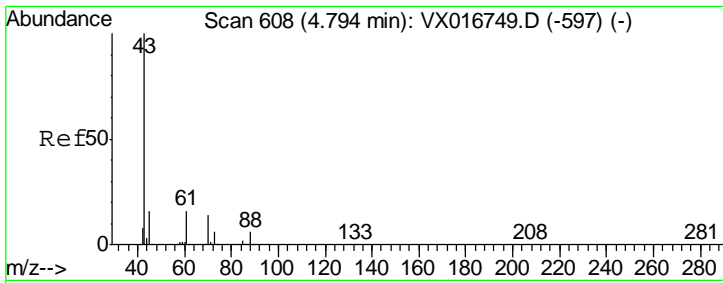
Tgt Ion	Resp	Lower	Upper
113	118098		
111	101.8	81.8	122.6
192	23.1	18.2	27.4



#36
 1,1-Dichloropropene
 Concen: 4.992 ug/l
 RT: 5.63 min Scan# 745
 Delta R.T. -0.14 min
 Lab File: VX016789.D
 Acq: 16 Jun 2020 18:53

Tgt Ion	Resp	Lower	Upper
75	16660		
110	10.0	18.4	55.2#
77	0.0	24.7	37.1#

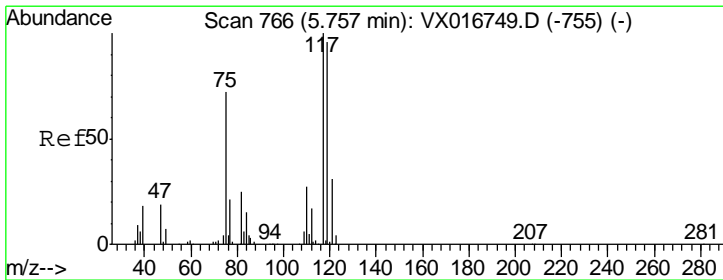
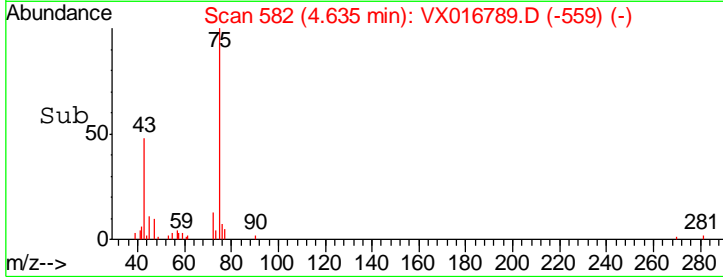
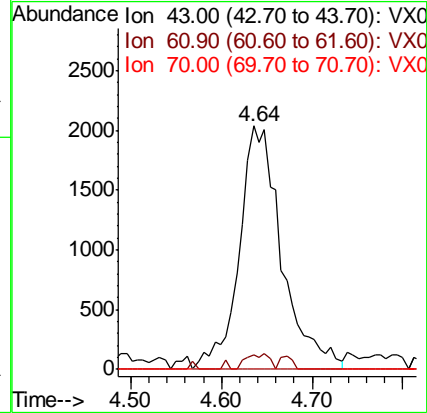
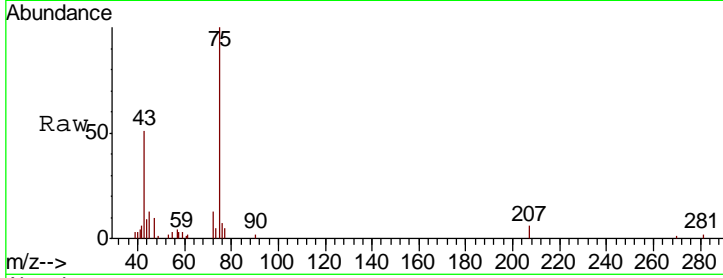




#37
Ethyl Acetate
Concen: 1.820 ug/l
RT: 4.64 min Scan# 582
Delta R.T. -0.16 min
Lab File: VX016789.D
Acq: 16 Jun 2020 18:53

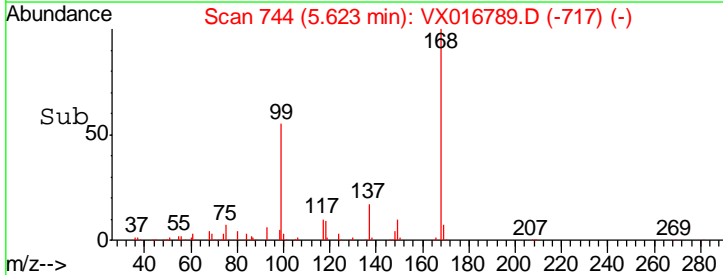
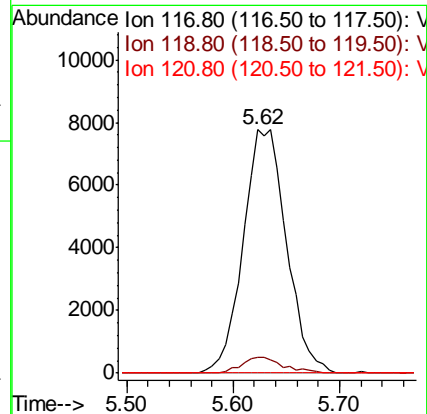
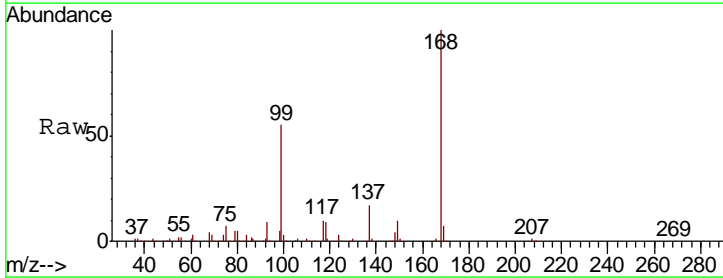
Instrument :
MSVOA_X
ClientSampled :
93-94-COMP

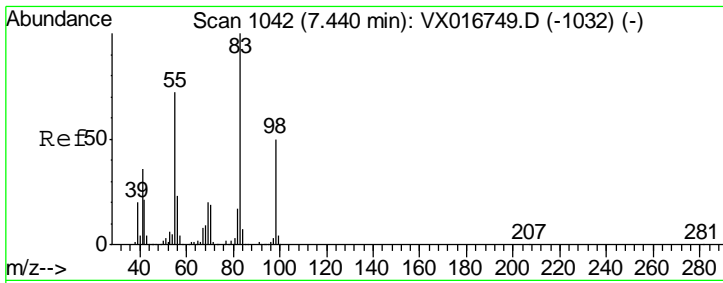
Tgt Ion	Resp	Lower	Upper
43	6653		
61	100	12.4	18.6#
70	0.0	10.8	16.2#



#38
Carbon Tetrachloride
Concen: 5.855 ug/l
RT: 5.62 min Scan# 744
Delta R.T. -0.13 min
Lab File: VX016789.D
Acq: 16 Jun 2020 18:53

Tgt Ion	Resp	Lower	Upper
117	22192		
119	100	76.7	115.1#
121	0.0	24.7	37.1#

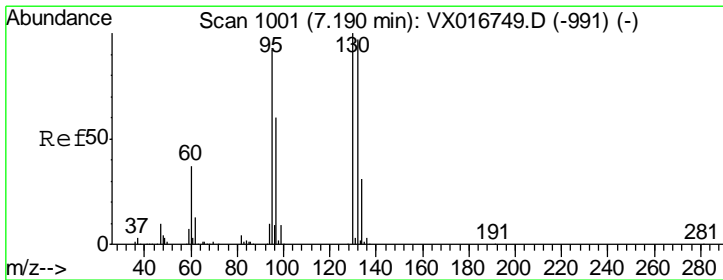
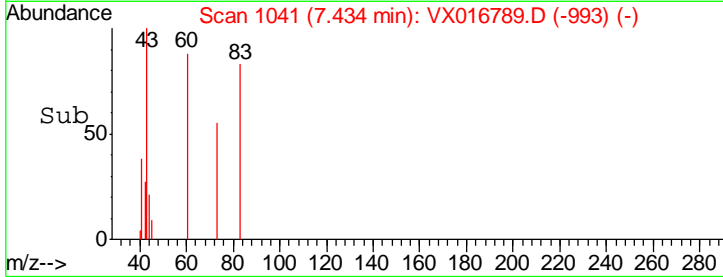
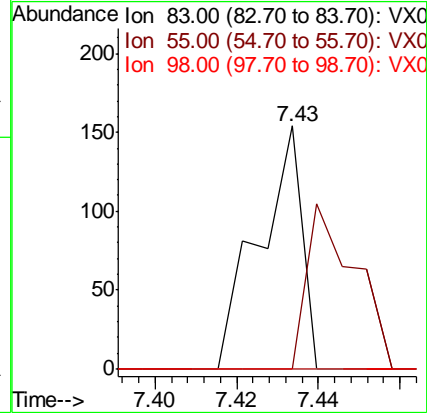
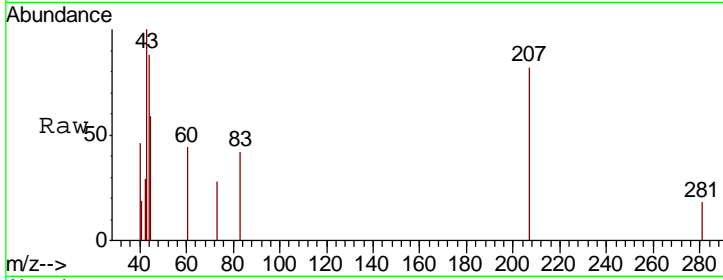




#39
 Methylcyclohexane
 Concen: 0.982 ug/l
 RT: 7.43 min Scan# 1041
 Delta R.T. -0.01 min
 Lab File: VX016789.D
 Acq: 16 Jun 2020 18:53

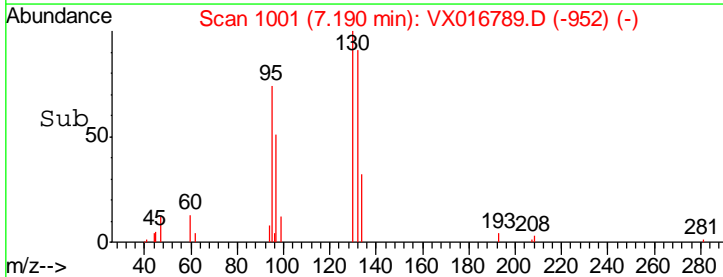
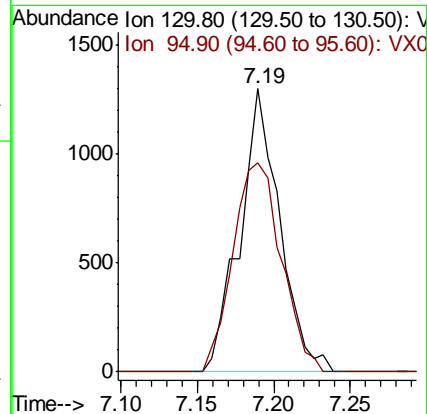
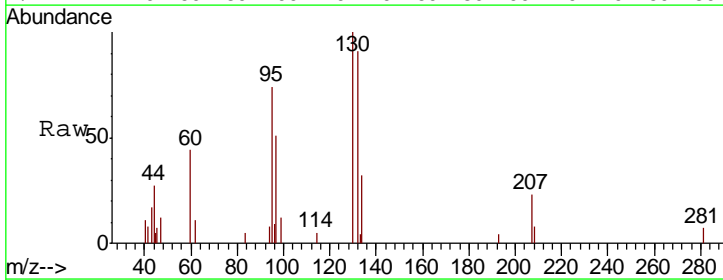
Instrument :
 MSVOA_X
 ClientSampleId :
 93-94-COMP

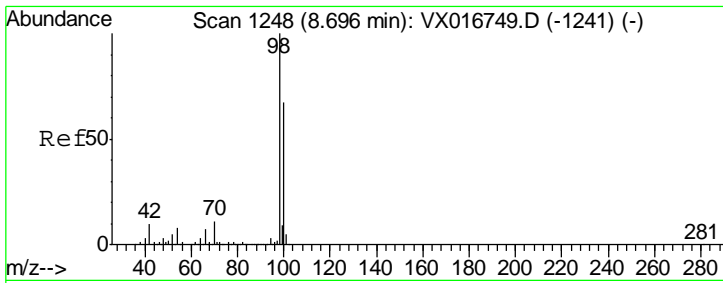
Tgt Ion	Resp	Lower	Upper
83	100		
55	0.0	57.3	85.9#
98	0.0	40.3	60.5#



#44
 Trichloroethene
 Concen: 0.746 ug/l
 RT: 7.19 min Scan# 1001
 Delta R.T. -0.00 min
 Lab File: VX016789.D
 Acq: 16 Jun 2020 18:53

Tgt Ion	Resp	Lower	Upper
130	100		
95	73.9	0.0	183.6

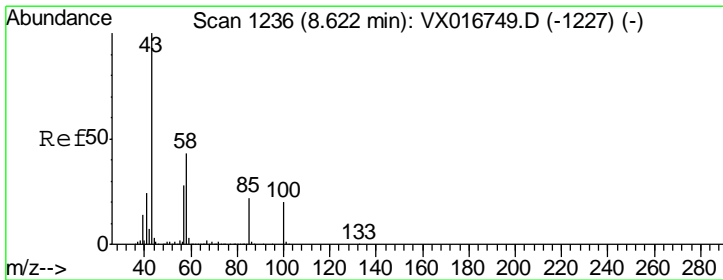
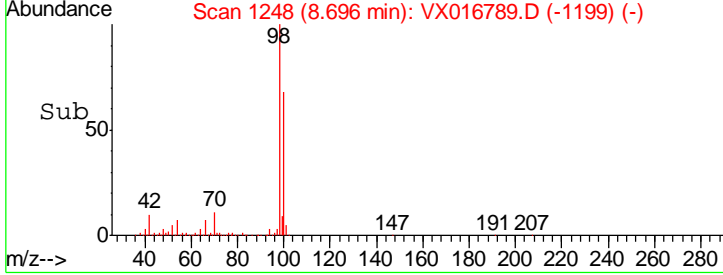
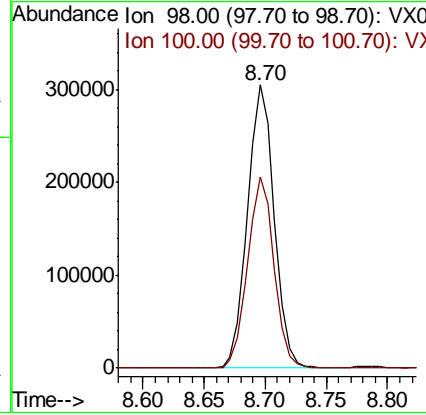
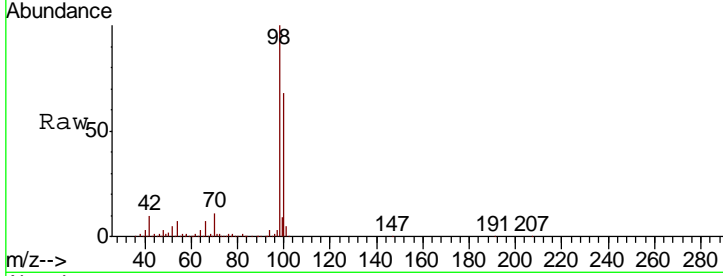




#50
 Toluene-d8
 Concen: 54.061 ug/l
 RT: 8.70 min Scan# 1248
 Delta R.T. -0.00 min
 Lab File: VX016789.D
 Acq: 16 Jun 2020 18:53

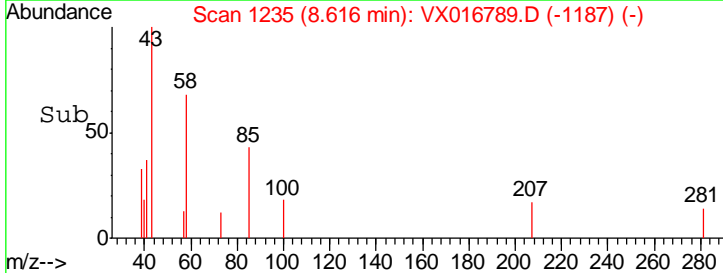
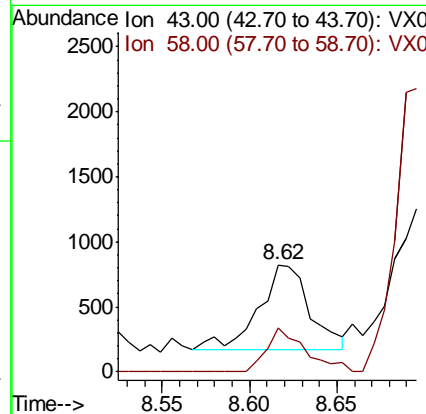
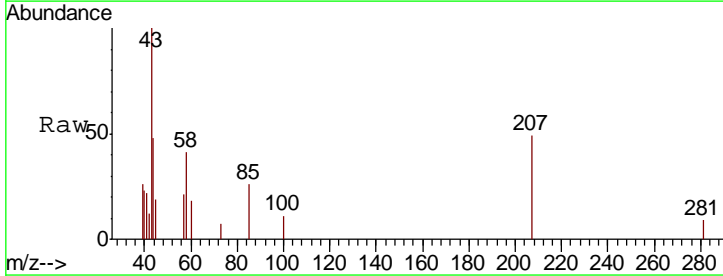
Instrument :
 MSVOA_X
ClientSampled :
 93-94-COMP

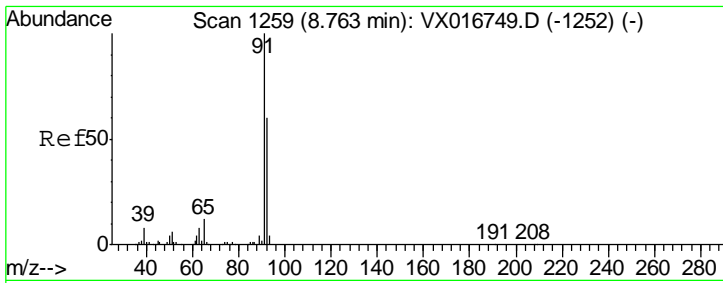
Tgt Ion: 98 Resp: 464475
 Ion Ratio Lower Upper
 98 100
 100 66.6 53.9 80.9



#51
 4-Methyl-2-Pentanone
 Concen: 0.371 ug/l
 RT: 8.62 min Scan# 1235
 Delta R.T. -0.01 min
 Lab File: VX016789.D
 Acq: 16 Jun 2020 18:53

Tgt Ion: 43 Resp: 1310
 Ion Ratio Lower Upper
 43 100
 58 40.2 34.6 52.0

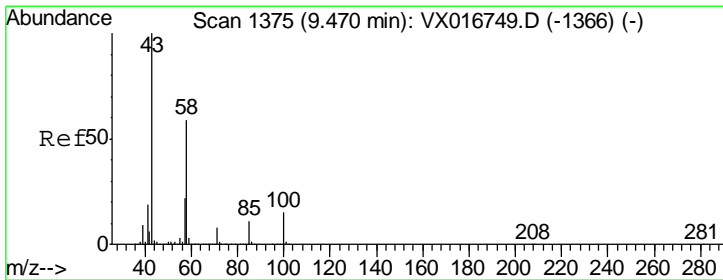
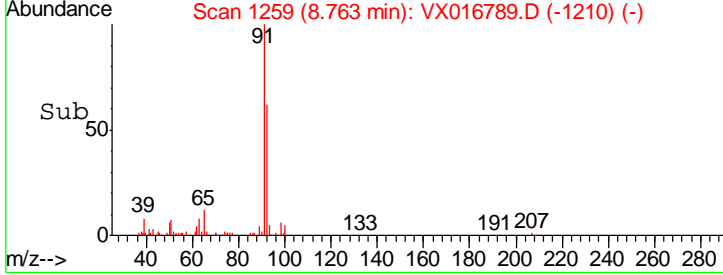
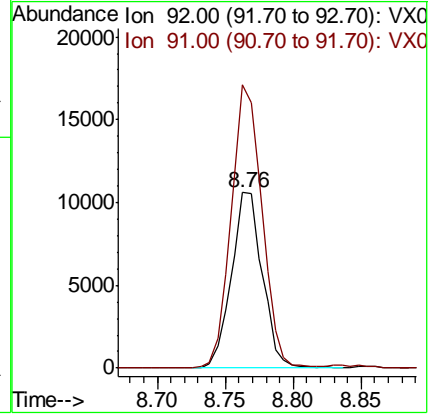
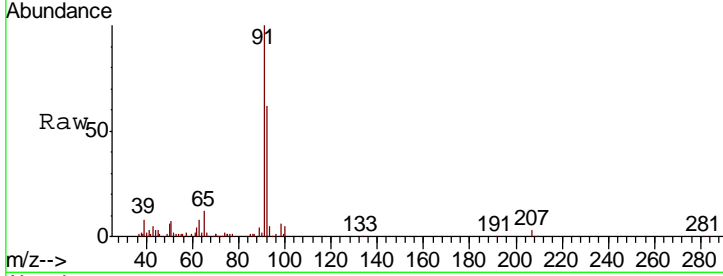




#52
 Toluene
 Concen: 2.543 ug/l
 RT: 8.76 min Scan# 1259
 Delta R.T. 0.00 min
 Lab File: VX016789.D
 Acq: 16 Jun 2020 18:53

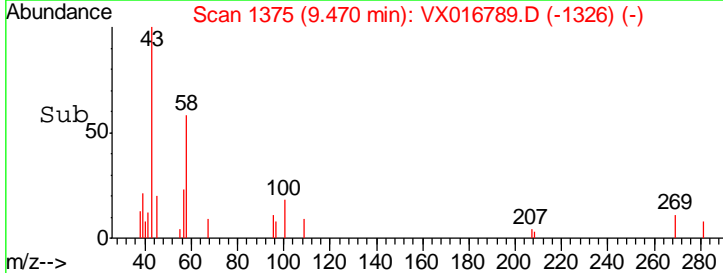
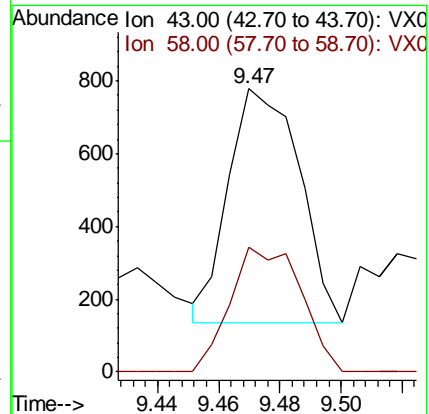
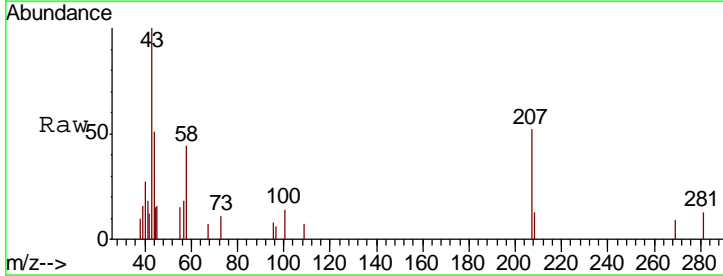
Instrument :
 MSVOA_X
 ClientSampled :
 93-94-COMP

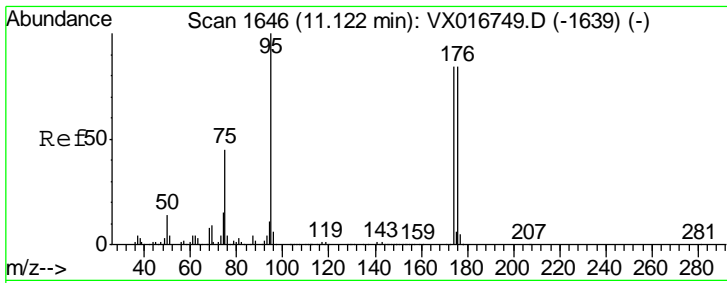
Tgt Ion	Resp	Lower	Upper
92	16784		
92	100		
91	161.1	136.1	204.1



#59
 2-Hexanone
 Concen: 0.378 ug/l
 RT: 9.47 min Scan# 1375
 Delta R.T. -0.00 min
 Lab File: VX016789.D
 Acq: 16 Jun 2020 18:53

Tgt Ion	Resp	Lower	Upper
43	1030		
43	100		
58	53.5	29.9	89.8

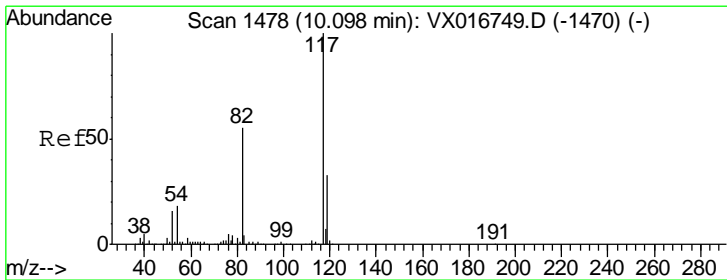
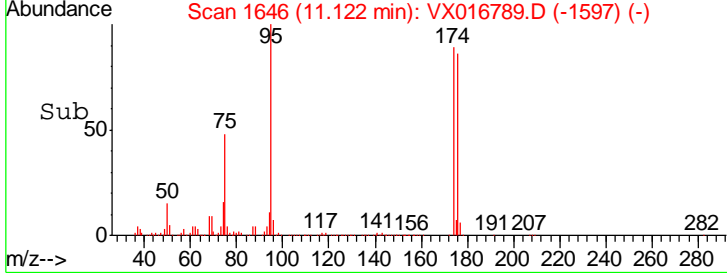
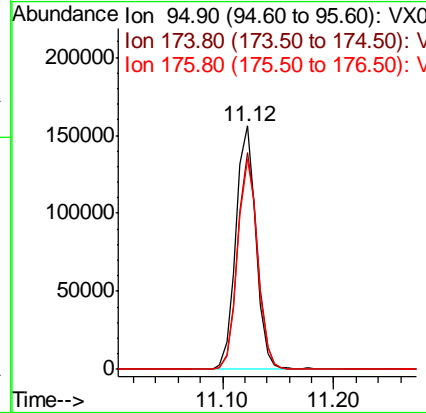
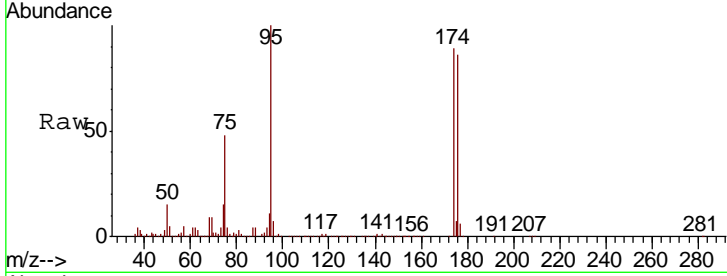




#62
 4-Bromofluorobenzene
 Concen: 59.138 ug/l
 RT: 11.12 min Scan# 1646
 Delta R.T. 0.00 min
 Lab File: VX016789.D
 Acq: 16 Jun 2020 18:53

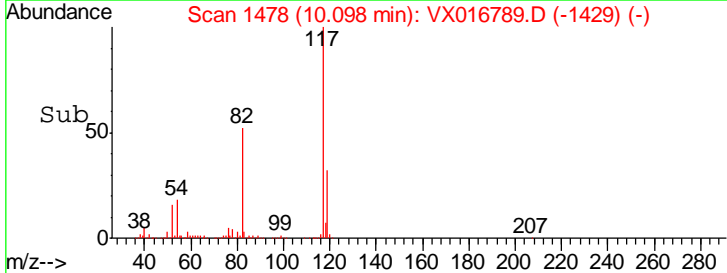
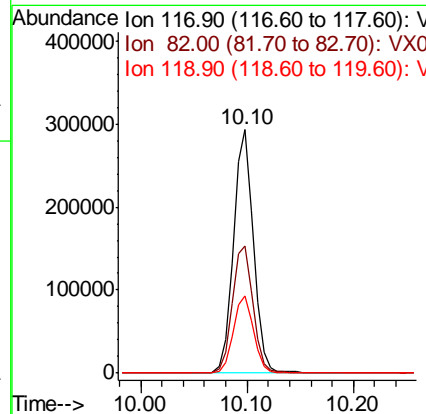
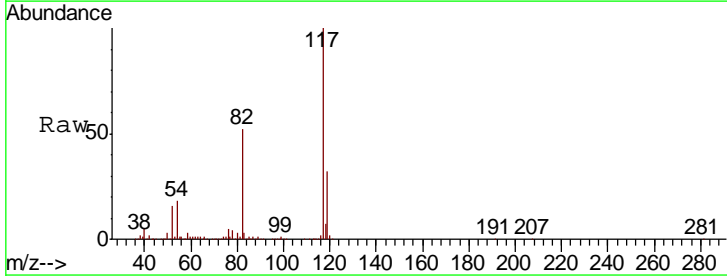
Instrument : MSVOA_X
 ClientSampled : 93-94-COMP

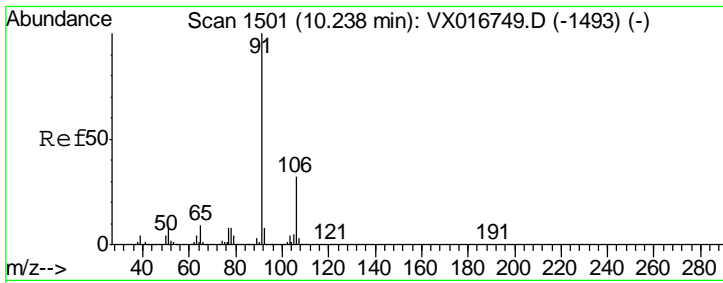
Tgt Ion	Resp	Lower	Upper
95	194347		
174	88.5	0.0	171.0
176	86.1	0.0	166.2



#63
 Chlorobenzene-d5
 Concen: 50.000 ug/l
 RT: 10.10 min Scan# 1478
 Delta R.T. -0.00 min
 Lab File: VX016789.D
 Acq: 16 Jun 2020 18:53

Tgt Ion	Resp	Lower	Upper
117	384999		
82	52.3	43.8	65.6
119	31.9	26.2	39.4

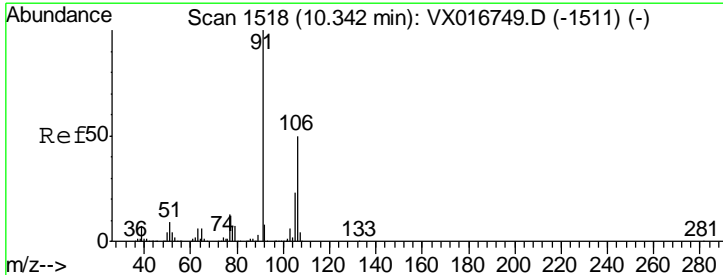
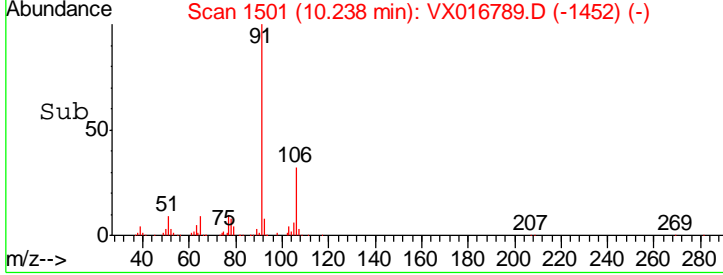
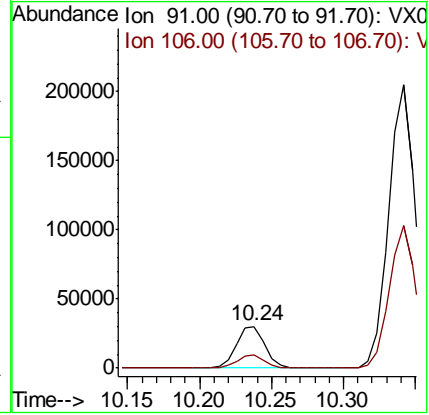
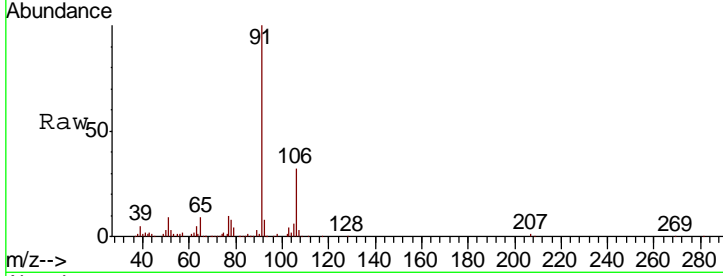




#67
 Ethyl Benzene
 Concen: 3.201 ug/l
 RT: 10.24 min Scan# 1501
 Delta R.T. -0.00 min
 Lab File: VX016789.D
 Acq: 16 Jun 2020 18:53

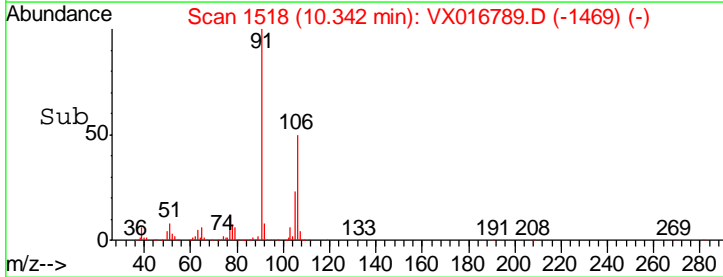
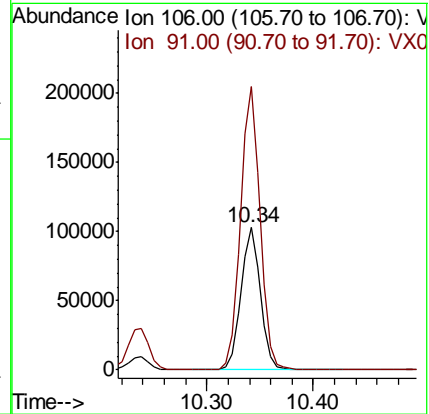
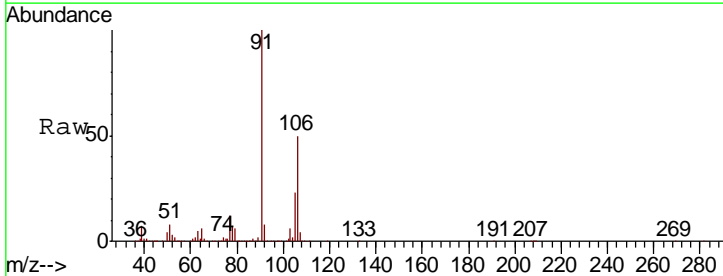
Instrument : MSVOA_X
 ClientSampled : 93-94-COMP

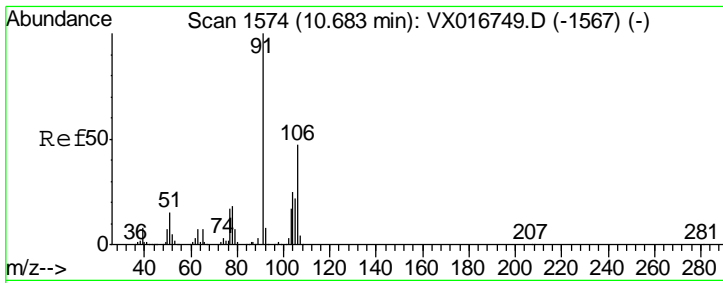
Tgt Ion	Resp	Lower	Upper
91	42275		
106	31.9	25.3	37.9



#68
 m/p-Xylenes
 Concen: 26.408 ug/l
 RT: 10.34 min Scan# 1518
 Delta R.T. 0.00 min
 Lab File: VX016789.D
 Acq: 16 Jun 2020 18:53

Tgt Ion	Resp	Lower	Upper
106	132231		
91	199.7	161.2	241.8

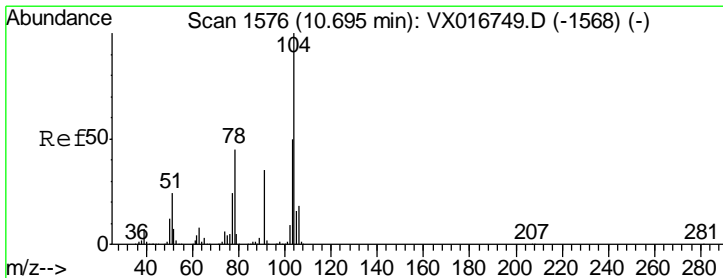
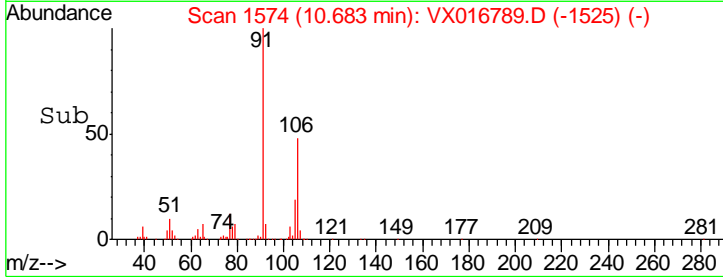
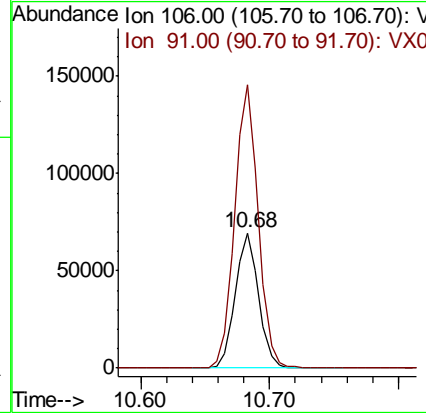
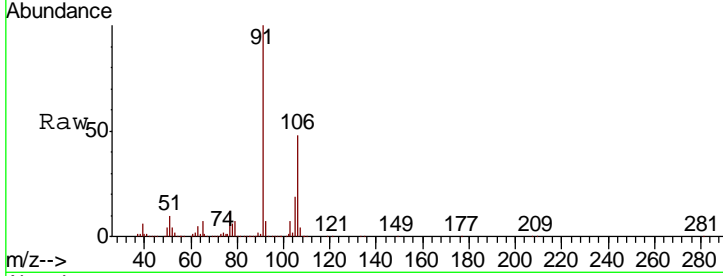




#69
 o-Xylene
 Concen: 18.286 ug/l
 RT: 10.68 min Scan# 1574
 Delta R.T. -0.00 min
 Lab File: VX016789.D
 Acq: 16 Jun 2020 18:53

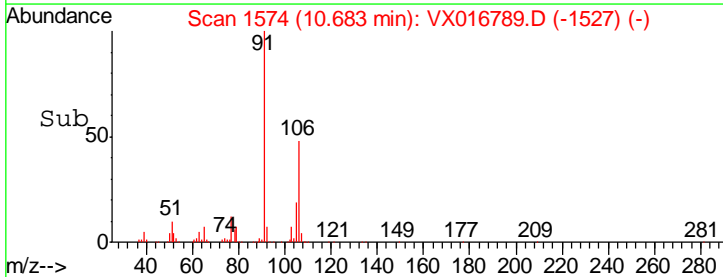
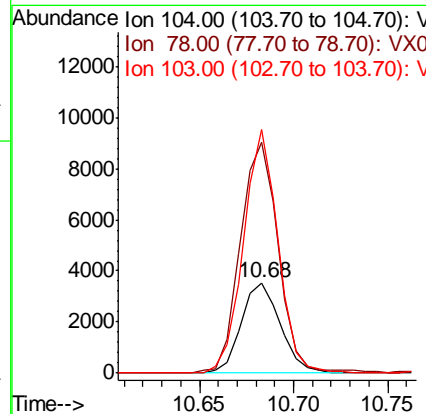
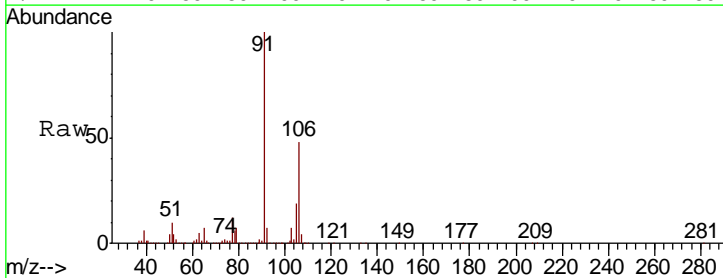
Instrument :
 MSVOA_X
 ClientSampled :
 93-94-COMP

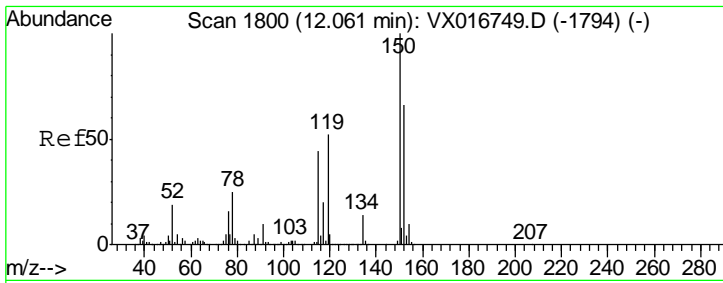
Tgt Ion	Resp	Lower	Upper
106	88210		
91	211.4	106.9	320.8



#70
 Styrene
 Concen: 0.608 ug/l
 RT: 10.68 min Scan# 1574
 Delta R.T. -0.01 min
 Lab File: VX016789.D
 Acq: 16 Jun 2020 18:53

Tgt Ion	Resp	Lower	Upper
104	5067		
78	250.1	39.8	59.8#
103	239.0	43.4	65.2#

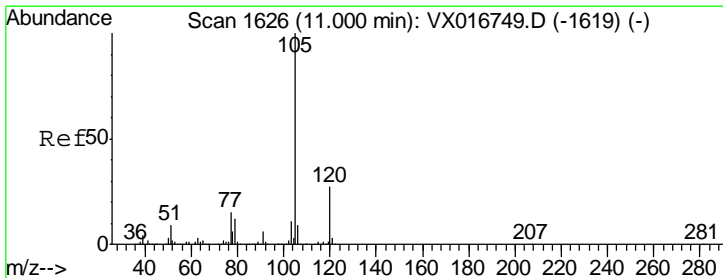
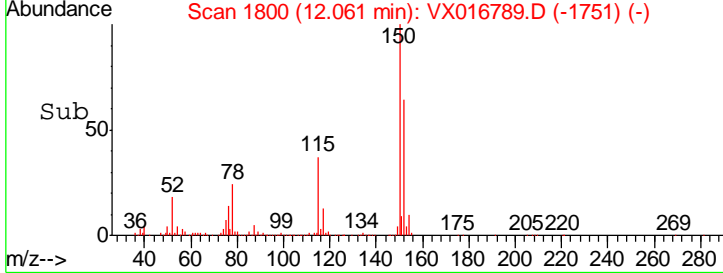
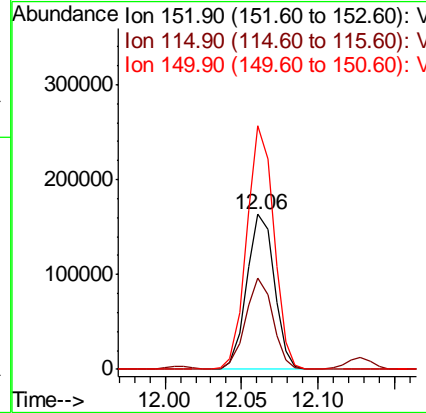
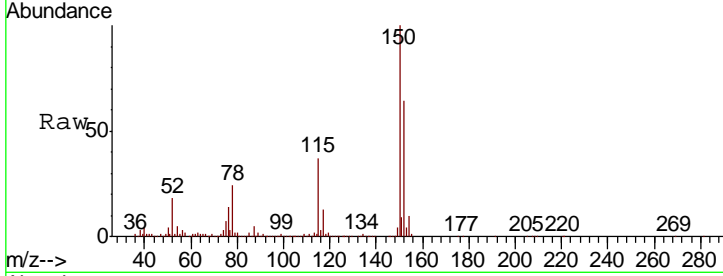




#72
 1,4-Dichlorobenzene-d4
 Concen: 50.000 ug/l
 RT: 12.06 min Scan# 1800
 Delta R.T. -0.00 min
 Lab File: VX016789.D
 Acq: 16 Jun 2020 18:53

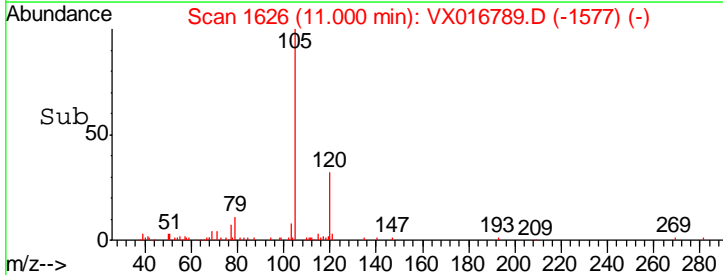
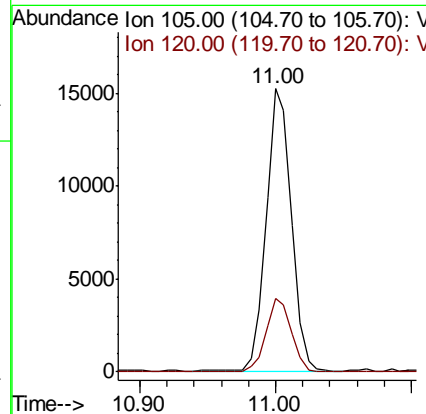
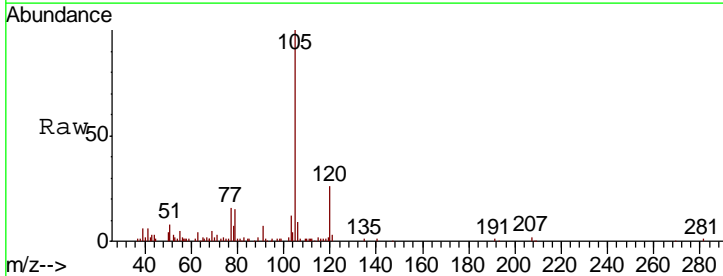
Instrument :
 MSVOA_X
 ClientSampled :
 93-94-COMP

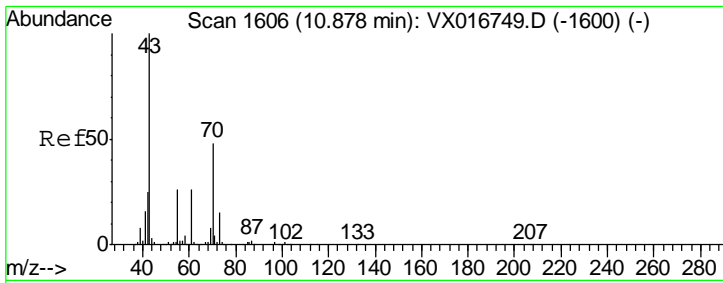
Tgt Ion	Resp	Lower	Upper
152	100		
115	57.8	40.3	120.8
150	153.8	0.0	337.4



#73
 Isopropylbenzene
 Concen: 1.492 ug/l
 RT: 11.00 min Scan# 1626
 Delta R.T. -0.00 min
 Lab File: VX016789.D
 Acq: 16 Jun 2020 18:53

Tgt Ion	Resp	Lower	Upper
105	100		
120	25.8	13.2	39.5

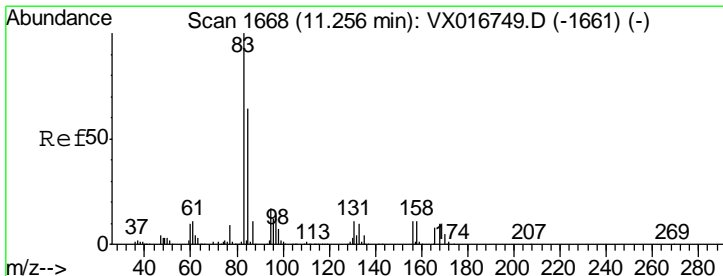
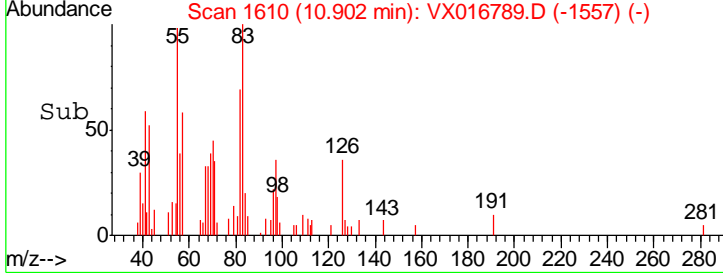
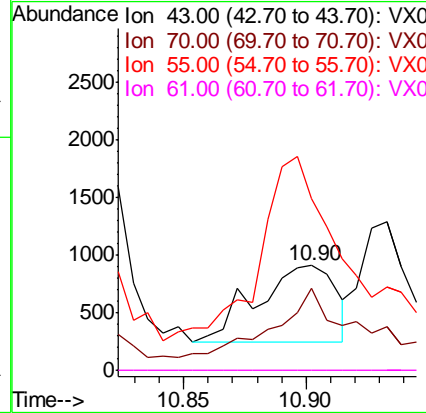
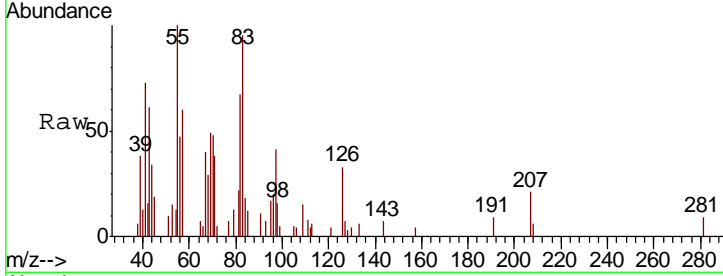




#74
 N-amyl acetate
 Concen: 0.286 ug/l
 RT: 10.90 min Scan# 1610
 Delta R.T. 0.02 min
 Lab File: VX016789.D
 Acq: 16 Jun 2020 18:53

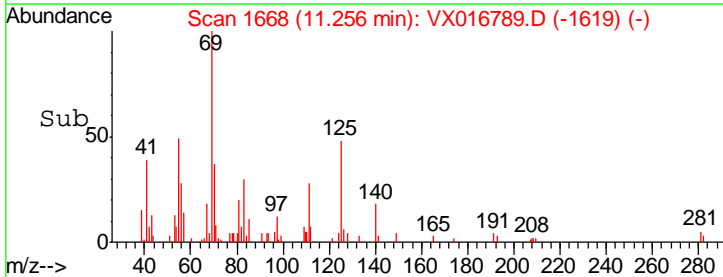
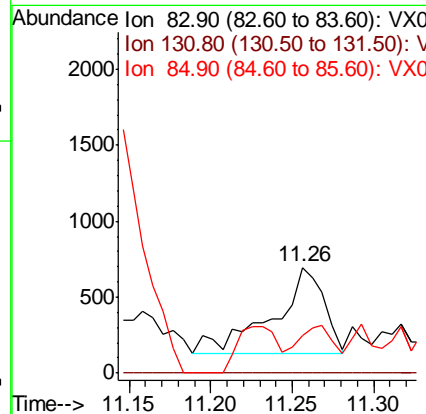
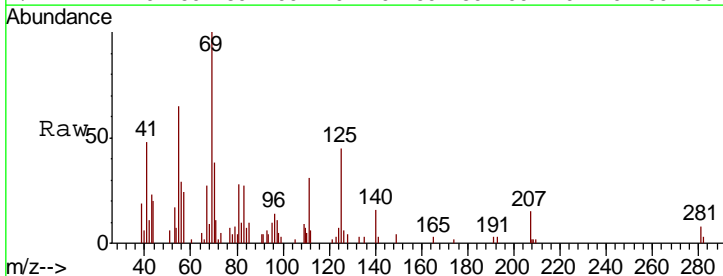
Instrument : MSVOA_X
 ClientSampled : 93-94-COMP

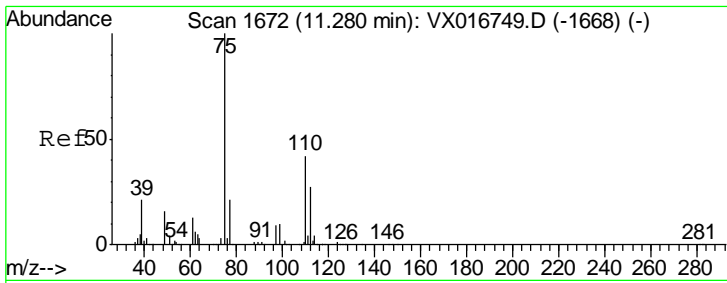
Tgt Ion	Resp	Lower	Upper
43	1493		
70	99.0	39.8	59.6#
55	229.5	21.7	32.5#
61	0.0	21.6	32.4#



#75
 1,1,2,2-Tetrachloroethane
 Concen: 0.319 ug/l
 RT: 11.26 min Scan# 1668
 Delta R.T. -0.00 min
 Lab File: VX016789.D
 Acq: 16 Jun 2020 18:53

Tgt Ion	Resp	Lower	Upper
83	1263		
131	0.0	5.7	17.0#
85	0.0	32.4	97.2#

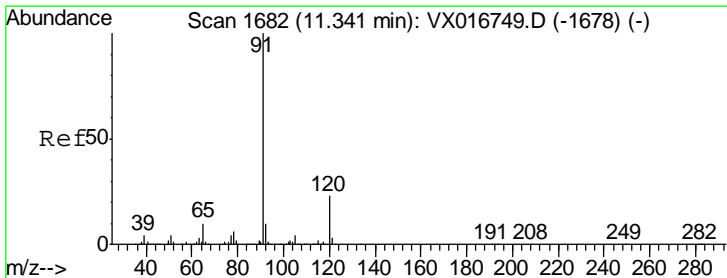
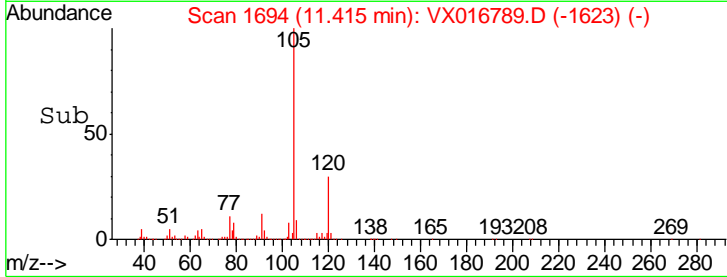
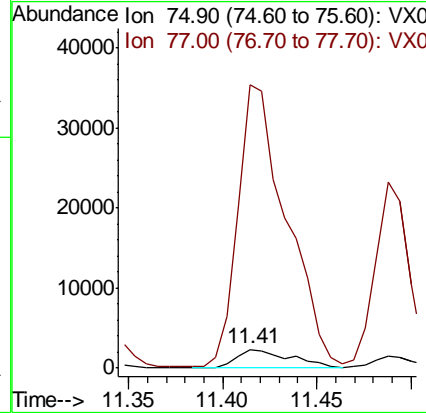
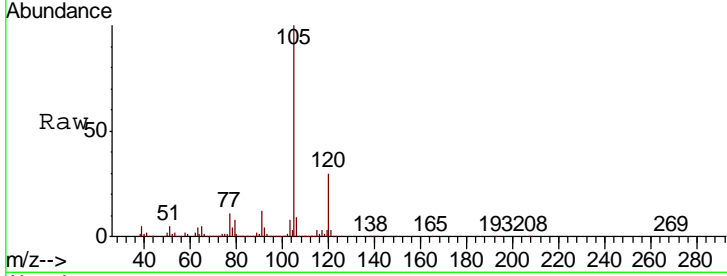




#76
 1,2,3-Trichloropropane
 Concen: 1.084 ug/l
 RT: 11.41 min Scan# 1694
 Delta R.T. 0.13 min
 Lab File: VX016789.D
 Acq: 16 Jun 2020 18:53

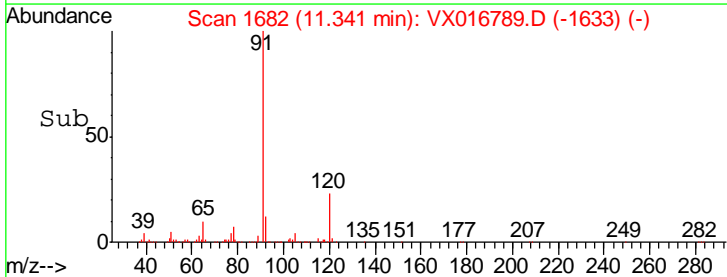
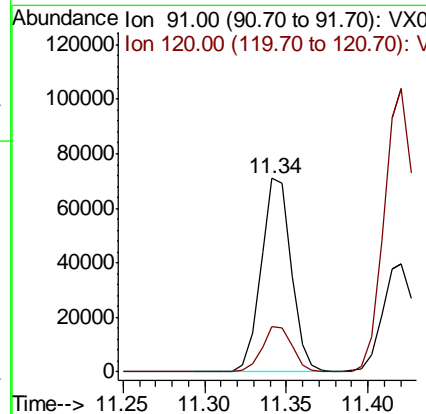
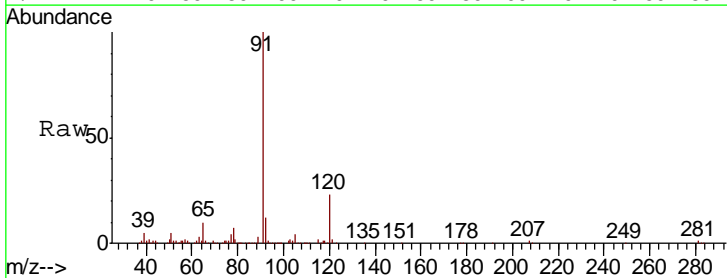
Instrument : MSVOA_X
 ClientSampled : 93-94-COMP

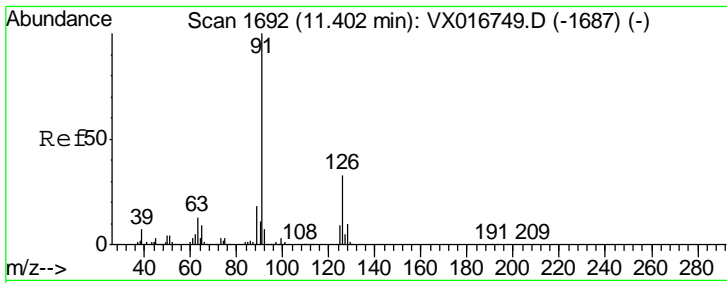
Tgt Ion: 75 Resp: 4670
 Ion Ratio Lower Upper
 75 100
 77 1352.1 20.3 60.9#



#78
 n-propylbenzene
 Concen: 6.240 ug/l
 RT: 11.34 min Scan# 1682
 Delta R.T. -0.00 min
 Lab File: VX016789.D
 Acq: 16 Jun 2020 18:53

Tgt Ion: 91 Resp: 91125
 Ion Ratio Lower Upper
 91 100
 120 23.3 12.0 36.0

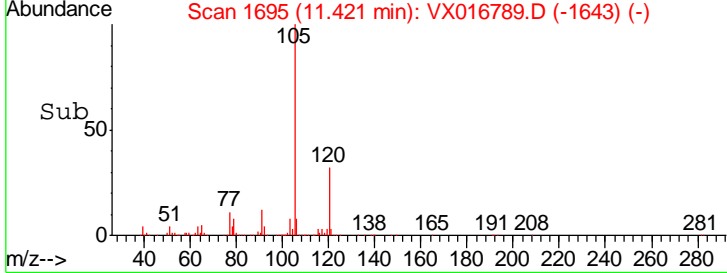
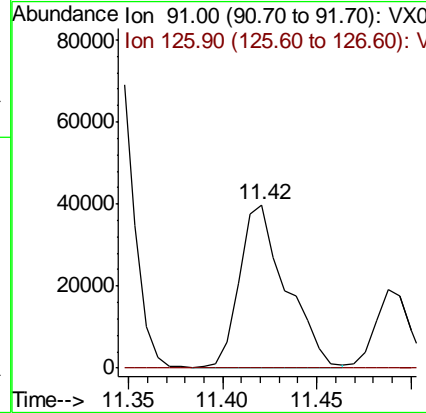
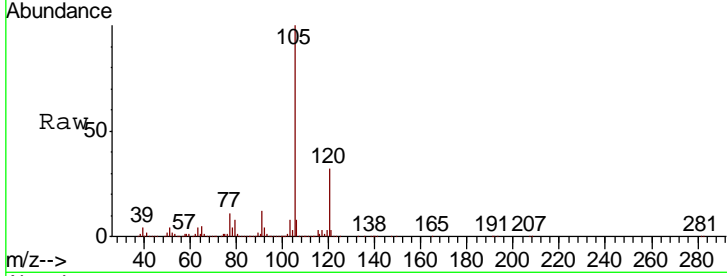




#79
 2-Chlorotoluene
 Concen: 7.377 ug/l
 RT: 11.42 min Scan# 1695
 Delta R.T. 0.02 min
 Lab File: VX016789.D
 Acq: 16 Jun 2020 18:53

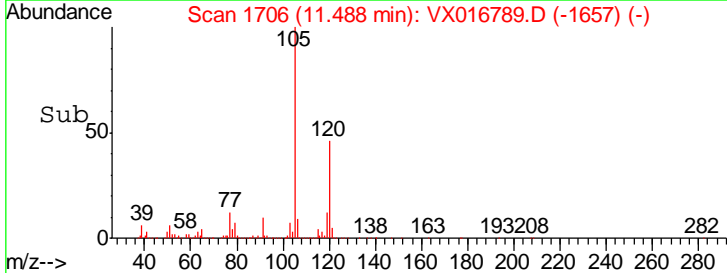
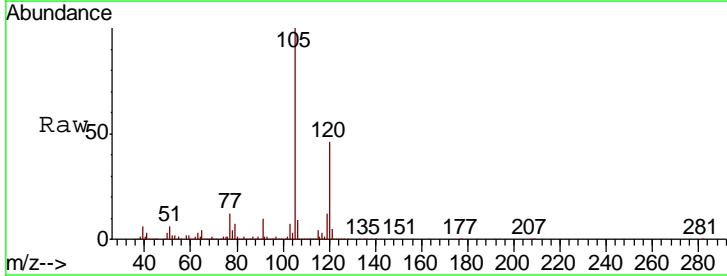
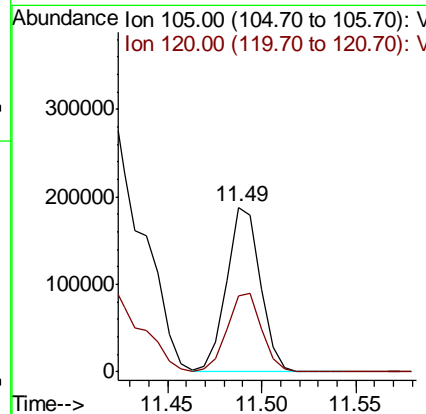
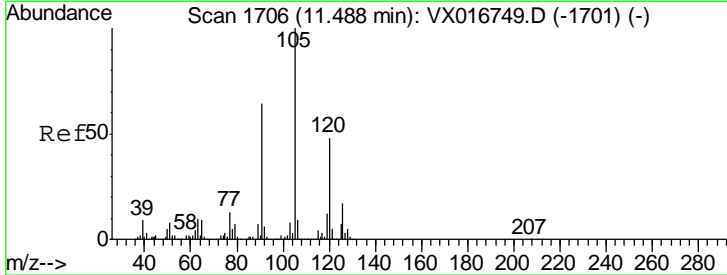
Instrument : MSVOA_X
 Client Sampled : 93-94-COMP

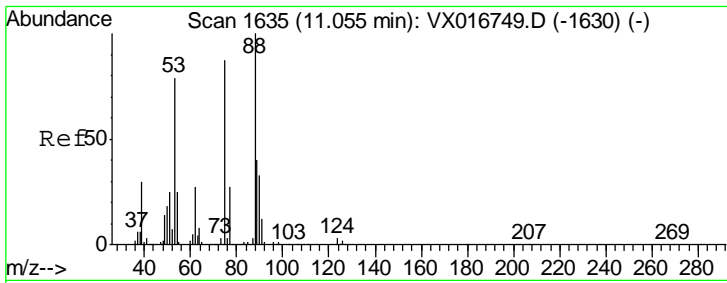
Tgt Ion: 91 Resp: 68118
 Ion Ratio Lower Upper
 91 100
 126 0.0 17.2 51.5#



#80
 1,3,5-Trimethylbenzene
 Concen: 20.840 ug/l
 RT: 11.49 min Scan# 1706
 Delta R.T. -0.00 min
 Lab File: VX016789.D
 Acq: 16 Jun 2020 18:53

Tgt Ion: 105 Resp: 234898
 Ion Ratio Lower Upper
 105 100
 120 48.4 24.4 73.4

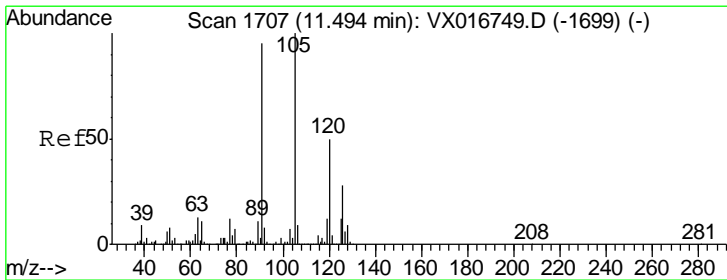
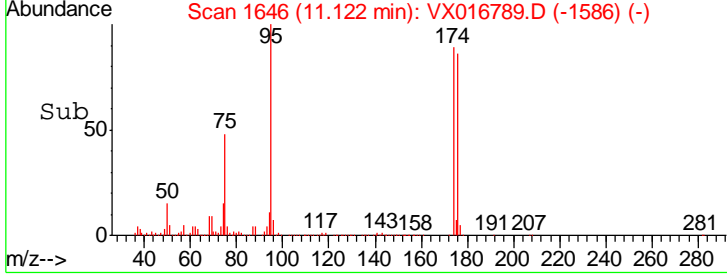
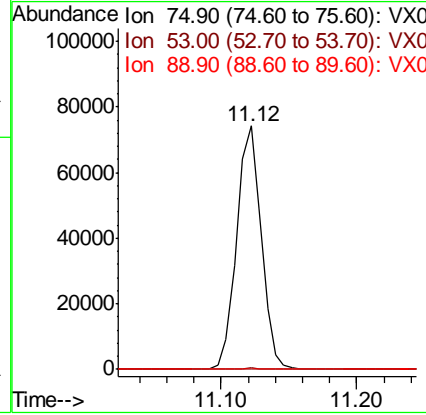
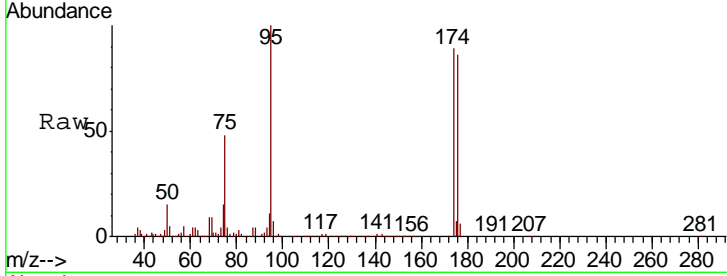




#81
 trans-1,4-Dichloro-2-butene
 Concen: 54.425 ug/l
 RT: 11.12 min Scan# 1646
 Delta R.T. 0.07 min
 Lab File: VX016789.D
 Acq: 16 Jun 2020 18:53

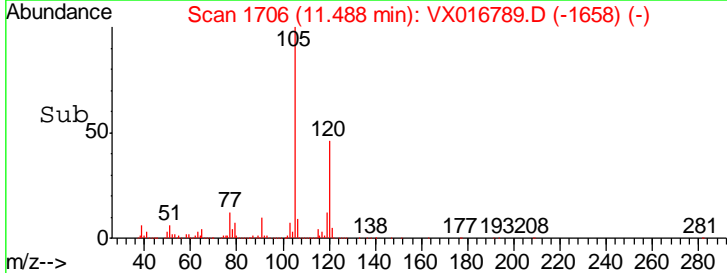
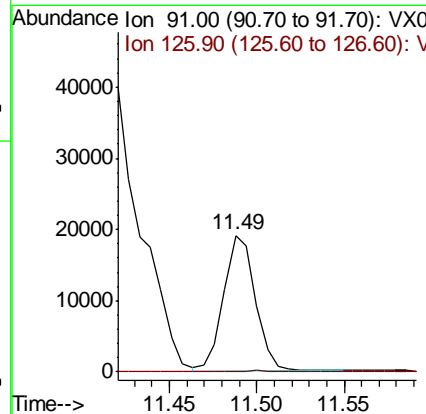
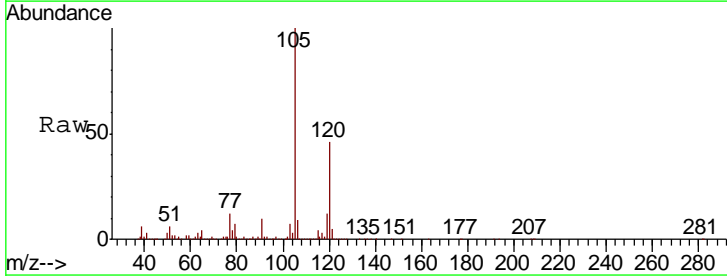
Instrument : MSVOA_X
 ClientSampled : 93-94-COMP

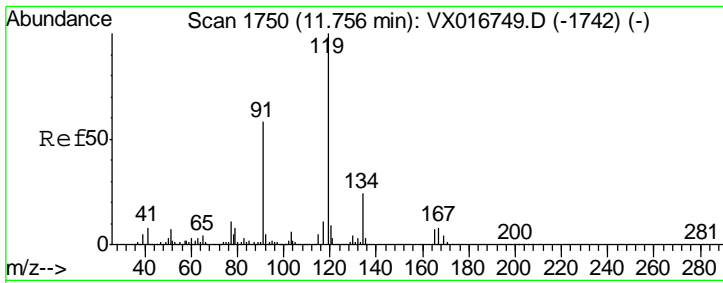
Tgt Ion	Resp	Lower	Upper
75	100		
53	0.4	71.4	107.0#
89	0.0	39.1	58.7#



#82
 4-Chlorotoluene
 Concen: 2.223 ug/l
 RT: 11.49 min Scan# 1706
 Delta R.T. -0.01 min
 Lab File: VX016789.D
 Acq: 16 Jun 2020 18:53

Tgt Ion	Resp	Lower	Upper
91	100		
126	0.6	15.2	45.6#

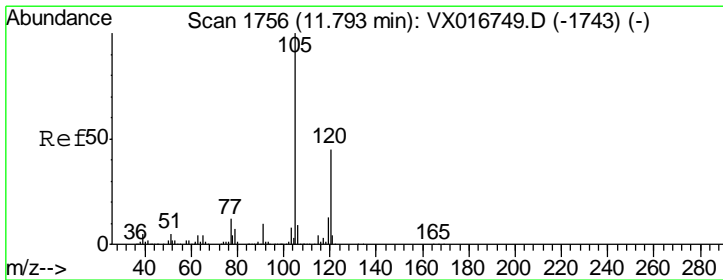
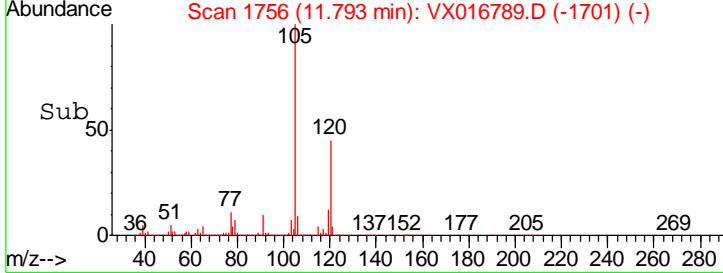
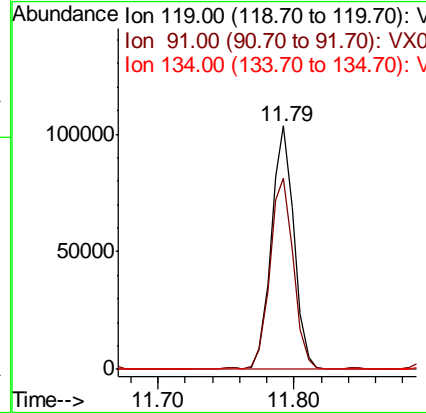
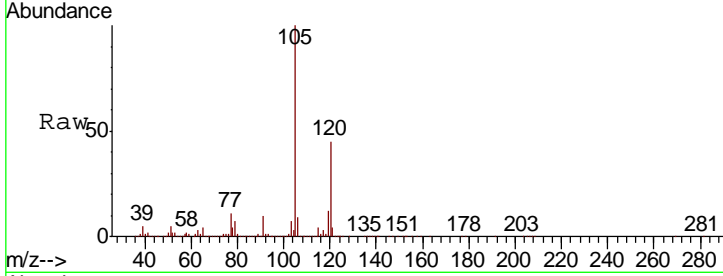




#83
 tert-Butylbenzene
 Concen: 11.722 ug/l
 RT: 11.79 min Scan# 1756
 Delta R.T. 0.04 min
 Lab File: VX016789.D
 Acq: 16 Jun 2020 18:53

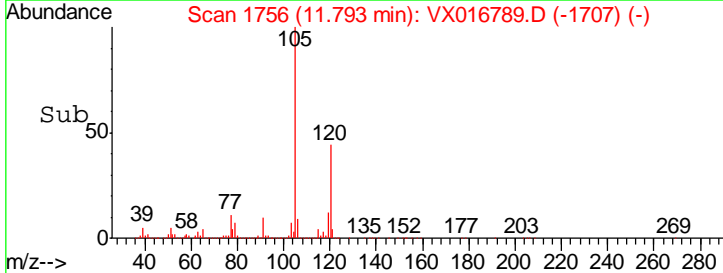
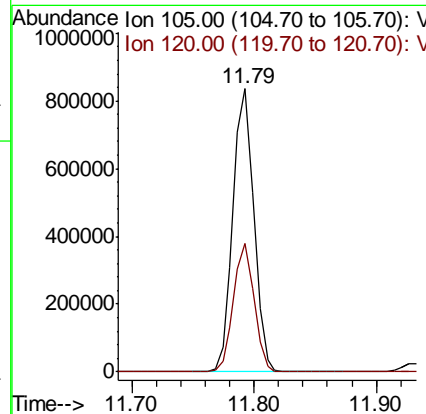
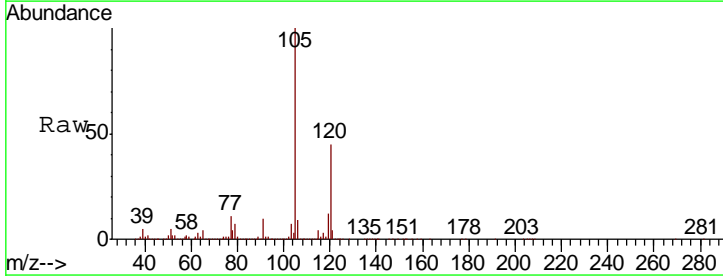
Instrument :
 MSVOA_X
 ClientSampled :
 93-94-COMP

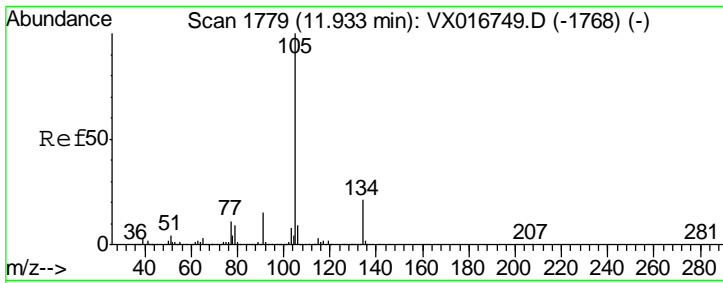
Tgt Ion	Resp	Lower	Upper
119	120902		
91	81.7	29.3	88.0
134	0.0	11.8	35.3#



#84
 1,2,4-Trimethylbenzene
 Concen: 86.175 ug/l
 RT: 11.79 min Scan# 1756
 Delta R.T. -0.00 min
 Lab File: VX016789.D
 Acq: 16 Jun 2020 18:53

Tgt Ion	Resp	Lower	Upper
105	982594		
120	44.8	22.6	67.8

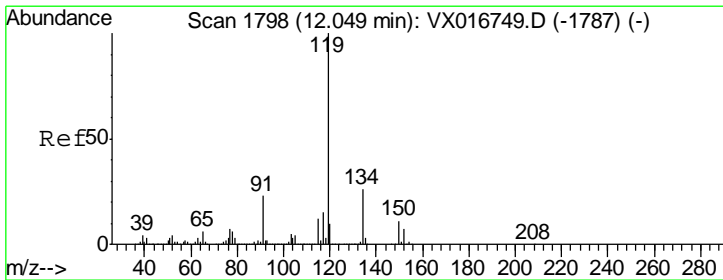
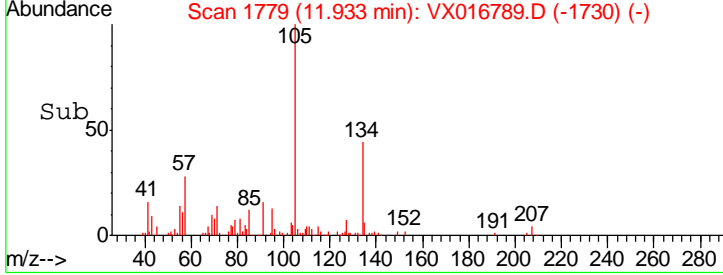
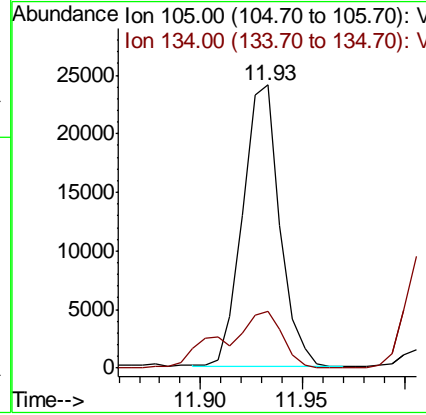
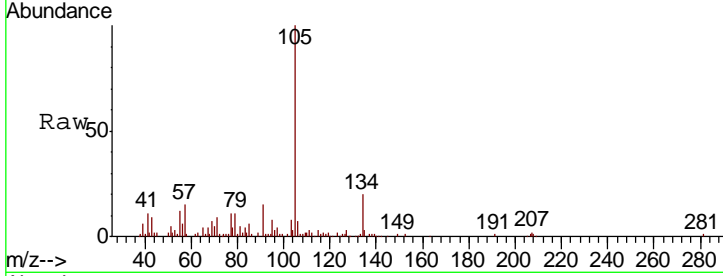




#85
 sec-Butylbenzene
 Concen: 2.503 ug/l
 RT: 11.93 min Scan# 1779
 Delta R.T. -0.00 min
 Lab File: VX016789.D
 Acq: 16 Jun 2020 18:53

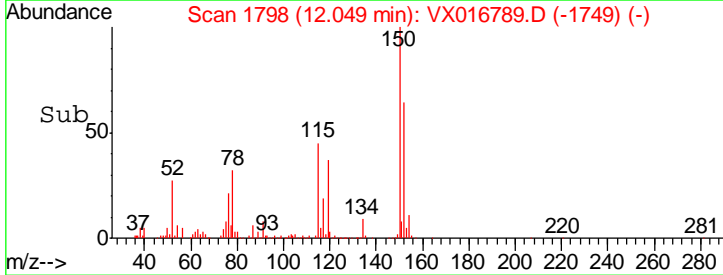
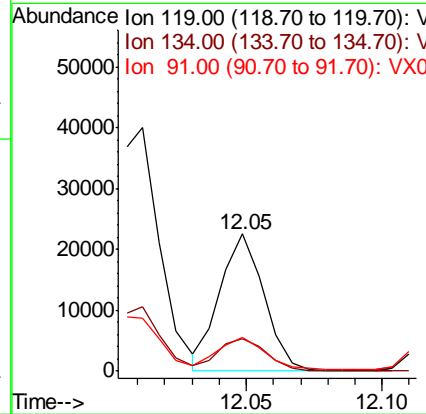
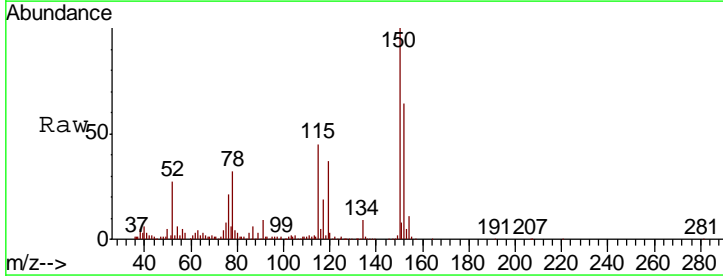
Instrument : MSVOA_X
 ClientSampled : 93-94-COMP

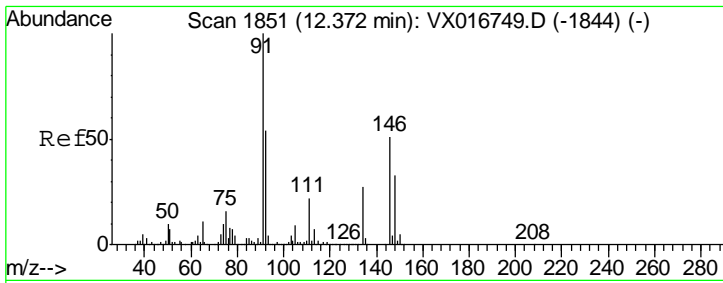
Tgt Ion	Resp	Lower	Upper
105	30202		
134	32.2	10.3	30.8#



#86
 p-Isopropyltoluene
 Concen: 2.165 ug/l
 RT: 12.05 min Scan# 1798
 Delta R.T. -0.00 min
 Lab File: VX016789.D
 Acq: 16 Jun 2020 18:53

Tgt Ion	Resp	Lower	Upper
119	25059		
134	26.1	13.0	38.9
91	25.0	11.6	34.7

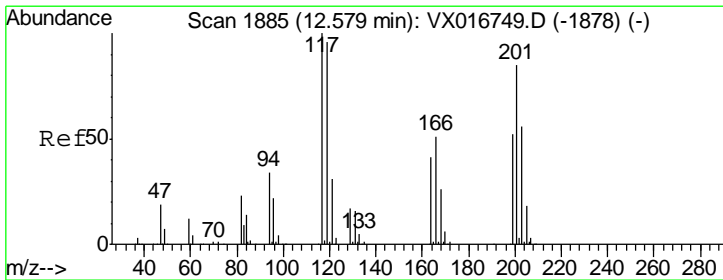
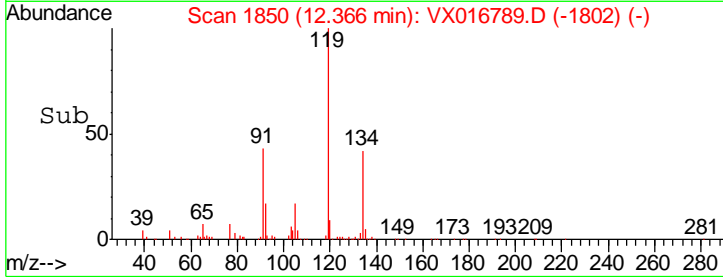
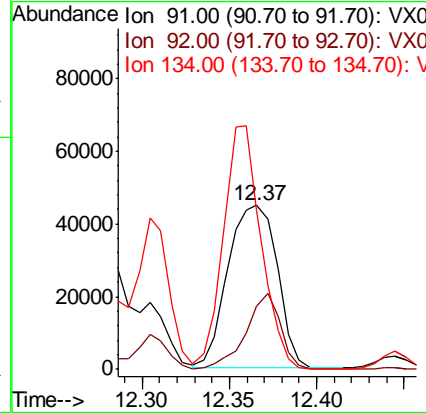
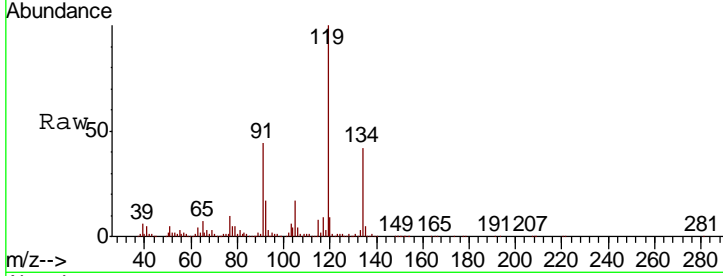




#89
 n-Butylbenzene
 Concen: 9.184 ug/l
 RT: 12.37 min Scan# 1850
 Delta R.T. -0.01 min
 Lab File: VX016789.D
 Acq: 16 Jun 2020 18:53

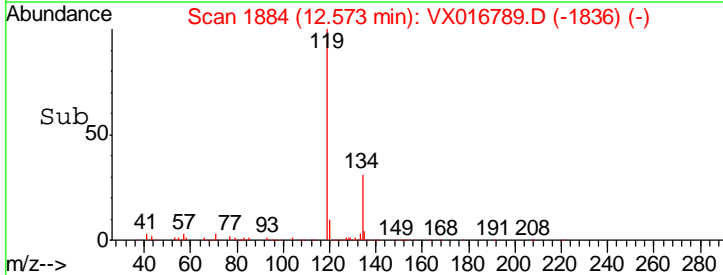
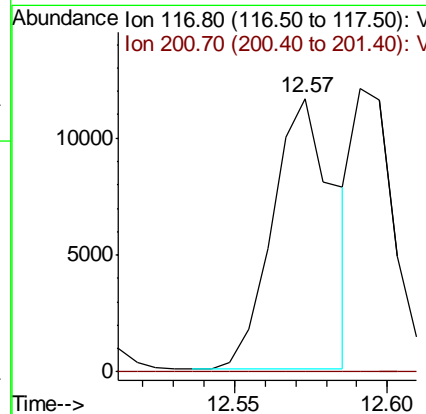
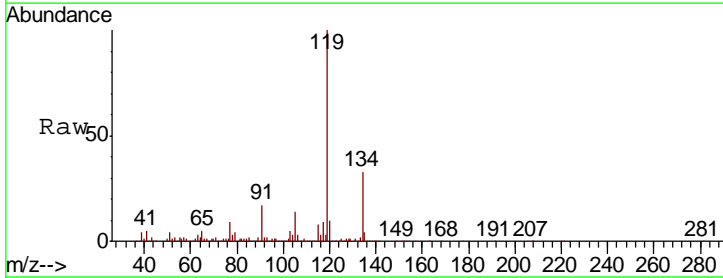
Instrument :
 MSVOA_X
 ClientSampled :
 93-94-COMP

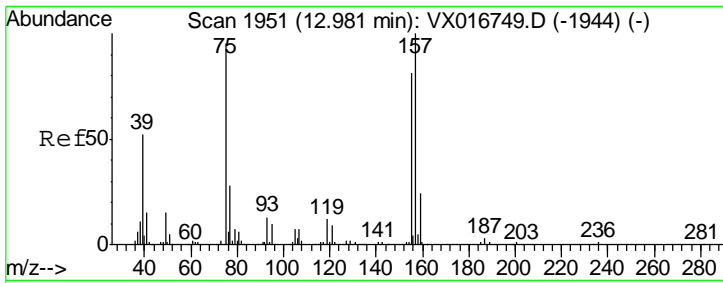
Tgt Ion	Resp	Lower	Upper
91	100		
92	32.4	27.0	80.8
134	114.7	13.7	41.0#



#90
 Hexachloroethane
 Concen: 7.641 ug/l
 RT: 12.57 min Scan# 1884
 Delta R.T. -0.01 min
 Lab File: VX016789.D
 Acq: 16 Jun 2020 18:53

Tgt Ion	Resp	Lower	Upper
117	100		
201	0.0	45.6	136.9#

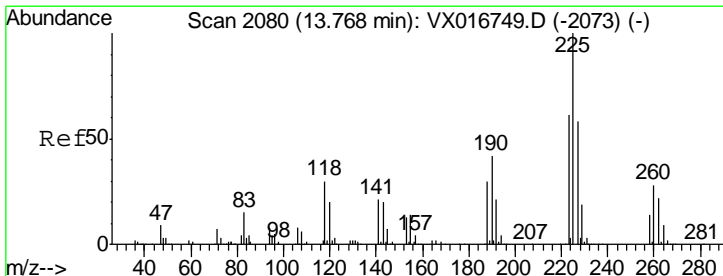
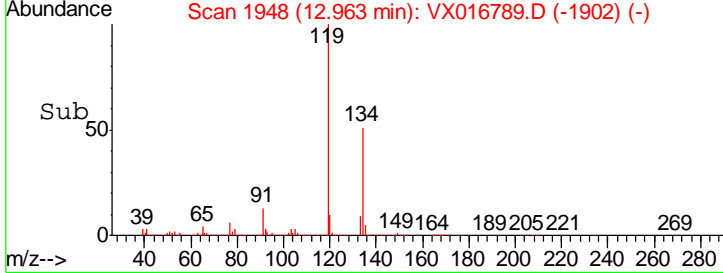
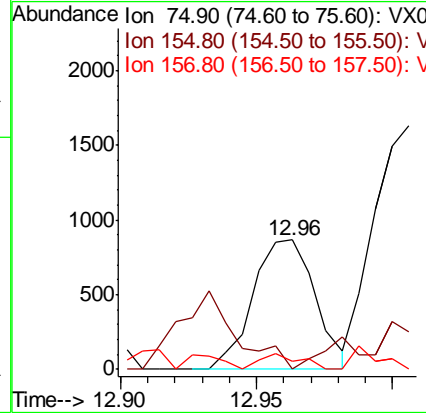
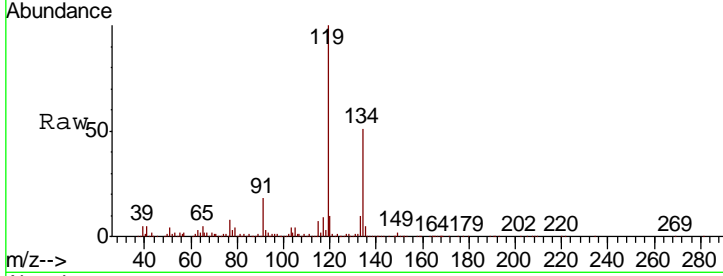




#92
 1,2-Dibromo-3-Chloropropane
 Concen: 1.242 ug/l
 RT: 12.96 min Scan# 1948
 Delta R.T. -0.02 min
 Lab File: VX016789.D
 Acq: 16 Jun 2020 18:53

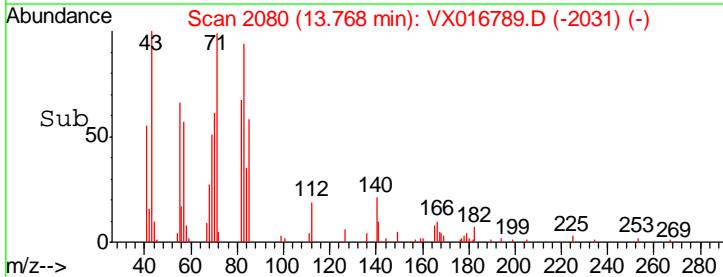
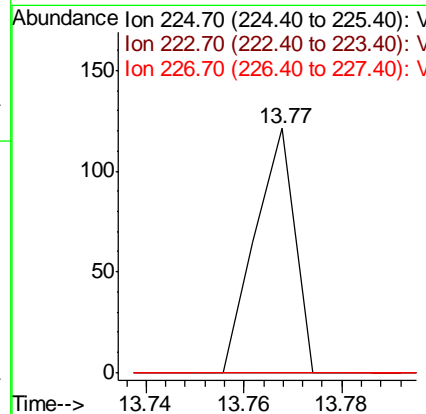
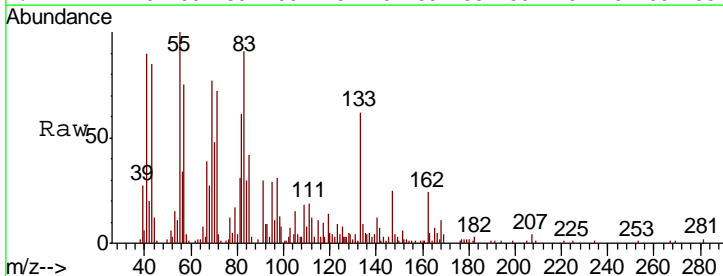
Instrument : MSVOA_X
 ClientSampled : 93-94-COMP

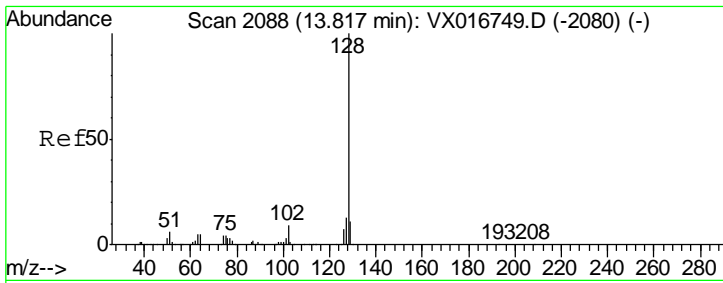
Tgt Ion	Resp	Lower	Upper
75	100		
155	0.0	46.9	140.7#
157	7.7	59.6	178.7#



#94
 Hexachlorobutadiene
 Concen: 0.448 ug/l
 RT: 13.77 min Scan# 2080
 Delta R.T. 0.00 min
 Lab File: VX016789.D
 Acq: 16 Jun 2020 18:53

Tgt Ion	Resp	Lower	Upper
225	100		
223	0.0	31.1	93.5#
227	0.0	30.9	92.7#





#95
 Naphthalene
 Concen: 55.120 ug/l
 RT: 13.82 min Scan# 2088
 Delta R.T. -0.00 min
 Lab File: VX016789.D
 Acq: 16 Jun 2020 18:53

Instrument : MSVOA_X
 ClientSampled : 93-94-COMP

Tot Ion	Ion	Ratio	Lower	Upper
776192	128	100		
	127	12.7	10.2	15.4
	129	11.4	8.8	13.2

