

Data Path : Z:\voasrv\HPCHEM1\MSVOA_X\Data\VX061621\
 Data File : VX022721.D
 Acq On : 16 Jun 2021 15:04
 Operator : JC/MD
 Sample : M2678-15
 Misc : 5.0mL/MSVOA_X/WATER
 ALS Vial : 12 Sample Multiplier: 1

Instrument :
 MSVOA_X
 ClientSampleId :
 SPLP-AMND-COMPOSITE-HRE

Quant Time: Jun 17 02:22:17 2021
 Quant Method : Z:\voasrv\HPCHEM1\MSVOA_X\Method\82X061021W.M
 Quant Title : SW846 8260
 QLast Update : Thu Jun 10 12:20:00 2021
 Response via : Initial Calibration

Compound	R.T.	QIon	Response	Conc	Units	Dev(Min)

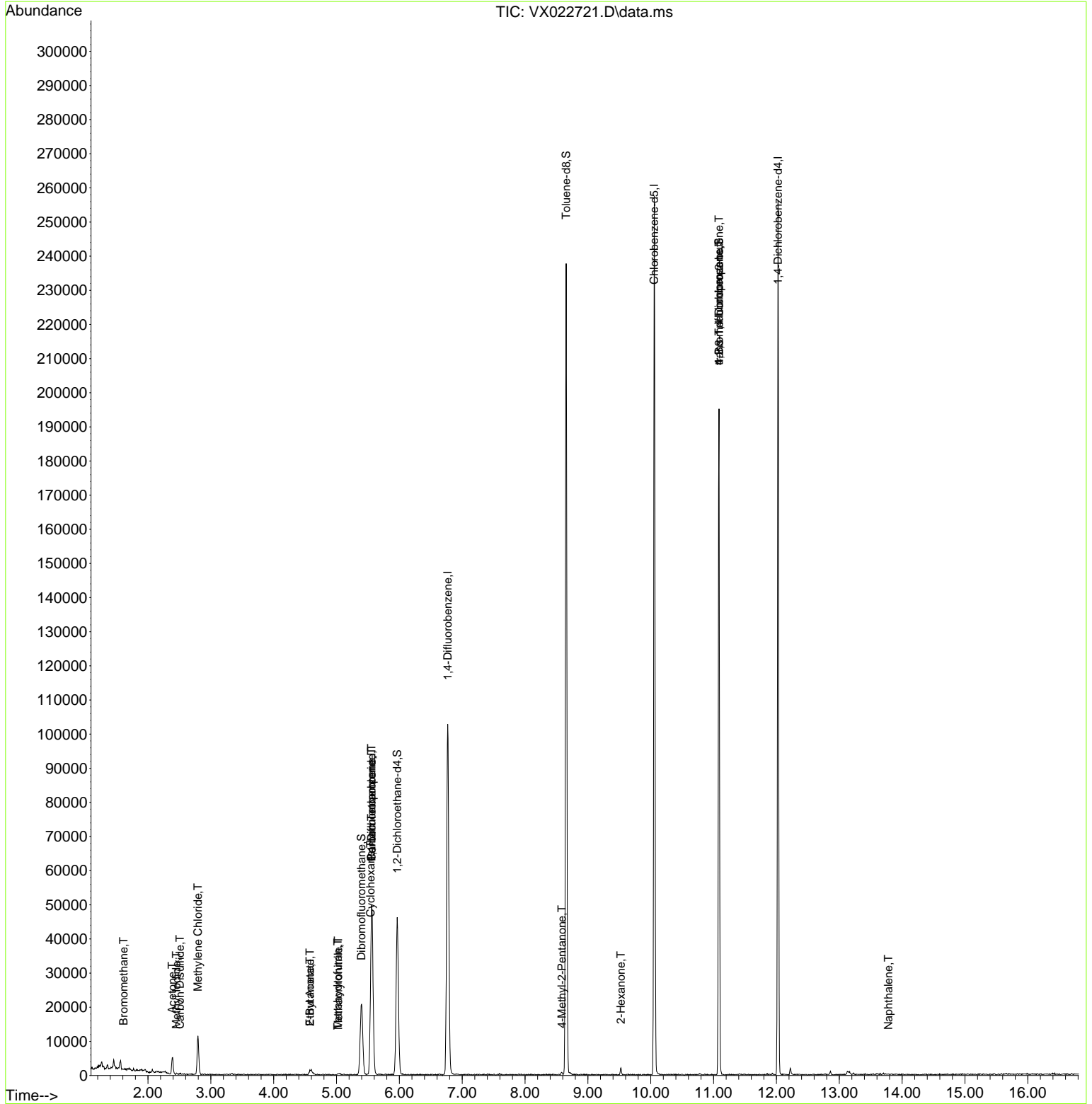
Internal Standards						
1) Pentafluorobenzene	5.556	168	42032	50.00	ug/l	# 0.00
34) 1,4-Difluorobenzene	6.769	114	100033	50.00	ug/l	0.00
63) Chlorobenzene-d5	10.055	117	104635	50.00	ug/l	0.00
72) 1,4-Dichlorobenzene-d4	12.024	152	43138	50.00	ug/l	0.00
System Monitoring Compounds						
33) 1,2-Dichloroethane-d4	5.964	65	41018	54.26	ug/l	0.00
Spiked Amount	50.000	Range	78 - 117	Recovery	=	108.52%
35) Dibromofluoromethane	5.397	113	18057	28.29	ug/l	0.00
Spiked Amount	50.000	Range	75 - 124	Recovery	=	56.58%#
50) Toluene-d8	8.653	98	133360	53.01	ug/l	0.00
Spiked Amount	50.000	Range	92 - 112	Recovery	=	106.02%
62) 4-Bromofluorobenzene	11.085	95	52454	55.13	ug/l	0.00
Spiked Amount	50.000	Range	83 - 123	Recovery	=	110.26%
Target Compounds						
						Qvalue
5) Bromomethane	1.612	94	145	0.46	ug/l	# 55
10) Methyl Iodide	2.453	142	151	0.26	ug/l	# 91
16) Acetone	2.386	43	5403	15.96	ug/l	92
17) Carbon Disulfide	2.508	76	264	0.23	ug/l	# 75
20) Methylene Chloride	2.794	84	5136	7.62	ug/l	91
25) 2-Butanone	4.574	43	969	1.77	ug/l	# 76
29) Tetrahydrofuran	5.019	42	184	0.58	ug/l	# 27
31) Cyclohexane	5.544	56	517	0.57	ug/l	# 33
36) 1,1-Dichloropropene	5.556	75	4085	4.10	ug/l	# 47
37) Ethyl Acetate	4.574	43	969	0.76	ug/l	# 64
38) Carbon Tetrachloride	5.556	117	5120	6.01	ug/l	# 21
41) Methacrylonitrile	5.026	41	165	0.24	ug/l	# 30
51) 4-Methyl-2-Pentanone	8.586	43	524	0.41	ug/l	# 72
59) 2-Hexanone	9.525	43	275	0.28	ug/l	# 19
76) 1,2,3-Trichloropropane	11.085	75	29442	25.74	ug/l	# 38
81) trans-1,4-Dichloro-2-b...	11.085	75	29442	64.64	ug/l	# 12
95) Naphthalene	13.780	128	81	1.50	ug/l	# 69

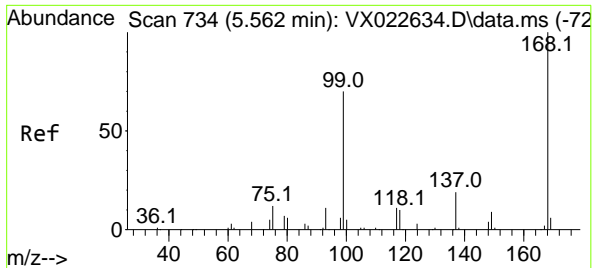
(#) = qualifier out of range (m) = manual integration (+) = signals summed

Data Path : Z:\voasrv\HPCHEM1\MSVOA_X\Data\VX061621\
 Data File : VX022721.D
 Acq On : 16 Jun 2021 15:04
 Operator : JC/MD
 Sample : M2678-15
 Misc : 5.0mL/MSVOA_X/WATER
 ALS Vial : 12 Sample Multiplier: 1

Instrument :
 MSVOA_X
 ClientSampleId :
 SPLP-AMND-COMPOSITE-HRE

Quant Time: Jun 17 02:22:17 2021
 Quant Method : Z:\voasrv\HPCHEM1\MSVOA_X\Method\82X061021W.M
 Quant Title : SW846 8260
 QLast Update : Thu Jun 10 12:20:00 2021
 Response via : Initial Calibration

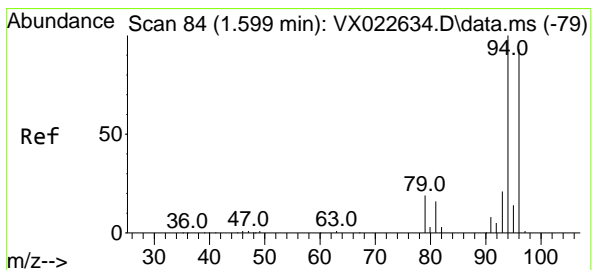
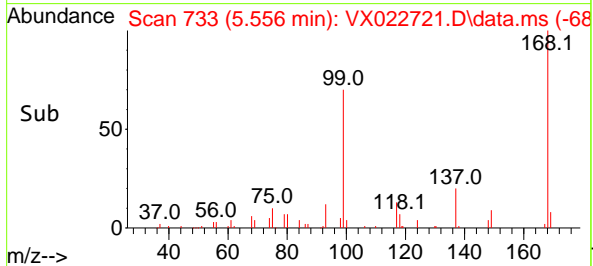
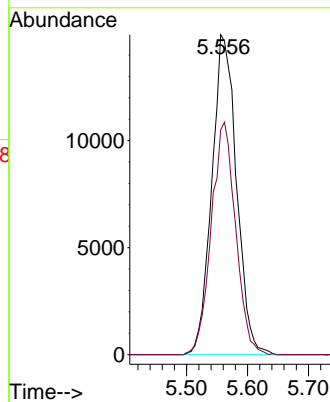
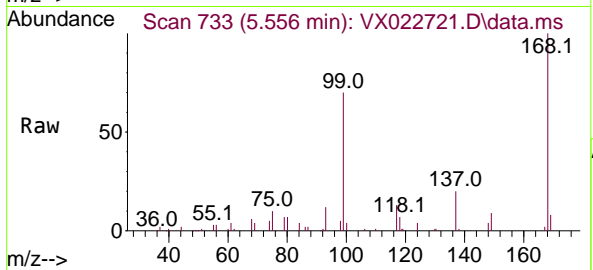




#1
 Pentafluorobenzene
 Concen: 50.00 ug/l
 RT: 5.556 min Scan# 733
 Delta R.T. -0.006 min
 Lab File: VX022721.D
 Acq: 16 Jun 2021 15:04

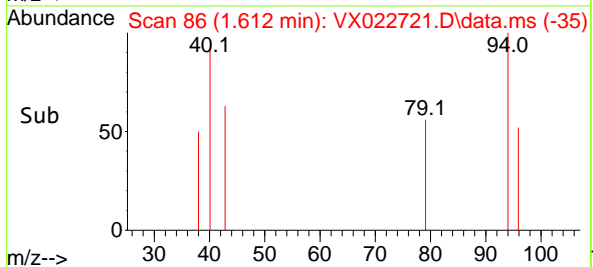
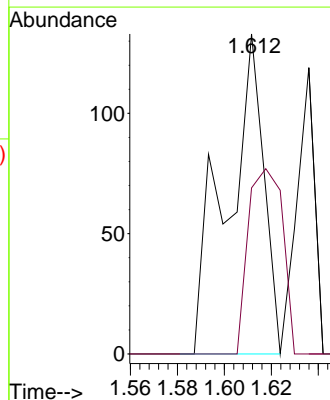
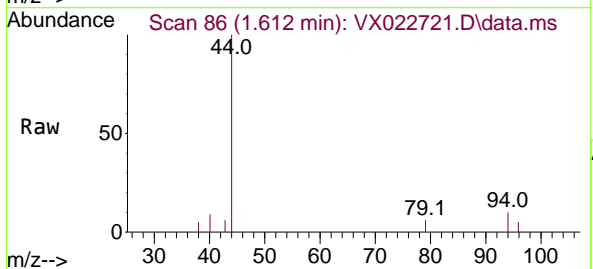
Instrument :
 MSVOA_X
 ClientSampleId :
 SPLP-AMND-COMPOSITE-HRE

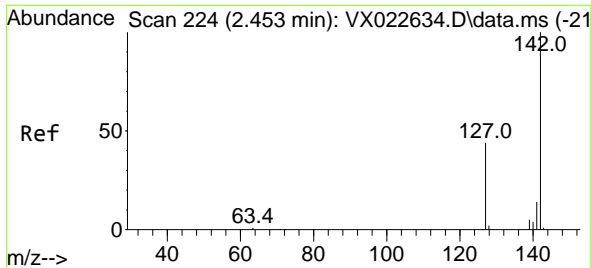
Tgt Ion:168 Resp: 42032
 Ion Ratio Lower Upper
 168 100
 99 70.2 45.8 68.6#



#5
 Bromomethane
 Concen: 0.46 ug/l
 RT: 1.612 min Scan# 86
 Delta R.T. 0.013 min
 Lab File: VX022721.D
 Acq: 16 Jun 2021 15:04

Tgt Ion: 94 Resp: 145
 Ion Ratio Lower Upper
 94 100
 96 51.9 76.4 114.6#

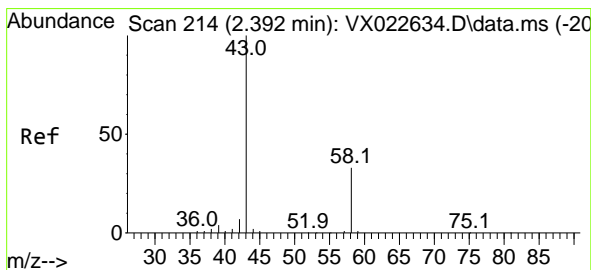
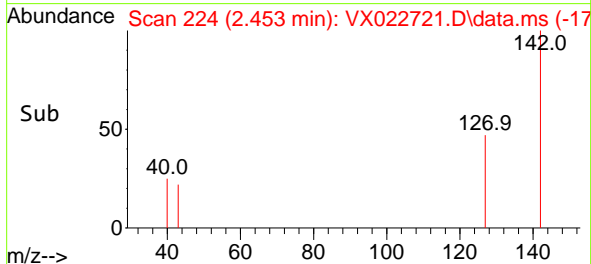
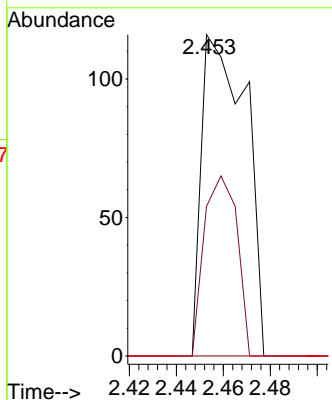
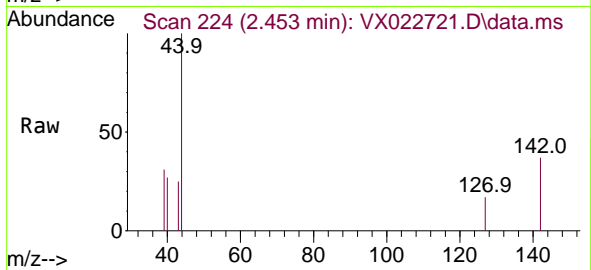




#10
Methyl Iodide
Concen: 0.26 ug/l
RT: 2.453 min Scan# 224
Delta R.T. -0.000 min
Lab File: VX022721.D
Acq: 16 Jun 2021 15:04

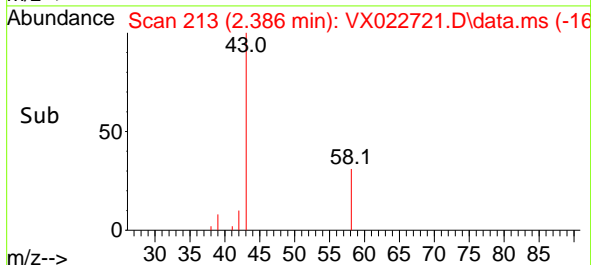
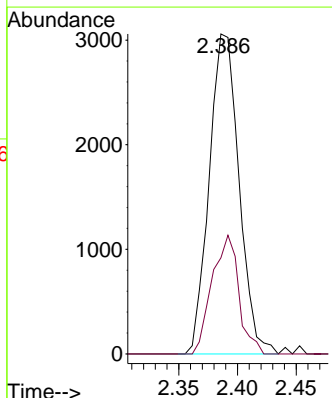
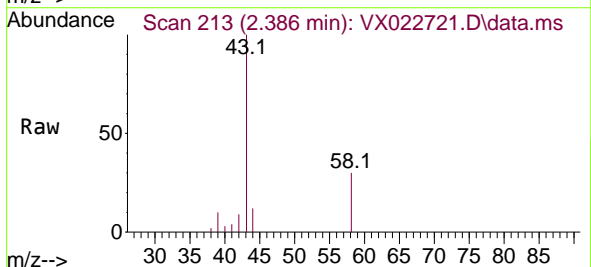
Instrument : MSVOA_X
Client Sampled : SPLP-AMND-COMPOSITE-HRE

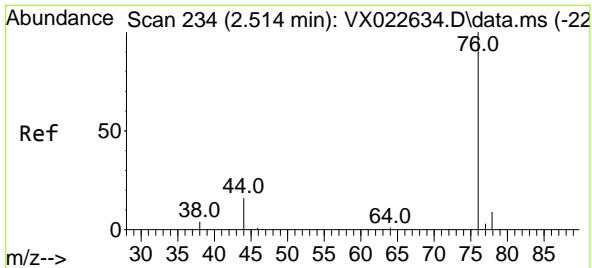
Tgt Ion	Resp	Lower	Upper
142	100		
127	41.7	33.3	49.9
141	0.0	11.4	17.0#



#16
Acetone
Concen: 15.96 ug/l
RT: 2.386 min Scan# 213
Delta R.T. -0.006 min
Lab File: VX022721.D
Acq: 16 Jun 2021 15:04

Tgt Ion	Resp	Lower	Upper
43	100		
58	30.0	27.8	41.8

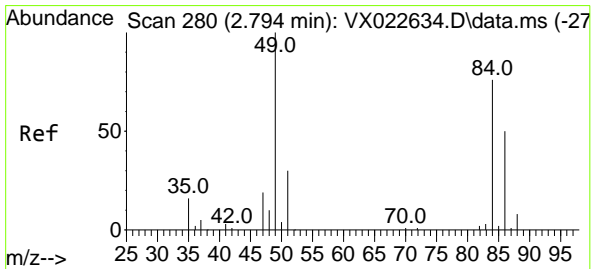
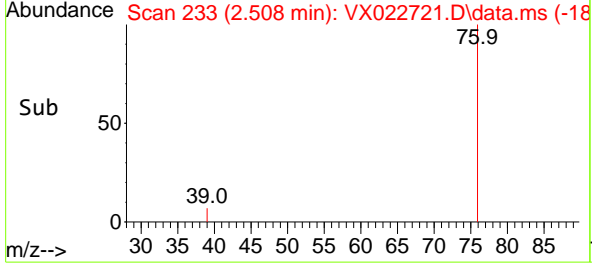
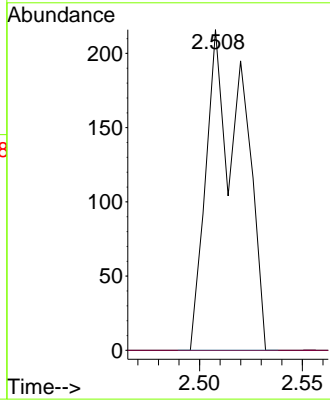
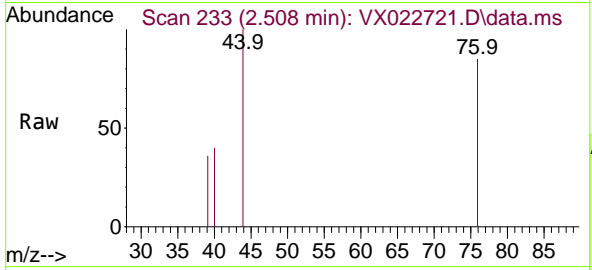




#17
 Carbon Disulfide
 Concen: 0.23 ug/l
 RT: 2.508 min Scan# 233
 Delta R.T. -0.006 min
 Lab File: VX022721.D
 Acq: 16 Jun 2021 15:04

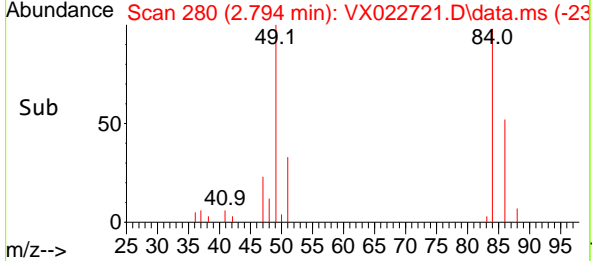
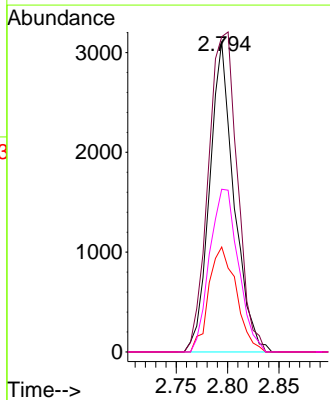
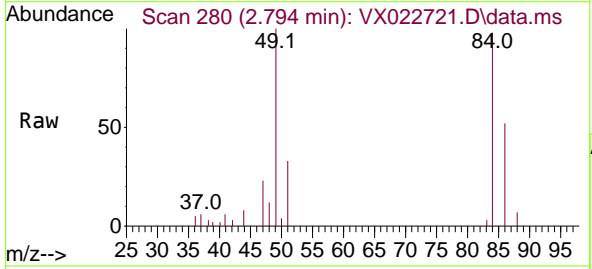
Instrument :
 MSVOA_X
ClientSampled :
 SPLP-AMND-COMPOSITE-HRE

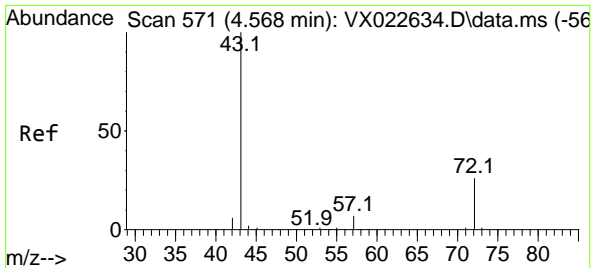
Tgt Ion	Resp	Lower	Upper
76	100		
78	0.0	7.2	10.8#



#20
 Methylene Chloride
 Concen: 7.62 ug/l
 RT: 2.794 min Scan# 280
 Delta R.T. 0.000 min
 Lab File: VX022721.D
 Acq: 16 Jun 2021 15:04

Tgt Ion	Resp	Lower	Upper
84	100		
49	101.6	88.6	132.8
51	33.8	27.0	40.6
86	52.4	50.3	75.5

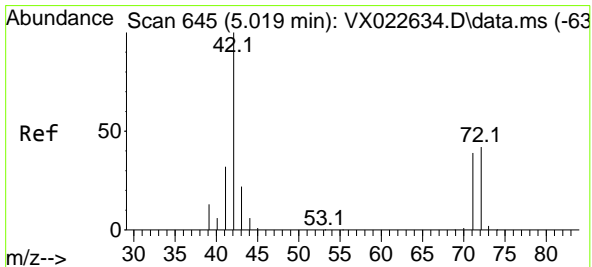
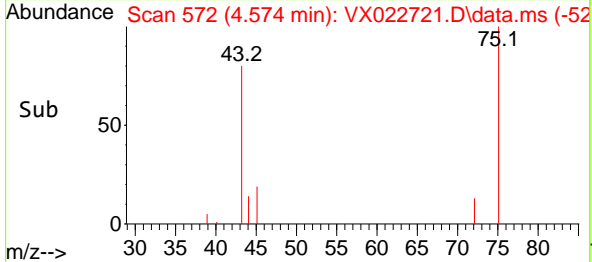
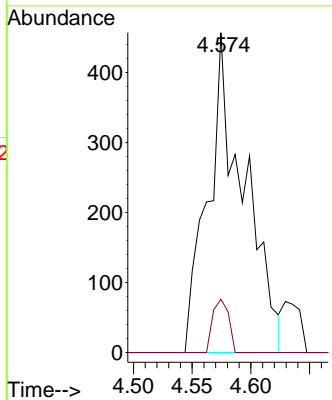
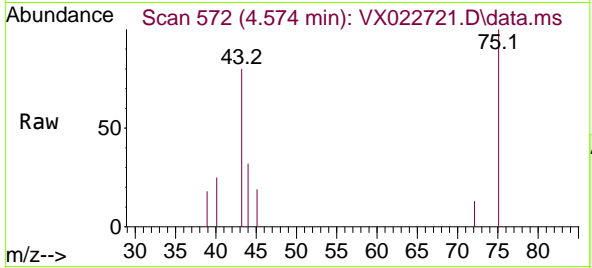




#25
 2-Butanone
 Concen: 1.77 ug/l
 RT: 4.574 min Scan# 572
 Delta R.T. 0.006 min
 Lab File: VX022721.D
 Acq: 16 Jun 2021 15:04

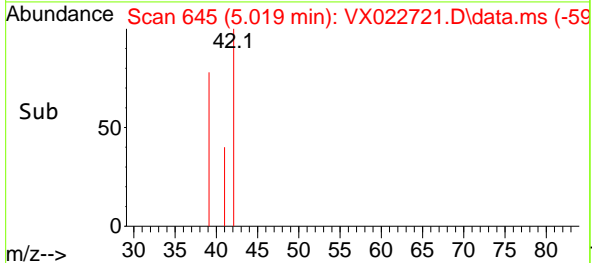
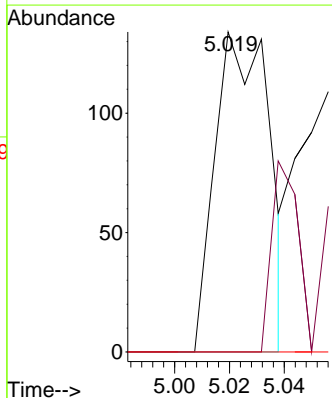
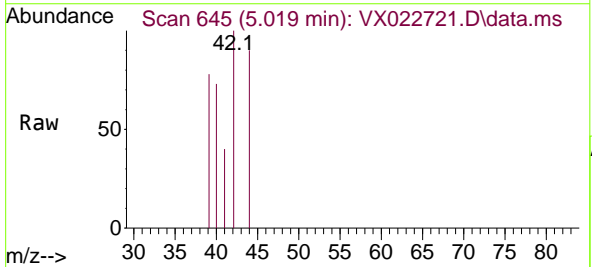
Instrument :
 MSVOA_X
ClientSampled :
 SPLP-AMND-COMPOSITE-HRE

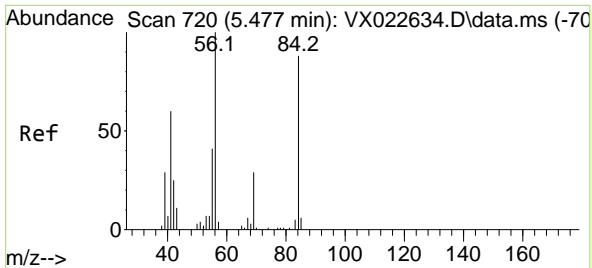
Tgt Ion	Resp	Lower	Upper
43	100		
72	16.6	23.7	35.5#



#29
 Tetrahydrofuran
 Concen: 0.58 ug/l
 RT: 5.019 min Scan# 645
 Delta R.T. 0.006 min
 Lab File: VX022721.D
 Acq: 16 Jun 2021 15:04

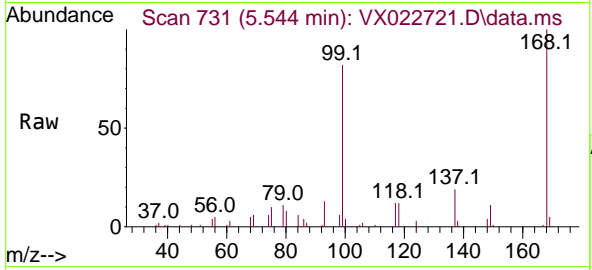
Tgt Ion	Resp	Lower	Upper
42	100		
72	0.0	41.7	62.5#
71	0.0	38.4	57.6#



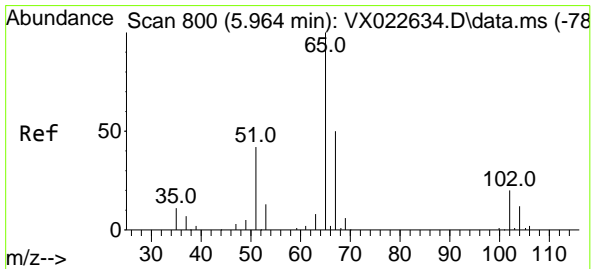
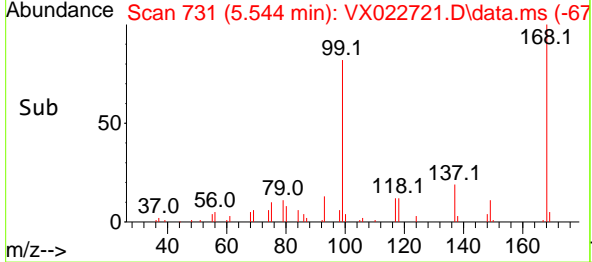
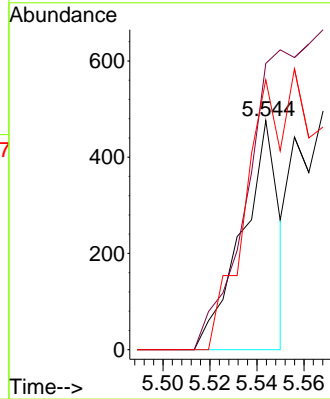


#31
 Cyclohexane
 Concen: 0.57 ug/l
 RT: 5.544 min Scan# 731
 Delta R.T. 0.067 min
 Lab File: VX022721.D
 Acq: 16 Jun 2021 15:04

Instrument :
 MSVOA_X
ClientSampled :
 SPLP-AMND-COMPOSITE-HRE

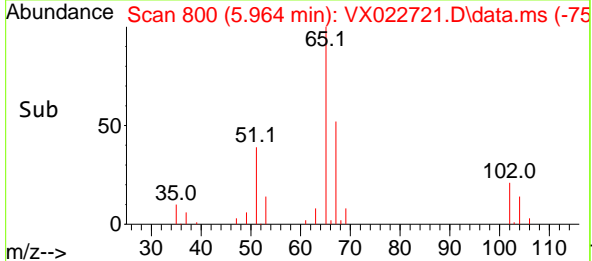
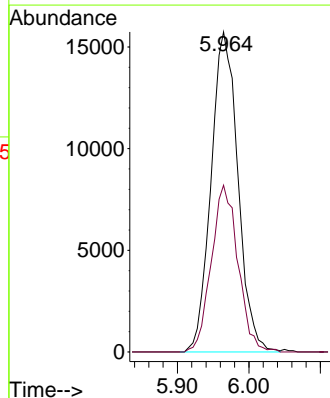
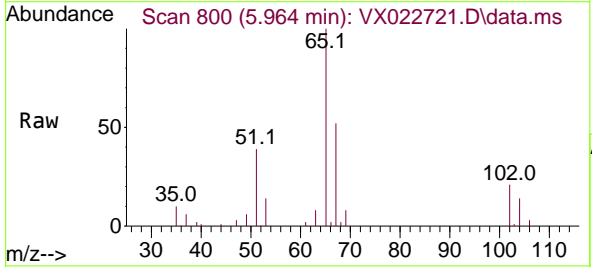


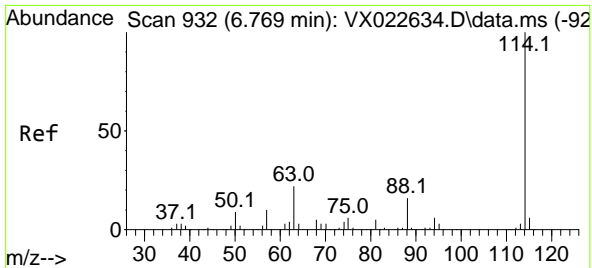
Tgt Ion: 56 Resp: 517
 Ion Ratio Lower Upper
 56 100
 69 125.0 25.3 37.9#
 84 117.9 71.4 107.0#



#33
 1,2-Dichloroethane-d4
 Concen: 54.26 ug/l
 RT: 5.964 min Scan# 800
 Delta R.T. 0.000 min
 Lab File: VX022721.D
 Acq: 16 Jun 2021 15:04

Tgt Ion: 65 Resp: 41018
 Ion Ratio Lower Upper
 65 100
 67 51.8 0.0 105.4

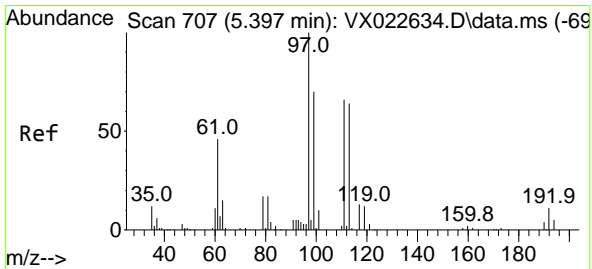
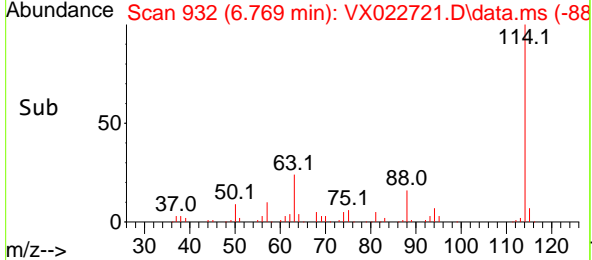
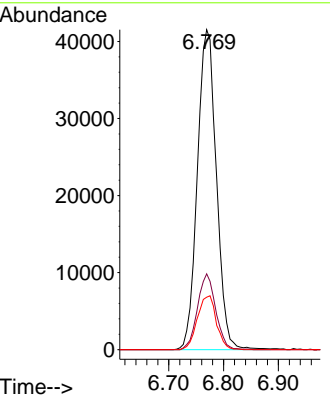
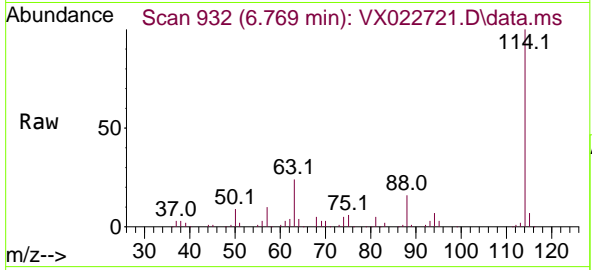




#34
 1,4-Difluorobenzene
 Concen: 50.00 ug/l
 RT: 6.769 min Scan# 932
 Delta R.T. 0.000 min
 Lab File: VX022721.D
 Acq: 16 Jun 2021 15:04

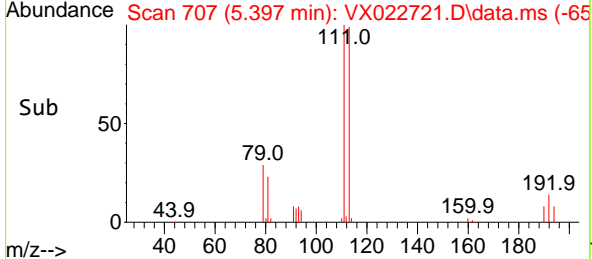
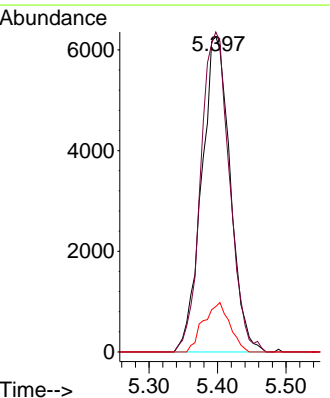
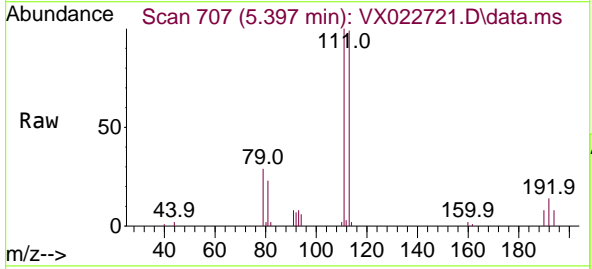
Instrument :
 MSVOA_X
 ClientSampleId :
 SPLP-AMND-COMPOSITE-HRE

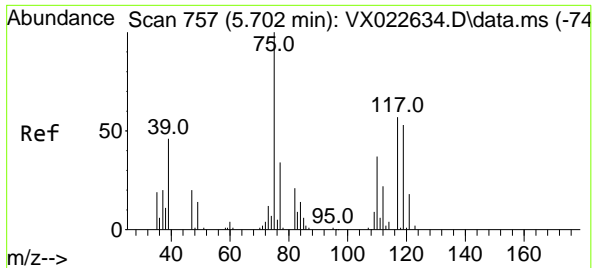
Tgt Ion	Resp	Lower	Upper
114	100		
63	23.7	0.0	40.8
88	16.4	0.0	32.8



#35
 Dibromofluoromethane
 Concen: 28.29 ug/l
 RT: 5.397 min Scan# 707
 Delta R.T. 0.006 min
 Lab File: VX022721.D
 Acq: 16 Jun 2021 15:04

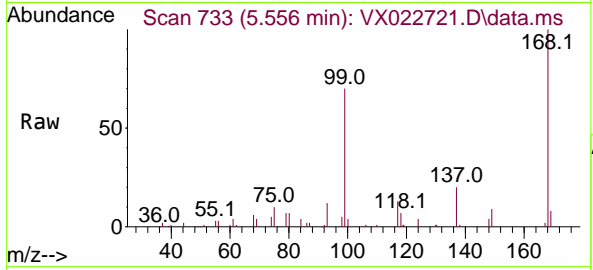
Tgt Ion	Resp	Lower	Upper
113	100		
111	102.2	81.9	122.9
192	14.5	16.7	25.1#





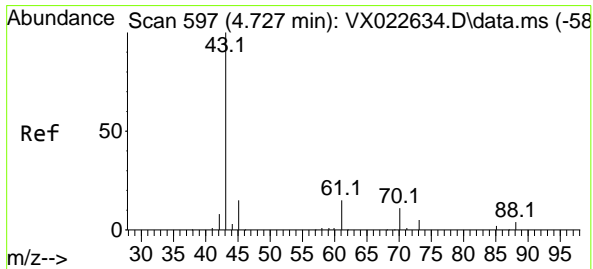
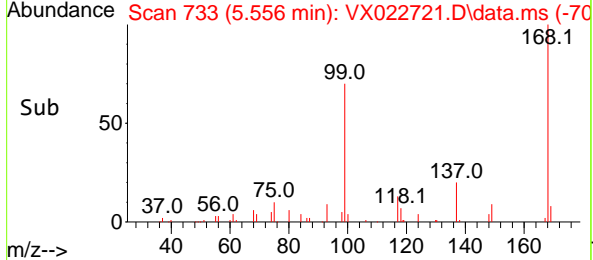
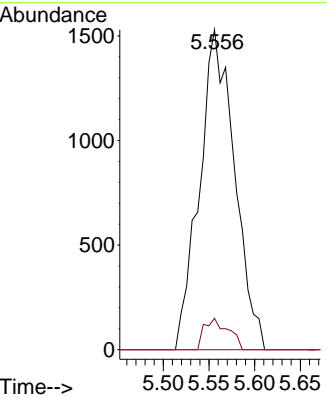
#36
 1,1-Dichloropropene
 Concen: 4.10 ug/l
 RT: 5.556 min Scan# 733
 Delta R.T. -0.146 min
 Lab File: VX022721.D
 Acq: 16 Jun 2021 15:04

Instrument : MSVOA_X
 ClientSampled : SPLP-AMND-COMPOSITE-HRE

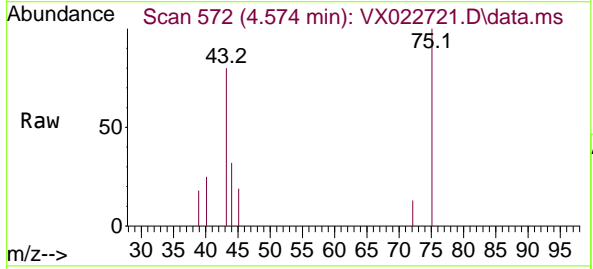


Tgt Ion: 75 Resp: 4085

Ion	Ratio	Lower	Upper
75	100		
110	6.7	18.1	54.4#
77	0.0	25.3	37.9#

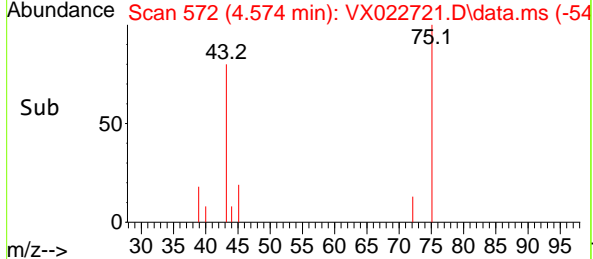
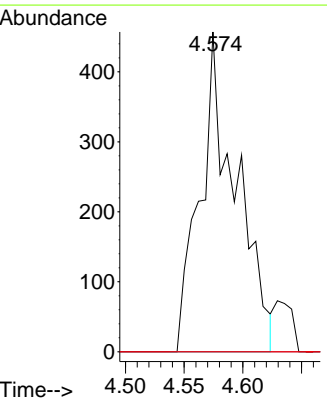


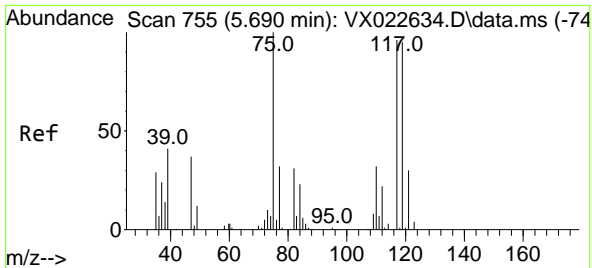
#37
 Ethyl Acetate
 Concen: 0.76 ug/l
 RT: 4.574 min Scan# 572
 Delta R.T. -0.153 min
 Lab File: VX022721.D
 Acq: 16 Jun 2021 15:04



Tgt Ion: 43 Resp: 969

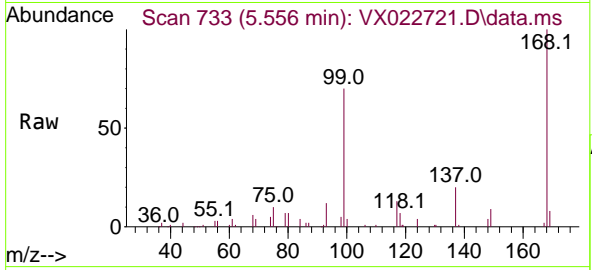
Ion	Ratio	Lower	Upper
43	100		
61	0.0	12.8	19.2#
70	0.0	10.5	15.7#





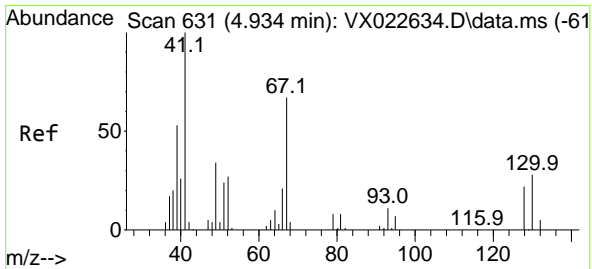
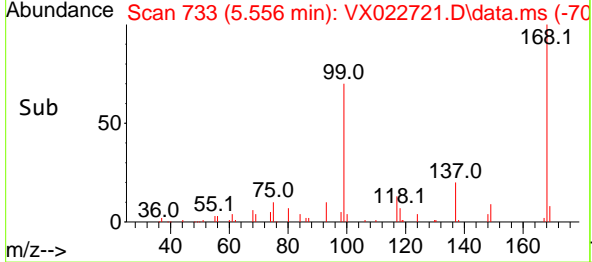
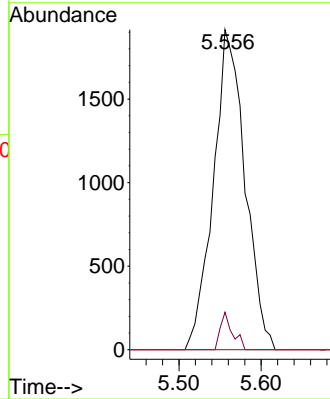
#38
 Carbon Tetrachloride
 Concen: 6.01 ug/l
 RT: 5.556 min Scan# 733
 Delta R.T. -0.122 min
 Lab File: VX022721.D
 Acq: 16 Jun 2021 15:04

Instrument :
 MSVOA_X
 ClientSampled :
 SPLP-AMND-COMPOSITE-HRE

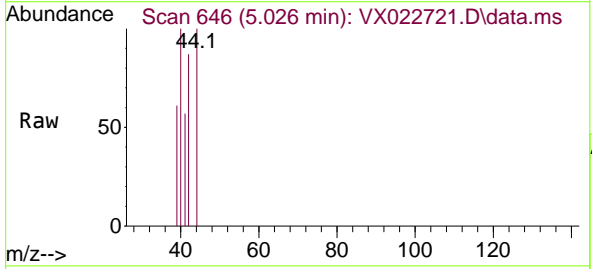


Tgt Ion: 117 Resp: 5120

Ion	Ratio	Lower	Upper
117	100		
119	11.7	76.2	114.2#
121	0.0	24.8	37.2#

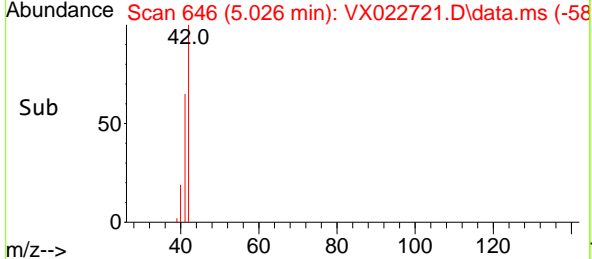
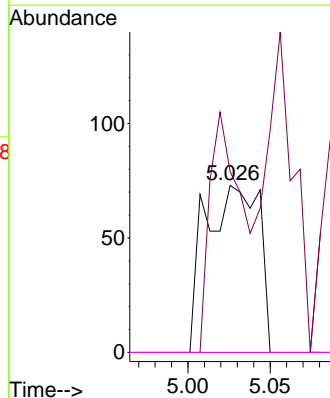


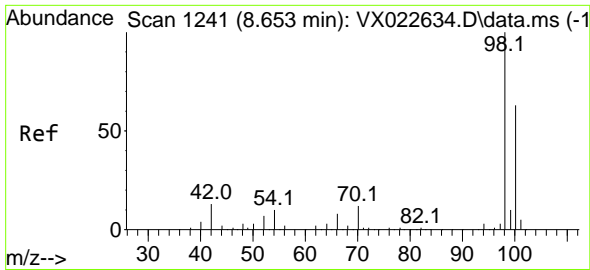
#41
 Methacrylonitrile
 Concen: 0.24 ug/l
 RT: 5.026 min Scan# 646
 Delta R.T. 0.098 min
 Lab File: VX022721.D
 Acq: 16 Jun 2021 15:04



Tgt Ion: 41 Resp: 165

Ion	Ratio	Lower	Upper
41	100		
39	84.2	42.5	63.7#
67	0.0	65.0	97.6#
52	0.0	25.3	37.9#

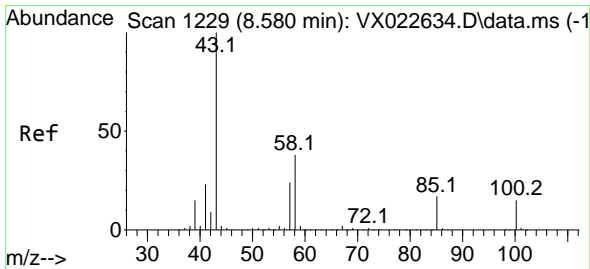
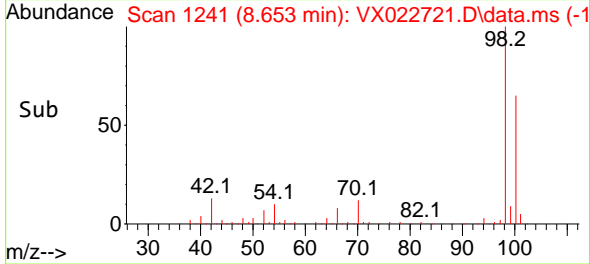
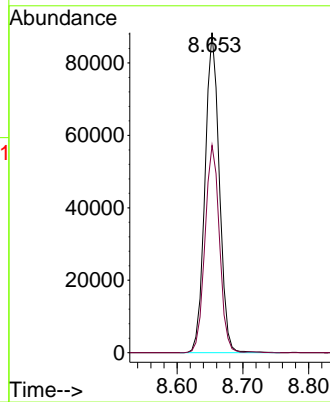
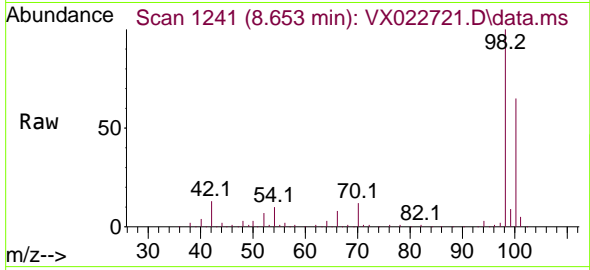




#50
 Toluene-d8
 Concen: 53.01 ug/l
 RT: 8.653 min Scan# 1241
 Delta R.T. -0.000 min
 Lab File: VX022721.D
 Acq: 16 Jun 2021 15:04

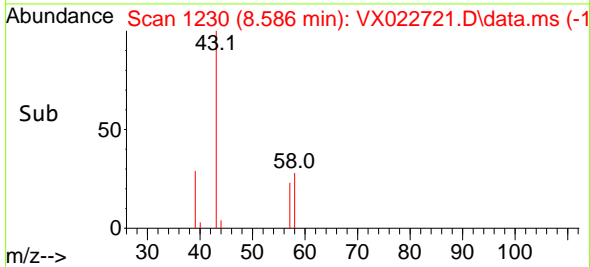
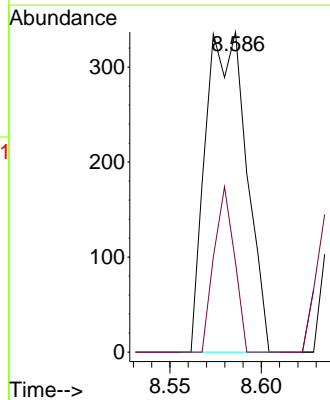
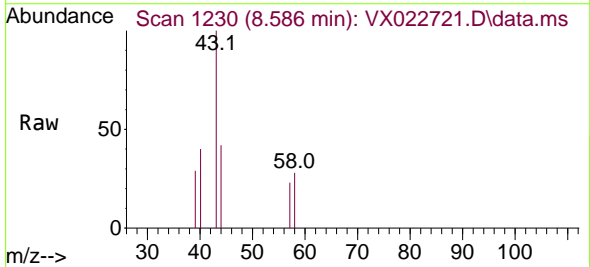
Instrument :
 MSVOA_X
 ClientSampled :
 SPLP-AMND-COMPOSITE-HRE

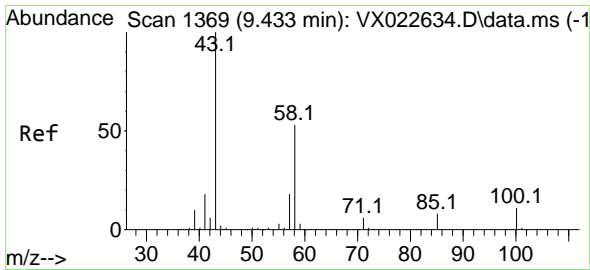
Tgt Ion: 98 Resp: 133360
 Ion Ratio Lower Upper
 98 100
 100 65.5 51.9 77.9



#51
 4-Methyl-2-Pentanone
 Concen: 0.41 ug/l
 RT: 8.586 min Scan# 1230
 Delta R.T. 0.006 min
 Lab File: VX022721.D
 Acq: 16 Jun 2021 15:04

Tgt Ion: 43 Resp: 524
 Ion Ratio Lower Upper
 43 100
 58 25.8 35.4 53.0#

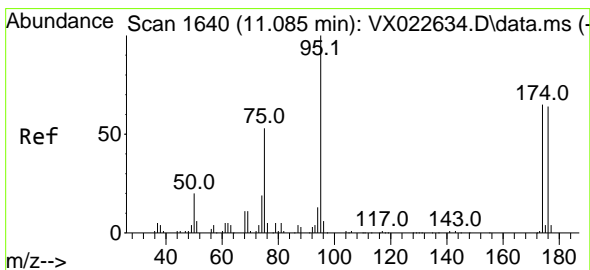
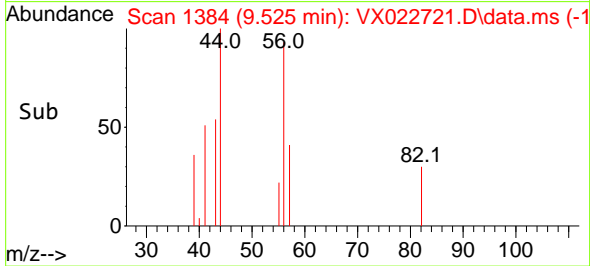
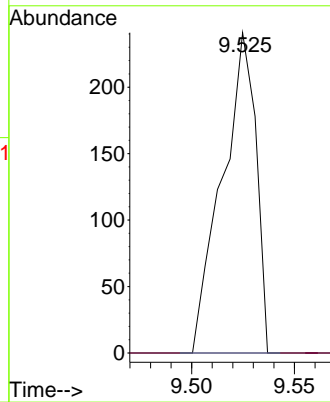
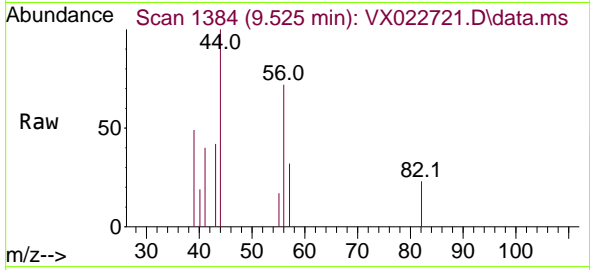




#59
 2-Hexanone
 Concen: 0.28 ug/l
 RT: 9.525 min Scan# 1384
 Delta R.T. 0.092 min
 Lab File: VX022721.D
 Acq: 16 Jun 2021 15:04

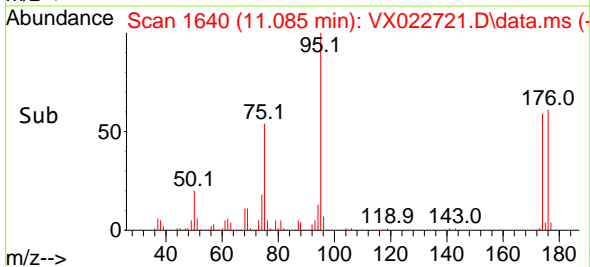
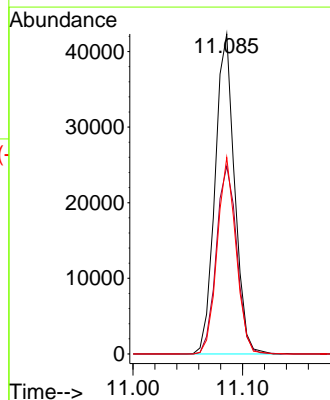
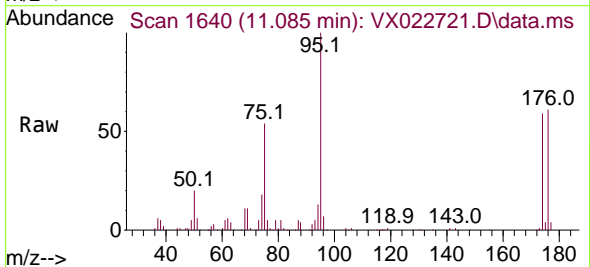
Instrument :
 MSVOA_X
ClientSampled :
 SPLP-AMND-COMPOSITE-HRE

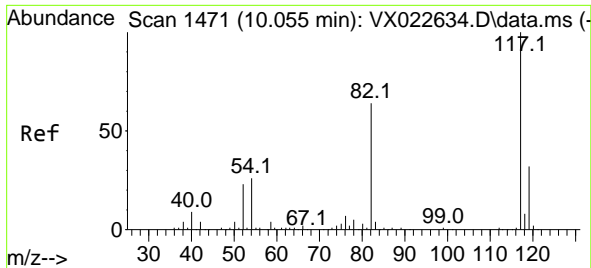
Tgt Ion: 43 Resp: 275
 Ion Ratio Lower Upper
 43 100
 58 0.0 30.9 92.8#



#62
 4-Bromofluorobenzene
 Concen: 55.13 ug/l
 RT: 11.085 min Scan# 1640
 Delta R.T. 0.000 min
 Lab File: VX022721.D
 Acq: 16 Jun 2021 15:04

Tgt Ion: 95 Resp: 52454
 Ion Ratio Lower Upper
 95 100
 174 61.5 0.0 154.6
 176 58.9 0.0 155.8

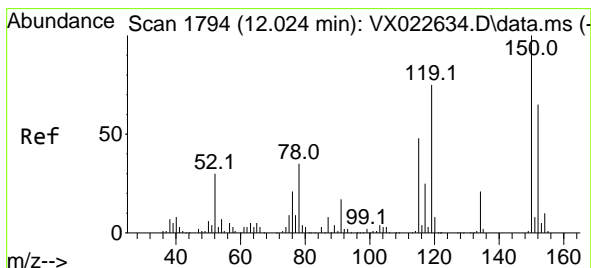
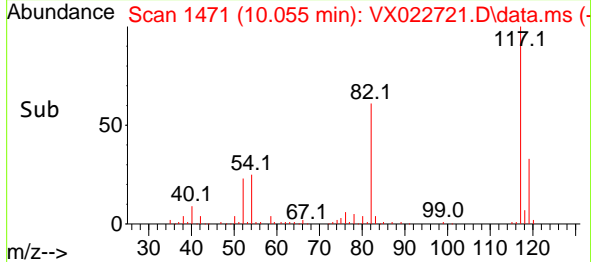
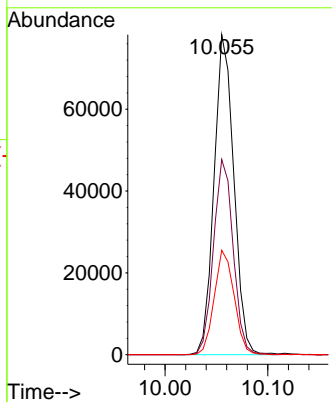
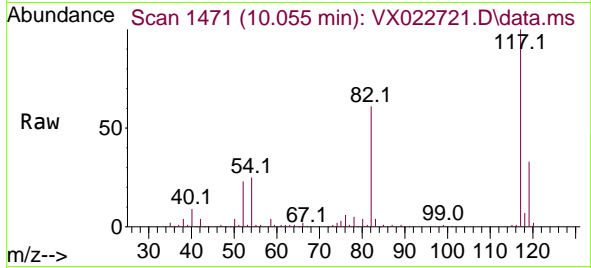




#63
 Chlorobenzene-d5
 Concen: 50.00 ug/l
 RT: 10.055 min Scan# 1471
 Delta R.T. 0.000 min
 Lab File: VX022721.D
 Acq: 16 Jun 2021 15:04

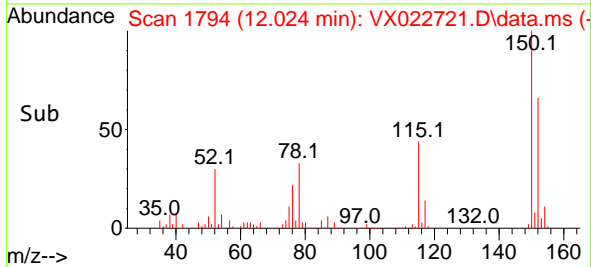
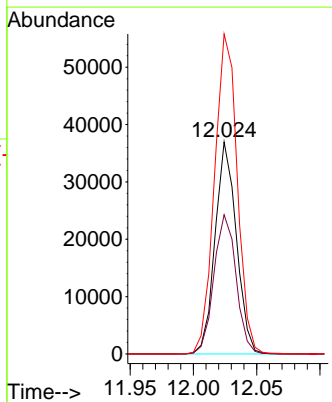
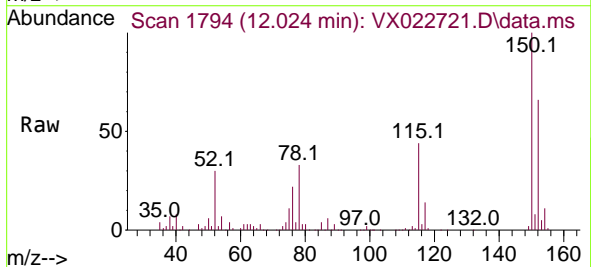
Instrument :
 MSVOA_X
ClientSampled :
 SPLP-AMND-COMPOSITE-HRE

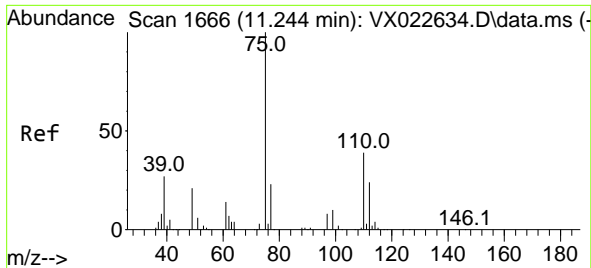
Tgt Ion	Resp	Lower	Upper
117	104635		
117	100		
82	61.0	47.4	71.2
119	32.6	26.6	39.8



#72
 1,4-Dichlorobenzene-d4
 Concen: 50.00 ug/l
 RT: 12.024 min Scan# 1794
 Delta R.T. 0.000 min
 Lab File: VX022721.D
 Acq: 16 Jun 2021 15:04

Tgt Ion	Resp	Lower	Upper
152	43138		
152	100		
115	68.4	41.1	123.3
150	161.5	0.0	349.0

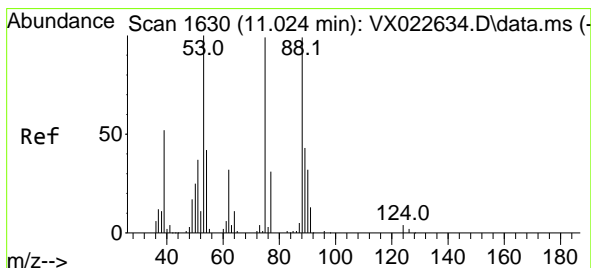
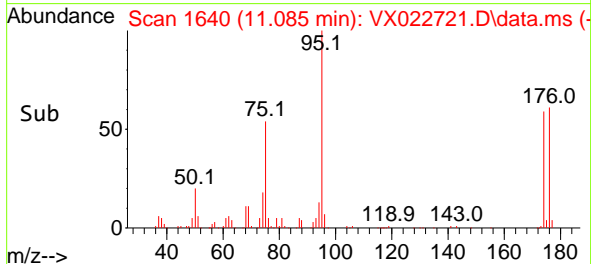
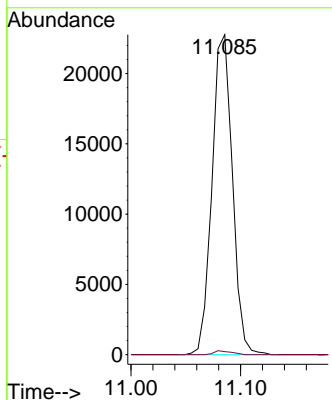
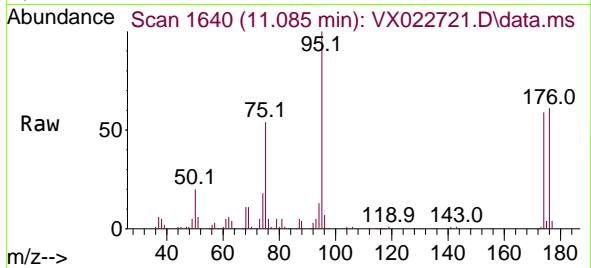




#76
 1,2,3-Trichloropropane
 Concen: 25.74 ug/l
 RT: 11.085 min Scan# 1640
 Delta R.T. -0.159 min
 Lab File: VX022721.D
 Acq: 16 Jun 2021 15:04

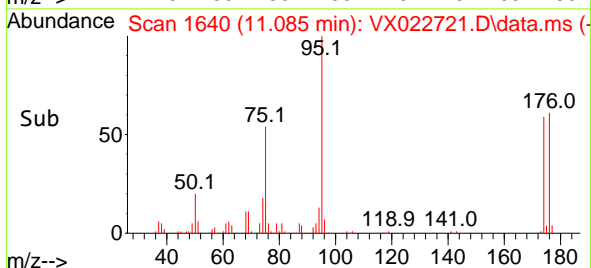
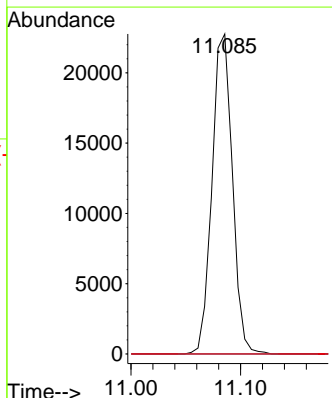
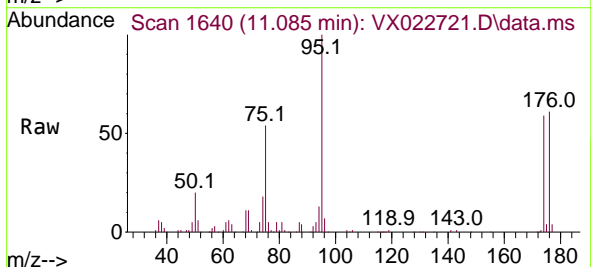
Instrument :
 MSVOA_X
ClientSampled :
 SPLP-AMND-COMPOSITE-HRE

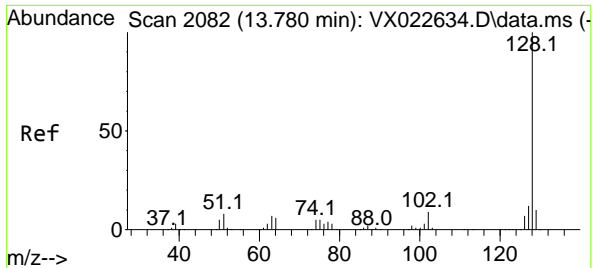
Tgt Ion: 75 Resp: 29442
 Ion Ratio Lower Upper
 75 100
 77 1.1 19.1 57.5#



#81
 trans-1,4-Dichloro-2-butene
 Concen: 64.64 ug/l
 RT: 11.085 min Scan# 1640
 Delta R.T. 0.061 min
 Lab File: VX022721.D
 Acq: 16 Jun 2021 15:04

Tgt Ion: 75 Resp: 29442
 Ion Ratio Lower Upper
 75 100
 53 0.0 74.5 111.7#
 89 0.0 37.9 56.9#





#95
 Naphthalene
 Concen: 1.50 ug/l
 RT: 13.780 min Scan# 2082
 Delta R.T. 0.000 min
 Lab File: VX022721.D
 Acq: 16 Jun 2021 15:04

Instrument :
 MSVOA_X
ClientSampled :
 SPLP-AMND-COMPOSITE-HRE

Tgt Ion:128 Resp: 81

Ion	Ratio	Lower	Upper
128	100		
127	0.0	10.3	15.5#
129	0.0	8.8	13.2#

