

Data Path : Z:\voasrv\HPCHEM1\MSVOA_X\Data\VX061621\
 Data File : VX022717.D
 Acq On : 16 Jun 2021 13:29
 Operator : JC/MD
 Sample : M2678-11RE
 Misc : 5.0mL/MSVOA_X/WATER
 ALS Vial : 8 Sample Multiplier: 1

Instrument :
 MSVOA_X
 ClientSampleId :
 SPLP-AMND-COMP-D(CL-01A)RE

Quant Time: Jun 17 02:21:39 2021
 Quant Method : Z:\voasrv\HPCHEM1\MSVOA_X\Method\82X061021W.M
 Quant Title : SW846 8260
 QLast Update : Thu Jun 10 12:20:00 2021
 Response via : Initial Calibration

Compound	R.T.	QIon	Response	Conc	Units	Dev(Min)

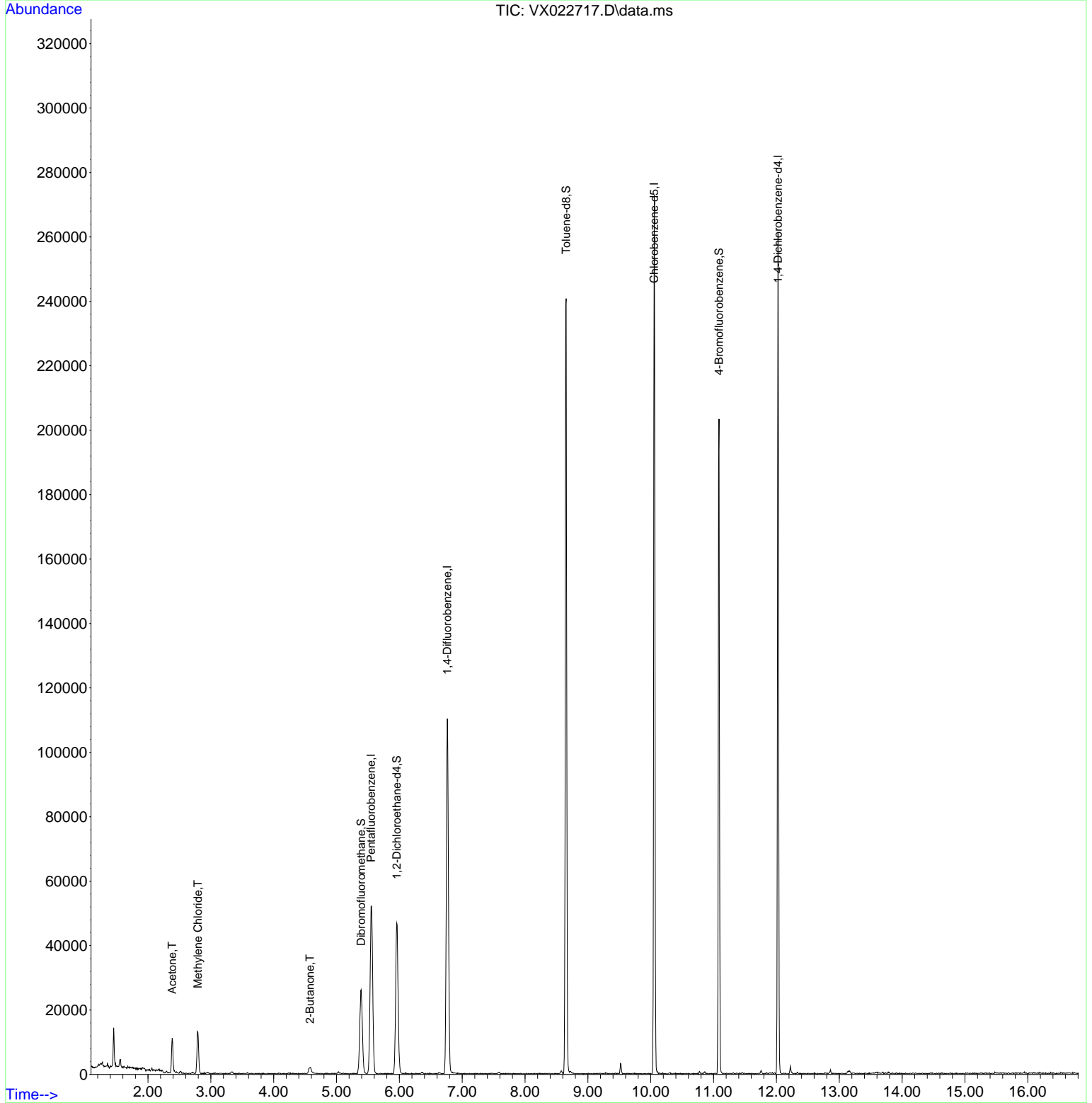
Internal Standards						
1) Pentafluorobenzene	5.550	168	45192	50.000	ug/l	-0.01
34) 1,4-Difluorobenzene	6.763	114	107101	50.000	ug/l	0.00
63) Chlorobenzene-d5	10.055	117	113012	50.000	ug/l	0.00
72) 1,4-Dichlorobenzene-d4	12.024	152	45451	50.000	ug/l	0.00
System Monitoring Compounds						
33) 1,2-Dichloroethane-d4	5.958	65	43468	53.482	ug/l	0.00
Spiked Amount	50.000	Range	78 - 117	Recovery	=	106.960%
35) Dibromofluoromethane	5.391	113	22793	33.356	ug/l	0.00
Spiked Amount	50.000	Range	75 - 124	Recovery	=	66.720%#
50) Toluene-d8	8.653	98	138859	51.549	ug/l	0.00
Spiked Amount	50.000	Range	92 - 112	Recovery	=	103.100%
62) 4-Bromofluorobenzene	11.086	95	54950	53.938	ug/l	0.00
Spiked Amount	50.000	Range	83 - 123	Recovery	=	107.880%
Target Compounds						
						Qvalue
16) Acetone	2.386	43	10938	30.055	ug/l	99
20) Methylene Chloride	2.794	84	5695	7.870	ug/l	88
25) 2-Butanone	4.574	43	1992	3.375	ug/l	93

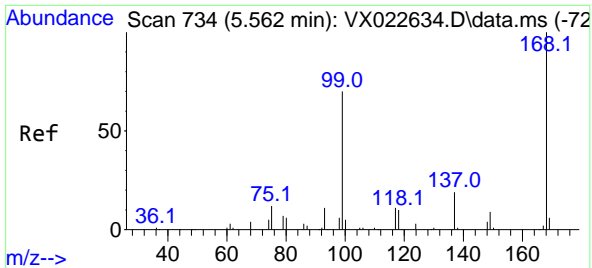
(#) = qualifier out of range (m) = manual integration (+) = signals summed

Data Path : Z:\voasrv\HPCHEM1\MSVOA_X\Data\VX061621\
 Data File : VX022717.D
 Acq On : 16 Jun 2021 13:29
 Operator : JC/MD
 Sample : M2678-11RE
 Misc : 5.0mL/MSVOA_X/WATER
 ALS Vial : 8 Sample Multiplier: 1

Instrument :
 MSVOA_X
ClientSampled :
 SPLP-AMND-COMP-D(CL-01A)RE

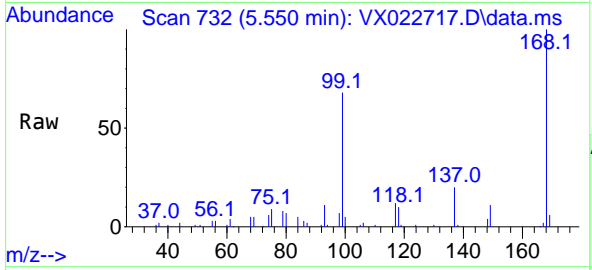
Quant Time: Jun 17 02:21:39 2021
 Quant Method : Z:\voasrv\HPCHEM1\MSVOA_X\Method\82X061021W.M
 Quant Title : SW846 8260
 QLast Update : Thu Jun 10 12:20:00 2021
 Response via : Initial Calibration



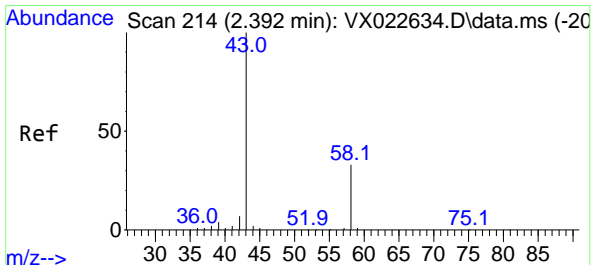
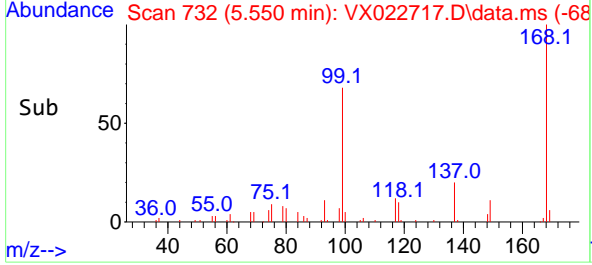
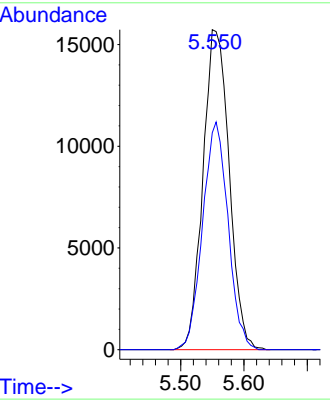


#1
 Pentafluorobenzene
 Concen: 50.000 ug/l
 RT: 5.550 min Scan# 732
 Delta R.T. -0.012 min
 Lab File: VX022717.D
 Acq: 16 Jun 2021 13:29

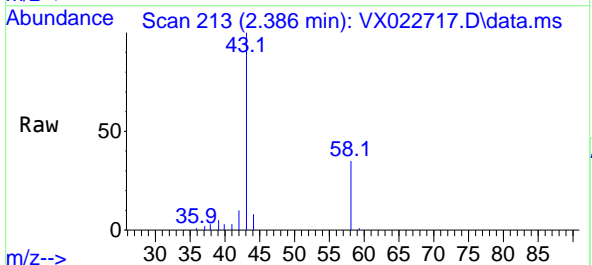
Instrument :
 MSVOA_X
ClientSampled :
 SPLP-AMND-COMP-D(CL-01A)RE



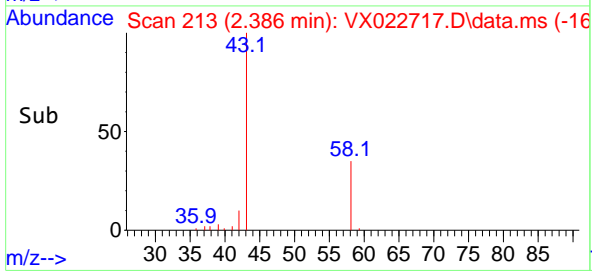
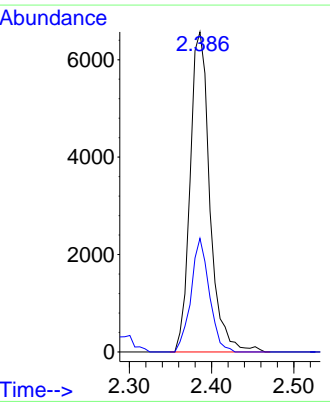
Tgt Ion:168 Resp: 45192
 Ion Ratio Lower Upper
 168 100
 99 67.8 45.8 68.6

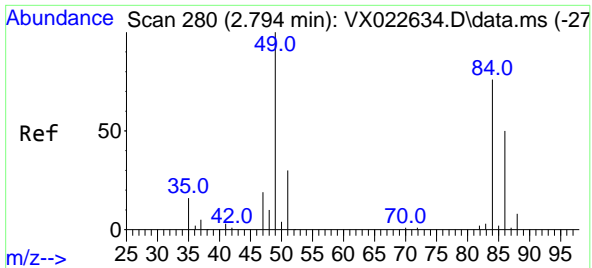


#16
 Acetone
 Concen: 30.055 ug/l
 RT: 2.386 min Scan# 213
 Delta R.T. -0.006 min
 Lab File: VX022717.D
 Acq: 16 Jun 2021 13:29



Tgt Ion: 43 Resp: 10938
 Ion Ratio Lower Upper
 43 100
 58 35.5 27.8 41.8



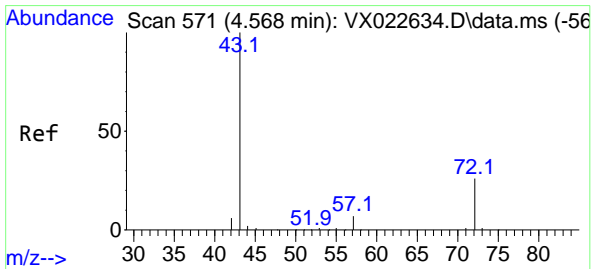
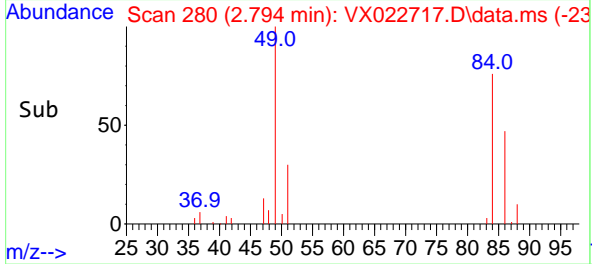
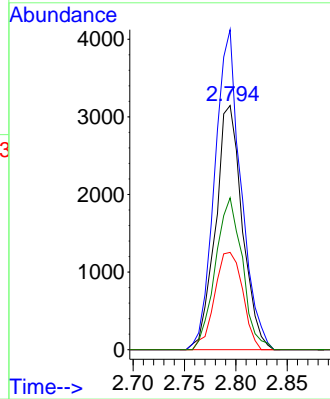
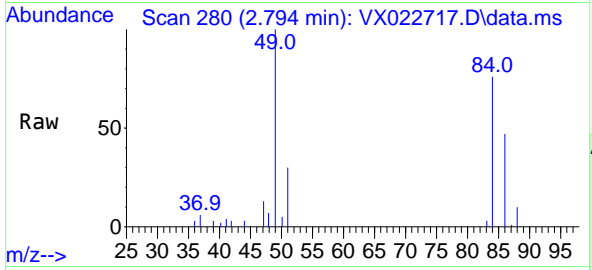


#20
 Methylene Chloride
 Concen: 7.870 ug/l
 RT: 2.794 min Scan# 280
 Delta R.T. 0.000 min
 Lab File: VX022717.D
 Acq: 16 Jun 2021 13:29

Instrument :
 MSVOA_X
 ClientSampled :
 SPLP-AMND-COMP-D(CL-01A)RE

Tgt Ion: 84 Resp: 5695

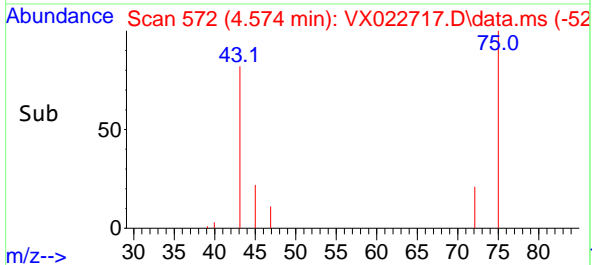
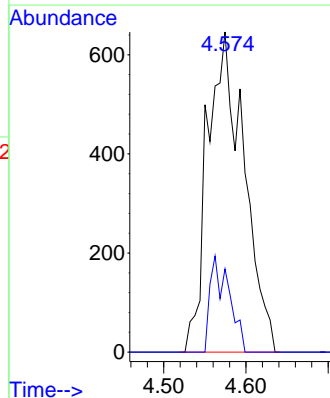
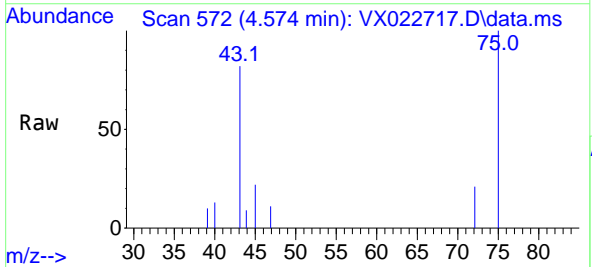
Ion	Ratio	Lower	Upper
84	100		
49	131.1	88.6	132.8
51	39.9	27.0	40.6
86	62.2	50.3	75.5

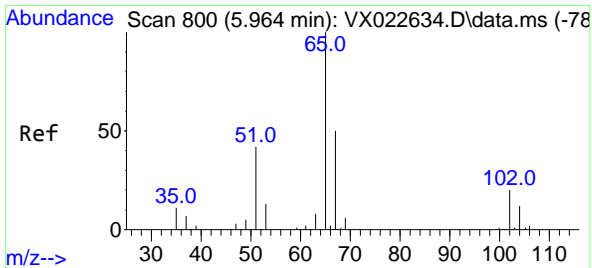


#25
 2-Butanone
 Concen: 3.375 ug/l
 RT: 4.574 min Scan# 572
 Delta R.T. 0.006 min
 Lab File: VX022717.D
 Acq: 16 Jun 2021 13:29

Tgt Ion: 43 Resp: 1992

Ion	Ratio	Lower	Upper
43	100		
72	26.0	23.7	35.5

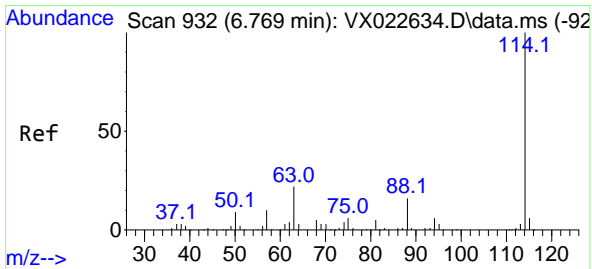
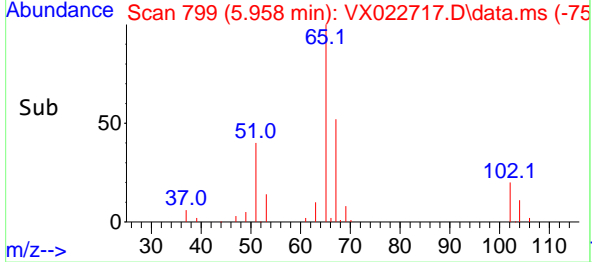
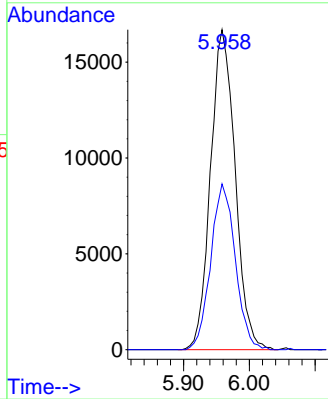
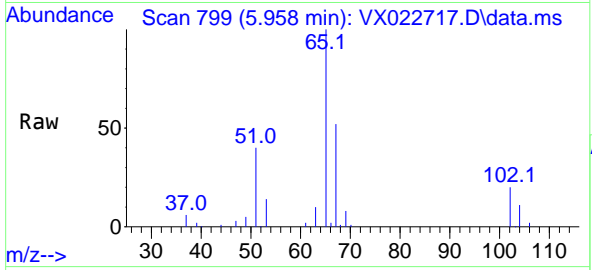




#33
 1,2-Dichloroethane-d4
 Concen: 53.482 ug/l
 RT: 5.958 min Scan# 799
 Delta R.T. -0.006 min
 Lab File: VX022717.D
 Acq: 16 Jun 2021 13:29

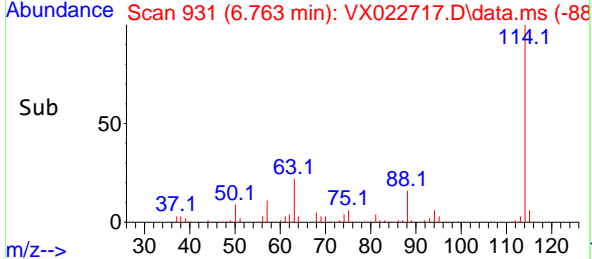
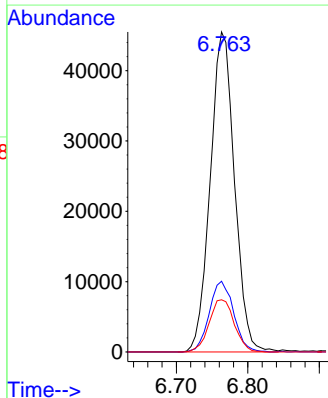
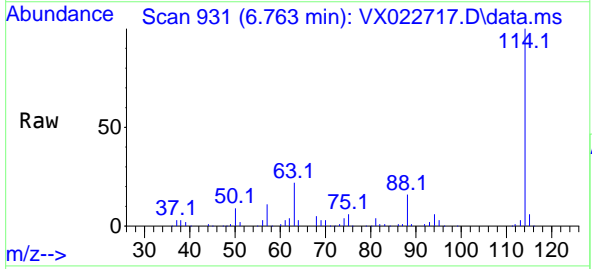
Instrument :
 MSVOA_X
ClientSampled :
 SPLP-AMND-COMP-D(CL-01A)RE

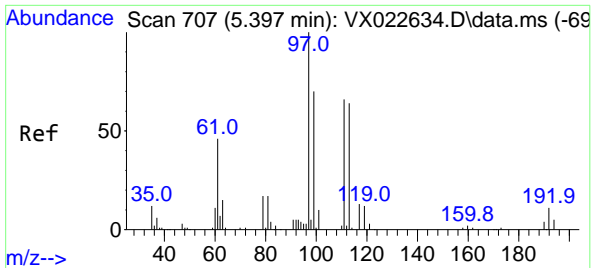
Tgt Ion: 65 Resp: 43468
 Ion Ratio Lower Upper
 65 100
 67 51.7 0.0 105.4



#34
 1,4-Difluorobenzene
 Concen: 50.000 ug/l
 RT: 6.763 min Scan# 931
 Delta R.T. -0.006 min
 Lab File: VX022717.D
 Acq: 16 Jun 2021 13:29

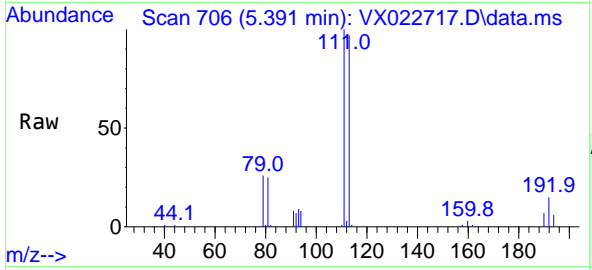
Tgt Ion: 114 Resp: 107101
 Ion Ratio Lower Upper
 114 100
 63 22.1 0.0 40.8
 88 16.3 0.0 32.8



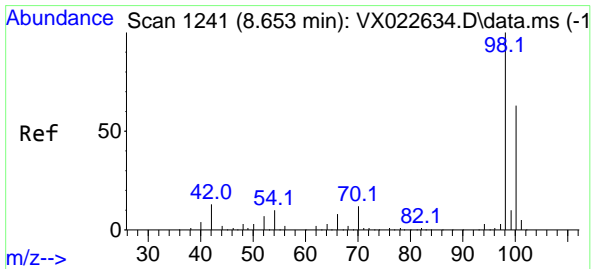
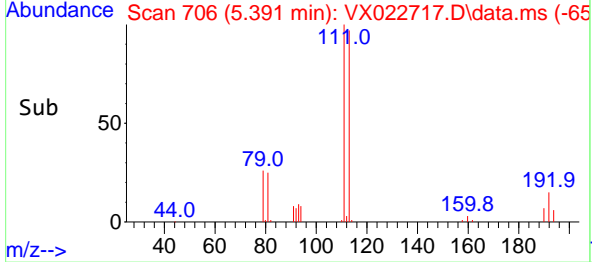
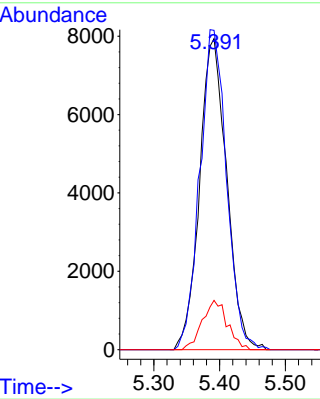


#35
 Dibromofluoromethane
 Concen: 33.356 ug/l
 RT: 5.391 min Scan# 706
 Delta R.T. 0.000 min
 Lab File: VX022717.D
 Acq: 16 Jun 2021 13:29

Instrument :
 MSVOA_X
ClientSampled :
 SPLP-AMND-COMP-D(CL-01A)RE

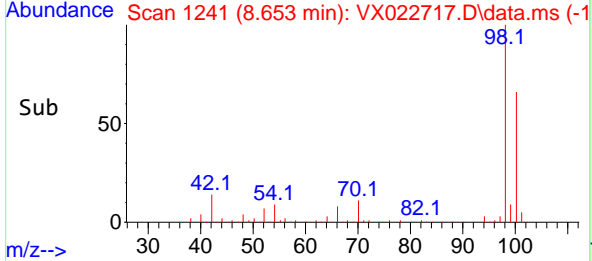
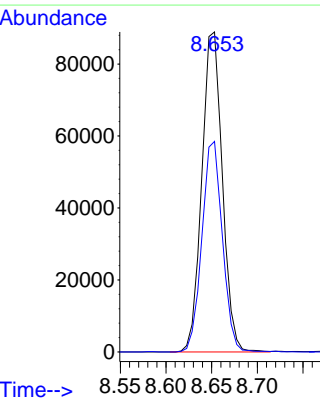
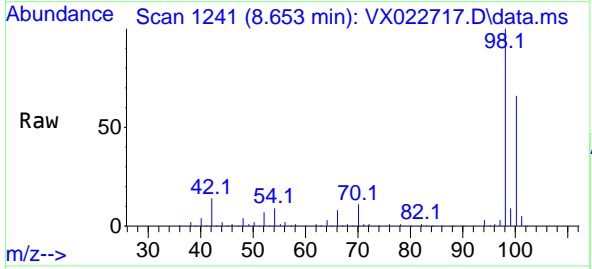


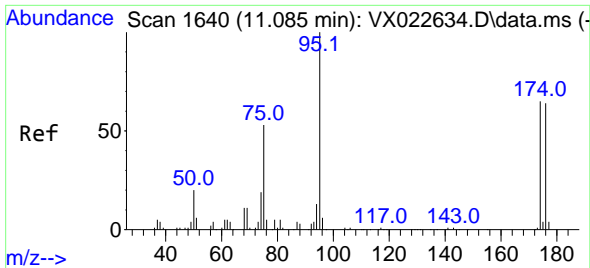
Tgt Ion:113 Resp: 22793
 Ion Ratio Lower Upper
 113 100
 111 101.3 81.9 122.9
 192 14.7 16.7 25.1#



#50
 Toluene-d8
 Concen: 51.549 ug/l
 RT: 8.653 min Scan# 1241
 Delta R.T. 0.000 min
 Lab File: VX022717.D
 Acq: 16 Jun 2021 13:29

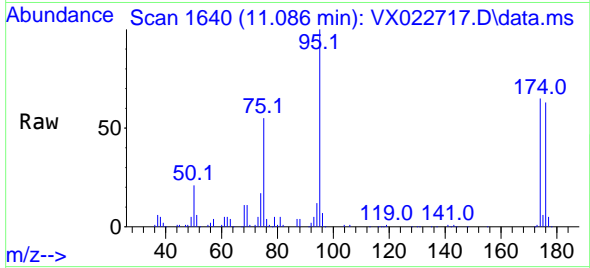
Tgt Ion: 98 Resp: 138859
 Ion Ratio Lower Upper
 98 100
 100 65.7 51.9 77.9



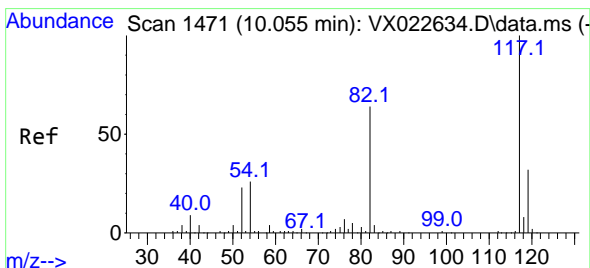
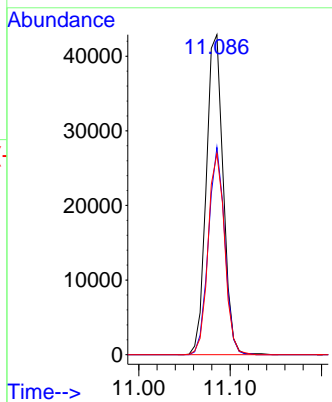
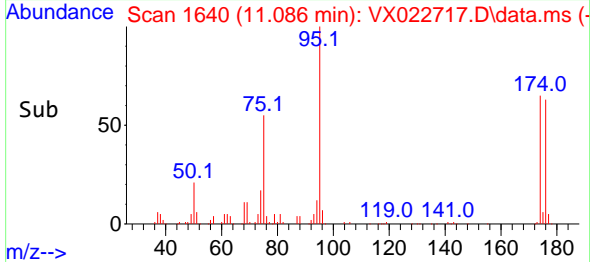


#62
 4-Bromofluorobenzene
 Concen: 53.938 ug/l
 RT: 11.086 min Scan# 1640
 Delta R.T. 0.001 min
 Lab File: VX022717.D
 Acq: 16 Jun 2021 13:29

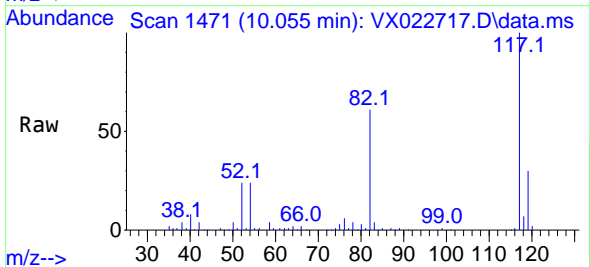
Instrument : MSVOA_X
 ClientSampled : SPLP-AMND-COMP-D(CL-01A)RE



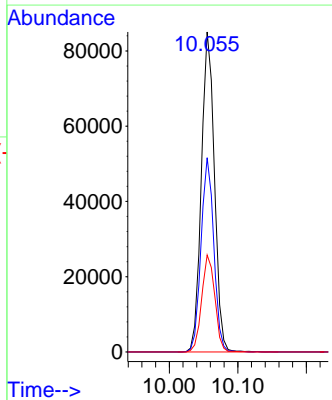
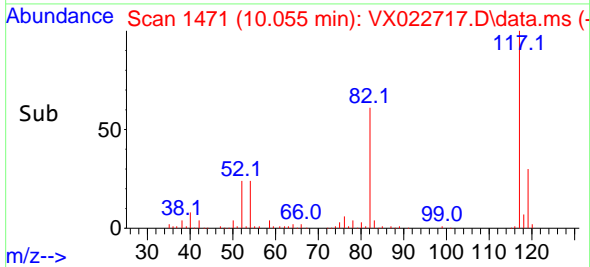
Tgt Ion: 95 Resp: 54950
 Ion Ratio Lower Upper
 95 100
 174 62.4 0.0 154.6
 176 61.4 0.0 155.8

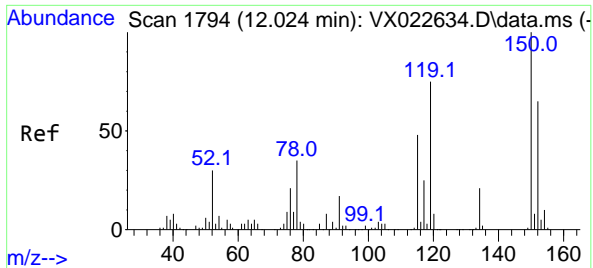


#63
 Chlorobenzene-d5
 Concen: 50.000 ug/l
 RT: 10.055 min Scan# 1471
 Delta R.T. 0.000 min
 Lab File: VX022717.D
 Acq: 16 Jun 2021 13:29



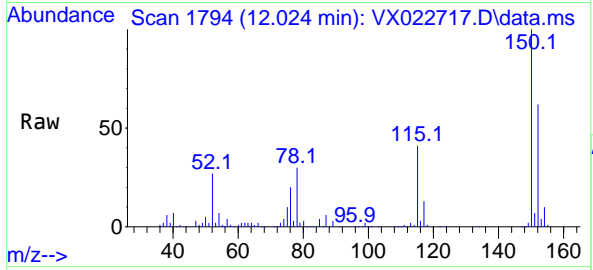
Tgt Ion: 117 Resp: 113012
 Ion Ratio Lower Upper
 117 100
 82 60.7 47.4 71.2
 119 30.3 26.6 39.8





#72
 1,4-Dichlorobenzene-d4
 Concen: 50.000 ug/l
 RT: 12.024 min Scan# 1794
 Delta R.T. 0.000 min
 Lab File: VX022717.D
 Acq: 16 Jun 2021 13:29

Instrument :
 MSVOA_X
ClientSampled :
 SPLP-AMND-COMP-D(CL-01A)RE



Tgt Ion:152 Resp: 45451

Ion	Ratio	Lower	Upper
152	100		
115	66.4	41.1	123.3
150	160.6	0.0	349.0

