

Data Path : Z:\voasrv\HPCHEM1\MSVOA\_X\Data\VX061621\  
 Data File : VX022723.D  
 Acq On : 16 Jun 2021 15:51  
 Operator : JC/MD  
 Sample : M2709-18RE  
 Misc : 5.0mL/MSVOA\_X/WATER  
 ALS Vial : 14 Sample Multiplier: 1

Instrument :  
 MSVOA\_X  
 ClientSampleId :  
 SPLP-AMND-COMP-O(CL-24)RE

Quant Time: Jun 17 02:48:04 2021  
 Quant Method : Z:\voasrv\HPCHEM1\MSVOA\_X\Method\82X061021W.M  
 Quant Title : SW846 8260  
 QLast Update : Thu Jun 10 12:20:00 2021  
 Response via : Initial Calibration

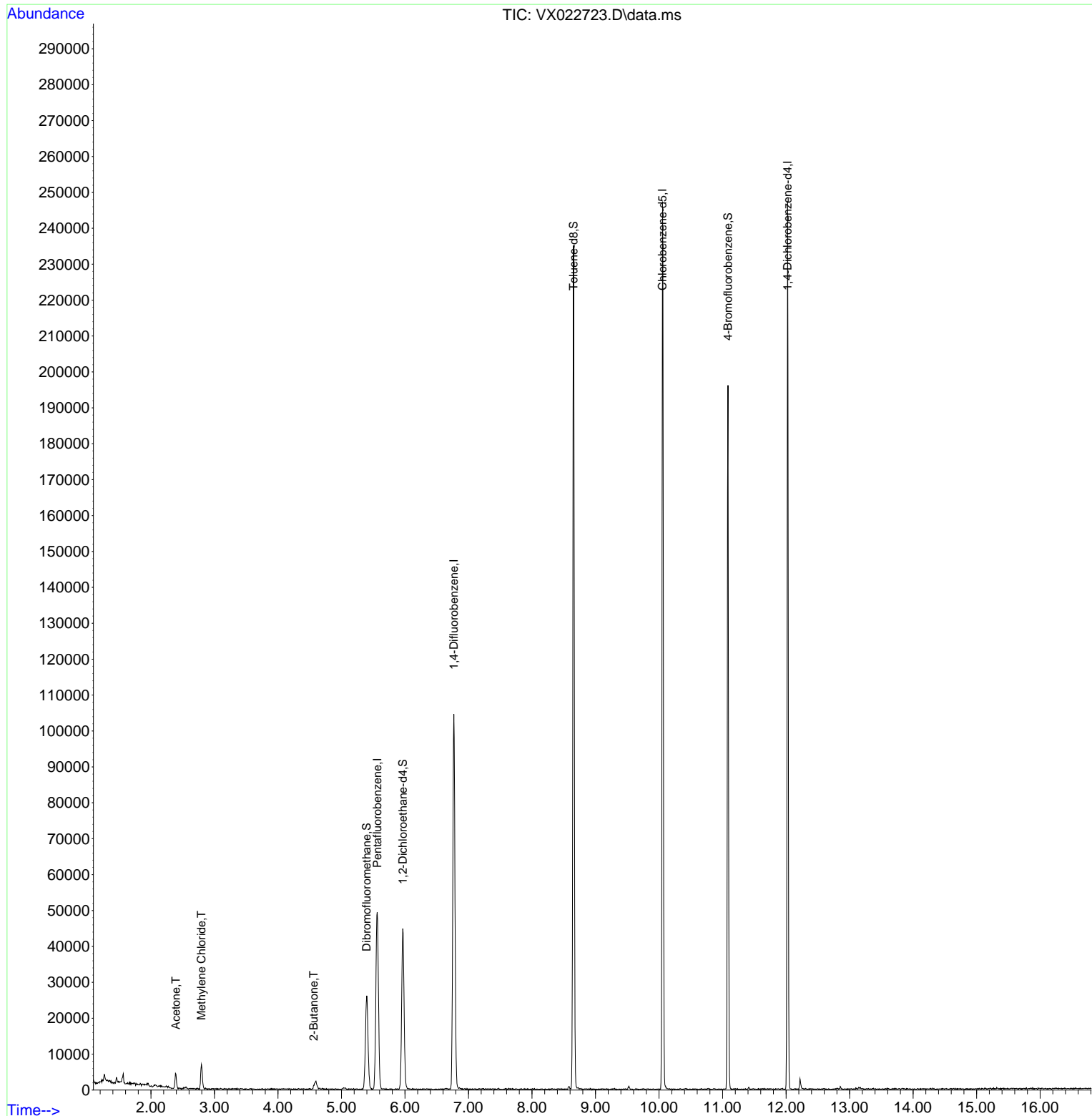
Compound	R.T.	QIon	Response	Conc	Units	Dev(Min)
-----						
Internal Standards						
1) Pentafluorobenzene	5.562	168	41580	50.000	ug/l	# 0.00
34) 1,4-Difluorobenzene	6.769	114	102347	50.000	ug/l	0.00
63) Chlorobenzene-d5	10.055	117	104919	50.000	ug/l	0.00
72) 1,4-Dichlorobenzene-d4	12.024	152	43486	50.000	ug/l	0.00
System Monitoring Compounds						
33) 1,2-Dichloroethane-d4	5.964	65	39902	53.359	ug/l	0.00
Spiked Amount	50.000	Range	78 - 117	Recovery	=	106.720%
35) Dibromofluoromethane	5.397	113	22643	34.675	ug/l	0.00
Spiked Amount	50.000	Range	75 - 124	Recovery	=	69.360%#
50) Toluene-d8	8.653	98	129597	50.345	ug/l	0.00
Spiked Amount	50.000	Range	92 - 112	Recovery	=	100.700%
62) 4-Bromofluorobenzene	11.085	95	52284	53.705	ug/l	0.00
Spiked Amount	50.000	Range	83 - 123	Recovery	=	107.400%
Target Compounds						
						Qvalue
16) Acetone	2.392	43	4575	13.663	ug/l	# 86
20) Methylene Chloride	2.794	84	2951	4.310	ug/l	# 79
25) 2-Butanone	4.562	43	1133	2.086	ug/l	95
-----						

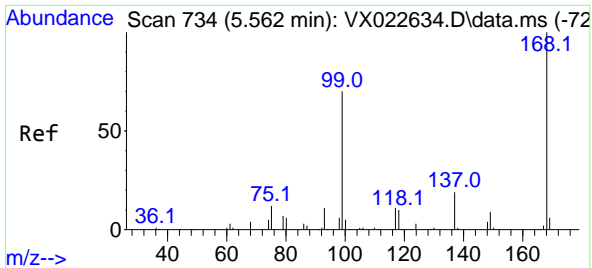
(#) = qualifier out of range (m) = manual integration (+) = signals summed

Data Path : Z:\voasrv\HPCHEM1\MSVOA\_X\Data\VX061621\  
 Data File : VX022723.D  
 Acq On : 16 Jun 2021 15:51  
 Operator : JC/MD  
 Sample : M2709-18RE  
 Misc : 5.0mL/MSVOA\_X/WATER  
 ALS Vial : 14 Sample Multiplier: 1

**Instrument :**  
 MSVOA\_X  
**ClientSampled :**  
 SPLP-AMND-COMP-O(CL-24)RE

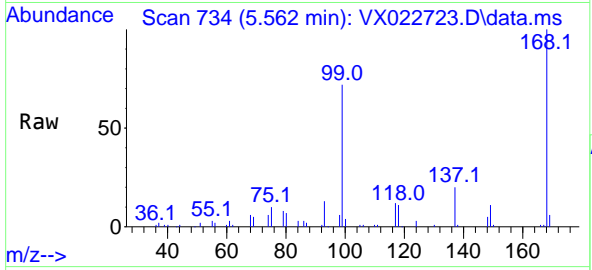
Quant Time: Jun 17 02:48:04 2021  
 Quant Method : Z:\voasrv\HPCHEM1\MSVOA\_X\Method\82X061021W.M  
 Quant Title : SW846 8260  
 QLast Update : Thu Jun 10 12:20:00 2021  
 Response via : Initial Calibration



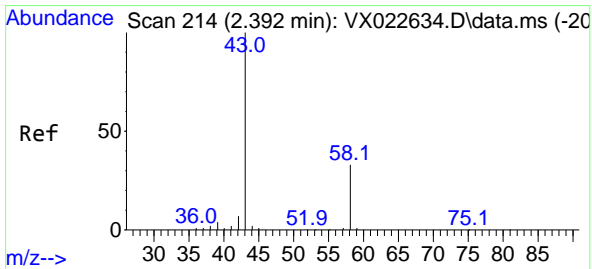
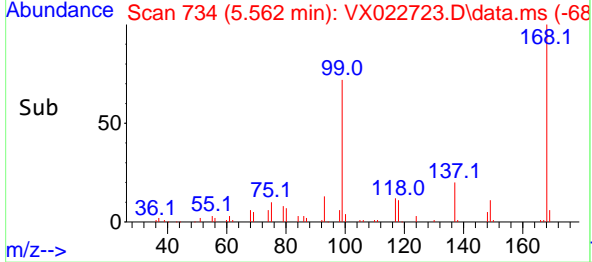
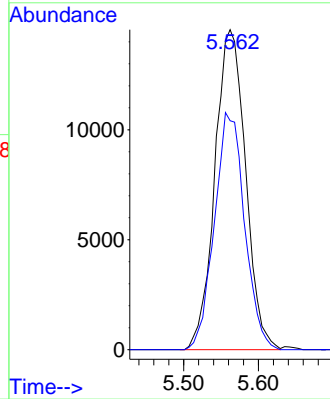


#1  
 Pentafluorobenzene  
 Concen: 50.000 ug/l  
 RT: 5.562 min Scan# 734  
 Delta R.T. -0.000 min  
 Lab File: VX022723.D  
 Acq: 16 Jun 2021 15:51

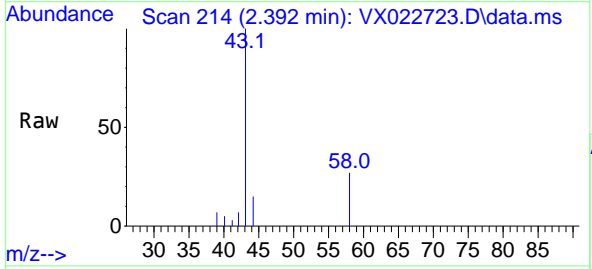
**Instrument :**  
 MSVOA\_X  
**ClientSampled :**  
 SPLP-AMND-COMP-O(CL-24)RE



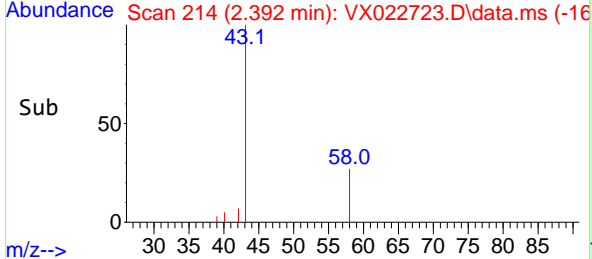
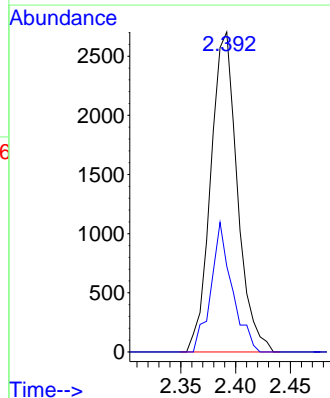
Tgt Ion:168 Resp: 41580  
 Ion Ratio Lower Upper  
 168 100  
 99 71.6 45.8 68.6#

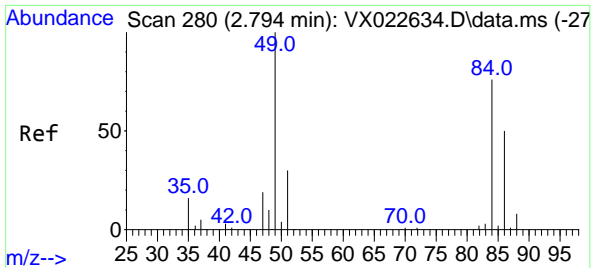


#16  
 Acetone  
 Concen: 13.663 ug/l  
 RT: 2.392 min Scan# 214  
 Delta R.T. -0.000 min  
 Lab File: VX022723.D  
 Acq: 16 Jun 2021 15:51



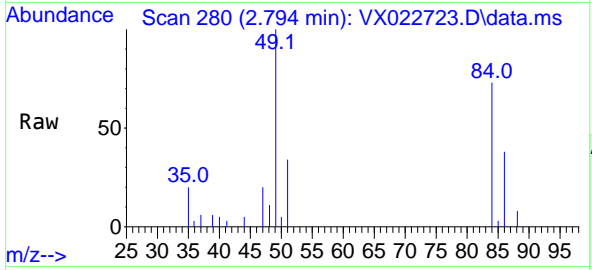
Tgt Ion: 43 Resp: 4575  
 Ion Ratio Lower Upper  
 43 100  
 58 26.8 27.8 41.8#





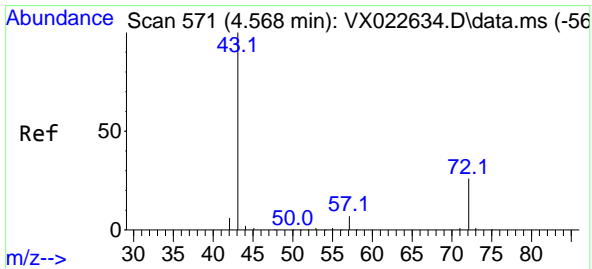
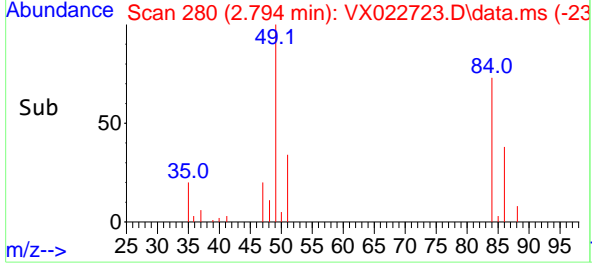
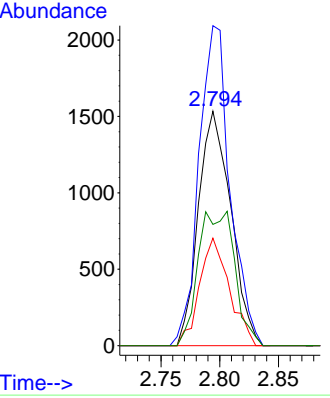
#20  
 Methylene Chloride  
 Concen: 4.310 ug/l  
 RT: 2.794 min Scan# 280  
 Delta R.T. 0.000 min  
 Lab File: VX022723.D  
 Acq: 16 Jun 2021 15:51

**Instrument :**  
 MSVOA\_X  
**ClientSampleId :**  
 SPLP-AMND-COMP-O(CL-24)RE

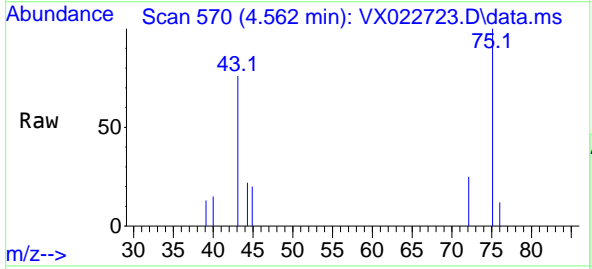


Tgt Ion: 84 Resp: 2951

Ion	Ratio	Lower	Upper
84	100		
49	136.5	88.6	132.8#
51	45.9	27.0	40.6#
86	51.8	50.3	75.5

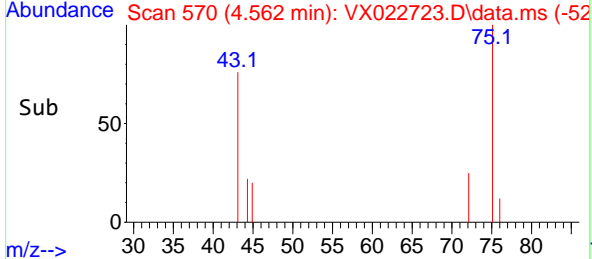
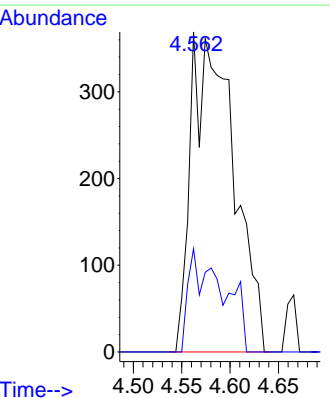


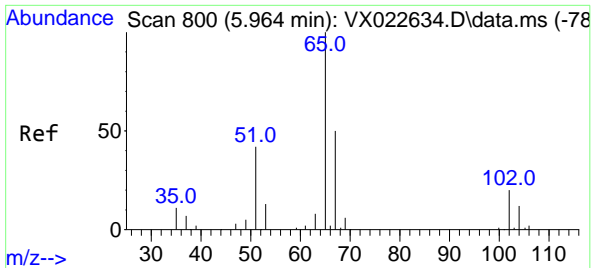
#25  
 2-Butanone  
 Concen: 2.086 ug/l  
 RT: 4.562 min Scan# 570  
 Delta R.T. -0.006 min  
 Lab File: VX022723.D  
 Acq: 16 Jun 2021 15:51



Tgt Ion: 43 Resp: 1133

Ion	Ratio	Lower	Upper
43	100		
72	32.2	23.7	35.5

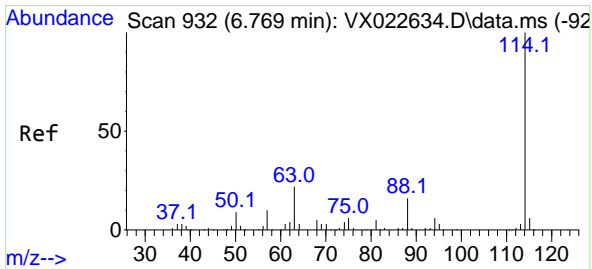
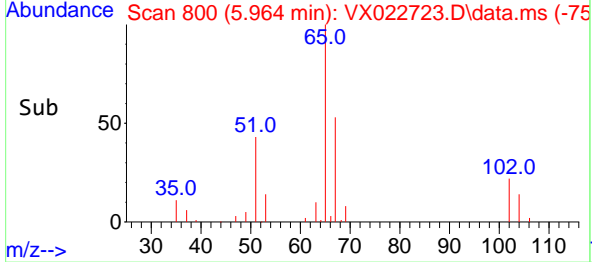
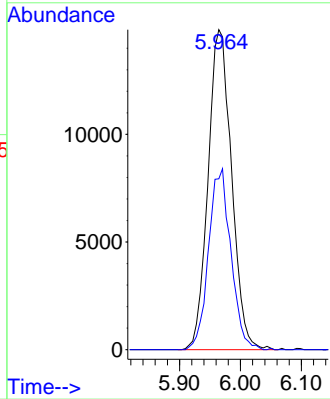
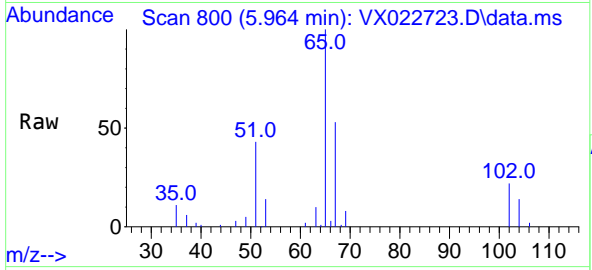




#33  
 1,2-Dichloroethane-d4  
 Concen: 53.359 ug/l  
 RT: 5.964 min Scan# 800  
 Delta R.T. 0.000 min  
 Lab File: VX022723.D  
 Acq: 16 Jun 2021 15:51

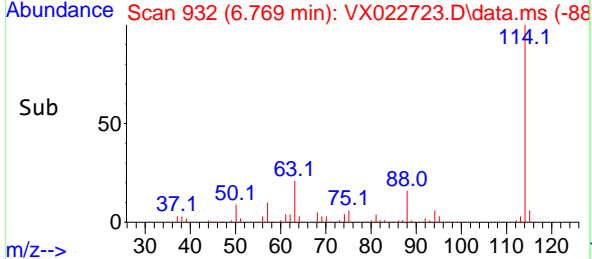
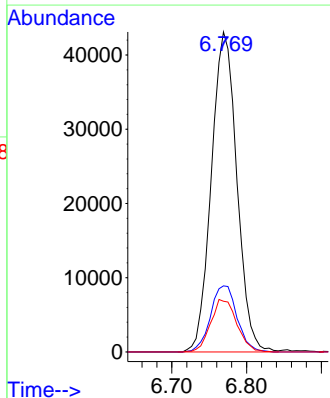
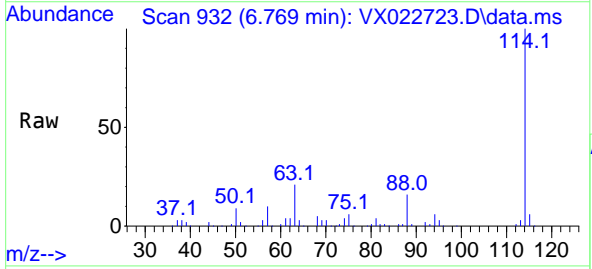
**Instrument :**  
 MSVOA\_X  
**ClientSampled :**  
 SPLP-AMND-COMP-O(CL-24)RE

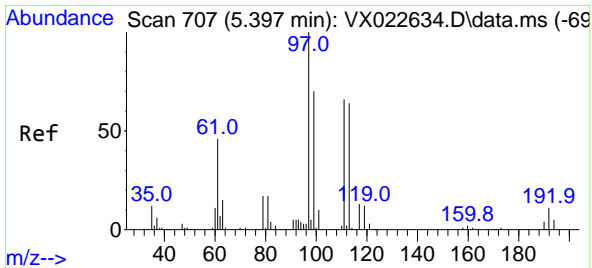
Tgt Ion: 65 Resp: 39902  
 Ion Ratio Lower Upper  
 65 100  
 67 53.6 0.0 105.4



#34  
 1,4-Difluorobenzene  
 Concen: 50.000 ug/l  
 RT: 6.769 min Scan# 932  
 Delta R.T. 0.000 min  
 Lab File: VX022723.D  
 Acq: 16 Jun 2021 15:51

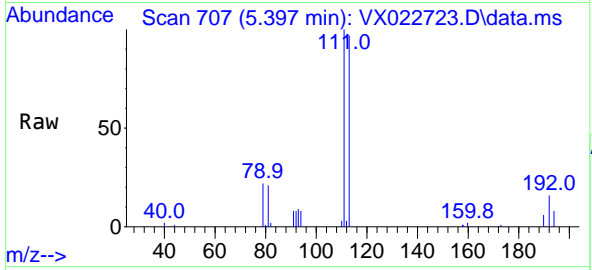
Tgt Ion: 114 Resp: 102347  
 Ion Ratio Lower Upper  
 114 100  
 63 20.6 0.0 40.8  
 88 15.9 0.0 32.8



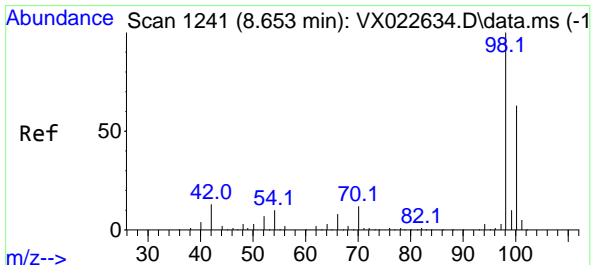
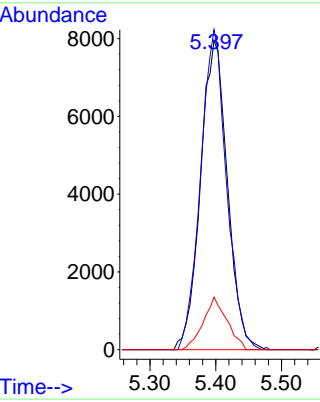
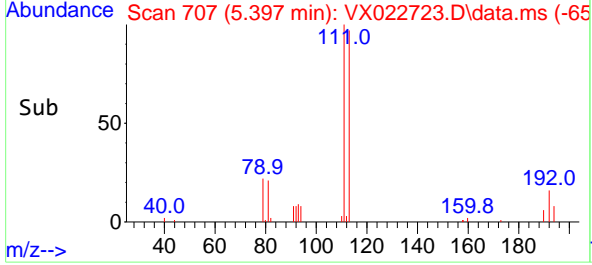


#35  
 Dibromofluoromethane  
 Concen: 34.675 ug/l  
 RT: 5.397 min Scan# 707  
 Delta R.T. 0.006 min  
 Lab File: VX022723.D  
 Acq: 16 Jun 2021 15:51

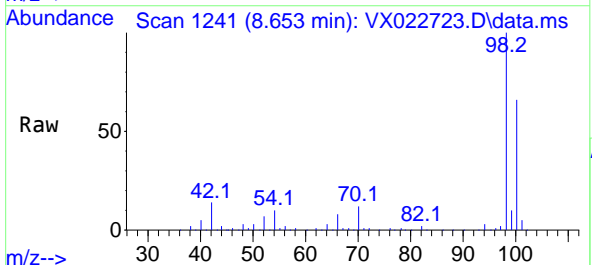
**Instrument :**  
 MSVOA\_X  
**ClientSampled :**  
 SPLP-AMND-COMP-O(CL-24)RE



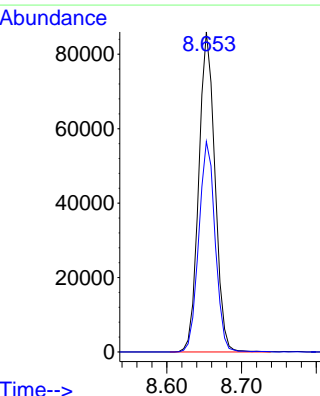
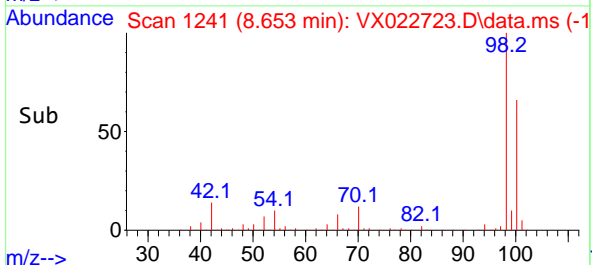
Tgt Ion:113 Resp: 22643  
 Ion Ratio Lower Upper  
 113 100  
 111 100.0 81.9 122.9  
 192 15.0 16.7 25.1#

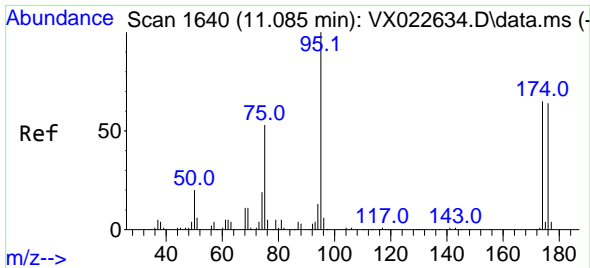


#50  
 Toluene-d8  
 Concen: 50.345 ug/l  
 RT: 8.653 min Scan# 1241  
 Delta R.T. -0.000 min  
 Lab File: VX022723.D  
 Acq: 16 Jun 2021 15:51



Tgt Ion: 98 Resp: 129597  
 Ion Ratio Lower Upper  
 98 100  
 100 66.5 51.9 77.9



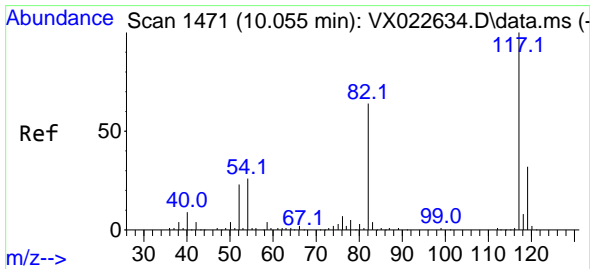
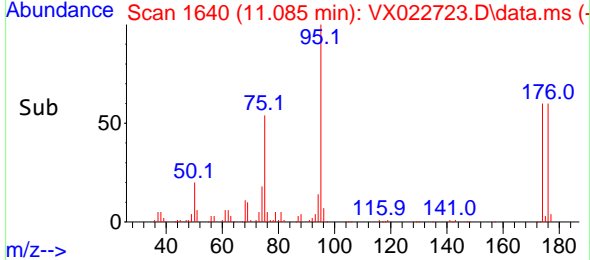
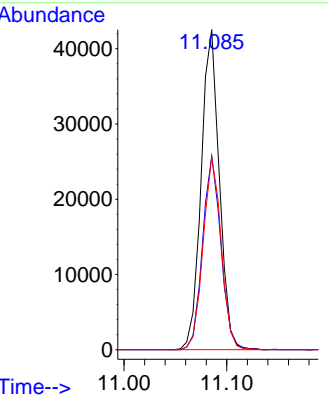
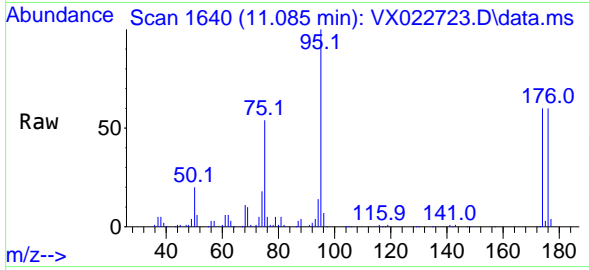


#62  
 4-Bromofluorobenzene  
 Concen: 53.705 ug/l  
 RT: 11.085 min Scan# 1640  
 Delta R.T. 0.000 min  
 Lab File: VX022723.D  
 Acq: 16 Jun 2021 15:51

Instrument : MSVOA\_X  
 ClientSampleId : SPLP-AMND-COMP-O(CL-24)RE

Tgt Ion: 95 Resp: 52284

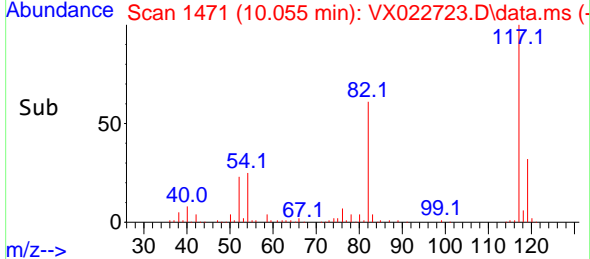
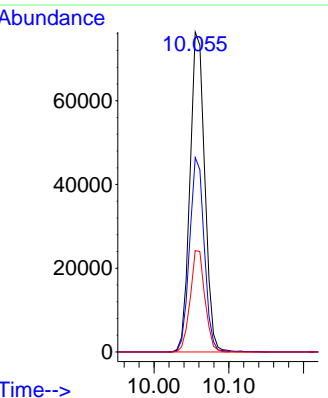
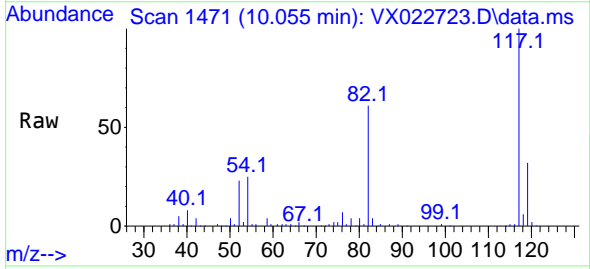
Ion	Ratio	Lower	Upper
95	100		
174	60.8	0.0	154.6
176	59.9	0.0	155.8

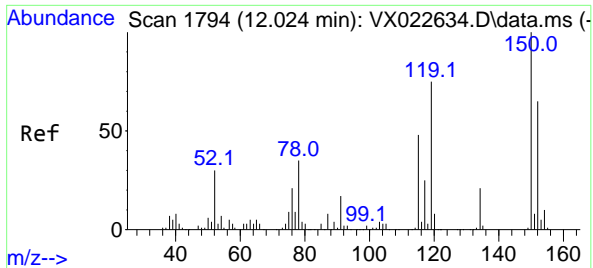


#63  
 Chlorobenzene-d5  
 Concen: 50.000 ug/l  
 RT: 10.055 min Scan# 1471  
 Delta R.T. 0.000 min  
 Lab File: VX022723.D  
 Acq: 16 Jun 2021 15:51

Tgt Ion: 117 Resp: 104919

Ion	Ratio	Lower	Upper
117	100		
82	60.8	47.4	71.2
119	31.7	26.6	39.8





#72  
 1,4-Dichlorobenzene-d4  
 Concen: 50.000 ug/l  
 RT: 12.024 min Scan# 1794  
 Delta R.T. -0.000 min  
 Lab File: VX022723.D  
 Acq: 16 Jun 2021 15:51

**Instrument :**  
 MSVOA\_X  
**ClientSampled :**  
 SPLP-AMND-COMP-O(CL-24)RE

Tgt Ion:152 Resp: 43486

Ion	Ratio	Lower	Upper
152	100		
115	66.0	41.1	123.3
150	155.0	0.0	349.0

