

Data Path : Z:\VOASRV\HPCHEM1\MSVOA X\DATA\VX061719\  
 Data File : VX010320.D  
 Acq On : 17 Jun 2019 13:35  
 Operator : JC/SP  
 Sample : K3154-06  
 Misc : 5.0mL/MSVOA X/WATER  
 ALS Vial : 7 Sample Multiplier: 1

Instrument :  
 MSVOA\_X  
 ClientSampleId :  
 JC-02-061419-C

Quant Time: Jun 18 02:11:38 2019  
 Quant Method : Z:\VOASRV\HPCHEM1\MSVOA\_X\METHOD\82X060719W.M  
 Quant Title : SW846 8260  
 QLast Update : Sat Jun 08 02:12:13 2019  
 Response via : Initial Calibration

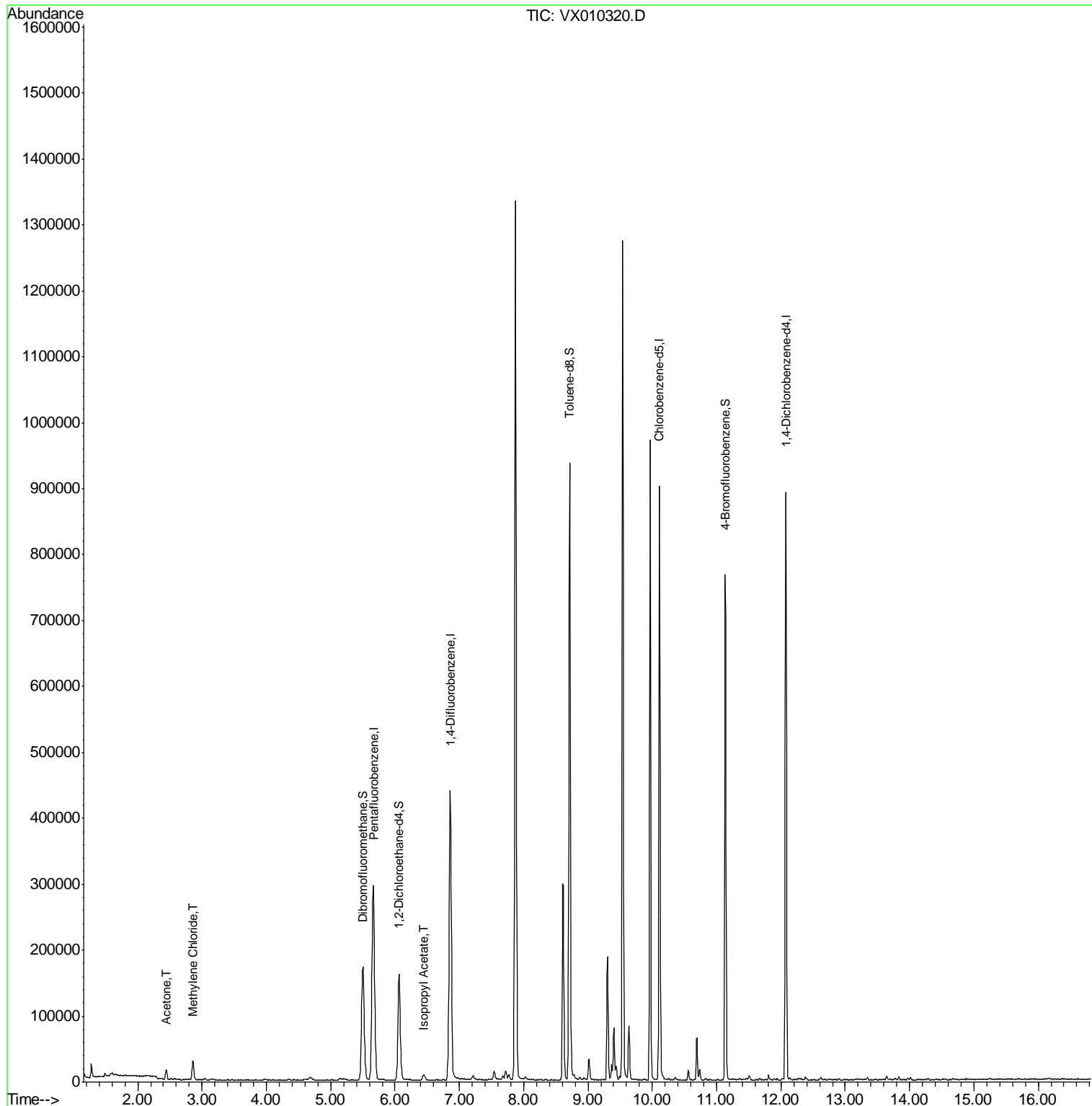
Internal Standards	R.T.	QIon	Response	Conc	Units	Dev(Min)
1) Pentafluorobenzene	5.67	168	321206	50.00	ug/l	0.00
34) 1,4-Difluorobenzene	6.86	114	483174	50.00	ug/l	0.00
63) Chlorobenzene-d5	10.11	117	439519	50.00	ug/l	0.00
72) 1,4-Dichlorobenzene-d4	12.08	152	204651	50.00	ug/l	0.00
System Monitoring Compounds						
33) 1,2-Dichloroethane-d4	6.06	65	146005	46.57	ug/l	0.00
Spiked Amount	50.000		Recovery	=	93.14%	
35) Dibromofluoromethane	5.50	113	146519	49.16	ug/l	0.00
Spiked Amount	50.000		Recovery	=	98.32%	
50) Toluene-d8	8.71	98	571275	51.14	ug/l	0.00
Spiked Amount	50.000		Recovery	=	102.28%	
62) 4-Bromofluorobenzene	11.13	95	193564	46.40	ug/l	0.00
Spiked Amount	50.000		Recovery	=	92.80%	
Target Compounds						
16) Acetone	2.45	43	15614	10.588	ug/l #	86
20) Methylene Chloride	2.85	84	14225	4.392	ug/l #	78
43) Isopropyl Acetate	6.45	43	13137	1.916	ug/l #	88

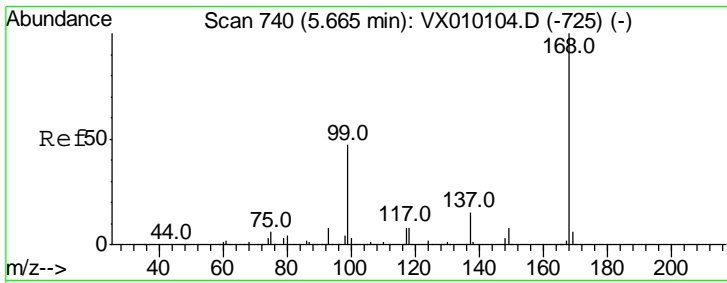
(#) = qualifier out of range (m) = manual integration (+) = signals summed

Data Path : Z:\VOASRV\HPCHEM1\MSVOA X\DATA\VX061719\  
 Data File : VX010320.D  
 Acq On : 17 Jun 2019 13:35  
 Operator : JC/SP  
 Sample : K3154-06  
 Misc : 5.0mL/MSVOA X/WATER  
 ALS Vial : 7 Sample Multiplier: 1

Instrument :  
 MSVOA\_X  
 ClientSampleId :  
 JC-02-061419-C

Quant Time: Jun 18 02:11:38 2019  
 Quant Method : Z:\VOASRV\HPCHEM1\MSVOA\_X\METHOD\82X060719W.M  
 Quant Title : SW846 8260  
 QLast Update : Sat Jun 08 02:12:13 2019  
 Response via : Initial Calibration

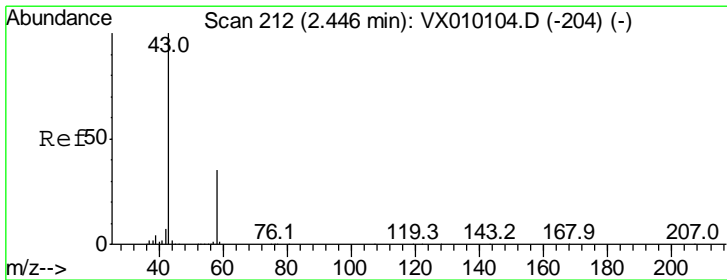
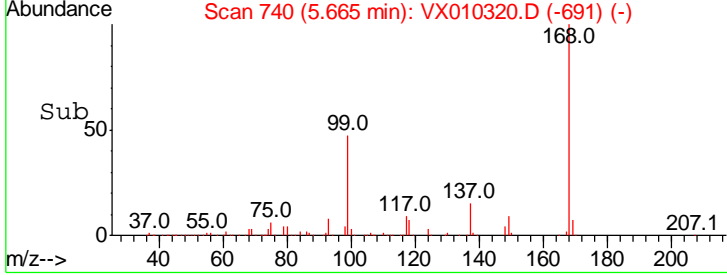
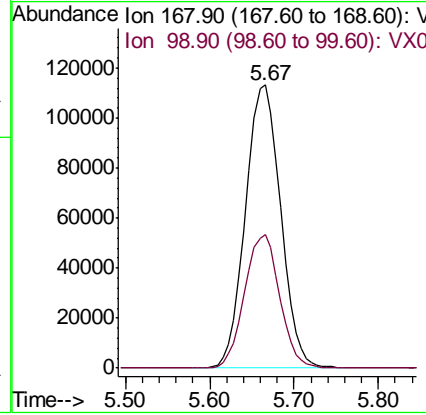
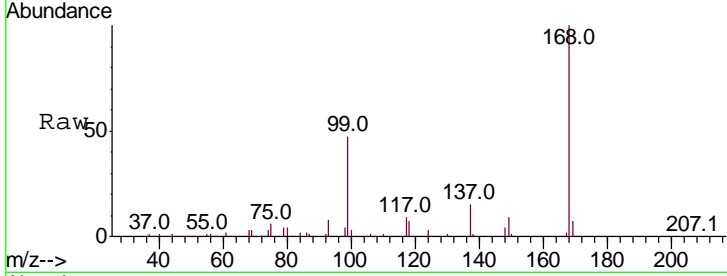




#1  
 Pentafluorobenzene  
 Concen: 50.000 ug/l  
 RT: 5.67 min Scan# 740  
 Delta R.T. -0.00 min  
 Lab File: VX010320.D  
 Acq: 17 Jun 2019 13:35

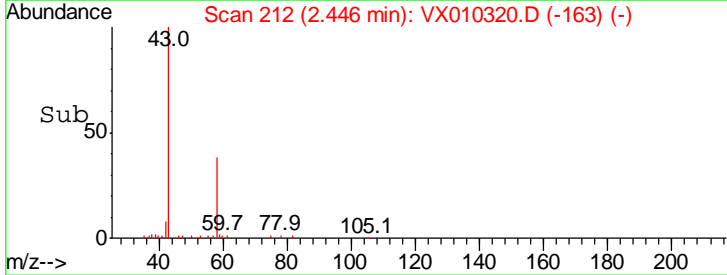
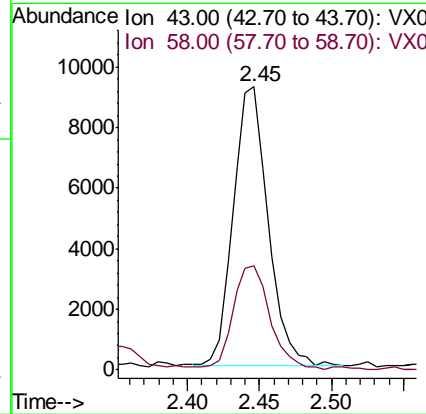
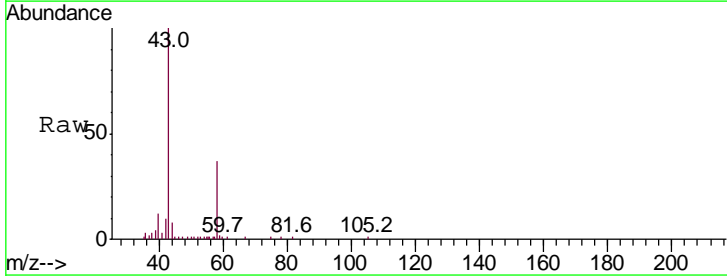
Instrument : MSVOA\_X  
 ClientSampled : JC-02-061419-C

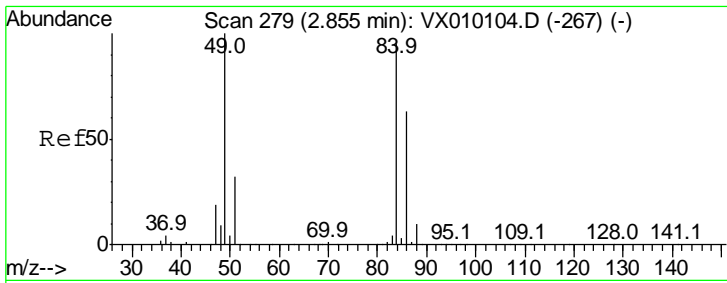
Tgt Ion	Resp	Lower	Upper
168	100		
99	47.0	43.0	64.6



#16  
 Acetone  
 Concen: 10.588 ug/l  
 RT: 2.45 min Scan# 212  
 Delta R.T. -0.00 min  
 Lab File: VX010320.D  
 Acq: 17 Jun 2019 13:35

Tgt Ion	Resp	Lower	Upper
43	100		
58	36.2	23.2	34.8#

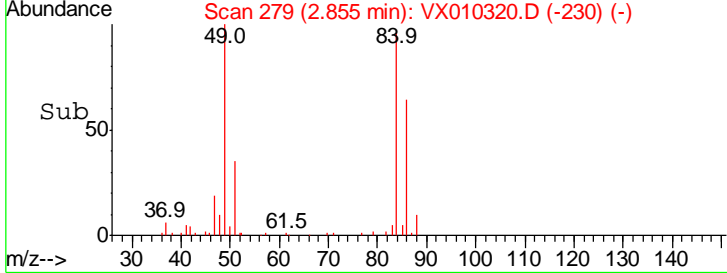
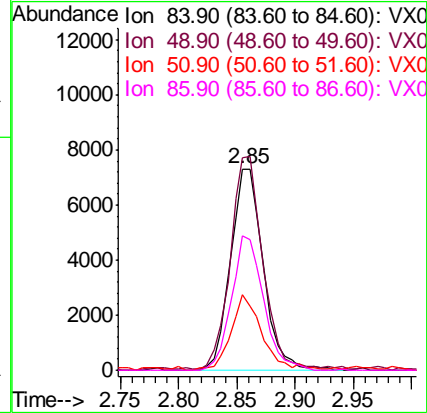
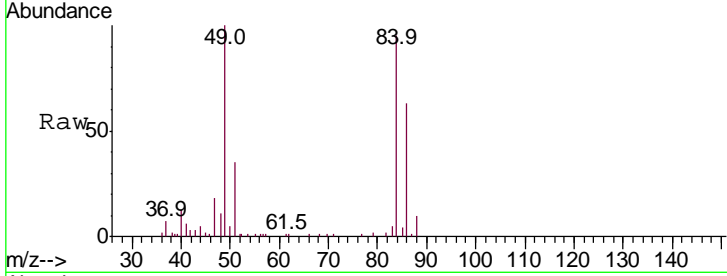




#20  
 Methylene Chloride  
 Concen: 4.392 ug/l  
 RT: 2.85 min Scan# 279  
 Delta R.T. -0.00 min  
 Lab File: VX010320.D  
 Acq: 17 Jun 2019 13:35

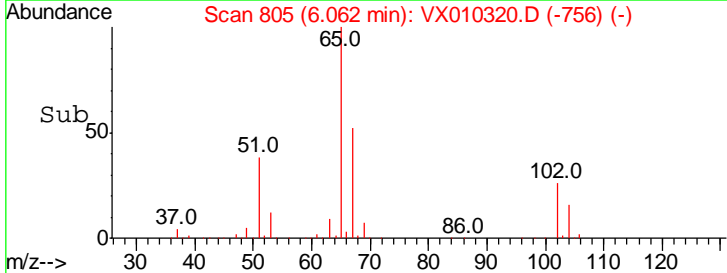
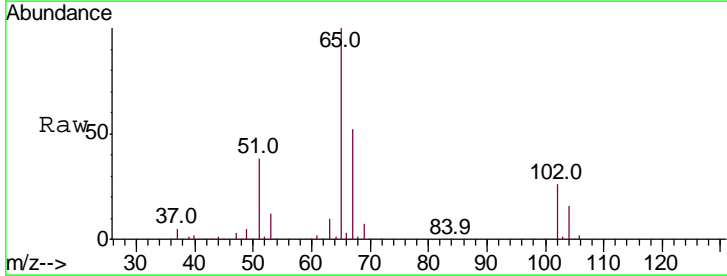
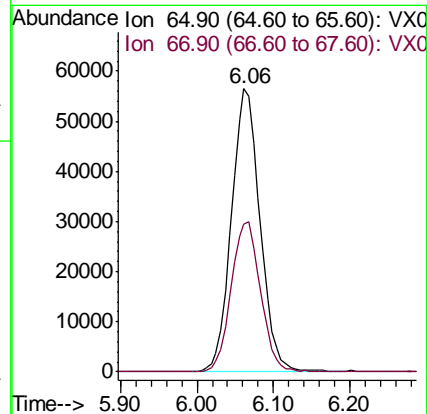
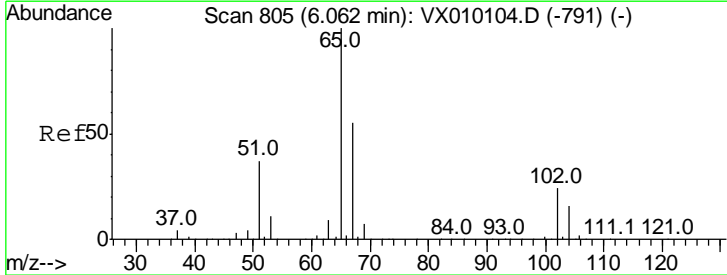
Instrument :  
 MSVOA\_X  
 ClientSampled :  
 JC-02-061419-C

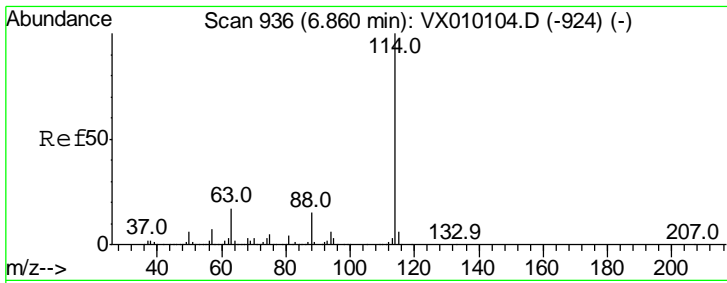
Tgt Ion	Resp	Lower	Upper
84	14225		
Ion Ratio			
84	100		
49	104.4	115.8	173.6#
51	37.2	34.4	51.6
86	66.6	49.7	74.5



#33  
 1,2-Dichloroethane-d4  
 Concen: 46.568 ug/l  
 RT: 6.06 min Scan# 805  
 Delta R.T. 0.00 min  
 Lab File: VX010320.D  
 Acq: 17 Jun 2019 13:35

Tgt Ion	Resp	Lower	Upper
65	146005		
Ion Ratio			
65	100		
67	54.5	0.0	108.4

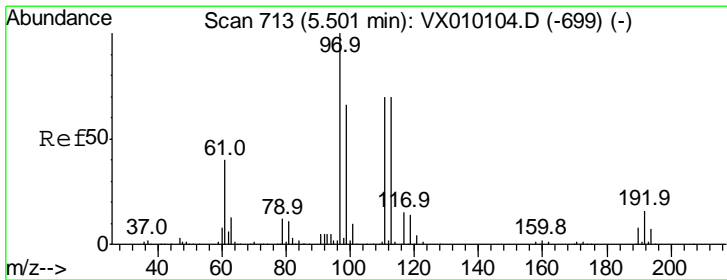
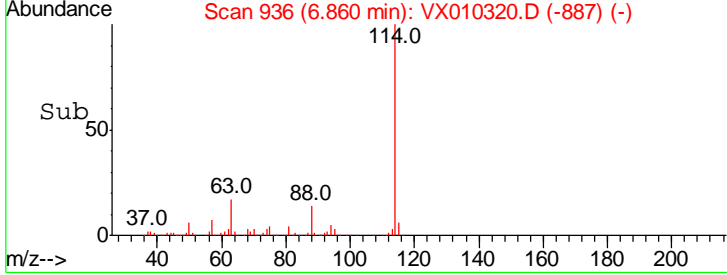
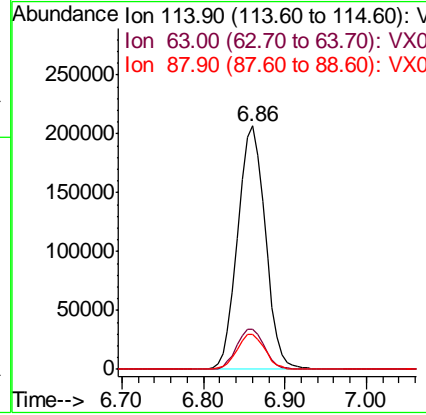
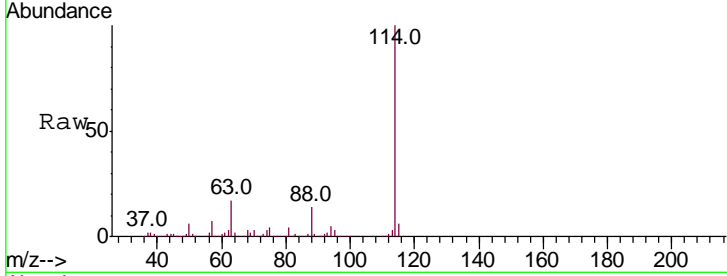




#34  
 1,4-Difluorobenzene  
 Concen: 50.000 ug/l  
 RT: 6.86 min Scan# 936  
 Delta R.T. -0.00 min  
 Lab File: VX010320.D  
 Acq: 17 Jun 2019 13:35

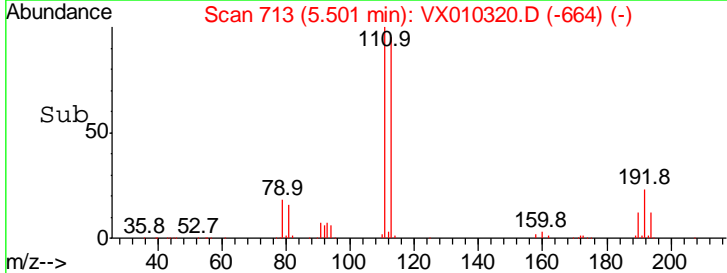
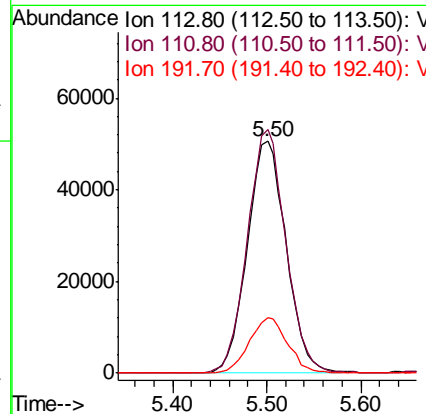
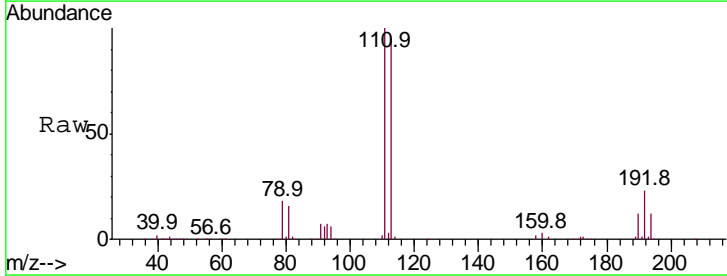
Instrument : MSVOA\_X  
 ClientSampled : JC-02-061419-C

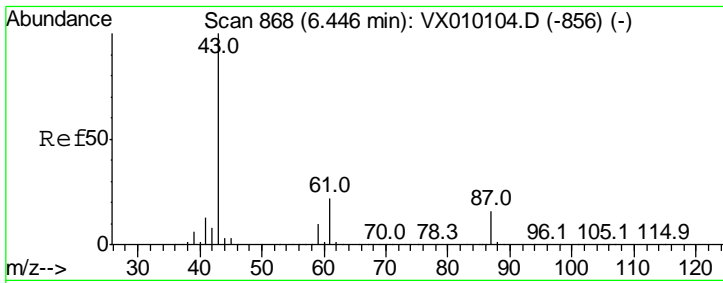
Tgt Ion	Resp	Lower	Upper
114	100		
63	16.5	0.0	47.4
88	14.4	0.0	33.0



#35  
 Dibromofluoromethane  
 Concen: 49.162 ug/l  
 RT: 5.50 min Scan# 713  
 Delta R.T. -0.00 min  
 Lab File: VX010320.D  
 Acq: 17 Jun 2019 13:35

Tgt Ion	Resp	Lower	Upper
113	100		
111	103.8	82.2	123.2
192	23.5	17.1	25.7

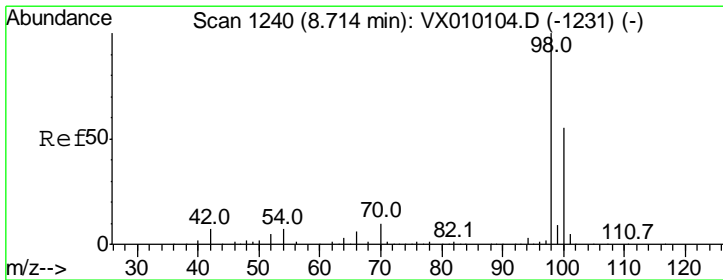
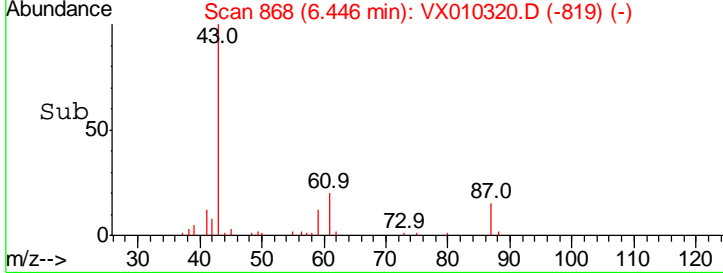
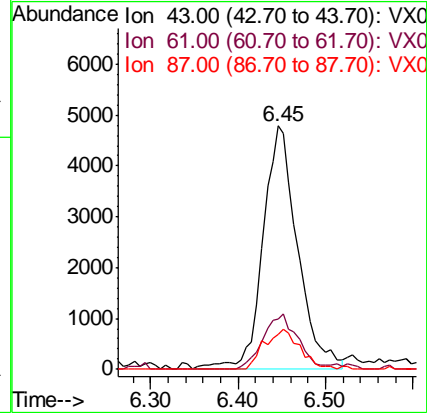
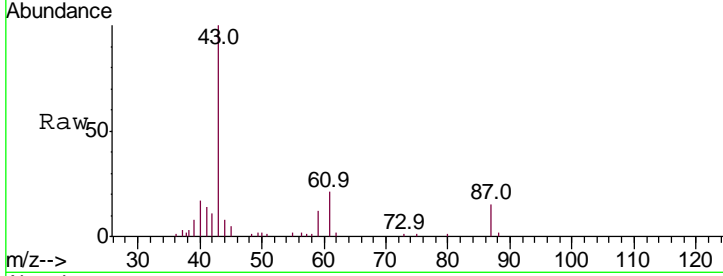




#43  
 Isopropyl Acetate  
 Concen: 1.916 ug/l  
 RT: 6.45 min Scan# 868  
 Delta R.T. -0.00 min  
 Lab File: VX010320.D  
 Acq: 17 Jun 2019 13:35

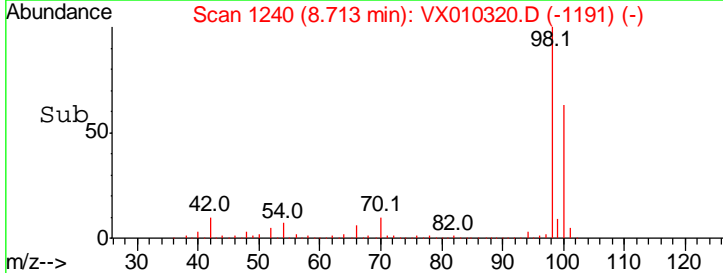
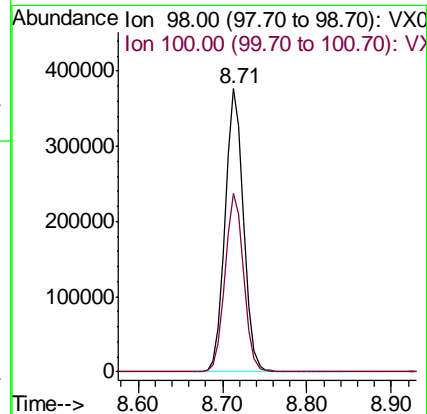
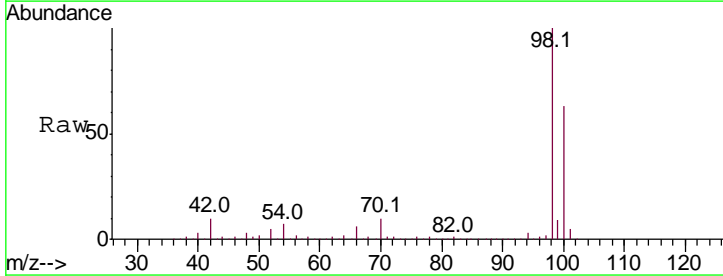
Instrument :  
 MSVOA\_X  
 ClientSampled :  
 JC-02-061419-C

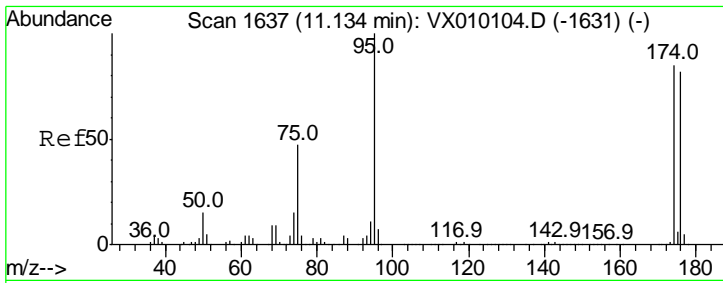
Tgt Ion	Resp	Lower	Upper
43	13137		
61	22.6	14.6	21.8#
87	17.0	8.7	13.1#



#50  
 Toluene-d8  
 Concen: 51.145 ug/l  
 RT: 8.71 min Scan# 1240  
 Delta R.T. 0.00 min  
 Lab File: VX010320.D  
 Acq: 17 Jun 2019 13:35

Tgt Ion	Resp	Lower	Upper
98	571275		
100	63.9	51.5	77.3

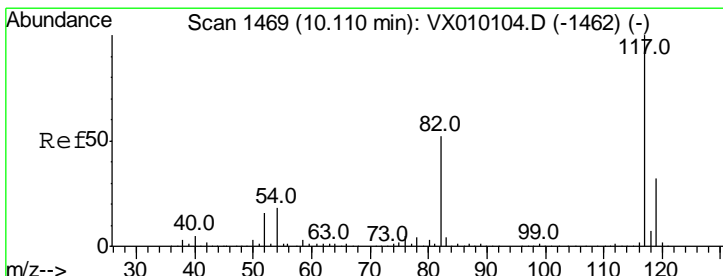
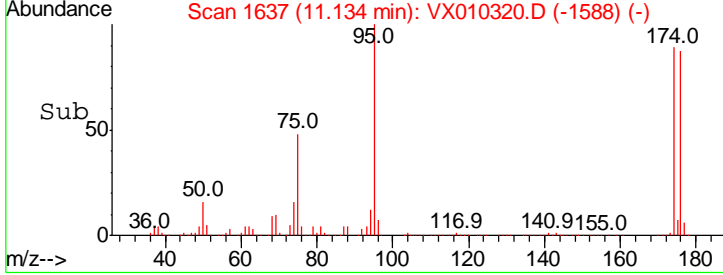
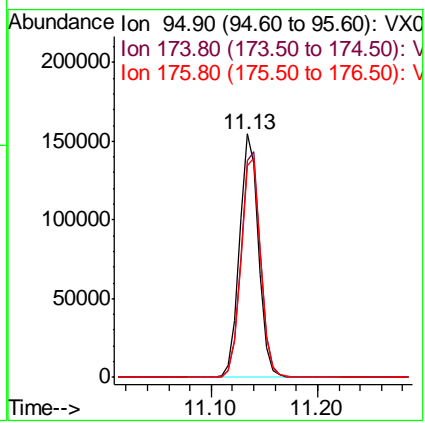
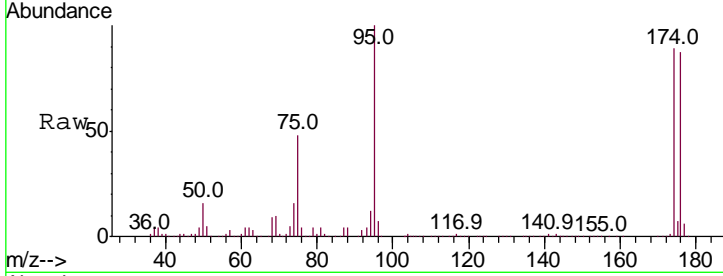




#62  
 4-Bromofluorobenzene  
 Concen: 46.402 ug/l  
 RT: 11.13 min Scan# 1637  
 Delta R.T. 0.00 min  
 Lab File: VX010320.D  
 Acq: 17 Jun 2019 13:35

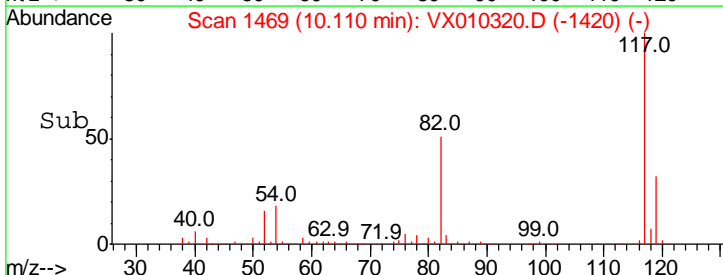
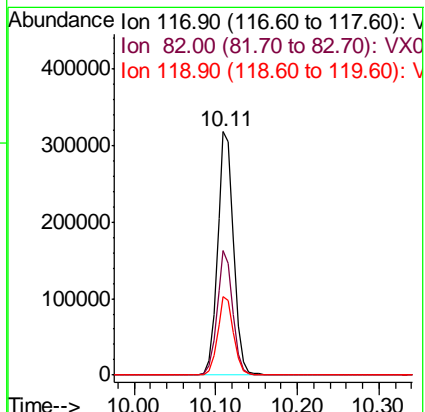
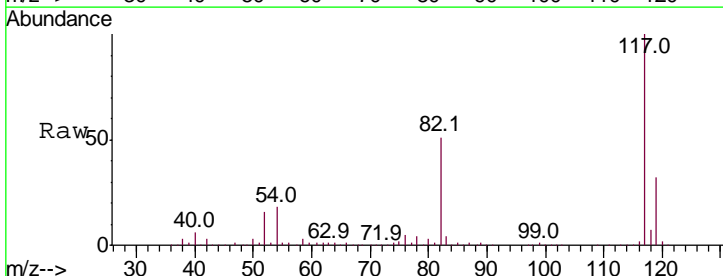
Instrument : MSVOA\_X  
 ClientSampled : JC-02-061419-C

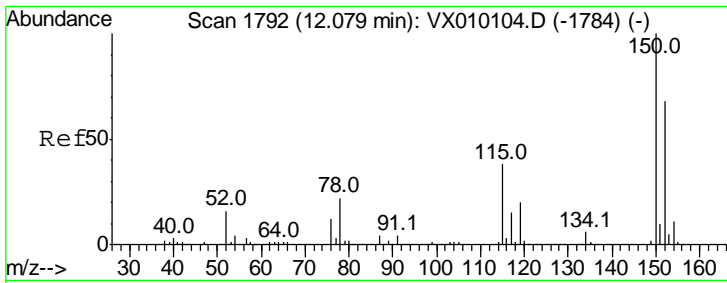
Tgt Ion	Resp	Lower	Upper
95	100		
174	95.1	0.0	160.4
176	92.9	0.0	154.6



#63  
 Chlorobenzene-d5  
 Concen: 50.000 ug/l  
 RT: 10.11 min Scan# 1469  
 Delta R.T. -0.00 min  
 Lab File: VX010320.D  
 Acq: 17 Jun 2019 13:35

Tgt Ion	Resp	Lower	Upper
117	100		
82	50.9	49.2	73.8
119	32.4	25.2	37.8





#72  
 1,4-Dichlorobenzene-d4  
 Concen: 50.000 ug/l  
 RT: 12.08 min Scan# 1792  
 Delta R.T. -0.00 min  
 Lab File: VX010320.D  
 Acq: 17 Jun 2019 13:35

Instrument : MSVOA\_X  
 ClientSampled : JC-02-061419-C

Tot Ion	Resp	Lower	Upper
152	100		
115	54.6	41.4	124.2
150	157.8	0.0	345.2

