

Data Path : Z:\voasrv\HPCHEM1\MSVOA\_X\Data\VX061721\  
 Data File : VX022747.D  
 Acq On : 17 Jun 2021 17:49  
 Operator : JC/MD  
 Sample : M2750-09  
 Misc : 5.0mL/MSVOA\_X/WATER  
 ALS Vial : 23 Sample Multiplier: 1

Instrument :  
 MSVOA\_X  
 ClientSampleId :  
 RE120D2-20210615

Integration Parameters: RTEINT.P

Integrator: RTE  
 Smoothing : ON Filtering: 5  
 Sampling : 1 Min Area: 3 % of largest Peak  
 Start Thrs: 0.2 Max Peaks: 100  
 Stop Thrs : 0 Peak Location: TOP

If leading or trailing edge < 100 prefer < Baseline drop else tangent >  
 Peak separation: 5

Method : Z:\voasrv\HPCHEM1\MSVOA\_X\Method\82X061021W.M  
 Title : SW846 8260

Signal : TIC: VX022747.D\data.ms

peak #	R.T. min	first scan	max scan	last scan	PK TY	peak height	corr. area	corr. % max.	% of total
1	2.331	197	204	211	rBV2	58524	108157	3.01%	1.934%
2	5.397	696	707	723	rBV3	39552	114586	3.19%	2.049%
3	5.562	723	734	746	rBV2	65677	183810	5.12%	3.286%
4	5.964	790	800	813	rBV	51989	134675	3.75%	2.408%
5	6.769	922	932	946	rBV	114639	269078	7.50%	4.811%
6	7.135	981	992	1006	rBV	1651683	3589321	100.00%	64.173%
7	8.653	1234	1241	1254	rBV	247217	373702	10.41%	6.681%
8	9.275	1338	1343	1349	rBV	37183	54723	1.52%	0.978%
9	10.055	1466	1471	1481	rVB	227255	311044	8.67%	5.561%
10	11.085	1634	1640	1649	rBV	175301	211203	5.88%	3.776%
11	12.024	1789	1794	1802	rVB	195869	242889	6.77%	4.343%

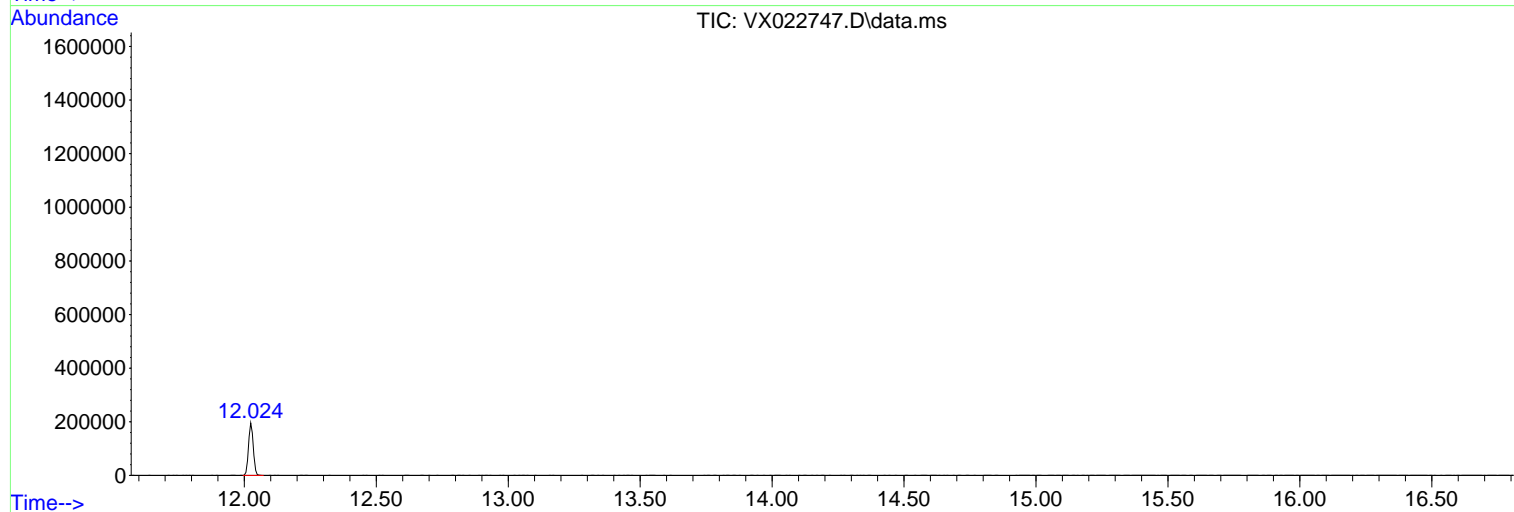
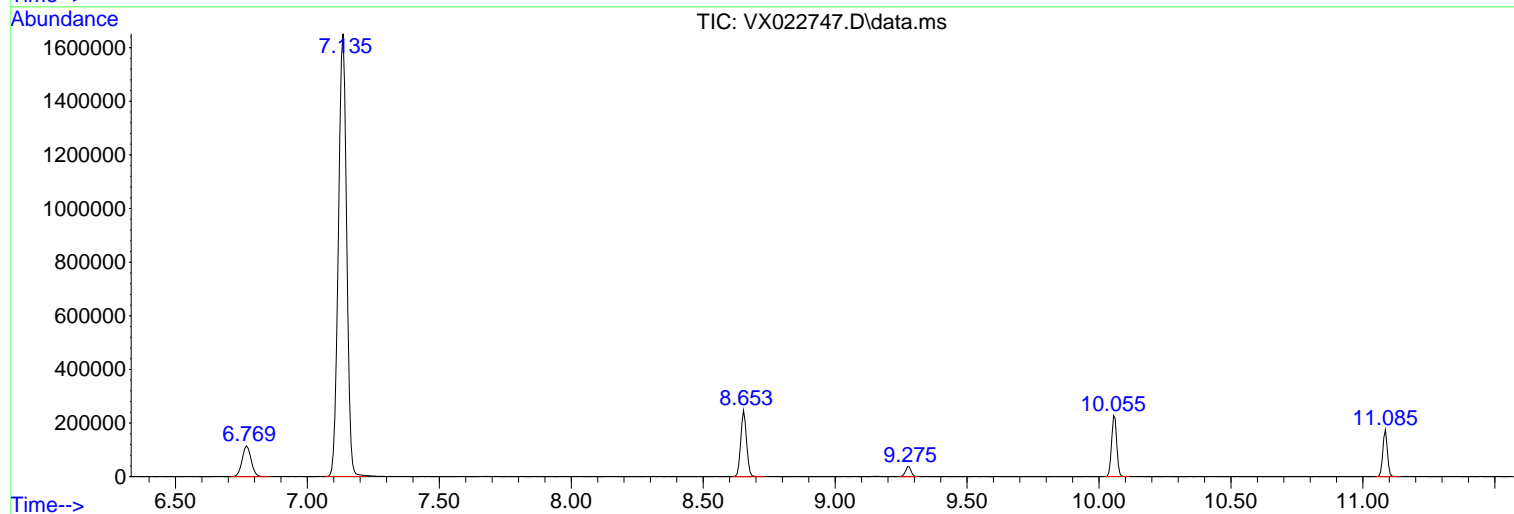
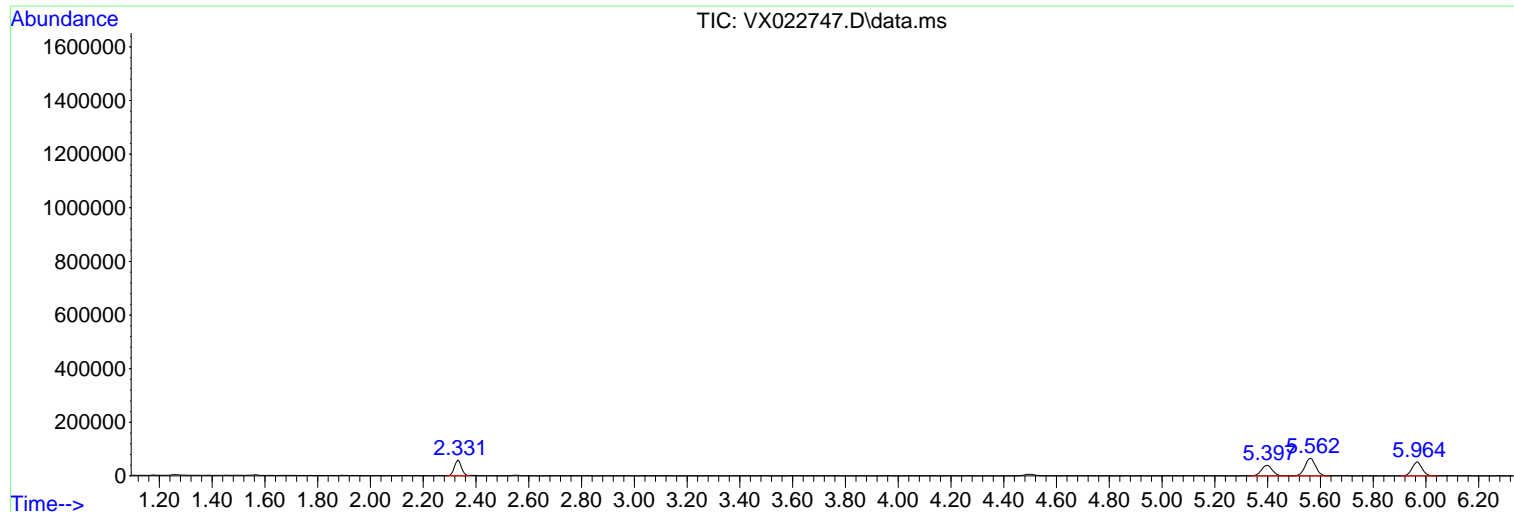
Sum of corrected areas: 5593188

Data Path : Z:\voasrv\HPCHEM1\MSVOA\_X\Data\VX061721\  
Data File : VX022747.D  
Acq On : 17 Jun 2021 17:49  
Operator : JC/MD  
Sample : M2750-09  
Misc : 5.0mL/MSVOA\_X/WATER  
ALS Vial : 23 Sample Multiplier: 1

Instrument :  
MSVOA\_X  
ClientSampleId :  
RE120D2-20210615

Quant Method : Z:\voasrv\HPCHEM1\MSVOA\_X\Method\82X061021W.M  
Quant Title : SW846 8260

TIC Library : C:\DATABASE\NIST11.L  
TIC Integration Parameters: LSCINT.P



Library Search Compound Report

Data Path : Z:\voasrv\HPCHEM1\MSVOA\_X\Data\VX061721\  
Data File : VX022747.D  
Acq On : 17 Jun 2021 17:49  
Operator : JC/MD  
Sample : M2750-09  
Misc : 5.0mL/MSVOA\_X/WATER  
ALS Vial : 23 Sample Multiplier: 1

Instrument :  
MSVOA\_X  
ClientSampleId :  
RE120D2-20210615

Quant Method : Z:\voasrv\HPCHEM1\MSVOA\_X\Method\82X061021W.M  
Quant Title : SW846 8260

TIC Library : C:\DATABASE\NIST11.L  
TIC Integration Parameters: LSCINT.P

No Library Search Compounds Detected

\*\*\*\*\*

Data Path : Z:\voasrv\HPCHEM1\MSVOA\_X\Data\VX061721\  
Data File : VX022747.D  
Acq On : 17 Jun 2021 17:49  
Operator : JC/MD  
Sample : M2750-09  
Misc : 5.0mL/MSVOA\_X/WATER  
ALS Vial : 23 Sample Multiplier: 1

Instrument :  
MSVOA\_X  
ClientSampleId :  
RE120D2-20210615

Quant Method : Z:\voasrv\HPCHEM1\MSVOA\_X\Method\82X061021W.M  
Quant Title : SW846 8260

TIC Library : C:\DATABASE\NIST11.L  
TIC Integration Parameters: LSCINT.P

TIC Top Hit name	RT	EstConc	Units	Response	--Internal Standard--			
					#	RT	Resp	Conc

---