

Data Path : Z:\VOASRV\HPCHEM1\MSVOA X\DATA\VX061819\  
 Data File : VX010337.D  
 Acq On : 18 Jun 2019 12:52  
 Operator : JC/SP  
 Sample : K3427-03  
 Misc : 5.0mL/MSVOA X/WATER  
 ALS Vial : 7 Sample Multiplier: 1

Instrument :  
 MSVOA\_X  
 ClientSampleId :

Quant Time: Jun 19 01:16:48 2019  
 Quant Method : Z:\VOASRV\HPCHEM1\MSVOA\_X\METHOD\82X060719W.M  
 Quant Title : SW846 8260  
 QLast Update : Sat Jun 08 02:12:13 2019  
 Response via : Initial Calibration

Internal Standards	R.T.	QIon	Response	Conc	Units	Dev(Min)
1) Pentafluorobenzene	5.67	168	318811	50.00	ug/l	0.00
34) 1,4-Difluorobenzene	6.86	114	482092	50.00	ug/l	0.00
63) Chlorobenzene-d5	10.11	117	435651	50.00	ug/l	0.00
72) 1,4-Dichlorobenzene-d4	12.08	152	203897	50.00	ug/l	0.00

## System Monitoring Compounds

33) 1,2-Dichloroethane-d4	6.06	65	144456	46.42	ug/l	0.00
Spiked Amount	50.000		Recovery	=	92.84%	
35) Dibromofluoromethane	5.50	113	145777	49.02	ug/l	0.00
Spiked Amount	50.000		Recovery	=	98.04%	
50) Toluene-d8	8.71	98	562736	50.49	ug/l	0.00
Spiked Amount	50.000		Recovery	=	100.98%	
62) 4-Bromofluorobenzene	11.13	95	191795	46.08	ug/l	0.00
Spiked Amount	50.000		Recovery	=	92.16%	

## Target Compounds

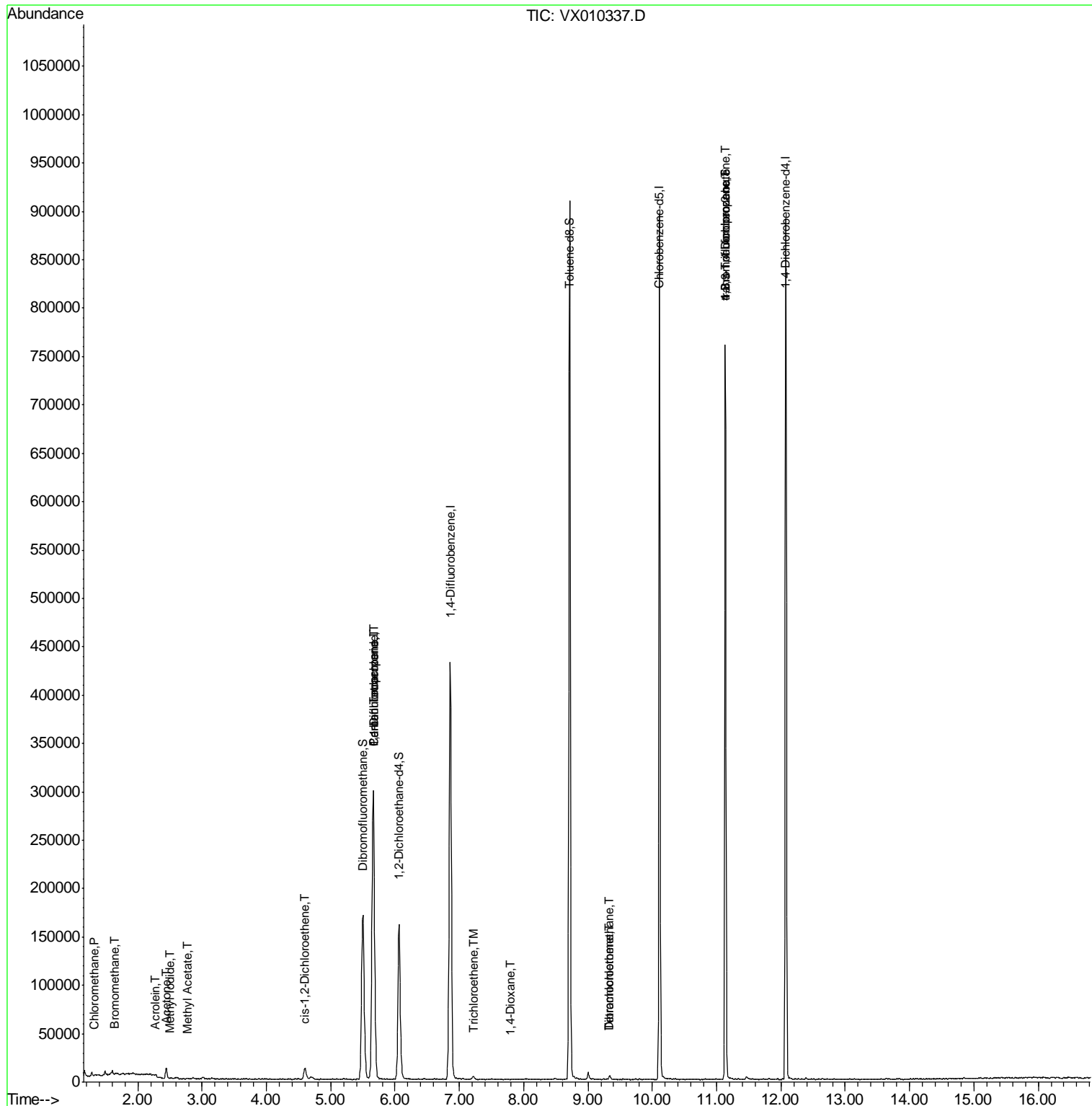
						Qvalue
3) Chloromethane	1.33	50	745	0.256	ug/l	96
5) Bromomethane	1.65	94	748	0.724	ug/l #	58
10) Methyl Iodide	2.51	142	1314	0.302	ug/l #	93
13) Acrolein	2.28	56	298	2.144	ug/l #	64
16) Acetone	2.45	43	11293	7.715	ug/l	91
18) Methyl Acetate	2.77	43	760	0.236	ug/l #	86
27) cis-1,2-Dichloroethene	4.60	96	7535	2.137	ug/l	71
36) 1,1-Dichloropropene	5.66	75	18918	4.810	ug/l #	52
38) Carbon Tetrachloride	5.67	117	27538	6.186	ug/l #	15
44) Trichloroethene	7.21	130	1348	0.368	ug/l	84
49) 1,4-Dioxane	7.81	88	50	0.548	ug/l #	1
60) Dibromochloromethane	9.33	129	923	0.238	ug/l #	11
64) Tetrachloroethene	9.34	164	913	0.282	ug/l #	84
76) 1,2,3-Trichloropropane	11.13	75	87462	21.446	ug/l #	34
81) trans-1,4-Dichloro-2-buten	11.13	75	87462	47.382	ug/l #	10

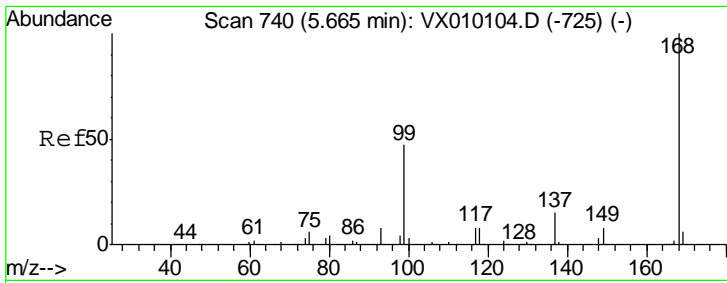
(#) = qualifier out of range (m) = manual integration (+) = signals summed

Data Path : Z:\VOASRV\HPCHEM1\MSVOA X\DATA\VX061819\  
 Data File : VX010337.D  
 Acq On : 18 Jun 2019 12:52  
 Operator : JC/SP  
 Sample : K3427-03  
 Misc : 5.0mL/MSVOA X/WATER  
 ALS Vial : 7 Sample Multiplier: 1

Instrument :  
 MSVOA\_X  
 ClientSampled :

Quant Time: Jun 19 01:16:48 2019  
 Quant Method : Z:\VOASRV\HPCHEM1\MSVOA\_X\METHOD\82X060719W.M  
 Quant Title : SW846 8260  
 QLast Update : Sat Jun 08 02:12:13 2019  
 Response via : Initial Calibration

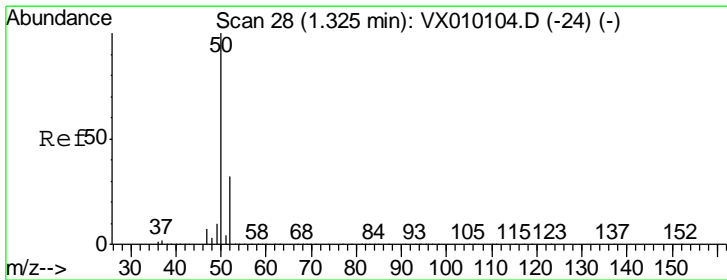
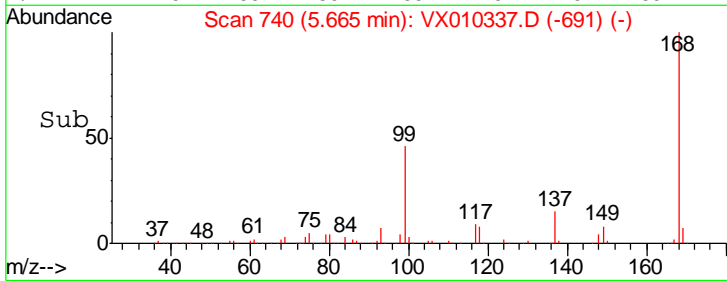
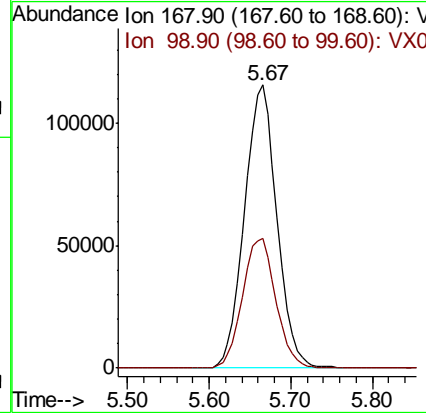
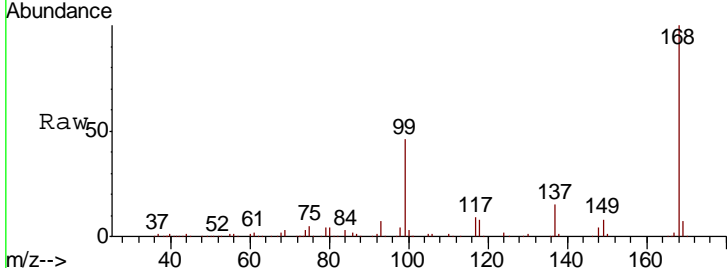




#1  
 Pentafluorobenzene  
 Concen: 50.000 ug/l  
 RT: 5.67 min Scan# 740  
 Delta R.T. -0.00 min  
 Lab File: VX010337.D  
 Acq: 18 Jun 2019 12:52

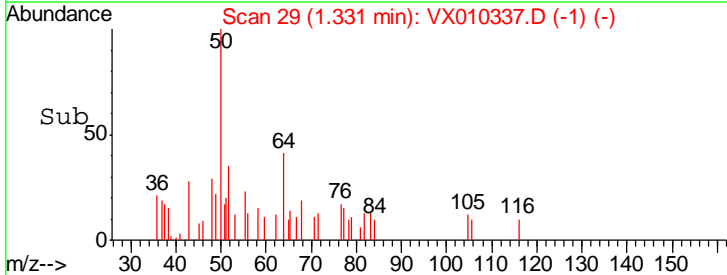
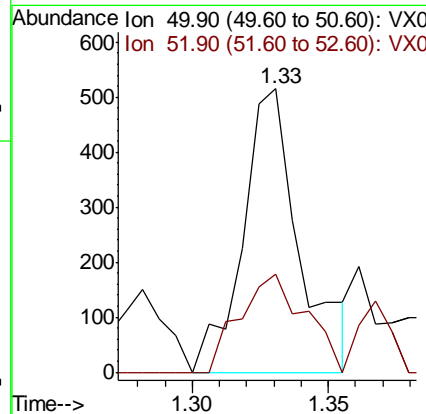
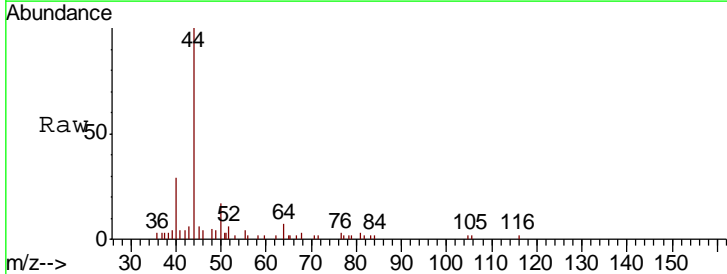
Instrument :  
 MSVOA\_X  
 ClientSampled :

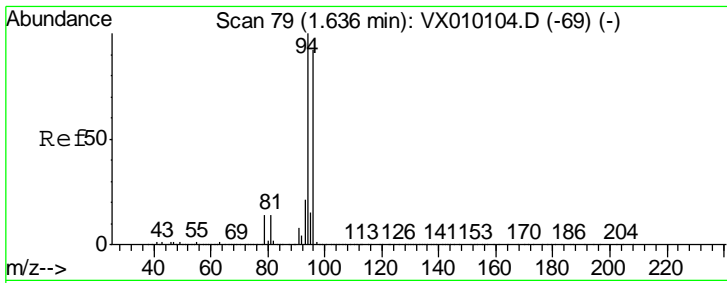
Tgt Ion	Resp	Lower	Upper
168	100		
99	45.7	43.0	64.6



#3  
 Chloromethane  
 Concen: 0.256 ug/l  
 RT: 1.33 min Scan# 29  
 Delta R.T. 0.01 min  
 Lab File: VX010337.D  
 Acq: 18 Jun 2019 12:52

Tgt Ion	Resp	Lower	Upper
50	100		
52	34.6	26.0	39.0

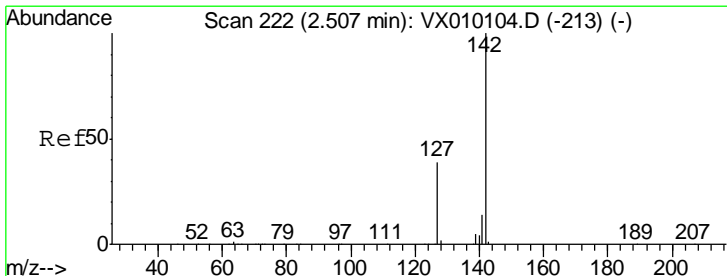
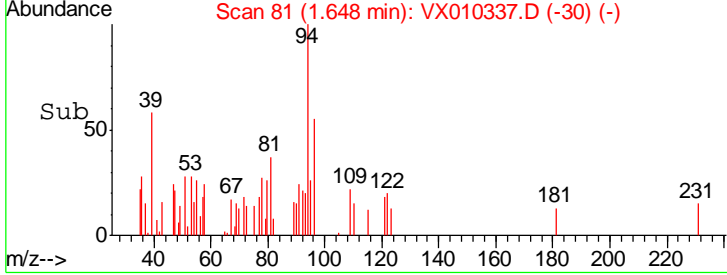
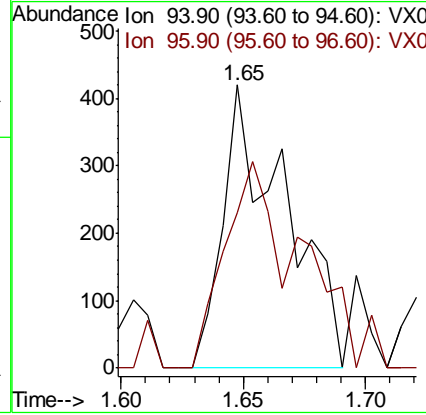
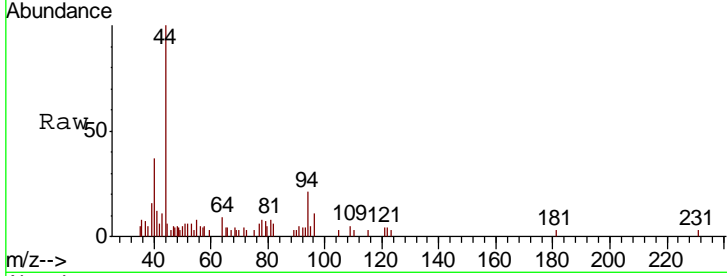




#5  
 Bromomethane  
 Concen: 0.724 ug/l  
 RT: 1.65 min Scan# 81  
 Delta R.T. 0.01 min  
 Lab File: VX010337.D  
 Acq: 18 Jun 2019 12:52

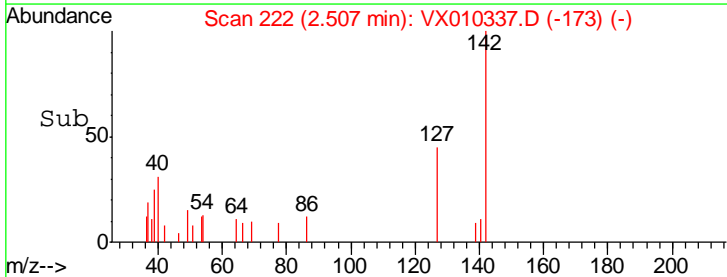
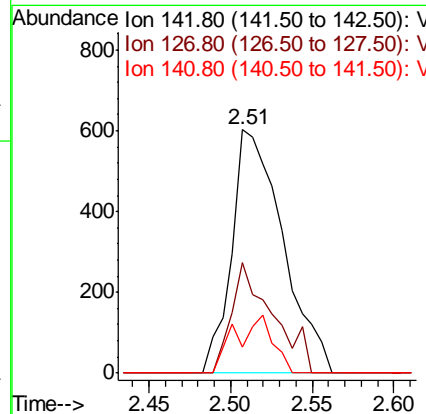
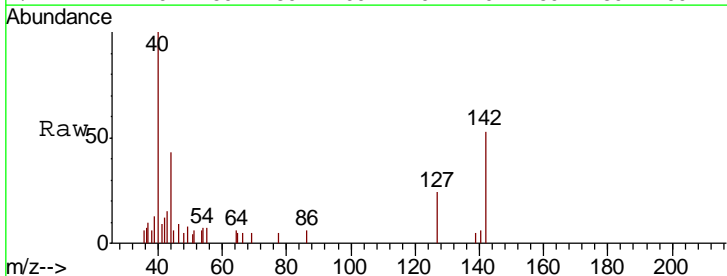
Instrument :  
 MSVOA\_X  
 ClientSampled :

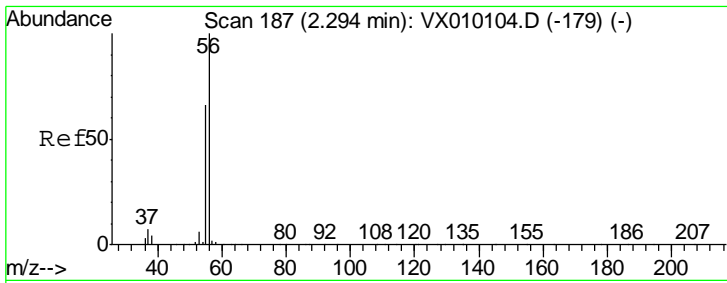
Tgt Ion: 94 Resp: 748  
 Ion Ratio Lower Upper  
 94 100  
 96 54.8 76.2 114.4#



#10  
 Methyl Iodide  
 Concen: 0.302 ug/l  
 RT: 2.51 min Scan# 222  
 Delta R.T. -0.00 min  
 Lab File: VX010337.D  
 Acq: 18 Jun 2019 12:52

Tgt Ion: 142 Resp: 1314  
 Ion Ratio Lower Upper  
 142 100  
 127 36.8 33.0 49.4  
 141 17.7 11.4 17.0#

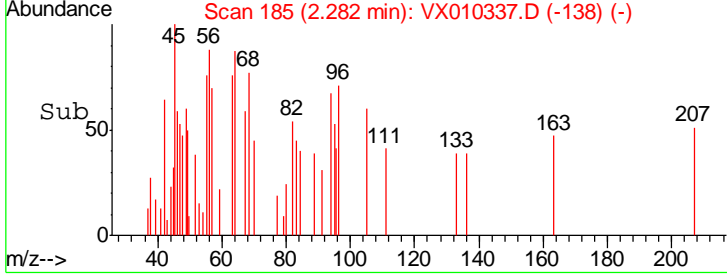
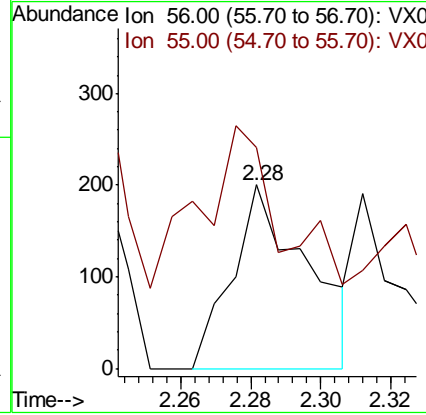
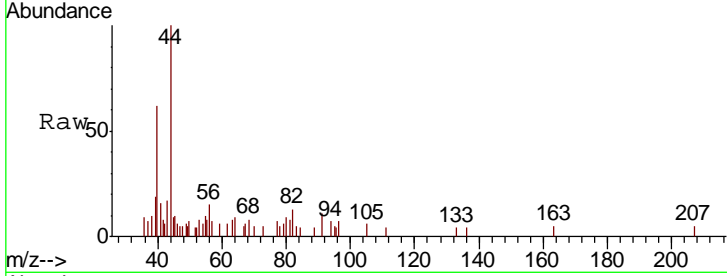




#13  
 Acrolein  
 Concen: 2.144 ug/l  
 RT: 2.28 min Scan# 185  
 Delta R.T. -0.01 min  
 Lab File: VX010337.D  
 Acq: 18 Jun 2019 12:52

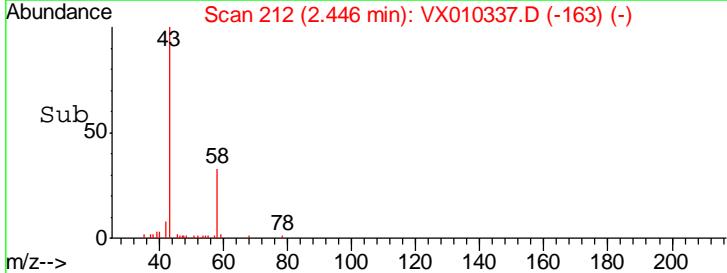
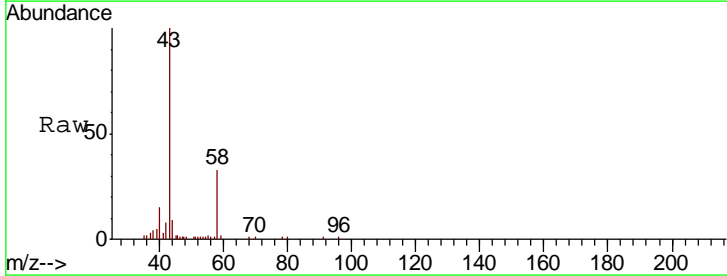
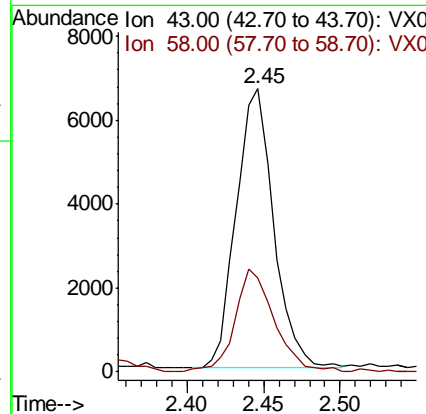
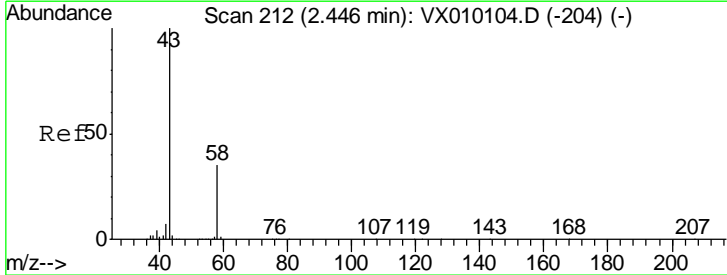
Instrument :  
 MSVOA\_X  
 ClientSampled :

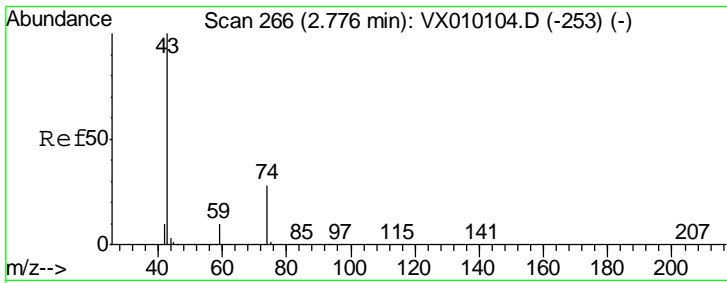
Tgt Ion: 56 Resp: 298  
 Ion Ratio Lower Upper  
 56 100  
 55 101.3 57.0 85.4#



#16  
 Acetone  
 Concen: 7.715 ug/l  
 RT: 2.45 min Scan# 212  
 Delta R.T. -0.00 min  
 Lab File: VX010337.D  
 Acq: 18 Jun 2019 12:52

Tgt Ion: 43 Resp: 11293  
 Ion Ratio Lower Upper  
 43 100  
 58 33.7 23.2 34.8

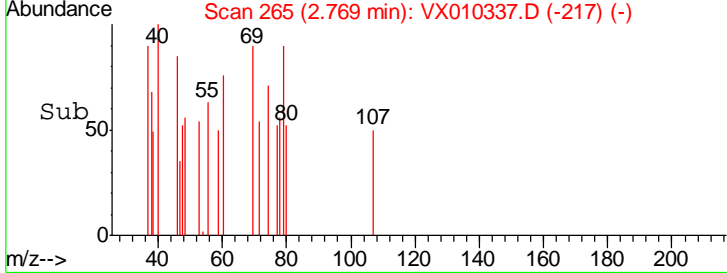
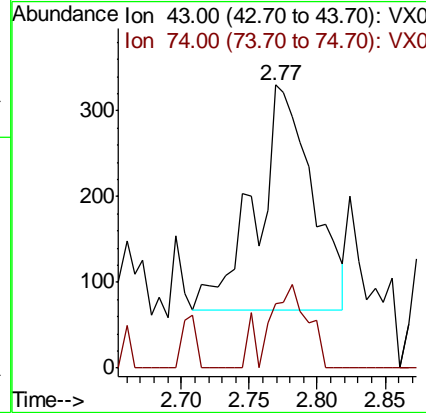
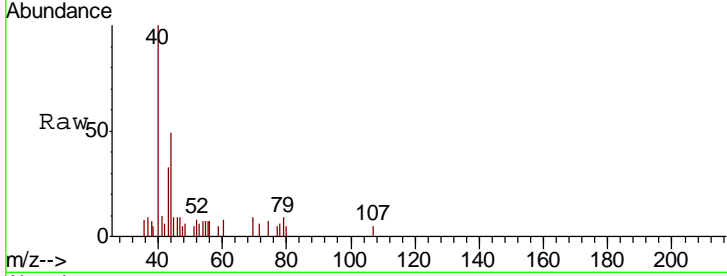




#18  
 Methyl Acetate  
 Concen: 0.236 ug/l  
 RT: 2.77 min Scan# 265  
 Delta R.T. -0.01 min  
 Lab File: VX010337.D  
 Acq: 18 Jun 2019 12:52

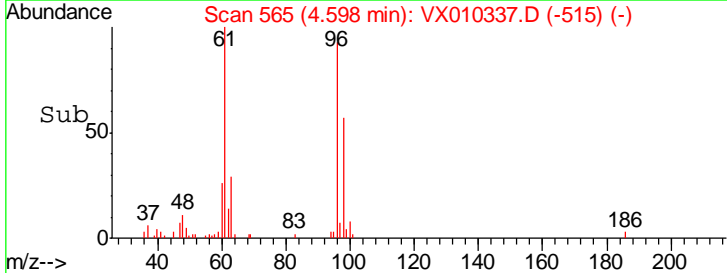
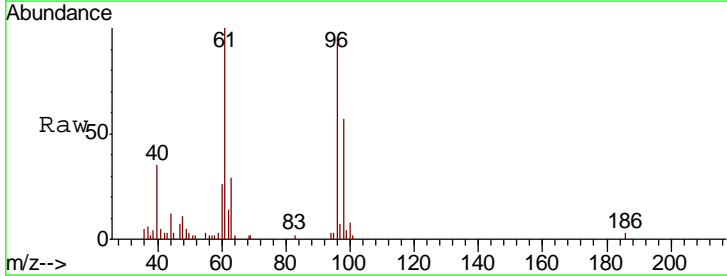
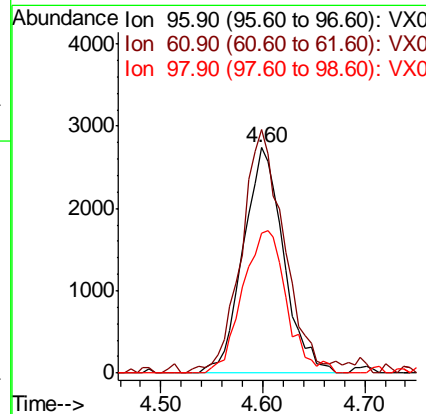
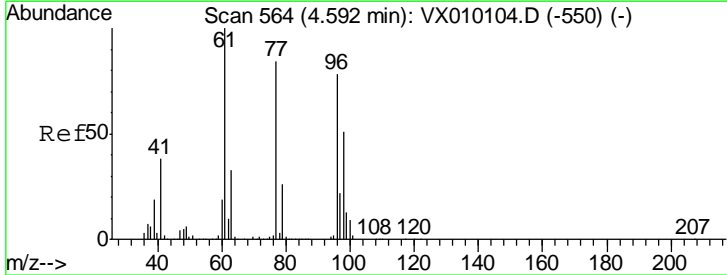
Instrument :  
 MSVOA\_X  
 ClientSampled :

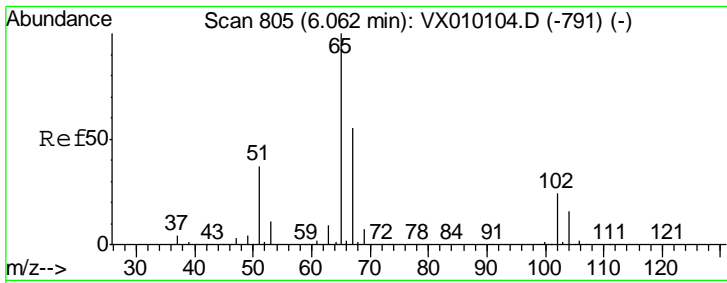
Tgt Ion	Resp	Lower	Upper
43	100		
74	25.9	15.8	23.6#



#27  
 cis-1,2-Dichloroethene  
 Concen: 2.137 ug/l  
 RT: 4.60 min Scan# 565  
 Delta R.T. 0.01 min  
 Lab File: VX010337.D  
 Acq: 18 Jun 2019 12:52

Tgt Ion	Resp	Lower	Upper
96	100		
61	113.7	0.0	334.0
98	68.9	0.0	131.6

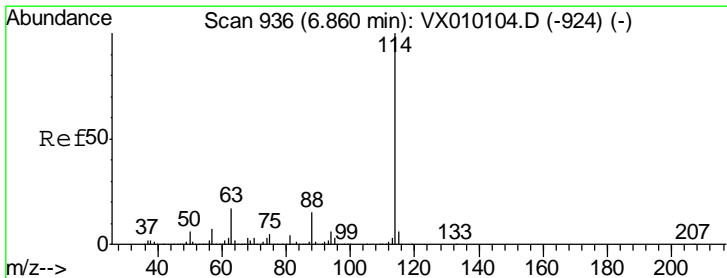
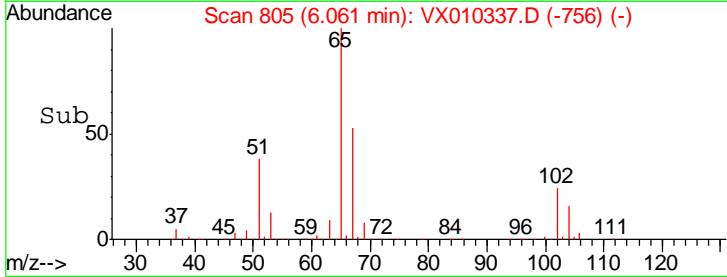
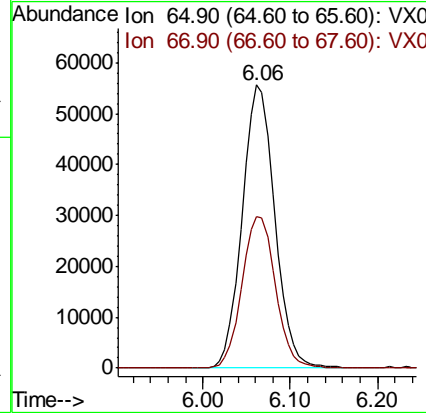
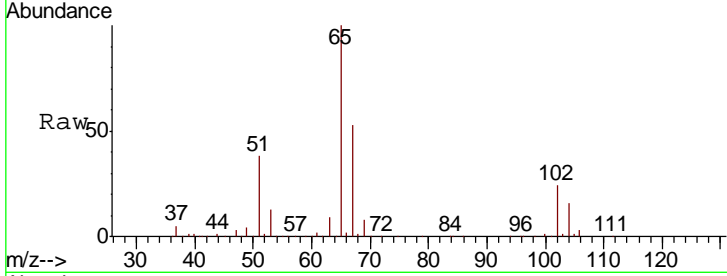




#33  
 1,2-Dichloroethane-d4  
 Concen: 46.420 ug/l  
 RT: 6.06 min Scan# 805  
 Delta R.T. 0.00 min  
 Lab File: VX010337.D  
 Acq: 18 Jun 2019 12:52

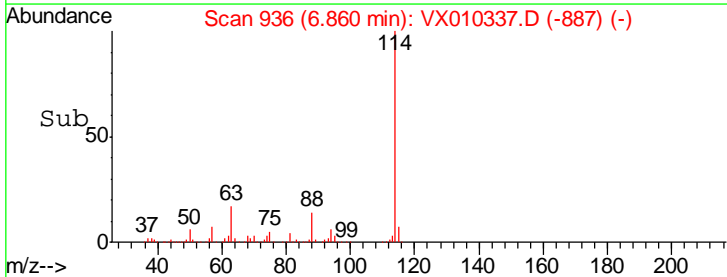
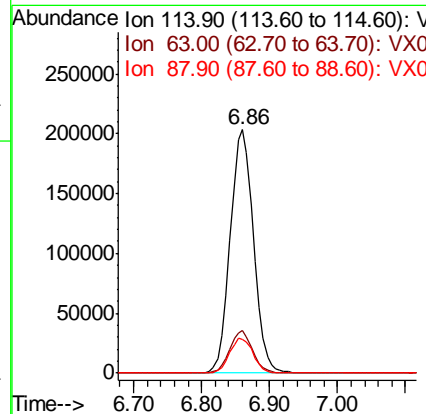
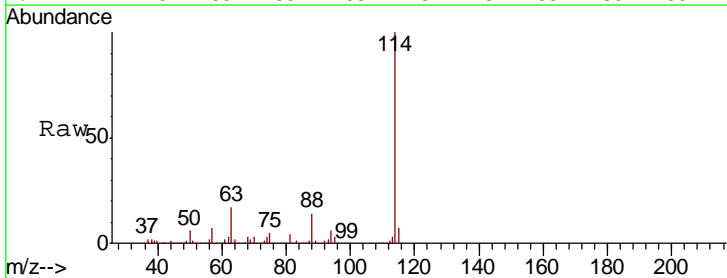
Instrument :  
 MSVOA\_X  
 ClientSampled :

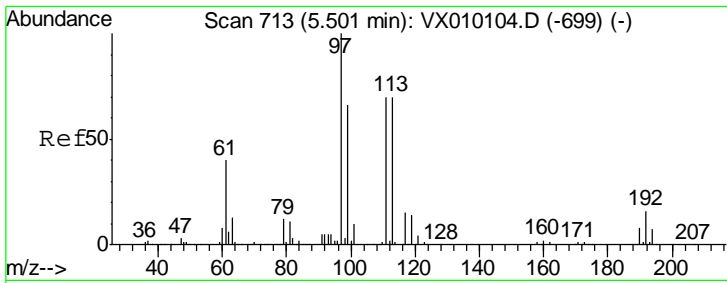
Tot Ion: 65 Resp: 144456  
 Ion Ratio Lower Upper  
 65 100  
 67 55.0 0.0 108.4



#34  
 1,4-Difluorobenzene  
 Concen: 50.000 ug/l  
 RT: 6.86 min Scan# 936  
 Delta R.T. -0.00 min  
 Lab File: VX010337.D  
 Acq: 18 Jun 2019 12:52

Tgt Ion: 114 Resp: 482092  
 Ion Ratio Lower Upper  
 114 100  
 63 17.3 0.0 47.4  
 88 14.0 0.0 33.0

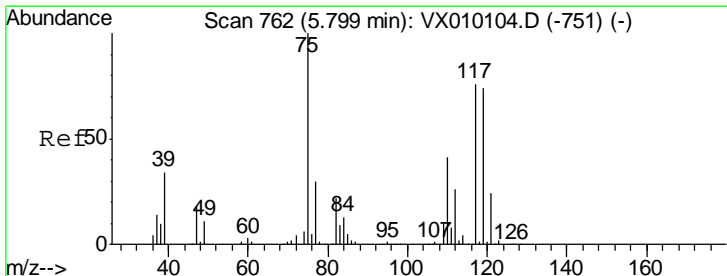
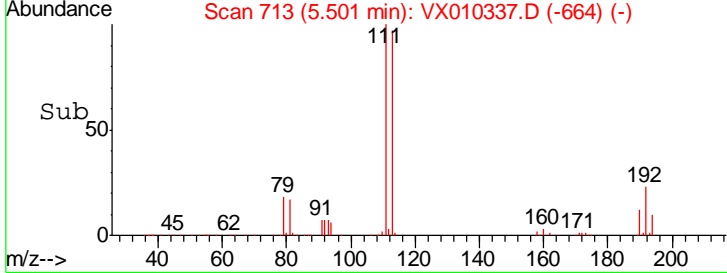
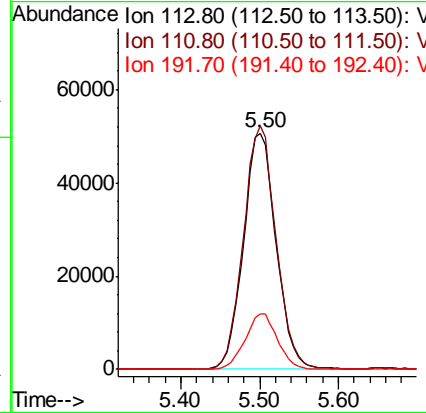
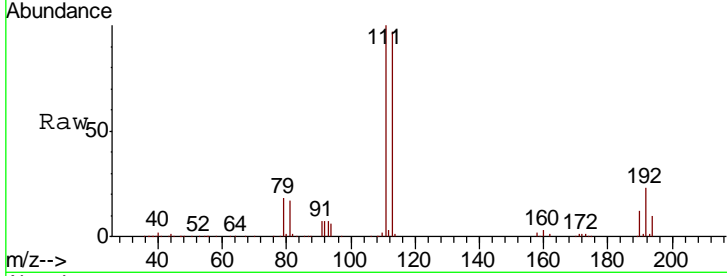




#35  
 Dibromofluoromethane  
 Concen: 49.023 ug/l  
 RT: 5.50 min Scan# 713  
 Delta R.T. -0.00 min  
 Lab File: VX010337.D  
 Acq: 18 Jun 2019 12:52

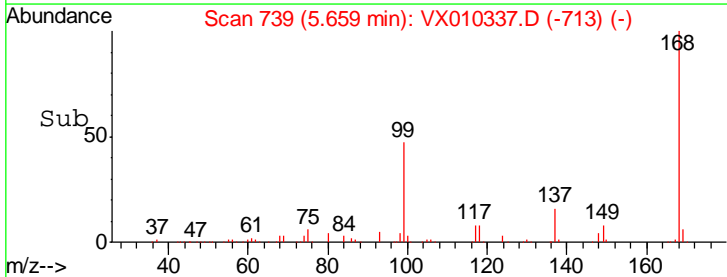
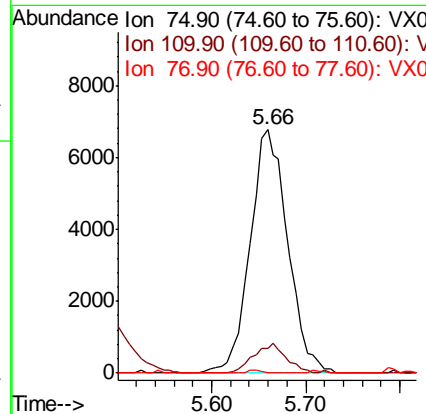
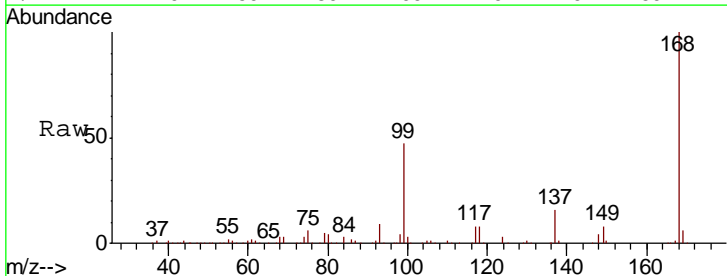
Instrument :  
 MSVOA\_X  
 ClientSampled :

Tgt Ion	Resp	Lower	Upper
113	145777		
111	103.2	82.2	123.2
192	23.2	17.1	25.7

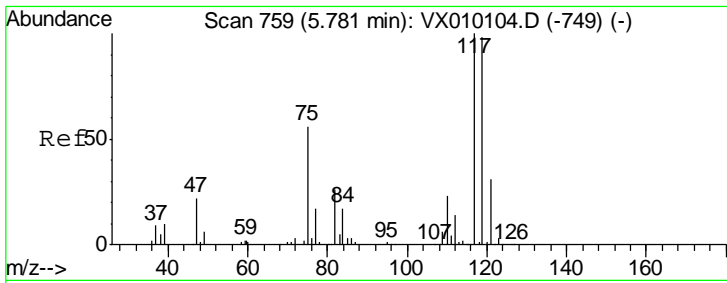


#36  
 1,1-Dichloropropene  
 Concen: 4.810 ug/l  
 RT: 5.66 min Scan# 739  
 Delta R.T. -0.14 min  
 Lab File: VX010337.D  
 Acq: 18 Jun 2019 12:52

Tgt Ion	Resp	Lower	Upper
75	18918		
110	10.8	16.7	50.1#
77	0.4	25.0	37.4#



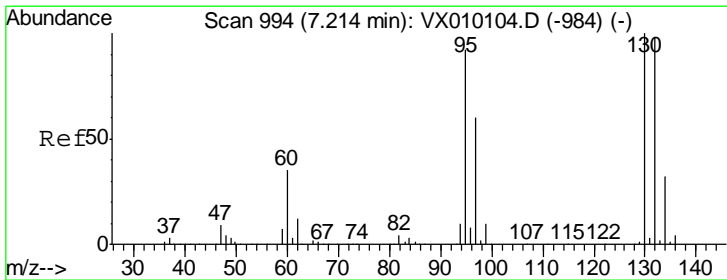
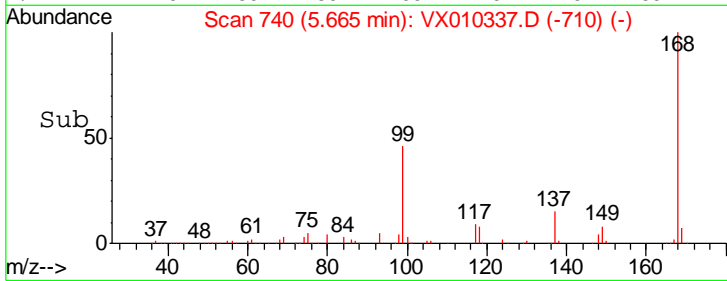
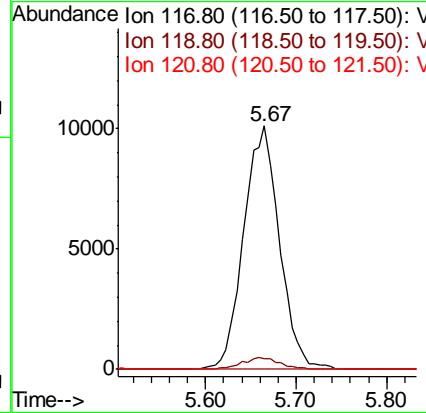
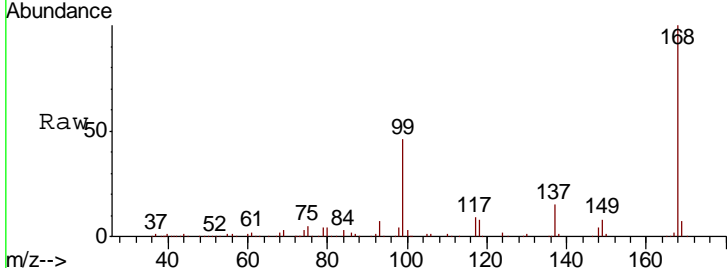




#38  
 Carbon Tetrachloride  
 Concen: 6.186 ug/l  
 RT: 5.67 min Scan# 740  
 Delta R.T. -0.12 min  
 Lab File: VX010337.D  
 Acq: 18 Jun 2019 12:52

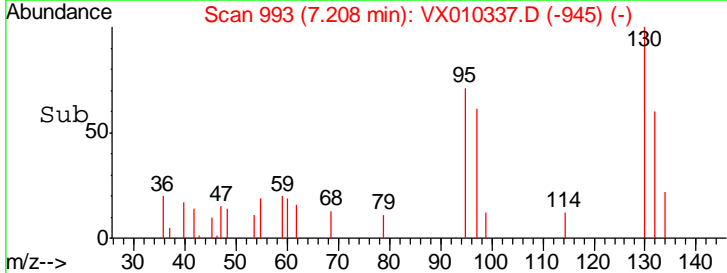
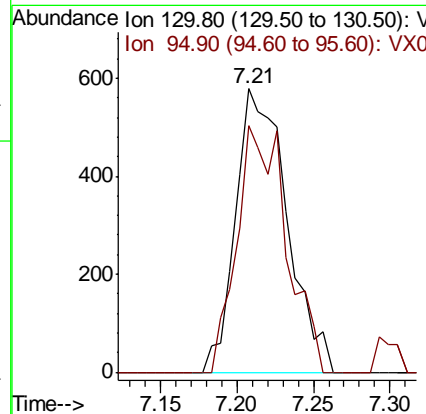
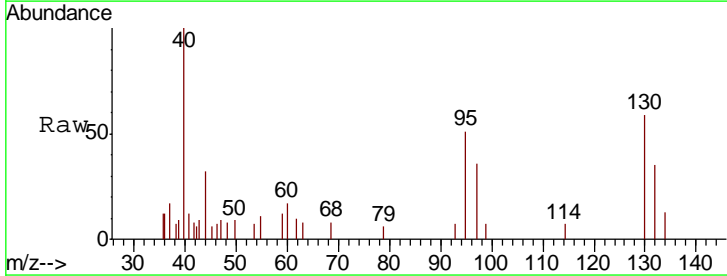
Instrument :  
 MSVOA\_X  
 ClientSampled :

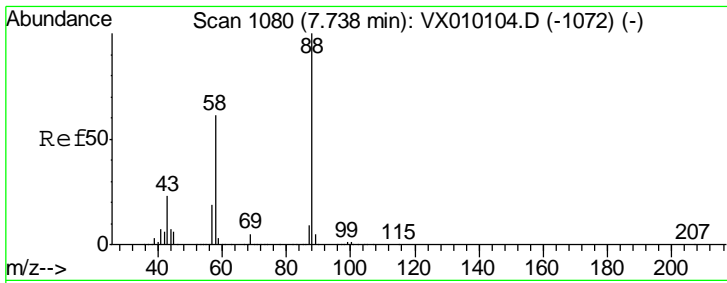
Tgt Ion	Resp	Lower	Upper
117	27538		
119	4.2	77.3	115.9#
121	0.0	25.4	38.0#



#44  
 Trichloroethene  
 Concen: 0.368 ug/l  
 RT: 7.21 min Scan# 993  
 Delta R.T. -0.01 min  
 Lab File: VX010337.D  
 Acq: 18 Jun 2019 12:52

Tgt Ion	Resp	Lower	Upper
130	1348		
130	100		
95	87.0	0.0	207.4

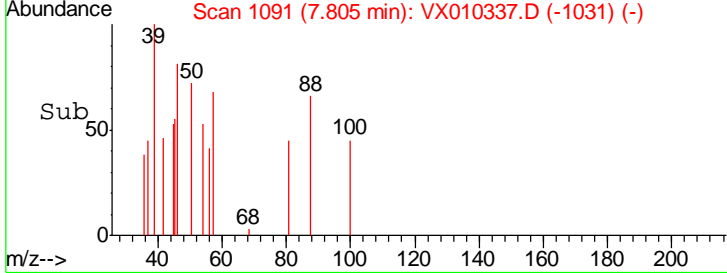
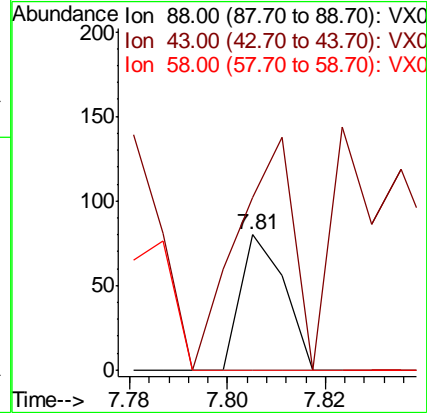
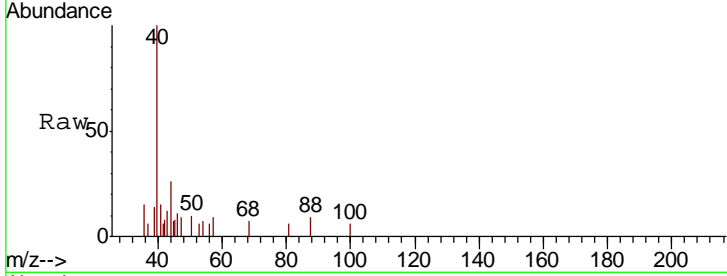




#49  
 1,4-Dioxane  
 Concen: 0.548 ug/l  
 RT: 7.81 min Scan# 1091  
 Delta R.T. 0.07 min  
 Lab File: VX010337.D  
 Acq: 18 Jun 2019 12:52

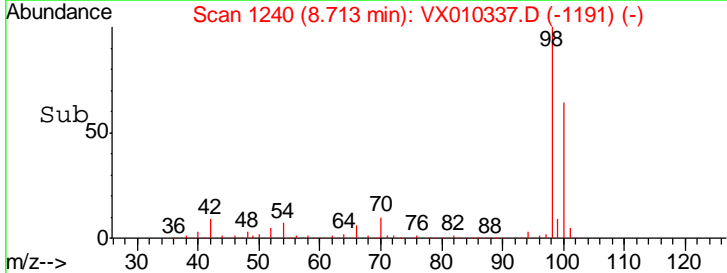
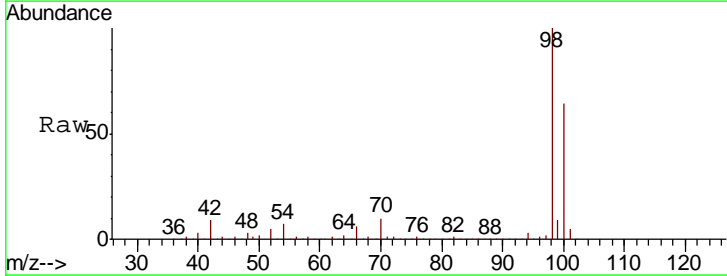
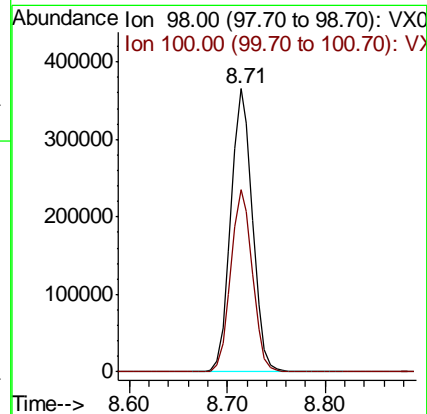
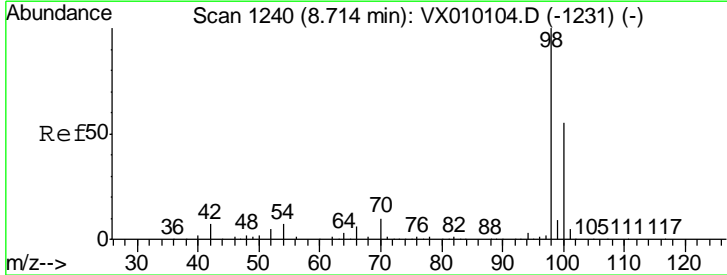
Instrument :  
 MSVOA\_X  
 ClientSampled :

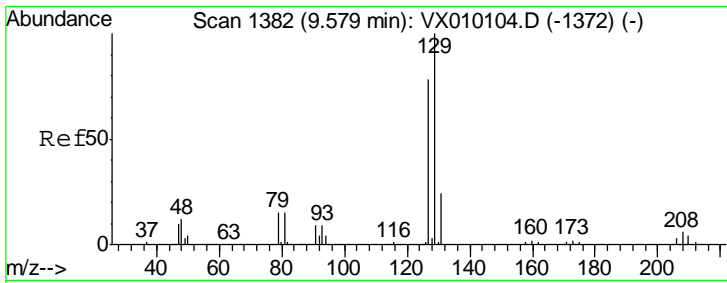
Tgt Ion	Resp	Lower	Upper
88	100		
43	220.0	30.2	45.4#
58	0.0	64.0	96.0#



#50  
 Toluene-d8  
 Concen: 50.493 ug/l  
 RT: 8.71 min Scan# 1240  
 Delta R.T. 0.00 min  
 Lab File: VX010337.D  
 Acq: 18 Jun 2019 12:52

Tgt Ion	Resp	Lower	Upper
98	100		
100	64.4	51.5	77.3

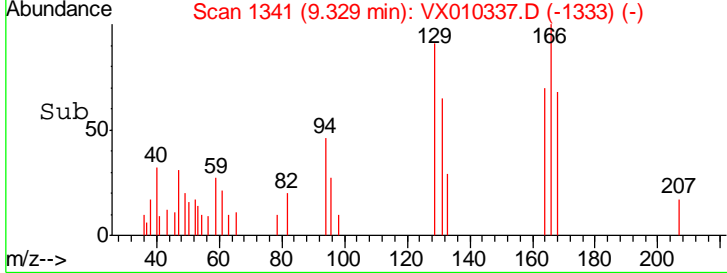
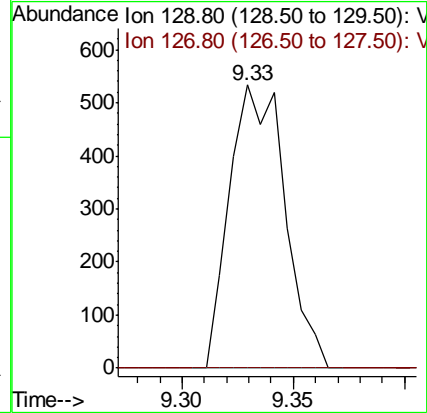
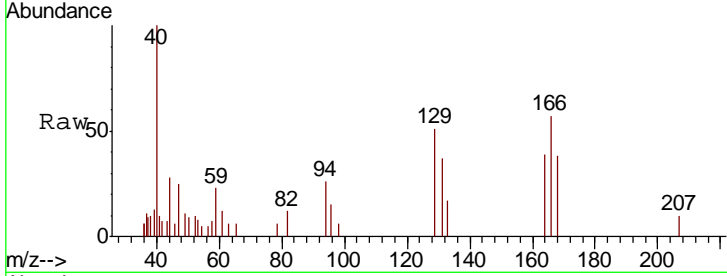




#60  
 Dibromochloromethane  
 Concen: 0.238 ug/l  
 RT: 9.33 min Scan# 1341  
 Delta R.T. -0.25 min  
 Lab File: VX010337.D  
 Acq: 18 Jun 2019 12:52

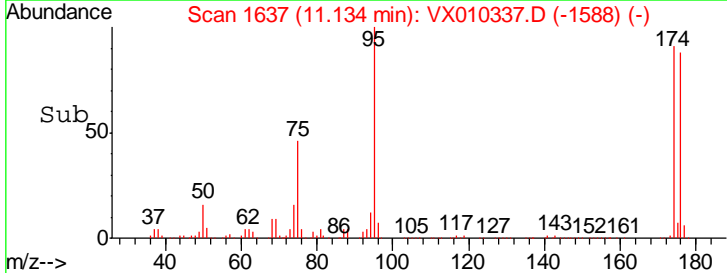
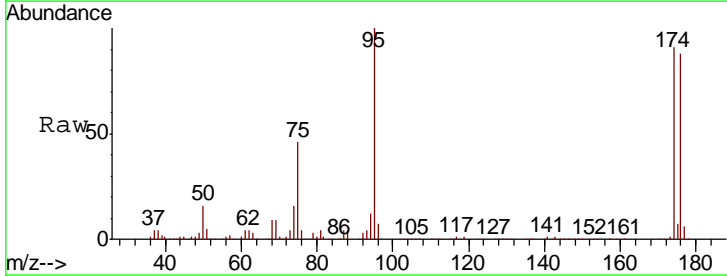
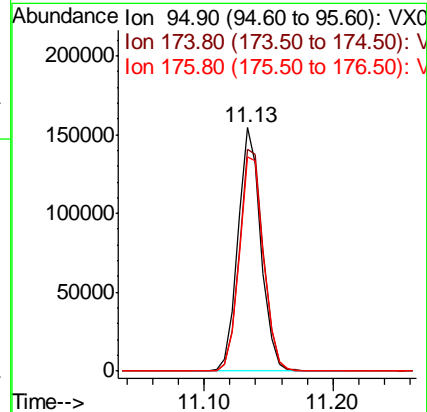
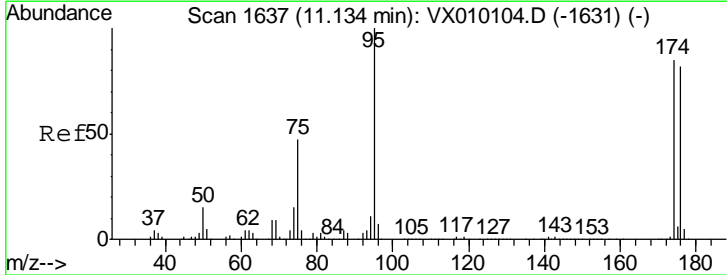
Instrument :  
 MSVOA\_X  
 ClientSampled :

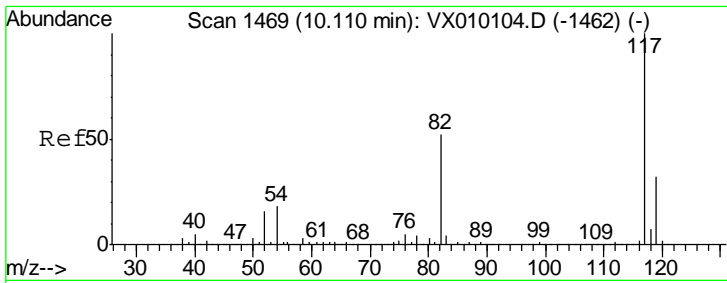
Tgt Ion: 129 Resp: 923  
 Ion Ratio Lower Upper  
 129 100  
 127 0.0 38.5 115.5#



#62  
 4-Bromofluorobenzene  
 Concen: 46.081 ug/l  
 RT: 11.13 min Scan# 1637  
 Delta R.T. 0.00 min  
 Lab File: VX010337.D  
 Acq: 18 Jun 2019 12:52

Tgt Ion: 95 Resp: 191795  
 Ion Ratio Lower Upper  
 95 100  
 174 95.9 0.0 160.4  
 176 92.7 0.0 154.6

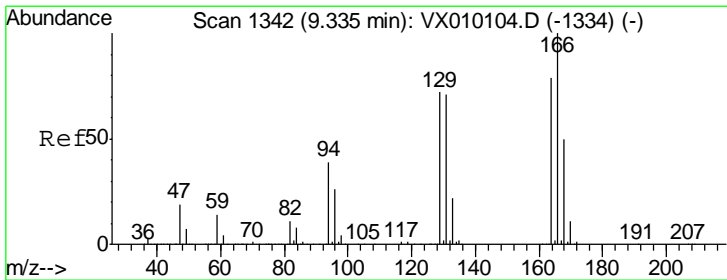
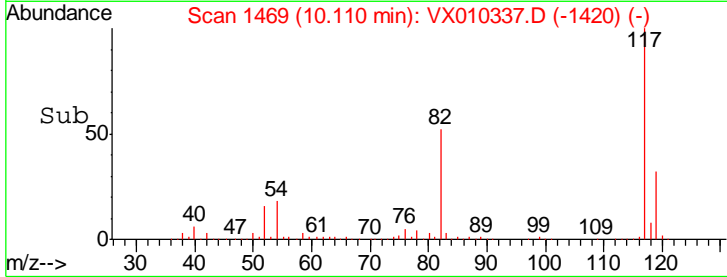
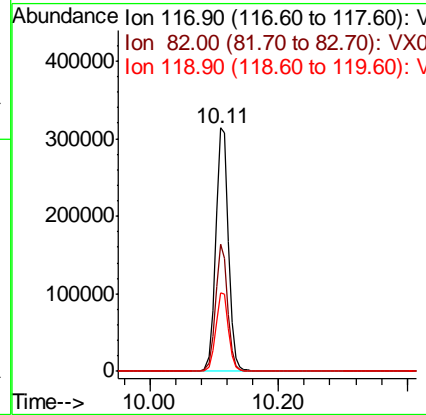
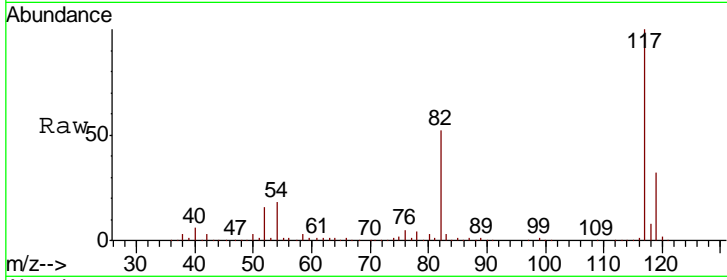




#63  
 Chlorobenzene-d5  
 Concen: 50.000 ug/l  
 RT: 10.11 min Scan# 1469  
 Delta R.T. -0.00 min  
 Lab File: VX010337.D  
 Acq: 18 Jun 2019 12:52

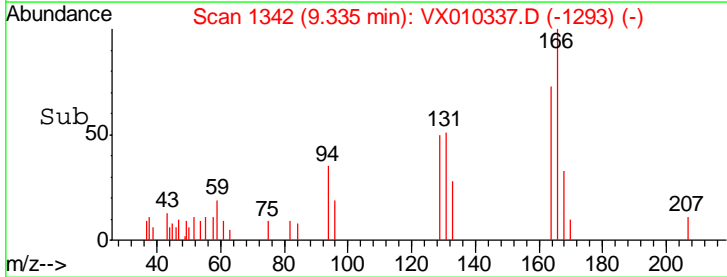
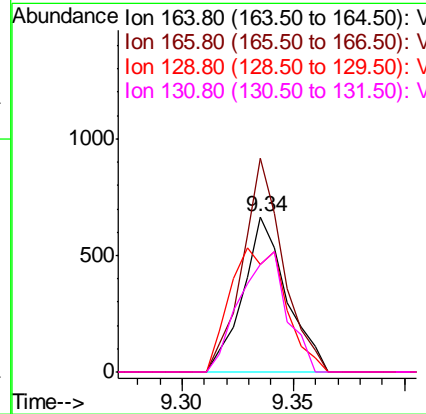
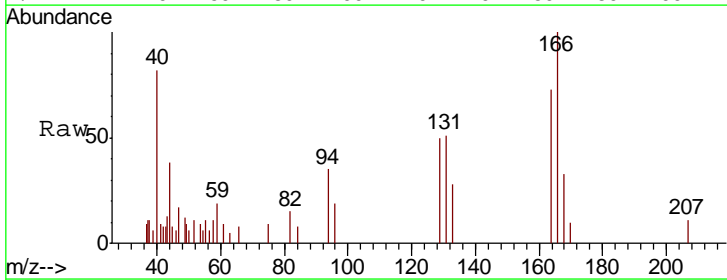
Instrument :  
 MSVOA\_X  
 ClientSampled :

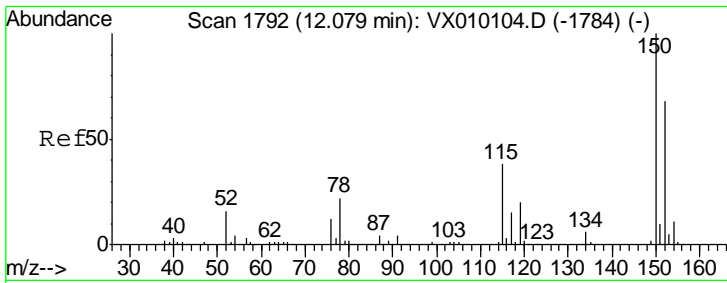
Tgt Ion	Resp	Lower	Upper
117	435651		
82	52.4	49.2	73.8
119	32.3	25.2	37.8



#64  
 Tetrachloroethene  
 Concen: 0.282 ug/l  
 RT: 9.34 min Scan# 1342  
 Delta R.T. -0.00 min  
 Lab File: VX010337.D  
 Acq: 18 Jun 2019 12:52

Tgt Ion	Resp	Lower	Upper
164	913		
166	137.7	105.0	157.4
129	69.2	75.1	112.7#
131	69.6	72.2	108.4#

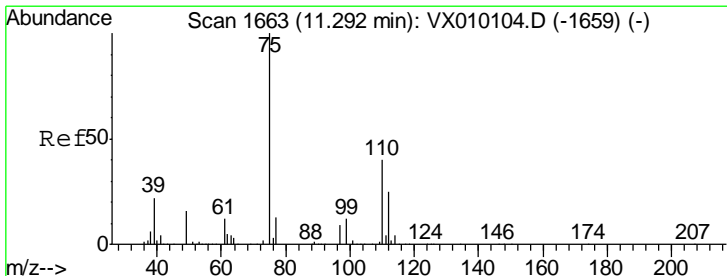
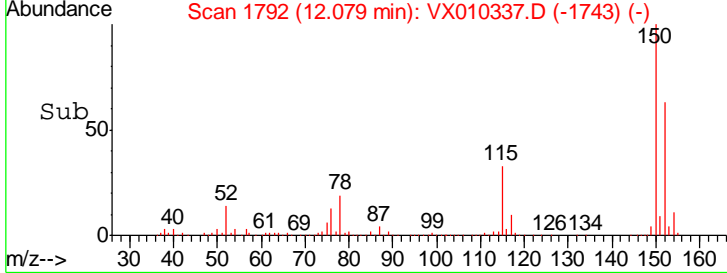
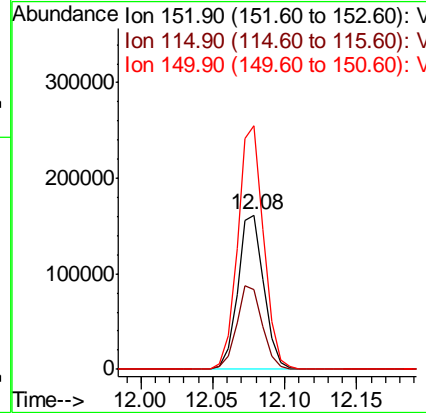
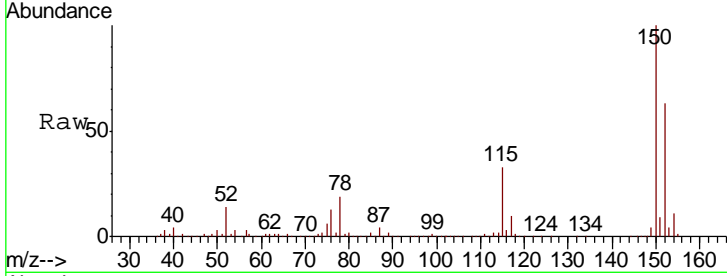




#72  
 1,4-Dichlorobenzene-d4  
 Concen: 50.000 ug/l  
 RT: 12.08 min Scan# 1792  
 Delta R.T. -0.00 min  
 Lab File: VX010337.D  
 Acq: 18 Jun 2019 12:52

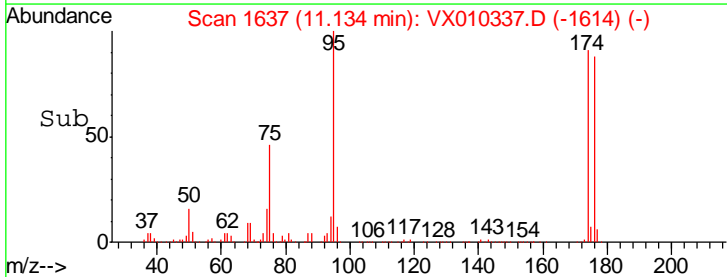
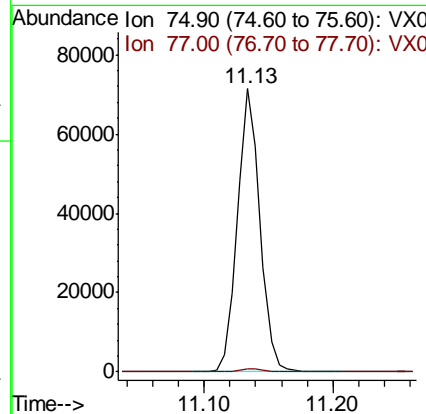
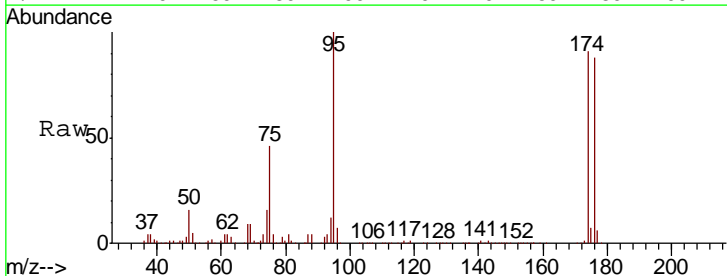
Instrument : MSVOA\_X  
 ClientSampled :

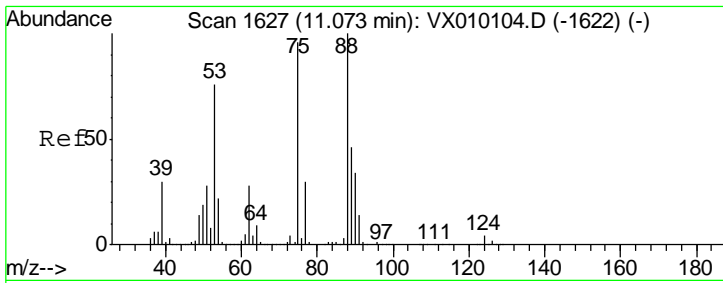
Tgt Ion	Resp	Lower	Upper
152	100		
115	53.8	41.4	124.2
150	157.4	0.0	345.2



#76  
 1,2,3-Trichloropropane  
 Concen: 21.446 ug/l  
 RT: 11.13 min Scan# 1637  
 Delta R.T. -0.16 min  
 Lab File: VX010337.D  
 Acq: 18 Jun 2019 12:52

Tgt Ion	Resp	Lower	Upper
75	100		
77	1.1	22.1	66.1#

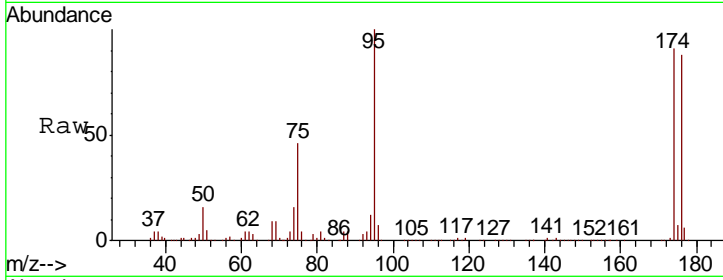




#81  
 trans-1,4-Dichloro-2-butene  
 Concen: 47.382 ug/l  
 RT: 11.13 min Scan# 1637  
 Delta R.T. 0.06 min  
 Lab File: VX010337.D  
 Acq: 18 Jun 2019 12:52

Instrument : MSVOA\_X  
 ClientSampled :

Tot Ion	Resp	Lower	Upper
75	100		
53	0.1	79.8	119.6#
89	0.0	34.2	51.4#



Abundance Ion 74.90 (74.60 to 75.60): VX0  
 Ion 53.00 (52.70 to 53.70): VX0  
 Ion 88.90 (88.60 to 89.60): VX0

