

Data Path : Z:\voasrv\HPCHEM1\MSVOA_X\Data\VX061821\
 Data File : VX022772.D
 Acq On : 18 Jun 2021 17:22
 Operator : JC/MD
 Sample : M2773-15
 Misc : 5.0mL/MSVOA_X/WATER
 ALS Vial : 20 Sample Multiplier: 1

Instrument :
 MSVOA_X
 ClientSampled :
 FB

Integration Parameters: RTEINT.P
 Integrator: RTE
 Smoothing : ON Filtering: 5
 Sampling : 1 Min Area: 3 % of largest Peak
 Start Thrs: 0.2 Max Peaks: 100
 Stop Thrs : 0 Peak Location: TOP

If leading or trailing edge < 100 prefer < Baseline drop else tangent >
 Peak separation: 5

Method : Z:\voasrv\HPCHEM1\MSVOA_X\Method\82X061021W.M
 Title : SW846 8260

Signal : TIC: VX022772.D\data.ms

| peak # | R.T. min | first scan | max scan | last scan | PK TY | peak height | corr. area | corr. % max. | % of total |
|--------|----------|------------|----------|-----------|-------|-------------|------------|--------------|------------|
| 1 | 1.569 | 73 | 79 | 81 | rVB3 | 2703 | 4175 | 1.06% | 0.214% |
| 2 | 2.386 | 206 | 213 | 219 | rBV | 8316 | 13074 | 3.32% | 0.670% |
| 3 | 2.544 | 235 | 239 | 247 | rVB | 2623 | 4823 | 1.22% | 0.247% |
| 4 | 2.953 | 298 | 306 | 312 | rBV | 6755 | 15481 | 3.93% | 0.793% |
| 5 | 4.587 | 566 | 574 | 589 | rBV2 | 7877 | 24405 | 6.19% | 1.250% |
| 6 | 5.397 | 696 | 707 | 721 | rBV2 | 42614 | 121628 | 30.85% | 6.232% |
| 7 | 5.562 | 721 | 734 | 746 | rBV | 65384 | 177872 | 45.12% | 9.113% |
| 8 | 5.970 | 788 | 801 | 812 | rBV2 | 55014 | 146479 | 37.15% | 7.505% |
| 9 | 6.769 | 923 | 932 | 945 | rBV | 110792 | 262347 | 66.54% | 13.442% |
| 10 | 8.653 | 1234 | 1241 | 1252 | rBV | 254449 | 394240 | 100.00% | 20.199% |
| 11 | 10.055 | 1466 | 1471 | 1479 | rBV | 227993 | 311939 | 79.12% | 15.983% |
| 12 | 11.085 | 1634 | 1640 | 1649 | rVB | 182417 | 226175 | 57.37% | 11.588% |
| 13 | 12.024 | 1789 | 1794 | 1800 | rBV | 205792 | 249107 | 63.19% | 12.763% |

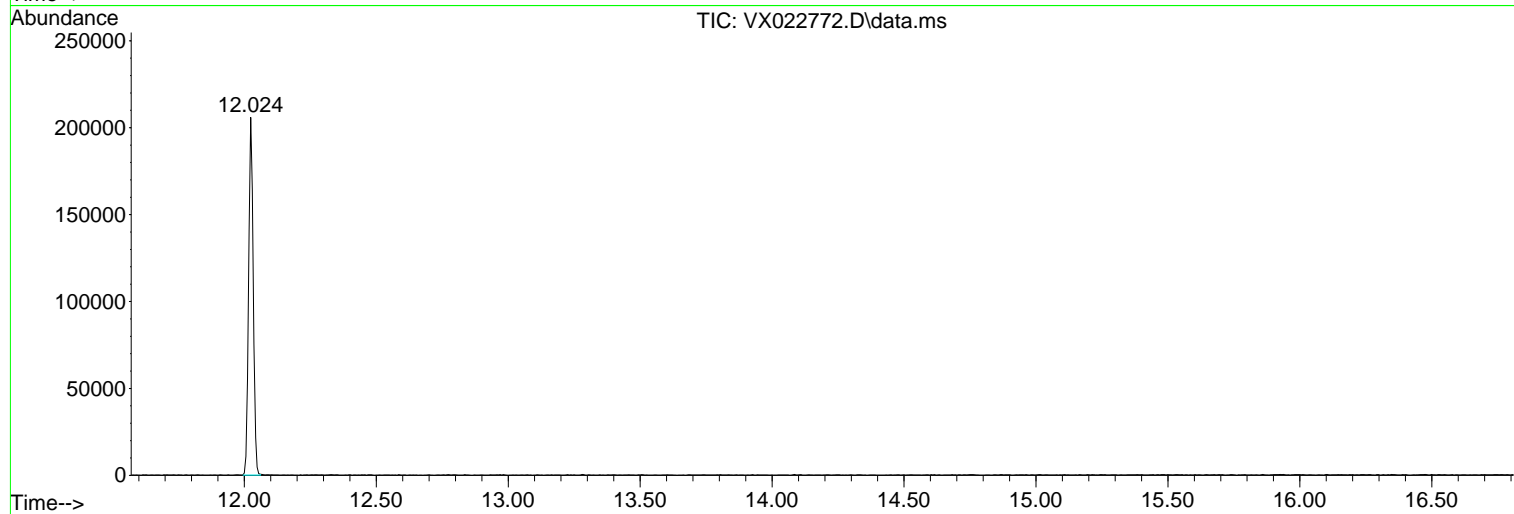
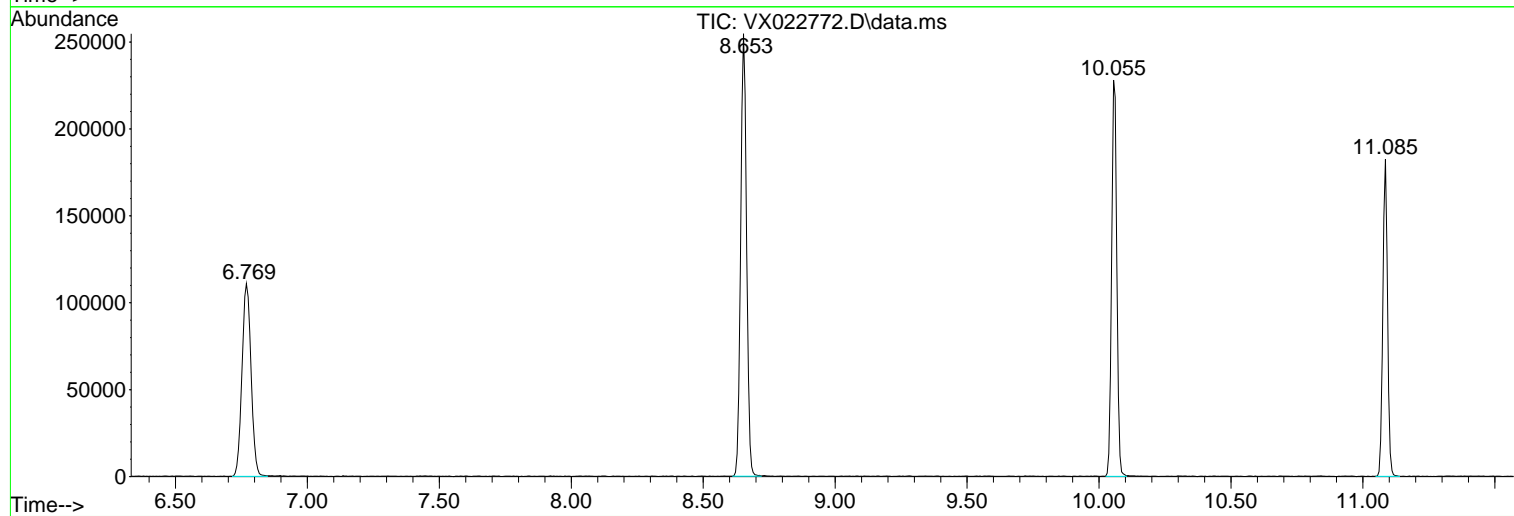
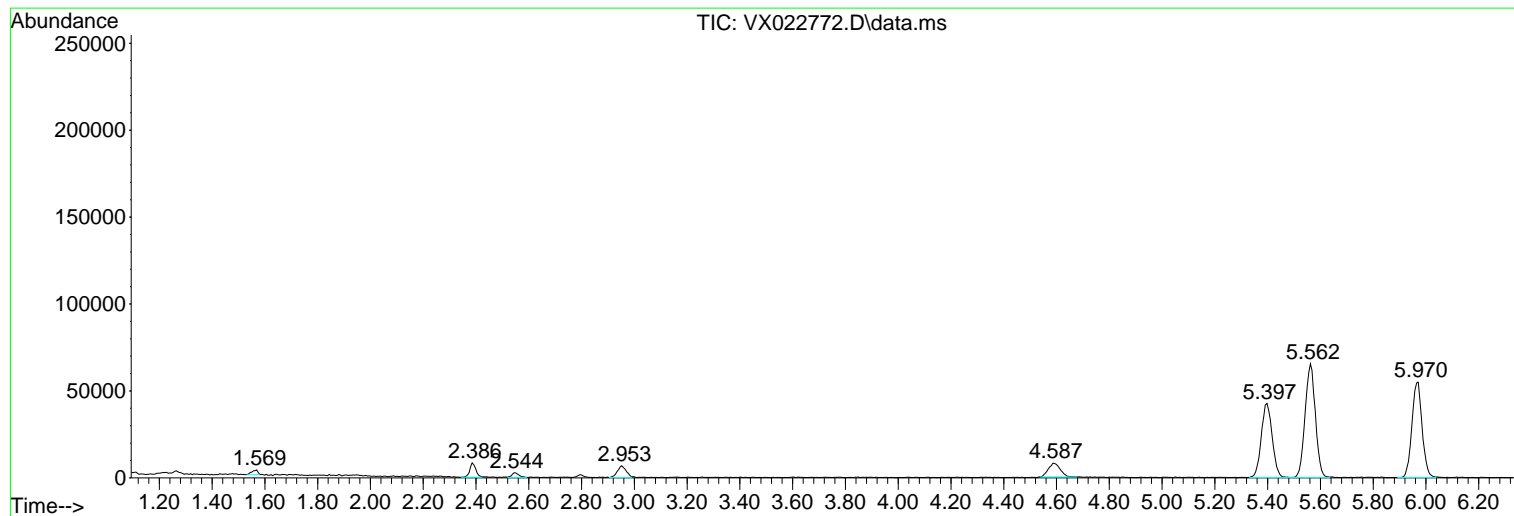
Sum of corrected areas: 1951745

Data Path : Z:\voasrv\HPCHEM1\MSVOA_X\Data\VX061821\
Data File : VX022772.D
Acq On : 18 Jun 2021 17:22
Operator : JC/MD
Sample : M2773-15
Misc : 5.0mL/MSVOA_X/WATER
ALS Vial : 20 Sample Multiplier: 1

Instrument :
MSVOA_X
ClientSampleId :
FB

Quant Method : Z:\voasrv\HPCHEM1\MSVOA_X\Method\82X061021W.M
Quant Title : SW846 8260

TIC Library : C:\DATABASE\NIST11.L
TIC Integration Parameters: LSCINT.P



Data Path : Z:\voasrv\HPCHEM1\MSVOA_X\Data\VX061821\
Data File : VX022772.D
Acq On : 18 Jun 2021 17:22
Operator : JC/MD
Sample : M2773-15
Misc : 5.0mL/MSVOA_X/WATER
ALS Vial : 20 Sample Multiplier: 1

Instrument :
MSVOA_X
ClientSampleId :
FB

Quant Method : Z:\voasrv\HPCHEM1\MSVOA_X\Method\82X061021W.M
Quant Title : SW846 8260

TIC Library : C:\DATABASE\NIST11.L
TIC Integration Parameters: LSCINT.P

No Library Search Compounds Detected

Data Path : Z:\voasrv\HPCHEM1\MSVOA_X\Data\VX061821\
Data File : VX022772.D
Acq On : 18 Jun 2021 17:22
Operator : JC/MD
Sample : M2773-15
Misc : 5.0mL/MSVOA_X/WATER
ALS Vial : 20 Sample Multiplier: 1

Instrument :
MSVOA_X
ClientSampled :
FB

Quant Method : Z:\voasrv\HPCHEM1\MSVOA_X\Method\82X061021W.M
Quant Title : SW846 8260

TIC Library : C:\DATABASE\NIST11.L
TIC Integration Parameters: LSCINT.P

| TIC Top Hit name | RT | EstConc | Units | Response | --Internal Standard-- | | |
|------------------|----|---------|-------|----------|-----------------------|----|-----------|
| | | | | | # | RT | Resp Conc |
