

Data Path : Z:\voasrv\HPCHEM1\MSVOA_X\Data\VX061824\
 Data File : VX041917.D
 Acq On : 18 Jun 2024 11:50
 Operator : JC/MD
 Sample : VIBLK
 Misc : 5.0mL/MSVOA_X/WATER
 ALS Vial : 9 Sample Multiplier: 1

Instrument :
 MSVOA_X
 ClientSampleId :

Quant Time: Jun 19 07:52:40 2024
 Quant Method : Z:\voasrv\HPCHEM1\MSVOA_X\Method\82X061824W.M
 Quant Title : SW846 8260
 QLast Update : Wed Jun 19 07:27:13 2024
 Response via : Initial Calibration

Compound	R.T.	QIon	Response	Conc	Units	Dev(Min)
Internal Standards						
1) Pentafluorobenzene	5.550	168	151229	50.000	ug/l	# 0.00
34) 1,4-Difluorobenzene	6.763	114	232646	50.000	ug/l	0.00
63) Chlorobenzene-d5	10.055	117	229917	50.000	ug/l	0.00
72) 1,4-Dichlorobenzene-d4	12.024	152	117406	50.000	ug/l	0.00
System Monitoring Compounds						
33) 1,2-Dichloroethane-d4	5.958	65	75269	43.162	ug/l	0.00
Spiked Amount	50.000	Range	78 - 117	Recovery	=	86.320%
35) Dibromofluoromethane	5.391	113	71640	43.399	ug/l	0.00
Spiked Amount	50.000	Range	75 - 124	Recovery	=	86.800%
50) Toluene-d8	8.647	98	272464	46.983	ug/l	0.00
Spiked Amount	50.000	Range	92 - 112	Recovery	=	93.960%
62) 4-Bromofluorobenzene	11.079	95	104744	48.998	ug/l	0.00
Spiked Amount	50.000	Range	83 - 123	Recovery	=	98.000%
Target Compounds						
						Qvalue
2) Dichlorodifluoromethane	1.166	85	801	0.695	ug/l	86
3) Chloromethane	1.307	50	913	0.632	ug/l	# 85
4) Vinyl Chloride	1.374	62	827	0.571	ug/l	# 56
5) Bromomethane	1.599	94	1004	1.403	ug/l	96
6) Chloroethane	1.666	64	478	Below Cal	#	43
7) Trichlorofluoromethane	1.868	101	1034	0.545	ug/l	93
9) 1,1,2-Trichlorotrifluo...	2.313	101	814	0.623	ug/l	# 88
10) Methyl Iodide	2.447	142	1549	0.953	ug/l	# 81
11) Tert butyl alcohol	2.995	59	998	3.016	ug/l	# 78
12) 1,1-Dichloroethene	2.307	96	879	0.674	ug/l	# 70
13) Acrolein	2.239	56	1034	2.787	ug/l	84
14) Allyl chloride	2.654	41	921	0.445	ug/l	# 86
15) Acrylonitrile	3.081	53	2167	2.507	ug/l	99
16) Acetone	2.392	43	2757	3.600	ug/l	# 84
17) Carbon Disulfide	2.502	76	6393	2.404	ug/l	96
18) Methyl Acetate	2.709	43	1036	0.496	ug/l	94
20) Methylene Chloride	2.788	84	2168	1.293	ug/l	# 80
21) trans-1,2-Dichloroethene	3.087	96	1576	1.191	ug/l	# 72
23) Vinyl Acetate	3.739	43	3700	0.991	ug/l	# 79
24) 1,1-Dichloroethane	3.605	63	583	0.238	ug/l	# 83
25) 2-Butanone	4.611	43	1789	1.502	ug/l	# 88
27) cis-1,2-Dichloroethene	4.507	96	895	0.540	ug/l	85
28) Bromochloromethane	4.910	49	409	0.390	ug/l	# 55
29) Tetrahydrofuran	5.032	42	514	0.668	ug/l	# 41
31) Cyclohexane	5.464	56	988	0.484	ug/l	# 76
32) 1,1,1-Trichloroethane	5.379	97	534	0.251	ug/l	# 40
36) 1,1-Dichloropropene	5.696	75	1619	0.924	ug/l	# 92
38) Carbon Tetrachloride	5.672	117	742	0.383	ug/l	# 63
39) Methylcyclohexane	7.373	83	1173	0.529	ug/l	# 82
40) Benzene	6.050	78	1810	0.306	ug/l	93
42) 1,2-Dichloroethane	6.092	62	656	0.344	ug/l	# 77
44) Trichloroethene	7.141	130	1418	0.895	ug/l	75
46) Dibromomethane	7.592	93	518	0.489	ug/l	# 61
49) 1,4-Dioxane	7.702	88	409	28.988	ug/l	# 50
51) 4-Methyl-2-Pentanone	8.580	43	1955	0.810	ug/l	95
52) Toluene	8.726	92	1603	0.426	ug/l	91

Data Path : Z:\voasrv\HPCHEM1\MSVOA_X\Data\VX061824\
 Data File : VX041917.D
 Acq On : 18 Jun 2024 11:50
 Operator : JC/MD
 Sample : VIBLK
 Misc : 5.0mL/MSVOA_X/WATER
 ALS Vial : 9 Sample Multiplier: 1

Instrument :
 MSVOA_X
 ClientSampleId :

Quant Time: Jun 19 07:52:40 2024
 Quant Method : Z:\voasrv\HPCHEM1\MSVOA_X\Method\82X061824W.M
 Quant Title : SW846 8260
 QLast Update : Wed Jun 19 07:27:13 2024
 Response via : Initial Calibration

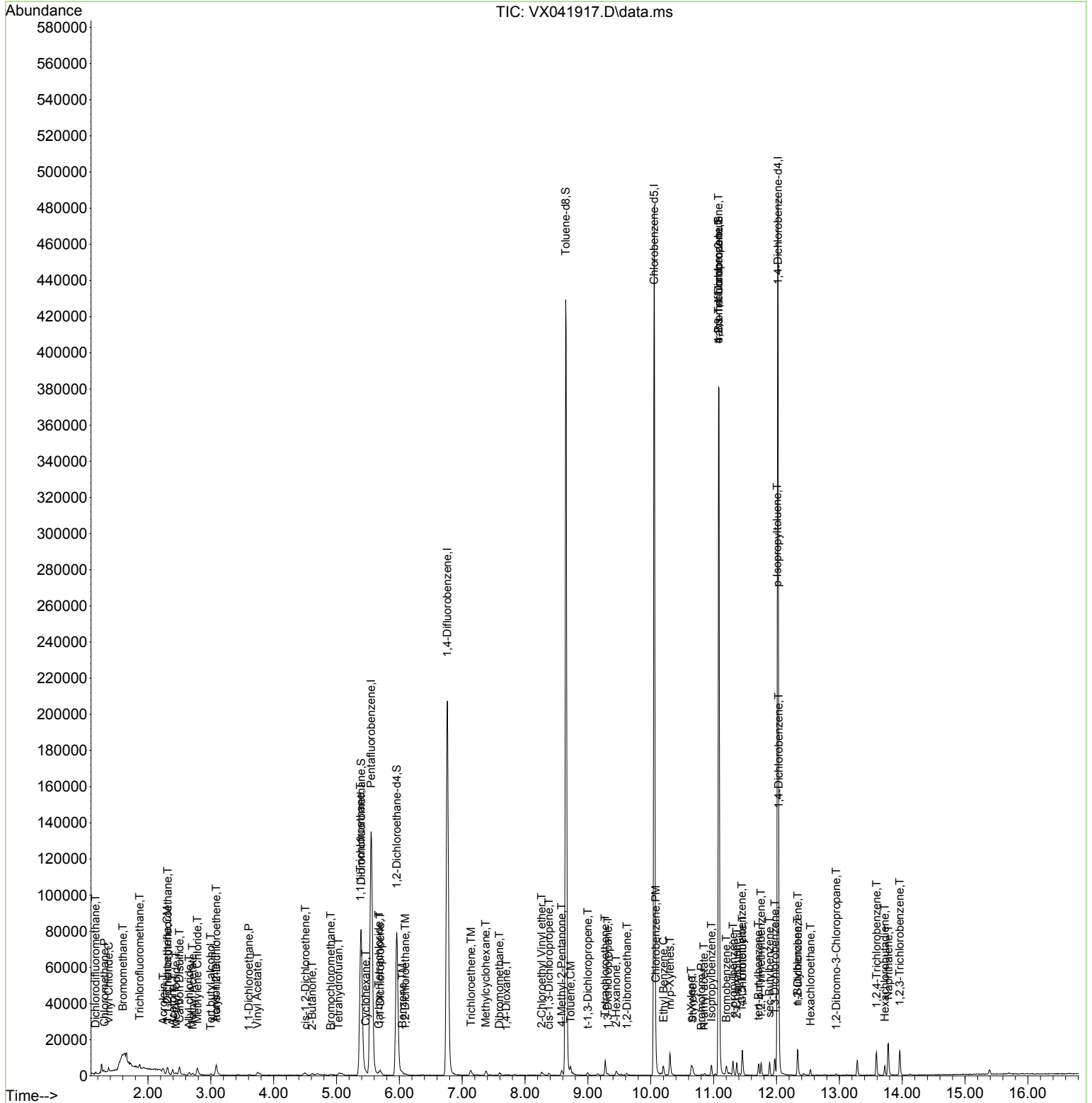
Compound	R.T.	QIon	Response	Conc	Units	Dev(Min)
53) t-1,3-Dichloropropene	9.000	75	824	1.295	ug/l	90
54) cis-1,3-Dichloropropene	8.379	75	864	0.406	ug/l #	76
57) 1,3-Dichloropropane	9.317	76	548	0.216	ug/l #	86
58) 2-Chloroethyl Vinyl ether	8.263	63	1009	0.887	ug/l	96
59) 2-Hexanone	9.452	43	2144	1.159	ug/l	97
61) 1,2-Dibromoethane	9.622	107	478	0.294	ug/l #	66
64) Tetrachloroethene	9.275	164	1619	0.967	ug/l	82
65) Chlorobenzene	10.080	112	2753	0.576	ug/l	96
67) Ethyl Benzene	10.201	91	3690	0.492	ug/l #	84
68) m/p-Xylenes	10.305	106	3382	1.118	ug/l	92
69) o-Xylene	10.646	106	1213	0.405	ug/l	100
70) Styrene	10.665	104	2478	0.493	ug/l	95
71) Bromoform	10.805	173	267	1.045	ug/l #	29
73) Isopropylbenzene	10.964	105	3515	0.492	ug/l	100
74) N-amyl acetate	10.848	43	786	0.248	ug/l #	78
76) 1,2,3-Trichloropropane	11.079	75	46972	22.038	ug/l #	39
77) Bromobenzene	11.201	156	1362	0.641	ug/l	82
78) n-propylbenzene	11.311	91	5763	0.744	ug/l	97
79) 2-Chlorotoluene	11.366	91	3604	0.722	ug/l	99
80) 1,3,5-Trimethylbenzene	11.451	105	3362	0.565	ug/l	91
81) trans-1,4-Dichloro-2-b...	11.079	75	46972	62.586	ug/l #	5
82) 4-Chlorotoluene	11.457	91	5009	0.908	ug/l	96
83) tert-Butylbenzene	11.713	119	2660	0.408	ug/l	93
84) 1,2,4-Trimethylbenzene	11.756	105	3638	0.610	ug/l	89
85) sec-Butylbenzene	11.890	105	4179	0.566	ug/l	98
86) p-Isopropyltoluene	12.012	119	4002	0.621	ug/l	91
87) 1,3-Dichlorobenzene	11.976	146	3789	1.014	ug/l	94
88) 1,4-Dichlorobenzene	12.036	146	4534	1.185	ug/l	79
89) n-Butylbenzene	12.335	91	4057	0.818	ug/l	99
90) Hexachloroethane	12.542	117	391	0.356	ug/l	73
91) 1,2-Dichlorobenzene	12.341	146	2808	0.734	ug/l	93
92) 1,2-Dibromo-3-Chloropr...	12.951	75	206	0.392	ug/l	63
93) 1,2,4-Trichlorobenzene	13.591	180	4204	1.678	ug/l	93
94) Hexachlorobutadiene	13.725	225	1003	0.792	ug/l	84
95) Naphthalene	13.780	128	14172	2.406	ug/l	100
96) 1,2,3-Trichlorobenzene	13.963	180	4445	1.682	ug/l	94

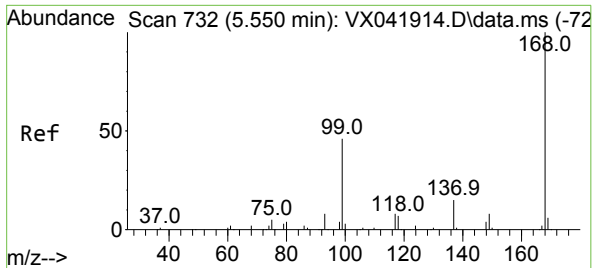
(#) = qualifier out of range (m) = manual integration (+) = signals summed

Data Path : Z:\voasrv\HPCHEM1\MSVOA_X\Data\VX061824\
 Data File : VX041917.D
 Acq On : 18 Jun 2024 11:50
 Operator : JC/MD
 Sample : VIBLK
 Misc : 5.0mL/MSVOA_X/WATER
 ALS Vial : 9 Sample Multiplier: 1

Instrument :
 MSVOA_X
 ClientSampleId :

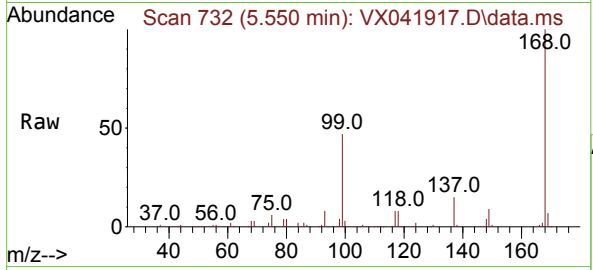
Quant Time: Jun 19 07:52:40 2024
 Quant Method : Z:\voasrv\HPCHEM1\MSVOA_X\Method\82X061824W.M
 Quant Title : SW846 8260
 QLast Update : Wed Jun 19 07:27:13 2024
 Response via : Initial Calibration



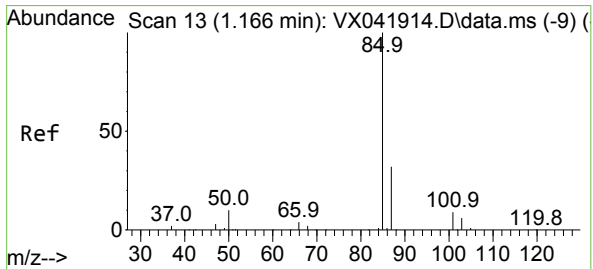
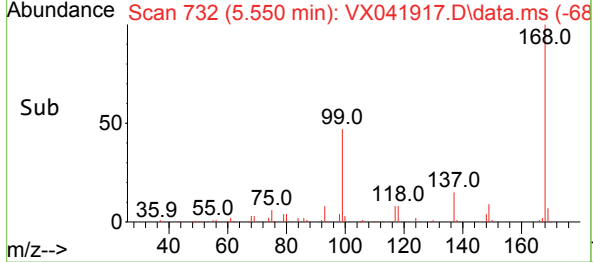
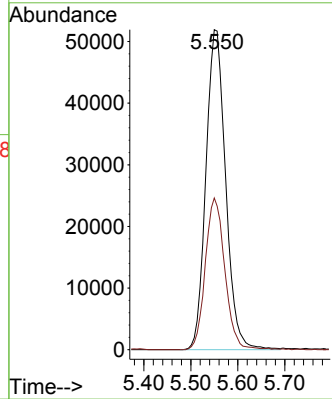


#1
 Pentafluorobenzene
 Concen: 50.000 ug/l
 RT: 5.550 min Scan# 71
 Delta R.T. -0.000 min
 Lab File: VX041917.D
 Acq: 18 Jun 2024 11:50

Instrument : MSVOA_X
 ClientSampleId :

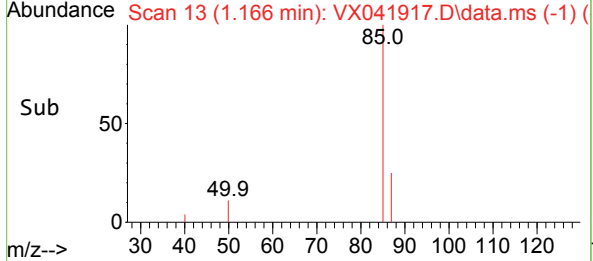
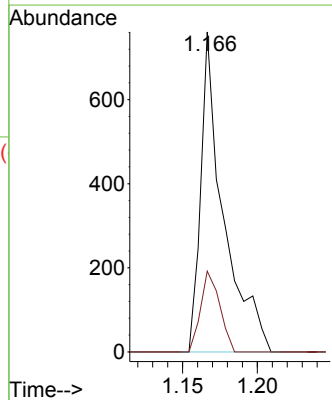
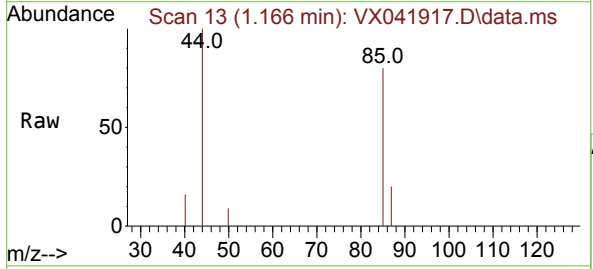


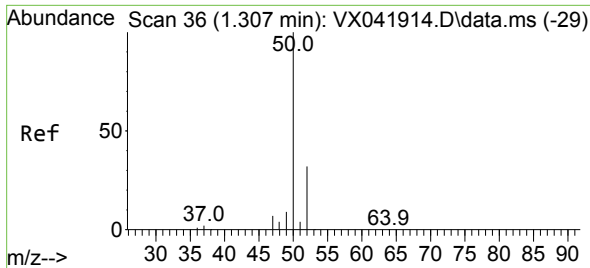
Tgt Ion:168 Resp: 151229
 Ion Ratio Lower Upper
 168 100
 99 47.4 56.6 85.0#



#2
 Dichlorodifluoromethane
 Concen: 0.695 ug/l
 RT: 1.166 min Scan# 13
 Delta R.T. 0.000 min
 Lab File: VX041917.D
 Acq: 18 Jun 2024 11:50

Tgt Ion: 85 Resp: 801
 Ion Ratio Lower Upper
 85 100
 87 25.2 16.7 50.1

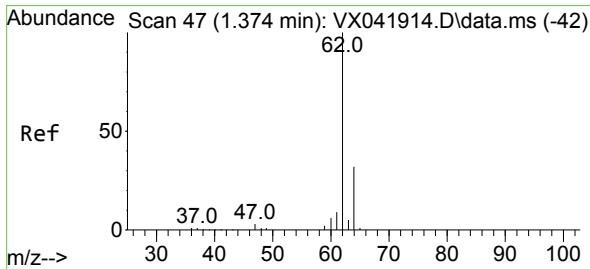
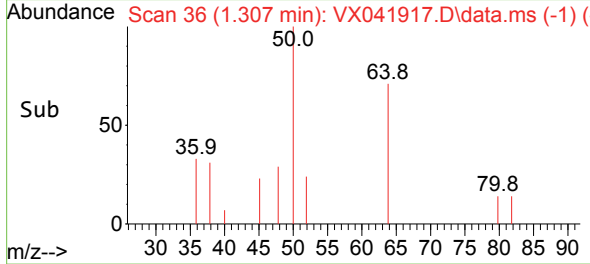
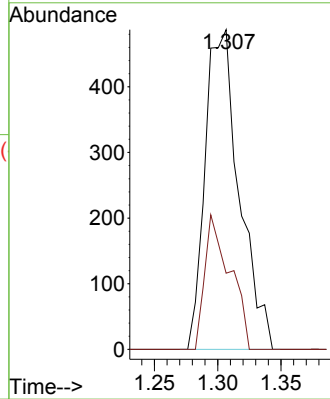
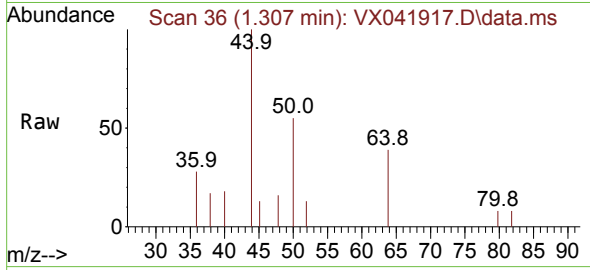




#3
 Chloromethane
 Concen: 0.632 ug/l
 RT: 1.307 min Scan# 30
 Delta R.T. 0.000 min
 Lab File: VX041917.D
 Acq: 18 Jun 2024 11:50

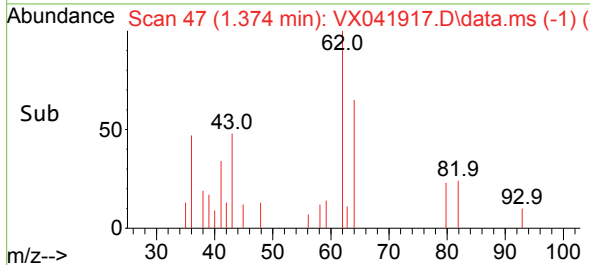
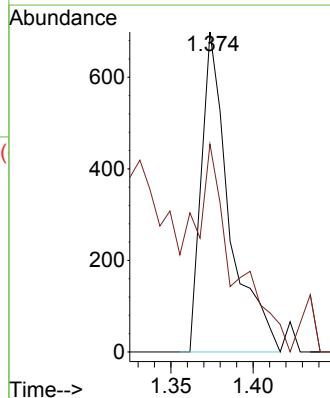
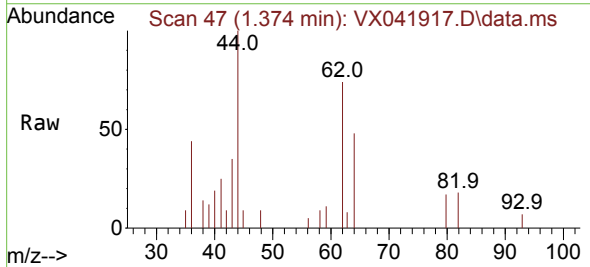
Instrument :
 MSVOA_X
 ClientSampleId :

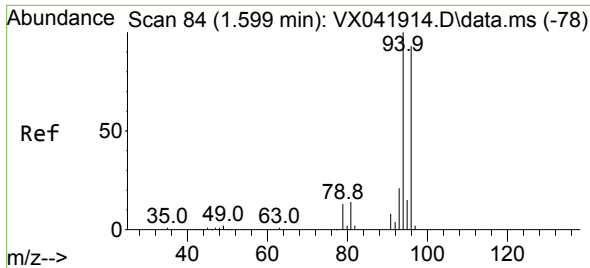
Tgt Ion: 50 Resp: 913
 Ion Ratio Lower Upper
 50 100
 52 23.8 25.5 38.3#



#4
 Vinyl Chloride
 Concen: 0.571 ug/l
 RT: 1.374 min Scan# 47
 Delta R.T. 0.000 min
 Lab File: VX041917.D
 Acq: 18 Jun 2024 11:50

Tgt Ion: 62 Resp: 827
 Ion Ratio Lower Upper
 62 100
 64 56.4 25.4 38.0#

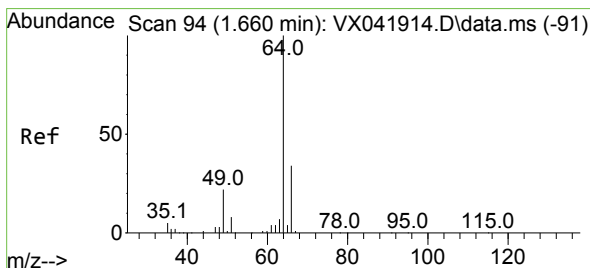
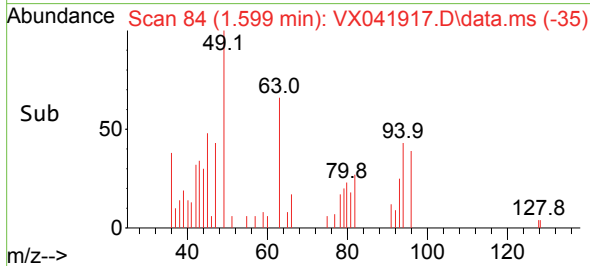
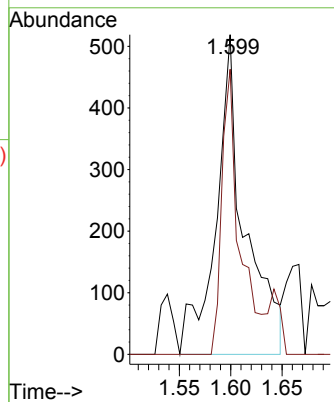
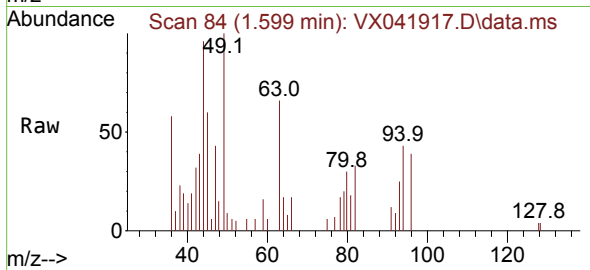




#5
 Bromomethane
 Concen: 1.403 ug/l
 RT: 1.599 min Scan# 84
 Delta R.T. 0.000 min
 Lab File: VX041917.D
 Acq: 18 Jun 2024 11:50

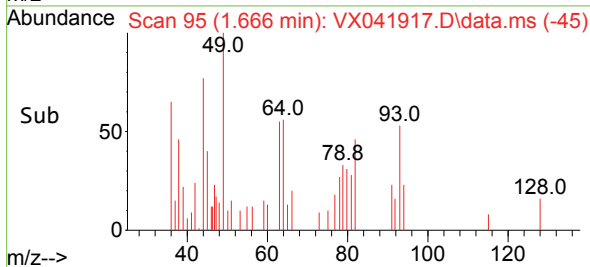
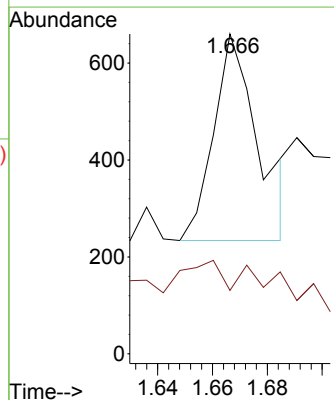
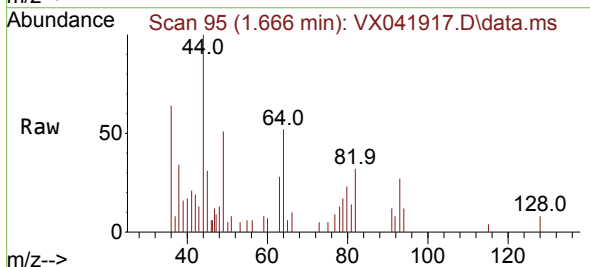
Instrument :
 MSVOA_X
 ClientSampleId :

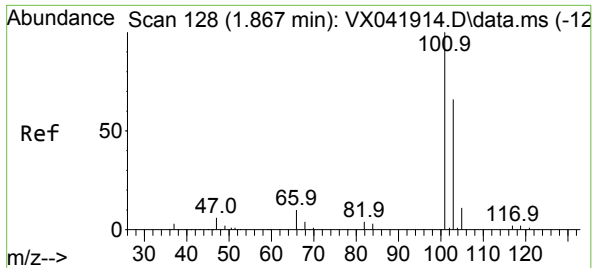
Tgt Ion: 94 Resp: 1004
 Ion Ratio Lower Upper
 94 100
 96 89.2 74.6 111.8



#6
 Chloroethane
 Concen: Below Cal
 RT: 1.666 min Scan# 95
 Delta R.T. 0.006 min
 Lab File: VX041917.D
 Acq: 18 Jun 2024 11:50

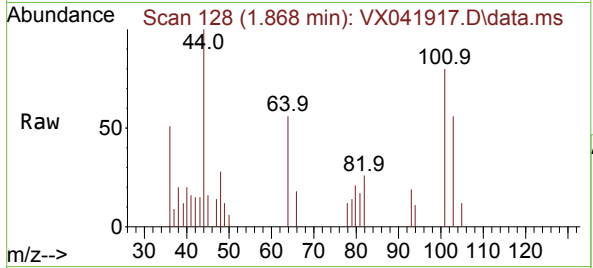
Tgt Ion: 64 Resp: 478
 Ion Ratio Lower Upper
 64 100
 66 0.0 25.1 37.7#



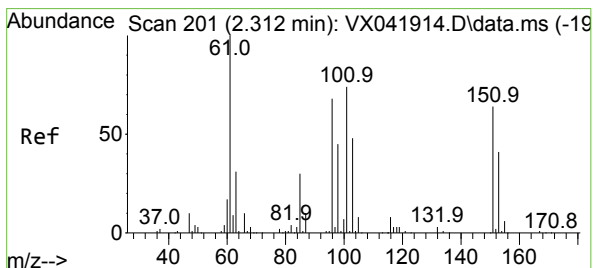
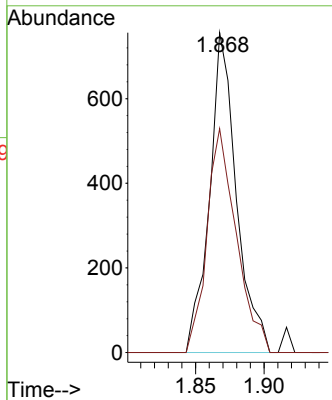
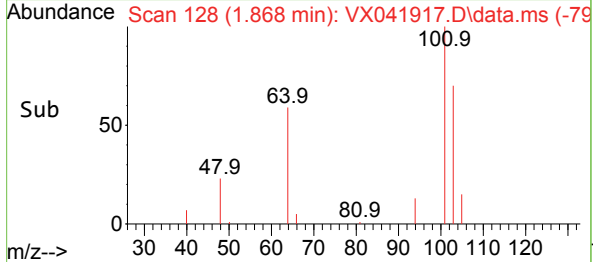


#7
 Trichlorofluoromethane
 Concen: 0.545 ug/l
 RT: 1.868 min Scan# 11
 Delta R.T. 0.000 min
 Lab File: VX041917.D
 Acq: 18 Jun 2024 11:50

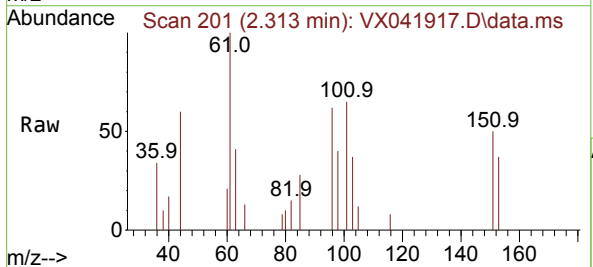
Instrument :
 MSVOA_X
 ClientSampleId :



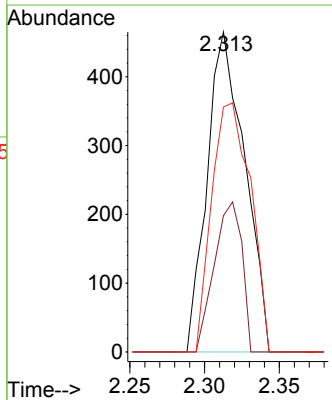
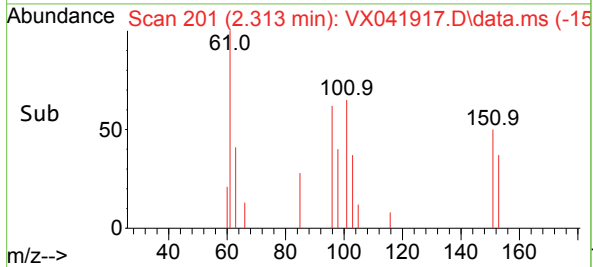
Tgt Ion:101 Resp: 1034
 Ion Ratio Lower Upper
 101 100
 103 70.0 51.4 77.2

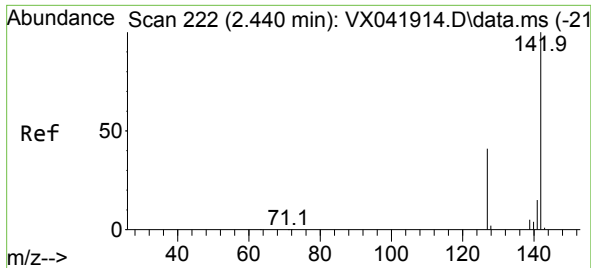


#9
 1,1,2-Trichlorotrifluoroethane
 Concen: 0.623 ug/l
 RT: 2.313 min Scan# 201
 Delta R.T. 0.000 min
 Lab File: VX041917.D
 Acq: 18 Jun 2024 11:50



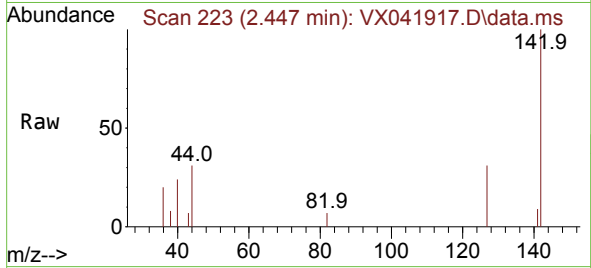
Tgt Ion:101 Resp: 814
 Ion Ratio Lower Upper
 101 100
 85 34.4 37.0 55.6#
 151 80.2 58.6 87.8



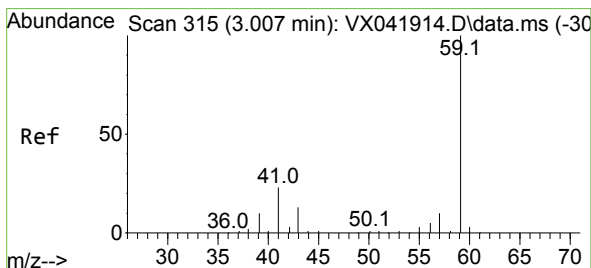
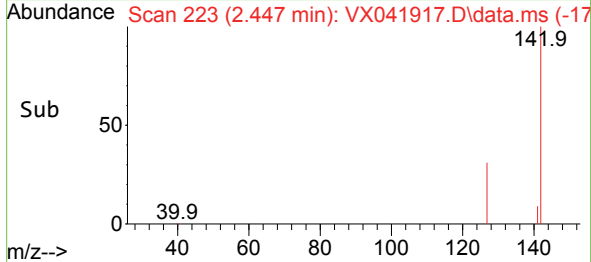
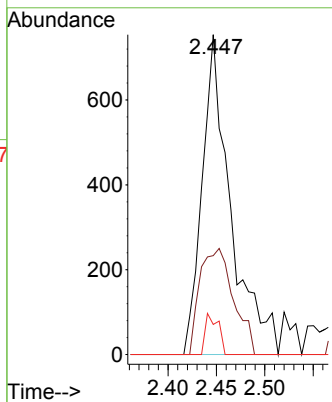


#10
Methyl Iodide
Concen: 0.953 ug/l
RT: 2.447 min Scan# 21
Delta R.T. 0.006 min
Lab File: VX041917.D
Acq: 18 Jun 2024 11:50

Instrument : MSVOA_X
ClientSampleId :

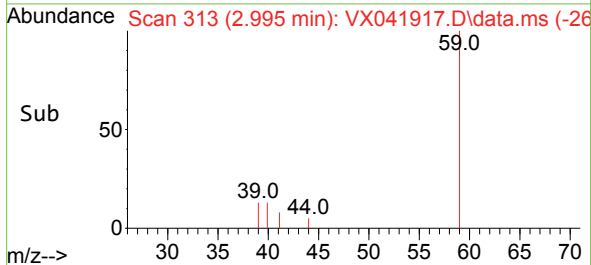
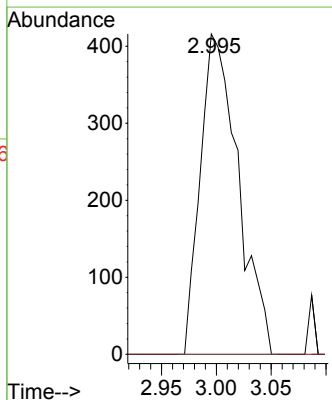
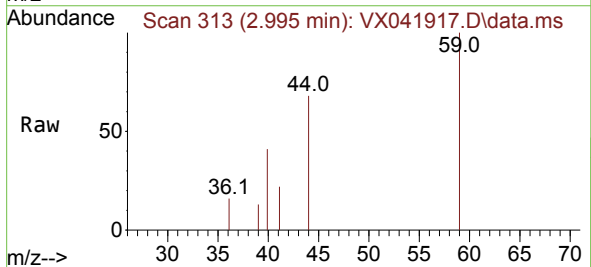


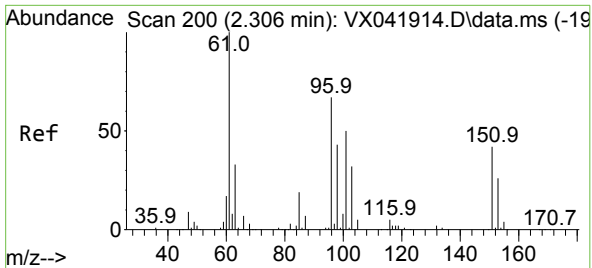
Tgt Ion:142 Resp: 1549
Ion Ratio Lower Upper
142 100
127 39.1 41.6 62.4#
141 5.8 11.6 17.4#



#11
Tert butyl alcohol
Concen: 3.016 ug/l
RT: 2.995 min Scan# 313
Delta R.T. -0.012 min
Lab File: VX041917.D
Acq: 18 Jun 2024 11:50

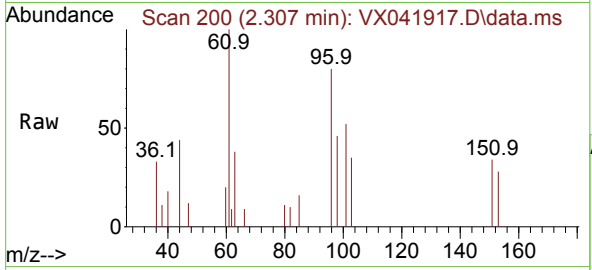
Tgt Ion: 59 Resp: 998
Ion Ratio Lower Upper
59 100
57 0.0 6.0 9.0#





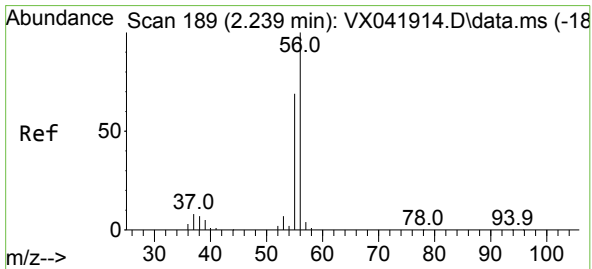
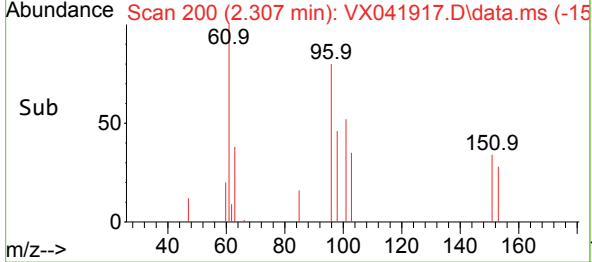
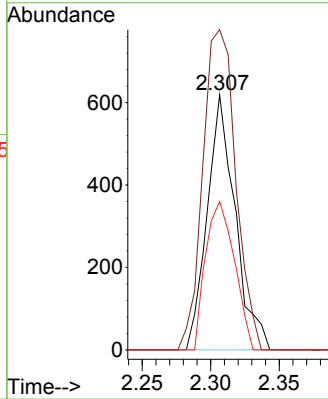
#12
 1,1-Dichloroethene
 Concen: 0.674 ug/l
 RT: 2.307 min Scan# 200
 Delta R.T. 0.000 min
 Lab File: VX041917.D
 Acq: 18 Jun 2024 11:50

Instrument : MSVOA_X
 ClientSampleId :



Tgt Ion: 96 Resp: 879

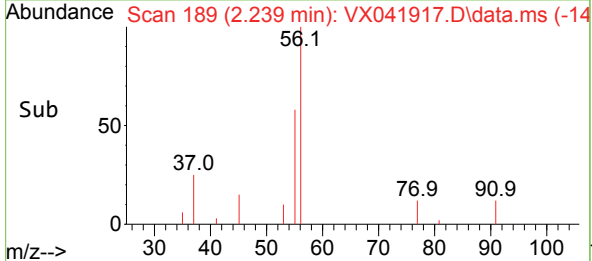
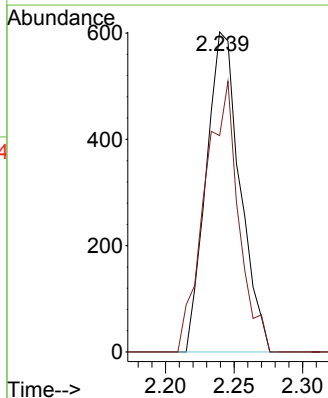
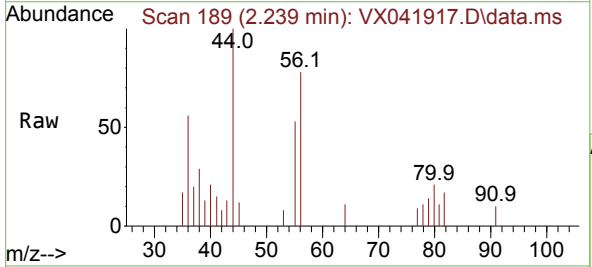
Ion	Ratio	Lower	Upper
96	100		
61	125.5	144.6	216.8#
98	58.2	50.4	75.6

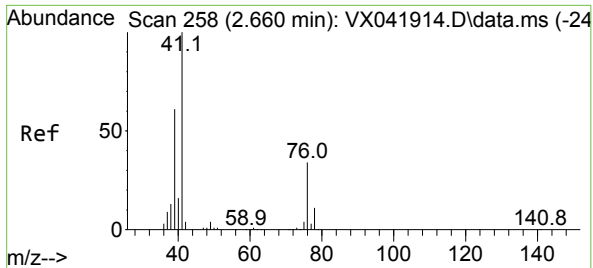


#13
 Acrolein
 Concen: 2.787 ug/l
 RT: 2.239 min Scan# 189
 Delta R.T. 0.000 min
 Lab File: VX041917.D
 Acq: 18 Jun 2024 11:50

Tgt Ion: 56 Resp: 1034

Ion	Ratio	Lower	Upper
56	100		
55	84.8	57.1	85.7



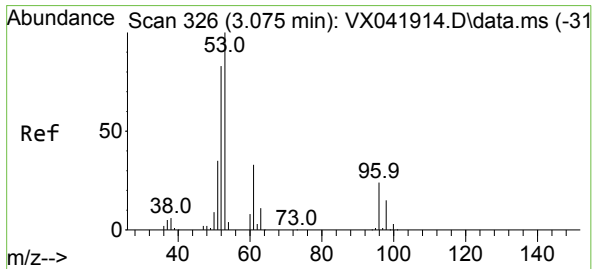
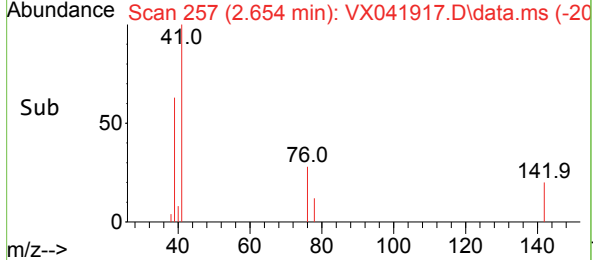
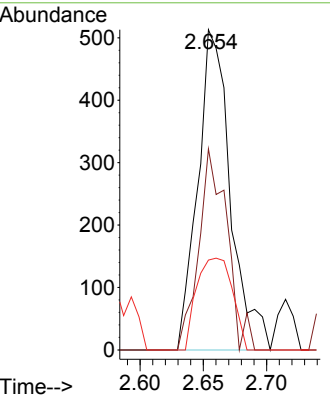
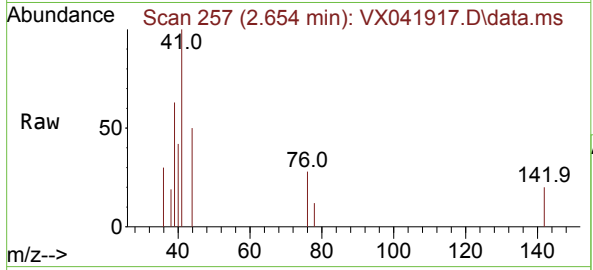


#14
 Allyl chloride
 Concen: 0.445 ug/l
 RT: 2.654 min Scan# 21
 Delta R.T. -0.006 min
 Lab File: VX041917.D
 Acq: 18 Jun 2024 11:50

Instrument : MSVOA_X
 ClientSampleId :

Tgt Ion: 41 Resp: 921

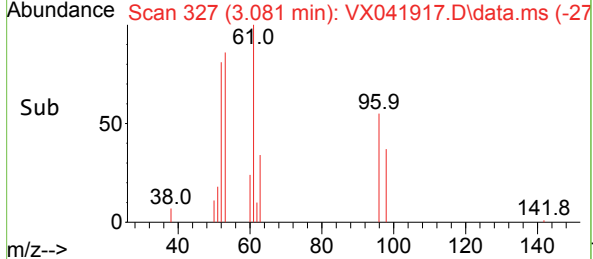
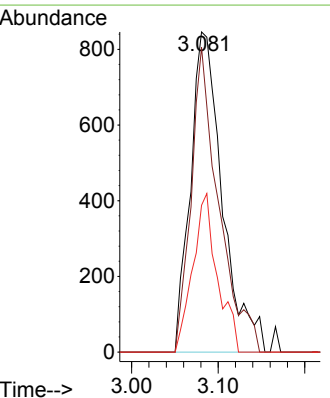
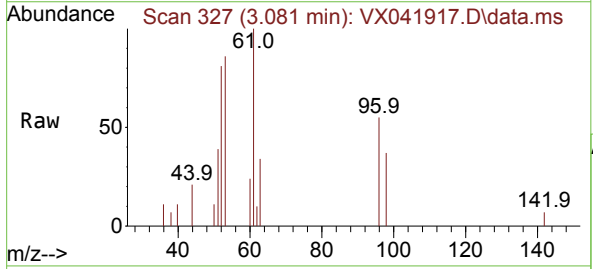
Ion	Ratio	Lower	Upper
41	100		
39	54.1	55.8	83.6#
76	31.4	24.3	36.5

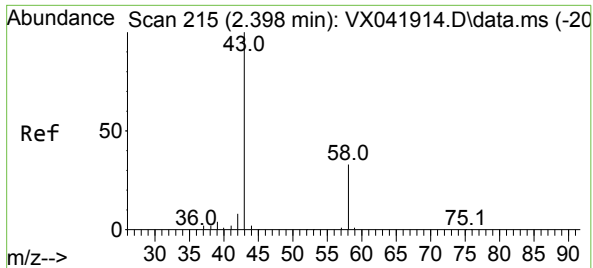


#15
 Acrylonitrile
 Concen: 2.507 ug/l
 RT: 3.081 min Scan# 327
 Delta R.T. 0.006 min
 Lab File: VX041917.D
 Acq: 18 Jun 2024 11:50

Tgt Ion: 53 Resp: 2167

Ion	Ratio	Lower	Upper
53	100		
52	82.4	66.0	99.0
51	38.1	29.8	44.6

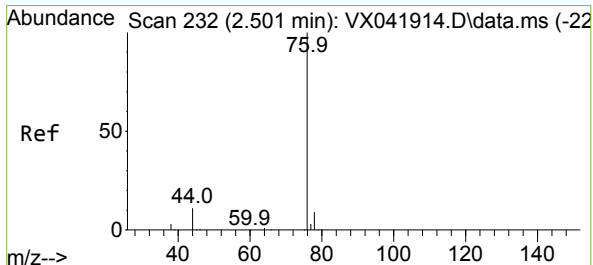
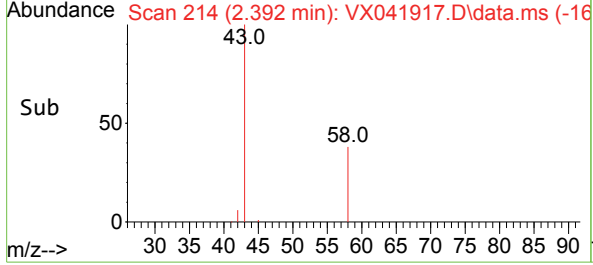
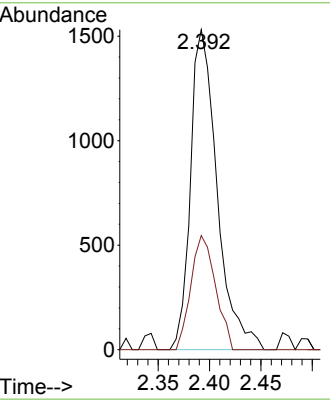
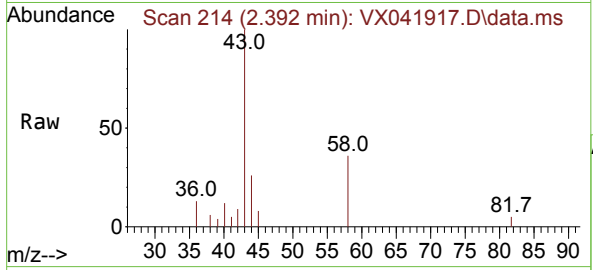




#16
 Acetone
 Concen: 3.600 ug/l
 RT: 2.392 min Scan# 215
 Delta R.T. -0.006 min
 Lab File: VX041917.D
 Acq: 18 Jun 2024 11:50

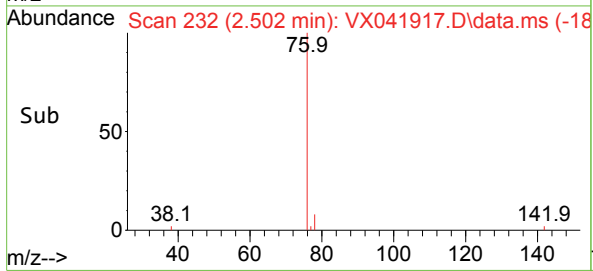
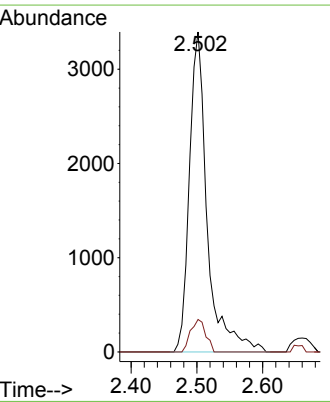
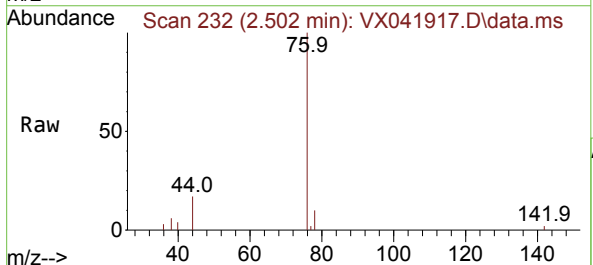
Instrument : MSVOA_X
 ClientSampleId :

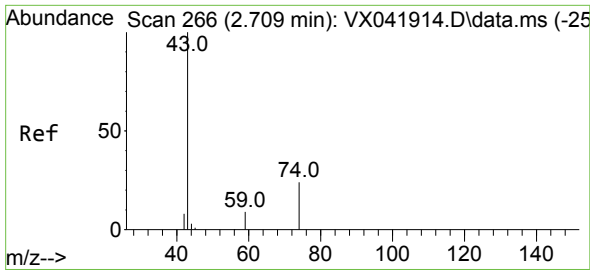
Tgt Ion: 43 Resp: 2757
 Ion Ratio Lower Upper
 43 100
 58 35.7 21.9 32.9#



#17
 Carbon Disulfide
 Concen: 2.404 ug/l
 RT: 2.502 min Scan# 232
 Delta R.T. 0.000 min
 Lab File: VX041917.D
 Acq: 18 Jun 2024 11:50

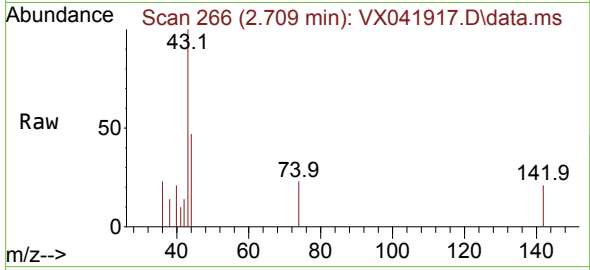
Tgt Ion: 76 Resp: 6393
 Ion Ratio Lower Upper
 76 100
 78 10.1 7.0 10.6



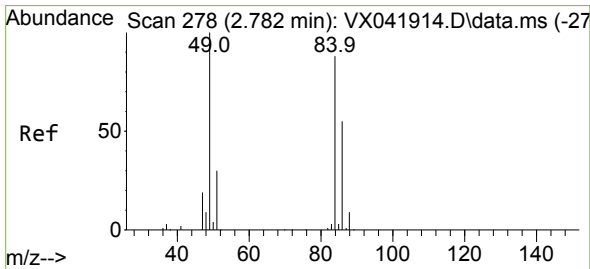
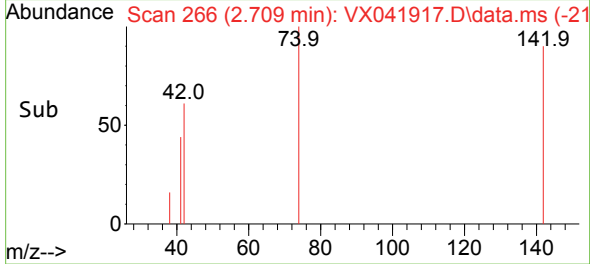
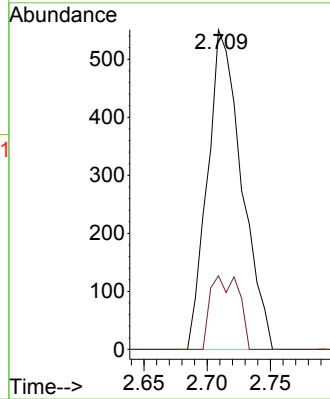


#18
 Methyl Acetate
 Concen: 0.496 ug/l
 RT: 2.709 min Scan# 20
 Delta R.T. 0.000 min
 Lab File: VX041917.D
 Acq: 18 Jun 2024 11:50

Instrument :
 MSVOA_X
 ClientSampleId :

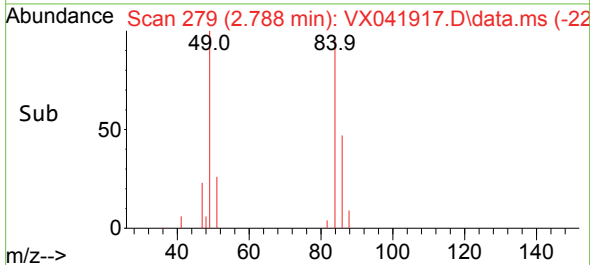
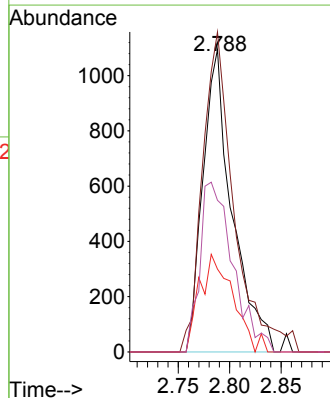
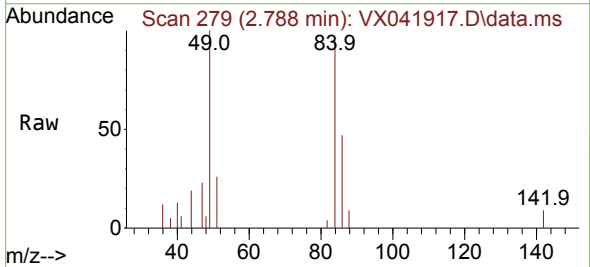


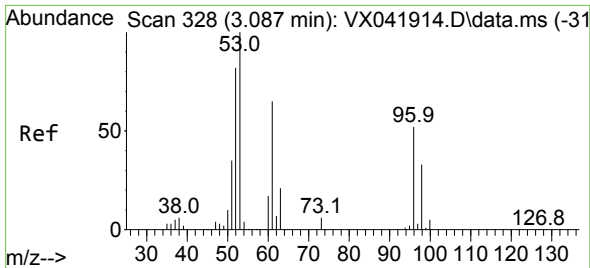
Tgt Ion: 43 Resp: 1036
 Ion Ratio Lower Upper
 43 100
 74 19.2 17.8 26.8



#20
 Methylene Chloride
 Concen: 1.293 ug/l
 RT: 2.788 min Scan# 279
 Delta R.T. 0.006 min
 Lab File: VX041917.D
 Acq: 18 Jun 2024 11:50

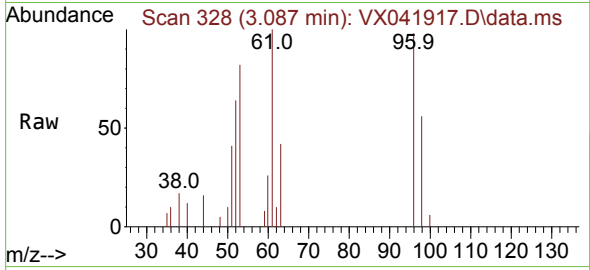
Tgt Ion: 84 Resp: 2168
 Ion Ratio Lower Upper
 84 100
 49 105.8 103.6 155.4
 51 27.4 33.8 50.6#
 86 50.1 49.4 74.0



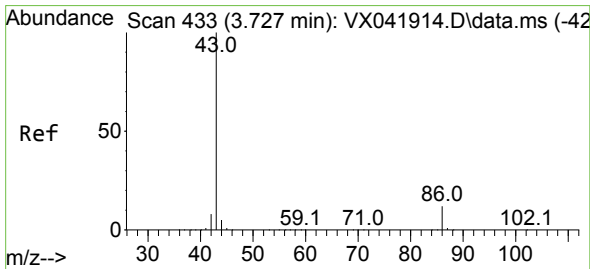
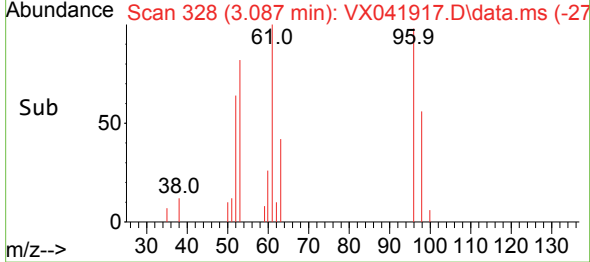
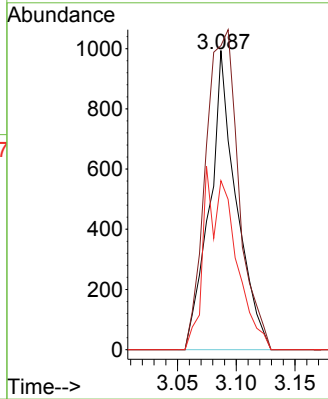


#21
 trans-1,2-Dichloroethene
 Concen: 1.191 ug/l
 RT: 3.087 min Scan# 31
 Delta R.T. 0.000 min
 Lab File: VX041917.D
 Acq: 18 Jun 2024 11:50

Instrument : MSVOA_X
 ClientSampleId :

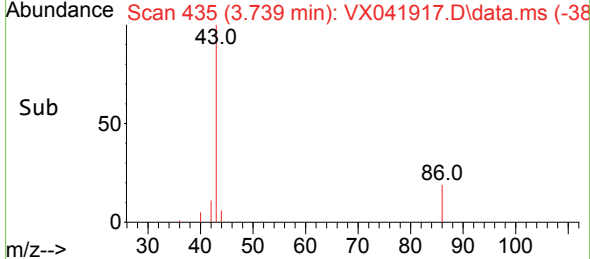
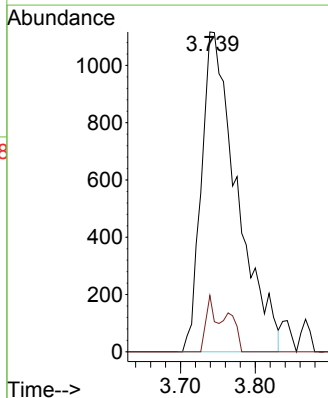
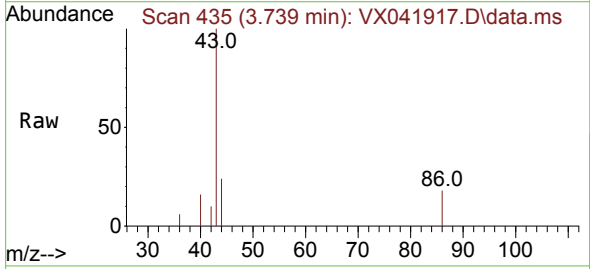


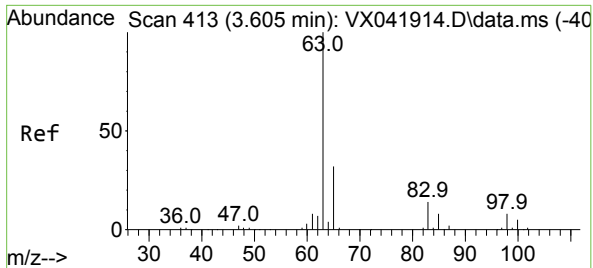
Tgt Ion	Resp	Ion Ratio	Lower	Upper
96	1576	100		
61		101.6	119.2	178.8#
98		56.4	48.7	73.1



#23
 Vinyl Acetate
 Concen: 0.991 ug/l
 RT: 3.739 min Scan# 435
 Delta R.T. 0.012 min
 Lab File: VX041917.D
 Acq: 18 Jun 2024 11:50

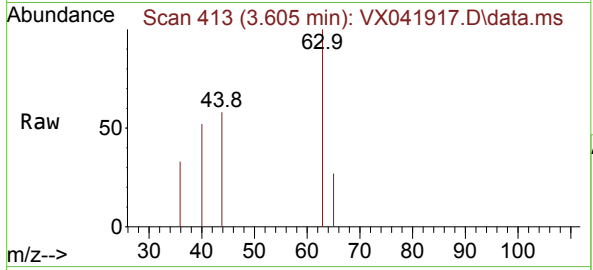
Tgt Ion	Resp	Ion Ratio	Lower	Upper
43	3700	100		
86		17.6	7.8	11.8#





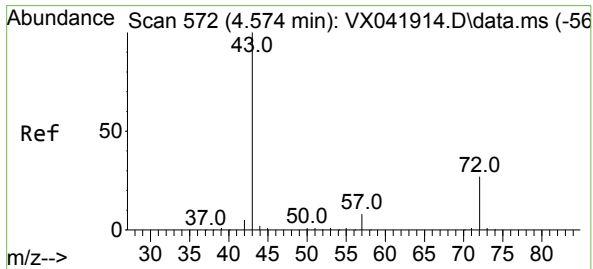
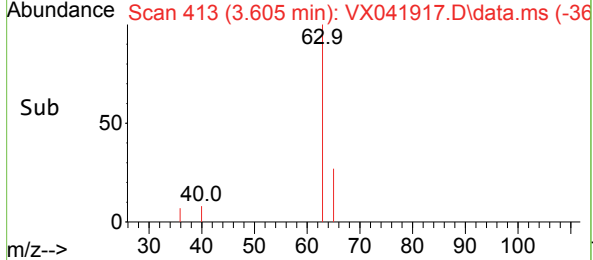
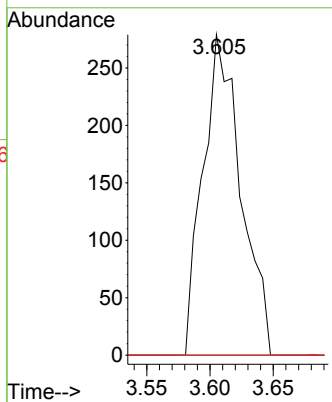
#24
 1,1-Dichloroethane
 Concen: 0.238 ug/l
 RT: 3.605 min Scan# 41
 Delta R.T. 0.000 min
 Lab File: VX041917.D
 Acq: 18 Jun 2024 11:50

Instrument : MSVOA_X
 ClientSampleId :



Tgt Ion: 63 Resp: 583

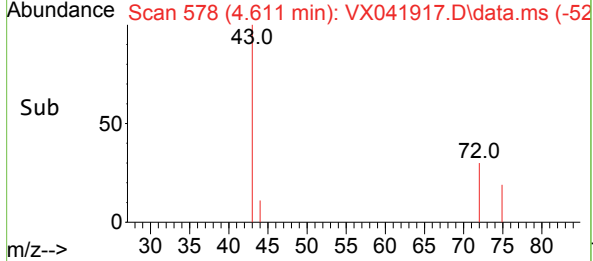
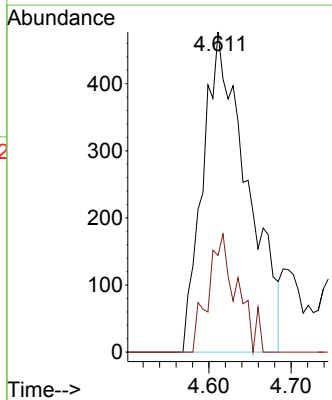
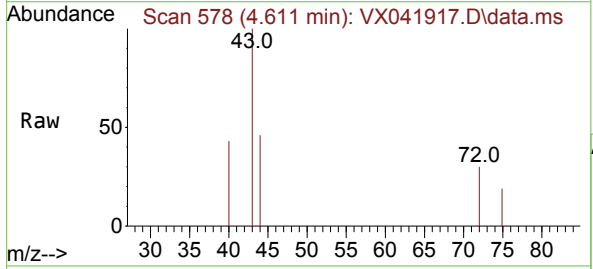
Ion	Ratio	Lower	Upper
63	100		
98	0.0	3.3	9.8#
100	0.0	2.1	6.5#

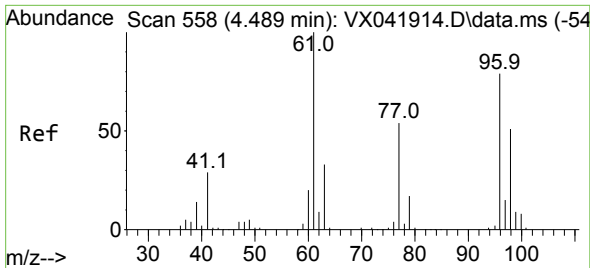


#25
 2-Butanone
 Concen: 1.502 ug/l
 RT: 4.611 min Scan# 578
 Delta R.T. 0.037 min
 Lab File: VX041917.D
 Acq: 18 Jun 2024 11:50

Tgt Ion: 43 Resp: 1789

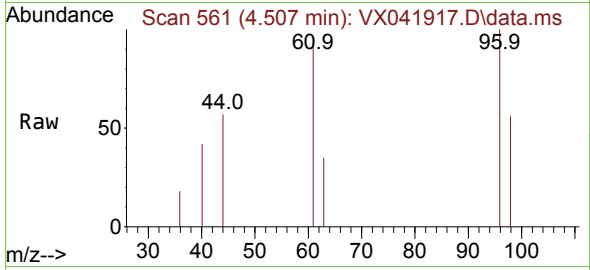
Ion	Ratio	Lower	Upper
43	100		
72	30.2	19.4	29.2#



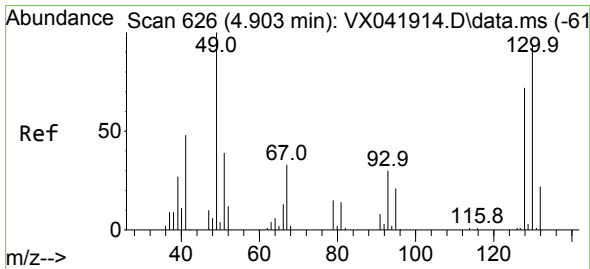
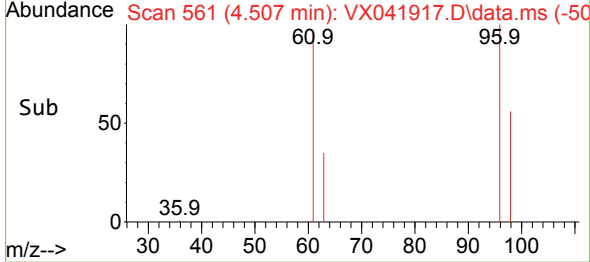
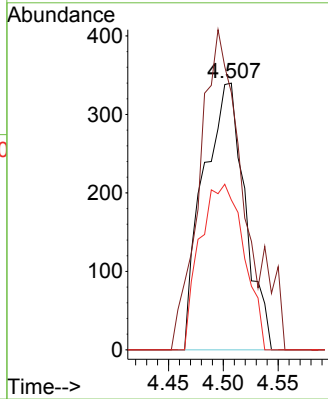


#27
 cis-1,2-Dichloroethene
 Concen: 0.540 ug/l
 RT: 4.507 min Scan# 50
 Delta R.T. 0.018 min
 Lab File: VX041917.D
 Acq: 18 Jun 2024 11:50

Instrument :
 MSVOA_X
 ClientSampleId :

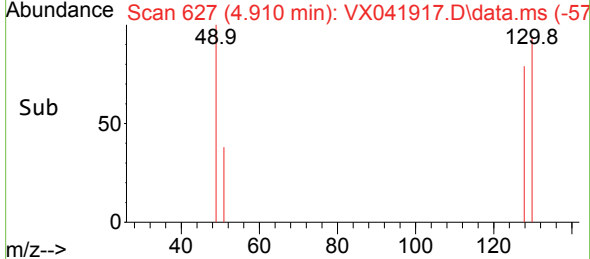
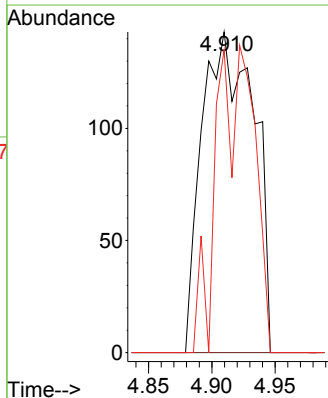
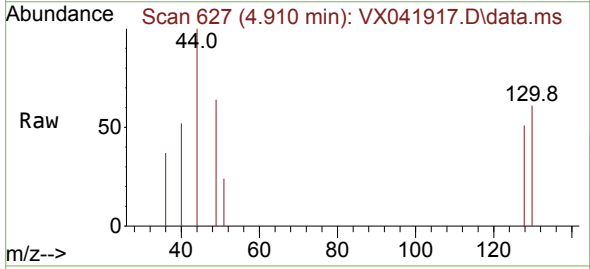


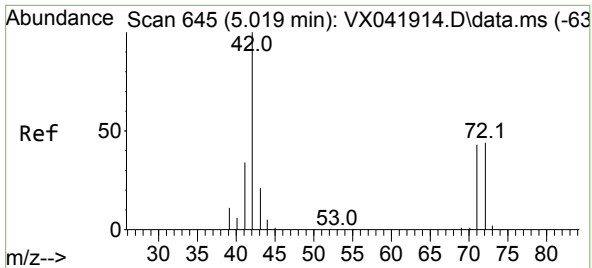
Tgt Ion: 96 Resp: 895
 Ion Ratio Lower Upper
 96 100
 61 129.1 0.0 312.2
 98 66.1 0.0 129.0



#28
 Bromochloromethane
 Concen: 0.390 ug/l
 RT: 4.910 min Scan# 627
 Delta R.T. 0.006 min
 Lab File: VX041917.D
 Acq: 18 Jun 2024 11:50

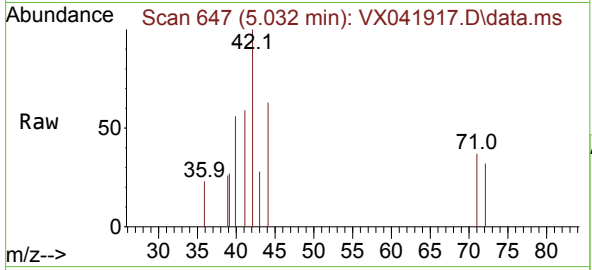
Tgt Ion: 49 Resp: 409
 Ion Ratio Lower Upper
 49 100
 129 0.0 0.0 3.8
 130 33.5 57.5 86.3#





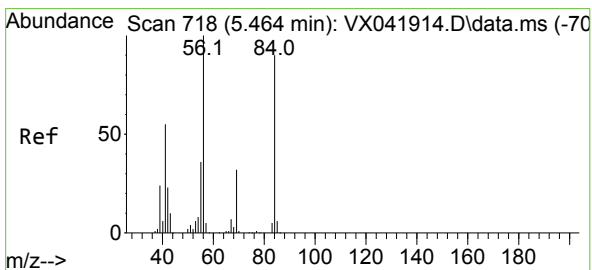
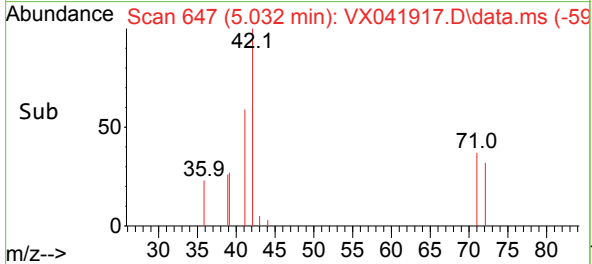
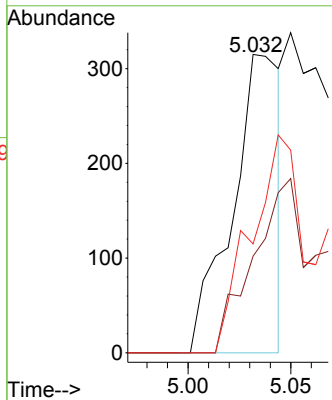
#29
 Tetrahydrofuran
 Concen: 0.668 ug/l
 RT: 5.032 min Scan# 647
 Delta R.T. 0.012 min
 Lab File: VX041917.D
 Acq: 18 Jun 2024 11:50

Instrument :
 MSVOA_X
 ClientSampleId :



Tgt Ion: 42 Resp: 514

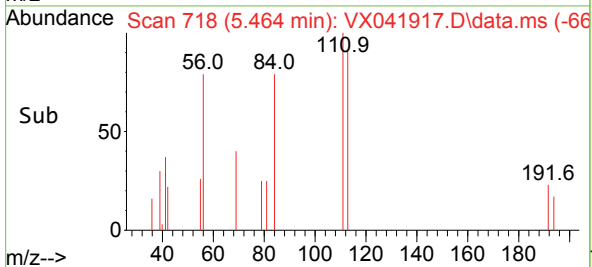
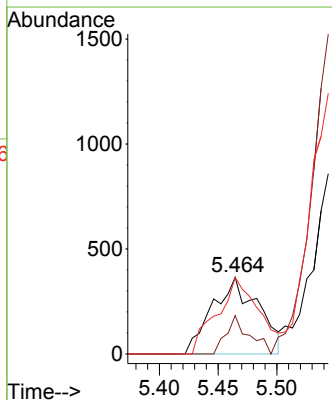
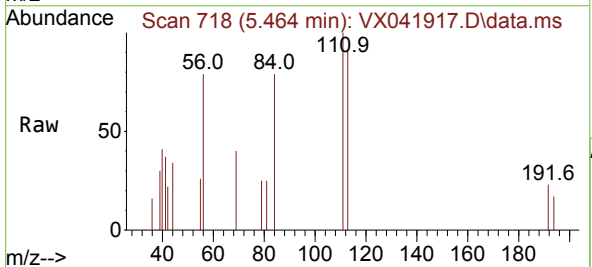
Ion	Ratio	Lower	Upper
42	100		
72	63.4	34.2	51.4#
71	94.9	32.2	48.2#

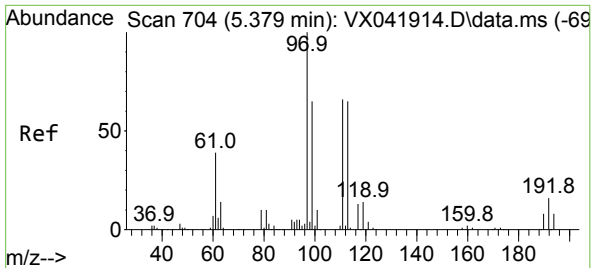


#31
 Cyclohexane
 Concen: 0.484 ug/l
 RT: 5.464 min Scan# 718
 Delta R.T. 0.000 min
 Lab File: VX041917.D
 Acq: 18 Jun 2024 11:50

Tgt Ion: 56 Resp: 988

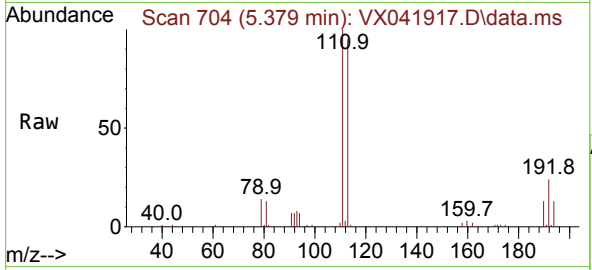
Ion	Ratio	Lower	Upper
56	100		
69	50.1	23.4	35.2#
84	99.7	65.9	98.9#





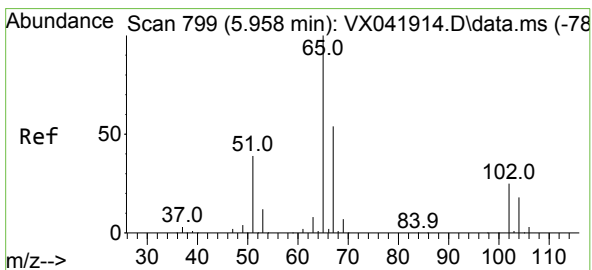
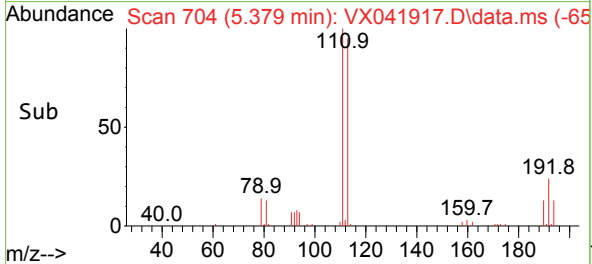
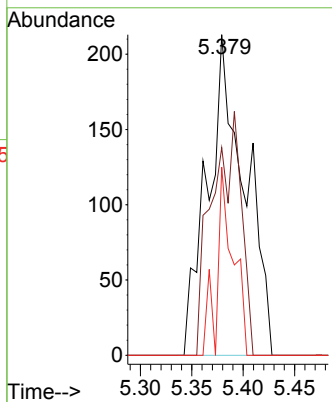
#32
 1,1,1-Trichloroethane
 Concen: 0.251 ug/l
 RT: 5.379 min Scan# 704
 Delta R.T. 0.000 min
 Lab File: VX041917.D
 Acq: 18 Jun 2024 11:50

Instrument : MSVOA_X
 ClientSampleId :



Tgt Ion: 97 Resp: 534

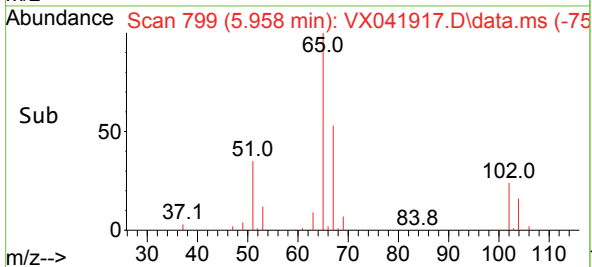
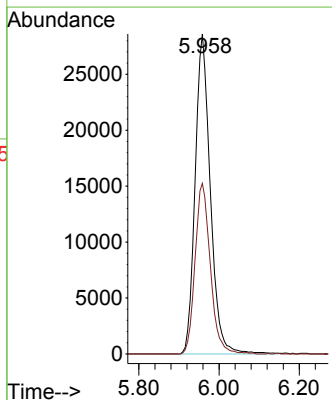
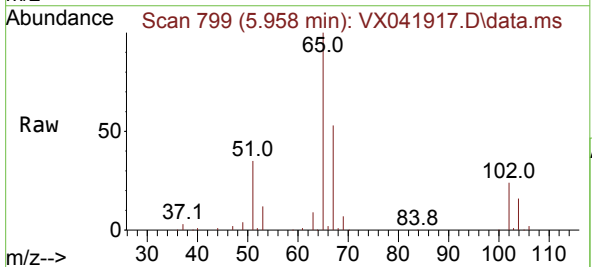
Ion	Ratio	Lower	Upper
97	100		
99	0.0	51.1	76.7#
61	25.8	36.4	54.6#

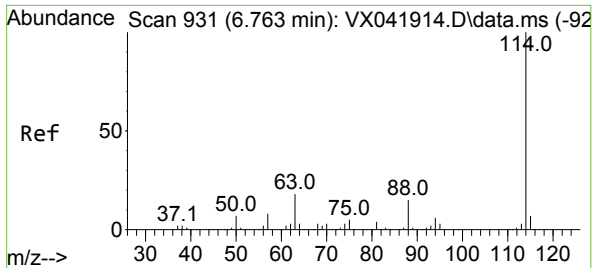


#33
 1,2-Dichloroethane-d4
 Concen: 43.162 ug/l
 RT: 5.958 min Scan# 799
 Delta R.T. 0.000 min
 Lab File: VX041917.D
 Acq: 18 Jun 2024 11:50

Tgt Ion: 65 Resp: 75269

Ion	Ratio	Lower	Upper
65	100		
67	53.6	0.0	100.2



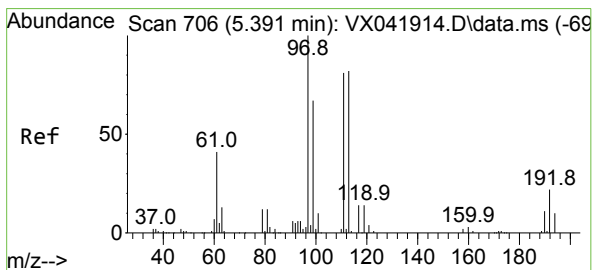
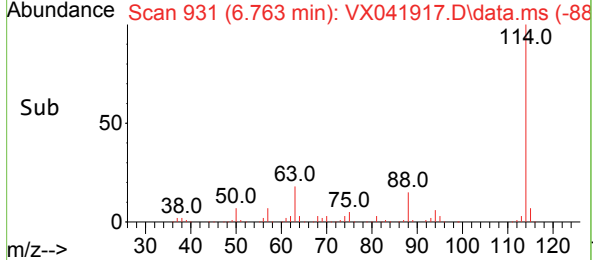
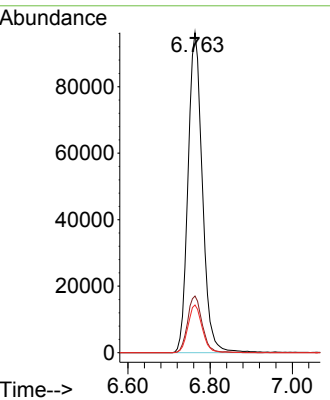
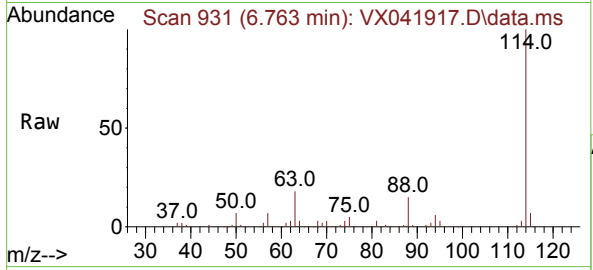


#34
 1,4-Difluorobenzene
 Concen: 50.000 ug/l
 RT: 6.763 min Scan# 91
 Delta R.T. 0.000 min
 Lab File: VX041917.D
 Acq: 18 Jun 2024 11:50

Instrument : MSVOA_X
 ClientSampleId :

Tgt Ion:114 Resp: 232646

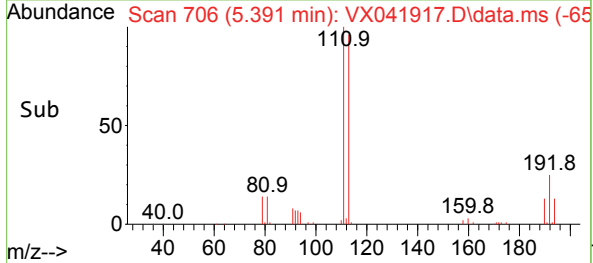
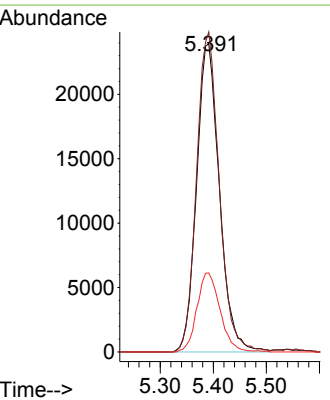
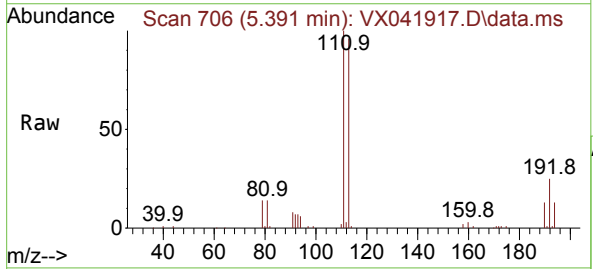
Ion	Ratio	Lower	Upper
114	100		
63	17.7	0.0	45.0
88	14.9	0.0	36.6

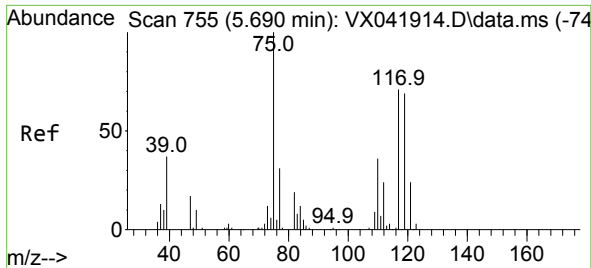


#35
 Dibromofluoromethane
 Concen: 43.399 ug/l
 RT: 5.391 min Scan# 706
 Delta R.T. 0.000 min
 Lab File: VX041917.D
 Acq: 18 Jun 2024 11:50

Tgt Ion:113 Resp: 71640

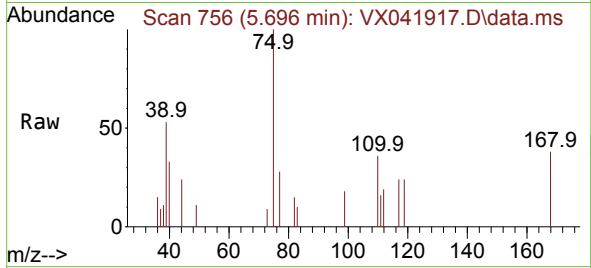
Ion	Ratio	Lower	Upper
113	100		
111	103.0	82.9	124.3
192	26.0	13.3	19.9#



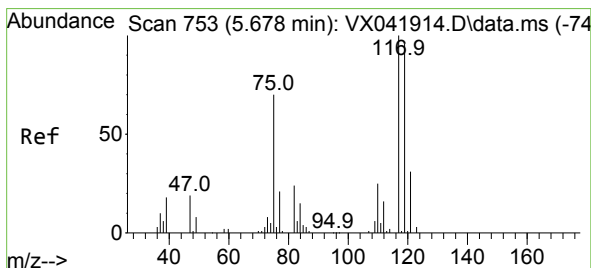
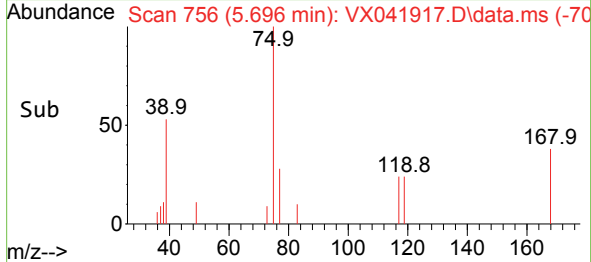
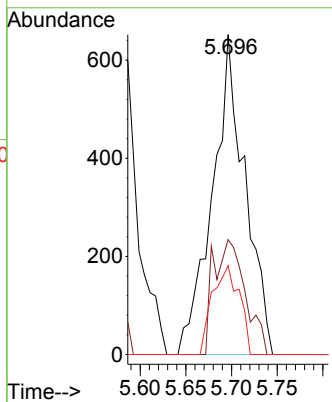


#36
 1,1-Dichloropropene
 Concen: 0.924 ug/l
 RT: 5.696 min Scan# 752
 Delta R.T. 0.006 min
 Lab File: VX041917.D
 Acq: 18 Jun 2024 11:50

Instrument : MSVOA_X
 ClientSampleId :

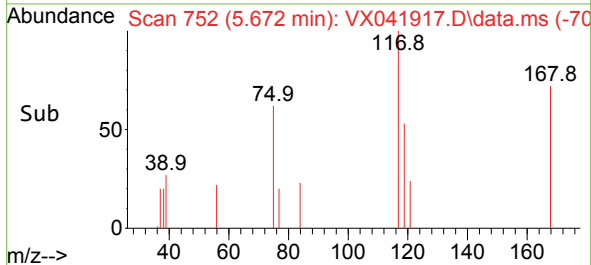
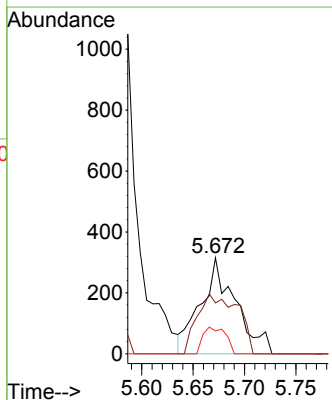
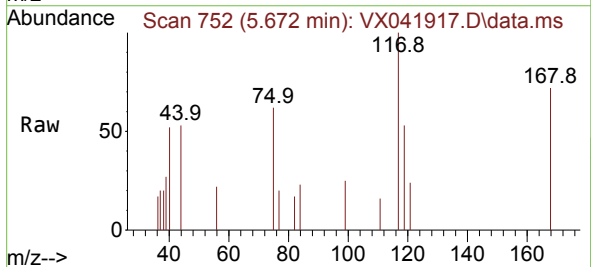


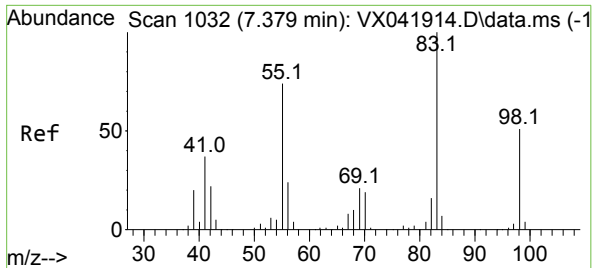
Tgt Ion: 75 Resp: 1619
 Ion Ratio Lower Upper
 75 100
 110 34.8 17.0 50.9
 77 22.9 24.7 37.1#



#38
 Carbon Tetrachloride
 Concen: 0.383 ug/l
 RT: 5.672 min Scan# 752
 Delta R.T. -0.006 min
 Lab File: VX041917.D
 Acq: 18 Jun 2024 11:50

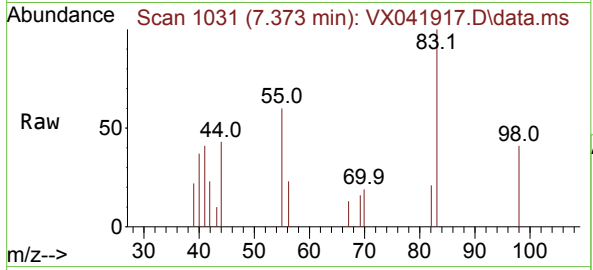
Tgt Ion: 117 Resp: 742
 Ion Ratio Lower Upper
 117 100
 119 53.0 78.2 117.2#
 121 23.8 24.4 36.6#





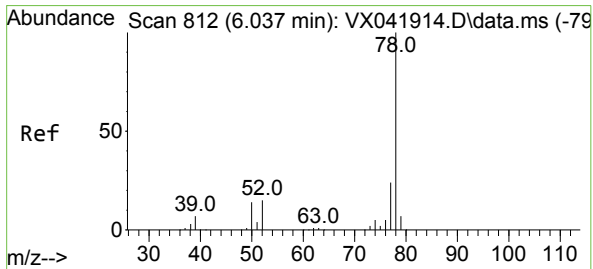
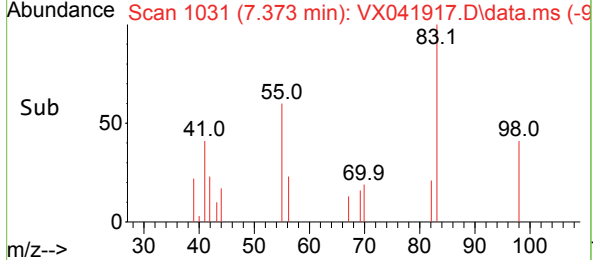
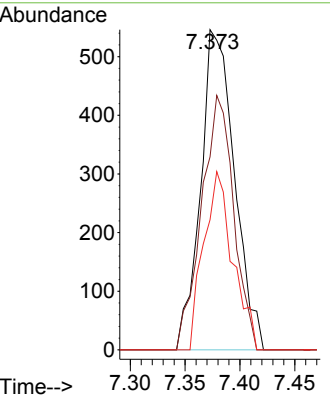
#39
 Methylcyclohexane
 Concen: 0.529 ug/l
 RT: 7.373 min Scan# 1031
 Delta R.T. -0.006 min
 Lab File: VX041917.D
 Acq: 18 Jun 2024 11:50

Instrument : MSVOA_X
 ClientSampleId :



Tgt Ion: 83 Resp: 1173

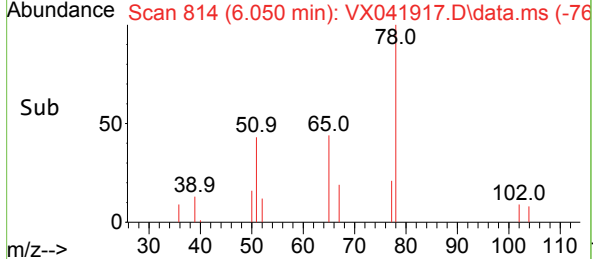
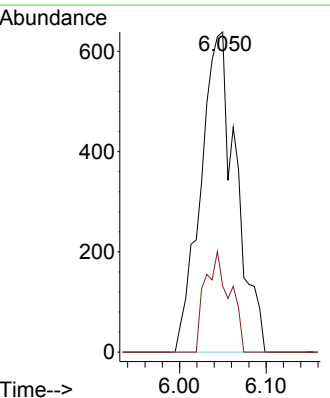
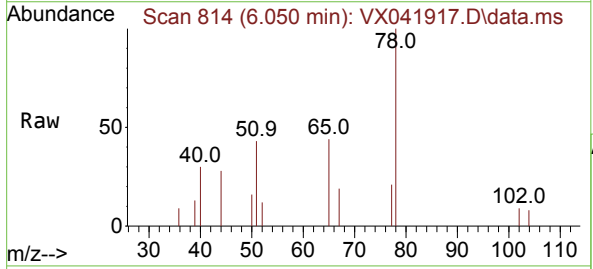
Ion	Ratio	Lower	Upper
83	100		
55	60.3	64.6	97.0#
98	40.7	36.7	55.1

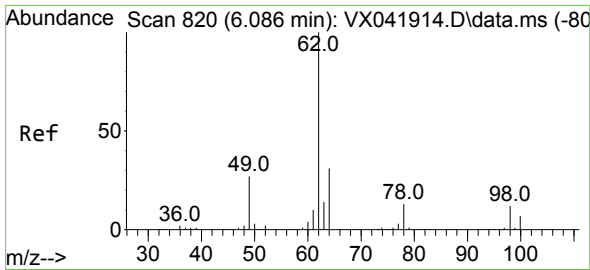


#40
 Benzene
 Concen: 0.306 ug/l
 RT: 6.050 min Scan# 814
 Delta R.T. 0.012 min
 Lab File: VX041917.D
 Acq: 18 Jun 2024 11:50

Tgt Ion: 78 Resp: 1810

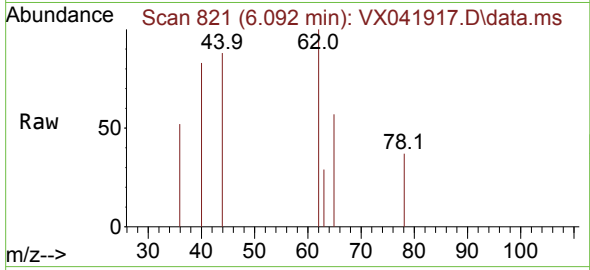
Ion	Ratio	Lower	Upper
78	100		
77	20.7	19.3	28.9



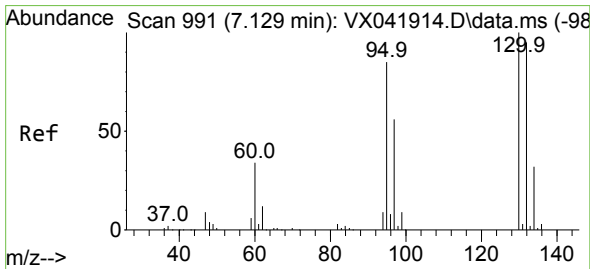
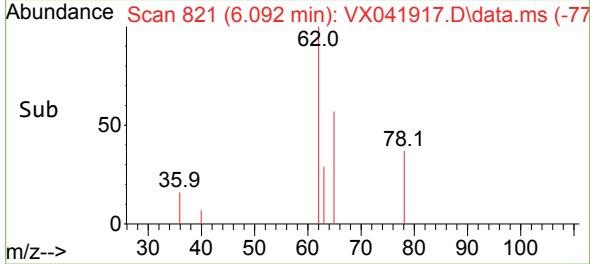
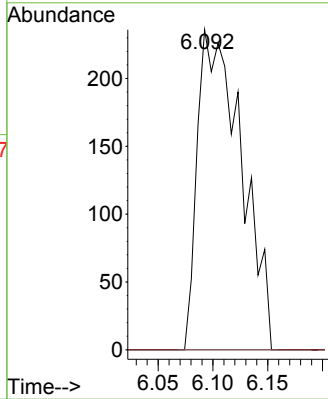


#42
 1,2-Dichloroethane
 Concen: 0.344 ug/l
 RT: 6.092 min Scan# 81
 Delta R.T. 0.006 min
 Lab File: VX041917.D
 Acq: 18 Jun 2024 11:50

Instrument :
 MSVOA_X
 ClientSampleId :

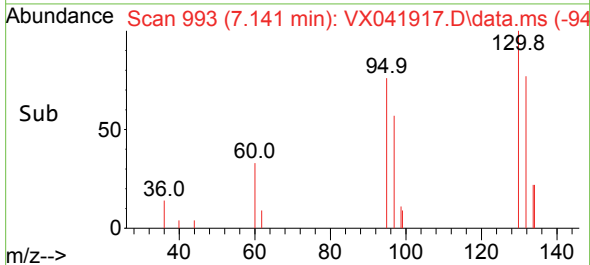
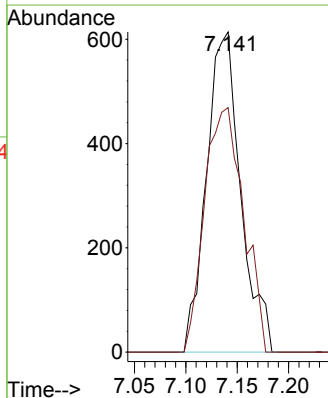
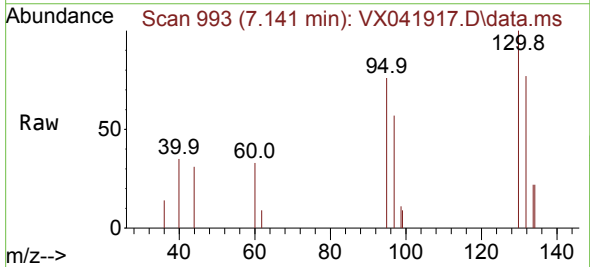


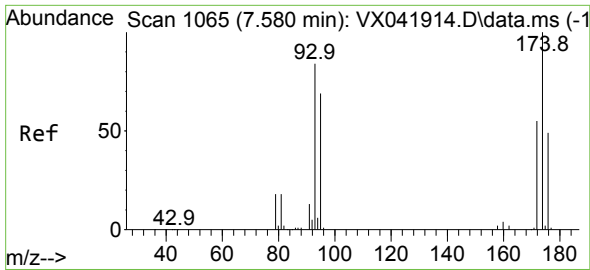
Tgt Ion: 62 Resp: 656
 Ion Ratio Lower Upper
 62 100
 98 0.0 0.0 16.0



#44
 Trichloroethene
 Concen: 0.895 ug/l
 RT: 7.141 min Scan# 993
 Delta R.T. 0.012 min
 Lab File: VX041917.D
 Acq: 18 Jun 2024 11:50

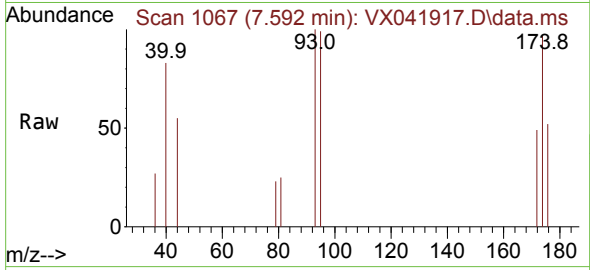
Tgt Ion: 130 Resp: 1418
 Ion Ratio Lower Upper
 130 100
 95 76.4 0.0 204.4





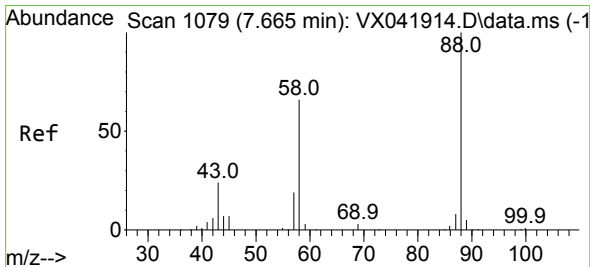
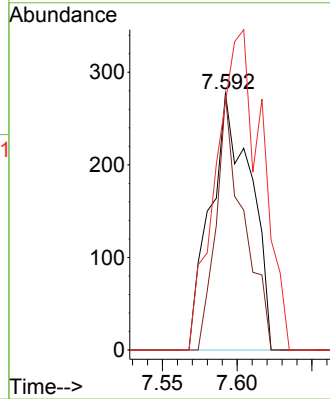
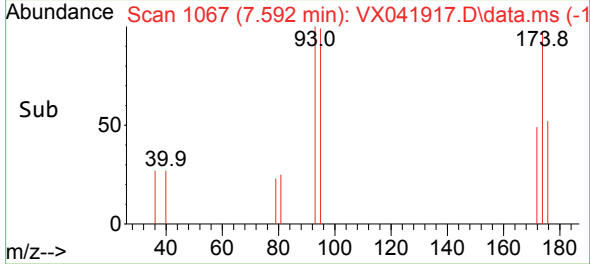
#46
 Dibromomethane
 Concen: 0.489 ug/l
 RT: 7.592 min Scan# 1067
 Delta R.T. 0.012 min
 Lab File: VX041917.D
 Acq: 18 Jun 2024 11:50

Instrument :
 MSVOA_X
 ClientSampleId :

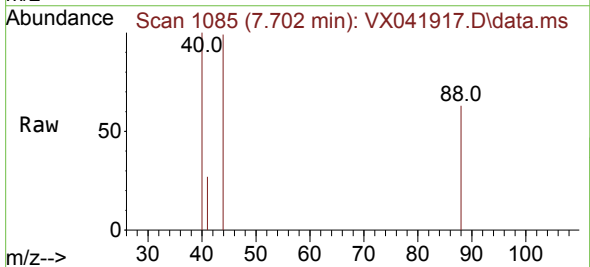


Tgt Ion: 93 Resp: 518

Ion	Ratio	Lower	Upper
93	100		
95	67.6	66.6	100.0
174	141.9	69.4	104.0#

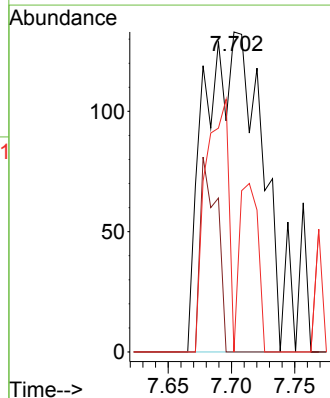
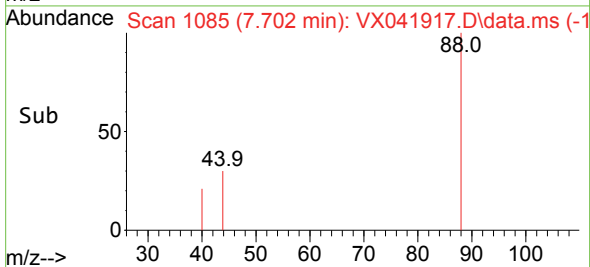


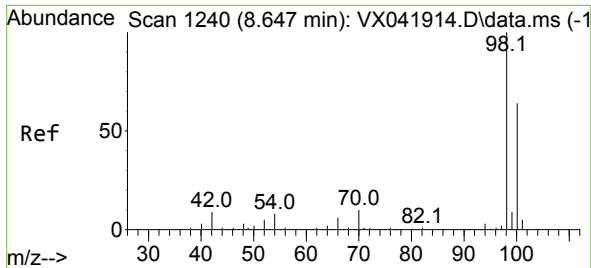
#49
 1,4-Dioxane
 Concen: 28.988 ug/l
 RT: 7.702 min Scan# 1085
 Delta R.T. 0.037 min
 Lab File: VX041917.D
 Acq: 18 Jun 2024 11:50



Tgt Ion: 88 Resp: 409

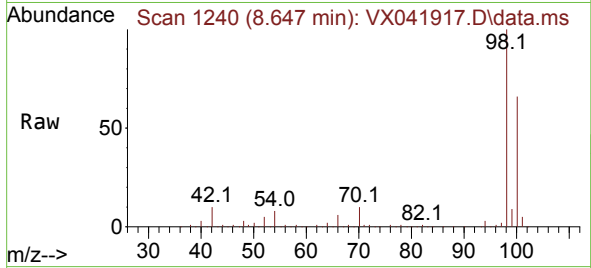
Ion	Ratio	Lower	Upper
88	100		
43	0.0	0.0	0.0
58	32.3	60.1	90.1#



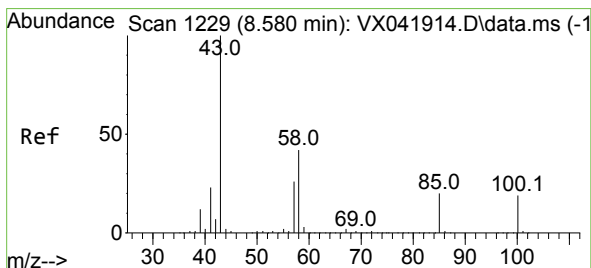
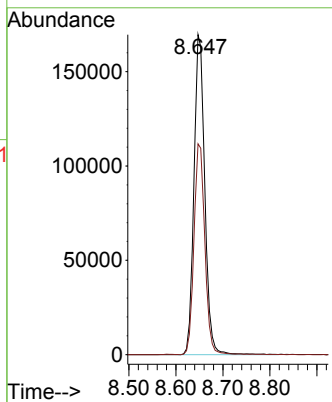
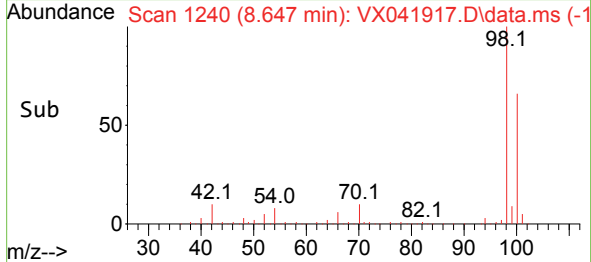


#50
 Toluene-d8
 Concen: 46.983 ug/l
 RT: 8.647 min Scan# 11
 Delta R.T. 0.000 min
 Lab File: VX041917.D
 Acq: 18 Jun 2024 11:50

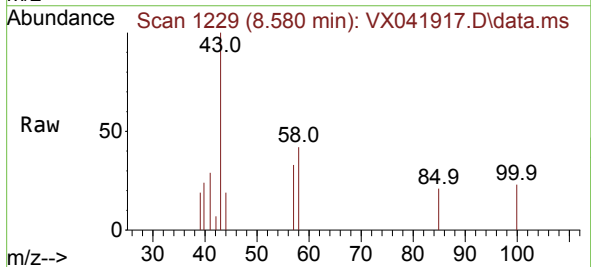
Instrument :
 MSVOA_X
 ClientSampleId :



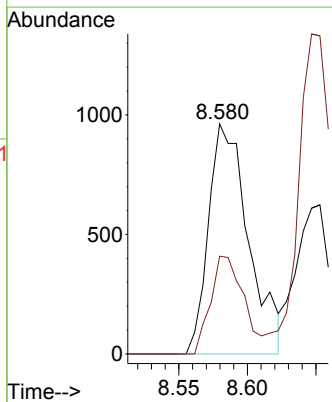
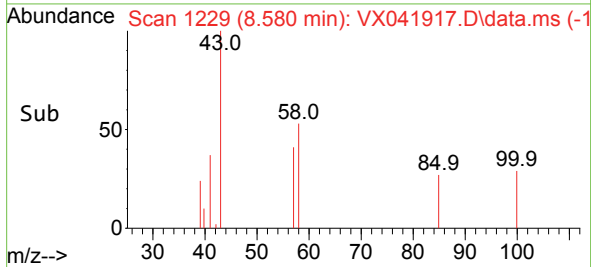
Tgt Ion: 98 Resp: 272464
 Ion Ratio Lower Upper
 98 100
 100 66.6 53.1 79.7

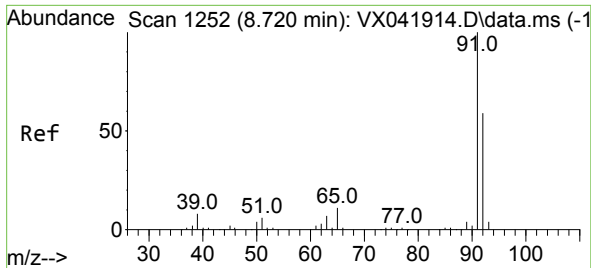


#51
 4-Methyl-2-Pentanone
 Concen: 0.810 ug/l
 RT: 8.580 min Scan# 1229
 Delta R.T. 0.000 min
 Lab File: VX041917.D
 Acq: 18 Jun 2024 11:50



Tgt Ion: 43 Resp: 1955
 Ion Ratio Lower Upper
 43 100
 58 35.1 30.4 45.6

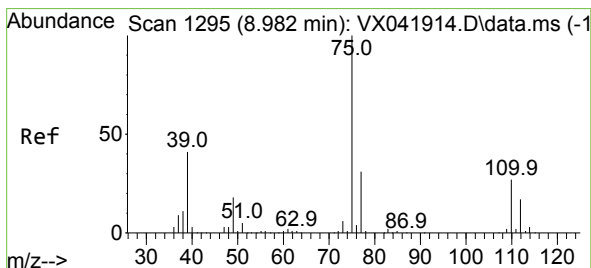
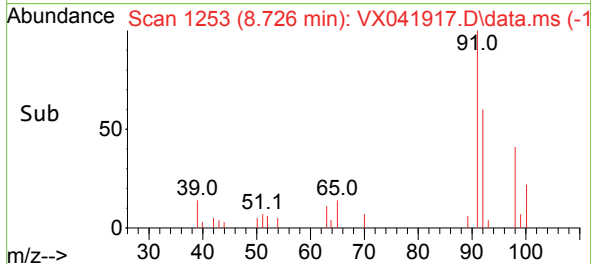
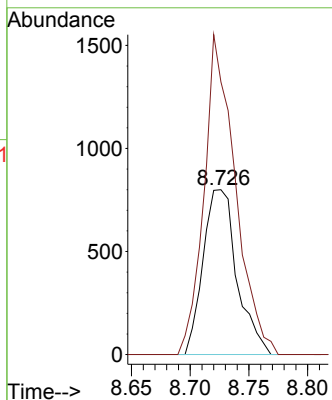
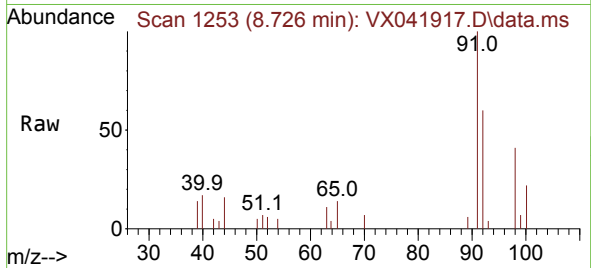




#52
 Toluene
 Concen: 0.426 ug/l
 RT: 8.726 min Scan# 1253
 Delta R.T. 0.006 min
 Lab File: VX041917.D
 Acq: 18 Jun 2024 11:50

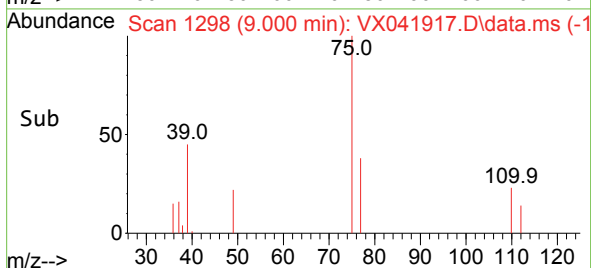
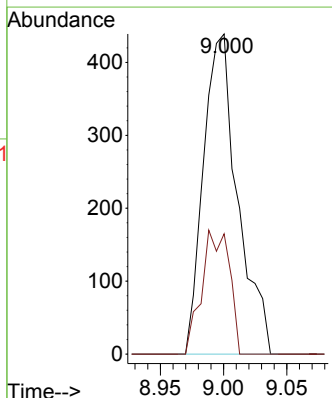
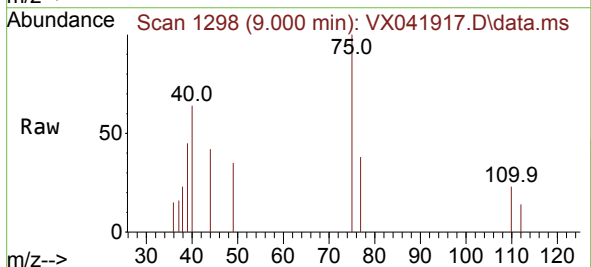
Instrument :
 MSVOA_X
 ClientSampleId :

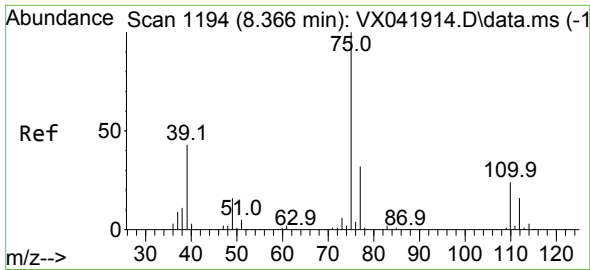
Tgt Ion: 92 Resp: 1603
 Ion Ratio Lower Upper
 92 100
 91 179.4 134.2 201.2



#53
 t-1,3-Dichloropropene
 Concen: 1.295 ug/l
 RT: 9.000 min Scan# 1298
 Delta R.T. 0.018 min
 Lab File: VX041917.D
 Acq: 18 Jun 2024 11:50

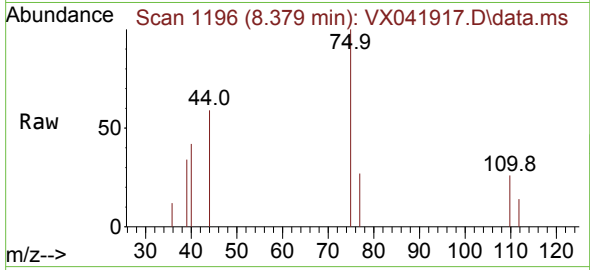
Tgt Ion: 75 Resp: 824
 Ion Ratio Lower Upper
 75 100
 77 37.6 25.7 38.5



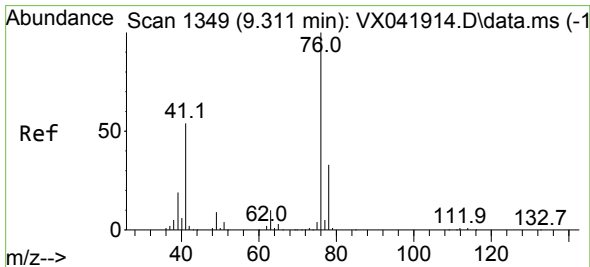
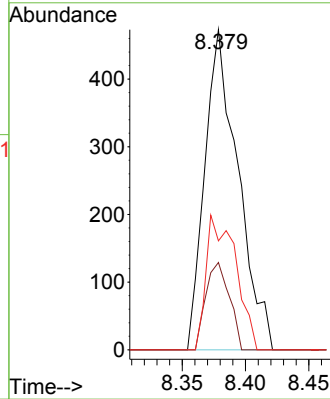
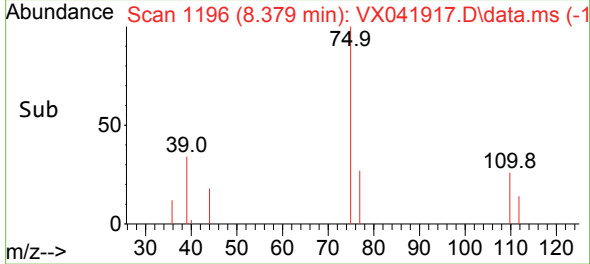


#54
 cis-1,3-Dichloropropene
 Concen: 0.406 ug/l
 RT: 8.379 min Scan# 1194
 Delta R.T. 0.012 min
 Lab File: VX041917.D
 Acq: 18 Jun 2024 11:50

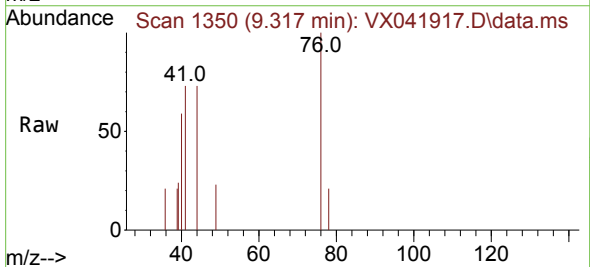
Instrument : MSVOA_X
 ClientSampleId :



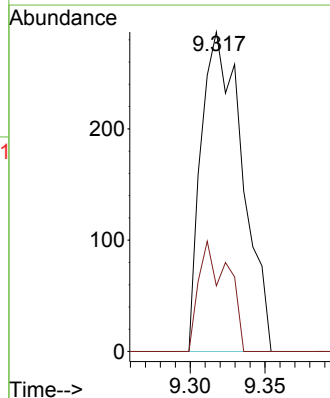
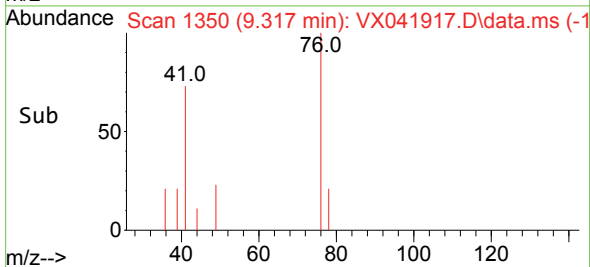
Tgt Ion: 75 Resp: 864
 Ion Ratio Lower Upper
 75 100
 77 27.3 25.3 37.9
 39 34.0 46.7 70.1#

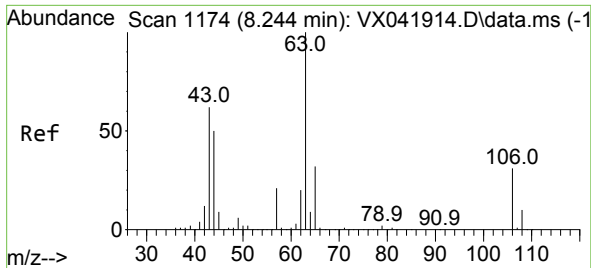


#57
 1,3-Dichloropropane
 Concen: 0.216 ug/l
 RT: 9.317 min Scan# 1350
 Delta R.T. 0.006 min
 Lab File: VX041917.D
 Acq: 18 Jun 2024 11:50



Tgt Ion: 76 Resp: 548
 Ion Ratio Lower Upper
 76 100
 78 24.6 26.1 39.1#

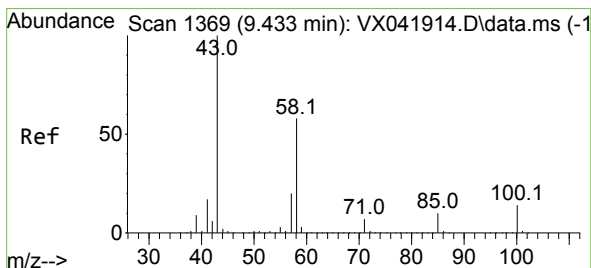
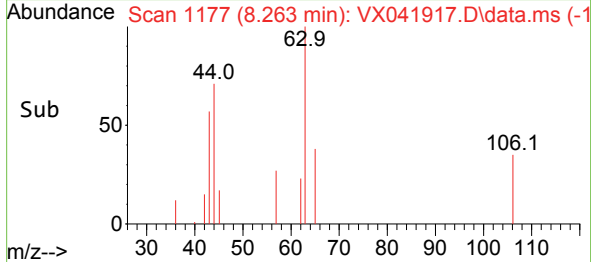
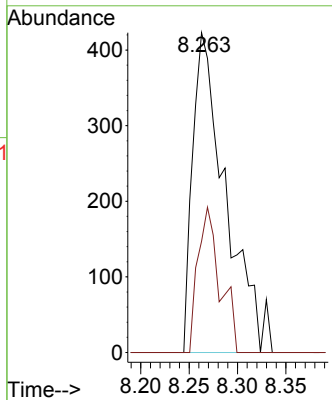
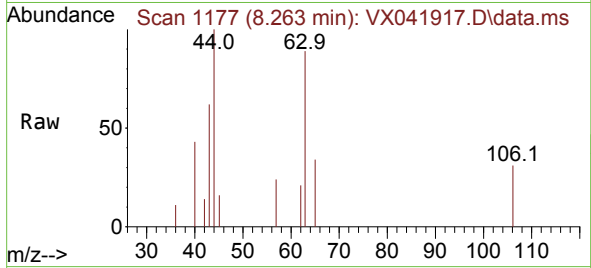




#58
 2-Chloroethyl Vinyl ether
 Concen: 0.887 ug/l
 RT: 8.263 min Scan# 1177
 Delta R.T. 0.018 min
 Lab File: VX041917.D
 Acq: 18 Jun 2024 11:50

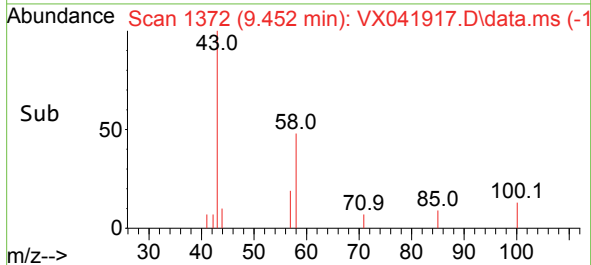
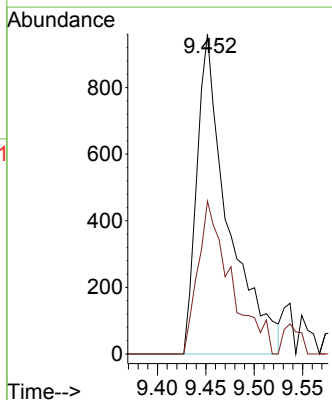
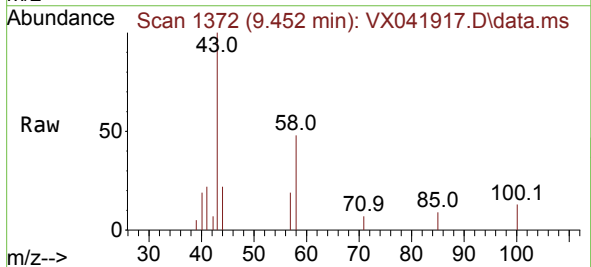
Instrument : MSVOA_X
 ClientSampleId :

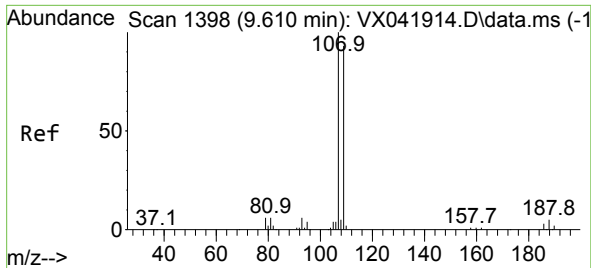
Tgt Ion: 63 Resp: 1009
 Ion Ratio Lower Upper
 63 100
 106 30.3 22.5 33.7



#59
 2-Hexanone
 Concen: 1.159 ug/l
 RT: 9.452 min Scan# 1372
 Delta R.T. 0.018 min
 Lab File: VX041917.D
 Acq: 18 Jun 2024 11:50

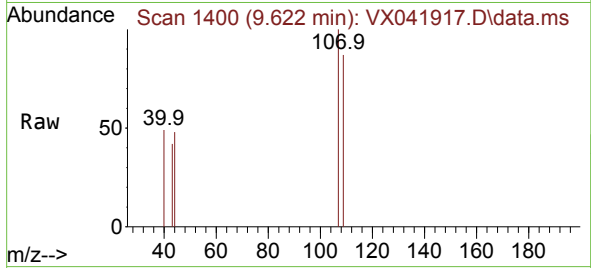
Tgt Ion: 43 Resp: 2144
 Ion Ratio Lower Upper
 43 100
 58 50.5 26.2 78.5



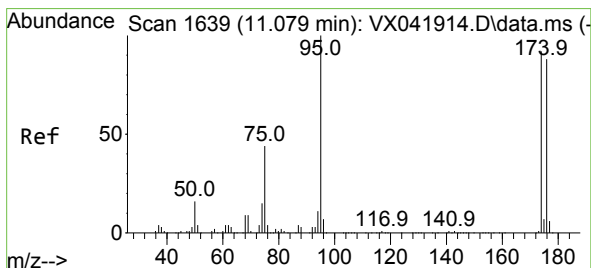
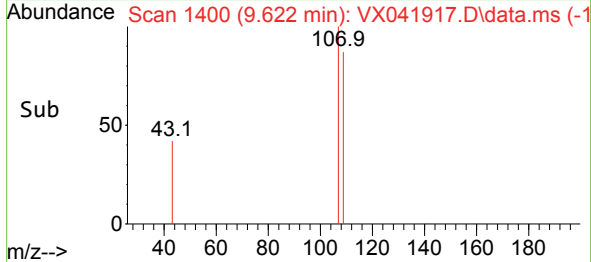
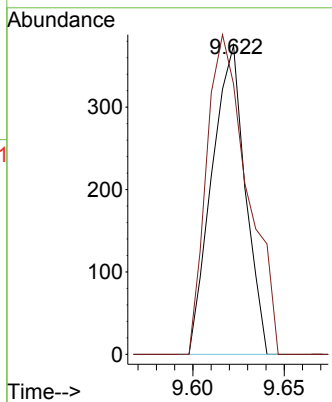


#61
 1,2-Dibromoethane
 Concen: 0.294 ug/l
 RT: 9.622 min Scan# 1400
 Delta R.T. 0.012 min
 Lab File: VX041917.D
 Acq: 18 Jun 2024 11:50

Instrument : MSVOA_X
 ClientSampleId :

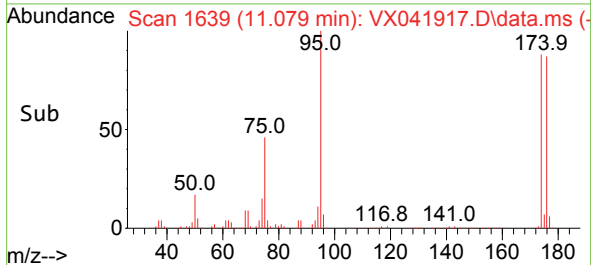
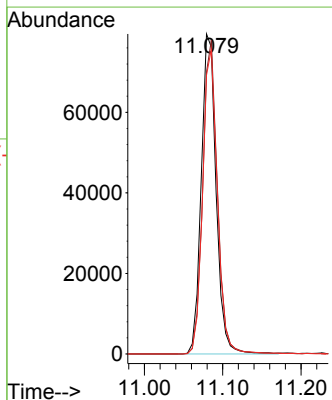
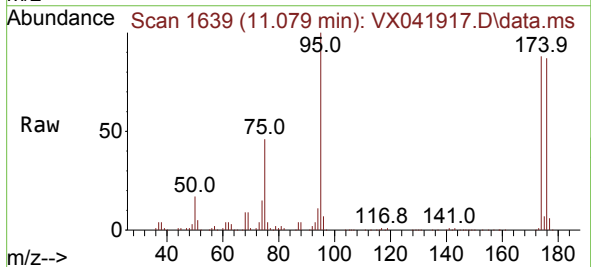


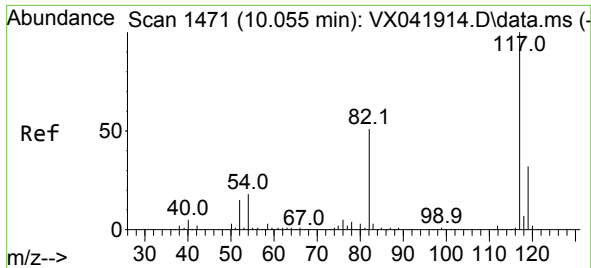
Tgt Ion:107 Resp: 478
 Ion Ratio Lower Upper
 107 100
 109 126.6 75.2 112.8#



#62
 4-Bromofluorobenzene
 Concen: 48.998 ug/l
 RT: 11.079 min Scan# 1639
 Delta R.T. 0.000 min
 Lab File: VX041917.D
 Acq: 18 Jun 2024 11:50

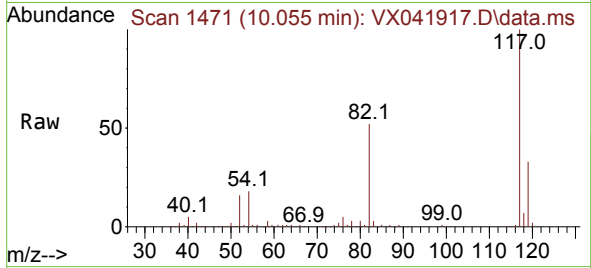
Tgt Ion: 95 Resp: 104744
 Ion Ratio Lower Upper
 95 100
 174 96.5 0.0 135.6
 176 94.7 0.0 131.0



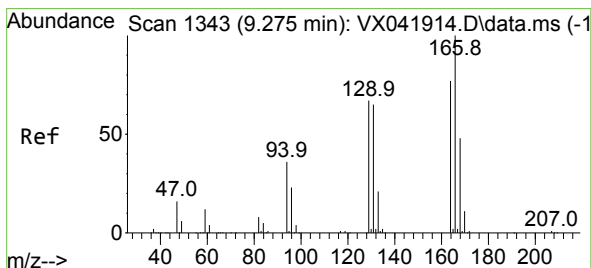
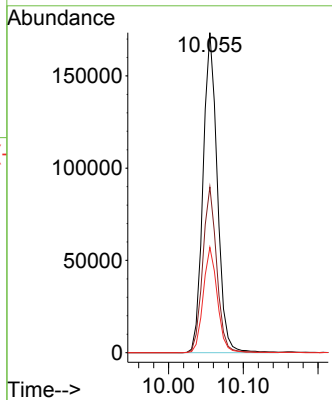
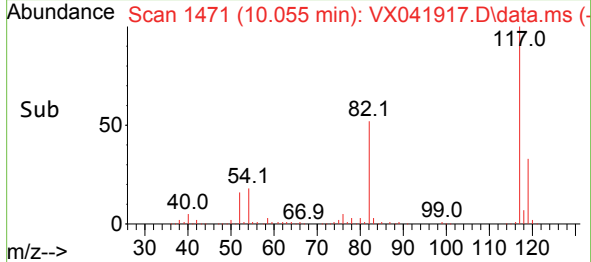


#63
 Chlorobenzene-d5
 Concen: 50.000 ug/l
 RT: 10.055 min Scan# 1471
 Delta R.T. 0.000 min
 Lab File: VX041917.D
 Acq: 18 Jun 2024 11:50

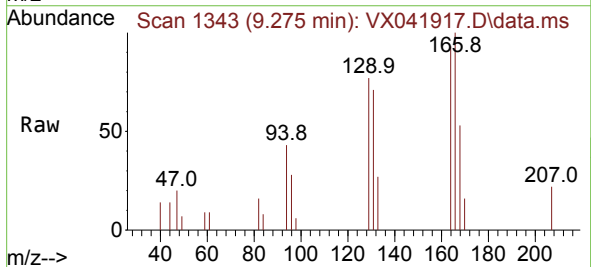
Instrument : MSVOA_X
 ClientSampleId :



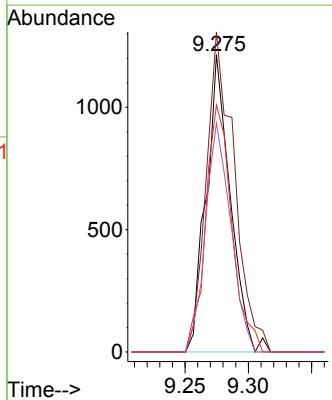
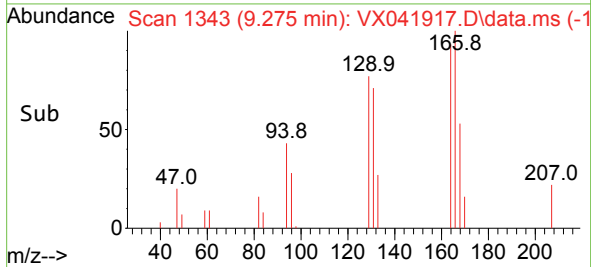
Tgt Ion:117 Resp: 229917
 Ion Ratio Lower Upper
 117 100
 82 51.8 46.2 69.4
 119 32.9 25.5 38.3

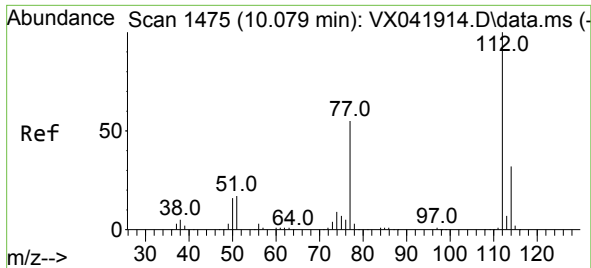


#64
 Tetrachloroethene
 Concen: 0.967 ug/l
 RT: 9.275 min Scan# 1343
 Delta R.T. 0.000 min
 Lab File: VX041917.D
 Acq: 18 Jun 2024 11:50



Tgt Ion:164 Resp: 1619
 Ion Ratio Lower Upper
 164 100
 166 107.7 102.7 154.1
 129 83.1 80.4 120.6
 131 77.0 76.5 114.7

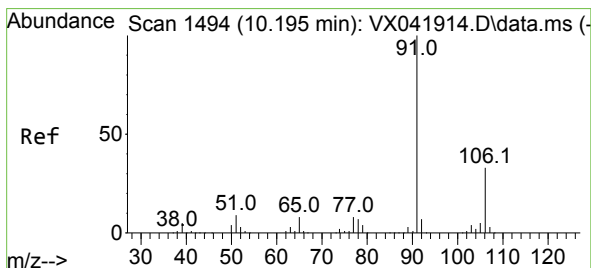
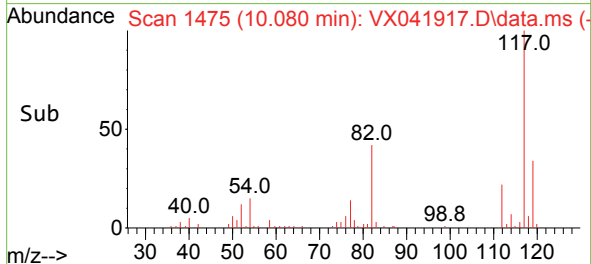
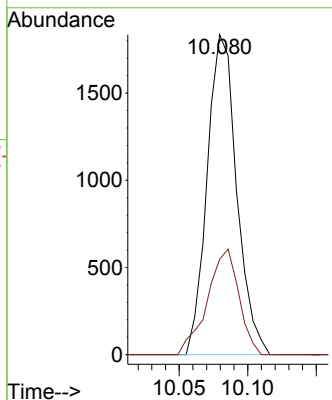
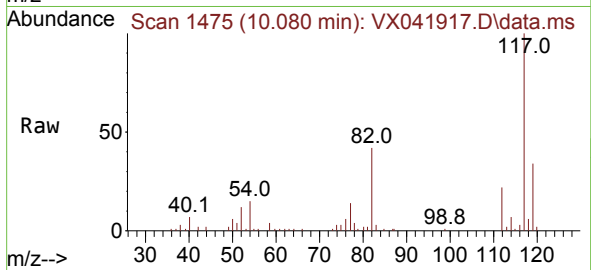




#65
 Chlorobenzene
 Concen: 0.576 ug/l
 RT: 10.080 min Scan# 1475
 Delta R.T. 0.000 min
 Lab File: VX041917.D
 Acq: 18 Jun 2024 11:50

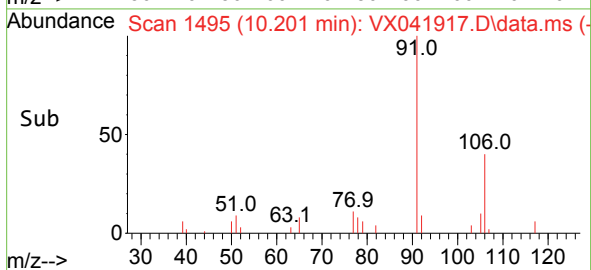
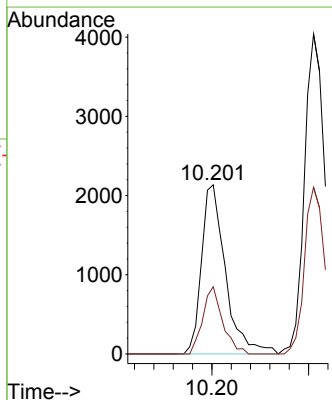
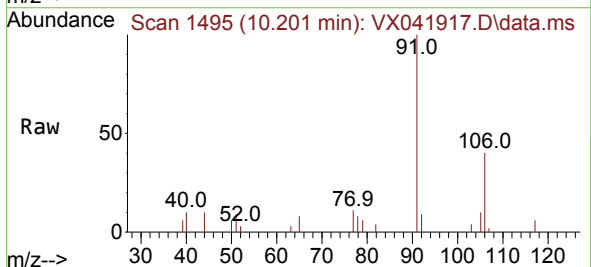
Instrument : MSVOA_X
 ClientSampleId :

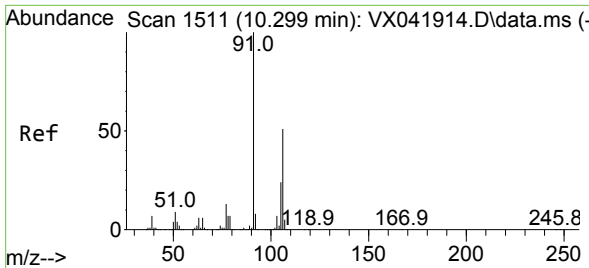
Tgt Ion:112 Resp: 2753
 Ion Ratio Lower Upper
 112 100
 114 29.8 25.7 38.5



#67
 Ethyl Benzene
 Concen: 0.492 ug/l
 RT: 10.201 min Scan# 1495
 Delta R.T. 0.006 min
 Lab File: VX041917.D
 Acq: 18 Jun 2024 11:50

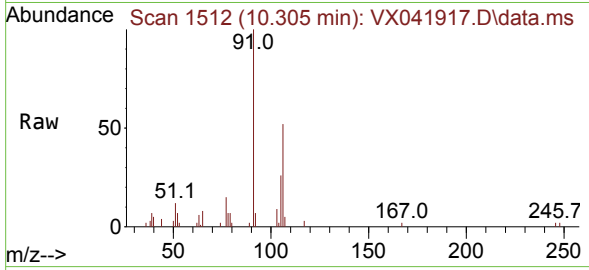
Tgt Ion: 91 Resp: 3690
 Ion Ratio Lower Upper
 91 100
 106 39.7 24.9 37.3#



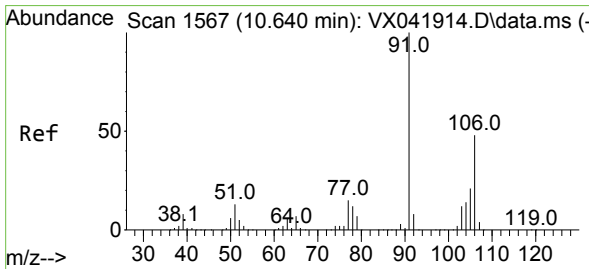
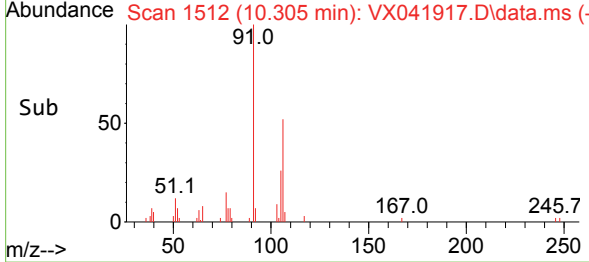
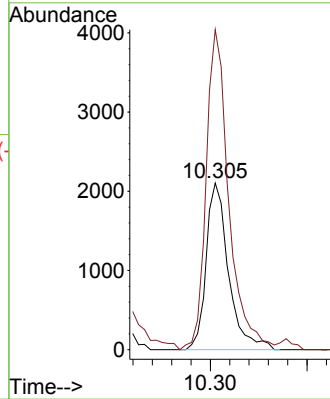


#68
 m/p-Xylenes
 Concen: 1.118 ug/l
 RT: 10.305 min Scan# 1512
 Delta R.T. 0.006 min
 Lab File: VX041917.D
 Acq: 18 Jun 2024 11:50

Instrument : MSVOA_X
 ClientSampleId :

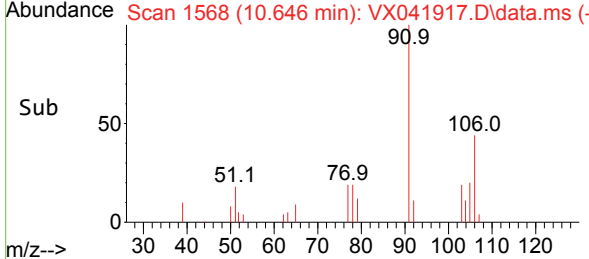
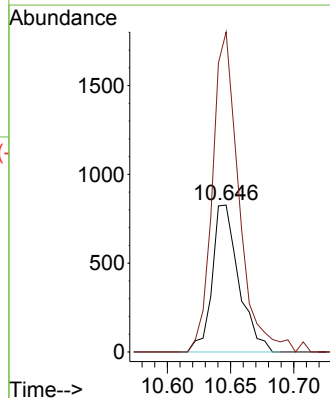
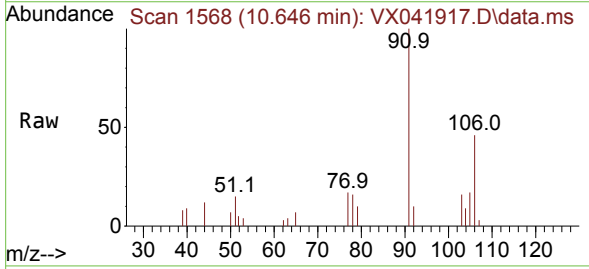


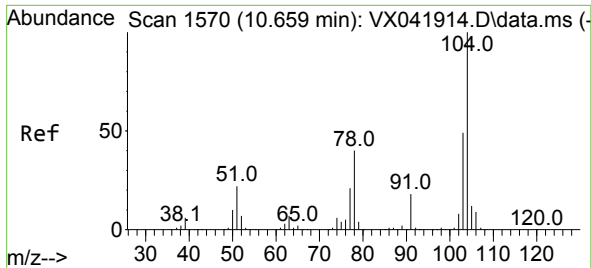
Tgt Ion:106 Resp: 3382
 Ion Ratio Lower Upper
 106 100
 91 194.4 165.5 248.3



#69
 o-Xylene
 Concen: 0.405 ug/l
 RT: 10.646 min Scan# 1568
 Delta R.T. 0.006 min
 Lab File: VX041917.D
 Acq: 18 Jun 2024 11:50

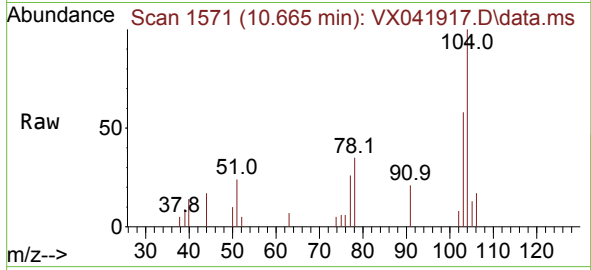
Tgt Ion:106 Resp: 1213
 Ion Ratio Lower Upper
 106 100
 91 217.7 108.9 326.8



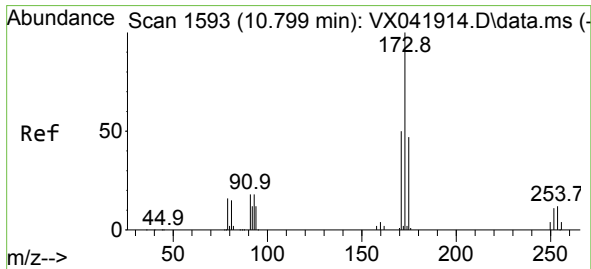
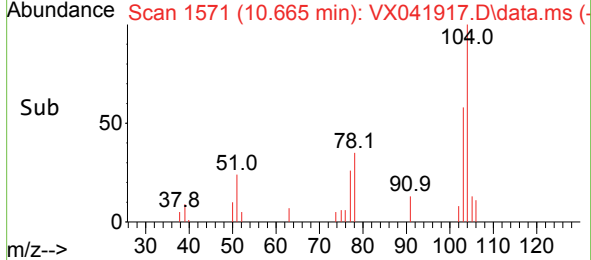
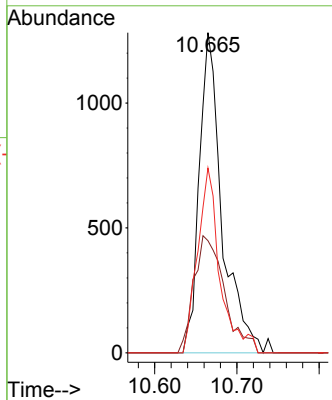


#70
 Styrene
 Concen: 0.493 ug/l
 RT: 10.665 min Scan# 1571
 Delta R.T. 0.006 min
 Lab File: VX041917.D
 Acq: 18 Jun 2024 11:50

Instrument :
 MSVOA_X
 ClientSampleId :

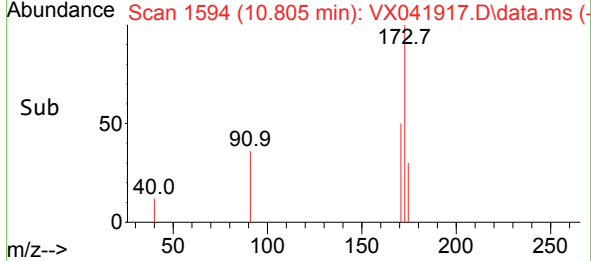
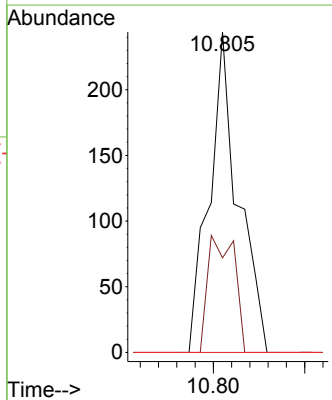
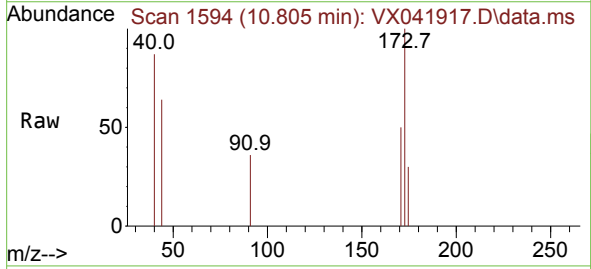


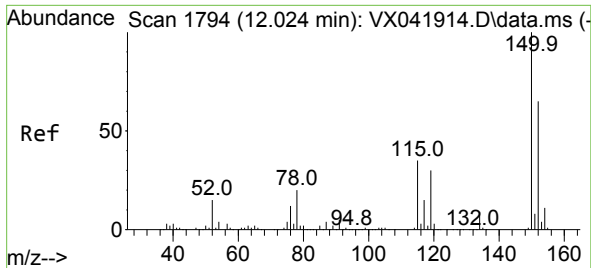
Tgt Ion:104 Resp: 2478
 Ion Ratio Lower Upper
 104 100
 78 48.9 43.6 65.4
 103 56.5 43.6 65.4



#71
 Bromoform
 Concen: 1.045 ug/l
 RT: 10.805 min Scan# 1594
 Delta R.T. 0.006 min
 Lab File: VX041917.D
 Acq: 18 Jun 2024 11:50

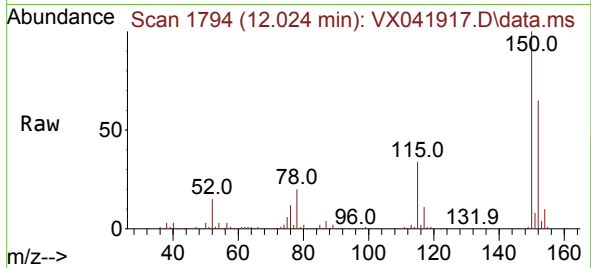
Tgt Ion:173 Resp: 267
 Ion Ratio Lower Upper
 173 100
 175 0.0 24.1 72.4#
 254 0.0 0.0 0.0



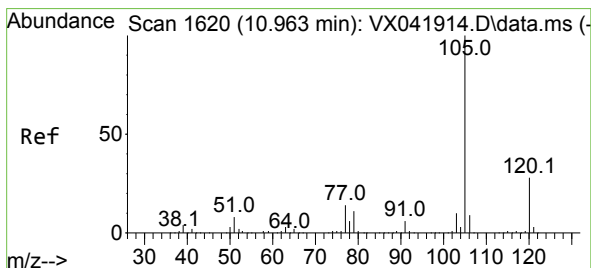
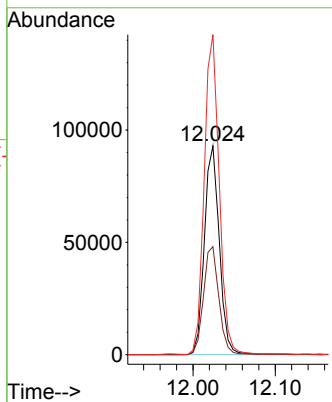
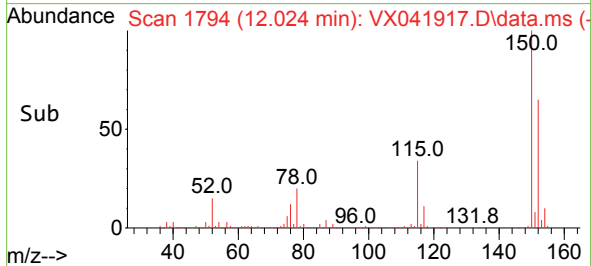


#72
 1,4-Dichlorobenzene-d4
 Concen: 50.000 ug/l
 RT: 12.024 min Scan# 1
 Delta R.T. 0.000 min
 Lab File: VX041917.D
 Acq: 18 Jun 2024 11:50

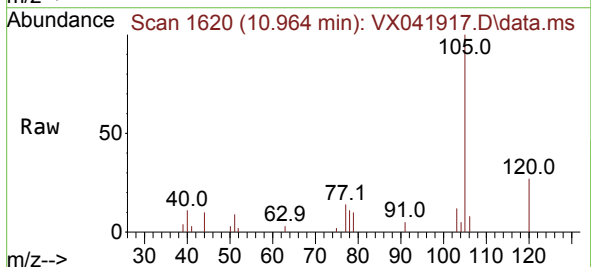
Instrument :
 MSVOA_X
 ClientSampleId :



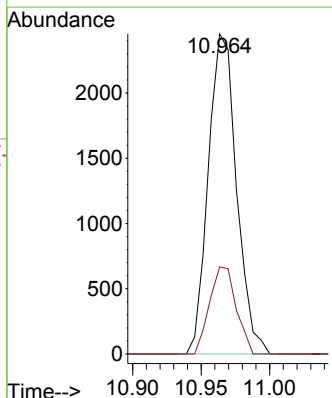
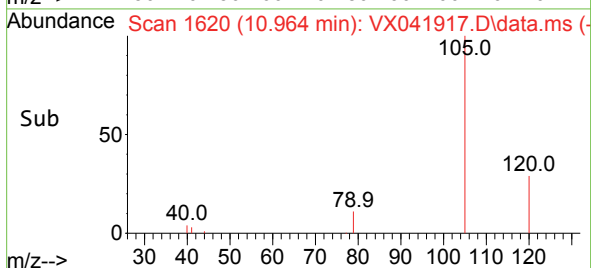
Tgt Ion:152 Resp: 117406
 Ion Ratio Lower Upper
 152 100
 115 53.3 43.3 129.9
 150 153.6 0.0 345.0

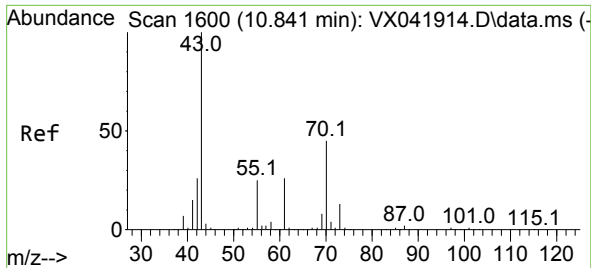


#73
 Isopropylbenzene
 Concen: 0.492 ug/l
 RT: 10.964 min Scan# 1620
 Delta R.T. 0.000 min
 Lab File: VX041917.D
 Acq: 18 Jun 2024 11:50



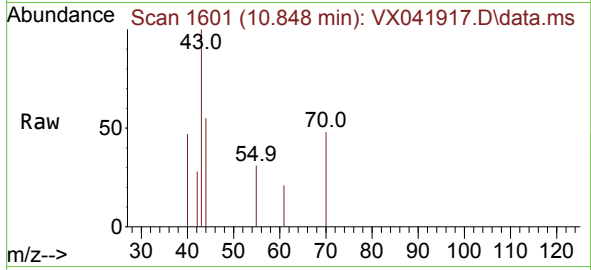
Tgt Ion:105 Resp: 3515
 Ion Ratio Lower Upper
 105 100
 120 25.5 12.9 38.6





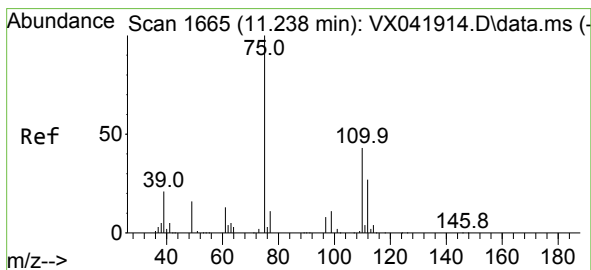
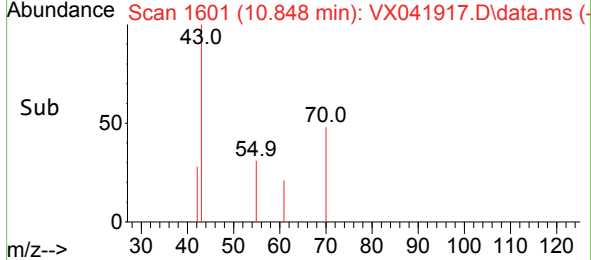
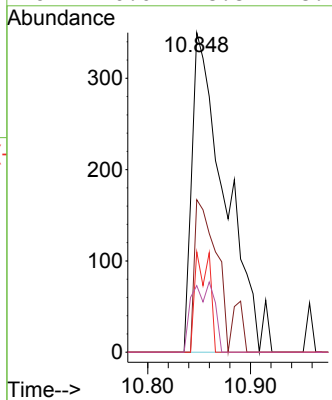
#74
 N-amy1 acetate
 Concen: 0.248 ug/l
 RT: 10.848 min Scan# 1601
 Delta R.T. 0.006 min
 Lab File: VX041917.D
 Acq: 18 Jun 2024 11:50

Instrument : MSVOA_X
 ClientSampleId :



Tgt Ion: 43 Resp: 786

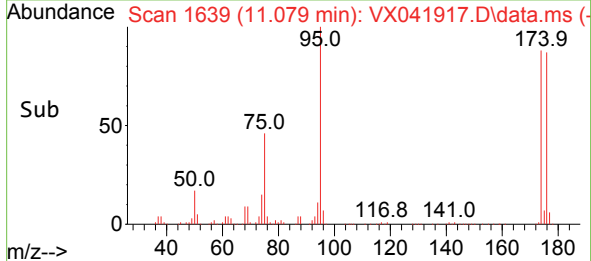
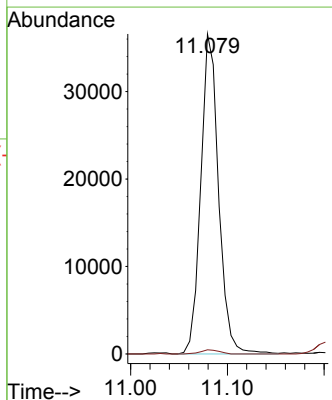
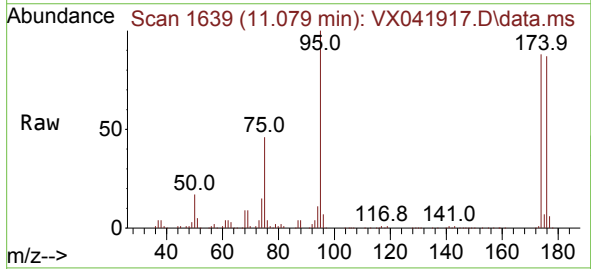
Ion	Ratio	Lower	Upper
43	100		
70	35.8	32.9	49.3
55	13.6	19.3	28.9#
61	0.0	18.8	28.2#

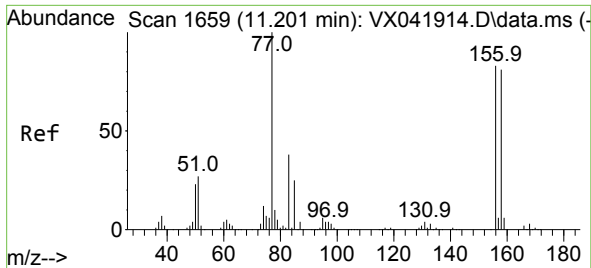


#76
 1,2,3-Trichloropropane
 Concen: 22.038 ug/l
 RT: 11.079 min Scan# 1639
 Delta R.T. -0.158 min
 Lab File: VX041917.D
 Acq: 18 Jun 2024 11:50

Tgt Ion: 75 Resp: 46972

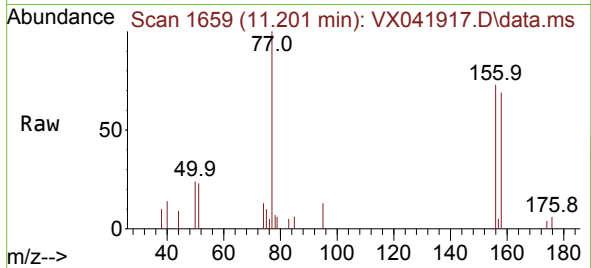
Ion	Ratio	Lower	Upper
75	100		
77	1.4	19.1	57.5#





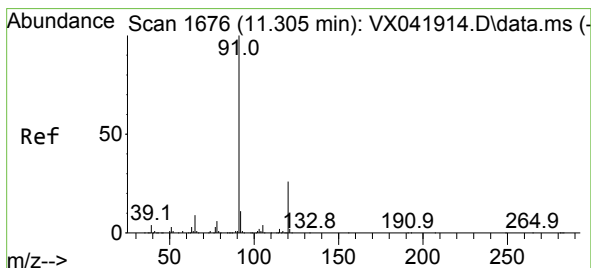
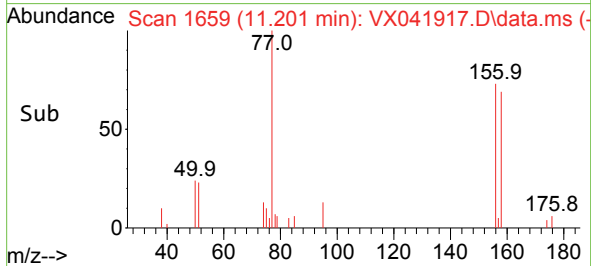
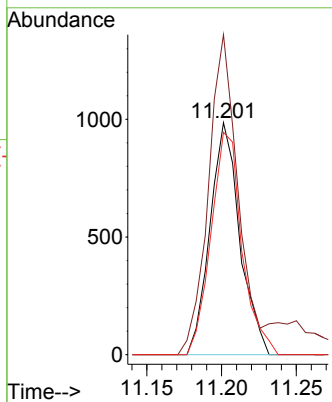
#77
 Bromobenzene
 Concen: 0.641 ug/l
 RT: 11.201 min Scan# 1659
 Delta R.T. 0.000 min
 Lab File: VX041917.D
 Acq: 18 Jun 2024 11:50

Instrument : MSVOA_X
 ClientSampleId :



Tgt Ion: 156 Resp: 1362

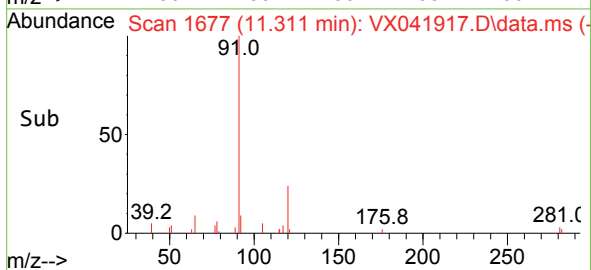
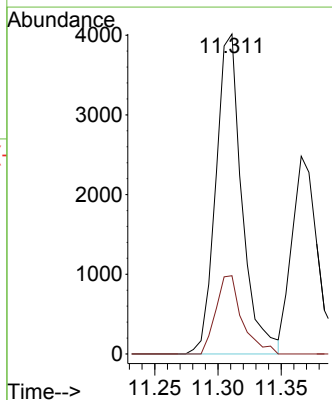
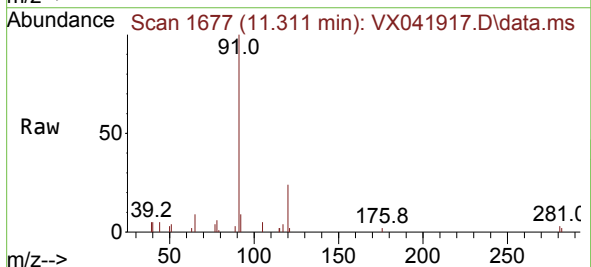
Ion	Ratio	Lower	Upper
156	100		
77	140.1	88.4	265.3
158	99.9	48.0	144.0

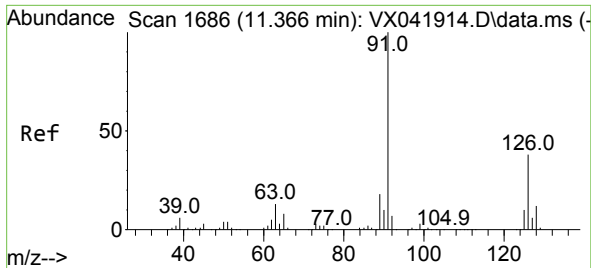


#78
 n-propylbenzene
 Concen: 0.744 ug/l
 RT: 11.311 min Scan# 1677
 Delta R.T. 0.006 min
 Lab File: VX041917.D
 Acq: 18 Jun 2024 11:50

Tgt Ion: 91 Resp: 5763

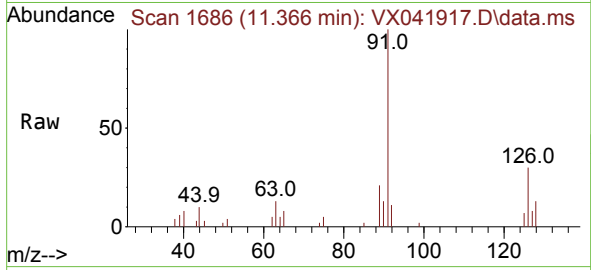
Ion	Ratio	Lower	Upper
91	100		
120	24.6	11.5	34.4



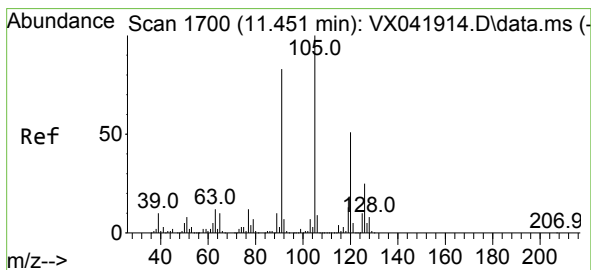
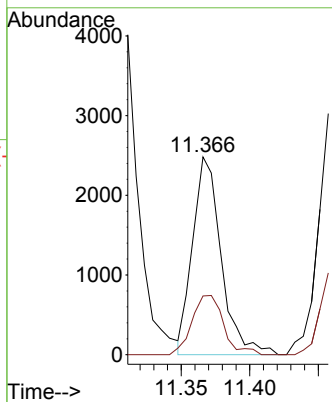
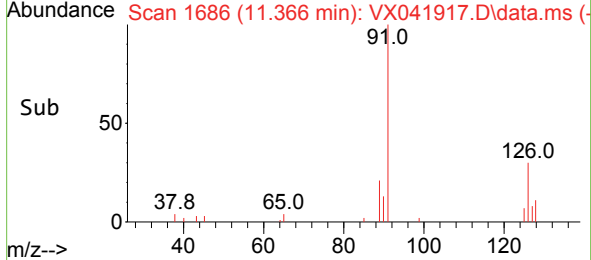


#79
 2-Chlorotoluene
 Concen: 0.722 ug/l
 RT: 11.366 min Scan# 1
 Delta R.T. 0.000 min
 Lab File: VX041917.D
 Acq: 18 Jun 2024 11:50

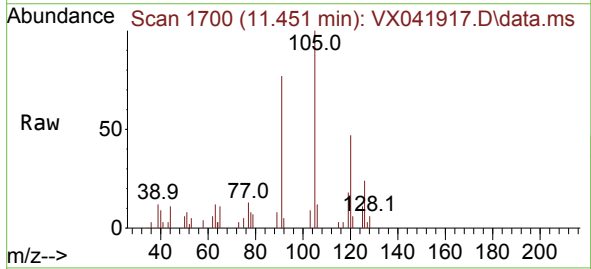
Instrument :
 MSVOA_X
 ClientSampleId :



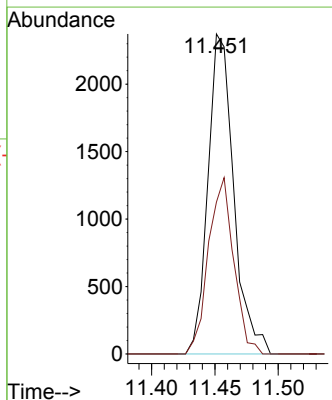
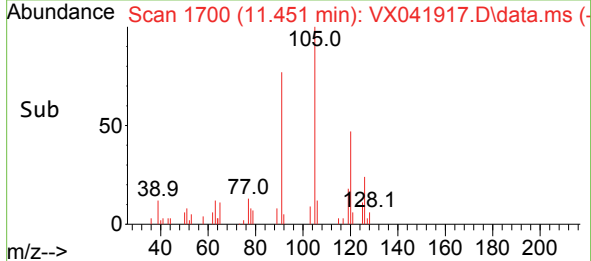
Tgt Ion: 91 Resp: 3604
 Ion Ratio Lower Upper
 91 100
 126 33.1 16.3 48.8

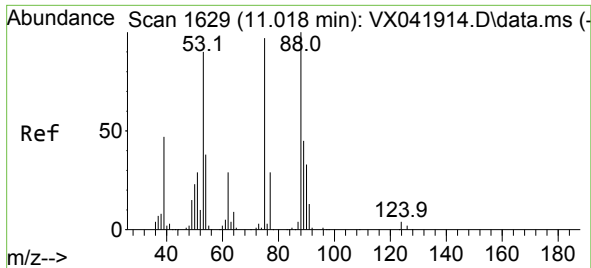


#80
 1,3,5-Trimethylbenzene
 Concen: 0.565 ug/l
 RT: 11.451 min Scan# 1700
 Delta R.T. 0.000 min
 Lab File: VX041917.D
 Acq: 18 Jun 2024 11:50



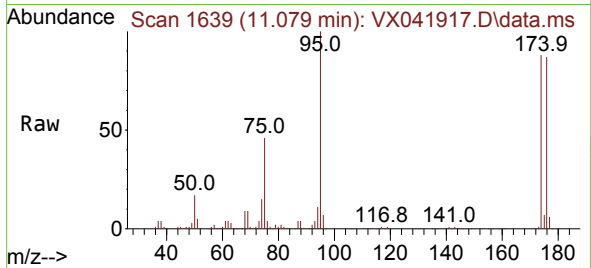
Tgt Ion: 105 Resp: 3362
 Ion Ratio Lower Upper
 105 100
 120 54.1 24.1 72.3



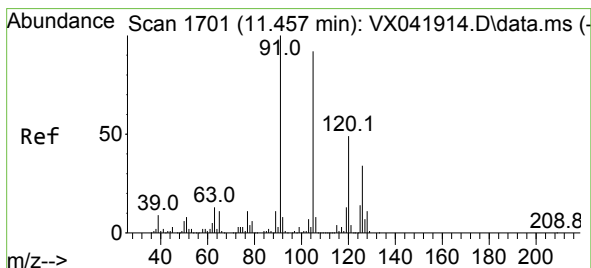
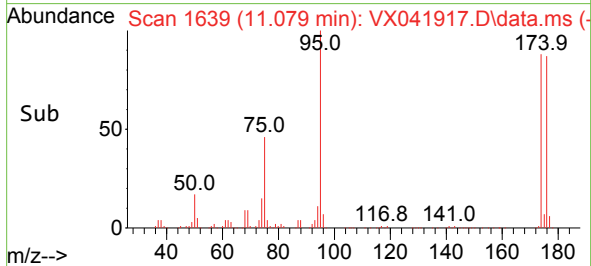
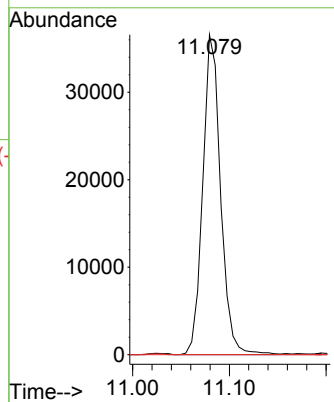


#81
 trans-1,4-Dichloro-2-butene
 Concen: 62.586 ug/l
 RT: 11.079 min Scan# 1639
 Delta R.T. 0.061 min
 Lab File: VX041917.D
 Acq: 18 Jun 2024 11:50

Instrument : MSVOA_X
 ClientSampleId :

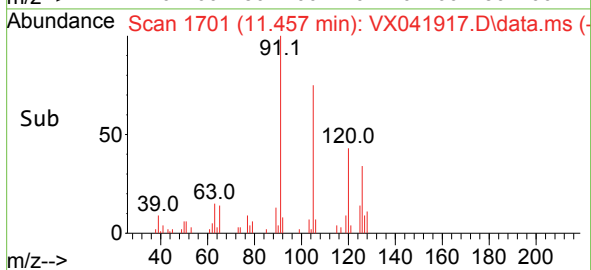
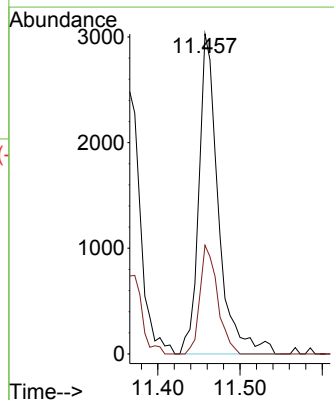
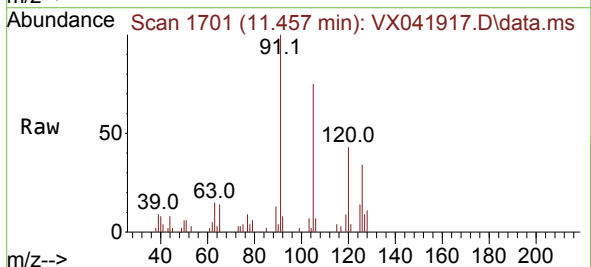


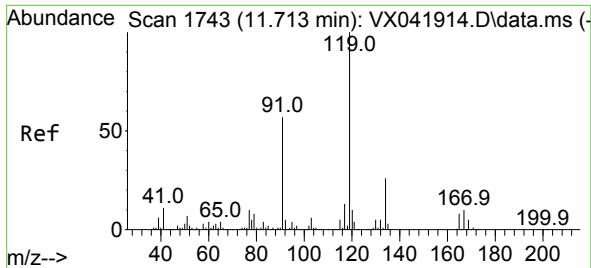
Tgt Ion: 75 Resp: 46972
 Ion Ratio Lower Upper
 75 100
 53 0.0 90.5 135.7#
 89 0.0 36.9 55.3#



#82
 4-Chlorotoluene
 Concen: 0.908 ug/l
 RT: 11.457 min Scan# 1701
 Delta R.T. 0.000 min
 Lab File: VX041917.D
 Acq: 18 Jun 2024 11:50

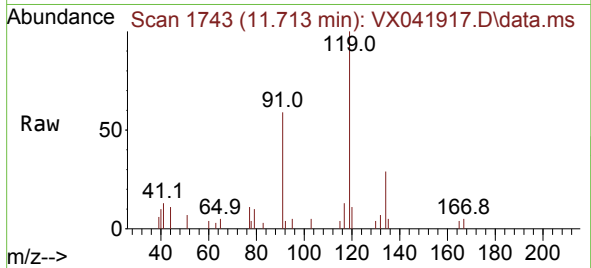
Tgt Ion: 91 Resp: 5009
 Ion Ratio Lower Upper
 91 100
 126 30.6 14.2 42.6





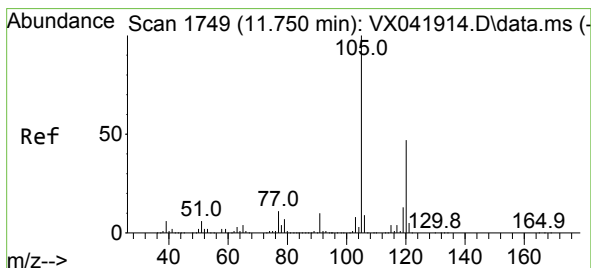
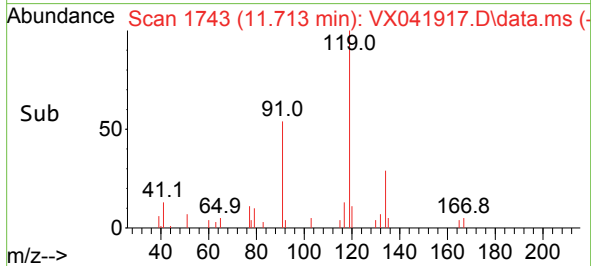
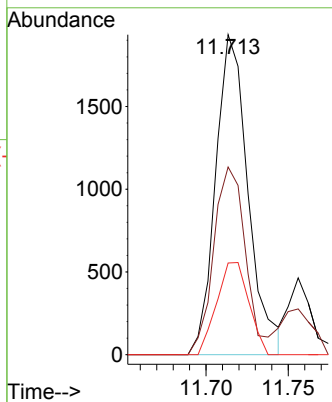
#83
 tert-Butylbenzene
 Concen: 0.408 ug/l
 RT: 11.713 min Scan# 1743
 Delta R.T. 0.000 min
 Lab File: VX041917.D
 Acq: 18 Jun 2024 11:50

Instrument : MSVOA_X
 ClientSampleId :



Tgt Ion:119 Resp: 2660

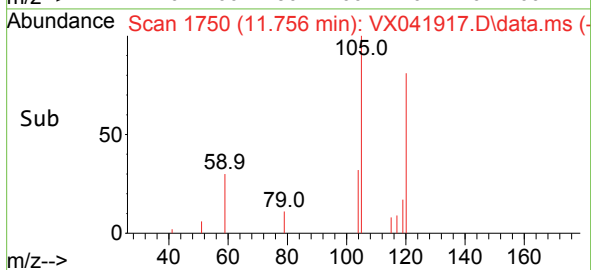
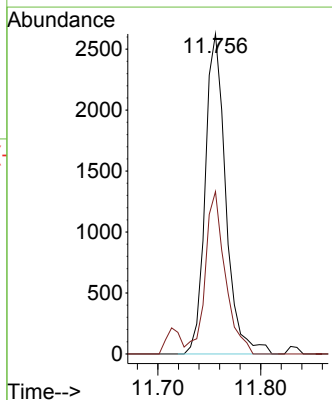
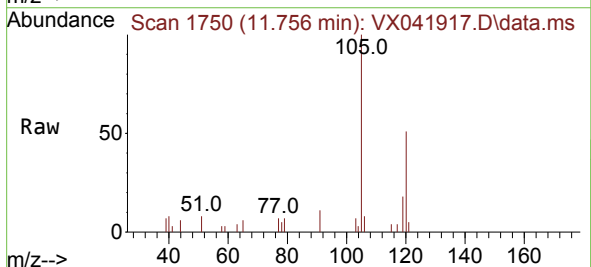
Ion	Ratio	Lower	Upper
119	100		
91	57.6	31.2	93.6
134	28.5	11.7	35.0

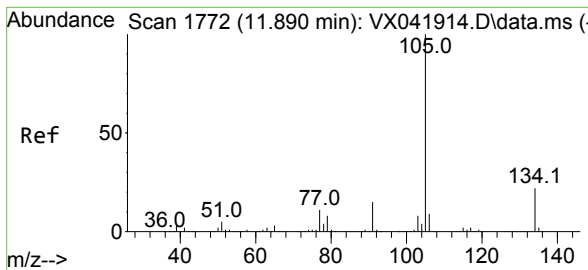


#84
 1,2,4-Trimethylbenzene
 Concen: 0.610 ug/l
 RT: 11.756 min Scan# 1750
 Delta R.T. 0.006 min
 Lab File: VX041917.D
 Acq: 18 Jun 2024 11:50

Tgt Ion:105 Resp: 3638

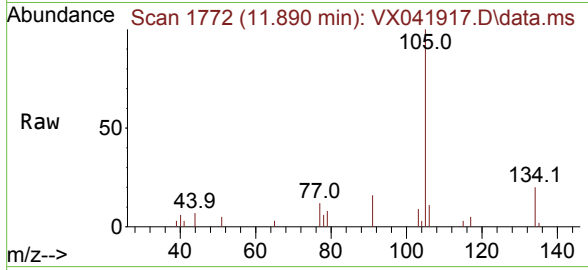
Ion	Ratio	Lower	Upper
105	100		
120	49.4	21.2	63.6



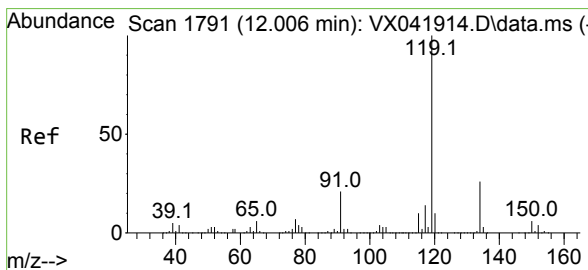
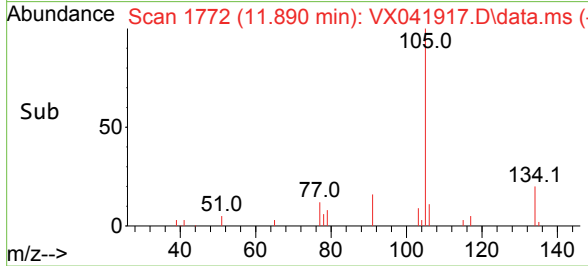
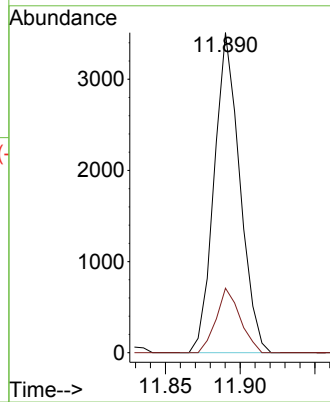


#85
 sec-Butylbenzene
 Concen: 0.566 ug/l
 RT: 11.890 min Scan# 1772
 Delta R.T. 0.000 min
 Lab File: VX041917.D
 Acq: 18 Jun 2024 11:50

Instrument : MSVOA_X
 ClientSampleId :

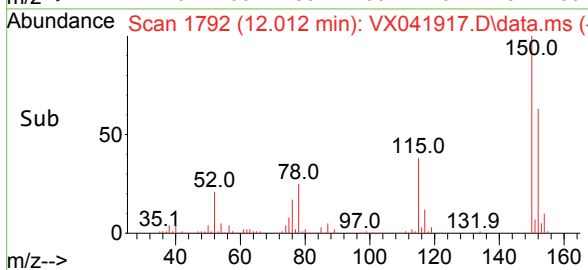
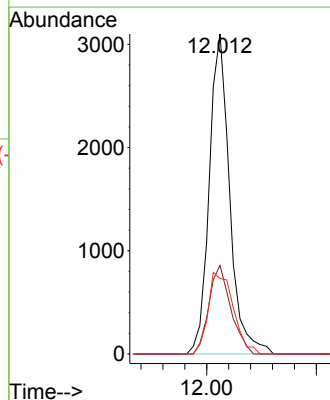
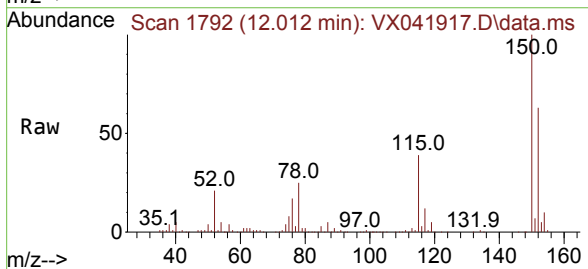


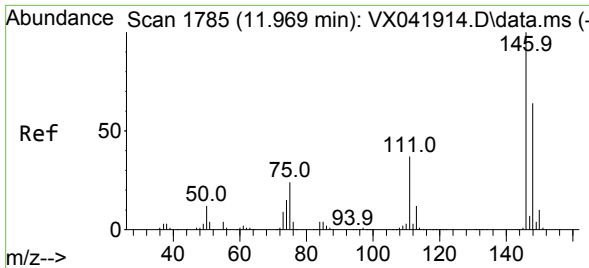
Tgt Ion:105 Resp: 4179
 Ion Ratio Lower Upper
 105 100
 134 18.9 9.8 29.4



#86
 p-Isopropyltoluene
 Concen: 0.621 ug/l
 RT: 12.012 min Scan# 1792
 Delta R.T. 0.006 min
 Lab File: VX041917.D
 Acq: 18 Jun 2024 11:50

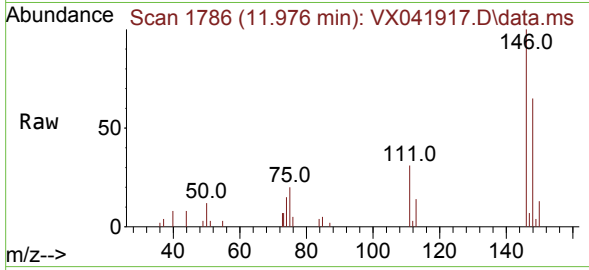
Tgt Ion:119 Resp: 4002
 Ion Ratio Lower Upper
 119 100
 134 29.6 12.8 38.3
 91 31.5 13.1 39.3



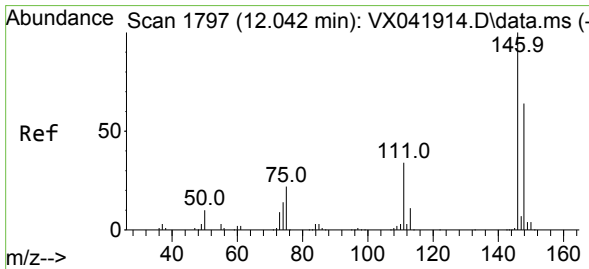
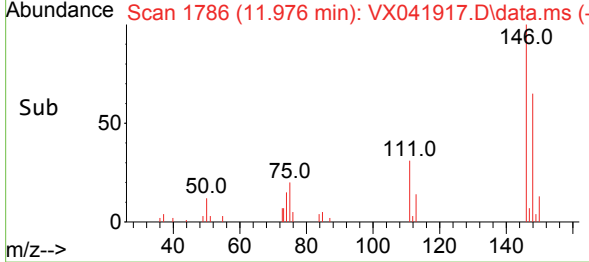
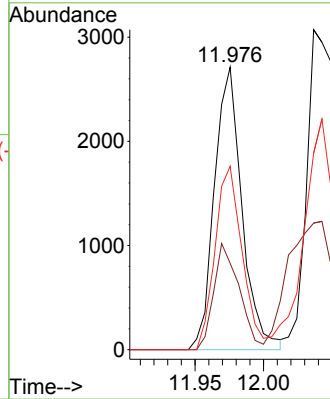


#87
 1,3-Dichlorobenzene
 Concen: 1.014 ug/l
 RT: 11.976 min Scan# 1786
 Delta R.T. 0.006 min
 Lab File: VX041917.D
 Acq: 18 Jun 2024 11:50

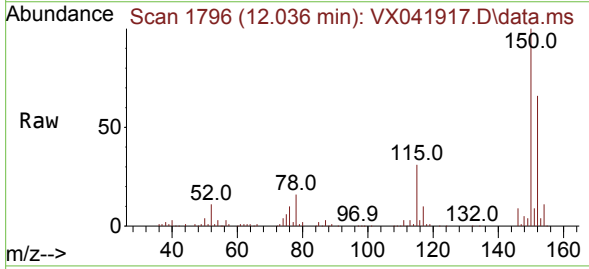
Instrument :
 MSVOA_X
 ClientSampleId :



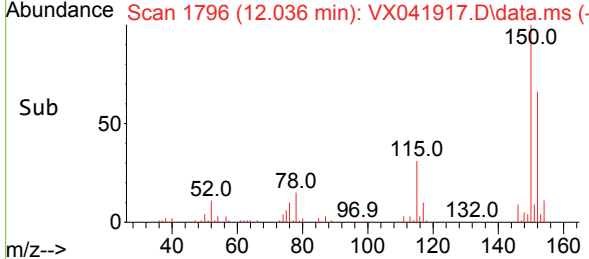
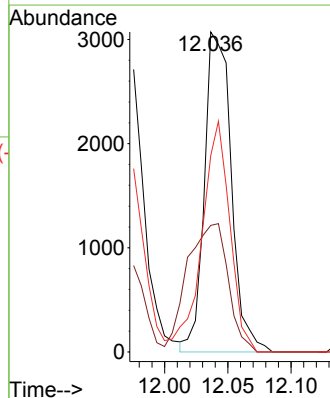
Tgt Ion:146 Resp: 3789
 Ion Ratio Lower Upper
 146 100
 111 34.9 22.1 66.1
 148 63.6 31.8 95.3

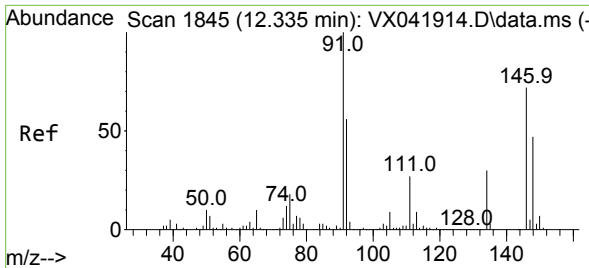


#88
 1,4-Dichlorobenzene
 Concen: 1.185 ug/l
 RT: 12.036 min Scan# 1796
 Delta R.T. -0.006 min
 Lab File: VX041917.D
 Acq: 18 Jun 2024 11:50



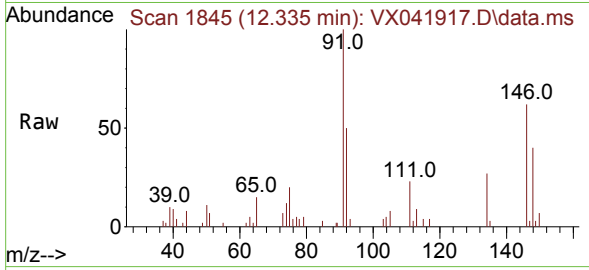
Tgt Ion:146 Resp: 4534
 Ion Ratio Lower Upper
 146 100
 111 60.8 21.3 63.7
 148 75.5 31.8 95.4





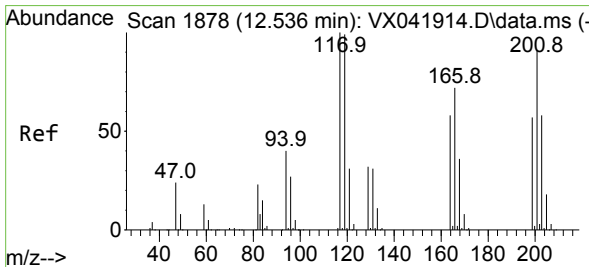
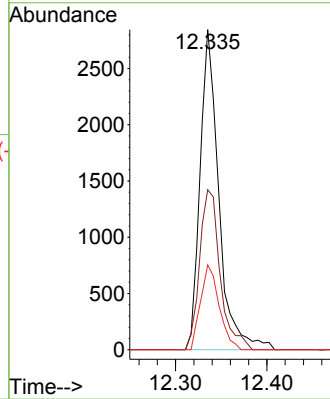
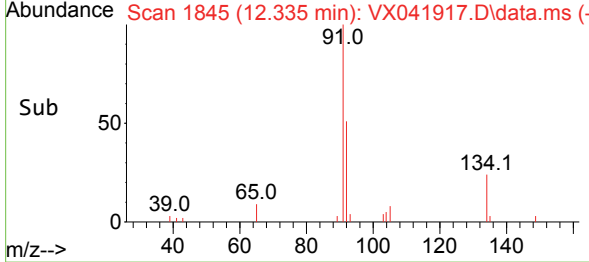
#89
 n-Butylbenzene
 Concen: 0.818 ug/l
 RT: 12.335 min Scan# 1845
 Delta R.T. 0.000 min
 Lab File: VX041917.D
 Acq: 18 Jun 2024 11:50

Instrument : MSVOA_X
 ClientSampleId :

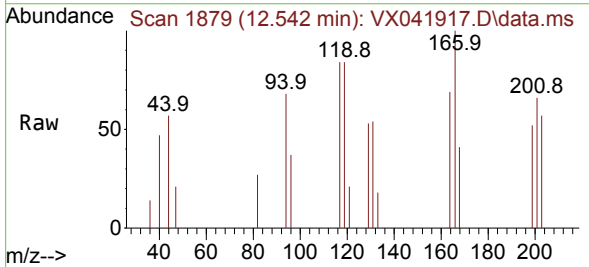


Tgt Ion: 91 Resp: 4057

Ion	Ratio	Lower	Upper
91	100		
92	54.8	27.4	82.0
134	26.3	12.6	37.8

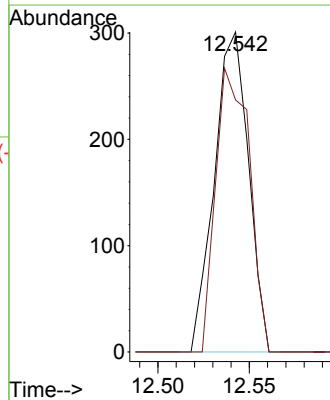
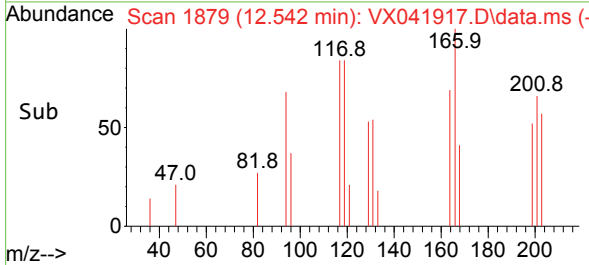


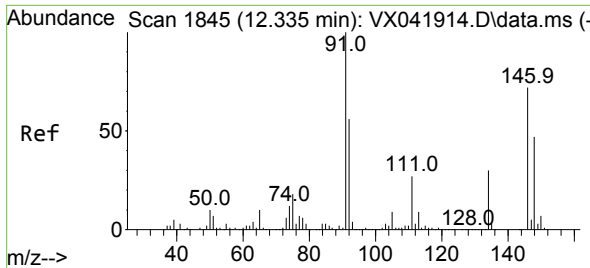
#90
 Hexachloroethane
 Concen: 0.356 ug/l
 RT: 12.542 min Scan# 1879
 Delta R.T. 0.006 min
 Lab File: VX041917.D
 Acq: 18 Jun 2024 11:50



Tgt Ion: 117 Resp: 391

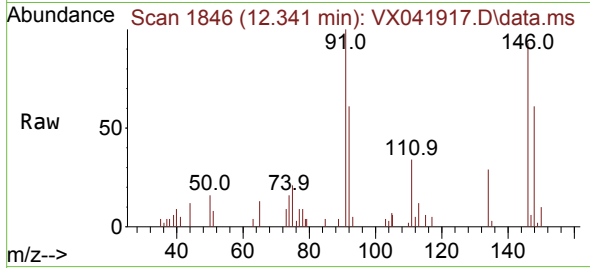
Ion	Ratio	Lower	Upper
117	100		
201	87.5	32.9	98.6



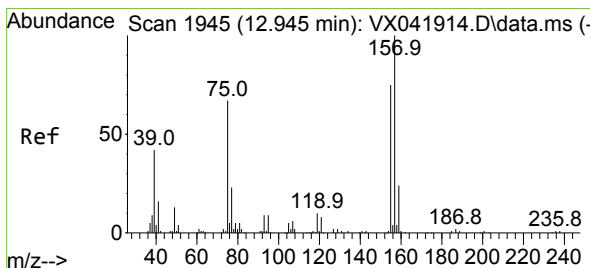
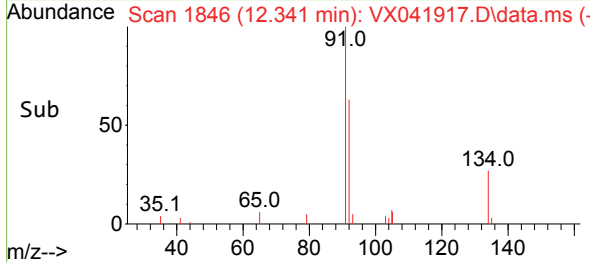
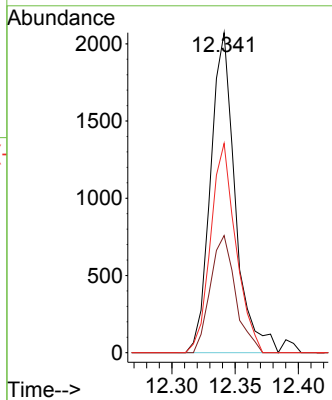


#91
 1,2-Dichlorobenzene
 Concen: 0.734 ug/l
 RT: 12.341 min Scan# 1846
 Delta R.T. 0.006 min
 Lab File: VX041917.D
 Acq: 18 Jun 2024 11:50

Instrument : MSVOA_X
 ClientSampleId :

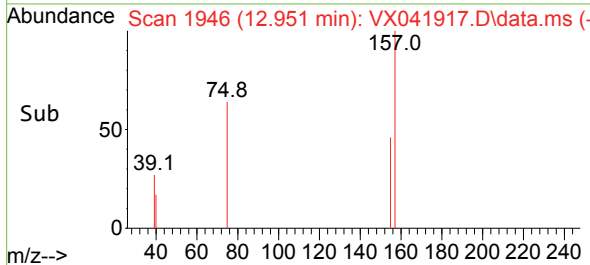
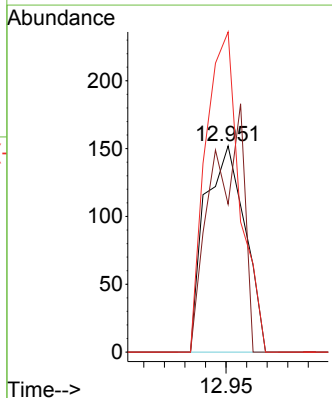
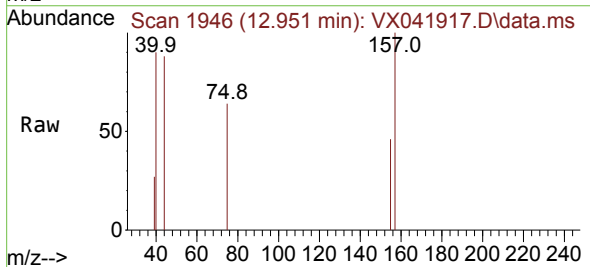


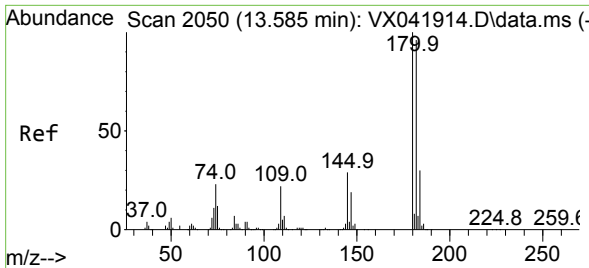
Tgt Ion	Resp	Lower	Upper
146	100		
111	37.3	22.4	67.0
148	67.0	31.6	95.0



#92
 1,2-Dibromo-3-Chloropropane
 Concen: 0.392 ug/l
 RT: 12.951 min Scan# 1946
 Delta R.T. 0.006 min
 Lab File: VX041917.D
 Acq: 18 Jun 2024 11:50

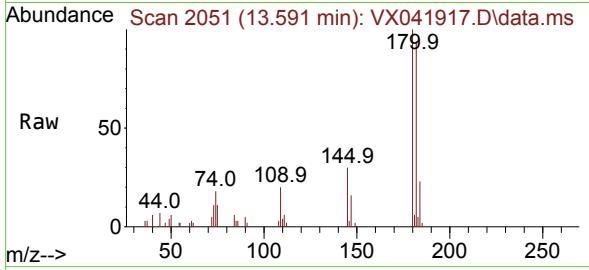
Tgt Ion	Resp	Lower	Upper
75	100		
155	93.7	36.1	108.5
157	133.0	44.9	134.7



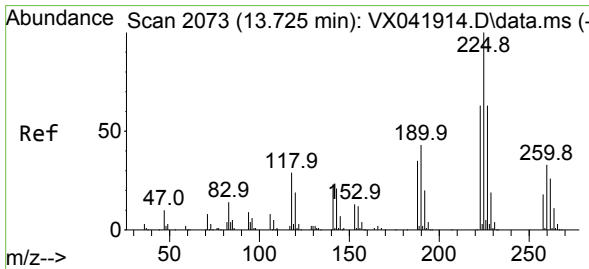
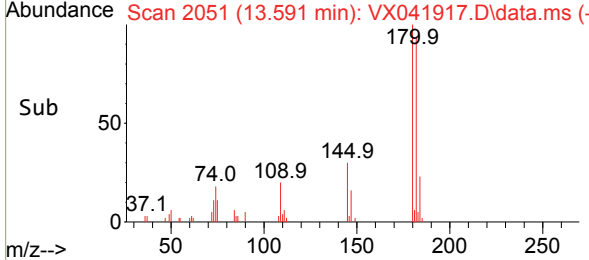
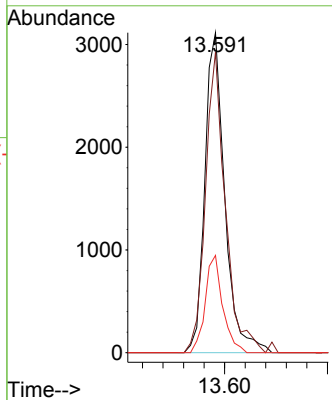


#93
 1,2,4-Trichlorobenzene
 Concen: 1.678 ug/l
 RT: 13.591 min Scan# 2051
 Delta R.T. 0.006 min
 Lab File: VX041917.D
 Acq: 18 Jun 2024 11:50

Instrument : MSVOA_X
 ClientSampleId :

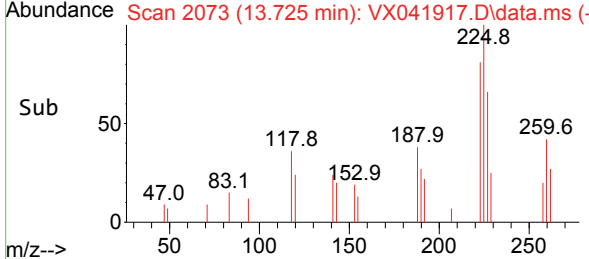
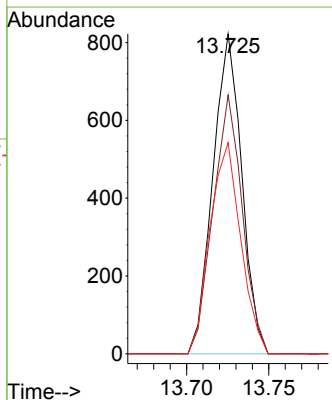
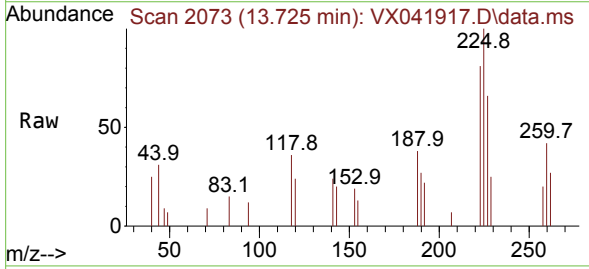


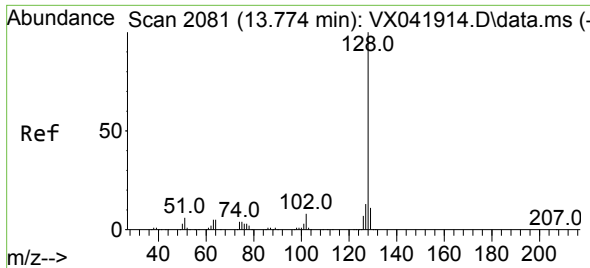
Tgt Ion:180 Resp: 4204
 Ion Ratio Lower Upper
 180 100
 182 93.5 48.3 144.8
 145 26.8 18.0 54.0



#94
 Hexachlorobutadiene
 Concen: 0.792 ug/l
 RT: 13.725 min Scan# 2073
 Delta R.T. 0.000 min
 Lab File: VX041917.D
 Acq: 18 Jun 2024 11:50

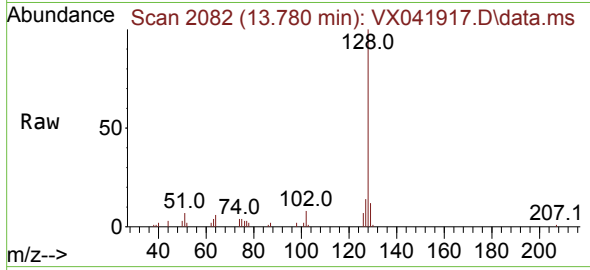
Tgt Ion:225 Resp: 1003
 Ion Ratio Lower Upper
 225 100
 223 82.2 31.1 93.2
 227 70.4 32.5 97.5



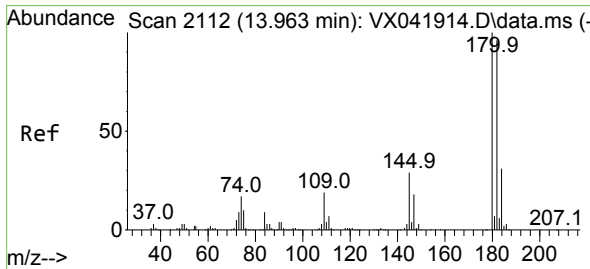
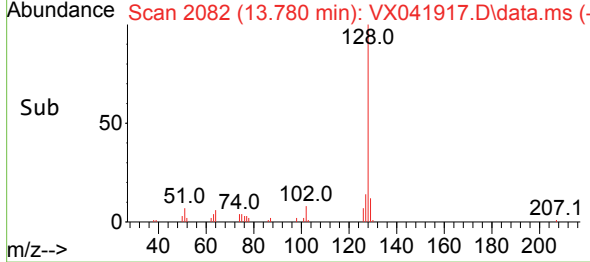
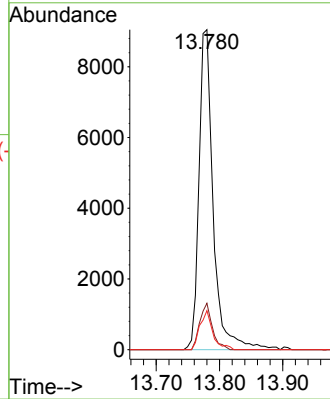


#95
 Naphthalene
 Concen: 2.406 ug/l
 RT: 13.780 min Scan# 2082
 Delta R.T. 0.006 min
 Lab File: VX041917.D
 Acq: 18 Jun 2024 11:50

Instrument : MSVOA_X
 ClientSampleId :



Tgt Ion:128 Resp: 14172
 Ion Ratio Lower Upper
 128 100
 127 12.9 10.3 15.5
 129 11.1 8.8 13.2



#96
 1,2,3-Trichlorobenzene
 Concen: 1.682 ug/l
 RT: 13.963 min Scan# 2112
 Delta R.T. 0.000 min
 Lab File: VX041917.D
 Acq: 18 Jun 2024 11:50

Tgt Ion:180 Resp: 4445
 Ion Ratio Lower Upper
 180 100
 182 97.5 46.9 140.6
 145 29.6 17.8 53.5

