

Data Path : Z:\voasrv\HPCHEM1\MSVOA\_X\Data\VX061825\  
 Data File : VX046750.D  
 Acq On : 18 Jun 2025 17:55  
 Operator : JC/MD  
 Sample : Q2344-03  
 Misc : 5.0mL/MSVOA\_X/WATER  
 ALS Vial : 24 Sample Multiplier: 1

Instrument :  
 MSVOA\_X  
 ClientSampleId :  
 MW-3

Quant Time: Jun 19 01:28:14 2025  
 Quant Method : Z:\voasrv\HPCHEM1\MSVOA\_X\Method\82X061725W.M  
 Quant Title : SW846 8260  
 QLast Update : Wed Jun 18 03:09:16 2025  
 Response via : Initial Calibration

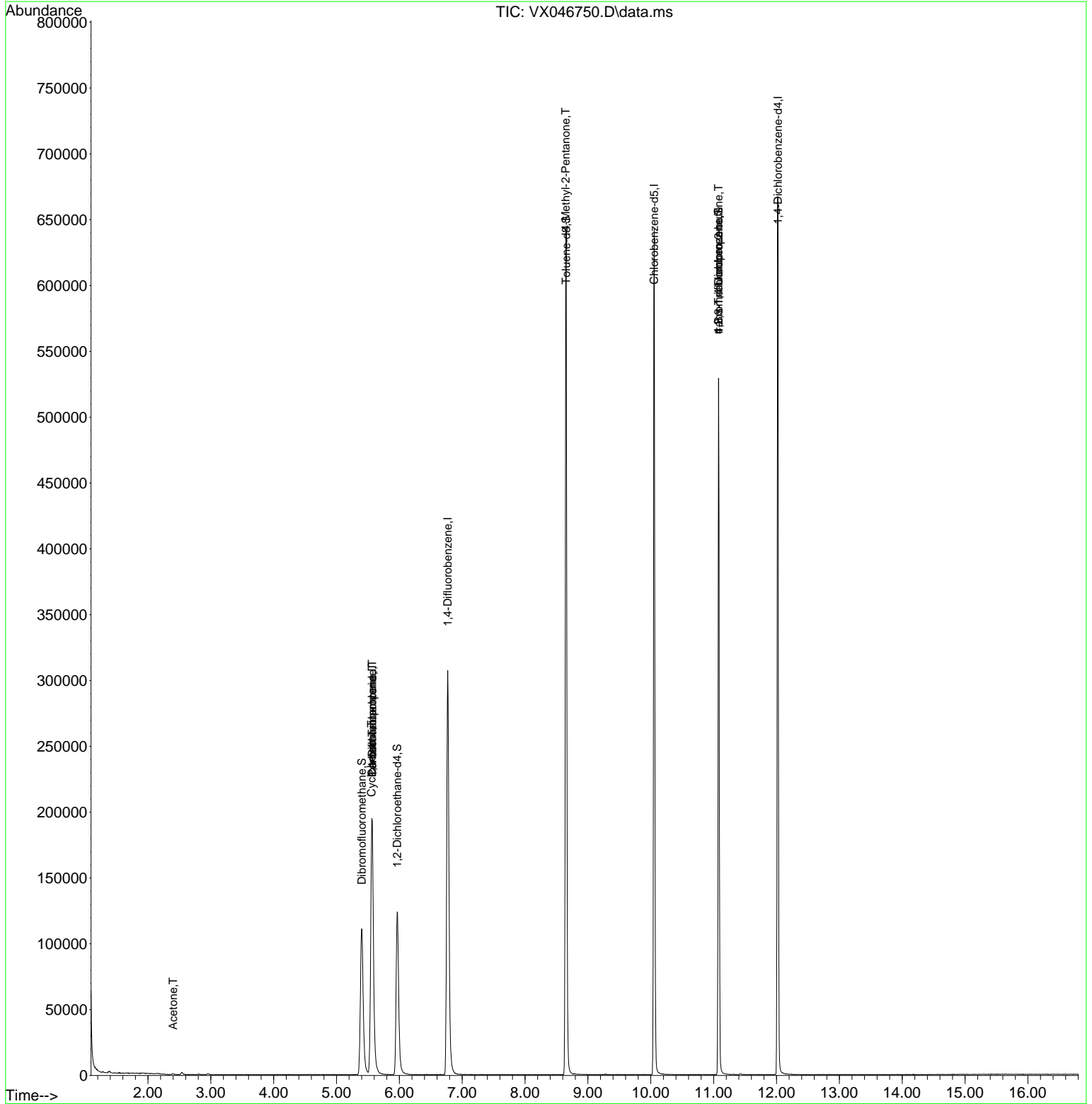
Compound	R.T.	QIon	Response	Conc	Units	Dev(Min)
-----						
Internal Standards						
1) Pentafluorobenzene	5.568	168	199636	50.000	ug/l	0.00
34) 1,4-Difluorobenzene	6.769	114	328730	50.000	ug/l	0.00
63) Chlorobenzene-d5	10.055	117	286981	50.000	ug/l	0.00
72) 1,4-Dichlorobenzene-d4	12.024	152	138013	50.000	ug/l	0.00
System Monitoring Compounds						
33) 1,2-Dichloroethane-d4	5.964	65	130020	47.086	ug/l	0.00
Spiked Amount	50.000	Range	74 - 125	Recovery	=	94.180%
35) Dibromofluoromethane	5.403	113	107701	49.518	ug/l	0.00
Spiked Amount	50.000	Range	75 - 124	Recovery	=	99.040%
50) Toluene-d8	8.653	98	388722	49.746	ug/l	0.00
Spiked Amount	50.000	Range	86 - 113	Recovery	=	99.500%
62) 4-Bromofluorobenzene	11.079	95	140080	48.090	ug/l	0.00
Spiked Amount	50.000	Range	77 - 121	Recovery	=	96.180%
Target Compounds						
						Qvalue
16) Acetone	2.398	43	843	0.915	ug/l	98
31) Cyclohexane	5.556	56	4359	1.054	ug/l #	1
36) 1,1-Dichloropropene	5.568	75	15764	5.021	ug/l #	51
38) Carbon Tetrachloride	5.568	117	20903	6.135	ug/l #	17
51) 4-Methyl-2-Pentanone	8.646	43	1666	0.616	ug/l #	1
76) 1,2,3-Trichloropropane	11.079	75	71923	28.453	ug/l #	40
81) trans-1,4-Dichloro-2-b...	11.079	75	71923	80.426	ug/l #	7

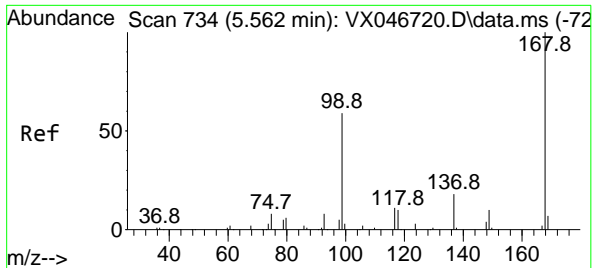
(#) = qualifier out of range (m) = manual integration (+) = signals summed

Data Path : Z:\voasrv\HPCHEM1\MSVOA\_X\Data\VX061825\  
 Data File : VX046750.D  
 Acq On : 18 Jun 2025 17:55  
 Operator : JC/MD  
 Sample : Q2344-03  
 Misc : 5.0mL/MSVOA\_X/WATER  
 ALS Vial : 24 Sample Multiplier: 1

**Instrument :**  
 MSVOA\_X  
**ClientSampleId :**  
 MW-3

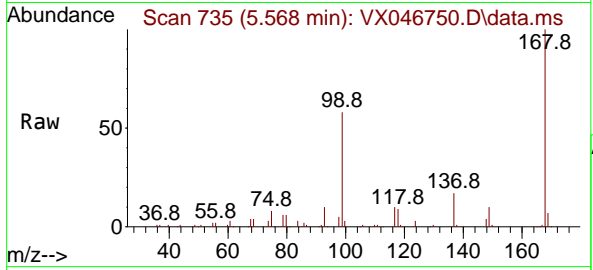
Quant Time: Jun 19 01:28:14 2025  
 Quant Method : Z:\voasrv\HPCHEM1\MSVOA\_X\Method\82X061725W.M  
 Quant Title : SW846 8260  
 QLast Update : Wed Jun 18 03:09:16 2025  
 Response via : Initial Calibration



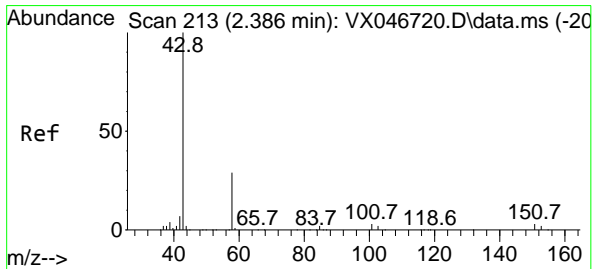
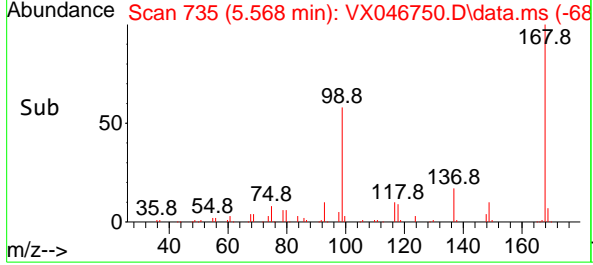
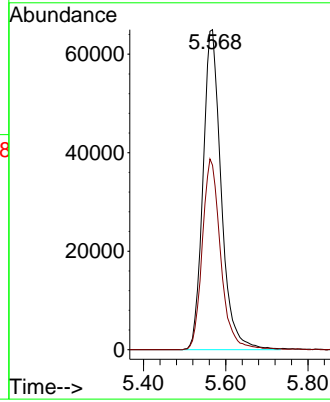


#1  
 Pentafluorobenzene  
 Concen: 50.000 ug/l  
 RT: 5.568 min Scan# 71  
 Delta R.T. 0.006 min  
 Lab File: VX046750.D  
 Acq: 18 Jun 2025 17:55

Instrument :  
 MSVOA\_X  
 ClientSampleId :  
 MW-3

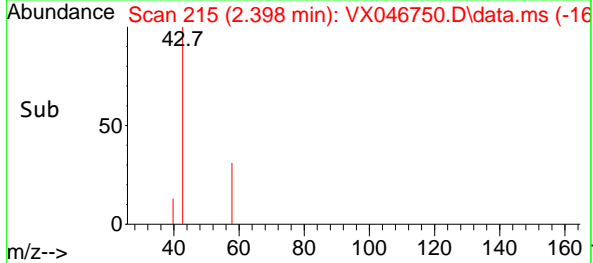
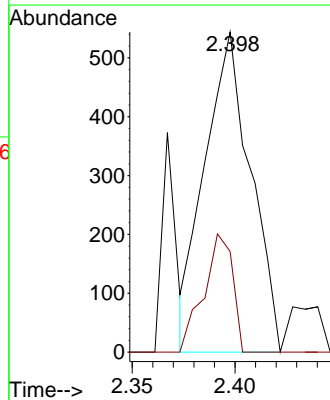
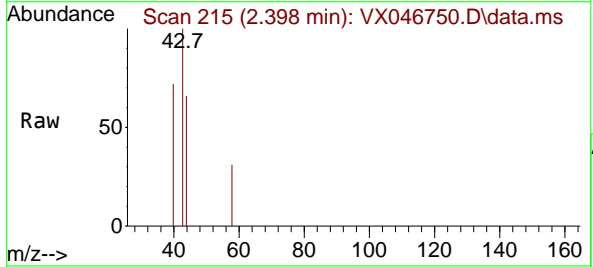


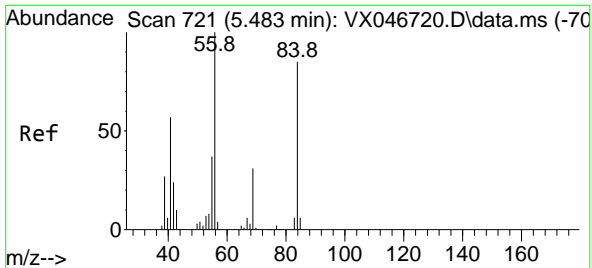
Tgt Ion:168 Resp: 199636  
 Ion Ratio Lower Upper  
 168 100  
 99 57.7 48.5 72.7



#16  
 Acetone  
 Concen: 0.915 ug/l  
 RT: 2.398 min Scan# 215  
 Delta R.T. 0.012 min  
 Lab File: VX046750.D  
 Acq: 18 Jun 2025 17:55

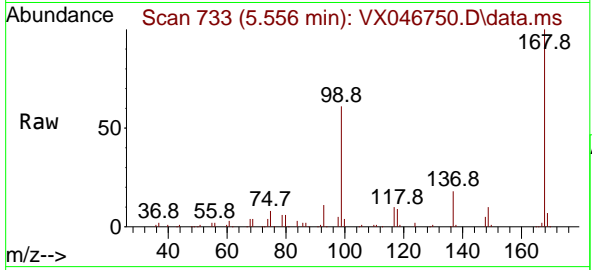
Tgt Ion: 43 Resp: 843  
 Ion Ratio Lower Upper  
 43 100  
 58 31.4 24.5 36.7



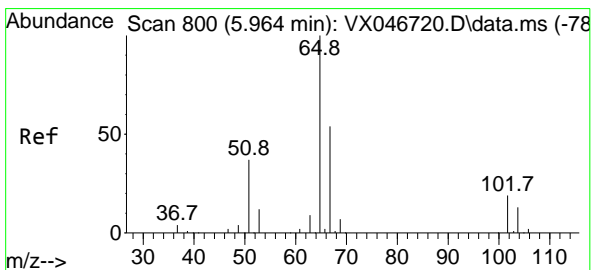
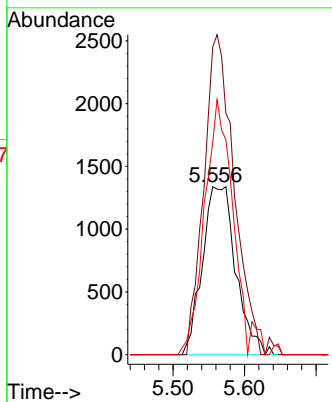
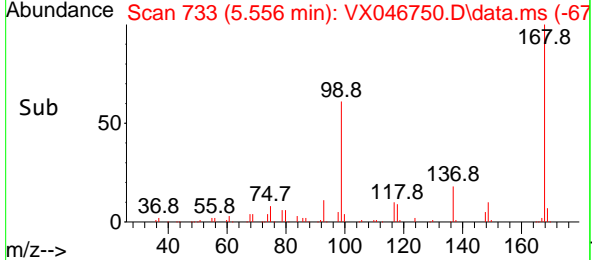


#31  
 Cyclohexane  
 Concen: 1.054 ug/l  
 RT: 5.556 min Scan# 711  
 Delta R.T. 0.073 min  
 Lab File: VX046750.D  
 Acq: 18 Jun 2025 17:55

Instrument : MSVOA\_X  
 ClientSampleId : MW-3

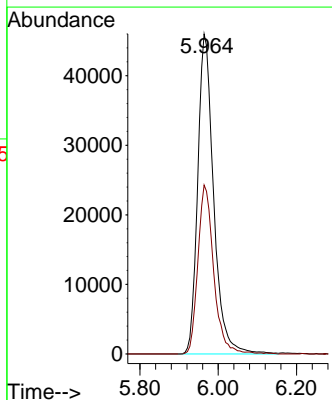
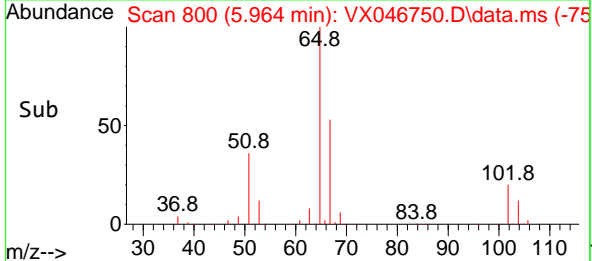
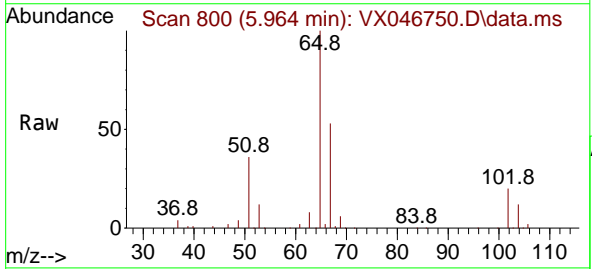


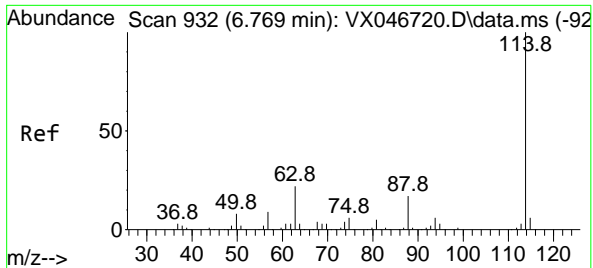
Tgt Ion: 56 Resp: 4359  
 Ion Ratio Lower Upper  
 56 100  
 69 183.2 24.8 37.2#  
 84 126.5 68.2 102.2#



#33  
 1,2-Dichloroethane-d4  
 Concen: 47.086 ug/l  
 RT: 5.964 min Scan# 800  
 Delta R.T. -0.000 min  
 Lab File: VX046750.D  
 Acq: 18 Jun 2025 17:55

Tgt Ion: 65 Resp: 130020  
 Ion Ratio Lower Upper  
 65 100  
 67 52.5 0.0 105.4



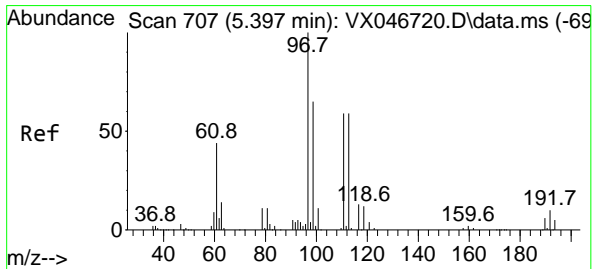
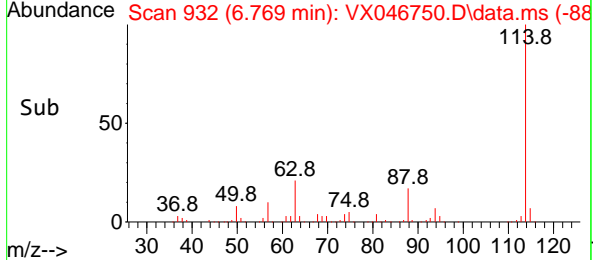
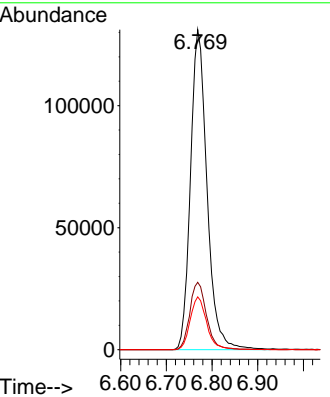
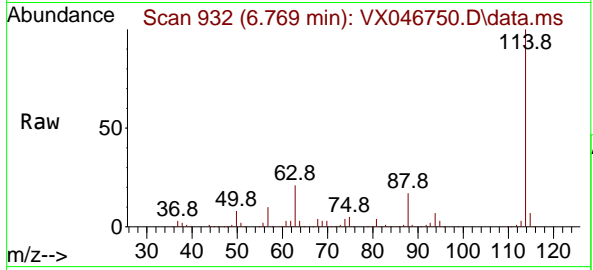


#34  
 1,4-Difluorobenzene  
 Concen: 50.000 ug/l  
 RT: 6.769 min Scan# 91  
 Delta R.T. -0.000 min  
 Lab File: VX046750.D  
 Acq: 18 Jun 2025 17:55

Instrument :  
 MSVOA\_X  
 ClientSampleId :  
 MW-3

Tgt Ion:114 Resp: 328730

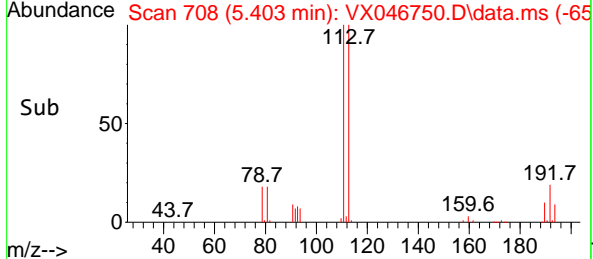
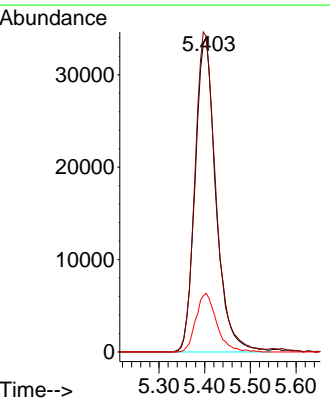
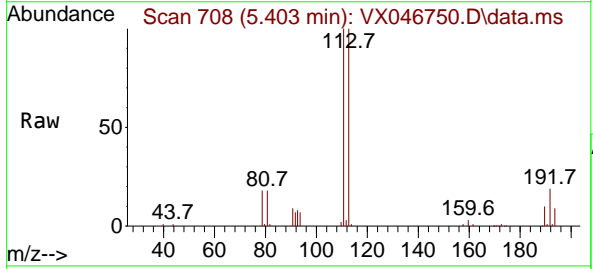
Ion	Ratio	Lower	Upper
114	100		
63	21.1	0.0	44.2
88	16.5	0.0	33.2

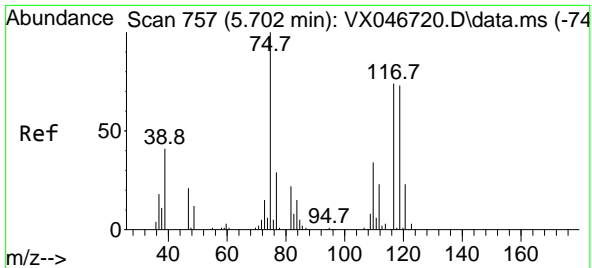


#35  
 Dibromofluoromethane  
 Concen: 49.518 ug/l  
 RT: 5.403 min Scan# 708  
 Delta R.T. 0.006 min  
 Lab File: VX046750.D  
 Acq: 18 Jun 2025 17:55

Tgt Ion:113 Resp: 107701

Ion	Ratio	Lower	Upper
113	100		
111	102.1	82.0	123.0
192	18.6	15.3	22.9

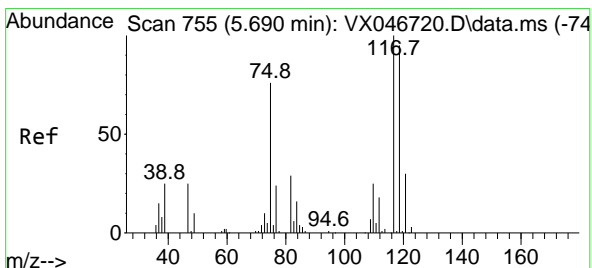
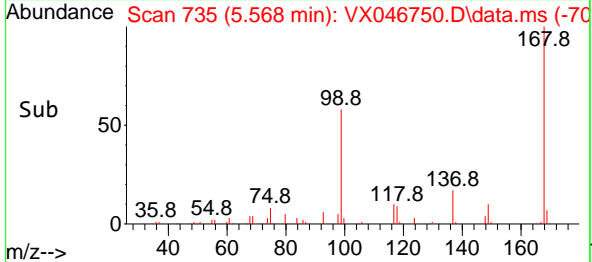
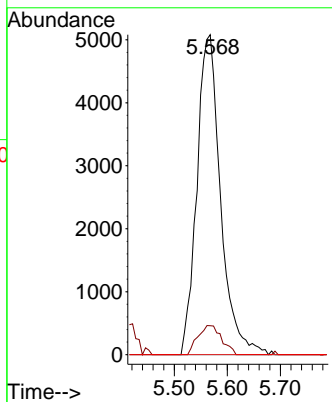
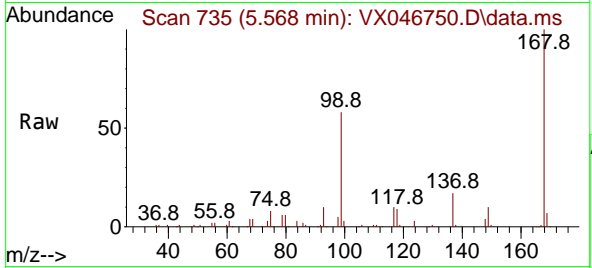




#36  
 1,1-Dichloropropene  
 Concen: 5.021 ug/l  
 RT: 5.568 min Scan# 735  
 Delta R.T. -0.135 min  
 Lab File: VX046750.D  
 Acq: 18 Jun 2025 17:55

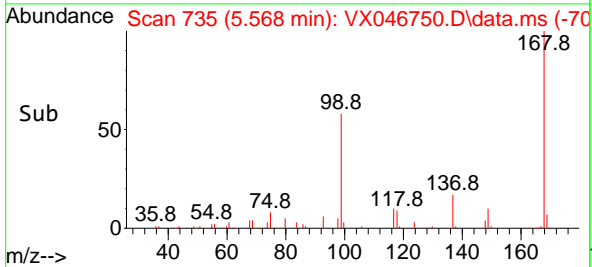
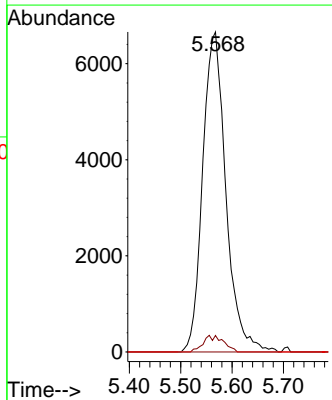
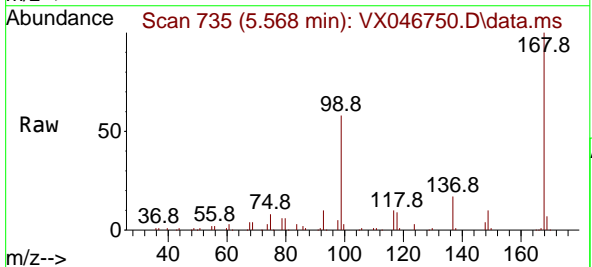
Instrument : MSVOA\_X  
 ClientSampleId : MW-3

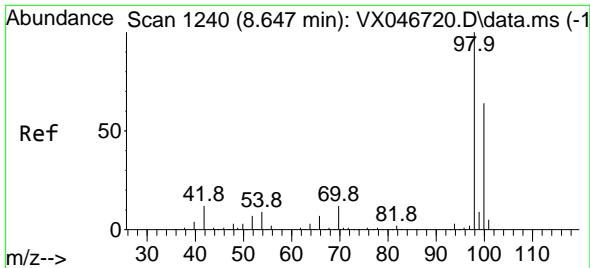
Tgt Ion	Resp	Lower	Upper
75	15764		
75	100		
110	9.1	17.2	51.5#
77	0.0	24.2	36.4#



#38  
 Carbon Tetrachloride  
 Concen: 6.135 ug/l  
 RT: 5.568 min Scan# 735  
 Delta R.T. -0.122 min  
 Lab File: VX046750.D  
 Acq: 18 Jun 2025 17:55

Tgt Ion	Resp	Lower	Upper
117	20903		
117	100		
119	5.1	75.2	112.8#
121	0.0	24.1	36.1#

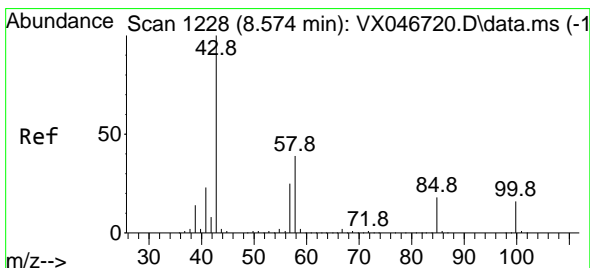
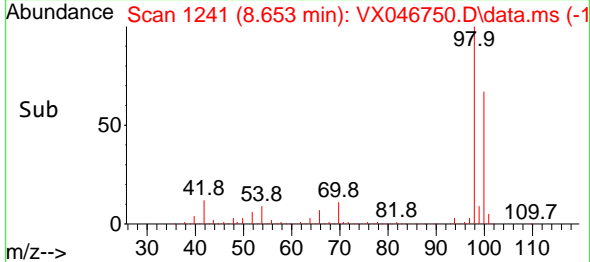
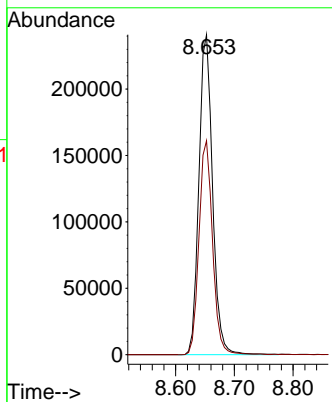
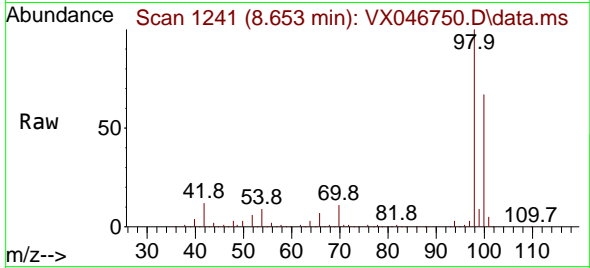




#50  
 Toluene-d8  
 Concen: 49.746 ug/l  
 RT: 8.653 min Scan# 1241  
 Delta R.T. 0.006 min  
 Lab File: VX046750.D  
 Acq: 18 Jun 2025 17:55

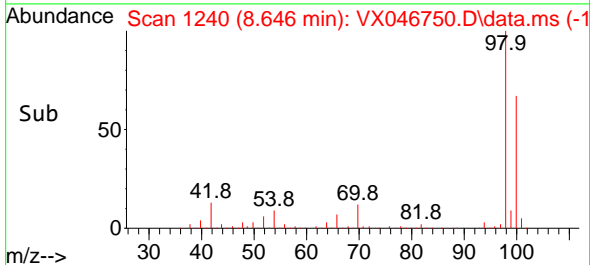
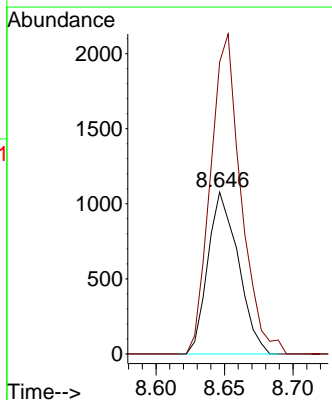
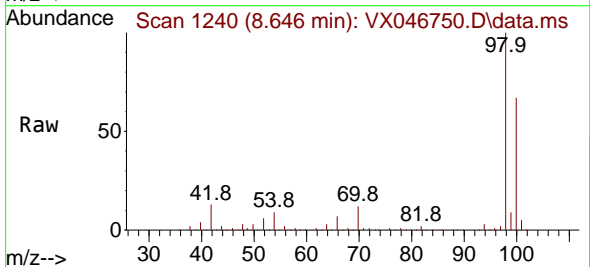
Instrument :  
 MSVOA\_X  
 ClientSampleId :  
 MW-3

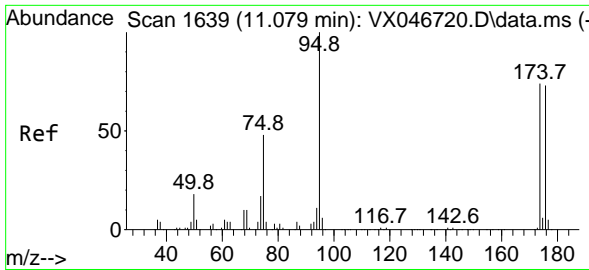
Tgt Ion: 98 Resp: 388722  
 Ion Ratio Lower Upper  
 98 100  
 100 66.6 53.0 79.4



#51  
 4-Methyl-2-Pentanone  
 Concen: 0.616 ug/l  
 RT: 8.646 min Scan# 1240  
 Delta R.T. 0.073 min  
 Lab File: VX046750.D  
 Acq: 18 Jun 2025 17:55

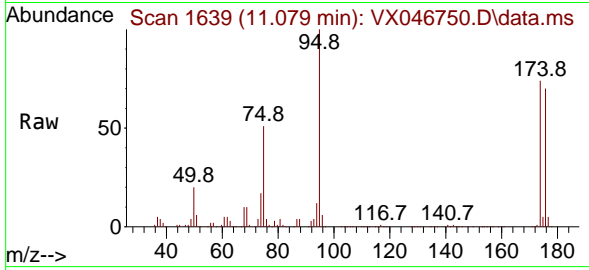
Tgt Ion: 43 Resp: 1666  
 Ion Ratio Lower Upper  
 43 100  
 58 198.0 30.8 46.2#



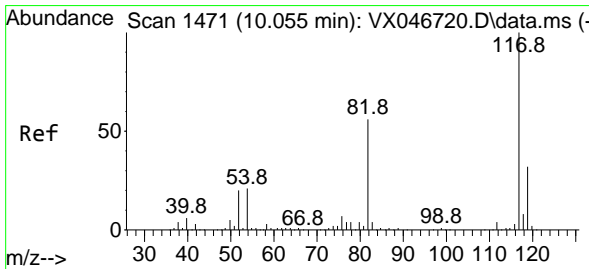
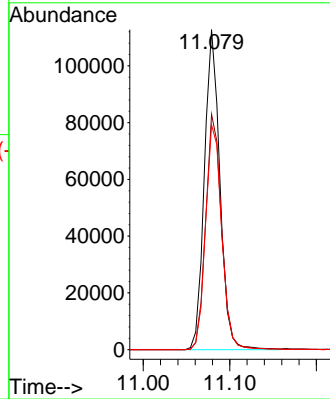
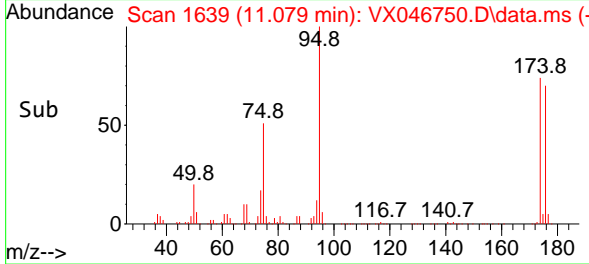


#62  
 4-Bromofluorobenzene  
 Concen: 48.090 ug/l  
 RT: 11.079 min Scan# 1639  
 Delta R.T. -0.000 min  
 Lab File: VX046750.D  
 Acq: 18 Jun 2025 17:55

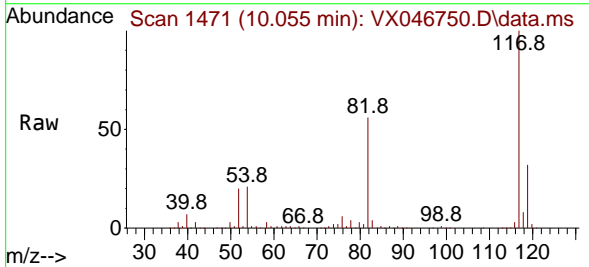
Instrument : MSVOA\_X  
 ClientSampleId : MW-3



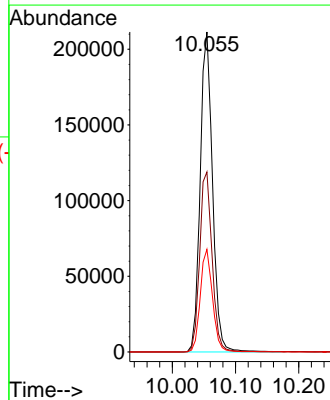
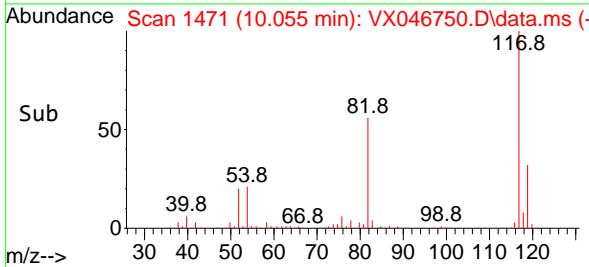
Tgt Ion: 95 Resp: 140080  
 Ion Ratio Lower Upper  
 95 100  
 174 75.7 0.0 150.4  
 176 73.3 0.0 145.0



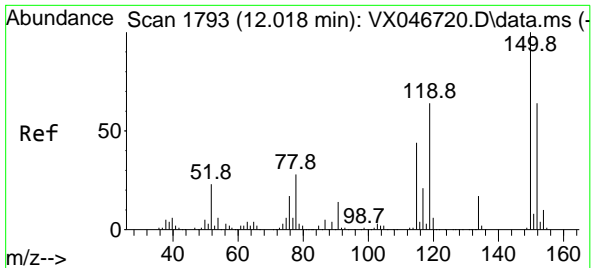
#63  
 Chlorobenzene-d5  
 Concen: 50.000 ug/l  
 RT: 10.055 min Scan# 1471  
 Delta R.T. -0.000 min  
 Lab File: VX046750.D  
 Acq: 18 Jun 2025 17:55



Tgt Ion: 117 Resp: 286981  
 Ion Ratio Lower Upper  
 117 100  
 82 56.3 44.6 66.8  
 119 32.0 25.8 38.8

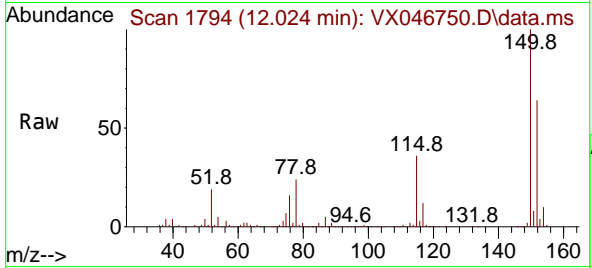




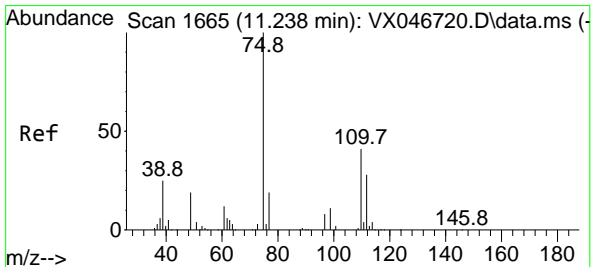
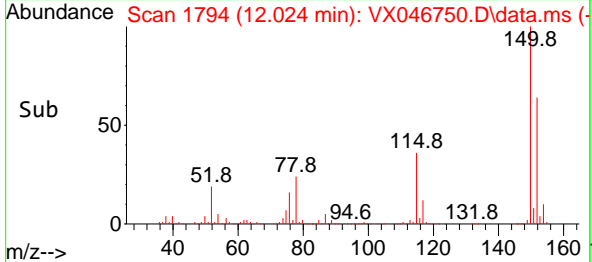
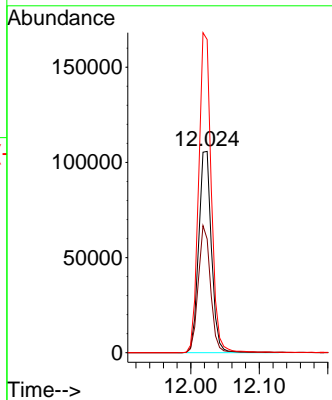


#72  
 1,4-Dichlorobenzene-d4  
 Concen: 50.000 ug/l  
 RT: 12.024 min Scan# 1  
 Delta R.T. 0.006 min  
 Lab File: VX046750.D  
 Acq: 18 Jun 2025 17:55

Instrument :  
 MSVOA\_X  
 ClientSampleId :  
 MW-3

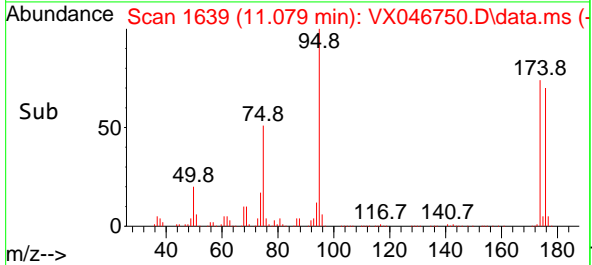
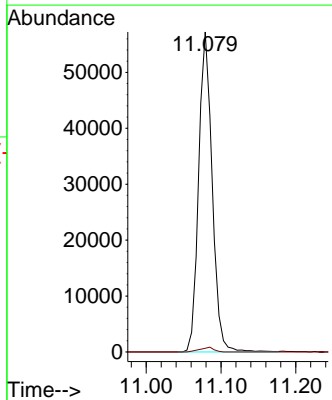
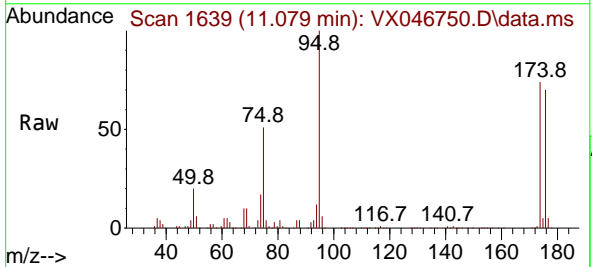


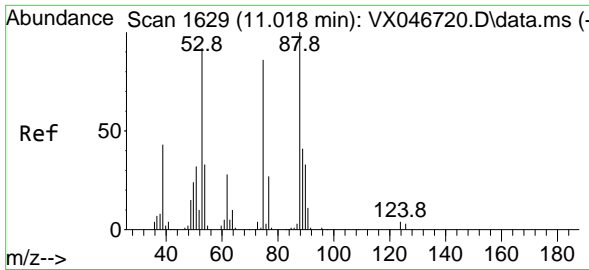
Tgt Ion:152 Resp: 138013  
 Ion Ratio Lower Upper  
 152 100  
 115 60.5 43.2 129.6  
 150 157.2 0.0 346.8



#76  
 1,2,3-Trichloropropane  
 Concen: 28.453 ug/l  
 RT: 11.079 min Scan# 1639  
 Delta R.T. -0.159 min  
 Lab File: VX046750.D  
 Acq: 18 Jun 2025 17:55

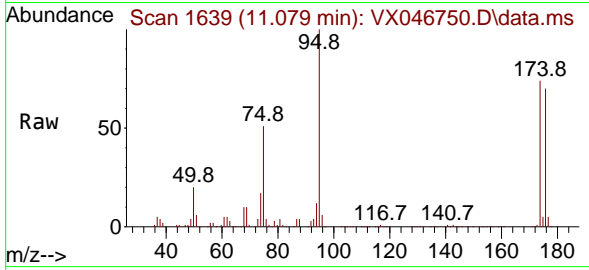
Tgt Ion: 75 Resp: 71923  
 Ion Ratio Lower Upper  
 75 100  
 77 1.5 18.5 55.5#





#81  
 trans-1,4-Dichloro-2-butene  
 Concen: 80.426 ug/l  
 RT: 11.079 min Scan# 1  
 Delta R.T. 0.061 min  
 Lab File: VX046750.D  
 Acq: 18 Jun 2025 17:55

Instrument :  
 MSVOA\_X  
 ClientSampleId :  
 MW-3



Tgt Ion: 75 Resp: 71923

Ion	Ratio	Lower	Upper
75	100		
53	0.0	86.8	130.2#
89	0.0	36.9	55.3#

