

Data Path : Z:\voasrv\HPCHEM1\MSVOA\_X\Data\VX061825\  
 Data File : VX046741.D  
 Acq On : 18 Jun 2025 14:41  
 Operator : JC/MD  
 Sample : Q2345-11  
 Misc : 5.0mL/MSVOA\_X/WATER  
 ALS Vial : 15 Sample Multiplier: 1

Instrument :  
 MSVOA\_X  
 ClientSampleId :  
 BPOW6-10-20250616

Integration Parameters: RTEINT.P

Integrator: RTE  
 Smoothing : ON                   Filtering: 5  
 Sampling : 1                    Min Area: 3 % of largest Peak  
 Start Thrs: 0.2                Max Peaks: 100  
 Stop Thrs : 0                 Peak Location: TOP

If leading or trailing edge < 100 prefer < Baseline drop else tangent >  
 Peak separation: 5

Method : Z:\voasrv\HPCHEM1\MSVOA\_X\Method\82X061725W.M  
 Title : SW846 8260

Signal : TIC: VX046741.D\data.ms

peak #	R.T. min	first scan	max scan	last scan	PK TY	peak height	corr. area	corr. % max.	% of total
1	5.403	696	708	725	rBV	120333	382198	33.69%	6.324%
2	5.562	725	734	757	rVB	214966	664591	58.59%	10.996%
3	5.964	791	800	822	rBV	133923	383938	33.85%	6.352%
4	6.769	923	932	953	rBV	335953	844608	74.46%	13.974%
5	8.653	1234	1241	1258	rBV	705180	1134293	100.00%	18.767%
6	10.055	1465	1471	1484	rBV	714593	969073	85.43%	16.034%
7	11.079	1634	1639	1653	rBV	579005	739502	65.19%	12.235%
8	12.018	1788	1793	1810	rBV	746371	925840	81.62%	15.318%

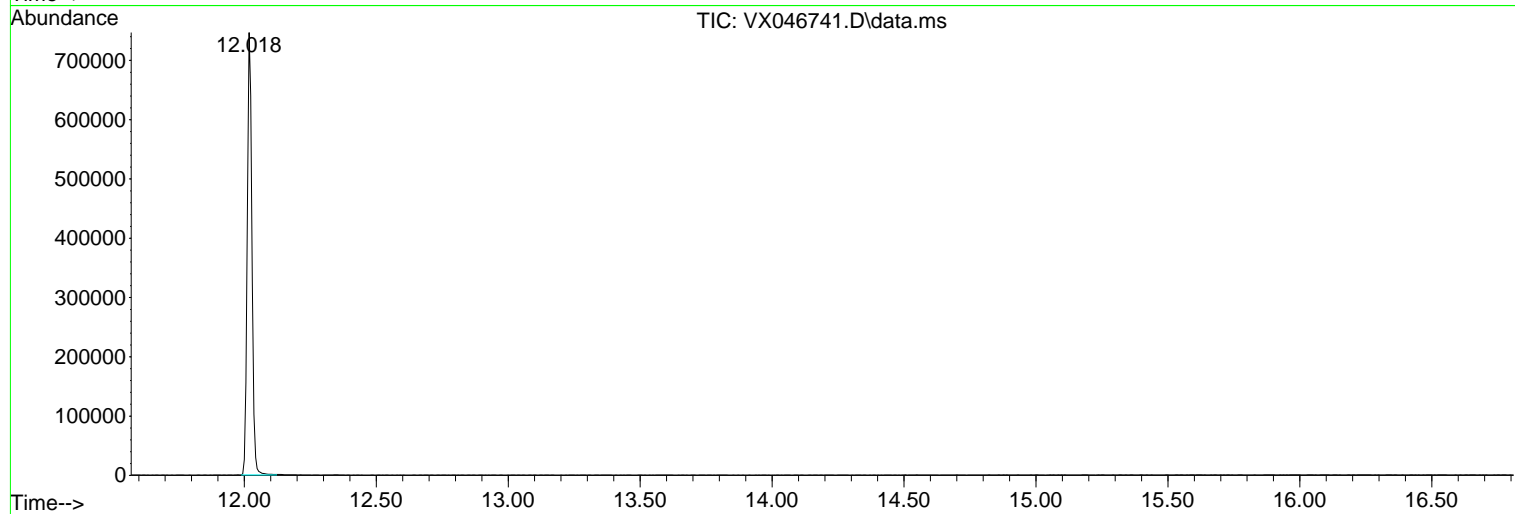
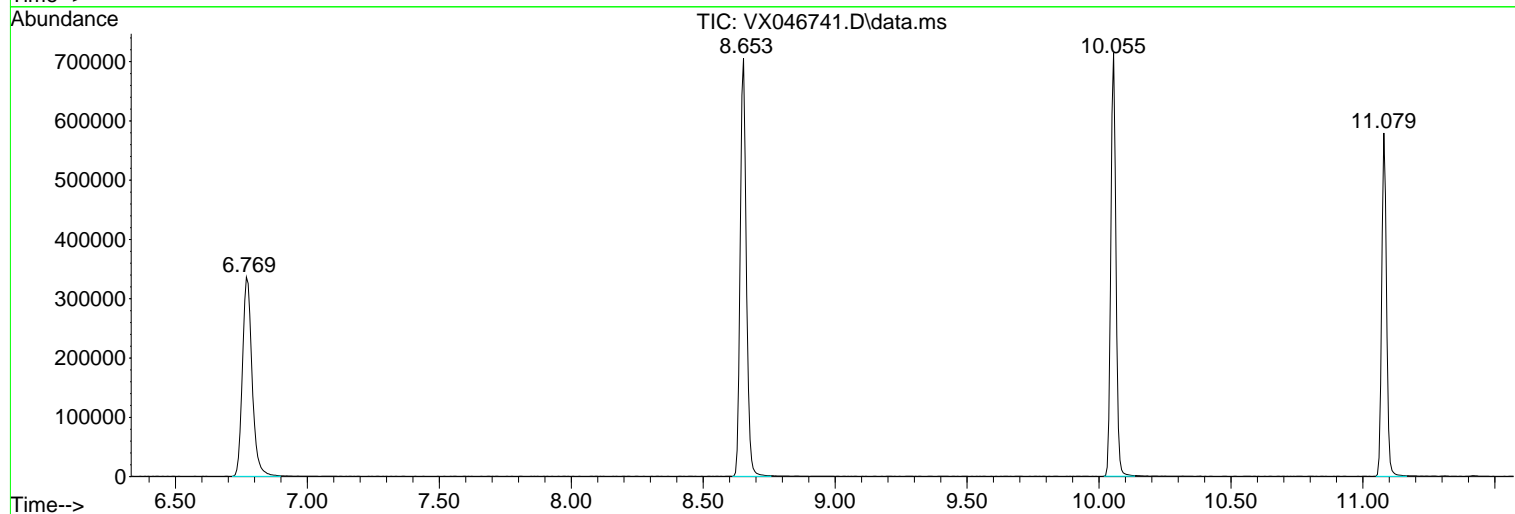
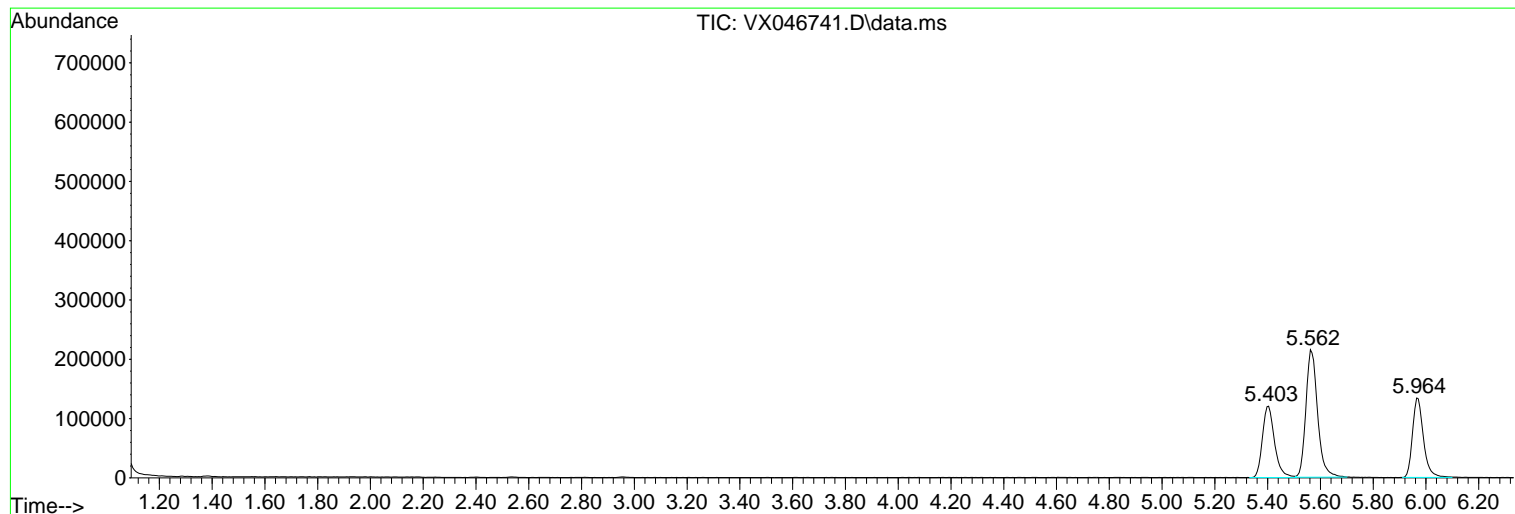
Sum of corrected areas: 6044043

Data Path : Z:\voasrv\HPCHEM1\MSVOA\_X\Data\VX061825\  
 Data File : VX046741.D  
 Acq On : 18 Jun 2025 14:41  
 Operator : JC/MD  
 Sample : Q2345-11  
 Misc : 5.0mL/MSVOA\_X/WATER  
 ALS Vial : 15 Sample Multiplier: 1

Instrument :  
 MSVOA\_X  
 ClientSampleId :  
 BPOW6-10-20250616

Quant Method : Z:\voasrv\HPCHEM1\MSVOA\_X\Method\82X061725W.M  
 Quant Title : SW846 8260

TIC Library : C:\Database\NIST20.L  
 TIC Integration Parameters: LSCINT.P



Library Search Compound Report

Data Path : Z:\voasrv\HPCHEM1\MSVOA\_X\Data\VX061825\  
Data File : VX046741.D  
Acq On : 18 Jun 2025 14:41  
Operator : JC/MD  
Sample : Q2345-11  
Misc : 5.0mL/MSVOA\_X/WATER  
ALS Vial : 15 Sample Multiplier: 1

Instrument :  
MSVOA\_X  
ClientSampleId :  
BPOW6-10-20250616

Quant Method : Z:\voasrv\HPCHEM1\MSVOA\_X\Method\82X061725W.M  
Quant Title : SW846 8260

TIC Library : C:\Database\NIST20.L  
TIC Integration Parameters: LSCINT.P

No Library Search Compounds Detected

\*\*\*\*\*

Data Path : Z:\voasrv\HPCHEM1\MSVOA\_X\Data\VX061825\  
Data File : VX046741.D  
Acq On : 18 Jun 2025 14:41  
Operator : JC/MD  
Sample : Q2345-11  
Misc : 5.0mL/MSVOA\_X/WATER  
ALS Vial : 15 Sample Multiplier: 1

Instrument :  
MSVOA\_X  
ClientSampleId :  
BPOW6-10-20250616

Quant Method : Z:\voasrv\HPCHEM1\MSVOA\_X\Method\82X061725W.M  
Quant Title : SW846 8260

TIC Library : C:\Database\NIST20.L  
TIC Integration Parameters: LSCINT.P

TIC Top Hit name	RT	EstConc	Units	Response	--Internal Standard--		
					#	RT	Resp Conc

---