

Data Path : Z:\voasrv\HPCHEM1\MSVOA_X\Data\VX061923\
 Data File : VX036221.D
 Acq On : 19 Jun 2023 21:10
 Operator : JC/MD
 Sample : PB153531ZHE#09
 Misc : 5.0mL/MSVOA_X/WATER
 ALS Vial : 24 Sample Multiplier: 1

Instrument :
 MSVOA_X
 ClientSampleId :
 PB153531ZHE#09

Quant Time: Jun 20 03:49:39 2023
 Quant Method : Z:\voasrv\HPCHEM1\MSVOA_X\Method\82X061623W.M
 Quant Title : SW846 8260
 QLast Update : Fri Jun 16 16:28:40 2023
 Response via : Initial Calibration

Compound	R.T.	QIon	Response	Conc	Units	Dev(Min)

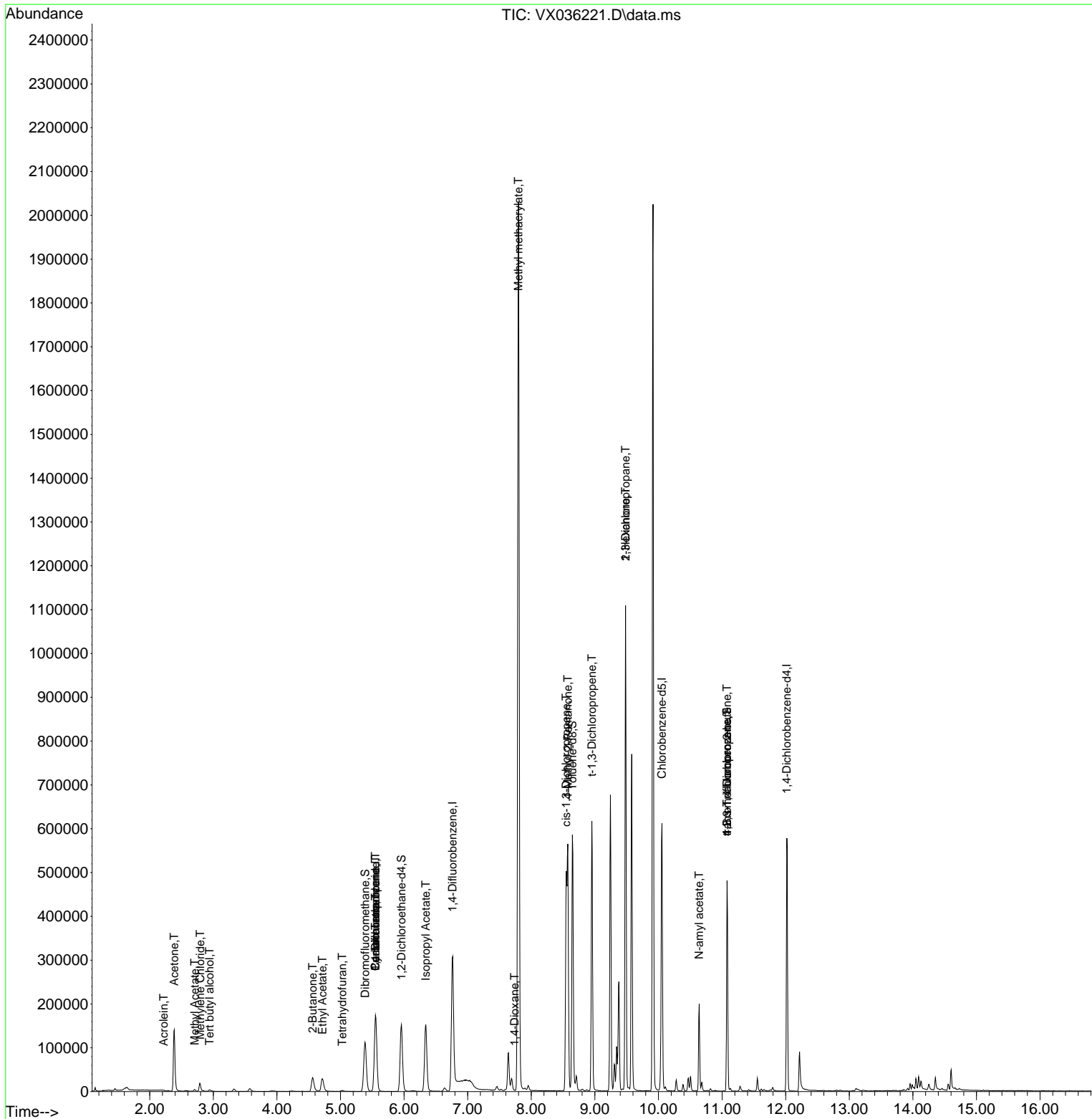
Internal Standards						
1) Pentafluorobenzene	5.550	168	141776	50.000	ug/l	0.00
34) 1,4-Difluorobenzene	6.763	114	277381	50.000	ug/l	0.00
63) Chlorobenzene-d5	10.055	117	248581	50.000	ug/l	0.00
72) 1,4-Dichlorobenzene-d4	12.018	152	109251	50.000	ug/l	0.00
System Monitoring Compounds						
33) 1,2-Dichloroethane-d4	5.958	65	157027	60.608	ug/l	0.00
Spiked Amount	50.000	Range 78 - 117	Recovery	=	121.220%#	
35) Dibromofluoromethane	5.385	113	97246	51.700	ug/l	0.00
Spiked Amount	50.000	Range 75 - 124	Recovery	=	103.400%	
50) Toluene-d8	8.647	98	326062	47.390	ug/l	0.00
Spiked Amount	50.000	Range 92 - 112	Recovery	=	94.780%	
62) 4-Bromofluorobenzene	11.079	95	123523	44.475	ug/l	0.00
Spiked Amount	50.000	Range 83 - 123	Recovery	=	88.960%	
Target Compounds						
						Qvalue
11) Tert butyl alcohol	2.940	59	3015	7.612	ug/l #	78
13) Acrolein	2.221	56	198	0.450	ug/l #	60
16) Acetone	2.386	43	163161	151.577	ug/l	99
18) Methyl Acetate	2.709	43	5125	1.255	ug/l	95
20) Methylene Chloride	2.794	84	8530	4.374	ug/l	95
25) 2-Butanone	4.562	43	54295	36.029	ug/l	96
29) Tetrahydrofuran	5.025	42	1755	1.834	ug/l #	86
31) Cyclohexane	5.550	56	4187	1.506	ug/l #	26
36) 1,1-Dichloropropene	5.550	75	14095	5.087	ug/l #	51
37) Ethyl Acetate	4.714	43	53599	16.604	ug/l	99
38) Carbon Tetrachloride	5.550	117	17083	6.342	ug/l #	18
43) Isopropyl Acetate	6.342	43	211985	42.909	ug/l	98
48) Methyl methacrylate	7.799	41	191058	75.378	ug/l #	49
49) 1,4-Dioxane	7.738	88	25	0.589	ug/l #	12
51) 4-Methyl-2-Pentanone	8.574	43	473919	151.924	ug/l #	80
53) t-1,3-Dichloropropene	8.952	75	1191	0.408	ug/l #	43
54) cis-1,3-Dichloropropene	8.549	75	67287	21.502	ug/l #	66
57) 1,3-Dichloropropane	9.482	76	8813	2.460	ug/l #	42
59) 2-Hexanone	9.482	43	134338	57.926	ug/l #	51
74) N-amyl acetate	10.640	43	55420	15.128	ug/l #	52
76) 1,2,3-Trichloropropane	11.079	75	69925	26.969	ug/l #	39
81) trans-1,4-Dichloro-2-b...	11.079	75	69925	94.396	ug/l #	5

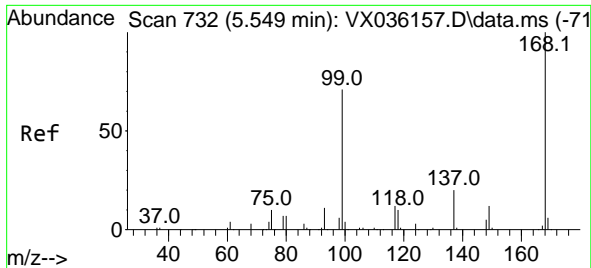
(#) = qualifier out of range (m) = manual integration (+) = signals summed

Data Path : Z:\voasrv\HPCHEM1\MSVOA_X\Data\VX061923\
 Data File : VX036221.D
 Acq On : 19 Jun 2023 21:10
 Operator : JC/MD
 Sample : PB153531ZHE#09
 Misc : 5.0mL/MSVOA_X/WATER
 ALS Vial : 24 Sample Multiplier: 1

Instrument :
 MSVOA_X
 ClientSampleId :
 PB153531ZHE#09

Quant Time: Jun 20 03:49:39 2023
 Quant Method : Z:\voasrv\HPCHEM1\MSVOA_X\Method\82X061623W.M
 Quant Title : SW846 8260
 QLast Update : Fri Jun 16 16:28:40 2023
 Response via : Initial Calibration

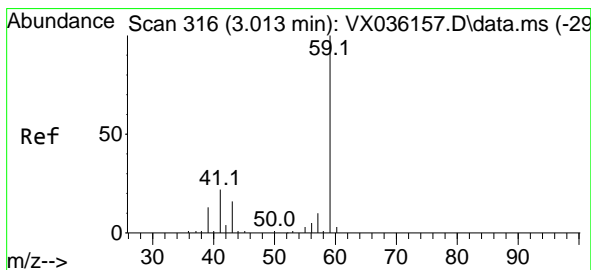
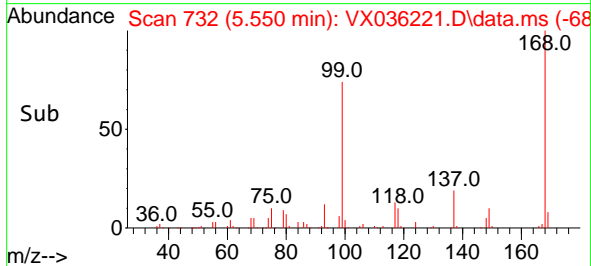
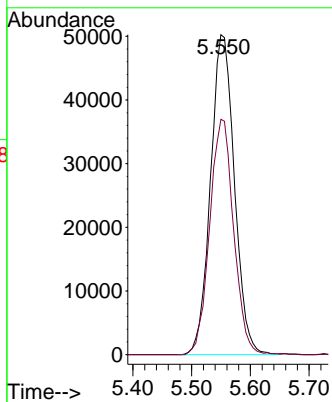
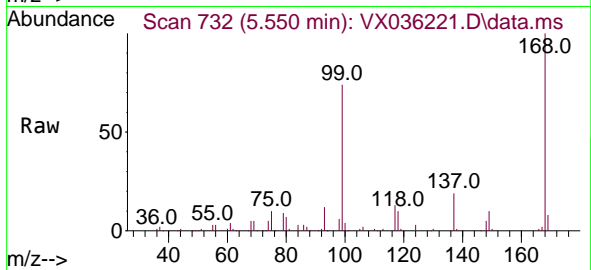




#1
 Pentafluorobenzene
 Concen: 50.000 ug/l
 RT: 5.550 min Scan# 71
 Delta R.T. 0.001 min
 Lab File: VX036221.D
 Acq: 19 Jun 2023 21:10

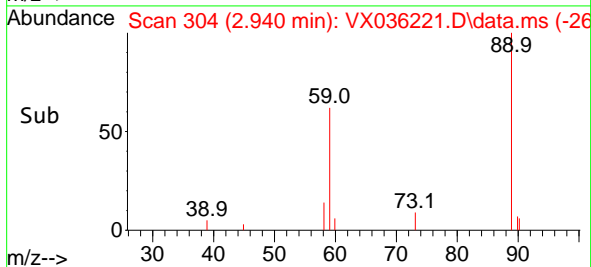
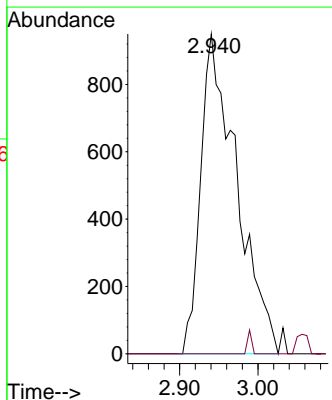
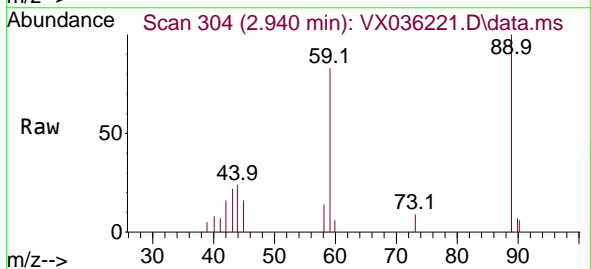
Instrument : MSVOA_X
 ClientSampleId : PB153531ZHE#09

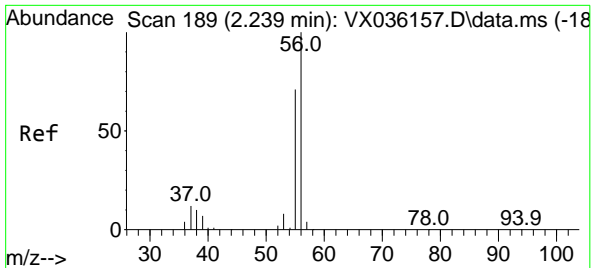
Tgt Ion:168 Resp: 141776
 Ion Ratio Lower Upper
 168 100
 99 73.5 56.6 85.0



#11
 Tert butyl alcohol
 Concen: 7.612 ug/l
 RT: 2.940 min Scan# 304
 Delta R.T. -0.073 min
 Lab File: VX036221.D
 Acq: 19 Jun 2023 21:10

Tgt Ion: 59 Resp: 3015
 Ion Ratio Lower Upper
 59 100
 57 0.0 6.0 9.0#

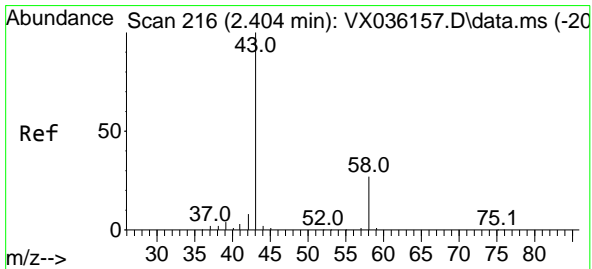
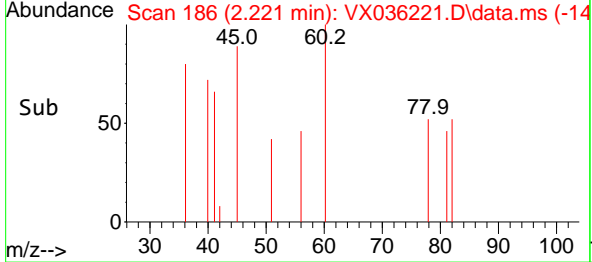
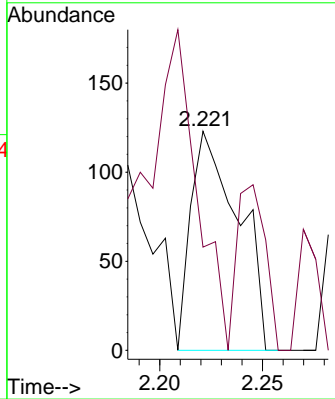
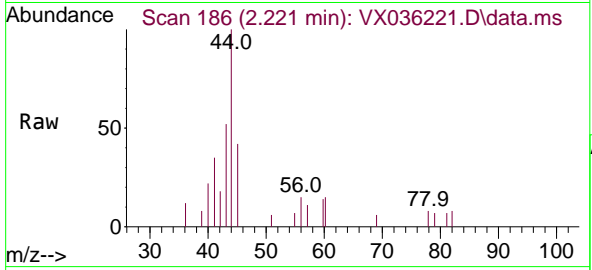




#13
 Acrolein
 Concen: 0.450 ug/l
 RT: 2.221 min Scan# 11
 Delta R.T. -0.018 min
 Lab File: VX036221.D
 Acq: 19 Jun 2023 21:10

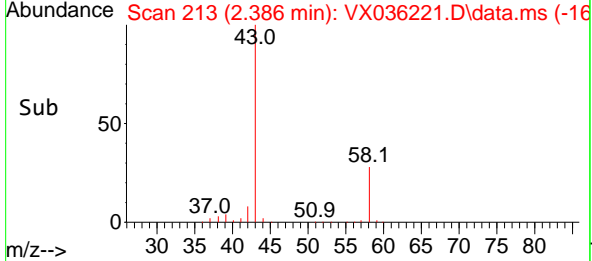
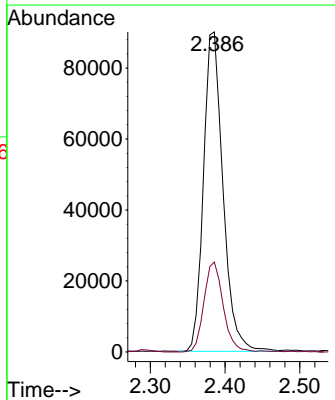
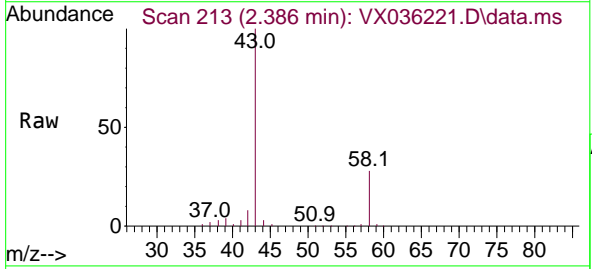
Instrument : MSVOA_X
 ClientSampleId : PB153531ZHE#09

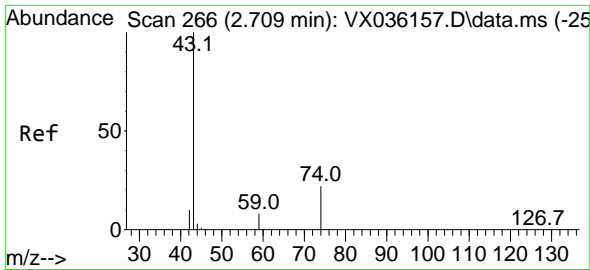
Tgt Ion: 56 Resp: 198
 Ion Ratio Lower Upper
 56 100
 55 104.5 57.1 85.7#



#16
 Acetone
 Concen: 151.577 ug/l
 RT: 2.386 min Scan# 213
 Delta R.T. -0.018 min
 Lab File: VX036221.D
 Acq: 19 Jun 2023 21:10

Tgt Ion: 43 Resp: 163161
 Ion Ratio Lower Upper
 43 100
 58 28.1 21.9 32.9

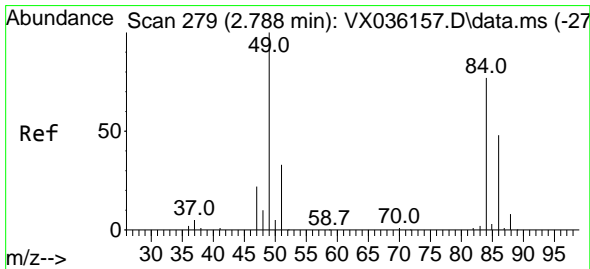
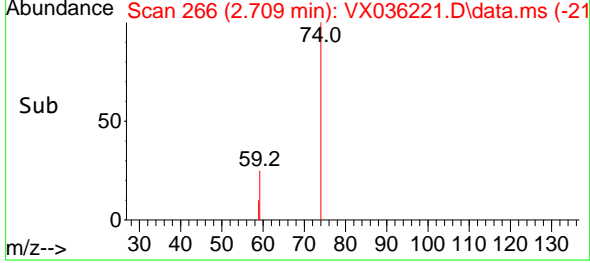
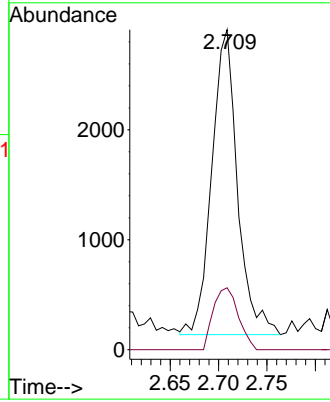
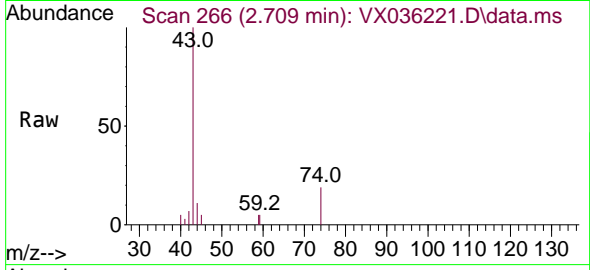




#18
 Methyl Acetate
 Concen: 1.255 ug/l
 RT: 2.709 min Scan# 20
 Delta R.T. -0.000 min
 Lab File: VX036221.D
 Acq: 19 Jun 2023 21:10

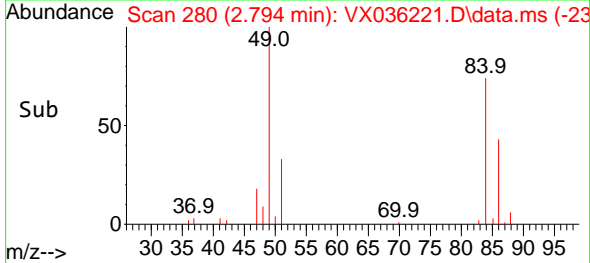
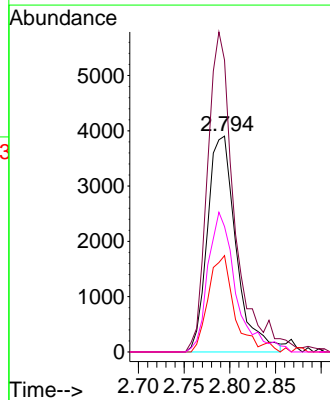
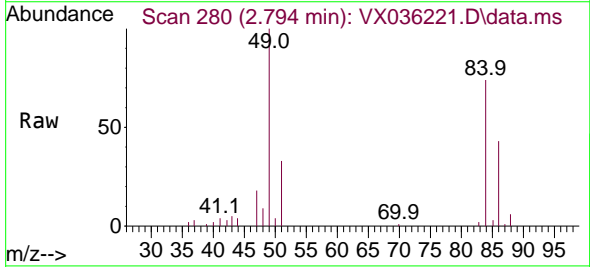
Instrument : MSVOA_X
 ClientSampleId : PB153531ZHE#09

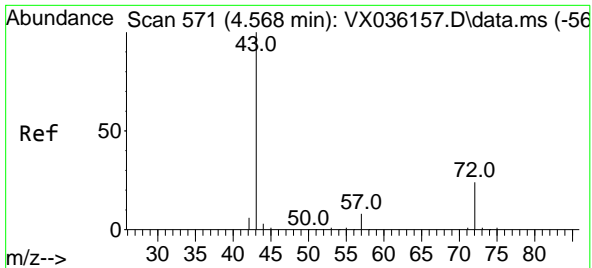
Tgt Ion: 43 Resp: 5125
 Ion Ratio Lower Upper
 43 100
 74 19.7 17.8 26.8



#20
 Methylene Chloride
 Concen: 4.374 ug/l
 RT: 2.794 min Scan# 280
 Delta R.T. 0.006 min
 Lab File: VX036221.D
 Acq: 19 Jun 2023 21:10

Tgt Ion: 84 Resp: 8530
 Ion Ratio Lower Upper
 84 100
 49 135.2 103.6 155.4
 51 44.6 33.8 50.6
 86 58.1 49.4 74.0

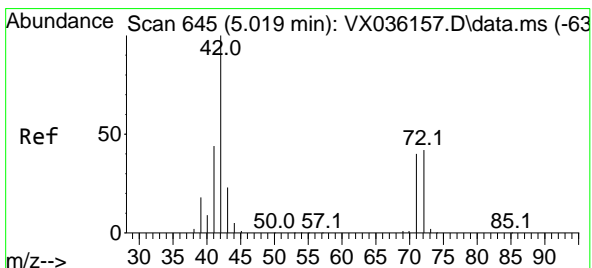
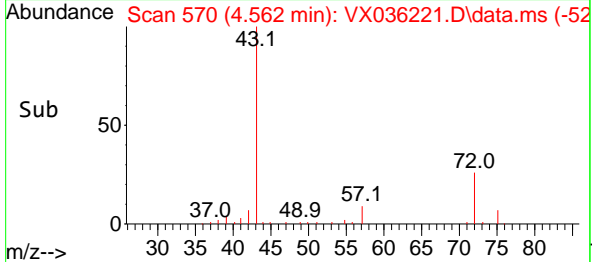
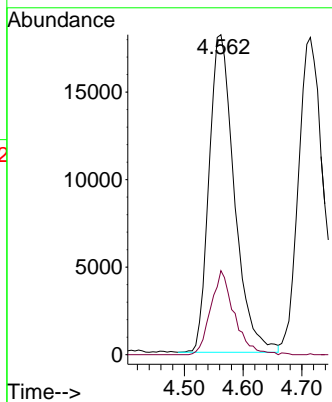
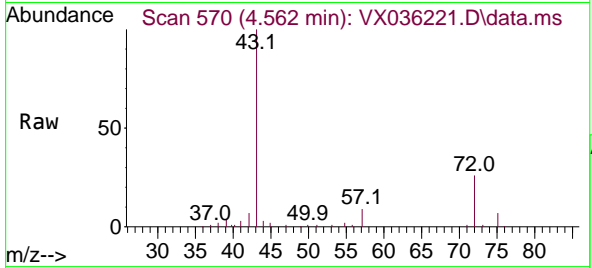




#25
 2-Butanone
 Concen: 36.029 ug/l
 RT: 4.562 min Scan# 51
 Delta R.T. -0.006 min
 Lab File: VX036221.D
 Acq: 19 Jun 2023 21:10

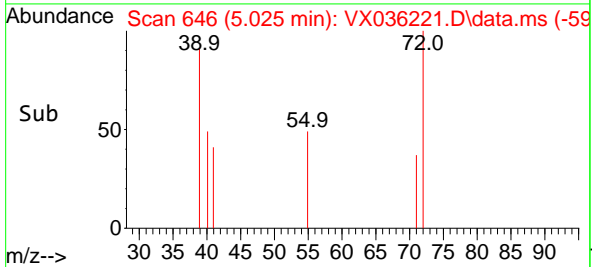
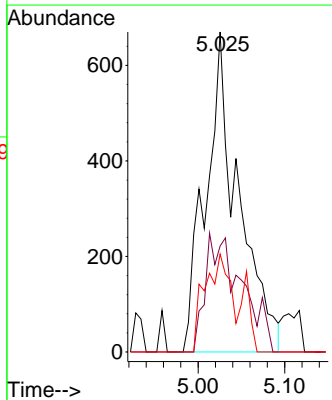
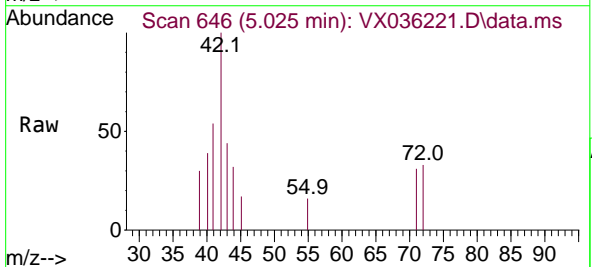
Instrument : MSVOA_X
 ClientSampleId : PB153531ZHE#09

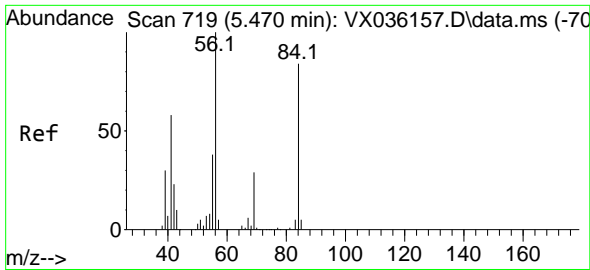
Tgt Ion: 43 Resp: 54295
 Ion Ratio Lower Upper
 43 100
 72 26.5 19.4 29.2



#29
 Tetrahydrofuran
 Concen: 1.834 ug/l
 RT: 5.025 min Scan# 646
 Delta R.T. 0.006 min
 Lab File: VX036221.D
 Acq: 19 Jun 2023 21:10

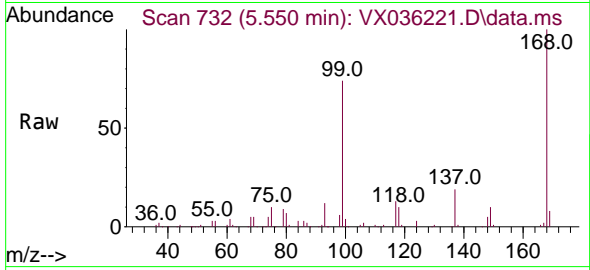
Tgt Ion: 42 Resp: 1755
 Ion Ratio Lower Upper
 42 100
 72 41.3 34.2 51.4
 71 24.0 32.2 48.2#



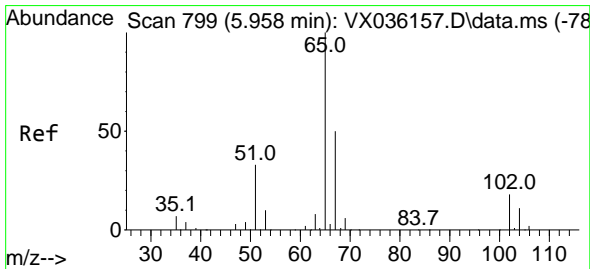
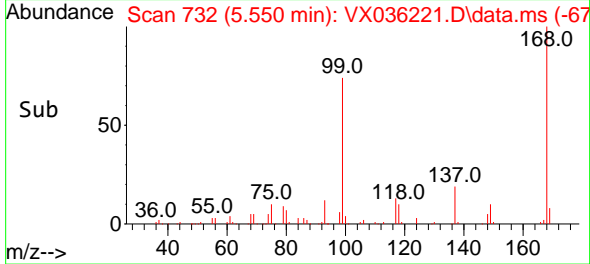
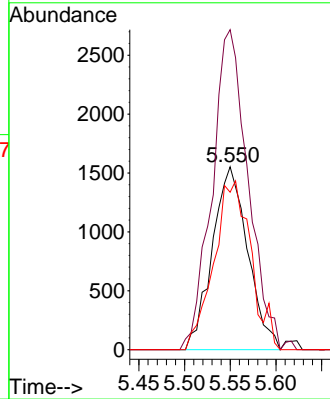


#31
 Cyclohexane
 Concen: 1.506 ug/l
 RT: 5.550 min Scan# 719
 Delta R.T. 0.080 min
 Lab File: VX036221.D
 Acq: 19 Jun 2023 21:10

Instrument : MSVOA_X
 ClientSampleId : PB153531ZHE#09

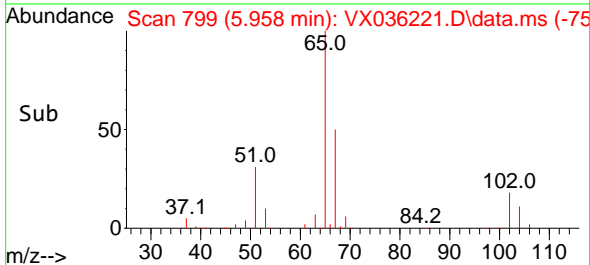
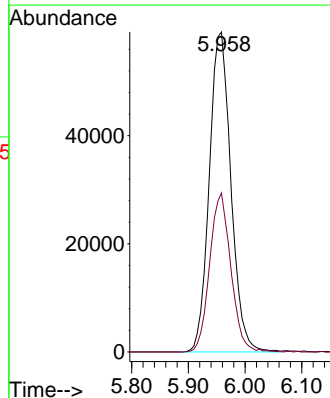
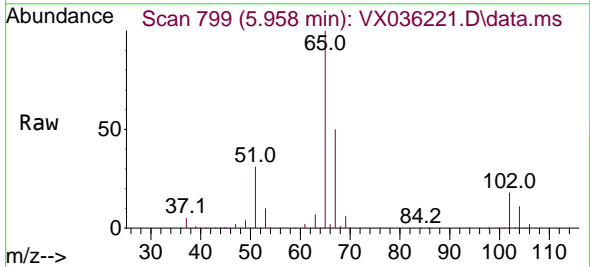


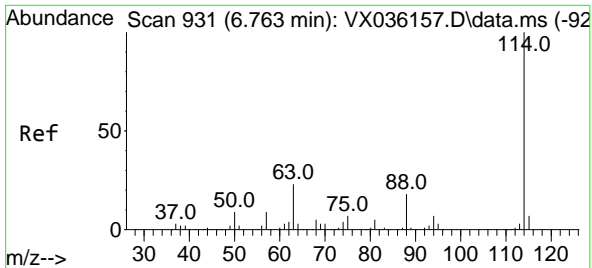
Tgt Ion: 56 Resp: 4187
 Ion Ratio Lower Upper
 56 100
 69 175.1 23.4 35.2#
 84 86.1 65.9 98.9



#33
 1,2-Dichloroethane-d4
 Concen: 60.608 ug/l
 RT: 5.958 min Scan# 799
 Delta R.T. 0.000 min
 Lab File: VX036221.D
 Acq: 19 Jun 2023 21:10

Tgt Ion: 65 Resp: 157027
 Ion Ratio Lower Upper
 65 100
 67 48.5 0.0 100.2



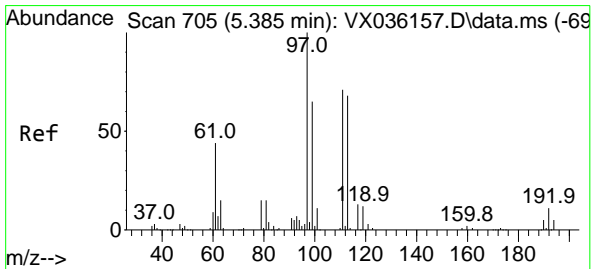
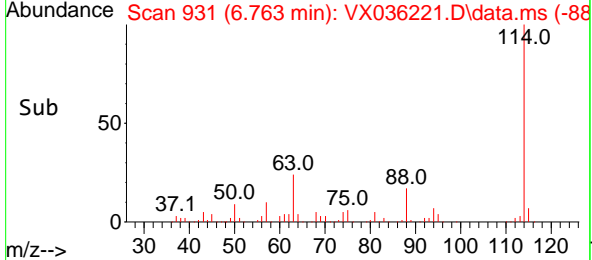
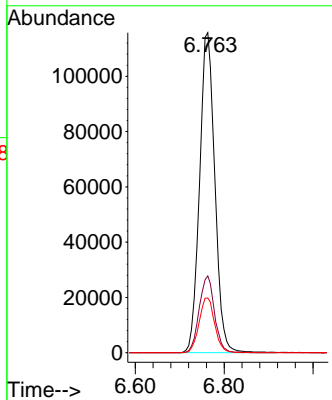
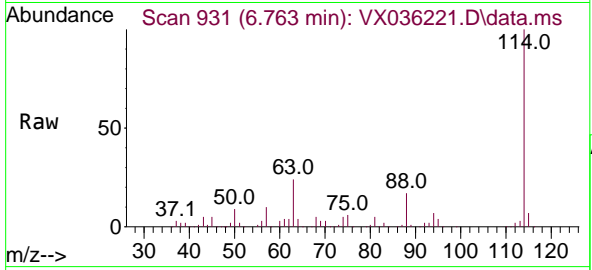


#34
 1,4-Difluorobenzene
 Concen: 50.000 ug/l
 RT: 6.763 min Scan# 911
 Delta R.T. -0.000 min
 Lab File: VX036221.D
 Acq: 19 Jun 2023 21:10

Instrument : MSVOA_X
 ClientSampleId : PB153531ZHE#09

Tgt Ion:114 Resp: 277381

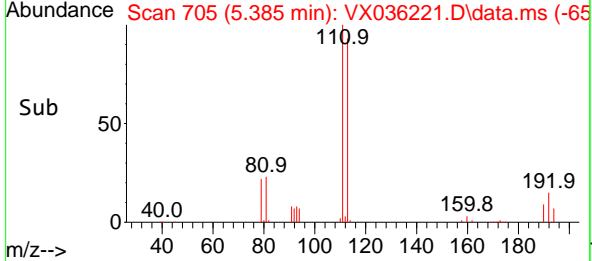
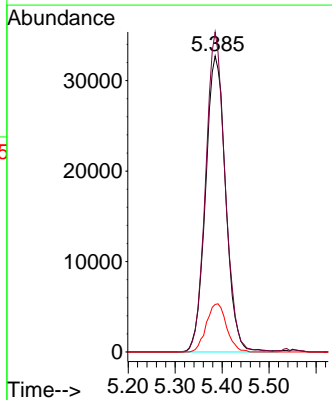
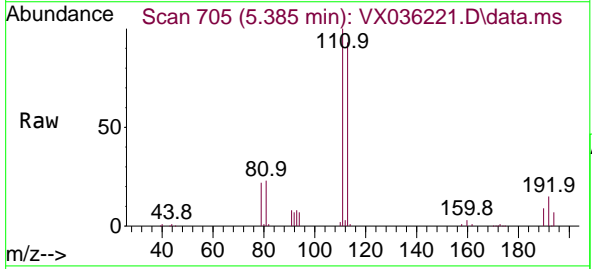
Ion	Ratio	Lower	Upper
114	100		
63	24.0	0.0	45.0
88	17.1	0.0	36.6

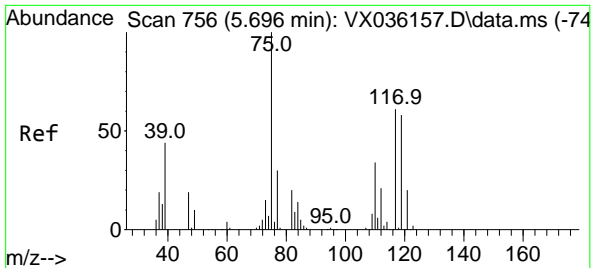


#35
 Dibromofluoromethane
 Concen: 51.700 ug/l
 RT: 5.385 min Scan# 705
 Delta R.T. 0.000 min
 Lab File: VX036221.D
 Acq: 19 Jun 2023 21:10

Tgt Ion:113 Resp: 97246

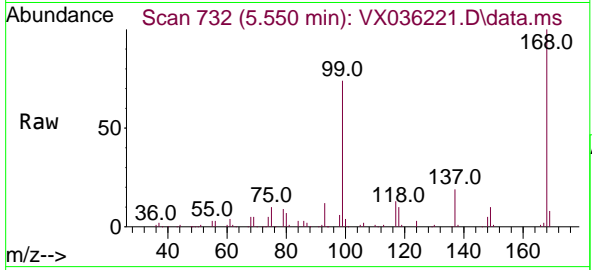
Ion	Ratio	Lower	Upper
113	100		
111	104.5	82.9	124.3
192	16.3	13.3	19.9





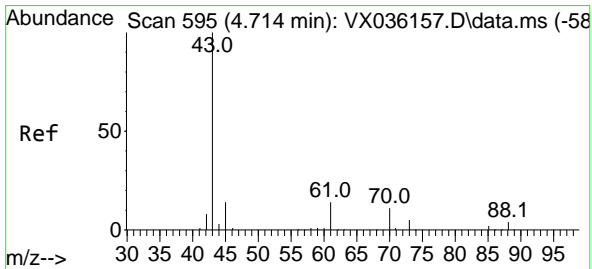
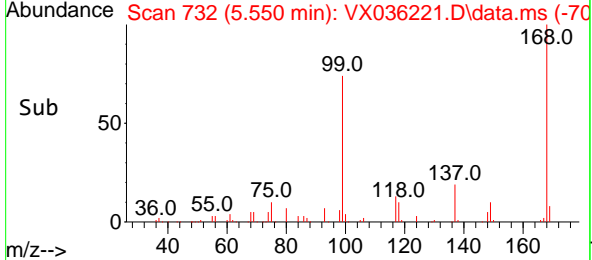
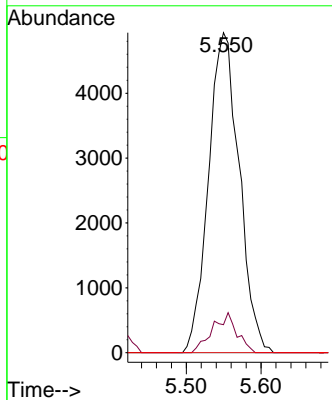
#36
 1,1-Dichloropropene
 Concen: 5.087 ug/l
 RT: 5.550 min Scan# 71
 Delta R.T. -0.146 min
 Lab File: VX036221.D
 Acq: 19 Jun 2023 21:10

Instrument : MSVOA_X
 ClientSampleId : PB153531ZHE#09



Tgt Ion: 75 Resp: 14095

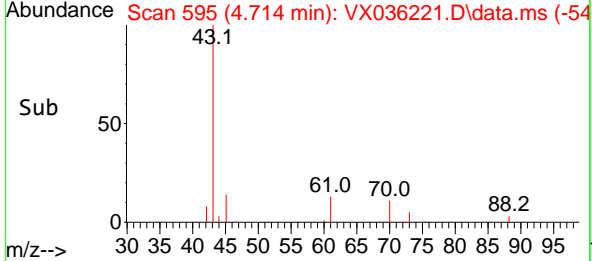
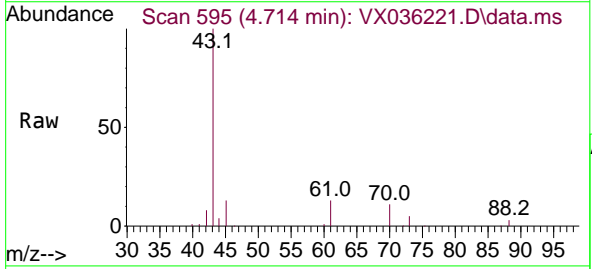
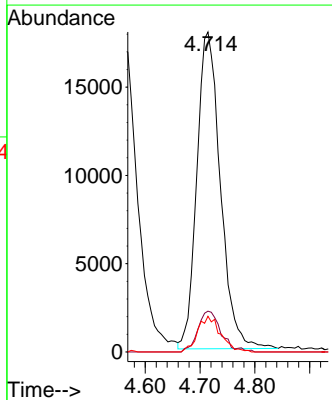
Ion	Ratio	Lower	Upper
75	100		
110	9.9	17.0	50.9#
77	0.0	24.7	37.1#

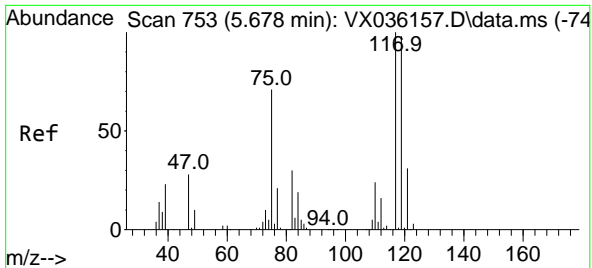


#37
 Ethyl Acetate
 Concen: 16.604 ug/l
 RT: 4.714 min Scan# 595
 Delta R.T. 0.000 min
 Lab File: VX036221.D
 Acq: 19 Jun 2023 21:10

Tgt Ion: 43 Resp: 53599

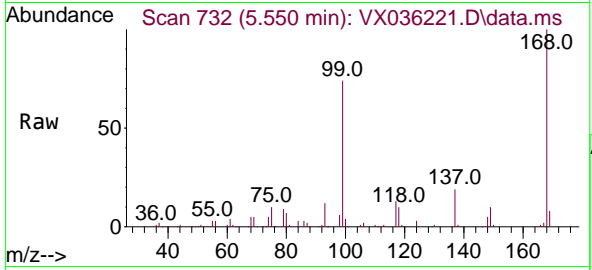
Ion	Ratio	Lower	Upper
43	100		
61	12.7	10.6	16.0
70	10.9	8.3	12.5



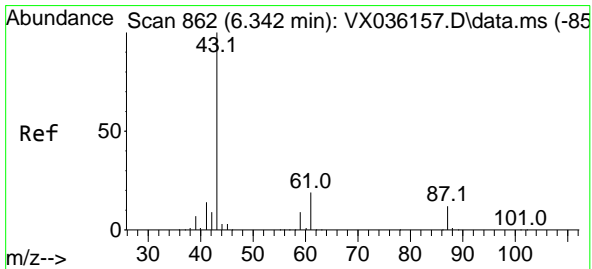
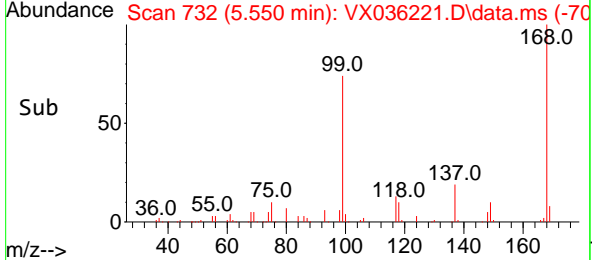
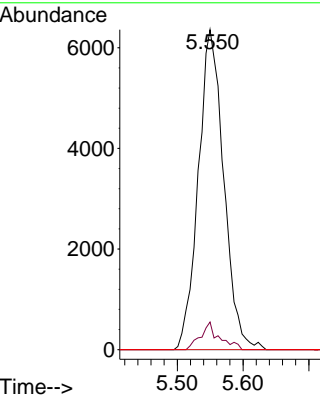


#38
 Carbon Tetrachloride
 Concen: 6.342 ug/l
 RT: 5.550 min Scan# 711
 Delta R.T. -0.128 min
 Lab File: VX036221.D
 Acq: 19 Jun 2023 21:10

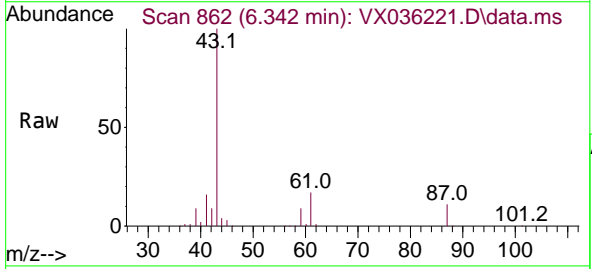
Instrument : MSVOA_X
 ClientSampleId : PB153531ZHE#09



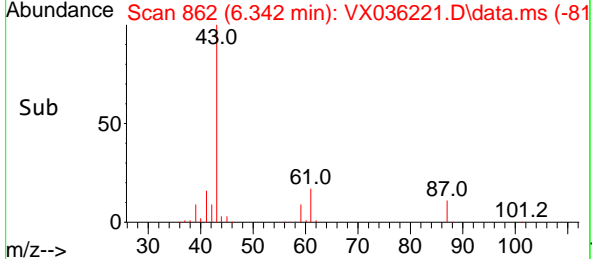
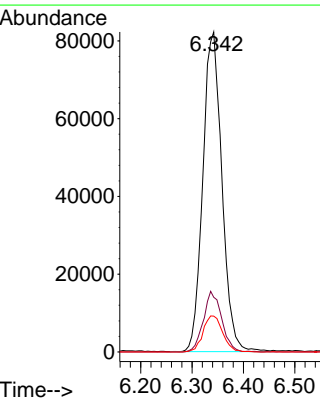
Tgt Ion:117 Resp: 17083
 Ion Ratio Lower Upper
 117 100
 119 8.6 78.2 117.2#
 121 0.0 24.4 36.6#

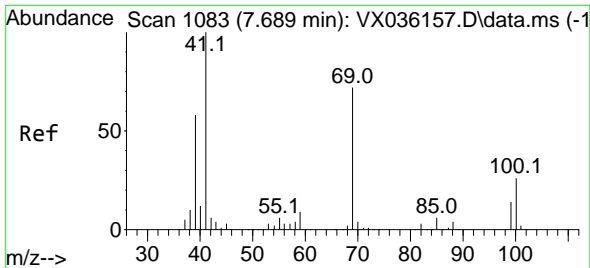


#43
 Isopropyl Acetate
 Concen: 42.909 ug/l
 RT: 6.342 min Scan# 862
 Delta R.T. 0.000 min
 Lab File: VX036221.D
 Acq: 19 Jun 2023 21:10



Tgt Ion: 43 Resp: 211985
 Ion Ratio Lower Upper
 43 100
 61 18.1 15.2 22.8
 87 11.6 9.8 14.6

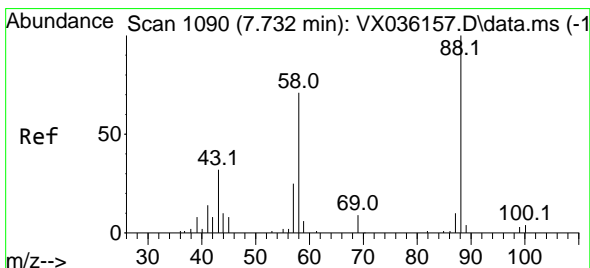
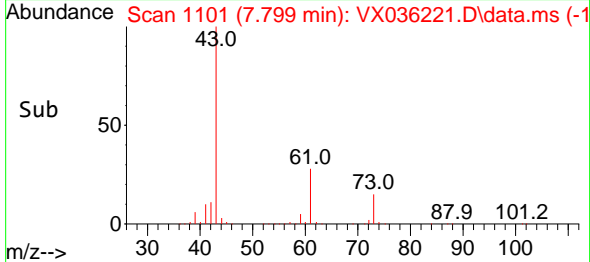
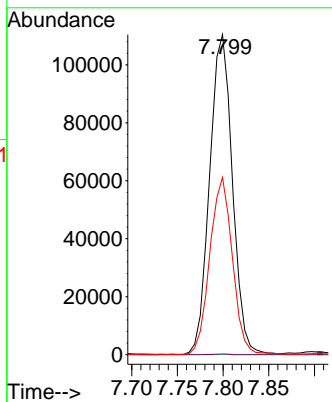
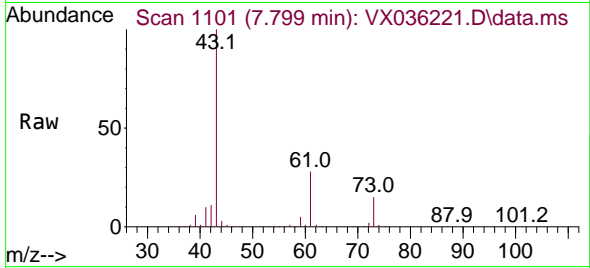




#48
 Methyl methacrylate
 Concen: 75.378 ug/l
 RT: 7.799 min Scan# 1101
 Delta R.T. 0.110 min
 Lab File: VX036221.D
 Acq: 19 Jun 2023 21:10

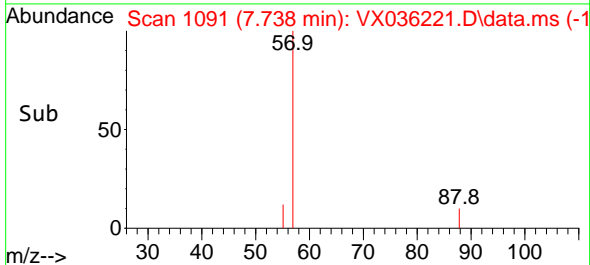
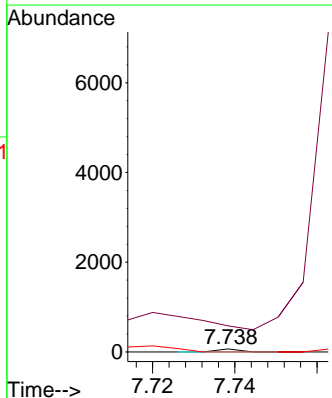
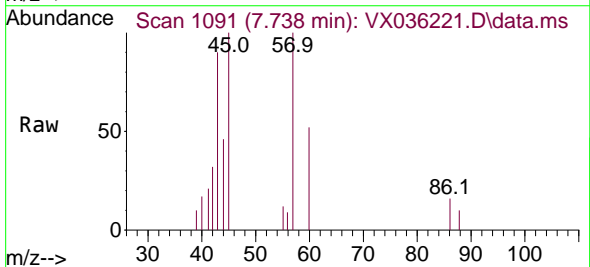
Instrument : MSVOA_X
 ClientSampleId : PB153531ZHE#09

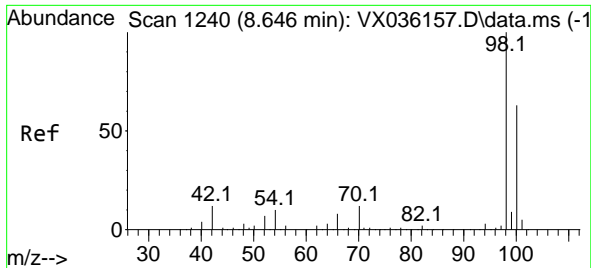
Tgt Ion	Resp	Lower	Upper
41	191058		
69	0.1	59.2	88.8#
39	55.2	47.7	71.5



#49
 1,4-Dioxane
 Concen: 0.589 ug/l
 RT: 7.738 min Scan# 1091
 Delta R.T. 0.006 min
 Lab File: VX036221.D
 Acq: 19 Jun 2023 21:10

Tgt Ion	Resp	Lower	Upper
88	25		
43	0.0	0.0	0.0
58	0.0	60.1	90.1#

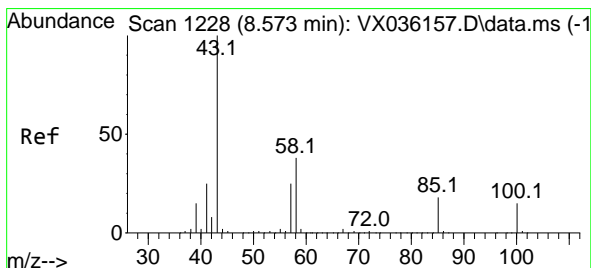
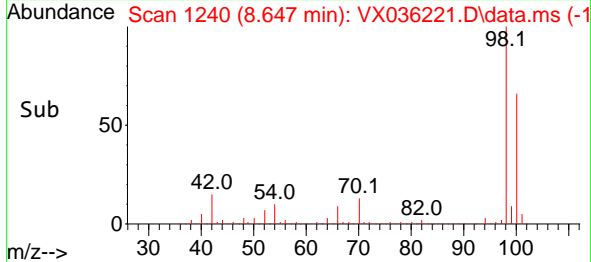
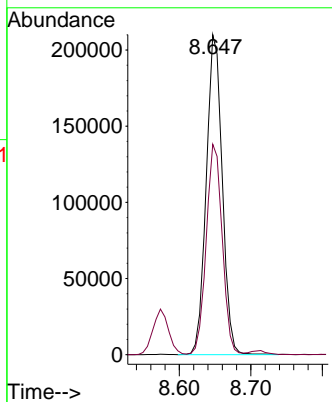
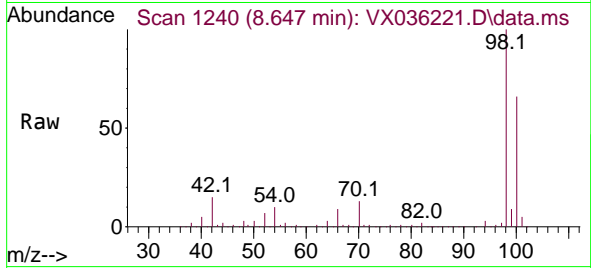




#50
 Toluene-d8
 Concen: 47.390 ug/l
 RT: 8.647 min Scan# 11
 Delta R.T. 0.001 min
 Lab File: VX036221.D
 Acq: 19 Jun 2023 21:10

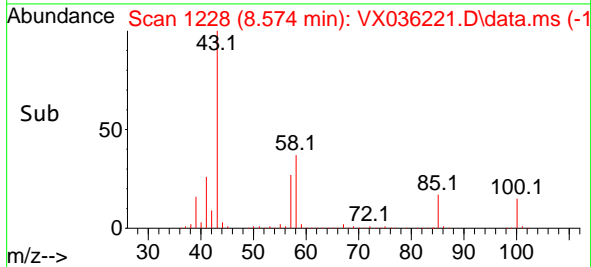
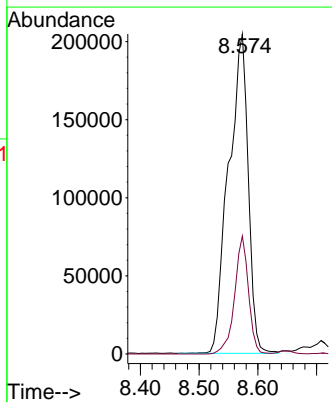
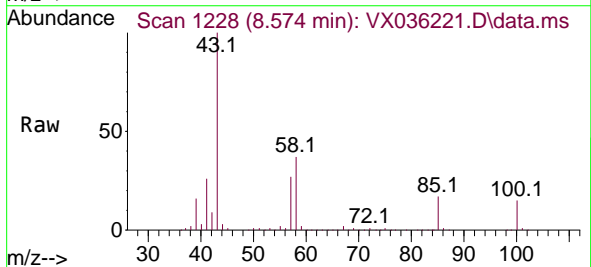
Instrument : MSVOA_X
 ClientSampleId : PB153531ZHE#09

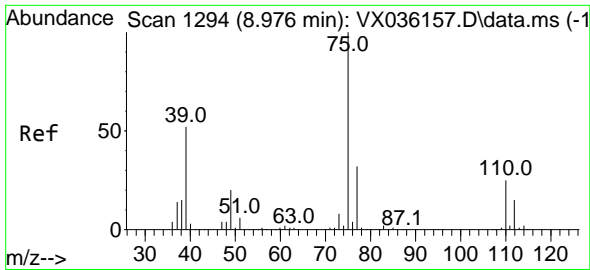
Tgt Ion: 98 Resp: 326062
 Ion Ratio Lower Upper
 98 100
 100 65.7 53.1 79.7



#51
 4-Methyl-2-Pentanone
 Concen: 151.924 ug/l
 RT: 8.574 min Scan# 1228
 Delta R.T. 0.001 min
 Lab File: VX036221.D
 Acq: 19 Jun 2023 21:10

Tgt Ion: 43 Resp: 473919
 Ion Ratio Lower Upper
 43 100
 58 26.2 30.4 45.6#

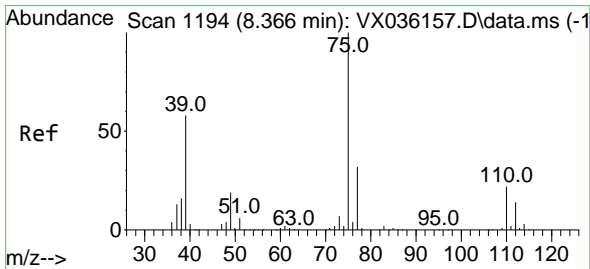
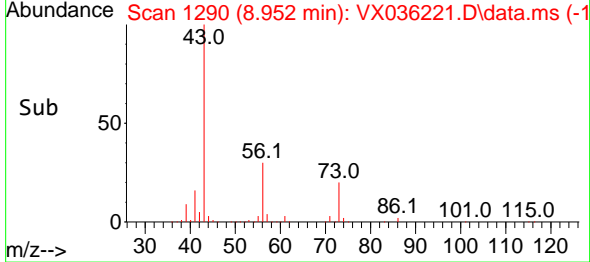
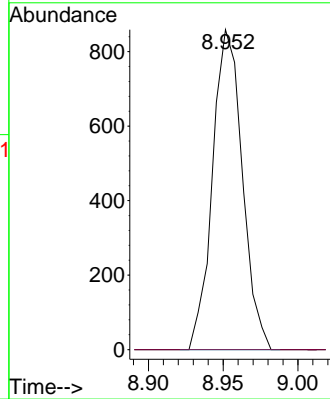
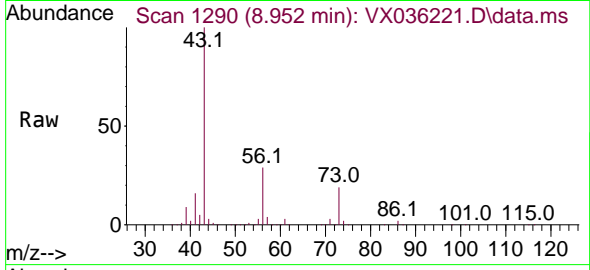




#53
 t-1,3-Dichloropropene
 Concen: 0.408 ug/l
 RT: 8.952 min Scan# 1191
 Delta R.T. -0.024 min
 Lab File: VX036221.D
 Acq: 19 Jun 2023 21:10

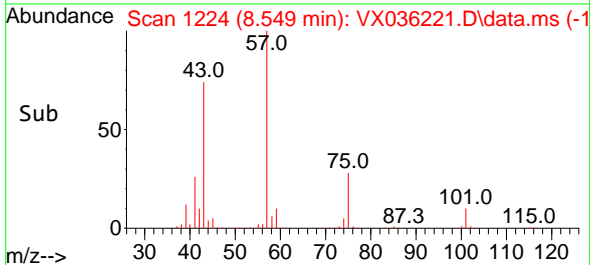
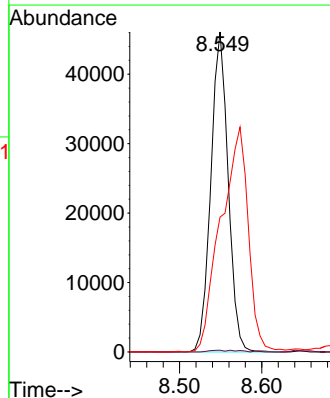
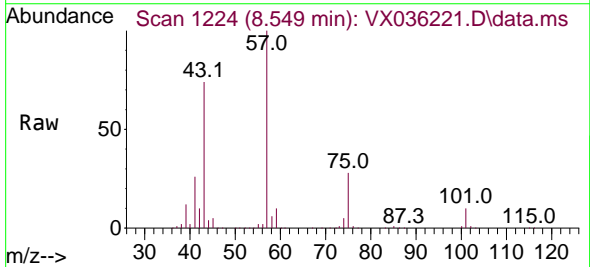
Instrument : MSVOA_X
 ClientSampleId : PB153531ZHE#09

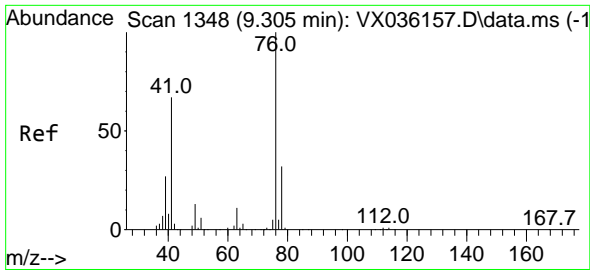
Tgt Ion: 75 Resp: 1191
 Ion Ratio Lower Upper
 75 100
 77 0.0 25.7 38.5#



#54
 cis-1,3-Dichloropropene
 Concen: 21.502 ug/l
 RT: 8.549 min Scan# 1224
 Delta R.T. 0.183 min
 Lab File: VX036221.D
 Acq: 19 Jun 2023 21:10

Tgt Ion: 75 Resp: 67287
 Ion Ratio Lower Upper
 75 100
 77 0.5 25.3 37.9#
 39 42.0 46.7 70.1#

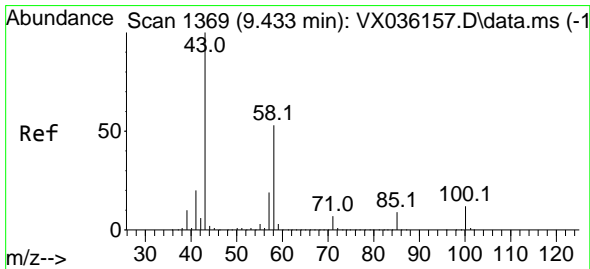
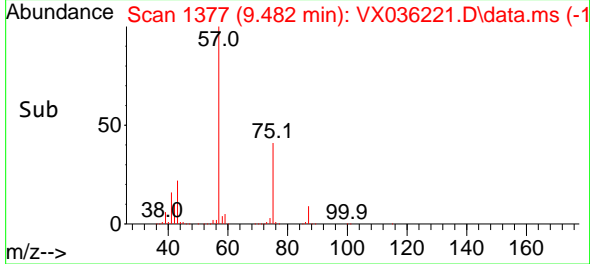
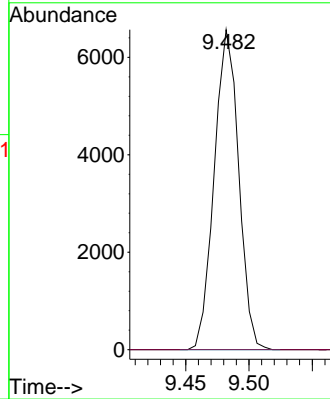
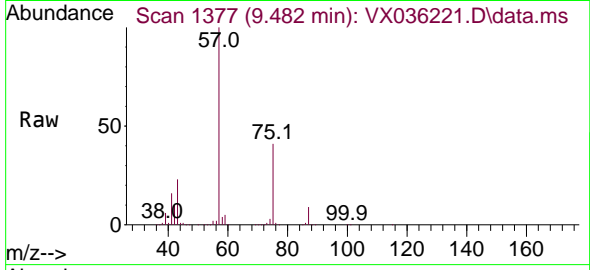




#57
 1,3-Dichloropropane
 Concen: 2.460 ug/l
 RT: 9.482 min Scan# 1377
 Delta R.T. 0.177 min
 Lab File: VX036221.D
 Acq: 19 Jun 2023 21:10

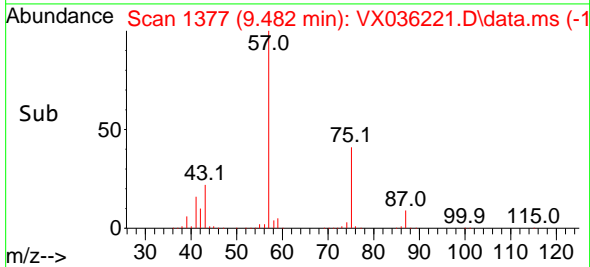
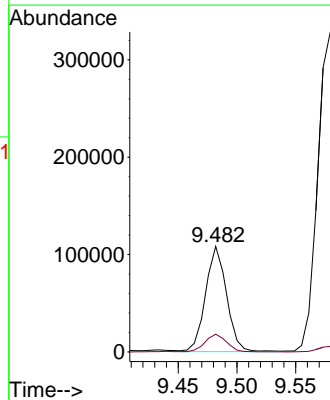
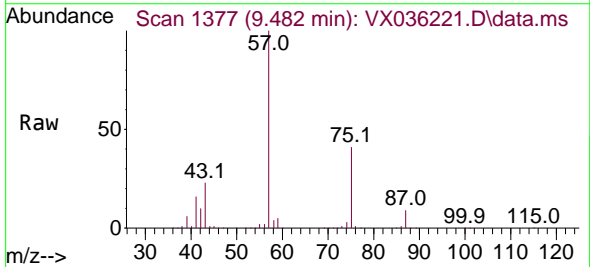
Instrument : MSVOA_X
 ClientSampleId : PB153531ZHE#09

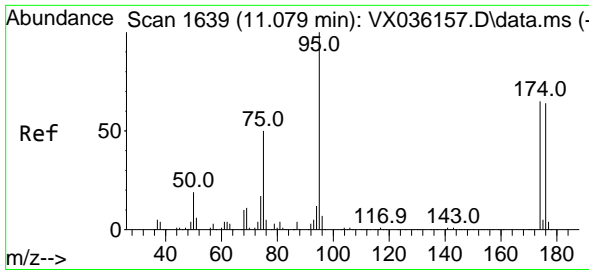
Tgt Ion: 76 Resp: 8813
 Ion Ratio Lower Upper
 76 100
 78 0.0 26.1 39.1#



#59
 2-Hexanone
 Concen: 57.926 ug/l
 RT: 9.482 min Scan# 1377
 Delta R.T. 0.049 min
 Lab File: VX036221.D
 Acq: 19 Jun 2023 21:10

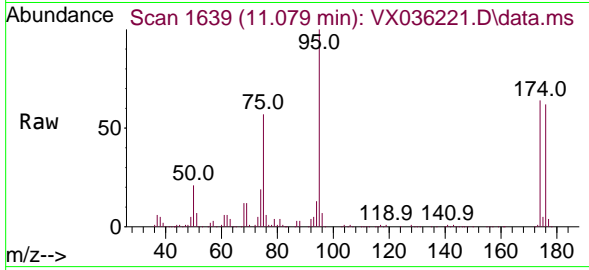
Tgt Ion: 43 Resp: 134338
 Ion Ratio Lower Upper
 43 100
 58 17.6 26.2 78.5#



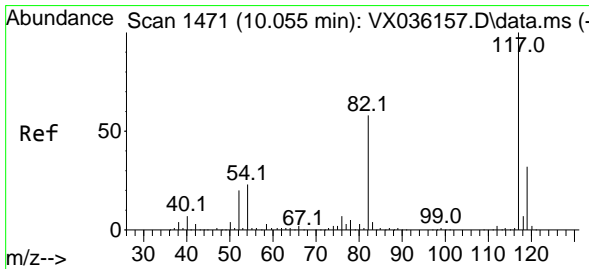
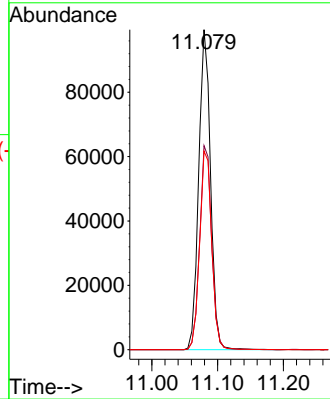
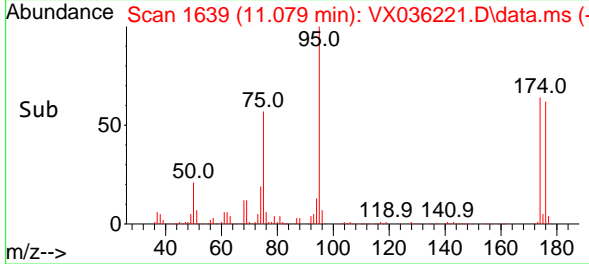


#62
 4-Bromofluorobenzene
 Concen: 44.475 ug/l
 RT: 11.079 min Scan# 1639
 Delta R.T. 0.000 min
 Lab File: VX036221.D
 Acq: 19 Jun 2023 21:10

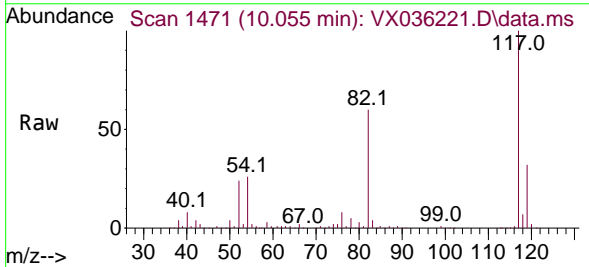
Instrument : MSVOA_X
 ClientSampleId : PB153531ZHE#09



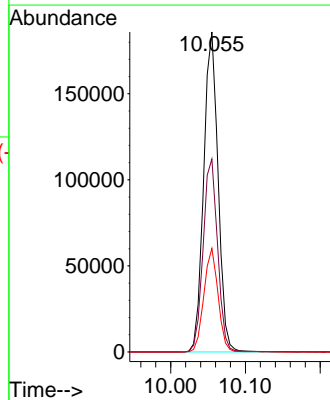
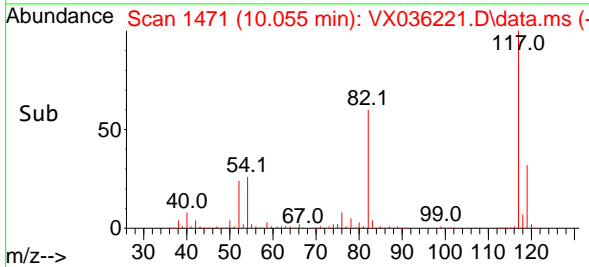
Tgt Ion: 95 Resp: 123523
 Ion Ratio Lower Upper
 95 100
 174 64.8 0.0 135.6
 176 63.6 0.0 131.0

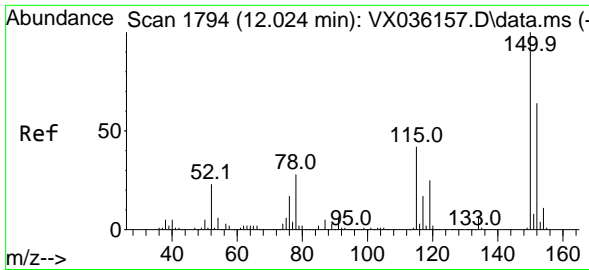


#63
 Chlorobenzene-d5
 Concen: 50.000 ug/l
 RT: 10.055 min Scan# 1471
 Delta R.T. -0.000 min
 Lab File: VX036221.D
 Acq: 19 Jun 2023 21:10



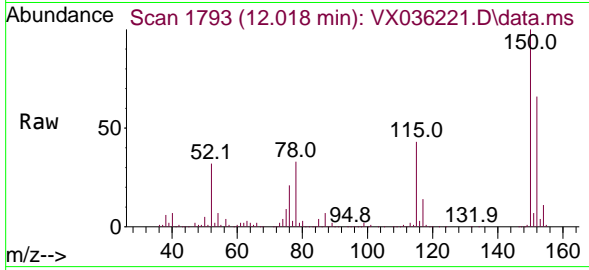
Tgt Ion: 117 Resp: 248581
 Ion Ratio Lower Upper
 117 100
 82 60.3 46.2 69.4
 119 32.4 25.5 38.3



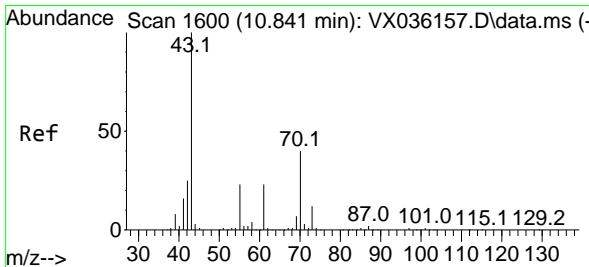
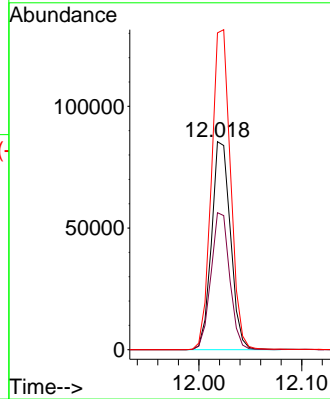
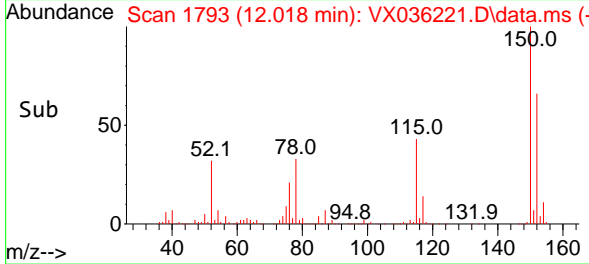


#72
 1,4-Dichlorobenzene-d4
 Concen: 50.000 ug/l
 RT: 12.018 min Scan# 11
 Delta R.T. -0.006 min
 Lab File: VX036221.D
 Acq: 19 Jun 2023 21:10

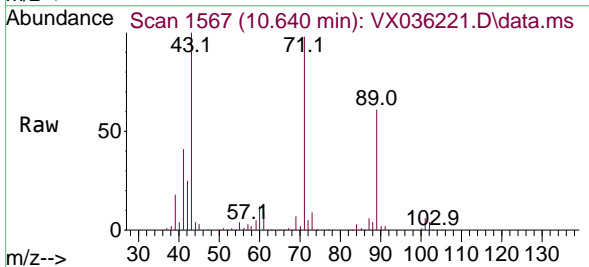
Instrument : MSVOA_X
 ClientSampleId : PB153531ZHE#09



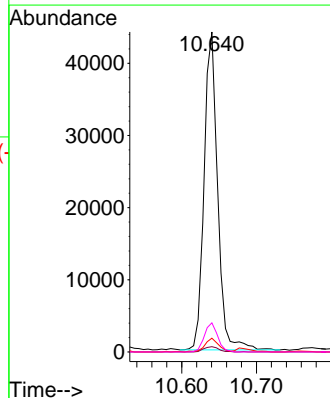
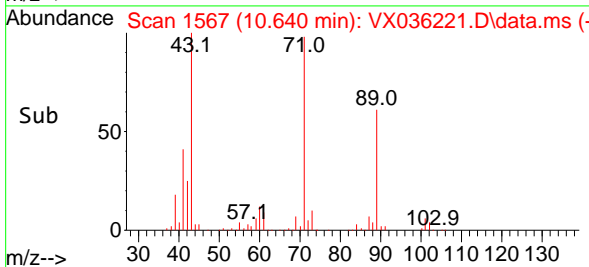
Tgt Ion:152 Resp: 109251
 Ion Ratio Lower Upper
 152 100
 115 65.2 43.3 129.9
 150 155.1 0.0 345.0

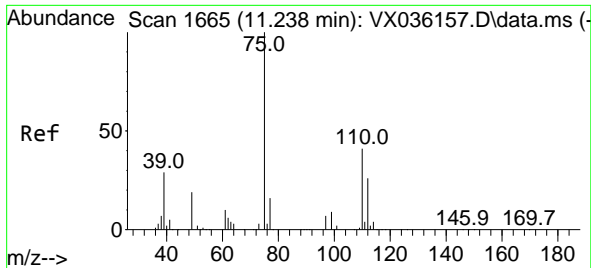


#74
 N-amy1 acetate
 Concen: 15.128 ug/l
 RT: 10.640 min Scan# 1567
 Delta R.T. -0.201 min
 Lab File: VX036221.D
 Acq: 19 Jun 2023 21:10



Tgt Ion: 43 Resp: 55420
 Ion Ratio Lower Upper
 43 100
 70 1.8 32.9 49.3#
 55 4.4 19.3 28.9#
 61 9.0 18.8 28.2#

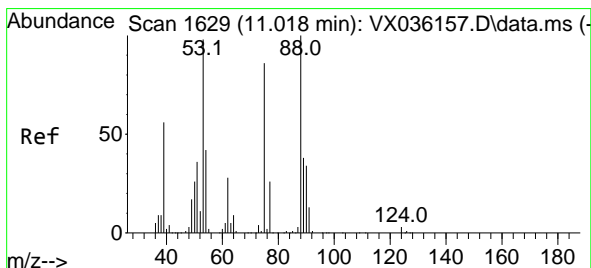
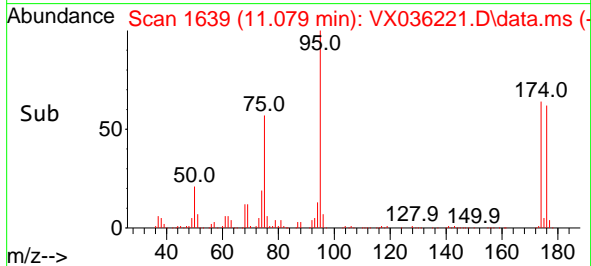
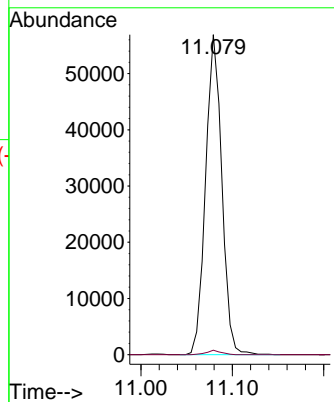
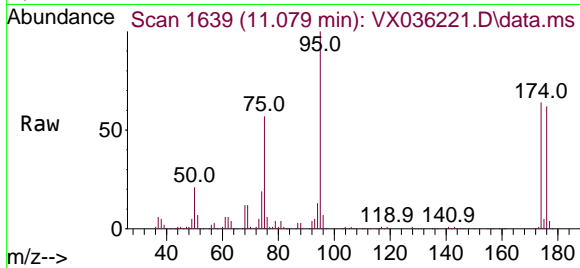




#76
 1,2,3-Trichloropropane
 Concen: 26.969 ug/l
 RT: 11.079 min Scan# 1639
 Delta R.T. -0.159 min
 Lab File: VX036221.D
 Acq: 19 Jun 2023 21:10

Instrument : MSVOA_X
 ClientSampleId : PB153531ZHE#09

Tgt Ion: 75 Resp: 69925
 Ion Ratio Lower Upper
 75 100
 77 1.3 19.1 57.5#



#81
 trans-1,4-Dichloro-2-butene
 Concen: 94.396 ug/l
 RT: 11.079 min Scan# 1639
 Delta R.T. 0.061 min
 Lab File: VX036221.D
 Acq: 19 Jun 2023 21:10

Tgt Ion: 75 Resp: 69925
 Ion Ratio Lower Upper
 75 100
 53 0.1 90.5 135.7#
 89 0.0 36.9 55.3#

