

Data Path : Z:\voasrv\HPCHEM1\MSVOA_X\Data\VX062022\
 Data File : VX029654.D
 Acq On : 21 Jun 2022 10:24
 Operator : JC/MD
 Sample : N3354-17
 Misc : 5.0mL/MSVOA_X/WATER
 ALS Vial : 49 Sample Multiplier: 1

Instrument :
 MSVOA_X
 ClientSampleId :
 MW-61

Quant Time: Jun 21 17:09:53 2022
 Quant Method : Z:\voasrv\HPCHEM1\MSVOA_X\Method\82X061822W.M
 Quant Title : SW846 8260
 QLast Update : Mon Jun 20 01:31:01 2022
 Response via : Initial Calibration

Compound	R.T.	QIon	Response	Conc	Units	Dev(Min)

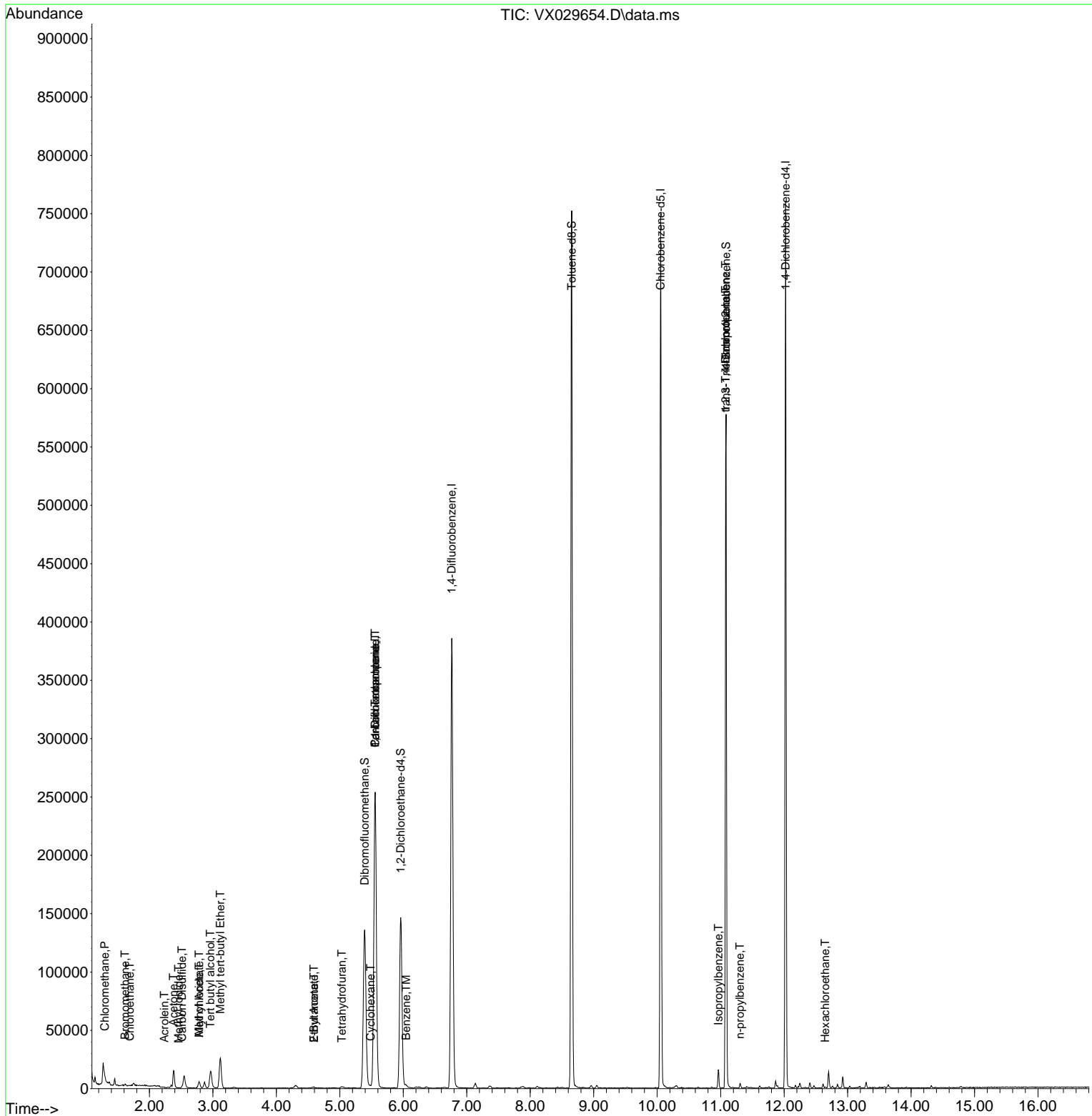
Internal Standards						
1) Pentafluorobenzene	5.556	168	242168	50.000	ug/l	0.00
34) 1,4-Difluorobenzene	6.763	114	411056	50.000	ug/l	0.00
63) Chlorobenzene-d5	10.055	117	352987	50.000	ug/l	0.00
72) 1,4-Dichlorobenzene-d4	12.024	152	155991	50.000	ug/l	0.00
System Monitoring Compounds						
33) 1,2-Dichloroethane-d4	5.958	65	141403	44.111	ug/l	0.00
Spiked Amount	50.000	Range	74 - 125	Recovery	=	88.220%
35) Dibromofluoromethane	5.391	113	124614	46.519	ug/l	0.00
Spiked Amount	50.000	Range	75 - 124	Recovery	=	93.040%
50) Toluene-d8	8.653	98	461418	47.150	ug/l	0.00
Spiked Amount	50.000	Range	86 - 113	Recovery	=	94.300%
62) 4-Bromofluorobenzene	11.085	95	167468	45.378	ug/l	0.00
Spiked Amount	50.000	Range	83 - 123	Recovery	=	90.760%
Target Compounds						
						Qvalue
3) Chloromethane	1.294	50	1449	0.459	ug/l #	88
5) Bromomethane	1.617	94	587	0.396	ug/l	86
6) Chloroethane	1.691	64	267	1.407	ug/l #	43
10) Methyl Iodide	2.459	142	330	3.125	ug/l #	73
11) Tert butyl alcohol	2.959	59	19077	18.749	ug/l	100
13) Acrolein	2.233	56	46	0.260	ug/l #	1
14) Allyl chloride	2.782	41	1379	0.348	ug/l #	67
16) Acetone	2.380	43	16869	13.202	ug/l	99
17) Carbon Disulfide	2.514	76	1916	0.301	ug/l	99
18) Methyl Acetate	2.782	43	3770	1.116	ug/l #	46
19) Methyl tert-butyl Ether	3.117	73	30107	3.535	ug/l	98
25) 2-Butanone	4.593	43	1804	0.893	ug/l	90
29) Tetrahydrofuran	5.032	42	1020	0.758	ug/l #	83
31) Cyclohexane	5.483	56	1281	0.298	ug/l #	80
36) 1,1-Dichloropropene	5.556	75	18737	5.168	ug/l #	49
37) Ethyl Acetate	4.593	43	1804	0.485	ug/l #	65
38) Carbon Tetrachloride	5.556	117	24912	6.987	ug/l #	15
40) Benzene	6.044	78	2457	0.229	ug/l	99
44) Trichloroethene	7.135	130	1526	Below Cal		99
73) Isopropylbenzene	10.963	105	8082	0.691	ug/l	99
76) 1,2,3-Trichloropropane	11.079	75	79062	23.265	ug/l #	38
78) n-propylbenzene	11.305	91	2829	0.215	ug/l	98
81) trans-1,4-Dichloro-2-b...	11.079	75	79062	77.398	ug/l #	15
90) Hexachloroethane	12.646	117	556	0.390	ug/l #	10

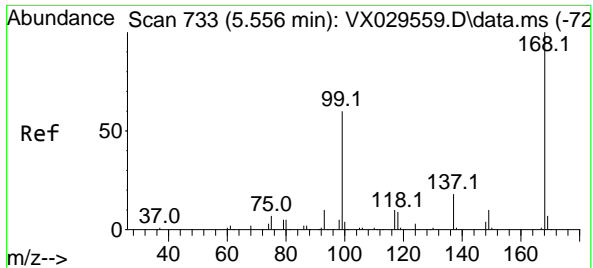
(#) = qualifier out of range (m) = manual integration (+) = signals summed

Data Path : Z:\voasrv\HPCHEM1\MSVOA_X\Data\VX062022\
 Data File : VX029654.D
 Acq On : 21 Jun 2022 10:24
 Operator : JC/MD
 Sample : N3354-17
 Misc : 5.0mL/MSVOA_X/WATER
 ALS Vial : 49 Sample Multiplier: 1

Instrument :
 MSVOA_X
 ClientSampleId :
 MW-61

Quant Time: Jun 21 17:09:53 2022
 Quant Method : Z:\voasrv\HPCHEM1\MSVOA_X\Method\82X061822W.M
 Quant Title : SW846 8260
 QLast Update : Mon Jun 20 01:31:01 2022
 Response via : Initial Calibration

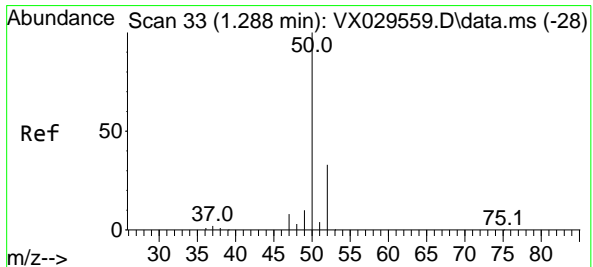
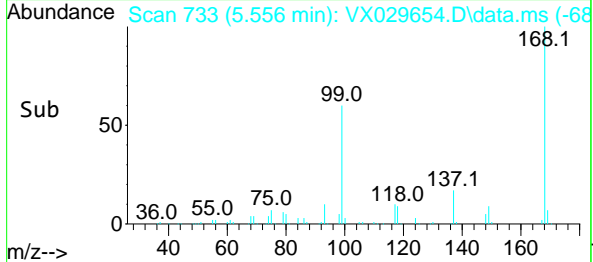
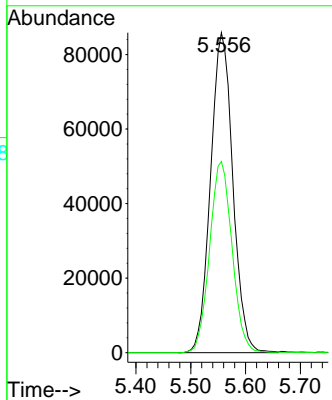
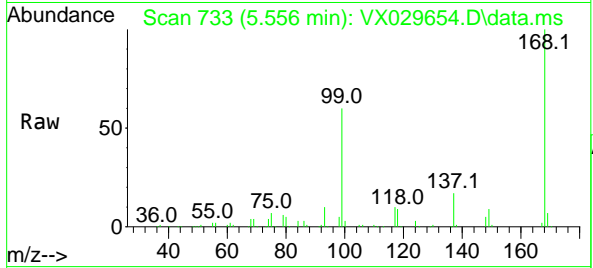




#1
 Pentafluorobenzene
 Concen: 50.000 ug/l
 RT: 5.556 min Scan# 71
 Delta R.T. -0.000 min
 Lab File: VX029654.D
 Acq: 21 Jun 2022 10:24

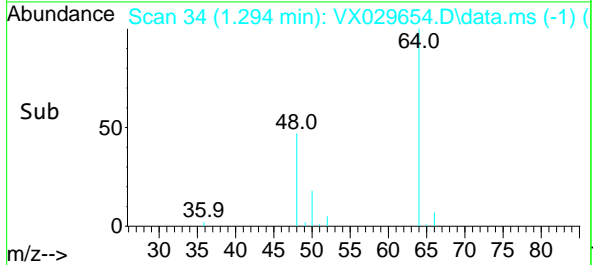
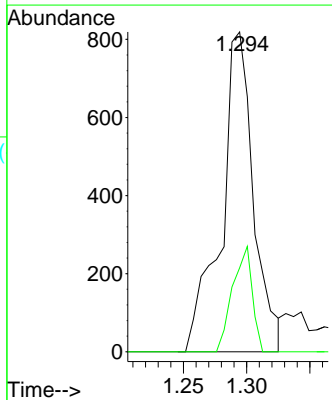
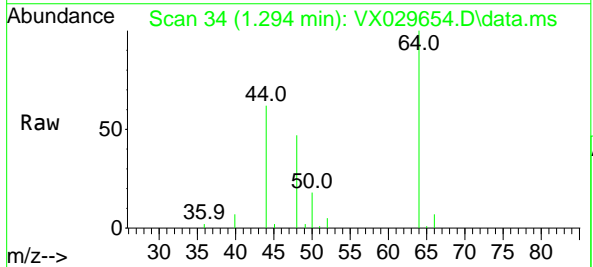
Instrument : MSVOA_X
 ClientSampleId : MW-61

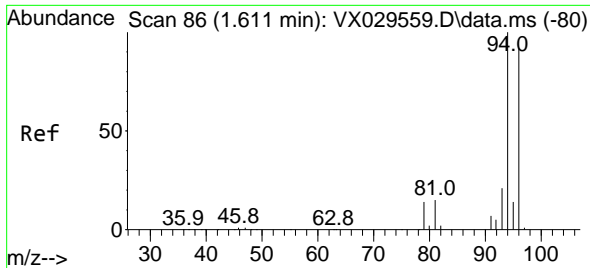
Tgt Ion:168 Resp: 242168
 Ion Ratio Lower Upper
 168 100
 99 59.8 41.7 62.5



#3
 Chloromethane
 Concen: 0.459 ug/l
 RT: 1.294 min Scan# 34
 Delta R.T. 0.006 min
 Lab File: VX029654.D
 Acq: 21 Jun 2022 10:24

Tgt Ion: 50 Resp: 1449
 Ion Ratio Lower Upper
 50 100
 52 26.3 26.4 39.6#

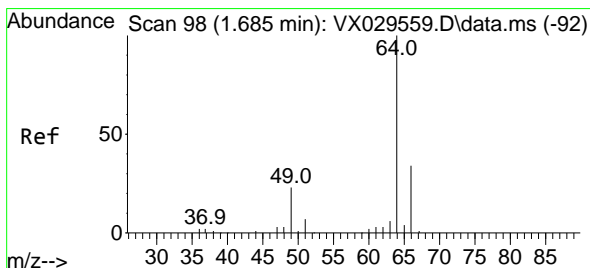
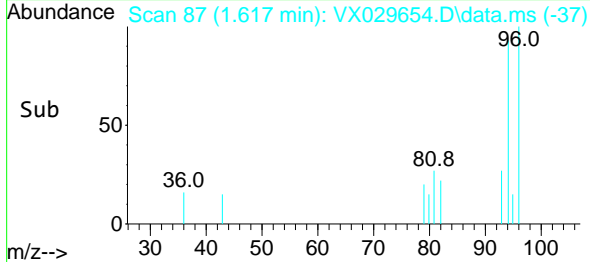
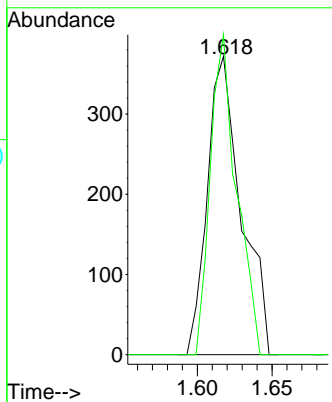
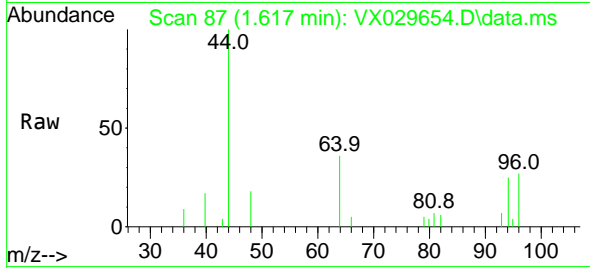




#5
 Bromomethane
 Concen: 0.396 ug/l
 RT: 1.617 min Scan# 81
 Delta R.T. 0.006 min
 Lab File: VX029654.D
 Acq: 21 Jun 2022 10:24

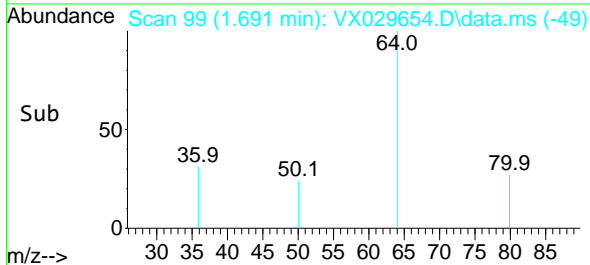
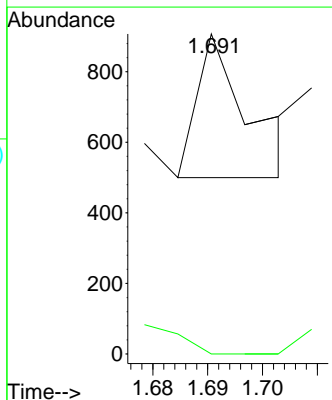
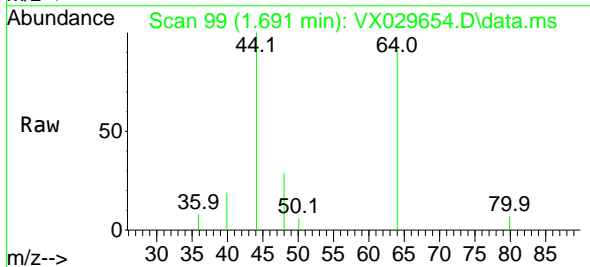
Instrument :
 MSVOA_X
 ClientSampleId :
 MW-61

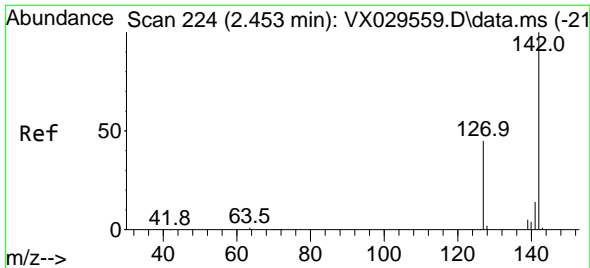
Tgt Ion: 94 Resp: 587
 Ion Ratio Lower Upper
 94 100
 96 107.3 75.3 112.9



#6
 Chloroethane
 Concen: 1.407 ug/l
 RT: 1.691 min Scan# 99
 Delta R.T. 0.006 min
 Lab File: VX029654.D
 Acq: 21 Jun 2022 10:24

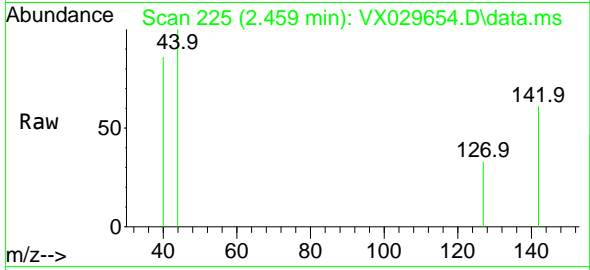
Tgt Ion: 64 Resp: 267
 Ion Ratio Lower Upper
 64 100
 66 0.0 25.3 37.9#



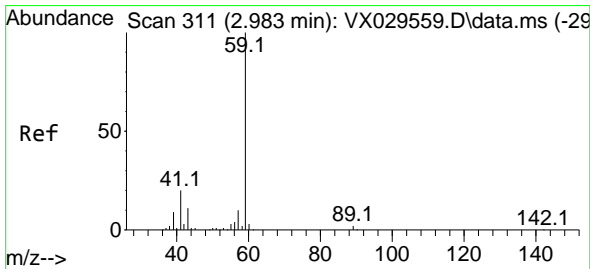
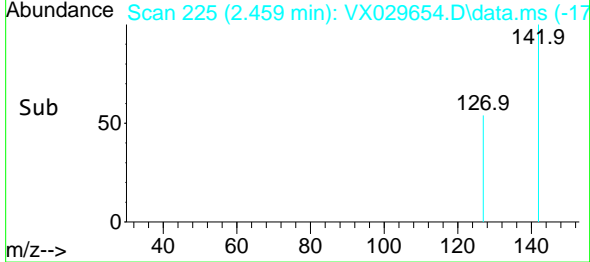
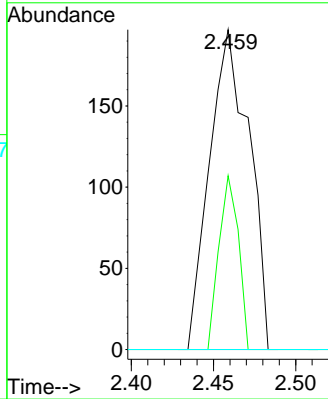


#10
 Methyl Iodide
 Concen: 3.125 ug/l
 RT: 2.459 min Scan# 21
 Delta R.T. 0.006 min
 Lab File: VX029654.D
 Acq: 21 Jun 2022 10:24

Instrument : MSVOA_X
 Client SampleId : MW-61

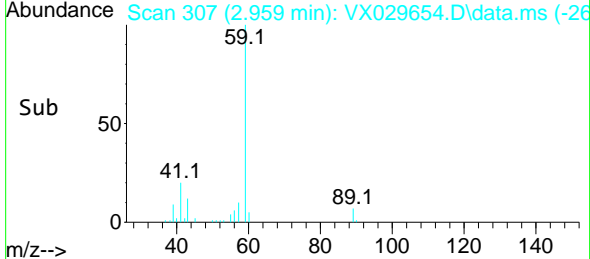
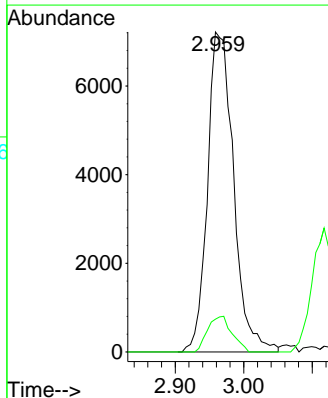
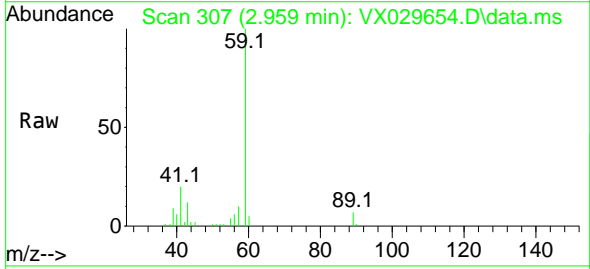


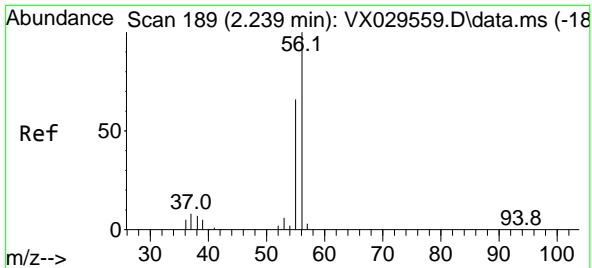
Tgt Ion: 142 Resp: 330
 Ion Ratio Lower Upper
 142 100
 127 26.7 33.9 50.9#
 141 0.0 11.4 17.2#



#11
 Tert butyl alcohol
 Concen: 18.749 ug/l
 RT: 2.959 min Scan# 307
 Delta R.T. -0.024 min
 Lab File: VX029654.D
 Acq: 21 Jun 2022 10:24

Tgt Ion: 59 Resp: 19077
 Ion Ratio Lower Upper
 59 100
 57 10.4 8.3 12.5

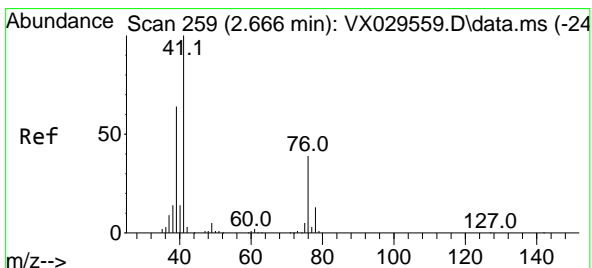
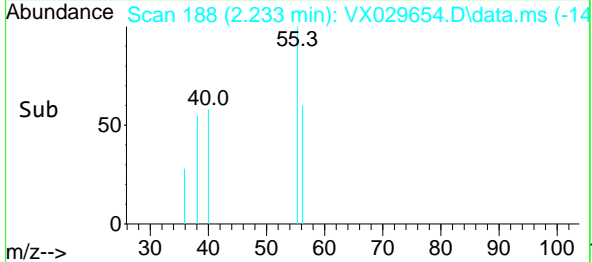
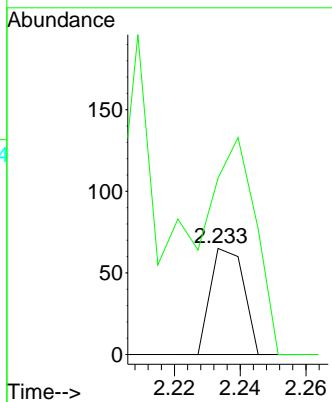
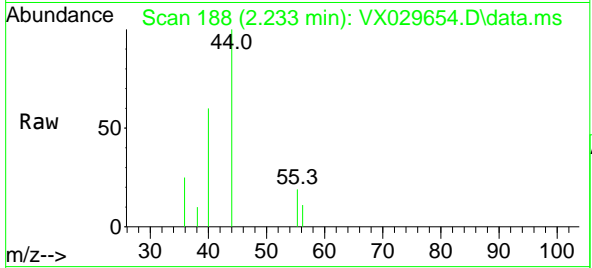




#13
 Acrolein
 Concen: 0.260 ug/l
 RT: 2.233 min Scan# 11
 Delta R.T. -0.006 min
 Lab File: VX029654.D
 Acq: 21 Jun 2022 10:24

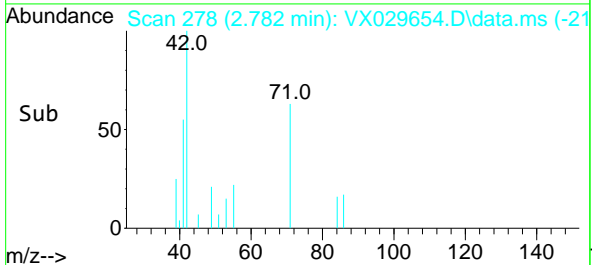
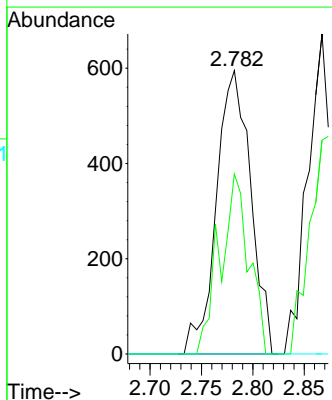
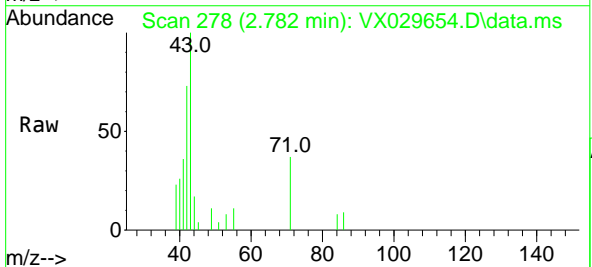
Instrument :
 MSVOA_X
 ClientSampleId :
 MW-61

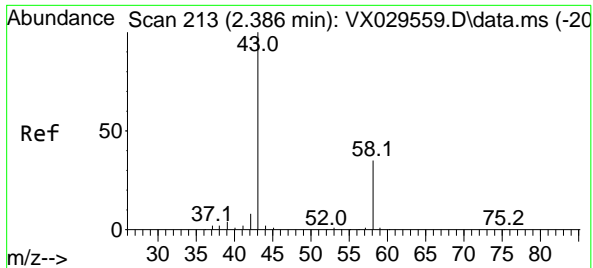
Tgt Ion: 56 Resp: 46
 Ion Ratio Lower Upper
 56 100
 55 252.2 55.0 82.6#



#14
 Allyl chloride
 Concen: 0.348 ug/l
 RT: 2.782 min Scan# 278
 Delta R.T. 0.116 min
 Lab File: VX029654.D
 Acq: 21 Jun 2022 10:24

Tgt Ion: 41 Resp: 1379
 Ion Ratio Lower Upper
 41 100
 39 53.7 50.4 75.6
 76 0.0 32.7 49.1#

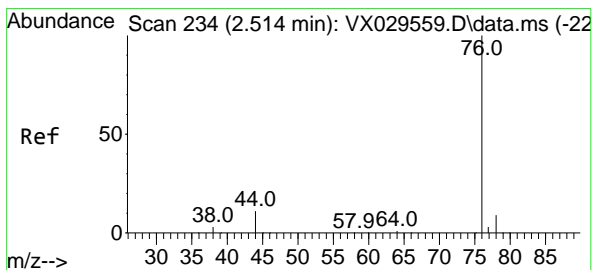
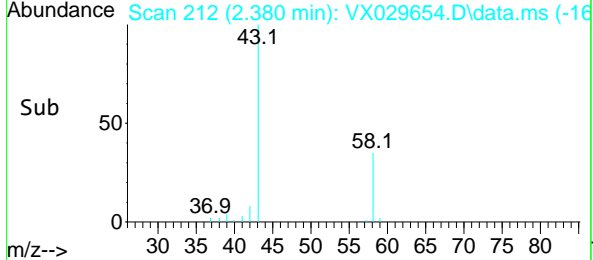
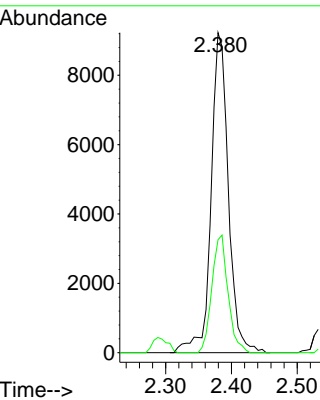
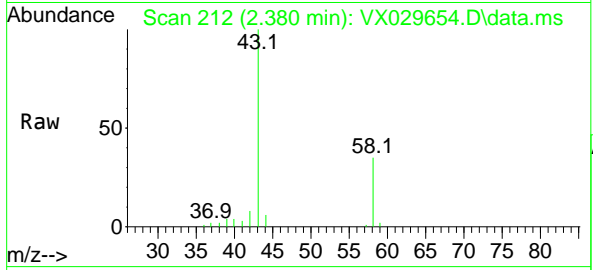




#16
 Acetone
 Concen: 13.202 ug/l
 RT: 2.380 min Scan# 213
 Delta R.T. -0.006 min
 Lab File: VX029654.D
 Acq: 21 Jun 2022 10:24

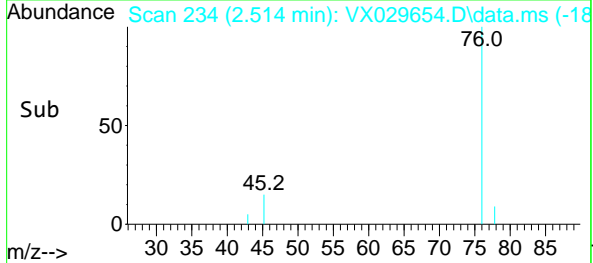
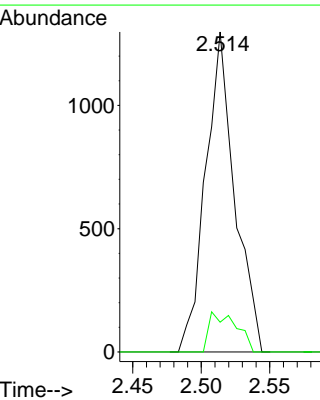
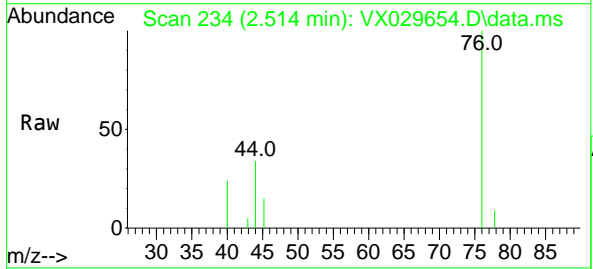
Instrument : MSVOA_X
 ClientSampleId : MW-61

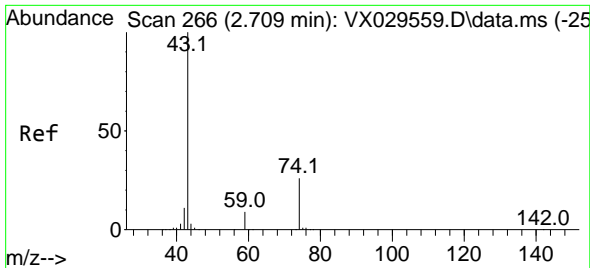
Tgt Ion: 43 Resp: 16869
 Ion Ratio Lower Upper
 43 100
 58 35.3 28.8 43.2



#17
 Carbon Disulfide
 Concen: 0.301 ug/l
 RT: 2.514 min Scan# 234
 Delta R.T. -0.000 min
 Lab File: VX029654.D
 Acq: 21 Jun 2022 10:24

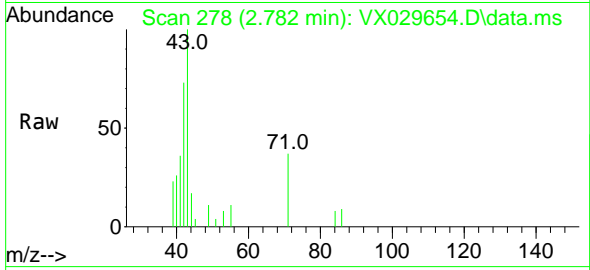
Tgt Ion: 76 Resp: 1916
 Ion Ratio Lower Upper
 76 100
 78 9.3 7.2 10.8



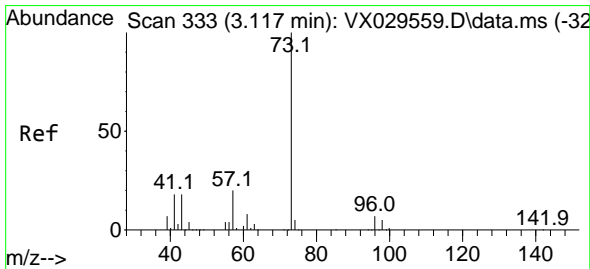
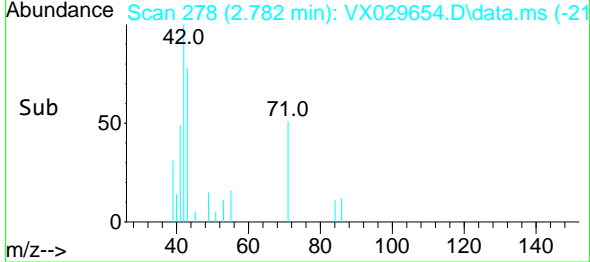
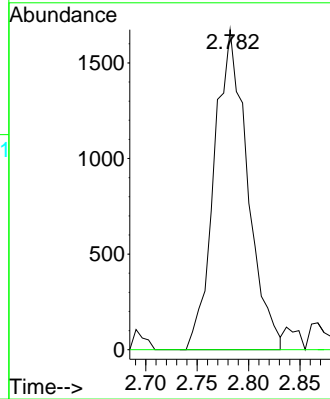


#18
 Methyl Acetate
 Concen: 1.116 ug/l
 RT: 2.782 min Scan# 21
 Delta R.T. 0.073 min
 Lab File: VX029654.D
 Acq: 21 Jun 2022 10:24

Instrument : MSVOA_X
 ClientSampleId : MW-61

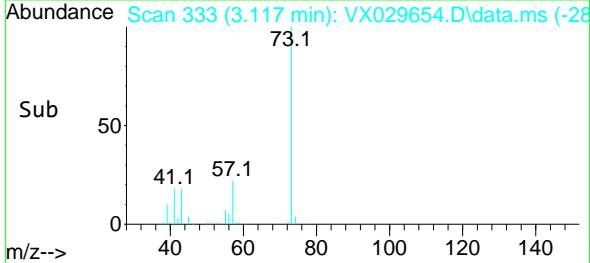
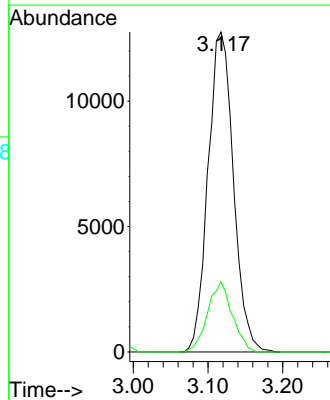
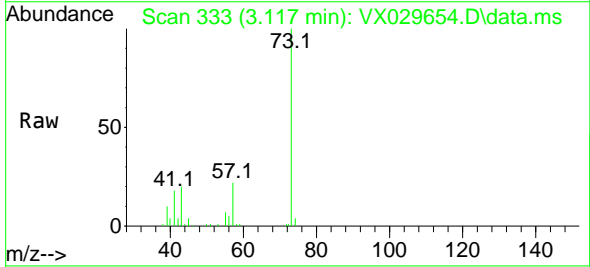


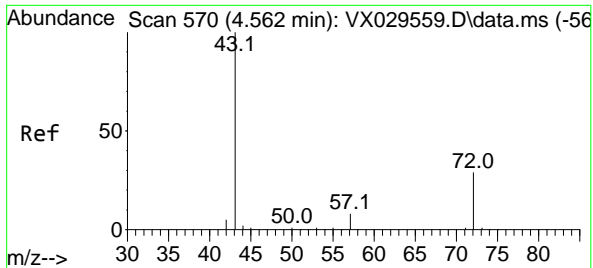
Tgt Ion: 43 Resp: 3770
 Ion Ratio Lower Upper
 43 100
 74 0.0 22.8 34.2#



#19
 Methyl tert-butyl Ether
 Concen: 3.535 ug/l
 RT: 3.117 min Scan# 333
 Delta R.T. 0.000 min
 Lab File: VX029654.D
 Acq: 21 Jun 2022 10:24

Tgt Ion: 73 Resp: 30107
 Ion Ratio Lower Upper
 73 100
 57 21.9 16.8 25.2

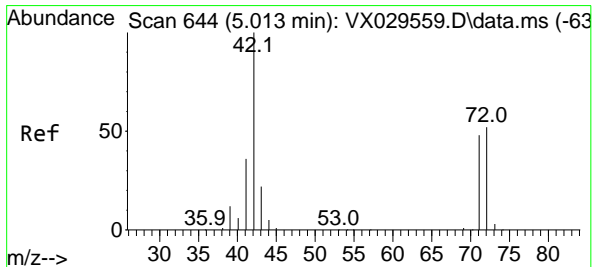
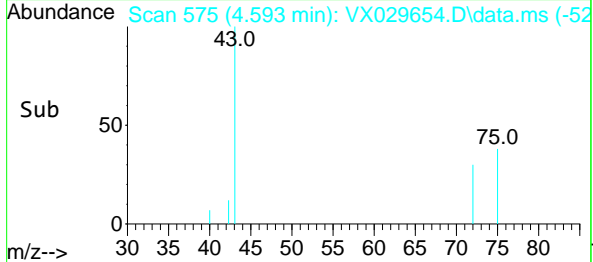
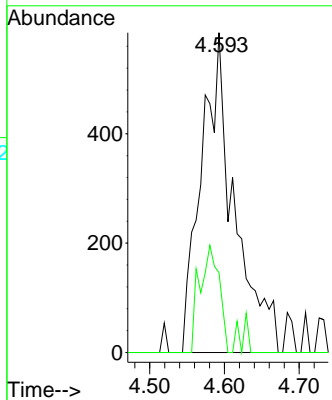
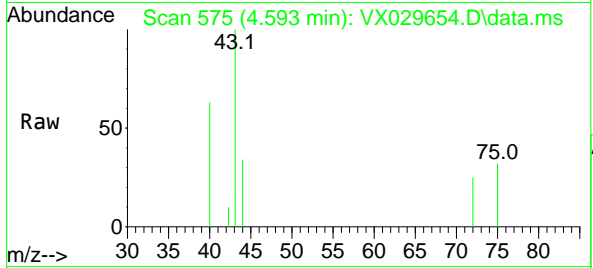




#25
 2-Butanone
 Concen: 0.893 ug/l
 RT: 4.593 min Scan# 51
 Delta R.T. 0.031 min
 Lab File: VX029654.D
 Acq: 21 Jun 2022 10:24

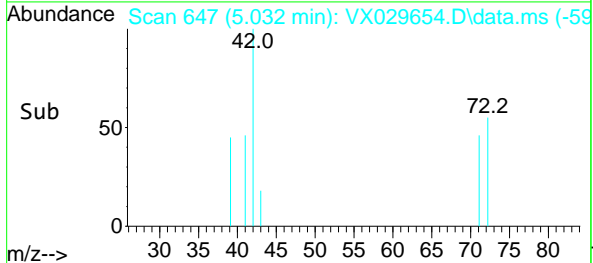
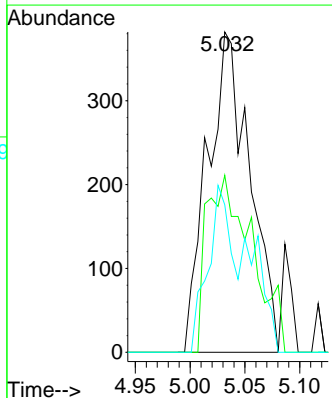
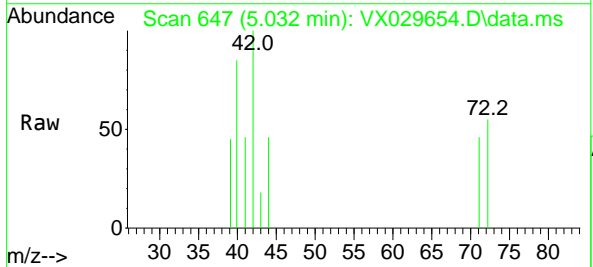
Instrument :
 MSVOA_X
 ClientSampleId :
 MW-61

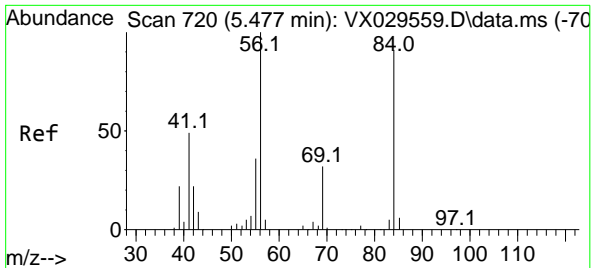
Tgt Ion: 43 Resp: 1804
 Ion Ratio Lower Upper
 43 100
 72 25.0 24.4 36.6



#29
 Tetrahydrofuran
 Concen: 0.758 ug/l
 RT: 5.032 min Scan# 647
 Delta R.T. 0.019 min
 Lab File: VX029654.D
 Acq: 21 Jun 2022 10:24

Tgt Ion: 42 Resp: 1020
 Ion Ratio Lower Upper
 42 100
 72 59.4 44.1 66.1
 71 30.2 40.5 60.7#



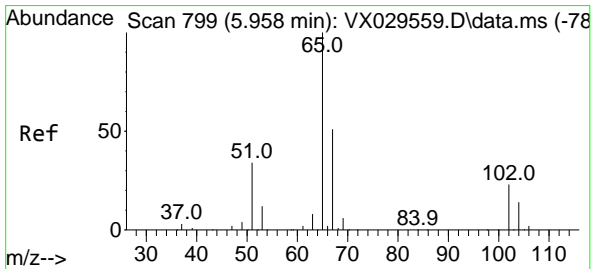
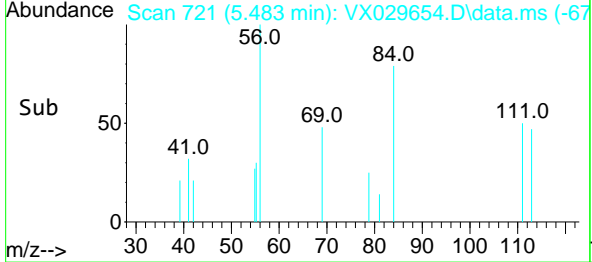
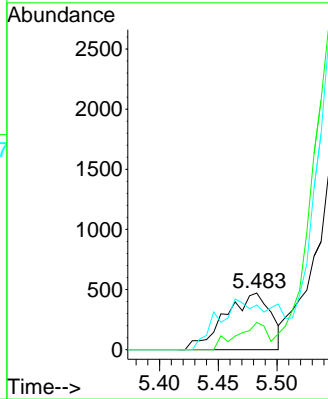
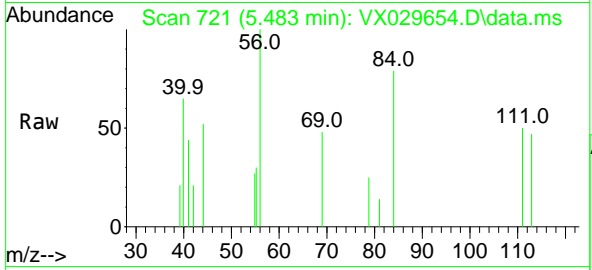


#31
 Cyclohexane
 Concen: 0.298 ug/l
 RT: 5.483 min Scan# 711
 Delta R.T. 0.006 min
 Lab File: VX029654.D
 Acq: 21 Jun 2022 10:24

Instrument :
 MSVOA_X
 ClientSampleId :
 MW-61

Tgt Ion: 56 Resp: 1281

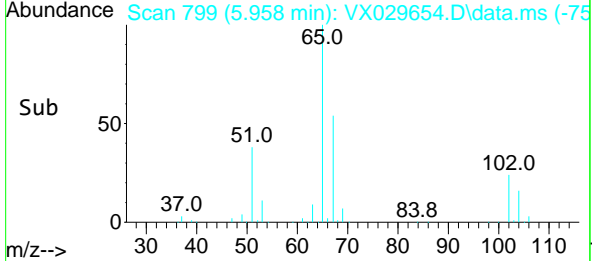
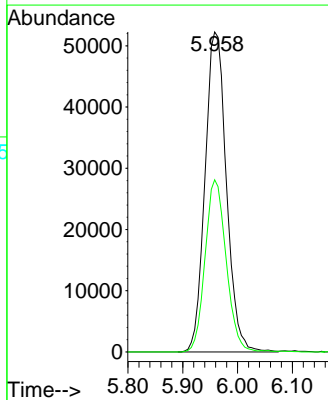
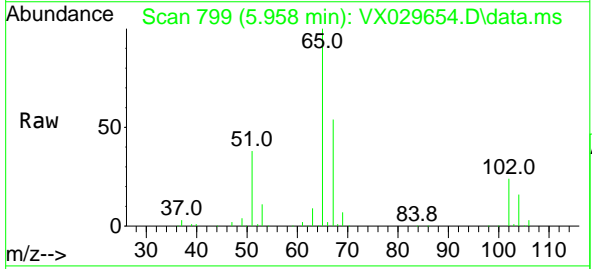
Ion	Ratio	Lower	Upper
56	100		
69	48.0	26.7	40.1#
84	78.8	77.2	115.8

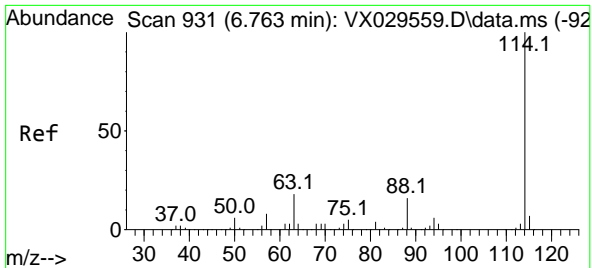


#33
 1,2-Dichloroethane-d4
 Concen: 44.111 ug/l
 RT: 5.958 min Scan# 799
 Delta R.T. 0.000 min
 Lab File: VX029654.D
 Acq: 21 Jun 2022 10:24

Tgt Ion: 65 Resp: 141403

Ion	Ratio	Lower	Upper
65	100		
67	52.8	0.0	107.4



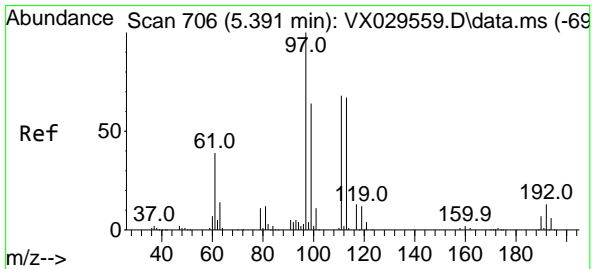
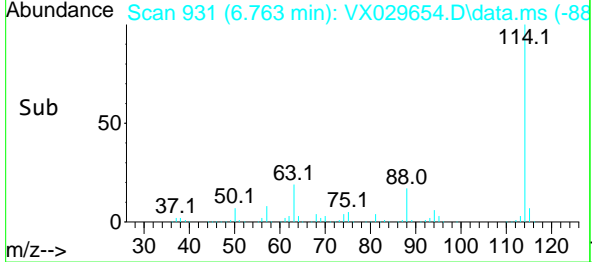
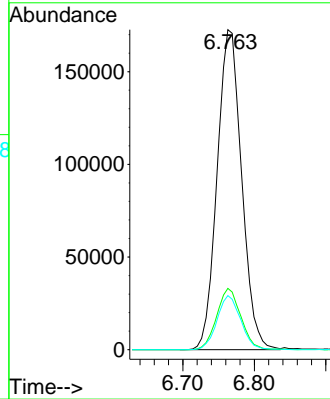
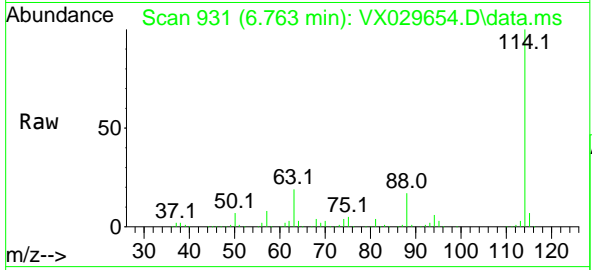


#34
 1,4-Difluorobenzene
 Concen: 50.000 ug/l
 RT: 6.763 min Scan# 911
 Delta R.T. -0.000 min
 Lab File: VX029654.D
 Acq: 21 Jun 2022 10:24

Instrument : MSVOA_X
 ClientSampleId : MW-61

Tgt Ion:114 Resp: 411056

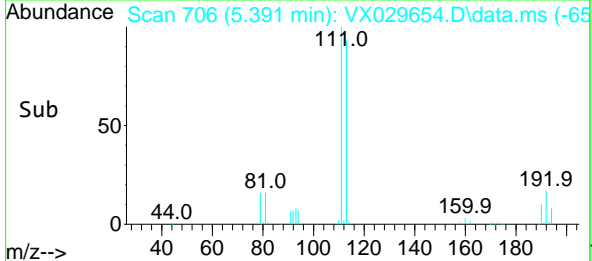
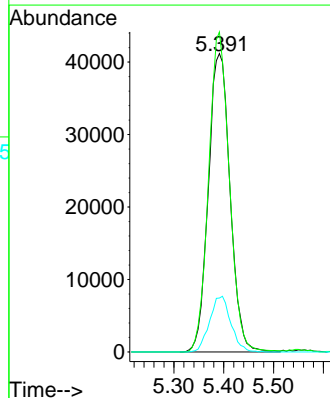
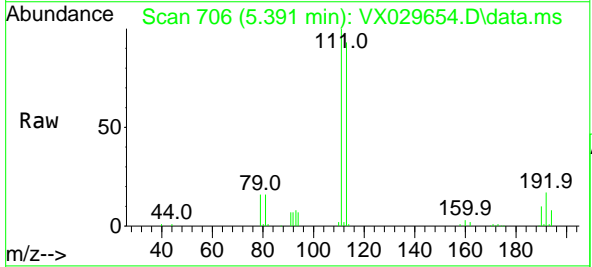
Ion	Ratio	Lower	Upper
114	100		
63	19.2	0.0	36.8
88	16.9	0.0	32.4

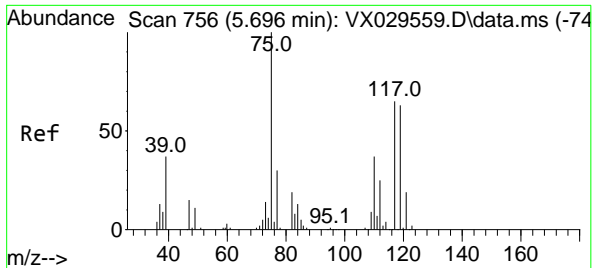


#35
 Dibromofluoromethane
 Concen: 46.519 ug/l
 RT: 5.391 min Scan# 706
 Delta R.T. 0.000 min
 Lab File: VX029654.D
 Acq: 21 Jun 2022 10:24

Tgt Ion:113 Resp: 124614

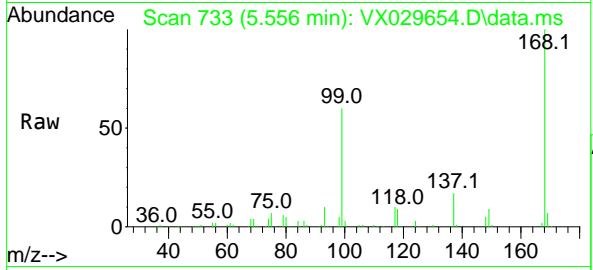
Ion	Ratio	Lower	Upper
113	100		
111	102.5	82.8	124.2
192	18.2	16.9	25.3



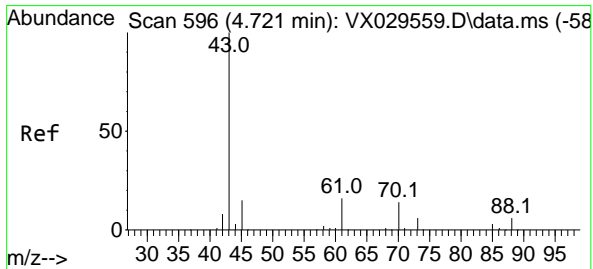
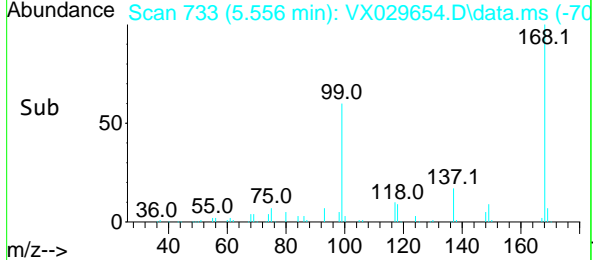
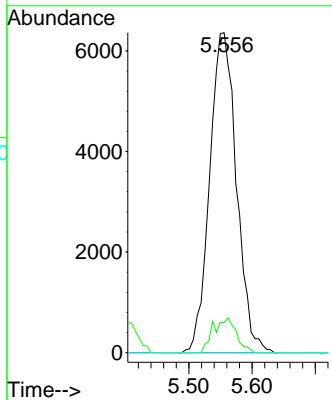


#36
 1,1-Dichloropropene
 Concen: 5.168 ug/l
 RT: 5.556 min Scan# 713
 Delta R.T. -0.140 min
 Lab File: VX029654.D
 Acq: 21 Jun 2022 10:24

Instrument : MSVOA_X
 ClientSampleId : MW-61

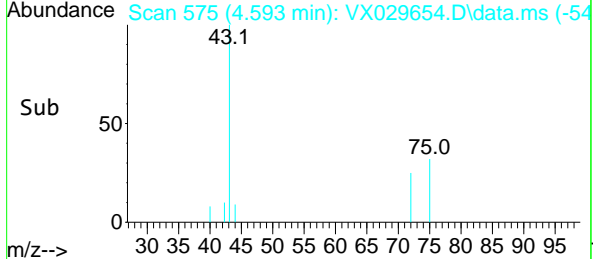
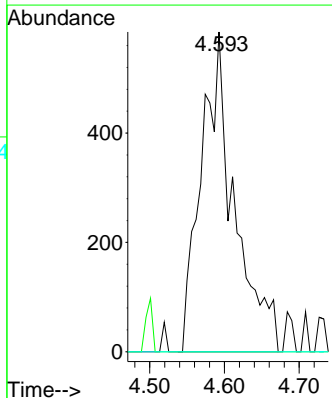
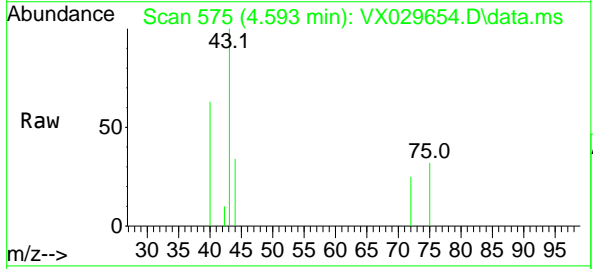


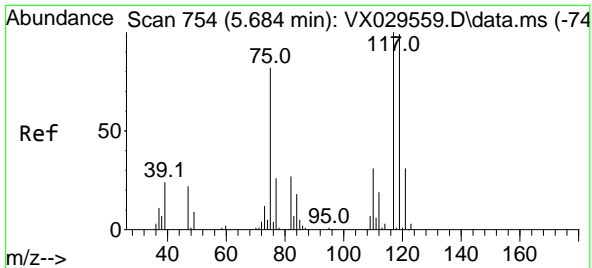
Tgt Ion: 75 Resp: 18737
 Ion Ratio Lower Upper
 75 100
 110 9.4 18.3 54.8#
 77 0.0 24.8 37.2#



#37
 Ethyl Acetate
 Concen: 0.485 ug/l
 RT: 4.593 min Scan# 575
 Delta R.T. -0.128 min
 Lab File: VX029654.D
 Acq: 21 Jun 2022 10:24

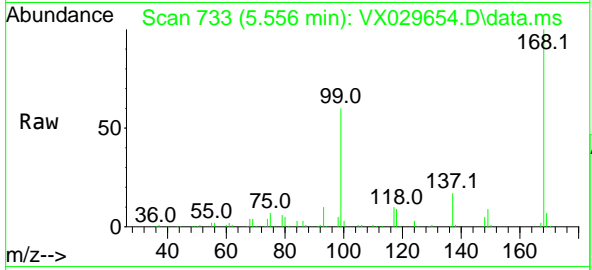
Tgt Ion: 43 Resp: 1804
 Ion Ratio Lower Upper
 43 100
 61 0.0 12.6 19.0#
 70 0.0 10.2 15.2#



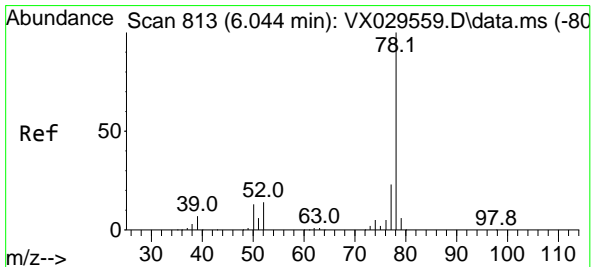
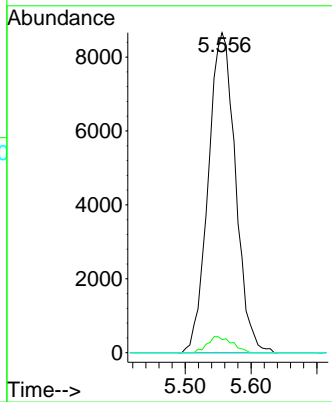
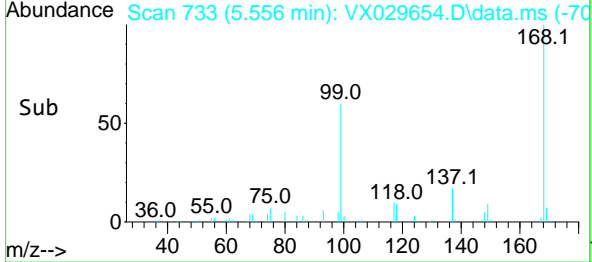


#38
 Carbon Tetrachloride
 Concen: 6.987 ug/l
 RT: 5.556 min Scan# 711
 Delta R.T. -0.128 min
 Lab File: VX029654.D
 Acq: 21 Jun 2022 10:24

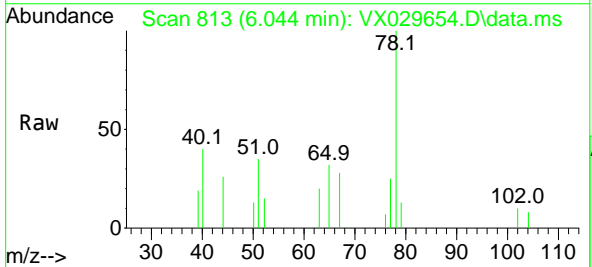
Instrument : MSVOA_X
 ClientSampleId : MW-61



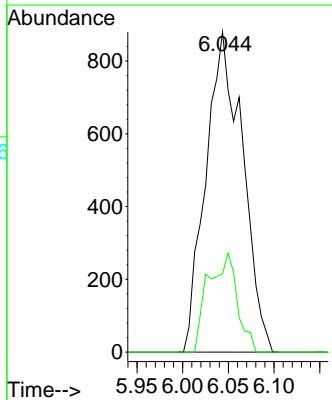
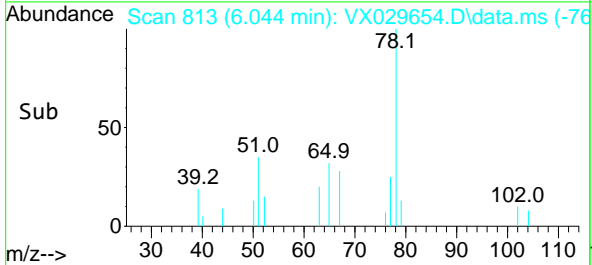
Tgt Ion: 117 Resp: 24912
 Ion Ratio Lower Upper
 117 100
 119 4.1 77.3 115.9#
 121 0.0 24.2 36.2#

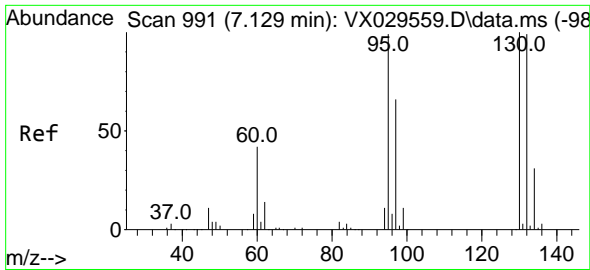


#40
 Benzene
 Concen: 0.229 ug/l
 RT: 6.044 min Scan# 813
 Delta R.T. -0.000 min
 Lab File: VX029654.D
 Acq: 21 Jun 2022 10:24



Tgt Ion: 78 Resp: 2457
 Ion Ratio Lower Upper
 78 100
 77 24.5 19.3 28.9

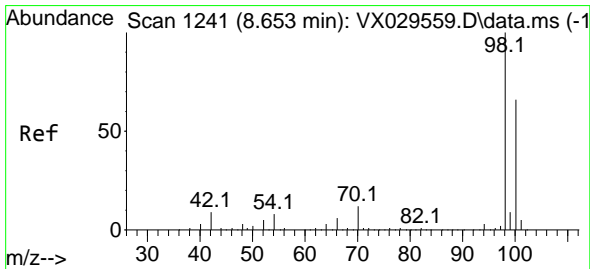
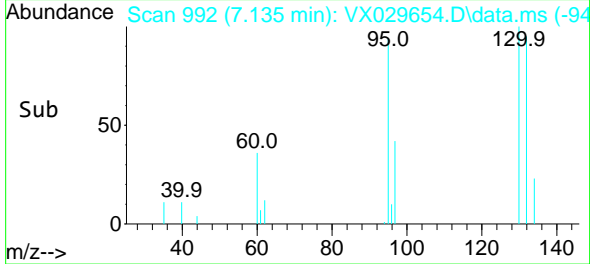
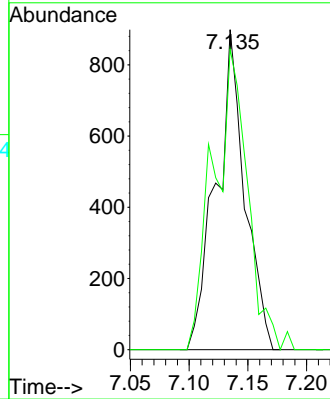
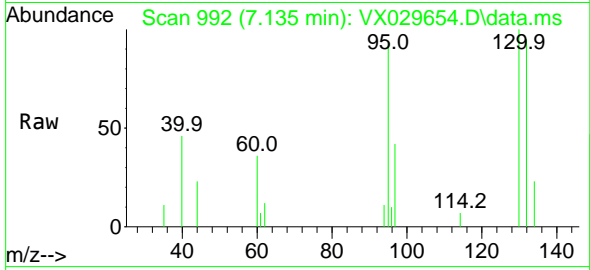




#44
 Trichloroethene
 Concen: Below Cal
 RT: 7.135 min Scan# 991
 Delta R.T. 0.006 min
 Lab File: VX029654.D
 Acq: 21 Jun 2022 10:24

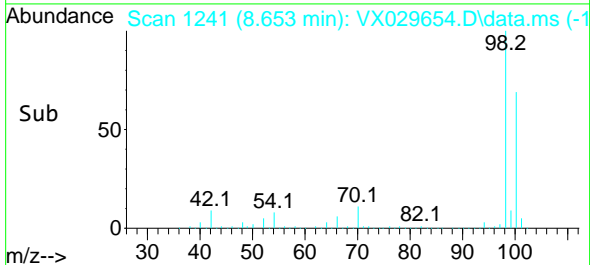
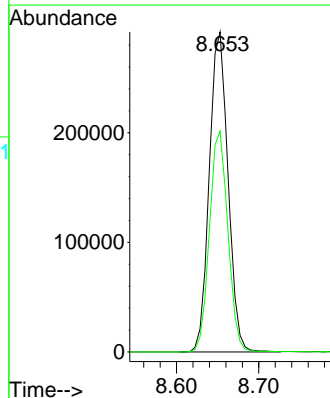
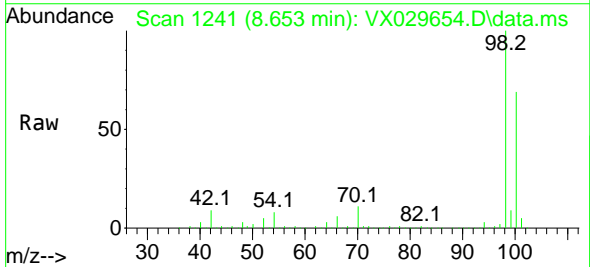
Instrument :
 MSVOA_X
 ClientSampleId :
 MW-61

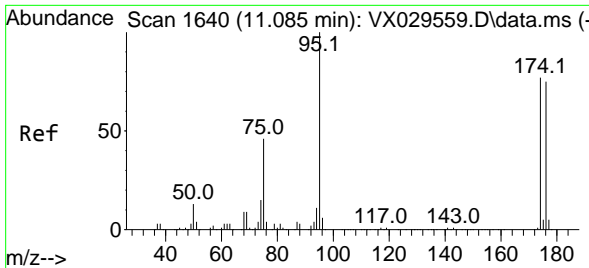
Tgt Ion:130 Resp: 1526
 Ion Ratio Lower Upper
 130 100
 95 93.9 0.0 188.8



#50
 Toluene-d8
 Concen: 47.150 ug/l
 RT: 8.653 min Scan# 1241
 Delta R.T. -0.000 min
 Lab File: VX029654.D
 Acq: 21 Jun 2022 10:24

Tgt Ion: 98 Resp: 461418
 Ion Ratio Lower Upper
 98 100
 100 68.1 52.6 78.8



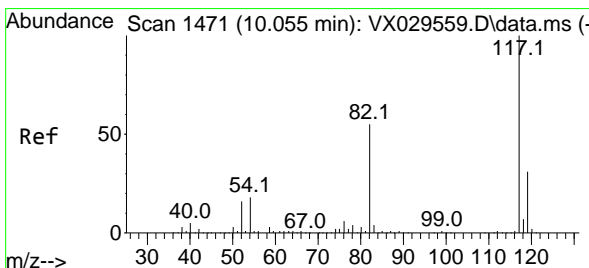
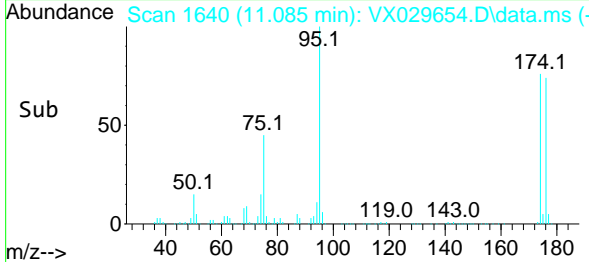
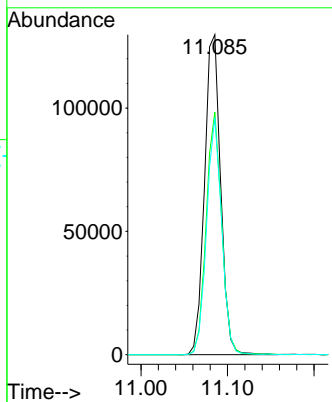
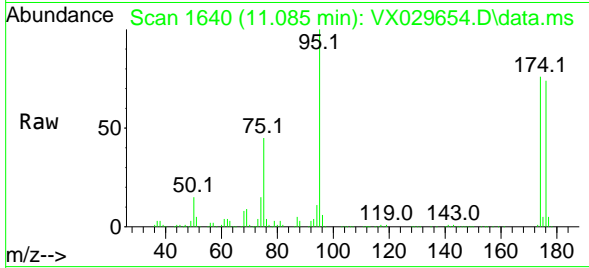


#62
 4-Bromofluorobenzene
 Concen: 45.378 ug/l
 RT: 11.085 min Scan# 11
 Delta R.T. 0.000 min
 Lab File: VX029654.D
 Acq: 21 Jun 2022 10:24

Instrument :
 MSVOA_X
 ClientSampleId :
 MW-61

Tgt Ion: 95 Resp: 167468

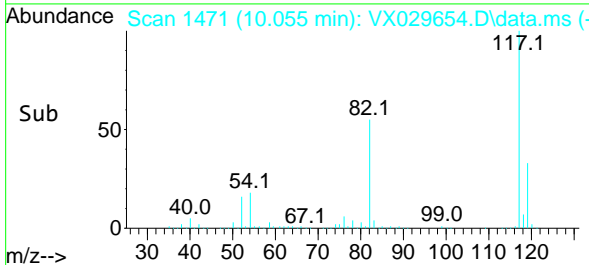
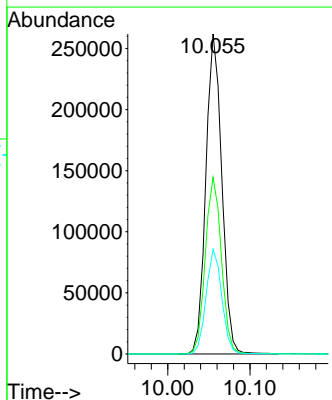
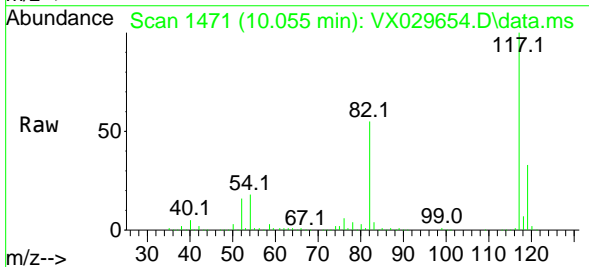
Ion	Ratio	Lower	Upper
95	100		
174	73.0	0.0	163.0
176	69.6	0.0	155.0

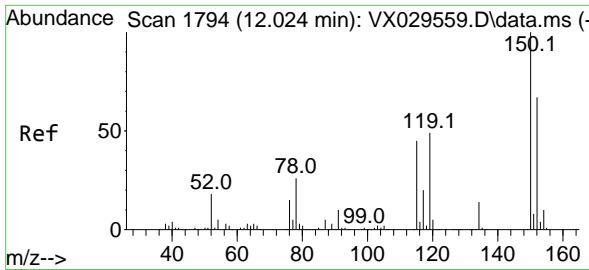


#63
 Chlorobenzene-d5
 Concen: 50.000 ug/l
 RT: 10.055 min Scan# 1471
 Delta R.T. -0.000 min
 Lab File: VX029654.D
 Acq: 21 Jun 2022 10:24

Tgt Ion: 117 Resp: 352987

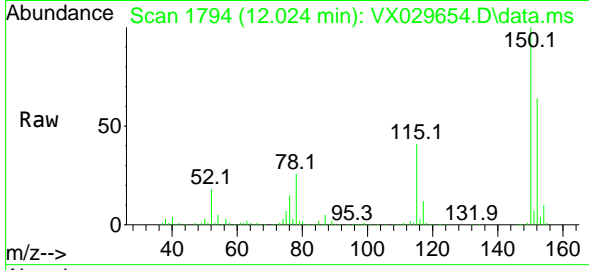
Ion	Ratio	Lower	Upper
117	100		
82	55.2	41.8	62.8
119	32.7	24.8	37.2



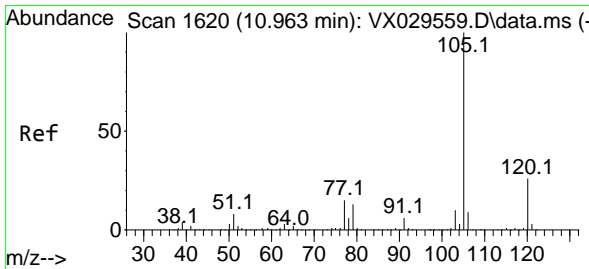
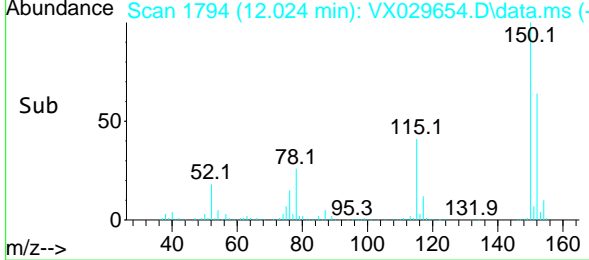
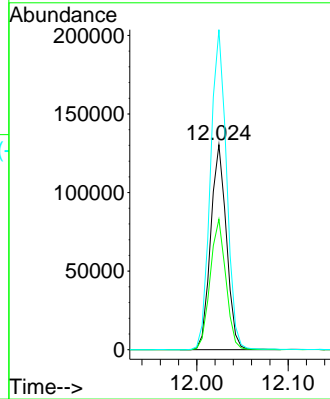


#72
 1,4-Dichlorobenzene-d4
 Concen: 50.000 ug/l
 RT: 12.024 min Scan# 11
 Delta R.T. -0.000 min
 Lab File: VX029654.D
 Acq: 21 Jun 2022 10:24

Instrument :
 MSVOA_X
 ClientSampleId :
 MW-61

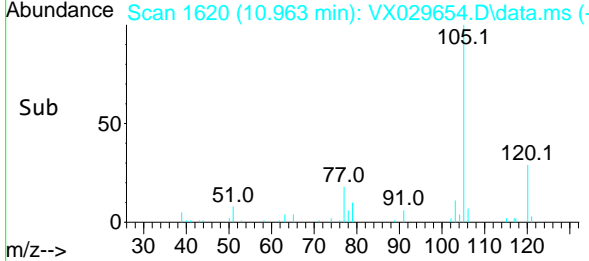
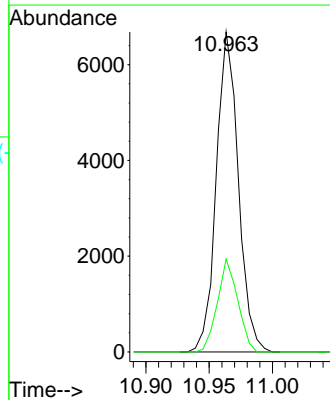
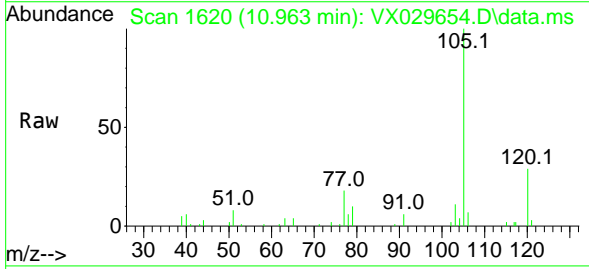


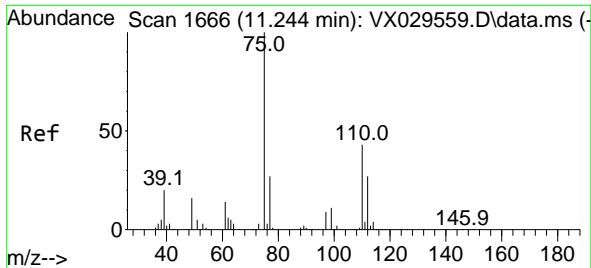
Tgt Ion:152 Resp: 155991
 Ion Ratio Lower Upper
 152 100
 115 63.4 37.5 112.7
 150 159.5 0.0 338.2



#73
 Isopropylbenzene
 Concen: 0.691 ug/l
 RT: 10.963 min Scan# 1620
 Delta R.T. 0.000 min
 Lab File: VX029654.D
 Acq: 21 Jun 2022 10:24

Tgt Ion:105 Resp: 8082
 Ion Ratio Lower Upper
 105 100
 120 26.7 13.5 40.5

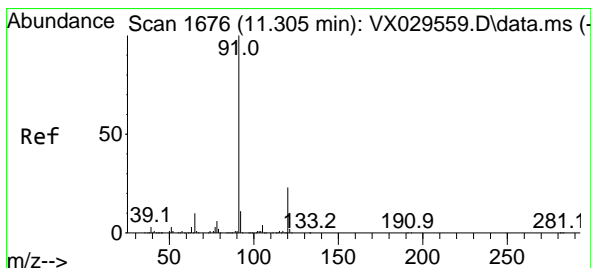
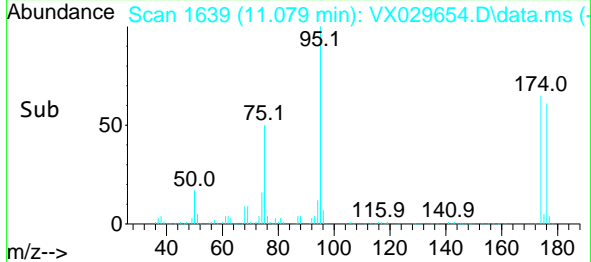
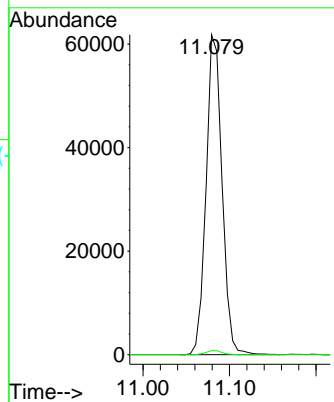
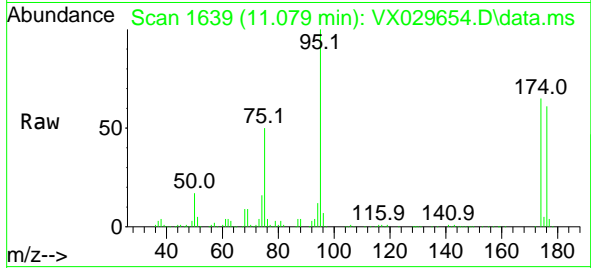




#76
 1,2,3-Trichloropropane
 Concen: 23.265 ug/l
 RT: 11.079 min Scan# 1639
 Delta R.T. -0.165 min
 Lab File: VX029654.D
 Acq: 21 Jun 2022 10:24

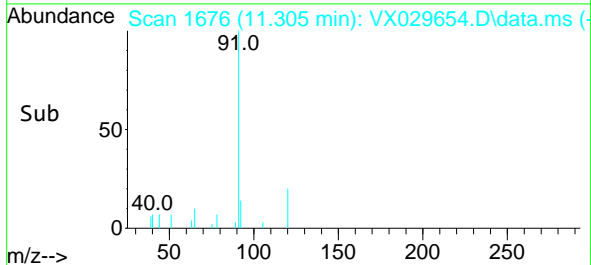
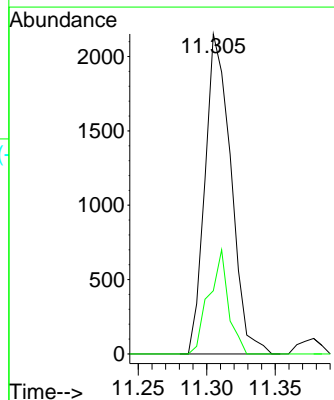
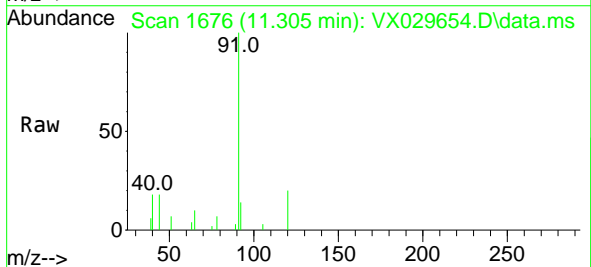
Instrument : MSVOA_X
 ClientSampleId : MW-61

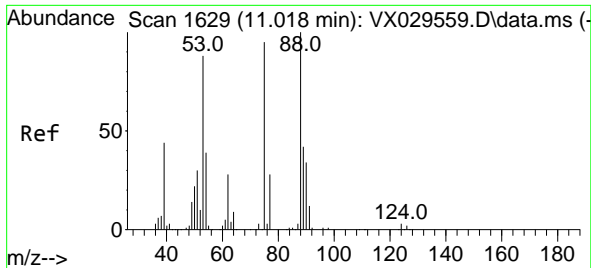
Tgt Ion: 75 Resp: 79062
 Ion Ratio Lower Upper
 75 100
 77 1.3 19.4 58.2#



#78
 n-propylbenzene
 Concen: 0.215 ug/l
 RT: 11.305 min Scan# 1676
 Delta R.T. -0.000 min
 Lab File: VX029654.D
 Acq: 21 Jun 2022 10:24

Tgt Ion: 91 Resp: 2829
 Ion Ratio Lower Upper
 91 100
 120 24.4 11.6 34.8

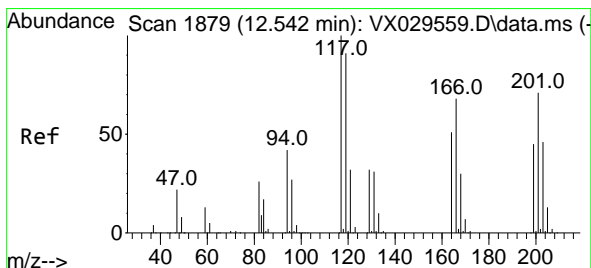
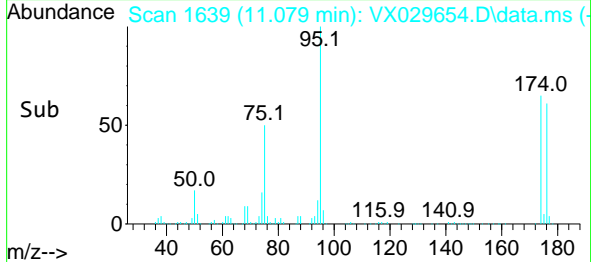
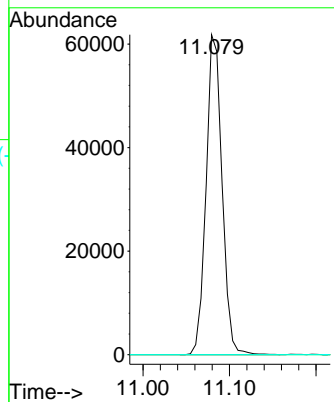
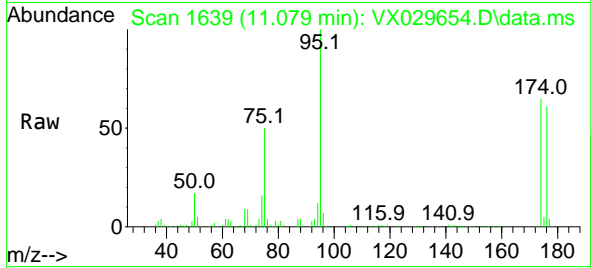




#81
 trans-1,4-Dichloro-2-butene
 Concen: 77.398 ug/l
 RT: 11.079 min Scan# 1
 Delta R.T. 0.061 min
 Lab File: VX029654.D
 Acq: 21 Jun 2022 10:24

Instrument :
 MSVOA_X
 ClientSampleId :
 MW-61

Tgt Ion: 75 Resp: 79062
 Ion Ratio Lower Upper
 75 100
 53 0.0 69.0 103.4#
 89 0.0 37.0 55.6#



#90
 Hexachloroethane
 Concen: 0.390 ug/l
 RT: 12.646 min Scan# 1896
 Delta R.T. 0.104 min
 Lab File: VX029654.D
 Acq: 21 Jun 2022 10:24

Tgt Ion: 117 Resp: 556
 Ion Ratio Lower Upper
 117 100
 201 0.0 39.5 118.5#

