

Data Path : Z:\voasrv\HPCHEM1\MSVOA_X\Data\VX062022\
 Data File : VX029643.D
 Acq On : 21 Jun 2022 06:09
 Operator : JC/MD
 Sample : N3354-06
 Misc : 5.0mL/MSVOA_X/WATER
 ALS Vial : 38 Sample Multiplier: 1

Instrument :
 MSVOA_X
 ClientSampleId :
 MW-50D

Integration Parameters: RTEINT.P

Integrator: RTE
 Smoothing : ON Filtering: 5
 Sampling : 1 Min Area: 3 % of largest Peak
 Start Thrs: 0.2 Max Peaks: 100
 Stop Thrs : 0 Peak Location: TOP

If leading or trailing edge < 100 prefer < Baseline drop else tangent >
 Peak separation: 5

Method : Z:\voasrv\HPCHEM1\MSVOA_X\Method\82X061822W.M
 Title : SW846 8260

Signal : TIC: VX029643.D\data.ms

peak #	R.T. min	first scan	max scan	last scan	PK TY	peak height	corr. area	corr. % max.	% of total
1	1.282	26	32	45	rBV3	12128	36295	2.78%	0.498%
2	3.117	324	333	345	rBV	98791	232796	17.85%	3.197%
3	5.391	694	706	719	rBV	148551	434820	33.33%	5.971%
4	5.556	722	733	749	rVB	276022	780219	59.81%	10.714%
5	5.958	787	799	814	rBV	163657	427104	32.74%	5.865%
6	6.763	920	931	945	rBV	417097	997711	76.49%	13.701%
7	8.653	1233	1241	1250	rBV	822053	1304428	100.00%	17.913%
8	8.958	1281	1291	1300	rBV	55413	86245	6.61%	1.184%
9	9.049	1300	1306	1313	rBV	57350	88390	6.78%	1.214%
10	10.055	1465	1471	1484	rBV	826783	1108817	85.00%	15.227%
11	11.079	1634	1639	1652	rBV	615778	804515	61.68%	11.048%
12	12.024	1788	1794	1804	rBV	804777	980812	75.19%	13.469%

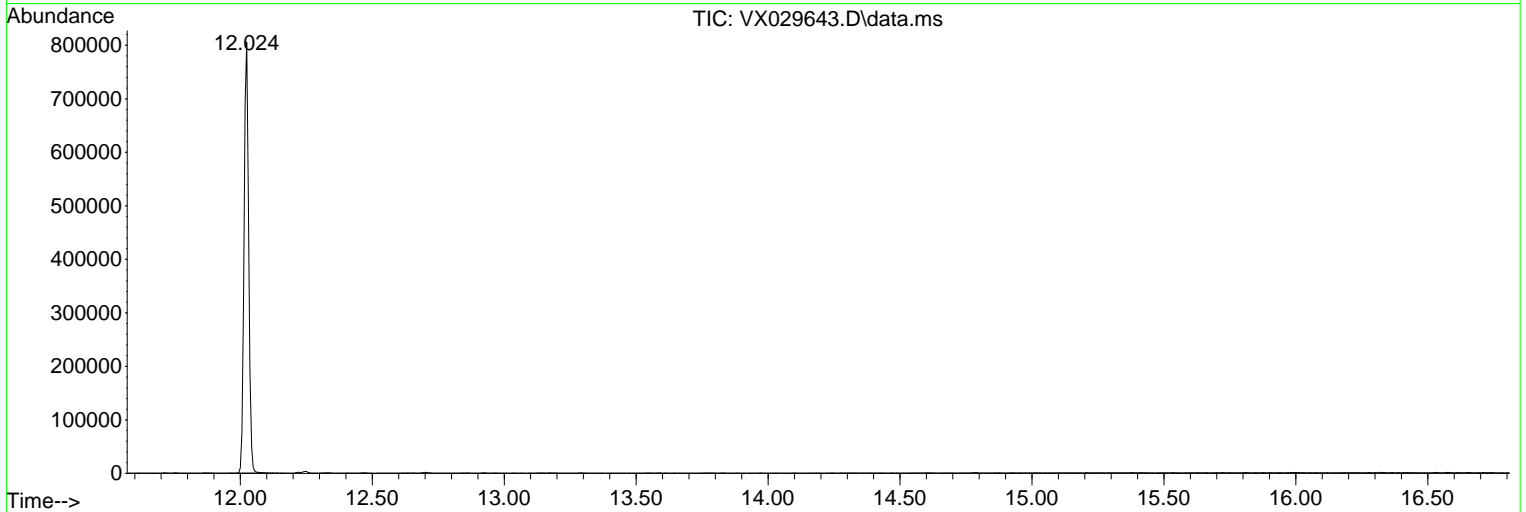
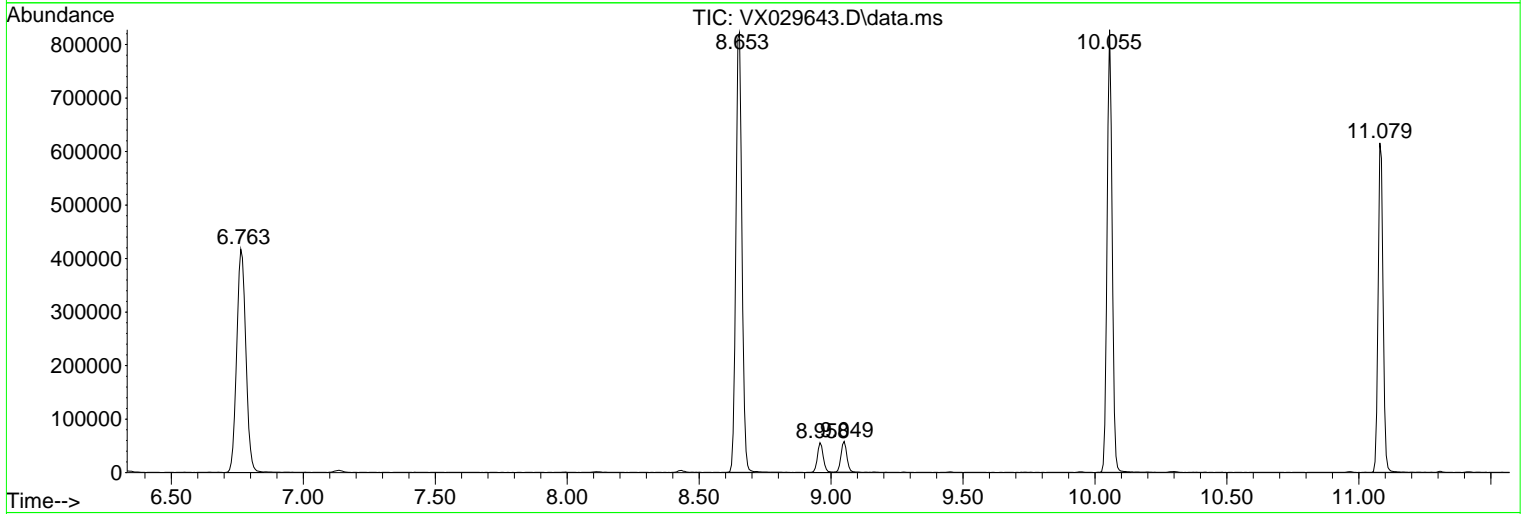
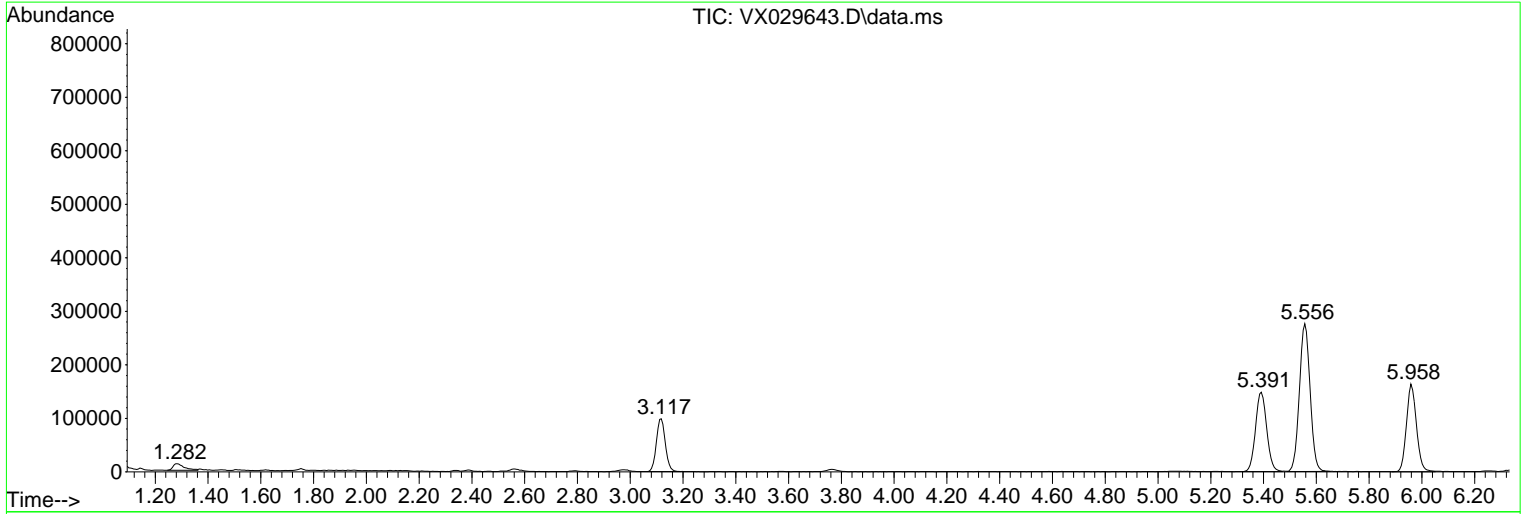
Sum of corrected areas: 7282152

Data Path : Z:\voasrv\HPCHEM1\MSVOA_X\Data\VX062022\
 Data File : VX029643.D
 Acq On : 21 Jun 2022 06:09
 Operator : JC/MD
 Sample : N3354-06
 Misc : 5.0mL/MSVOA_X/WATER
 ALS Vial : 38 Sample Multiplier: 1

Instrument :
 MSVOA_X
 ClientSampleId :
 MW-50D

Quant Method : Z:\voasrv\HPCHEM1\MSVOA_X\Method\82X061822W.M
 Quant Title : SW846 8260

TIC Library : C:\Database\NIST20.L
 TIC Integration Parameters: LSCINT.P



Library Search Compound Report

Data Path : Z:\voasrv\HPCHEM1\MSVOA_X\Data\VX062022\
Data File : VX029643.D
Acq On : 21 Jun 2022 06:09
Operator : JC/MD
Sample : N3354-06
Misc : 5.0mL/MSVOA_X/WATER
ALS Vial : 38 Sample Multiplier: 1

Instrument :
MSVOA_X
ClientSampleId :
MW-50D

Quant Method : Z:\voasrv\HPCHEM1\MSVOA_X\Method\82X061822W.M
Quant Title : SW846 8260

TIC Library : C:\Database\NIST20.L
TIC Integration Parameters: LSCINT.P

No Library Search Compounds Detected

Data Path : Z:\voasrv\HPCHEM1\MSVOA_X\Data\VX062022\
Data File : VX029643.D
Acq On : 21 Jun 2022 06:09
Operator : JC/MD
Sample : N3354-06
Misc : 5.0mL/MSVOA_X/WATER
ALS Vial : 38 Sample Multiplier: 1

Instrument :
MSVOA_X
ClientSampleId :
MW-50D

Quant Method : Z:\voasrv\HPCHEM1\MSVOA_X\Method\82X061822W.M
Quant Title : SW846 8260

TIC Library : C:\Database\NIST20.L
TIC Integration Parameters: LSCINT.P

TIC Top Hit name	RT	EstConc	Units	Response	--Internal Standard--		
					#	RT	Resp Conc
