

Data Path : Z:\voasrv\HPCHEM1\MSVOA_X\Data\VX062022\
 Data File : VX029653.D
 Acq On : 21 Jun 2022 10:01
 Operator : JC/MD
 Sample : N3354-16
 Misc : 5.0mL/MSVOA_X/WATER
 ALS Vial : 48 Sample Multiplier: 1

Instrument :
 MSVOA_X
 ClientSampleId :
 MW-60

Integration Parameters: RTEINT.P

Integrator: RTE
 Smoothing : ON Filtering: 5
 Sampling : 1 Min Area: 3 % of largest Peak
 Start Thrs: 0.2 Max Peaks: 100
 Stop Thrs : 0 Peak Location: TOP

If leading or trailing edge < 100 prefer < Baseline drop else tangent >
 Peak separation: 5

Method : Z:\voasrv\HPCHEM1\MSVOA_X\Method\82X061822W.M
 Title : SW846 8260

Signal : TIC: VX029653.D\data.ms

peak #	R.T. min	first scan	max scan	last scan	PK TY	peak height	corr. area	corr. % max.	% of total
1	1.270	26	30	43	rBV4	13116	36160	2.94%	0.516%
2	2.544	228	239	248	rBV2	9084	21763	1.77%	0.310%
3	2.782	268	278	288	rBV	12637	28145	2.29%	0.401%
4	2.959	298	307	318	rBV2	20652	50559	4.11%	0.721%
5	3.117	322	333	349	rVB	66742	158065	12.84%	2.255%
6	5.391	694	706	718	rBV	140779	409260	33.24%	5.837%
7	5.556	723	733	750	rVB	259323	735586	59.74%	10.492%
8	5.958	787	799	809	rBV	152675	403986	32.81%	5.762%
9	6.044	811	813	823	rVB3	7765	14963	1.22%	0.213%
10	6.251	835	847	858	rVB2	18683	57616	4.68%	0.822%
11	6.763	921	931	944	rBV	393206	935405	75.96%	13.342%
12	7.988	1122	1132	1139	rBV	17710	36061	2.93%	0.514%
13	8.110	1142	1152	1162	rBV3	22988	48767	3.96%	0.696%
14	8.653	1229	1241	1253	rBV	772556	1231375	100.00%	17.563%
15	8.958	1281	1291	1300	rVB	19696	32427	2.63%	0.463%
16	9.049	1300	1306	1313	rBV2	19958	32173	2.61%	0.459%
17	10.055	1465	1471	1483	rBV	783110	1056718	85.82%	15.072%
18	11.079	1634	1639	1652	rBV	591432	770143	62.54%	10.985%
19	12.024	1788	1794	1803	rBV	775987	951847	77.30%	13.576%

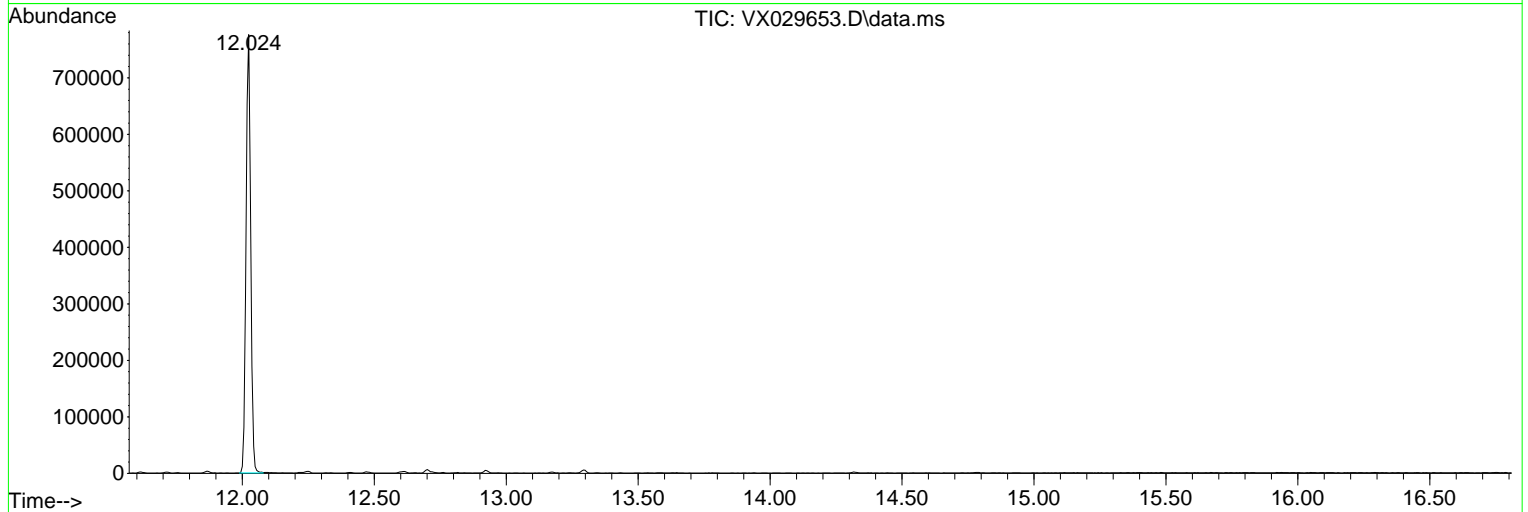
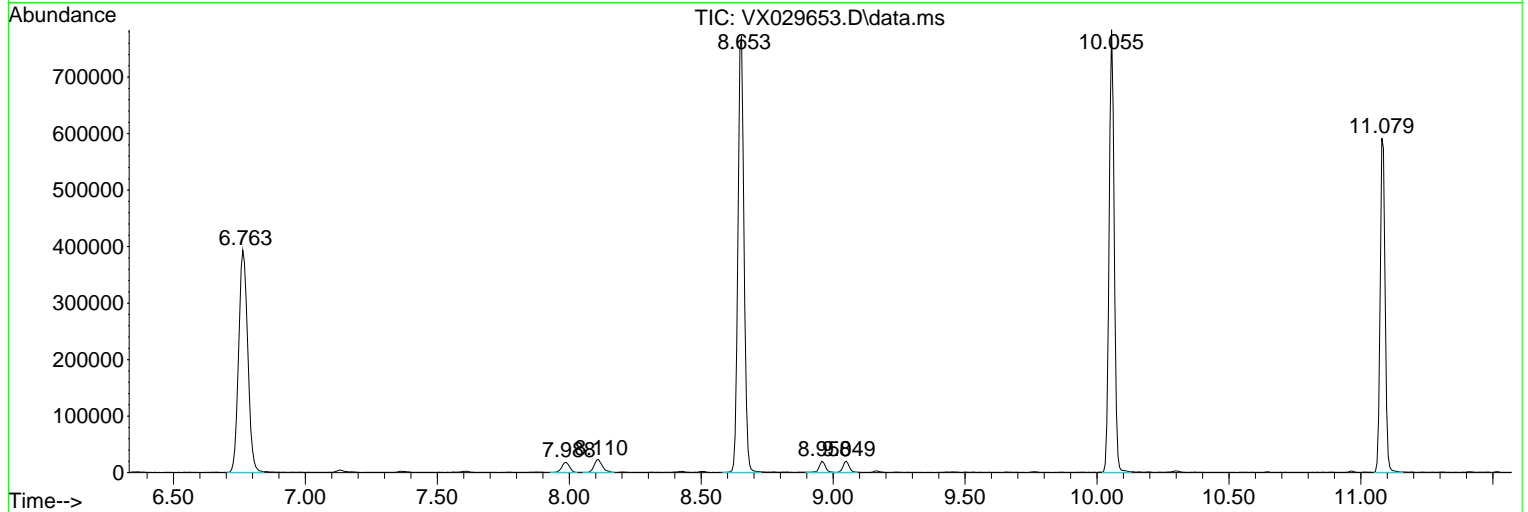
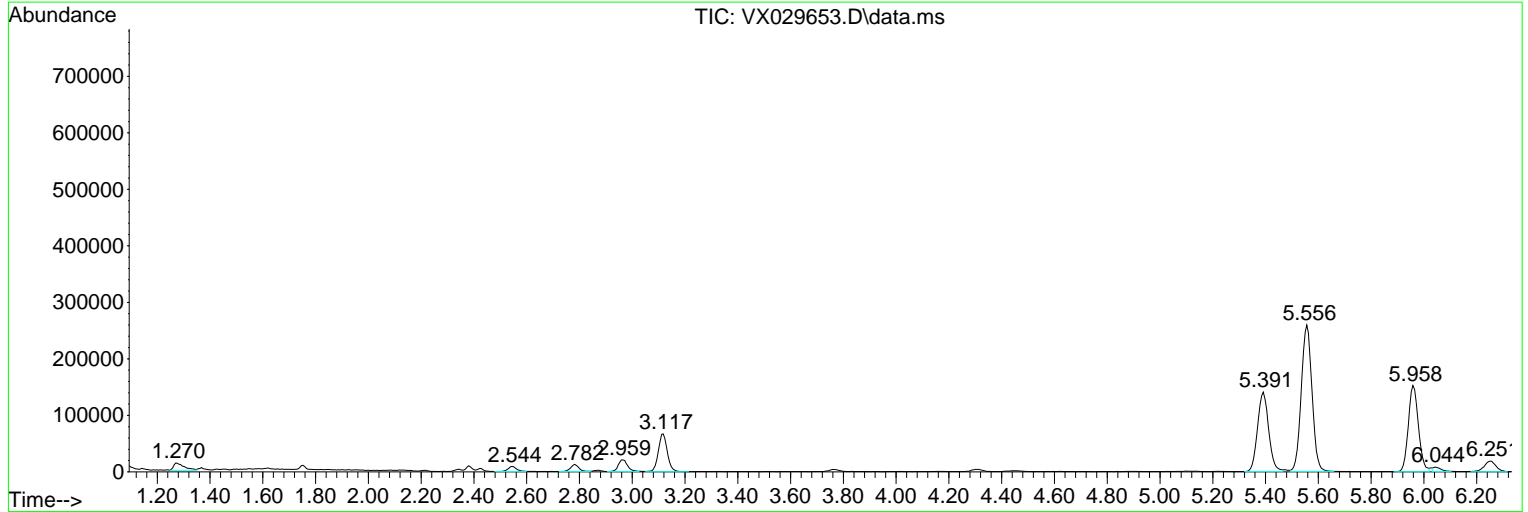
Sum of corrected areas: 7011019

Data Path : Z:\voasrv\HPCHEM1\MSVOA_X\Data\VX062022\
 Data File : VX029653.D
 Acq On : 21 Jun 2022 10:01
 Operator : JC/MD
 Sample : N3354-16
 Misc : 5.0mL/MSVOA_X/WATER
 ALS Vial : 48 Sample Multiplier: 1

Instrument :
 MSVOA_X
 ClientSampleId :
 MW-60

Quant Method : Z:\voasrv\HPCHEM1\MSVOA_X\Method\82X061822W.M
 Quant Title : SW846 8260

TIC Library : C:\Database\NIST20.L
 TIC Integration Parameters: LSCINT.P



Data Path : Z:\voasrv\HPCHEM1\MSVOA_X\Data\VX062022\
Data File : VX029653.D
Acq On : 21 Jun 2022 10:01
Operator : JC/MD
Sample : N3354-16
Misc : 5.0mL/MSVOA_X/WATER
ALS Vial : 48 Sample Multiplier: 1

Instrument :
MSVOA_X
ClientSampleId :
MW-60

Quant Method : Z:\voasrv\HPCHEM1\MSVOA_X\Method\82X061822W.M
Quant Title : SW846 8260

TIC Library : C:\Database\NIST0.L
TIC Integration Parameters: LSCINT.P

No Library Search Compounds Detected

Data Path : Z:\voasrv\HPCHEM1\MSVOA_X\Data\VX062022\
Data File : VX029653.D
Acq On : 21 Jun 2022 10:01
Operator : JC/MD
Sample : N3354-16
Misc : 5.0mL/MSVOA_X/WATER
ALS Vial : 48 Sample Multiplier: 1

Instrument :
MSVOA_X
ClientSampleId :
MW-60

Quant Method : Z:\voasrv\HPCHEM1\MSVOA_X\Method\82X061822W.M
Quant Title : SW846 8260

TIC Library : C:\Database\NIST0.L
TIC Integration Parameters: LSCINT.P

TIC Top Hit name	RT	EstConc	Units	Response	--Internal Standard--		
					#	RT	Resp Conc
