

Data Path : Z:\voasrv\HPCHEM1\MSVOA_X\Data\VX062024\
 Data File : VX041953.D
 Acq On : 20 Jun 2024 10:03
 Operator : JC/MD
 Sample : VX0620WBS01
 Misc : 5.0mL/MSVOA_X/WATER
 ALS Vial : 3 Sample Multiplier: 1

Instrument :
 MSVOA_X
 ClientSampleId :

Quant Time: Jun 21 03:13:03 2024
 Quant Method : Z:\voasrv\HPCHEM1\MSVOA_X\Method\624X061424W.M
 Quant Title : METHOD 624 VOLATILE ORGANIC ANALYSIS
 QLast Update : Sat Jun 15 04:02:59 2024
 Response via : Initial Calibration

Compound	R.T.	QIon	Response	Conc	Units	Dev(Min)
Internal Standards						
1) Bromochloromethane	4.898	128	30819	30.000	ug/l	0.00
28) 1,4-Difluorobenzene	6.757	114	174340	30.000	ug/l	0.00
57) Chlorobenzene-d5	10.055	117	163252	30.000	ug/l	0.00
System Monitoring Compounds						
27) 1,2-Dichloroethane-d4	5.952	65	64251	30.285	ug/l	0.00
Spiked Amount	30.000	Range 91 - 110	Recovery	=	100.933%	
60) 4-Bromofluorobenzene	11.079	95	76379	30.225	ug/l	0.00
Spiked Amount	30.000	Range 63 - 112	Recovery	=	100.733%	
63) Toluene-d8	8.647	98	211320	30.256	ug/l	0.00
Spiked Amount	30.000	Range 91 - 112	Recovery	=	100.867%	
Target Compounds						
						Qvalue
2) Dichlorodifluoromethane	1.167	85	38048	19.072	ug/l	94
3) Chloromethane	1.301	50	40490	18.156	ug/l	97
4) Vinyl Chloride	1.374	62	39984	18.334	ug/l	99
5) Bromomethane	1.599	94	21420	18.374	ug/l	100
6) Chloroethane	1.666	64	22706	24.369	ug/l	96
7) Trichlorofluoromethane	1.874	101	55974	20.380	ug/l	96
8) Diethyl Ether	2.136	74	22628	19.037	ug/l	98
9) 1,1,2-Trichlorotrifluo...	2.319	101	35791	19.169	ug/l	98
10) 1,1-Dichloroethene	2.313	96	34515	18.325	ug/l	92
11) Methyl Iodide	2.447	142	43459	17.728	ug/l	97
12) Methyl Acetate	2.709	43	46104	19.199	ug/l	100
13) Acrolein	2.239	56	44873	92.677	ug/l	100
14) Acrylonitrile	3.069	53	106055	93.052	ug/l	97
15) Acetone	2.386	58	36425	111.718	ug/l	99
16) Carbon Disulfide	2.502	76	72703	17.613	ug/l	99
17) Allyl chloride	2.660	41	56080	19.605	ug/l	98
18) Methylene Chloride	2.788	84	39384	18.230	ug/l	95
19) trans-1,2-Dichloroethene	3.087	96	34587	18.331	ug/l	99
20) Diisopropyl ether	3.764	45	111754	19.007	ug/l	95
21) 1,1-Dichloroethane	3.605	63	62522	18.616	ug/l	99
22) cis-1,2-Dichloroethene	4.489	96	41914	18.351	ug/l	97
23) tert-Butyl Alcohol	2.989	59	39596	93.444	ug/l #	100
24) Methyl tert-Butyl Ether	3.117	73	107320	18.420	ug/l	100
25) Chloroform	5.087	83	64464	18.887	ug/l	99
26) Cyclohexane	5.465	56	53589	18.371	ug/l #	99
29) 1,1-Dichloropropene	5.684	75	43756	19.230	ug/l	97
30) 2-Butanone	4.562	43	152298	100.171	ug/l	99
31) 2,2-Dichloropropane	4.471	77	48046	19.270	ug/l	99
32) 1,1,1-Trichloroethane	5.379	97	54509	18.898	ug/l	99
33) Carbon Tetrachloride	5.672	117	46009	18.495	ug/l	96
34) Benzene	6.031	78	142762	18.834	ug/l	100
35) Methacrylonitrile	4.922	41	28882	18.913	ug/l	93
36) 1,2-Dichloroethane	6.086	62	46165	19.550	ug/l	98
37) Trichloroethene	7.123	130	37814	18.264	ug/l	99
38) Methylcyclohexane	7.379	83	56839	18.859	ug/l	99
39) 1,2-Dichloropropane	7.428	63	33516	18.562	ug/l	95
40) Dibromomethane	7.580	93	25265	18.915	ug/l	98
41) Bromodichloromethane	7.824	83	44884	18.757	ug/l	99
42) Vinyl Acetate	3.721	43	489414	96.169	ug/l	99

Data Path : Z:\voasrv\HPCHEM1\MSVOA_X\Data\VX062024\
 Data File : VX041953.D
 Acq On : 20 Jun 2024 10:03
 Operator : JC/MD
 Sample : VX0620WBS01
 Misc : 5.0mL/MSVOA_X/WATER
 ALS Vial : 3 Sample Multiplier: 1

Instrument :
 MSVOA_X
 ClientSampleId :

Quant Time: Jun 21 03:13:03 2024
 Quant Method : Z:\voasrv\HPCHEM1\MSVOA_X\Method\624X061424W.M
 Quant Title : METHOD 624 VOLATILE ORGANIC ANALYSIS
 QLast Update : Sat Jun 15 04:02:59 2024
 Response via : Initial Calibration

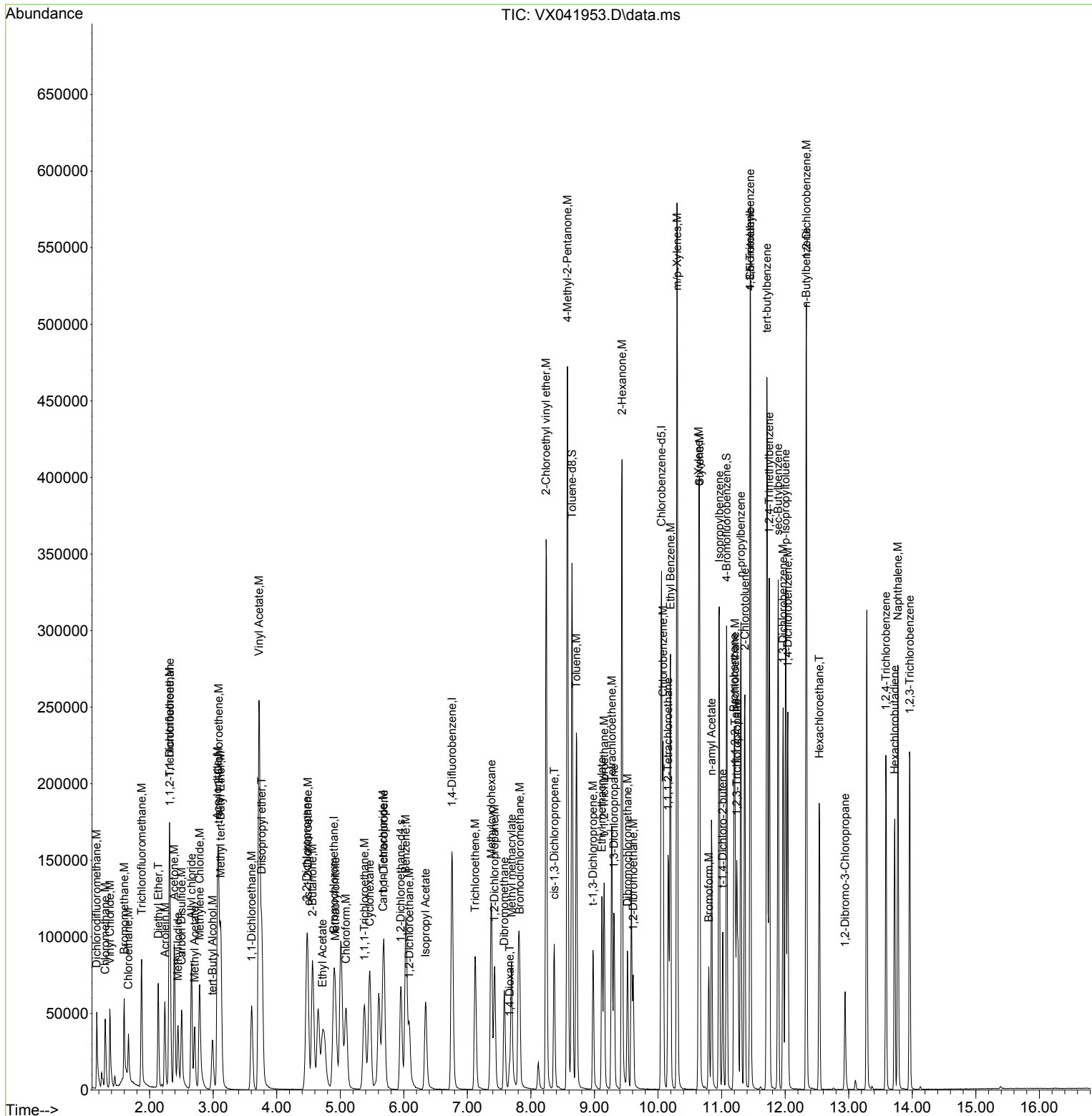
Compound	R.T.	QIon	Response	Conc	Units	Dev(Min)
43) Ethyl Acetate	4.721	43	52548	18.433	ug/l	100
44) Isopropyl Acetate	6.342	43	79703	18.667	ug/l	98
45) 1,4-Dioxane	7.665	88	15614	300.005	ug/l	96
46) Methyl methacrylate	7.696	41	39222	18.788	ug/l	99
47) n-amyl Acetate	10.842	43	70869	18.494	ug/l	99
48) t-1,3-Dichloropropene	8.976	75	45369	18.415	ug/l	98
49) cis-1,3-Dichloropropene	8.366	75	52287	18.920	ug/l	99
50) 1,1,2-Trichloroethane	9.153	97	37268	19.189	ug/l	98
51) Ethyl methacrylate	9.116	69	56579	18.338	ug/l	98
52) 1,3-Dichloropropane	9.305	76	60462	19.042	ug/l	99
53) Dibromochloromethane	9.519	129	39678	18.669	ug/l	98
54) 1,2-Dibromoethane	9.610	107	39178	19.129	ug/l	99
55) 2-Chloroethyl vinyl ether	8.238	63	148641	103.505	ug/l	99
56) Bromoform	10.799	173	30964	17.866	ug/l	98
58) 4-Methyl-2-Pentanone	8.574	43	280380	95.845	ug/l	100
59) 2-Hexanone	9.433	43	225556	99.897	ug/l	99
61) Tetrachloroethene	9.275	164	38512	18.747	ug/l	98
62) Toluene	8.714	91	157163	19.024	ug/l	100
64) Chlorobenzene	10.080	112	107094	19.037	ug/l	97
65) 1,1,1,2-Tetrachloroethane	10.159	131	36175	18.620	ug/l	100
66) Ethyl Benzene	10.195	91	171534	18.992	ug/l	98
67) m/p-Xylenes	10.299	106	138759	38.195	ug/l	98
68) o-Xylene	10.640	106	67496	18.635	ug/l	100
69) Styrene	10.653	104	114810	18.969	ug/l	99
70) Isopropylbenzene	10.964	105	176866	19.421	ug/l	99
71) 1,1,2,2-Tetrachloroethane	11.213	83	59789	18.970	ug/l	99
72) 1,2,3-Trichloropropane	11.238	75	64421	25.236	ug/l	89
73) Bromobenzene	11.195	156	48863	18.395	ug/l	99
74) n-propylbenzene	11.305	91	193806	19.373	ug/l	100
75) 2-Chlorotoluene	11.366	91	122853	19.339	ug/l	99
76) 1,3,5-Trimethylbenzene	11.451	105	146384	19.187	ug/l	99
77) t-1,4-Dichloro-2-butene	11.018	75	16126	17.076	ug/l	97
78) 4-Chlorotoluene	11.451	91	135188	19.157	ug/l	99
79) tert-butylbenzene	11.713	119	152456	18.825	ug/l	99
80) 1,2,4-Trimethylbenzene	11.750	105	147528	19.355	ug/l	97
81) sec-Butylbenzene	11.890	105	183858	19.465	ug/l	99
82) p-Isopropyltoluene	12.006	119	158822	19.187	ug/l	99
83) 1,3-Dichlorobenzene	11.969	146	88144	18.610	ug/l	99
84) 1,4-Dichlorobenzene	12.043	146	87947	18.654	ug/l	99
85) n-Butylbenzene	12.329	91	121394	18.965	ug/l	99
86) Hexachloroethane	12.536	117	25216	18.654	ug/l	98
87) 1,2-Dichlorobenzene	12.335	146	89009	18.582	ug/l	100
88) 1,2-Dibromo-3-Chloropr...	12.945	75	11718	17.975	ug/l	97
89) 1,2,4-Trichlorobenzene	13.585	180	57810	17.829	ug/l	98
90) Hexachlorobutadiene	13.725	225	31003	19.404	ug/l	99
91) Naphthalene	13.774	128	173962	17.756	ug/l	100
92) 1,2,3-Trichlorobenzene	13.963	180	61203	18.226	ug/l	99

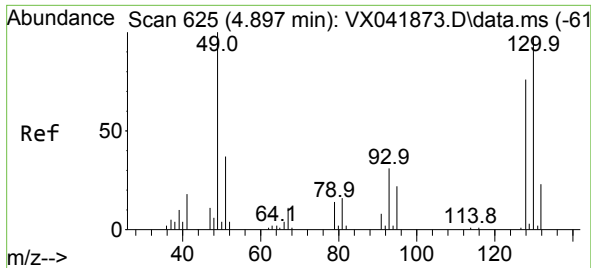
(#) = qualifier out of range (m) = manual integration (+) = signals summed

Data Path : Z:\voasrv\HPCHEM1\MSVOA_X\Data\VX062024\
 Data File : VX041953.D
 Acq On : 20 Jun 2024 10:03
 Operator : JC/MD
 Sample : VX0620WBS01
 Misc : 5.0mL/MSVOA_X/WATER
 ALS Vial : 3 Sample Multiplier: 1

Instrument :
 MSVOA_X
 ClientSampleId :

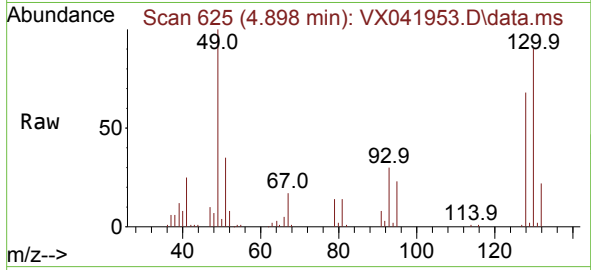
Quant Time: Jun 21 03:13:03 2024
 Quant Method : Z:\voasrv\HPCHEM1\MSVOA_X\Method\624X061424W.M
 Quant Title : METHOD 624 VOLATILE ORGANIC ANALYSIS
 QLast Update : Sat Jun 15 04:02:59 2024
 Response via : Initial Calibration



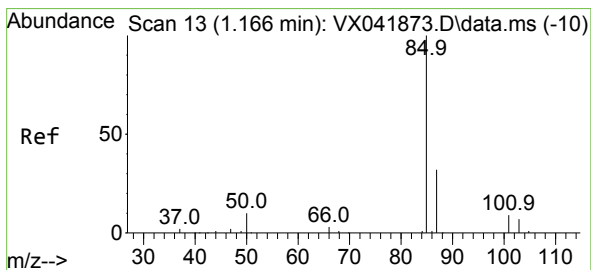
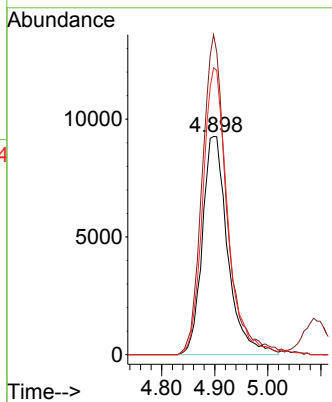
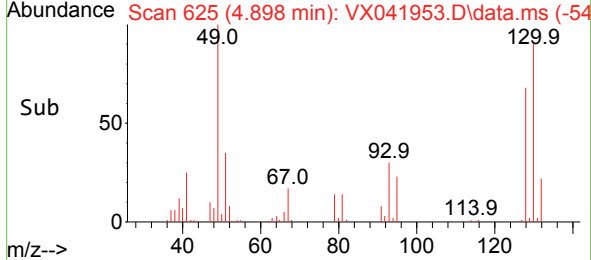


#1
 Bromochloromethane
 Concen: 30.000 ug/l
 RT: 4.898 min Scan# 61
 Delta R.T. 0.001 min
 Lab File: VX041953.D
 Acq: 20 Jun 2024 10:03

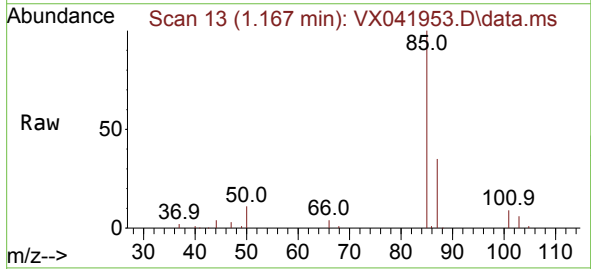
Instrument :
 MSVOA_X
 ClientSampleId :



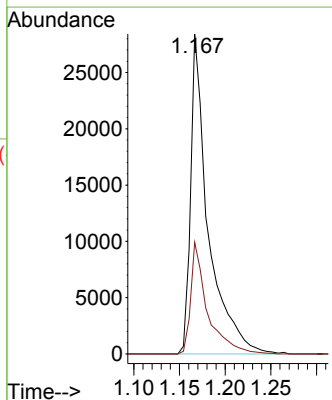
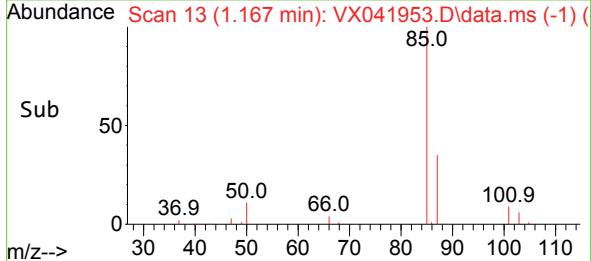
Tgt Ion:128 Resp: 30819
 Ion Ratio Lower Upper
 128 100
 49 141.1 0.0 338.5
 130 128.9 0.0 324.5

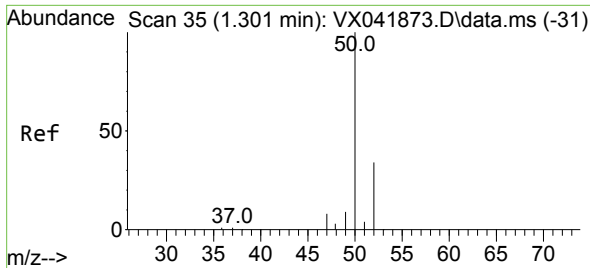


#2
 Dichlorodifluoromethane
 Concen: 19.072 ug/l
 RT: 1.167 min Scan# 13
 Delta R.T. 0.000 min
 Lab File: VX041953.D
 Acq: 20 Jun 2024 10:03



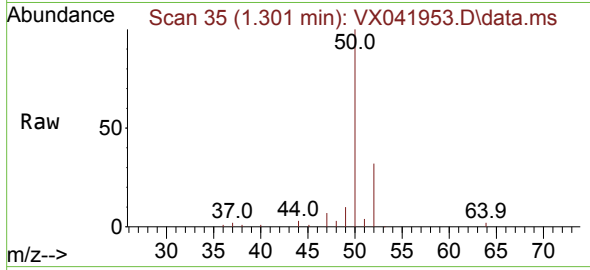
Tgt Ion: 85 Resp: 38048
 Ion Ratio Lower Upper
 85 100
 87 34.9 15.8 47.3



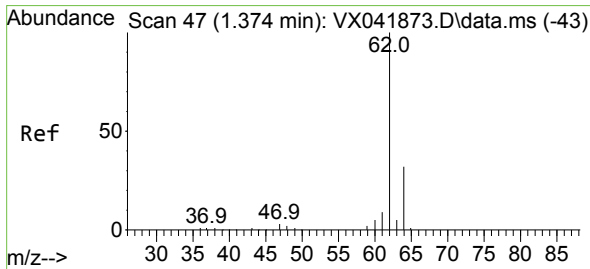
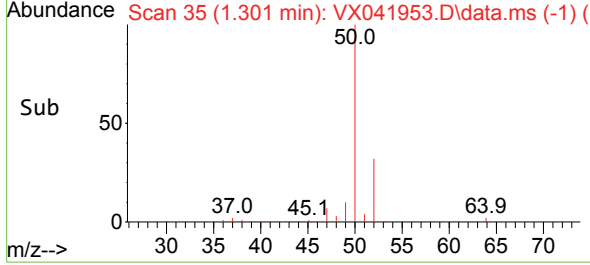
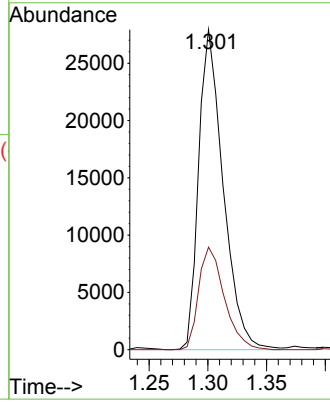


#3
 Chloromethane
 Concen: 18.156 ug/l
 RT: 1.301 min Scan# 31
 Delta R.T. 0.000 min
 Lab File: VX041953.D
 Acq: 20 Jun 2024 10:03

Instrument :
 MSVOA_X
 ClientSampleId :

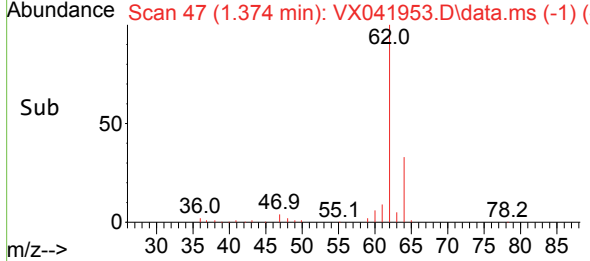
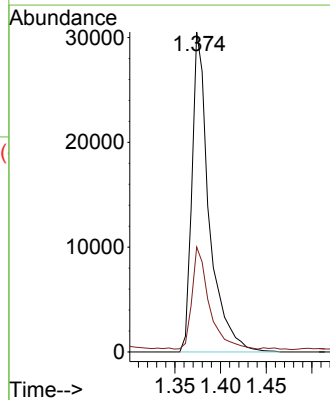
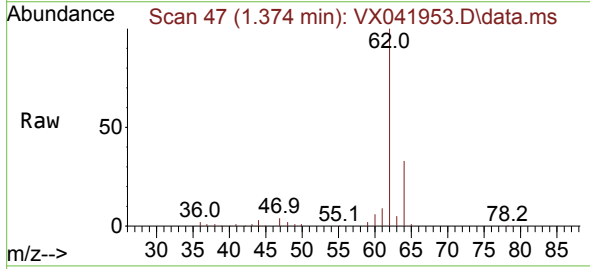


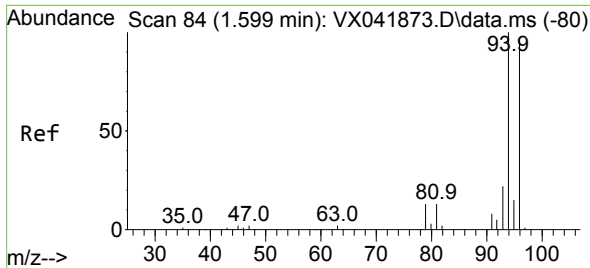
Tgt Ion: 50 Resp: 40490
 Ion Ratio Lower Upper
 50 100
 52 32.1 26.9 40.3



#4
 Vinyl Chloride
 Concen: 18.334 ug/l
 RT: 1.374 min Scan# 47
 Delta R.T. 0.000 min
 Lab File: VX041953.D
 Acq: 20 Jun 2024 10:03

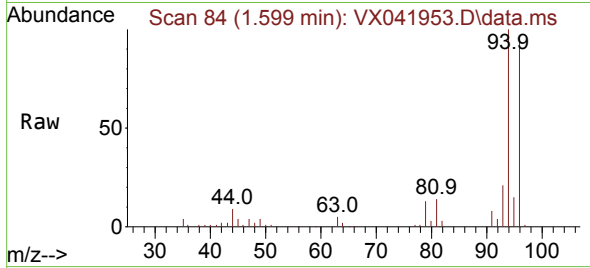
Tgt Ion: 62 Resp: 39984
 Ion Ratio Lower Upper
 62 100
 64 31.9 26.1 39.1



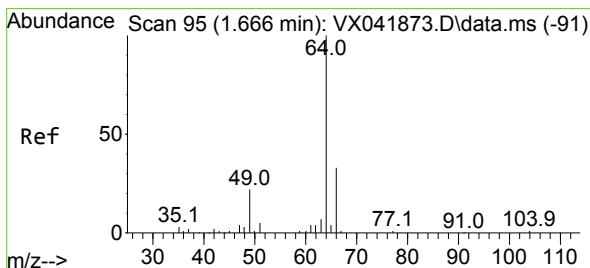
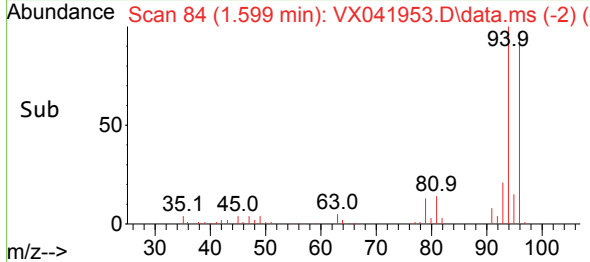
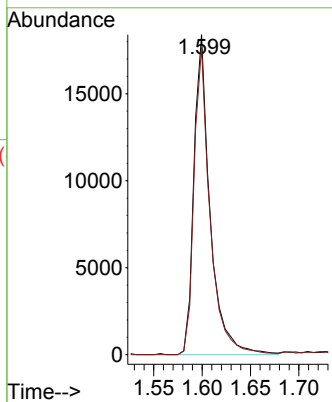


#5
 Bromomethane
 Concen: 18.374 ug/l
 RT: 1.599 min Scan# 84
 Delta R.T. 0.000 min
 Lab File: VX041953.D
 Acq: 20 Jun 2024 10:03

Instrument :
 MSVOA_X
 ClientSampleId :

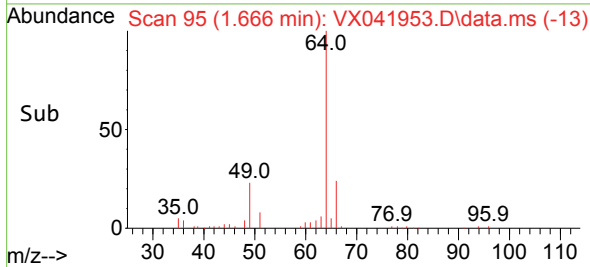
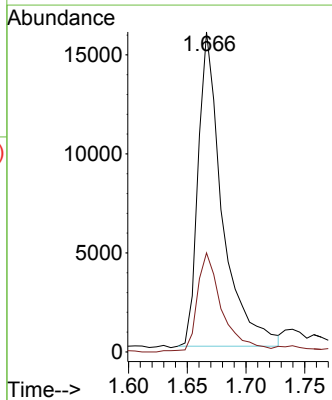
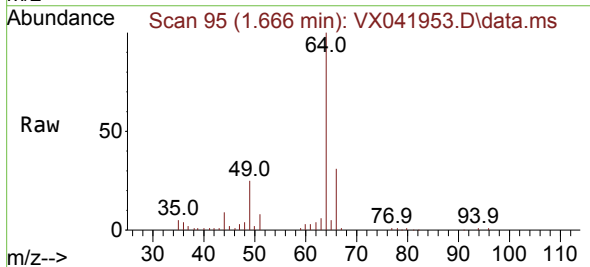


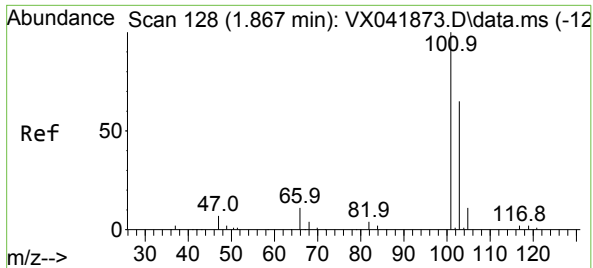
Tgt Ion: 94 Resp: 21420
 Ion Ratio Lower Upper
 94 100
 96 96.0 76.6 115.0



#6
 Chloroethane
 Concen: 24.369 ug/l
 RT: 1.666 min Scan# 95
 Delta R.T. 0.000 min
 Lab File: VX041953.D
 Acq: 20 Jun 2024 10:03

Tgt Ion: 64 Resp: 22706
 Ion Ratio Lower Upper
 64 100
 66 31.0 26.4 39.6

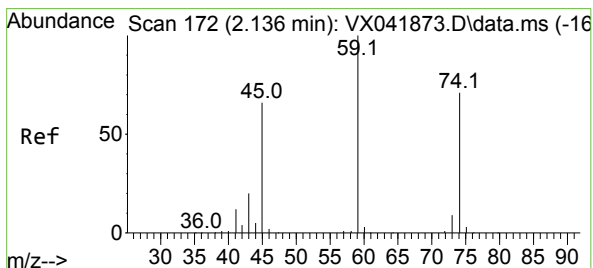
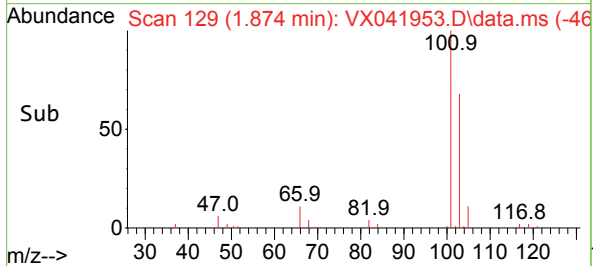
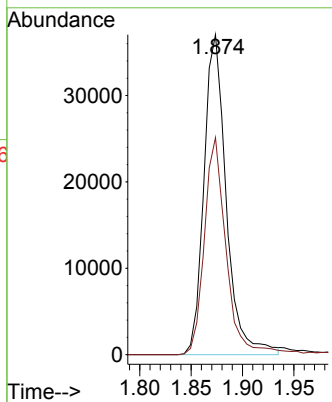
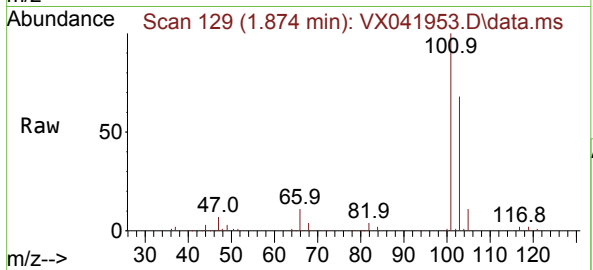




#7
 Trichlorofluoromethane
 Concen: 20.380 ug/l
 RT: 1.874 min Scan# 11
 Delta R.T. 0.006 min
 Lab File: VX041953.D
 Acq: 20 Jun 2024 10:03

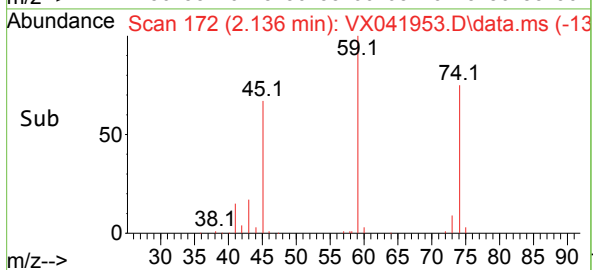
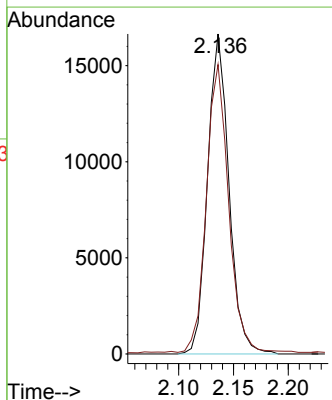
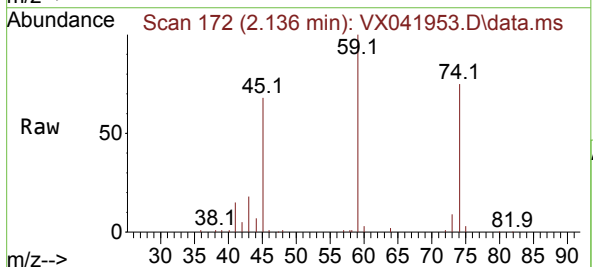
Instrument :
 MSVOA_X
 ClientSampleId :

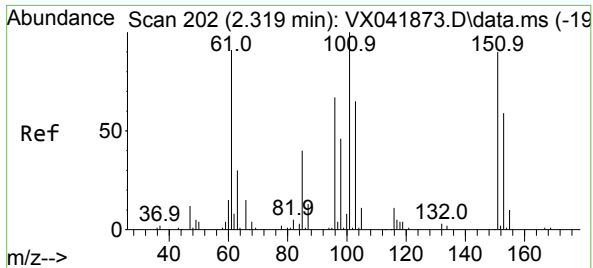
Tgt Ion:101 Resp: 55974
 Ion Ratio Lower Upper
 101 100
 103 67.9 51.8 77.8



#8
 Diethyl Ether
 Concen: 19.037 ug/l
 RT: 2.136 min Scan# 172
 Delta R.T. 0.000 min
 Lab File: VX041953.D
 Acq: 20 Jun 2024 10:03

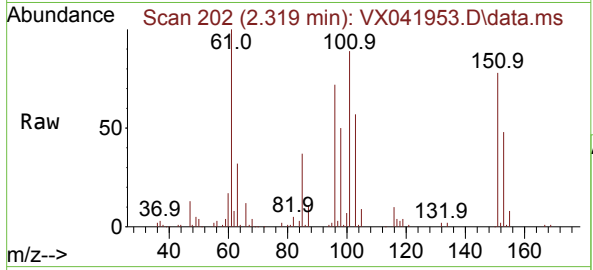
Tgt Ion: 74 Resp: 22628
 Ion Ratio Lower Upper
 74 100
 45 95.2 18.7 168.7



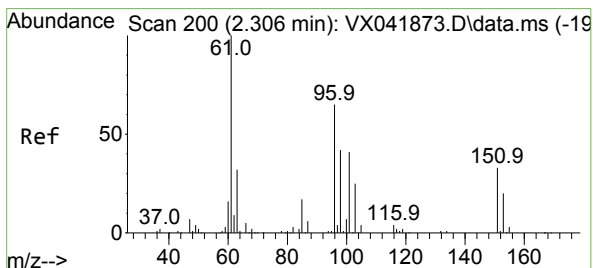
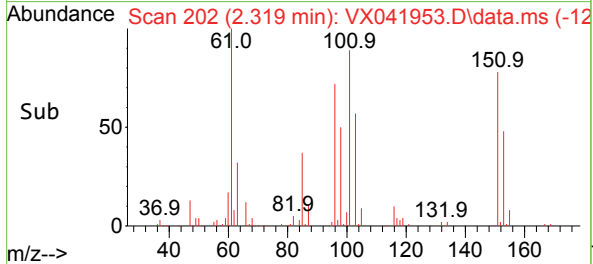
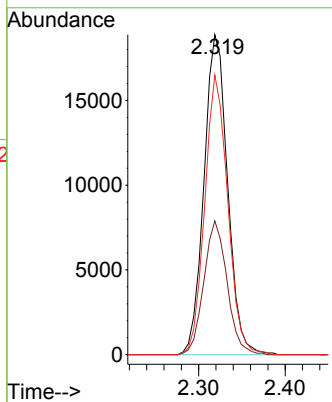


#9
 1,1,2-Trichlorotrifluoroethane
 Concen: 19.169 ug/l
 RT: 2.319 min Scan# 201
 Delta R.T. 0.000 min
 Lab File: VX041953.D
 Acq: 20 Jun 2024 10:03

Instrument : MSVOA_X
 ClientSampleId :

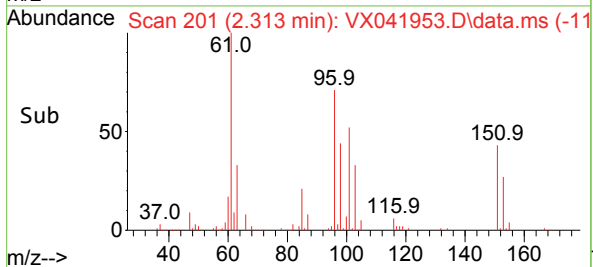
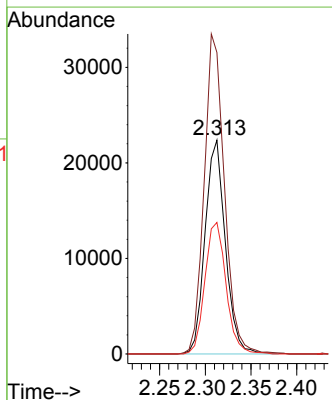
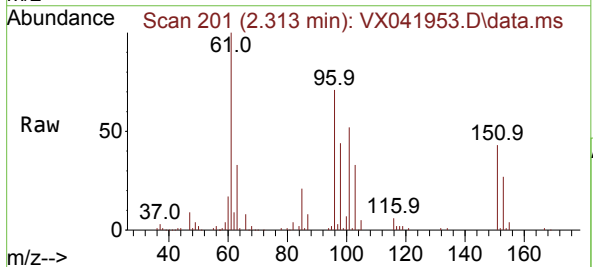


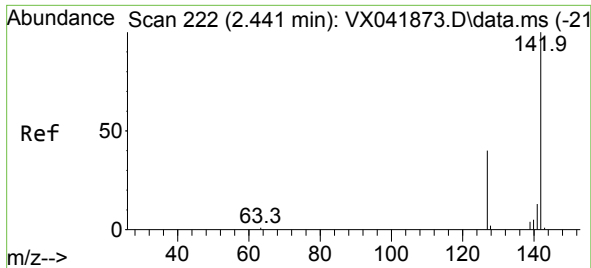
Tgt Ion: 101 Resp: 35791
 Ion Ratio Lower Upper
 101 100
 85 41.2 0.0 80.4
 151 85.3 0.0 175.2



#10
 1,1-Dichloroethene
 Concen: 18.325 ug/l
 RT: 2.313 min Scan# 201
 Delta R.T. 0.006 min
 Lab File: VX041953.D
 Acq: 20 Jun 2024 10:03

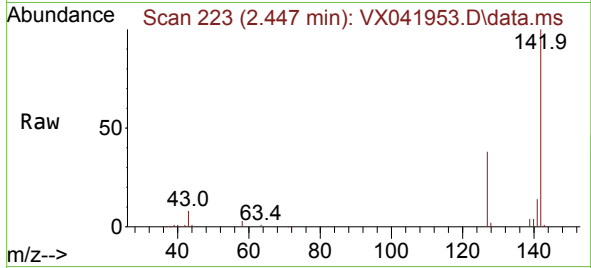
Tgt Ion: 96 Resp: 34515
 Ion Ratio Lower Upper
 96 100
 61 141.0 122.3 183.5
 98 61.5 51.5 77.3



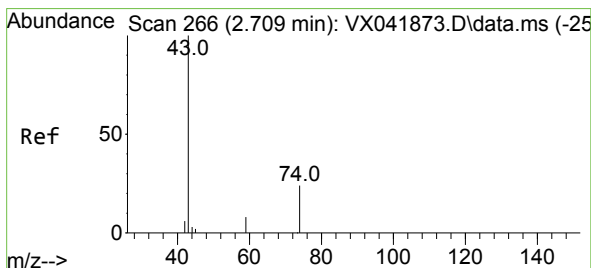
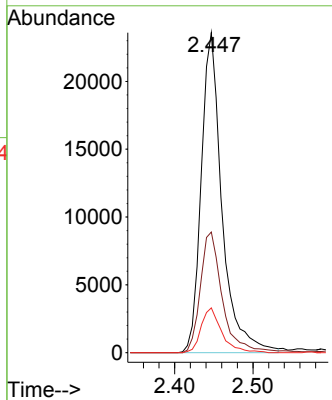
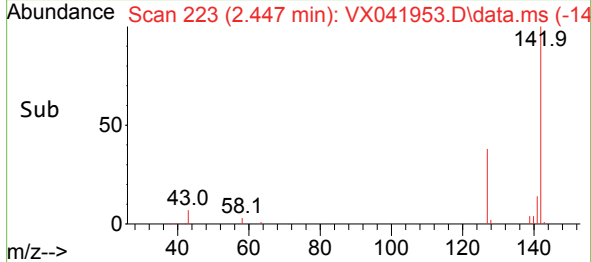


#11
 Methyl Iodide
 Concen: 17.728 ug/l
 RT: 2.447 min Scan# 21
 Delta R.T. 0.006 min
 Lab File: VX041953.D
 Acq: 20 Jun 2024 10:03

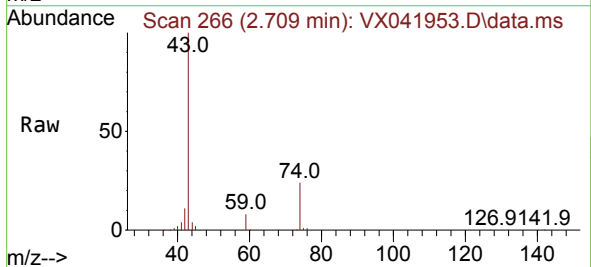
Instrument :
 MSVOA_X
 ClientSampleId :



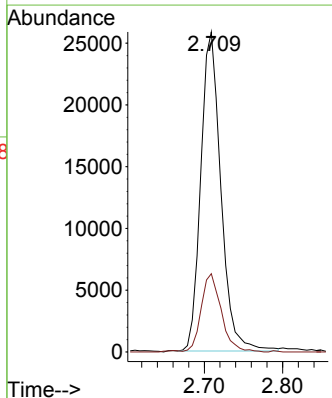
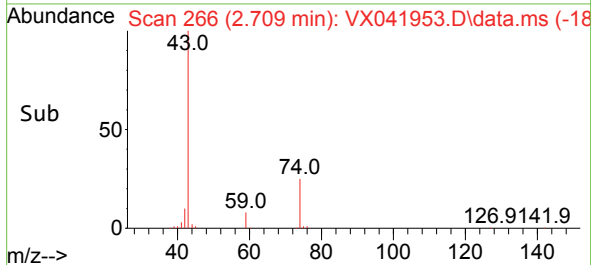
Tgt Ion:142 Resp: 43459
 Ion Ratio Lower Upper
 142 100
 127 37.7 19.8 59.3
 141 14.1 6.7 20.1

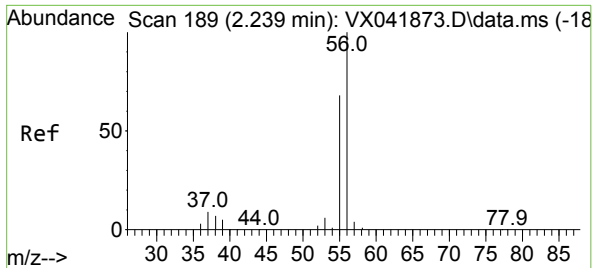


#12
 Methyl Acetate
 Concen: 19.199 ug/l
 RT: 2.709 min Scan# 266
 Delta R.T. 0.000 min
 Lab File: VX041953.D
 Acq: 20 Jun 2024 10:03



Tgt Ion: 43 Resp: 46104
 Ion Ratio Lower Upper
 43 100
 74 24.4 19.4 29.2

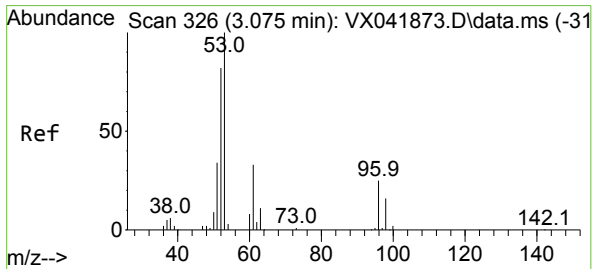
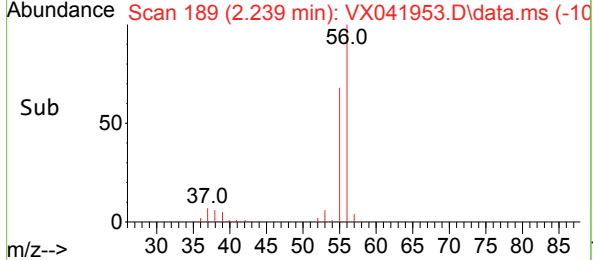
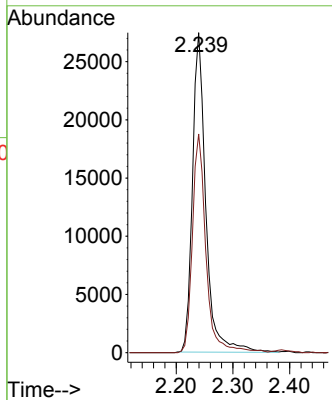
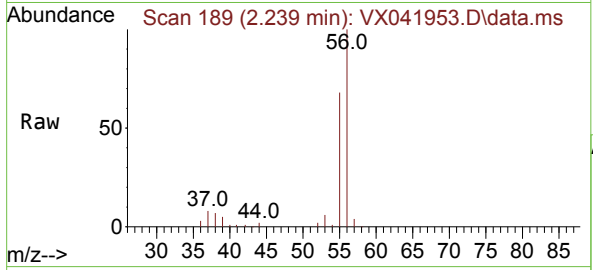




#13
 Acrolein
 Concen: 92.677 ug/l
 RT: 2.239 min Scan# 189
 Delta R.T. 0.000 min
 Lab File: VX041953.D
 Acq: 20 Jun 2024 10:03

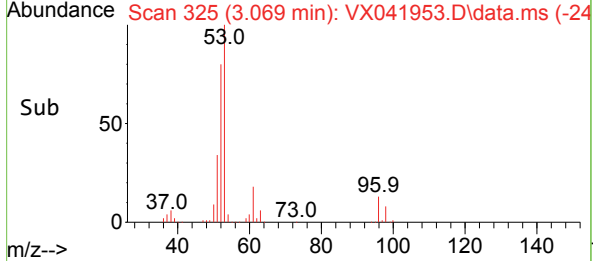
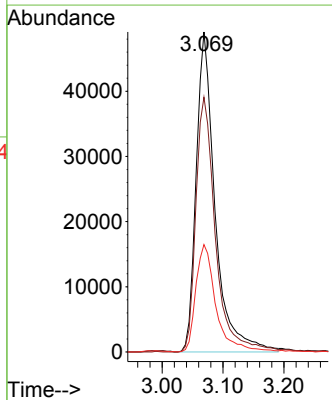
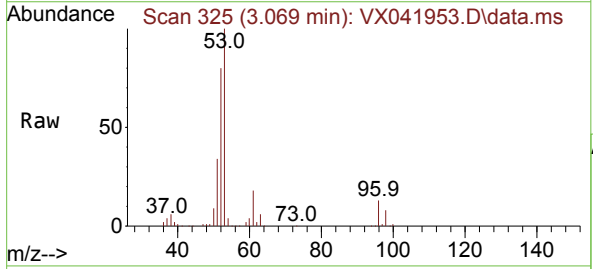
Instrument : MSVOA_X
 ClientSampleId :

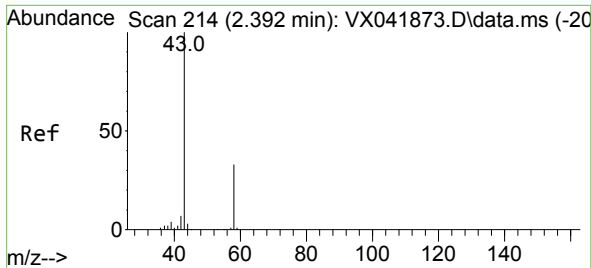
Tgt Ion	Resp	Ion Ratio	Lower	Upper
56	44873	100		
55		69.1	55.4	83.0



#14
 Acrylonitrile
 Concen: 93.052 ug/l
 RT: 3.069 min Scan# 325
 Delta R.T. -0.006 min
 Lab File: VX041953.D
 Acq: 20 Jun 2024 10:03

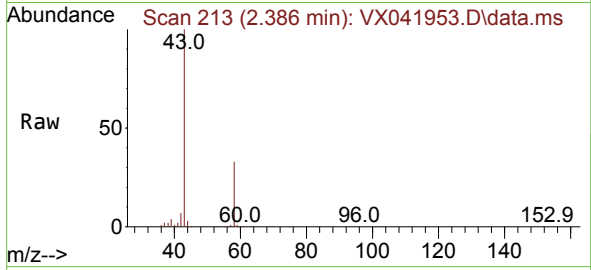
Tgt Ion	Resp	Ion Ratio	Lower	Upper
53	106055	100		
52		83.0	39.9	119.7
51		35.8	17.4	52.3



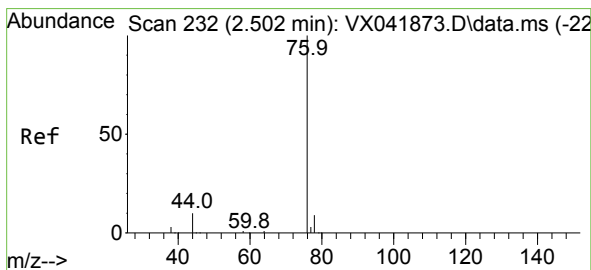
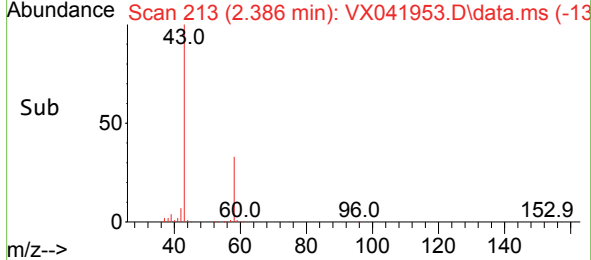
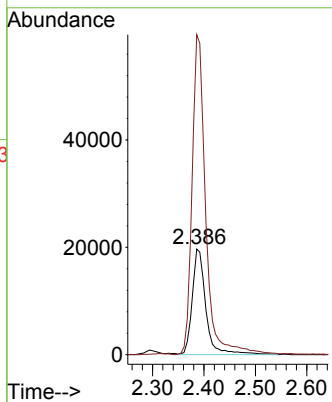


#15
 Acetone
 Concen: 111.718 ug/l
 RT: 2.386 min Scan# 214
 Delta R.T. -0.006 min
 Lab File: VX041953.D
 Acq: 20 Jun 2024 10:03

Instrument : MSVOA_X
 ClientSampleId :

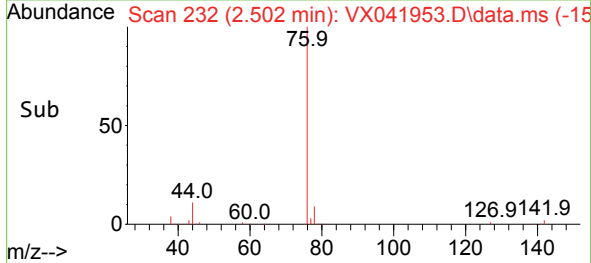
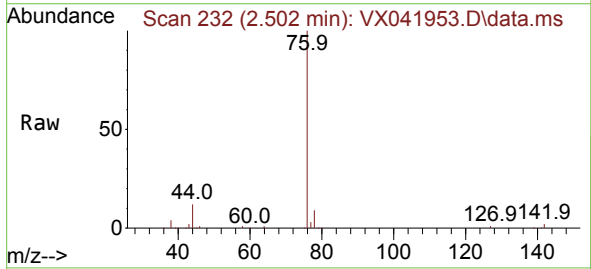
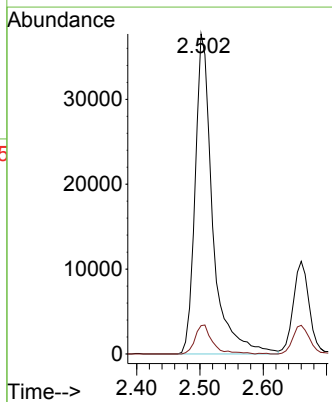


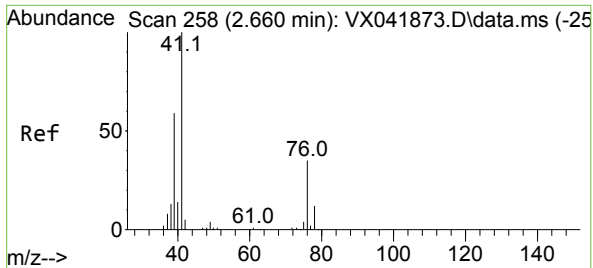
Tgt Ion: 58 Resp: 36425
 Ion Ratio Lower Upper
 58 100
 43 302.7 243.4 365.2



#16
 Carbon Disulfide
 Concen: 17.613 ug/l
 RT: 2.502 min Scan# 232
 Delta R.T. 0.000 min
 Lab File: VX041953.D
 Acq: 20 Jun 2024 10:03

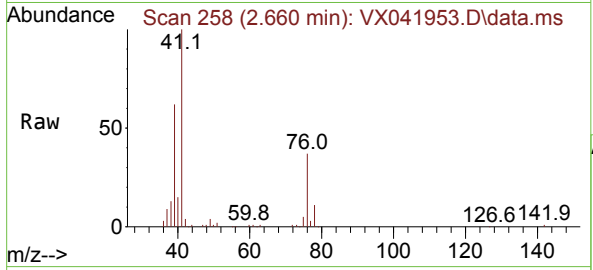
Tgt Ion: 76 Resp: 72703
 Ion Ratio Lower Upper
 76 100
 78 8.9 7.3 10.9





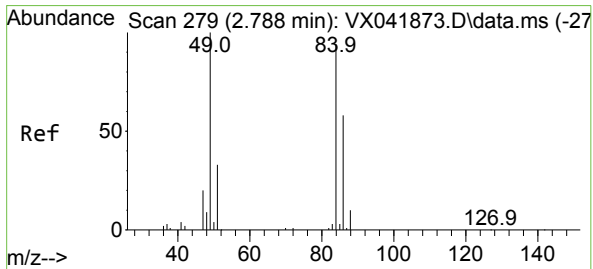
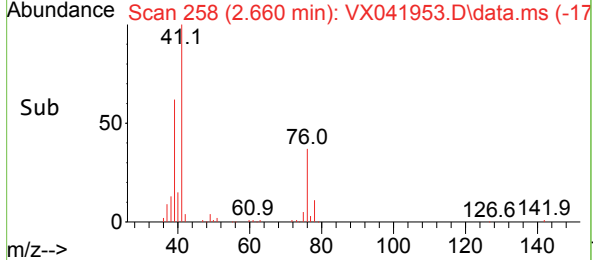
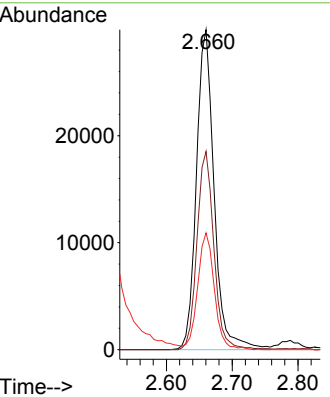
#17
 Allyl chloride
 Concen: 19.605 ug/l
 RT: 2.660 min Scan# 217
 Delta R.T. 0.000 min
 Lab File: VX041953.D
 Acq: 20 Jun 2024 10:03

Instrument : MSVOA_X
 ClientSampleId :



Tgt Ion: 41 Resp: 56080

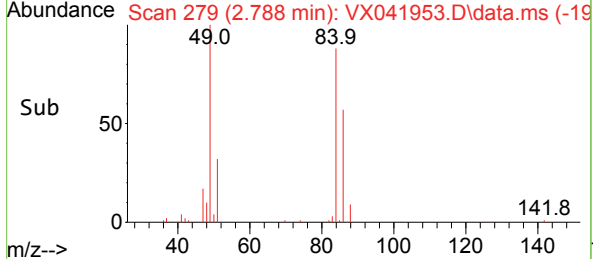
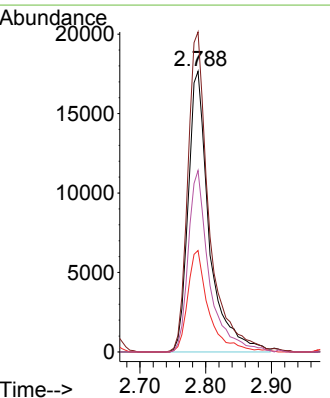
Ion	Ratio	Lower	Upper
41	100		
39	61.9	29.6	88.8
76	36.5	18.1	54.4

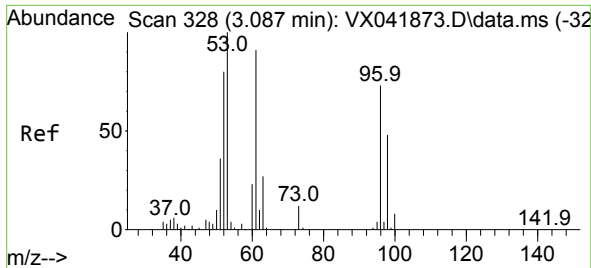


#18
 Methylene Chloride
 Concen: 18.230 ug/l
 RT: 2.788 min Scan# 279
 Delta R.T. 0.000 min
 Lab File: VX041953.D
 Acq: 20 Jun 2024 10:03

Tgt Ion: 84 Resp: 39384

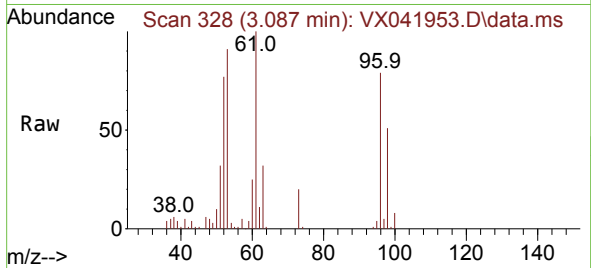
Ion	Ratio	Lower	Upper
84	100		
49	113.6	85.3	127.9
51	36.1	28.5	42.7
86	64.6	49.6	74.4



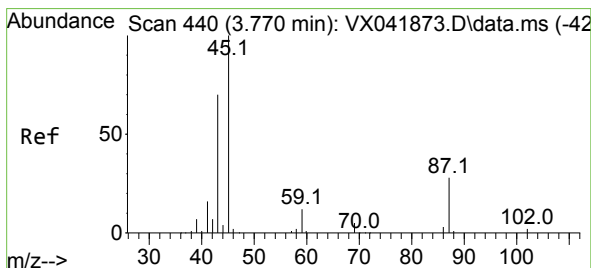
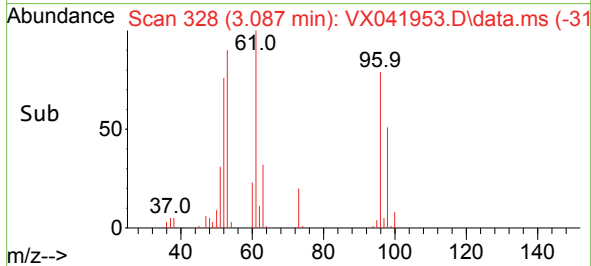
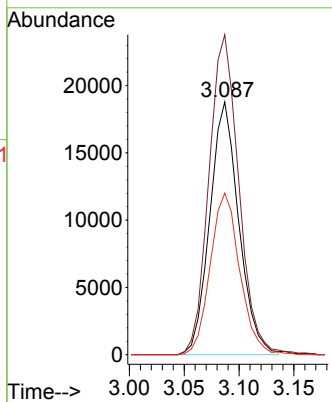


#19
 trans-1,2-Dichloroethene
 Concen: 18.331 ug/l
 RT: 3.087 min Scan# 31
 Delta R.T. 0.000 min
 Lab File: VX041953.D
 Acq: 20 Jun 2024 10:03

Instrument :
 MSVOA_X
 ClientSampleId :

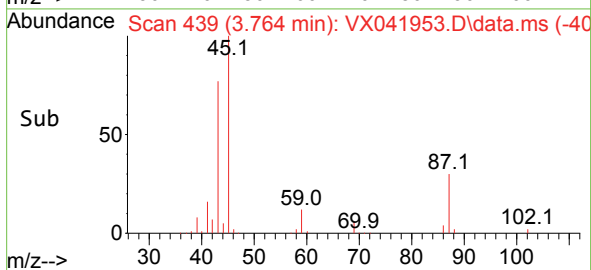
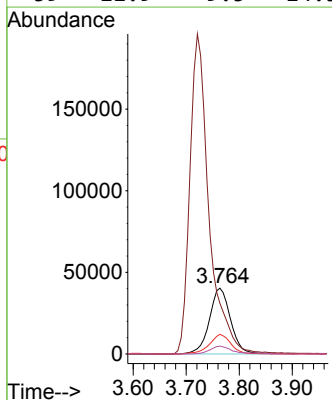
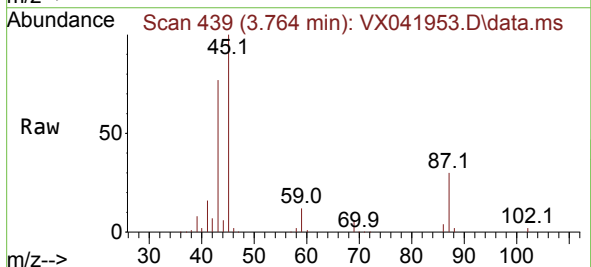


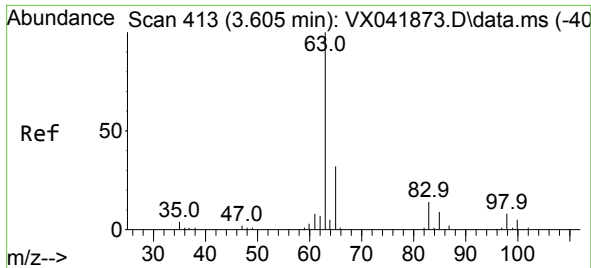
Tgt Ion: 96 Resp: 34587
 Ion Ratio Lower Upper
 96 100
 61 126.6 100.1 150.1
 98 64.0 52.1 78.1



#20
 Diisopropyl ether
 Concen: 19.007 ug/l
 RT: 3.764 min Scan# 439
 Delta R.T. -0.006 min
 Lab File: VX041953.D
 Acq: 20 Jun 2024 10:03

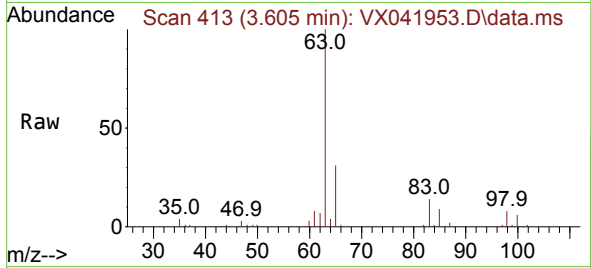
Tgt Ion: 45 Resp: 111754
 Ion Ratio Lower Upper
 45 100
 43 75.3 55.8 83.8
 87 29.9 22.6 34.0
 59 11.9 9.5 14.3



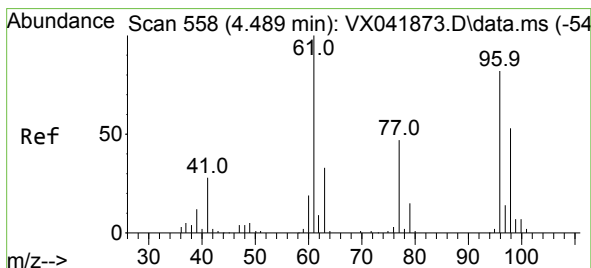
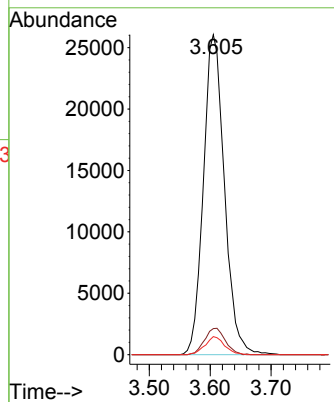
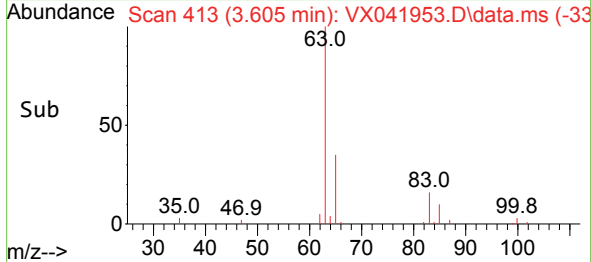


#21
 1,1-Dichloroethane
 Concen: 18.616 ug/l
 RT: 3.605 min Scan# 411
 Delta R.T. 0.000 min
 Lab File: VX041953.D
 Acq: 20 Jun 2024 10:03

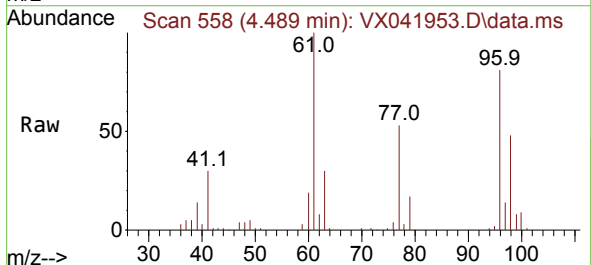
Instrument :
 MSVOA_X
 ClientSampleId :



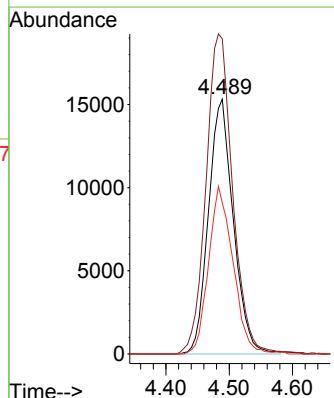
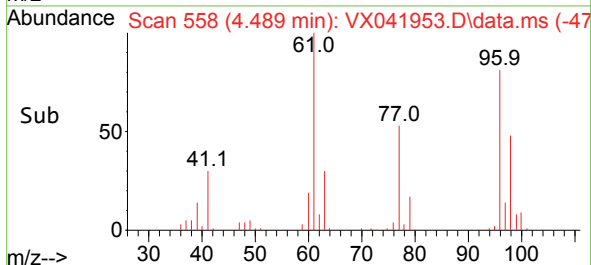
Tgt Ion: 63 Resp: 62522
 Ion Ratio Lower Upper
 63 100
 98 8.2 4.2 12.4
 100 5.6 2.5 7.4

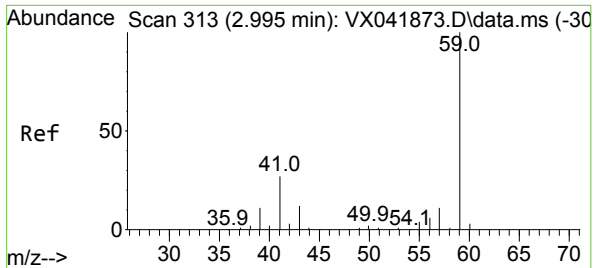


#22
 cis-1,2-Dichloroethene
 Concen: 18.351 ug/l
 RT: 4.489 min Scan# 558
 Delta R.T. 0.000 min
 Lab File: VX041953.D
 Acq: 20 Jun 2024 10:03



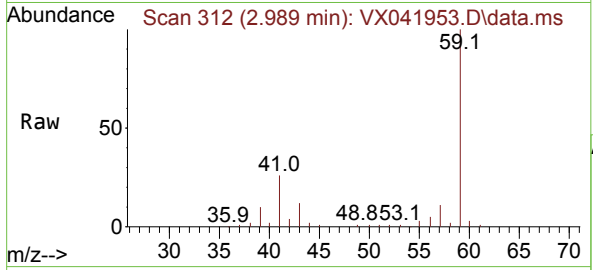
Tgt Ion: 96 Resp: 41914
 Ion Ratio Lower Upper
 96 100
 61 133.9 103.3 154.9
 98 64.2 52.2 78.2



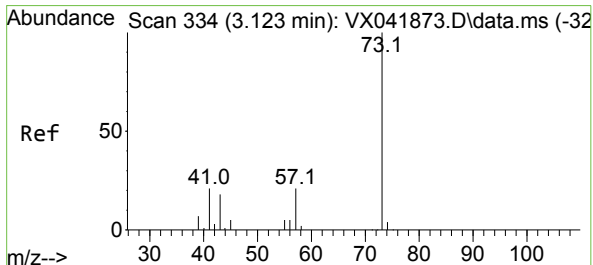
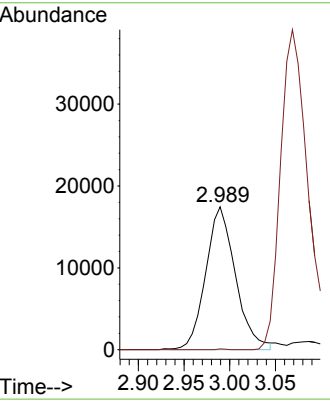
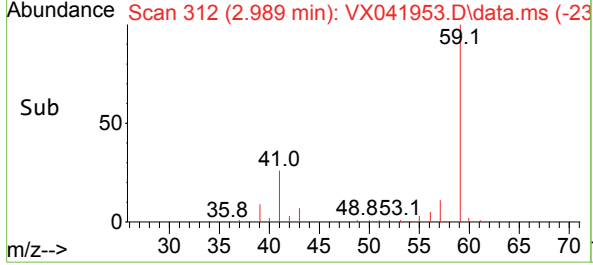


#23
 tert-Butyl Alcohol
 Concen: 93.444 ug/l
 RT: 2.989 min Scan# 311
 Delta R.T. -0.006 min
 Lab File: VX041953.D
 Acq: 20 Jun 2024 10:03

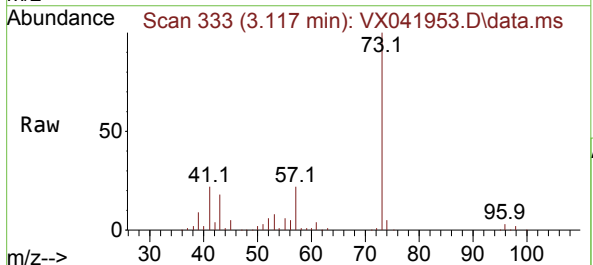
Instrument : MSVOA_X
 ClientSampleId :



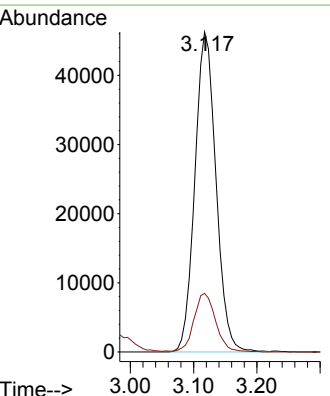
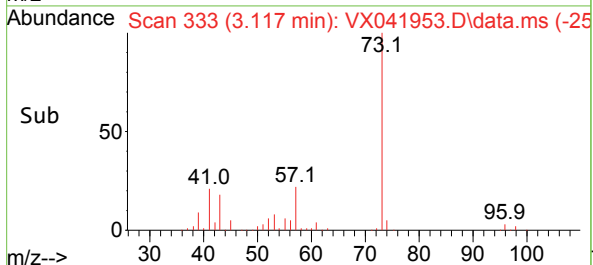
Tgt Ion: 59 Resp: 39596
 Ion Ratio Lower Upper
 59 100
 52 0.1 0.0 0.0#

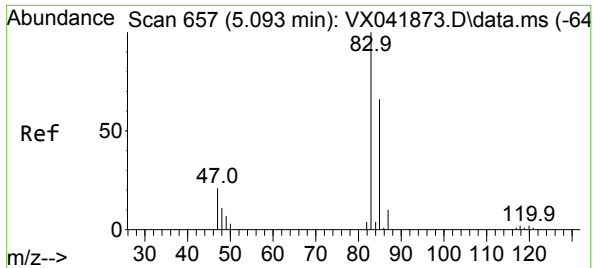


#24
 Methyl tert-Butyl Ether
 Concen: 18.420 ug/l
 RT: 3.117 min Scan# 333
 Delta R.T. -0.006 min
 Lab File: VX041953.D
 Acq: 20 Jun 2024 10:03



Tgt Ion: 73 Resp: 107320
 Ion Ratio Lower Upper
 73 100
 43 18.8 15.1 22.7

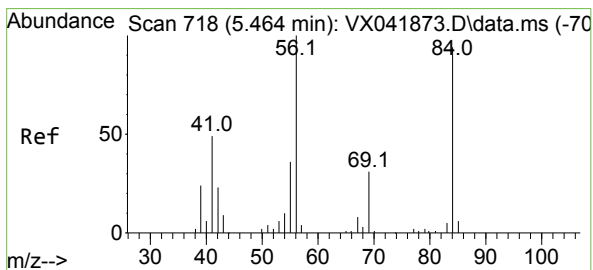
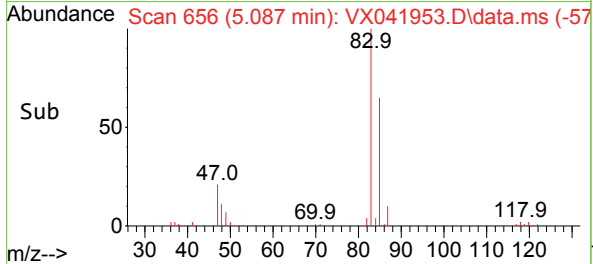
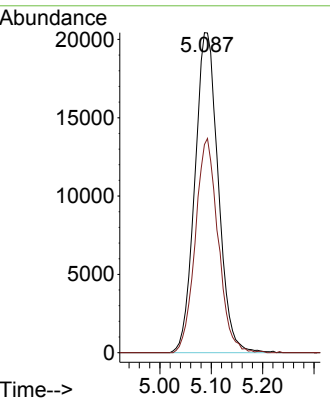
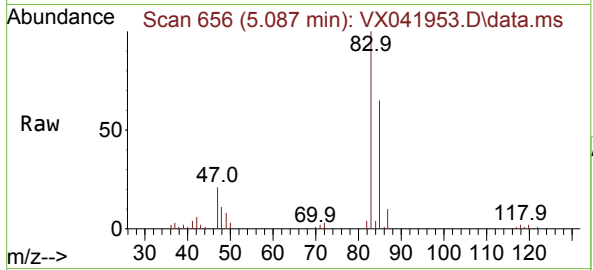




#25
 Chloroform
 Concen: 18.887 ug/l
 RT: 5.087 min Scan# 61
 Delta R.T. -0.006 min
 Lab File: VX041953.D
 Acq: 20 Jun 2024 10:03

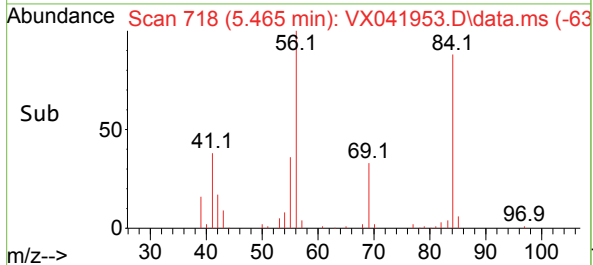
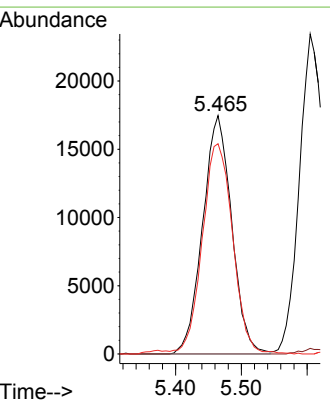
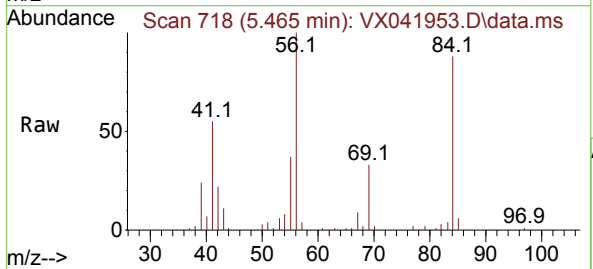
Instrument : MSVOA_X
 ClientSampleId :

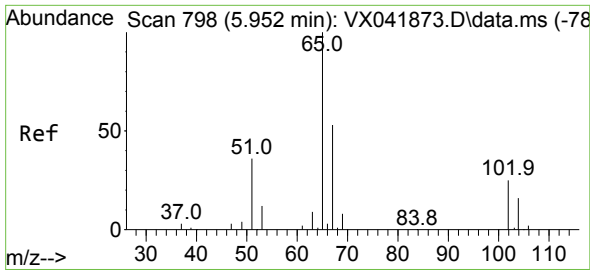
Tgt Ion: 83 Resp: 64464
 Ion Ratio Lower Upper
 83 100
 85 65.0 52.7 79.1



#26
 Cyclohexane
 Concen: 18.371 ug/l
 RT: 5.465 min Scan# 718
 Delta R.T. 0.000 min
 Lab File: VX041953.D
 Acq: 20 Jun 2024 10:03

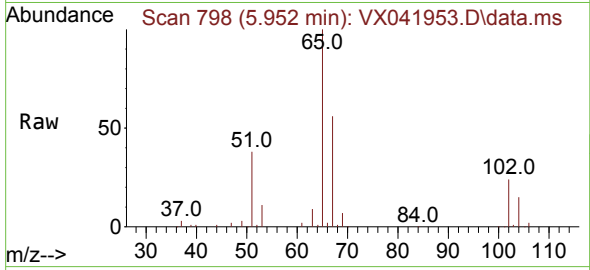
Tgt Ion: 56 Resp: 53589
 Ion Ratio Lower Upper
 56 100
 89 0.0 0.0 0.0
 84 90.1 73.1 109.7



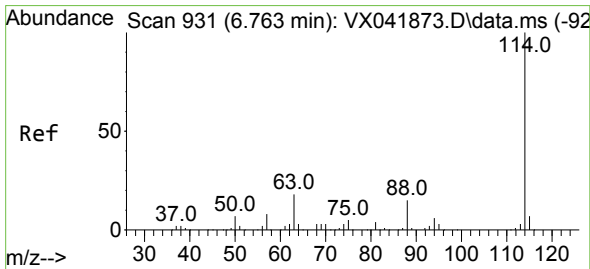
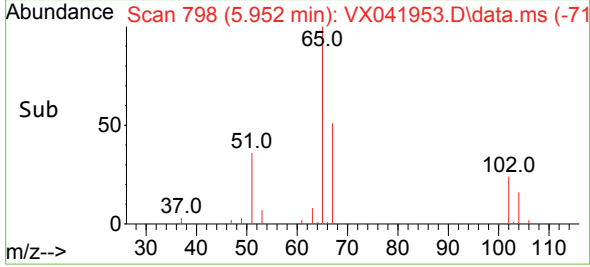
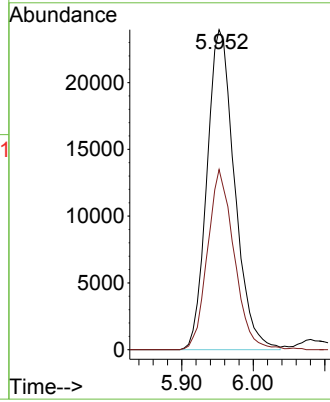


#27
 1,2-Dichloroethane-d4
 Concen: 30.285 ug/l
 RT: 5.952 min Scan# 798
 Delta R.T. 0.000 min
 Lab File: VX041953.D
 Acq: 20 Jun 2024 10:03

Instrument :
 MSVOA_X
 ClientSampleId :

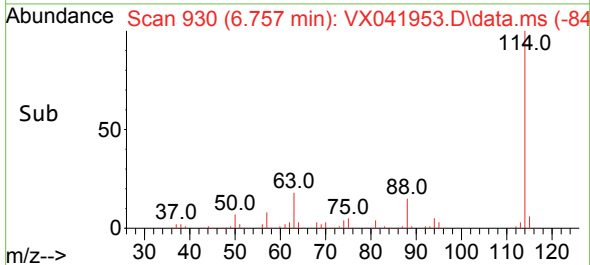
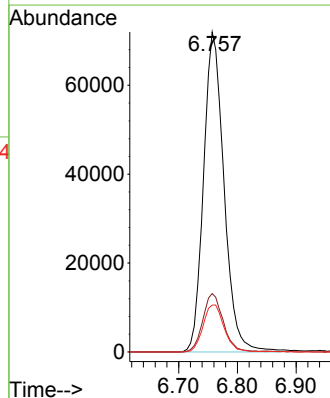
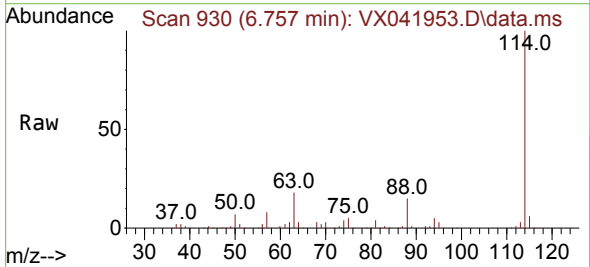


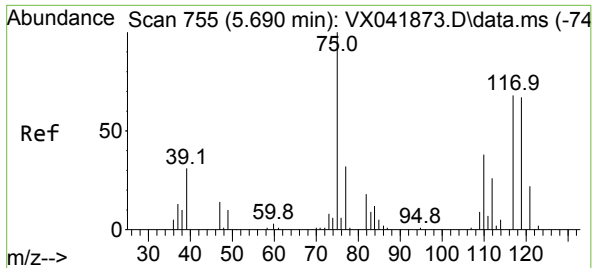
Tgt Ion: 65 Resp: 64251
 Ion Ratio Lower Upper
 65 100
 67 54.2 43.4 65.0



#28
 1,4-Difluorobenzene
 Concen: 30.000 ug/l
 RT: 6.757 min Scan# 930
 Delta R.T. -0.006 min
 Lab File: VX041953.D
 Acq: 20 Jun 2024 10:03

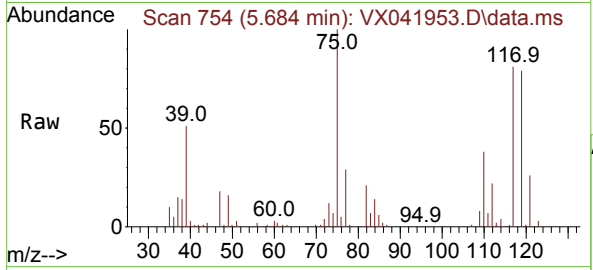
Tgt Ion: 114 Resp: 174340
 Ion Ratio Lower Upper
 114 100
 63 18.1 14.6 21.8
 88 15.0 11.8 17.8





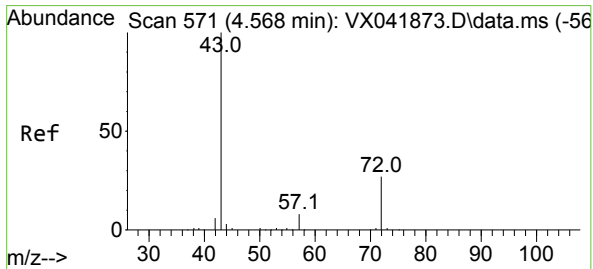
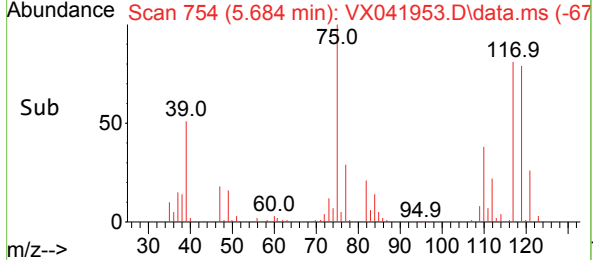
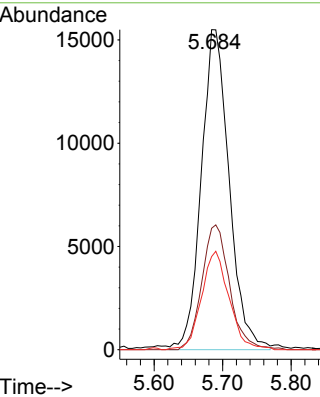
#29
 1,1-Dichloropropene
 Concen: 19.230 ug/l
 RT: 5.684 min Scan# 711
 Delta R.T. -0.006 min
 Lab File: VX041953.D
 Acq: 20 Jun 2024 10:03

Instrument :
 MSVOA_X
 ClientSampleId :



Tgt Ion: 75 Resp: 43756

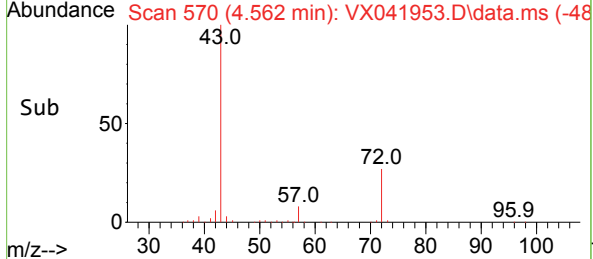
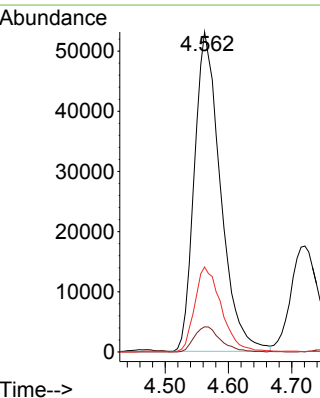
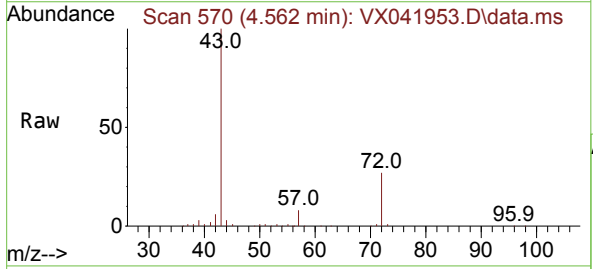
Ion	Ratio	Lower	Upper
75	100		
110	38.8	0.0	80.2
77	30.4	0.0	65.2

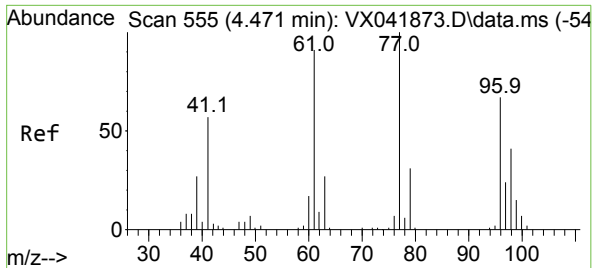


#30
 2-Butanone
 Concen: 100.171 ug/l
 RT: 4.562 min Scan# 570
 Delta R.T. -0.006 min
 Lab File: VX041953.D
 Acq: 20 Jun 2024 10:03

Tgt Ion: 43 Resp: 152298

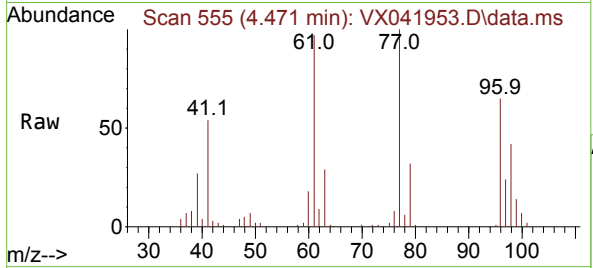
Ion	Ratio	Lower	Upper
43	100		
57	7.9	6.5	9.7
72	27.0	22.0	33.0



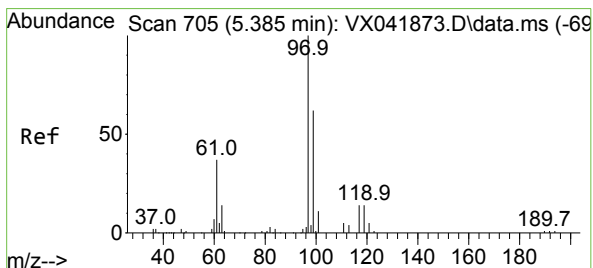
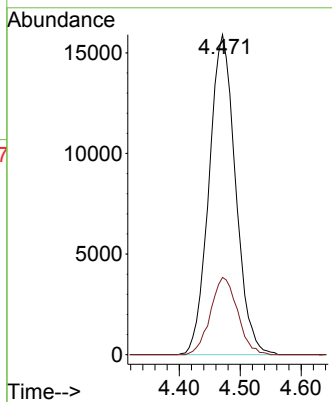
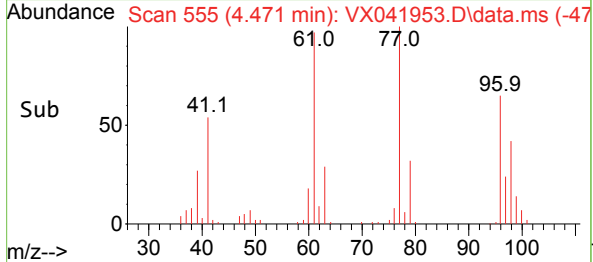


#31
 2,2-Dichloropropane
 Concen: 19.270 ug/l
 RT: 4.471 min Scan# 511
 Delta R.T. 0.000 min
 Lab File: VX041953.D
 Acq: 20 Jun 2024 10:03

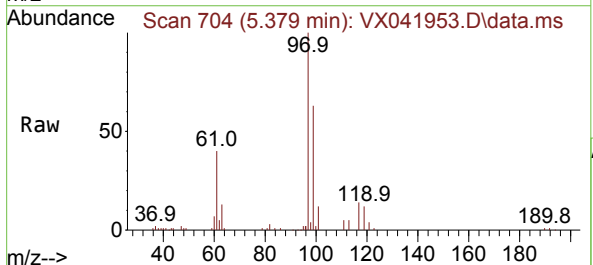
Instrument :
 MSVOA_X
 ClientSampleId :



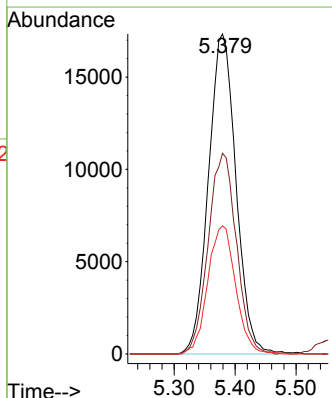
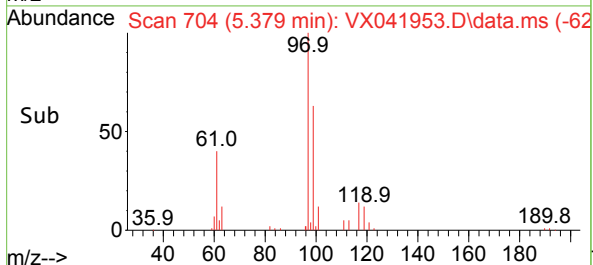
Tgt Ion: 77 Resp: 48046
 Ion Ratio Lower Upper
 77 100
 97 24.7 20.2 30.2

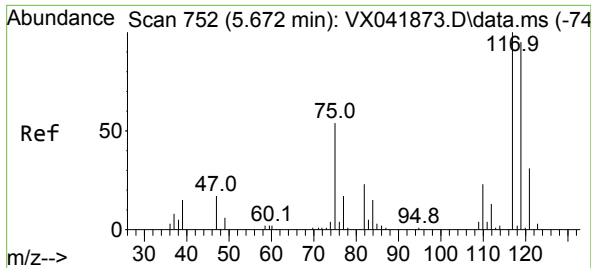


#32
 1,1,1-Trichloroethane
 Concen: 18.898 ug/l
 RT: 5.379 min Scan# 704
 Delta R.T. -0.006 min
 Lab File: VX041953.D
 Acq: 20 Jun 2024 10:03



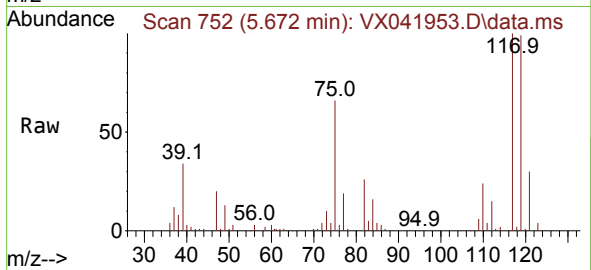
Tgt Ion: 97 Resp: 54509
 Ion Ratio Lower Upper
 97 100
 99 64.3 52.0 78.0
 61 40.4 31.7 47.5



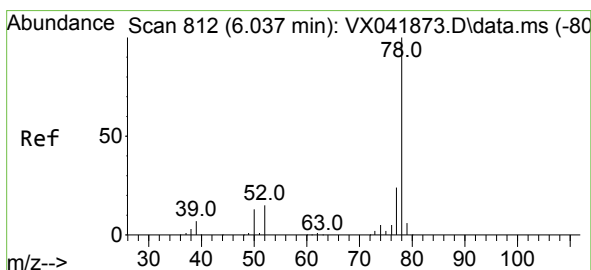
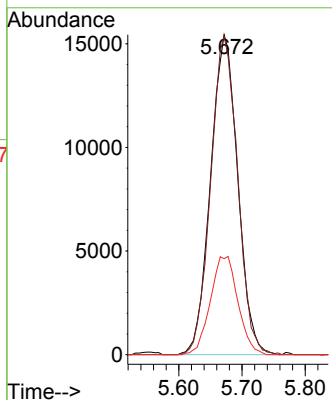
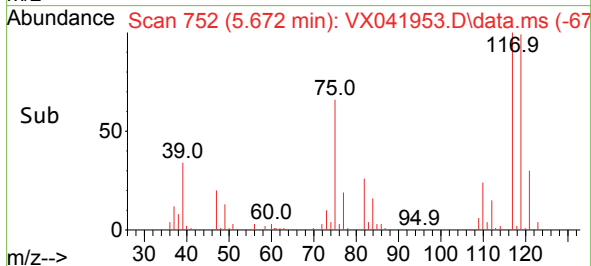


#33
 Carbon Tetrachloride
 Concen: 18.495 ug/l
 RT: 5.672 min Scan# 71
 Delta R.T. 0.000 min
 Lab File: VX041953.D
 Acq: 20 Jun 2024 10:03

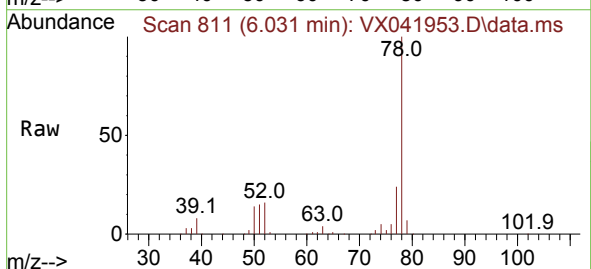
Instrument :
 MSVOA_X
 ClientSampleId :



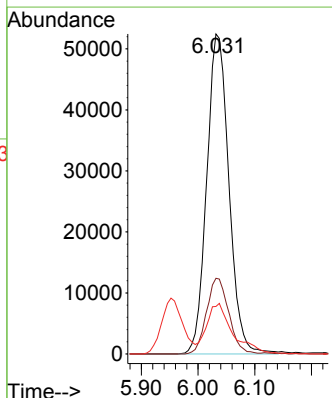
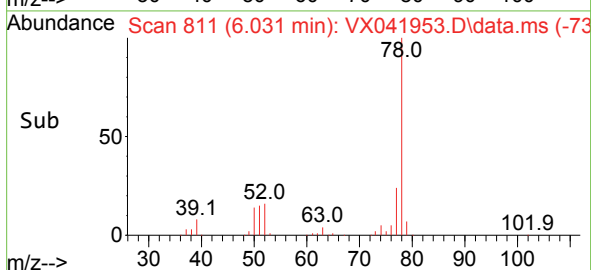
Tgt Ion:117 Resp: 46009
 Ion Ratio Lower Upper
 117 100
 119 99.4 75.7 113.5
 121 30.0 24.9 37.3

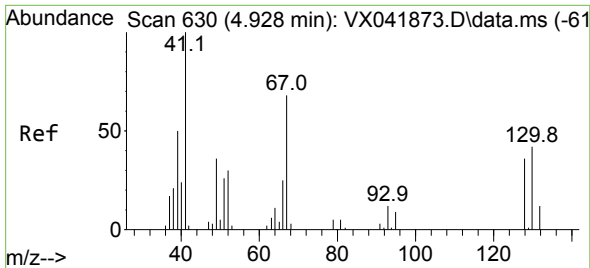


#34
 Benzene
 Concen: 18.834 ug/l
 RT: 6.031 min Scan# 811
 Delta R.T. -0.006 min
 Lab File: VX041953.D
 Acq: 20 Jun 2024 10:03



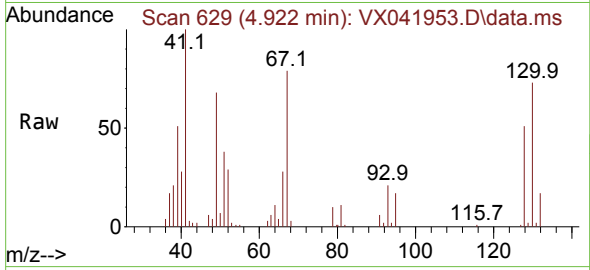
Tgt Ion: 78 Resp: 142762
 Ion Ratio Lower Upper
 78 100
 77 23.7 18.9 28.3
 51 14.6 11.8 17.8





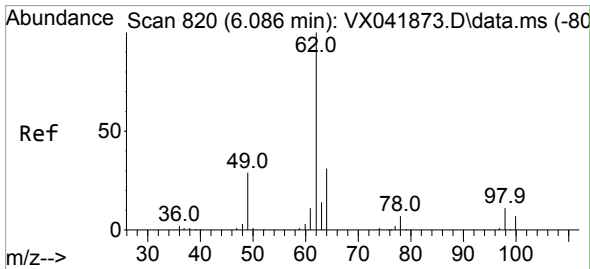
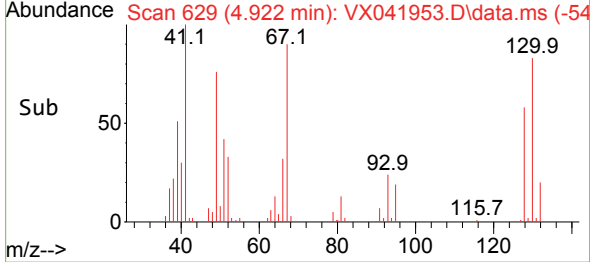
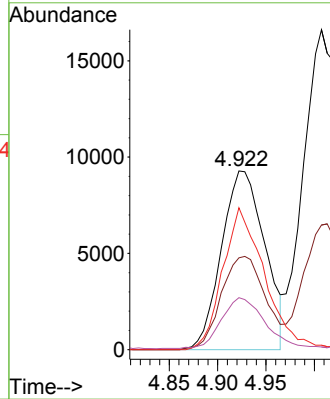
#35
 Methacrylonitrile
 Concen: 18.913 ug/l
 RT: 4.922 min Scan# 61
 Delta R.T. -0.006 min
 Lab File: VX041953.D
 Acq: 20 Jun 2024 10:03

Instrument :
 MSVOA_X
 ClientSampleId :



Tgt Ion: 41 Resp: 28882

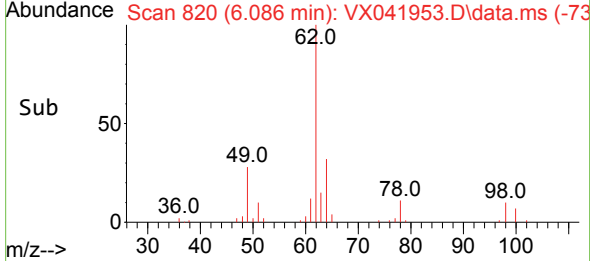
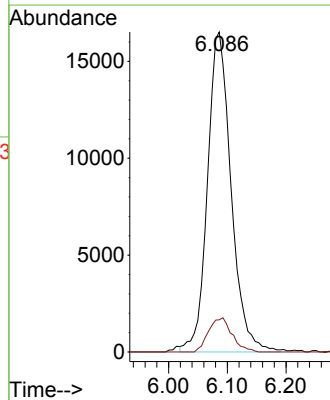
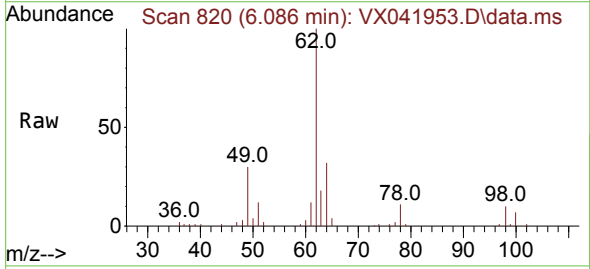
Ion	Ratio	Lower	Upper
41	100		
39	51.4	25.2	75.6
67	79.4	34.2	102.5
52	28.4	15.0	45.1

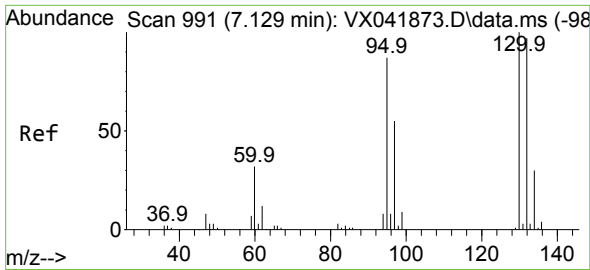


#36
 1,2-Dichloroethane
 Concen: 19.550 ug/l
 RT: 6.086 min Scan# 820
 Delta R.T. 0.000 min
 Lab File: VX041953.D
 Acq: 20 Jun 2024 10:03

Tgt Ion: 62 Resp: 46165

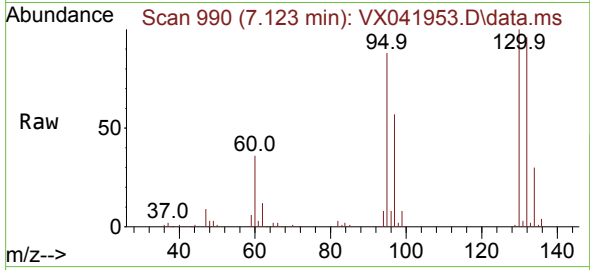
Ion	Ratio	Lower	Upper
62	100		
98	10.6	9.1	13.7



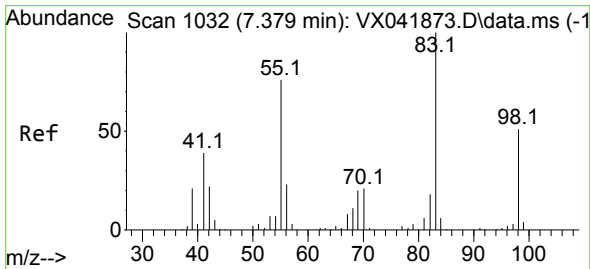
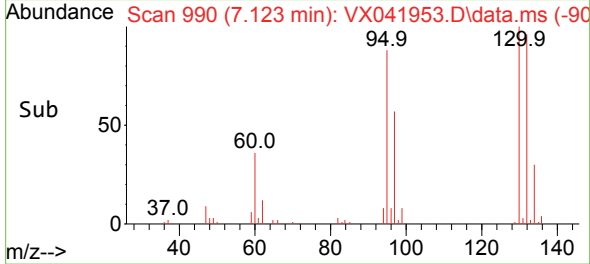
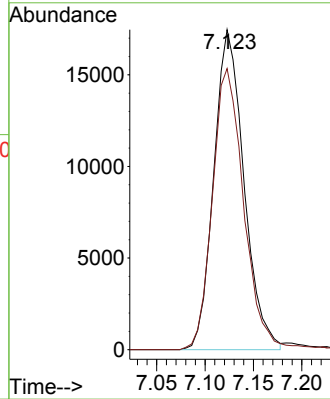


#37
 Trichloroethene
 Concen: 18.264 ug/l
 RT: 7.123 min Scan# 991
 Delta R.T. -0.006 min
 Lab File: VX041953.D
 Acq: 20 Jun 2024 10:03

Instrument : MSVOA_X
 ClientSampleId :

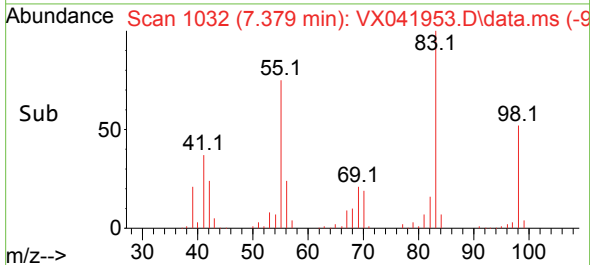
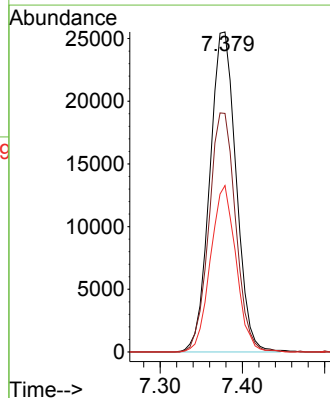
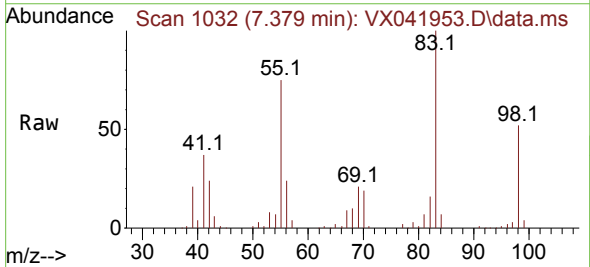


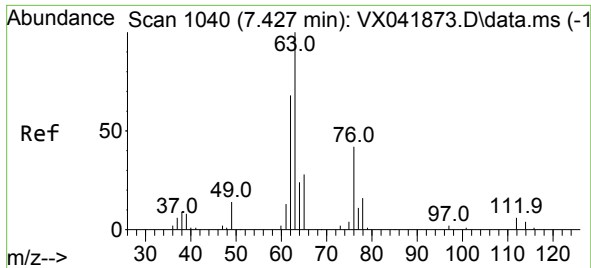
Tgt Ion:130 Resp: 37814
 Ion Ratio Lower Upper
 130 100
 95 87.9 69.4 104.0



#38
 Methylcyclohexane
 Concen: 18.859 ug/l
 RT: 7.379 min Scan# 1032
 Delta R.T. 0.000 min
 Lab File: VX041953.D
 Acq: 20 Jun 2024 10:03

Tgt Ion: 83 Resp: 56839
 Ion Ratio Lower Upper
 83 100
 55 75.6 37.3 111.9
 98 50.2 24.8 74.4

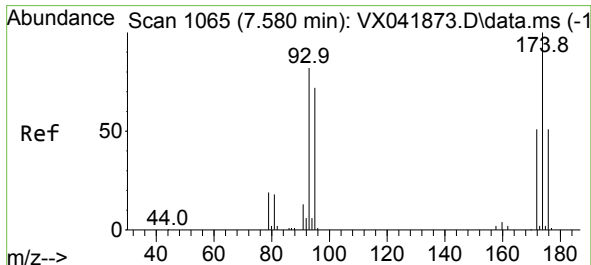
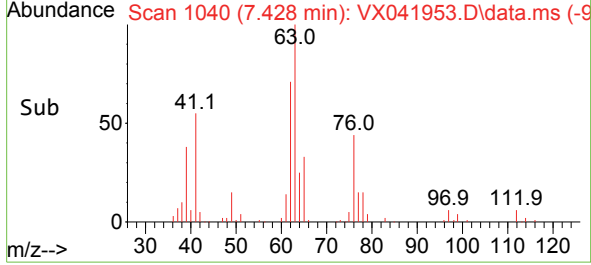
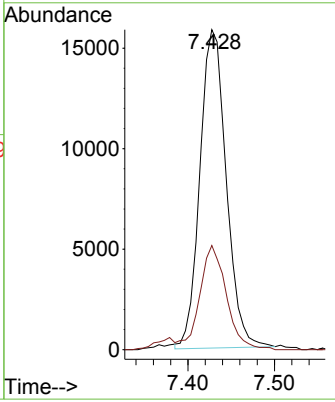
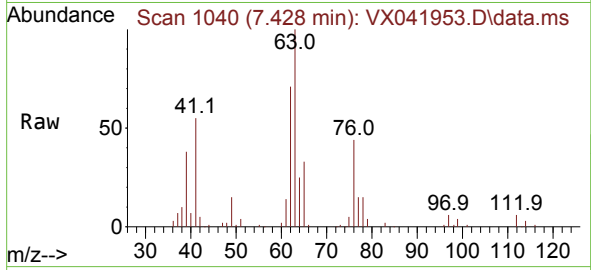




#39
 1,2-Dichloropropane
 Concen: 18.562 ug/l
 RT: 7.428 min Scan# 1040
 Delta R.T. 0.000 min
 Lab File: VX041953.D
 Acq: 20 Jun 2024 10:03

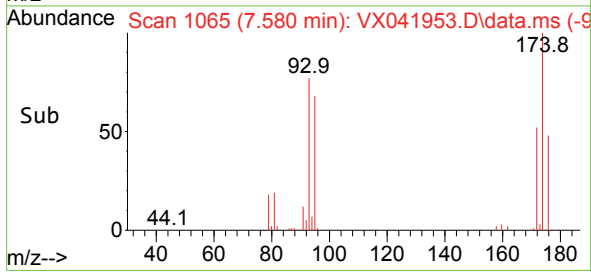
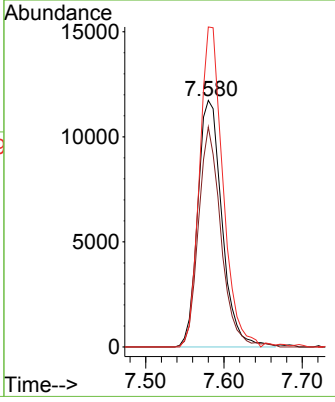
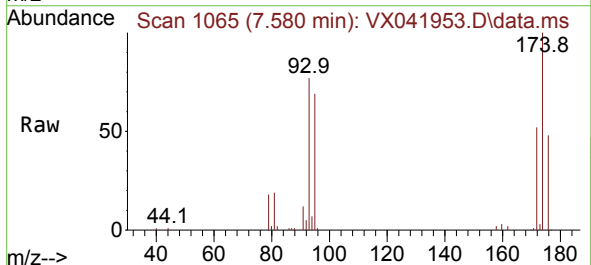
Instrument : MSVOA_X
 ClientSampleId :

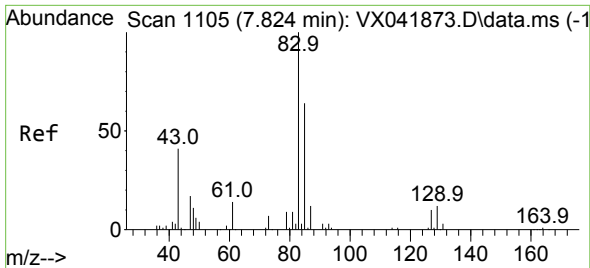
Tgt Ion: 63 Resp: 33516
 Ion Ratio Lower Upper
 63 100
 65 32.8 24.0 36.0



#40
 Dibromomethane
 Concen: 18.915 ug/l
 RT: 7.580 min Scan# 1065
 Delta R.T. 0.000 min
 Lab File: VX041953.D
 Acq: 20 Jun 2024 10:03

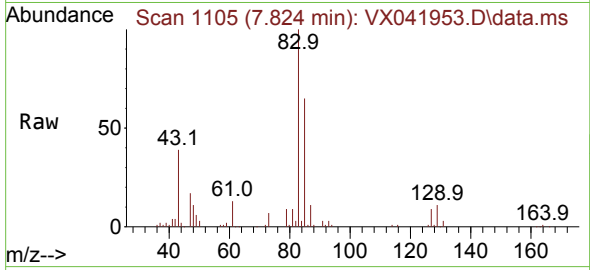
Tgt Ion: 93 Resp: 25265
 Ion Ratio Lower Upper
 93 100
 95 82.8 0.0 168.6
 174 124.6 0.0 255.0





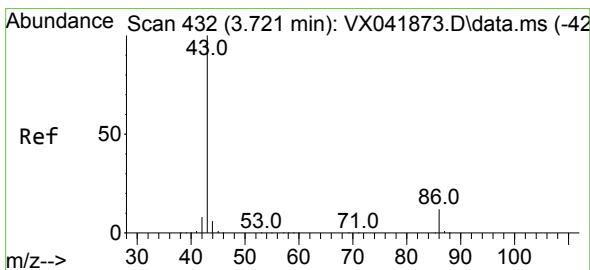
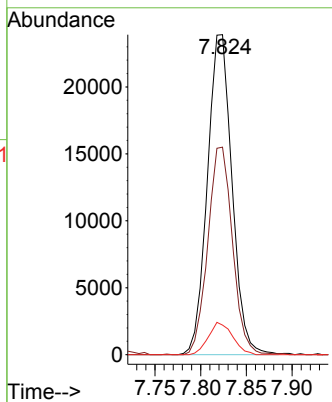
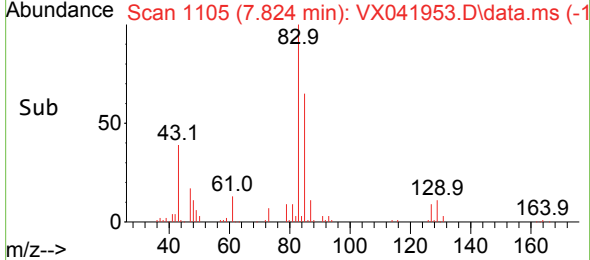
#41
 Bromodichloromethane
 Concen: 18.757 ug/l
 RT: 7.824 min Scan# 1105
 Delta R.T. 0.000 min
 Lab File: VX041953.D
 Acq: 20 Jun 2024 10:03

Instrument :
 MSVOA_X
 ClientSampleId :

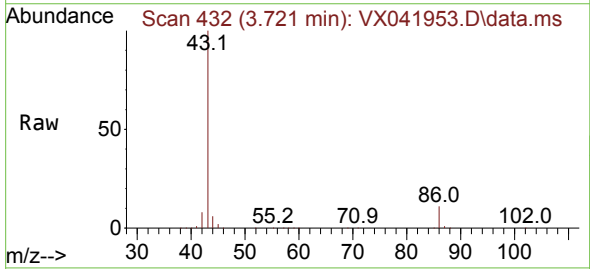


Tgt Ion: 83 Resp: 44884

Ion	Ratio	Lower	Upper
83	100		
85	64.9	51.1	76.7
127	9.3	8.1	12.1

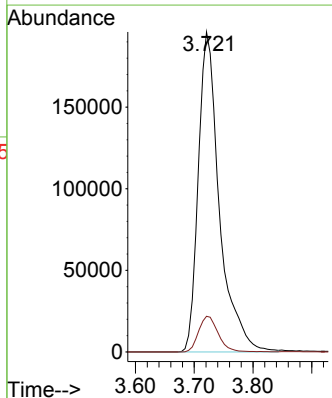
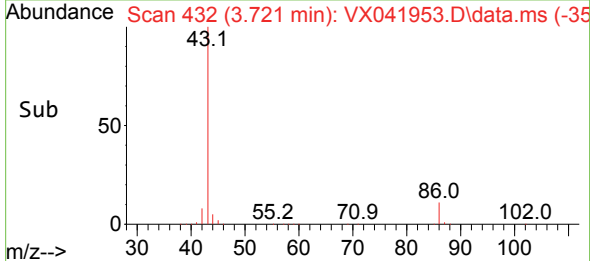


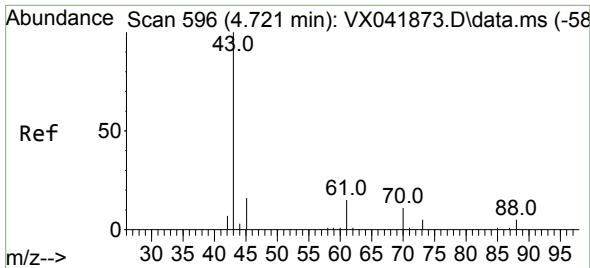
#42
 Vinyl Acetate
 Concen: 96.169 ug/l
 RT: 3.721 min Scan# 432
 Delta R.T. 0.000 min
 Lab File: VX041953.D
 Acq: 20 Jun 2024 10:03



Tgt Ion: 43 Resp: 489414

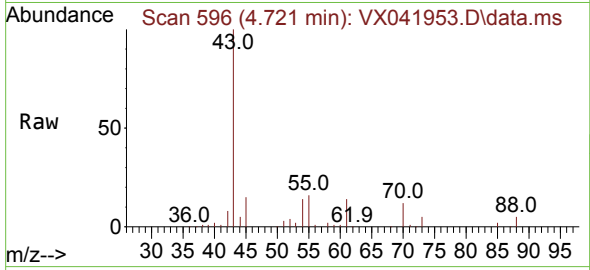
Ion	Ratio	Lower	Upper
43	100		
86	10.4	8.5	12.7



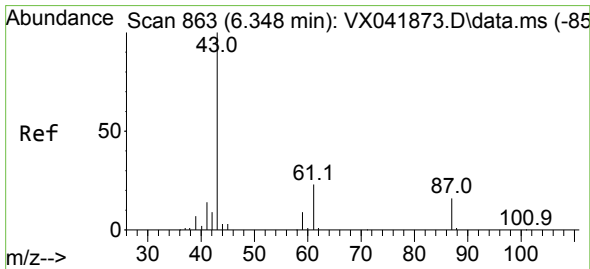
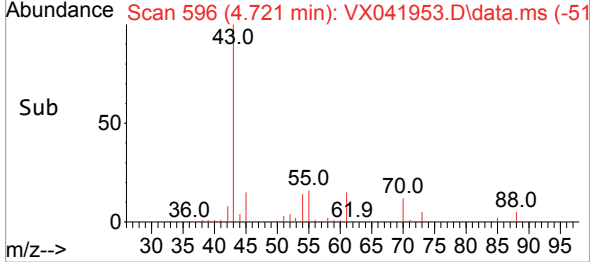
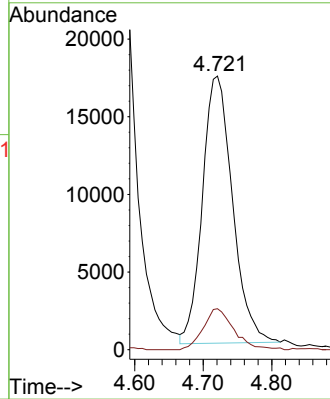


#43
 Ethyl Acetate
 Concen: 18.433 ug/l
 RT: 4.721 min Scan# 596
 Delta R.T. 0.000 min
 Lab File: VX041953.D
 Acq: 20 Jun 2024 10:03

Instrument : MSVOA_X
 ClientSampleId :

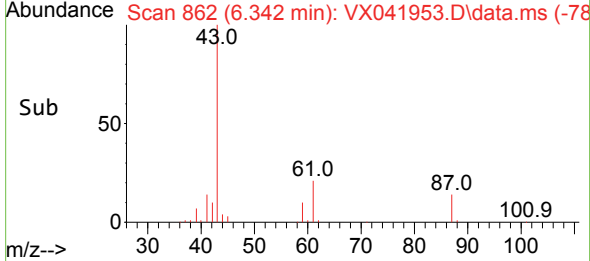
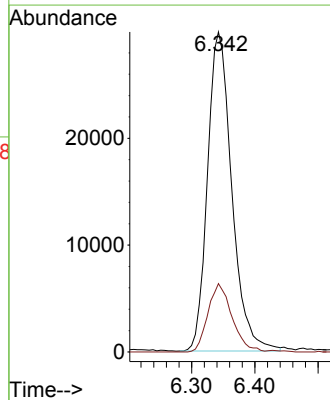
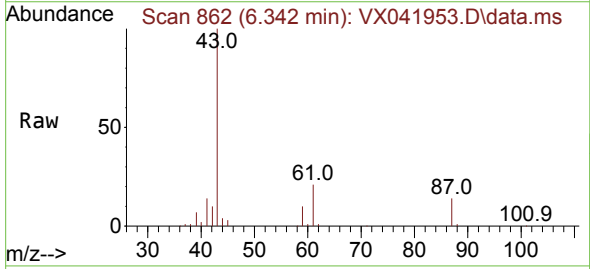


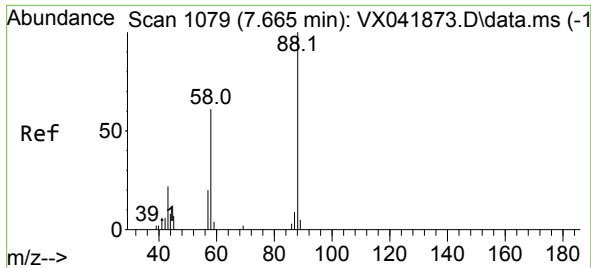
Tgt Ion: 43 Resp: 52548
 Ion Ratio Lower Upper
 43 100
 45 15.5 12.4 18.6



#44
 Isopropyl Acetate
 Concen: 18.667 ug/l
 RT: 6.342 min Scan# 862
 Delta R.T. -0.006 min
 Lab File: VX041953.D
 Acq: 20 Jun 2024 10:03

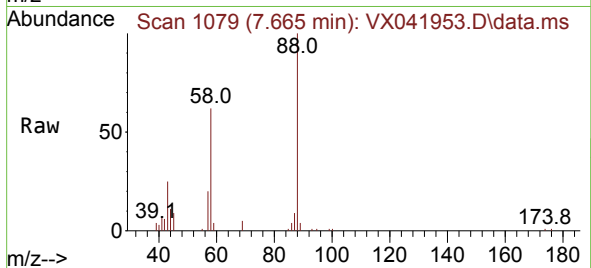
Tgt Ion: 43 Resp: 79703
 Ion Ratio Lower Upper
 43 100
 61 20.9 17.4 26.0





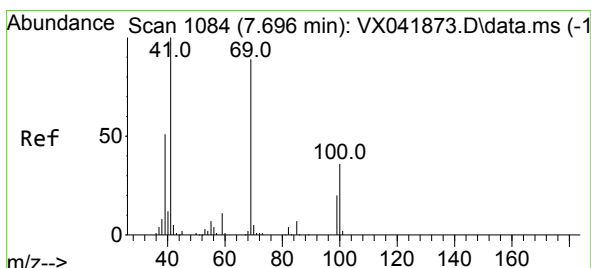
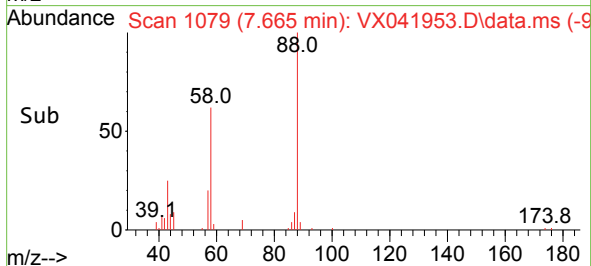
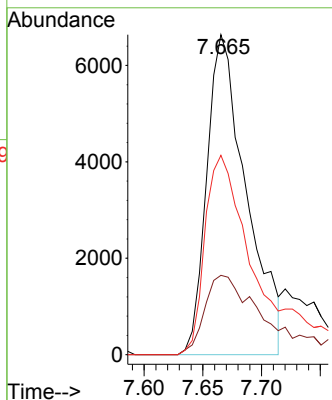
#45
 1,4-Dioxane
 Concen: 300.005 ug/l
 RT: 7.665 min Scan# 1079
 Delta R.T. 0.000 min
 Lab File: VX041953.D
 Acq: 20 Jun 2024 10:03

Instrument : MSVOA_X
 ClientSampleId :



Tgt Ion: 88 Resp: 15614

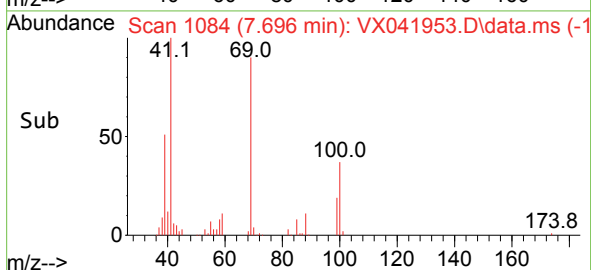
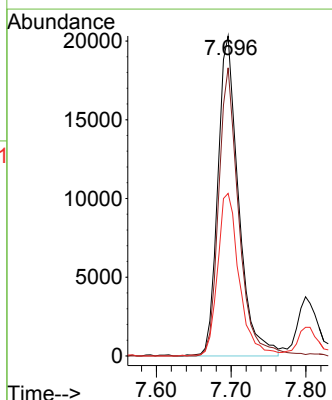
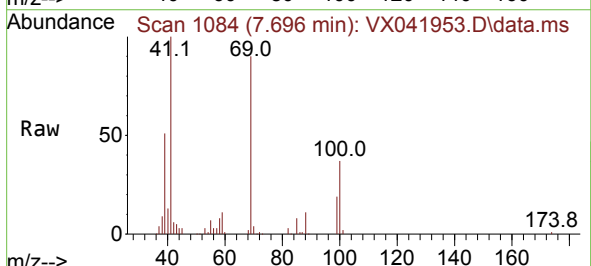
Ion	Ratio	Lower	Upper
88	100		
43	33.1	23.2	34.8
58	67.4	52.6	78.8

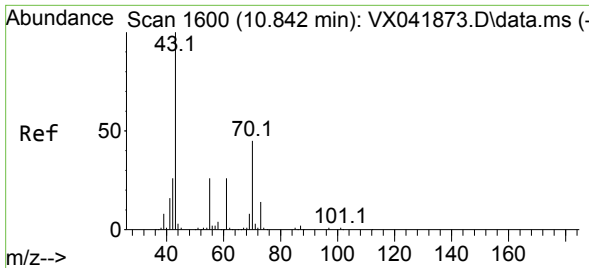


#46
 Methyl methacrylate
 Concen: 18.788 ug/l
 RT: 7.696 min Scan# 1084
 Delta R.T. 0.000 min
 Lab File: VX041953.D
 Acq: 20 Jun 2024 10:03

Tgt Ion: 41 Resp: 39222

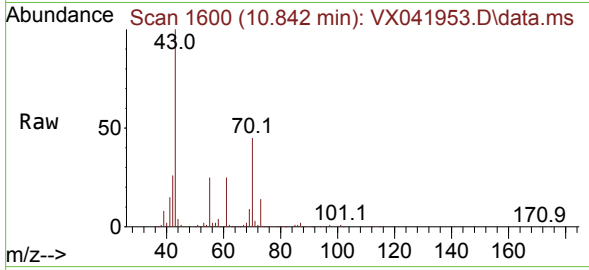
Ion	Ratio	Lower	Upper
41	100		
69	90.0	44.4	133.1
39	50.8	25.5	76.5



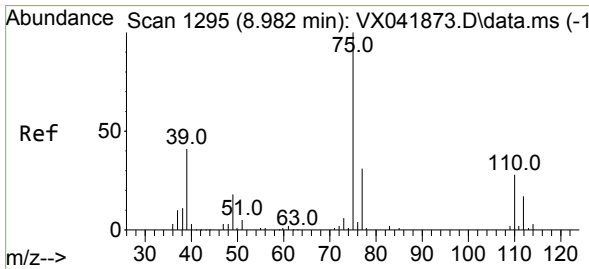
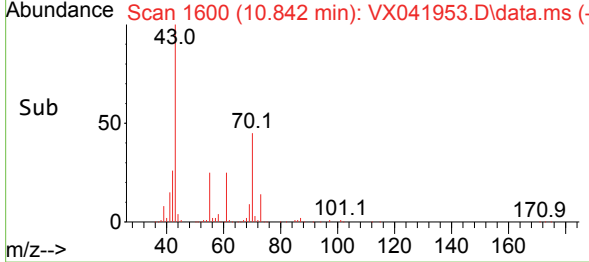
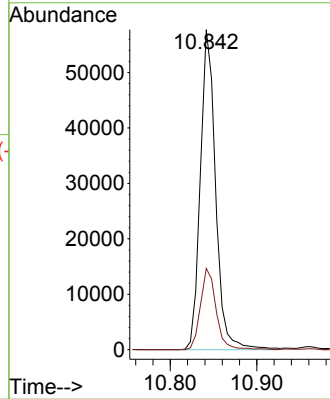


#47
 n-amy1 Acetate
 Concen: 18.494 ug/l
 RT: 10.842 min Scan# 1600
 Delta R.T. 0.000 min
 Lab File: VX041953.D
 Acq: 20 Jun 2024 10:03

Instrument : MSVOA_X
 ClientSampleId :

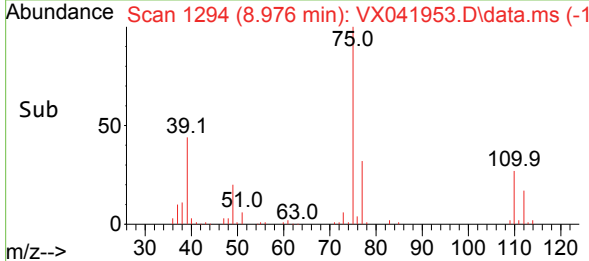
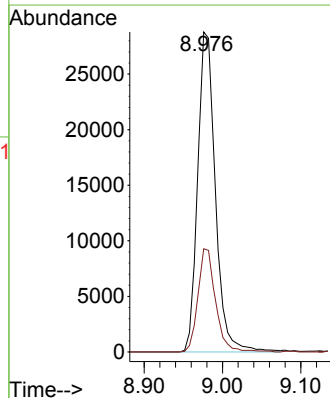
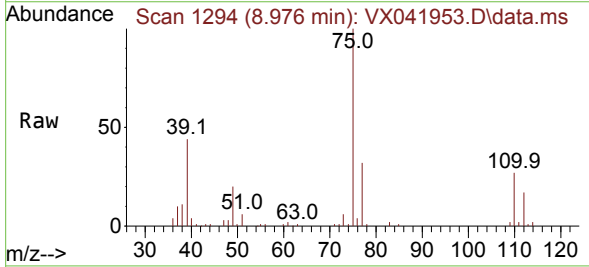


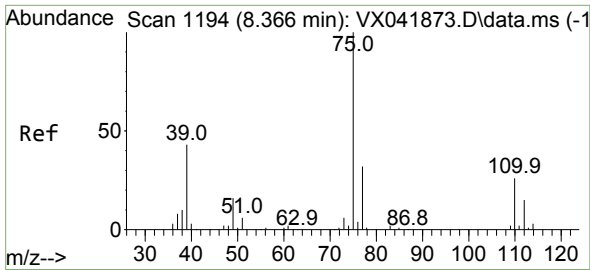
Tgt Ion: 43 Resp: 70869
 Ion Ratio Lower Upper
 43 100
 55 25.6 21.0 31.4



#48
 t-1,3-Dichloropropene
 Concen: 18.415 ug/l
 RT: 8.976 min Scan# 1294
 Delta R.T. -0.006 min
 Lab File: VX041953.D
 Acq: 20 Jun 2024 10:03

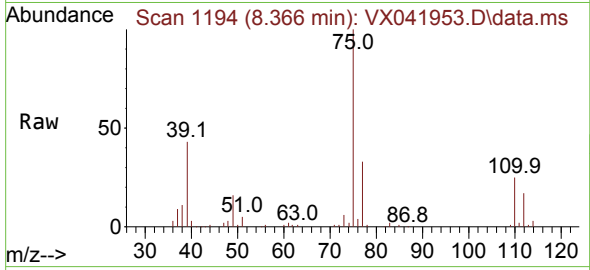
Tgt Ion: 75 Resp: 45369
 Ion Ratio Lower Upper
 75 100
 77 32.2 25.1 37.7



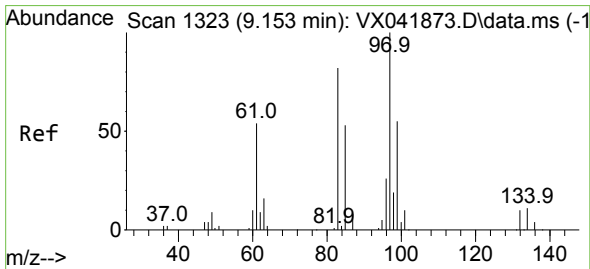
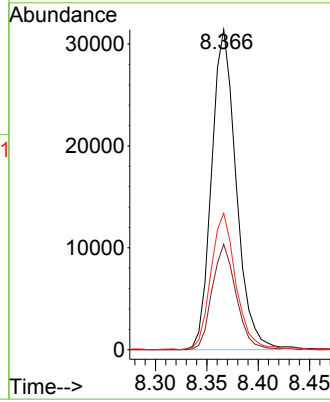
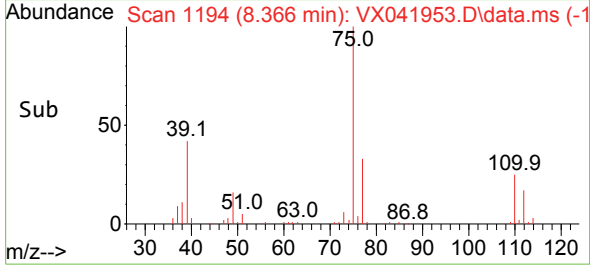


#49
 cis-1,3-Dichloropropene
 Concen: 18.920 ug/l
 RT: 8.366 min Scan# 1194
 Delta R.T. 0.000 min
 Lab File: VX041953.D
 Acq: 20 Jun 2024 10:03

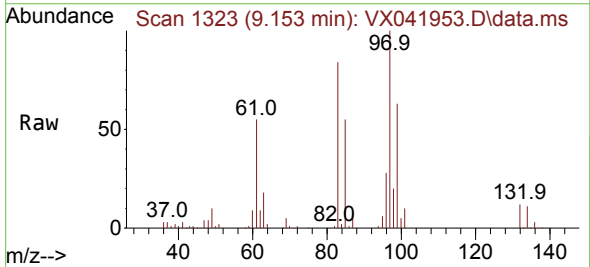
Instrument : MSVOA_X
 ClientSampleId :



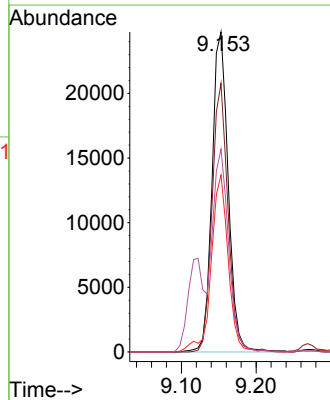
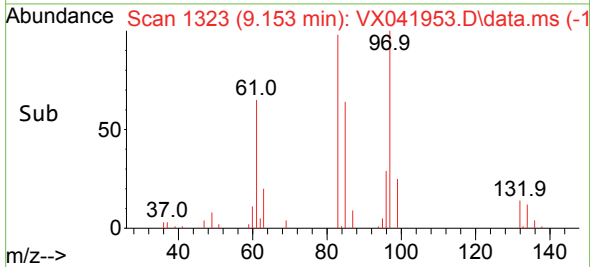
Tgt Ion: 75 Resp: 52287
 Ion Ratio Lower Upper
 75 100
 77 32.9 25.8 38.8
 39 42.6 34.8 52.2

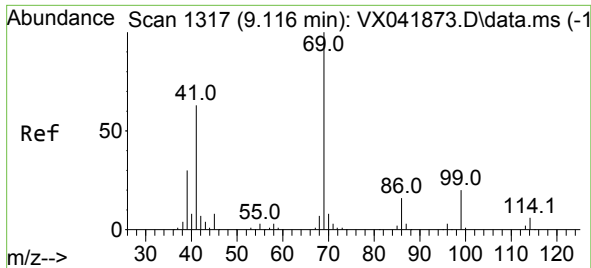


#50
 1,1,2-Trichloroethane
 Concen: 19.189 ug/l
 RT: 9.153 min Scan# 1323
 Delta R.T. 0.000 min
 Lab File: VX041953.D
 Acq: 20 Jun 2024 10:03



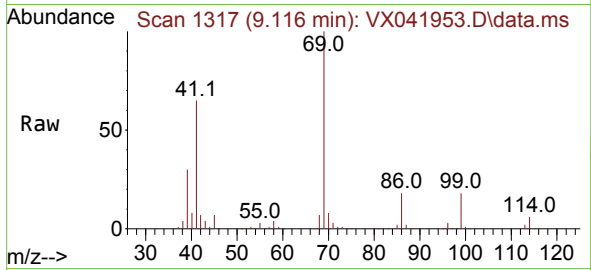
Tgt Ion: 97 Resp: 37268
 Ion Ratio Lower Upper
 97 100
 83 83.9 65.9 98.9
 85 55.3 42.9 64.3
 99 63.4 48.8 73.2



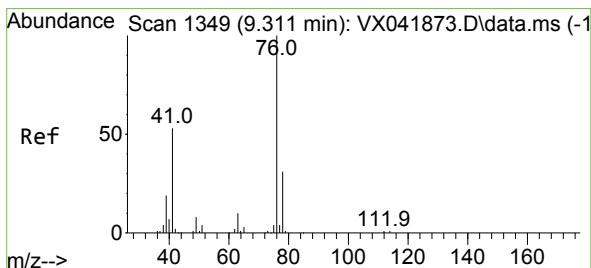
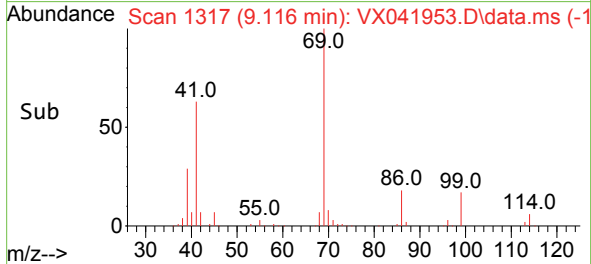
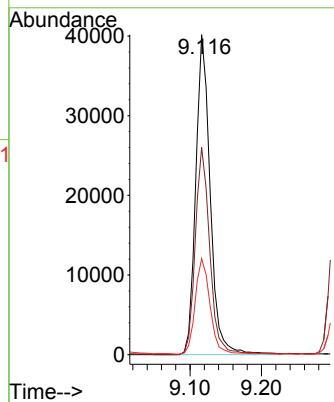


#51
 Ethyl methacrylate
 Concen: 18.338 ug/l
 RT: 9.116 min Scan# 11
 Delta R.T. 0.000 min
 Lab File: VX041953.D
 Acq: 20 Jun 2024 10:03

Instrument :
 MSVOA_X
 ClientSampleId :

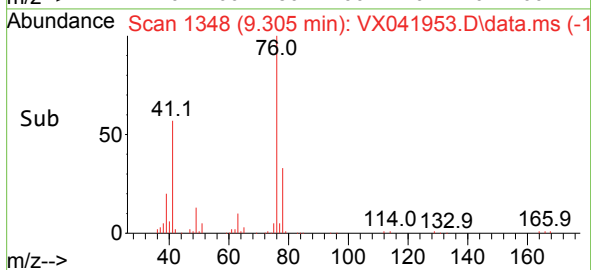
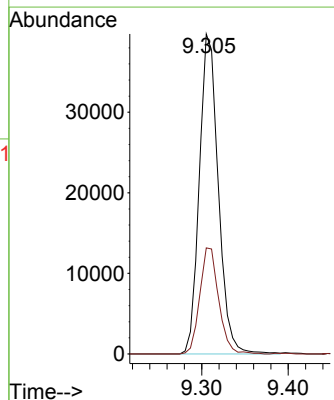
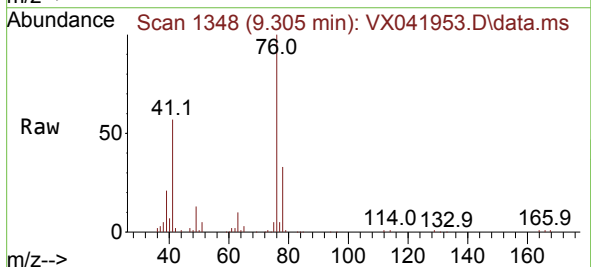


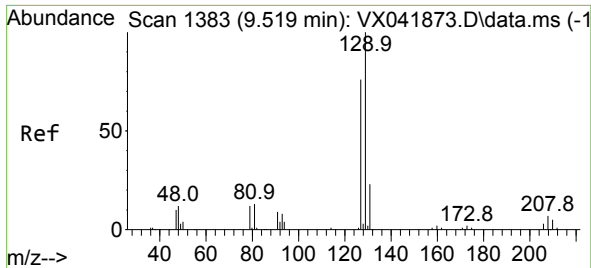
Tgt Ion: 69 Resp: 56579
 Ion Ratio Lower Upper
 69 100
 41 64.6 31.6 94.7
 39 29.9 15.3 45.8



#52
 1,3-Dichloropropane
 Concen: 19.042 ug/l
 RT: 9.305 min Scan# 1348
 Delta R.T. -0.006 min
 Lab File: VX041953.D
 Acq: 20 Jun 2024 10:03

Tgt Ion: 76 Resp: 60462
 Ion Ratio Lower Upper
 76 100
 78 32.7 0.0 66.0

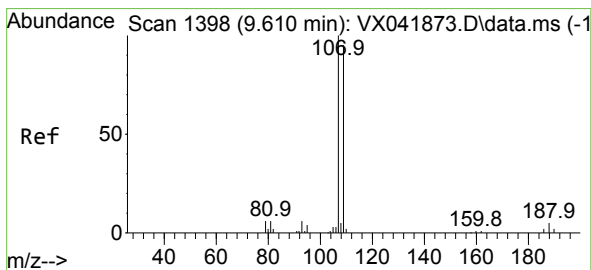
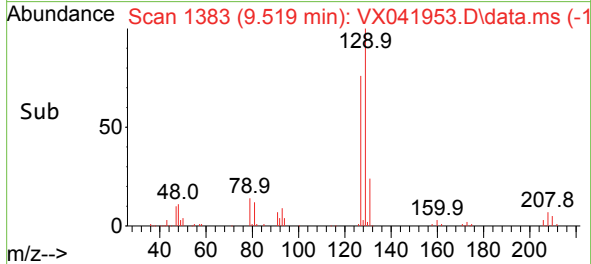
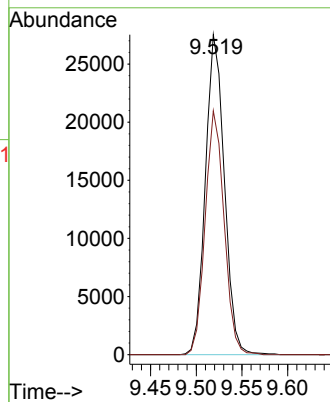
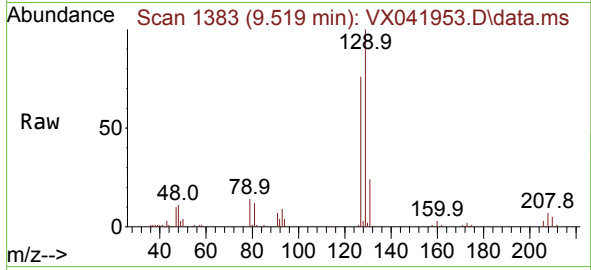




#53
 Dibromochloromethane
 Concen: 18.669 ug/l
 RT: 9.519 min Scan# 1383
 Delta R.T. 0.000 min
 Lab File: VX041953.D
 Acq: 20 Jun 2024 10:03

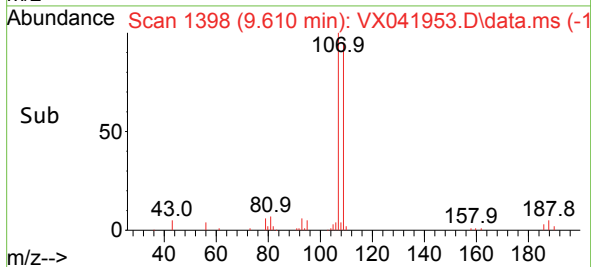
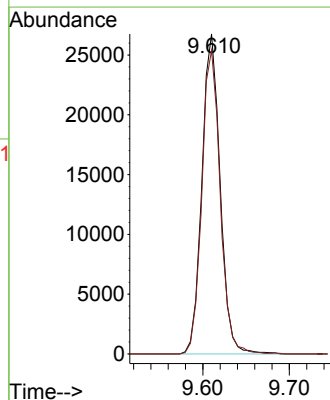
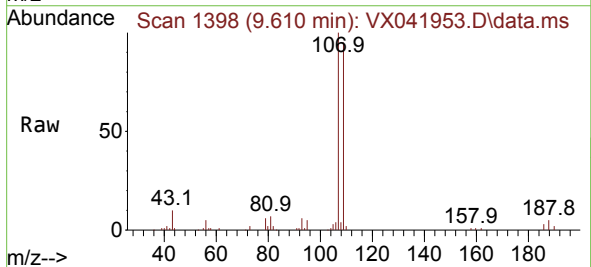
Instrument : MSVOA_X
 ClientSampleId :

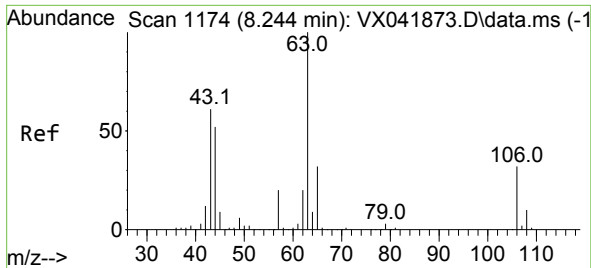
Tgt Ion:129 Resp: 39678
 Ion Ratio Lower Upper
 129 100
 127 75.8 38.8 116.4



#54
 1,2-Dibromoethane
 Concen: 19.129 ug/l
 RT: 9.610 min Scan# 1398
 Delta R.T. 0.000 min
 Lab File: VX041953.D
 Acq: 20 Jun 2024 10:03

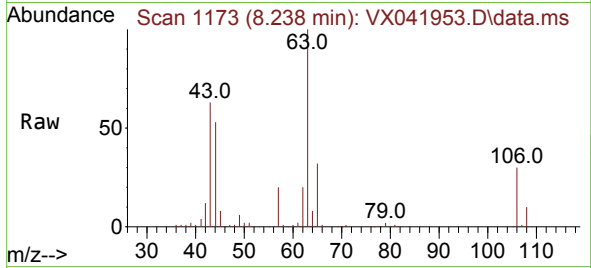
Tgt Ion:107 Resp: 39178
 Ion Ratio Lower Upper
 107 100
 109 95.3 75.7 113.5





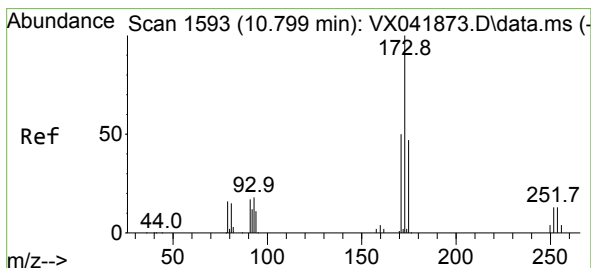
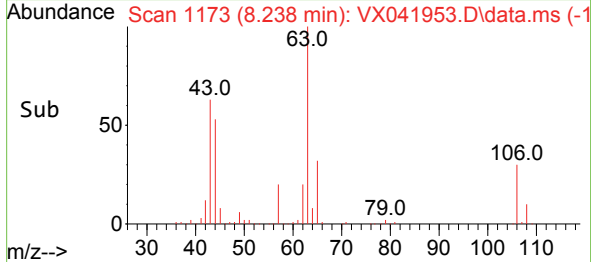
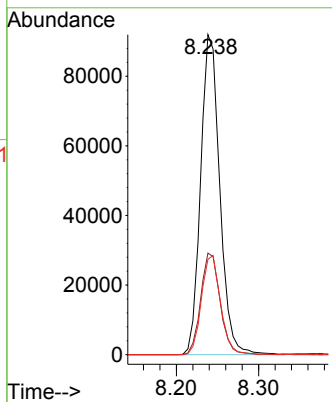
#55
 2-Chloroethyl vinyl ether
 Concen: 103.505 ug/l
 RT: 8.238 min Scan# 1173
 Delta R.T. -0.006 min
 Lab File: VX041953.D
 Acq: 20 Jun 2024 10:03

Instrument : MSVOA_X
 ClientSampleId :



Tgt Ion: 63 Resp: 148641

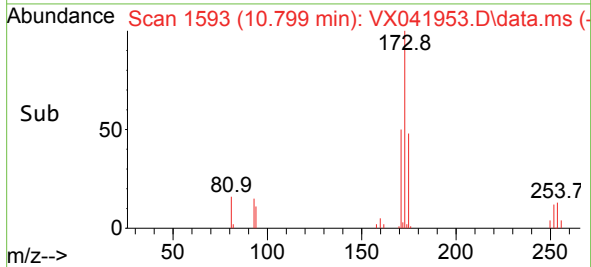
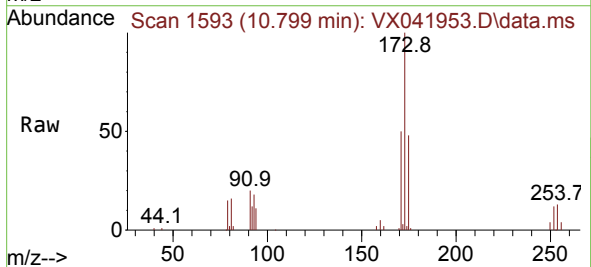
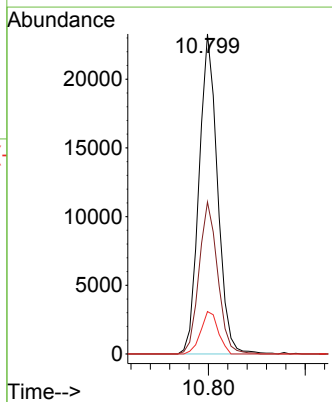
Ion	Ratio	Lower	Upper
63	100		
65	32.0	25.7	38.5
106	30.9	25.3	37.9

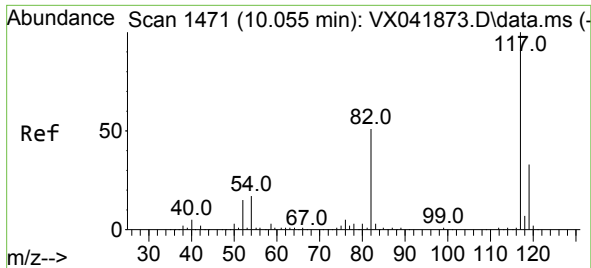


#56
 Bromoform
 Concen: 17.866 ug/l
 RT: 10.799 min Scan# 1593
 Delta R.T. 0.000 min
 Lab File: VX041953.D
 Acq: 20 Jun 2024 10:03

Tgt Ion: 173 Resp: 30964

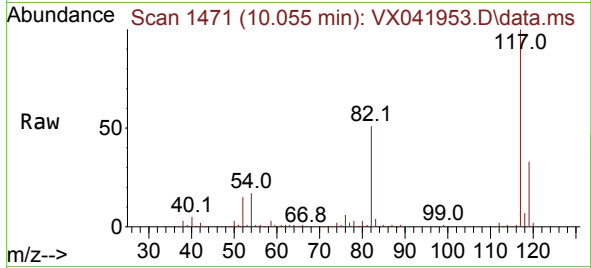
Ion	Ratio	Lower	Upper
173	100		
175	47.8	39.3	58.9
254	12.5	9.6	14.4



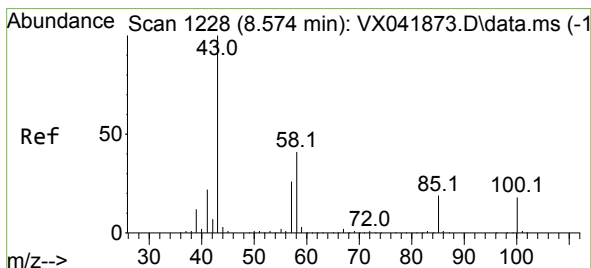
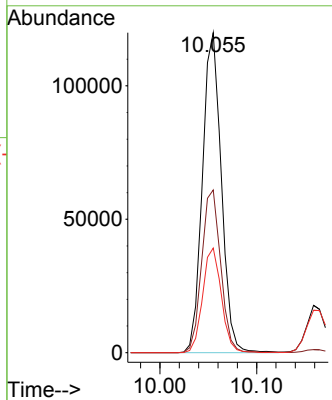
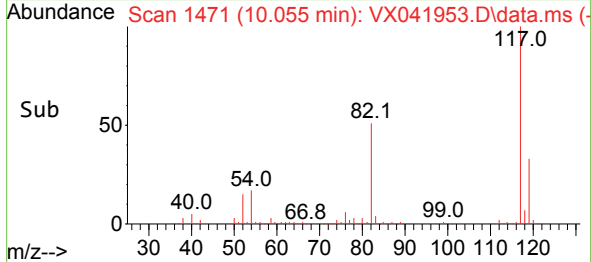


#57
 Chlorobenzene-d5
 Concen: 30.000 ug/l
 RT: 10.055 min Scan# 14
 Delta R.T. 0.000 min
 Lab File: VX041953.D
 Acq: 20 Jun 2024 10:03

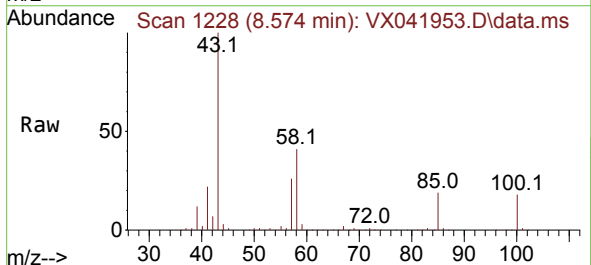
Instrument :
 MSVOA_X
 ClientSampleId :



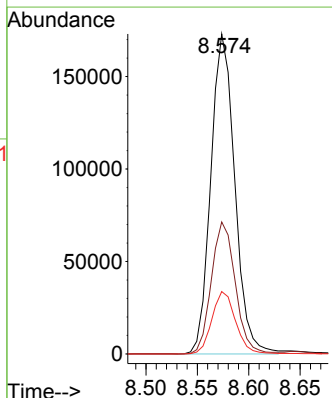
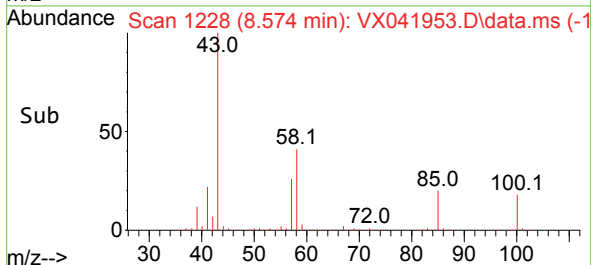
Tgt Ion:117 Resp: 163252
 Ion Ratio Lower Upper
 117 100
 82 51.0 41.1 61.7
 119 32.4 26.1 39.1

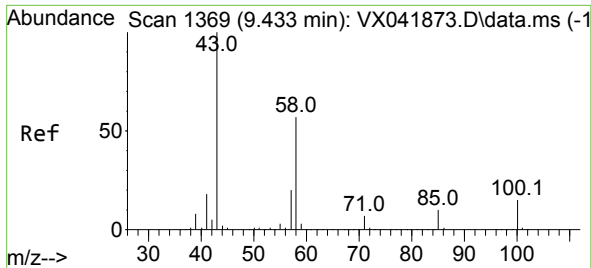


#58
 4-Methyl-2-Pentanone
 Concen: 95.845 ug/l
 RT: 8.574 min Scan# 1228
 Delta R.T. 0.000 min
 Lab File: VX041953.D
 Acq: 20 Jun 2024 10:03



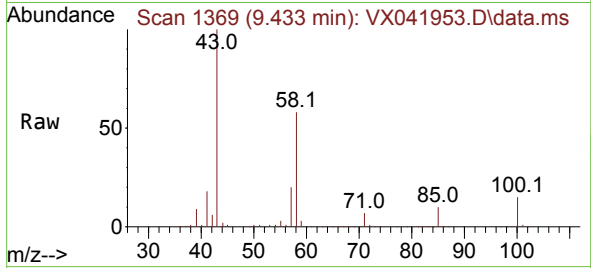
Tgt Ion: 43 Resp: 280380
 Ion Ratio Lower Upper
 43 100
 58 41.1 33.2 49.8
 85 19.3 15.5 23.3



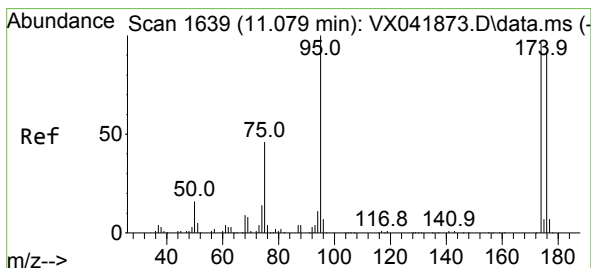
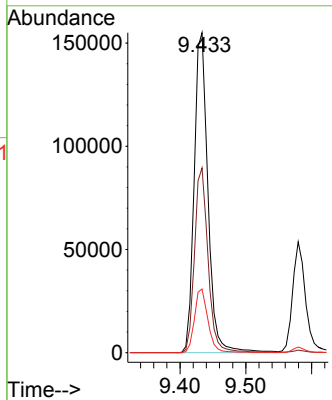
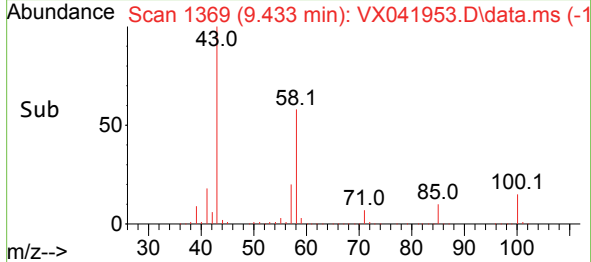


#59
 2-Hexanone
 Concen: 99.897 ug/l
 RT: 9.433 min Scan# 1369
 Delta R.T. 0.000 min
 Lab File: VX041953.D
 Acq: 20 Jun 2024 10:03

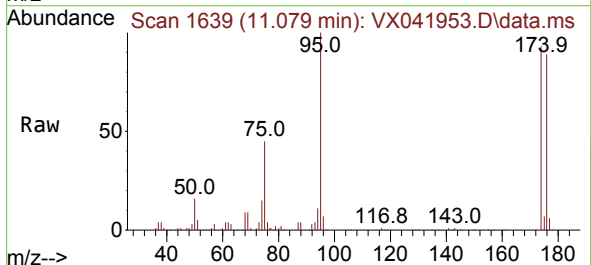
Instrument : MSVOA_X
 ClientSampleId :



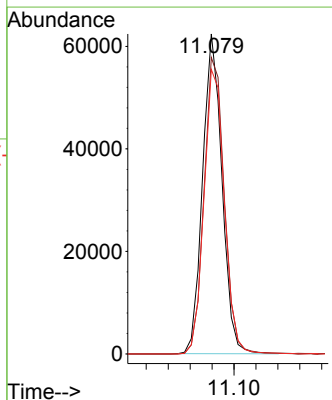
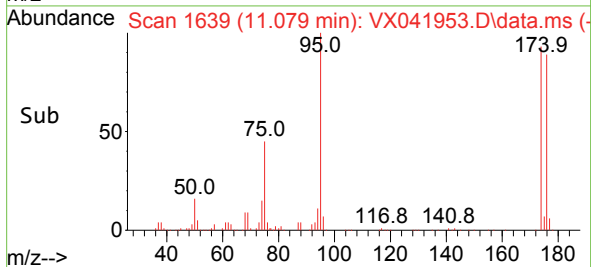
Tgt Ion: 43 Resp: 225556
 Ion Ratio Lower Upper
 43 100
 58 56.8 46.0 69.0
 57 19.6 15.8 23.6

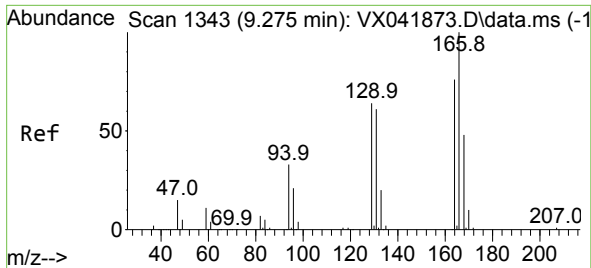


#60
 4-Bromofluorobenzene
 Concen: 30.225 ug/l
 RT: 11.079 min Scan# 1639
 Delta R.T. 0.000 min
 Lab File: VX041953.D
 Acq: 20 Jun 2024 10:03



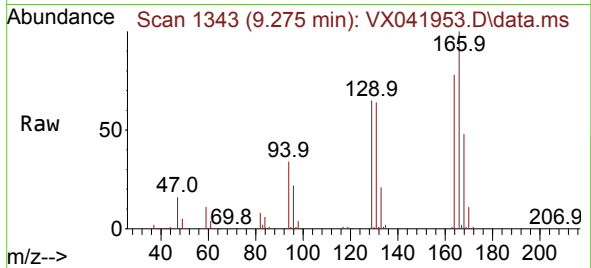
Tgt Ion: 95 Resp: 76379
 Ion Ratio Lower Upper
 95 100
 174 96.8 78.9 118.3
 176 93.7 77.1 115.7



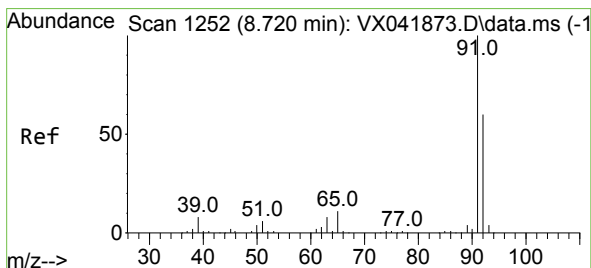
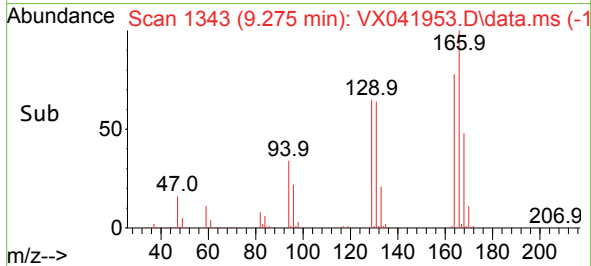
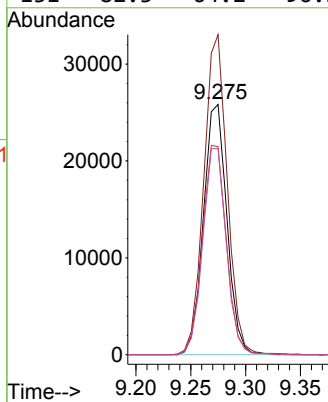


#61
 Tetrachloroethene
 Concen: 18.747 ug/l
 RT: 9.275 min Scan# 11
 Delta R.T. 0.000 min
 Lab File: VX041953.D
 Acq: 20 Jun 2024 10:03

Instrument :
 MSVOA_X
 ClientSampleId :

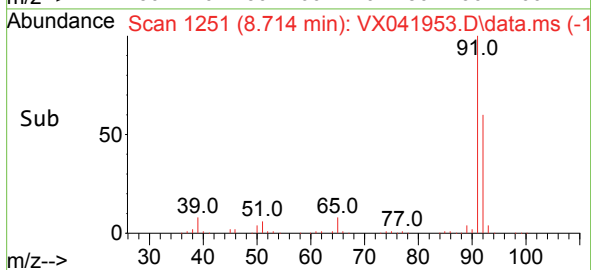
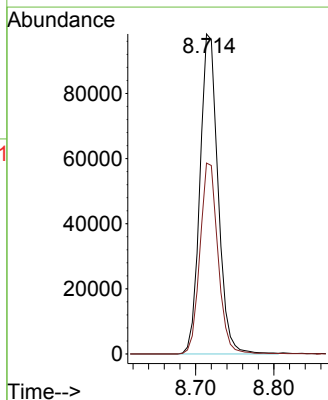
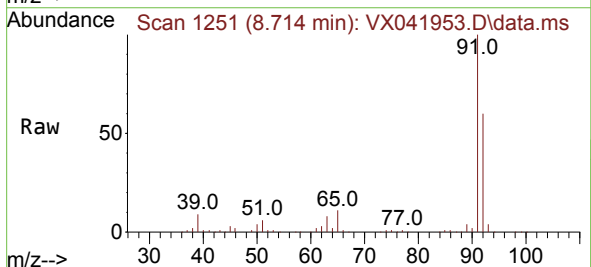


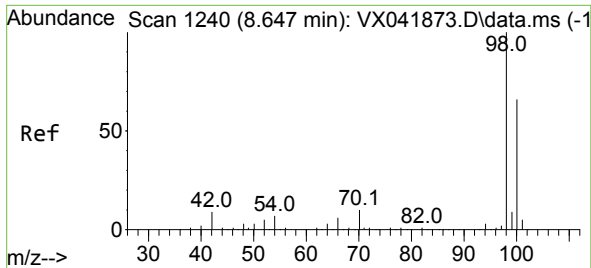
Tgt Ion:164 Resp: 38512
 Ion Ratio Lower Upper
 164 100
 166 127.6 105.0 157.6
 129 83.2 67.1 100.7
 131 82.3 64.2 96.2



#62
 Toluene
 Concen: 19.024 ug/l
 RT: 8.714 min Scan# 1251
 Delta R.T. -0.006 min
 Lab File: VX041953.D
 Acq: 20 Jun 2024 10:03

Tgt Ion: 91 Resp: 157163
 Ion Ratio Lower Upper
 91 100
 92 59.3 47.4 71.2

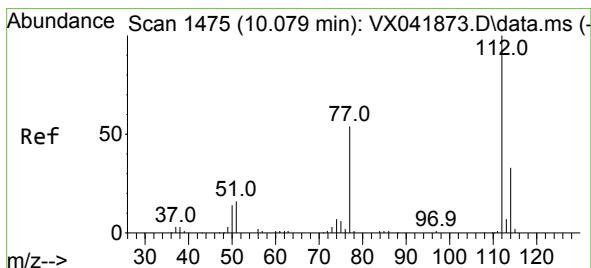
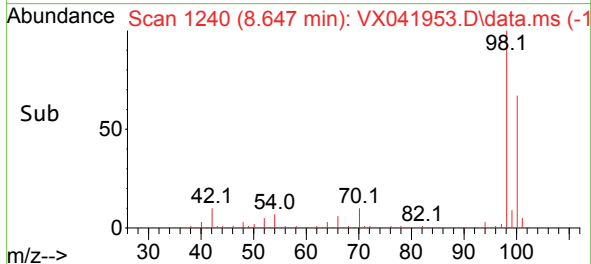
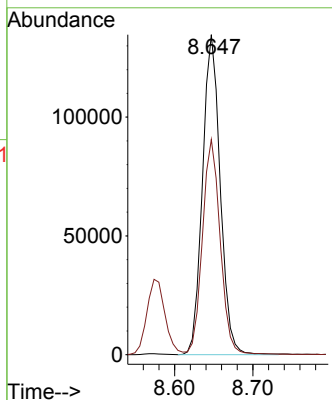
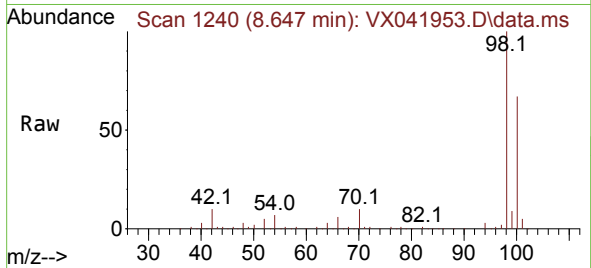




#63
 Toluene-d8
 Concen: 30.256 ug/l
 RT: 8.647 min Scan# 11
 Delta R.T. 0.000 min
 Lab File: VX041953.D
 Acq: 20 Jun 2024 10:03

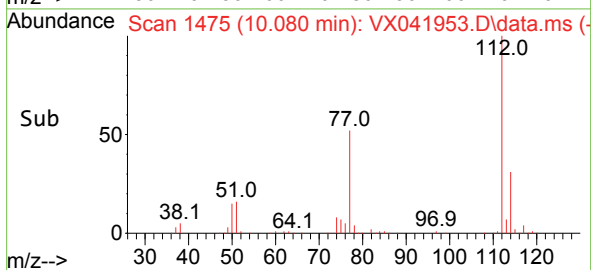
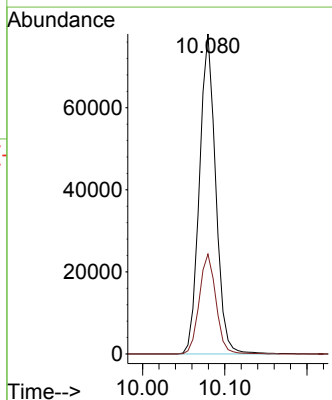
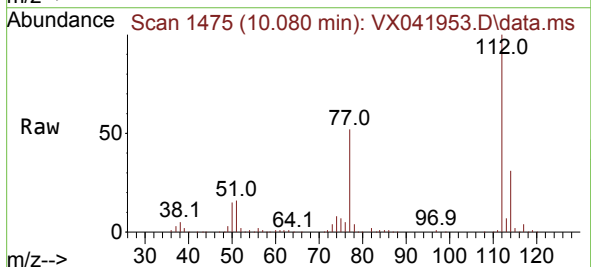
Instrument :
 MSVOA_X
 ClientSampleId :

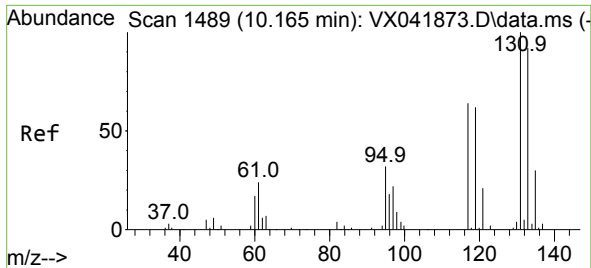
Tgt Ion: 98 Resp: 211320
 Ion Ratio Lower Upper
 98 100
 100 67.6 52.7 79.1



#64
 Chlorobenzene
 Concen: 19.037 ug/l
 RT: 10.080 min Scan# 1475
 Delta R.T. 0.000 min
 Lab File: VX041953.D
 Acq: 20 Jun 2024 10:03

Tgt Ion: 112 Resp: 107094
 Ion Ratio Lower Upper
 112 100
 114 31.2 26.2 39.4



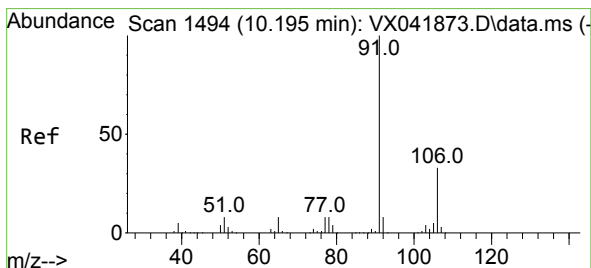
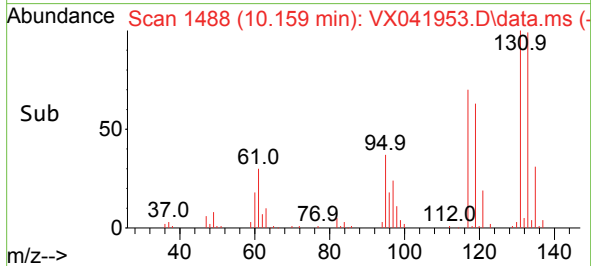
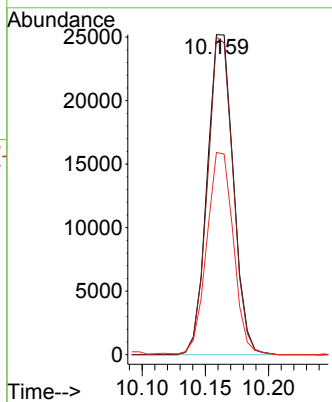
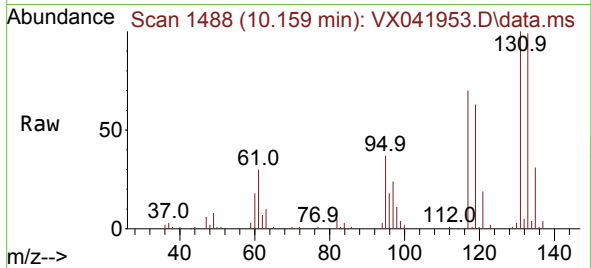


#65
 1,1,1,2-Tetrachloroethane
 Concen: 18.620 ug/l
 RT: 10.159 min Scan# 1488
 Delta R.T. -0.006 min
 Lab File: VX041953.D
 Acq: 20 Jun 2024 10:03

Instrument : MSVOA_X
 ClientSampleId :

Tgt Ion:131 Resp: 36175

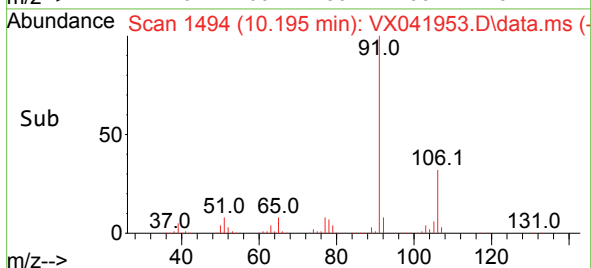
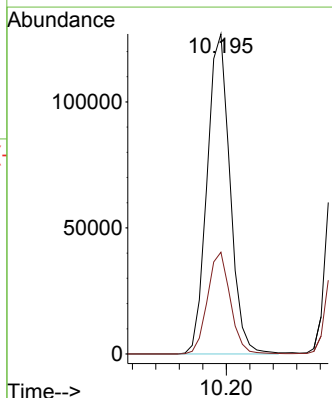
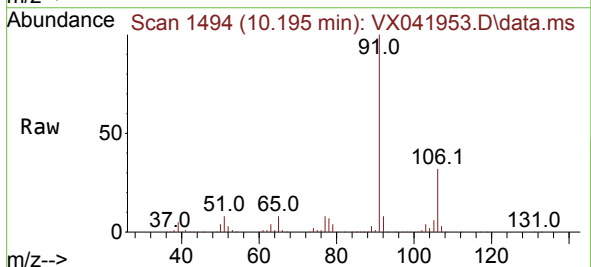
Ion	Ratio	Lower	Upper
131	100		
133	97.3	0.0	194.8
119	64.3	0.0	127.6

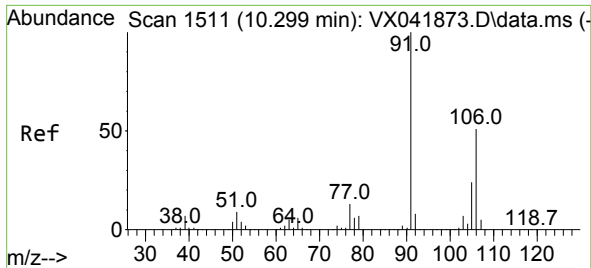


#66
 Ethyl Benzene
 Concen: 18.992 ug/l
 RT: 10.195 min Scan# 1494
 Delta R.T. 0.000 min
 Lab File: VX041953.D
 Acq: 20 Jun 2024 10:03

Tgt Ion: 91 Resp: 171534

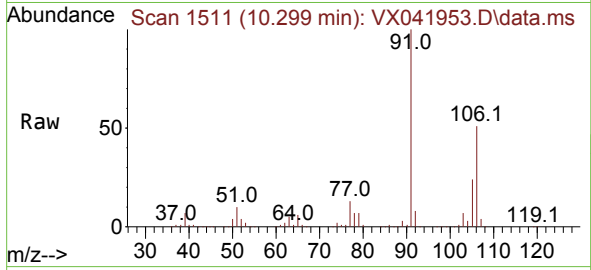
Ion	Ratio	Lower	Upper
91	100		
106	31.8	26.4	39.6



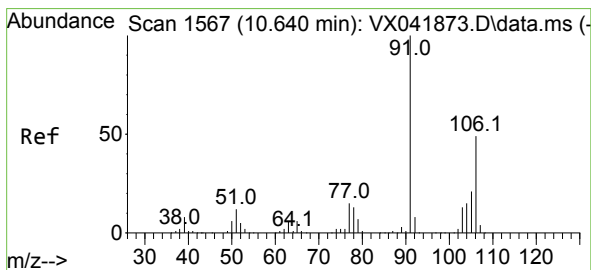
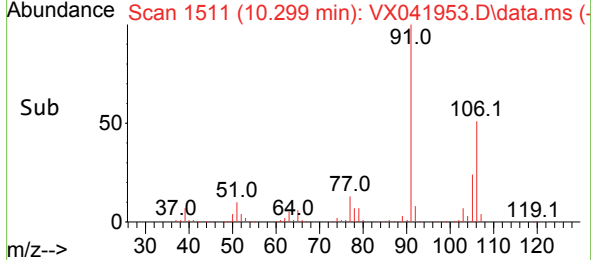
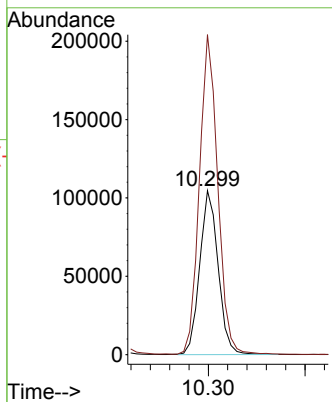


#67
 m/p-Xylenes
 Concen: 38.195 ug/l
 RT: 10.299 min Scan# 1511
 Delta R.T. 0.000 min
 Lab File: VX041953.D
 Acq: 20 Jun 2024 10:03

Instrument :
 MSVOA_X
 ClientSampleId :

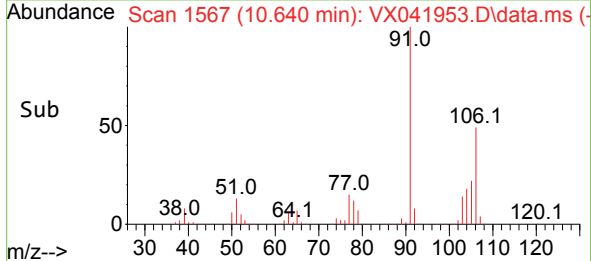
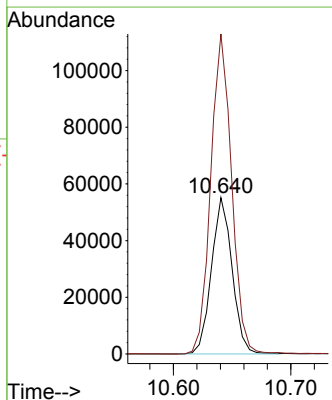
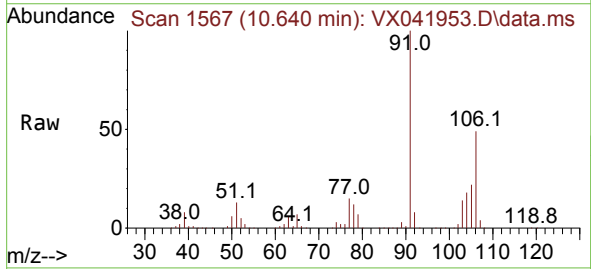


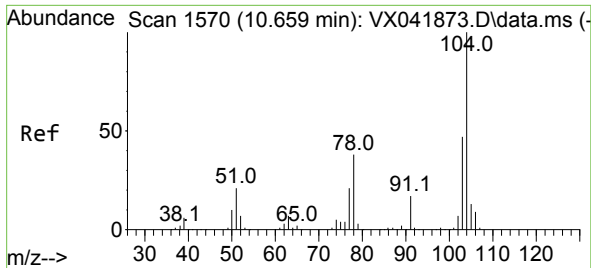
Tgt Ion:106 Resp: 138759
 Ion Ratio Lower Upper
 106 100
 91 194.0 157.0 235.6



#68
 o-Xylene
 Concen: 18.635 ug/l
 RT: 10.640 min Scan# 1567
 Delta R.T. 0.000 min
 Lab File: VX041953.D
 Acq: 20 Jun 2024 10:03

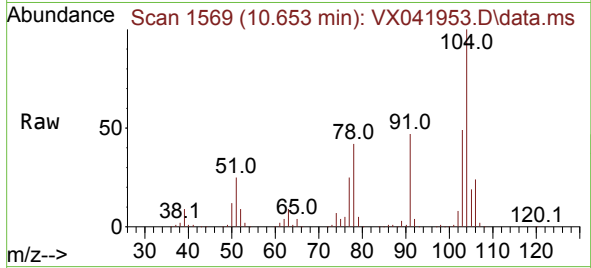
Tgt Ion:106 Resp: 67496
 Ion Ratio Lower Upper
 106 100
 91 206.4 103.2 309.6



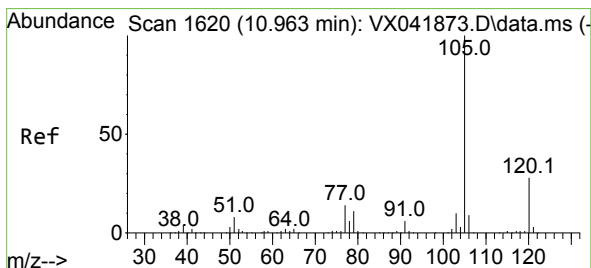
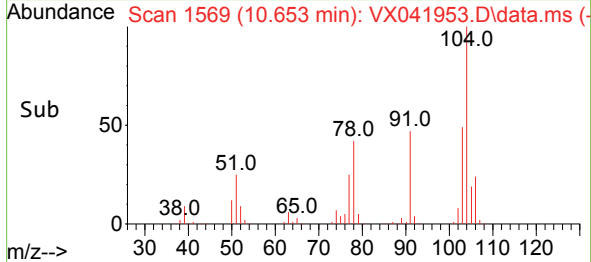
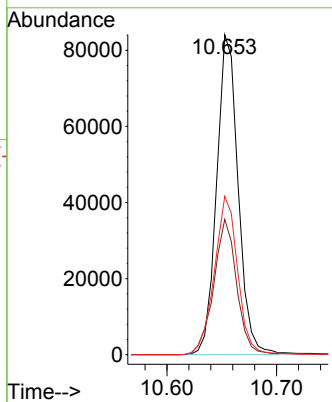


#69
 Styrene
 Concen: 18.969 ug/l
 RT: 10.653 min Scan# 1569
 Delta R.T. -0.006 min
 Lab File: VX041953.D
 Acq: 20 Jun 2024 10:03

Instrument : MSVOA_X
 ClientSampleId :

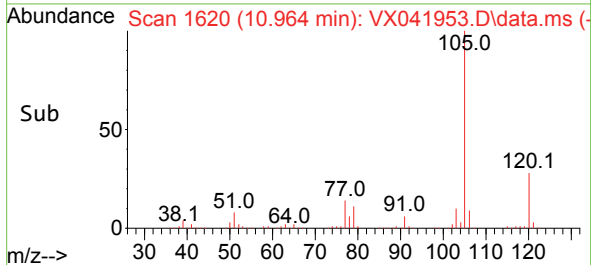
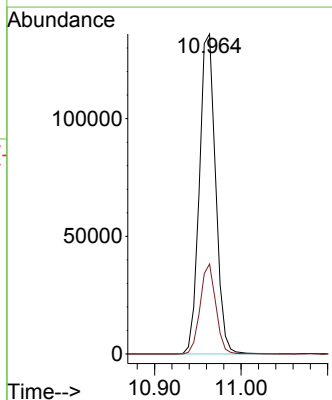
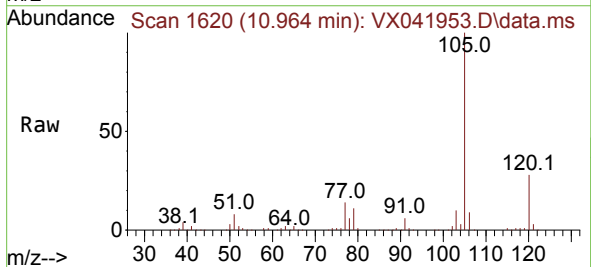


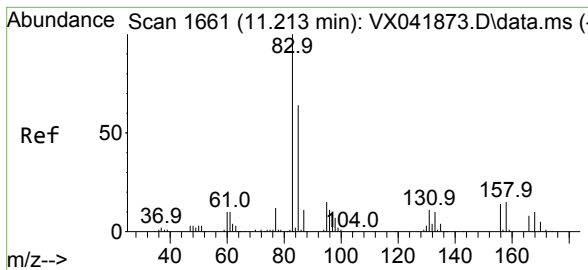
Tgt Ion:104 Resp: 114810
 Ion Ratio Lower Upper
 104 100
 78 45.3 36.5 54.7
 103 53.9 43.4 65.2



#70
 Isopropylbenzene
 Concen: 19.421 ug/l
 RT: 10.964 min Scan# 1620
 Delta R.T. 0.000 min
 Lab File: VX041953.D
 Acq: 20 Jun 2024 10:03

Tgt Ion:105 Resp: 176866
 Ion Ratio Lower Upper
 105 100
 120 27.1 19.2 35.6



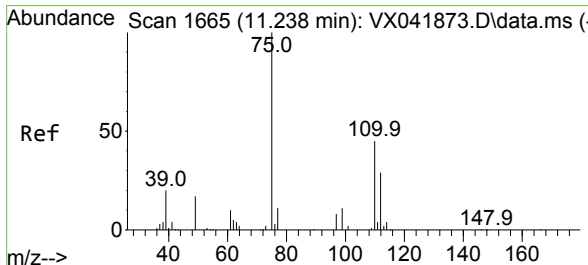
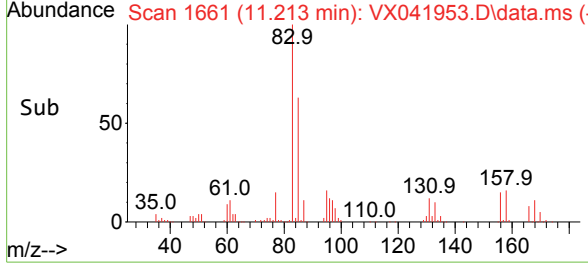
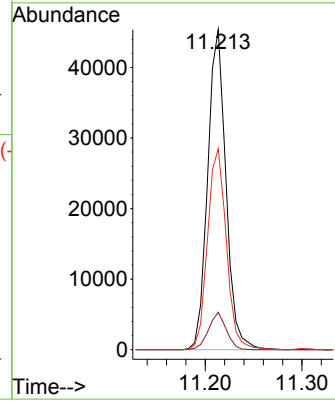
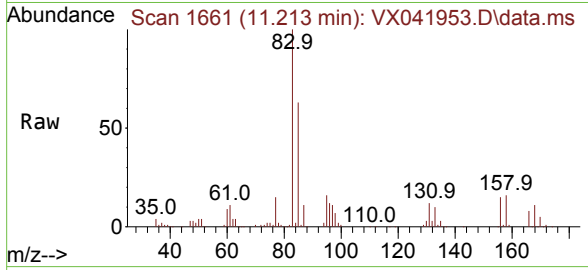


#71
 1,1,2-Tetrachloroethane
 Concen: 18.970 ug/l
 RT: 11.213 min Scan# 1661
 Delta R.T. 0.000 min
 Lab File: VX041953.D
 Acq: 20 Jun 2024 10:03

Instrument : MSVOA_X
 ClientSampleId :

Tgt Ion: 83 Resp: 59789

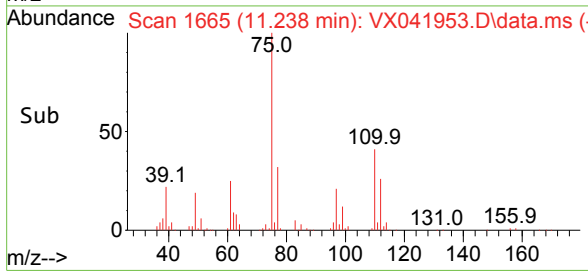
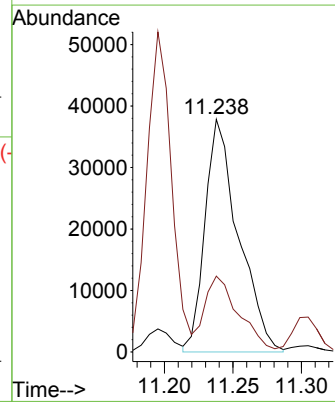
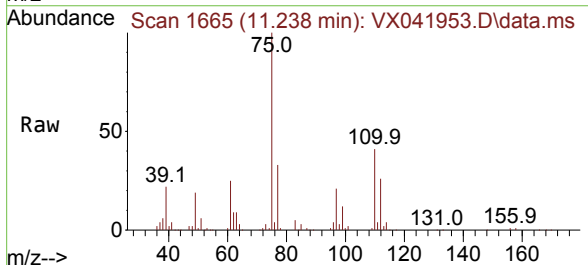
Ion	Ratio	Lower	Upper
83	100		
131	11.3	5.5	16.7
85	64.4	32.6	97.7

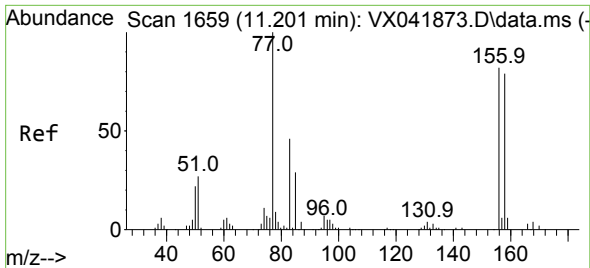


#72
 1,2,3-Trichloropropane
 Concen: 25.236 ug/l
 RT: 11.238 min Scan# 1665
 Delta R.T. 0.000 min
 Lab File: VX041953.D
 Acq: 20 Jun 2024 10:03

Tgt Ion: 75 Resp: 64421

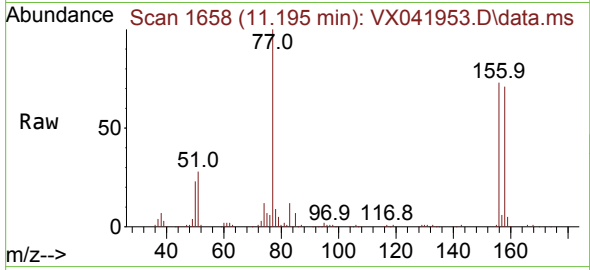
Ion	Ratio	Lower	Upper
75	100		
77	33.3	0.0	79.6



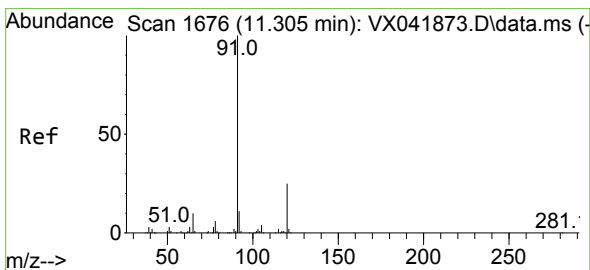
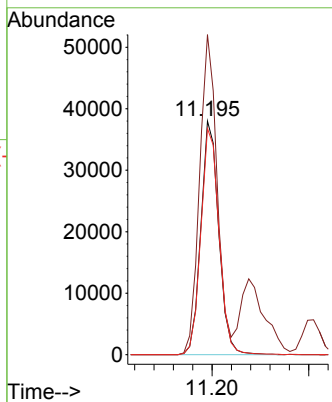
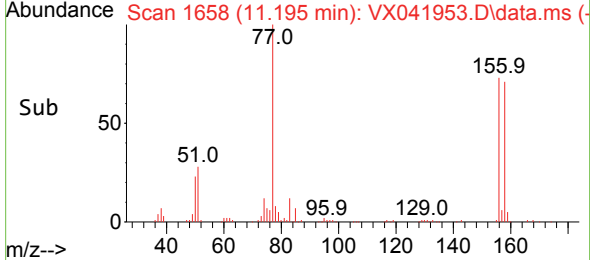


#73
 Bromobenzene
 Concen: 18.395 ug/l
 RT: 11.195 min Scan# 1658
 Delta R.T. -0.006 min
 Lab File: VX041953.D
 Acq: 20 Jun 2024 10:03

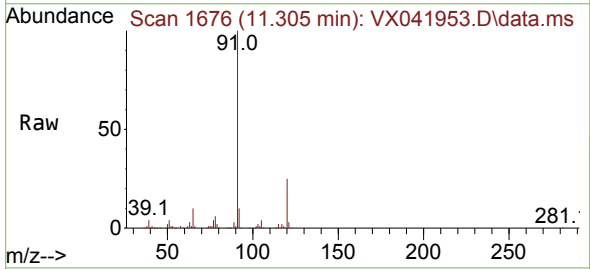
Instrument : MSVOA_X
 ClientSampled :



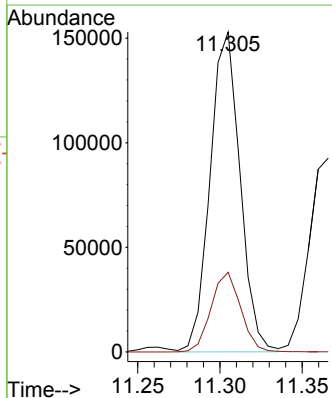
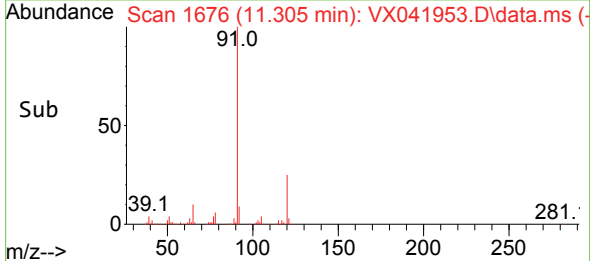
Tgt Ion	Resp	Lower	Upper
156	48863		
156	100		
77	134.4	0.0	266.2
158	98.7	0.0	195.2

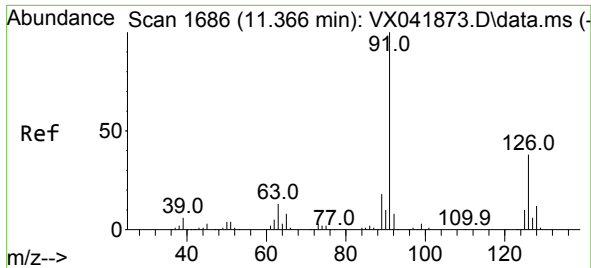


#74
 n-propylbenzene
 Concen: 19.373 ug/l
 RT: 11.305 min Scan# 1676
 Delta R.T. 0.000 min
 Lab File: VX041953.D
 Acq: 20 Jun 2024 10:03



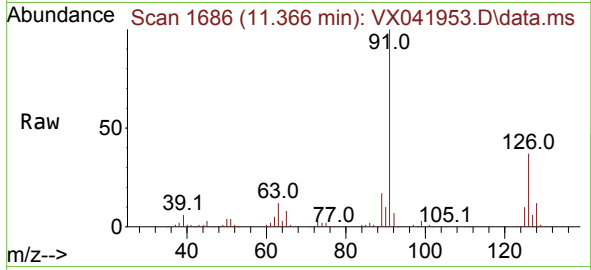
Tgt Ion	Resp	Lower	Upper
91	193806		
91	100		
120	24.6	0.0	49.6



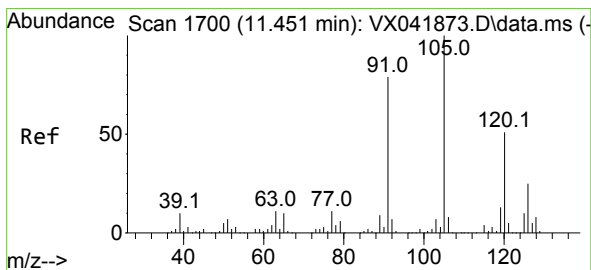
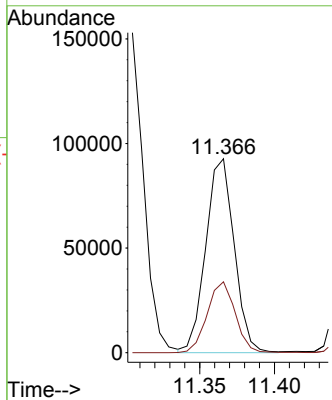
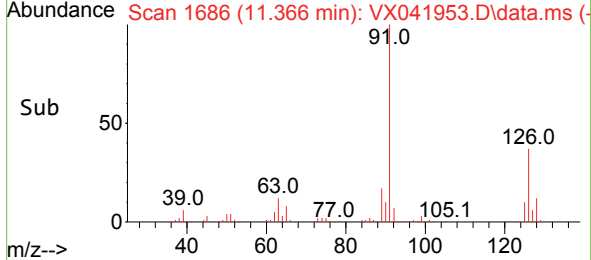


#75
 2-Chlorotoluene
 Concen: 19.339 ug/l
 RT: 11.366 min Scan# 1686
 Delta R.T. 0.000 min
 Lab File: VX041953.D
 Acq: 20 Jun 2024 10:03

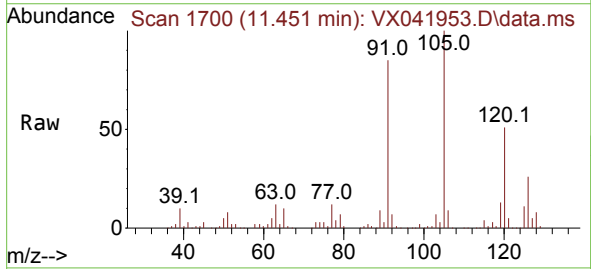
Instrument : MSVOA_X
 ClientSampleId :



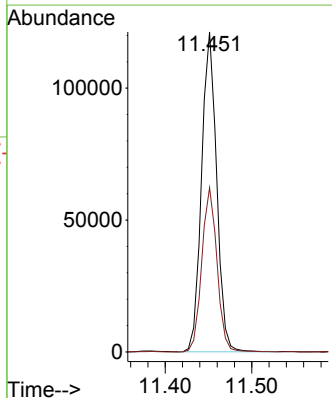
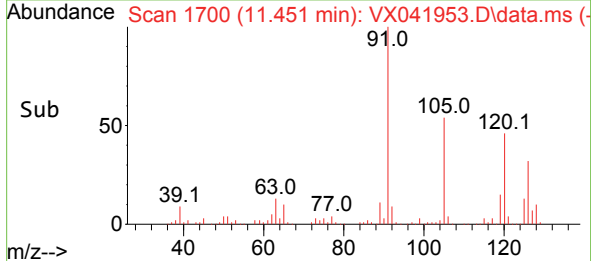
Tgt Ion: 91 Resp: 122853
 Ion Ratio Lower Upper
 91 100
 126 35.8 0.0 72.6

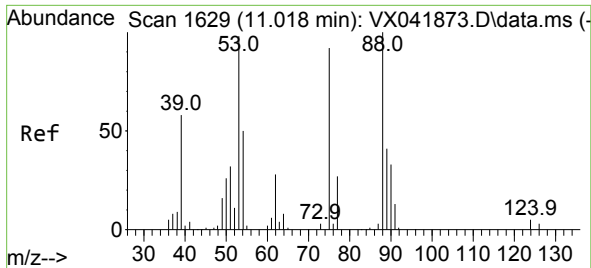


#76
 1,3,5-Trimethylbenzene
 Concen: 19.187 ug/l
 RT: 11.451 min Scan# 1700
 Delta R.T. 0.000 min
 Lab File: VX041953.D
 Acq: 20 Jun 2024 10:03



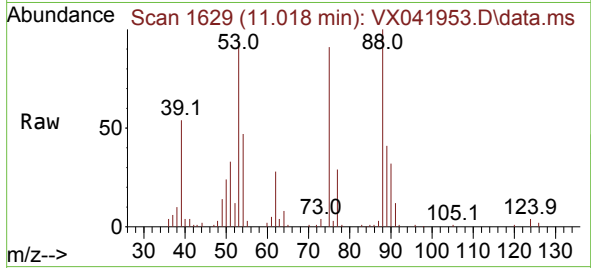
Tgt Ion: 105 Resp: 146384
 Ion Ratio Lower Upper
 105 100
 120 52.0 0.0 103.0



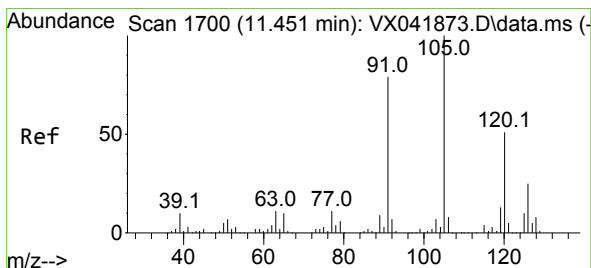
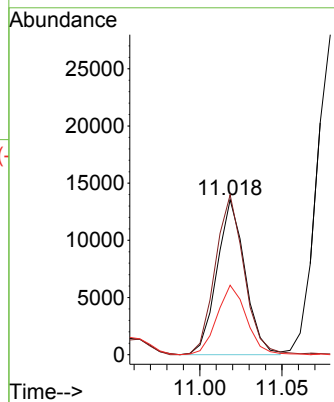
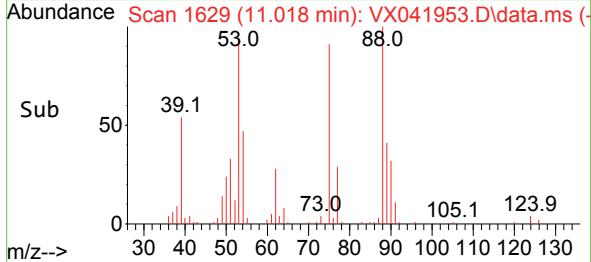


#77
 t-1,4-Dichloro-2-butene
 Concen: 17.076 ug/l
 RT: 11.018 min Scan# 1629
 Delta R.T. 0.000 min
 Lab File: VX041953.D
 Acq: 20 Jun 2024 10:03

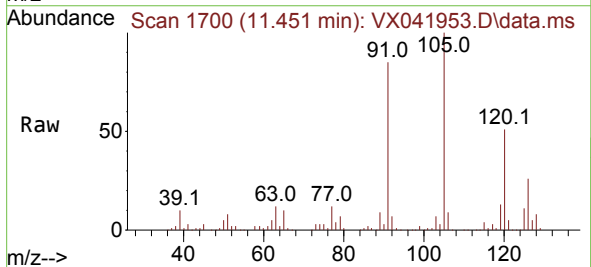
Instrument : MSVOA_X
 ClientSampleId :



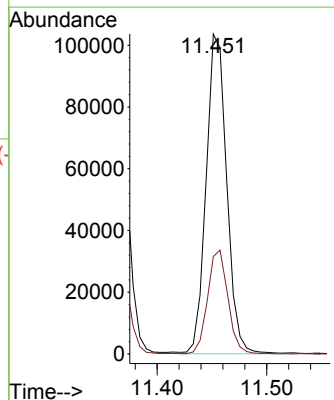
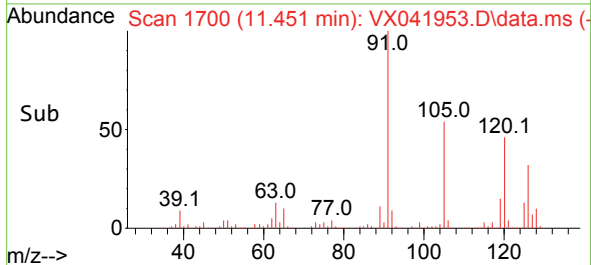
Tgt Ion: 75 Resp: 16126
 Ion Ratio Lower Upper
 75 100
 53 103.1 53.4 160.2
 89 44.8 22.5 67.5

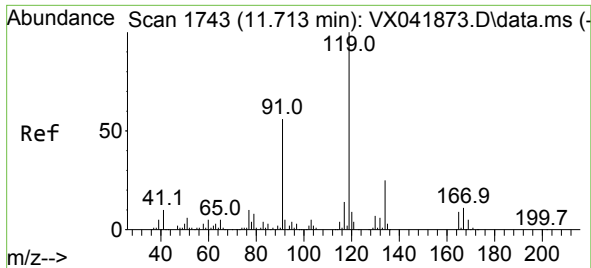


#78
 4-Chlorotoluene
 Concen: 19.157 ug/l
 RT: 11.451 min Scan# 1700
 Delta R.T. 0.000 min
 Lab File: VX041953.D
 Acq: 20 Jun 2024 10:03



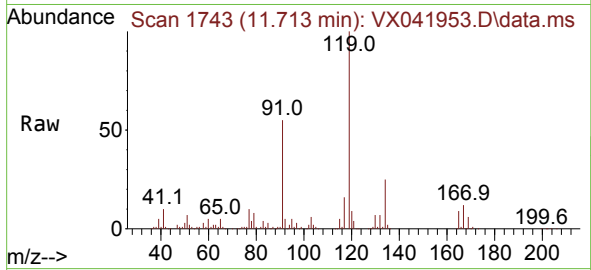
Tgt Ion: 91 Resp: 135188
 Ion Ratio Lower Upper
 91 100
 126 32.1 0.0 64.8



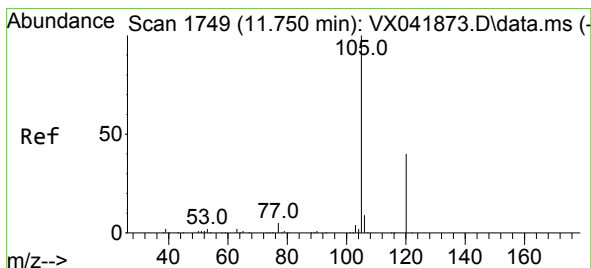
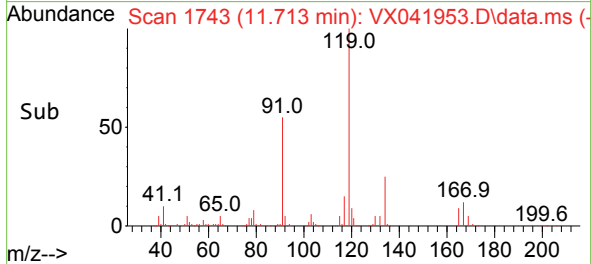
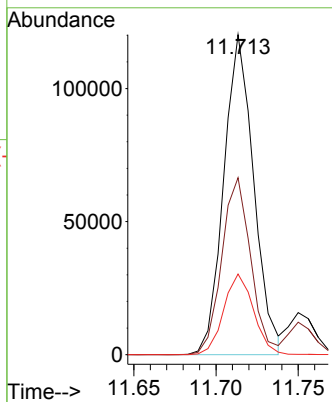


#79
 tert-butylbenzene
 Concen: 18.825 ug/l
 RT: 11.713 min Scan# 1743
 Delta R.T. 0.000 min
 Lab File: VX041953.D
 Acq: 20 Jun 2024 10:03

Instrument : MSVOA_X
 ClientSampleId :

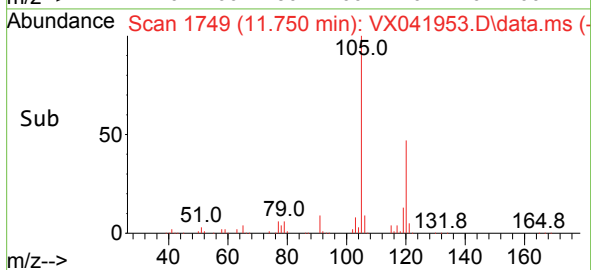
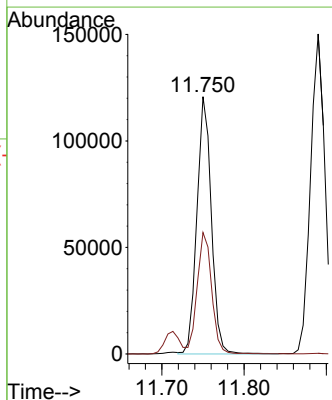
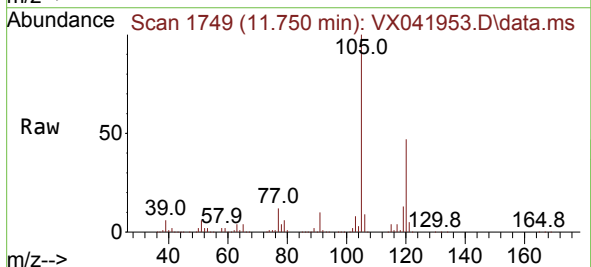


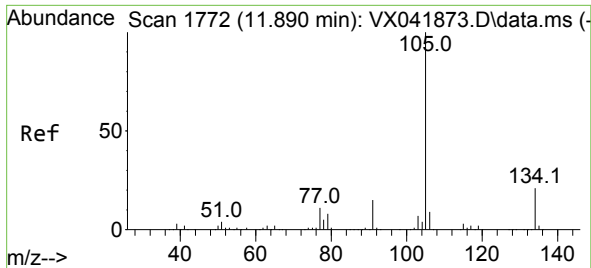
Tgt Ion:119 Resp: 152456
 Ion Ratio Lower Upper
 119 100
 91 53.7 0.0 106.0
 134 25.1 0.0 49.4



#80
 1,2,4-Trimethylbenzene
 Concen: 19.355 ug/l
 RT: 11.750 min Scan# 1749
 Delta R.T. 0.000 min
 Lab File: VX041953.D
 Acq: 20 Jun 2024 10:03

Tgt Ion:105 Resp: 147528
 Ion Ratio Lower Upper
 105 100
 120 46.3 0.0 96.2

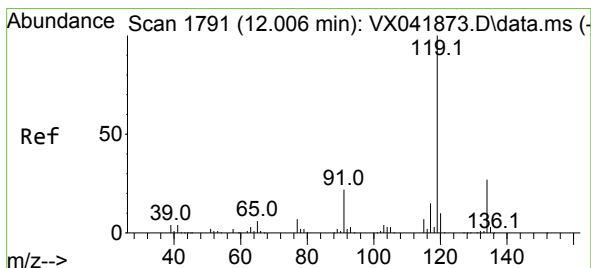
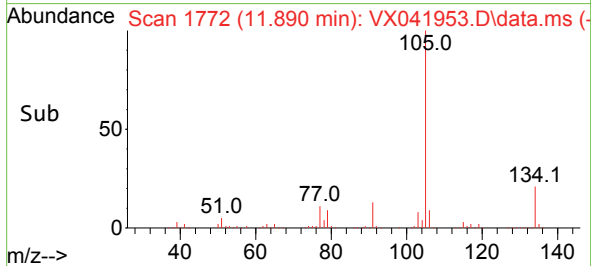
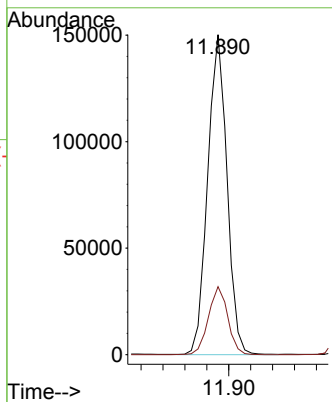
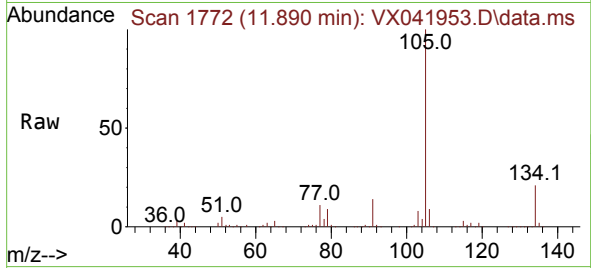




#81
 sec-Butylbenzene
 Concen: 19.465 ug/l
 RT: 11.890 min Scan# 1772
 Delta R.T. 0.000 min
 Lab File: VX041953.D
 Acq: 20 Jun 2024 10:03

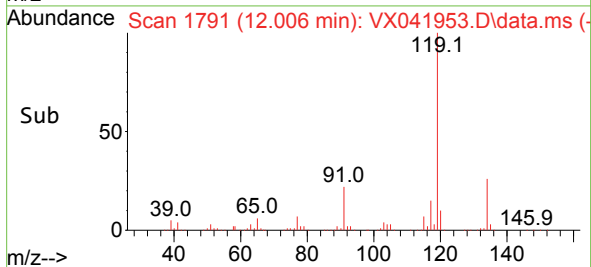
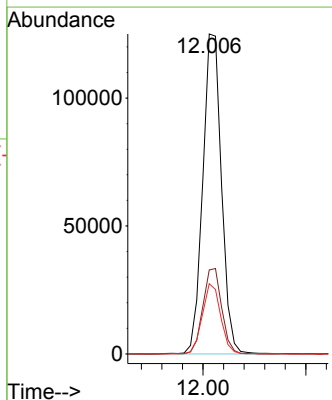
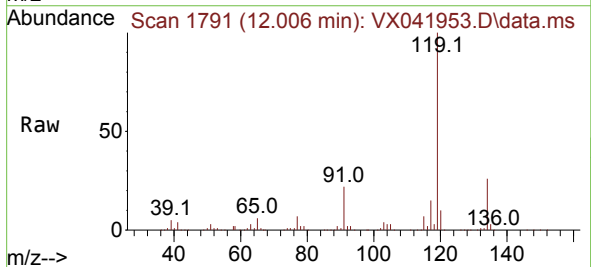
Instrument : MSVOA_X
 ClientSampleId :

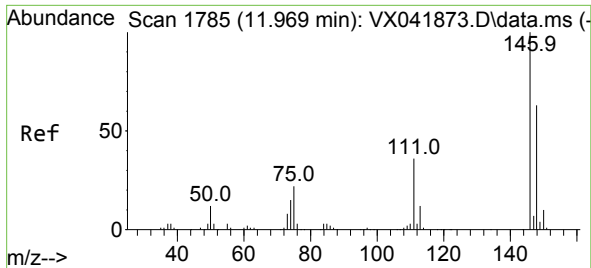
Tgt Ion:105 Resp: 183858
 Ion Ratio Lower Upper
 105 100
 134 21.3 0.0 43.2



#82
 p-Isopropyltoluene
 Concen: 19.187 ug/l
 RT: 12.006 min Scan# 1791
 Delta R.T. 0.000 min
 Lab File: VX041953.D
 Acq: 20 Jun 2024 10:03

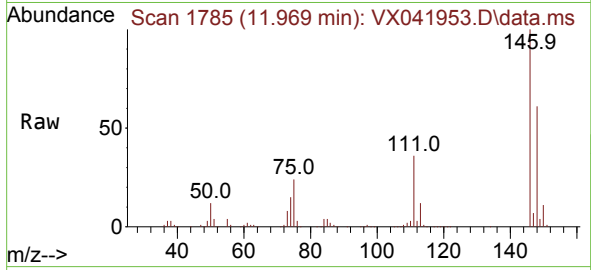
Tgt Ion:119 Resp: 158822
 Ion Ratio Lower Upper
 119 100
 134 26.7 0.0 54.0
 91 21.5 0.0 42.2



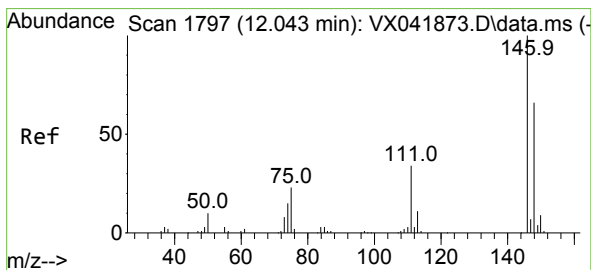
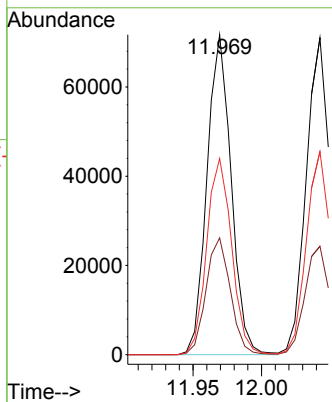
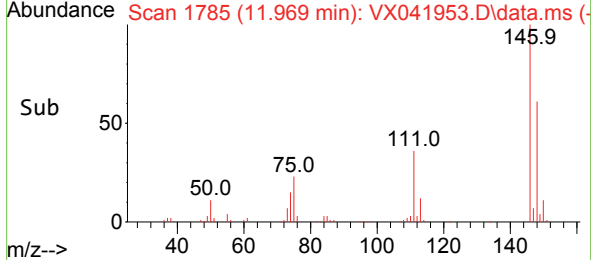


#83
 1,3-Dichlorobenzene
 Concen: 18.610 ug/l
 RT: 11.969 min Scan# 1785
 Delta R.T. 0.000 min
 Lab File: VX041953.D
 Acq: 20 Jun 2024 10:03

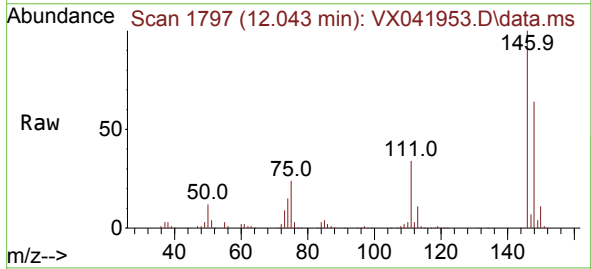
Instrument : MSVOA_X
 ClientSampleId :



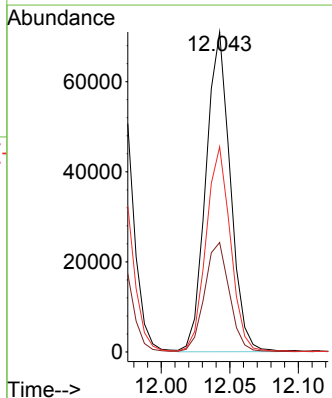
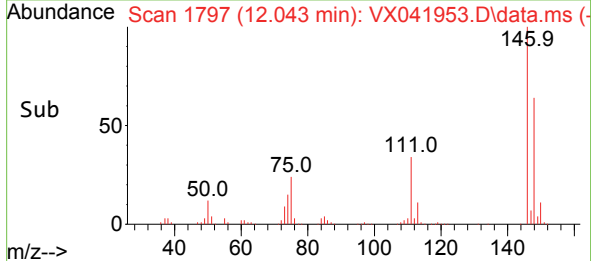
Tgt Ion:146 Resp: 88144
 Ion Ratio Lower Upper
 146 100
 111 36.8 18.0 54.0
 148 63.2 31.9 95.7

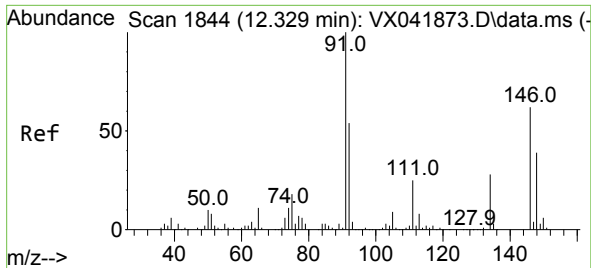


#84
 1,4-Dichlorobenzene
 Concen: 18.654 ug/l
 RT: 12.043 min Scan# 1797
 Delta R.T. 0.000 min
 Lab File: VX041953.D
 Acq: 20 Jun 2024 10:03



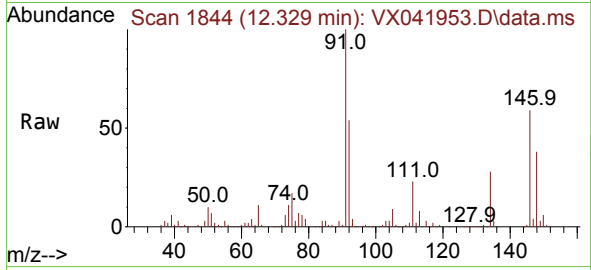
Tgt Ion:146 Resp: 87947
 Ion Ratio Lower Upper
 146 100
 111 35.3 17.4 52.3
 148 63.5 32.3 96.9



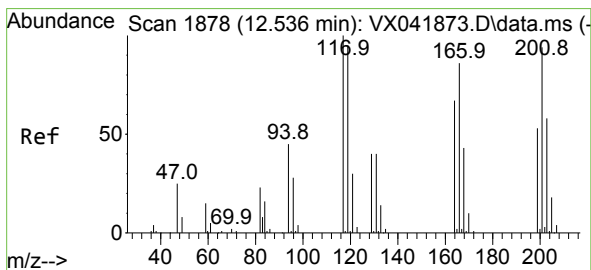
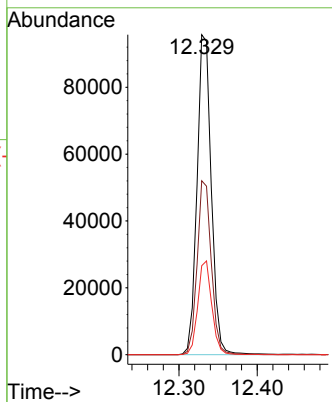
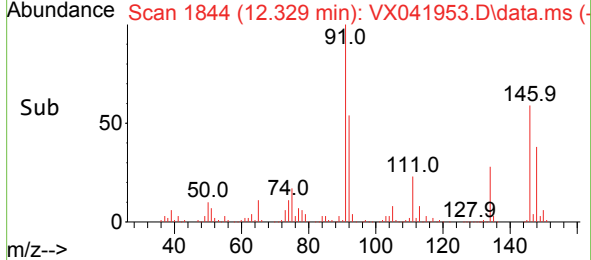


#85
 n-Butylbenzene
 Concen: 18.965 ug/l
 RT: 12.329 min Scan# 1844
 Delta R.T. 0.000 min
 Lab File: VX041953.D
 Acq: 20 Jun 2024 10:03

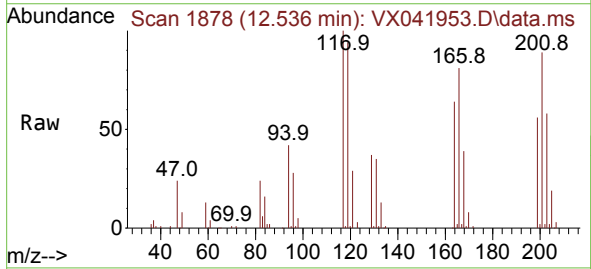
Instrument : MSVOA_X
 ClientSampleId :



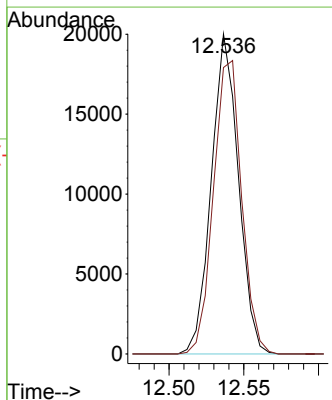
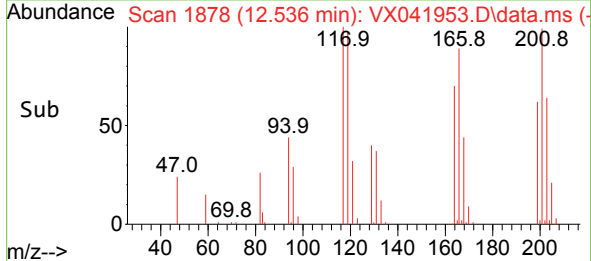
Tgt Ion: 91 Resp: 121394
 Ion Ratio Lower Upper
 91 100
 92 53.8 0.0 109.8
 134 28.6 0.0 58.4

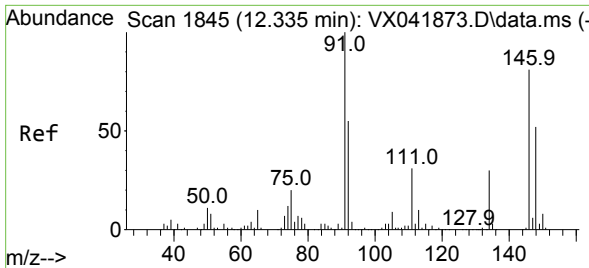


#86
 Hexachloroethane
 Concen: 18.654 ug/l
 RT: 12.536 min Scan# 1878
 Delta R.T. 0.000 min
 Lab File: VX041953.D
 Acq: 20 Jun 2024 10:03



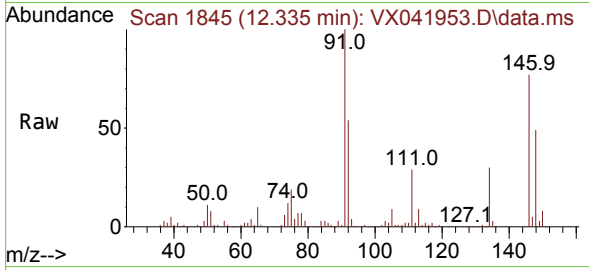
Tgt Ion: 117 Resp: 25216
 Ion Ratio Lower Upper
 117 100
 201 95.6 48.9 146.8



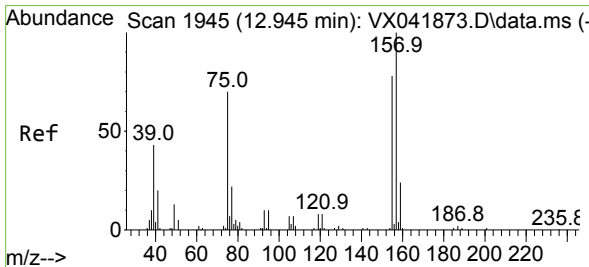
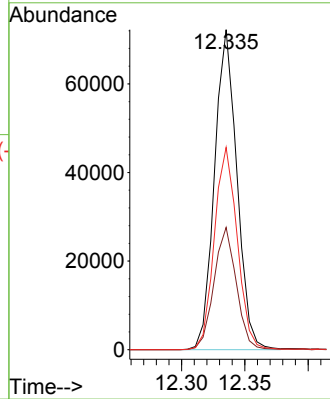
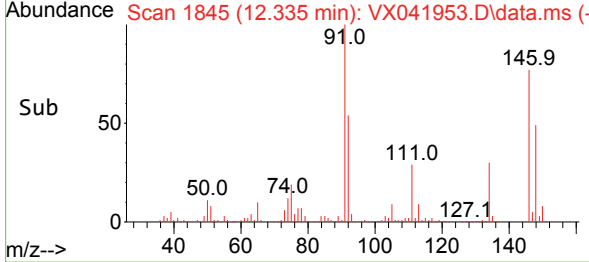


#87
 1,2-Dichlorobenzene
 Concen: 18.582 ug/l
 RT: 12.335 min Scan# 1845
 Delta R.T. 0.000 min
 Lab File: VX041953.D
 Acq: 20 Jun 2024 10:03

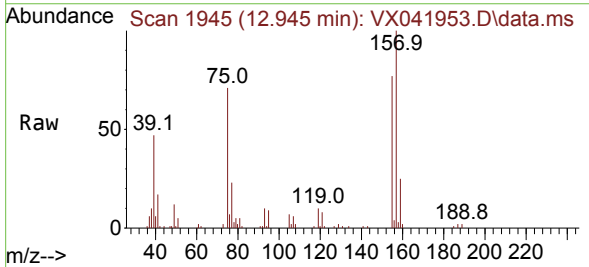
Instrument : MSVOA_X
 ClientSampled :



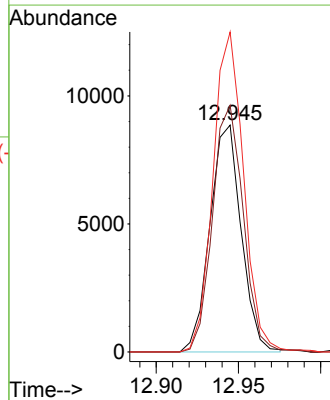
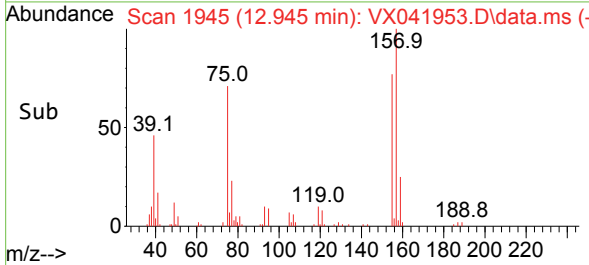
Tgt Ion:146 Resp: 89009
 Ion Ratio Lower Upper
 146 100
 111 38.2 19.1 57.3
 148 64.4 32.4 97.0

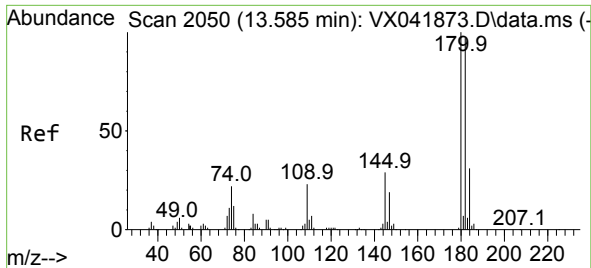


#88
 1,2-Dibromo-3-Chloropropane
 Concen: 17.975 ug/l
 RT: 12.945 min Scan# 1945
 Delta R.T. 0.000 min
 Lab File: VX041953.D
 Acq: 20 Jun 2024 10:03



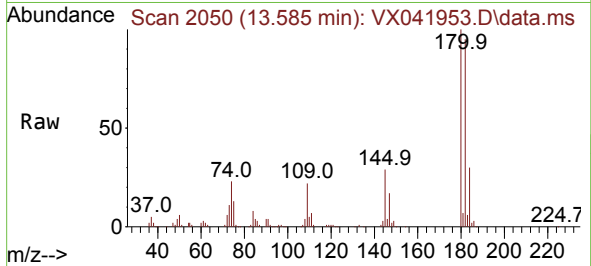
Tgt Ion: 75 Resp: 11718
 Ion Ratio Lower Upper
 75 100
 155 106.6 88.6 133.0
 157 137.4 112.8 169.2



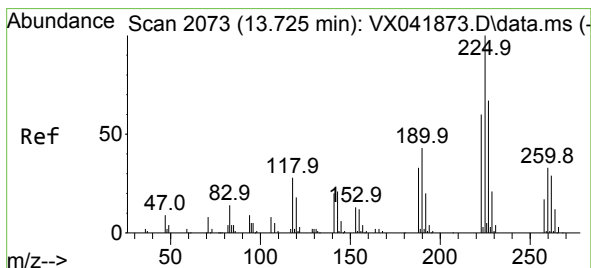
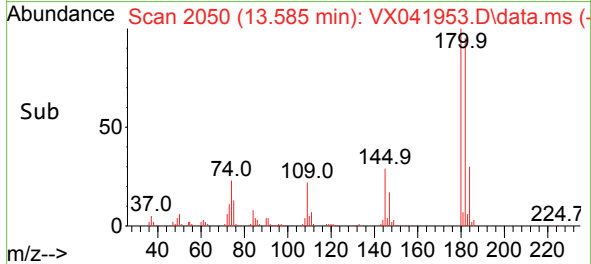
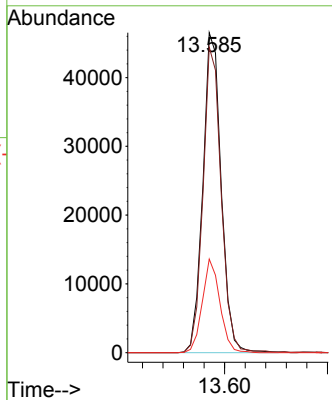


#89
 1,2,4-Trichlorobenzene
 Concen: 17.829 ug/l
 RT: 13.585 min Scan# 2050
 Delta R.T. 0.000 min
 Lab File: VX041953.D
 Acq: 20 Jun 2024 10:03

Instrument :
 MSVOA_X
 ClientSampleId :

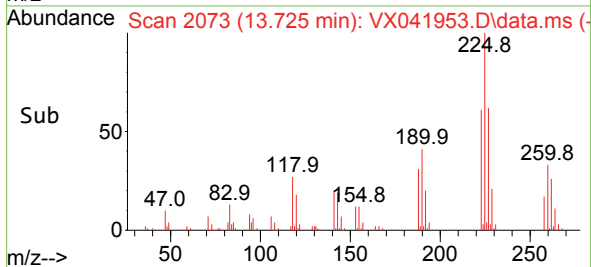
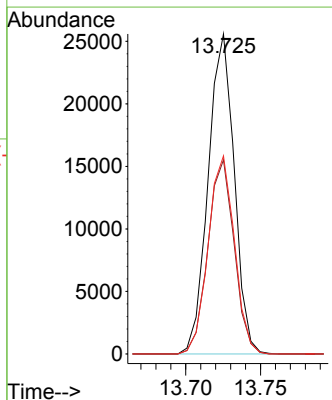
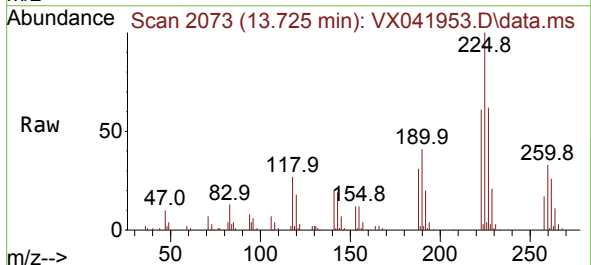


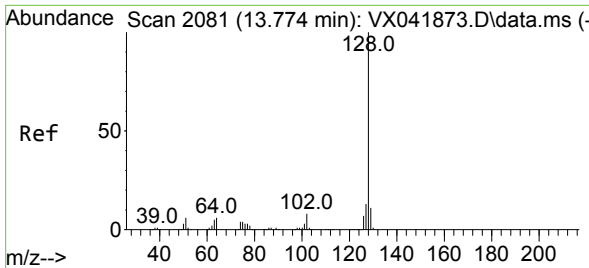
Tgt Ion:180 Resp: 57810
 Ion Ratio Lower Upper
 180 100
 182 94.2 76.9 115.3
 145 28.2 22.8 34.2



#90
 Hexachlorobutadiene
 Concen: 19.404 ug/l
 RT: 13.725 min Scan# 2073
 Delta R.T. 0.000 min
 Lab File: VX041953.D
 Acq: 20 Jun 2024 10:03

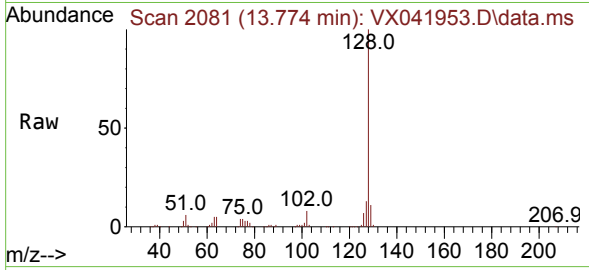
Tgt Ion:225 Resp: 31003
 Ion Ratio Lower Upper
 225 100
 223 61.1 0.0 120.8
 227 62.4 0.0 126.6





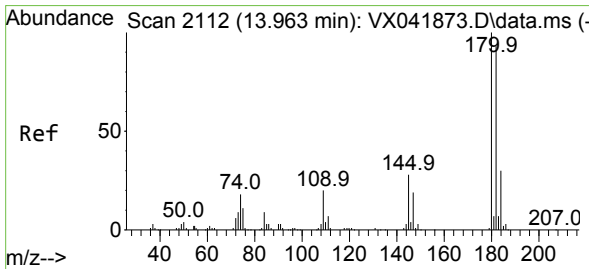
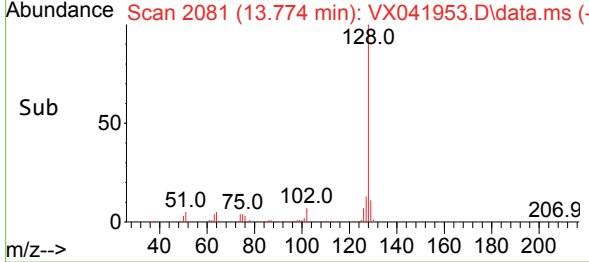
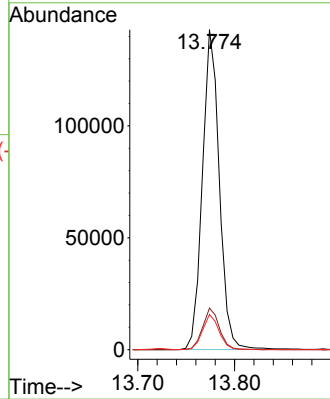
#91
 Naphthalene
 Concen: 17.756 ug/l
 RT: 13.774 min Scan# 2081
 Delta R.T. 0.000 min
 Lab File: VX041953.D
 Acq: 20 Jun 2024 10:03

Instrument : MSVOA_X
 ClientSampleId :



Tgt Ion:128 Resp: 173962

Ion	Ratio	Lower	Upper
128	100		
127	12.9	10.4	15.6
129	10.8	8.7	13.1



#92
 1,2,3-Trichlorobenzene
 Concen: 18.226 ug/l
 RT: 13.963 min Scan# 2112
 Delta R.T. 0.000 min
 Lab File: VX041953.D
 Acq: 20 Jun 2024 10:03

Tgt Ion:180 Resp: 61203

Ion	Ratio	Lower	Upper
180	100		
182	95.7	0.0	187.8
145	29.2	0.0	58.4

